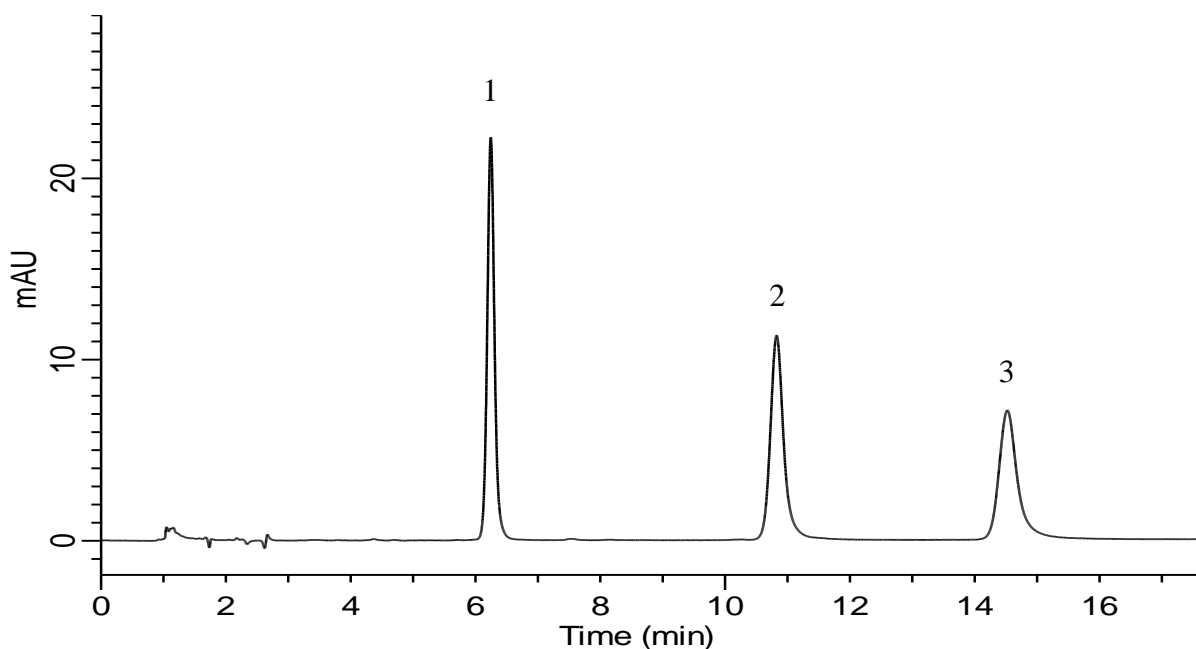


# InertSearch for LC

Inertsil Applications

## Analysis of GTP and its related compounds

Data No. LB651-0806



### Conditions

**Column** : InertSustain Amide  
(1.9  $\mu$  m, 150 x 2.1 mm I.D., Metal-free hardware)  
**Column Cat. No.** : 5020-  
**Eluent** : A) CH<sub>3</sub>CN  
B) H<sub>2</sub>O  
C) HCOOH  
D) Diethylenetriamine  
A/B/C/D = 70/30/0.2/0.2, v/v/v/v

**Flow rate** : 0.3 mL/min

**Col. Temp.** : 40 °C

**Detection** : UV 254 nm

**Injection Vol.** : 0.5  $\mu$  L

**Sample** : Standard

### Analyte:

1. Guanosine monophosphate (GMP) 100 mg/L  
2. Guanosine diphosphate (GDP) 100 mg/L  
3. Guanosine triphosphate (GTP) 100 mg/L