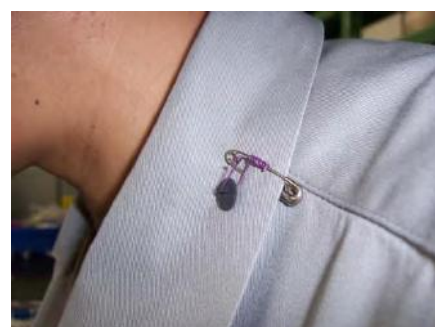
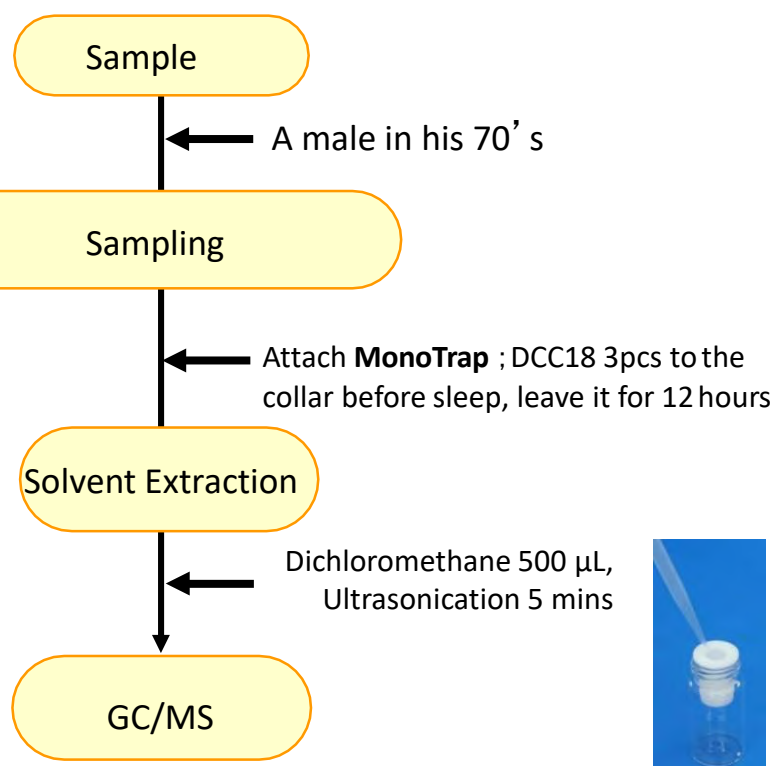


MonoTrap is a hybrid novel adsorbent that combines a large surface area and the properties of silica gel, activated carbon, and ODS. Due to the large surface area of porous silica and the adsorption effect caused by the inclusion of activated carbon, a high collection efficiency is obtained. Therefore, high-sensitivity analysis can be performed in a short time. In this study, we used MonoTrap DCC18 (with activated carbon) to perform simple enrichment analyses of aging odors in men in their 70s. At bedtime, enrichment analysis can be easily performed by simply attaching it to the collar. We were able to identify trans-2-Nonenal, an odorous ingredient of aging. We were also able to confirm that the ingredients of the paint applied by the subjects at bedtime were also collected. Due to the large surface area of MonoTrap, a large amount of information was obtained with high sensitivity, even in solvent-extraction, where sample loading is large and dilutions are of concern. The highly inert WAX-column InertCap Pure-WAX is the optimal column for fragrance components analyses. It is recommended to use this medicine in conjunction with MonoTrap.

Protocol



Ref) How to attach MonoTrap



Ultra inert WAX column **InertCap Pure-WAX** is highly recommended to analyze aromatic compounds together with **MonoTrap**

MonoTrap Series

Cat.No	Description	Shape	Size	Active Carbon	Functional Group
1050-72101	MonoTrap DCC18	Disk	O.D.10mmx thick 1mm	Yes	C18
1050-72201	MonoTrap RCC18	Rod	5mm	Yes	C18
1050-71101	MonoTrap DSC18	Disk	O.D.10mmx thick 1mm	No	C18
1050-71201	MonoTrap RSC18	Rod	5mm	No	C18



DCC18



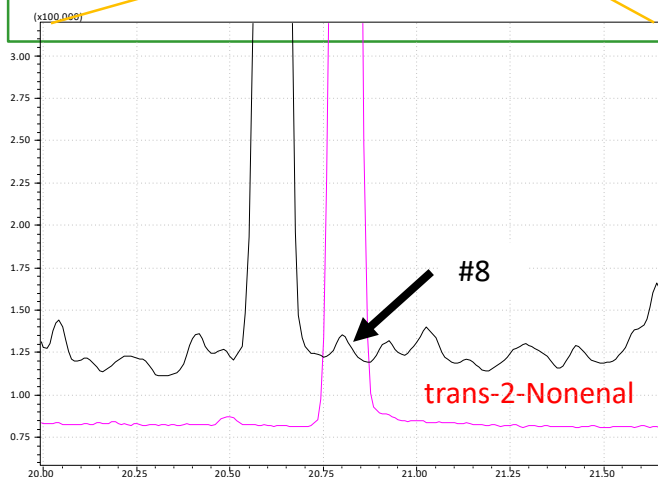
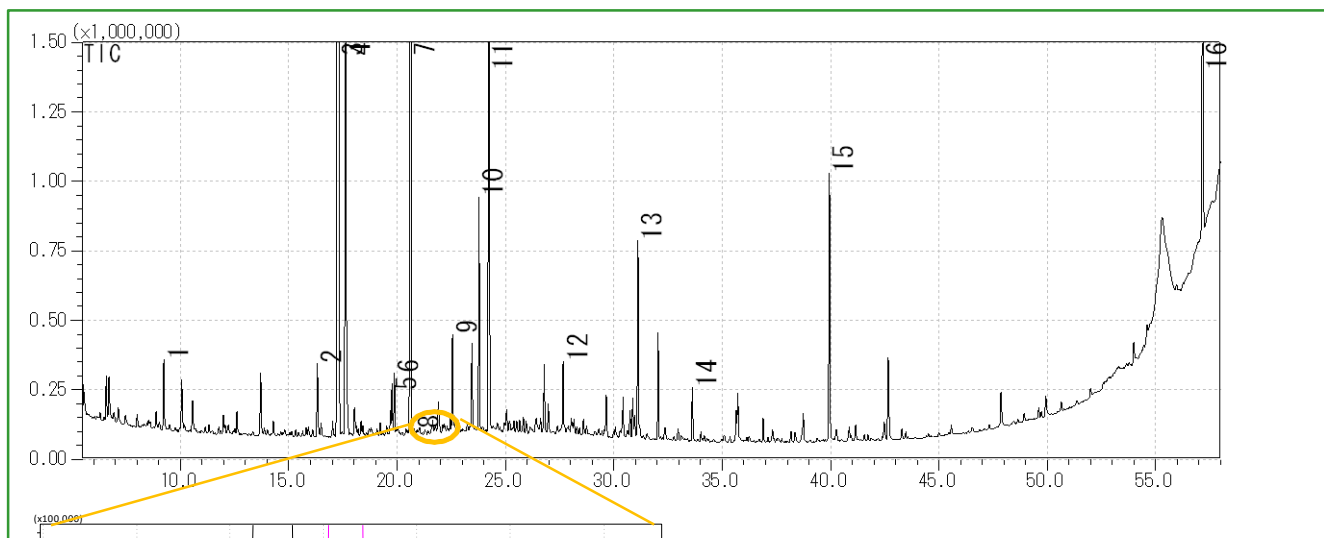
RCC18



DSC18



RSC18



GC Condition

System : SHIMADZU GC-2010, GCMS-QP2010Plus
Column : InertCap Pure-WAX (Cat.No. 1010-68142)
 0.25 mm I.D. × 30 m df=0.25 μm
Column Temp : 40 °C (5 min)→4 °C/min→250 °C (5 min)
Carrier Gas : He 120 kPa
Injection : Splitless, 1 μL
Detection : MS Scan (m/z;20-350)

- | | |
|---------------------|--|
| 1 D-Limonene | 9 Propylene Glycol |
| 2 Nonanal | 10 Heptadecane |
| 3 Tetradecane | 11 Menthol |
| 4 m-Dichlorobenzene | 12 Salicylic acid, methyl ester |
| 5 2-Ethyl-1-hexanol | 13 Ceraphyl 230 ← Emollient Agent |
| 6 Decanal | 14 1-Dodecanol |
| 7 Pentadecane | 15 Crotamiton ← Cream that the sample put on his body before sleep |
| 8 trans-2-Nonenal | 16 trans-Squalene |

GL Sciences disclaims any and all responsibility for any injury or damage which may be caused by this data directly or indirectly. We reserve the right to amend this information or data at any time and without any prior announcement.

GL Sciences, Inc. Japan

22-1 Nishishinjuku 6-Chome
 Shinjuku-ku, Tokyo,
 163-1130, Japan
 Phone: +81-3-5323-6620
 Fax: +81-3-5323-6621
 Email: world@gls.co.jp
 Web: www.glsciences.com

GL Sciences B.V.

De Sleutel 9
 5652 AS Eindhoven
 The Netherlands
 Phone: +31 (0)40 254 95 31
 Email: info@glscienc.es
 Web: www.glsciences.eu

GL Sciences (ShangHai) Ltd.

Tower B, Room 2003,
 Far East International Plaza,
 NO,317 Xianxia Road,
 Changning District.
 Shanghai, China P.C. 200051
 Phone: +86 (0)21-6278-2272
 Email: contact@glscienc.es.com.cn
 Web: www.glsciences.com.cn

GL Sciences, Inc. USA

4733 Torrance Blvd. Suite 255
 Torrance, CA 90503
 Phone: 310-265-4424
 Fax: 310-265-4425
 Email: info@glscienc.esinc.com
 Web: www.glsciencesinc.com

International Distributors

Visit our Website at:
<https://www.glsciences.com/company/distributor.html>

