

GET SMART

# THE CONNECTED SHOP



**SMART CHAIN LOCK**  
**USER MANUAL**

Welcome to the Smart Chain Lock User Manual. Your easy, step-by-step guide to set up and connect your Smart Chain Lock. The device is designed to be easy-to-use and to replace all average locks with this modern chain lock.



# SUMMARY

---

## I. Device Set Up



1. Set-up Guide
  - a) Set-up Video

## II. Initialization



2. Initial State of your Smart Chain Lock
  - a) Manage Device

## III. Mobile App Connection



3. Registering on the Mobile App
  - a) Downloading the Mobile App
  - b) Adding Devices

## PACKAGING DETAILS

---



1 Smart Chain Lock

## STEP-BY-STEP SET-UP GUIDE

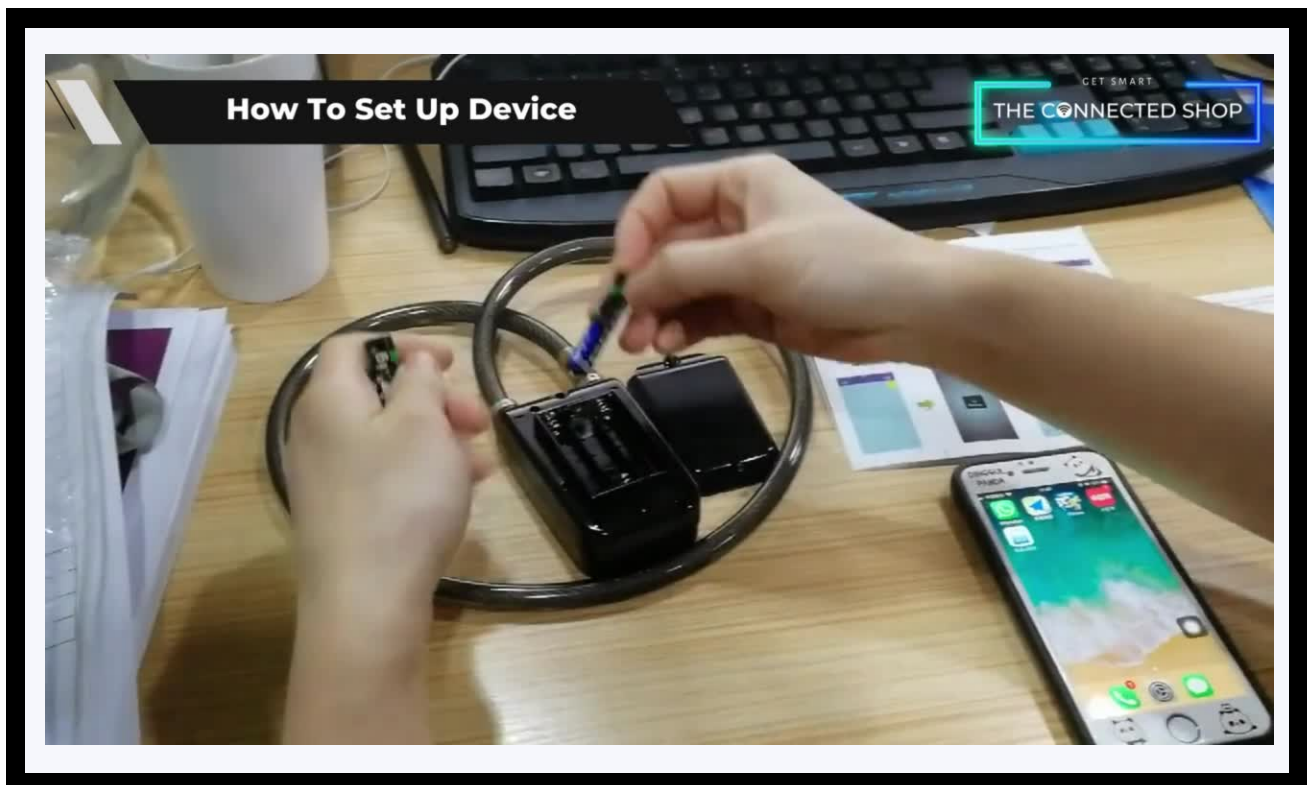
---



## 1. SET UP



- a. Remove all items from its original box and insert new three (3) AAA batteries
- b. Close the battery cover by tightening the screws
- c. Plug in or insert the lock into the body and press the 'lock' button
- d. Wait for the beeping sound indicating that the device has been locked
- e. Proceed to the following steps on how to pair the device with the mobile app to remotely manage it

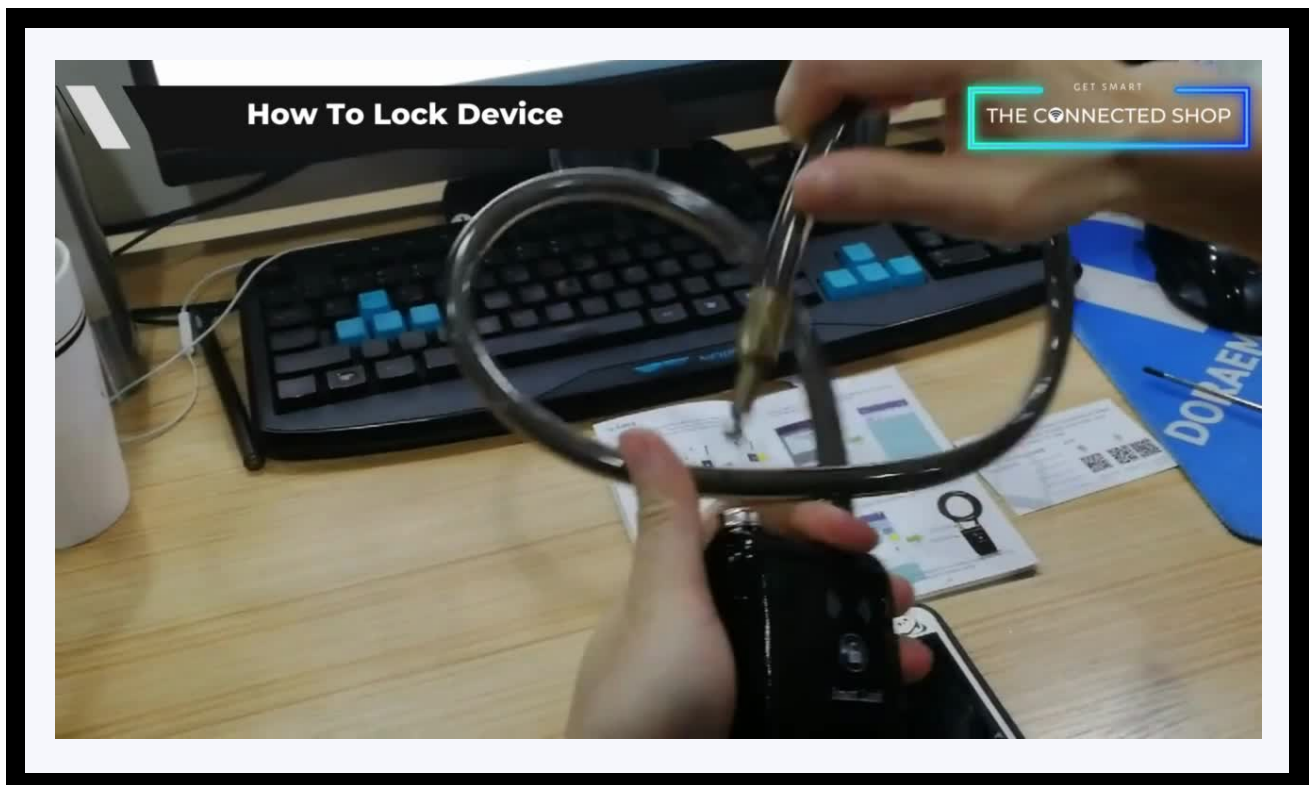


## 2. INITIAL STATE OF YOUR DEVICE



### a) Manage Device

- To lock the device, make sure to tightly insert the lock cylinder into the body and press the 'lock' button until a beeping sound goes off. This will indicate that the device has been locked
- To unlock it using the mobile app, press the 'Unlock' option on the app. To release the lock cylinder from the body, press the unlock button on the side and pull out the cable.



### 3. MOBILE APP CONNECTION



#### a) Downloading the App

Download the application on the Google Play Store or Apple AppStore by searching "Solebe" or by scanning the QR code below:



#### After downloading the app

- Register or log in to an account
- Enable your Bluetooth and phone location
- Activate the device
- Keep your device near your phone

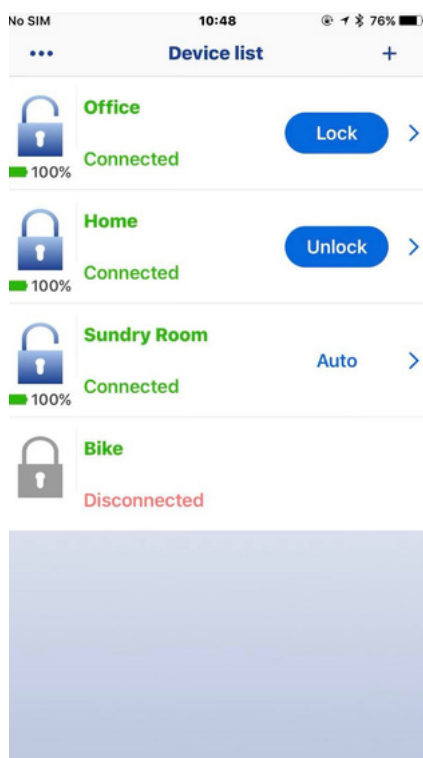


### 3. MOBILE APP CONNECTION



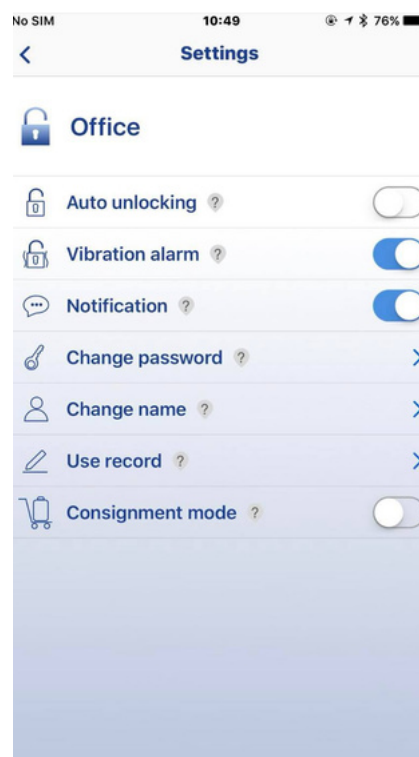
#### b) Adding Devices

To add devices on the app, please follow the instructions below. Your devices and phone must be connected to the same Wi-Fi network in order for this to work.



- To add a device on the mobile app, click the '+' icon on the top-right corner
- It will begin searching for nearby devices

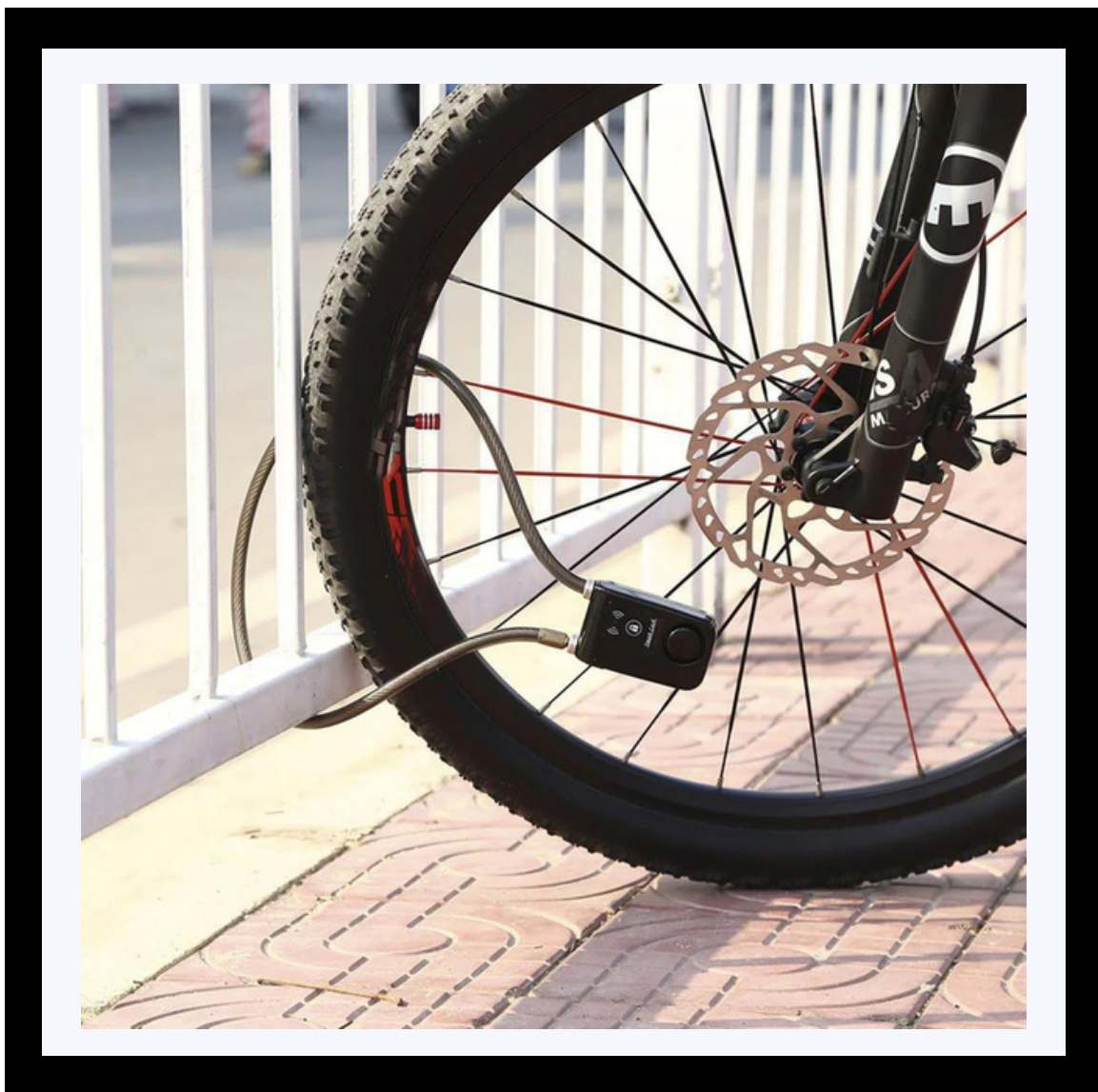
- Wait for the app to finish searching
- Select the device that will appear on the screen
- Enter the original password '123456' to finish pairing on the app
- The lock status will show on the app—whether it's locked or unlocked
- You may rename the lock and change the password afterwards



## Congratulations!

You have successfully set up your very own Smart Chain Lock. Thank you for being a valued customer of The Connected Shop.

[www.theconnectedshop.com](http://www.theconnectedshop.com)





# THE CONNECTED SHOP