

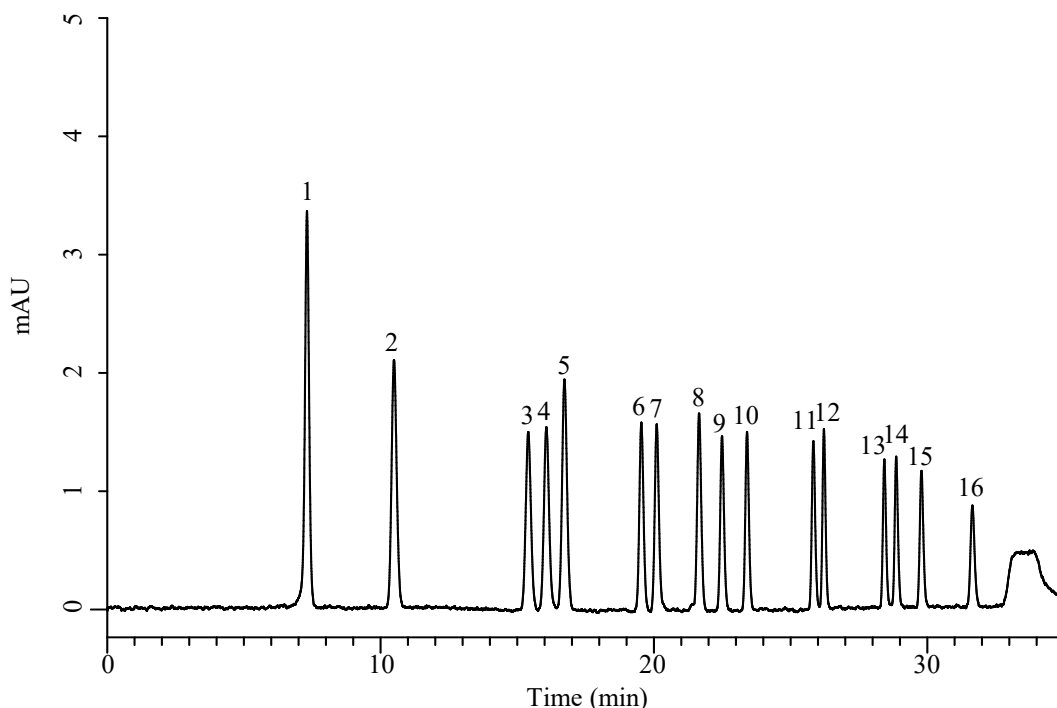
# InertSearch for LC

Inertsil Applications

## Analysis of 16 kinds of Aldehydes

(Detected by Pre-Column Method with DNPH)

Data No. LB741-1087



### Conditions

**System** : Primaide HPLC system (HITACHI)  
**Column** : InertSustain C30 (GL Sciences Inc.)  
(HP 3  $\mu$  m, 150 x 4.6 mm I.D.)  
**Column Cat. No.** : 5020-17184  
**Eluent** : A) CH<sub>3</sub>CN  
B) H<sub>2</sub>O

Time (min)	A (vol%)	B (vol%)
0.0	50	50
10.0	50	50
20.0	70	30
25.0	85	15
35.0	85	15

**Flow Rate** : 1.0 mL/min  
**Col. Temp.** : 20 °C  
**Detection** : UV 360 nm  
**Injection Vol.** : 10  $\mu$  L  
**Sample** : Standard

### Analyte:

1. DNPH-Formaldehyde
2. DNPH-Acetaldehyde
3. DNPH-Acetone
4. DNPH-Propionaldehyde
5. DNPH-Acrolein
6. DNPH-Isobutyraldehyde
7. DNPH-*n*-Butyraldehyde
8. DNPH-Crotonaldehyde
9. DNPH-Isovaleraldehyde
10. DNPH-*n*-Valeraldehyde
11. DNPH-Benzaldehyde
12. DNPH-*n*-Hexanal
13. DNPH-*o*-Tolualdehyde
14. DNPH-*m*-Tolualdehyde
15. DNPH-*p*-Tolualdehyde
16. DNPH-2,5-Dimethylbenzaldehyde  
(100  $\mu$  g/L each)