

FEB. 24 - MAR. 7, 2026

with optional
Rwanda pre-tour
and Zanzibar post-tour

TANZANIA WILDLIFE SAFARI

Orbridge

Ngorongoro Crater, the Serengeti
and the Great Migration

Cornell University

Dear Alumni, Families, and Friends,

Join us on a transformative wildlife safari through the heart of East Africa, the backdrop to the year-round migration of grazing herbivores that traverse the Serengeti Plains. Exploration is rewarded with insight, and every experience provides memories that resonate over a lifetime.

With exceptional access to Tanzania's game parks during this epic 12-day journey, you'll witness spectacular wildlife, colorful local traditions and the endless sun-drenched savannas of Tanzania. Along the way, marvel at three of the Seven Natural Wonders of Africa: the iconic silhouette of Mt. Kilimanjaro, its snow-capped peak standing majestically above the African landscape; the extraordinary Ngorongoro Crater, a vast volcanic caldera teeming with diverse wildlife within its natural enclosure; and the awe-inspiring Great Migration, where thousands of wildebeests and zebras thunder across the plains in one of nature's greatest spectacles.

Trekking with expert naturalist guides in 4x4 Land Cruisers through breathtaking terrain, it's possible to encounter the Big Five (lions, leopards, elephants, rhinos and buffaloes) plus cheetahs, wildebeests, zebras, primates, gazelles and countless species of birds.

As each day's adventures draw to a close, retreat to the lap of luxury in premium lodges and tented camps, each offering exceptional hospitality and superior amenities—ensuring your comfort after exhilarating days.

Space is limited to just 24 guests. With significant savings of more than \$1,000 per couple, we anticipate this tour will fill quickly. To reserve, visit cornell.orbridge.com or call (866) 639-0079.

Warmly,
Alumni Affairs
Cornell Alumni Travel

Tanzania Wildlife Safari | Itinerary Highlights (subject to change)

Locations selected for this safari promise excellent viewing of wildlife, however, spotting specific wildlife cannot be guaranteed. Some activities are dependent on weather and seasonal conditions.

Day EN ROUTE FROM U.S.

1

Day 2 **ARRIVE IN ARUSHA, TANZANIA** After an evening arrival at Kilimanjaro International Airport an Orbridge representative will be waiting to assist with your transfer to the hotel.

Overnight: Rivertrees Country Inn

Days TARANGIRE NATIONAL PARK Following

3-4

breakfast and a welcome briefing by your Orbridge Expedition Leader depart for Tarangire National Park for two full days of exploration. Tarangire National Park is known for its iconic baobab trees, sweeping savannas and abundant pachyderm population. This seasonal park has the second highest concentration of wildlife (after the Serengeti), including diverse habitats of dry open woodlands, thorny Acacia thickets, rolling hills, rocky outcrops and extensive swamps. Daily morning and afternoon game drives provide your introduction to Africa's natural beauty, power and wonder. Tarangire reportedly has the largest elephant concentration in the world during the dry season. Also a birder's paradise, the park hosts hundreds of bird species—the highest of any in Tanzania. Between game drives gather for a bush lunch inside the park with time to recount exciting animal sightings and share photographs before setting off again in the afternoon. In the evenings retreat to lodging inside the park.

Overnight: Tarangire Sopa Lodge (B,L,D daily)

Day NGORONGORO CONSERVATION AREA

5

Set out for a morning game drive. Then arrive at Gibb's Farm for a guided farm walk and lunch. This award-winning sanctuary specializes in organic cuisine using farm-fresh ingredients. Take advantage of hands-on experiences including harvesting vegetables, feeding pigs and collecting eggs. Continue to Ngorongoro O'Idemani Mountain Lodge—your stunning accommodations with spectacular views of Mount Oldeani.

Overnight: Ngorongoro O'Idemani Mountain Lodge (B,L,D)

Day NGORONGORO CRATER Explore

6

Ngorongoro Crater, a UNESCO World Heritage Site and one of the seven natural wonders of Africa. The largest intact caldera in the world, this once giant volcano shelters an astonishing diversity of wildlife. During a full-day game drive, spot for the Big Five as well as an array of other species like wildebeest and flamingos. This area is also the best place in East Africa to spot the rare black rhino.

Overnight: Ngorongoro O'Idemani Mountain Lodge (B,L,D)

Days OLDUVAI GORGE | SERENGETI NATIONAL PARK – SERONERA VALLEY

7-8

Glimpse into the origins of humanity at Olduvai Gorge. After an interpretive presentation continue to the Serengeti—Tanzania's oldest and most popular national park. Daily morning and afternoon game drives through awe-inspiring landscapes offer exhilarating opportunities to witness a plethora of grazing animals.

Overnight: Ole Serai Luxury Camps – Moru Kopjes (B,L,D daily)

Days WESTERN SERENGETI | GRUMETI Enter

9-10

the western corridor of the Serengeti, a more secluded and wild side of the park consisting of open savannas, woodlands and floodplains. Daily morning and afternoon game drives afford additional opportunities to observe, explore and learn about these reserves and their diversity of bird and mammal species. As your memorable journey nears its close gather together during a festive bush dinner to reflect upon this meaningful time spent among the many wonders of the Serengeti. Overnight: Mbalageti Serengeti Tented Chalets (B,L,D daily)

Day SERENGETI | FLIGHT TO ARUSHA |

11

DEPART FOR U.S. From Grumeti take the short, scenic flight back to Arusha. Relax in a day room at the hotel until your transfer to the airport this evening for flights home. Day Room: Rivertrees Country Inn (B,L)

Day EN ROUTE | ARRIVE IN U.S.

12

(B = Breakfast, L = Lunch, D = Dinner)



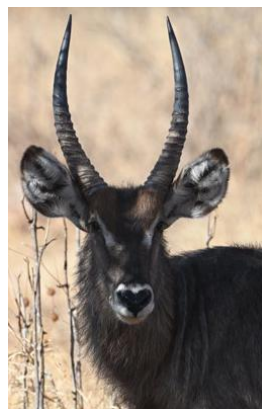
Activity Level: This safari tour requires an ability to walk safely over uneven and slippery ground without assistance, transport luggage a short distance, get in and out of a 4x4 Land Cruiser and physically tolerate vehicle motion on oftentimes bumpy Serengeti roads.

Serengeti Sunrise Safari

While in Serengeti National Park (days 7-8), take a once-in-a-lifetime sunrise safari by hot air balloon.

During this optional excursion, ascend above the southern Serengeti at dawn for an exclusive, birds-eye view of wildlife roaming the expansive landscape. Afterward enjoy a champagne breakfast plus a game drive before rejoining the group.

Excursions must be purchased from Orbridge Guest Services in advance to guarantee availability. Purchase is non-refundable inside 90 days from departure.





What's Included

- 9 nights deluxe accommodations carefully selected to maximize wildlife viewing and comfort
- Access to a day room on departure day
- 9 breakfasts, 9 lunches and 8 dinners including a traditional Tanzanian barbecue and a special farewell Serengeti bush dinner
- Expert naturalist guides throughout including an Orbridge Expedition Leader
- Daily game drives in custom 4x4 Land Cruisers with roof hatch access and guaranteed window seating
- Coffee and tea with meals and filtered water on game drives
- Internal flight from the Serengeti to Arusha
- All main program gratuities
- All taxes, service charges and park fees
- Temporary membership in Flying Doctors Service
- Airport transfers for guests arriving and departing on suggested flights



Orbridge

Orbridge Standard of Excellence

Orbridge understands travel today can be complicated. From cabin or room selection to airport transfers, dietary requests, or pre- or post-tour details—we are dedicated to making your journey seamless and special from the moment you leave home.

Our curated destinations—featuring outstanding properties and ships, meticulously crafted itineraries, and knowledgeable guides, travel directors and expedition leaders—offer life-changing experiences you'll never forget.

Our Guest Services team is staffed by well-traveled professionals who provide personalized attention, ensuring all your questions are answered and all the details of your trip are explained to you.

Our air partners can make flight arrangements for guests. In the event of flight delays and/or schedule changes, they will provide guests with personalized assistance. To book flight reservations with our air partners, contact (206) 319-5011 and select the option for your destination to discuss flight details with our air colleagues. Upon ticketing, a fee will be charged.

Accommodations *(subject to change)*

RIVERTREES COUNTRY INN

Settle into this charming country estate situated within 10 acres of fertile greenery. The grounds are a natural extension of Mt. Meru's sloping foothills.



TARANGIRE SOPA LODGE

Enjoy outstanding accommodations amidst a gorgeous landscape. Amenities include an outdoor pool, centrally located common room, bar and lounge and outdoor terrace.



NGORONGORO O'LDEANI MOUNTAIN LODGE

Relax amidst this five-star colonial lodge situated on a picturesque hill with spectacular views of Oldeani Mountain and the Ngorongoro Crater Rim.



OLE SERAI LUXURY CAMPS – MORU KOPJES

This luxury camp is ideally located within the Central Seronera area of Serengeti National Park.



MBALAGETI SERENGETI TENTED CHALETs

This property offers a breathtaking 360-degree panoramic view of the Serengeti Plain, comfortable and well-appointed rooms, and a refreshing pool.





Optional Pre-Tour Rwanda

Search for the gorillas that traverse the Virunga Mountains for the heart-pounding thrill of observing these giants in their natural habitat.

**Day
+1** EN ROUTE FROM U.S.

**Day
+2** **ARRIVE IN KIGALI, RWANDA** Meet your host and transfer to the hotel for a restful evening.
Overnight: Kigali Serena Hotel

**Day
+3** **KIGALI | KINIGI** Morning sightseeing today includes a tour of the Genocide Museum. Enjoy lunch in Kigali before the drive to the Mountain Gorilla View Lodge where you can rest and prepare for tomorrow morning's trek.
Overnight: Mountain Gorilla View Lodge (B,L,D)

**Day
+4** **KINIGI | VOLCANOES NATIONAL PARK | MORNING GORILLA TREK | KIGALI** After an early breakfast, set out for mountain gorilla trekking in Volcanoes National Park. Encountering these amazing animals up close is a life-changing experience. National park guides will lead you through the thick forest in search of one of the habituated gorilla families that traverse the Virunga Mountains. Upon finding the group, we will have one hour to observe and capture remarkable photographs.
Overnight: Kigali Serena Hotel (B,L,D)

**Day
+5** **KIGALI | FLIGHT TO ARUSHA | MAIN PROGRAM BEGINS** After breakfast take the group flight to Arusha to join fellow travelers to begin the main program. (B)

What's Included

- 2 nights hotel accommodations in Kigali
- 1 night at Mountain Gorilla View Lodge (or similar)
- 3 breakfasts, 2 lunches and 2 dinners
- Excursion transportation, all park fees and one gorilla trek permit
- Temporary membership in the Flying Doctors Service
- Airport transfer for guests arriving on the suggested flight
- Internal airfare from Kigali to Arusha for the main program



Activity Level: Guests should be in very good physical condition with the ability to walk up and down hills in tropical forests on uneven, sometimes rocky, steep and/or slippery, terrain. The forest can be humid and paths may have heavy vegetation.

Optional Post-Tour Zanzibar

Known as Spice Island and overflowing with influences from Africa, Arabia, India, and Europe, Zanzibar is a fascinating destination with a dramatic history, endless coastlines, and a magical atmosphere.

Day 11 **FLIGHT FROM ARUSHA TO ZANZIBAR** After the main program flight from the Serengeti Grumeti airstrip to Arusha, board the quick flight to Zanzibar—the Spice Island.
Overnight: Zanzibar Serena Hotel (L,D)

Day 12 **ZANZIBAR | JOZANI CHWAKA BAY NATIONAL PARK** After breakfast set out on a walking tour of Zanzibar's old town, Stone Town—a UNESCO World Heritage Site—and its market. Visit the House of Wonders, which displays exhibitions dedicated to Swahili culture, as well as the Palace Museum, highlighting its ties to Zanzibar's Omani history. At the Zanzibar Old Fort, discover the fortification's colorful history, from its development in 1698 to how the structure is still being occupied today. After lunch travel across the island through quaint villages and lush vegetation to enchanting Jozani Chwaka Bay National Park—the only national park in Zanzibar and home to the unique red colobus monkey. Enjoy time to explore the forest before returning to the hotel for dinner.
Overnight: Zanzibar Serena Hotel (B,D)

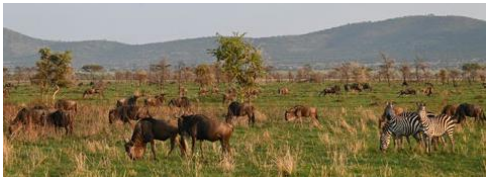
Day 13 **ZANZIBAR | OPTIONAL SPICE PLANTATION TOUR | DEPART FOR U.S.** The morning is at leisure. Depending on departing flight times, you may choose to join the optional spice tour excursion. *(Purchase in advance from our Orbridge Guest Services. Reserve early for best availability as space is limited.)* Relax in the day room at the hotel until taking the complimentary transfer to Abeid Amani Karume International Airport for flights home.
Day Room: Zanzibar Serena Hotel (B,L)

Day 14 **EN ROUTE | ARRIVE IN U.S.**

What's Included

- Internal airfare from Arusha to Zanzibar
- 2 nights at Zanzibar Serena Hotel (or similar) plus a day room on departure day
- 2 breakfasts, 2 lunches and 2 dinners
- Guided panoramic city tour
- Admission to the House of Wonders, the Palace Museum and Jozani Chwaka Bay National Park
- All excursion transportation
- Airport transfer for guests departing at the suggested times





FEBRUARY 24 - MARCH 7, 2026

Rwanda Pre-Tour: February 21-25, 2026

Zanzibar Post-Tour: March 6-9, 2026

RESERVE YOUR SPACE TODAY

Online: cornell.orbridge.com

Phone: (866) 639-0079

Category	Standard Rate	Special Rate*
----------	---------------	---------------

Double	\$9,299	\$8,795
--------	---------	---------

Single	\$10,999	\$10,495
--------	----------	----------

Rwanda Pre-Tour	Standard Rate	Special Rate*
-----------------	---------------	---------------

(includes Rwanda gorilla trek permit)

Double	\$4,899	\$4,695
--------	---------	---------

Single	\$6,099	\$5,895
--------	---------	---------

Zanzibar Post-Tour	Standard Rate	Special Rate*
--------------------	---------------	---------------

Double	\$2,599	\$2,395
--------	---------	---------

Single	\$3,199	\$2,995
--------	---------	---------

Optional Tanzania Excursion	Rate Per Person
-----------------------------	-----------------

Balloon Safari	\$625
----------------	-------

Optional Zanzibar Excursion	Rate Per Person
-----------------------------	-----------------

Spice Plantation Tour	\$79
-----------------------	------

*Special group rates; limited offer. All rates are per person in U.S. dollars based on double occupancy except where noted as Single. Single availability limited. Unless noted otherwise, airfare is not included. **An exclusive Early Booking Bonus, Expedition Libraries are curated collections of useful resources and background reading tailored to this program. Place your deposit on or before the specified date, and one Expedition Library per room will be sent after receipt of final payment. Libraries may be purchased; call for details. Full Terms & Conditions at terms.orbridge.com. Any payment to Orbridge, LLC constitutes your acceptance of the terms and conditions set out therein, including but not limited to the cancellation and refund terms. CST#2098750-40 WST#602828994

DEPOSIT AMOUNT PER PERSON: \$750 pre-tour • \$850 main tour • \$500 post-tour

Orbridge takes seriously the responsibility to minimize our global environmental impact. Each year we plant 100,000 trees in U.S. State Forests with afforestation needs as an ongoing initiative among our evolving sustainability efforts. Learn more at orbridge.com/going-green.





Cornell Alumni Travel
Office of Alumni Affairs
130 E. Seneca Street,
Suite 400
Ithaca, NY 14850

TANZANIA WILDLIFE SAFARI

FEBRUARY 24 - MARCH 7, 2026

Special Alumni Rate:

Save more than \$1,000 per couple

30-DAY REFUND GUARANTEE

While Cornell is pleased to facilitate travel opportunities for its alumni and friends with tour operators that specialize in high-quality educational travel, please be aware that Cornell does not conduct, manage or operate these travel experiences, or act as an agent for travelers interested in tours. Tour operators and travelers are responsible for making their own safety decisions concerning this travel, and, as a facilitator between travelers and the tour operators with whom travelers make arrangements for completing travel, Cornell's role and liability are strictly limited. Specific tour operator and national health and safety protocols will apply to each trip, and travelers should review all protocols and trip terms and conditions, including terms and conditions regarding cancellations, refunds, health and safety, and insurance prior to making a reservation. Cornell is not responsible for changes to trips or travel arrangements or for losses, expenses, damages, or injuries resulting from travel.

PRSR STD
U.S. POSTAGE
PAID
PERMIT NO. 825
SAN DIEGO, CA

Reserve by
June 27, 2025**

FREE EXPEDITION LIBRARY
AN EXCLUSIVE EARLY
RESERVATION BONUS