

Price \$1

# Winchelsea Star

Your Weekly Community Newspaper

Since 1977

Vol 46 Ed 49

*Tuesday 19 December 2023*

[winchelseastar.org.au](http://winchelseastar.org.au)



**MERRY  
CHRISTMAS**  
AND HAPPY NEW YEAR



Fabulous

- Pizzas
- Pastas
- Souvlakis
- Burgers
- Desserts


Thurs & Sun  
3-8pm  
Fri & Sat  
3-9pm

21 Main St  
Winchelsea  
5292 2120

 Sandy'z



# MGT BUILDING & CONSTRUCTION

NEW HOMES | EXTENSIONS | RENOVATIONS Ph: 0409 433 687  REGISTERED Building Practitioner

## YOU CAN'T CONTROL FIRE, BUT YOU CAN PREPARE FOR IT.

The best way to keep you and your loved ones safe this fire season, is to make sure you have a fire plan.

Go to [fireplanner.vic.gov.au](https://fireplanner.vic.gov.au) to create your personalised fire plan now.

**HOW WELL DO YOU KNOW FIRE?**

Authorised by the Victorian Government, 1 Treasury Place, Melbourne





## Knuckkeys Engineering at the Winchelsea Bowls Club for their Christmas Break-Up on 16 December



## Winchelsea Lions Club drew their Christmas raffle of vouchers for groceries at IGA on Saturday

Linda Carter

3rd prize went to Daryl Wilson,  
2nd prize went to Joel and  
1st prize was won by no other than Ashwani  
who very generously donated back  
\$50 vouchers to 6 lucky people,  
M Perry, J Pitcher, R Clark, R Taylor,  
J Kennedy, Diedre.

The Lions Club would like to thank everyone  
who supported us, and who also purchased  
cakes and puddings. The proceeds of  
this raffle will go towards a public access  
defibrillator (more about that later)

The members of Winchelsea Lions  
would like to wish our wonderful community a  
very happy and safe Christmas and New Year  
and our heartfelt thanks  
for your support through this year.

We are here to serve you and the wider  
community when needed.



# Winchelsea Historical Society

Hesse Street cnr Princes Highway, Winchelsea, VIC

Email: winchelseahistsoc@gmail.com Facebook: Winchelsea & District Historical Society

## Winchelsea Street Names



### REYNOLDS STREET

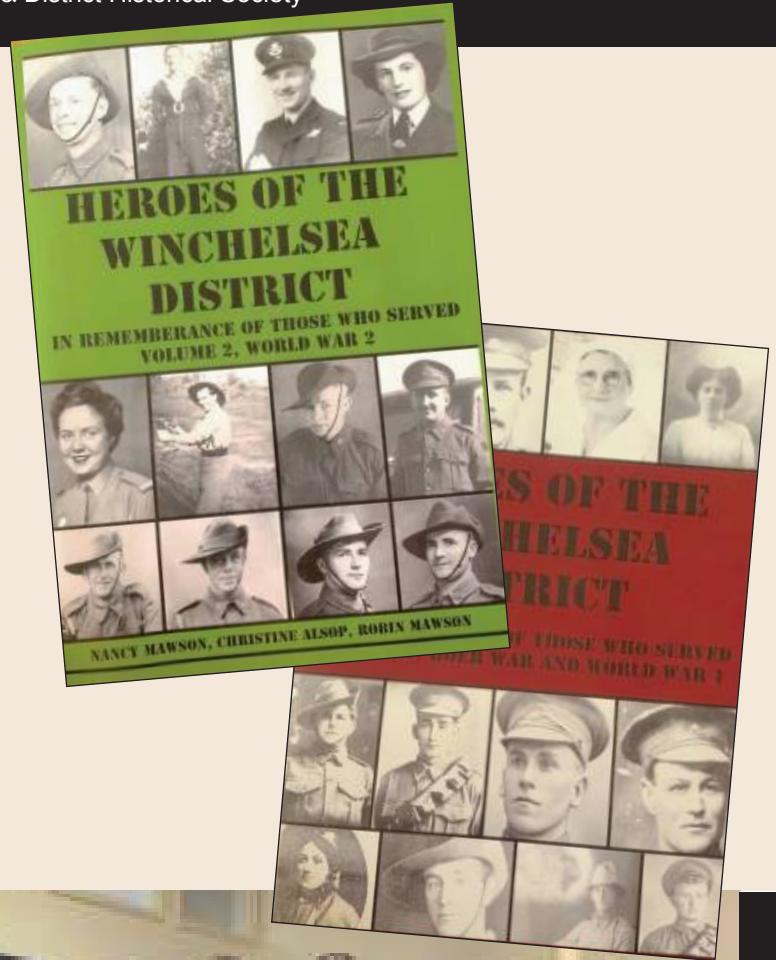
Harold Reynolds was born in Winchelsea to James and Margaret Reynolds née McConachy. The family had a farm in Swaby's Lane and he gave his address as "Tutegong".

He joined the A.I.F in 1915. He contacted pneumonia and died at the Australian General Military Hospital 29 days later.

His brother Robert enlisted in the A.I.F on the same day. After a long service he married Lydia Yates in England and was discharged in 1920 returning to "Tutegong" near Winchelsea.

Three of Robert's children - Adryan, Harold and Joan - and Alfred ( son of William and Isabella) all enlisted.

All their stories are told in the books on Heroes of the Winchelsea District by Nancy Mawson, which are available for sale at the Historical Society.



The Winchelsea and District Historical Society was established in 1981 for the preservation of local history. It is a non-profit organization staffed by volunteers to research and preserve the history of the area. Please call and see our great display.

### District background

Winchelsea is a pleasant rural town by the banks of the picturesque Barwon River. The area (37 kms south west of Geelong) is serviced by the Princes Highway. Significant homesteads and woolsheds such as 'Barwon Park,' 'Wormbete' and 'Ingleby' reflecting status and success from early squatting days, are in the vicinity. The township was at first called 'Austin's Ford,' then 'The Barwon' and finally

officially named after an old English port. When a bridge was constructed over the river, our town was established as the gateway to the Western districts.

### Research facilities

Facilities include 2 x computers, printer and scanner. Microfiche covering Geelong and surrounding cemeteries. Early Shipping. B.D.M. Pioneer Index. Microfilm of early Barrabool and Winchelsea Rate Books. Winchelsea and surrounding area Cemetery records. Baptism registers. Family histories. Marjorie Lawrence collection and audio tapes. Books include: History of the Shire. School Centenary. Deans Marsh story. We also have Parish Plans for Winchelsea Shire.

# Winchelsea Fire Brigade Santa Run Friday 22 December 2023



**Santa and his helpers will be at the following locations -**

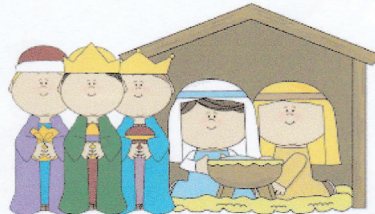
- |        |                          |
|--------|--------------------------|
| 6:30pm | Football Oval Playground |
| 6:40pm | Main St Rotunda          |
| 6:50pm | Dwyer St Playground      |
| 7:00pm | Armatage St Playground   |
| 7:15pm | Barwon Tce Playground    |



This year we also will be going down some streets for those that can not make it to the designated area, but if you would like a quick photo with Santa please head to one of the areas chosen.

Winchelsea Fire Brigade  
21 Harding Street, Winchelsea, VIC <https://www.facebook.com/winchelseafirebrigade>

## WINCHELSEA CHRISTMAS CHURCH SERVICES IN TOWN



**Christmas Eve – 7pm at St Thomas' Anglican**

**Christmas Morning**

**9am**

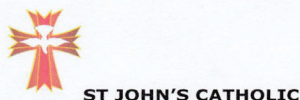
**St John's Catholic Church**

**St Thomas' Anglican Church**

**(No Service at the Uniting Church)**

**Come and join with people of Winchelsea  
in Christmas Celebration Services**

Further details: Lyn 0400 649 652 or Marg 0418 983 005





## Winchelsea Common revitalisation

Preparations for reopening the former go-kart section of Winchelsea Common are progressing well, with new paths taking shape along with seating and signage set for installation early in the New Year.

Contractors have recently installed a crossover culvert which will enable linking of the new paths with Gladman Street, and help address localised flooding issues.

The new works will provide access to a beautiful viewing area of the Common featuring one of its large River Red Gums.

This area contains contaminated soil from throughout the site that is safely capped with non-contaminated soil, while the existing fencing continues to protect areas of sensitive vegetation that will be able to be viewed closer than before.

Once completed, the works will finalise the revitalisation of parts of the Common following its decade-long closure due to contamination from former gun club activities.

The reserve was reopened for restricted public access in March 2022 following extensive clean-up work by the then Department of Environment, Land, Water and Planning, and Council.



## Gathering Space shelter

The new Barwon River gathering space shelter is taking shape, with construction underway.

The structure is due for completion by the end of the month and internal furniture is on order and will be installed about March 2024.

Landscaping work around the shelter including addition of an access ramp and stairs is expected to be completed during the first few months of 2024.

## Adventure Play Space feedback

**Community feedback has shown clear preference for use of natural timbers and natural colours in construction of the new Adventure Play Space beside the Barwon River.**

Final designing of the park is now underway and the project will go out for tender early in 2024, with start of construction scheduled for mid-year.

Plans for the Play Space promise fun times, with elements to stimulate and delight including a flying fox with wheelchair access and accessible seat, embankment slide and elevated cubby pods.





Thanks to everyone who helps get the Star out every week

## WINCHELSEA STAR

Your weekly community newspaper since 1977

### COMMITTEE

Mick O'Mara, Cathy Cheadle, Tony Phelps, Linda Carter, Sasha Gauntlett, Neil McInnes, Judy Cameron, Yvonne Stevens, Cerrie Forgan

### PRODUCTION

Cerrie Fogan, Yvonne Stevens, Judy Cameron, Sasha Gauntlett, Neil McInnes, Stuart Fountain, Tony Phelps, Susan Corby

### PRINTING

Harry Kahle, Cromwell Hooper, Stewart Mathison & Winchelsea Community House staff who happily pitch in when needed.

### SPECIAL THANKS

Wendy Greaves Winch House, Winch Websites

### DISTRIBUTION

Linda Carter, IGA, Main Street Milk Bar, Winchelsea Post Office, Foxes' Den, Winchelsea Community House, Hewitt and Whitty Hardware, Moriac General Store, Hesse Rural Health

### ADVERTISERS

### CONTRIBUTORS

### VOLUNTEERS

### SUBSCRIBERS and READERS

### COMMUNITY CONTRIBUTORS

Winchelsea Community Groups  
Winchelsea Emergency Services  
Winchelsea Community Service Groups  
Winchelsea Gardening Groups  
Winchelsea Sporting Clubs  
Winchelsea Churches



**Thankyou**

Auslan

# Deans Marsh Primary School

## Students fundraised for Open Water Program



### Russell Taylor-Shaw

On Friday 8th December our whole school were lucky enough to travel to Anglesea beach for a day hosted by Southern Exposure.

The Grade 3 to 6 students started the day with surfing in some awesome Anglesea waves and the Prep to 2 students were kayaking in the Anglesea river.

All students joined in by immersing themselves in their activities and did a marvellous job of listening to all instructions.

After a quick lunch break, students swapped activities and somehow had the energy to keep trying their best and having a go.

A big thank you to the fabulous staff at Southern Exposure for running the activities.

Thanks also to our Junior School Council of students for choosing this event as our end of year celebration excursion. Students have been fundraising all year for it by toasting sandwiches for lunches for 20 cents each.

A fine achievement and a great event to finish off the 2023 school year.

To all the friends of our school within the community, have a fabulous Christmas holiday break and thanks for making our school so special! Your ongoing connection with the school has made a positive difference to our students and their families. Thank you.

If you wish to learn more about our unique school, please call us on 52363264 to arrange a visit, or check out our website at: <https://www.deansmarshps.vic.edu.au/>

Deans Marsh is a wonderful place with unique nature and wild life. Our school wishes to acknowledge that we are on the traditional lands of the Gadubanud people. We pay our respects to their elders, past, present, and future.

As our 2023 school year draws to a close, we look ahead to next year with a sense of excitement and anticipation at our adventures ahead...



Images Freepik

### 2024 DATES AT DMPS

Mon 29 Jan	School Opens
Tues 30 Jan	Students Start
Wed 31 Jan - Wed 28 Feb	No Preps on Wednesdays
Mon 5 Feb Fri 16th Feb	Swimming Program at Lorne Sea Baths
Tues 20 Feb	Welcome BBQ
Thur 29 Feb	Polwarth Sports – Family-friendly P-6 sports event
Fri 1 March	Food Fight Fundraiser
Wed 29 – 31 May	Year 3-6 Camp





# High Tea in Residential Aged Care



This week our wonderful Hospital Auxiliary volunteers joined our Aged Care residents for a Christmas themed high tea.

They were joined by Santa Claus and the amazing vocal talents of Helen Ling. Helen you have the voice of an angel, thank you for sharing the beauty of your music with us!

A big thank you to the Hospital Auxiliary who joined us, Murray Aisbett for spreading Christmas cheer and all of our wonderful staff members who made the afternoon happen.



## Calls for booster seat law change

Most children up to 10-12 years of age need a booster to travel safely

Leading safety agency Kidsafe Victoria is calling for legislative changes to make booster seats mandatory for children until they are 10 and/or pass the 5 step test, to ensure they do not graduate to using an adult seat belt until they are tall enough to safely do so.

CEO Melanie Courtney emphasised the need to adopt best practice guidelines to ensure parents and carers are provided with clear advice on the optimal use of child car restraints. "Even though our children appear tall in our eyes, most children up to the age of 10-12 will require a booster seat to optimise their safety in the event of a collision.."

The risk of serious injury for children who can still fit in a booster seat but don't use one can be up to 3.5 times higher. Current laws require children over 7 years to travel in a booster seat or an adult seat belt.

Red Hill parent Lisa Farnsworth said her son Sam was proof of the dangers of graduating children too early from a booster seat. In 2019, the 11-year-old was involved in a severe collision that left him quadriplegic. Lisa believes if there had been clearer guidelines regarding booster seats, her son might have suffered less serious injuries.

Ms Courtney advised "Kidsafe Victoria recommends that children only transition to using an adult seat belt when they can pass the 5 step test."



### THE 5 STEP TEST

A child can obtain a good seat belt fit if the answer to all questions in the 5 step test are yes.

- Back: Can the child sit all the way back against the vehicle seat back?
- Knee: Do the child's knees bend comfortably in front of the front edge of the vehicle seat?
- Lap belt: Is the lap belt sitting low across the hip bones touching the thighs?
- Sash belt: Does the sash (shoulder) belt sit across the middle of the shoulder, not on the neck or out near the arm?
- Stay: Can the child stay seated for the whole trip?

### National Best Practice Guidelines

The aim of these guidelines is to provide parents, carers, and road safety practitioners with clear advice on optimal use of child restraints and seat belts by children aged 0-16 years when travelling in motor vehicles, to minimise their risk of injury in the event of a crash.

[www.kidsafevic.com.au/road-safety/child-restraints/child-restraint-laws/](http://www.kidsafevic.com.au/road-safety/child-restraints/child-restraint-laws/)

# Winchelsea Star

## contact us

### NEWS and ARTICLES ARE MOST WELCOME

Include name and address of the sender  
 Email [news@winchelseastar.org.au](mailto:news@winchelseastar.org.au)  
 Leave hard copy at IGA Supermarket

### DEADLINES

#### 5pm Fridays

4pm Sundays - hard copy articles left at IGA  
 6pm Sundays - sports results and weekend events

### FREE DIGITAL SUBSCRIPTION

[winchelseastar.org.au](http://winchelseastar.org.au)

### ADVERTISING

[advertising@winchelseastar.org.au](mailto:advertising@winchelseastar.org.au) 0408 102 802  
 600 online subscribers,  
 250 copies printed for outlets around Winchelsea

## follow us

### ONLINE

[winchelseastar.org.au](http://winchelseastar.org.au)

### FACEBOOK

[facebook.com/TheWinchelseaStar](https://facebook.com/TheWinchelseaStar)

### PRODUCTION

<b>Editors:</b>	Cerrie Fogan, Yvonne Stevens, Judy Cameron
<b>Advertising:</b>	Sasha Gauntlett, Neil McInnes
<b>Design:</b>	Tony Phelps, Susan Corby
<b>Printing:</b>	Winchelsea Community House
<b>Website:</b>	Winch Websites

### COMMITTEE

<b>President:</b>	<a href="mailto:president@winchelseastar.org.au">president@winchelseastar.org.au</a> Mick O'Mara
<b>Treasurer:</b>	<a href="mailto:treasurer@winchelseastar.org.au">treasurer@winchelseastar.org.au</a> Cathy Cheadle
<b>Secretary:</b>	<a href="mailto:secretary@winchelseastar.org.au">secretary@winchelseastar.org.au</a> Tony Phelps
<b>Members:</b>	Linda Carter, Sasha Gauntlett, Neil McInnes, Judy Cameron, Yvonne Stevens, Cerrie Forgan,

© Winchelsea Star Org. Inc. All rights reserved  
 Winchelsea Star Organisation Inc.  
 Reg. No. A0053999F, ABN: 75 941 529 279  
[winchelseastar.org.au](http://winchelseastar.org.au) PO Box 5, Winchelsea, 3241  
 Views expressed are not necessarily those of the  
 Winchelsea Star or its Committee. The Winchelsea  
 Star reserves the right to edit or not publish any article.

## You can write for the Star

We want the Star to inform, engage, inspire, and interest the residents of Winchelsea and surrounds. And we need your writings to get there.

The Star has no actual reporters or designated writers - we publish what you send us. If you have some news, an opinion, an interest or perspective, or a story - we'd love you to send it in for publication.

The Star loves to hear anything of direct interest to the Winchelsea community. The more local content we can put in, the better!

### How much can I write?

You can write just one article. You can start a new column about something you're interested in. You can send us a series of articles on a theme. What would **you** write about?

Your article can spread over 1 or 2 pages (approx 850 words) or you can write longer pieces and split them across multiple editions.

Add a photo or two, an article title and author's name (preferably).

### Can you publish my photos?

A picture is worth a thousand words - but context is very interesting too! If you have a photo you'd like in the Star, add a few words describing where, when, who, why and/or what.

### Ask permission to use photos

When you send us a photo, you give us implied permission for reproduction.

You have liability when publishing an image, so be sure you own the image or have written approval to use it. It is easy for copyright owners to find stolen images online, where the Star can be found.

### Legalities

Our Editors will not approve anything libellous (ie. when a false statement is published in written form and does harm to a victim). The Star is a community newspaper - 'for' and 'against' opinions on contentious topics are welcome, but attacking individuals or groups is not.

We look forward to hearing from you.  
 Simply email [editor@winchelseastar.org.au](mailto:editor@winchelseastar.org.au)

**GET YOUR  
FREE DIGITAL  
SUBSCRIPTION  
TODAY!**  
[winchelseastar.org.au](http://winchelseastar.org.au)



# Winchelsea Star COMMUNITY NOTICEBOARD FREE ADS

The Winchelsea Star is pleased to print  
Announcements of local Births,  
Engagements, Marriages, Birthdays,  
Anniversaries, Deaths and Funerals.

Email editor@winchelseastar.org.au  
or leave at Winchelsea IGA

## WINCHELSEA HOSPITAL LADIES AUXILIARY OP SHOP

The Winchelsea Op Shop Ladies  
Auxiliary would like to wish all our  
customers and the community  
who support us over the year  
a very Merry Christmas and  
a Happy New Year

We will be  
closing at 4pm on Monday Dec 18th  
and opening on Friday 12th at 10am

## WINCHELSEA LIONS CLUB

**Christmas cakes and puddings**  
Now available Ray 0406 371 239  
Winchelsea Lions  
annual community fundraiser.

## WINCHELSEA LIONS CLUB

### SHREDDED PAPER

Winchelsea Lions Club has shredded  
paper suitable for bedding for pet mice,  
guinea pigs, chicken boxes  
or worm farms.  
Gold coin donation at Lions paper shed  
behind Senior Citizens, Harding St.  
0476 475 422.

### 'WHAT A GREAT IDEA!'

Coffee cup holders available  
from participating coffee shops or  
Winchelsea Lions, 0476 475 422  
100% funds raised go back into the  
community and saves on landfill.  
\$2 for 2 cup, \$4 for 4 cup



# Winchelsea Churches



Image Freepik

## Winchelsea Uniting Church

Hesse St, Winchelsea 3241  
uca.winchelsea@gmail.com  
0475 777 301  
Services 9.30am Sundays

## St John's Catholic Church

**Mass Times - December**  
Winch 6pm Sat Dec 16/23/30  
Inverleigh 4pm Sun Dec 17  
Christmas Day: Winchelsea 9am  
**Mass Times - January**  
Winch 6pm Sat Jan 6/13/20/27  
Inverleigh 4pm Sun Jan 21  
Harding St, Winchelsea 3241

Father Joseph Panackal  
0404598558

## St Thomas' Anglican Church

10am  
Barwon Tce, Winchelsea  
Rev'd Phil Jacobson  
stthomaswac@gmail.com  
0477 672 042

## Thought for the Week

"Do not be anxious about anything,  
But in everything, by prayer and petition,  
with thanksgiving,  
present your requests to God.  
And the peace of God  
which transcends all understanding,  
will guard your hearts and mind  
in Christ Jesus."

**John Bader,**  
Former U/C Accredited Lay Preacher

# Carols Around Our Town

-WINCHELSEA -  
20th December 2023

Starting at 5PM  
at Hesse Rural Health

## Marg Bushell

We are hoping that children and  
adults will dress up for "Carols  
around our Town."  
People wanting to go into Hesse will  
be required to have a COVID test,  
available at Hesse. Will need to be  
here at 4-45pm to allow for the test..

## Hesse Rural Health Gosney Street Winchelsea

Hark the Herald Angels Sing	p7
0 Little Town of Bethlehem	p24
Silent Night	p19
0 Come all Ye Faithful v1, 3, 4, 6	p12
Away In A Manger	p4

## The Green Deans Marsh/Lorne Road

Hark the Herald Angels Sing	p7
We Three Kings v1, 2, 3, & 5	p 22
The First Nowell v1, 2, 3, 4	p20
Silent Night	p19

## Bendigo Bank, Main Street

The First Nowell v1, 2, 3, 4	p20
Away In A Manger	p4
Joy to the World	p15

## IGA, Main Street Winchelsea

0 Come all Ye Faithful v1, 3, 4, 6	p12
Silent Night	p19
Hark the herald Angels Sing	p7

## Hesse Health Units

<b>Hesse Street Winchelsea</b>	
Hark the herald Angels Sing	p 7
We Three Kings v1, 2, 3, 5	p22
0 Come all Ye Faithful v1, 3, 4, 6	p12

## Eva Schroeter, 34 Austin Street

Silent Night	p19
Joy to the World	p15
0 Little Town of Bethlehem	p24

## Anywhere else

We Three Kings v1, 2, 3, 5	p22
Silent Night	p19
The First Nowell v1, 2, 3, 4	p20

## Everyone welcome to join us singing carols

Thank you for all your support.  
Happy and safe Christmas  
and for 2024.

# COVID REPORT

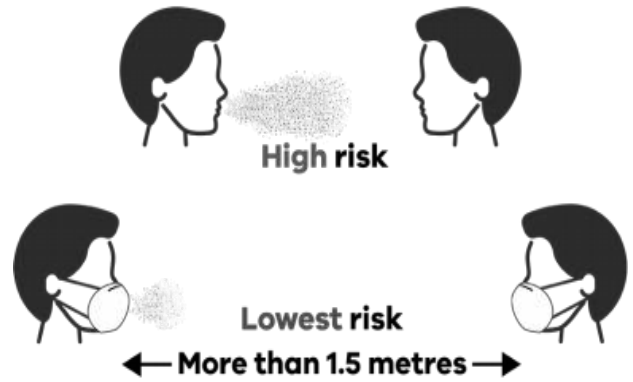
from <https://www.health.vic.gov.au/>

Quantitative wastewater measures indicate there are high COVID-19 viral loads in Victorian wastewater. Metropolitan wastewater catchments have shown increased levels in the most recent samples, while regional quantitative wastewater levels continue to remain high.

CASES 7 day av: 208  
HOSPITALISATIONS: 266

Deaths in the most recent 28-day period (01/11/2023 – 28/11/2023) have continued to increase, compared to the prior 28-day period (04/10/2023 – 31/10/2023), with a current 28-day total of 178.

(Note that reporting periods for deaths are lagged by 2 weeks to allow for delays in data collection)



## What are the ways of protecting from COVID-19?

Keep physical distance of at least 1 metre from others, even if they don't appear to be sick. Avoid crowds and close contact. Wear a properly fitted mask when physical distancing is not possible and in poorly ventilated settings. Clean your hands frequently with alcohol-based hand rub or soap and water.

### OZ TREES NURSERY & TREE PLANTING SERVICES

- Affordable seedlings—over 200 species
- Complete plantation service—farm forestry, shelter, aesthetics
- Deep ripping & mound ploughing. Rotary bed forming
- Our experienced staff will help you select species for your site conditions and needs

Also available—tree planting tools, milk cartons, plastic tree guards & bamboo stakes

569 Warrowie Rd. Colac  
P: 5233 6280 F: 5233 6393  
E: [info@oztrees.com.au](mailto:info@oztrees.com.au)  
W: [www.oztrees.com.au](http://www.oztrees.com.au)  
Open Monday—Friday  
9am—4:30pm



**Phone OzTrees for professional advice,**

**WINCH WEBSITES**  
WEB SOLUTIONS SIMPLIFIED.

## WEBSITES

**GROW business  
INCREASE reach  
SAVE time**



**Find out what a website  
could do for you**  
[winchwebsites.com.au](http://winchwebsites.com.au)  
04 887766 20



## Your Taxation & Superannuation Specialists.

Winchelsea  
**5267 2673**  
[www.surftax.com.au](http://www.surftax.com.au)

## Simco Plumbing and Gasfitting

24/7 Emergency service Ph:0400643976

- All General Plumbing and Gasfitting
- Roof and Gutters, Hot Water service changeover
- Split Systems, Air Conditioning and Wood Heaters
- Irrigation, Septic and Treatment plants
- Excavation, Bobcat and Tipper
- Rain water Tank installation
- Renovations and Extensions
- Gas conversions and servicing

Simon McGillivray  
Lic:109610. Free quotes, Fast and friendly service

## B & H Modifications Bob Verity

55 Stephenson Road  
Winchelsea 3241  
Ph: 5267 2467  
Mobile: 0411 610 678



### Industrial Sewing Machine Work

Caravan Annexes, Trailer Covers,  
Shade Sails, Alterations and  
Repairs to  
Camping and Tents.  
Clear PVC Blinds  
Repairs to CLEAN Horse Rugs  
No Job Too Small  
Email: [bobverity@southernphone.com.au](mailto:bobverity@southernphone.com.au)

# Tiny Houses on Wheels pilot starts in the Surf Coast Shire

## Surf Coast Shire

Applications are open for a Tiny Houses on Wheels (THOWs) Pilot in the Surf Coast Shire, as Council continues to seek solutions to the affordable housing and key worker accommodation crisis.

Council endorsed the three-year pilot at its December Council meeting, with Mayor Liz Pattison looking forward to seeing the housing option explored across the Shire. "Issues surrounding the regulation of tiny houses on wheels are complex and largely uncharted in Victoria," she said. "The pilot will enable us to assess the impacts of tiny houses on wheels and monitor and evaluate the contribution they could make as a safe and legal way to provide affordable and diverse housing options."

The pilot will run until December 2026, with the THOWs required to be on a wheeled trailer base and placed on privately-owned land, subject to an agreement between the applicant and land owner.

Assessment criteria include legal compliance, environmental impacts, amenity, access, waste management, connection to services and utilities, and safety. The tiny house must not be located in a Flooding Overlay or Bushfire Management Overlay, unless within a township boundary

"If successful, applicants will be granted a Temporary Residence permit under our Community Amenity Local Law 2021, subject to terms and conditions," Mayor Pattison said.

"It's important to note that the pilot focuses entirely on possibilities for affordable housing and key worker accommodation, and does not permit the tiny houses on wheels for short-term leisure-style accommodation."



Photo credit *Aussie Tiny Houses*

"We know that protecting the character of the places we call home is vital for community members, as is protecting amenity — which is addressed through minimum setbacks," Mayor Pattison said.

"We're also clear in what a tiny houses on wheels is. In this pilot, we aren't classing caravans, wagons, vans, tents, transportable homes or shipping containers as tiny houses on wheels."

"We're among the first councils in Australia to endorse a tiny houses pilot, and we're proud to be proactive in this space to provide key workers with a potential accommodation solution," the Mayor said.

"It could also enable residents — some who might currently be living in unaffordable or unsuitable housing — to stay in their community close to their jobs, social networks and family, perhaps in a multi-generational household.

To learn more about the Tiny Houses on Wheels Pilot — including the application checklist, process and frequently asked questions — visit [surfcoast.vic.gov.au/THOWs](http://surfcoast.vic.gov.au/THOWs).

---

## Ban on deadly engineered stone to keep workers safe

### Victorian State Government

The Government will ban the use of all engineered stone in Victoria from July 2024 to protect workers from the devastating lung disease silicosis.

Victoria led the nation introducing the toughest regulations and the country's first licensing scheme for businesses working with crystalline silica, and now will ban engineered stone through changes to occupational health and safety laws.

Businesses and consumers are asked not to enter into contracts for engineered stone products from 1 January 2024, given the contracts may not be able to be legally fulfilled. Ministers agreed to consider at a meeting in early 2024 if there will be a need for a period of transition for contracts entered into before today.

From 1 July 2024, Victorian employers will no longer be permitted to carry out work involving the manufacturing, supply, processing or installation of engineered stone. The Commonwealth Government has also confirmed an intention to ban the importation of the product, providing further protections.

An exception to Victoria's prohibition of all engineered stone will apply if the work involves the removal, repair or minor modification of product installed in a premises before 1 July 2024. This work will be subject to existing control requirements for engineered stone and additional high-risk crystalline silica work regulations.

Until the ban takes effect, Victoria's existing laws in relation to exposure to crystalline silica dust and working with engineered stone will continue to protect workers.

Victoria established its Silica Action Plan in 2019 with actions aimed at preventing exposure to crystalline silica dust and providing early intervention and support for affected workers.

The national ban follows a report by Safe Work Australia that recommended a prohibition on the use of all engineered stone, regardless of crystalline silica content.

Safe Work Australia's report defines engineered stone as an artificial product that contains crystalline silica created by combining natural stone materials with other chemical constituents such as water, resins or pigments and hardened.

## Premier's Design Awards finalists announced

### Victorian State Government

Finalists for the 2023 Victorian Premier's Design Awards show how design innovators are creating positive change for communities and businesses.

Minister for Creative Industries Colin Brooks has announced the finalists for this year's awards which shine a light on Victorian designers, architects and businesses using design to improve the way we live, work, learn and interact.

Finalists include the new tourism infrastructure at the UNESCO World Heritage listed Budj Bim Cultural Landscape, a tool that tests food in minutes to reduce waste and improve food safety, a powerful bike light for off road riding, and a remote medical monitoring system to help vulnerable people living at home.

This year saw a record number of finalists, with 118 innovative projects selected across the categories including product design, fashion, architecture, service and strategy design, digital and communication design, and a dedicated category for Victorian tertiary design students.

Change-making projects include a new service model providing integrated peer, health and employment support to people who have been recently released from incarceration; and an app that supports tradies to manage their mental health.

Winners will be announced in March 2024. Find out more at [premiersdesignawards.vic.gov.au](http://premiersdesignawards.vic.gov.au)

## Commonwealth follows Victoria's lead on wage theft

### Victorian State Government

The Victorian Government led the nation in making wage theft a crime – and now wage theft will be outlawed in every state and territory following federal legislation.

Wage theft is a problem across the economy so Victoria acted to ensure employers who stole money and entitlements from their workers would face the full force of the law. Now the bill has been passed by Federal Parliament, Commonwealth legislation overtakes the Victorian wage theft scheme.

Victoria introduced the Wage Theft Act in 2020, creating an Australian-first offence for employers who dishonestly withhold employee entitlements.

The Government congratulates the Wage Inspectorate, and inaugural commissioner Robert Hortle, for its groundbreaking work in this field and for many successes in child employment, long service leave and owner-driver regulation.

The Inspectorate helped workers reclaim more than \$1 million in unpaid long service leave entitlements in 2022-23 alone, benefitting 1,400 workers.

Wage Inspectorate Victoria's education arm helped more than 15,000 businesses and workers last financial year and more than 425,000 people accessed the educational tools and resources on its website.



**Scott McDonald**  
0423 413 829

**S.J.R AUTOMOTIVE**  
ABN 942 483 848 38  
13 ALSOP DRIVE, WINCHELSEA VIC 3241

**DAVIC AG**

**CONTRACTING AND EARTHMOVING**

For all your harvesting needs  
Mowing, raking, round bailing, paddock prepping, spreading and sowing

Call Dave on **0417 579 973** Bambra



**WINCHELSEA CONCRETING**

• Driveways • Sheds • Decorative Concrete • Raft Slabs

**Robert Murphy**  
0438 235 237  
[winchelseaconcreting@outlook.com](mailto:winchelseaconcreting@outlook.com)

**Knuckey's Winchelsea**  
Ph: 5267 2011

Knuckey's have in stock a complete range of batteries to suit tractor, heavy machinery, cars, utes

The largest range of the best oil for your vehicles—**CASTROL**—  
*'when only the best will do'*

The largest range of V belts.  
A, B, C, D M Sections  
Bolts and nuts for all occasions  
Steel cut to size



# Winchelsea Community House

Monday-Friday 9am -2pm (03) 52672028  
28 Hesse Street, Winchelsea  
www.winchhouse.org.au reception@winchhouse.org.au

## WINCH HOUSE AGM AUSPICE REPORTS 2022/23

### Winchelsea Youth Leisure Drop-in (WYLD)

#### Monique & Robyn

2023 has been a quieter year for WYLD with not as many consistent catch ups as our young people would like.

WYLD'S biggest struggle is not having a suitable permanent space set up, especially over winter, and having enough volunteers to run the group regularly and consistently.

A Volunteer recruitment or an employed youth worker is needed for the sustainability of the group moving forward.

Financially WYLD is still in a good position to offer free or low-cost activities to the youth of the community for at least 12 months. WYLD was also fortunate to receive funding from the Bendigo Bank this year to support in-house activities and local events.

WYLD will plan to return for youth activities in 2024. We would also like to on-board more mentor volunteers to support the group facilitation.

Our young people in the Winchelsea community need this group to be active and consistent, and we are eager to grow, support and meet these needs. If you know someone who can help out, please get in touch with manager Wendy at Winch House ([winchhouse.org.au](http://winchhouse.org.au)).

---

### Wensleydale Rural Community Group (WRCG)

#### Chris Trotter

Our FFOTM (first Friday of the month) Group held social dinners every month. The dinners continue to play an important role in developing and maintaining a connected and supportive community.

Our group again supported the local community children's Xmas event by providing sweets for Santa to hand out as the Wurdale Fire Brigade truck travelled around the local area. Planning to support a similar event with WFB for 2023 Xmas Eve and potentially Easter next year. Planning has also commenced for our Community Xmas Event at the Wurdale Hall.

Unfortunately, we were not successful in our application for a Surf Coast Shire grant to erect a front fence at our local Wurdale Hall for the safety of children in the playground or attending events. This was disappointing as we were able to raise \$3,000 towards the cost at our 2022 Xmas Get Together and prior discussions with the Shire were supportive.

### Winchelsea & Surrounds Recovery Network (W&SRN)

#### Frank Dean, Interim Chair

The remnants of the COVID epidemic hampered the activities of the W&SRN for the first couple of months of the 2023 reporting period. For example, Community Leadership Courses planned for Jan/Feb were postponed.

Other major activities conducted by the committee on behalf of the community were to:

- Consolidate and update Strategy and Community literature
- Review Start Up Kit items & top up from Surf Coast Shire (SCS) resources
- House a SCS specific use kit at the Wurdale Hall
- Re-write the W&SRN Inventory list
- Submit application to Bendigo Bank for a Wurdale Hall located defibrillator
- Quick Start-Up sheets for the Community Support Centre were developed, which includes items such as Wurdale Hall floor plan set-up.

Discussions were held with the SCS (Mandy Baker), re: results from the last Australian Census highlighting Community Demographics and Distribution. Two areas requiring further investigation were identified as:

- Number of families with young children in the Gherang area
- Number of two member households (Retirees?) in the Bambra area

Through the SCS, Lisa Jarvis facilitated a meeting where the W&SRN Vision, Mission and Guiding principles were reviewed. The consensus was that the W&SRN was progressing well when measured against the parameters reviewed. The point was made however that some of the documentation was too detailed for community member use.

The issue of how to simplify emergency messages to the community was raised during the reporting period. Examples developed since the Black Saturday Fires, from various local government districts in Victoria, were obtained for assessment. A new community Emergency Information document is being developed for community distribution prior to Christmas. The format will be largely pictorial in a concise single sheet, double page format.

Climatic conditions for 2023 and 2024 in particular, are forecast to be challenging. The W&SRN will continue information flow to the community and support the efforts of other agencies to establish Safe, Calm and Connected communities.

## Recycling medical equipment builds jobs and helps environment

### Victorian State Government

The Victorian Government has supported a New Zealand medical device remanufacturer to set up in Victoria, creating dozens of local jobs.

Minister for Economic Growth Tim Pallas announced Medsalv is finalising site selection for the manufacturing and R&D facility, which will introduce new sustainable remanufacturing capabilities to the Australian healthcare ecosystem.

The company's product recycling portfolio includes patient transfer mattresses, deep vein thrombosis prevention sleeves, blood pressure cuffs and tourniquets.

The new Victorian headquarters will enable Medsalv to collect single-use medical devices from hospitals in Australia and remanufacture them for safe use in a process that involves cleaning, testing, inspecting, packaging and relabelling of products to prevent them from going into landfill.

Around 50 jobs will be created over five years, including opportunities for disadvantaged groups.

By securing Medsalv's advanced manufacturing presence in Victoria, the state is poised to reap the benefits of exports to potential markets in Fiji, Singapore, Brazil, the UK and Europe.

Victoria is the leading Australian investment destination for advanced manufacturing projects, attracting \$588 million in foreign direct investment last financial year that created more than 2,500 new jobs.



## Teenage band rocks Winchelsea Bowls Club

### Julie Johnston

The Bowls Club rooms were full on Friday 8 December when Division 1 player Max Heaton-Harris (saxophone) played with his band The Eliminations. Members of the group are between 14-16 years of age. Charlie Gaylord portrayed Elvis incredibly well - and the repertoire even had a few Christmas songs in it.

It was a fun event and lots of groups were also playing on the green and sitting outside.



# SOUTHERN GRAIN STORAGE PTY. LTD.

AG SUPPLIES FERTILISER GRAIN STORAGE SEED CLEANING

**(03) 5267 2351**



5234 6585 0417 385 984

For all your domestic & stock water.

Also available for road and civil construction  
Local owned and operated.

# MRP Steelworx

Matthew Partridge  
p 0418 672 334  
e mrpsteelworx@yahoo.com.au

### Welding Service

- Onsite welding
- Farm maintenance
- Farm machinery & equipment repairs
- Cattle & sheep yards
- Custom built trailers
- Supply & install gates

## Antique Repairs

By **Doug Burns** est. 1976

- All Furniture
- French polishing
- Carving
- Veneering
- Wood Turning
- Porcelain



*Unusual Requests Welcome*

180 Barwon Terrace, Winchelsea

**0428 672 704**



Winchelsea Supermarket

Trading Hours

Monday to Saturday

8.30am to 7.30pm

Sunday

10am to 7pm

Ph: 5267 2676

29 Main St, Winchelsea



# Meet your Winchelsea Neighbours

Judy Cameron



We are Kim and Ray Jansen.

## **Do you have a family?**

We have a son, Cory and his wife Yuchun and three grandchildren - Jack, Billy and Sophie. We also have a daughter Stephanie. (who has a fur - baby)

## **How long have we been in Winchelsea?...**

Well Kim was born here, shifted many times all over the world with her parents, before settling back in WINCHELSEA...

## **Why do you like it here?**

Never to move again! We have lived here all of our married life of 41 years. The friendliness and quietness is what we like about here.

## **What are your interests?**

We do like travelling as well though and often holiday in Australia and overseas.

We previously were volunteer directors for 16 years of Geelong Pathfinders, an outdoor youth group for 10 to 16 year olds, somewhat similar to scouts.

Kim also has been a volunteer embroidery teacher for over three decades which she enjoys greatly. Ray is a dab handyman who can turn his hand to almost anything and enjoys building, woodworking or any kind of repairing.

We also enjoy working together on our picture framing. We feel very blessed enjoying creative pursuits together.

## Australian bass and estuary perch stocked into 32 lakes and rivers for recreational fishers to enjoy this summer

### **Victorian State Government**

Anglers across Victoria are set for more fishing luck this summer, with more than 720,000 Australian bass and estuary perch stocked into 32 lakes and rivers for recreational fishers to enjoy.

Minister for Outdoor Recreation Steve Dimopoulos announced the super stocking of these native species as part of the Government's stocking of 10 million fish this year and bolstering of native fish populations in waters across the state.

This has been made possible by the reinvestment of fishing license fees and the Government's \$96 million investment to support fishing and boating in Victoria over the next four years.

Australian bass and estuary perch live in coastal flowing catchments and are highly prized by recreational anglers as iconic native sportfish capable of living for over 40 years.

Both species are stocked annually by the Victorian Fisheries Authority (VFA), which has released around five million bass and perch over the last decade. Lots of these fish have reached catchable size and are now delivering outstanding fishing for Victorian anglers who, for bass, previously had to travel interstate for great lake fishing.

Waters that share in the 460,000 bass recently stocked include lakes Glenmaggie, which now enjoys 50,000 newly stocked fish, while 52,000 fish were stocked at Blue Rock.

Traralgon Creek now enjoys 10,000 extra bass and rivers such as the Mitchell have been stocked with 100,000 fish for recreational fishers to enjoy.

The population of bass have been boosted in the Snowy, Cann, Timbarra, Macalister, Latrobe, Avon, Tambo and Thomson rivers. In Victoria's south-west, Bullen Merri and Elingamite lakes both now enjoy 10,000 bass each.

Anglers are also set to snag one of more than 260,000 estuary perch that have been stocked in waters across Victoria. Gippsland Lakes has been stocked with a super 98,000 perch, while Lake Tyers, Genoa River, Bemm, Snowy and Little rivers now all have 10,000 perch each.

Lakers Cutting near Point Lonsdale has been boosted by 15,000 estuary perch and fishers at the Barwon can catch one of the 45,000 stocked fish, while 20,000 perch are stocked at Werribee. Upper Stony Creek Reservoir has been stocked with 24,000 estuary perch and Devilbend Reservoir on the Mornington Peninsula, which now has 9,000 fingerlings.

To see the full list of all 32 stocked waterways, visit [vfa.vic.gov.au/bassandperch2023](http://vfa.vic.gov.au/bassandperch2023).

# WURDALE FIRE BRIGADE

*The Wurdale Fire Brigade  
would like to wish everyone  
a Very Merry Xmas.*

The Brigade is keen to recruit new members, so if you are interested and live in the area please make yourself known to the members who meet at the Wurdale Fire Station at 10am every Sunday morning.



*A big thanks to everyone  
over the last 12 months.  
Season's Greetings to all.*

Cheryl Mawson



## Mens Shed rescues the kindergarten boat

Ray King

Our local Kindergarten had a rotted-out timber boat the children could no longer play in, The Men's Shed got involved - and the result put a smile back on their faces

## New granny flat reforms

### Victorian State Government

As part of the Victorian's Government's Housing Statement reforms, it is now easier to build a small second home on the same property through changes to the planning and building systems.

A small second home up to 60 square metres can now be built through a quick and easy process without a planning permit if they are on properties 300 square metres or larger.

Too often, families want to keep their older and younger generations closer together – but are priced out of established areas around the state. This change will make it easier for families to build a small second home on their own lot – near jobs, public transport, education and healthcare services, as well as existing social connections.

Analysis by the Department of Transport and Planning found there are around 700,000 lots of 300 square metres or larger eligible to have a small second home in residential zones across the state, and roughly 2,450 in rural zones – all of which have no overlays.

A standard building permit is still required, and siting, design and amenity requirements must be met, but there are no restrictions on how a small second home can be used.

Comprehensive information for applicants and practitioners is available at [planning.vic.gov.au](http://planning.vic.gov.au) and on the Victorian Building Authority website [vba.vic.gov.au](http://vba.vic.gov.au).

## The biggest ever road project

### Victorian State Government

The Government is delivering Victoria's biggest ever road project with the first contracts now signed.

Anyone who drives between the northern and eastern suburbs knows that the missing link between the Ring Road and the Eastern Freeway is Melbourne's most urgently needed project. The North East Link will take 15,000 trucks a day off local roads, save 35 minutes in travel time from the east to the outer north, and create 12,000 jobs.


The Eastern Freeway hasn't had a major upgrade in decades. This upgrade includes more than 45 kilometres of new lanes and new traffic management systems to deliver 11-minute travel time savings between Springvale Rd and Hoddle St, 10 kilometres of walking and cycling paths and a rebuilt Koonung Creek Reserve.

In the north, a major upgrade will finally complete the M80 Ring Road at Greensborough.

Work is also continuing on the North East Link Tunnels, with tunnelling beginning on the 6.5 kilometre stretch next year.

The awarding of key contracts followed an extensive competitive process. Nexus has been appointed to deliver the first part of the \$5.7 billion overhaul of the Eastern Freeway from Burke to Tram Road. AMA will deliver the \$3.8 billion M80 Ring Road Upgrade.

The North East Link tunnels, Eastern Freeway Upgrade and M80 Ring Road Update are expected to open in 2028 and are jointly funded by the Federal and Victorian governments.

A man with a beard is sitting in the driver's seat of a car at night. He is holding a yellow breathalyzer device in his mouth and blowing into it. The device has a red light on it. The background is dark, suggesting it's nighttime.

# Stop kidding yourself. If you drink, don't drive.

Thinking about driving after a couple of drinks? Think again.  
If you blow .05 or over, you could face serious penalties,  
including fines, losing your licence, getting an interlock installed  
in your car and having to blow zero for three years.

**TAC**

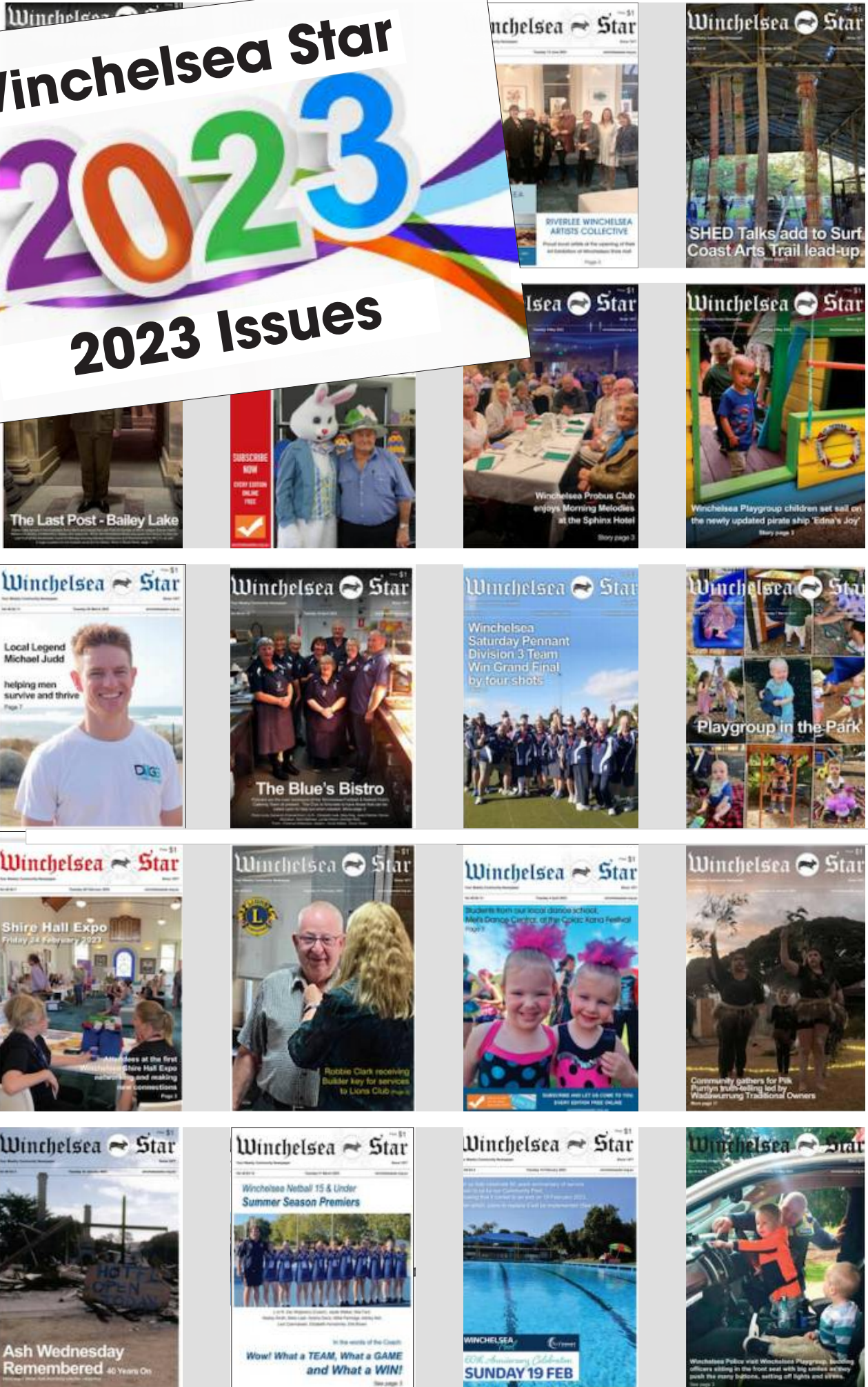
**VICTORIA**  
State  
Government



# Winchelsea Star

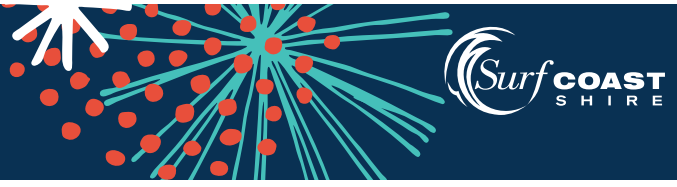
# 2023

## 2023 Issues





# Changes to bin collections this Christmas



Our collection truck drivers will have the day off on Christmas Day (Monday 25 December). As they work to catch up, this means **ALL residential bins across Surf Coast will be emptied on the day following your usual collection day.**

So during the week of Christmas only:

- ❖ bins normally emptied on Monday will be emptied on Tuesday
- ❖ bins normally emptied on Tuesday will be emptied on Wednesday
- ❖ bins normally emptied on Wednesday will be emptied on Thursday
- ❖ bins normally emptied on Thursday will be emptied on Friday
- ❖ bins normally emptied on Friday will be emptied on Saturday.

Collections will return to the normal schedule from Monday, 1 January 2024.

## Extra collections

All residential properties that receive a kerbside bin service will also receive an **extra landfill** and **extra recycling bin** collection during the festive season.

**To check how the bin collection changes affect you, and to see when your extra collections will be:**

- ❖ Download **SCRRApp** (the Surf Coast Rubbish & Recycling App) at [surfcoast.vic.gov.au/SCRRApp](http://surfcoast.vic.gov.au/SCRRApp)  
It's free and provides bin night reminders, an A-Z recycling guide, and notifications about unexpected changes to collections e.g truck breakdowns
- ❖ Download and print a PDF calendar at [surfcoast.vic.gov.au/calendars](http://surfcoast.vic.gov.au/calendars)
- ❖ Visit [surfcoast.vic.gov.au/mybin](http://surfcoast.vic.gov.au/mybin) and enter your address



Confused on bin night?

SCRRApp's got you sorted.

[surfcoast.vic.gov.au/SCRRApp](http://surfcoast.vic.gov.au/SCRRApp)



## Surf Coast Accessible Beaches



The beach is for everyone

Beach wheelchairs, matting and mobile hoists are available along the Surf Coast. These resources are managed by local Surf Life Saving Clubs, Great Ocean Road Coast and Parks Authority (GORCAPA), and the YMCA, enabling more people to enjoy our beautiful beaches.

### ANGLESEA

- Riverside access matting
- Beach wheelchair (booking required)
- Changing Place (MLAK key required)
- Point Roadknight access via boat ramp (from January 2024)

### LORNE

- Beach access matting
- Beach wheelchair (booking required)
- Mobile hoist (booking required)

### JAN JUC

- Beach wheelchair (booking required)

### TORQUAY

- Beach access matting
- Beach wheelchair (booking required)
- Liberty Swing (booking required)

For more information and to book: [surfcoast.vic.gov.au/Community/Access-for-all/Accessible-beaches](http://surfcoast.vic.gov.au/Community/Access-for-all/Accessible-beaches)



## NOTICE OF APPLICATION FOR A PLANNING PERMIT



1 Merrijig Drive (PO Box 350) Torquay, 3228  
P. (03) 5261 0600 E. [planningapps@surfcoast.vic.gov.au](mailto:planningapps@surfcoast.vic.gov.au)

<b>The land affected by the application is located at:</b>	12 Barwon Terrace, WINCHELSEA
<b>The application is for a permit to:</b>	Buildings and works for the redevelopment of the Winchelsea swimming pool, including one lap pool, one leisure pool, one children's pool, pavilion and a plant room.
<b>The applicant for the permit is:</b>	Surf Coast Shire
<b>The application reference number is:</b>	<b>23/0437</b> Please quote this number when making enquiries

**You may look at the application and any documents that support the application at the office of the responsible authority:**

Surf Coast Shire, 1 Merrijig Drive, Torquay VIC 3228

This can be done during office hours, 8:30am – 5:00pm Monday to Friday, and is free of charge.

You can view the application online through Council's eplanning portal:

<https://eplanning.surfcoast.vic.gov.au/Account/Login.aspx>

Any person who may be affected by the granting of the permit may object or make other submissions to the responsible authority. An objection must be made to the responsible authority in writing, include the reasons for the objection and state how the objector would be affected.

The responsible authority must make a copy of every objection available at its office for any person to inspect during office hours free of charge until the end of the period during which an application may be made for review of a decision on the application. A copy of all objections is provided to the Permit Applicant. If you object, the Responsible Authority will tell you its decision.

The Responsible Authority will not decide on the application before: **12 January 2024** (or until a minimum of 14 days after the last notice is given)





# WINCHELSEA FACEBOOK

## Non-profit community Groups and Pages

What's on in Winchelsea	<a href="https://facebook.com/WhatsoninWinchelsea">facebook.com/WhatsoninWinchelsea</a>
Winchelsea FREE	<a href="https://facebook.com/groups/winchelseafree">facebook.com/groups/winchelseafree</a>
Winchelsea Community Information	<a href="https://facebook.com/groups/207538644446972">facebook.com/groups/207538644446972</a>
Winchelsea Classifieds 3241	<a href="https://facebook.com/groups/216942861684082">facebook.com/groups/216942861684082</a>
Winchelsea Lost and Found	<a href="https://facebook.com/groups/768187693217518">facebook.com/groups/768187693217518</a>
Winchelsea Op Shop	<a href="https://facebook.com/HospitalAuxiliaryOpShopWinchelsea">facebook.com/HospitalAuxiliaryOpShopWinchelsea</a>
Winchelsea Shire Hall	<a href="https://facebook.com/WinchelseaShireHall">facebook.com/WinchelseaShireHall</a>
Winchelsea Community House	<a href="https://facebook.com/winchelseacommunityhouse">facebook.com/winchelseacommunityhouse</a>
Winchelsea Coronavirus Community Support Group	<a href="https://facebook.com/groups/2676957719207927/">facebook.com/groups/2676957719207927/</a>
The Green Winchelsea Residents	<a href="https://facebook.com/groups/515322772623126">facebook.com/groups/515322772623126</a>
Growing Winchelsea Inc	<a href="https://facebook.com/growingwinch">facebook.com/growingwinch</a>
Winchelsea Star	<a href="https://facebook.com/TheWinchelseaStar">facebook.com/TheWinchelseaStar</a>
Winchelsea Movie Club	<a href="https://facebook.com/winchelseamovies">facebook.com/winchelseamovies</a>
Winchelsea Community Market	<a href="https://facebook.com/100083362387611">facebook.com/100083362387611</a>
Winchelsea Land and River Care Group	<a href="https://facebook.com/envirowinchelsea/">facebook.com/envirowinchelsea/</a>
Upper Barwon Landcare Network	<a href="https://facebook.com/UpperBarwonLandcare">facebook.com/UpperBarwonLandcare</a>
Winchelsea & District Historical Society Inc	<a href="https://facebook.com/Winchelseaanddistricthistoricalsociety/">facebook.com/Winchelseaanddistricthistoricalsociety/</a>
Winchelsea Wildlife Shelter	<a href="https://www.winchelseawildlifeshelter.com/">www.winchelseawildlifeshelter.com/</a>
SCARS - Surf Coast Animal Rescue Service	<a href="https://facebook.com/groups/415211698950674">facebook.com/groups/415211698950674</a>
Winchelsea Gardeners	<a href="https://facebook.com/groups/779878518703025">facebook.com/groups/779878518703025</a>
Winchelsea & District Historical Society	<a href="https://facebook.com/Winchelseaanddistricthistoricalsociety/">facebook.com/Winchelseaanddistricthistoricalsociety/</a>
Winchelsea Repertory Society Inc	<a href="https://facebook.com/winchrep/">facebook.com/winchrep/</a>
Winchelsea Globe Theatre	<a href="https://facebook.com/Winchelsea-Globe-Theatre-164790897641678">facebook.com/Winchelsea-Globe-Theatre-164790897641678</a>
Winchelsea Uniting Church	<a href="https://facebook.com/winchelseaunitingchurch">facebook.com/winchelseaunitingchurch</a>
St Thomas' Anglican Church	<a href="https://facebook.com/StThomasWinchelsea">facebook.com/StThomasWinchelsea</a>
St John the Baptist Catholic Church	<a href="https://facebook.com/pages/Winchelsea-Catholic-Church/101775670163180">facebook.com/pages/Winchelsea-Catholic-Church/101775670163180</a>
Winchelsea Mainly Music	<a href="https://facebook.com/groups/668500343953191/">facebook.com/groups/668500343953191/</a>
Winchelsea Health Club	<a href="https://facebook.com/WinchelseaHealthClub">facebook.com/WinchelseaHealthClub</a>
Winchelsea Playgroup 2019	<a href="https://facebook.com/groups/551663435367031">facebook.com/groups/551663435367031</a>
Winchelsea Girl Guides	<a href="https://www.guidesvic.org.au/">www.guidesvic.org.au/</a>
Winchelsea/Modewarre Scouts	<a href="https://facebook.com/1stModewarreScouts">facebook.com/1stModewarreScouts</a>
Winchelsea Fire Brigade	<a href="https://facebook.com/winchelseafirebrigade/">facebook.com/winchelseafirebrigade/</a>
Winchelsea SES	<a href="https://facebook.com/groups/WinchSES">facebook.com/groups/WinchSES</a>
Country Women's Association - CWA Winchelsea Branch	<a href="https://facebook.com/pg/CWAWinchelsea/">facebook.com/pg/CWAWinchelsea/</a>
Winchelsea Bowls Club	<a href="https://facebook.com/Winchelsea-Bowls-Club-533783333344345/">facebook.com/Winchelsea-Bowls-Club-533783333344345/</a>
Winchelsea Blues Cricket Club	<a href="https://facebook.com/groups/8999049476/">facebook.com/groups/8999049476/</a>
Winchelsea Blues FC	<a href="https://facebook.com/WinchelseaFNC/">facebook.com/WinchelseaFNC/</a>
WYLD Winchelsea Youth Leisure and Drop in	<a href="https://facebook.com/groups/569737570027065/">facebook.com/groups/569737570027065/</a>
Lions Club of Winchelsea	<a href="https://facebook.com/LionsWinchelsea">facebook.com/LionsWinchelsea</a>
Winchelsea Probus	<a href="https://facebook.com/893535194971083">facebook.com/893535194971083</a>
Winchelsea Golf Club	<a href="https://facebook.com/winchelseagc/">facebook.com/winchelseagc/</a> <a href="https://facebook.com/groups/1324943804676697">facebook.com/groups/1324943804676697</a>

# 2023 VCE graduates have done themselves proud

## Victorian State Government

The wait is over for thousands of students who have completed their Victorian Certificate of Education (VCE). This year 51,214 students are graduating with their VCE. More than 21,000 graduates have received study scores of 40 or higher, more than 650 have received the maximum study score of 50, and a further 3,048 have been awarded the VCE Baccalaureate.

Joining these students are 6,387 VCE Vocational Major graduates – the first group to have the benefit of the greater range of options now available in the VCE. The VCE Vocational Major gives students practical experience in one or more industries through VET studies and replaces the Victorian Certificate of Applied Learning (VCAL).

The overall VCE completion rate in Victoria was 97.4 per cent. Year 12 students across the state will now make the choice to go to university, TAFE, start an apprenticeship or traineeship, start working or take some time off.

**Students with questions about their results can call the Post Results and ATAR Service on 9637 3877 or 1800 653 080.**

# Tickets are now available for Golden Plains Sweet Sixteen festival

*Every ticket helps local organisations do great things in the district. We are grateful to the wonderful people of the region, who so graciously help host us all.*

This will be a panoramic long weekend at the Meredith Supernatural Amphitheatre, in glorious Autumn.

**Jeff Mills presents Tomorrow Comes The Harvest Sneaks**

**The Slingers**

**Sunshine and Disco Faith Choir**

**Kia**

**Vv Pete**

**Ben Fester**

We guarantee that we will continue to listen, fix things if they don't work, not fix them if they do, and Keep On Making Golden Plains Golden.

We remain open to ideas: big, small and fast-medium. Talk to me (mailto:auntym@mmf.com.au) any time.

There's only one type of ticket, which includes camping, parking and BYO. Everyone reclines Gold Class.

Go to goldenplains.com.au for details.

**All About Mowers & Chainsaws**  
Repairs to all makes and models of ride on mowers, domestic mowers, pumps, chainsaws, brushcutters and small engines.  
Trading Hours: Mon - Fri 8am - 5pm Saturday 8am - 12 noon  
**5267 2266** Cnr Princes Hwy & Lennox St Winchelsea  
www.allaboutmowers.com.au  
accounts@allaboutmowers.com.au

PERKINS EDX STIHL VICTA

52672192 **R & K Creative Framing**  
for all your framing needs  
free quotes pension discount specialist in Age & Disability Modifications  
Ray & Kim Jansen  
10 Witcombe st  
Winchelsea 3241  
Ray The Home Maintenance **HANDYMAN**  
abn 47928623462  
0414672192

**GUIM DESIGNS**  
CARPENTRY



- DECKS - SAUNAS
- FLOORING - PERGOLAS
- WEATHERBOARDS
- HORSE SHEDS
- CLADDING - FENCES

ALL THINGS TIMBER AND MORE...  
INSTAGRAM guim\_designs  
CALL PAT ON  
**0401 232 674**



## Barwon Water and genU partnership leads to local art purchase

### Barwon Water

Barwon Water has purchased an artwork of Black Rock Water Reclamation Plant by local artist Aaron Deans.

The Black Rock site where Barwon Water transforms the region's sewage into recycled water and biosolids, proved to be inspiring subject matter for Aaron.

The detailed, free-hand work in pencil and fine liner reflects his interest in architecture, processes, engines, and pipes. The result is a striking interpretation of the complex processes that take place at the site.

Aaron's creative talents have been nurtured at genU, a disability services provider that among many other services, supports artists with disability, promotes their works and advocates for their inclusion in contemporary art practice.

Aaron's art teacher Gosia Reflinski was very impressed with the composition and level of detail of the work. "This is the first time Aaron has tackled the complex issue of perspective in his art (three-dimensional representation of objects or spaces in a two-dimensional artwork)."

genU's chief executive officer Clare Amies said she was pleased to see the Aaron going places with his art. "As part of the many disability support services we offer there are a wide range of art programs designed to help artists embrace their creativity and express themselves in an inclusive environment. It's fantastic to see our art program having a positive impact for Aaron."



Laura Kendall and Aaron Deans with the artwork

Aaron thanked the staff who had shown him around the Black Rock Water Reclamation Plant, via a handmade card. "Thank you for giving me the opportunity to see your facility, for your time and your professional kindness."

Free guided tours are available at the Black Water Rock Reclamation Plant for not-for-profit community groups, and Barwon Water has guest speakers available to speak about delivering a safe, secure and sustainable water future.

Bookings are essential. Contact Emma Homes, Community Education Officer on 1300 656 007 or email [Education@barwonwater.vic.gov.au](mailto:Education@barwonwater.vic.gov.au).

## Winchelsea gets new netball courts

Council endorsed funding for the reconstruction of three netball courts in Lorne and Winchelsea during its December Council meeting.

A total of \$405,000 has been transferred from the Asset Renewal Reserve to the Netball Court Renewal Budget increasing the available funds from \$500,000 to \$905,000.

The increase allows all three courts, two in Winchelsea (Eastern Reserve) and one in Lorne (Stribling Reserve) to be renewed.

The current asphalt courts have cracked, and the playing surfaces deteriorated due to seasonal ground movement.

Lorne Ward Councillor Gary Allen said the new courts will be made in a more robust pavement suited to the environment. "Sport is such an essential part of building and fostering healthy, active communities. The new surfaces will be more durable and adaptive to the weather," Cr Allen said.

"Reconstructing the courts in Winchelsea and Lorne is a great way Council can provide support to two fantastic clubs.

"We're increasing the safety of community members by providing and maintaining a better playing surface."

The project budget includes an allowance for external construction supervision and advice from a Netball Victoria consultant.

## Victorian brain injury technology creates jobs and benefits patients world-wide

### Victorian State Government

Critical investment is accelerating the commercialisation of world-first Victorian technology to treat brain injuries, creating jobs at home and potentially benefiting patients around the globe.

Minister for Economic Growth Tim Pallas has announced a \$2 million investment to support medtech company Cyban's drive to win US Food and Drug Administration approval for its patented Brain Pulse Monitor.

Founder Dr Barry Dixon is an intensive care specialist and his experience has been crucial in development of the monitor, which uses sensors placed on the patient's head. The technology enables brain oxygen monitoring without the need for surgery to insert probes, reducing the risk of further injury to the patient.

There are 27 million cases of traumatic brain injuries around the world every year. The device aims to enable early detection of brain hypoxia to improve mortality rates and minimise damage such as long-term disabilities.

Traumatic brain injury is the second most costly health condition globally behind cardiovascular disease and reducing the need for surgery, as well as accelerating time to treatment and shortening hospital stays, will cut costs for hospitals while improving patient outcomes.

# The Blue Tree Project is coming to Winchelsea

## Sukoon Bedi

You may have noticed a blue tree in your travels? The blue tree project is coming to Winchelsea!

With the support of St Johns Catholic Church, the community has a tree almost ready for painting. We are planning a Community event and encourage everyone to come along and support the cause. BYO paint brush!

## Behind each blue tree lies a story

Blue Tree Project was founded with a mission to help spark difficult conversations and encourage people to speak up when experiencing mental health concerns. We believe help is never as far away as it feels.

Blue trees dotted across every continent of the world (minus Antarctica) are both beacons of hope, and conversation starters.

Something that began out of tragedy now offers a positive way for people to connect and help change the way we talk about mental health.



## Genetics Australia takes on Auzred portfolio

### Genetics Australia

The future of a local Australian Red breeding program has been secured with Genetics Australia (GA) taking on marketing and distribution of the Auzred XB genetics portfolio.

From January 1, 2024, GA will assume ownership and management of the Auzred XB Semen portfolio which is made up of six main active sires.

Auzred XB is the biggest Australian Red breeding program in

Australia outside of GA's existing program. The portfolio will be merged with the GA Australian Red genetics program.

GA CEO Anthony Shelly said the acquisition was a strategic decision to grow the Australian Red breed. It also ensures that Genetics Australia is the largest and most complete supplier of Australian Reds to farmers."

Co-owners of Auzred XB, Karen Moroney and Steve Snowdon, said they were excited to complete the transaction. They had both wanted to slow down and were keen for the portfolio to go to Australia's biggest genetics company. "We've got a really good team of Australian Red bulls and having Genetics Australia's presence in the market will do more justice to them than we could."

Mr Snowdon said "I think the Australian Red dairy breed has a really strong future," he said. "It's the number three breed in Australia and numbers are slowly increasing, with people often using them in cross-breeding.

Two of the active sires, REDROLLO and GEORGE2 are starting to add their first milking daughters.

Ms Moroney, whose father Bill Thompson introduced Red genetics in Australia, said she was excited about the future of the breed because GA had the resources to help it grow.

Mr Shelly said Genetics Australia had shown a long-term commitment to develop the Australian Red breed and securing the AUZRED team would further strengthen GA's position, allowing continued investment in the breed for local growth and to pursue export opportunities.

Auzred XB distributed Montbeliarde semen sourced from Coopex and GA will also take over this distributorship.



# CWA Winchelsea Branch

PWe meet on the 2nd Wednesday of the month at 7pm in the Senior Citizens Hall  
Web: <https://www.facebook.com/CWAWinchelsea/> Email: [winchelsea.cwa@gmail.com](mailto:winchelsea.cwa@gmail.com)

## CWA Christmas Cake

### INGREDIENTS

- 225g unsalted butter, room temp, chopped
- 1 cup (250g) firmly packed dark brown sugar
- 1 1/2 cups (240g) sultanas
- 1 1/2 cups (255g) raisins
- 1 cup (190g) chopped dried figs
- 1 cup (250g) chopped red glacé cherries
- 1/2 cup (85g) mixed peel
- 3/4 cup (120g) whole blanched almonds, plus 1/3 cup (55g) extra, to decorate
- 1 1/4 cups (310ml) brandy, plus 1/4 cup to brush
- 3 tsp mixed spice
- 1/2 tsp each ground cinnamon, ground ginger
- 1/4 tsp freshly grated nutmeg
- 170g each self-raising flour and plain flour
- 1 tsp bicarb soda
- 4 large eggs, at room temperature
- Marmalade, warmed, to brush (optional)

### METHOD

1. Preheat oven to 180°C/160°C fan-forced. Grease base and side of a 22cm x 8cm deep round cake pan and line with baking paper, extending paper 3cm above edge of pan.
2. Place butter, sugar, dried fruit, nuts, brandy and spices in a large saucepan over medium heat. Bring slowly to a simmer, stirring constantly until sugar dissolves, then simmer for 3 minutes, stirring occasionally. Transfer mixture to a large heatproof bowl and set aside at room temperature for 30 minutes to cool.
3. Meanwhile, sift flours, bicarb and a pinch of fine salt into a large bowl. Whisk eggs in a medium jug until well combined. Add fruit mixture to the flour mixture and mix until almost combined then add the egg and stir until well combined.
4. Spoon batter into prepared pan and level surface with a spatula. Use the extra whole blanched almonds to decorate top, lightly pressing into surface of batter.
5. Bake for 65 minutes or until cooked when a skewer inserted in centre comes out with a few crumbs. While the cake is still warm, brush the extra brandy evenly over the warm cake, making sure it reaches the edges (this helps to preserve the cake). Set pan on a wire rack and allow the cake to cool completely in pan, then brush top with warmed marmalade, if desired, to glaze.
6. When ready to serve, you can wrap cake with a festive ribbon and glaze top with more warmed marmalade, if desired.



## Winchelsea Bowls Club

Ph 5267 2241

[Facebook.com/Winchelsea-Bowls-Club-533783333344345/](https://www.facebook.com/Winchelsea-Bowls-Club-533783333344345/)



## WINCHELSEA GOLF CLUB

Ph 5267 2660

### Results: Mens-Mid Week 13/12/23

- 1st - Neil Hickman (13) 37 pts
- 2nd - Bernie Perry (16) 35 pts
- NTP - Stephen Cole
- FISH - Neil Hickman

Great little country 9 hole golf course run by an enthusiastic team of volunteers.





# Climate Report

Judy Cameron

Some good news.

With more frequent and extreme weather events, melting glaciers, and rising sea levels, there is no question that the climate crisis is here now and the impacts are felt by humans and nature alike. But there is good news: every day we see more individuals, organizations, businesses, and governments responding to the crisis. People are coming together to take concrete steps to mitigate the worst impacts of climate change.

Consider a New Year Resolution to make a change!

## 1. Switch to a green bank

If you'd like to make a change to a bank that is investing in the future of our planet rather than its destruction, here are the banks that are not investing in fossil fuels.

Which Banks are NOT investing in fossil fuels?

- Bendigo Bank has no lending directly to fossil fuel or native forest logging projects. Bendigo have a lower rate 'Green Personal Loans' for new and used electric vehicles, solar panels, solar hot water, grey water treatment systems, double glazing, energy efficient white goods, solar batteries and more
- Teachers Mutual Bank. "We don't directly invest in or lend money to industries that pollute the planet". They also offer loans with reduced rates for buying environmentally friendly products.
- Suncorp Bank: Suncorp had initially invested \$1,049m in fossil fuels but have since withdrawn from the sector.

Here is a list of all of the banks that are funding fossil fuels:

AMP; ANZ; Bank of China; Bank of Queensland (also own ME Bank); Citi; Commonwealth Bank (also own Bank West); HSBC; ING; Macquarie; National Australia Bank (also own 86 400; UBank); Westpac (also own Bank of Melbourne; Bank SA; RAMS; St George)

## 2. Change your diet

Research suggests that cutting back on meat and dairy is the single biggest thing people can do to reduce their impact on Earth.

## 3. Join an environmental group

As the saying goes, there is strength in numbers. Consider joining a campaign group to add weight to ongoing efforts to lobby policy makers to slash emissions.

## 4. Go with a green energy provider

Switching to a green energy provider is another simple but effective way of reducing your carbon footprint.

- Diamond Energy owns over 1,000 rooftop solar installations. First retailer to offer an export tariff for home batteries.
- Momentum Energy owned by Hydro Tasmania though also own two large gas power stations.
- Energy Locals mostly owned by a renewable energy investment fund.
- CoPower partners with Energy Locals. A member co-op managed not-for-profit.
- Powershop, a major renewable electricity generator, recently acquired by global fossil fuel giant Shell.

Australia's largest energy retailers – Origin Energy, Energy Australia and AGL – hold a combined market share of around 70%. They're labelled 'the dirty three' because they each have investments in coal generation and coal seam gas projects, consequently making them some of Australia's biggest polluters.

## 5. Use energy wisely

Using energy wisely is another way to cut your carbon footprint. Using appliances off-peak when demand is low, or during the brightest part of the day, to utilise solar, can help. Other ways to conserve energy include switching televisions off overnight and turning the heating off when out of the house. Having a smart meter installed can help you keep tabs on energy consumption

## 6. Embrace active travel

Substantially reducing car use – especially for short journeys – would have a dramatic impact. Embracing walking and cycling is good for your health, as well as the planet.

## 7. Shun the skies

Aviation is one of the greatest obstacles in the race to net zero. It's one of the world's fastest growing sources of emissions. What's more, the sector is one of the hardest to decarbonise. Until battery and hydrogen planes bring us the possibility of guilt-free air travel, consider flying less – or not at all.

## 8. Find out what's going right

Amid all the gloom, there are reasons to be sanguine. Renewable energy records are being broken everywhere you look and sustainable innovations are bringing myriad other benefits to society, including cleaner air, leafier cities and a lower living costs. Keeping abreast of the good things that are happening builds resilience, and allows people to stay positive and proactive.

9. **Buy local, seasonal and ideally organic**

You don't need a climate scientist to tell you that seasonal produce, grown locally, and to a high environmental standard is better for the planet than items shipped halfway around the world from companies with murky supply chains.

10. **Grow your own**

Whether you have a windowsill or a smallholding, growing your own herbs, flowers or vegetables can be beneficial. Not just to pollinators, which feed off the plants, but to your mental health. Sure, cultivating a garden isn't going to absorb much carbon. But it will help you reconnect with nature, which research suggests is good for our mental health – particularly amid dire news about the climate.

11. **Buy second-hand**

Manufacturing products is often a carbon intensive process, and uses up precious natural resources. Happily, options abound when it comes to buying 'pre-loved' goods.

People are also cottoning on to the benefits of repairing and refurbishing faulty products, rather than buying new.

12. **Choose a sustainable superannuation fund**

"Investing in your pension more sustainably could be 27 times more powerful than going vegan and stopping flying combined," says Henna Shah from 'Make My Money Matter', a UK campaign group that highlights what people's pensions are funding. Speak to your employer or Super Fund and ask "I want an option where I'm not investing in bad things"

You need to do your own research to consider whether any investment option and risk profile is right for you.

13. **Switch insurers**

Insurers are the second biggest investors after pension funds, so choosing an ethical insurance company will ensure your money isn't propping up the fossil fuel sector. Here in Australia all three major insurers (IAG, Suncorp and QBE) continue to support fossil fuels in some way. Note IAG and Suncorp market themselves under various brands including:

- IAG: NRMA, RACV, CGU, SGIO
- Suncorp: AAMI, GIO, APIA, Just Car

For a full analysis of Australian insurers see: <https://www.marketforces.org.au/campaigns/insurance/>

14. **Vote for parties with strong environmental policies**

Elections don't come around often. But when they do, spend some time going through the manifestos of the parties that are standing. Vote for the party or candidate that you think has the most credible policy roadmap to net zero.

Sources: *Positive.News* ; *Market Forces*; *Greenpeace*

# Letter to the Editor

**Alan Barron**

Future generations will condemn this generation for its climate haste.

This generation has been swept along by the perceived climate crisis and the urgent need to address it.

However, anyone with a modicum of understanding of physics knows that four atoms in 100,000 (CO<sub>2</sub>) can't control anything. Carbon dioxide a minor trace gas, and is incapable of being the major driver of climate.

The western world is in a mad rush to replace a reliable, safe, efficient and cost effective fossil fuel base-load power system with a vastly inferior renewables power system which only generates intermittent power, even with battery storage.

For a quarter of the money that has been squandered on 'green energy' - which only lasts at a maximum of 30 percent of the productive life of any fossil fuel power facility, we could have built new fossil fuel power stations which could go on supplying reliable base-load power for the next 55 years.

Have those pushing for the transition to renewable energy done their cost benefit analysis?

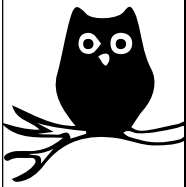
Lord Ridley has estimated that just for renewables to meet the projected increase for power generation would require the building of 350,000 wind turbines and the installation of 93 million solar panels - per year, over the next 50 years to meet Net Zero targets.

This would also involve building tens of thousands of new power lines and the loss of vast areas of arable land which is currently being used to grow food.

The land required to build these renewable energy turbines and solar panels would take up the entire land area of Russia.

Climate change is the greatest moral issue of this century - but not for the reason people think. In years to come this generation will be condemned for getting the science wrong and the failure to fully evaluate the negative impact of Net Zero policies on wider society.

It's time to return commonsense and rationality to politics and allow genuine science to emerge triumphant over the dubious policies which have dominated modern decision making.



Café La Hoot

have you tried 'owl' coffee?

1 willis st cafelhoot@gmail.com 0407 528 999

### direct TEMPORARY FENCING

FOR HIRE - SUPPLIED & ERECTED - 7 DAYS  
GEELONG - BELLARINE - COLAC - SURF COAST  
PHONE CAM 0417 310 800

### CONCRETER

Alister Aitken

No job to big or small

- Driveways - Carports - Crossovers - Footpaths -
- Sheds Slabs - Colored Concrete - Concrete
- sealing - Exposed Aggregate - & more -

Call or text for a no obligation free quote

Servicing our local Winchelsea & Surrounding Areas

alaitken.aa@gmail.com or Alister - 0411 871 950

A.B.N 47 228 574 460

### NO MATTER WHAT YOUR PROBLEM, DODDS ELECTRIX CAN DEFUSE THE SITUATION.

RURAL, INDUSTRIAL, COMMERCIAL, DOMESTIC  
PHONE 0438 887 360  
EMAIL: DODDSY@FASTMAIL.FM  
PO BOX 36 BIRREGURRA, VICTORIA 324  
REC: 17520 ABN: 64 581 250 880

### DownRyte Excavations



- Excavations
- Drilling and Piling
- Rock Placement
- Tree and Stump Removal

Sean Hunwick

Mobile: 0409 447 288  
Email: downryte@activ8.net.au



5234 6585 0417 385 984  
For all your septic tank, grease traps and interceptor pits servicing.  
Locally owned and operated

### Kyeema Rural Fencing Pty. Ltd.

Jason Armstrong & Jay Hawker

1080 Prices Lane, Ombersley, Victoria 3241

0419 565085 (Jason)

0416 585817 (Jay)

kyeemafarm@kyeemafarm.com.au

Also incorporating domestic and rural tree trimming services.



### Dance ENROLMENTS NOW OPEN!

Winchelsea Dance Classes

REGISTER NOW

- JAZZ - THEATRICAL TAP - HIP-HOP
- CLASSICAL BALLET - CONTEMPORARY
- Pre-School - Adults
- Beginner - Advanced Levels

www.melsdancecentral.com.au



### mainly music

est. 1990

Fun, Interactive music sessions for pre-school children (0-4 y.o.) and parents/caregivers

When: Mondays from 10 to 11 am (runs during school terms)

Where: St Thomas' Hall  
25 Barwon Tce.

To Enquire ring: 0407838256

# Changes to residential bin collections in Christmas week

## Surf Coast Shire

Every Surf Coast Shire residence stands to be impacted by changes to kerbside bin collections during the week of Christmas this year.

Collection truck drivers will have Christmas Day (Monday) off, and during that week all residential bins will be emptied the day following usual collections.

This means from 26 to 30 December only:

- Bins normally emptied on Monday will be emptied on Tuesday
- Bins normally emptied on Tuesday will be emptied on Wednesday
- Bins normally emptied on Wednesday will be emptied on Thursday
- Bins normally emptied on Thursday will be emptied on Friday, and
- Bins normally emptied on Friday will be emptied on Saturday

The normal collection schedule will resume from Monday 1 January, 2024.

Cr Paul Barker encouraged people to familiarise themselves with the temporarily revised schedule. "It is important for residents and visitors to note that the changes will affect collections for the entire week, and not just the Monday."

"We encourage people to download the free Surf Coast Rubbish and Recycling App SCRRApp to receive bin night reminders to help them put the right bins out on the correct night that week.

"All residential properties which receive a kerbside service will also receive one extra red lid landfill bin collection and one extra yellow lid bin recycling collection during the festive period."

People can check when their extra collections will be, and how collection changes will affect them, by:

- Downloading the SCRRApp at [surfcoast.vic.gov.au/SCRRApp](http://surfcoast.vic.gov.au/SCRRApp). SCRRApp provides bin night reminders, an A-Z waste and recycling guide and notifications about changes to collections, or extra collections.
- Download a PDF collection calendar at [surfcoast.vic.gov.au/calendars](http://surfcoast.vic.gov.au/calendars).
- Go to [surfcoast.vic.gov.au/mybin](http://surfcoast.vic.gov.au/mybin) and enter your address in the 'My Neighbourhood' field.

People are also encouraged to properly sort their household waste and recycling. Correct recycling and composting can reduce the amount of waste sent to landfill and maximise the capacity of red lid landfill bins.

SCRRApp features a handy A-Z guide to help residents and visitors to use their four bins correctly. People can also find information at [surfcoast.vic.gov.au/bins](http://surfcoast.vic.gov.au/bins).

# Council adopts Moriac Structure Plan 2023

## Surf Coast Shire

At Surf Coast Shire Council's December meeting Council adopted the Moriac Structure Plan 2023 to guide a range of decision making over the next ten years.

The plan provides an overarching vision, guiding principles, strategies, and actions for managing the use and development of land in the town of Moriac.

Councillor Heather Wellington said ensuring the future growth of the town is in line with landscape constraints and the town's rural character is essential.

"The plan will provide a strategic framework that will guide land use and development decisions. It is a way to ensure Moriac maintains its rural character," Cr Wellington said.

"We acknowledge the Moriac community has expressed a range of opinions about future growth. The role of Moriac as a location for limited rural residential development should be protected by planning policy. This was the majority view from our findings."

The draft Moriac Structure Plan was presented to Council on 23 May 2023, seeking Council's endorsement of the plan for community engagement purposes.

The draft plan was placed on public exhibition for a period of six weeks. The Plan received 35 submissions, with five of those submissions lodged by public authorities.

Following this process, the draft Moriac Structure Plan was reviewed to incorporate some of the changes identified through submissions to the Strategic Framework Plan, key strategic directions, and general commentary.

The Moriac Structure Plan 2023 will now be incorporated into the Surf Coast Planning Scheme through a planning scheme amendment process where submitters will get the opportunity to also provide submissions as part of this process.

Cr Wellington said the plan will become the primary local policy reference for land use planning decision making in Moriac.

"It has a strong focus on the protection and enhancement of landscapes. Not only that, central to a landscape first approach is the respectful consideration of Traditional Owner values," Cr Wellington said.

"The plan acknowledges the Wadawurrung Traditional Owners as the first custodians of the Moriac region. It also encourages the consideration of cultural knowledge in future decision making."

Bushfire risk at a landscape level, the impacts of climate change and opportunities related to integrated water cycle management are also covered.

"This has been an in-depth process that commenced late 2021. I'm happy for current and future residents of Moriac that their township will be guided and protected by the plan," Cr Wellington said.

Find out more at [surfcoast.vic.gov.au/About-us/Your-Say/Moriac-Structure-Plan](http://surfcoast.vic.gov.au/About-us/Your-Say/Moriac-Structure-Plan).

# SERVICES AND ACTIVITIES IN WINCHELSEA

## VLINE TRAIN SERVICES

### TO MELBOURNE:

Mon - Fri 6:41 am, 7:57am, 11:14am, 2:08pm, 7:23pm  
Sat - Sun 9:26am, 1:30pm, 7:18pm

### TO WARRNAMBOOL:

Mon - Fri 8:56am, 11:55am, 2:50pm, 5:27pm,  
6:45pm, 8:50pm  
Sat - Sun 8:47am, 2:46pm, 8:34pm



## COUNTRY WOMEN'S ASSOCIATION

7pm second Wednesday of month  
Winchelsea Senior Citizens' Hall



## WINCHELSEA SES

Every Wednesday  
Visitors and inquiries welcome  
0408 102 802



## WINCHELSEA AND DISTRICT COMBINED PROBUS CLUB

Meets 1st Monday of the month at 10am.  
Senior Citizens Rooms,  
Harding St, Winchelsea.  
New members always welcome.  
Enquiries Linda 0439 817 263.

## WINCHELSEA TRANSFER STATION

55 Cressy Road, Winchelsea

Monday	Closed	Tuesday	2pm-4pm
Wednesday	Closed	Thursday	2pm - 4pm
Friday	Closed	Saturday	1.30-3.30pm
Sunday	9.30-12.30pm		

Accepts household garbage, mixed commercial and industrial waste, mixed construction and demolition waste.  
Accepts recyclable materials.  
Accepts one recycle bin two waste bins.  
Does NOT accept clean fill.



## WINCHELSEA GIRL GUIDES

Our Unit meets at the Catholic Church Hall,  
Harding St Winchelsea each Monday 4.30pm-6pm  
All girls 5yrs- 15yrs Welcome!  
Contact Yvonne Orchard 0448 672 630  
or Bonnie Stokes 0401 386 274



## 1ST MODDA AND 1ST WINCHELSEA SCOUT GROUP

**Joys:** Tuesdays of school term 5-6pm  
**Cubs:** Mondays of school term 6:30-8pm  
**Scouts:** Tuesdays of school term 6:30-8:30pm  
All at Modewarre Hall, Cape Otway Rd  
**Venturers:** Wed at Walton's Rd Venturer Den  
Contact Marie McPadden 0409 330147



## BUS TO THE HUB

For reservations on the weekly bus to the Eastern Reserve Hub, please phone 52671202.

## SURF COAST MOBILE LIBRARY

Hesse St, Fridays, 2pm-5pm  
Surf Coast Mobile Library  
parked in Hesse Street (outside Shire Hall)  
Fridays between 2:00 and 5:00pm  
unless it is a Public Holiday.

## WINCHELSEA TAXI

0429 672 888 or 5267 2888  
Wheelchair accessible  
10 seater bus available.

## WINCHELSEA PLAYGROUP

Every second Thursday 10am-12pm  
St Thomas Anglican Church Hall  
cnr Barwon Tce and Hopkins St, Winchelsea  
Contact: Melissa 0456181268  
Facebook - Winchelsea Playgroup 2019  
**New families welcome**





# TINY HOUSES ON WHEELS PILOT

# APPLY NOW



Applications are open for the **Tiny Houses on Wheels Pilot**, which will enable Council to assess the impacts of THOWs and monitor and evaluate the contribution they could make to housing across the shire.

### What's required?

- The tiny houses are to be on a wheeled trailer base and placed on privately-owned land, subject to an agreement with the host.
- An assessment criteria to be met, which includes legal compliance, environmental impacts, amenity, access, waste management, connection to services and utilities, and safety.
- If successful, applicants will be granted a Temporary Residence permit under the Community Amenity Local Law 2021.

*"We're among the first Councils in Australia to endorse a tiny houses pilot. We're proud to be proactive in this space to potentially pave the way for more people to join our community and to provide key workers with an accommodation solution. It's also a sustainable housing option."*

- Mayor Cr Liz Pattison

The pilot will run until **December 2026**. To learn more and to apply email [tinyhouse@surfcoast.vic.gov.au](mailto:tinyhouse@surfcoast.vic.gov.au) or visit [surfcoast.vic.gov.au/THOWs](http://surfcoast.vic.gov.au/THOWs).



# Digital Antennas

Have the professional do the job correctly

- Latest Digital Technology
- New Kingray Boosters
- Fully Equipped Mobile Vans With Qualified Technicians stocked with large range of cables & connectors
- TV Brackets
- Digital TV Antennas with: Heavy duty construction
- Durable plastics for harsh Australian conditions
- Manufactured by our team in Geelong



**WE SERVICE THE BELLARINE,  
THE SURFCOAST AND GEELONG**

**SALES &  
INSTALLATIONS**

**Hi-Gain Antennas P/L**  
**1/21 Leather St, Breakwater**  
**Ph: 5222 2711**

**Monday – Thursday 7.30am – 4.30pm**  
**Friday 6.30am – 10.30am**





We want to give back to you!

# Christmas Wellness Evening

for Winch Community

Thursday, Dec 21st  
From 7.30 pm

Reiki  
Essential Oils  
Sound Healing  
Nourishing Drinks & Treats

FREE

**EVERYONE WELCOME!**

\*including kids over 7yo  
under parent's supervision



One Body Chiropractic  
21 Hesse St, Winchelsea  
03 5267 2 240



given by One Body's Team



- ❑ LOG BOOK SERVICE
- ❑ AUTO ELECTRICAL
- ❑ TOWING
- ❑ AIR CONDITIONING
- ❑ CLUTCH & BRAKES
- ❑ TYRES
- ❑ WHEEL ALIGNMENT
- ❑ BATTERIES

17 Alsop Drive

## CAR, TRUCK REPAIRS & Roadworthys

PH: 5267 3001

Mob: 0417 137 457

# R.A.K. DAVIS & SONS

## CARTAGE CONTRACTORS

WINCHELSEA

SUPPLIER OF ALL QUARRY MATERIALS, TRUCK HIRE

CARTAGE OF GRAIN, LIME, GYPSUM & SUPER

LANDSCAPE & GARDEN SUPPLIES

56 WILLIS ST, WINCHELSEA

Ph – 5267 2094

Ryan – 0438 672 281

Email: rakdavis@bigpond.com

HESSE  
RURAL  
HEALTH



- Acute Care\*
- Urgent Care\*
- Residential Aged Care\*
- Community Nursing
- Dietetics
- Physiotherapy
- Occupational Therapy

- Diabetes Education
- Social Support Groups
- Counselling
- Home Care
- Health Promotion

\* services from Winchelsea only

[www.hesseruralhealth.com.au](http://www.hesseruralhealth.com.au)

P: (03) 5267 1200 E: [reception@hesse.vic.gov.au](mailto:reception@hesse.vic.gov.au)

## Funeral Planning

*Working out what is best for you.*

Prepaid Funerals, Funeral Bonds, Pay-by instalments...

There are many options and its important to make the right choice.

Alyson Burchell will be available by appointment to answer any questions about funerals and planning ahead.



For more information or to make an appointment contact Sue on 5221 4788

Tuckers Community Office,  
Surf Coast Taxation Services, 22 Willis Street,  
Winchelsea

**First Tuesday of the Month,  
by appointment 10.00am - 12.00pm**

*Caring for families since 1883*

**Tuckers**  
Funeral & Bereavement Service  
*...for a life worth celebrating*

5221 4788  
[www.tuckers.com.au](http://www.tuckers.com.au)

HESSE  
RURAL  
HEALTH

## Volunteers Required

Volunteers are one of Hesse's greatest assets, playing a vital role to enhance the quality of Hesse services & client experiences.



- Bus Driver
- Outings Assistant
- Resident Visitor
- Events & Activities Assistant
- Group Wheelchair Walkers
- Appointment Escort
- Social Support Activities
- Gardening - Winchelsea
- Hospital Auxiliary Member
- Consumer Advisory Committee
- Marketing & Fundraising Committee

For more information please contact Hesse on (03) 5267 1200 or via email [reception@hesse.vic.gov.au](mailto:reception@hesse.vic.gov.au)

## Winchelsea Men's Shed



**For The Community  
Men's Shed Kindling/Offcuts  
Bags of Kindling/timber offcuts  
are available for pick up from  
the Men's Shed on Wednesday's  
from 9.30 to 2.30.**

**If you need a delivery made you  
can call Bill on 0438 083 373.  
The price for a bag of kindling is  
now \$7.00 (up from \$5.00).**

### Nesting Boxes

**Bird or animal nesting boxes are  
available from The Men's Shed.  
These can be made to order.  
Call in on any Wednesday  
to have a chat.**



## Winchelsea Taxis is now Surfcoast Taxis

Our fleet of vehicles are growing to all late models and we are covering an extended area including Winchelsea, Colac, Bannockburn, Inverleigh, Great Ocean Road and Geelong.

We have a fleet of 10 seater Maxi Vans, all with capacity to carry wheelchairs.

Surfcoast Taxis Pty Ltd  
All Bookings: 0408 325 992  
Fax: 5267 2699  
Email: [bannotaxis@gmail.com](mailto:bannotaxis@gmail.com)  
(Admin or Stan 0429 672 888)  
66A Batson Street  
Winchelsea 3241



Accounts NDIS provider. TAC, DVA etc

NDIS provider number 4050001044  
NDIS provider number 4050001048

Wightons Lawyers

Dispute Resolution & Litigation

Debt Collection

Property Law

Wills & Estates

Powers of Attorney

Business Law

Family Law

By appointment only

22 Willis Street, Winchelsea  
ph. 5221 8777

[www.wightons.com.au](http://www.wightons.com.au)

# DEVELOP

**Applications Open: Thursday 1 February**

**Applications Close: 5pm Thursday 29 February**

## Getting That Grant - A Free Arts Development Workshop for Surf Coast Creatives

**Would you like to spend time developing a creative concept or idea through grant funding but are not sure what grant organisations want?**

Getting That Grant is a free workshop with Council's Arts Development Officer, Harriet Gaffney, to help you understand what funding bodies are looking for in successful arts and creatives grant applications and how to tell the story of your project in light of these aims.

**Getting that Grant (online) 6:30pm Thursday 18 January**

**Bookings: [surfcoast.vic.gov.au/ArtistCreativeGrants](http://surfcoast.vic.gov.au/ArtistCreativeGrants)**





Water Supply Specialists

WATER SOLUTIONS

74 Dennis Street, Colac  
5231 1861



ALL THINGS WATER:

- PUMPS - PIPES
- FITTINGS - TANKS
- POOL CHEMICALS
- IRRIGATION
- WATER PURIFICATION
- SOLAR - REPAIR

# M&B WOOD PLUMBING

Call Matt - 0418 319 357  
[mbwoodplumbing.au](http://mbwoodplumbing.au)

## Servicing Winchelsea & surrounds

- General maintenance & blocked drains
- Gas fitting & hot water service upgrades
- New homes & renovations

# WINCHELSEA LIONS CLUB

## PAPER RECYCLING

Paper depot rear of Senior Citizens Rooms  
Harding Street  
NEWSPAPERS,  
MAGAZINES,  
PHONE BOOKS WANTED



RAISING FUNDS FOR  
OUR TOWN & DISTRICT  
5267 2011 or 0408 520 606



Winchelsea and District

## Ebony knows banking

If you need help with yours, you need to meet Ebony.

Ebony shares her knowledge of banking so you can achieve what you want from life.

And, she can meet you when and where it suits you; at the branch, over the phone, or via video call.

If you need help with your banking, call Ebony Berg, Loan Specialist on 5267 3189 or search Bendigo Bank Winchelsea.

[bendigobank.com.au](http://bendigobank.com.au)



Bendigo and Adelaide Bank Limited ABN 11 068 049 178, AFSL/Australian Credit Licence 237879. A1415950 OUT\_33710515

Commercial | Industrial | Domestic

# HAMILTONS

Truck & Bobcat Hire  
Give Aaron a Call  
**0438 438 623**

## Winchelsea Men's Shed



For The Community

51 Hesse Street

Every Wednesday from 9:30am

New members always welcome

For more detail contact:  
Ray Atkinson (Co-ordinator)  
0407 839 139

or

[winchmensed@gmail.com](mailto:winchmensed@gmail.com)

Need a job done?  
Woodworking jobs,  
furniture repairs, small jobs.  
Drop in and talk to us.



**Pixie Wash**  
Mobile Doggie Care  
Dogs up to 20kg  
Pixie Heath  
0417 586 080





**Mariae Veterinary Clinic**  
**0447 781 089**  
 PHONE 24 HOURS  
 714 Handy Main Road Mariae  
 info@mariaevet.com  
 www.mariaevetlink.com.au  
 HOURS // Monday - Friday 8am - 5pm



**MCGREGOR PROJECT SERVICES**

**Winchelsea Local Resident & Business**

Contact:  
 Cam McGregor  
 Production Tree Nursery  
 Ph: 0437 700 754

**Services offered**

- Agricultural/horticultural plantings (natives/exotics) for bulk windbreaks, screenings, driveway features.
- Irrigation - Full service - Commercial/Industrial/Domestic
- Revegetation services - agricultural/roadways/excavation sites/rail/civil
- Drainage Infrastructure - wetlands, matting, fabric
- Consulting
- Maintenance - contract/Ad hoc
- Contract tree/plant growing

**Production**



**Winchelsea Medical Clinic**

**Located at 36 Main Street, Winchelsea 3241**

For any enquires or bookings please contact the clinic on 5292 8028.  
 Or visit our website: [www.winchmc.com.au](http://www.winchmc.com.au)

Opening Hours:  
 Monday - Friday 8:00am - 5.00pm  
 (Monday Evening Clinics available and selected Saturdays)




 Our clinic accepts online bookings via the app called HotDoc.  
 Download the app on the App Store or Google Play or head to our website.

- Domestic and Commercial hire equipment
- Industrial welding gas
- Digging and Earthmoving equipment
- New trailers and trailer repairs
- Firewood
- Stockists of Royal Oil Lubricants products
- LPG for domestic and commercial requirements

Give Chris and the Team a call on **5232 1177** or email [info@colachire.com.au](mailto:info@colachire.com.au)  
[www.colachire.com.au](http://www.colachire.com.au)  
 101 Wallace St Colac 3250



**GREAT Bundle Deal on Bosch Hot Water... FROM ELGAS**

Buy any Bosch Bluetooth continuous flow hot water model - 16Litre, 20Litre or 26Litre and **Receive \$100\* in Elgas bonus LPG gas credits**

From **\$780** or \$52.50 per month

\*For more details: [www.elgas.com.au/appliances/boschaplflow-16-20-26-lpg-bundle-sale](http://www.elgas.com.au/appliances/boschaplflow-16-20-26-lpg-bundle-sale)

**AND... for new customers, an additional \$80 WORTH OF LPG GAS CREDITS\*\* when you open a new LPG Gas account with Elgas**

**NO CONTRACT TO SIGN**

\*\*Further details can be viewed at [www.elgas.com.au](http://www.elgas.com.au)

Ask about the Elgas Easy Payment Plan - 12 months interest free\*\*\* on selected LPG appliances  
\*\*\*Further details can be viewed at: [www.elgas.com.au/epp](http://www.elgas.com.au/epp)

Automatic tanker gas bottle refill **OR** gas bottle exchange refill is available for home or business....  
 Call today or visit our website for our many customer benefits and latest offers

**131 161**  
[www.elgas.com.au](http://www.elgas.com.au)




**SIMPLE STORAGE SOLUTIONS**

- Personal & Business Storage
- Boat, Caravan & Vehicle Storage
- High Security Premises
- Individually Alarmed Units
- Electric Gate Access
- 7 Day Access & CCTV

**YOUR STORAGE PROBLEMS SOLVED**

**5267 3116**  
 6 ALSOP DRIVE, WINCHELSEA 3241

**NATURAL GAS CONNECTIONS**

**M. & L DRAYTON PLUMBING SERVICES**

**YOUR LOCAL LICENSED**

- PLUMBERS (24356)
- GAS FITTERS
- GAS CONVERTERS
- CARBON MONOXIDE TESTING

**MARK 0428 520 142**



# Lupton BUILDERS

SPECIALISING IN QUALITY




REGISTERED Building Practitioner

- NEW HOMES
- ALTERATIONS
- CARPORTS
- BATHROOMS
- EXTENSIONS
- DECKS
- VERANDAHS
- WINDOW REPLACEMENTS
- RENOVATIONS
- PERGOLAS
- RE-CLADS

LEIGH LUPTON  
0438 840 104

CHRIS LUPTON  
0407 681 514

LEIGHLUPTON17@GMAIL.COM Est. 1977

# Winchelsea Star

Since 1977



ISSN 2202-6851



Chiropractic - Remedial Massage - Myotherapy - Sound Healing - Breathwork

## Chiropractic care for:

- Stress & Anxiety
- Body Aches & Tension
- Poor Sleep
- Pain Management
- Family Wellbeing
- Health Longevity




03 5267 2240 Shop 4/21 Hesse St Winchelsea <https://onebodychiropractic.com.au/>

# HF RICHARDSON

PROPERTY

Residential | Rural Lifestyle | Agricultural Farms

Servicing all your real estate needs  
Ken McDonald **0418 524 150**




Charles Stewart & Company are leading livestock and real estate service providers covering Victoria's south west

	LIVESTOCK
Jamie McConachy	0418 522879
Peter McConachy	0408 522878
Matt Nelson	0428 315400
Gerard Bohan	0400 005541
Lachie Barclay	0438 346291
John Thornton	0408 526367
Dougal McIntyre	0439 575612
Ross Spitty	0419 539717

	REAL ESTATE
Michael Stewart	0418 520467
Daryl Osborne	0419 388341
Anthony McDonald	0418 593597
Gerard Bohan	0400 005541
Stephen Lugg	0417 556098
Josh Lamanna	0417 586032




Office  
56 Bromfield Street, Colac  
[www.charlesstewart.com.au](http://www.charlesstewart.com.au)

## Green Lead Electrical

Connecting you to a greener future  
REC 23618

0467 097 101

### Servicing Geelong & the Surf Coast

Specialising in all residential electrical work including:

- Switch board & lighting upgrades
- Outdoor lighting
- Electrical safety checks
- Energy efficient LED lighting
- Ceiling sweep fans & ventilation
- Energy saving advice

Phone Martin Wilkinson:  
**0467 097 101**  
[greenlead@outlook.com](mailto:greenlead@outlook.com)