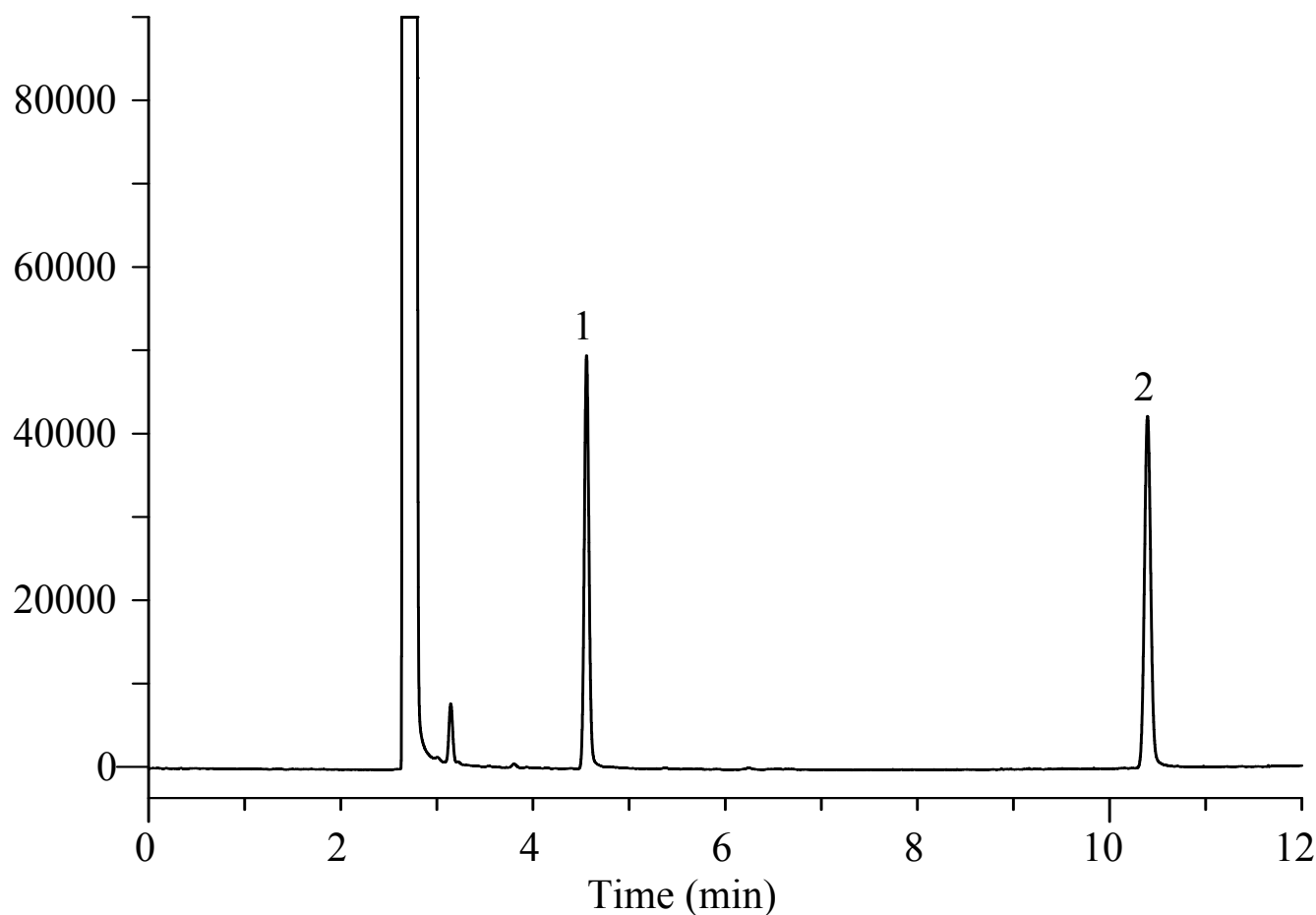


InertSearch™ for GC

InertCap® Applications

Ethanolamines

Data No. GA153-0850

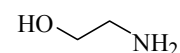


Conditions

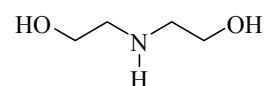
System : GC/FID
Column : InertCap for Amines
0.32 mm I.D. x 30 m
Col. Cat. No. : 1010-69249
Col. Temp. : 120 °C - 10 °C/min - 240 °C
Carrier Gas : He 60 kPa
Injection : Split flow 50 mL/min
240 °C
Detection : FID Range 10⁰
240 °C
Sample Size : 1.0 mg/mL in Methanol
1.0 µL

Analyte :
1. Ethanolamine
2. Diethanolamine

Chemical Structure



1. Ethanolamine



2. Diethanolamine

Structures are created using Chemistry 4-D Draw which is provided by ChemInnovation Software, Inc.