



ALUMNI ASSOCIATION
WASHINGTON STATE UNIVERSITY

JULY 28 - AUGUST 5, 2025

with optional
Dubrovnik Pre-Tour
and Prosecco Post-Tour

NORTHERN ADRIATIC: A NAUTICAL VOYAGE

ABOARD PONANT'S *LE BOUGAINVILLE*

BAY OF KOTOR, HVAR, SPLIT, BRIJUNI ISLANDS,
RAVENNA AND EMILIA-ROMAGNA

Orbridge





ALUMNI ASSOCIATION
WASHINGTON STATE UNIVERSITY

Dear Alumni and Friends,

Join alumni and friends as we weave through a tapestry of enchanting destinations, ancient ports and extraordinary antiquities spanning Croatia, Montenegro and Northern Italy.

Accompanied by a dedicated team of expert tour directors, each day promises new discoveries and unforgettable moments highlighted by medieval architecture, historic charm and artistic treasures along the Dalmatian coast.

Between fascinating excursions on land, cruise in unparalleled style aboard state-of-the-art *Le Bougainville* where the delicate balance between modern luxury and responsible travel is seamlessly achieved. This floating sanctuary of comfort and rejuvenation features spacious staterooms, inviting common spaces and restaurants offering gourmet dining experiences.

With significant savings of more than \$1,000 per couple, we anticipate this tour will fill quickly. To reserve, visit wsu.orbridge.com, call (866) 639-0079 or return the attached reservation form.

Best regards,

Malia Lincoln

Malia Lincoln '24
Operations & Fiscal Specialist
Washington State University Alumni Association

Orbridge takes seriously the responsibility to minimize our global environmental impact. Each year we plant 100,000 trees in U.S. State Forests with afforestation needs as an ongoing initiative among our evolving sustainability efforts. Learn more at orbridge.com/going-green.

Northern Adriatic | Itinerary and Highlights *(subject to change)*

Day 1: EN ROUTE FROM U.S.

Day 2: **ARRIVE IN DUBROVNIK, CROATIA – EMBARKATION** Upon arriving an Onbridge representative will be waiting to assist with your transfer to the ship. Take time to unpack and become familiar with your accommodations. This evening gather for a welcome reception and gala dinner to celebrate the exciting journey ahead.
Overnight: *Le Bougainville* (R,D)

Day 3: **KOTOR, MONTENEGRO** Choose between one of three excursions. Join a local guide for a walking tour of Kotor's iconic landmarks including the Cathedral of Saint Tryphon. Step inside to peruse the rich collection of religious artifacts, frescoes and the beautifully decorated altar. Or visit a local mussel and oyster farm for a tour and tasting offering a unique and delicious experience (additional fee). Alternatively take a boat tour to the enchanting Blue Cave located on the Lustica Peninsula (additional fee). Take advantage of the unique opportunity to swim while inside the cave as the shimmering light creates an otherworldly ambiance. This evening on board, delight in a gourmet dinner crafted from locally sourced ingredients expertly paired with exquisite wines.
Overnight: *Le Bougainville* (B,L,D)

Day 4: **HVAR, CROATIA** Immerse yourself in the spiritual and historical significance of Hvar during a guided walking tour. See the Benedictine Monastery, a site best known for its tradition of lacemaking—a craft passed down through generations of Benedictine nuns. Continue to the Franciscan Monastery for and inside visit. Built in the 15th century, the monastery complex features a church, cloister and bell tower plus an interior adorned with a remarkable collection of art. In the afternoon choose between two optional activities. Visit Carić Winery for a lovely tasting (additional fee). Or join a local guide for a tour of Stari Grad's highlights (additional fee). See Tvrdalj Castle—once the summer residence of the famous Croatian poet Petar Hektorović—and the Stari Grad Museum, featuring a collection of archaeological relics from the Greek and Roman periods.
Overnight: *Le Bougainville* (B,L,D)

Day 5: **SPLIT** Choose between two excursions. Embark upon a full-day boat tour of the Blue Lagoon's coves and inlets with extra time to relax along the shore (additional fee). Alternatively take a guided walking tour of Old Town including the Cellars of Diocletian's Palace, the Cathedral of Saint Domnius and the Ethnographic Museum. After the walking tour explore independently or choose to join a tasting session in the Roman square (additional fee). After dinner stop by the on-board theater for live entertainment.
Overnight: *Le Bougainville* (B,L,D)

Day 6: **BRIJUNI ISLANDS** Relish in a relaxing day at the beach to swim and soak up the sunshine. You may also opt to join a half-day excursion to National Park Brijuni (additional fee). First see the Roman Villa during a guided tour followed by a wildlife safari and leisure time. Back on board take time to freshen up before visiting the main lounge for snacks and beverages accompanied by live music.
Overnight: *Le Bougainville* (B,L,D)

Day 7: **RAVENNA, ITALY** Choose one of two optional excursions. Depart late morning for a guided tour of Ferrara, a UNESCO World Heritage Site and Renaissance gem, with an inside visit to Estense Castle (additional fee). Alternatively take a guided tour of Ravenna's ancient and medieval highlights including the Basilica di San Vitale and Basilica di Sant'Apollinare Nuovo. Ravenna guests can also join the optional afternoon excursion to Pomposa Abbey (additional fee). Alternatively enjoy time on the ship.
Overnight: *Le Bougainville* (B,L,D)

Day 8: **RAVENNA** Today select between two optional excursions. Discover the historic and cultural highlights of Bologna including the Basilica di San Petronio during a full-day tour. Or delight in a tapestry of flavors during a full-day excursion tasting local products of the Emilia-Romagna region (additional fee). The final evening on board, gather for a lively farewell reception followed by a convivial gala dinner.
Overnight: *Le Bougainville* (B,L,R,D)

Day 9: **VENICE – DISEMBARKATION | DEPART FOR U.S.** After breakfast take a complimentary transfer to the airport for flights home. (B)

(B = Breakfast, L = Lunch, D = Dinner, R = Reception)



Split



Kotor

What's Included

- 7 nights aboard luxurious *Le Bougainville*
- All onboard hand-crafted meals: 7 breakfasts, 6 lunches and 7 dinners (served with wine, beer or non-alcoholic beverages) plus special welcome and farewell receptions
- Unlimited select complimentary beverages available 24/7 on board the ship, including in the comfort of your stateroom
- Private tours and special small-group excursions as noted in the 9-day itinerary
- Full guiding services of a team of Orbridge Travel Directors and expert local guides
- Private motor coach transportation
- Luggage portage
- Gratuities to ship crew, Orbridge Travel Directors, local guides, drivers, porters and wait staff for included meals
- Airport transfers for guests arriving and departing during the suggested times



Blue Cave

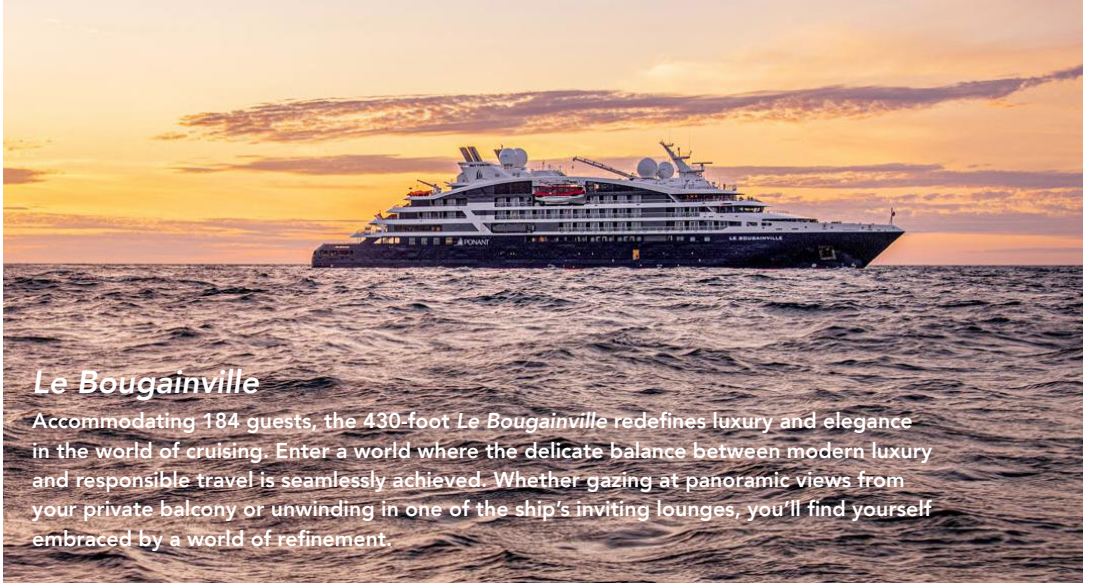


Orbridge

Activity Level: Guests should be able to enjoy two hours or more of walking, be sure-footed on cobbled surfaces, and walk up and down stairs without assistance.

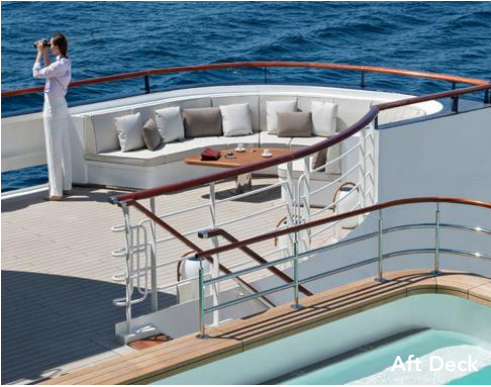


Brijuni Islands

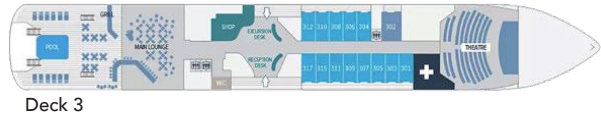


Le Bougainville

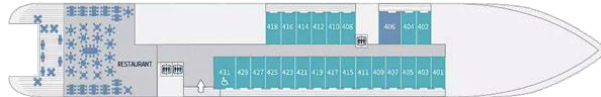
Accommodating 184 guests, the 430-foot *Le Bougainville* redefines luxury and elegance in the world of cruising. Enter a world where the delicate balance between modern luxury and responsible travel is seamlessly achieved. Whether gazing at panoramic views from your private balcony or unwinding in one of the ship's inviting lounges, you'll find yourself embraced by a world of refinement.



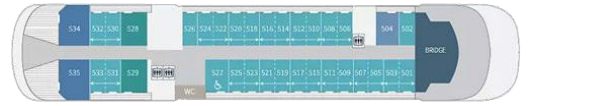
Aft Deck



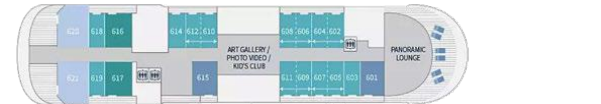
Deck 3



Deck 4



Deck 5



Deck 6



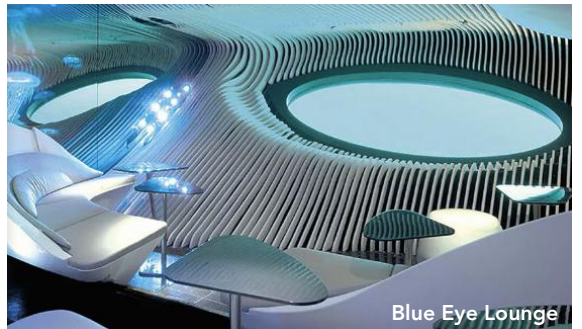
Deck 7



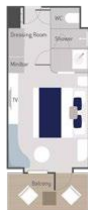
Lounge



Sauna



Blue Eye Lounge



Deluxe (Deck 3) approx. 204 sq. ft.

One king or two single beds, private bathroom with shower, glazed panoramic swing door and rectangular window, private balcony with two armchairs.



Prestige (Decks 4, 5, 6) approx. 204 sq. ft.

One king or two single beds, one chaise lounge chair, private bathroom with shower, panoramic sliding bay window or panoramic swing door, panoramic sliding bay window, private balcony with two armchairs.



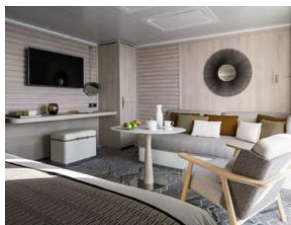
Deluxe Suite (Decks 3, 4, 5, 6) approx. 290 sq. ft.

One king or two single beds, an armchair and sofa, private bathroom with shower, glazed panoramic swing door and panoramic window (Deck 3), panoramic sliding bay window (Decks 4, 5, 6), private balcony with two armchairs.



Prestige Suite (Decks 5, 6) approx. 409 sq. ft.

Priority boarding (Deck 6), champagne and fruit basket upon arrival, assortment of sweet or savory canapés and fruit basket daily, one king or two single beds, lounge with sofa bed convertible to one king or two single bed, armchair, two TVs, sliding courtesy door, two private bathrooms with showers, two panoramic sliding bay windows, private balcony with four armchairs, butler service (Deck 6).



Privilege Suite (Decks 5, 6) approx. 344 sq. ft.

Priority boarding, champagne and fruit basket upon arrival and assortment of sweet or savory canapés and fruit basket daily (Deck 6), one king or two single beds, lounge with chaise lounge and armchair, private bathroom with shower, panoramic sliding bay window, private balcony with two armchairs, butler service.



Grand Deluxe Suite (Deck 6) approx. 484 sq. ft.

Priority boarding, assortment of sweet or savory canapés and fruit basket daily, one king or two single beds, lounge with sofa bed convertible to double bed, armchair, two TVs, private bathroom with shower and Baleno tub, two panoramic sliding bay windows, private terrace with two deckchairs and four-seat dining table, butler service.



Owner's Suite (Deck 5) approx. 505 sq. ft.

Priority boarding, champagne and fruit basket upon arrival, assortment of sweet or savory canapés and fruit basket daily, one king or two single beds, lounge with armchair and double sofa bed, two TVs, private bathroom with shower, Baleno tub, and smart mirror, two panoramic sliding bay windows, one-hour spa treatment (for two), selection of premium spirits at the bar, butler service.

Optional Dubrovnik Pre-Tour

Uncover the hidden gems that make this city a true treasure trove of wonders.

Day +1: EN ROUTE FROM U.S.

Day +2: ARRIVE IN DUBROVNIK, CROATIA Upon arrival to Dubrovnik Airport transfer to the hotel. Later gather for a special welcome dinner in the town center.
Overnight: Grand Hotel Park (D)

Day +3: DUBROVNIK Meet with a local guide for a panoramic city tour. View the City Walls, visit Fort Lovrijenac and see the Western Outer Wall (or Predzide). Explore displays of ancient tools and finished products at a metallurgic casting exposition, see the Rector's Palace and conclude at Dubrovnik's Franciscan Monastery.
Overnight: Grand Hotel Park (B)

Day +4: KONAVLE | DUBROVNIK | MAIN PROGRAM BEGINS After breakfast depart by motor coach for the short, scenic drive to Konavle—a picturesque region with fertile soil and ideal conditions for olive cultivation, honey farming and viticulture. Enjoy the welcoming hospitality of the local producers as you visit an olive oil mill, honey farm, flour mill and winery for tours and tastings. Late afternoon join guests arriving at Dubrovnik's port for the main program and embarkation. (B,I)

What's Included

- 2 nights hotel accommodations
- 2 breakfasts, 1 lunch and 1 dinner
- Guided Dubrovnik city tour including admission fees where applicable
- Tour and tastings through Konavle
- Transportation for included tours
- Luggage portorage
- Gratuities to local guide, driver, porters, hotel staff and wait staff for included meals
- Airport transfers for guests arriving during the suggested times



Optional Prosecco Post-Tour

Conclude your adventures with a delightful experience in Prosecco.

Day 9: PROSECCO Visit Villa Valmarana ai Nani in Vicenza, a splendid property renowned for its exquisite frescoes. The highlight of the garden is a series of 17 stone dwarf statues that give the villa its name. According to local legend, these statues represent the dwarf servants of a noble family and add a whimsical touch to the garden's elegance. Continue to your hotel and enjoy leisure time until dinner.
Overnight: Hotel Villa Michelangelo (L,D)

Day 10: PROSECCO After breakfast set out for tours and tastings at two unique wineries. Learn about the cultivation of Glera grapes, the traditional and modern methods of winemaking and the unique characteristics that make Prosecco so special. Guided tasting sessions provide the opportunity to savor different Prosecco varietals. There will be time to explore independently before dinner this evening.
Overnight: Hotel Villa Michelangelo (B,L,D)

Day 11: PROSECCO | VENICE | DEPART FOR U.S. After breakfast take the complimentary transfer to the airport for flights home. (B)

What's Included

- 2 nights hotel accommodations
- 2 breakfasts, 2 lunches and 2 dinners
- 2 vineyard tours and tastings
- Transportation for included tours
- Luggage portorage
- Gratuities to local guide, drivers, porters and wait staff for included meals
- Airport transfers for guests departing during the suggested times



NORTHERN ADRIATIC: A NAUTICAL VOYAGE

JULY 28 - AUGUST 5, 2025 Dubrovnik Pre-Tour: July 26-29, 2025 | Prosecco Post-Tour: August 5-7, 2025

Stateroom Category	Standard Rate	Special Rate*	Stateroom Category	Standard Rate	Special Rate*
Deluxe (Deck 3)	\$7,549	\$7,045	Privilege Suite (Decks 5, 6)	\$16,549	\$16,045
Prestige (Deck 4)	\$8,049	\$7,545	Grand Deluxe Suite (Deck 6)	\$17,749	\$17,245
Prestige (Deck 5)	\$8,749	\$8,245	Owner's Suite (Deck 5)	\$18,949	\$18,445
Prestige (Deck 6)	\$9,349	\$8,845	Single Deluxe (Deck 3)	\$12,149	\$11,645
Deluxe Suite (Deck 3)	\$10,549	\$10,045	Single Prestige (Deck 4)	\$12,949	\$12,445
Deluxe Suite (Deck 4)	\$11,649	\$11,145	Single Prestige (Deck 5)	\$14,549	\$14,045
Deluxe Suite (Deck 5)	\$12,749	\$12,245	Single Prestige (Deck 6)	\$15,749	\$15,245
Deluxe Suite (Deck 6)	\$13,799	\$13,295	<i>Category rates include the required \$450 per person port fee.</i>		
Prestige Suite (Deck 5)	\$15,249	\$14,745			
Prestige Suite (Deck 6)	\$16,049	\$15,545			

Dubrovnik Pre-Tour			Prosecco Post-Tour		
Category	Standard Rate	Special Rate*	Category	Standard Rate	Special Rate*
Double	\$2,399	\$2,195	Double	\$2,399	\$2,195
Single	\$2,799	\$2,595	Single	\$2,699	\$2,495

*Rates are per person in U.S. dollars based on double occupancy except where noted as Single. Single availability limited.

GUEST INFORMATION:

Guest #1 Name (Title/Salutation): _____
 Email: _____ Class Year: _____
 Home Phone: _____ Alt. Phone: _____
 Address: _____
 City: _____ State: _____ Zip: _____
 Guest #2 Name (Title/Salutation): _____
 Email: _____ Class Year: _____
 Home Phone: _____ Alt. Phone: _____

Reserve by Credit Card:

Online: wsu.orbridge.com
 Phone: (866) 639-0079
 Fax: (206) 452-5655

Reserve by Check:

Made payable to
Orbridge, LLC
 Mail to: Orbridge
 P.O. Box 1376
 Poulsbo, WA 98370

DEPOSIT PAYMENT:

Check ACH (Automated Clearing House) MasterCard/Visa American Express Discover

Card #: _____ Exp. Date: _____ CVV: _____
 Name (as printed on card): _____
 Billing Address (if different from above): _____
 City: _____ State: _____ Zip: _____

CATEGORY SELECTION & DEPOSIT:

Category Preference: 1st choice _____ 2nd choice _____
 # _____ guests joining pre-tour (\$500/person) +
 # _____ guests joining program (\$850/person) +
 # _____ guests joining post-tour (\$500/person) = **TOTAL DEPOSIT: \$** _____
 Pre-Tour Category (choose one): Double Single
 Post-Tour Category (choose one): Double Single

I/we have read, understand, and agree to the full Terms & Conditions at terms.orbridge.com; and I/we agree that Orbridge, LLC is authorized to charge my credit card above and/or take my/our deposit for this program.

Signature: _____ Date: _____

*Special group rate; limited offer. Airfare not included. **A complement to the educational component of this journey, Expedition Libraries are curated collections of useful resources and background reading tailored to this program. Place your deposit on or before the specified date, and one Expedition Library per household will be sent after receipt of final payment. Libraries may be purchased; call for details.



ALUMNI ASSOCIATION
WASHINGTON STATE UNIVERSITY

Washington State University
Alumni Association
Lewis Alumni Centre
P.O. Box 646150
Pullman, WA 99164-6150

NORTHERN ADRIATIC: A NAUTICAL VOYAGE

JULY 28 - AUGUST 5, 2025

Special Alumni Rate:

Save more than \$1,000 per couple

30-DAY REFUND GUARANTEE

FREE EXPEDITION LIBRARY
AN EXCLUSIVE EARLY
RESERVATION BONUS

Reserve by

November 22, 2024**

PRSRST STD
U.S. POSTAGE
PAID
PERMIT NO. 825
SAN DIEGO, CA