

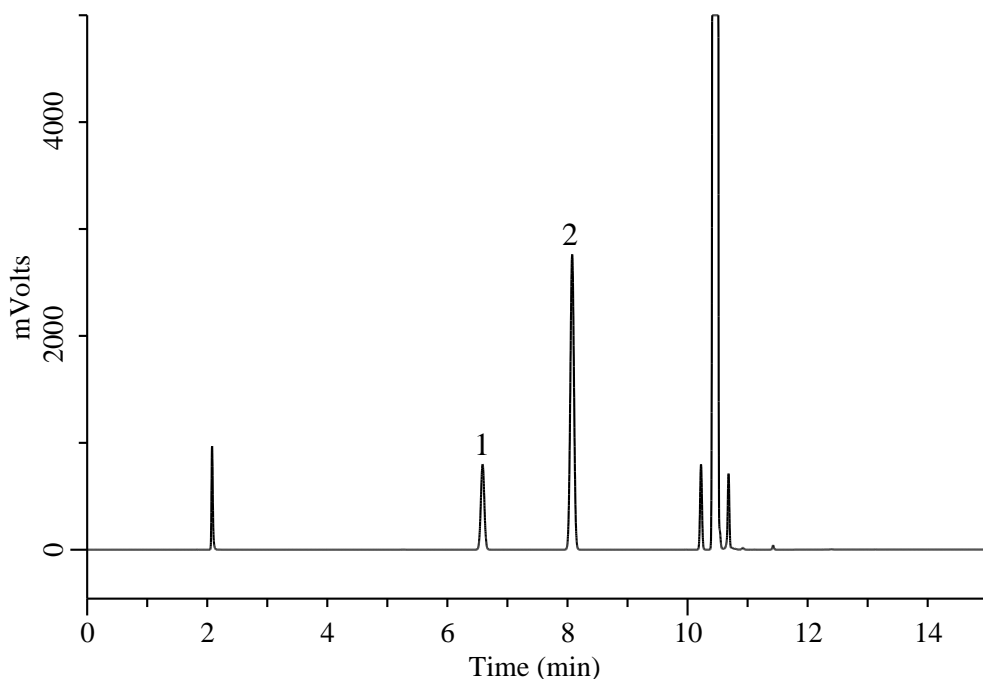
InertSearch for GC

InertCap Applications

Analysis of Hydroxypropylcellulose

(Under the Condition of the draft for the Japanese Pharmacopoeia 18th)

Data No. GA347-7111



Conditions

System : GC-4000 Plus/FID
Column : InertCap 1 (GL Sciences Inc.)
0.53 mm I.D. x 30 m df = 3.0 μ m
Col. Cat. No. : 1010-11448
Col. Temp. : 40 °C(3 min) - 10 °C/min - 100 °C
- 50 °C/min - 250 °C(3 min)
Carrier Gas : N₂ 5.5 mL/min , Constant Flow
Injection : Split 1:50
180 °C
Detection : FID Auto Range
280 °C
Sample Size : 2 μ L

Analyte

1. Isopropyl iodide
2. Methylcyclohexane (I.S.)

Relative retention time

Isopropyl iodide : 6.59 (0.8)
Methylcyclohexane : 8.08 (1.0)

Resolution (1, 2) : 13.38 (\geq 2.0)

RSD of the response factor

calculation (F)(%)(n=6) : 0.04 (\leq 2.0)