

THIS MONTH AT

# FABRIC Warehouse

July 2026

| Always a sale. Always worth it.

| Vol 22

# Summer Savings

*On Select Machines*

Fresh Fabric  
Inspiration

Help Feather  
Find Her Way Home



# ★ ★ LAST CHANCE ★ ★ Machine Savings!

**LIMITED INVENTORY**  
Some models have only 1 remaining!  
★★★

**FINAL CLOSE-OUT MODELS**

— When They're Gone, They're Gone. —

**TOP OF THE LINE**

**ICON**

★ ★ ★

**SPECIAL CLOSE-OUT PRICE**

**1 REMAINING**



★ ★ ★ PREMIUM MACHINES. UNBEATABLE PRICES. ONLY WHILE SUPPLIES LAST! ★ ★ ★

Brilliance™ 75Q  
Sewing Machine

★ ★ ★

**SPECIAL CLOSE-OUT PRICE**

expression™ 710

★ ★ ★

**SPECIAL CLOSE-OUT PRICE**

quilt expression™ 720

★ ★ ★

**SPECIAL CLOSE-OUT PRICE**

quilt expression™ 720  
special edition sewing machine

★ ★ ★

**SPECIAL CLOSE-OUT PRICE**

**WHY ARE THESE PRICES SO LOW?**

**MANUFACTURER CLOSE-OUT PRICING**

These machines are discontinued models with limited remaining inventory.

**TOO LOW TO ADVERTISE ONLINE**

Special pricing available in-store only.

**LIMITED AVAILABILITY**

Once inventory is gone, these prices are gone.

When They're Gone, They're Gone.

★ ★ ★ WE WILL BE CLOSED SATURDAY, JULY 4<sup>th</sup> ★ ★ ★

# 15% OFF IRONS

July 1-7



# CLOSED 4<sup>TH</sup> OF JULY



WISHING YOU A SAFE &  
HAPPY INDEPENDENCE DAY!



# 20% OFF

## Christmas FABRIC

On the bolt  
EXCLUDES 3 YARD BUNDLES,  
SALE ITEMS & MARKDOWNS

**ALL JULY LONG**



★ ★ ★ WE WILL BE CLOSED SATURDAY, JULY 4<sup>th</sup> ★ ★ ★

# creative icon™ 3

## New Features



**NEW**  
to  
**PFAFF®**



### New Embroidery Unit

The new embroidery unit reduces noise and vibration and provides an industry-leading embroidery size of 450 x 450 mm\*. The newly designed attachment for both the embroidery unit and hoops makes the setup quick and easy.

**NEW**  
to  
**PFAFF®**



### Free-Arm Embroidery

With free-arm embroidery it is easier than ever to personalize ready-made items. Embroider on tubular pieces, such as baby clothes, bags and pillowcases without having to take the seams apart.

**NEW**



### Quick Quilt Settings with Bobbin pick-up

Quilting in embroidery often requires multiple adjustments for a clean look on both sides. With this new feature, all settings are done for you. The machine turns off ActivStitch™ Technology, increases thread tension, turns off automatic thread cut and activates the new bobbin pick-up feature.

**NEW**



### Enhanced STITCH CREATOR™

Design unique stitches wider than 9 mm from scratch or edit the machine's built-in stitches. Adjust the stitch length and width, reshape stitch patterns, or create decorative stitches with complete control. Perfect for adding signature touches, creating embellishments, or bringing your ideas to life.

**NEW**  
to  
**PFAFF®**



### Fabric Selection

Set the type of fabric you are sewing and the machine automatically adjusts to the optimal settings for your chosen fabric, technique, and stitch.

**NEW**  
to  
**PFAFF®**



### Exact Position with Scaling

Adjust your design's position and rotation with stitch-point accuracy, reducing the time and effort spent achieving perfect hooping. If any elements extend beyond the hoop limits, the enhanced Exact Position feature allows you to easily scale the design to fit. Scaling also makes final design parts fit easily when multi-hooping.

\* Reduced noise and vibrations when compared to the PFAFF® creative icon™, creative icon 2 and creative performance™ 950 embroidery units. The industry's largest embroidery area is 450 x 450 mm when compared to Brother Aveneer, Babylock Radiance, Bernina B990 and Janome Continental M17, and requires the optional creative™ Grand Turnable Hoop.

\*\* Some CREATIVATE features require a paid membership.



ANY  
3 YARD  
*Bundle*

ALL JULY LONG

BUY 2 OR MORE

SAVE

10%

NEW FABRIC ARRIVAL

# Daisy Crush

by FIGO



BLACK & WHITE FABRICS

**15% OFF**

July 8-14



Excludes 3-Yard Bundles, Sale Fabrics, and Markdowns

★ ★ ★ WE WILL BE CLOSED SATURDAY, JULY 4<sup>th</sup> ★ ★ ★

— HELLO —

# JULY



## FIND

# *Feather.*

## UNLOCK

### SURPRISE SAVINGS.

#### HOW IT WORKS

- 1 Browse the catalog and watch for **Feather**.
- 2 When you spot Feather, click to reveal a **surprise offer**.
- 3 Save your coupon and redeem it **in-store**.

#### THE FINE PRINT

- Cannot be combined with other offers, promotions, or discounts.
- Excludes classes and gift cards.
- Not valid on previous purchases or special orders.
- Fabric Warehouse reserves the right to modify or cancel this promotion at any time.
- See store for details.





**FRIDAY SEW DAY | July 3 & 10 | 9 AM – 4 PM**

Bring your current project and enjoy a day of sewing, creativity, and community.

**\$5 | [REGISTER HERE](#)**



**PFAFF**  
Perfection starts here.™

# SUMMER ROLLER BAG SALE

**SAVE 30%**

Select PFAFF® Roller Bags

June 1–July 31

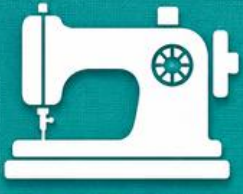
# RUDOLPH

THE  
RED-NOSED REINDEER®

 NORTHCOTT  
*Cottons that feel like silk*



GREAT MEMORIES



ARE SEWN  
HERE



# Kids Camp

• RETURNS! •



JOIN US FOR A CREATIVE & FUN-FILLED WEEK  
WHERE KIDS LEARN NEW SKILLS AND MAKE MEMORIES TO LAST A LIFETIME!

## Kids Camp Intermediate

July 22-24

10 AM - 2 PM

Ages 10 and up

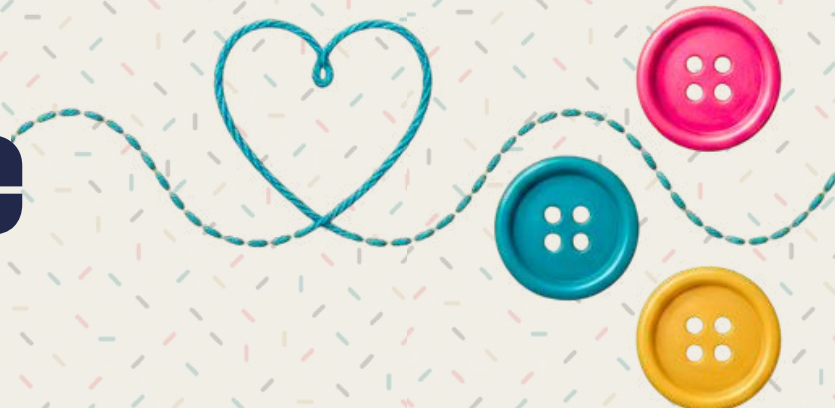
Sewing machine, fabric, thread,  
and everything else is provided!

Parents must provide lunch.

\$200

[REGISTER HERE](#)

**FABRIC**  **Warehouse**



★ ★ ★ WE WILL BE CLOSED SATURDAY, JULY 4<sup>th</sup> ★ ★ ★

# Big Style. Small Price.

JUDY Sewing Cabinet

Now \$399.99!



NEW FABRIC ARRIVAL

# Floral Romance

by FIGO



★ ★ ★ WE WILL BE CLOSED SATURDAY, JULY 4<sup>th</sup> ★ ★ ★

# PREVIOUSLY LOVED MACHINES

Quality machines. ★ Great prices.



EXPLORE A RANGE OF IN-STORE OPTIONS



## SEWING

**PFAFF**

Perfection starts here.™



**\$1299.99**

(1 Available)

Has all accessories  
and manuals



quilt expression 4.2

**Husqvarna  
VIKING**



**\$899.99**

(2 Available)

Embroidery capable  
with optional arm.  
Floppy disks  
unavailable.



Designer 1

## SERGER

**Husqvarna  
VIKING**



**\$899.99**

(1 Available)



Huskylock 936

## MECHANICAL

**WHITE**



**\$99.99**



571 Zig-Zag

**Husqvarna  
VIKING**



**\$99.99**



Model 2841

QUALITY MACHINES.

*Made to create.*

READY FOR THEIR NEXT PROJECT.

★ ★ ★ WE WILL BE CLOSED SATURDAY, JULY 4<sup>TH</sup> ★ ★ ★

# SAVE 30%

## Select Roller Bags

June 1–July 31



# Celebrate Christmas in July with Special Offers



## Visit Us In Store July 8–19th



# 20% OFF BLENDERS

July 15–21

Excludes 3-Yard Bundles,  
Sale Fabrics & Markdowns



 Husqvarna®

VIKING®

## FREE Roller Bag

With Every TOPAZ™ 55Q Purchase  
Limited Time Offer.





**15% OFF  
FLANNEL**

**July 22–28**

Excludes 3-Yard Bundles,  
Sale Fabrics & Markdowns



**HENRY GLASS**

# Oak & Berries



NEW FABRIC ARRIVAL



★ ★ ★ WE WILL BE CLOSED SATURDAY, JULY 4<sup>th</sup> ★ ★ ★

# Meet Eleanor II

## Sit. Stand. Sew. All in One.

Intro price \$899.99 + FREE cutting mat  
& pressing pad (\$250 value)



Ends 7/31. Restrictions apply.

ANNA MARIA TEXTILES

Indelible:  
**INK**

NEW FABRIC ARRIVAL



★ ★ ★ WE WILL BE CLOSED SATURDAY, JULY 4<sup>th</sup> ★ ★ ★

# Lift Smarter, Not Harder

Free \$500 Electric Lift Upgrade

With qualifying Kangaroo & Joey or Wallaby sewing cabinet purchase



Ends 7/31. Restrictions apply.



**PFAFF**  
Perfection starts here.™

## CHRISTMAS IN JULY

**Celebrate Early with PFAFF®**

Discover exceptional offers  
at Emma's Quilt Cupboard.

July 8–19, 2026

# New to Your Machine? start here

BASIC MACHINE & SERGER  
CLASSES WITH KAREN RAINES

Learn to use your sewing machine or serger with confidence in a welcoming, beginner-friendly environment. If you are a novice or simply looking for a refresher, this class will cover all the essentials to help you get started.



register

creativate

June 12 – July 17, 2026

Embroidery Software • Quilting Software  
Crafting Software • Project Instructions  
Crafting Designs • Embroidery Collections

Join Now & Save  
**20% OFF**  
Your First Year of a  
CREATIVATE • Membership



Sign Up Today



THIS MONTH AT

# FABRIC Warehouse

July 2026

*Always a sale. Always worth it.*

Vol 22



[www.fabric-warehouse.net](http://www.fabric-warehouse.net)



863-680-1325



[fabricwarehousefl@gmail.com](mailto:fabricwarehousefl@gmail.com)