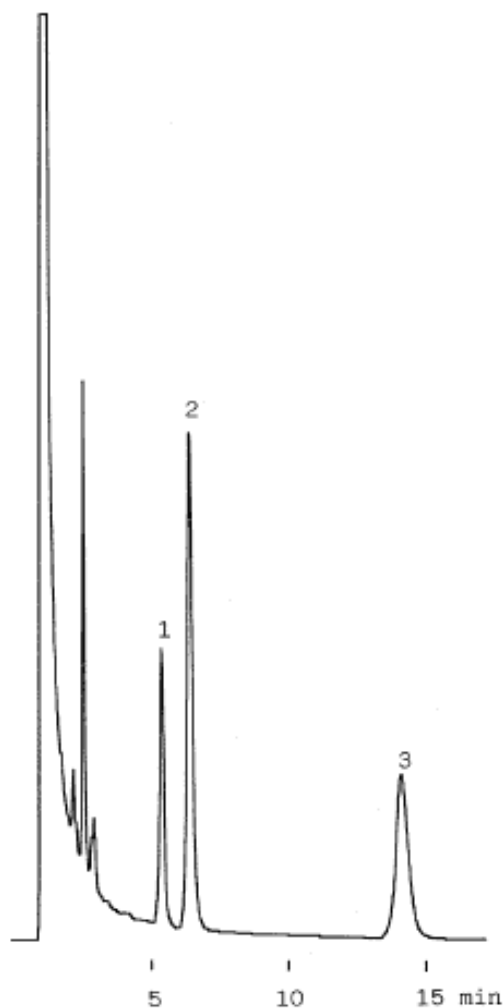


InertSearch™ for LC

Inertsil® Applications

Theobromine in Plasma

Data No. LA149-0000



Column :Bioptic AV-1
5 μ m
150 \times 4.6mmI.D.

Column Cat. No. :5020-02511

Eluent :CH₃CN/0.1M K₂HPO₄(pH7.2 by H₃PO₄)=2.5/97.5

Flow rate :1.0 mL/min.

Col. Temp. :25°C

Detection :UV 270 nm

Injection Vol. :5 μ L

Sample :

Solutes : 1. Theobromine Ca.40 μ g
2. Theophylline 67.5 μ g
3. Caffeine 80 μ g
in Coagulation Control Plasma 1mL