



Fall-Winter 2024

ASOLO IS A FAMILY COMPANY WHICH HAS GAINED AN IMPORTANT
WORLDWIDE POSITION DURING THE YEARS THANKS TO HIS VALUES. OUR
COMMITMENT IS TO FIND THE PERFECT TUNING BETWEEN TRADITION AND
INNOVATION.

THE TRADITION AS SHOE MAKERS IS OUR START, OUR ROOTS, OUR ORIGIN;
THE TRADITION IS WHAT IDENTIFY US AND TELL THE WORLD WHERE WE
COME FROM. THE INNOVATION IS WHAT MAKES US NEVER STOP OUR
RESEARCH, OUR STUDIES, OUR CHALLENGES FOR IMPROVING YOUR
EMOTIONS DURING OUTDOOR ACTIVITIES. THESE TWO KEYWORDS ARE THE
REASON OF OUR JOURNEY INTO THE OUTDOOR WORLD, A JOURNEY FILLED
OF PASSION WHICH WILL NEVER END.

INDEX

PERFORMANCE SNOWSHOEING

WINTER BOOTS

URBAN OUTDOOR



PERFORMANCE SNOWSHOEING

Definition & Benefits



ASOLO RECREATIONAL SNOWSHOES AND WINTER TREKKING:

While snowshoeing began thousands of years ago as a means of travel and a way to hunt, in recent years, it has become a popular winter pastime for fitness and recreation.

Every winter more and more summer walkers are turning to snowshoeing as their winter activity. Today, snowshoes are lighter weight and engineered with modern materials like nylon, polyethylene and other specialized materials which provide a higher level of performance.

This category appeals to the widest range of users and they are designed for varied terrain. These snowshoes are perfect for beginners, as well as walkers and hikers spending most of their time on trails, parks and golf courses.

THE BENEFITS OF SNOWSHOEING:

Snowshoeing is one of the fastest growing winter sports and it attracts a wide range of consumers who are looking for an inexpensive way to embrace winter and stay active outside.

It is safe, simple and easy to learn. Snowshoeing is a fun winter activity that can be enjoyed by the entire family from kids to grandparents. Snowshoes are versatile: they can be used for backyard excursions, a walk in the park or hiking in the back - country.

Snowshoeing is a low impact workout and a highly effective way to burn calories and stay active all winter. Walking with snowshoes means that you can venture into nature often where skiers and climbers can't reach. Exploring valleys & forests covered in a blanket of snow, reaching peaks or mountain villages 'shut off' by winter.

PERFORMANCE SNOWSHOEING

Customer Profile



BEST USE: Snowshoeing, hiking on snow and harsh weather.

CUSTOMER PROFILE

Gender:
Women & Men

Age:
All ages

CUSTOMER TARGET

Students, young professional, middle management
Medium high social level
Snowshoeing, ski, outdoor, hiking and camping passionate

CUSTOMER PROFILE EXPECTATIONS

1. Lightness
2. Warmth & Waterproofness
3. Traction & Stability
4. Fit & Comfort
5. Security
6. Durability
7. Style
8. Made in

PERFORMANCE SNOWSHOEING

Technologies



WARMTH & WATERPROOFNESS:

Gore-Tex Insulated Comfort Footwear – is made to keep you warm, dry and protected, even when you're out in demanding winter conditions. A specially-constructed layer of breathable insulation adds comfort where and when you need it. So even if the temperature drops, you stay comfortable and protected.



SECURITY:

The RECCO® Rescue System is two-part technology; ski resorts and mountain rescue teams carry RECCO® detectors, which send out a search signal. RECCO® reflectors worn by outdoors people, bounce back a directional signal that directs the rescuer straight to the reflector. Unlike other technologies, multiple RECCO® reflectors on a person can improve detection. The reflector is permanently attached and requires no training or batteries to function. It is always “on” and ready. (We added this technology inside the tongue of the boot).



TRACTION:

Vibram Arctic Grip is a state-of-the-art technology representing the most advanced cold-weather gripping system Vibram has ever created. The Arctic Grip technology is entirely rubber material without addition of metal components or inserts. Unparalleled technology on slippery, wet ice surfaces and the outstanding durability represent the three main benefits of the Arctic Grip Compound. This product will not prevent slipping on cold, slick, wet, icy, or snowy surfaces and does not replace use of crampons or spikes. This product is not intended for use on, and may harm, indoor surfaces.



FIT & COMFORT:

From the beginning Asolo's philosophy has been to develop innovative and technologically advanced footwear with great looks following the correct morphology of the feet. Asolo pays particular attention to the natural flex of the foot while also making sure that performance and comfort of its footwear is maximized. In the whole Asolo collection, the lasts are broadly defined by men's, women's and child's fit.



MADE IN EUROPE:

Made in Europe represents the excellence of creativity and craftsmanship. The European excellences are famous all over the world, our artistic and craftsmanship, the genius and a lot of commitment have allowed us to create a completely line of products with top-level characteristics. We live, breathe, design and manufacture high quality, like no other in the world.



RESOLING:

An essential environmental advantage of products comes from their long-lasting durability. All Asolo products are thought, designed and engineered to get resoled. At Asolo since the beginning we have always offered the resoling service, but today we made a step forward being the first Outdoor brand who digitalized this service. Today, all our partners and end-consumers can access to the resoling service directly from our website.

PERFORMANCE SNOWSHOEING



Ghiaccio Technology

EVA MIDSOLE:

The midsole package is designed around the last and made by: mono density moulded EVA, which guarantees the maximum comfort, stability and flexibility.

BENEFITS OF EVA MIDSOLE:

- > The mono density midsole provides an excellent next to the foot cushioning and stability.
- > The mono density midsole provides a great anatomical support.
- > The mono density midsole is extremely light.



THE GHIACCIO OUTSOLE:

The outsole package is designed around the last and made by Vibram rubber sole with the Arctic Grip compound: the new high performance rubber compound featuring unparalleled grip on cold, icy, wet and snowy terrains, rugged longevity and optimal ground adaptability.

BENEFITS OF THE GHIACCIO OUTSOLE:

- > The rubber bottom has a large area of contact; self cleaning design.
- > The rubber bottom is designed to optimize the grip and durability for each surface or activity.
- > The heel is well sculpted to prevent problems during descent.
- > The rubber bottom compound is Vibram Arctic Grip.

ARCTIC GV

Best use: Snowshoeing, for winter and harsh weather hikes.

MAN A12536 00 A176
grey-gunmetal-red



WOMAN A12537 00 A884
grey-gunmetal-blue peacock



570
1/2 PAIR
8 UK



FIT
MM-ML



SIZE
MAN
7,5-12,5 UK

SIZE
WOMAN
4,5-7,5 UK

UPPER: Water-resistant suede and high tenacity nylon

LINING: Gore-Tex Insulated Comfort Footwear

LASTING BOARD: Asoflex 00 SR

ANATOMIC FOOTBED: Lite 2 Alu

SOLE: Vibram Ghiaccio with Arctic Grip compound (rubber-Eva)

COMFORT RANGE: - 20 °C

MADE: in Europe

RESOLING: The model can get resoled

SUSTAINABILITY: Contains leather from a tannery rated by the Leather Working Group (LWG)



WINTER BOOTS

Customer Profile



BEST USE: Ideal lightweight winter boots for hiking and urban walks in snowy and icy conditions.

CUSTOMER PROFILE

Gender:
Women & Men

Age:
All ages

CUSTOMER TARGET

Students, young professional, middle management
Medium high social level
Travels, hiking and camping passionate

CUSTOMER EXPECTATIONS

1. Lightness
2. Warmth & Waterproofness
3. Traction & Stability
4. Fit & Comfort
5. Style & Design

WINTER BOOTS

Technologies



WARMTH & WATERPROOFNESS:

Gore-Tex Insulated Comfort Footwear – is made to keep you warm, dry and protected, even when you're out in demanding winter conditions. A specially-constructed layer of breathable insulation adds comfort where and when you need it. So even if the temperature drops, you stay comfortable and protected.



FIT & COMFORT:

From the beginning Asolo's philosophy has been to develop innovative and technologically advanced footwear with great looks following the correct morphology of the feet. Asolo pays particular attention to the natural flex of the foot while also making sure that performance and comfort of its footwear is maximized. In the whole Asolo collection, the lasts are broadly defined by men's, women's and child's fit.



TRACTION:

Vibram Arctic Grip is a state-of-the-art technology representing the most advanced cold-weather gripping system Vibram has ever created. The Arctic Grip technology is entirely rubber material without addition of metal components or inserts. Unparalleled technology on slippery, wet ice surfaces and the outstanding durability represent the three main benefits of the Arctic Grip Compound. This product will not prevent slipping on cold, slick, wet, icy, or snowy surfaces and does not replace use of crampons or spikes. This product is not intended for use on, and may harm, indoor surfaces.



TRACTION:

Asolo's footwear are made using outsole designed by Asolo. The Asolo Sigma Grip is an innovative exclusive Asolo compound that represents the most advanced traction system for all rugged terrains. The Sigma Grip technology is made entirely of rubber material without the addition of metal components or inserts. Unmatched technology on wet surfaces and exceptional durability are the main advantages of the compound.



COMFORT:

OrthoLite started in 1997 when the founder Glenn Barrett on a sourcing trip to Taiwan was introduced to an innovative new open-cell PU foam. He formulated his first batch of prototypes—making a better insole that was more comfortable, but also provided a cooler, drier, and healthier interior environment of the shoe that was also easier on the planet by using 5% recycled outsole rubber waste material in the mix.



RESOLING:

An essential environmental advantage of products comes from their long-lasting durability. All Asolo products are thought, designed and engineered to get resoled. At Asolo since the beginning we have always offered the resoling service, but today we made a step forward being the first Outdoor brand who digitalized this service. Today, all our partners and end-consumers can access to the resoling service directly from our website.

520 GV WINTER

Best use: Ideal winter boot for harsh weather on trails and in town.

MAN A11030 00 A388
black



644
1/2 PAIR
8 UK



FIT
MM



SIZE
MAN
7,5-12,5 UK

UPPER: Water-resistant full grain leather mm 2,6-2,8

LINING: Gore-Tex Insulated Comfort Footwear

LASTING BOARD: Asoflex 00 SR

ANATOMIC FOOTBED: Lite 2 Alu

SOLE: Vibram Ghiaccio with Arctic Grip compound (rubber-Eva)

COMFORT RANGE: - 20 °C

MADE: in Europe

RESOLING: The model can get resoled

SUSTAINABILITY: Contains leather from a tannery rated by the Leather Working Group (LWG)

EVA MIDSOLE:

The midsole package is designed around the last and made by: mono density moulded EVA, which guarantees the maximum comfort, stability and flexibility.

AS Tech: Asolo Stability Technology has been designed and incorporated to give structure and torsion stability.

BENEFITS OF EVA MIDSOLE:

- > The mono density midsole provides an excellent next to the foot cushioning and stability.
- > The mono density midsole provides a great anatomical support.
- > The mono density midsole is extremely light.



THE CROSS OUTSOLE:

The outsole package is designed around the last and made by Asolo rubber sole with the Sigma Grip compound: the high performance rubber compound featuring traction, grip, durability and self-cleaning action.

BENEFITS OF THE CROSS OUTSOLE:

- > The rubber bottom has a large area of contact; self cleaning design.
- > The rubber bottom is designed to optimize the grip and durability for each surface or activity.
- > The heel is well sculpted to prevent problems during descent.
- > The rubber bottom compound is Sigma Grip.

TAHOE WINTER GTX

Best use: Ideal lightweight winter boots for hiking and snowsports.

MAN A40068 00 A778
black-black



WOMAN A40069 00 A778
black-black



494
1/2 PAIR
8 UK



FIT
MM-ML



SIZE
MAN
7-12,5 UK

SIZE
WOMAN
4-9 UK

UPPER: Water resistant suede and polyester reinforced with TPU material

LINING: Gore-Tex Insulated Comfort Footwear

LASTING BOARD: Asoflex AG in polypropylene

ANATOMIC FOOTBED: Asolo/Ortholite

SOLE: Asolo Cross with Sigma Grip compound (rubber-Eva)

COMFORT RANGE: - 15 °C

MADE: in Asia

RESOLING: The model can get resoled

SUSTAINABILITY: Contains leather from a tannery rated by the Leather Working Group (LWG)

WINTER BOOTS



Crystal AG Technology

EVA MIDSOLE:

The midsole package is designed around the last and made by mono density moulded EVA offering the greatest support, stability and comfort.

BENEFITS OF EVA MIDSOLE:

- > Excellent cushioning and stability
- > Perfect anatomic support
- > Lightness



CRYSTAL AG OUTSOLE:

The outsole package is born from the collaboration between Asolo and Vibram and designed around the last and made by Vibram rubber sole with Arctic Grip compound: the new high performance rubber compound featuring unparalleled grip on cold, icy, wet and snowy, rugged longevity and optimal ground adaptability.

BENEFITS OF THE CRYSTAL AG OUTSOLE:

- > The rubber bottom has a large area of contact; self cleaning design.
- > The rubber bottom is designed to optimize the grip and durability for each surface or activity.
- > The heel is well sculpted to prevent problems during descent.
- > The rubber bottom compound is Vibram Arctic Grip.

NUUK GV

Best use: Ideal lightweight shoe for hiking and urban walks in snowy and icy conditions.

WOMAN A26037 00 A933
black-blue moon



MAN A26036 00 A778
black-black



470
1/2 PAIR
8 UK



FIT
MM-ML



SIZE
MAN
7-12,5 UK

SIZE
WOMAN
4-8 UK

UPPER: Water-resistant suede mm 1,6-1,8 and polyester

LINING: Gore-Tex Insulated Comfort Footwear

LASTING BOARD: Asoflex 00 SR Fast

ANATOMIC FOOTBED: A-Sport

SOLE: Asolo/Vibram Crystal AG with Arctic Grip compound (rubber-Eva)

COMFORT RANGE: - 10 °C

MADE: in Asia

RESOLING: The model can get resoled

SUSTAINABILITY: Contains leather from a tannery rated by the Leather Working Group (LWG)



STAMP
OUT
REALITY

URBAN OUTDOOR

Supertrek Gtx



REINTRODUCING A 1980S ASOLO ORIGINAL:

The original Asolo Supertrek debuted in the '70s as a lightweight alternative to our classic, heavy-duty hiking boots. After a few years on the trail, the Supertrek was retired. Now 40 years later, we've re-introduced the Supertrek as a more versatile version of its former self. It's comfortable both on the trail and around town, and incorporates durable, lightweight materials, a cushioning EVA midsole, and a new outsole that adapts to a wide variety of terrain. We're proud to re-introduce this Asolo original.

SUPERTREK GV:

Best Vintage Hiking Boots Restyled for Modern Everyday Wear.

The spirit of old-school mountain style is alive and well in a vintage-inspired breed modern hiking boots fit for wearing on and off the trails.

Not much has changed for the Supertrek in the forty-plus years since Asolo began handmaking them at its Asolo, Italy factory. Suede-grain leather uppers with a Gore-Tex waterproof membrane sit atop an Asolo outsole with traction for days. With a pair weighing in at 500 Gr. they are a lightweight boot but and are fully capable of your next city or hiking trip.

URBAN OUTDOOR

Customer Profile



BEST USE: Vintage hiking boots restyled for modern every day wearing on and off the trails.

COSTUMER PROFILE

Gender:
Women & Men

Age:
All ages

COSTUMER TARGET

Students, young professional, managers
Medium high social level
Travel, hiking and camping passionate

COSTUMER EXPECTATIONS

1. Style & Design
2. Fit & Comfort
3. Lightness
4. Waterproofness
5. Traction & Stability

URBAN OUTDOOR

Technologies



BREATHABILITY & WATERPROOFNESS:

Gore-Tex Extended Comfort Footwear – is made to keep you dry and protected when you're out in your adventures.. A specially-constructed layer of breathable insulation adds comfort where and when you need it. So you stay dry and protected in every condition.



FIT & COMFORT:

From the beginning Asolo's philosophy has been to develop innovative and technologically advanced footwear with great looks following the correct morphology of the feet. Asolo pays particular attention to the natural flex of the foot while also making sure that performance and comfort of its footwear is maximized. In the whole Asolo collection, the lasts are broadly defined by men's, women's and child's fit.



TRACTION:

Vibram Mega Grip is cutting-edge technology that represents the most advanced traction system for wet and dry surfaces that Vibram has ever created. Mega Grip technology is made entirely of rubber material without the addition of metal components or inserts. Unmatched technology on wet surfaces and exceptional durability are the main advantages of the compound.



TRACTION:

Asolo's footwear are made using outsole designed by Asolo. The Asolo Sigma Grip is an innovative exclusive Asolo compound that represents the most advanced traction system for all rugged terrains. The Sigma Grip technology is made entirely of rubber material without the addition of metal components or inserts. Unmatched technology on wet surfaces and exceptional durability are the main advantages of the compound.



MADE IN EUROPE - ITALY:

Made in Italy and Europe represents the excellence of creativity and craftsmanship. The Italian and European excellences are famous all over the world, our artistic and craftsmanship, the genius and a lot of commitment have allowed us to create a completely line of products with top-level characteristics. We live, breathe, design and manufacture high quality, like no other in the world.



RESOLING:

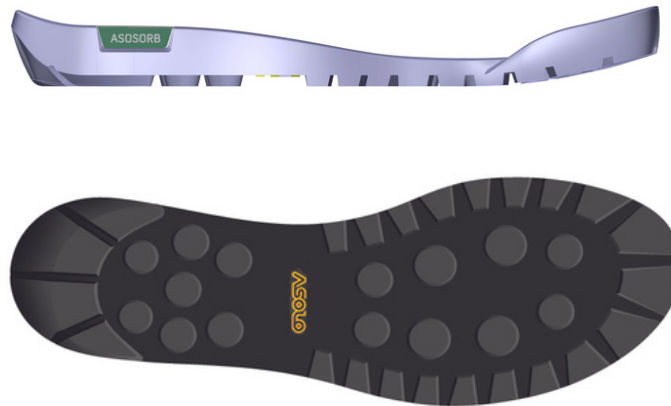
An essential environmental advantage of products comes from their long-lasting durability. All Asolo products are thought, designed and engineered to get resoled. At Asolo since the beginning we have always offered the resoling service, but today we made a step forward being the first Outdoor brand who digitalized this service. Today, all our partners and end-consumers can access to the resoling service directly from our website.

EVA MIDSOLE:

The midsole package is designed around the last and made by: mono density EVA offering the greatest support, stability and comfort.

BENEFITS OF THE EVA MIDSOLE:

- > Excellent cushioning and stability
- > Perfect anatomic support
- > Lightness



THE SUPERTREK OUTSOLE:

The outsole package is designed around the last and made by Asolo rubber sole with the Sigma Grip compound: the high performance rubber compound featuring traction, grip, durability and self-cleaning action.

BENEFITS OF THE SUPERTREK OUTSOLE:

- > **The rubber bottom has a large area of contact; self cleaning design.**
- > The rubber bottom is designed to optimize the grip and durability for each surface or activity.
- > The heel is well sculpted to prevent problems during descent.
- > The rubber bottom compound is Sigma Grip.

SUPERTREK GTX



Best use: Vintage hiking boots restyled for modern every day wearing on and off the trails.

WOMAN A25501 00 B188
wool-night blue



WOMAN A25501 00 B155
earth beige-deep teal



WOMAN A25501 00 B152
earth beige-beige



WOMAN A25501 00 B154
earth beige-chili red



WOMAN A25500 00 A778
black-black



434
1/2 PAIR
5 UK



FIT
ML



SIZE
WOMAN
4-8 UK

UPPER: Water-resistant suede mm 1,6-1,8

LINING: Gore-Tex Extended Comfort Footwear

LASTING BOARD: Asoflex 00 SR fast

ANATOMIC FOOTBED: Lite 2 plus

SOLE: Asolo Supertrek with Sigma Grip (rubber-eva)

MADE: in Europe

RESOLING: The model can get resoled

SUSTAINABILITY: Contains leather from a tannery rated by the Leather Working Group (LWG)

SUPERTREK GTX



Best use: Vintage hiking boots restyled for modern every day wearing on and off the trails.

MAN A25500 00 B188
wool-nigh blue



MAN A25500 00 B160
wool-garden green



MAN A25500 00 B159
wool-desert beige



MAN A25500 00 B157
wool-black cherry



MAN A25500 00 A778
black-black



513
1/2 PAIR
8 UK



FIT
MM



SIZE
MAN
7-12,5 UK

UPPER: Water-resistant suede mm 1,6-1,8

LINING: Gore-Tex Extended Comfort Footwear

LASTING BOARD: Asoflex 00 SR fast

ANATOMIC FOOTBED: Lite 2 plus

SOLE: Asolo Supertrek with Sigma Grip (rubber-eva)

MADE: in Europe

RESOLING: The model can get resoled

SUSTAINABILITY: Contains leather from a tannery rated by the Leather Working Group (LWG)

Ground Technology

MICROPOROUS MIDSOLE:

The midsole package is designed around the last and made by: mono density microporous offering the greatest support, stability and comfort.

BENEFITS OF THE MICROPOROUS MIDSOLE:

- > Excellent cushioning and stability
- > Perfect anatomic support
- > Lightness



THE GROUND OUTSOLE:

The outsole package is born from the collaboration between Asolo and Vibram and designed around the last and made by Vibram rubber sole with Mega Grip compound: the high performance rubber compound featuring unparalleled grip on wet and dried terrains.

BENEFITS OF THE GROUND OUTSOLE:

- > The rubber bottom has a large area of contact and self cleaning design.
- > The rubber bottom is designed to optimize grip and durability for each surface or activity.
- > The heel is well sculpted to prevent problems during descent.
- > The rubber bottom compound is Vibram Mega Grip.



Best use: Lightweight shoe ideal for urban excursions and walks.

WOMAN A38027 00 B190
jeans-blue



WOMAN A38027 00 A897
gerbera



WOMAN A38027 00 A608
shark-grey



WOMAN A38027 00 A415
sage



348
1/2 PAIR
5 UK



FIT
ML



SIZE
WOMAN
4-8 UK

UPPER: Water-resistant Nubuck mm 1,3-1,5

LINING: Gore-Tex Comfort Footwear and leather collar

LASTING BOARD: Teneré

ANATOMIC FOOTBED: Ground

SOLE: Asolo/Vibram Ground with MegaGrip compound (rubber-microporous)

MADE: in Europe

RESOLING: The model can get resoled

SUSTAINABILITY: Contains leather from a tannery rated by the Leather Working Group (LWG)



Best use: Lightweight shoe ideal for urban excursions and walks.

MAN A38026 00 B191
bottle green



MAN A38026 00 A608
shark-grey



MAN A38026 00 A551
dark brown



370
1/2 PAIR
8 UK



FIT
MM



SIZE
MAN
7-12,5 UK

UPPER: Water-resistant Nubuck mm 1,3-1,5

LINING: Gore-Tex Comfort Footwear and leather collar

LASTING BOARD: Teneré

ANATOMIC FOOTBED: Ground

SOLE: Asolo/Vibram Ground with MegaGrip compound (rubber-microporous)

MADE: in Europe

RESOLING: The model can get resoled

SUSTAINABILITY: Contains leather from a tannery rated by the Leather Working Group (LWG)



Best use: Lightweight shoe ideal for urban excursions and walks.

WOMAN A38029 00 B190
jeans-blue



WOMAN A38029 00 A89715
gerbera



WOMAN A38029 00 A608
shark-grey



WOMAN A38029 00 A415
sage



323
1/2 PAIR
5 UK



FIT
ML



SIZE
WOMAN
4-8 UK

UPPER: Water-resistant Nubuck mm 1,3-1,5

LINING: Gore-Tex Comfort Footwear and leather collar

LASTING BOARD: Teneré

ANATOMIC FOOTBED: Ground

SOLE: Asolo/Vibram Ground with MegaGrip compound (rubber-microporous)

MADE: in Europe

RESOLING: The model can get resoled

SUSTAINABILITY: Contains leather from a tannery rated by the Leather Working Group (LWG)

FIELD GV



Best use: Lightweight shoe ideal for urban excursions and walks.

MAN A38028 00 B191
bottle green



MAN A38028 00 A608
shark-grey



MAN A38028 00 A551
dark brown



380
1/2 PAIR
8 UK



FIT
MM



SIZE
MAN
7-12,5 UK

UPPER: Water-resistant Nubuck mm 1,3-1,5

LINING: Gore-Tex Comfort Footwear and leather collar

LASTING BOARD: Teneré

ANATOMIC FOOTBED: Ground

SOLE: Asolo/Vibram Ground with MegaGrip compound (rubber-microporous)

MADE: in Europe

RESOLING: The model can get resoled

SUSTAINABILITY: Contains leather from a tannery rated by the Leather Working Group (LWG)



FIT TECHNOLOGY

Man Size

CM	EU	UK	US
24	38	5	5 ½
24,5	38 ⅔	5 ½	6
25	39 ⅓	6	6 ½
25,5	40	6 ½	7
26	40 ⅔	7	7 ½
26,5	41 ⅓	7 ½	8
27	42	8	8 ½
27,5	42 ½	8 ½	9
28	43 ⅓	9	9 ½
28,5	43 ⅔	9 ½	10
29	44 ½	10	10 ½
29,5	45	10 ½	11
30	46	11	11 ½
30,5	46 ⅓	11 ½	12
31	47	12	12 ½
31,5	47 ½	12 ½	13
32	48 ⅓	13	13 ½
32,5	49	13 ½	14
33	49 ½	14	14 ½
33,5	50	14 ½	15
34	50 ⅔	15	15 ½
34,5	51 ½	15 ½	16
35	52	16	16 ½
35,5	52 ⅔	16 ½	17

FIT TECHNOLOGY

Woman Size

CM	EU	UK	US
22	35 ½	3	4 ½
22,5	36 ⅓	3 ½	5
23	36 ⅔	4	5 ½
23,5	37 ½	4 ½	6
24	38	5	6 ½
24,5	38 ⅔	5 ½	7
25	39 ⅓	6	7 ½
25,5	40	6 ½	8
26	40 ⅔	7	8 ½
26,5	41 ⅓	7 ½	9
27	42	8	9 ½
27,5	42 ½	8 ½	10
28	43 ⅓	9	10 ½
28,5	43 ⅔	9 ½	11
29	44 ½	10	11 ½
29,5	45	10 ½	12
30	46	11	12 ½
30,5	47	11 ½	13
31	46 ⅓	12	13 ½
31,5	47 ½	12 ½	14
32	48 ⅓	13	14 ½
32,5	49	13 ½	15
33	49 ½	14	15 ½
33,5	50	14 ½	16

ARGENTINA
Superfit S.r.l
C1107AAR Buenos Aires
Tel: 54 11 43340033
Fax: 54 11 43340033
luis@superfit1.com

AUSTRALIA
Intertrek Pty Ltd
Nsw 2069 Roseville
Tel: 00 61 2 9417 5755
Fax: 00 61 2 9417 5722
sales@intertrek.com.au

AUSTRIA
Pichler Manfred Sportartikel
Handel E.u. Ennsweg 8
5550 Radsradt - Austria
Tel: 0043-660 4620 999
asolo@sbg.at

BELGIUM / THE NETHERLANDS /
LUXEMBOURG
Technolyt B.V
Industrieweg 35
1521 NE Wormerveer
Tel: (0)75 647 45 47
www.technolyt.nl

CHILE
Diseño Tatoo Limitada
Jorge Hirmas 2560 Bodega B05 -
B06 Renca, Santiago
Tel: +56 2 25678085
Fax: +56 2 25678082
sales@tatoo.ws
www.tatoo.ws

CHINA
Inspires Trading Co. Ltd
100029 Beijing
Tel: 0086 10 82031670
Fax: 0086 10 82031663
chris_li@asolochina.cn
www.asolochina.cn

CZECH REPUBLIC
Sport Prima Spol. S.r.o.
Legionaru 3084/36
695 01 Hodonin
Tel: 00420 518 343 185
info@asolo.cz
www.asolo.cz

ECUADOR / BOLIVIA
Tager S.A.
Las Retamas E1-136 y Av Galo
Plaza Lasso
Tel: +593 2 2406526
Fax: +593 2 2406526
ext 102 Pichincha, Quito-Ecuador
Sales@tatoo.ws
www.tatoo.ws

FRANCE
Ricochet - Off Piste
325 Route Valparc 74330 Poisy
Tel: 0033 4 50 60 87 00
Fax: 0033 4 50 60 38 40
contact@ricochet.fr
www.ricochet.fr

GERMANY
Asolo GmbH
MOC München/Raum A134
Lilienthalalle 40 80939 München
Tel: +49 160 97710737
Tel: +49 89 32667061
Fax: +49 89 32667062
herbert.buczek@asolo.com

GREECE
MV TRADE GP
L. Kyknon 208
52100 Kastoria
Tel: 00 30 694 452 9649
info@mvtrage.gr

HONG KONG
Chamonix Alpine Equipment
Mongkog. Kln, Hong Kong
Tel: 00 852 23883626
Fax: 00 852 27707110
www.chamonix.com.hk

ICELAND
Drífa ehf - Icewear
Suðarhraun 10, 210 Garðabærr
Iceland
Tel: +354 555 7400
info@icewear.is
www.icewear.is

IRAN
Shirpala
Unit 2 , No.7, 6th St. , Mir Emad St. ,
Tehran-Iran
Tel: +98 21 88750430
info@shirpala.com
www.shirpala.com

ISRAEL
Kal Gav Trade Ltd
P.O.BOX 313 Gedera 7075301 Israel
Tel: 00972 8 869 2730
Fax: 00972 8 869 2733
info@kalgav.net

JAPAN
Mont-Bell
Nishi-ku Osaka
Tel: 0081 6 6531 4765
Fax: 00816 6531 4969
support@montbell.com

KOREA
AMG Titanium Co.
125, Ganam-Ro
Seo Gu Incheon
Tel: 0082 32 563 0038

LITHUANIA
Montis magia UAB
Konstitucijos pr. 12,
Vilnius LT-09308
Tel: 00 37069952012
info@montismagia.lt
www.montismagia.lt

MALTA
Adventure Camping Shop Co. Ltd
Dun Karm Street, B'Kara Bypass,
c/w Giovanni Papaffy,
Birkirkara, BKR 4021
Tel: 00356 21443386
Fax: 00356 21443386
Mob: 00356 99263668,
nico@adventureshop.mt
www.adventureshop.mt

REPUBLIC OF MOLDOVA
X-Style Outdoor Equipment Center
Tricolux S.r.l.
MD-2005, Chisinau, Bd. Grigore
Vieru, 27
Tel: 00 373 22 210050
info@xstyle.md
www.xstyle.md

NEW ZEALAND
Outsider Mountain Sport
24A Albert Street Rangiora 7440 -
North Canterbury
Tel: 0064 3 3106401
Fax: 0064 3 3106402
office@oms.co.nz

NORWAY
Nordly Sport AS
Jossiasvegen 6, 7513 St Jordal
Tel: +47 91382829
www.nordlyssport.no

PERU
Diseños Tatoo Perú S.R.L
Calle Burgos 215, San Isidoro,
15076 Lima, Perú
Tel: +51 1 2210515
Sales@tatoo.ws
www.tatoo.ws

POLONIA
Summit
UL. Kosciuski 10, 40049 Katowice
Tel: +48 (32) 251 36 57
summit.asolo@gmail.com

RUSSIA

Kaht Sport Club Russia
115230, Moscow,
Electrolitnij proezd, d.7, korp 2.
Tel: 007 495 604 1021
Fax: 007 499 317 9806
sckant@kant.ru
www.kant.ru

SLOVAKIA

Sport Prima SK Spol. s.r.o.
82107 Bratislava
Tel: 00421 944 111 011
info@asolo.sk
www.asolo.sk

SLOVENIA

Alpvent D.O.O.
Dobravecška Ulica 49, 4226 Ziri
Tel: 00386 451 91 533
Tel: 00386 51 411 040
outdoor@alpvent.com

SPAIN / ANDORRA

Carving Sport SL
22710 Castiello de Jaca
Tel: 0034 97 4363490
Fax: 0034 97 74364565
info@carving-sport.com

SWITZERLAND

Contact & Production SA
Via Santuario, 1
CH-6644 Orselina
Tel: +41 91 751 61 32
Tel: +41 79 872 43 55
www.contactproduction.ch

TAIWAN

Metroasis CO. LTD
No.169-1, Sec. 1, Kangle Rd.,
Xinfeng Township, Hsinchu County
304 Taiwan (R.O.C.)
metroasis.service@gmail.com
www.metroasis.com.tw

THAILAND

Outdoor Plus Co. Ltd
4/373 Soi Serithai 57, Klongkum
Buengkum, 10240, Bangkok
Tel: +66 87-905-1888
pupharikul@gmail.com
kittiphath@thailandoutdoor.com

TURKEY

Kutupayisi LTD STI
Bahcelievler/ Istanbul
Tel : 0090 212 2 430430
Fax: 0090 212 2 517800
info@kutupayisi.com

UKRAINE

Shambala Company
49000 Dnepropetrovsk
Tel: 0038 056 3702401
Fax: 0038 056 2323474
info@shambala.dp.ua

ASOLO UK

Asolo Footwear UK Ltd.
jez.portman@asolo.com

U.S.A / CANADA

Asolo USA Inc.
10 Benning Street, Suite 160 #251
West Lebanon NH 03784-3402
Tel. 603-448-8827
Fax: 603-448-8873
asolo@asolo-usa.com
www.asolo-usa.com

ASOLO Srl

Via delle Industrie 2, 31040 Nervesa
della Battaglia, Treviso – Italy
Tel: +39 0422 8866
Fax: +39 0422 885282
asolo@asolo.com
www.asolo.com

LAZIO / CAMPANIA /

**MOLISE / ABRUZZO /
MARCHE / UMBRIA**
Flies di Diego Imperoli S.a.s
Tel: 347 9025437
fliesimperoli@gmail.com

LIGURIA

Guaragno Roberto
Tel. 010 6456134
Cell. 335 1039709
roberto.guaragno@gmail.com

LOMBARDIA

Biebi S.r.l.
Tel: 035 315131
Tel: 393 3360161 Biroli Marco
Tel: 393 3320118 Biroli Michele
biroli.michele@gmail.com
birolim61@gmail.com

PIEMONTE / VALLE D'AOSTA

Sport & Fun Snc
Tel: 011 6633937
Fax: 011 6634778
Tel: 335 350552 Lino Urbano
Tel: 335 5795791 Matteo Gambino
sportfunsncc@gmail.com
sportfunsncc@virgilio.it

SARDEGNA

Daniele Del Furia Rappresentanze
Tel: 070 8877679
Fax: 070 821127
Cell: 335 8262395
danieledelfuria@tiscali.it

SICILIA

Alfredo Nicotra Rappresentanze
Tel: 095 3528538
Fax : 095 335774
Cell : 348 6131954
nicotra.alf@tiscali.it

**TOSCANA / EMILIA ROMAGNA /
SAN MARINO**

Division di Simone Sardellini
Toscana:
Tel: 338 9044696 Simone Sardellini
Tel: 349 5272481 Francesco Masoni
sardellini@icloud.com
f.division@hotmail.com
Emilia Romagna/San Marino:
Tel: 335 5930376 Davide Baraldi
Tel: 346 6671202 Andrea Orlandini
dbaraldi65@gmail.com
andrea.flamboiant@gmail.com

TRENTINO

**ALTO ADIGE / VENETO /
FRIULI VENEZIA GIULIA**
Ross & Ross Snc
Tel: 0461 860288
Tel: 335 283870 Giuseppe Rossati
Tel: 335 326062 Augusto Rossati
rossati@tin.it
augustoross@outlook.it

