

Rec Zone Winter '20-'21

SPRINGDALE PARKS & RECREATION

**WINTER BASKETBALL SET
TO TAKE THE COURT**



City Dog Parks open daily –Page 2

Springdale Trail System –Page 3

Disc Golf Courses –Page 5

Springdale Recreation Center information --Page 7

Bring your pooch to the **Springdale Dog Parks**

OPEN DAILY! 6 a.m.-10 p.m.
at C.L. "Charlie" and Willie George Park
and Randal Tyson Recreational Complex



**Two fenced playgrounds
for large and small dogs**



SPRINGDALE[™]
PARKS & REC

SPRINGDALE TRAIL SYSTEM



Photo Courtesy of TrailForks.com

Springdale has some of the most beautiful trails and pathways in Northwest Arkansas. The best part of the Razorback Greenway runs through Springdale, between downtown and Lake Springdale. The trail system also has some of the best mountain biking in the region.

The City is working on expanding our trail system and connecting all parts of the city in the future. Currently, the Dean's Trail is under construction and portions will begin to open in the near future.

The City of Springdale has updated its comprehensive Master Trail Plan. The expanding trail system will provide access from local neighborhoods to schools, parks, businesses, and downtown destinations.

Points of Interest

Specific points of interest include the Lake Springdale trailhead, Sanders trailhead, Fitzgerald mountain bike trailhead (adjacent to Bayyari Park), Jones Center, Shiloh Museum, Arts Center of the Ozarks, and Downtown Springdale.

Connects to Adjacent Communities

The Razorback Greenway, a regional trail system, provides connections to adjacent communities.

Transportation & Recreation

The expanding trail system will continue to provide alternative transportation and recreational opportunities to the citizens and visitors of Springdale.

Trails Committee

The Springdale Trails Committee is focused on expanding the city's trail system and representing the interests of trail users in the city.

The Committee meets at 4 p.m. on the third Wednesday of each month in the multipurpose room at 201 Spring St. To stay up to date on trail meetings, please check out our calendar at www.springdalear.gov/calendar.aspx

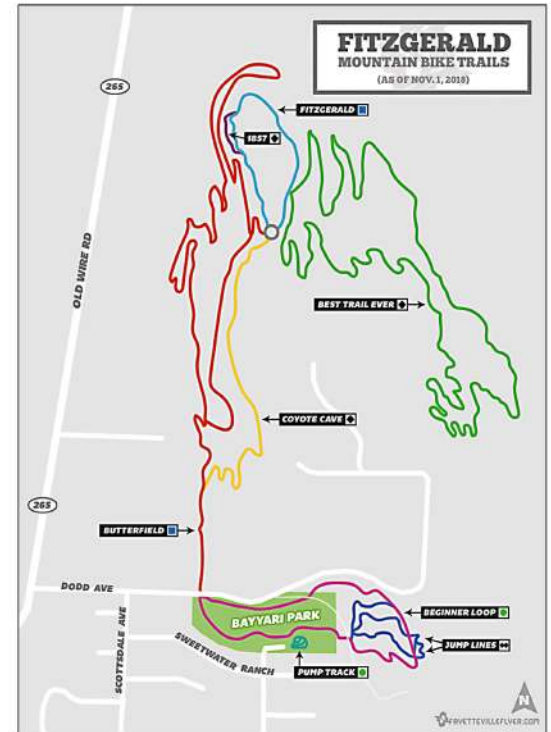
You can also go to our website for additional details on the trails and pathways at www.springdalear.gov/800/

More Information

For more information about the Trail System or Committee, please contact the Springdale Parks & Recreation Department at 479-750-8185.

Report any trail issues or concerns by email to ParksAndRec@springdalear.gov.

Continued growth: Newest Projects



Fitzgerald Station Trailhead

Located off of Highway 265 on Dodd Ave. This trailhead serves as access to the Fitzgerald Mountain Bike Trail System and overflow parking for Bayyari Park. Fitzgerald Mountain Trail System was funded by the Walton Family Foundation and features 10 miles of soft surface trails to accommodate beginner level hiking to advance biking. It truly has something for all outdoor enthusiasts.



Deans Trail

When Dean's Trail is completed, it will be a five-mile lighted trail/alternative transportation route along the east side of Springdale beginning at the Jones Center. It will connect the Shiloh Trail to Lake Fayetteville, and it will end at a connection to the Fayetteville trail system. Phase 1 was officially opened in May, 2018.



Free-to-play Courses offered at JB Hunt Park

Play either of two courses at your leisure, open year-around, all day. No fees. No tee times. Located at JB Hunt Park, 955 Fleming Drive.



What's Offered

- An 18-hole 12.5-acre all-terrain course
- An 9-hole 6.7-acre all-terrain junior course
- Yardage markers at each hole for easy navigation
- Dynamic Discs is a fully stocked pro shop on site for all your equipment needs
- A paved parking lot

Contact **Dynamic Discs**
NW Arkansas at (479) 365-7997,
Facebook, or their website at
DynamicDiscs.com for future
tournament dates



Join the Springdale Recreation Center



Springdale's Parks and Recreation Department is in full operation at it's Recreation Center Facility, located at 1906 Cambridge St.

Follow us on Facebook and on our website at Springdale.recdesk.com as we will provide updates on events.

Phone Number:
(479) 750-8185

Hours of Operation:
Monday-Friday: 7 AM-9 PM
Saturday: 8 AM-1 PM
Sunday: 3 PM-7 PM

Annual Membership Cost:

- 18 and under- \$25
- 19 to 54- \$50
- 55-69- \$30
- 70 and over - Free!
- Family- \$100
- Military- Free!

Amenities Include:

- Exercise area
- Court rentals
- Multipurpose room rental
- Green/Yellow bag sales
- Senior Center Taxi service to our facility



Staff Directory ... Who to ask for?

(479) 750-8185

Chad Wolf

General Parks and Recreation Questions

Matt Boykin

Athletic Director and Programming Questions

Zach Walls

Field Rentals and Parks, Trails Questions

Ryan Marsh

Soccer, Football, Tennis and Disc Golf Questions

Kayleigh Dockery

Youth & Unified Softball, Basketball, Volleyball Questions

Ryan Ward

Youth Baseball Questions

[SPRINGDALE.RECDESK.COM](http://Springdale.recdesk.com)

Tanner Spangler

Adult Soccer and Sports Camps/Clinics

Vernon Tarver

Special Events and Marketing Questions

Erin Blount

Recreation Center Events/Rentals Questions

Shelly Schneider

Concession Stand Questions

SPRINGDALE PARKS & REC

MURPHY PARK



This 40-acre site offers several recreational features:

- Pond (3 Acres). Open to fishing with rod or pole only (Large mouth bass must be released immediately; Catfish daily limit is 3; Trout daily limit is 5; Bream daily limit is 25)
- 1 Sand Volleyball Court ■ Play Structure
- Separate Swing Set
- 2 Covered Pavilions ■ 39 Individual Picnic Tables
- Outdoor 0.75 Mile Paved Trail

501 S Pleasant St.



The Murphy Park Pavilions are available for use, in accordance with social-distancing guidelines.

Get more info at Springdale.Recdesk.com



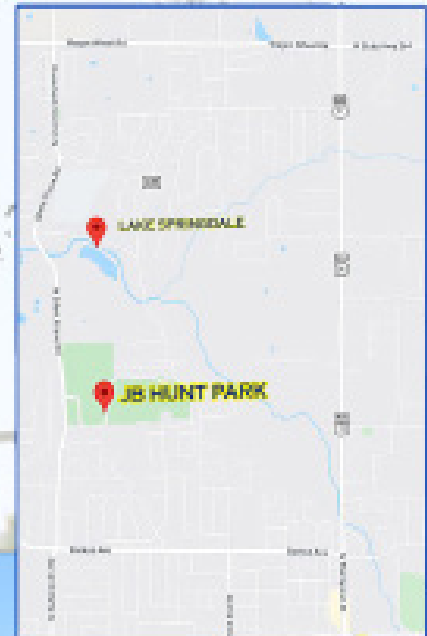
JB Hunt Park

955 Fleming Drive

JB Hunt Park sits on a 200-acre site which features Lake Springdale and offers various recreational features, such as:

- 2 Adult Softball Fields
- 2 Play Structures With Wood Chip Fall Zones for Ages 5-12
- 2 Separate Swing Sets
- 4 Youth Fast-Pitch Softball Fields With Concession Stand
- Two Paved Trails
- 18-Hole Disc Golf Courses
- Mountain Bike Trail
- Pump Track

The JB Hunt Park Pavilions are available for use, in accordance with social-distancing guidelines.



Get more info at Springdale.Recdesk.com

SPRINGDALE PARKS & REC

C.L. "Charlie" & Willie George Park

Features: ■ Baseball/Softball Fields ■ Lighted Football Field ■ Lighted Soccer Fields ■ Lighted Tennis Courts ■ Pavilion/Restrooms ■ Trails ■ Electricity

4023 Hylton Road

Amenities: ■ 4 Artificial Turf Baseball Fields With Concessions n Dog Park ■ Paved Walking Trail ■ 2 Pavilions ■ Play Structures ■ Splash Pad (Temporarily closed due to COVID-19)

The George Park Pavilion is available for use, in accordance with social-distancing guidelines.



Get more info at Springdale.Recdesk.com



Randal Tyson Rec Complex

Amenities:

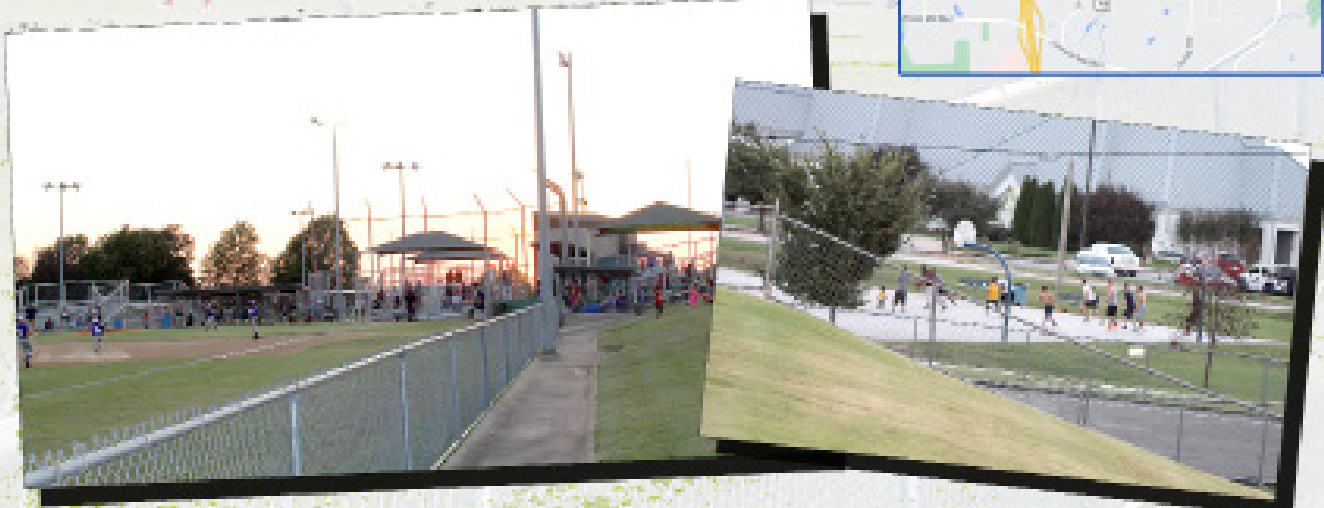
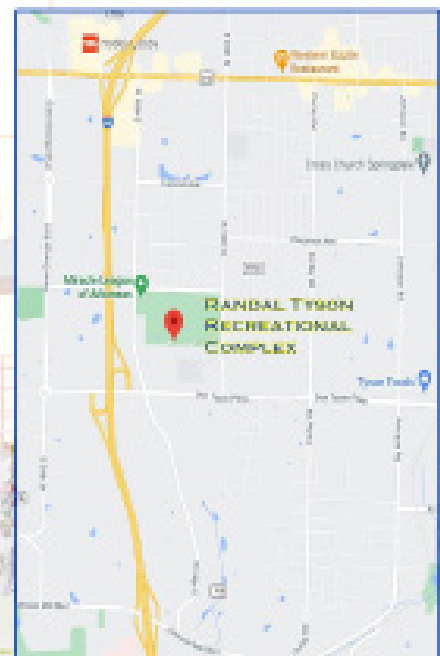
This recreation complex offers the following amenities:

- 0.75 Mile Paved Trail ■ 1 Sand Volleyball Court
- 1 Separate Swing Set ■ 2 Miracle League Fields for People With Disabilities ■ 3 Adult Softball Fields ■ 3 Babe Ruth Baseball Fields
- Concession Stands ■ 3 Horseshoe Pits ■ 3 Play Structures
- 4 Basketball Goals ■ 4 Little League Baseball Fields
- 5 Soccer Fields ■ 6 Lighted Tennis Courts

Pavilions:

The Tyson Park Pavilions are available for use, in accordance with social-distancing guidelines

303 Watkins Avenue



Get more info at Springdale.Recdesk.com



Bayyari Park

2300 Deer Valley St.

JB Features:

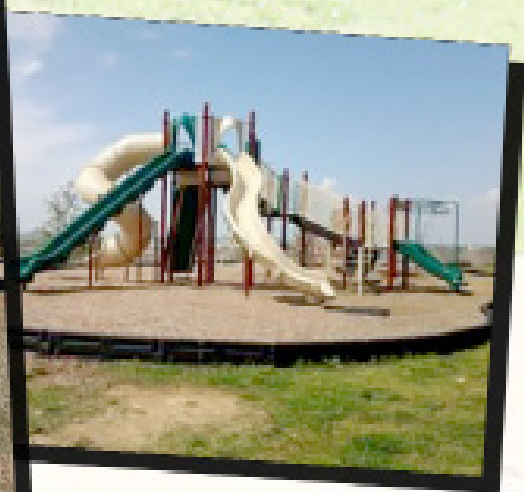
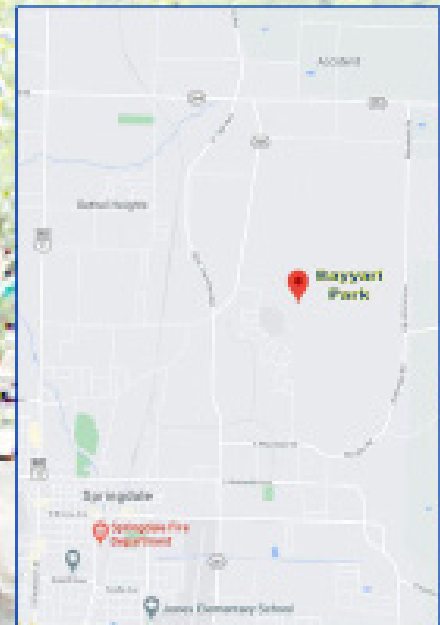
- Pavilion ■ Trails ■ Picnic Areas (Tables) ■ Playground
- Restrooms ■ Grill ■ Electricity

Amenities:

Bayyari Park is a 15-acre site offering the following amenities:

- Access to 10.7 miles of mountain biking
- 1 Playground With Wood Chip Fall Zone for Ages 5-12
- 1 Separate Swing Set ■ 3 Covered Picnic Tables
- Pavilion With Picnic Tables ■ Restroom ■ Picnic Areas

The Bayyari Park Pavilion is available for use, in accordance with social-distancing guidelines



Get more info at Springdale.Recdesk.com



Luther George Park

Features:

- Trails ■ Play Structures ■ Picnic Tables ■ Playground
- Restrooms ■ Grill ■ Electricity

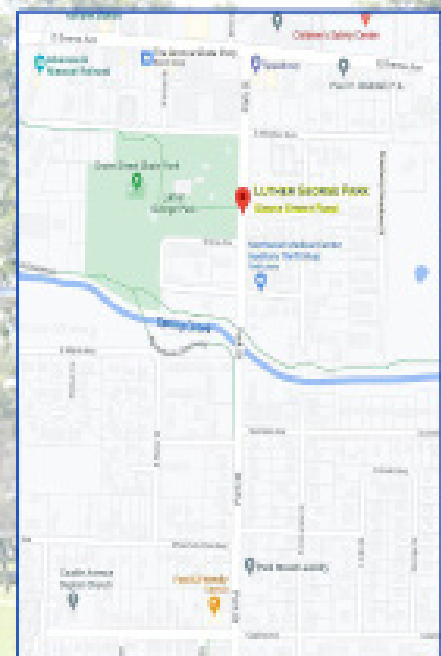
Amenities:

Luther George Park is a 10-acre site offering the following amenities:

- 0.25 Mile Paved Walking Path (5' Wide Concrete Loop)
- 1 Pavilion With Picnic Tables ■ 1 Skate Park With Half-Pipe, 2 Quarter Ramps, and One Centerpiece
- 15 Picnic Tables (Uncovered) ■ 2 Restroom Facilities
- 4 Spring Loaded Animal Seats ■ 6 Covered Picnic Tables
- 8 Individual Play Structures With Wood Chip Landing Zone

The Luther George Park pavilion is available for public use, in accordance with social-distancing guidelines.

300 Park Street



Get more info at Springdale.Recdesk.com



Bobby Hopper Park

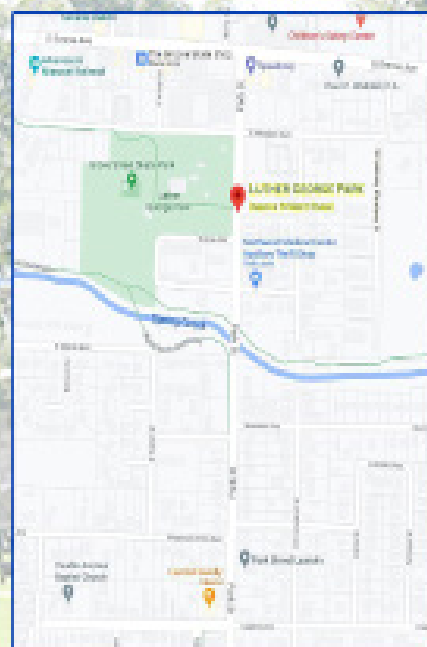
Features:

■ Pavilion ■ Playground ■ Soccer Field ■ Restrooms

Pavilion:

The Bobby Hopper Park Pavilion is available for use, in accordance with social-distancing guidelines.

981 E. Huntsville Ave.



Get more info at Springdale.Recdesk.com



Forrest Bowen Park

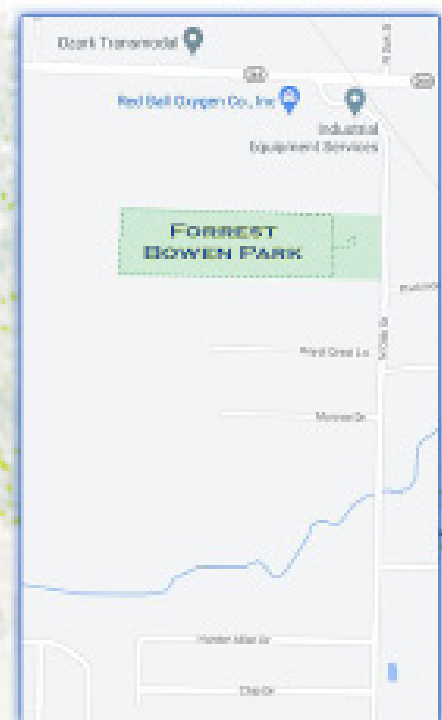
Amenities:

Forrest Bowen Park was recently acquired by the City of Springdale from the consolidation of Bethel Heights. The park includes:

- Large play area equipped with swings ■ Slides
- Sand volleyball court ■ Spring motion equipment.

The park is also equipped with fitness/workout equipment, a horseshoe pit, as well as a half-mile walking trail. There is a large pavilion with picnic tables and bar-b-que grills, which is for the public use.

4322 N. Oak Street



Get more info at Springdale.Recdesk.com

SPRINGDALE REC CENTER

Annual Memberships

17 and under - \$25

18 to 54 - \$50

55-69 - \$30

70 and over - Free!

Family - \$100

Military - Free!

Become a Member!!

JOIN TODAY!!