

Let's Build a Smarter, Safer, More Sustainable Tomorrow, Together.

Turtle is a leading electrical and industrial distribution, logistics, and supply chain solutions provider united by a singular mission to Rethink Energy and Advance Tomorrow.

TRUST EARNED. SINCE 1923.

We have over 100 years invested in the people, processes, technologies and relationships needed to ensure our customers' success.

DELIVERING TODAY. ADVANCING TOMORROW.

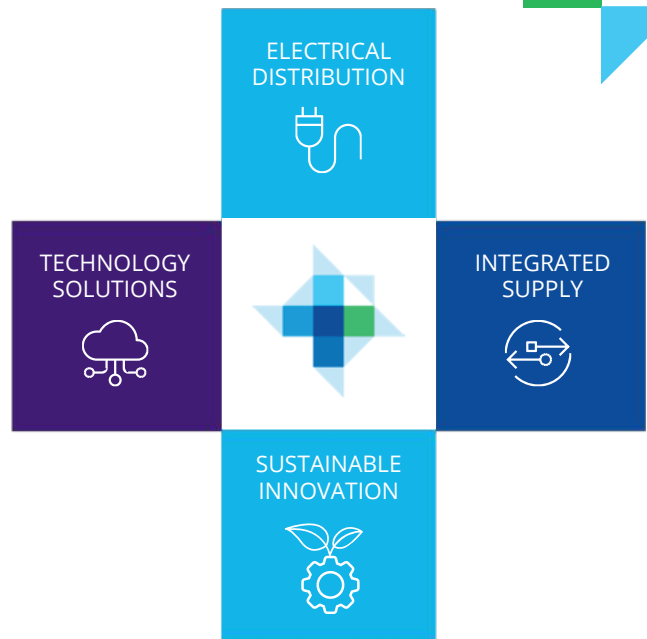
Our combination of services delivers the mission-critical solutions you need today and gets you ready to meet the high-stakes challenges of tomorrow.

RADICAL COLLABORATION. EXCEPTIONAL VALUE.

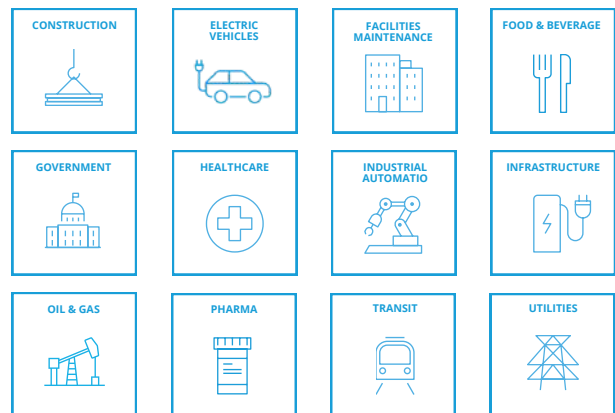
Our unique, independent ownership structure allows us to operate with the radical collaboration of \$1B startup.

Woman-Owned & Operated

100% of Purchases from Turtle is Diversity Spend.



Turtle's holistic model delivers custom solutions across multiple industries.



Over 100 years invested in Rethinking Energy & Advancing Tomorrow.

Turtle Engineering and Technology Services:

- Energy Management
- Intelligent Automation
- Construction Management
- Electric Vehicle Solutions
- Integrated Supply
- Technology Services
- Infrastructure Modernization
- Panel Shop
- Safety & Emergency
- E-Procurement
- Materials Management



4th
Generation
Family-Owned
EST. 1923



Largest
Certified Woman-
Owned Electrical
Distributor
US, Canada
& Mexico



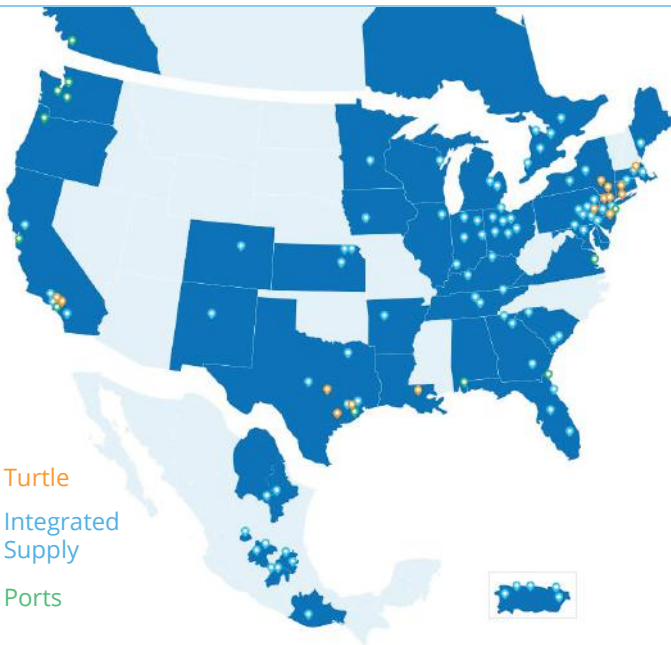
1923
Founded
in NYC
Headquarters
in Clark, NJ



Excellent
NPS Rating
Past 6 Years



**Energy Transition
Leadership**
Silver Ecovadis
Sustainability Rating
Top 16th percentile



National Reach, Local Services

Distribution Centers

- Somerset, NJ
- Houston, TX
- Los Angeles, CA

Integrated Supply

- 24 states
- Puerto Rico
- Mexico
- Canada

Regional Locations

14 U.S. Locations

- New Jersey
- New York
- Massachusetts
- Connecticut
- Pennsylvania
- California
- Texas
- Louisiana

International Reach

- Middle East
- Africa
- Europe
- Canada
- Mexico
- Lucayan Archipelago

Turtle Corporate Headquarters: 100 Walnut Ave., 4th Floor, Clark, NJ 07066 | Contact: P. 732 574 3600

Privately-Held (family-owned)

DUNS: 001713437 | CAGE: 7N067 | SAM.GOV REGISTERED DD FORM 2345 | WWW.TURTLE.COM

