

WHEELER[™]
FLEET SOLUTIONS
Air Disc Brake Catalog
BY
A-LINE



| Uptime Delivered

wheelerfleet.com | 866.439.2329

FRICITION OPTIONS

DIFFERENT LOADS REQUIRE DIFFERENT STOPPING POWER



SAFER BRAKING, LONGER LIFE

Not all heavy-duty vehicles, loads, or drivers are the same. The A-Line KZ-Series of air disc pads are engineered with three different friction types to meet your needs. A-Line pads are built with a proprietary StrataBond® shear strength technology. The secret to improved shear strength lies with stratified layers of encapsulated mechanical retention systems (EMRS), phenolic resin-based adhesive, a 3mm deep high-resin stabilizing layer, topped with a high-torque, low noise friction layer. This improves shear strength up to 240% for high-torque applications.

STRATABOND®

FOR SUPERIOR SHEAR STRENGTH

Micro-abrasive burnishing strips seats pad to the Rotor for perfect brake geometry, noise reduction, vibration and extended brake life.

Low-noise, high-torque formulation cross links into Friction Stabilizing Layer.

Special high resin, high fiber Friction Stabilizer Layer is engineered to bond with the adhesive.

Phenolic resin-based thermal-set adhesive bonds the Retention System to the Friction Stabilizer Layer.

Half hole and mesh Encapsulated Mechanical Retention System (EMRS) provides anti-shear stability.



Air Disc Brake Pad Options

KZ2 Heavy Duty Brake Pads

For vehicles with a GAWR of 20K to 23K

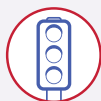
- Low noise over the road pads withstands high heat applications
- Formulated with Kevlar® fibre that is known for its ability to withstand extreme pressure
- Independent laboratory testing shows that KZ2 pads last 33% longer than competing pads
- Ideal for tractor, trailer and school bus applications



Flat Terrain



Hilly Terrain



Stop-and-Go

KZ3 Premium Duty Brake Pads

For vehicles with a GAWR of 23K

- Formulated with High Thermal Fibers (HTFs) and Modified Crosslinking Resins (MXRs) endure the rigors of severe duty applications.
- In independent laboratory testing, KZ3 pads last longer, run cooler and withstand up to 240% more shear force than competing pads
- Ideal for tractor, trailer, refuse, cement haul and motor coach applications



Flat Terrain



Hilly Terrain



Stop-and-Go

KZ6 Severe Duty Brake Pads

For vehicles with a GAWR of 26K

- Resilient Graphite Carbon (RGC) fibers withstand higher temperatures, torque loads and last 40% longer than competing pads.
- Superior Stopping Distance: over 10% shorter than federal standards
- 25% lower rotor temperatures & 18% longer rotor life
- Ideal for tractor trailer heavy haul, refuse, cement haul, motor coach, and transit applications



Flat Terrain



Hilly Terrain



Stop-and-Go



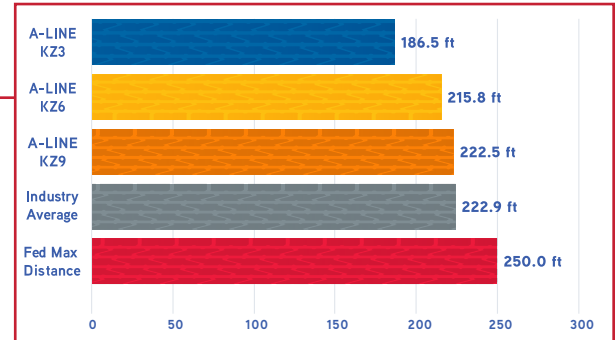
Mountain Terrain

I Uptime Delivered

A-Line K-SERIES Reduced Stop Distance

FMVSS dynamometer tests show that A-Line air disc pads have a predictive stop distance as low as **186.5 ft.**

All KZ series frictions are precisely engineered to produce shorter stop distances without sacrificing pad integrity.



How To Order The Right Pad

ALP1203

-KZ3

ALP1203-KZ3

A-Line
Base #

+

Friction
Grade

=

Completed Part Number

A-Line Base #	Friction Grade Options			FMSI#	WVA#	Abex	Bendix / Knorr Bremse	Meritor	Fras-Le	Caliper MFR. / Model
	Heavy Duty 22,000 GAWR	Premium 23,000 GAWR	Severe 26,000 GAWR							
ALP1311		-KZ3	-KZ6	D1311	29187	ADB1311		2252H2BA, 2252H2DA, 2252H2CD, 2252H2CE, MMD1311AF	ESD1311	Meritor EX225 H2
ALP1369	-KZ2	-KZ3	-KZ6	D1369	29158	ADB1369	K070796, K129272, K129274, K109113	MMD1369AF	ESD1369	Bendix, Knorr ADB22X, ADB22X-LT, SK7
ALP1370		-KZ3	-KZ6	D1370	29189			2252L2DA, 2252L2CD, MMD1370AF	ESD1370	Meritor EX225 L2
ALP1438		-KZ3		D1438	29126, 29159	ADB1438		12-999-737VT, MMD1438AF		WABCO Pan 19-1
ALP1518		-KZ3		D1518	29088	ADB1518		12-999-703VT, MMD1518AF	ESD1518	WABCO Pan 17
ALP1708		-KZ3	-KZ6	D1708	29174, 29219, 29204, 29218, 2922	ADB1708		22120795, 2252HBMA703, KIT2252HBMA9500, KIT2252HBM7400	ESD1708	Meritor ELSA 225-3
ALP9007		-KZ3	-KZ6	D1777	29162			12-999-796, MMDW- P22AF		WABCO Pan 22-1
ALP9007A		-KZ3	-KZ6	D1777	29162					WABCO MaxxUS 22, Maxx 22T

Rotor OPTIONS

DURABLE OPTIONS FOR SAFER BRAKING



Durable Engineering for Safer Braking

A-Line air disc rotors are engineered to meet the highest OE standards for durability and dependability under the most demanding conditions on the road. Every rotor is built with proprietary alloys that exceed the OE standard of ASTM G3500b grey iron for the precise balance of tensile strength, heat dissipation characteristics, and thermal wicking. Every A-Line rotor is finished with computer-controlled parallel milling and balancing. Parallel milling cuts both faces of the rotor simultaneously to a tolerance of 20 microns or .00078". This precision milling eliminates disc thickness variation (DTV) that can cause brake judder.

GeoMet® Corrosion Protection

A-Line Rotors extend Rotor life and prevent corrosion with GeoMet® 360 protected coating. This blend of zinc and aluminum oxides interlace and bind to the metal surface so that they are four times more corrosion resistant than zinc-only coatings. Applied in layers of eight to 10 microns thick, the coating resists over 30 natural and synthetic corrosives, including: Acid Wash, Brake Clean, Gasoline, Alcohol, Brake Fluid, Kerosene, Ammonia, Calcium Chloride, Magnesium Chloride, Antifreeze, Diesel, and Road Salt.



Uncoated Rotors leave the ABS ring and vents vulnerable to rusting. This results in ABS sensor faults, and clogged vents that overheat Rotors. Such corrosion causes premature replacement of the Rotor, and increases maintenance costs.



A-LINE GeoMet coated Rotors protect the ABS ring and vents. ABS rings will not fault due to corrosion and vents will remain unclogged from rust and run cooler. This extends Rotor and pad life and reduces maintenance costs.

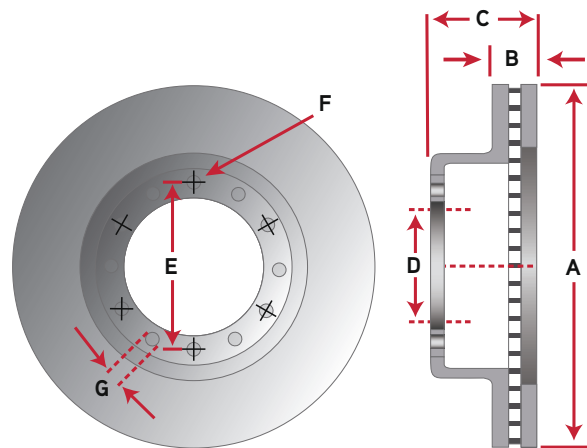
A-LINE Part#	OE Part#	Bendix	Durabrake	Meritor	Webb	Wabco	Hemdrickson	Style	ABS
ATR325148173	G0795180000, CT826		75180	M44AD75180	55030PK-65	CT826	S-33391	U	Cast
ATR377163220	CT832		71601	M44D71601	55031PK-65	CT832	S-33389-1	UL	Cast
ATR415150219	6629056112		76901	M44D76901	55035P	6629056112	S-34471	UL	Bolt on
ATR430053000	10084701, 10016195		76801	M44D76801	56092PK		S-36661	F	Bolt on
ATR430138220	802081, K038573	802081, K038573	76618	M44D76618	56096P			UL	No
ATR430150220	CT807		76613	M44D76613	55032PK-65	CT807		UL	Cast
ATR430150220-1	R6206M		76810	R44D6206				UL	Cast
ATR430150220-2	802082, K038574, K110358	802082, K038574	76617	M44D76617	56095P		S-32193	UL	No
ATR430160207	10020682, 10020109			M44DH20682				UL	Cast
ATR432045000-1	802569	802569, 802083	76692	M44D76692				F	No
ATR433131217	68326014		56641	68326014	54220P			H	No
ATR434045999	20428193, 8513803, 8510496		76990	M44D76690				F	No

Rotor Identification

Rotor manufacturers use different part numbers, and vehicle manufacturers may use several different Rotors for one application. Follow these steps to find your Rotor.

Measure the following:

- A:** Outside Diameter across the face of the disc
- B:** Rotor Thickness (Minimum is stamped on Rotor)
- C:** Overall Rotor Depth
- D:** Pilot Diameter
- E:** Bolt Circle Diameter measured from center of bolt holes
- F:** Bolt Hole Size and Count
- G:** Note Rotor style and ABS ring configuration
(Some Rotors will have same measurements but different style)



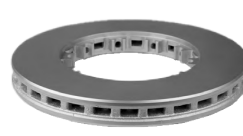
Rotor Styles



UL-STYLE



U-STYLE



F-STYLE



H-STYLE

ADB Model / Application	A		B		C	D	E	F		G
	Outside DIA.	Disc Thickness New	Disc Thickness Min.	OA Rotor Depth	Pilot DIA.	Bolt Circle	Bolt Holes Size	Bolt Holes Number	Weight Lbs	
Wabco Pan 17	325.12mm	34mm	28.25mm	148.59mm	173mm	196.09mm	M14 - 2	8	42	
Wabco Pan 19	376.94mm	45mm	39mm	163.58mm	220mm	249.43mm	M16 - 2	10	61	
Wabco Maxx22T	415mm	43mm	40mm	150mm	219mm	249.5mm	M16 - 2	10	70.55	
Meritor EX225L2 Wabco Pan 22	430mm	45mm	37mm	53mm	220mm	199.64mm	0.625 - 18	10	59.5	
Bendix, Knorr ADB22X, ADB225	430mm	45mm	37mm	138.3mm	220mm	250mm	0.625 - 11	10	74.5	
Wabco Pan 22	430mm	45mm	39mm	150mm	220mm	249.5mm	M16 - 2	10	71	
Haldex DB22 and DB22LT	430mm	45mm	41.4mm	150mm	219.71mm	249.5mm	0.625 - 11	10	74.5	
Bendix, Knorr ADB22X	430mm	45mm	37mm	150mm	220mm	250mm	0.625 - 11	10	86.2	
EX225L2	430mm	45mm	39mm	160mm	207mm	286mm	M16 - 1.5	10	89.65	
ABB22X	432mm	45mm	37mm	45mm	220mm	N, A	N, A	10	59.5	
EX225 H2	433.83mm	45mm	37mm	131.06mm	217mm	168mm	.75 in	12	80	
Volvo 9700 Vented with Hardware ELSA225-3	434mm	45mm	37mm	45mm	249.23mm	274.63mm	24 Spline	24 Spline	55	

CALIPER OPTIONS

DURABLE OPTIONS FOR SAFER BRAKING

Quality is Integral in Every A-LINE® Air Disc Caliper

We pride ourselves on the high quality manufacturing processes used to produce the industry's best new and remanufactured air disc calipers. More than four dozen individual parts are weighed, measured and specified to proprietary standards for metal hardness, temperature thresholds, and flexibility.



All A-Line calipers are reman under ISO-observant processes and undergo a 30-point quality function test. This ensures that our customers receive the highest quality air disc calipers, to keep their fleets on the road and free from unnecessary downtime.

How To Order The Right Caliper

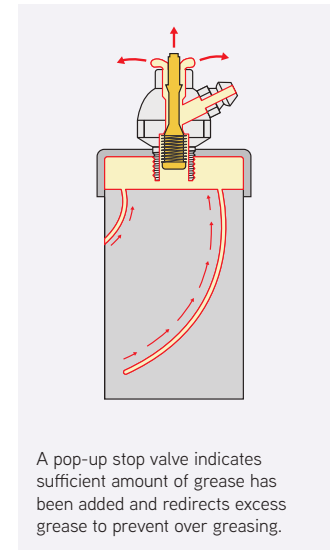
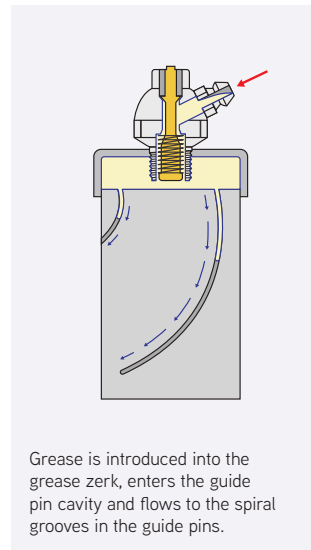
ATC	+	-AD2	+	-001	+	NU	=	ATC-AD2-001NU
A-Line Base #		Caliper Style		LH (Odd #) or RH (Even #)		Caliper Type		Completed Part Number

THE PARAMAXX™ SOLUTION

Paramaxx™ is continuous lubrication upgrade installed in new and select reman A-Line calipers. This upgrade consists of a full OE-Grade guide pin kit (**CL-20**) which includes:

- A. Sealing cap with integrated hydraulic stop valve
- B. Radial grooved guide pins
- C. A Lubrication Directional Plug
- D. High thermal resistant silicon rubber guide pin boots.
- E. Max-A-Sil 998 caliper grease used on the guide pins and all internal moving parts

Paramaxx™ is designed to combat premature guide pin failure and excessive heat temperatures with long-lasting lubrication across the face of the guide pin bushings. This engineered system provides up to 20 times more lubrication than OE-designed kits throughout the life of the caliper.





Enhanced Guide Pins

The guide pins have been engineered with three radial grease grooves to provide grease along the full face of the bushing and pin.

High Temp Guide Pin Boots

Withstands temperatures of 300°C (572°F). That's double the temperature of some OE boots

Aluminum Lubrication Plug

Fills the guide pin radial grease grooves to prevent excessive grease and gas-locks in the caliper boots.



Guide Pin Seating Caps

Integrated hydraulic stop valve allows grease to be introduced into the guide pins during Preventive Maintenance (PM) cycles, while avoiding over-greasing.

MAX-A-SIL 998™ Disc Caliper Grease

Engineered for higher heat loads generated in Air Disc Brake application.

BENDIX/KNORR STYLE CALIPERS

A-Line Part#	Caliper Type	Position	Caliper Style	Application	OE Number	Bracket Description
ATC-AD2-001U	Reman Caliper W/ ParaMaxx Upgrade	Right Hand	Knorr SK7, Axial 0 degrees	SAF Holland 2009-2017	5400101100, 03080005901Z, K012341 K012633K50	2 holes each side, 2 bars, axial mount
ATC-AD2-002U		Left Hand				
ATC-AD2-003NU	New Caliper W/ ParaMaxx Upgrade	Right Hand	Bendix ADB22X, Axial 0 degrees	Hendrickson Axles 2009 - 2017	802984, K113887X S-29152-14	3 holes each side, 2 bars, axial mount
ATC-AD2-003U	Reman Caliper W/ ParaMaxx Upgrade					
ATC-AD2-004NU	New Caliper W/ ParaMaxx Upgrade	Left Hand				
ATC-AD2-004U	Reman Caliper W/ ParaMaxx Upgrade					
ATC-AD2-005NU	New Caliper W/ ParaMaxx Upgrade	Right Hand	Bendix ADB22X, Axial 12 degrees	All tractors except Freightliner & Western Star	K081142, K109961X	3 holes each side, 1 bar, axial mount
ATC-AD2-005U	Reman Caliper W/ ParaMaxx Upgrade					
ATC-AD2-006NU	New Caliper W/ ParaMaxx Upgrade	Left Hand				
ATC-AD2-006U	Reman Caliper W/ ParaMaxx Upgrade					
ATC-AD2-007NU	New Caliper W/ ParaMaxx Upgrade	Right Hand	Bendix ADB22X, Axial 12 degrees	Freightliner, Western Star	K081256, K109957X	3 holes each side, 1 bar, radial mount
ATC-AD2-007U	Reman Caliper W/ ParaMaxx Upgrade					
ATC-AD2-008NU	New Caliper W/ ParaMaxx Upgrade	Left Hand				
ATC-AD2-008U	Reman Caliper W/ ParaMaxx Upgrade					
ATC-AD2-009U	Reman Caliper W/ ParaMaxx Upgrade	Right Hand	Bendix ADB22X, Axial 0 degrees	Trailmobile Axles	NA	3 holes each side, 1 bar, axial mount
ATC-AD2-010U	Reman Caliper W/ ParaMaxx Upgrade	Left Hand			NA	
ATC-AD2-011U	Reman Caliper W/ ParaMaxx Upgrade	Right Hand	Bendix ADB22X-LT, Axial 0 degrees	Hendrickson Axles 2018 - Present	K149714, K128828SC S-33647-3	3 holes each side, 2 bars, axial mount
ATC-AD2-012U	Reman Caliper W/ ParaMaxx Upgrade	Left Hand			K149715, K128829SC S033647-2	
ATC-AD2-013U	Reman Caliper W/ ParaMaxx Upgrade	Right Hand	Knorr ST7, Axial 0 degrees	SAF Holland 2017 - Present	03080009800, K097529K50	2 holes each side, 2 bars, axial mount
ATC-AD2-014U	Reman Caliper W/ ParaMaxx Upgrade	Left Hand			03080009700, K097530K50	

MERITOR STYLE CALIPERS

A-Line Part#	Caliper Type	Position	Caliper Style	Application	OE Number	Bracket Description
ATC-AD30-015	Reman Caliper W/ standard pin kit	Right Hand	Meritor EX225L2, Axial 0 degrees	Trailer	EX225L201, EX225L203	3 holes each side, 1 bar, axial mount
ATC-AD30-016U		Left Hand				
ATC-AD30-027U	Reman Caliper W/ standard pin kit	Right Hand	Meritor EX225L2, Axial 0 degrees	Trailer	EX225L205, EX225L207, EX225L209, EX225L211	3 holes each side, 1 bar, axial mount
ATC-AD30-028U		Left Hand				

MERITOR STYLE CALIPERS

A-Line Part#	Caliper Type	Position	Caliper Style	Application	OE Number	Bracket Description
ATC-AD30-205	Reman Caliper W/ standard pin kit	Right Hand	Meritor EX225L2, Axial 12 degrees	Freightliner Cascadia	EX225L262, EX225L274	2 holes each side, 1 bar, radial mount
ATC-AD30-206		Left Hand			EX225L261, EX225L273	
ATC-AD30-227	Reman Caliper W/ standard pin kit	Right Hand	Meritor EX225L2, Axial 12 degrees	Truck Trailer	EX225L275	2 holes each side, 1 bar, radial mount
ATC-AD30-228		Left Hand			EX225L276	
ATC-AD30-237	Reman Caliper W/ standard pin kit	Right Hand	Meritor EX225L2, Axial 12 degrees	Volvo 410mm rotor	EX225L244, EX225L248, EX225L270	2 holes each side, 1 bar, radial mount
ATC-AD30-238		Left Hand			EX225L243, EX225L247, EX225L269	
ATC-AD30-247	Reman Caliper W/ standard pin kit	Right Hand	Meritor EX225L2, Axial 12 degrees	Volvo 410mm rotor	EX225L250	2 holes each side, 1 bar, radial mount
ATC-AD30-248		Left Hand			EX225L249	
ATC-AD30-255	Reman Caliper W/ standard pin kit	Right Hand	Meritor EX225L2, Axial 12 degrees	Truck Trailer	EX225L266	3 holes each side, 2 bars, axial mount
ATC-AD30-256		Left Hand			EX225L265	
ATC-AD30-295	Reman Caliper W/ standard pin kit	Right Hand	Meritor EX225L2, Axial 12 degrees	Trailer	EX225L272	3 holes each side, 2 bars, axial mount
ATC-AD30-296		Left Hand			EX225L271	
ATC-AD30-437	Reman Caliper W/ standard pin kit	Right Hand	Meritor EX225L2, Axial 4 degrees	Mack/Volvo 410mm rotor	EX225L220, EX225L222	2 holes each side, 1 bar, radial mount
ATC-AD30-438		Left Hand			EX225L219, EX225L221	
ATC-AD30-447	Reman Caliper W/ standard pin kit	Right Hand	Meritor EX225L2, Axial 4 degrees	Volvo 410mm rotor	EX225L224, EX225L226	2 holes each side, 1 bar, radial mount
ATC-AD30-448		Left Hand			EX225L223, EX225L225	
ATC-AD30-455	Reman Caliper W/ standard pin kit	Right Hand	Meritor EX225L2, Axial 4 degrees	Truck Trailer	EX225L236	3 holes each side, 2 bars, axial mount
ATC-AD30-456		Left Hand			EX225L235	
ATC-AD30-465	Reman Caliper W/ standard pin kit	Right Hand	Meritor EX225L2, Axial 4 degrees	Truck Trailer	EX225L238	3 holes each side, 2 bars, axial mount
ATC-AD30-466		Left Hand			EX225L237	
ATC-AD30-475	Reman Caliper W/ standard pin kit	Right Hand	Meritor EX225L2, Axial 4 degrees	Volvo 410mm rotor	EX225L240, EX225L268	3 holes each side, 1 bar, axial mount
ATC-AD30-476		Left Hand			EX225L239, EX225L267	
ATC-AD30-485	Reman Caliper W/ standard pin kit	Right Hand	Meritor EX225L2, Axial 4 degrees	Truck Trailer	EX225L252, EX225L256	3 holes each side, 2 bars, axial mount
ATC-AD30-486		Left Hand			EX225L251, EX225L255	
ATC-AD30-495	Reman Caliper W/ standard pin kit	Right Hand	Meritor EX225L2, Axial 4 degrees	Trailer	EX225L258	3 holes each side, 2 bars, axial mount
ATC-AD30-496		Left Hand			EX225L257	

MERITOR STYLE CALIPERS

A-Line Part#	Caliper Type	Position	Caliper Style	Application	OE Number	Bracket Description	
ATC-AD32-035	Reman Caliper W/ standard pin kit	Right Hand	Meritor EX225H2, Axial 0 degrees	Mack, Volvo	EX225H218, EX225H228	3 holes each side, 2 bars, axial mount	
ATC-AD32-035U	New Caliper, W/ ParaMaxx Upgrade						
ATC-AD32-036	Reman Caliper W/ standard pin kit	Left Hand	Meritor EX225H2, Axial 0 degrees	Peterbilt, International	EX225H217, EX225H227		
ATC-AD32-036U	Reman Caliper W/ ParaMaxx Upgrade						
ATC-AD32-045	Reman Caliper W/ standard pin kit	Right Hand	Meritor EX225H2, Axial 0 degrees	Peterbilt, International	EX225H201		
ATC-AD32-045NU	New Caliper, W/ ParaMaxx Upgrade						
ATC-AD32-045U	Reman Caliper W/ ParaMaxx Upgrade	Left Hand	Meritor EX225H2, Axial 0 degrees	Peterbilt, International	EX225H202	3 holes each side, 1 bar, axial mount	
ATC-AD32-046	Reman Caliper W/ standard pin kit						
ATC-AD32-046NU	New Caliper, W/ ParaMaxx Upgrade	Right Hand	Meritor EX225H2, Axial 12 degrees	Mack, Volvo	EX225H216, EX225H226		
ATC-AD32-046U	Reman Caliper W/ ParaMaxx Upgrade						
ATC-AD32-237	Reman Caliper W/ standard pin kit	Left Hand	Meritor EX225H2, Axial 12 degrees	Mack, Volvo	EX225H215, EX225H225	3 holes each side, 2 bars, axial mount	
ATC-AD32-237U	Reman Caliper W/ ParaMaxx Upgrade						
ATC-AD32-238U	Reman Caliper W/ ParaMaxx Upgrade	Right Hand	Meritor EX225H3, Axial 0 degrees	Transit	EX225H301		
ATC-AD32-238NU	New Caliper, W/ ParaMaxx Upgrade						
ATC-AD33-041	Reman Caliper W/ standard pin kit	Left Hand	Meritor EX225H3, Axial 0 degrees	Transit	EX225H302		3 holes each side, 1 bar, axial mount
ATC-AD33-042	Reman Caliper W/ standard pin kit						

WABCO STYLE CALIPERS

A-Line Part#	Caliper Type	Position	Caliper Style	Application	OE Number	Bracket Description
ATC-AD4-001	Reman Caliper, W/ Bracket	Right Hand	WABCO PAN 17	Hendrickson, Cozad Axles	640175073, S-39094-R	3 M14 1.5 holes ea. side, 2 bars, axial mount
ATC-AD4-002		Left Hand			640175072, S-39094-L	
ATC-AD4-003	Reman Caliper, W/ Bracket	Right Hand	WABCO PAN 19-1	Hendrickson Axles	6401951020, S-39093-R	3 M18 1.5 holes ea. side, 2 bars, axial mount
ATC-AD4-004		Left Hand			6401951010, S-39093-L	
ATC-AD4-005A	Reman Caliper, W/ Bracket	Right Hand	WABCO PAN 22-1	Hendrickson Axles	6402250810, S-33648-1	3 M20 holes ea. side, 2 bars, axial mount
ATC-AD4-006A		Left Hand			6402250800, S-33648-2	
ATC-AD4-005B	Reman Caliper, W/ Bracket	Right Hand	WABCO PAN 22-1	IMT, Dexter, Ridewell Axles	40225012, 40225016	3 M16 1.5 holes ea. side, 2 bars, axial mount
ATC-AD4-006B		Left Hand			40225011, 40225015	
ATC-AD4-005C	Reman Caliper, W/ Bracket	Right Hand	WABCO PAN 22-1	SAF Holland Axles	6402250810, 3080006820	2 M18 1.5 holes ea. side, 2 bars, axial mount
ATC-AD4-006C		Left Hand			640-225-080-0, 3080006720	
ATC-AD4-007	Reman Caliper, W/ Bracket	Right Hand	WABCO MAXX 22T	Hendrickson Axles	6402220080, S-35973-R	3 M18x1.5 holes on each side, 2 bar, Axial mount
ATC-AD4-008		Left Hand			6402220070, S-35973-L	
ATC-AD4-009	Reman Caliper, W/ Bracket	Right Hand	WABCO MAXXUS-22	Freightliner, Western Star Axles	64032250	2 holes each side, 2 bars, radial mount
ATC-AD4-010		Left Hand			640322051	

CL-20 GUIDE PIN KITS

CONTINUOUS LUBRICATION FOR INCREASED CALIPER LIFE

- Continuous Guide Pin Lubrication
- No More Seizing Due to Lubrication Starvation
- Doubles Caliper Life
- Withstands High Heat Temperatures

Enhanced Guide Pins

The guide pins have been engineered with three radial grease grooves to provide grease along the full face of the bushing and pin.

High Temp Guide Pin Boots

Withstands temperatures of 300°C (572°F). That's double the temperature of some OE boots

Aluminum Lubrication Plug

Fills the guide pin radial grease grooves to prevent excessive grease and gas-locks in the caliper boots.

Guide Pin Seating Caps

Integrated hydraulic stop valve allows grease to be introduced into the guide pins during Preventive Maintenance (PM) cycles, while avoiding over-greasing.

MAX-A-SIL 998™ Disc Caliper Grease

Engineered for higher heat loads generated in Air Disc Brake application.



AVAILABLE CL-20 KITS

A-Line Part #	Caliper	Description	Additional Comments
ALCL20-200	ADB22X, LT, SK7, ST7	CL-20 continuous lubrication guide pin kit for Bendix ADB22X and Knorr Bremse SK7 calipers. (Bullet head zerk)	Bullet head zerk prevents mixed lubrication from standard grease guns.
ALCL20-201	ADB22X, LT, SK7, ST7	CL-20 continuous lubrication guide pin kit for Bendix ADB22X and Knorr Bremse SK7 calipers. (Standard grease zerk)	Standard zerk allows grease from any grease gun.



**UPTIME
DELIVERED**

Pennsylvania

866.439.2329

info@wheelerfleet.com

Texas

800.786.2035

customercare@wheelerfleet.com

wheelerfleet.com

A decorative horizontal bar at the bottom of the page, consisting of a long blue line that ends in a red triangle pointing to the right.