

HIGHWAY

at a

Glance

INCORPORATING
WESTVILLE, PINETOWN
AND UPPER HIGHWAY



w w w . s u b u r b s a t a g l a n c e . c o . z a



2024

Cell: 073 234 4705
davidsonkc@wakefields.co.za

WAKEFIELDS

ESTATE AGENTS

DIAMOND ACHIEVER PREMIER PROPERTY CONSULTANT

KAREN DAVIDSON
IEASA; F.E.T.C. - REAL ESTATE

Karen is a Wakefields top producer and markets homes, both Freehold and Sectional Title, in Kloof & Hillcrest together with all surrounding areas Everton, Gillitts, Forest Hills, Winston Park etc, covering the Upper Highway.

Her work ethic is second to none and her clients, both Buyers & Sellers, are always full of praise for the remarkable service that she provides.

Karen comes highly recommended and if you are looking to use a Property Consultant of high calibre then please call Karen, you will certainly not be disappointed.

Karen Davidson
Cell: 073 234 4705
davidsonkc@wakefields.co.za



www.wakefields.co.za

HILLCREST Curtains & Blinds

FREE CURTAIN MAKING

We also:

- Measure & quote (no obligation)
- Stock a wide range of curtain & upholstery fabrics
- Makeup and installation of curtains
 - Roman, Ventian & Wooden Blinds
- All types of tracks, rods, fully assembled

Shop 93, Oxford Village,
Hillcrest

(opp. Bootleggers)

Tel: 031 765 5386

Cell: 083 628 7225

Westville Unleashed

Pet Food & Accessories

Stockist of
Pet Food and
Accessories for:
Dogs, Cats, Birds,
Small Animals
and Fish including
Montego, Hills
and Royal Canin.

031 262 0728
171 Roger Sishi Rd,
Westville North
(Next to
Food Lovers Market)



Welcome

Welcome to the much-anticipated 2024 edition of the **Highway at a Glance**, your indispensable guide to the heartbeat of the Highway. This sought-after publication has proven its value over the years, becoming an essential resource for both residents and visitors alike. Compact in size yet rich in content, this handy brochure continues to be your go-to companion for navigating the Highway area. Showcasing places of interest, informative maps and shopping centres, it remains a reliable source of information for exploring our diverse community.

Inside these pages, you'll discover a treasure trove of information about our schools, clubs, churches, libraries, and medical facilities, providing a comprehensive snapshot of the services that make our community thrive. We encourage you to take advantage of the valuable resources within and support the local businesses featured in the advertisements throughout the brochure.

Once again, we have a digital version of the Highway at a Glance on our website. It's downloadable too. While there, you can also explore our advertisers feature listings and learn even more about what they have to offer. Here's to a year of community connection, exploration, and growth!

www.suburbsataglance.co.za

ACKNOWLEDGEMENTS

FRONT COVER PICS:
Children - Jean's Playglen

Published and designed by
AZALEA PROMOTIONS
E-mail: grandemangelyn@gmail.com

ADVERTISING:
Call Fiona Fryer on 082 498 4247
or e-mail: fiona@fryer.net.za

While every care has been taken to ensure the accuracy of this product, the publishers cannot be held responsible for any omissions or errors that may occur. No part of this publication may be reproduced without written permission of the publishers.

Contents

HEALTH & WELLNESS.....	2
HAIR & BEAUTY.....	6
FRAIL CARE & RETIREMENT.....	8
WESTVILLE.....	12
WESTVILLE & PINETOWN SPORT.....	13
WESTVILLE MAP.....	14
PINETOWN.....	18
PINETOWN MAP.....	20
KLOOF.....	24
KLOOF MAP.....	26
HILLCREST.....	30
HILLCREST & KLOOF SPORT.....	31
HILLCREST MAP.....	32
EDUCATION/SCHOOLS.....	37
INDEX TO ADVERTISERS.....	58
EMERGENCY NUMBERS.....	60



Health &



Wellness

HOSPITALS & MEDICAL CENTRES

PINETOWN

Life Crompton Hospital031 737 3000
Well baby & family planning clinic
Monday to Friday 8am - 3.00pm
Medicross Medical Centre031 709 3070
Paradise Medical Centre 031 708 5797

WESTVILLE

Life Westville Hospital..... 031 265 0911

HILLCREST & KLOOF

Kloof Medical Centre.....031 764 0945
12 Lyngarth Road in Kloof
Busamed Hillcrest Private Hospital.....031 768 8000
471 Kassier Rd, Assagay
Hillcrest Medical Clinic
54 Old Main Road, Hillcrest..... 031 765 7815

IMPORTANT CONTACT NUMBERS

Lifeline Durban031 202 4968
Pinetown Open Door Crisis Centre031 709 2679
St Mary's Hospital -
iThemba Clinic031 717 1100
Citimed Ambulance080 033 3911
ER24086 108 4124
Meditech.....071 518 3673
Netcare 911.....010 209 8373
Murray Square (Pinetown Pharmacy).....031 701 4477
In-Med Pharmacy.....031 702 3323
Westville North Pharmacy031 262 8172
Snake Removal - Nick Evans072 809 5806
Kloof SPCA.....031 764 1212
Hillcrest Veterinary Hospital031 765 3221
Fire Department.....031 361 0000

The Open Door Crisis Care Centre (The Open Door) is a non-profit, interdenominational outreach organisation established in 1997 by Thora Mansfield at the request of the local South African Police Services.



The Open Door
CRISIS CARE CENTRE

24HR 084 409 2679

Our aim is to sustain a holistic, multifaceted one-stop crisis and trauma centre offering counselling, social services, and support groups.

OFFICE: 031 709 2679

EMAIL: info@opendoor.org.za

7 Windsor Road, Pinetown, KwaZulu-Natal

Westville Dental Health




**Dr Patrick Lazarus
and Associates**

Our team of experienced dentists and hygienists are dedicated to helping you achieve optimal oral health through personalized treatment plans and the latest technology

**📞 031 266 8075 📧 lazarusrooms@gmail.com
14 Glenridge Road, Westville
🌐 www.westvilledentalhealth.com**

Feeling lonely or worried... want to speak to someone in confidence?

Lifeline Durban exists to facilitate
the emotional wellness of individuals
and communities.

Talk to us – either by phoning our
Head Office on 031 303 1344 or
send us an email on
adminteam@lifelinedurban.org.za

Our motto is:
“If it is important
to you, then it is
important to us!”.

24/7 NATIONAL
CRISIS- LINE
0861 322 322



In-Med
PHARMACY

I.M.K. GOVENDER

BSc (Chem); MSCC (SA); MSACI;
BPharm, MPS; Dip Man, ASAIM

- *Clinic facilities available*
- *Contracted to all major
medical aids*
- *Delivery service available*

Shop 3A, Sandy's Centre, 174 Josiah Gumede St,
Cowies Hill, 3610 | CELL:071 861 9736
E: inbengovender@vodamail.co.za

**DID YOU KNOW
YOU CAN BOOK
A DOCTORS
APPOINTMENT?**



031-702 3323/4



DENTAL PRACTICE

Quality care creating miles of smiles!

**QUALITY DENTAL CARE AT MEDICAL AID
RATES AND AFFORDABLE CASH RATES**

V. Amrit

B.Dent. Ther (UDW). Pr. no. 9500219

Dr Ayesha Theba

(B. ChD) Pret. Pr. no. 0250783

031 702 3480

031 701 2142

082 332 0183

Shop 3B, Sandy Centre (upper level)
cnr. Stapleton and Josiah Gumede Rd,
Cowies Hill, Pinetown

WESTVILLE NORTH PHARMACY & CLINIC

Due to the continued support of the community, we've survived for 16 years in business. Thank you for having faith in us. As promised, clinic services are available. We have a qualified registered nurse as part of our team at Westville North Pharmacy, who has a wealth of experience – a valuable addition to our health services. Please come in or call us to make an appointment with our clinic sister.

Our Clinic Services are:-

- Health Risk Assessment
- Blood Pressure
- Glucose
- Cholesterol
- BMI
- HIV Counselling & Testing
- Urine Testing
- Ear Syringing
- Influenza Testing
- Baby Vaccinations
- Breast-Feeding
- Baby Assessments
- Pregnancy Tests (urine)
- Consultation
- Family Planning (prescription may be needed)
- Wound Care
- Cleaning & Dressing

- Stitch Removal
- Injections (prescription may be needed)
- Nebulising
- Laboratory Service
- Woman's Wellness
- Breast Examination
- Pap Smear
- Men's Wellness
- Infusion Therapy

Wellness Screening:-

- We're fully equipped to carry out all Wellness tests and upload biometric data to medical aids.
- Contact us to find out if your medical aid covers Wellness Testing.
- Screening allows for the early detection of medical conditions such as uncontrolled blood pressure, glucose and cholesterol levels – left untreated these could develop into life-threatening conditions such as heart attack, stroke or death.
- Come in and talk to our sister on screening and how to make lifestyle changes in order to live a healthy balanced life.

Our focus is on treating patients holistically with the most appropriate advice and treatment plan, which falls within our scope of practice.



Westville North Pharmacy & Clinic

Care • Service • Value



HOURS:
Mon-Fri: 9am - 6pm
Sat: 9am - 2pm

Designated Service Provider for Discovery (UKZN & Other Schemes), Bankmed, Medihelp and Medshield.
Contracted to all major medical aids.
We will facilitate your acute & chronic needs.

WE DO EAR PIERCING
Both ears done simultaneously

Contact Neeri Kisoona on 031 262 8172 or fax 086 593 2549
Email: pharmacy.wnp@gmail.com / clinic.wnp@gmail.com
Westville North Shopping Centre, 157 Roger Shishi Rd (Blair Atholl) - near Kwikspaar



NETCARE
medicross



MEDICROSS HIGHWAY SUB-ACUTE AND REHABILITATION

Your health, in good hands

Medicross Highway Sub-Acute and Rehabilitation Hospital is a specialized healthcare facility dedicated to providing sub-acute and rehabilitation care to adult patients recovering from an illness, injury or surgery who no longer need to be hospitalized or are not yet ready to return home.

Services provided

- Rehabilitation after orthopaedic or spinal injury or surgery.
- Neurological rehabilitation / recovery after a stroke, injury or surgery.
- Medically complex patients that no longer require admission in an acute hospital but need to convalesce.
- Post-operative care after surgery or trauma.
- Palliative / End of life support.
- Recovery from a cardiac incident such as a heart attack.
- Recuperative care to return to health and strength.
- Advanced wound care in a clinical setting.

Our team

- Dedicated General Practitioner
- Physiotherapists
- Occupational Therapist
- Dietician
- Speech Therapist
- Psychologist
- Social worker
- Specialised nursing

Medicross Highway Sub-Acute

72 Old Main Road, Hillcrest, 3610

Tel: 031 476 0997

Book online at

www.medicross.co.za

Providing **YOU** with the best and safest care



NETCARE

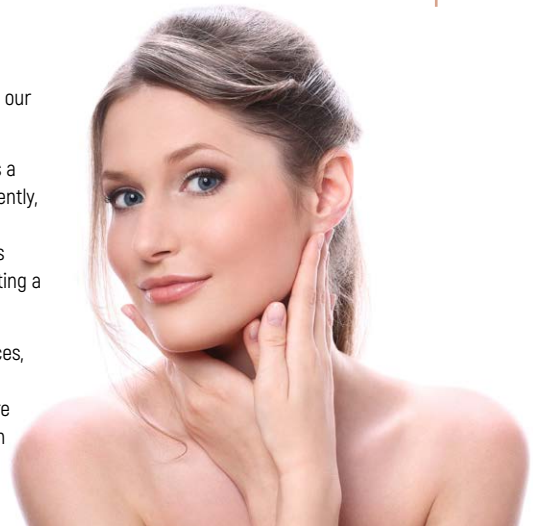


Hair & Beauty

In the intricate tapestry of life, health, beauty, and wellness weave a harmonious symphony, influencing not just our physical state but also our emotional and mental well-being.

Health transcends mere absence of illness; it's a dynamic equilibrium fostering vitality. Concurrently, beauty radiates from self-love and care, transcending societal standards. True wellness emerges when these elements coalesce, creating a holistic approach.

Embracing nutritious lifestyles, mindful practices, and self-care rituals becomes paramount. The pursuit of wellness is a personal journey, where balance is the compass. As we prioritise health and nurture self-love, a genuine and enduring beauty emanates, resonating wellness throughout our existence.



EM & EM SKIN AND BODY

Em & Em Skin and Body is open in Kloof and ready to pamper you. The salon is owned by Emily and Emmah, long-time employees of Carmen Kennedy of Namaste Health and Beauty.

Both ladies are expert therapists and have been trained by Jill Farquharson college and Beauty Specialist college and mentored by Carmen for 14 years.

Em & Em Skin and Body evolved as a result of Carmen retiring from the industry.

Come in and indulge in what we have to offer you: from facials to massage, waxing, manicures, pedicures, Shellac, airbrush tanning, peels for the skin and, of course, total relaxation.

72 Old Main Road, Kloof,

Mon-Fri: 08:00-16:30

TEL: 031 767 0374

CELL: 072 115 2723

Email: ememskinandbody@gmail.com

Em & Em
Skin & Body

"The best way to find yourself is to lose yourself in the service of others"

72 Old Main Road, Kloof
072 115 2723
031 767 0374
ememskinandbody@gmail.com

@emandemkloof

Em&Em skin and body
www.emandem.co.za

Hair & Beauty



PATRICK WALSH HAIR DESIGN



"I'd rather under-promise and over-deliver, than sell what I can't produce." Patrick Walsh defines success as when a client leaves his salon smiling.

Patrick has been in the hair industry for over 20 years and is well known for mastering the art of blondes. He knows hair - whether it is colour, styling or products and keeps up to date

with the latest trends and techniques. He knows what is best for each unique client, he listens to your wants and needs, and advises you on the best way forward. Patrick always ensures the condition of your hair makes you feel like royalty, both when you leave the salon and for the months between treatments.

But Patrick is more than just hair - he is a highly-spirited person who loves building genuine relationships with his diverse range of clients. He is vibrant, honest and down to earth. His lack of filter means you are always guaranteed 100% honesty - both with your hair and whatever real life stuff you end up chatting about during your appointment.

Life may not always be perfect, but at least your hair can be. And with the right hair stylist, one thing is certain - if you know you look good, you always feel so much better.




Patrick Walsh, an experienced professional hair stylist you can trust to make you look & feel fabulous!




PATRICK
walsh
HAIR DESIGN

14 Rapson Rd, Hillcrest

 patrickwalshhairdesign

079 037 5424

 pwhairdesign



Frail Care & Retirement

FALLS HAVEN REST HOME

What you can expect...

Our warm and caring qualified staff and registered nurses are on duty 24 hours a day to look after and care for your loved one with dignity and respect. We also have a doctor on call 24 hours per day. A physiotherapist and wound sister are available on request when needed. We cater for a maximum of twelve residents as we feel smaller numbers equals personal attention.

Type of accommodation...

We have single and shared rooms. We run our home exactly as you would expect a home to be. DSTV in the lounge, beautiful gardens to wander in or sit under the trees on summer days. We provide the bed and linen but do encourage families to bring pictures and personal things to make it more like home from home.

What you get...

We offer 3 meals and 2 tea times daily, with the main meal being at lunch time. We do the laundry for the residents and of course offer our 24 hour care.

For your peace of mind, our home is fitted (inside and out) with CCTV and linked to an armed response company. We have also installed solar back up power at Falls Haven.

We have past and present families who would be more than willing to give a reference or maybe chat about their personal experience. As we are well aware this is never an easy decision for any family to make.

For more info call Verna 082 415 7556

FALLS HAVEN REST HOME

Home from home for the aged



Professional nursing care for the aged in the heart of Waterfall

- Specialising in Frail Care
 - Fees all inclusive
 - Day care available
 - Temporary holiday care
- Also cater for respite or stepdown
 - Solar power installed

For more information contact
Verna 082 415 7556

Fairway House is situated on the edge of the 16th green of the Kloof Golf Course.

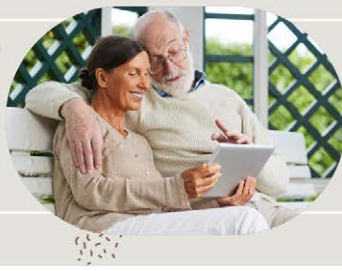


We are a small, intimate home that provides assisted living, respite care, step down care and semi frail care to those who enjoy a slower and quieter home. Our individualised care model means no one is just a number.

Fairway House

Deborah on 0611080506 or email
deborah@fairwayhouse.co.za

 www.fairwayhouse.co.za  Fairwayhouse



FAIRWAY HOUSE

In a quiet corner of the Kloof Golf Course is a Cape Dutch house that is home to folk who take things a bit slower. We pride ourselves on being able to offer a unique care facility that is modern and convenient but still has old world charm.

Fairway House has 5 en-suite rooms in the main house offering assisted living, semi frail and respite facilities for up to 6 residents.

The main house has a live-in head of house and a carer who assists where needed. A night time carer is available if needed.

A Registered Nurse oversees the care throughout, and when not on duty is always on call to assist.

Fairway House is owner-managed by Sr Deborah Butt who has 30 years of nursing experience.

THE VILLAGE RETIREMENT HOME

The Village Retirement Home is a retirement village based in Pinetown with easy access to main roads, medical and shopping facilities. It has established itself as one of the best facilities in the greater Durban area providing a safe and compassionate environment that takes care of the residents every need.

The Village offers independent living with house keeping and daily meals, comprehensive assisted living care and frail care with round the clock nursing.

Our retirement apartments are arranged on the ground and second-floor. We have the highest nurse-to-resident ratio, and some of the largest rooms in the province.

All rooms have been designed with comfort and quality in mind and an attention to detail, to appeal to a range of residents.

For good friends and excellent care in a homely setting, visit them at any time.



The
VILLAGE
RETIREMENT HOME

*Where everyone
is Welcome*

AMENITIES

- 24 hour personal care
- 24 hour emergency response
- Full time registered nursing staff
- Private bedsitter with bathroom en-suite
- Medication and blood pressure management
- Diabetic medication and dietary management
- Daily activities and social events
- Physio and chair exercises weekly
- Three delicious home-cooked meals daily
- Five tea and coffee times daily
- Daily housekeeping and laundry

Respond
to this advert
to receive
10% discount
on your first 6
months rental
with us

**5 Fairlea Close,
Hatton Estate, 3610**

PH: 031 702 3030

**www.thevillage.durban
info@thevillage.durban**

Botha's Hill Rest Home

Established 2007



- Frail Care
- Dementia Care
- Assisted Living

88 Old Main Road
Contact 076 860 2821

Email: liannepike@yahoo.co.uk

HILLCREST HEALTH & AGED CARE SERVICES

Hillcrest Health & Aged Care Services is owned by Marg Warnes, who is passionate about the care of the elderly. "We're proud to offer services for the care, support and protection of older persons." Determination to understand the unique needs of older people, Sr Marg attended 3 conferences on geriatric care and she now well versed in the subject. Sister Marjorie Warnes is a registered Nurse with SANC, and has working experience in a Cardiac High Care Unit. She is registered with the Board of Healthcare providers to help obtain assistance from medical aids with the cost of homecare.

Care and accommodation

Good health and well-being of the elderly is promoted in their care homes. Aid is given for management of minor health problems and any long-term pre-existing conditions. Residents are given assistance to help them recover from any illnesses or with necessary post hospitalisation care, right down to palliative or end of life care.

Private Nursing

HHACS can provide professional, individual and flexible support and care in ones' own home. From any illness and recovery to chronic, palliative & end of life care. They employ applicants who are qualified and experienced, but who are also honest, caring and ready to work.

Hillcrest Health & Aged Care Services specializes in frail care, assisted living as well as Care Homes, with facilities in the Upper Highway Area.

CARE HOMES

Our care homes focus on the holistic care of the aged. All physical and neurological conditions are catered for as well as palliative care and end of life care.

PRIVATE NURSING

We can supply carers or nursing staff to nurse you in the comfort of your own home. We have Nurses, Auxiliary Nurses, Carer's and qualified Sisters on our staff.

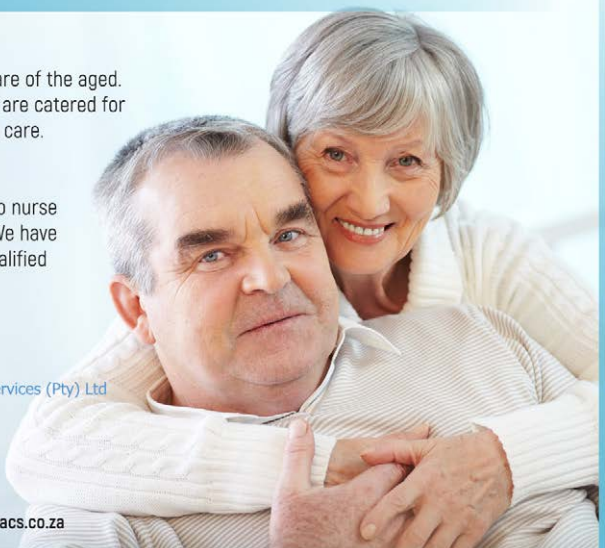
HHACS



Hillcrest Health & Aged Care Services (Pty) Ltd

Contact Sister Marge Warnes
Cell & WhatsApp: 083 651 6843
66B Springside Road, Hillcrest

✉ homenursing24@gmail.com 🌐 www.hhacs.co.za



This Prestigious
DAVID BEARE CARE CENTRE
is situated within the beautiful
surrounds of **DOONE VILLAGE**
in Manors, Pinetown (very near to Kloof)

**LIMITED
AVAILABILITY
IN THE DAVID BEARE
CARE CENTRE**

Are you looking for a Care Centre for your loved one where they will be assured of quality care and you will have peace of mind?

WE OFFER:

- Accommodation in comfortable single or double-rooms all with en-suite basin and toilet facilities
- 24 Hour services of qualified nursing professionals and supervised staff
- Post-operative recuperation (short and long term)
- Nursing care for the frail and semi-frail
- Specialised care for patients suffering from Alzheimer's, Dementia or Parkinson's
- Occupational Therapy Centre with emphasis on mental stimulation
- Palliative Care for patients with life limiting illnesses
- 3 Nutritionally balanced meals per day and catering for special diets
- Laundry and cleaning services
- 24 Hour security
- Due to recent extensions we are now able to offer limited assisted living rooms



FRAIL CARE



Editorial supplied by David Beare Care Centre



DAVID BEARE CARE CENTRE

provides a warm and loving
environment for those in need of care

FOR FURTHER INFORMATION, CONTACT:

General Manager: Bronwyn Hartslielief Tel: 031 737 2500 or 082 378 5938
Care Centre: 031 737 2504 - Email: davidbearecc@gmail.com

Westville

Boasting a rich history and a contemporary allure, Westville was originally established in the early 1840s as a farming community. It has evolved into a sought-after suburb that seamlessly blends its historical charm with modern amenities. The area has witnessed significant growth over the years, becoming a hub for families, professionals, and individuals seeking a tranquil yet well-connected lifestyle.

Today, Westville is highly regarded for its lush greenery, well-maintained parks, and a sense of community that resonates throughout its tree-lined streets. The suburb's appeal lies in its proximity to the city of Durban while maintaining a serene atmosphere. Residents enjoy a range of amenities, including shopping centers, reputable schools, and a diverse range of recreational facilities, making Westville an ideal choice for those seeking a balance between urban convenience and suburban tranquility.

One notable attraction is the Bergtheil Museum, a historical gem that showcases Westville's rich history through exhibits, artifacts, and interactive displays. For nature enthusiasts, the Palmiet Nature Reserve offers a scenic escape with hiking trails, birdwatching, and a chance to connect with the region's indigenous flora and fauna. Additionally, the Westville Country Club provides a venue for golf enthusiasts to enjoy a round in a picturesque setting.

With its blend of history, modernity, and recreational offerings, Westville continues to stand as a gem within the vibrant tapestry of the Highway.



PINETOWN & WESTVILLE SPORTS CLUBS

PINETOWN CLUBS

Ashley Sports Club	
10 Russell Street	031 709 2188
Firwood Sports Club	
Jan Smuts Avenue	031 708 3472
Lahee Park Club	
- Bowls.....	031 701 8752
- Swimming Pool.....	031 718 2531
- Squash.....	031 702 0206
- Hockey.....	031 701 3301
- Rugby.....	031 702 9528
- Cricket.....	031 701 1038
- Gymnasium.....	031 702 9756
Lions Club of Cowies Hill	
Monthly meetings 1st Monday, 19h30 at Paradise Valley Nature Reserve, Oxford, Rd, Pinetown	084 729 1990
New Germany Sports Club	
3 Harvey Road.....	031 705 1510
Pinelands Tennis Club	
Merrifield Road.....	031 701 0306
Tennis coaching - All ages at Pinelands by instructor Gary Westle	031 701 2841

WESTVILLE COUNTRY CLUB

An oasis of recreation, fun and nature for the entire family and our Westville community. We have been serving the community since the late sixties. With deep roots into the local Westville community, we offer our members and non-members a variety of social, dining and sporting facilities.

Our club offers memberships for Social, Squash & Racketball, Bowls, Pool, Snooker, and Eco Trails.

There is a welcoming atmosphere throughout the club, no matter what sport you are participating in, with social and competitive events organised throughout the year. We also host a variety of music events, wine tasting, wellness and so much more. We are also home to parkrun which takes place every Saturday at 08:00. These events are open to the public and we do welcome non-members.

Our facilities also offer a variety of dining options and event facilities for all occasions. We always welcome new

members to come and share in our vision to strive to provide the finest sporting and leisure environment for the greater Westville community.

See our website for more details: <https://westvillecc.co.za/>

WESTVILLE SPORTS CLUBS

Westville Old Boys Sports Club	
5 Link Road Westville.....	072 987 3077
Chiltern Park Sports Club	
40 Pitlochry Rd, Chiltern Hills Westville.....	031 262 4680
Westville Athletic Club	
123 Maryvale Rd Westville.....	031 266 5252
Westville Bowling Club	
1 William Lester Dr Westville.....	031 267 1324
Westville Country Club	
1 Link Road, Westville	031 266 1391
Gryphons Hockey Club.....	084 884 4498
Westville Tennis Club.....	076 860 2225

JOIN THE
WCC
FAMILY
FRIENDS.
FAMILY.
FUN.
www.westvillecc.co.za



WESTVILLE
COUNTRY CLUB

DON'T LET IT DRIP

CALL

ZIPP PLUMBERS cc

est. 1969

- Domestic, Commercial & Insurance
- Rainwater Harvesting & Water Filters
- Geysers, Solar Systems & Heat Pumps
- Drain Jetting Machine - Blockages
- Beautiful Bathroom Renovations
- Leak Detection Specialists
- CCTV Pipeline Surveys
- Certificates of Compliance
- Septic Tanks & Soak Pit



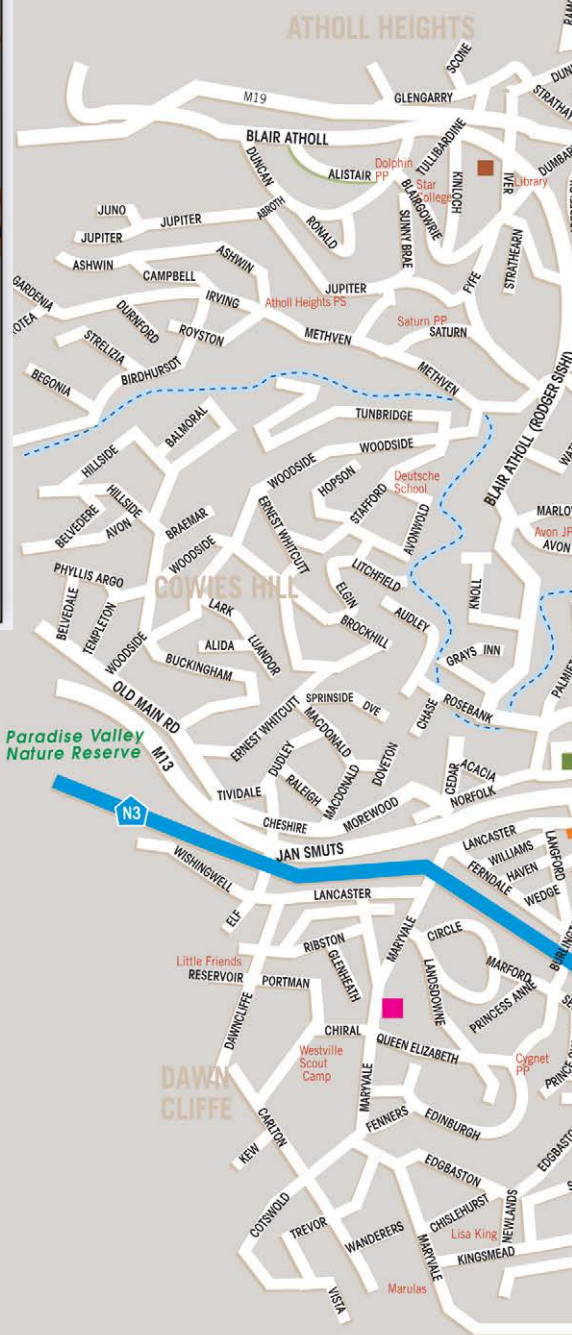
Best of Durban Winner



admin@zipplumbers.co.za
 031 266 1396
 083 233 1539

WESTVILLE PLACES OF WORSHIP

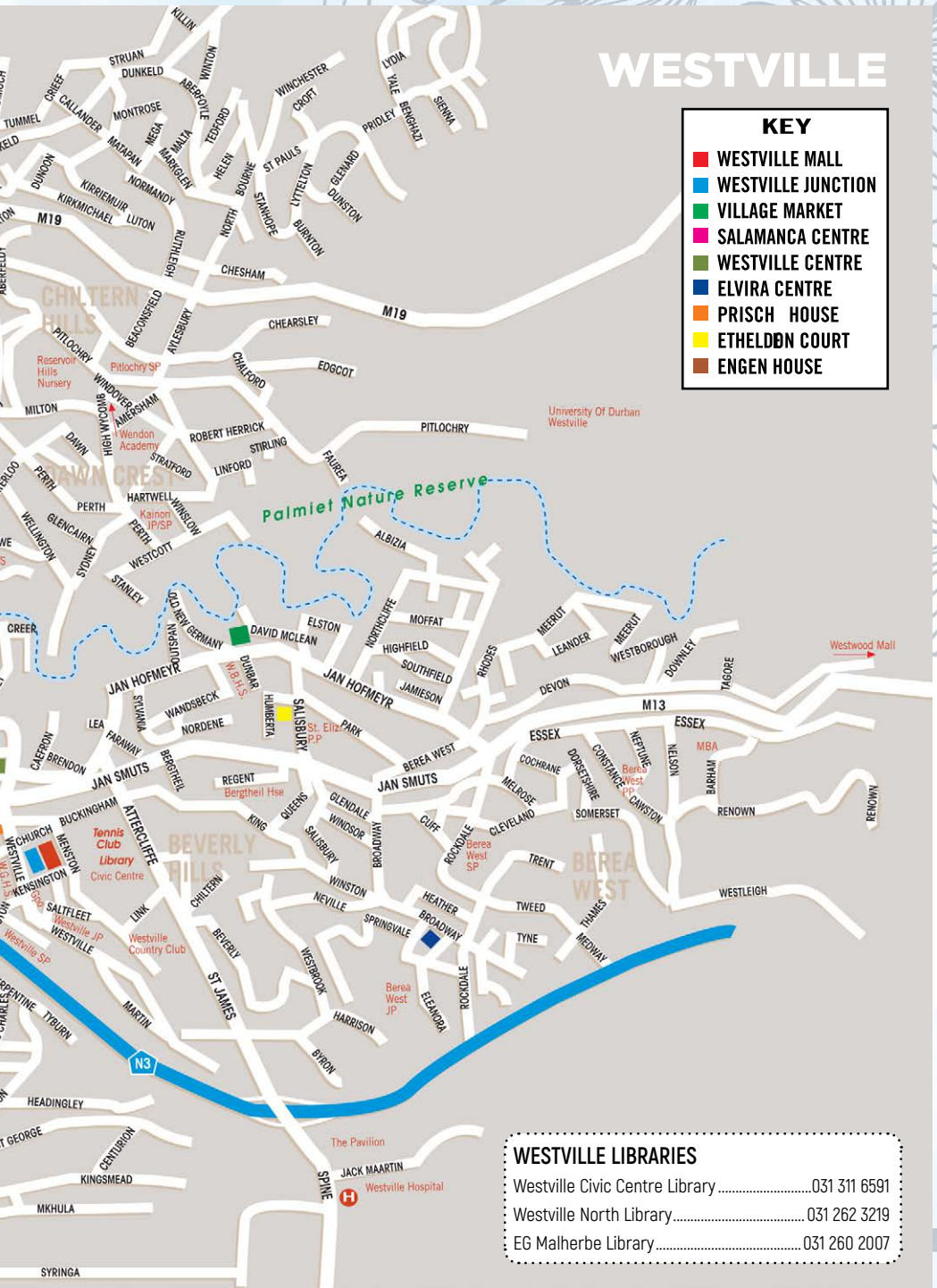
Westville Methodist Church.....	031 266 5222
Westville Christian Fellowship	031 266 5316
Westville Baptist Church	031 266 9008
Westville Catholic Church.....	031 266 1393
St. Elizabeth's Anglican Church	031 266 4325
Westville Presbyterian Church	031 266 0282
Westville Dutch Reformed Church.....	031 266 5250
Westville Christian Brethren	031 262 1485
Assemblies of God Westville	031 262 4250
Heartlands Family Church.....	031 266 7799
Soofie Mosque.....	031 262 4246
Lutheran	031 266 9297
Westville New Church.....	031 262 2342
Riverside Family Church.....	083 448 7334
Family Life Change Centre.....	031 701 3953
West City Fellowship.....	031 266 5316



WESTVILLE

KEY

- WESTVILLE MALL
- WESTVILLE JUNCTION
- VILLAGE MARKET
- SALAMANCA CENTRE
- WESTVILLE CENTRE
- ELVIRA CENTRE
- PRISCH HOUSE
- ETHELDBON COURT
- ENGEN HOUSE



WESTVILLE LIBRARIES

Westville Civic Centre Library031 311 6591

Westville North Library..... 031 262 3219

EG Malherbe Library..... 031 260 2007

WESTVILLE SHOPPING CENTRES



WESTVILLE MALL

A carefully selected range of stores chosen to bring you an exceptional shopping experience!

35 Buckingham Terrace, Westville

WESTVILLE JUNCTION SHOPPING CENTRE

Situated in the heart of Westville, opposite Westville Girls High School, Westville Junction offers a wide variety of stores for all your shopping needs.

7 Westville Rd, Dawncliffe

WESTVILLE PAVILION SHOPPING CENTRE

In addition to a newly renovated food court, which offers around 40 family-oriented eateries and excellent coffee shops, there are also wonderful amenities that make The Pavilion ideal for just about any shopping experience.

Jack Martens Drive

VILLAGE MARKET WESTVILLE

In offering convenience as well as diversity to our customers, we cater all our customer needs from gifts and picture

Heathers

School & Sportswear

We are stockists of Schoolwear in Westville and surrounding areas which include:

- School uniforms
- Ballet outfits
- Various Sports attire

Tel: 031 266 6262 / Fax: 031 266 6262

Email: heathersschoolwear@gmail.com

Scan for directions
to our store



123 Jan Hofmeyr Rd
Westville
The Village Market
Shop 21, Upper Floor

GREEN + CROSS
FEEL THE COMFORT



Official outlet for
Just Labels



Shop Local

framing to beauty and hair salon, cell phone repairs and accessories, model toy shop and locksmith to mention a few.

Specialised stores include school uniform and accessories for all our local schools as well as medical services: dentist, hearing aid laboratory, physiotherapists, Clicks pharmacy and medical doctor.

The Mall Gallery offers original artwork, unusual gifts as well as framing of prints and paintings for both private individuals as well as large corporates.

Our eating outlet, Foon Lok Nien is renown for their excellent food and hospitality! Don't forget our fresh fish and seafood outlet at Seafood Village!

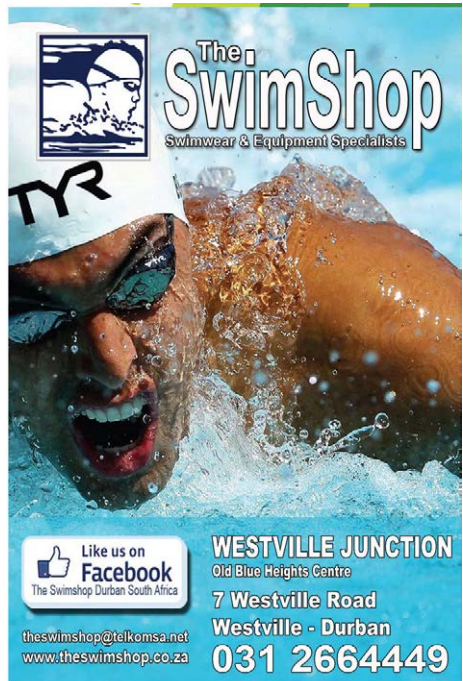
Visit us at 123 Jan Hofmeyr Road, Westville for safe, secure and free parking with friendly and efficient retailers waiting to assist you.



the mall gallery

**Prints
Mirrors
Framing
Original Art
Unusual Gifts
Corporate Framing**

**Westville Village Market
123 Jan Hofmeyr Road, Westville
Tel/Fax: 031 267 0022
Tony van Rensburg: 082 651 1961**



The SwimShop
Swimwear & Equipment Specialists

TYR

Like us on **Facebook**
The Swimshop Durban South Africa

WESTVILLE JUNCTION
Old Blue Heights Centre
7 Westville Road
Westville - Durban
031 2664449

theswimshop@telkomsa.net
www.theswimshop.co.za

Pinetown



Pinetown boasts a fascinating history dating back to its establishment in the mid-19th century. Initially named after the abundance of pine trees that characterized the region, Pinetown began as a small settlement focused on timber production. Over the years, its strategic location along major transportation routes contributed to its growth, transforming it into a thriving urban center with a mix of residential, commercial, and industrial developments.

Today, Pinetown stands as a dynamic town with a myriad of positive attributes that attract residents and visitors alike. Its strategic positioning near Durban makes it a convenient hub for both work and leisure. The town offers a diverse range of amenities, including shopping centers, schools, and healthcare facilities, fostering a sense of community and making it an ideal place for families to settle. Green spaces like Giba Gorge Nature Reserve add a touch of natural beauty to the area, providing opportunities for outdoor activities and relaxation.



SILVERTON **MAHLE** **RADIATORS PINETOWN** *Est 1986* **cooling system specialists**



Owner run 1985

Our core business.....

- RADIATORS
- FUEL TANKS
- INTERCOOLERS
- OIL COOLERS
- FITMENT & TESTING
- CUSTOM BUILDS
- MACHINE CLEAN
- DIAGNOSTIC TESTING

- POOR COOLING SYSTEM
Machine Flushing of engine cooling system to remove oil, sludge, dirt & rust.
- POOR FUEL SYSTEM
Coating of fuel tanks to STOP rust and corrosion with lifetime protection.



4 Malcolm Rd, Westmead, Pinetown (Opp. Bakers Biscuits)

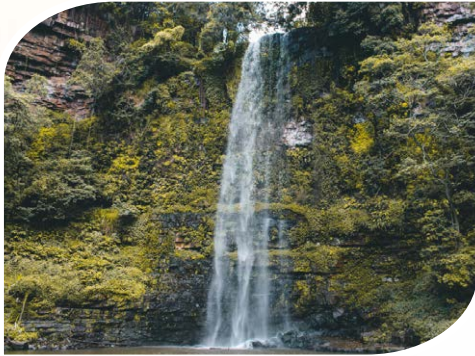
Tel: 031-700 1092 • CELL: 082-893 8534

Email: tony@silvertownpinetown.co.za

owen@silvertownpinetown.co.za

www.silvertownpinetown.co.za

The Mariannahill Monastery, founded in 1882, is a historical landmark that showcases stunning architecture and provides insight into the area's cultural heritage, while the Giba Gorge Mountain Bike Park offers thrilling adventures amidst scenic landscapes. The Pinetown Museum provides a journey through time, showcasing artifacts and exhibits that highlight the town's evolution. Whether it's exploring historical landmarks or enjoying outdoor activities, Pinetown offers a well-rounded experience for residents and visitors alike.



ETHEKWINI LOCAL HISTORY MUSEUMS

Pinetown Museum

TEL: 03 1-3 11 63 43/6 408

anthee.ramlucken@durban.gov.za

Inside Library Complex; Cnr Josiah Gumede Rd & Crompton Street, Pinetown

OPENING TIMES:

MON - FRI: 9AM - 3.45PM
SAT: 8:30AM - 12.30PM

and Bergtheil Museum

16 QUEENS AVENUE, WESTVILLE 3610

TEL: 031 266 5871/266 2954

OPENING TIMES:

MON - FRI: 08H30 - 16H00, SAT:
08H00 - 12H00

Mohau.Qalaza@durban.gov.za |
www.durbanhistorymuseums.org.za/

The **KLOOF AND HIGHWAY SPCA** provide a comprehensive service to a large community in order to fulfil our mandate in the protection of animals and to prevent cruelty, neglect and suffering.



OPENING TIMES: Monday - Friday : 08:00 - 16:00, Saturday : 08:00 - 12:00.
Every last Sunday of the month 08:30 - 12:30. Selected Public Holidays.

Village Road, Kloof | Phone: 031 764 1212/3
KLOOF SPCA RECEPTION:
Email: reception@kloofspca.co.za (general enquiries)

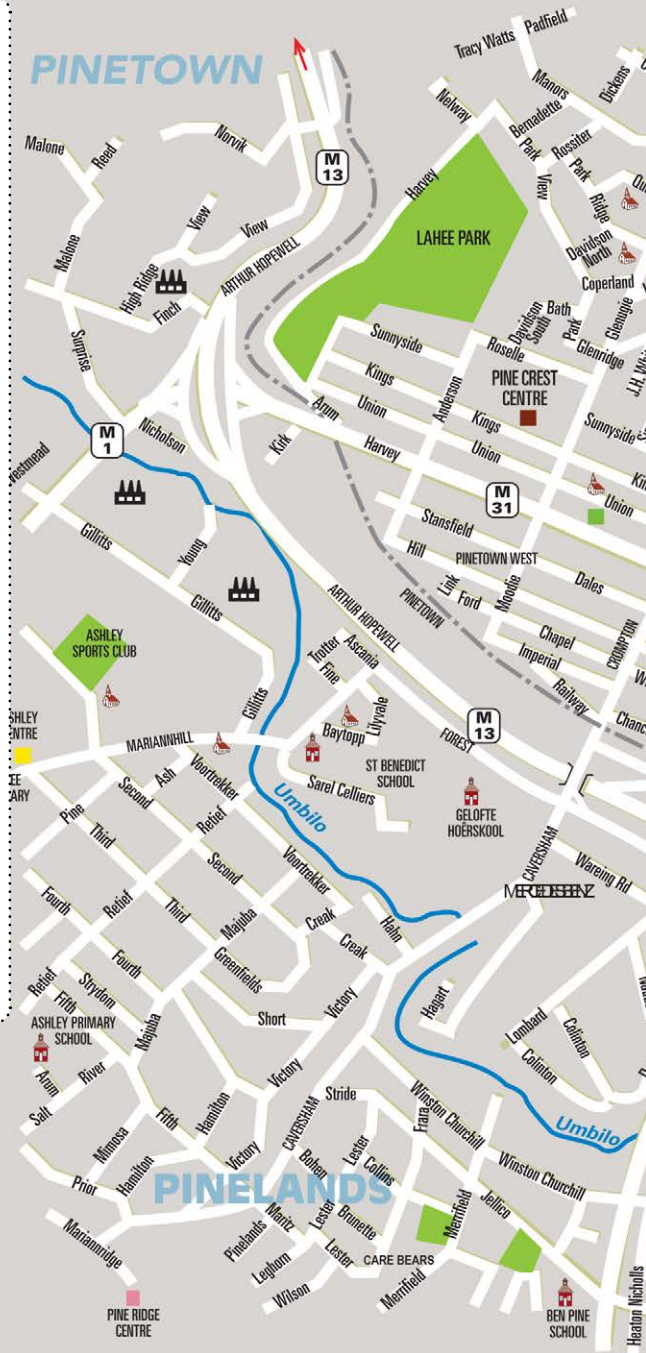


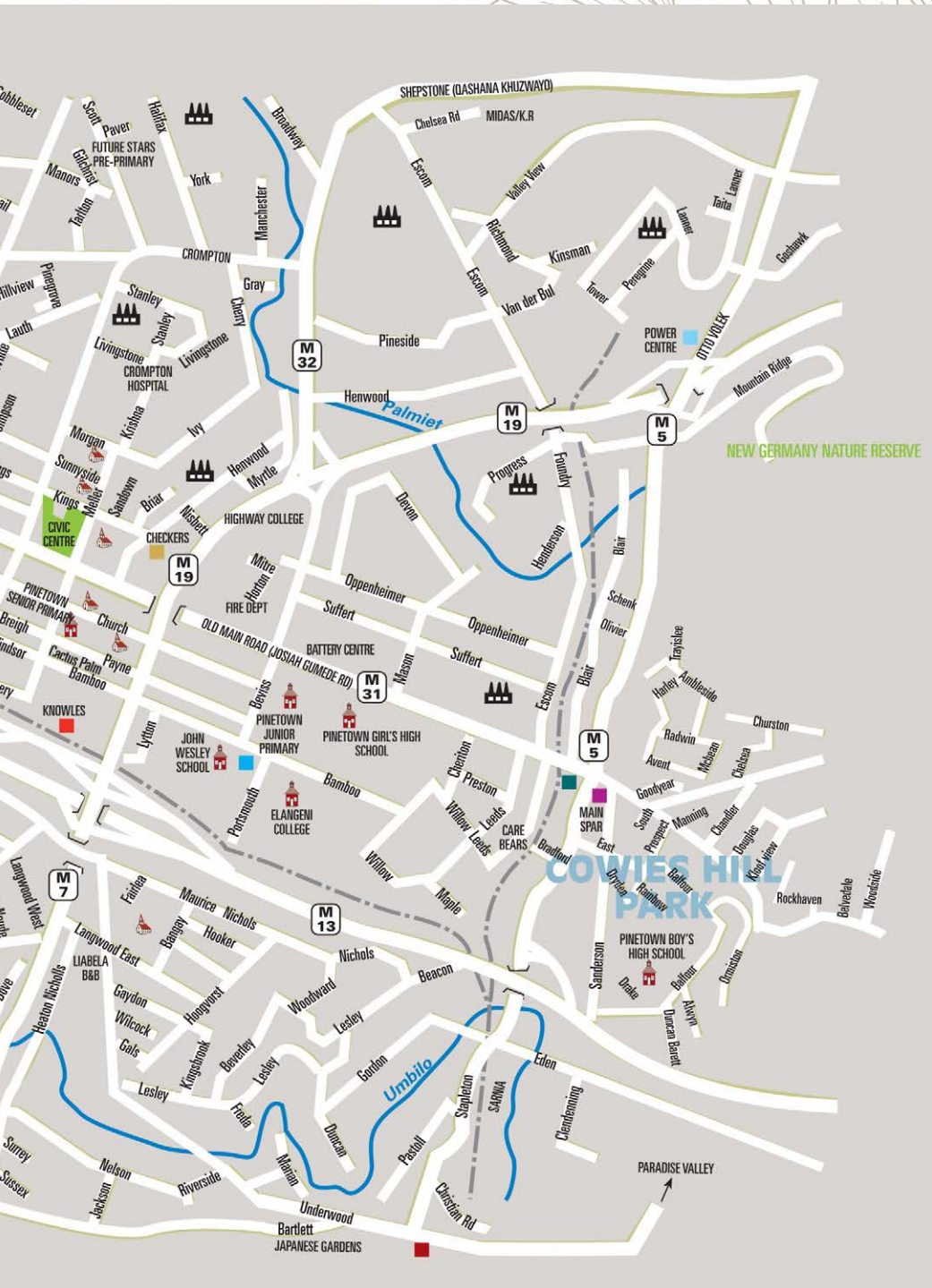
PINETOWN PLACES OF WORSHIP

Apostolic Faith Mission of SA.....	031 701 7807
Assemblies of God	031 700 9240
Baptist Church.....	031 701 4858
Catholic Church.....	031 703 2601
Church of Christ.....	031 702 7663
Christ Church.....	031 702 0815
Church of England	031 702 0817
Church of Nazarene.....	031 702 4317
City Hill Church/Doxa Deo	031 701 6871
Doxa Deo Campus	031 701 7808
Evangelical Lutheran Church.....	031 706 2630
Gereformeerde Kerk	031 702 8446
His Church.....	031 701 6211
Catholic Church Metro	
Archbishop.....	031 702 7337
Methodist Church of SA	031 702 7308
Missionary Sisters of the	
Ned Geref Kerk.....	031 701 1842
Ned Hervormde Kerk	
van Suid-Afrika	031 701 8086
Pinetown Presbyterian	031 702 0551
Precious Blood	031 702 9966
Pinetown Christian Fellowship.....	031 701 1214
Presbyterian Church of SA.....	031 702 9088
Rhema Family Church.....	031 701 5651
Roman Catholic Church	031 702 7337
Seventh Day Adventist.....	031 700 5301
St Johns Church	031 702 0712
Subud.....	031 702 6401
Redemption Point Church	031 700 5503

KEY

 ASHLEY CENTRE	 PARADISE JUNCTION
 PINERIDGE	 PINEVILLE JUNCTION
 CHECKERS CENTRE	 SANDY CENTRE
 KNOWLES CENTRE	 PINE CREST CENTRE
 PAIGE PLACE	 UNION MAIN







THE HIGHWAY HOSPICE

The Highway Hospice is one of Durban's oldest Non Profit Organizations. We have been providing Hospice and Palliative care for the eThekweni community for over 35 years.



We plan to do so for many a year still as we believe it a right to have a beautiful life and dignity in death. It is our commitment to this philosophy that drives our famous levels of care during such trying times in life.

We are your Hospice, and we are here for you!

As a Hospice, we provide care for people with advanced, incurable terminal illness in the final stages of life. We promote Palliative care which is treatment focused on the patient as opposed to the disease.

The goal is to, "make people feel better". Not only physically by providing comfort but also emotionally, socially, practically, intellectually and spiritually. This starts at diagnosis and continues during treatment, and moves through to end of life as needed.

www.highwayhospice.co.za



SANDY CENTRE

Sandy Centre is on the corner of one of the busiest intersections in Pinetown. Boasting a diverse array of shops and services, this bustling centre caters to the needs and preferences of the local community. **Dr V. Amrit Dental Practice** have their rooms here. There are a few eateries on offer, a hair salon, a printer as well as a locksmith.



DENTAL PRACTICE

Quality care creating miles of smiles!

QUALITY DENTAL CARE AT MEDICAL AID RATES AND AFFORDABLE CASH RATES

V. Amrit

B.Dent. Ther (UDW). Pr. no. 9500219

Dr Ayesha Theba

(B. ChD) Pref. Pr. no. 0250783

031 702 3480

031 701 2142

082 332 0183

Shop 3B, Sandy Centre (upper level)
cnr. Stapleton and Josiah Gumede Rd,
Cowies Hill, Pinetown

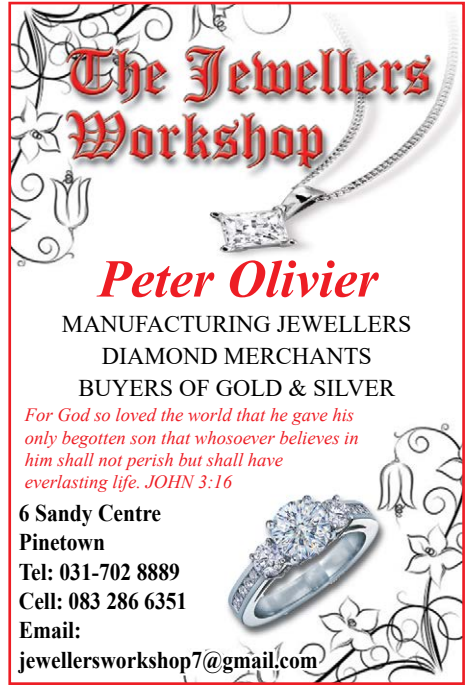
Main Spar caters for a range of people, You will also find **In-Med Pharmacy** and a company who assist with licence renewals at Sandy Centre.

The **Jewellery Workshop**, which was established in 1977, has always been a family business. As manufacturing jewellers, they have been crafting imagination into commemoration, with customised jewellery for special occasions. They work with all metals including silver, platinum and the various carats of gold. This speaks volumes of their level of skill.

With many years of experience in the field, they are talented designers who can create magical pieces from sketches worked out with their customers. Serving both local and international clients, they have built up an excellent reputation and their work is well respected. It's not surprising that they attract repeat customers year after year.

As well as manufacturing jewellery, they are a retail store and also buy and sell gold and diamonds.

The Jewellery Workshop is situated on the upper level of Sandy Centre. Call them on 031 702 8889 or pop into the shop to see their work.



The Jewellers Workshop

Peter Olivier

MANUFACTURING JEWELLERS
DIAMOND MERCHANTS
BUYERS OF GOLD & SILVER

For God so loved the world that he gave his only begotten son that whosoever believes in him shall not perish but shall have everlasting life. JOHN 3:16

6 Sandy Centre
Pinetown
Tel: 031-702 8889
Cell: 083 286 6351
Email:
jewellersworkshop7@gmail.com

Raising funds and food for the Voiceless Animals that do not have a voice, that they have a chance for a better life.



Call Jackie on
082 306 0405



In-Med
PHARMACY

**DID YOU KNOW
YOU CAN BOOK
A DOCTORS
APPOINTMENT?**



031-702 3323/4

I.M.K. GOVENDER

BSc (Chem); MSCC (SA); MSACI;
BPharm, MPS; Dip Man, ASAIM

- *Clinic facilities available*
- *Contracted to all major medical aids*
- *Delivery service available*

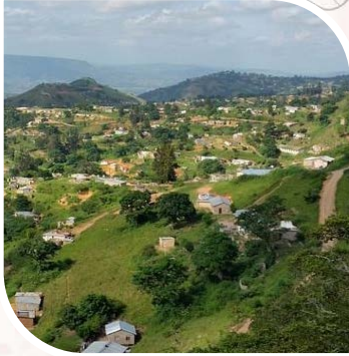
Shop 3A, Sandy's Centre, 174 Josiah Gumedé St,
Cowies Hill, 3610 | CELL:071 861 9736
E: inbengovender@vodamail.co.za

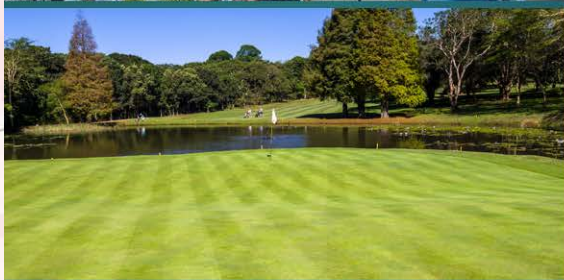
Kloof

Established in the late 1800s, Kloof initially served as a tranquil retreat for British colonial officials seeking respite from the coastal heat. Its name, meaning "gorge" in Afrikaans, aptly describes the area's geography, characterized by lush vegetation and stunning natural surroundings. Over the years, Kloof has evolved into a sought-after suburb, seamlessly blending its historical charm with modern amenities.

Today, Kloof is renowned for its leafy streets, upscale residences, and a sense of community that attracts families, professionals, and nature enthusiasts alike. The suburb's appeal lies in its peaceful ambiance, excellent schools, and proximity to Durban's city centre, offering residents a perfect balance between urban conveniences and natural beauty. The Kloof Country Club is a hub for recreational activities, providing a golf course, tennis courts, and social events that contribute to the sense of community that defines the area.

Kloof offers an array of interesting activities. The Krantz Kloof Nature Reserve, with its network of hiking trails, waterfalls, and diverse flora and fauna, is a haven for nature lovers. The Kloof Gorge provides breathtaking panoramic views and is a popular spot for outdoor enthusiasts. Additionally, the Kloof and Highway SPCA offers opportunities for community involvement and animal welfare support. Whether exploring nature reserves or engaging in community initiatives, Kloof provides a well-rounded living experience for those seeking a harmonious blend of history, nature, and community spirit.





KLOOF COUNTRY CLUB

*Where You're
always welcome*

**18 Hole Golf Course with warm up range and
practice areas
Resident Teaching Pro, Graham Tregear**

Tennis, Squash, Padel and Athletics

**Clubhouse facilities with multiple outdoor
covered deck areas, swimming pool and
restaurant**

**Open Tuesday to Sunday - Breakfast, Lunch
and Supper**

**Members bar and Visitors bar with live music
and entertainment weekly**

**Family atmosphere with kids play area,
safe environment and secure parking with
access control**

**FOR MEMBERSHIP APPLICATIONS VISIT
www.kloofcc.co.za**

Member Benefits:

- Full access to the Clubhouse facilities
- Up to 15% discount on Food & Beverage
- Use of the heated Swimming pool, Tennis courts, Squash courts (Squash upon application) and Padel
- Preferential rates on Golf Green Fees, Special member Tee times and use of Golf warm up range, Chipping and Putting practice areas
- Monthly Golf competitions held throughout the year with great prizes to be won
- Fully fitted Proshop with custom fitting services
- 20% Discount on secondary Membership fees for your family members (aged 25 and younger - T's & C's apply)

26 Victory Road, Kloof | Durban | South Africa | www.kloofcc.co.za
031 - 764 0555 | <https://www.facebook.com/kloofcc>



PLACES OF WORSHIP

St Agnes' Anglican Church	031 764 2037
Kloof Methodist Church	031 764 1041
Catholic Church.....	031 764 0101
Kloof Baptist Church	031 764 0574
First Church of Christ Scientist.....	031 764 2460
Dutch Reformed Church.....	031 767 3072
Olive Tree Church	031 303 9063
Open Skies	031 764 2806

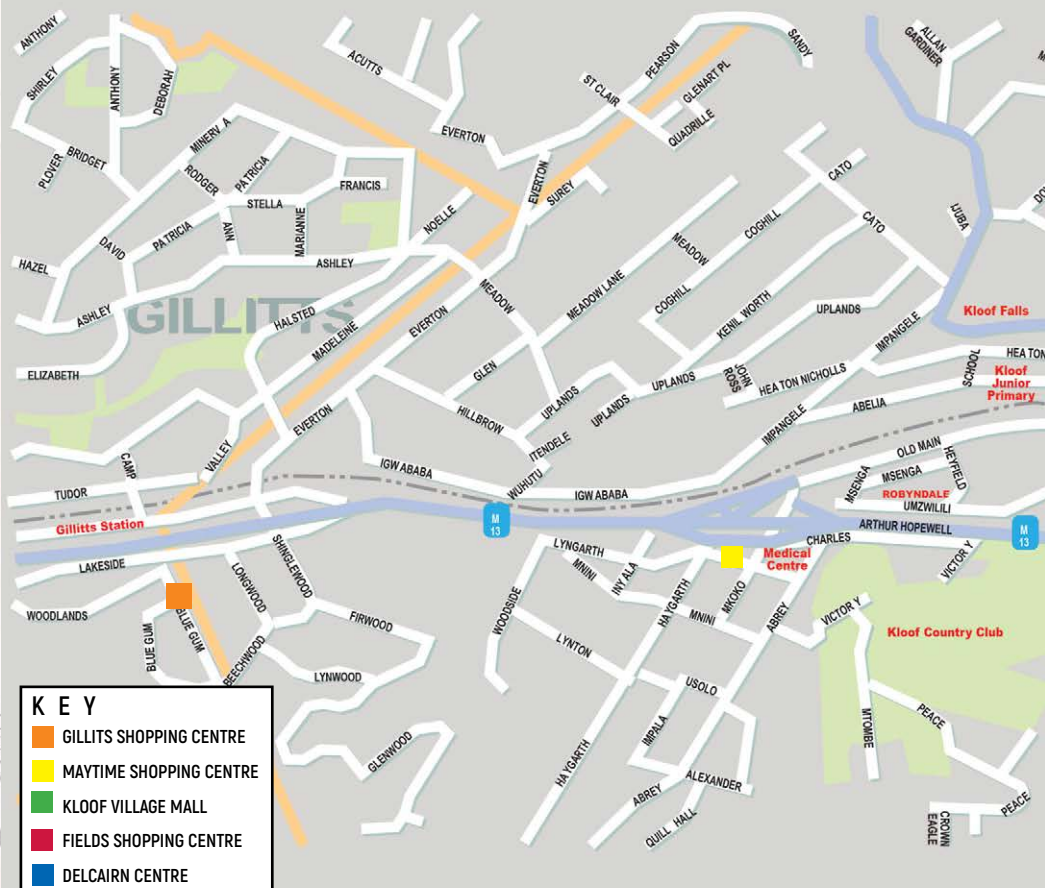
LIBRARIES

Kloof Library was officially opened in 1975 and is centrally situated, adjacent to the Town Hall. Wyebank Library was officially opened in 1990 but has subsequently been relocated to the main transport route. Membership figures at both the Kloof and Wyebank libraries are high, and the CD and Record library section are well used.

Telephone:

Kloof031-764 7543

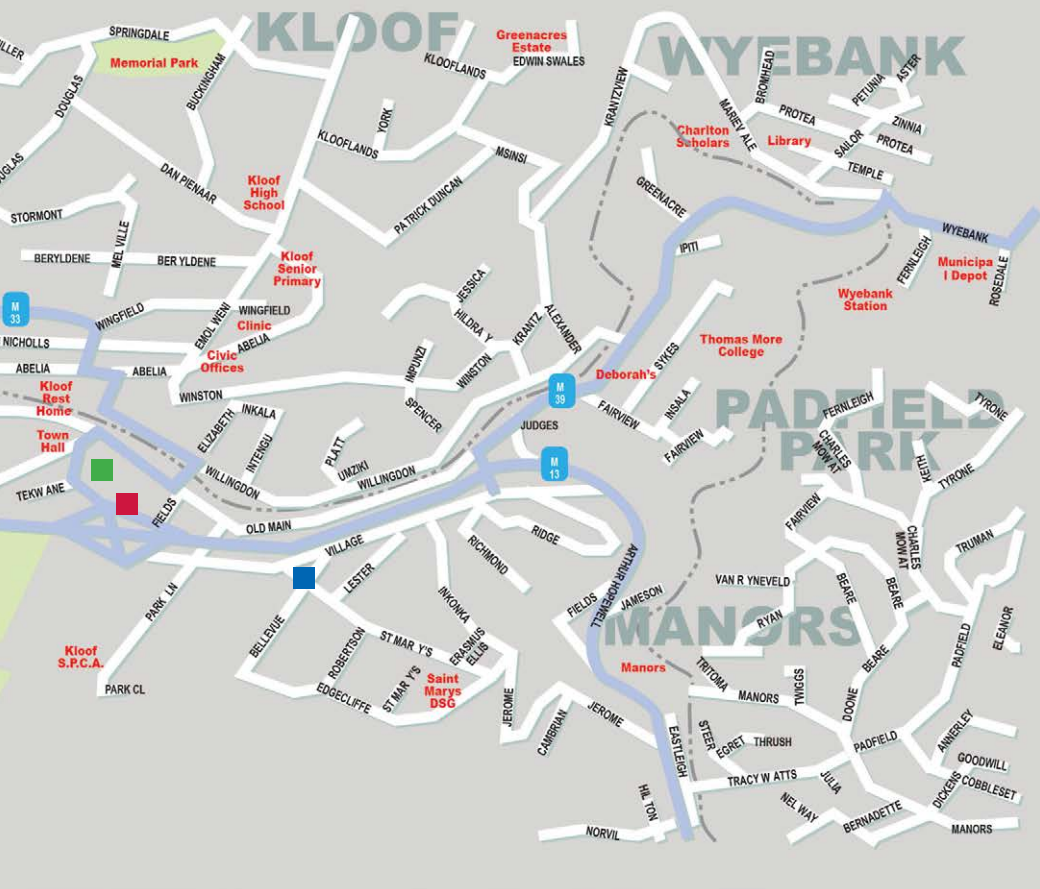
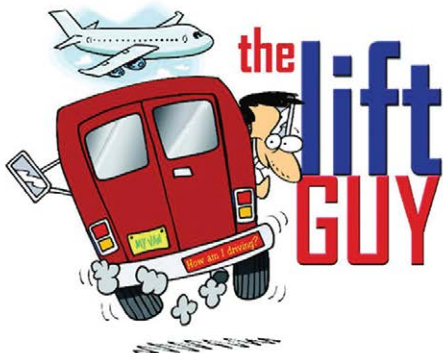
Wyebank:031-707 2201



AIRPORT TRANSFERS

Friendly, affordable
airport shuttles,
to & from the airport.

CALL ERIC
084 400 2755
for a quote



IMMERSE YOURSELF IN OUR UNIQUE EXPERIENCES



Mirror Maze



Lounge



Mystery Cabin

PUZZLE GAMES

COME AND BE AMAZED



33 Village Road,
Kloof Village Mall
(Opposite Wimpy)

☎ 031-100-0365



www.lostintime.co.za

LOST IN TIME

The First Mirror Maze in South Africa!

Discover a world of infinite reflections, surprising corners, dead ends and continues circles. This is a uniquely designed walk through, accompanied by music and colourful ambient lights designed to startle and surprise you. The fun of this attraction is getting lost inside the labyrinth of mirrors and looking for a way out.

Our Coffee Lounge is all fun and games! Come with family and friends and enjoy a good game to stimulate your mind.

We offer a range of favourite classic games, Impossible Puzzles, board games and fantastic light eats! We serve the best coffee, breakfasts, toasted sandwiches, milkshakes and desserts.

The Mystery Cabin Escape Room

Strange things have been happening in the woods.. They say that it is all centred around a locked-up cabin in the woods...Prepare yourself for a disorientating experience... Clocks run backwards. Balls roll uphill. Are you brave enough to enter?

Suited for families, friends and anyone who is looking for a completely different experience!

We are open during the week, and especially on week-ends. Book your adventure today!!

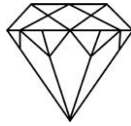
STOMP NOSE

BREWERY

kloof's award winning brewery and restaurant



060 487 4995 • kloof village mall • find us on facebook & instagram



CASH ONE GOLD

SOUTH AFRICA

We buy secondhand gold, jewellery,
diamonds, luxury watches & gold coins -
regardless of the condition.



Call/Whatsapp Ryan 079 795 0289
sales@cash1gold.com | 2 Village Rd, Kloof | www.cash1gold.com



Hillcrest

Hillcrest is a suburb with a rich history and a vibrant present. Established in the 19th century as a farming community, Hillcrest has witnessed significant growth over the years, evolving from its agricultural roots into a bustling residential and commercial hub. The suburb's development was catalyzed by its strategic location, offering a serene escape from urban life while maintaining convenient access to Durban and other surrounding areas.

Today, Hillcrest stands as a sought-after residential area known for its lush greenery, upscale homes, and a welcoming community atmosphere. The suburb has adapted to the needs of a growing population, boasting a range of amenities including shopping centers, schools, and recreational facilities. The picturesque landscapes, including the Valley of a Thousand Hills, add to the allure of Hillcrest, making it an ideal destination for those seeking a balance between tranquil suburban living and modern conveniences.

Hillcrest offers an array of interesting activities. The Shongweni Farmers Market provides a delightful experience with local produce, crafts, and live entertainment. The Krantzkloof Nature Reserve, with its hiking trails and scenic views, offers an escape into nature. For those interested in equestrian pursuits, the Summerveld Training Centre provides a unique opportunity to witness horse racing and training events. Whether exploring local markets, enjoying nature reserves, or experiencing the equestrian culture, Hillcrest provides a diverse range of activities for a well-rounded living experience.



KLOOF & HILLCREST SPORTING FACILITIES

HILLCREST SPORTS CLUB

031-765 3994/083-799 7364

HOME TO THE FOLLOWING:

HILLCREST VILLAGERS is an ATHLETIC CLUB

(082 455 4782) with a rich heritage founded in 1977 and over the years we have had many really talented athletes, some of them world class. Our membership currently stands at just over 300 athletes.

There are club runs almost every morning from various venues in and around the Hillcrest area. Our time trials are held every Thursday at 18h00, the distances being 2, 4 or 8 kilometres.

HILLCREST TENNIS CLUB (082 785 1802)

Email: info@hillcresttennis.co.za. The club was founded in 1929. Current membership consists of the following categories. Full senior members. Midweek ladies. Junior / Senior members - 18 to 12 years. Junior members - under 18 (scholars). Six tennis courts and a practise wall. Three courts are floodlit and can be hired out. A fully self-contained clubhouse and a Kiddies Playground.

HILLCREST BOWLING CLUB (082-765 4824)

Founded in 1933 HBC now has 3 greens. TAB's in days are Tuesday, Thursday, Saturday afternoons and Sunday morning. Visitors welcome.

SOCCER CLUB (083-799 7364, Email: info@hufc.co.za)

Highway United Fottball Club have a senior side, reserve senior team, an over 35 team and age group teams from U6 to U13.

HILLCREST HOMING PIGEON CLUB (Tel: 082-449 8634, Email: hillcrestpigeon@outlook.com)

GOLF

COTSWOLD DOWNS (031-762 3655) is an upmarket, low density residential Golf and Lifestyle Estate, surrounded by gently undulating hills, with awe inspiring scenery, indigenous natural forests, dams and an abundance of birds.

CAMELOT GOLF CLUB

(031-765 8347, 21 Wishart Road, Hillcrest)

Number of Holes: 9; Golf Digest Rating: 1

Number of Tees: 18; Par: 72/72

Course Length: 4582m - 5520m

Fairway Type: Kikuyu; Green Type: Bent

FOREST HILLS SPORTS CLUB

(42 Forest Drive, 031-763 3103)

serves the surrounding communities of Crestholme, Forest Hills, Gillitts, Hillcrest, Kloof & Waterfall.

Today, the Forest Hills Sports Club has become the primary sports and social focal point for the suburb and its surrounding areas. The club offers various Membership categories and offers the following Sports: Senior and Junior Soccer, Athletics and Social Tennis.

KLOOF

Kloof Tennis Club 082 377 4248

FitClub Kloof 084 967 3632

Athletics Kloof at Kloof Country Club:
info@athleticskloof.co.za

Gillitts Squash Club: grahamh283@gmail.com

Kloof Country Club 031 764 0555

Kloof Country Club offers a well maintained 'parklands' golf course complimented by squash, tennis and cricket facilities.

There are three squash courts on offer to its squash members. Courts are open from 08:00am to 22:00pm except when there are squash league matches being played.

Assagay Plumbers cc

also t/o  Hi-Tec Plumbing

Over 30 years experience

GEOFF EVENNETT

*Specialising in Geysers,
Soak Pits,
Septic Tanks,
Drain Jetting,
Pressure Jetting,
Maintenance & New Installations*

☎ 083 259 2391

✉ admin@hitecplumbing.co.za
office@assagayplumbers.co.za

HIGHWAY AREA

P.O. Box 20, Hillcrest 3650

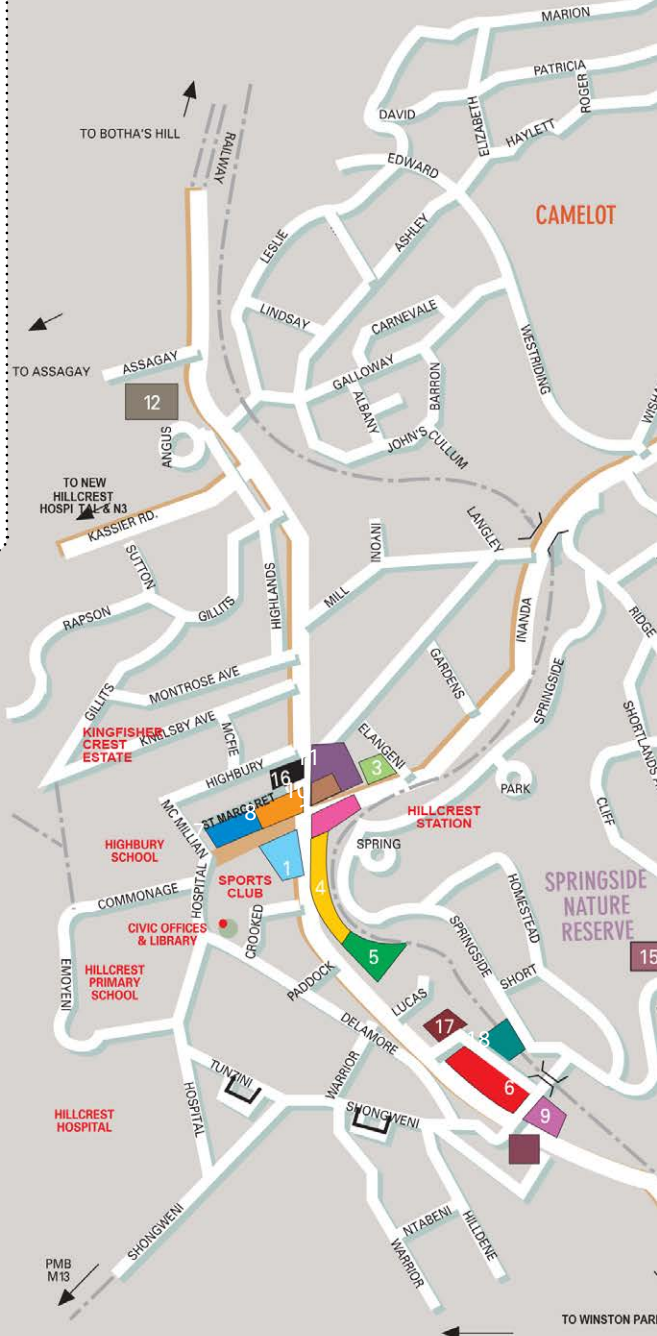
HILLCREST PLACES OF WORSHIP

Anglican Parish.....	031 765 5941
Baptist Church.....	031 765 7861
Christ Church.....	031 765 3990
Christian Life Family Church.....	031 765 1424
City Hill Church.....	086 1122331
Durban Christian Church (Oxford Village).....	031 242 5000
Heritage Family Church.....	084 465 4903
Hillcrest Methodist.....	031 765 4908
Hillside Church.....	031 765 3080
Lutheran Parish.....	031 205 8175
Methodist Church.....	031 765 5941
Presbyterian Church.....	031 765 1248
Salaah facilities - Muslim Prayer.....	072 567 9160
Sarepta.....	031 767 2126
Soul Restorer Ministries.....	031 765 3511
St Dominic's Catholic Church.....	031 765 1741

KEY

SHOPPING CENTRES

1	HILLCREST CORNER
2	CHRISTIANS CENTRE
3	JUNCTION ON INANDA
4	HILLCREST CENTRE
5	HILLGATE CENTRE
6	LILLIES QUARTER
7	RICHDENS CENTRE
8	VILLAGE CENTRE
9	8 OLD MAIN ROAD
10	CLOCK TOWER BUILDING
11	THE COLONY CENTRE
12	SUGARLOAF CENTRE
13	WATERCREST MALL
14	OXFORD VILLAGE
15	RESOURCE CENTRE
16	FITZGERALD CENTRE
17	BURNSIDE
18	BUILDERS WAY CENTRE
19	LINK HILLS CENTRE





HILLCREST LIBRARIES

eThekweni offers public library services at 84 circulating branch libraries across the metropolitan area. Library members may use any of EMLs lending libraries, but material must be returned to the same library from which it was borrowed.

Hillcrest Library.....031 311 2731
 Mon 12pm - 6pm; Tue to Fri 10am - 5pm
 Sat 8:30am - 12:30pm

Waterfall Library..... 031 763 3231
 Mon 12pm - 6pm; Tue to Fri 10am - 5pm
 Sat 8:30am - 12:30pm

**We will buy your old unwanted
 GOLD & SILVER JEWELLERY**

**Manufacturing, Remodling
 & Repairs. Valuations. Restringing.**

WE CHANGE WATCH BATTERIES.

Gifts & inexpensive Watches.





PADDY'S 
JEWELLERS 

Shop Cell:- 074 701 9902



ATM's

ABSA Bank
Nedbank

AUTOMOTIVE

Hi-Q Hillcrest

ELECTRONICS

Audio Architex
Bergens Appliances & Repairs

FASHION

Calypso Collections
Quiksilver

HOME & DÉCOR

Dial-a-Bed
Fabric & Lace
HOME etc.
Household Plastics
Paint & Beyond
Rugs Original
Zebbies Lighting

HEALTH & BEAUTY

Clicks
Ear Institute
Entropy Hair Design
Hair Base
Laser Lipo Global
Moffatt Optical
Prestige Dentistry
Rain Natural Skincare
Sorbet

FOOD & DRINK

Manolis Munchies
The Juice Kitchen
TOPS at SPAR
What's Cooking?
Woolworths Food

HOBBIES & GIFTS

Hillcrest Art Supplies
Nikki's The Gift Shop
Wool 'n Weave

OFFICES

Acutts
Antony Kerdachi & Associates
Corporate Traveller
Guardian Professional
Accounting Solutions
Safintra

RESTAURANTS

Olive & Oil
Oscar's Café
The Black Rabbit
Woolworths Café

STATIONERY & OFFICE

Bidvest Waltons
The Inkdrop

SPECIALITY STORES

PetMAX

Where *Quality* Meets *Convenience*

 **LILLIES
QUARTER**
LIFESTYLE • DESIGN • CENTRE

12-16 Old Main Road, Hillcrest | Tel: 031 765 4037 | www.lilliesquarter.co.za

Lillies Quarter, is situated at 12 – 16 Old Main Road in Hillcrest. The Centre is a high quality mixed-use shopping complex with 34 retail tenants and 11 office tenants. The strength of its position, located centrally in Hillcrest with easy access to the M13, coupled with the broad tenant mix and secure parking have enabled Lillies Quarter to establish itself as the centre of choice when it comes to quality and convenience shopping for the whole family.

As a large neighbourhood centre serving the interests of the Upper Highway community, Lillies Quarter focuses on the values of quality, safety and family, and it is this at its heart that makes it successful. With an extremely popular Woolworths Food as its anchor, a Clicks with a full clinic offering and pharmacy, a host of superb restaurants and a broad range of retail options from everyday shopping through to home décor, arts and hobbies, Lillies Quarter offers something for everyone in the family.

nails
waxes
facials
massages
& more

Sorbet

Sorbet Hillcrest

031 765 4186 | 082 090 4356
hillcrest@sorbet.co.za
Lillies Quarter | 12 Old Main Road

Helium
from
R11

HOUSEHOLD PLASTIC **FACTORY SHOP**

YOUR ONE STOP FACTORY SHOP

■ Gardening
■ Storage
■ Refuse
■ Pets
■ Kitchen
■ Toys ■ Craft

SHOP 3B LILLIES QUARTER, HILLCREST • TEL: 031-765 4004 • www.householdplastic.co.za



We do Embroidery and Print Transfer on:

- T-shirts, caps, golf shirts, towels & any garment of your own
- Corporate wear, sports & school uniforms
- Personalised labels and stickers

**Shop 101
Oxford Village
Old Main Rd
Hillcrest
082 664 7156**



SAZI EMBROIDERY

Sazi Embroidery is a family run business that specializes in embroidery and heat press printing on corporate clothing, special gifts and accessories.

The high tech specialised machines are able to print/ stitch on:

- T-Shirts
- Caps
- Gowns
- Towels
- Coffee Mugs and Plates
- Safety Wear
- Sports Wear
- Photo Frames
- Blankets

Send them your logo or artwork and their highly skilled staff will get stitching in no time

For a hands on and personal service visit the studio and we will creatively put together the perfect gift for your clients or loved ones while you wait.

Alternatively you can place your order online www.saziembroidery.co.za.



DESIGNER FRAME
THE HOME OF CUSTOM FRAMING

- 3D boxing
- Block mounting
- Ready-made frames
- Mirrors
- Skirting & wall panelling

Shop 6, Christians Village, 46 Old Main Road Hillcrest, 3650

Tel: 031 765 8439 | WhatsApp: 084 404 3436
Email: gilliando57@gmail.com

Decor & Framing Studio decorandframingstudio

DESIGNER FRAME

NEEDING YOUR TREASURED POSSESSIONS FRAMED?

- Custom framing & Plaques
- Box frame memorabilia (shirts ,medals, blazers etc)
- Block mount posters & Multi mounts for collages
- Shadow and float frame canvasses
- Mirrors, bevelled and plain

We stock:

- Ready-made frames A1, A2, A3, A4
- Baroque & plain framed mirrors
- Printed and painted canvasses
- Framed and loose prints
- A wide range of moulding and mount boards
- Framing hardware, Skirting and wall panelling

We've created a space for established & new artists to showcase their talents.

Education

Nestled within the vibrant landscape of the Highway area is a rich tapestry of educational institutions catering to every stage of a student's formative years. From Pre-Primary to High School, the diversity of educational options in this region is a testament to a commitment to providing a well-rounded and personalised learning experience.



Parents and guardians in the Highway area are fortunate to have a plethora of choices when it comes to early childhood education, with a variety of Pre-Primary institutions offering nurturing environments that lay the foundation for a lifelong love of learning.

Moving into the realm of primary education, the Highway area continues to shine with an array of public and private primary schools. The diversity of teaching methodologies, coupled with a commitment to inclusivity, ensures that students receive a robust education that not only imparts knowledge but also fosters critical thinking and interpersonal skills. As student's progress into their high school years, the educational landscape expands further, offering specialised high schools, academies, and institutions that cater to specific interests and career paths. This variety empowers students to choose an educational trajectory that aligns with their passions, ensuring that their academic journey is not only enriching but also uniquely tailored to their individual strengths and aspirations. The multitude of educational choices available in the Highway area fosters a dynamic learning environment that prepares students for the challenges and opportunities that lie ahead.

Help your child build a brighter future!

Kip McGrath provides a positive and supportive learning environment that promotes self-esteem and boosts every child's confidence. Professional tutoring is offered to children from Grade R to Matric.



Kip McGrath EDUCATION CENTRES

www.kipmcgrath.co.za

Kip McGrath Westville

Sarah Jordan
Unit 3, 101A Jan Hofmeyer Rd,
Westville
westville@kipmcgrath.co.za
031 267 2734

Kip McGrath Pinetown

James & Charmaine Hollins
48 Leeds Crescent
Pinetown
pinetown@kipmcgrath.co.za
031 702 6833

Kip McGrath Kloof

Bill & Carol Cuthbert
Unit E 8 Village Rd
Kloof
kloof@kipmcgrath.co.za
031 764 0459

Westville Schools



HIGH SCHOOLS

Star College.....	031 262 7191
Westville Boys High School.....	031 267 1330
Westville Girls High School.....	031 266 1258

PRIMARY SCHOOLS

Atholl Heights Primary School.....	031 262 6205
Avon Junior Primary School.....	031 262 6836
Berea West Junior Primary School.....	031 266 5345
Berea West Senior Primary School	031 266 4388
Cygnets Preparatory School.....	031 266 1741
Deutsche Schule.....	031 267 1307
Kainon Primary School	031 262 2342
Pitlochry Senior Primary School.....	031 262 3263
Star College.....	031 262 7191

Westville Junior Primary School.....	031 266 5220
Westville Senior Primary School.....	031 266 5218

PRE-PRIMARY SCHOOLS / DAYCARE

Al Noor Pre-Primary School	074 132 3098
Berea West Pre-Primary School.....	031 266 5363
Cowies Hill Pre-Primary School	031 702 3753
Cygnets Preparatory School.....	031 266 1741
Happy feet Daycare	082 913 5088
June's Pre-Primary School.....	072 636 0704
Kainon Pre-Primary School.....	031 262 2342
Little Acorns Preschool	062 564 6477
Little Friends Daycare.....	073 354 6390
Saturn Pre-primary School.....	031 262 4766
St Elizabeth's Pre-Primary.....	031 266 4282
Westville Pre-primary School.....	031 266 4371



SATURN PRE-PRIMARY

Saturn Pre-Primary School has provided over 45 years of successful education with first class facilities and an excellent reputation to the Westville community. A carefully planned programme is carried out with five groups, from 000 to Grade R children, promoting confidence, self-discipline and school readiness. Each group has a fully qualified teacher and a teacher assistant and we believe in maintaining a strong tie between school and home.

Aftercare facilities are available until 15h00, 16h00 or 17h00 depending on your needs. Extra mural activities take place after school hours and include Ballet, Pottery, Zulu, Playball, Gymnastics and Speech and Drama. We are closed during school holidays.

Call 031 262 4766 for more information.

SATURN PRE-PRIMARY

Chiltern Hills

Ages 2-6



Saturn Pre-Primary offers a safe and secure environment for young children and a stimulating curriculum that promotes the development of social and emotional, cognitive, language and physical skills, using interactive and engaging teaching methods by experienced teachers.



7 Saturn Road, Westville
www.saturnpre-primary.co.za
 031-262 4766

Email: admin@saturnpre-primary.co.za

Happy Feet

Est. 1997 **DAYCARE**



For babies (from birth)
& toddlers (up until 3 years)
Monday to Friday 7am to 5pm

CALL DEBI ON 082 913 5088

 **Happy Feet Daycare**

HAPPY FEET DAYCARE

Based in Westville/ Cowies Hill, Happy Feet Daycare is run by the owner Debi, whose hands on approach makes it your child's home away from home. She has over 25 years' experience with newborns and toddlers and is assisted by dedicated staff in looking after your little one. This Daycare is open for babies from birth to toddlers up until the age of three years old.

Debi is a paediatric, First Aid Compliant, and Breast Feeding Association trained day Mom. She works with new mums who are breastfeeding, through the weaning process and onto full solids, following the individual baby's needs. The Daycare fees include all food given during the day - they feed your child breakfast, a morning snack, lunch and an afternoon snack.

If you work full time and are looking for a loving, caring environment for your child, then Happy Feet Daycare is your fit. And a big bonus is that they only close over the December holidays. Individual care is guaranteed as they intentionally keep their group small, offering their services to a maximum of 10 babies/toddlers. Space is therefore limited, so don't delay to contact them for a visit and to book your spot. Call Debi on 082 913 5088

WESTVILLE SENIOR PRIMARY SCHOOL

Since its establishment in March 1935, Westville Senior Primary School has developed a reputation as a centre of high quality holistic education. Nestled in the beautiful leafy suburb of Westville, the school provides an ideal environment for learning. Our passionate, skilled, informed and well-equipped teaching staff ensure that the excellent quality of learner-centred education delivered continues to make us a highly sought after school where every learner is provided with opportunity for individual growth.

Our belief is that by providing a values driven holistic education, our children develop into balanced, perceptive and reasoning members of society who will successfully be able to cope with the expectations of high school, as well as the challenges of life. We emphasise the value of an integrated academic and co-curricular programme in developing the individual and promoting unity within a context of diversity.

A WSPS education provides opportunities for growth in academic, cultural, service and sporting fields, as well as developing leadership potential, tolerance, self-esteem and confidence.

A constructive and positive relationship with parents in the interests of the personal development of their children, and support for School and Governing Body initiatives, help make our community based school an institution of proven education excellence.



ACADEMICS



SPORT



CULTURE



COMMUNITY



*Westville Senior
Primary School*



Learners today, Leaders tomorrow

admin@wsps.co.za | 031 266 5218
www.wsps.co.za

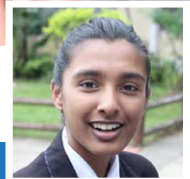


Excellence in Education

STAR COLLEGE

www.starcollege.co.za

**FROM 3 MONTHS
OLD TO MATRIC**



WHAT WE DO

We offer a holistic environment to serve your child's educational needs.

OUR SERVICES

- Dynamic Educators
- Small classes
- 100% Pass Rate since inception
- Excellence across all fields

Join us!

ABOUT US

We are one of the most trusted and affordable Independent schools which offers quality education



REGISTRATION OPEN NOW



031 2627191

20 Kinloch Avenue, Westville North 3630



HIGH SCHOOLS

Gelofte Skool	031 702 7201
Highway College.....	031 701 2239
His Church School	031 701 6211
Pinetown Girls High.....	031 701 1394
Pinetown Boys High.....	031 701 5046
St. Benedict School.....	031 702 6989
The Hundred Acres School.....	083 662 8127

PRIMARY SCHOOLS

Ashley Primary School.....	031 701 2201
Benjamin Pine Primary School.....	031 701 6161
Gelofte School	031 702 7201
Highway College.....	031 701 2239
His Church School	031 701 6211
John Wesley School.....	031 701 5603
Lyndhurst Primary School.....	031 705 1488
New Germany Primary School.....	031 705 3722
Northdene Preparatory School.....	031 708 4478
Pinetown Junior Primary School.....	031 702 2058
Pinetown Senior Primary School.....	031 702 5277

Sarnia Primary School.....	031 708 4635
St Benedict School.....	031 702 6989
The Browns School.....	031 700 3535
The Hundred Acres School.....	083 662 8127

PRE-PRIMARY SCHOOLS / DAYCARE

Bright Stars Homeschool	083 712 0393
Care Bears Wonderland.....	031 709 3460
Fairy Glen Pre-School & Aftercare.....	082 788 0141
Future Stars Pre Primary School.....	031 701 1274
Grace Place Preschool	031 701 6211
Honeybeez Pre-School & Aftercare.....	031 700 2173
John Wesley School.....	031 701 5603
Kids Kingdom Pre Primary School	031 701 2441
Kokkewiet Pre-Pimère Skool.....	031 702 1193
Little Lights Pre-School.....	031 700 5503
Peter Pan Pre-Primary School	031 701 5512
St. Benedict School.....	031 702 6989
The Birches Pre-Primary School.....	031 708 4764
Whizz Kidz Pre School.....	066 090 9637

CARE BEARS PLAYLAND offers schooling for children from birth to Grade R and After Care homework supervision. Working off the CAPS/ELDAS programme with qualified teachers. Wide variety of extra-curricular activities - swimming, soccer, cricket, rugby and ballet.

Please pop in at anytime to view the school.
Call 031 - 702 4817 for more information.

WHIZZ KIDZ

An independent pre school situated in Farningham Ridge, Pinetown; with easy access to the M13 and M7. We provide child care for pre-school children from birth to grade R and Aftercare from Benjamin Pine Primary School. Children work in a stimulating and colourful environment and our classes are structured and planned by a group of dedicated teachers to ensure a balanced, intellectual and fun filled day.

Our baby section can accommodate 10 children each child has their own drawer where their supplies such as nappies, formula, bottles etc are stored. There is a large amount of education toys and equipment to help your child's progression and encourage them to reach their mile stones. The nursery has air conditioning for the comfort of your child. For further info contact Nicci on 031 702 6965.



Care Bears Playland

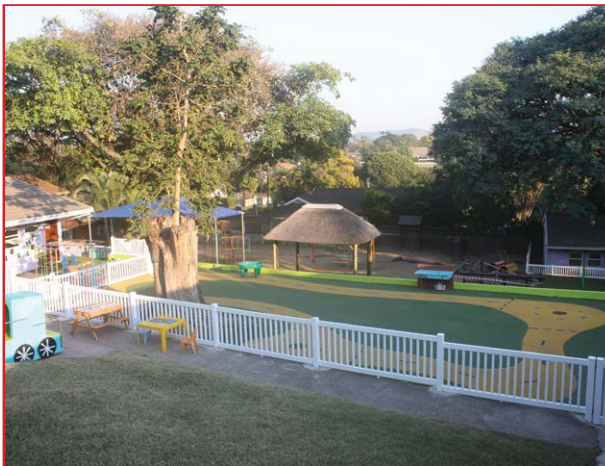
**18 Merrifield Road,
Pinelands, Pinetown**

Baby Care (from 3 months)
Pre-School (until Grade R)
Aftercare (includes holiday care)

**Open 6:45 - 17:30 daily
(Fridays until 17:00)**



031-702 4817
Email: durbansecretary@gmail.com



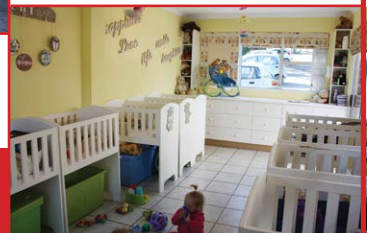
**Child care for pre-school children from
birth to grade R and Aftercare
from Benjamin Pine Primary School.**

2 Flodden Crescent, Farningham Ridge, Pinetown
Tel: 066 090 9637 | www.whizzkidz.co.za



**Whizz
Kidz**

**Hours are 06:45 to 17:15
Monday to Thursday
and 06:45
to 17:00 on Fridays.**





HIGH SCHOOLS

Curro Hillcrest, High School.....	087 285 2148
Fulton School for the Deaf.....	031 767 1215
Hillcrest Collegiate.....	073 768 2357
Hillcrest High School.....	031 765 1215
Kearsney College.....	031 765 9600
Kloof High School.....	031 764 0451
Nielson Academy.....	031 765 8823
Roseway Waldorf School.....	031 768 1309
St Mary's DSG, Kloof.....	031 764 9800
Thomas More College.....	031 764 8640
Waterfall College.....	031 710 1830
Willow Creek Special Educational Needs School.....	082 324 6521

PRIMARY SCHOOLS

Charlton Scholars.....	082 456 8481
Curro HCA, Primary School.....	087 285 9374
Forest View Primary School.....	031 762 1342
Fulton School for the Deaf.....	031 767 1215
Genuis Junction.....	084 831 1234
Gillitts Montessori.....	031 767 4627
Highbury Preparatory School.....	031 765 9800
Hillcrest Collegiate.....	073 768 2357
Hillcrest Primary School.....	031 765 1214
Kloof Junior Primary School.....	031 764 3157
Kloof Senior Primary School.....	031 764 0211
Nielson Academy.....	031 765 8823
Roseway Waldorf.....	031 768 1309
St Mary's DSG, Kloof.....	031 764 9800
The School of Modern Montessori.....	031 767 4627
Thomas More College.....	031 764 8640

Waterfall Preparatory.....	031 710 1814
Willow Creek Special Educational Needs School.....	082 324 6521
Winston Park Primary School.....	031 767 3214

PRE-PRIMARY SCHOOLS / DAYCARE

Beehive Montessori Preschool.....	072 592 9702
Bumble Bees Playschool.....	062 877 2766
Chatterbox Pre-School & Aftercare.....	082 355 8411
Clifton Hill Nursery School.....	082 938 7896
Curro Hillcrest, Preschool.....	087 285 9376
Fulton School for the Deaf.....	031 767 1215
Happy Days Pre Primary.....	031 764 1778
Happy Valley Pre Primary.....	082 578 7484
Hillcrest Edufarm.....	082 838 9722
Hillcrest Pre-Primary School.....	031 765 2555
Jean's Playglen.....	067 994 1542
Kloof Pre-Primary School.....	031 764 1577
Ladybird Pre School.....	031 764 2793
Little Lambs Preschool & Aftercare.....	067 852 1818
Little Poppets.....	083 656 1633
Little Red Hen Pre-Primary School.....	031 767 1759
Little Sunbeams Pre-Primary.....	061 207 7998
Rainbow Roo Playschool.....	079 102 4956
Situla Upper Highway.....	076 246 1206
The School of Modern Montessori.....	031 767 4627
Thomas More College.....	031 764 8640
Waterfall Educare.....	031 762 1274
Waterfall Pre-Primary.....	031 710 1813
Willow Creek Special Educational Needs School.....	082 324 6521

KLOOF PRE-PRIMARY SCHOOL

Kloof Pre-Primary School is a well established school catering for little ones from 12 months old, up to and including Grade R. Our outstanding building and facilities date back to 1926 when the first Kloof Government School was opened on our premises, and we are privileged to have one of the most extensive and exciting playgrounds in the Upper Highway area.

At Kloof Pre-Primary we know that all children learn most effectively through concrete experiences. This is why all of our play areas are very carefully set up to allow for maximum exploration and learning through all of the senses. Recent research in education has proved that children under 6 years old do not learn as effectively when they are passive. It is active engagement that promotes mental activity, helping children retain new knowledge and integrate it with what they already know. All the activities throughout the day are, therefore, child-centred to provide ample opportunities for active learning, creativity and critical thinking.

We have 2 classes in our Playgroup with qualified ECD Educators, as well as an assistant in every class. Our Playgroup is a separate area of the school, catering specifically for the one to three year olds, allowing an easy and smooth transition into the Preschool. Our

Preschool has 6 classes, from Grade RRR up to and including Grade R. All educators from Grade RRR to Grade R have four year teaching degrees or diplomas, and we are also privileged to have a teacher intern in every class.

During the year, we host a few "Playdate with Mom" events (usually held from 8:30am to 10:00am) for all parents and their little ones who are thinking of joining a school for next year. Bring a picnic and enjoy some time playing with your little ones, and getting to know our staff and more about out school. Keep an eye on our social media for when the next Playdate with Mom is taking place.

We also do School Tours every Wednesday at 8am, so please contact us if you would like to join us! Please email Thyra on admin@kloofpp.org.za or phone 031 764 1577.

Education
IS YOUR
Best TOOL



Kloof Pre-Primary School

*Growing curious minds for
a changing tomorrow*

Tours Every
Wednesday
8am
BOOK YOURS
NOW!

Playgroup 12 months–3 Years Old

Pre-School Grade RRR–Grade R



031-764-1577



admin@kloofpp.org.za



www.kloofpp.org.za

KLOOF JUNIOR PRIMARY

KJP is where young minds are nurtured to become the next generation of leaders and innovators. Look no further for your young child as we offer a wide range of facilities, subjects and sports that support the holistic development of your child, making us the perfect choice for your child's Foundation Phase schooling. Our dedicated and enthusiastic team will ensure your child receives only the very best education throughout their time with us. Our children learn through play, hands on experiences and teachers who specialise in their subject areas.

Our teachers support young learners who may just need that extra helping hand in our Academic Support Unit whilst our bright learners can enter a Mathematics extension programme to allow them to 'grow their wings' too. Our school is a happy environment where the children settle easily and grow to become their best selves. We encourage our children to be the best that they can be by upholding our motto of "Do Your Best" and becoming fully involved in all that the school has on offer be it our Sport for Life or Cultural Programmes.

We have a fully-fledged teacher intern programme so that our educators and learners have an extra pair of hands to assist them in every way. Our children are encouraged to become active participants in our community outreach programmes so that this become a way of life for them.

Our new Academic Support Unit building reflects the modernity of your young child and was officially opened in August 2023. The building features our new Creation Station that facilitates Creative Problem Solving for this new generation and houses new Therapy rooms for our children that require extra assistance. KJP is also currently building a brand new Aquatic Centre that will house a fully compliant KZN Aquatics 25m pool. We look forward to welcoming you to our Open Day on the 7th of March 2024.



Kloof Junior Primary School

where young minds are nurtured to become the next generation of leaders and innovators

We aim to develop and create learners who are confident, creative thinkers. We encourage each child to be the best that they can be, to believe in their dreams and themselves and we give them many opportunities to shine!

At the heart of our school

- Engaging and experienced teachers
- A holistic curriculum
- A safe and inclusive environment
- Academic Support Unit



CONTACT US

📞 031 764 3157 🌐 www.kloofjp.org.za

KLOOF SENIOR PRIMARY

The grounds, buildings and facilities at Kloof Senior Primary are constantly being upgraded to ensure all their learners get to enjoy the very best learning experience.

The Kloof Senior Primary teachers and staff members dedicate their time and energy to ensure that their learners succeed and become well-rounded individuals, who care about the environment and those around them.

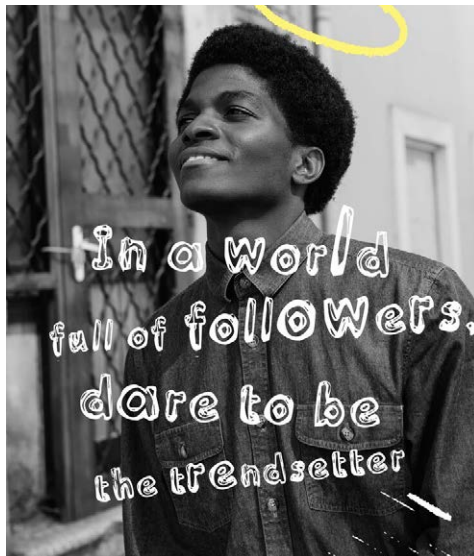
Kloof Senior Primary has many incredible facilities including:

A heated swimming pool, beautifully updated children's bathrooms, a well-equipped Learners Support Unit and an IT room. All the classrooms are fitted with Interactive whiteboards, and there are two large sports fields, a hard netball court, as well as a grass and astro cricket pitch.

The state-of-the-art facilities, dedicated staff members, parents, learners and teachers are the recipe to Kloof Senior Primary's success.

Their proud record of extremely successful past pupils including the likes of, Chad Ho, Dylan Richardson, Emma Chelius, Erin Gallagher, shows just how important it is to build a strong foundation at primary school level to ensure future success.

Kloof Senior Primary is proud to be a key part of the Kloof Schools family and watching their learners grow from strength to strength, at each of the Kloof schools, is truly remarkable.



Kloof Senior Primary

KSP strives to provide a dynamic and secure family environment where potential is unleashed. We offer Mainstream and Remedial for Grade 4 – 7.

With all that we do we aim to live up to our virtues of **Respect, Integrity, Courage, Honour & Responsibility.**

Our goal is to develop well-rounded learners who care about the environment, whilst performing both on the sports field and in the classroom.

Should you wish to go on a tour of our school, please contact us.

✉ reception@kloofsp.co.za

☎ 031 764 0211

🌐 www.kloofsp.co.za

📍 1 Patrick Duncan Road, Kloof

Follow us:  



KLOOF HIGH SCHOOL

Kloof High School is privileged to build upon the solid foundations established by the other Kloof Schools, providing countless learners in our community with quality education. Our shared commitment is to create accessible centres of excellence for the Kloof and Upper Highway communities.

Kloof High has been dedicated to this mission since 1960, and we are currently in a phase of continuous development and renewal across all aspects. Our institution boasts robust leadership and a team of highly qualified, compassionate educators.

Our Academic Support Unit excels in nurturing each learner's potential. We have a brand new Academic Support Unit that now caters for all learners from Grades 8 - 12. Our e-learning initiative focuses on blended learning, with our new Knowledge Centre serving as the central hub for this program.

We introduced Coding and Robotics into our curriculum in 2023, making a significant investment in this field.

Not forgetting the realm of sports, we've taken strides to enhance our facilities. Our swimming pool was heated in 2021, and in early 2022, we unveiled the Fitness and

Conditioning Centre. A quick review of our prospectus highlights the wide array of co-curricular activities offered at Kloof High, led by our dedicated coaches and managers.

Our Student Support and Wellness team comprises three qualified counsellors, an essential part of our commitment to creating a nurturing and caring school environment.

These are exciting times at Kloof High School, and for those who have embarked on their educational journey in other Kloof Schools, we are a natural choice. We proudly represent a truly South African school with a rich history and a promising future.



Discover Excellence



Kloof High School is a co-ed school focused on providing students with a well-rounded education, in a nurturing, family environment. For more than 60 years, we have assisted learners to "be the best that they can be" in the classroom and on the sports field.



KLOOF HIGH SCHOOL

ONE FAMILY, ONE SCHOOL

✉ admissions@kloofhigh.co.za

☎ 031 764 0451

🌐 www.kloofhigh.co.za

📍 34 Emolweni Road, Kloof



FOLLOW US



Thomas More College

An Inspired Education



Focus is given to developing each and every child thereby equipping him or her with relevant life skills in a nurturing environment preparing them to be tomorrow's leaders today. While we celebrate excellence, and hard work is duly recognised and rewarded, every child is loved and encouraged to discover, explore and express his/her unique, God-given talent.

Thomas More College believes strongly in family values and working together with the family unit as partners in education. Boys and girls interact naturally in a way that prepares them to integrate socially in an adult world. We are blessed with an enthused, energised, dynamic and professional staff body whose sole purpose is to unlock and unleash a love of learning through all spheres of school life with an element of fun.



TMC

For Admissions please contact Mrs Juliet Hartley
jhartley@thomasmore.co.za | 031 764 8640

www.thomasmore.co.za

15 SYKES RD | KLOOF | KWAZULU-NATAL

**YOUR
FUTURE IS
CO-ED**

**INDEPENDENT,
CO-EDUCATIONAL,
CHRISTIAN-BASED
DAY SCHOOL
FROM GRADE
0000 - 12.**



**REGISTERED CRECHE
& PRE-SCHOOL**

- Stimulating, loving and safe environment
- Qualified, passionate teachers and assistants
- Cooked healthy meals and snacks
- Huge stimulating playgrounds, cycle track, sandpit and sensory garden

6.30am To 5:30pm | [AFTER-CARE FACILITIES](#)

2 Elizabeth Rd, Hillcrest
www.jeansplayglen.co.za | T: 067 994 1542
 Email: jeansplayglen@gmail.com

JEAN'S PLAYGLEN CC

Fully registered centre, with a Christian ethos, we strive to provide a stimulating, loving and safe environment with experienced and qualified teachers, with experienced assistants. The programmes are age appropriate and the Crèche and Pre-school are completely separate with their own playgrounds, bathrooms, playrooms, sleep rooms, toys and teaching aids. All our staff have first aid certificates. Using recognized ECD/CAPS/NELDS programmes, children are encouraged to think for themselves.

A security guard is on duty during drop off and collection times. Extra-mural activities are available on the premises: playball, swimming, Gymnastic and Build em brix, with qualified instructors. Our pool is heated, covered and fenced at all times. The playgrounds are very large and are sectioned off so each group can use any one for a specific purpose. We are also proud of our "Recycled Sensory Garden" built to teach the children the importance of recycling.

Our bus collects children from Hillcrest Primary for aftercare. Homework for the grade 1s and 2s is supervised.

We are open throughout the year, bar 15 working days over Christmas and New Year. Fees are over 12 months. Holiday care is available at no extra cost to all registered children, casual children are welcome at a daily rate. We have an open door policy. Check out www.jeansplayglen.co.za.

CHATTERBOX PRE-SCHOOL

Chatterbox Pre-School is a home away from home situated in Winston Park. It's a vibrant school with passionate teachers! 'A teacher takes a hand, opens a mind and touches a heart.' Here we strive to give the best possible educational assistance, learning support and loving interactive environment. At Chatterbox Pre-School and Aftercare we understand the importance of providing care and structure beyond the school day to learners.

Chatterbox has settled in to its beautiful grounds next to Winston Park Primary School. We offer pre-school from 18 months to grade 00 as well as aftercare for Chatterbox and Winston Park Primary School children grade R to 7 and fun holiday care.

For more details contact Tash on 082 355 8411 or Tarryn on 084 746 1395 or check out the website www.chatterboxschool.co.za

**CHATTERBOX
PRE-SCHOOL**
Giggles, Grins, and Growing Minds!

**AFTERCARE
CLUB**
Chatterbox School

📞 Tash on 082 355 8411 or Tarryn on 084 746 1395
 📍 1 Trevenen Road, Winston Park
 🌐 www.chatterboxschool.co.za
 📘 Chatterbox Pre-school and Aftercare
 📍 Chatterbox_Pre_School

LITTLE RED HEN

Our school is situated in the leafy suburb of Winston Park and was established in 1987. Our approach to education is holistic and our programme stresses the importance of play. We cater for children from 10 months to Grade R. Our Montessori Centre was opened in 2007. The Little Red Hen children thus benefit from the best of traditional and alternate philosophies. We offer an Audiblox Programme which aims at the development of the foundational learning skills in reading, writing and mathematics. We offer half day as well as full day and holiday care. Our classrooms and playgrounds are extensively equipped. Our playground boasts a tactile pathway and a vegetable garden. We foster relationships with our parents and children are therefore given continuous support at school and at home.

Our children have access to Occupational Therapy as well as Speech Therapy during the school day should these interventions be necessary.

We warmly invite you to visit our busy little school and meet our warm, caring staff as well as our bright eyed and enthusiastic children as they engage in the activities set out for them in our playgrounds and classrooms. These activities are designed for exploration and self-discovery as the children actively learn through play.

There **ARE** many
WAYS **TO** learn



LEARN AND PLAY



Pre-Primary

"The years of childhood are a time to sow, not to reap"

Established: 1987

81a Jan Smuts Avenue, Winston Park

Holiday & Aftercare till 5pm

031-767 1759

www.lrh.co.za

10 months to 6 years of age

Looking forward to your visit!



LRPS EMBERTON HILLCREST

LRPS Group offers quality affordable education from 3 months to Grade R, open during school holidays and meals included.

Our curriculum emphasizes curiosity, creativity, and hands-on learning, with a philosophy that combines a nurturing, inclusive environment with increasingly challenging learning.

Our curriculum is unique and crafted by our Curriculum Directors, drawn from CAPS Program for Grade R's and the National Curriculum Framework for other age groups.

Our classrooms are well-organized and divided into interest areas, with a multitude of materials available for various types of play. As children progress, our curriculum becomes both challenging and developmentally appropriate, covering Maths, Language and Life Skills as set out in the CAPS Curriculum, and for children 5 Years and below we follow the ELDAS as recommended in the National Curriculum Framework.

Our teachers act as positive role models for children, promoting social modelling philosophies that encourage tolerance, risk-taking, teamwork, conflict resolution, choice-making, and enthusiasm for learning.

Our traditions are an integral part of our social curriculum.

For more information, please contact 035 786 0187 or email admin@little-rascals.co.za

CURRO HILLCREST

Curro Hillcrest provides the excellent Curro education to learners from Grade 8 to Grade 12. Class sizes are limited to no more than 25, so that your child can get personal attention, and they have a wide variety of specialised subjects, such as Robotics. While teaching takes place in English, they are an IEB school, and also have a school transport option.

Their approach to teaching the national CAPS curriculum is based on project-based learning and self-discovery. This approach allows the high school learners to explore the learning material beyond just the textbook through research, experiments and assignments, while preparing them for the IEB exams in Grade 12.

Regular assessments and tests still take place, but it's important that learners can use their intellectual abilities to make the material real to them in some way.

LRPS EMBERTON HILLCREST
Quality Affordable Education

OPEN DURING SCHOOL HOLIDAYS!

In an exclusive partnership with LRPS, Emberton Pre-School is an oasis of excellence situated within the Emberton Hillcrest Estate. We proudly present a holistic educational journey.

At Emberton Pre-School we provide quality education and a personal program that incorporates a spectrum of activities, extra curriculum, sport and fun outings.

Hillcrest Pre-School stands as a beacon of excellence, providing a transformative educational experience. With our partnership with LRPS we strive to create a nurturing environment where every child can flourish!

**•Sport Curriculum •Aftercare Options •Holiday Program •Fun Outings
•Ipad & Music Classes •Lunch Packs •Privately Owned •Safety Cameras**

www.embertonpreschool.co.za Hillcrest branch, 90 Ashley Drive, Gillitts, Hillcrest.
067 336 2861 Email: admin@little-rascals.co.za

LRPS Est 2005

EMBERTON PRE-SCHOOL HILLCREST

ENROL NOW

curro.co.za

QUALITY
EDUCATION

Where a great future begins

From 2 years
to Grade 12



Preschool:
087 287 9376 | preschool.hca@curro.co.za
Primary school:
087 287 9374 | admin.hca@curro.co.za
High school:
087 285 2148 | admin.hillcresths@curro.co.za

CURRO

HILLCREST

HIGHBURY PREPARATORY SCHOOL

Highbury Preparatory School is an Independent Christian school for boys from Grade R – Grade 7. A school of honour, wholeheartedly rooted in faith, respect and trust. Every boy is known, valued, and developed as an individual.

Our school is home to quality teachers with talent and passion who create an environment where boys feel loved, free and are built for greatness. Partnering with parents, we encourage engagement, ignite creativity and provide a helping hand for boys to boldly break through challenges with courage and confidence. Not only do our boys say "I can" and "I will", they believe they can and they will.

Highbury provides a holistic approach to education covering academic, sports, culture and pastoral care. We honour tradition and inspire excellence. We believe in dirty feet and happy hearts. A place where boys laugh while they learn. We challenge our boys to explore what is right, what is wrong, and how they can strive to be their best selves. We help them discover who they are and how they can become the remarkable men they are destined to be.

We are home to boys who are kind, curious and capable. Boys who will change the world by being supportive husbands, loving fathers and conscious global citizens. Our boys make the world a better place in ways both big and small.

"Boys will be boys," they say. We say: "Boys will be extraordinary".

Weavers' Nest is Highbury's co-educational pre-primary school for Grades 0000 to 00. Where your child is at the centre of everything we do. Through our pre-school programme, we want to inspire your child with a love of learning and give them a solid foundation for the years ahead.

Our dedicated teachers encourage a passion for discovery in a nurturing environment for young boys and girls.

Book a tour at marketing@hps.co.za to experience all that Highbury has to offer.



HIGHBURY
PREPARATORY SCHOOL

Knowing Boys. Since 1903.

Celebrating 120 years!

BOOK A PRIVATE TOUR

marketing@hps.co.za

www.hps.co.za

Highbury is an extraordinary school for extraordinary boys. Tucked away in Hillcrest, Highbury offers an all-round dynamic education for boys from **Grade R to 7**. With a sprawling estate and dedicated, caring teachers, every boy is given the opportunity to achieve his personal best.



HILLCREST HIGH SCHOOL

Hillcrest High School has achieved over **45 years of excellence** having served our local community since 1976 as a co-educational high school offering **excellent value for money** in a balanced and diverse environment where students have a **wide range of academic, cultural, and sporting facilities** to choose from.

The school aims to cater for students **across the academic spectrum**. More able students are extended and encouraged to enter academic competitions. There is also academic support for students who struggle in the form of extra lessons but, most significantly, in the Learner Support Unit (LSU) which, since 2006, has been **catering for students with barriers to learning**.

In addition to academics, the school places emphasis on **discipline and behaviour** as well as **sporting, cultural** and service extra-curricular activities where service to the wider community is encouraged. Hillcrest High seeks to provide a **caring, safe and holistic schooling environment** where diverse individuals can find their niche.



Where Good Results



031 765 12015



admin@hhs.co.za



www.hhs.co.za



KUMON
MATHS ENGLISH

Kumon offers **supplementary** Maths and English programmes to children of **all ages and abilities**.

KUMON study develops:

- ✔ Academic ability
- ✔ Concentration
- ✔ Independence
- ✔ Confidence
- ✔ Good study habits

HILLCREST KUMON CENTRE
INSTRUCTOR:
SHAMEELA SAHADEO

☎ 071 857 1761
✉ hillcrest@kumon.org

PAPER OR TABLET – THE CHOICE IS YOURS!

NOW AVAILABLE ON TABLET **KUMON CONNECT**

KUMON MATHS AND ENGLISH

Lifelong success can start today!

School success depends not only on knowledge and skills but also on the habits and attitudes with which children approach learning.


Evidence shows the characteristics that KUMON cultivates go hand in hand with higher scores in Maths and English, beginning as early as Grade 0 and at least through the end of Grade 1.

Enrolling your pre-schooler in Kumon today can prepare them for the challenges of BIG SCHOOL and beyond and set them up for lifelong success.

The KUMON programme is now also available in digital format. Your child can access KUMON CONNECT on their tablet and study independently with new technology.

Working with Instructor guidance, your child can achieve limitless learning anywhere in the world.



Contact Shameela Sahadeo on 071 857 1761 to find out how KUMON can support your pre-schooler in their early development and beyond.



Roseway Waldorf School

CREATIVE EDUCATION FOR LIFE-LONG LEARNING

Our creative teaching methods are built on an understanding of the way in which young minds and bodies develop at every stage of life. Because we teach children from this clear understanding of child development, a true love of learning is fostered. Our curriculum is diverse and exciting covering everything from Science, Engineering and Technology to Art, Crafts, Music and Drama. Our lessons are dynamic and interactive and our teachers focus on guiding student inquiry, dialogue, and critical thinking, offering each child a holistic and well-grounded education at Roseway Waldorf School.

☎ 031 768 1309 🌐 WWW.ROSEWAYWALDORF.CO.ZA





KEARSNEY COLLEGE

Founded in 1921

With over 100 years of experience, Kearsney offers an ideal boarding environment for boys.

Be a part of one of SA's leading independent traditional boys' schools.

Apply now for Grade 8 2025.

Seize the Day



Enquiries: marketing@kearsney.com or 031 765 9600

RIDING FOR THE WHOLE FAMILY

- LESSONS
- PONY CAMPS
- TRAIL RIDES



CONTACT DEBBIE: 083 269 4945



*Member of ECASA
(Equestrian Coaches
Association
of South Africa)*

 Blue Horizons Riding School
7min drive from Hillcrest (DRUMMOND)

**INTERESTED IN ADVERTISING
IN THIS BROCHURE?**



**Call Fiona Fryer on 082 498 4247 or
email: fiona@fryer.net.za**

Thank you to all our clients for their loyal support this year. We encourage all readers to support the local businesses found within these pages. Not only will you help uplift your community, but meet some fabulous people too.

Highway at a Glance is also available online
www.suburbstaglance.co.za

Index to Advertisers

BEAUTY

Em & Em Skin and Body 6
Salon Sorbet Hillcrest.....35

CHARITIES

Funding the Voiceless.....23
Kloof SPCA.....19
LifeLine.....3
Open Door Crisis Centre.....2
Pawprints.....60
The Highway Hospice.....22

CLOTHING SHOPS

Heathers School & Sportswear.....16
The Swim Shop.....17

EDUCATION

Blue Horizons Riding School.....58

Care Bears Playland.....43
Chatterbox Pre-School & Aftercare.....50
Curro Hillcrest.....53
Emberton Pre School.....52
Happy Feet Daycare.....40
Highbury Preparatory School.....54
Hillcrest High School.....55
Jean's Play-Glen C.C.....50
Kearsney College.....57
Kip McGrath - Kloof.....37
Kip McGrath - Pinetown.....37
Kip McGrath - Westville.....37
Kloof High School.....48
Kloof Junior Primary School.....46
Kloof Pre-Primary School.....45
Kloof Senior Primary.....47

Kumon Centre - Hillcrest.....	56
Little Red Hen.....	51
Roseway Waldorf Schhol.....	56
Saturn Pre-Primary School.....	39
Star College.....	41
Thomas More College.....	49
Westville Senior Primary School.....	40
Whizz Kidz Pre School.....	43

ENTERTAINMENT

Lost in Time.....	28
-------------------	----

ESTATE AGENTS

Wakefields - Karen Davidson.....	IFC
----------------------------------	-----

FRAIL CARE & RETIREMENT

Botha's Hill Rest Home.....	10
David Beare Care Centre.....	11
Fairway House.....	8
Falls Haven Rest Home.....	8
Hillcrest Health & Aged Care Services.....	10
The Village (Pinetown Nursing Home).....	9

GALLERIES

Designer Frame.....	36
The Mall Gallery.....	17

HAIR

Patrick Walsh Hair Design.....	7
--------------------------------	---

HEALTH

In-Med Pharmacy - Pinetown.....	3 & 23
Medicross Highway Sub-Acute.....	5
V Amrit.....	3 & 23
Westville Dental Health.....	2 & OBC
Westville North Pharmacy & Clinic.....	4

INTERIOR DÉCOR

Designer Frame.....	36
Hillcrest Curtains and Blinds.....	IFC

JEWELLERS & GOLD PURCHASERS

Cash One Gold.....	29 & IBC
Paddy's Jewellers.....	33
The Jewellery Workshop.....	23

MOTORING

Silverton Radiators.....	18
--------------------------	----

PLACES OF INTEREST

Bergtheil & Pinetown Museums.....	19
-----------------------------------	----

PLUMBING

Assagay Plumbing.....	31
Zipp Plumbers.....	14

SERVICES

Need-a-Tool.....	60
The Lift Guy.....	27

SHOPPING CENTRES

Lillies Quarter.....	34
Sandy Centre.....	22
Village Market.....	16

SHOPS

Household Plastic Factory Shop.....	35
Sazi Embroidery.....	36
Westville Unleashed.....	IFC

SPORTS CLUBS

Kloof Country Club.....	25
Westville Country Club.....	13



KITTYCARE
GIVING KITTIES HOPE

Kitty Care Durban is a rescue organisation who have Foster Moms all over Durban. They deal mainly with the rescue, fostering and rehoming of Cats and Kittens.

If you would like to adopt please contact
Tatum: +27 64 682 6135
Clare: +27 73 163 9835
www.kittycaredurban.co.za/

 Kitty Care-Durban
 kittycare_durban

EMERGENCY & IMPORTANT TELEPHONE NUMBERS

SACAN.....	08 616 72226
ALL EMERGENCIES	031 361 0000/
.....	031 709 0808
FLYING SQUAD.....	10111
WESTVILLE SAPS	031 267 7343
PINETOWN SAPS	031 325 5079
KLOOF SAPS	031 764 2334
HILLCREST SAP.....	031 765 9134
FIRE DEPARTMENT/ EMERGENCY	031 361 000
EMERGENCY MEDICAL CENTRE	
HILLCREST HOSPITAL.....	031 768 8911
AMBULANCE SERVICES	10177
BREAKDOWN (Water).....	0801 313013
SPCA (Kloof).....	031 764 1212
LOCKSMITH 24 HOURS	083 417 9779

SEE PAGE 2 FOR MEDICAL EMERGENCY NUMBERS



Need-A-Tool

"We've got it if you need it"

WE HIRE AND SELL EQUIPMENT!

FROM HIGH PRESSURE WASHERS
TO ACCESS EQUIPMENT



PINETOWN: 031-705 1470 • HILLCREST: 031-765 4926 • Cell: 082 551 1488 or 082 803 0545
Email: sales@needatool.co.za • Website: www.needatool.co.za

TIME FOR CHANGE?

If you need extra cash, we will buy your secondhand luxury watch from you. Or if you must have the latest look, we have an extensive selection of luxury watches on sale. Repairs of watches and manufacturing of jewellery too.



CASH ONE GOLD
SOUTH AFRICA



Call/Whatsapp Ryan 079 795 0289
sales@cash1gold.com | 2 Village Rd, Kloof | www.cash1gold.com



Westville Dental Health



Dr Patrick Lazarus and Associates

Our team of experienced dentists and hygienists are dedicated to helping you achieve optimal oral health through personalized treatment plans and the latest technology

 031 266 8075  lazarusrooms@gmail.com

14 Glenridge Road, Westville

 www.westvilledentalhealth.com