

No, not Christmas in July -

**A hearty thank you in June
to the many tireless volunteers
who keep the Winchelsea Op Shop
thriving**



7
Successful
Winchelsea
Auskick season
winds up for the
year!

11
Riverside
Amphitheatre to
be discussed at
Forum

18
What's On
in Winchelsea
July/August
Centrespread

27
Thanks to Neil
McInnes who's
volunteered for
his 100th parkrun

The Winchelsea Star

CONTENTS

8 July 2025

FEATURES

Cover Story: Thankyou dinner for Hesse Hospital Auxiliary		
Playgroup at Heritage Alpaca Co	Winch Playgroup	2
Winchelsea Primary School DigiTech	WPS	3
Winchelsea Community Dinner	Jess Boccia	5
Thankyou, Hesse Hospital Auxiliary	Hesse Rural Health	8
Riverside Amphitheatre	Growing Winchelsea	11
RECALL Coles Peanut Butter 1kg	Coles	12
Councillor Catch-Up	Tony Phelps	15
Winchelsea Community Bank Village	Ken McDonald	15
Winchelsea Primary School	WPS	17
Barwon Water Update	Barwon Water	21
Councillor Catch-Up	Tony Phelps	15
Apply for seasonal firefighter role	DEECA	25
Grants for First Nations athletes	State Government	29
New Payroll Tax Cuts take effect	State Government	31

THE ARTS

Cromwell's Quirks "Deal Breakers"	Cromwell Hooper	4
Local musicians get economic boost	State Government	4
Brittany March wins DEVELOP grant	Surf Coast Shire	5

NAIDOC WEEK 2025

Students' NAIDOC Week art	WPS	5
NAIDOC Week is a beacon of hope	St Vincent de Paul	16

COMMUNITY INFORMATION

Community Noticeboard	9
Services & Activities in Winchelsea	14
What's On July/August 2025	18
Winchelsea Facebook Pages	28

HISTORY

Funding to preserve historical records	State Government	10
Mansions that made Winchelsea: Mount Hesse	Michael O'Donovan	13

CHURCHES

Church Services	12
-----------------	----

SPORTS & EXERCISE

Winchelsea Auskick season winds up	Colleen Trehwella	7
Winchelsea Golf Club	WGC	25
NetSetGo wraps up with games	Shae Callahan	7
Parkrun Winchelsea	Neil McInnes	27
Winchelsea Tennis Club	Fletcher Allen	29
Junior Netball	Shae Callahan	33
Blues News	Janet Fletcher	35

Alpaca fun for Winchelsea Playgroup

By Winchelsea Playgroup



Playgroup at Heritage Alpaca Co

Last Thursday, Winchelsea Playgroup ventured out to Heritage Alpaca Co where we spent time with these incredible animals, had opportunity to walk them and learn more about their wool and life.

The children got up close to them, fed them pasture and got to use a lead to walk them up the paddocks.

We discovered that alpacas have an 11 month long pregnancy, and twins are super uncommon. Interestingly they also have multiple stomachs which help them digest their foods.

The showroom was fantastic, we had a feel of their wool which is incredibly soft. There was an assortment of things for purchase.

Another fantastic community playgroup out and about!

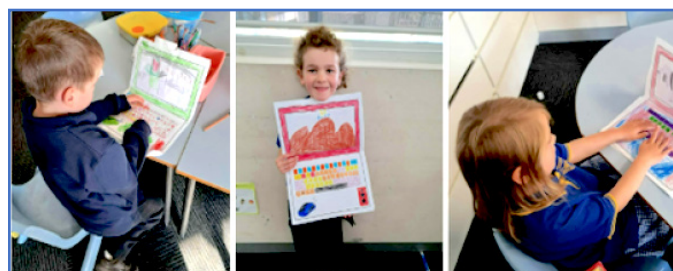


Winchelsea Primary School

DIGI-TECH - WEEK 11

This has been a jam packed Digi-Tech Term! Students should be proud of the effort they have put in. It has been wonderful watching their resilience grow while learning new tech skills.

- **Prep** - We finished our 'computer project,' where we built a computer out of paper. We added security, such as a password and fingerprint/eye scanner.
- **1-2** - We have been exploring the bee-bot application. This also lent itself nicely to the directional language we were learning in maths.
- **3-4** - We have been learning about peripherals and finished the term with a fun animation task. We used the skills we learned in Canva this term, to create a backdrop for our animation.
- **5-6** - We have enjoyed creating 'Pyjama Day' posters and finishing off the term with a fun animation task.



Music, musings and fun at Winchelsea Community Dinner

By Jess Boccia

As the nights get chillier, our community dinners continue to fill our bellies with warm food, create new community connections and gather old friends. This month we were again delighted to welcome some new faces alongside some regulars. As has become the norm, there was lots of movement between tables and seats, and everyone was welcomed and included. Its heartwarming to see our community come together in this way and people reaching out to others they might not usually cross paths with. If you've thought about coming but perhaps feel a bit hesitant, we encourage you to give it a go and know you'll be warmly welcomed.

A definite highlight of this month's dinner was the unveiling of the beautiful old piano in the hall. As locals stepped up to share a tune or two, we were transported into a bygone era where communities gathered in halls like this one to be entertained by the skills of fellow community members, to talk, to dance and to connect. We wondered what the history of this piano was and the past significance of this hall to the generations that have lived in Winchelsea before us.

Back at the shared tables, the conversations were many and varied. A local woman shared an entertaining story of helping some tourists who had managed to hitch hike their way to Winchelsea and was standing outside the top pub attempting to get a lift down the Great Ocean Road at 8pm over the Easter weekend. The younger person was accompanied by their elderly mother and concerned about who might pick them up at this time over a long weekend, the person sharing the story had driven them to Colac and convinced them to spend a night in a motel, rather than continue their nighttime hitchhiking escapades.

Others shared stories about where they had grown up, other places they had lived and what brought them to Winchelsea. Some interesting information was also shared about self-managed super funds and the opportunities they might provide to move money out of large corporations.

Food is often a topic of conversation, and this time was no different with discussions and tips shared for sourcing local produce. Permaculture and organic gardening were also discussed with a view to empowering ourselves to grow more of our own fresh fruit and vegetables.

While the adults socialised, children were busy enjoying some toys, games, art and craft activities which Artsy Jazzy kindly set up for the evening. They were definitely worn out and ready for bed by the time the night ended.

A big thank you to the Winchelsea Star for financial support to get these dinners going, Kentys Bakery who donate top quality dinner rolls for each event, Julie Loon who donated this month's beautiful flowers, St John the Baptist Catholic Church for low cost venue use and of course our wonderful team of volunteers who work behind the scenes each month to make these dinners a reality.

*'Lovely evening with good food, good conversation
and now even music the highlight of the evening.
You must come along too.'*

Dinners are held monthly – last Saturday of month, 6.30pm at the hall on the corner of Harding and Mercer Streets. Bring food to share if you are able. We hope you can join us at our next dinner Saturday 26th of July.



What food do I bring to a community dinner?

Everyone is welcome, regardless of whether you can bring food or not. All contributions are very welcome and the diversity of people who come along enjoy a wide range of foods – you don't need to be a wonderful cook to contribute.

If you are wanting to bring something, but feel unsure or stuck for ideas here are some suggestions:

- A tray of roasted vegetables – either one type such as potatoes or mixed
- Sausage rolls, party pies or other similar foods (a good option if you don't cook or are short on time)
- A salad – even a simple salad such as lettuce, cucumber and tomato with a dressing on the side
- Potato salad, coleslaw or pasta salad
- A quiche or frittata
- A soup made with whatever is in season such as pumpkin or potato and leek
- Roast meat
- A family favourite casserole, oven bake or other dish
- Something that is cooked traditionally in your culture
- Chopped up fruit or fruit salad
- Custard, jelly or ice cream
- A cake, cupcakes or biscuits
- A warm dessert such as a crumble or pudding



Cromwell's Quirks "Deal Breakers"

By Cromwell Hooper

"Oldie" as I aspire to be, few would be so very greatly surprised to find I found my Self wondering: "Just what do people think they mean whenever they reference 'deal breakers' with such gay abandon?"

I asked a few of our favourite online SuperHeroes to find out what they could make of such expressions, to see what the AI world's take would be on the social norms of the literally millions of people using them every day as workhorses, soundboards, crying-shoulders, whipping-boys for their rants and all the general ventings that form humanity's "average" expression of it's collective self online, to its creation.

BrainAI, (reputed to be the leader for multi-tasking background tasks requiring "moving goalposts", and multiple-languages tasks like translating), wouldn't give me an answer at first, instead querying me exactly what I specifically meant, and in what context I wanted to know. I didn't have to grill BrainAI any further, this AI was basically reflecting my own concerns regarding the cavalier approach so commonly deployed by the people deploying this expression, and would not be susceptible to such traps as making the broad-brush-stroke declarations many of us humans are ...

Gemini, (the AI voice of your google search results), distills them down to "untenable aspects or conditions". Nice neat tidy definition that, got to admire Gemini's succinctly, and even still I can't help but suspect such understandings are as 'oldie' as mine ...

Prometheus, (which drives the Microsoft Copilot digital assistant, well competent at coordinating the efforts of junior AI-lings, as well as SignifAI for those of us involved in any kind of DevOps or Site Reliability Engineering), tells me they are not mere symbols, rather, powerful assertions of boundaries, clear lines that warn, "this is a core value for me!", or, the implied corollary: a weapon to wield in protection of one's mindsets being exposed or one's fears being faced.

So, what can a human do with all this? We're all different, some say, I especially so ... being all that as it may, in the mischievous playground of my mind, (amongst all the other butts for my irreverent tauntings), is the Altar of the Individual Divine, where the initiators prepare, (amongst their other altar-furnishings), the sacred Deal Breakers, with which they point to, and summon the protection of, the 4 Cardinal Directions of Identity, Otherness, Defensiveness and Withdrawal ... it's an highly tongue in cheek model on my part, but like most humour, it's just a way of facing what I think of as uncomfortable truths

Donning my "+2 Hat of Aspirational Levity™", I might just interpret it as that delicate balancing act we attempt twixt clarity and rigidity, but do any of us really have the Grace to deploy our "deal breakers" with sufficient humility to deserve this interpretation? Do we even try to respect each the others' broken bits and tender spots?

As critturs craving connection and companionship, perhaps we could craft even better rituals of attraction and repulsion? By way of example, how do you think matters might appear, were we to push with just such vigour our "Deal Makers"?

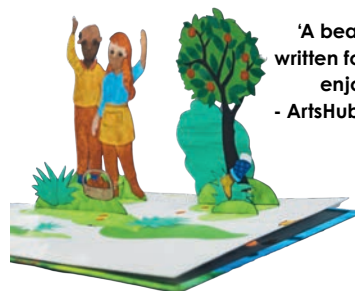
Food for thought, well wishes in All,
Cromwell.



THE PAPER ESCAPER A Terrapin production by Gita Bezard
Tuesday | 29 July | 10am & 1pm

A bright new puppetry work from Terrapin about determination, friendship and the power of following your own path.

Written by Gita Bezard of *The Last Great Hunt*, this delightful, funny and inspiring production features inventive puppetry, deft physical performance and an intricate and engaging soundtrack.



'A beautifully crafted work written for the young and to be enjoyed by all ages.'

- ArtsHub, Lesley Graham, 2023

★★★★ ½ stars



Terrapin



BOOK NOW:

copacc.com.au | Box Office | 03 5232 9418

Ticket \$20 | Concession \$18

Children (12 years or under) \$16

COPACC Members \$16

School Group \$15 per student



Local musicians get economic boost

By Victorian State Government

A \$3 million boost for Victorian musicians, bands, venues and festivals has been announced, designed to strengthen the industry and the jobs and communities it supports.

The latest round of **10,000 Gigs: The Victorian Gig Fund** will fund 136 venues to stage paid gigs by local artists.

Recipients include the iconic pubs, clubs and band rooms that make Victoria great – like the Wesley Anne, Howler and The Tote – alongside unexpected spaces including Echuca Aquatic Reserve and Coal Creek Community Park & Museum.

The Live Music Festivals Fund will support 11 festivals with grants up to \$50,000 to help put on new or existing events, including LGBTQIA festival Gaytimes, Castlemaine's Town Folk Festival, Phillip Island's Ocean Sounds, Queenscliff Music Festival, Port Fairy Folk Festival and Riverboats Music Festival.

Music Works will provide more than \$940,000 of grants, backing emerging and established artists, supporting them to create new music, tour and reach new audiences. Among the 81 recipients are Warrnambool's Find Your Voice Collective and musician and disability advocate Eliza Hull.

In addition, more artists will have opportunities to develop their careers through Multicultural Arts Victoria's NEWPRINT program, designed to support artists, producers and creative workers from culturally and linguistically diverse communities to break into the music industry and **take their careers to the next level.**

For a full list of recipients visit creative.vic.gov.au.



Brittany's love of nature and artistic endeavors have won her a DEVELOP grant to take her talent further

Story Surf Coast Shire, Photo Zoe Strapp

Accomplished artist Brittany March is one of nine individual and group grant recipients through Council's annual DEVELOP program which supports emerging, mid-career and established creatives to explore new horizons. Individuals can receive \$3,000 and groups \$5,000.

Brittany focuses on fine art, drawing inspiration from the natural world for hyper-realistic drawings and paintings. She is also skilled in graphic design and illustration, leads workshops and tutors.

Now her DEVELOP project is taking her into personally unexplored territory working with clay, silicone and fibreglass to create a prototype sculpture of a southern right whale, measuring up to a metre in length.

The DEVELOP grant is supporting mentoring for Brittany from acclaimed Surf Coast sculptor Mark Tringham. She will also receive training in fibreglass casting at a Torquay surfboard factory.

"This project will deepen my creative practice by developing skills needed to transition into public sculpture," Brittany says. "The work is inspired by the Surf Coast's rich marine environment and the iconic migration of the southern right whale. I have always loved wildlife, and creating artwork which honours the natural world. As a surfer going into the ocean most days you naturally have a connection with nature and wild places, and I think it's nice that the project involves the surf industry. Obviously Torquay was kind of born from the surf industry, so it's a nice little nod."



Some of the DEVELOP 2025 recipients are:

- Brittany March: Developing public art and large-scale sculpture skills, with supporting mentorship, through creation of a fibreglass whale prototype.
- Michelle Buggy: Developing an online creative arts experience featuring daily videos, and interviews with artists.
- Erin Reinboth: Connecting young people with artists and professionals through workshops, mentoring and exhibitions.
- Ruth Blackhirst: Purchasing a larger kiln to expand sustainable functional art production.
- Andrea Shaw: Exploring textile painting on repurposed fabrics to integrate sustainability.
- Writhe: Researching performing arts groups to assess capacity-building needs in Surf Coast Shire.

Find out more about Council's DEVELOP grants for artists and creatives at surfcoast.vic.gov.au/DEVELOP.



NAIDOC WEEK 6-13 July 2025

Art work by students at
Winchelsea Primary School
winchelsea.ps@education.vic.gov.au
Website: www.winchps.vic.edu.au



✂ CUT HERE & STICK ME ON YOUR FRIDGE! ✂

SURF COAST ARTSTrail 2025

Saturday 2 & Sunday 3 August
10am-4pm



Begin planning your weekend!

Contact us via email artsteam@surfcoast.vic.gov.au or phone **03 5261 0600**
Follow us on Facebook & Instagram [@surfcoastartmatters](https://www.instagram.com/surfcoastartmatters)

Photo: Lauren McQuade Handmade Credit: Bobby Dazzler Photography

Wadawurrung,
Gulidjan, Gadubanud Country

surfcoastartstrail.com.au [#SurfCoastArtsTrail](https://www.instagram.com/surfcoastartmatters)







Lupton BUILDERS
SPECIALISING IN QUALITY






REGISTERED
Building Practitioner

- NEW HOMES
- ALTERATIONS
- CARPORTS
- BATHROOMS

- EXTENSIONS
- DECKS
- VERANDAHs
- WINDOW REPLACEMENTS

- RENOVATIONS
- PERGOLAS
- RE-GLADS

Leigh Lupton
0438 840 104

LEIGHLUPTON17@GMAIL.COM

Est. 1977



KINDLING

Winter is almost upon us
It's time to stock up on kindling
to keep that fire going

Large bags for only \$7
PICK UP or DELIVERY

Contact the Men's Shed
0407839139
or call in at 51 Hesse Street



Winchelsea Taxis is now Surfcoast Taxis

Our fleet of vehicles are growing to all late models and we are covering an extended area including Winchelsea, Colac, Bannockburn, Inverleigh, Great Ocean Road and Geelong.
We have a fleet of 10 seater Maxi Vans, all with capacity to carry wheelchairs.

Surfcoast Taxis Pty Ltd
All Bookings: 0408 325 992
Fax: 5267 2699
Email: bannotaxis@gmail.com
 (Admin or Stan 0429 672 888)
 66A Batson Street
 Winchelsea 3241





Book your next ride with
smartHAIL

Book

Track

Pay

Rate




Accounts NDIS provider. TAC, DVA etc

NDIS provider number 4050001044
NDIS provider number 4050001048



SUNNY GYM
GYM BUT JOYFUL

Strength training and martial arts
for the whole family in Winchelsea

PERSONAL TRAINING

STRENGTH CLASSES

KIDS KUNG FU

BOXING

0401417387
sunnygym.com.au
evan@sunnygym.com.au

*group classes only, excludes personal training.



Intro Deal:
\$35 for
2 weeks*



Moriac Veterinary Clinic

0447 781 089

PHONE 24 HOURS

784 Hendy Main Road Moriac

info@moriacvet.com

www.moriacvetclinic.com.au

HOURS // Monday - Friday: 8am - 5pm

- Domestic and Commercial hire equipment
- Digging and Earthmoving equipment
- Firewood
- LPG for domestic and commercial requirements

- Industrial welding gas
- New trailers and trailer repairs
- Stockists of Royal Oil Lubricants products

Give Chris and the Team a call on **5232 1177** or email info@colachire.com.au

www.colachire.com.au

101 Wallace St Colac 3250





STORAGE KING

SIMPLE STORAGE SOLUTIONS

- Personal & Business Storage
- Boat, Caravan & Vehicle Storage
- High Security Premises
- Individually Alarmed Units
- Electric Gate Access
- 7 Day Access & CCTV

YOUR STORAGE PROBLEMS SOLVED

5267 3116
6 ALSOP DRIVE, WINCHELSEA 3241



A successful Winchelsea Auskick season winds up for the year

By Colleen Trehwella, Auskick Coordinator

Wrap up of Winchelsea Auskick for 2025!!

On Saturday we have our mini games at the halftime of the Senior Football game, it was so amazing for the kids to be able to run out with a guard of honor from the senior team followed by presentation of their medals and certificates by our reserves players.



All families enjoyed afternoon tea and a time for photos. This year saw us with a record of 50 registrations which is absolutely fantastic.

Once again to the faithful helpers on a Thursday night thanks very much, Brendan, Dan, Toby, Josh, James, Trent, Iain and Benji and anyone else I may have missed. And to the committee once again.

See you in season 2026.

NetSetGo wraps up with fun, games and a bright future ahead

A huge thanks goes to Elizabeth Humphries and her family for inspiring leadership in the NetSetGo netball program

By Shae Callahan

The final whistle has blown on what has been a fantastic NetSetGo term, with our youngest netballers finishing up the term by putting all they've learned into action through some exciting mini game simulations. From learning the basics of throwing, catching, and footwork to understanding positions and playing as a team — it's been an absolute joy to watch these children grow and thrive over the past 10 weeks.

With over 20 enthusiastic participants aged 5 to 10, the energy, improvement, and smiles each week have been a true highlight for our club. If these talented youngsters are anything to go by, the future of Winchelsea netball is in very safe hands.

A massive shout-out goes to 15-year-old Elizabeth Humphries, who took on the incredible task of planning and coordinating the NetSetGo program each week. Her leadership, creativity, and dedication have been inspiring. With the support of her younger sister Hannah (12 years old) and their mum, this trio created a fun, inclusive and supportive environment that kept every child engaged and excited to return each week. What a brilliant example of youth leadership in action!

As the NetSetGo season wraps up, we now pass the baton to our Under 10s coaches — Hannah, Rachael and Shanley — who will guide the next steps of development on the court. We can't wait to watch this group continue to grow in confidence and skills.

A heartfelt thank you to all the families, volunteers and young players who made this term so special. Let's carry this momentum into the next chapter — the future is bright in blue and white!



* Farm & Machinery Sheds * Residential Sheds
* Garages & Carports * Patios

Offering a diverse range of shed kits including C section, RHS, and U Beam, ensuring you have the options to create your ideal structure.

We service Colac, Ballarat, Geelong and surrounding areas. Check us out on Facebook or visit our website

huttonbuild.com.au

0488 031 332

sales@huttonbuild.com.au



Thankyou, Hesse Hospital Auxiliary

By Hesse Rural Health

Last Thursday on the 26th June, Hesse Rural Health (Hesse) held an appreciation lunch to acknowledge and thank Hesse's Hospital Auxiliary volunteers for their dedicated service including to the Winchelsea Op Shop. From 1st July the volunteers commenced operations with their new entity Winchelsea Community Op Shop Inc.

The lunch, generously held at Birregurra Grocer and supported by Otway Pork had a festive in June theme, where a merry time was had. The important part the Hospital Auxiliary has played in assisting Hesse and its former entities to make a valuable contribution to the Winchelsea community over the past 69 years was celebrated and acknowledged.

The Winchelsea & District Hospital Ladies Auxiliary was established in the late 50's under the By-Laws of the Winchelsea & District Hospital, now known as Hesse Rural Health. The group most recently comprised around 35 enthusiastic members who continue to volunteer tirelessly to raise important funds for the health service. Over the years, the Auxiliary's fundraising activities have included casserole luncheons, street stalls, raffles, Devonshire teas, dinner dances, Hesse event catering and even a regular presence at the annual Country Dahlias event. Each year the Auxiliary would also host Christmas parties for Hesse's aged care residents, and provide an end of year gift that was greatly appreciated.

After a few years of running lucrative trash and treasure stalls, an idea sparked, to open and run their own Opportunity Shop. So, in January of 2011 that's exactly what occurred, and the Auxiliary's Op Shop went from strength to strength. Unfortunately, on the morning of Monday 9th November 2020 the Op Shop caught fire in a suspected arson attack and the Auxiliary took a well-earned break while this devastating loss was adjusted to, before the focus turned to fundraising for a new shop and opening a temporary Op Shop.

The volunteers' resilience shone, as the new shop was established in rental premises at 10 Willis St and it returned to being a lifeblood for the Winchelsea community, providing once again low priced items to the community, along with great friendships to the passionate volunteers and their many customers.

Hesse would not be where it is today without both the financial and volunteer support of the Auxiliary. Hesse offers thanks and gratitude to all the volunteers that have contributed to the great outcomes the Auxiliary have assisted Hesse to achieve for our community over the many, many years.

Hesse also continues planning to redevelop 44-46 Main St, Winchelsea as a future site for the Op Shop, and on completion

this building will be made available to the new entity of Winchelsea Community Op Shop Inc. At the appreciation lunch, the Auxiliary Executive presented Hesse with a donation of \$199,000 from Op Shop proceeds towards this redevelopment, which is in addition to the \$200,000 previously donated by the Auxiliary to commence the project planning.

The Hesse Board of Directors remain committed to supporting the new arrangement and look forward to continuing this important relationship under the new structure as Winchelsea Community Op Shop Inc. and working together to remain supporting the local Winchelsea community.



Members of the Hospital Auxiliary celebrate with Hesse CEO Carissa Brock and Board Chair Ian Whiting



Presentation of Hospital Auxiliary donation cheque to Hesse
L-R Hospital Auxiliary Reps Pam Kelly (Vice President),
Pixie Heath (Treasurer), Pat Crosbie (President) with
Hesse Reps Carissa Brock (CEO) and Ian Whiting (Board Chair)



www.onebodychiropractic.com.au
03 52672240 Shop 4/21 Hesse St Winchelsea

Family Healthcare - Naturally through Chiropractic

Get out of pain and back to life.
Build a foundation for lifelong wellness.
Perform at your absolute best.

Here for your Vitality...





Winchelsea Star COMMUNITY NOTICEBOARD

email editor@winchelseastar.org.au or leave at Winchelsea IGA



Help is available
Speak with someone today
Available 24 hours

13 11 14

WINCHELSEA GIRL GUIDES

Welcomes girls 6-15 yrs

Mondays, 4.30pm-6pm during school term
St John's Catholic Church Winchelsea
Guiding provides fun, friendship, and
adventure. Developing teamwork, and
leadership skills, whilst girls achieve goals,
improve communities
and grow in confidence.

3 FREE sessions to come along and try.

Yvonne Orchard ph 0448 672 630
or Lily Dell Rennie ph 0428 936 441

DIAMOND DOT DAY XMAS IN JULY

Saturday 12th July
Senior Citizens Rooms
Harding Street Winchelsea
\$10 per head
includes lunch and afternoon tea.
RSVP Tracey 0427500649
or see her at the bakery.



Social Bridge is played
TUESDAYS 10 AM - 12 NOON
Senior Citizens Centre
36 Harding Street Winchelsea
New players always welcome
Elaine Atkinson 0458 009 616

SHOPPING AND A CUPPA AT WAURN PONDS SHOPPING CENTRE

for Winchelsea Seniors Card Holders

Contact Jill on 0427 633 277 to book

Pick up from your home between
9am and 10am, leave Waurn Ponds at
1.30pm and **drop off at your home.**
You will get a reminder call.

12-seater Community bus so spots are
limited!

Cost: Gold Coin Donation

**Must have a Seniors Card to be eligible.*

CUBS AND JOEYS

For information, or to get involved,
contact Marie McPadden 0409330147
or mcpadden630@bigpond.com

WINCHELSEA TENNIS CLUB JUNIOR COACHING

Mondays from 3.30pm
with experienced Nicole Mullen, \$10

FOR SALE - PINE CONES

WINCHELSEA LIONS CLUB

has full bags of pine cones
\$5 per bag.
Raymond 0406 371 239.

WINCHELSEA MEN'S SHED

For the Community

NEW MEMBERS WELCOME

Every Wednesday from 9.30am
51 Hesse Street, Winchelsea

KINDLING/OFFCUTS \$7.00 bag

Pickup Wednesdays 9.30-2.30
For delivery, call Bill 0438 083 373

NESTING BOXES Birds/animals

NEED A JOB DONE?

Woodworking, Furniture Repairs
Call in Wednesdays to order

Ray Atkinson (Co-ordinator)
0407839139
winchmenshed@gmail.com

RUNNING GROUP

Winchelsea has a small run group.
Its more of a social run, jog and chat.
We wait for slower runners and walk
when one of us needs a rest.
The aim is 10k with the option of
8 or 5k it's up to you.
To finish, a coffee at La Hoot.

Sunday mornings 8am at La Hoot.

WINCHELSEA LIONS CLUB

Recycled compressed paper logs

Great for wood burners, fires and fire
pits. Burn for over an hour, ash great for
gardens, no chainsaw needed.
Pack of 4 logs \$5, small rolls \$2
Contact Alan 0476 47522

WINCHELSEA PICKLEBALL

Pickleball is back at Winchelsea! The
Tennis Club are running this every
Wednesday at 7:00PM at the Winchelsea
Leisure Time Centre! Only \$5 a person
All equipment supplied
Wear suitable footwear
Lesley Mathison 0438 672 197

WINCHELSEA OP SHOP

BOOK SALE

Cheryl Mawson

The Winchelsea Op Shop will be having
their \$5 bag of books again ready for the
School Holidays.

Sale will commence on Friday, July 4th,
through until end of the holidays.

We have lots of good books so do not
miss out on your winter reading.

Thanks to the community for your
ongoing support to the shop once again

DEFIBRILLATOR MISSING

The newly installed Defibrillator
outside the Netball change rooms has
been missing for some weeks.
If it could be replaced asap that would be
great, no questions asked.
These Defibrillators save lives

SEEKING QUALIFIED SWIM INSTRUCTORS

Winchelsea
Primary School



**DECEMBER 1ST
to
DECEMBER 12th
Term Four
2025**

Our school's Extensive
Swimming Program starts
in Term Four – December
2025 at the
Winchelsea Pool.
Please contact the school if
you have any questions or
wish to forward your
interest in the positions of
Swim Instructors in this
program.



Winchelsea Pool
12 Barwon Terrace
Winchelsea

Ph:5267 2134

Email: winchelsea.ps@education.vic.gov.au

Funding given for the preservation of historical records

By Victorian State Government

The Government is funding community groups to capture, preserve and share the unique stories and histories of Victoria. 17 historical groups, museums, libraries and not-for-profits are new recipients of the 2025 Local History Grants Program.

Recipients include the Bonegilla Memory Project, awarded \$11,490 for their work collecting memories of ex-residents of the Bonegilla Migrant Camp, highlighting the stories of this significant heritage site.

First Nations history will be highlighted in William Barak's Visual and Material Legacy: A Catalogue for Community through \$15,000 to the Wurrindjeri Woi Wurrung Cultural Heritage Aboriginal Corporation.

The Down Syndrome Association of Victoria has been awarded \$12,623 for archiving their heritage collection back to 1978, establishing a legacy to educate, inspire and inform all Victorians.

Victoria's important post-war migration story will be explored, with \$14,850 to the Australian Jewish Historical Society Victoria for the project Community of Fate: Tales of German Jewish Migration to Melbourne (1938 – 1949).

Other funded projects include newspaper digitisations, oral histories, historical signage, and preservation equipment.

Further details can be found at prov.vic.gov.au/community/grants-and-awards/local-history-grants-program

This Week's Winchelsea Star

Editor - Cerrie Forgan
Designer - Susan Corbh

Winchelsea Star

Your Weekly Community Newspaper

Since 1977

**Next Production Coffee
Meeting @ Sweet Thyme
Saturday 30 July 2025 9-10am
Everyone Welcome!**

The Winchelsea Star

**Send your stories and photos
news@winchelseastar.org.au**

LOCAL NEWS and ARTICLES WELCOME

Include name and address of the sender
Email news@winchelseastar.org.au OR
Leave hard copy at IGA Supermarket

DEADLINE 5pm Fridays

4pm Sundays - hard copy articles left at IGA
6pm Sundays - sports results and weekend events

EDITOR 5273 0295

Leave a message

ADVERTISING

advertising@winchelseastar.org.au 5273 0294

FREE DIGITAL SUBSCRIPTION

www.winchelseastar.org.au

JOIN US ON FACEBOOK

facebook.com/TheWinchelseaStar

production

Editors: Cerrie Forgan, Yvonne Stevens, Judy Cameron
Advertising: Sasha Gauntlett, Neil McInnes
Design: Susan Corby, Tony Phelps
Printed by: Winchelsea Community House
Website by: Winch Websites

committee

President: president@winchelseastar.org.au
Neil McInnes
Treasurer: treasurer@winchelseastar.org.au
Cathy Cheadle
Secretary: secretary@winchelseastar.org.au
Tony Phelps
Members: Mick O'Mara, Linda Carter, Susan Corby
Sasha Gauntlett, Judy Cameron,
Yvonne Stevens, Cerrie Forgan



© Winchelsea Star Org. Inc. All rights reserved
Winchelsea Star Organisation Inc.

Reg. No. A0053999F ABN 75 941 529 279
winchelseastar.org.au PO Box 5 Winchelsea 3241

Views expressed are not necessarily those of the Winchelsea Star or Committee. The Winchelsea Star reserves the right to edit or not publish any article.

Riverside Amphitheatre to be discussed at Forum

By Growing Winchelsea

A stepped grass amphitheatre with flat steps suitable for market stalls, picnics and other uses combined with an enlarged covered deck space which doubles as a stage was identified as an important project in Growing Winchelsea - Shaping Future Growth 2015 strategy.

The concept seeks to link existing projects such as native tree planting, a timber boardwalk and concrete path connecting to the River Walk loop.

"Detailed drawings and photos were highlighted in the strategy and timing is now right to gather community input and support to progress this initiative," said John Tebbutt, President of Growing Winchelsea.

At the Community Forum to be held on Monday 14 July 2025 there will be an opportunity to comment on the concept. Already there has been good feedback received together with interest shown. Our next step is to advance a Community Project Proposal with Surf Coast Shire with seeks to undertake its feasibility, identify the scope of the project and other elements required to push forward with the project.

"As our population grows and visitation to our town increases the amphitheatre not only provides a productive open space linked to the Arboretum Trail but allows a diversity of event tourism opportunities to develop," continues John.

Come along at 6 pm to the Senior Citizens Centre @ 36 Harding Street Winchelsea, network and enjoy a warm meal before the Forum commences with presentations about the Winchelsea Place planning process and the Windfall Gains Tax.

Please RSVP via email to Elaine Atkinson secretary@growingwinchelsea.com or mobile 0458009616.

GROWING WINCHELSEA MEETING

The Winchelsea Place Plan
Windfall Tax

MONDAY, 14 JULY 2025
AT 6:00 - 8:30 PM
SENIOR CITIZENS CLUB

At our community meeting, you'll have the opportunity to:

- Find out how to have input into our new strategy
- Learn more about the Windfall Tax from the experts
- Hear about proposed Amphitheatre and share your views

This is your chance to make a difference in your community and help shape its future

RSVP by 11/7/25

☎ 0458009616 🌐 www.growingwinchelsea.com



Winchelsea Playgroup has been the happy recipient of a grant from a Surf Coast Shire Council's Quick Response Grants Program. This program is also open to other community organisations

By Surf Coast Shire

Smiles and laughter from children at Winchelsea Playgroup are proof that Surf Coast Shire Council's Quick Response Grants Program can make a big difference for community organisations.

The volunteer-run playgroup has limited money-raising capacity with its strong focus on keeping costs at minimum for families, but successful application for a 2024 Quick Response Grant enabled purchase of indoor play equipment.

"It has certainly been a hit!" volunteer Bec Lane said. "It has seven or eight large pieces of soft play which can be put together in different configurations, creating different obstacle courses for children to play on and run and crawl across.

"It means the children can still burn energy with some climbing and fun indoors when it is inclement outside, and we wouldn't have been able to purchase it without the grant."

With the 2025 Quick Response Grants Program opening on 1 July, Bec encouraged community organisations to consider

applying. The program offers grants up to \$3,000 to help groups and organisations make minor equipment purchases, expand activities or pursue clever and creative projects that help community to thrive.

"The application was straightforward. I've done lots of grant applications and what stood out to me with this one was the quick response, it definitely lived up to its title," Bec said.

Cr Tony Phelps said the grants program would remain open until the allocations pool of \$30,000 is exhausted. "We encourage community organisations to examine the application guidelines and consider making submissions," Cr Phelps said.

"Finding funds for things like equipment purchases or new projects can be a challenge. These grants offer support in quick turnaround time and can have such significant impact for organisations making positive differences in our community."

Find details at surfcoast.vic.gov.au/Grants.

Winchelsea Churches



Winchelsea Uniting Church

0475 777 301

uca.winchelsea@gmail.com

Hesse St, Winchelsea 3241

Services 9.30am Sundays

St John the Baptist Catholic Church

0404598558

Father Joseph Panackal

Harding St, Winchelsea 3241

Winchelsea @ 5pm Sat. Jul. 5/12/19/26

Anakie – NO MASS

Meredith @ 9am Sun. July 13, 27

Bannockburn @ 11am Sun. July. 13/20/27

Inverleigh @ 4pm Sun. July 20

St Thomas' Anglican Church

0477 672 042

Rev Barbara Colliver

stthomaswac@gmail.com

Barwon Tce, Winchelsea

Service 10am Sundays

Thought for the Week

“God invites us to join the Divine plan to ultimately conquer sin, and chaos and move the world to completion and peace.

Accept God's offer of partnership and use your creative efforts to end suffering.”

Have a Blessed week.

**John Bader,
Former Lay Preacher**

IMPORTANT SAFETY RECALL

Coles Smooth and Coles Crunchy Peanut Butter 1kg

By Coles

Coles is recalling Coles Smooth Peanut Butter 1kg and Coles Crunchy Peanut Butter 1kg, sold between 01/05/2025 and 30/06/2025 at Coles supermarkets and Coles Online nationally with a Best Before date of 05/02/2027, due to aflatoxin contamination

A jar of peanut butterAI-generated content may be incorrect.A jar of peanut butterAI-generated content may be incorrect.

The product is:

Coles Smooth Peanut Butter 1kg and Coles Crunchy Peanut Butter 1kg

Best Before date: 05/02/2027

Dates sold: Between 01/05/2025 and 30/06/2025.

Food products containing aflatoxin may cause illness if consumed. Any customers concerned about their health should seek medical advice.

Customers can return the product to any Coles supermarket for a full refund. Coles Online customers can receive a full refund or credit by contacting Coles Online Customer Care on 1800 455 400.

We apologise to our customers for any inconvenience. Customers seeking further information can contact Coles Customer Care on 1800 061 562.



Homebuyer Fund extended

By the Victorian State Government

The Government is extending the popular Victorian Homebuyer Fund to help more Victorians achieve their dream of owning a home.

Since it was launched in October 2021, the fund has helped 15,400 Victorians buy a home. More than two-thirds are first home buyers, with 25 to 44-year-olds the largest group.

The short-term extension – until the Government's investment of \$2.8 billion is exhausted - will enable new applications beyond the original 30 June cut-off. This will help an estimated 2,600 more Victorians buy their own home, bringing the total to 18,000 homebuyers assisted since its launch.

After this, Victorians will transition to the Commonwealth's Help to Buy scheme, which will continue the work of the ground-breaking Victorian scheme.

The Victorian Homebuyer Fund's shared equity arrangement makes it easier for more people to buy a home, by reducing the amount of money eligible participants need to enter the market

and relieving Victorian homebuyers from the extra financial burden of lenders' mortgage Insurance.

The median Victorian Homebuyer Fund participant's mortgage repayments are \$250 lower per month – saving \$3,000 per year – compared to if they purchased the same property with a traditional 80% loan to value ratio loan.

Participants are also eligible for other first home buyer supports, including stamp duty exemptions and concessions and the First Home Owner Grants of \$10,000.

Since the fund's launch, more than 15,400 Victorians have been supported to buy their own home, with a median purchase price of \$615,000.

The Victorian Budget 2025/26 is delivering \$61 million to extend the stamp duty concession – slashing stamp duty on eligible off-the-plan apartments, units and townhouses for another 12-months.

An additional \$24 million will also deliver new planning controls for the 50 recently announced Activity Centres, ensuring we get the planning right and give certainty to communities and industry about how these places will grow.

history of winchelsea

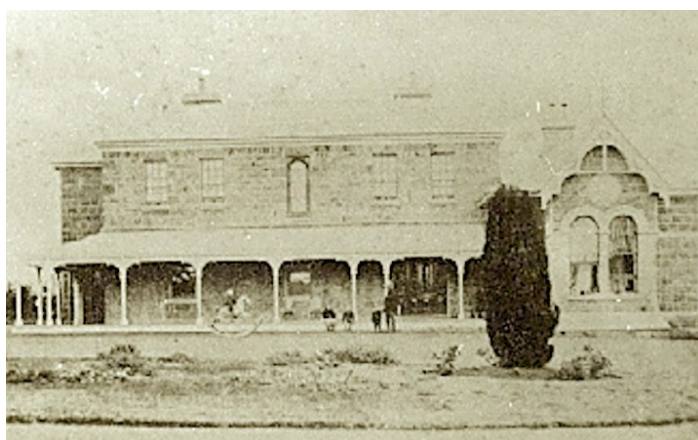
Mansions that made Winchelsea: Mount Hesse

The stables and the woolshed, constructed 1849, are amongst the oldest in Victoria

By Michael Donovan

All Winchelsea locals know and love the famous Barwon Park mansion, but Barwon Park was only one of many such properties in its day.

In previous weeks we have looked at Wormbete and Ingleby as stunning local examples of early founding mansions, but along with the Hopkinses and Armytages came early pastoralists John Highett and William Harding, who first established the Mt Hesse run, situated to the north and west of the Austin's Barwon Park run, on the west bank of the Barwon river on Gulidjan Country.



Mt Hesse

Mt Hesse has a narrow frontage to the river north of Barwon Park, stretching along the eastern shore of Lake Murdeduke, which was traditionally a site of permanent occupation of the Gulidjan people.

The stables and woolshed constructed 1849 are amongst the oldest surviving in Victoria.

The property was named after George Brooks Legrew Hesse, who famously went missing with Joseph Tice Gellibrand, as explored in previous weeks in this article.

It was later owned by the Geelong merchants William Timms and John Wilson, who owned the property from 1853 to 1856. William Timms, who by 1849 was Geelong's biggest exporter of wool, became sole owner of Mount Hesse in October 1856 when he bought John Wilson's share for £17,500.

The property was later broken up and acquired by Timms' sons and run as three separate properties, 'Eurack', 'Mountside' and 'Mount Hesse', Mount Hesse being the homestead section and comprising 15,866 acres (6,400ha).



Mt Hesse Shearing Sheds



Mt Hesse Stables

The main homestead was built c.1856 for William Timms (Senior) to the design of Backhouse and Reynolds and was later extended by Davidson and Henderson for William Timms (Junior) in 1873.

In 1941 the house was severely damaged by fire, although it was re-built in 1947 using some of the original materials. The Lodge was built in 1873 for William Timms (Junior) as a three roomed gate lodge and it sits adjacent to the original main gate entrance.

Today Mt Hesse station is still operating and is one of the district's most successful merino stations, acquired by Südwole Group in 2002, it combines centuries-old traditions with cutting-edge science to produce natural high-quality wool.



Mícheál P O'Dhonnabháin has lived in the Winchelsea area since 2010.

Michael completed a Bachelor in History and Anthropology and a Master of Cultural Heritage at Deakin University, then went on to complete a PhD at Federation University, focusing on colonial and European collections of Indigenous Australian Cultural Heritage. Michael lectured at Federation and Monash Universities, lecturing in World History, Folklore Studies, Indigenous Studies and literary studies. Michael has worked in museums and cultural collections across Victoria, and can usually be seen in and about Winchelsea with his wolfhound.

SERVICES & ACTIVITIES IN WINCHELSEA

VLINE TRAIN SERVICES

TO MELBOURNE:

Mon - Fri 6.21(coach) 07.55, 11.10, 14.04, 16.58, 19.21
Sat - Sun 9:34, 14.04, 16.58 19.18

TO WARRNAMBOOL:

Mon - Fri 8.58, 11.51, 14.46, 17.28 (coach), 18.43, 20.53
Sat - Sun 8:48, 11.41, 14.46, 20.38



COUNTRY WOMEN'S ASSOCIATION

7pm second Wednesday of month
Winchelsea Senior Citizens' Hall

Join us. *A role for everyone*



Nationally accredited training to help our community.
Pop in to meet your crew **Wednesdays 7:30pm**

Winchelsea Unit 325 Mousley Drive 0400 121 943

Winchelsea and District COMBINED PROBUS CLUB



Senior Citizens Rooms,
Harding St, Winchelsea.
New members always welcome.
Enquiries Lorraine 0417 467 927



SOCIAL BRIDGE

Every Tuesday 10.30 am - 1.00 pm
Senior Citizens Centre
36 Harding Street Winchelsea
New players always welcome
Contact Elaine Atkinson 0458009616

WINCHELSEA TRANSFER STATION

55 Cressy Road, Winchelsea

Tuesday 2pm-4pm Saturday 1.30-3.30pm
Thursday 2pm-4pm Sunday 9.30-12.30pm



Closed on Christmas Day,
but open on other public holidays
that fall during their normal operating hours.
www.surfcoast.vic.gov.au/disposalsites



WINCHELSEA GIRL GUIDES

Our Unit meets at the Catholic Church Hall,
Harding St Winchelsea each Monday 4.30pm-6pm
All girls 5yrs- 15yrs Welcome!
Contact Yvonne Orchard 0448 672 630
or Lily Del Rennie Ph. 0428 936 441



1st Modda & 1st Winchelsea

SCOUT GROUP

Joeys: Tuesdays of school term 5-6pm
Cubs: Mondays of school term 6:30-8pm
Scouts: Tuesdays of school term 6:30-8:30pm
All at Modewarre Hall, Cape Otway Rd
Venturers: Wed at Walton's Rd Venturer Den
Contact Marie McPadden 0409 330147

BUS TO THE HUB



For reservations on the weekly bus
to the Eastern Reserve Hub,
please phone 52671202.

SURF COAST MOBILE LIBRARY

Hesse St, Fridays, 2pm-5pm

Surf Coast Mobile Library
parked in Hesse Street (outside Shire Hall)
Fridays 2:00 and 5:00pm unless it is a Public Holiday.

WINCHELSEA TAXI

0429 672 888 or 5267 2888

Wheelchair accessible
10 seater bus available.

WINCHELSEA PLAYGROUP

Every second Thursday 10am-12pm
St Thomas Anglican Church Hall
cnr Barwon Tce and Hopkins St, Winchelsea
Contact: Danni Menzies 0432019944
winchelseaplaygroup@gmail.com
Facebook - Winchelsea Playgroup 2019
New families welcome

Councillor Catch-Up

by Tony Phelps, Winchelsea Ward Councillor

I had 3 visitors at the first Winchelsea Councillor Chat last week, with discussions ranging from road care, traffic lights and pedestrian crossings through to new bridge, industrial estate, tree plantings and pigeon-poo! Good to catch up on people are seeing, hearing and doing around the region, my thanks for the drop-ins who took the time to call by.

By the way, the weekly community Co-Working/Study space in the Winchelsea Shire Hall is available Mondays and Thursdays 9am - 2pm. It's warm and comfortable with cushioned bench seats or make-your-own-arrangement of tables and chairs, free parking, nearby shops and cafes, a beautiful head-clearing riverside walk, mobile big TV with computer connection, internet, even printing. If you need to get away from your usual space to work or study, or somewhere to meet people (but not for confidential discussions), I highly recommend it as a cheap, convenient and central option. Spread the word! Definitely a use it or lose it service.

Many of the discussions would fit into the upcoming Winchelsea Place Plan, and I'm looking forward to observing the chosen group as they collect ideas and deliberate on what to put forward for potential inclusion into a masterplan for the next few decades. More opportunities will crop up for everyone to take a look at what they come up with on our behalf, and put in some feedback. I must say, there was a VERY disappointing number of survey submissions (just 37!), and only 24 out of 30 spots taken to participate in the workshops putting together a community-powered picture of future Winchelsea. It is hard to justify criticisms of Council programs and priorities if the local community doesn't engage until after the fact.

Speaking of opportunities to have a say, the Road Management Plan is still out for comment. Remember, this sets out at what point Council is required to step in and fix roads & pathways, and the recent Satisfaction Survey (see jo.my/satisfaction2025scs) shows that Winchelsea had the lowest rating for roads (sealed and unsealed). Your submissions DO matter and DO have an impact, and provide evidence for your Councillors to make changes and make decisions on your behalf.

Another issue you might be able to help with; as Winchelsea grows, we are seeing more dogs too. I don't mind saying, I'm a dog person. However, we've seen some incidents where dogs are threatening and in a couple of cases actually attacking other dogs and even people. To dog owners – you are required to keep your dog(s) under “effective control” and adequately contained at all times. To everyone – if you see poor dog behaviour, I urge you to report it to Council for the rangers to look into and log for evidence, see jo.my/scs-dogs.

Disclaimer: The views and opinions expressed in this article are my own and do not necessarily reflect the official policy, position, or views of Surf Coast Shire or its staff. They are offered in my capacity as an individual Councillor and should not be interpreted as representing the collective views of the Council or Shire.

Open Days planned in August for Winchelsea Community Bank Village

By Ken McDonald

Community Village chair John Knuckey said today the new independent living units in Winchelsea are nearing completion, offering a unique blend of comfortable design and spacious living in an unbeatable location in one of the town's most accessible settings.

With an impressive 9-star energy rating, the development sets a new standard for housing older people and those wishing to scale back from their traditional family home. Each two bedroom unit has been carefully designed to be large and spacious, with abundant natural light flowing throughout. Extensive landscaped gardens give both a great sense of space to the communal areas as well as privacy for individual units.

Just a two-minute walk from the Barwon river, residents will also have nearby access to the main street shopping precinct, the Winchelsea sporting hub and gymnasium, swimming pool, cafes and eateries and the medical precinct, and have immediate access to the Senior Citizens Centre making this a truly central and convenient place to call home.

The Winanglo Committee, local community members who have bought the vision to provide high quality, affordable, sustainable village living for those wishing to downsize their housing and stay in their local community, are excited to introduce the development to the wider public.

Community Open Days are planned for early August, but for any families interested in more information or a private viewing of the units, please contact:

Ken McDonald 0418 524 150, John Knuckey 0427 672 011

Grants for animal rescue centres to save and care for companion animals

By Victorian State Government

33 successful grant recipients are part of Round 12 of the Animal Welfare Fund Grants program, with \$1.6 million awarded in this round. This includes \$1.14 million to not-for-profit organisations, shelters, and community rescue and rehoming organisations to support the rehoming of companion animals.

Funding of \$460,000 has been granted to not-for-profit and community vet clinics to upgrade or expand their services or facilities or set up new low-cost clinics in areas of need.

Pets In The Park is a national organisation that provides free access to preventative veterinary healthcare programs, enabling homeless individuals to care for their pets while supporting their own wellbeing.

Animal Welfare Fund Grants Round 12 recipients include **Geelong Animal Welfare Society – Moolap (\$16,750)**

For more information, visit agriculture.vic.gov.au/livestock-and-animals/animal-welfare-victoria/community-and-education/animal-welfare-fund-grants-program

NAIDOC Week 2025 is a beacon of hope 6-13 July 2025

By St Vincent de Paul Society

'NAIDOC Week is a time to learn about and celebrate the continued history, culture and achievements of Aboriginal and Torres Strait Islander people in Australia,' the Society's National President Mark Gaetani said.

'This year's NAIDOC Week theme - 'The Next Generation: Strength, Vision & Legacy' - honours the achievements of the past and the empowerment of young leaders and provides an opportunity to reflect on the generations of advocacy and activism.'

Aboriginal and Torres Strait Islander people are overrepresented in almost all support services provided by the Society, reflecting the challenges they experience from historic and contemporary injustices.

'Government interventions have repeatedly failed because they have been developed without respectful and informative listening to First Nations People's advice on how issues should be tackled in community,' Mr Gaetani said.

'We continue to advocate for improvements to the co-development and co-design of policy and funding of services and programs.

'Real change can only be achieved by empowering First Nations communities, groups and individuals to contribute to the important policy making decisions that affect their lives.

'This is why a focus on the Next Generation is so important and is filled with promise. It

will help to truly recognise and value the place of Aboriginal and Torres Strait Islander people in Australia's history.'

Mr Gaetani said the Society's support for First Nations justice is informed by Catholic Social Teaching and by the National Aboriginal and Torres Strait Islander Catholic Council, the peak advisory body to the Australian Catholic Bishops. Resources have been developed to mark Aboriginal and Torres Strait Islander Sunday on 6 July.

'It is time to listen and to put Indigenous voices at the heart of the Australian Government's policies and programs that impact on Aboriginal and Torres Strait Islander peoples.

'We, the Australian people, have accepted the generous invitation of the Uluru Statement from the Heart to walk with First Nations people towards recognition, reconciliation and justice,' Mr Gaetani said.

'The St Vincent de Paul Society is proud to support the Allies for Uluru and has been a long-standing supporter of the truth telling and treaty process. It is so important for the broader community to have a good understanding of the forces that shaped Australia's history, both before and after European settlement.

'The role of First Nations people is central to this story. We all need to know the truth about what happened here and the inter-generational impacts of these events.'

Immense body of work done by Yoorrook Commission acknowledged by government

By Victorian State Government

Historic Yoorrook Justice Commission Reports Tabled

The State Government has tabled the Yoorrook Justice Commission's final reports – a historic moment on our path to truth-telling and Treaty.

The reports conclude the work of the Commission, established by the State Government in partnership with the First Peoples' Assembly of Victoria to investigate injustices experienced by First Peoples in Victoria since colonisation, including the impact of past and current government policies and actions.

This is the first formal truth-telling inquiry of its kind in Australia, and the Commission's work will have significant impact in helping all Victorians better understand our history.

The Government acknowledges the immense undertaking of the Commissioners and Commission staff in preparing these historic reports.

We acknowledge the strength and courage of those who made submissions and gave evidence to the Commission over the past four years.

We share the Yoorrook Justice Commission's goals of truth and justice and will carefully consider the Commission's final findings and recommendations.

Antique Repairs

By **Doug Burns** est. 1976

- All Furniture
- French polishing
- Carving
- Veneering
- Wood Turning
- Porcelain



Unusual Requests Welcome

180 Barwon Terrace, Winchelsea

0428 672 704



**Winchelsea
Supermarket**

Trading Hours

Monday to Saturday

8.30am to 7.30pm

Sunday

10am to 7pm

Ph: 5267 2676

29 Main St, Winchelsea



mainly music
est. 1990

**Fun, Interactive music sessions for
pre-school children (0-4 y.o.) and
parents/caregivers**

**When: Mondays from 10 to 11 am
(runs during school terms)**

Where: St Thomas' Hall

25 Barwon Tce.

To Enquire ring: 0407838256



There's Still a Hole in our Roof

It has been a very difficult couple of weeks with our school building. A substantial leak has occurred and with the continuing rain over the past few days, it's meant repair works have been delayed. I am very hopeful that the entrance will be opened as normal to begin Term 3. I am thankful to everyone for diverting either around the front of the school, or to the middle doors. Thankfully, there has been minimal disruption to learning. 5/60 moved spaces for a couple of days, but otherwise everyone else has stayed in their rooms. The bulk of the challenges have occurred in **the hallways**.

MONEY FOR FACILITIES - WHAT HAPPENS NEXT?

You may have heard that the school has received funding to work alongside the Victorian School Building Authority (VSBA) to develop a masterplan for our school site. Here's an overview of what happens next.

1 JUNE - CONSULTATION

The Principal leads broad consultation with students, staff, School Council, parents and the wider community.

The consultation seeks to identify strengths and opportunities for the current site.



2 JULY - ASSET MANAGEMENT PLAN

The Principal provides an Asset Management Plan. This part summarises the strengths and opportunities identified in the consultation. It also outlines the school's vision for learning, community and wellbeing.



3 SEPT - SCHEMATIC DESIGN

Principal works alongside VSBA and an architect to develop the masterplan.

The school will seek School Council approval for the masterplan.



4 NOVEMBER - WAIT FOR FUNDING

The school community waits for funding to be provided for building works (this could be for part or all of the project).



VISUAL ARTS WEEK 11

This year for NAIDOC Week, all classes participated in a lesson that involved the use of Aboriginal symbols to create a story. The students had lots of fun using sticks and scratching techniques to create their visual stories.



PERFORMING ARTS WEEK 11

Prep We are exploring games based on the story, 'We are going on a bear hunt.'

- 1-2** We are finishing off the unit learning about pantomimes and enjoying the final week of 'free choice of games.'
- 3-6** We are finishing off the unit learning about improvisation and enjoying the final week of 'free choice of games.'



PREP 2026 ENROLMENTS

ENROLMENTS ARE NOW DUE FOR 2026
IF YOU HAVE A CHILD READY FOR SCHOOL NEXT YEAR - PLEASE CONTACT THE SCHOOL TO OBTAIN DETAILS OF ENROLMENT AT OUR SCHOOL/TOUR AND ENROLMENT FORMS

BREAKFAST CLUB



Now open everyday !

8:15 to 8:45am

Every student is welcome to come along to get a healthy breakfast in the Multi Purpose Room

MGT BUILDING & CONSTRUCTION

NEW HOMES | EXTENSIONS | RENOVATIONS **Ph: 0409 433 687**

REGISTERED Building Practitioner

What's on Weekly

MONDAY-FRIDAY

WINCHELSEA COMMUNITY HOUSE

9am-2pm, 28 Hesse St, Winchelsea
(03) 5267 2028

WINCHELSEA TOY LIBRARY

9am-2pm (03) 5267 2028
Winch Community House,
28 Hesse St, Winchelsea

MONDAY-SATURDAY

WINCHELSEA HEALTH CLUB

Accessible - 24 hours
Eastern Reserve, 70 Hopkins St
5267 2336.

MONDAY

CO-WORKING & STUDYING SPACE

Mon and Thurs 9am-2pm \$10
Winchelsea Community House
28 Hesse St, Winchelsea

MAINLY MUSIC

Interactive Music 0-4yrs
10-11am (school terms)
St Thomas' 25 Barwon Tce
0407838256

WINCHELSEA GIRL GUIDES

4.30pm-6pm (School term)
St John's, Mercer /Harding St
Yvonne Orchard 0448 672 630
Lily Dell Rennie 0428 936 441



GROWING WINCHELSEA FORUM Mon 14 July

1. The Winchelsea Place Plan
2. Windfall Tax
6.00-6.30pm 04580 09616
www.growingwinchelsea.com



1ST MODDA/1ST WINCHELSEA SCOUTS

Cubs: 6:30-8pm (School term)
Modewarre Hall, Cape Otway Rd
Marie McPadden 0409 330147

VINYASA YOGA

7pm \$25
Winchelsea Shire Hall,
28 Hesse St, Winchelsea

TUESDAY



10-12pm Senior Citizens Centre,
36 Harding St, Winchelsea
Elaine Atkinson 0458 009 616



1ST MODDA/1ST WINCHELSEA SCOUTS

Joeys: 5-6pm (School term)
Scouts: 6:30-8:30pm (School term)
Modewarre Hall, Cape Otway Rd
Marie McPadden 0409 330147

WEDNESDAY

WINCH WALKERS

9:30-10.30am
Mud Hut (Opposite La Hoot Cafe)
Barwon Terrace, Winchelsea
ralexander@hesse.vic.gov.au

WINCHELSEA ZUMBA DANCE

Combined Zumba Fitness and Gold class.
6:30-7:30pm @The Globe Theatre.
Simone Dunmore: 0468 375 036
zumbawithsimone09@gmail.com

MAT PILATES

7pm \$25
Winchelsea Shire Hall,
28 Hesse St, Winchelsea

WINCHELSEA MEN'S SHED

9.30am 51 Hesse Street, Winchelsea
Ray Atkinson 0407839139
winchmenshed@gmail.com

Winchelsea Community Market
First Sunday on the Month (except November)

Shire Hall 9am to 1pm

Upcoming Dates:

July 6th	Nov 9th (2nd Sunday)
August 3rd	Dec 7th
Sept 7th	Jan 4th
Oct 5th	Feb 1st

Food, Produce, Coffee, Plants, Crafts
Homewares, Candles, Bags, Skincare
Jewellery, Soap + Baby Goods

Stallholders - Contact via Growing Winchelsea Inc Website
(Scroll Down to Market)

Winchelsea Community Foodbank

Fridays, 12 - 2PM
30-32 Hesse Street Winchelsea

For more info, contact Tess
healthpromotion@hesse.vic.gov.au
0417 848 292

WINCH HOUSE
Reaching into the community

HESSIE RURAL HEALTH

All welcome
No eligibility requirements

Join a Winchelsea Community Kitchen

Learn
Cooking skills, budgeting and recipe's

Cook
With a small group on a regular basis

Share
A delicious meal cooked together

Scan the QR code to sign up

OR Contact Tess:
healthpromotion@hesse.vic.gov.au
0417 848 292

WINCH HOUSE
Reaching into the community

HESSIE RURAL HEALTH



JULY/AUGUST

This is a recurring calendar. Please confirm event details with the organiser/venue if you'd like to attend. To add an event to the calendar, please email news@winchelsea.org.au

SENIOR CITIZENS CENTRE

Wednesdays 1- 3.00 pm
36 Harding St, Winchelsea
Jean Shinnars 52672263, 0427672263
jeanshinnars@gmail.com

MOTHER GOOSE SONG & RHYME

2pm (School term) FREE
Winchelsea Community House,
28 Hesse St, Winchelsea

WINCHELSEA HISTORICAL SOCIETY

Wednesday 1-4:pm, Friday 10am-3pm
Hesse St, Winchelsea
www.facebook.com/

MEL'S DANCE CENTRAL

Wed afternoons/evenings
pre-school - teens
Winch Senior Citizens Club
www.melsdancecentral.com.au

CWA

WINCHELSEA

7-8.30pm 2nd Wed monthly
Senior Citizens, Harding St
winchelsea.cwa@gmail.com



SES WINCHELSEA

7.30pm 132500
323 Mousley Drive,
Winchelsea



THURSDAY

WINCH KIDS ART CLUB SCHOOL HOLIDAY ACTIVITY 17 July

Winchelsea Shire Hall
Preschool ages 9-9.45am
School ages 10-11am
\$10 per child Materials provided

CHAT WITH YOUR COUNCILLOR TONY PHELPS

10am-12pm First Thursay of month
Winchelsea Shire Hall
28 Hesse St, Winchelsea

COWORKING & STUDYING SPACE

Mon and Thurs 9am-2pm \$10
Winchelsea Community House,
28 Hesse St, Winchelsea

WINCHELSEA PLAYGROUP

10am-12pm (School term) \$5
St Thomas Hall, 27 Barwon Tce
winchelsea-playgroup@gmail.com

WINCHELSEA PICKLEBALL

10-11.30am
Leisure Time Centre, Gosney St
Lesley Mathison 0438 672 197

WINCHELSEA KNITTING GROUP

10.30am-12pm FREE
Winchelsea Community House,
28 Hesse St, Winchelsea

WINCHELSEA COMMUNITY FOODBANK

12-2pm 30 Hesse St, Winchelsea
healthpromotion@hesse.vic.gov.au
0417 848 292

WINCHELSEA MOVIE CLUB

7.30 (3rd Thurs each month)
Globe Theatre, Main St, Winchelsea
growingwinchelsea.com/project/winchelsea-movie-club/

FRIDAY

TAI CHI

9am-10am \$10
Winchelsea Community House,
28 Hesse St, Winchelsea



WINCHELSEA COMMUNITY MARKET

9-1pm, 1st Sunday monthly (except Nov)
Shire Hall car park, Main St
growingwinchelsea.com/project/winchelsea-community-market/

PHONICS WITH ROBOT REG

10.30am (1-3 yrs) 11.30am (3-5 yrs)
(School terms)
www.robotreg.com.au/pages/shae

Chat with your Councillor

Tony
Phelps

1st Thursday of the month
10am-12pm
Winchelsea Shire Hall
co-working/study space

We'd love to see you!

WINCHELSEA PLAYGROUP

Each Thursday during school terms.
Come along between 10AM - 12PM.
Check out our Facebook Page for more information about the happenings of each session.
Playgroup Leader - Danni Menzies
Email: winchelsea-playgroup@gmail.com
St. Thomas's Hall,
27-29 Barwon Terrace,
Winchelsea VIC 3241

\$5 PER FAMILY
INCLUDES MORNING TEA & HOT DRINKS FOR CAREGIVERS

Scan to be part of our Facebook Group



Fun, Interactive music sessions for
pre-school children (0-4 y.o.) and
parents/caregivers

When: Mondays from 10 to 11 am
(runs during school terms)

Where: St Thomas' Hall
25 Barwon Tce.

To Enquire ring: 0407838256



What's on Weekly

CHATTY CAFÉ

10.30am-12.30pm
Donation
Winchelsea Shire Hall,
28 Hesse St, Winchelsea

NATIVE FLOWER WORKSHOPS

Fri 25 OR Sun 27 July 10.30am-1.30pm
Barrabool Hills Lavender \$120 pp
112 Monahans Rd, Gnarwarre
Includes materials, equipment, flowers,
country style lunch, 3 hour workshop
Carrie 0421 464 209

WINCHELSEA HISTORICAL SOCIETY

Friday 10am-3pm
Hesse St, Winchelsea
www.facebook.com/

WINCHELSEA SENIOR CITIZENS

Fridays 1.00 pm - 3.00 pm
36 Harding Street, Winchelsea
Jean Shinnars 52672263, 0427672263
jeanshinnars@gmail.com



WINCHELSEA RSL

1-30pm 18 July, 7.30 15 August,
1.30 19 Sept, 17 Oct,
7.30 21 Nov, 12.00 19 Dec
Winchelsea Men's Shed,
Hesse St, Winchelsea
David Loone 0488 165 109

GEELONG REGIONAL LIBRARY

(MOBILE) 2-5pm
Old Shire Hall, 28 Hesse Street
0408384331 (During scheduled stops)

SATURDAY



PARKRUN

8am Trebeck Reserve
Sussex St, Winchelsea
www.parkrun.com.au/trebeckreserve/

FLOW YOGA

8am, \$25
Winchelsea Shire Hall,
28 Hesse St, Winchelsea

WINCHELSEA LAND AND RIVERCARE MONTHLY WORKING BEE



Saturday August 2
9am End of Dwyer St.
Rod Stone 0428 549318
Stewart Mathison
0428 672054

WINCHELSEA STAR PRODUCTION/COFFEE MEETING

9-10am (Last Sat monthly)
La Hoot Cafe, Main Street
www.winchelseastar.org.au
5273 0295

WINCHELSEA CROCHET GROUP

1.30pm 2nd Saturday each month \$5
Winchelsea Community House,
28 Hesse St, Winchelsea
reception@winchhouse.org.au

ST JOHN THE BAPTIST CATHOLIC CHURCH

Mass 5pm each week (Winter season)
Harding St, Winchelsea 0404598558

WINCHELSEA COMMUNITY DINNER

6.30pm (Last Sat each month)
Hall, Harding St Winchelsea
Bring plate & gold coin donation if you can

SUNDAY

RUNNING GROUP

8am Meet at La Hoot

CHEESE MAKING WORKSHOP

24 August Shire Hall
shirehall@winchhouse.org.au
52672028

WINCHELSEA UNITING CHURCH

Service 9.30am each week
Hesse St, Winchelsea
0475 777 301
uca.winchelsea@gmail.com

ST THOMAS' ANGLICAN CHURCH

10am each week Barwon Tce,
Winchelsea 0477 672 042,
stthomaswac@gmail.com

Hesse Rural Health provide face-to-face, telehealth, and home visit options to support individuals dealing with a range of issues, offering a confidential space where you can explore your feelings and concerns



FREE

COUNSELLING SERVICES

Relationships

Anxiety

Stress

Life transitions

Grief and Loss

Depression

Anger

Caring for others

Uncertainty

Family Violence

Parenting

Life decisions

Call our phone number listed below; or email jdevonport@hesse.vic.gov.au to make an appointment at Beeac, Rokewood, Winchelsea, Bannockburn, or in your own home.

For immediate crisis support:

- Lifeline: 13 11 14
- Suicide Call Back Service: 1300 659 467
- Family Violence Support: 1800 737 732

Contact Us



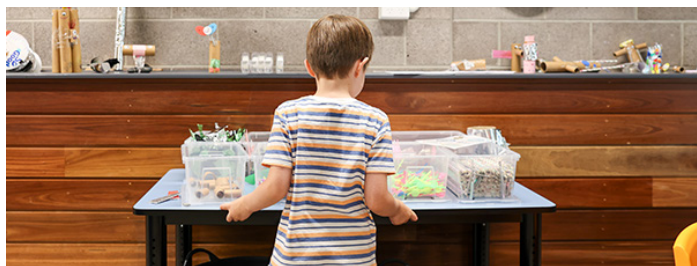
Phone Number:
(03) 5267 1200



Website:
hesseruralhealth.com.au



Barwon Water News Update



Free school holiday fun in the sewers

If you're looking for a fun, family-friendly and free activity, with a good dash of fart toilet humour, we've got the place to visit these upcoming school holidays.

The Museum of Modern (f)Art explores the world of sewers, with important messages on protecting our environment from sewer spills woven into engaging activities for kids.

We're extending opening hours to allow more families to come:

Thursday 10 July 2025 from 10.30 am to 2.30 pm

Tuesday 15 July 2025 from 10.30 am to 2.30 pm

Thursday 17 July 2025 from 10.30 am to 2.30 pm

There's no need to book – just pop in.

Finding the Museum is easy – follow the directions and wayfinding video on the Museum of Modern (f)Art webpage.

We are keeping price increases below inflation

We're committed to keeping water bills affordable while continuing to deliver high-quality and reliable water services to our customers.

Each year, we look at the rising costs of operating and maintaining about \$3.79 billion worth of assets and delivering services to about 380,000 people year round, with more in peak periods.

By continuing to focus on innovation and efficiencies, in 2025–2026, price rises for residential customers will be less than inflation.

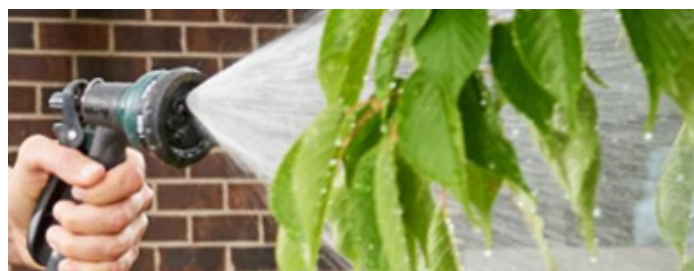
From 1 July 2025, residential customers bills will increase by 1.1 per cent which is under the Annual Consumer Price Index (CPI) inflation rate of 2.4 per cent.

This will add about \$1.04 per month for the average owner-occupiers and \$1.23 per month for renters.

Business customer bills will also increase below CPI at an average of \$1.66 per month.

The prices reflect our commitment to reduce core water and sewerage tariffs by 0.9 per cent, in real terms, each year from 2023–2028 with prices either reduced or increases kept under the rate of inflation for the past eight years.

While this helps to provide some relief from the wider cost of living pressures, it is important to remember that support is available for anyone having difficulty paying their bill.



Permanent water saving rules

Permanent water saving rules are in place every day of the year and are uniform across Victoria.

-
- Use a trigger nozzle when watering your garden
- Use a sprinklers and watering systems before 10am or after 6pm so that water sinks into the ground rather than evaporating
- Clean hard surfaces like driveways with a broom not a hose
- Have recirculation systems for fountains and water features.



Café La Hoot

have you tried
'owl' coffee?

1 willis st cafelahoot@gmail.com 0407 528 999

WINCHELSEA CONCRETING

• Driveways • Sheds • Decorative Concrete • Raft Slabs

Robert Murphy

☎ 0438 235 237

✉ winchelseaconcreting@outlook.com

DownRyte Excavations



- Excavations
- Drilling and Piling
- Rock Placement
- Tree and Stump Removal

Sean Hunwick

Mobile: 0409 447 288

Email: downryte@activ8.net.au

direct TEMPORARY FENCING

FOR HIRE - SUPPLIED & ERECTED - 7 DAYS
GEELONG - BELLARINE - COLAC - SURF COAST
PHONE CAM 0417 310 800

SOUTH-WEST — PAINTING — GROUP

Contact us:



0431 719 218



www.southwestpaintinggroup.com.au



matt@southwestpainting.com.au

We specialise in:

- New Homes
- Texture Feature Finishes
- New and Old Cabinetry Coatings
- Commercial Projects
- Maintenance Work
- Residential Work
- Wallpapering
- Pre-Sale Painting
- Timber Decking Rejuvenations

M & L DRAYTON

PLUMBING SERVICES

REG No 24356 C/A No C02594

- Domestic and Rural Plumbing
- Roofing
- Sewerage & Septic
- LPG & Natural Gas Connections
- Motorised Drain Cleaning
- Backhoe Hire

Phone Mark 5288 7244

PO BOX 98 WINCHELSEA 3241

Mobile 0428 520 142



DRIVEWAYS, CARPORTS, CROSSOVERS,
FOOTPATHS, SHED SLABS, STAIRS
HOUSE SLABS, EXPOSED, SEALING & MORE

CONTACT ALISTER NOW FOR A QUOTE

☎ 0411871950

✉ AMACONCRETING1@GMAIL.COM



Winchelsea Community House Inc. A6247K
28 Hesse Street, PO BOX 75, WINCHELSEA, Vic. 3241
Phone: (03) 5267 2028 **Email:** manager@winchhouse.org.au
ABN: 48 932 340 254

School Holidays
GAMES AFTERNOON
In the Shire Hall
Wednesday 16th July 1pm - 3pm
Gold coin donation.

Chatty Café

Fridays 10.30am – 12.30pm

"Sip, Chat, Share, Care"

In the Shire Hall. All Welcome



Gold coin donation.

WINCH KIDS ART CLUB
SCHOOL HOLIDAY ACTIVITY
17TH JULY
IN THE WINCHELSEA SHIRE HALL

SESSION ONE - PRESCHOOL AGES 9-9.45AM
SESSION TWO - SCHOOL AGES 10-11AM
\$10 PER CHILD
CANVAS AND MATERIALS PROVIDED.
BYO ART SMOCK OR PAINT CLOTHES
LIMITED SPOTS AVAILABLE.

YOGA & PILATES
At the Winchelsea Shire Hall
Vinyasa Yoga Mondays 7pm
Mat Pilates Thursday Nights 6.30pm
Yoga Flow Saturday Mornings 8.30am
Email: shirehall@winchhouse.org.au for more information

Need a quiet place to work or study
over the School Holidays?

CO-WORKING & STUDY SPACE

Access to Photocopying and printing

NBN Wi-fi

Private meetings and Wide screen Tv also
available upon request.

Customize the space to suit your
needs.

Get in touch with Rhani for
availability across both weeks
of the School Holidays.

shirehall@winchhouse.org.au

Craft & Crochet Group

\$5 per person.

1pm, every second Saturday
in the Winchelsea community house.

Register your interest at
reception@winchhouse.org.au

Join Our Mailing list to keep informed
of all events and programs happening
at Winch House and in the Shire Hall!
Email shirehall@winchhouse.org.au
to register.

Water Delivery



WAZZA'S
WATER CARTAGE

Stainless Tanker Up to 22,000 ltr loads
Barwon Water Registered

Domestic & Rural Water Supplies

Call Wazza
Mob: 0428 877 260
Email: wazza@wazzas.com.au Web: wazzaswater.com



5234 6585 0417 385 984
For all your domestic & stock water.
Also available for road and civil construction
Local owned and operated.

TIP TRUCK HIRE

- * **FRONTEND LOADER**
- 4 IN 1 BUCKET**
- * **DRIVEWAYS**
- LEVELLED OFF**
- * **RUBBISH REMOVAL**
- * **GRASS SLASHING**
- & RIDE ON**
- MOWER JOBS**

VINCE
0412 840 704

Knuckey's Winchelsea
Ph: 5267 2011

Knuckey's have in stock a complete range of batteries to suit tractor, heavy machinery, cars, utes

The largest range of the best oil for your vehicles—**CASTROL**—
'when only the best will do'

The largest range of V belts.
A, B, C, D M Sections
Bolts and nuts for all occasions
Steel cut to size



SOUTHERN GRAIN STORAGE PTY. LTD.

AG SUPPLIES FERTILISER GRAIN STORAGE SEED CLEANING
(03) 5267 2351

OZ TREES NURSERY & TREE PLANTING SERVICES


- Affordable seedlings—over 200 species
- Complete plantation service—farm forestry, shelter, aesthetics
- Deep ripping & mound ploughing. Rotary bed forming
- Our experienced staff will help you select species for your site conditions and needs

Also available—tree planting tools, milk cartons, plastic tree guards & bamboo stakes



569 Warrowie Rd. Colac
P: 5233 6280 F: 5233 6393
E: info@oztrees.com.au
W: www.oztrees.com.au
Open Monday—Friday
9am—4:30pm

Phone OzTrees for professional advice,



DANCE CLASSES

TAKING ENROLMENTS NOW
FOR OUR WINCHELSEA STUDIO

PRE-SCHOOLERS - ADULTS
CONTROLLED CLASS SIZES
JAZZ - THEATRICAL TAP - CLASSICAL BALLET
HIP-HOP - CONTEMPORARY DANCE

ENROL TODAY

WWW.MELSDANCECENTRAL.COM.AU



5234 6585 0417 385 984
For all your septic tank, grease traps
and interceptor pits servicing.
Locally owned and operated

52672192 R & K Creative Framing
for all your framing needs

free quotes
pension discount
specialist in Age &
Disability Modifications

Ray & Kim Jansen
10 Witcombe st
Winchelsea 3241
0414672192

Ray The Home
Maintenance HANDYMAN
abn 47928623462

45 Anderson Street, Winchelsea 3241 Tel 5267 2660 winchelsea golf.com.au

Winchelsea Golf Club



By Winchelsea Golf Club

Golf news - and a big thank you to Winchelsea Pharmacy for all your support.

Results: Saturday 28/6/25 Winchelsea Pharmacy Trophy

3rd Round - Stableford 18 Players

1st - Kelvin Boddington (17) 37 points

2nd - Daryl Boddington (14) 35 points

BDL - Angus Heathcote (21) 33 points C/B

BDL - Bernie Perry (19) 33 points C/B

BDL - Tom Shaw (17) 33 points C/B

NTP (2nd/11th) Peter Bath

Golden Hole (6th) Bill Spencer

Thank you to Winchelsea Pharmacy for sponsoring our last 3 rounds. Your generosity has not gone unnoticed! The winner with the combined score of the best two rounds was Rachel Boddington. Congratulations!

Next Saturday - July 5th - Hand of Friendship
Winchelsea vs Inverleigh.

Register at 10am for an 11am Shotgun start.

Please bring a plate for afternoon tea.

Course will be closed to the public until 3pm.



Applications are now open for seasonal firefighter roles

By DEECA

Forest Fire Management Victoria (FFMVic) is employing 500 seasonal firefighters prior to the summer bushfire season.

FFMVic Chief Fire Officer, Chris Hardman, said seasonal firefighters boost Victoria's firefighting capacity in the lead-up to summer and during the peak fire season.

"New recruits will train and work alongside our permanent firefighting staff, responding to bushfires rapidly to keep communities safe this summer," Mr Hardman said.

"They will be part of a team of close to 1800 frontline personnel and 1200 accredited incident management staff this bushfire season."

Last year Forest Fire Management Victoria firefighters responded to more than 1265 bushfires across the state, and delivered priority planned burns which will help reduce the impact of bushfires this summer.

"Emergency response deployments can occur anywhere across the state, providing opportunities to travel and work in different locations," Mr Hardman said.

"In previous seasons, some recruits have also been deployed to support firefighting efforts across Australia and internationally."

Barwon South West Region Deputy Chief Fire Officer, Scott Turner, said seasonal firefighter roles provide rewarding

career opportunities for those with a passion for the outdoors, learning new skills and making a difference.

"In addition to responding to bushfires and helping to deliver planned burns, new recruits will also undertake pest and weed control works, and maintain recreational reserves, strategic fire breaks and forest roads," Mr Turner said.

"They can also be called on to support other emergencies such as major floods, storms and biosecurity incidents."

"Many of the firefighters deployed to the current Canadian bushfires started their careers as seasonal firefighters," he said.

Applications are now open for seasonal firefighter roles across eight locations in the Barwon South West region including Dartmoor, Nelson, Heywood, Casterton, Gellibrand, Barwon Downs, Lorne and Anglesea.

FFMVic is committed to a diverse and inclusive workplace that reflects the Victorian community. As part of its ongoing commitment to support meaningful careers for current and future First Nations staff, designated positions are available.

Applications close 27 July and employment occurs between October and May, with some variations depending on seasonal requirements.

For information and to apply, visit jobs.careers.vic.gov.au/pff or call 136 186.

All About

Mowers & Chainsaws

Repairs to all makes and models of ride on mowers, domestic mowers, pumps, chainsaws, brushcutters and small engines.

Trading Hours: Mon - Fri 8am - 5pm Saturday 8am - 12 noon

5267 2266 Cnr Princes Hwy & Lennox St Winchelsea

www.allaboutmowers.com.au
accounts@allaboutmowers.com.au

FERRIS COX STIHL BRIGGS & STRATTON VICTA

NATIVE FLOWER WORKSHOPS
Friday 25 and Sunday 27 July
(2 workshops available)
10.30 am - 1.30 pm
\$120 pp
Includes all materials, local flowers
and country lunch
at **Barrabool Hills Lavender**
To book phone Carrie 0421 464 209

TRENCHES & HOLES PTY LTD.



PHILLIP ROBERTSON
☎ 0427 672 945
WINCHELSEA

- General Earth Works
- Driveways
- Trencher
- Kanga Loader
- Grader
- Excavator Work (3.5 & 6.5 Tonne)
- Tip Truck
- Rock Breaker
- Post Holes & Shed Footings

A.B.N 74006896898

Winchelsea Star

STS
ACCOUNTING
GROUP

**Your Taxation
&
Superannuation
Specialists.**

Winchelsea
5267 2673
www.surftax.com.au

ven191064



**WORPEL
CUSTOM
FURNITURE**

- BESPOKE TIMBER FURNITURE
- TIMBER VANITIES
- BARNDOORS
- KITCHEN, BATHROOM & WARDROBE JOINERY
- REPAIRS & RESTORATION

0439013145

worpelsam@yahoo.com.au

25A Alsop Drive Winchelsea



MRP Steelworx

Matthew Partridge
p 0418 672 334
e mrpsteelworx@yahoo.com.au

Welding Service

- Onsite welding
- Farm maintenance
- Farm machinery & equipment repairs
- Cattle & sheep yards
- Custom built trailers
- Supply & install gates

CONCRETER

- * DRIVEWAYS
- * FOOTPATHS
- * KERB & CHANNEL
- * GARAGES & SHED SLABS
- * STEPS
- * WHEELCHAIR RAMPS
- * VERANDAHS
- * PATIO AREAS
- * PLAIN OR COLOURED CONCRETE
- * CONCRETE CUTTING & REMOVAL

VINCE
0412 840 704

parkrun 70



Saturday 5 July 2025

Trebeck Reserve, Winchelsea

Thirty six parkrunners walked or ran the course through Trebeck Reserve this week. We had visitors from Karkarook, Derrinallum and Balyang. There were no first timers this week.

Eight people completed their personal best time for Trebeck Reserve parkrun. Congratulations to Eva Phan, Sean Logan, Lillian Logan, June Petrie, Ann Jones, Kirsty Logan, Marlene Gladman and Bert Pelgrim. Congratulations also to Chris Hurren who completed his 50th parkrun.

Also a very large CONGRATULATIONS and THANK YOU to Neil McInnes for reaching his 100th Volunteering for parkrun, as without his ongoing assistance and support the Trebeck parkrun would not be possible.

Thanks, Helen Woodall

This event was made possible by the following volunteers:
Neil McInnes, Ann Morsby, Don Smith, Liz Bennett,
John Caufield, David Woodall, Helen Woodall, Daryl Gladman,
Marlene Gladman

It takes a minimum of six people each week to safely conduct an enjoyable event. Please email trebeckreserve@parkrun.com if you are able to volunteer some of your time. Tasks are simple, sociable, fun and very much appreciated.

Further details of this week's results can be found at trebeckreserveparkrun.com.au/results or check out our Facebook page for more photos and further information.



HESSE RURAL HEALTH

Acute Care*
Urgent Care*
Residential Aged Care*
Community Nursing
Dietetics
Physiotherapy
Occupational Therapy

Diabetes Education
Social Support Groups
Counselling
Home Care
Health Promotion
* services from Winchelsea only

www.hesseruralhealth.com.au
P: (03) 5267 1200 E: reception@hesse.vic.gov.au

WANT TO JOIN PROBUS?

Enjoy fellowship with other members
Enjoy trips & outings
Listen to guest speakers

Contact Lorraine
0417 467 927

Kidsafe
Child Accident Prevention Foundation of Australia
Victoria



WINCHELSEA FACEBOOK



Community, Sports, Churches and Non-profits

What's on in Winchelsea	facebook.com/WhatsoninWinchelsea
Winchelsea FREE	facebook.com/groups/winchelseafree
Winchelsea Community Information	facebook.com/groups/207538644446972
Winchelsea Classifieds 3241	facebook.com/groups/216942861684082
Winchelsea Lost and Found	facebook.com/groups/768187693217518
Winchelsea Op Shop	facebook.com/HospitalAuxiliaryOpShopWinchelsea
Winchelsea Shire Hall	facebook.com/WinchelseaShireHall
Winchelsea Community House	facebook.com/winchelseacommunityhouse
The Green Winchelsea Residents	facebook.com/groups/515322772623126
Growing Winchelsea Inc	facebook.com/growingwinch
Winchelsea Star	facebook.com/TheWinchelseaStar
Winchelsea Movie Club	facebook.com/winchelseamovies
Winchelsea Community Market	facebook.com/100083362387611
Winchelsea Land and River Care Group	facebook.com/envirowinchelsea/
Upper Barwon Landcare Network	facebook.com/UpperBarwonLandcare
Winchelsea & District Historical Society Inc	facebook.com/Winchelseaanddistricthistoricalsociety/
Winchelsea Wildlife Shelter	www.winchelseawildlifeshelter.com/
SCARS - Surf Coast Animal Rescue Service	facebook.com/groups/415211698950674
Winchelsea Gardeners	facebook.com/groups/779878518703025
Winchelsea & District Historical Society	facebook.com/Winchelseaanddistricthistoricalsociety/
Winchelsea Repertory Society Inc	facebook.com/winchrep/
Winchelsea Globe Theatre	facebook.com/Winchelsea-Globe Theatre-164790897641678
Winchelsea Uniting Church	facebook.com/winchelseaunitingchurch
St Thomas' Anglican Church	facebook.com/StThomasWinchelsea
St John the Baptist Catholic Church	facebook.com/pages/Winchelsea-Catholic-Church/101775670163180
Winchelsea Mainly Music	facebook.com/groups/668500343953191/
Winchelsea Health Club	facebook.com/WinchelseaHealthClub
Winchelsea Playgroup (School terms only)	facebook.com/groups/551663435367031
Winchelsea Girl Guides	www.guidesvic.org.au/
Winchelsea/Modewarre Scouts	facebook.com/1stModewarreScouts
Winchelsea Fire Brigade	facebook.com/winchelseafirebrigade/
Winchelsea SES	facebook.com/groups/WinchSES
Country Women's Association - CWA Winchelsea	facebook.com/pg/CWAWinchelsea/
Winchelsea Bowls Club	facebook.com/Winchelsea-Bowls-Club-533783333344345/
Winchelsea Blues Cricket Club	facebook.com/groups/8999049476/
Winchelsea Blues FC	facebook.com/WinchelseaFNC/
WYLD Winchelsea Youth Leisure and Drop in	facebook.com/groups/569737570027065/
Lions Club of Winchelsea	facebook.com/LionsWinchelsea
Winchelsea Probus	facebook.com/893535194971083
Winchelsea Golf Club	facebook.com/winchelseagc/ facebook.com/groups/1324943804676697
Winchelsea Zumba Crew	facebook.com/groups/479475585109144



Winchelsea Tennis Club 21 Armytage St Winchelsea
<https://www.facebook.com/groups/770786371589798>

Winchelsea Tennis Club

Fletcher Allen

Round 5 Recap: On the Road ... On Top!

This week the night squad hit the road to Lara, ready to take down the ladder leaders. Michelle was out sick (get well soon!), so it was boys-only business—and business was booming.

Matt & Fletch kicked things off by not breaking serve and not breaking a sweat—6-2.

Jeff the Fill-In turned full-time destroyer, smashing his singles 6-0.

Fletch & Jeff then teamed up: long rallies, net kills, and another win—6-2.

Matt? Business as usual. Another royal thrashing—6-0.

Matt & Jeff dished out yet another donut in doubles—6-0.

Fletch took the scenic route in his singles, but still got it done—6-3.

Final Score: 6 sets to 0, 36 games to 7. Absolute ladder-topping domination.

Winchelsea TC is now sitting 1st! — can we stay there?

Next up after the break: the epic rematch vs the Wandana Wild Aces. Buckle up.

Grants to support First Nations athletes

By Victorian State Government

Victoria's next generation of First Nations athletes can take their performance to the next level with more grants for uniforms, equipment, travel and participation in sport carnivals, supported by the State Government.

From the Australian Indigenous Surfing Titles to Super Netball, the performances of First Nations athletes on the big stage are an inspiration to all Victorians.

The program delivers grants of up to \$1,000 for team uniforms and equipment, and up to \$2,500 for travel costs so clubs can participate in both Victorian and national tournaments.

Individuals can also access up to \$250 for sporting uniforms and equipment, and up to \$750 for their own travel costs.

Previous recipients include Reservoir based Debbie's Diamonds who scored almost \$3,000 towards travel costs,

supporting their Men's C Grade and Women's B Grade basketball teams to compete at the recent 2025 VACSAL State-wide Basketball Classic in Mildura.

Mernda Calisthenics Club also bagged more than \$500 towards uniforms for five club members from ages 15 to 24 to enable them to compete in the local competition.

This grant program is part of the Labor Government's strong support for the Victorian Aboriginal community. Since 2020, the Aboriginal Sport Participation Grant Program has provided more than 480 grants to community sport clubs and individuals in Victoria's Indigenous communities.

Applications for this round are open until 11:59pm on 29 July 2025. For more information or to apply visit sport.vic.gov.au.

eldersrealestate.com.au

Elders

You're in Safe Hands With Peter Lindeman Delivering Exceptional Results for Over 20 Years

If you're thinking of selling a Rural or Lifestyle acreage property on the Bellarine, the Greater Geelong region or beyond then think Peter Lindeman.

Peter spent 20 years managing farms before jumping the fence to sell them; and over the last 23 years he's helped over 350 vendors achieve extraordinary results, more often than not surpassing their expectations. Why not let Peter show you how he can help you achieve an outstanding result for your property.

Peter Lindeman - 0418 525 609

RURAL AND LIFESTYLE SALES MANAGER - ELDERS GEELONG

E: peter.lindeman@elders.com.au





Life's busy. Let us help you.

Contact us today

We can help you with:

- Buying your first or next family home
- Saving for your first home
- Residential Investment Lending
- Refinancing from your current lender
- Home loan reviews
- Pre-approvals

With extensive banking experience and financial expertise, we'll help bring your financial goals to life.



Ebony Berg
0400 784 249



Josie Kavenagh
0409 564 192



Community Bank
Winchelsea and District

PAPER RECYCLING

**Paper depot rear of
Senior Citizens
Rooms
Harding Street
NEWSPAPERS
MAGAZINES
PHONE BOOKS**



**All money raised used
for local community
4224 0226**



WINCHELSEA LIONS CLUB 022559
30 Members

Last financial year contributed
4000 hours of time and effort
which generated in excess of
\$24,000 to support local community,
national and international projects

**COME AND JOIN
WINCHELSEA LIONS**
winchelsea.vic@lions.org.au
(03) 4224 0226

Contact us today and a Lions
member will be in touch to wel-
come you to the Club.

A family business operating for more
than 138 years, HF Richardson services an
extensive client base throughout the greater
Winchelsea area. Our success is built on
a long history of innovation and while we've
moved with the times, our basic values of
honesty, trust and integrity have remained.



Eric Foster
0429 499 924
Sales Executive



Ken McDonald
0418 524 150
Licensed Estate Agent

**Residential | Rural Lifestyle
Agricultural Farms**

HF RICHARDSON
PROPERTY

www.hfrichardson.com.au

PAPER LOGS & ROLLS

**No Chainsaw Needed
Made By Recycled Paper
Environmentally Friendly
Ash Good For Garden**



**1 Roll
\$2
Pack of 4 Logs
\$5**

By using paper logs you save trees



**Contact Alan
0476 475 422**

All money raised used for local community



NOTICE OF APPLICATION FOR A PLANNING PERMIT



Wadawurrung Country
1 Merrijig Drive (PO Box 350) Torquay, 3228
P. (03) 5261 0600 E. planningapps@surfcoast.vic.gov.au

The land affected by the application is located at: PART/4020 Princes Highway, WINCHELSEA

The application is for a permit to: Use and development of a service station, construct a building within 100m of a PAO and display of signs

The applicant for the permit is: Hazkem (Aust) Pty Ltd

The application reference number is: **25/0115** Please quote this number when making enquiries

A planning permit is required under the following clauses of the Planning Scheme:

- | | |
|----------------------|--|
| 35.07-1 (FZ) | Use land for a service station (unmanned refuelling facility) |
| 35.07.4 (FZ) | Construct or carry out: <ul style="list-style-type: none">• a building or works associated with a section 2 use• a building within 100 metres of land in a Public Acquisition Overlay where the acquiring authority is the Head, Transport for Victoria |
| 52.05 (Signs) | Construct or put up for display business identification and promotion signs |

You may look at the application free of charge and any documents that support the application at the office of the responsible authority:

Surf Coast Shire, 1 Merrijig Drive, Torquay VIC 3228
Office hours: 8:30am – 5:00pm Monday to Friday, and is free of charge.

The application can be viewed online: eplanning.surfcoast.vic.gov.au/Account/Login.aspx

Any person who may be affected by the granting of the permit may object or make other submissions to the responsible authority. An objection must be made to the responsible authority in writing, include the reasons for the objection and state how the objector would be affected.

The responsible authority must make a copy of every objection available at its office for any person to inspect during office hours free of charge until the end of the period during which an application may be made for review of a decision on the application. A copy of all objections is provided to the Permit Applicant. If you object, the Responsible Authority will tell you its decision.

The Responsible Authority will not decide on the application before: **25 July 2025** (or until a minimum of 14 days after the last notice is given)

Item No. 50340

Planning and Environment Regulations 2005 Form 2

New Payroll Tax Cuts take effect

By Victorian State Government

The payroll tax-free threshold has lifted from \$900,000 to \$1 million – meaning more small businesses will pay no payroll tax.

It follows the lifting of the threshold from \$700,000 at the start of the financial year. The change will mean about 6,000 businesses no longer paying any payroll tax and a further 22,500 businesses paying a reduced amount – saving up to \$14,550 per year.

Victoria's economy is strong and our world-leading capabilities, established industries, skilled workforce and outstanding liveability make the state one of the best places to live, work and invest.

Over the past decade Victoria's economy has grown faster than any other state.

Business investment in Victoria remains robust, growing by 1.6 per cent in the four quarters to March 2025, compared to 1.2 per cent nationally.

More than 113,000 businesses have been added since June 2020, the largest percentage growth of any state.

The State Government is also making it easier and simpler for Victorian businesses to start or build a business – backed by a \$627 million investment in the Victorian Budget 2025/26 to support business and grow the Victorian economy, including delivering the Economic Growth Statement in full.



0400 643 976

- All general Plumbing and Gasfitting • Water tanks and Pumps
- Renovations and Extensions • Hot water and Heat pump
- Split system and Wood heaters • Roof and Gutter
- Septic and Treatment plants • Excavation, Bobcat and Tipper
- Driveways and Earthworks
- Blocked drains and CCTV Inspection

Simon McGillivray
Lic: 109610 Free Quotes, Fast & Friendly Service

NATURAL GAS CONNECTIONS

M. & L DRAYTON
PLUMBING SERVICES

YOUR LOCAL LICENSED

- PLUMBERS (24356)
- GAS FITTERS
- GAS CONVERTERS
- CARBON MONOXIDE TESTING

MARK 0428 520 142





17 Alsop Drive

- ❑ LOG BOOK SERVICE
- ❑ AUTO ELECTRICAL
- ❑ TOWING
- ❑ AIR CONDITIONING
- ❑ CLUTCH & BRAKES
- ❑ TYRES
- ❑ WHEEL ALIGNMENT
- ❑ BATTERIES

CAR, TRUCK REPAIRS & Roadworthys

PH: 5267 3001

Mob: 0417 137 457



Quick Response Grants

NOW OPEN!

Grants of up to \$3,000 for equipment and community led projects

To apply: surfcoast.vic.gov.au/Grants

surfcoast.vic.gov.au



Green Lead Electrical

Connecting you to a greener future
REC 23618

0467 097 101



Servicing Geelong & the Surf Coast

Specialising in all residential electrical work including:

- Switch board & lighting upgrades
- Outdoor lighting
- Electrical safety checks
- Energy efficient LED lighting
- Ceiling sweep fans & ventilation
- Energy saving advice

Phone Martin Wilkinson:

0467 097 101

greenlead@outlook.com

1132268-CG18-14

Wightons Lawyers

Dispute Resolution & Litigation

Debt Collection

Property Law

Wills & Estates

Powers of Attorney

Business Law

Family Law

By appointment only

22 Willis Street, Winchelsea
ph. 5221 8777

www.wightons.com.au

Winchelsea
**Medical
Clinic**

Located at 36 Main Street, Winchelsea 3241

For any enquires or bookings please contact the clinic on 5292 8028.
Or visit our website: www.winchmc.com.au

Opening Hours:

Monday - Friday 8:00am - 5.00pm

(Monday Evening Clinics available and selected Saturdays)



Our clinic accepts online bookings via the app called HotDoc.
Download the app on the App Store or Google Play or head to our website.



Caring for families since 1883

Every detail matters...

Tuckers
Funeral & Bereavement Service
...for a life worth celebrating

AFDA Member

PH: 5221 4788

www.tuckers.com.au





Winchelsea Football Netball Club Inc

Hopkins St, Winchelsea winchelseafnc@hotmail.com

Junior Netball

Shae Callahan

A Pink Round of Passion, Pride & Progress

This weekend was more than just another round of netball — it was a celebration of community, courage, and club spirit as Winchelsea took on local rivals Inverleigh in a special Ladies Day round for breast cancer awareness. With players, coaches, and supporters donning pink, the courts were buzzing with colour, purpose and positivity.

Our Under 11s had the incredible opportunity to play in front of the big game day crowd once again — and the moment was made even more special as they warmed up alongside their C Grade idols. The smiles shared between our youngest and senior players were a perfect reflection of the club's comradery and spirit.

On court, the U11s showed grit and determination, staging a thrilling second-half comeback before just falling short, 11–14, to a top-age and highly experienced Inverleigh side. Their fightback and teamwork were nothing short of inspiring!

In the Under 13s, Inverleigh's depth and experience were on full display as they took a 57–4 win. However, the highlight for Winchelsea came in the form of opportunity — with two U11s stepping up to gain valuable experience and confidence at the next level. We're proud of their effort and courage, and no doubt they've come away with new skills and memories.

Our Under 15s faced another tough Inverleigh side and, despite a strong effort, went down 12–36. The team continues to develop each week and are building great foundations for the future.

But the day wasn't without wins! Our Under 17s came out firing from the first whistle, playing a dynamic and confident game to take a well-earned 32–15 victory. The Under 19s backed that up with another strong showing, claiming a 28–16 win in front of an energetic home crowd.

From pink hair ribbons to proud moments, this weekend captured everything we love about grassroots netball — teamwork, resilience, and heart. Bring on next week!



Supporters

For all your livestock, rural real estate and property management needs, speak to the Charles Stewart team

Livestock

Peter McConachy 0408 522 878
Jamie McConachy 0418 522 879
Matthew Nelson 0428 315 400
Gerard Bohan 0400 005 541
Dougal McIntyre 0439 575 612

Real Estate

Michael Stewart 0418 520 467
Peter McConachy 0408 522 878
Andrew Rice 0457 105 500
Josh Lamanna 0417 586 032
Daryl Osborne 0419 388 341
Anthony McDonald 0418 593 597

Property Management - 5231 5011

Sarah Higgs Nathan Gray Daniella De Rooy



15 Murrell Street, Winchelsea 5231 5400



Call Matt - 0418 319 357
mbwoodplumbing.au

Servicing Winchelsea & surrounds

- General maintenance & blocked drains
- Gas fitting & hot water service upgrades
- New homes & renovations



mainly music
est. 1990

DIGITAL ANTENNAS SALES & INSTALLATIONS

Hi-Gain Antennas P/L

1/21 Leather St, Breakwater

PH: 5222 2711

Manufactured by us in Geelong
Mon - Fri 7.30am - 4.30pm





Winchelsea Football Netball Club Inc

Hopkins St, Winchelsea winchelseafnc@hotmail.com

Blues News

Janet Fletcher

ROUND 12 –

Winchelsea Blues vs Inverleigh Hawks

Welcome to the results of Round 12, where the Football results were a mixed bag of relief for the Reserve's side and a little disappointing for the Seniors.

RESERVES:

Winchelsea Blues 8.9.57 defeated Inverleigh Hawks 3.5.23

Another fine cold sunny day greeted the Footballers at Eastern Reserve last Saturday where both the Reserves and Seniors were hoping to have a repeat of the opening round winning both games against the Hawks on their home ground. The opening half of Reserves Football was truly lack lustre with both sides managing only 2 points each at quarter time, with the second being much the same – the Blues going into the half time break 2 points up, scores being Winchelsea 1.5.11 to Inverleigh 1.3.9. The Blues managed to assert themselves the better of the two sides in the third quarter going in at the last change leading 31 point to the Hawks 15 points.

The fourth quarter was a better effort again by the Blues and they went on to have a comfortable although low scoring win.

GOALS:

Patrick Dench 3, Bailey Kahle 2, Dustin Baker 1, Tom Kennedy 1, Liam Turner 1.

BEST:

Rory Elliot, Bailey Kahle, Patrick Dench, Dustin Baker, Fraser Amos, Tim Miles.

SENIORS:

Winchelsea Blue's 11.14.80 were defeated by Inverleigh Hawks 18.7.115

Inverleigh bolted away with accurate kicking in the first quarter leading 8.3 to the Blue's 2.5. Winchelsea turned the game around in the second quarter to be within 5 points at half time but were unable to match it with Inverleigh in the second half. Cam Primmer and Indy Parish kicking 9 goals between them, and Caleb Brown back to his best with a B.O.G. performance were high lights for the Senior side.

GOALS:

Cameron Primmer 5, Indy Parish 4, Jordan Huff 1, Matt Gillespie 1.

BEST:

Caleb Brown, Tavae Sauni, Harry Nagle, Cassidy Parish, Lachie Gemmill, Jackson Timms.

Next week the Blues travel to the Viva Energy Oval to play the Corio Devils, games are at the usual start times, lets bring home some wins from Corio!

AUSKICK:

The Winchelsea Auskick Medal and Certificate Presentation was held last Saturday afternoon in the Bendigo Bank room at Eastern Reserve with a huge crowd of Grand Parents, Parents and siblings attending. There are many thanks to those parents who stood up this year to make Winchelsea Auskick enjoy great registered numbers, up from last year to over 50 registered participants this season. Thanks again to Colleen for her excellent work in administration for the group.

LADIES DAY:

Well done to those who organised and helped on the day for the Winchelsea Blue's Ladies Day with proceeds going to help continue the fight against Breast Cancer.

The Member's room was transformed and the Ladies all looked sensational, beautiful food and much laughter proving to be a winner on Saturday afternoon.

THE BLUE'S BISTRO:

This week's menu will be –

- Silverside with Honey Mustard Sauce
- Seafood Baskets, served with salad & chips or vegetables and Winch Pasta made with high protein organic pasta.
- Chicken Nuggets and chips / Fish and chips for the Junior Blues.
- Complimentary Tea & Coffee available from 6pm.

GO BLUES!!

WINCHELSEA Osteopathic Clinic

Back pain • Neck pain • Sporting injuries • Headaches • Shoulder pain • Sciatica

Ph: 5267 2948

40 Main Street (next to the Foxes Den)

Book online:

www.winchelseaosteopathicclinic.com.au





Water Supply
Specialists

WATER SOLUTIONS

74 Dennis Street, Colac
5231 1861



ALL THINGS WATER:

• PUMPS • PIPES
• FITTINGS • TANKS
• POOL CHEMICALS
• IRRIGATION
• WATER PURIFICATION
• SOLAR • REPAIR

Winchelsea
Star

ISSN 2202-6851



9 772202 685002

R.A.K. DAVIS
& SONS

**CARTAGE
CONTRACTORS**

WINCHELSEA

SUPPLIER OF ALL QUARRY MATERIALS, TRUCK HIRE

CARTAGE OF GRAIN, LIME, GYPSUM & SUPER

LANDSCAPE & GARDEN SUPPLIES

56 WILLIS ST, WINCHELSEA

Ph – 5267 2094

Ryan – 0438 672 281

email: rakdavissons@gmail.com

AlfordBuilt

*New Homes, Renovations, Extensions,
Bathrooms, Decks & Pergolas*



0408 583 362



stephen@alfordbuilt.com.au



REGISTERED
Building Practitioner

DEFIBRILLATORS IN WINCHELSEA

Accessible to the public
24 hours a day



The Winchelsea Lions Club has compiled a list of public access defibrillators in Winchelsea. If anyone knows any others with 24 hour public access, please let Linda Carter know 0439 817 263.

Ambulance Victoria
33 Willis Street

Bendigo Bank
11 Main Street

Globe Theatre (Side entrance)
17 Willis Street

Hesse Rural Health
8 Gosney Street

Men's Shed
51 Hesse Street

Netball Courts
Eastern Reserve Hopkins St

Senior Citizens Club
36 Harding Street

Uniting Church
33 Hesse Street

Winchelsea Bowls Club
Hesse St,

Winchelsea Cemetery
McConachy St

Winchelsea Golf Club
13 Anderson Street

Winchelsea Primary School
Main Street

Wurdale Memorial Hall
220 Wurdale Road

