



LIVE | WORK | PLAY

A Modern lifestyle at
affordable prices

PRICE LIST EURO

www.tafagriclobal.com

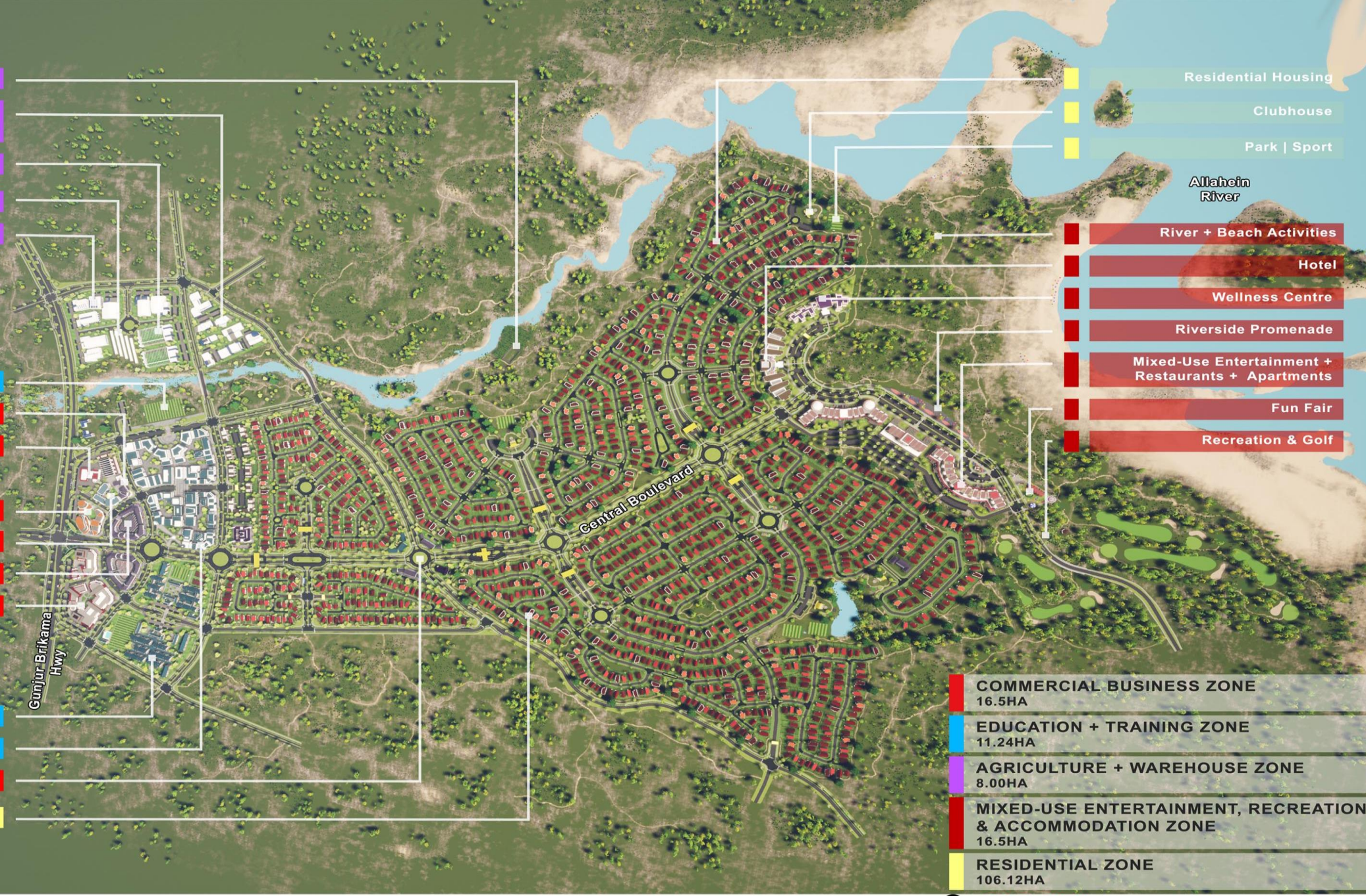
MASTER PLAN

- Aquaculture Farms
- Agricultural Research + Development
- Horticulture Gardens
- Hydroponics Greenhouses
- Showrooms + Warehouses

- Sport
- Police + Fire Services
- Petrol Filling Station

- Offices + Administration
- Health Clinic
- Multi-Transit Hub
- Shops, Market + Businesses

- Senior + Primary Schools
- University + Vocational Training
- Central Community Node
- Residential Housing



- Residential Housing
- Clubhouse
- Park | Sport

- River + Beach Activities
- Hotel
- Wellness Centre
- Riverside Promenade
- Mixed-Use Entertainment + Restaurants + Apartments
- Fun Fair
- Recreation & Golf

COMMERCIAL BUSINESS ZONE	16.5HA
EDUCATION + TRAINING ZONE	11.24HA
AGRICULTURE + WAREHOUSE ZONE	8.00HA
MIXED-USE ENTERTAINMENT, RECREATION & ACCOMMODATION ZONE	16.5HA
RESIDENTIAL ZONE	106.12HA

BENNA ESTATE SITE PLAN



Facilities

- Shopping Center
- Petrol Station
- Market / shops / Restaurants
- Offics / Businesses
- Education
 - Kindergarten
 - Lower & Middle School
 - High School
 - University
 - Vocational School
- Sports Facility & Gym

- Transit Center
- Institution / Government
- Industrial / Logistics
- Agricultural
- Boutique hotel
- Student Accommodation
- Parks/Open space
- Residential Estate
 - Affordable Housing
 - Luxury Villas
 - Retirement Village



2 BEDROOM bungalow 49 SQM

MARIATOU



- 2 BEDROOMS
- BATHS: 2
- LIVING ROOM: 1
- KITCHEN: 1 PARTLY FITTED
- DINNING AREA

PRICE LIST

Plot Number	Plot Size (sqm)	49m2 - 2 bed		
		Price (USD)	25%	Est. Monthly Repayment
BN 148	178.5	€42,074	€10,518	€400
BN 145	180.8	€42,191	€10,548	€401
BN 157	187	€42,507	€10,627	€404
BN 146 /147	187.5	€42,533	€10,633	€404
BN 143	190.5	€42,686	€10,671	€406
BN 144	192	€42,762	€10,691	€406
BN 158	202	€43,272	€10,818	€411
BN 156	265	€46,485	€11,621	€442
BN 122	279	€47,199	€11,800	€448
BN 155	292	€47,862	€11,966	€455
BN 100	312	€48,882	€12,221	€464
BN 139 - 142	312.5	€48,908	€12,227	€465
BN 101	324	€49,494	€12,374	€470
BN 124 & 125	332	€49,902	€12,476	€474
BN 130 & 131	342	€50,412	€12,603	€479
BN 121	344.8	€50,555	€12,639	€480
BN 112	346	€50,616	€12,654	€481
BN 129	352	€50,922	€12,731	€484
BN 114	363	€51,483	€12,871	€489
BN 151 & 153	369	€51,789	€12,947	€492
BN 149	370	€51,840	€12,960	€493
BN 150	372	€51,942	€12,986	€493
BN 152	374	€52,044	€13,011	€494
BN 106 - 120	375	€52,095	€13,024	€495
BN 154	376	€52,146	€13,037	€495
BN 113	380.8	€52,391	€13,098	€498
BN 137	383.5	€52,529	€13,132	€499
BN 138	383.7	€52,539	€13,135	€499
BN 136	384.9	€52,600	€13,150	€500
BN 135	385	€52,605	€13,151	€500
BN 134	386	€52,656	€13,164	€500
BN 133	387	€52,707	€13,177	€501
BN 132	387.9	€52,753	€13,188	€501
BN 128	403.8	€53,564	€13,391	€509
BN 127	413	€54,033	€13,508	€513
BN 126	415	€54,135	€13,534	€514
BN 102	430	€54,900	€13,725	€522
BN 103	435	€55,155	€13,789	€524
BN 105	440	€55,410	€13,853	€526
BN 123	500	€58,470	€14,618	€556

2 BEDROOM bungalow 68 SOM

HAJA



- 2 BEDROOMS
- BATHS:2
- LIVING ROOM: 1
- KITCHEN: 1 PARTLY FITTED
- DINNING AREA

PRICE LIST

Plot Number	Plot Size (sqm)	2 Bed Haja - 68m2		
		Price (USD)	25%	Est. Monthly Repayment
BN 148	178.5	€47,543	€11,886	€452
BN 145	180.8	€47,660	€11,915	€453
BN 157	187	€47,976	€11,994	€456
BN 146 /147	187.5	€48,002	€12,000	€456
BN 143	190.5	€48,155	€12,039	€458
BN 144	192	€48,231	€12,058	€458
BN 158	202	€48,741	€12,185	€463
BN 156	265	€51,954	€12,989	€494
BN 122	279	€52,668	€13,167	€500
BN 155	292	€53,331	€13,333	€507
BN 100	312	€54,351	€13,588	€516
BN 139 - 142	312.5	€54,377	€13,594	€517
BN 101	324	€54,963	€13,741	€522
BN 124 & 125	332	€55,371	€13,843	€526
BN 130 & 131	342	€55,881	€13,970	€531
BN 121	344.8	€56,024	€14,006	€532
BN 112	346	€56,085	€14,021	€533
BN 129	352	€56,391	€14,098	€536
BN 114	363	€56,952	€14,238	€541
BN 151 & 153	369	€57,258	€14,315	€544
BN 149	370	€57,309	€14,327	€544
BN 150	372	€57,411	€14,353	€545
BN 152	374	€57,513	€14,378	€546
BN 106 - 120	375	€57,564	€14,391	€547
BN 154	376	€57,615	€14,404	€547
BN 113	380.8	€57,860	€14,465	€550
BN 137	383.5	€57,998	€14,499	€551
BN 138	383.7	€58,008	€14,502	€551
BN 136	384.9	€58,069	€14,517	€552
BN 135	385	€58,074	€14,519	€552
BN 134	386	€58,125	€14,531	€552
BN 133	387	€58,176	€14,544	€553
BN 132	387.9	€58,222	€14,556	€553
BN 128	403.8	€59,033	€14,758	€561
BN 127	413	€59,502	€14,876	€565
BN 126	415	€59,604	€14,901	€566
BN 102	430	€60,369	€15,092	€574
BN 103	435	€60,624	€15,156	€576
BN 105	440	€60,879	€15,220	€578
BN 123	500	€63,939	€15,985	€607

3 BEDROOM bungalow 70 SOM

OULAYE



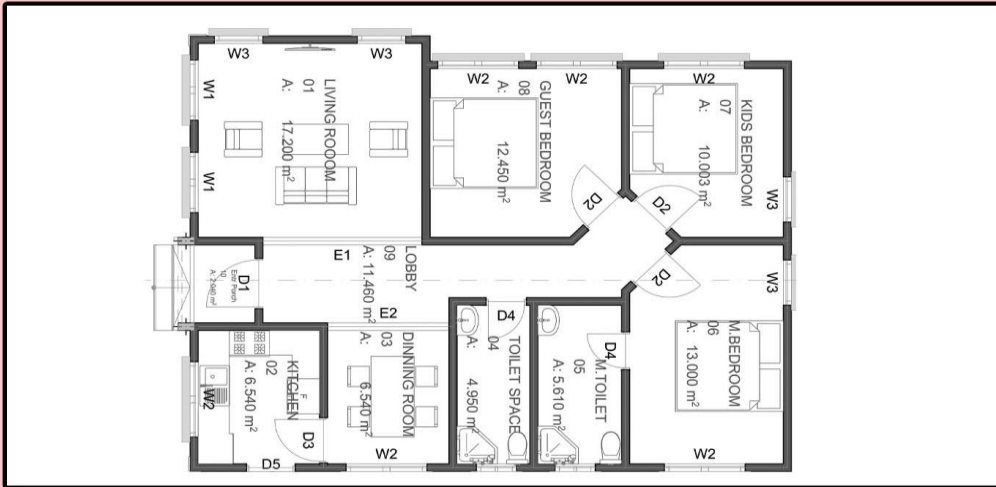
- 3 BEDROOMS
- BATHS: 2
- LIVING ROOM: 1
- KITCHEN: 1 PARTLY FITTED
- DINNING AREA

PRICE LIST

Plot Number	Plot Size (sqm)	70m2 - 3 bed		
		Price (USD)	25%	Est. Monthly Repayment
BN 148	178.5	€48,642	€12,161	€462
BN 145	180.8	€48,760	€12,190	€463
BN 157	187	€49,076	€12,269	€466
BN 146 /147	187.5	€49,101	€12,275	€466
BN 143	190.5	€49,254	€12,314	€468
BN 144	192	€49,331	€12,333	€469
BN 158	202	€49,841	€12,460	€474
BN 156	265	€53,054	€13,263	€504
BN 122	279	€53,768	€13,442	€511
BN 155	292	€54,431	€13,608	€517
BN 100	312	€55,451	€13,863	€527
BN 139 - 142	312.5	€55,476	€13,869	€527
BN 101	324	€56,063	€14,016	€533
BN 124 & 125	332	€56,471	€14,118	€537
BN 130 & 131	342	€56,981	€14,245	€541
BN 121	344.8	€57,124	€14,281	€543
BN 112	346	€57,185	€14,296	€543
BN 129	352	€57,491	€14,373	€546
BN 114	363	€58,052	€14,513	€552
BN 151 & 153	369	€58,358	€14,589	€554
BN 149	370	€58,409	€14,602	€555
BN 150	372	€58,511	€14,628	€556
BN 152	374	€58,613	€14,653	€557
BN 106 - 120	375	€58,664	€14,666	€557
BN 154	376	€58,715	€14,679	€558
BN 113	380.8	€58,960	€14,740	€560
BN 137	383.5	€59,097	€14,774	€561
BN 138	383.7	€59,108	€14,777	€562
BN 136	384.9	€59,169	€14,792	€562
BN 135	385	€59,174	€14,793	€562
BN 134	386	€59,225	€14,806	€563
BN 133	387	€59,276	€14,819	€563
BN 132	387.9	€59,322	€14,830	€564
BN 128	403.8	€60,133	€15,033	€571
BN 127	413	€60,602	€15,150	€576
BN 126	415	€60,704	€15,176	€577
BN 102	430	€61,469	€15,367	€584
BN 103	435	€61,724	€15,431	€586
BN 105	440	€61,979	€15,495	€589
BN 123	500	€65,039	€16,260	€618

3 BEDROOM bungalow 90 SQM

NAFFIE



- 3 BEDROOMS
- BATHS:2
- LIVING ROOM: 1
- KITCHEN: 1 PARTLY FITTED
- DINNING AREA

PRICE LIST

Plot Number	Plot Size (sqm)	3 Bed Naffie - 90m2		
		Price (USD)	25%	Est. Monthly Repayment
BN 156	265	€58,502	€14,625	€556
BN 122	279	€59,216	€14,804	€563
BN 155	292	€59,879	€14,970	€569
BN 100	312	€60,899	€15,225	€579
BN 139 - 142	312.5	€60,924	€15,231	€579
BN 101	324	€61,511	€15,378	€584
BN 124 & 125	332	€61,919	€15,480	€588
BN 130 & 131	342	€62,429	€15,607	€593
BN 121	344.8	€62,571	€15,643	€594
BN 112	346	€62,633	€15,658	€595
BN 129	352	€62,939	€15,735	€598
BN 114	363	€63,500	€15,875	€603
BN 151 & 153	369	€63,806	€15,951	€606
BN 149	370	€63,857	€15,964	€607
BN 150	372	€63,959	€15,990	€608
BN 152	374	€64,061	€16,015	€609
BN 106 - 120	375	€64,112	€16,028	€609
BN 154	376	€64,163	€16,041	€610
BN 113	380.8	€64,407	€16,102	€612
BN 137	383.5	€64,545	€16,136	€613
BN 138	383.7	€64,555	€16,139	€613
BN 136	384.9	€64,616	€16,154	€614
BN 135	385	€64,622	€16,155	€614
BN 134	386	€64,673	€16,168	€614
BN 133	387	€64,724	€16,181	€615
BN 132	387.9	€64,769	€16,192	€615
BN 128	403.8	€65,580	€16,395	€623
BN 127	413	€66,050	€16,512	€628
BN 126	415	€66,152	€16,538	€628
BN 102	430	€66,917	€16,729	€636
BN 103	435	€67,172	€16,793	€638
BN 105	440	€67,427	€16,857	€641
BN 123	500	€70,487	€17,622	€670
BN 104	514	€71,201	€17,800	€676

**3 BEDROOM
bungalow 90 SOM**

Majula



- **BEDROOMS :3**
- **BATHROOM: 3**
- **LIVING ROOM:1**
- **DINNING AREA**
- **KITCHEN: PARTLY FITTED**

PRICE LIST

		3 Bed Majula - 90m2		
Plot Number	Plot Size (sqm)	Price (USD)	25% Down Payment	Est. Monthly Repayment
BN 156	265	€58,502	€14,625	€556
BN 122	279	€59,216	€14,804	€563
BN 155	292	€59,879	€14,970	€569
BN 100	312	€60,899	€15,225	€579
BN 139 - 142	312.5	€60,924	€15,231	€579
BN 101	324	€61,511	€15,378	€584
BN 124 & 125	332	€61,919	€15,480	€588
BN 130 & 131	342	€62,429	€15,607	€593
BN 121	344.8	€62,571	€15,643	€594
BN 112	346	€62,633	€15,658	€595
BN 129	352	€62,939	€15,735	€598
BN 114	363	€63,500	€15,875	€603
BN 151 & 153	369	€63,806	€15,951	€606
BN 149	370	€63,857	€15,964	€607
BN 150	372	€63,959	€15,990	€608
BN 152	374	€64,061	€16,015	€609
BN 106 - 120	375	€64,112	€16,028	€609
BN 154	376	€64,163	€16,041	€610
BN 113	380.8	€64,407	€16,102	€612
BN 137	383.5	€64,545	€16,136	€613
BN 138	383.7	€64,555	€16,139	€613
BN 136	384.9	€64,616	€16,154	€614
BN 135	385	€64,622	€16,155	€614
BN 134	386	€64,673	€16,168	€614
BN 133	387	€64,724	€16,181	€615
BN 132	387.9	€64,769	€16,192	€615
BN 128	403.8	€65,580	€16,395	€623
BN 127	413	€66,050	€16,512	€628
BN 126	415	€66,152	€16,538	€628
BN 102	430	€66,917	€16,729	€636
BN 103	435	€67,172	€16,793	€638
BN 105	440	€67,427	€16,857	€641
BN 123	500	€70,487	€17,622	€670
BN 104	514	€71,201	€17,800	€676

3 BEDROOM
bungalow 100 SQM

SAFFIE



- **BEDROOMS: 3**
- **BATHROOM: 3**
- **LIVING ROOM: 1**
- **DINNING: 1**

PRICE LIST

Plot Number	Plot Size (sqm)	3 Bed Saffie - 100m2		
		Price (USD)	25%	Est. Monthly Repayment
BN 156	265	€64,193	€16,048	€610
BN 122	279	€64,907	€16,227	€617
BN 155	292	€65,570	€16,393	€623
BN 100	312	€66,590	€16,648	€633
BN 139 - 142	312.5	€66,616	€16,654	€633
BN 101	324	€67,202	€16,801	€638
BN 124 & 125	332	€67,610	€16,903	€642
BN 130 & 131	342	€68,120	€17,030	€647
BN 121	344.8	€68,263	€17,066	€649
BN 112	346	€68,324	€17,081	€649
BN 129	352	€68,630	€17,158	€652
BN 114	363	€69,191	€17,298	€657
BN 151 & 153	369	€69,497	€17,374	€660
BN 149	370	€69,548	€17,387	€661
BN 150	372	€69,650	€17,413	€662
BN 152	374	€69,752	€17,438	€663
BN 106 - 120	375	€69,803	€17,451	€663
BN 154	376	€69,854	€17,464	€664
BN 113	380.8	€70,099	€17,525	€666
BN 137	383.5	€70,237	€17,559	€667
BN 138	383.7	€70,247	€17,562	€667
BN 136	384.9	€70,308	€17,577	€668
BN 135	385	€70,313	€17,578	€668
BN 134	386	€70,364	€17,591	€669
BN 133	387	€70,415	€17,604	€669
BN 132	387.9	€70,461	€17,615	€669
BN 128	403.8	€71,272	€17,818	€677
BN 127	413	€71,741	€17,935	€682
BN 126	415	€71,843	€17,961	€683
BN 102	430	€72,608	€18,152	€690
BN 103	435	€72,863	€18,216	€692
BN 105	440	€73,118	€18,280	€695
BN 123	500	€76,178	€19,045	€724
BN 104	514	€76,892	€19,223	€731

3 BEDROOM bungalow 120 SQM

ABBIS



- 3 BEDROOMS
- BATHS: 2
- LIVING ROOM: 1
- KITCHEN: 1 PARTLY FITTED
- DINNING AREA

PRICE LIST

		3 Bed Abbis - 120m2		
Plot Number	Plot Size (sqm)	Price (USD)	25%	Est. Monthly Repayment
BN 100	312	€72,519	€18,130	€689
BN 139 - 142	312.5	€72,545	€18,136	€689
BN 101	324	€73,131	€18,283	€695
BN 124 & 125	332	€73,539	€18,385	€699
BN 130 & 131	342	€74,049	€18,512	€704
BN 121	344.8	€74,192	€18,548	€705
BN 112	346	€74,253	€18,563	€705
BN 129	352	€74,559	€18,640	€708
BN 114	363	€75,120	€18,780	€714
BN 151 & 153	369	€75,426	€18,857	€717
BN 149	370	€75,477	€18,869	€717
BN 150	372	€75,579	€18,895	€718
BN 152	374	€75,681	€18,920	€719
BN 106 - 120	375	€75,732	€18,933	€720
BN 154	376	€75,783	€18,946	€720
BN 113	380.8	€76,028	€19,007	€722
BN 137	383.5	€76,166	€19,041	€724
BN 138	383.7	€76,176	€19,044	€724
BN 136	384.9	€76,237	€19,059	€724
BN 135	385	€76,242	€19,061	€724
BN 134	386	€76,293	€19,073	€725
BN 133	387	€76,344	€19,086	€725
BN 132	387.9	€76,390	€19,097	€726
BN 128	403.8	€77,201	€19,300	€733
BN 127	413	€77,670	€19,418	€738
BN 126	415	€77,772	€19,443	€739
BN 102	430	€78,537	€19,634	€746
BN 103	435	€78,792	€19,698	€749
BN 105	440	€79,047	€19,762	€751
BN 123	500	€82,107	€20,527	€780
BN 104	514	€82,821	€20,705	€787

4 BEDROOM
bungalow 133 SQM

SALLY



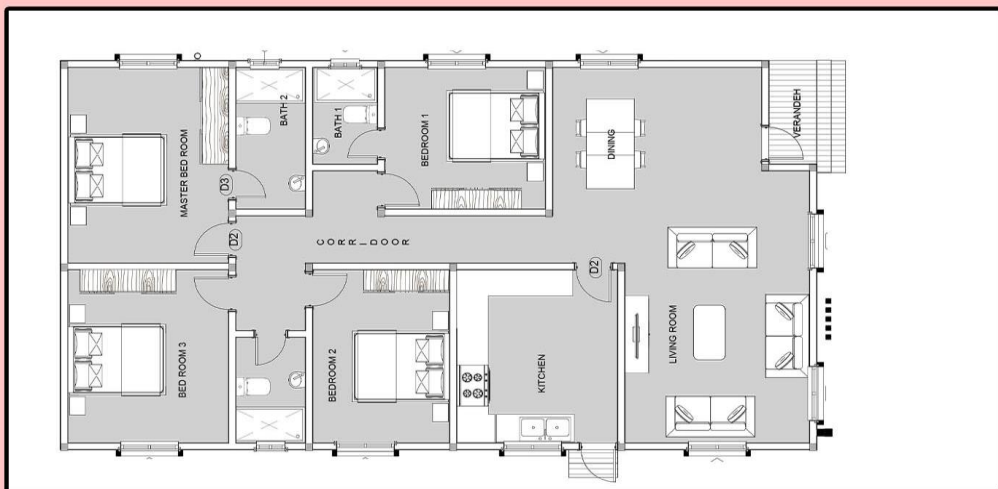
- **BEDROOMS:4**
- **2 ENSUITE BEDROOMS**
- **BATHROOMS: 2 SHARED**
- **LIVING ROOM:1 | PANTRY**
- **KITCHEN: PARTLY FITTED | DINNING AREA**

PRICE LIST

		4 Bed Sally - 133m2		
Plot Number	Plot Size (sqm)	Price (USD)	25%	Est. Monthly Repayment
BN 100	312	€76,433	€19,108	€726
BN 139 - 142	312.5	€76,458	€19,115	€726
BN 101	324	€77,045	€19,261	€732
BN 124 & 125	332	€77,453	€19,363	€736
BN 130 & 131	342	€77,963	€19,491	€741
BN 121	344.8	€78,106	€19,526	€742
BN 112	346	€78,167	€19,542	€743
BN 129	352	€78,473	€19,618	€746
BN 114	363	€79,034	€19,758	€751
BN 151 & 153	369	€79,340	€19,835	€754
BN 149	370	€79,391	€19,848	€754
BN 150	372	€79,493	€19,873	€755
BN 152	374	€79,595	€19,899	€756
BN 106 - 120	375	€79,646	€19,911	€757
BN 154	376	€79,697	€19,924	€757
BN 113	380.8	€79,942	€19,985	€759
BN 137	383.5	€80,079	€20,020	€761
BN 138	383.7	€80,089	€20,022	€761
BN 136	384.9	€80,151	€20,038	€761
BN 135	385	€80,156	€20,039	€762
BN 134	386	€80,207	€20,052	€762
BN 133	387	€80,258	€20,064	€763
BN 132	387.9	€80,304	€20,076	€763
BN 128	403.8	€81,115	€20,279	€771
BN 127	413	€81,584	€20,396	€775
BN 126	415	€81,686	€20,421	€776
BN 102	430	€82,451	€20,613	€783
BN 103	435	€82,706	€20,676	€786
BN 105	440	€82,961	€20,740	€788
BN 123	500	€86,021	€21,505	€817
BN 104	514	€86,735	€21,684	€824

4 BEDROOM bungalow 133 SQM

AISHA



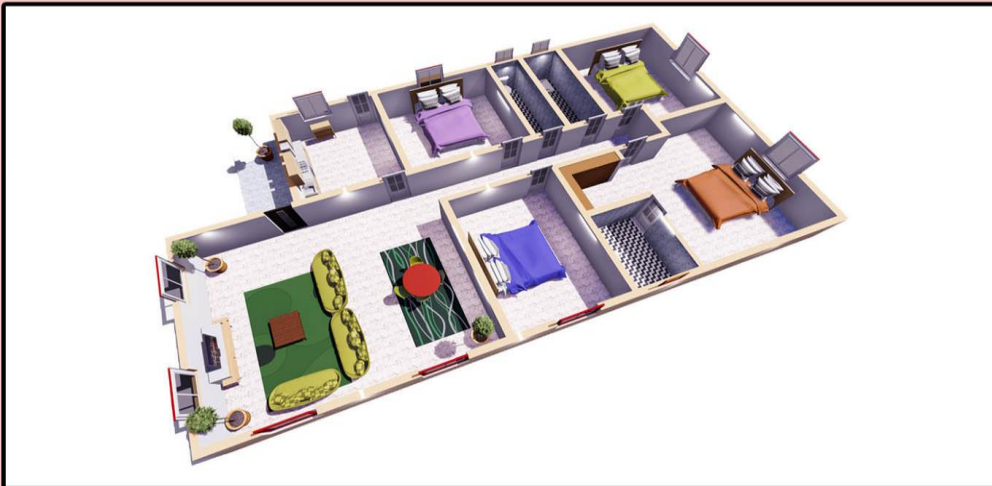
- **BEDROOMS: 4**
- **BATHROOMS 2 AND 1 GUEST WASH ROOM**
- **DINNING: 1**
- **LIVING :1**
- **KITCHEN: 1 PARTLY FITTED**

PRICE LIST

		4 Bed Aisha - 133m2		
Plot Number	Plot Size (sqm)	Price (USD)	25%	Est. Monthly Repayment
BN 100	312	€67,938	€16,984	€645
BN 139 - 142	312.5	€67,963	€16,991	€646
BN 101	324	€68,550	€17,137	€651
BN 124 & 125	332	€68,958	€17,239	€655
BN 130 & 131	342	€69,468	€17,367	€660
BN 121	344.8	€69,611	€17,403	€661
BN 112	346	€69,672	€17,418	€662
BN 129	352	€69,978	€17,494	€665
BN 114	363	€70,539	€17,635	€670
BN 151 & 153	369	€70,845	€17,711	€673
BN 149	370	€70,896	€17,724	€674
BN 150	372	€70,998	€17,749	€675
BN 152	374	€71,100	€17,775	€675
BN 106 - 111	375	€71,151	€17,788	€676
BN 115 - 120	375	€71,151	€17,788	€676
BN 154	376	€71,202	€17,800	€676
BN 113	380.8	€71,447	€17,862	€679
BN 137	383.5	€71,584	€17,896	€680
BN 138	383.7	€71,595	€17,899	€680
BN 136	384.9	€71,656	€17,914	€681
BN 135	385	€71,661	€17,915	€681
BN 134	386	€71,712	€17,928	€681
BN 133	387	€71,763	€17,941	€682
BN 132	387.9	€71,809	€17,952	€682
BN 128	403.8	€72,620	€18,155	€690
BN 127	413	€73,089	€18,272	€694
BN 126	415	€73,191	€18,298	€695
BN 102	430	€73,956	€18,489	€703
BN 103	435	€74,211	€18,553	€705
BN 105	440	€74,466	€18,616	€707
BN 123	500	€77,526	€19,381	€737
BN 104	514	€78,240	€19,560	€743

4 BEDROOM
bungalow 133 SQM

SARATA



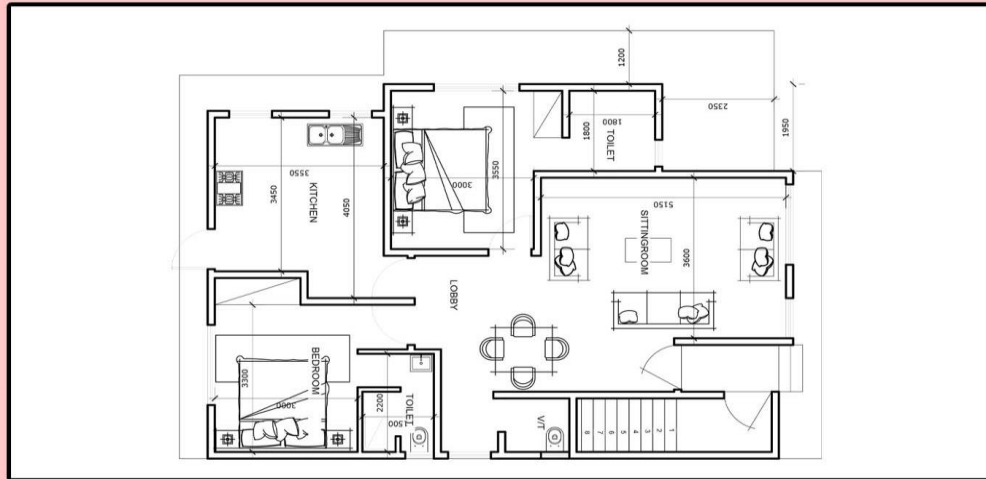
- **BEDROOMS: 4**
- **MASTER BEDROOM WITH WALK-IN CLOSET**
- **BATHROOM: 3**
- **LIVING ROOM : 1**

PRICE LIST

		4 Bed Sarata - 133m2		
Plot Number	Plot Size (sqm)	Price (USD)	25%	Est. Monthly Repayment
BN 100	312	€72,967	€18,242	€693
BN 139 - 142	312.5	€72,993	€18,248	€693
BN 101	324	€73,579	€18,395	€699
BN 124 & 125	332	€73,987	€18,497	€703
BN 130 & 131	342	€74,497	€18,624	€708
BN 121	344.8	€74,640	€18,660	€709
BN 112	346	€74,701	€18,675	€710
BN 129	352	€75,007	€18,752	€713
BN 114	363	€75,568	€18,892	€718
BN 151 & 153	369	€75,874	€18,969	€721
BN 149	370	€75,925	€18,981	€721
BN 150	372	€76,027	€19,007	€722
BN 152	374	€76,129	€19,032	€723
BN 106 - 120	375	€76,180	€19,045	€724
BN 154	376	€76,231	€19,058	€724
BN 113	380.8	€76,476	€19,119	€727
BN 137	383.5	€76,614	€19,153	€728
BN 138	383.7	€76,624	€19,156	€728
BN 136	384.9	€76,685	€19,171	€729
BN 135	385	€76,690	€19,173	€729
BN 134	386	€76,741	€19,185	€729
BN 133	387	€76,792	€19,198	€730
BN 132	387.9	€76,838	€19,209	€730
BN 128	403.8	€77,649	€19,412	€738
BN 127	413	€78,118	€19,530	€742
BN 126	415	€78,220	€19,555	€743
BN 102	430	€78,985	€19,746	€750
BN 103	435	€79,240	€19,810	€753
BN 105	440	€79,495	€19,874	€755
BN 123	500	€82,555	€20,639	€784
BN 104	514	€83,269	€20,817	€791

2 BEDROOM APARTMENT 95 SQM

BETTY



FLOOR PLAN

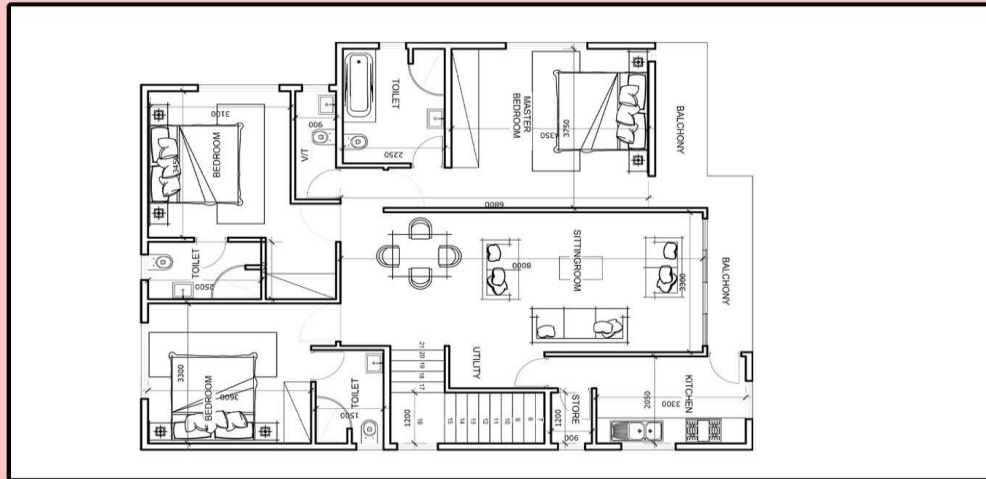
- BEDROOMS: 2
- BATHROOMS: 2 AND 1 GUESTS WASH ROOM
- LIVING ROOM : 1
- DINNING : 1
- KITCHEN: 1 PARTLY FITTED

PRICE LIST

		2 Bed Betty - 95m2 Apartment		
Plot Number	Plot Size (sqm)	Price (USD)	25%	Est. Monthly Repayment
BN 148	178.5	€49,518	€12,380	€470
BN 145	180.8	€49,566	€12,392	€471
BN 157	187	€49,695	€12,424	€472
BN 146 /147	187.5	€49,705	€12,426	€472
BN 143	190.5	€49,768	€12,442	€473
BN 144	192	€49,799	€12,450	€473
BN 158	202	€50,007	€12,502	€475
BN 156	265	€51,317	€12,829	€488
BN 122	279	€51,609	€12,902	€490
BN 155	292	€51,879	€12,970	€493
BN 100	312	€52,295	€13,074	€497
BN 139 - 142	312.5	€52,305	€13,076	€497
BN 101	324	€52,545	€13,136	€499
BN 124 & 125	332	€52,711	€13,178	€501
BN 130 & 131	342	€52,919	€13,230	€503
BN 121	344.8	€52,977	€13,244	€503
BN 112	346	€53,002	€13,251	€504
BN 129	352	€53,127	€13,282	€505
BN 114	363	€53,356	€13,339	€507
BN 151 & 153	369	€53,481	€13,370	€508
BN 149	370	€53,501	€13,375	€508
BN 150	372	€53,543	€13,386	€509
BN 152	374	€53,585	€13,396	€509
BN 106 - 120	375	€53,605	€13,401	€509
BN 154	376	€53,626	€13,407	€509
BN 113	380.8	€53,726	€13,432	€510
BN 137	383.5	€53,782	€13,446	€511
BN 138	383.7	€53,786	€13,447	€511
BN 136	384.9	€53,811	€13,453	€511
BN 135	385	€53,813	€13,453	€511
BN 134	386	€53,834	€13,459	€511
BN 133	387	€53,855	€13,464	€512
BN 132	387.9	€53,874	€13,468	€512
BN 128	403.8	€54,205	€13,551	€515
BN 127	413	€54,396	€13,599	€517
BN 126	415	€54,437	€13,609	€517
BN 102	430	€54,749	€13,687	€520
BN 103	435	€54,853	€13,713	€521
BN 105	440	€54,957	€13,739	€522
BN 123	500	€56,205	€14,051	€534

3 BEDROOM APARTMENT 131 SQM

BETTY



FLOOR PLAN

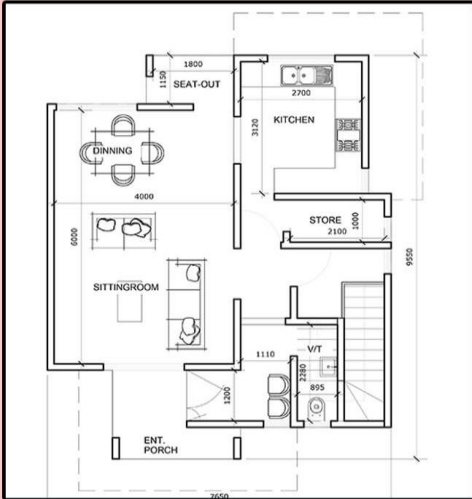
- BEDROOMS: 3
- BATHROOMS: 3 AND 1 GUESTS WASH ROOM
- LIVING ROOM : 1
- DINNING : 1
- KITCHEN: 1 PARTLY FITTED

PRICE LIST

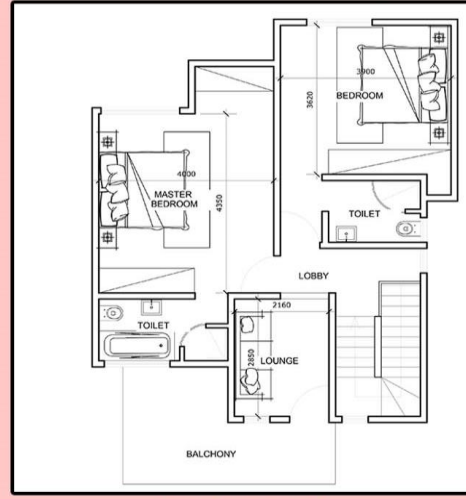
		3 Bed Betty - 131m2 Apartment		
Plot Number	Plot Size (sqm)	Price (USD)	25%	Est. Monthly Repayment
BN 148	178.5	€66,556	€16,639	€632
BN 145	180.8	€66,604	€16,651	€633
BN 157	187	€66,733	€16,683	€634
BN 146 /147	187.5	€66,743	€16,686	€634
BN 143	190.5	€66,805	€16,701	€635
BN 144	192	€66,837	€16,709	€635
BN 158	202	€67,045	€16,761	€637
BN 156	265	€68,355	€17,089	€649
BN 122	279	€68,646	€17,162	€652
BN 155	292	€68,917	€17,229	€655
BN 100	312	€69,333	€17,333	€659
BN 139 - 142	312.5	€69,343	€17,336	€659
BN 101	324	€69,582	€17,396	€661
BN 124 & 125	332	€69,749	€17,437	€663
BN 130 & 131	342	€69,957	€17,489	€665
BN 121	344.8	€70,015	€17,504	€665
BN 112	346	€70,040	€17,510	€665
BN 129	352	€70,165	€17,541	€667
BN 114	363	€70,393	€17,598	€669
BN 151 & 153	369	€70,518	€17,630	€670
BN 149	370	€70,539	€17,635	€670
BN 150	372	€70,581	€17,645	€671
BN 152	374	€70,622	€17,656	€671
BN 106 - 120	375	€70,643	€17,661	€671
BN 154	376	€70,664	€17,666	€671
BN 113	380.8	€70,764	€17,691	€672
BN 137	383.5	€70,820	€17,705	€673
BN 138	383.7	€70,824	€17,706	€673
BN 136	384.9	€70,849	€17,712	€673
BN 135	385	€70,851	€17,713	€673
BN 134	386	€70,872	€17,718	€673
BN 133	387	€70,893	€17,723	€674
BN 132	387.9	€70,911	€17,728	€674
BN 128	403.8	€71,242	€17,811	€677
BN 127	413	€71,433	€17,858	€679
BN 126	415	€71,475	€17,869	€679
BN 102	430	€71,787	€17,947	€682
BN 103	435	€71,891	€17,973	€683
BN 105	440	€71,995	€17,999	€684
BN 123	500	€73,243	€18,311	€696

2 BEDROOM STOREY 141 SQM

AMIE



GROUND FLOOR



TOP FLOOR

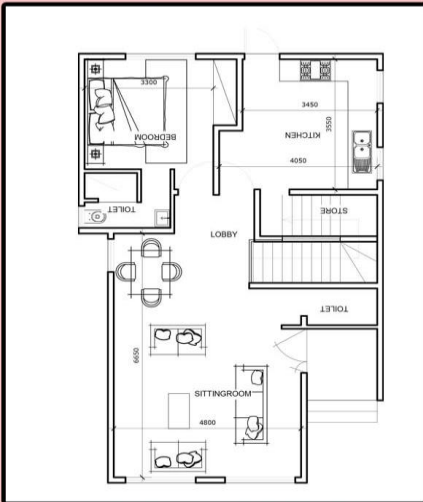
- BEDROOMS: 2
- BATHROOMS: 3
- LIVING ROOM : 1
- DINNING: 1
- KITCHEN: 1 PARTLY FITTED

PRICE LIST

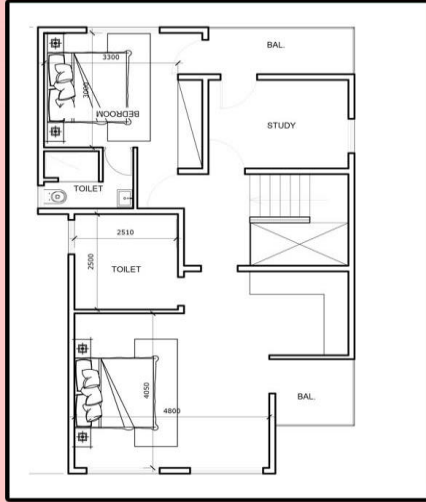
	PLOT SIZE	2 Bed Amie - 141m2 Storey		
		Price (EURO)	25%	Est. Monthly Repayment
BN 148	178.5	€91,691	€22,923	€871
BN 145	180.8	€91,808	€22,952	€872
BN 157	187	€92,124	€23,031	€875
BN 146 /147	187.5	€92,150	€23,037	€875
BN 143	190.5	€92,303	€23,076	€877
BN 144	192	€92,379	€23,095	€878
BN 158	202	€92,889	€23,222	€883
BN 156	265	€96,102	€24,026	€913
BN 122	279	€96,816	€24,204	€920
BN 155	292	€97,479	€24,370	€926
BN 100	312	€98,499	€24,625	€936
BN 139 - 142	312.5	€98,525	€24,631	€936
BN 101	324	€99,111	€24,778	€942
BN 124 & 125	332	€99,519	€24,880	€946
BN 130 & 131	342	€100,029	€25,007	€950
BN 121	344.8	€100,172	€25,043	€952
BN 112	346	€100,233	€25,058	€952
BN 129	352	€100,539	€25,135	€955
BN 114	363	€101,100	€25,275	€961
BN 151 & 153	369	€101,406	€25,352	€963
BN 149	370	€101,457	€25,364	€964
BN 150	372	€101,559	€25,390	€965
BN 152	374	€101,661	€25,415	€966
BN 106 - 111	375	€101,712	€25,428	€966
BN 115 - 120	375	€101,712	€25,428	€966
BN 154	376	€101,763	€25,441	€967
BN 113	380.8	€102,008	€25,502	€969
BN 137	383.5	€102,146	€25,536	€970
BN 138	383.7	€102,156	€25,539	€971
BN 136	384.9	€102,217	€25,554	€971
BN 135	385	€102,222	€25,556	€971
BN 134	386	€102,273	€25,568	€972
BN 133	387	€102,324	€25,581	€972
BN 132	387.9	€102,370	€25,593	€973
BN 128	403.8	€103,181	€25,795	€980
BN 127	413	€103,650	€25,913	€985
BN 126	415	€103,752	€25,938	€986
BN 102	430	€104,517	€26,129	€993
BN 103	435	€104,772	€26,193	€995
BN 105	440	€105,027	€26,257	€998

3 BEDROOM STOREY 166 SQM

BINTA



GROUND FLOOR



TOP FLOOR

- BEDROOMS: 3
- BATHROOMS: 3 AND 1 GUESTS WASH ROOM
- LIVING ROOM : 1
- DINNING : 1
- KITCHEN: 1 PARTLY FITTED

PRICE LIST

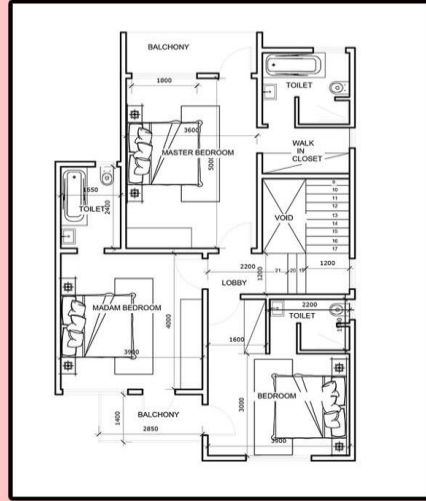
3 Bed Binta - 166m2 Storey				
	PLOT SIZE	Price (EURO)	25%	Est. Monthly Repayment
BN 148	178.5	€105,732	€26,433	€1,005
BN 145	180.8	€105,849	€26,462	€1,006
BN 157	187	€106,166	€26,541	€1,009
BN 146 /147	187.5	€106,191	€26,548	€1,009
BN 143	190.5	€106,344	€26,586	€1,010
BN 144	192	€106,421	€26,605	€1,011
BN 158	202	€106,931	€26,733	€1,016
BN 156	265	€110,144	€27,536	€1,046
BN 122	279	€110,858	€27,714	€1,053
BN 155	292	€111,521	€27,880	€1,060
BN 100	312	€112,541	€28,135	€1,069
BN 139 - 142	312.5	€112,566	€28,142	€1,069
BN 101	324	€113,153	€28,288	€1,075
BN 124 & 125	332	€113,561	€28,390	€1,079
BN 130 & 131	342	€114,071	€28,518	€1,084
BN 121	344.8	€114,213	€28,553	€1,085
BN 112	346	€114,275	€28,569	€1,086
BN 129	352	€114,581	€28,645	€1,089
BN 114	363	€115,142	€28,785	€1,094
BN 151 & 153	369	€115,448	€28,862	€1,097
BN 149	370	€115,499	€28,875	€1,097
BN 150	372	€115,601	€28,900	€1,098
BN 152	374	€115,703	€28,926	€1,099
BN 106 - 111	375	€115,754	€28,938	€1,100
BN 115 - 120	375	€115,754	€28,938	€1,100
BN 154	376	€115,805	€28,951	€1,100
BN 113	380.8	€116,049	€29,012	€1,103
BN 137	383.5	€116,187	€29,047	€1,104
BN 138	383.7	€116,197	€29,049	€1,104
BN 136	384.9	€116,258	€29,065	€1,105
BN 135	385	€116,264	€29,066	€1,105
BN 134	386	€116,315	€29,079	€1,105
BN 133	387	€116,366	€29,091	€1,106
BN 132	387.9	€116,411	€29,103	€1,106
BN 128	403.8	€117,222	€29,306	€1,114
BN 127	413	€117,692	€29,423	€1,118
BN 126	415	€117,794	€29,448	€1,119
BN 102	430	€118,559	€29,640	€1,126
BN 103	435	€118,814	€29,703	€1,129
BN 105	440	€119,069	€29,767	€1,131

4 BEDROOM STORY 176 SQM

NYIMA



GROUND FLOOR



TOP FLOOR

- BEDROOMS: 4
- MASTER BEDROOM WITH WALK-IN CLOSET
- BATHROOMS: 4 AND 1 GUESTS WASH ROOM
- LIVING ROOM : 1 AND DINNING : 1
- KITCHEN : 1 PARTLY FITTED

PRICE LIST

		4 Bed Nyima - 176m2 Storey		
	PLOT SIZE	Price (EURO)	25%	Est. Monthly Repayment
BN 148	178.5	€112,036	€28,009	€1,064
BN 145	180.8	€112,154	€28,038	€1,066
BN 157	187	€112,470	€28,117	€1,069
BN 146 /147	187.5	€112,495	€28,124	€1,069
BN 143	190.5	€112,648	€28,162	€1,070
BN 144	192	€112,725	€28,181	€1,071
BN 158	202	€113,235	€28,309	€1,076
BN 156	265	€116,448	€29,112	€1,106
BN 122	279	€117,162	€29,290	€1,113
BN 155	292	€117,825	€29,456	€1,119
BN 100	312	€118,845	€29,711	€1,129
BN 139 - 142	312.5	€118,870	€29,718	€1,129
BN 101	324	€119,457	€29,864	€1,135
BN 124 & 125	332	€124,863	€31,216	€1,186
BN 130 & 131	342	€124,098	€31,024	€1,179
BN 121	344.8	€120,518	€30,129	€1,145
BN 112	346	€120,579	€30,145	€1,146
BN 129	352	€120,885	€30,221	€1,148
BN 114	363	€121,446	€30,361	€1,154
BN 151 & 153	369	€121,752	€30,438	€1,157
BN 149	370	€121,803	€30,451	€1,157
BN 150	372	€121,905	€30,476	€1,158
BN 152	374	€122,007	€30,502	€1,159
BN 106 - 111	375	€122,058	€30,514	€1,160
BN 115 - 120	375	€122,058	€30,514	€1,160
BN 154	376	€122,109	€30,527	€1,160
BN 113	380.8	€122,354	€30,588	€1,162
BN 137	383.5	€122,491	€30,623	€1,164
BN 138	383.7	€122,502	€30,625	€1,164
BN 136	384.9	€122,563	€30,641	€1,164
BN 135	385	€122,568	€30,642	€1,164
BN 134	386	€122,619	€30,655	€1,165
BN 133	387	€122,670	€30,667	€1,165
BN 132	387.9	€122,716	€30,679	€1,166
BN 128	403.8	€123,527	€30,882	€1,174
BN 127	413	€123,996	€30,999	€1,178
BN 126	415	€124,098	€31,024	€1,179
BN 102	430	€124,863	€31,216	€1,186
BN 103	435	€125,118	€31,279	€1,189
BN 105	440	€125,373	€31,343	€1,191

CONTACT US



THE GAMBIA

Email: info@tafafricaglobal.com

Tel: +220 776 - 2333

Tel: +220 376 - 2333

Address: 17-19 Kaira Avenue, Madiba Mall,
Brufut Gardens Estate, P.O. Box 121, The
Gambia

NIGERIA

Email: info@rivtaf.com

Tel: +2348058094194

Address: RIVTAF Golf Estate, End of Peter
Odili Road, Trans Amadi, Port Harcourt,
Rivers State, Nigeria

www.tafafricaglobal.com