

SHANGRI-LA COLLECTION

SHANGRI-LA

 COLLECTION

uniflex

SHANGRI-LA COLLECTION



Uma concepção inovadora, com lâminas ajustáveis de tecido que flutuam em linhas horizontais entre telas transparentes. As lâminas proporcionam ampla escala de luminosidade, com efeitos de transparência e translucidez até o escurecimento mais intenso. São 4 coleções com tecidos que oferecem uma luminosidade suave e um visual agradável em lâminas de duas ou três polegadas.

DIFERENCIAIS

- ▶ 4 Coleções e mais de 20 opções de tecidos;
- ▶ Lâminas de 2 ou 3 polegadas;
- ▶ Acionamento manual, monocontrole e motorizado;
- ▶ Lâminas com 99% de eficiência blackout
- ▶ 5 opções de lâminas entre 2 e 3 polegadas - 87% blocklight



POSICIONE O MOUSE NO
CANTO INFERIOR PARA
NAVEGAR ENTRE AS PÁGINAS.



CLIQUE AQUI PARA ACESSAR
A FICHA TÉCNICA DE
CADA PRODUTO.

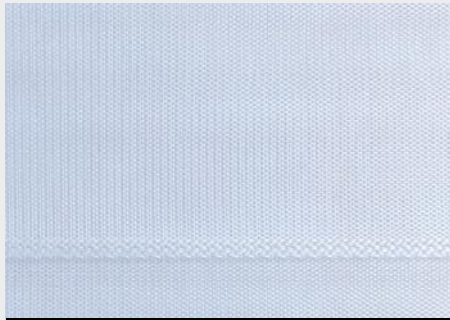
SHANGRI-LA COLLECTION





MILA
COLLECTION

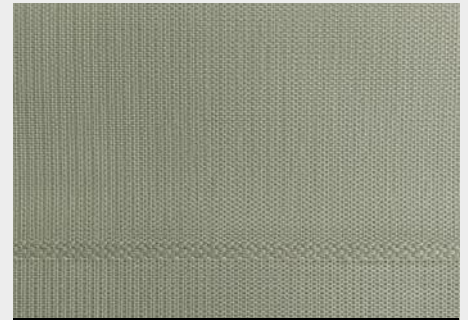
MILA COLLECTION



1710 WHITE



1712 SHELL



1715 SAND



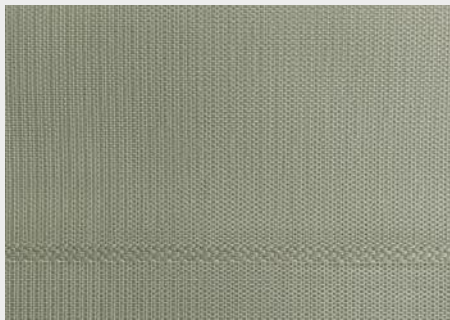
1716 LIMESTONE



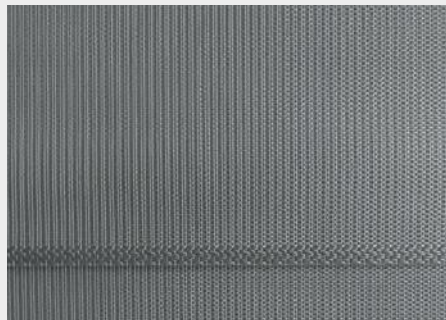
3710 WHITE



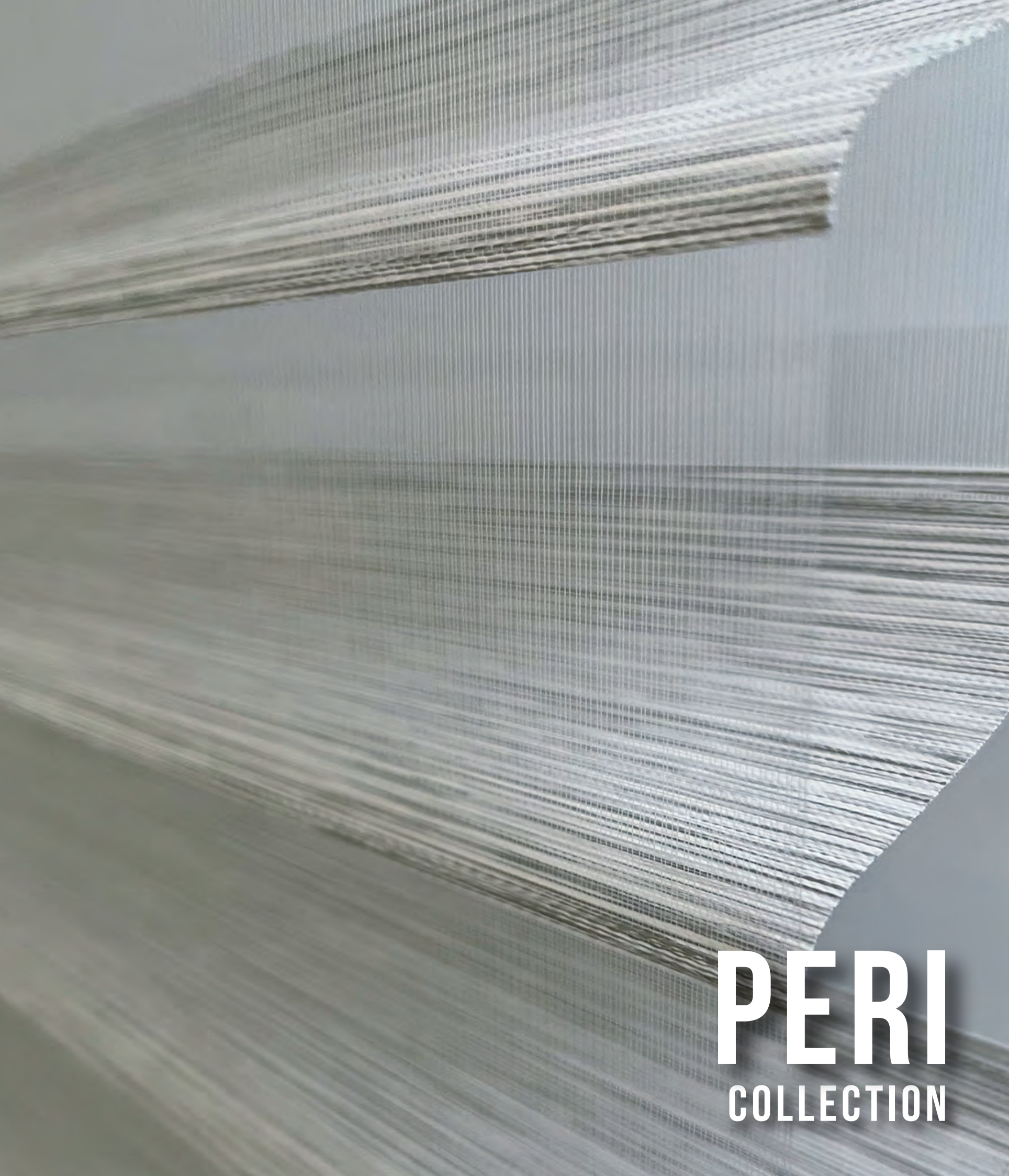
3712 SHELL



3715 SAND

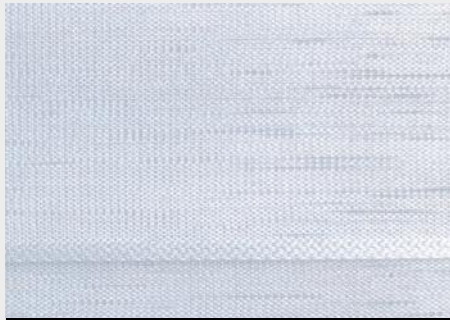


3716 LIMESTONE



PERI
COLLECTION

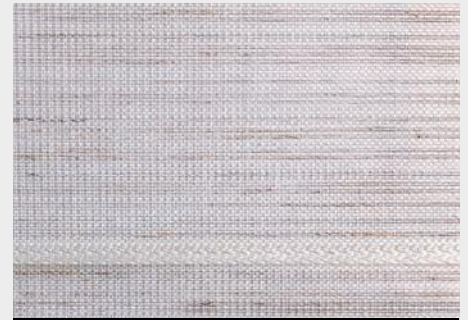
PERI COLLECTION



1510 CLOUD



1511 WHITE



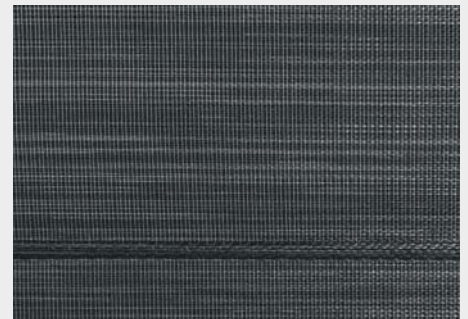
1512 NEUTRAL



1523 BEIGE



1526 GREY



1527 GRAPHITE



3510 CLOUD



3526 GREY





A close-up photograph of a fabric with a complex geometric pattern. The pattern consists of large, overlapping triangles and quadrilaterals in shades of green and white. The fabric has a fine, woven texture. The lighting is soft, highlighting the texture and the interplay of colors. In the bottom right corner, the text 'KAILA COLLECTION' is printed in a bold, white, sans-serif font.

KAILA
COLLECTION

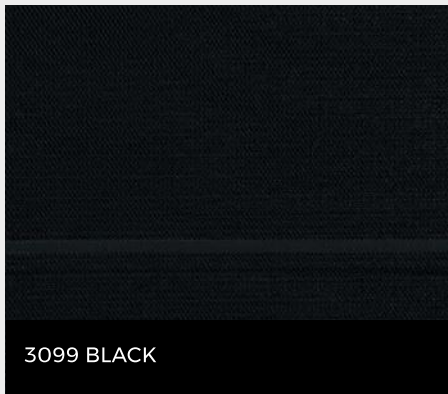
KAILA COLLECTION





EVEREST
COLLECTION

EVEREST COLLECTION





**SWISS
MANAGEMENT
BRAZILIAN
DESIGN**