

ARMOIRE
●DOT
STYLE

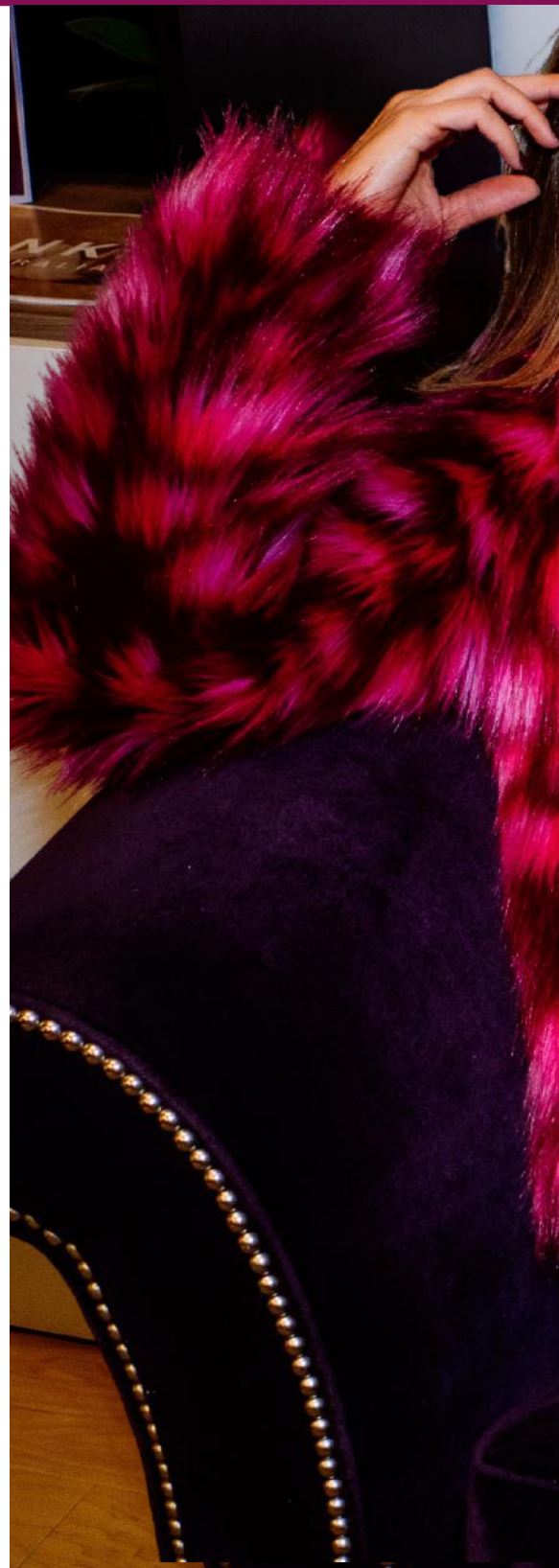
26
TRENDS
TO WATCH
IN 2026

TREND
REPORT

CONTENTS

COLOR STORIES	4
TEXTURE + PATTERN	18
SILHOUETTES + SHAPE	28
WORKWEAR	42
OFF THE CLOCK	52
DENIM DETAILS	60

Some links to accessories are affiliate links, which means Armoire may earn a small commission if you make a purchase. Selected items are never at the expense of great style!



2026 fashion is all about joyful expression, shape exploration, and color. Luxe fabrics, textures, and proportions anchor the year's looks.

But it's not about chasing the latest trends simply to be fashionable. It's about discovering looks that feel unmistakably you. Because, like *you*, great style evolves.



COLOR STORIES



The palette this year is intentional, expressive, and deeply wearable, with colors that carry mood, confidence, and clarity. These are hues designed to work hard in real wardrobes, not just trend reports.

The year ahead will bring elevated neutrals and joy-forward brights. Whether worn head-to-toe or layered thoughtfully into everyday outfits, these colors reflect a more nuanced, personal approach to getting dressed.



COLOR STORIES

BROWN IS THE NEW BLACK





Brown has fully stepped into its power era. It's rich, grounded, and far more elevated than the neutrals of the past. Think espresso, chocolate, and cacao worn head-to-toe or paired with saturated colors for a look that feels quietly luxurious.

**BROWSE
COLLECTION**

COLOR STORIES

CERULEAN BLUE





A crisp, optimistic shade that sits between sky and sea. It's brighter than navy, yet softer than cobalt. In 2026, it's bringing confidence to tailoring, knits, and statement accessories without feeling loud.

**BROWSE
COLLECTION**

COLOR STORIES

COLOR FLARES





The joy-forward statement of 2026: saturated, high-impact hues like rich teal, vibrant violet, chartreuse, and coral red worn unapologetically. These aren't accents anymore—they dominate wardrobes.



COLOR STORIES

DUSTY PASTELS





Softening the 2026 palette, expect muted takes on pink, lemon meringue, and gentle greens. Often styled in rosy hues and low-contrast pairings, these colors feel calm, flattering, and quietly sophisticated rather than sweet or saccharine.

**BROWSE
COLLECTION**

COLOR STORIES

NOT-QUITE-NEUTRAL NEUTRALS





Mushroom, putty, martini olive, and warm stone define 2026 utility dressing. They're earthy, complex shades that feel intentional rather than basic. They make cargo, workwear, and minimalist layers look refined, modern, and endlessly wearable.



COLOR STORIES

BORDEAUX





The plum + berry evolution of 2026: wine, oxblood, and mulberry tones blended into a richer, moodier, less-red palette that reads polished, powerful, and unmistakably royal.

**BROWSE
COLLECTION**

TEXTURE & PATTERN



In 2026, texture and pattern do the heavy lifting. The most modern looks rely on tactile fabrics and confident prints to create interest, depth, and dimension. It's a shift toward pieces that feel as good as they look, elevated through material, finish, and scale.

This season's standout textures and patterns include supple finishes that soften tailoring, fluid fabrics that move effortlessly through the day, and prints that act as statement-makers without overwhelming an outfit. These trends turn everyday dressing into something quietly compelling.



TEXTURE + PATTERN

FAUX LEATHER + VEGAN SUEDE





Faux leather and vegan suede remain standouts this year. Sleek, soft, texture-forward neutrals that bring depth and edge to modern wardrobes while reflecting fashion's continued move toward conscious, cruelty-free materials.

**BROWSE
COLLECTION**

TEXTURE + PATTERN

MATTE SATIN + WASHED SILK





Luminous, fluid fabrics define a quieter kind of luxury in 2026. These textures bring ease and polish to everyday dressing, making silk feel relaxed, wearable, and modern rather than precious.

**BROWSE
COLLECTION**

TEXTURE + PATTERN

LEOPARD AS A NEUTRAL





Leopard as a neutral cements its status as a true wardrobe staple. It's grounded enough to pair with everything, yet bold enough to carry an outfit. Worn in classic scales and muted tones, it adds texture without feeling loud or trendy.

**BROWSE
COLLECTION**

TEXTURE + PATTERN

BOLD GRAPHIC PRINTS





Dimensional prints make a strong case in 2026, with high-contrast patterns and oversized motifs bringing instant energy. These prints are worn as the focal point of an otherwise pared-back look.

**BROWSE
COLLECTION**

SILHOUETTE & SHAPE



Shape becomes a tool for self-expression. This is a year defined by contrast: sculptural moments balanced by clean lines, utility grounded by elegance, and strong verticals that quietly command attention.

The defining silhouettes ahead focus on structure, movement, and proportion. Pieces are designed to create impact through cut and scale. Whether sharply elongated, softly contoured, or boldly architectural, these shapes offer an unmistakable modern edge.



SILHOUETTES + SHAPE

SCULPTURAL SHAPES





Sculptural shapes take center stage, with statement sleeves and shoulders. Puff, balloon, and exaggerated cuts will add drama. These bold proportions turn simple pieces into focal points, balancing power and artistry in everyday dressing.

**BROWSE
COLLECTION**

SILHOUETTES + SHAPE

SCULPTURAL HEELS





As clothing becomes more sculptural, footwear follows with the same sense of form and intention. In 2026, architectural heels complement clean lines and expressive silhouettes, reinforcing a look that feels considered, creative, and confident.



SILHOUETTES + SHAPE

SLIM SKIRTS





Slim skirts return as a refined counterpoint to oversized silhouettes, favoring clean lines and an elongated shape. Worn low-slung or at the waist, in both structured and fluid fabrics, they feel modern, versatile, and quietly powerful.

**BROWSE
COLLECTION**

SILHOUETTES + SHAPE

LONGLINE EVERYTHING





Verticality rules. Longline everything defines silhouettes, with elongated vests, blazers, knits, and coats creating strong vertical lines. The effect is sleek and commanding. It's proof that length is the year's most powerful styling tool.

SILHOUETTES + SHAPE

IT'S A WRAP





Modern silhouettes evolve through wraps and asymmetrical closures that feel architectural. The result is flattering, dynamic shape with movement and edge to contour the body without looking soft.

**BROWSE
COLLECTION**

SILHOUETTES + SHAPE

BOILERSUITS





Boilersuits & rompers carry utility dressing forward, with workwear-inspired one-pieces appearing on and off the runway. Equal parts functional and fashion-forward, they offer an effortless, all-in-one approach.



WORK WEAR



Workwear in 2026 reflects how we actually live and lead. The focus shifts from rigid rules to pieces that move and adapt. Authority is still the goal, but comfort, ease, and self-expression are now part of the equation.

This new era of work dressing favors versatility and confidence over convention. Silhouettes soften, lengths feel considered, and fabrics do more of the work for you. These are clothes designed to carry you through full days, shifting roles, and real life.



WORKWEAR

THE NEW OFFICE BLOUSE





The new office blouse softens workwear in 2026, favoring fluid drape, tie-necks, pleating, and subtle sheen over rigid tailoring. Polished but relaxed, it brings ease and femininity back into professional dressing without sacrificing authority.

**BROWSE
COLLECTION**

WORKWEAR

KNIT DRESSES





Power dressing no longer has to feel stiff. Knit dresses as workwear redefine office dressing in 2026, with ribbed, sculpted, and ponte knits stepping in for traditional suiting. Structured yet comfortable, they deliver polish with ease.

**BROWSE
COLLECTION**

WORKWEAR

MIDI LENGTH DOMINANCE





Midi-length dominance continues in 2026, with dresses and skirts landing at mid-calf for a silhouette that's easy, elegant, and office-safe. Flattering and versatile, it's a length that works across settings.

**BROWSE
COLLECTION**

WORKWEAR

THE STATEMENT DAY DRESS





The statement day dress defines effortless style. It's designed to stand on its own with zero overthinking required. With built-in wow, you can simply add shoes and go.

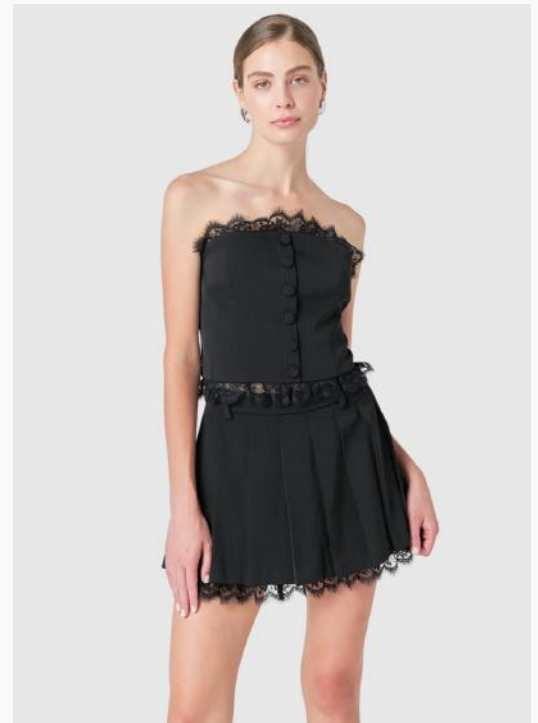
**BROWSE
COLLECTION**

OFF THE CLOCK



Off-duty style in 2026 is anything but an afterthought. Comfort and style aren't competing priorities, but equal partners. The focus is on pieces that feel expressive and effortless, with just enough edge to make everyday dressing feel considered.

The trends shaping downtime dressing balance softness with structure and coordination with individuality. Style doesn't clock out when the workday ends—it simply shifts gears.



OFF THE CLOCK

LINGERIE DETAILS





Lingerie details take a confident turn, with corsets and lingerie-inspired trims styled to be noticed. Balanced with tailoring or everyday staples, the look feels empowered rather than provocative.

**BROWSE
COLLECTION**



Sets remain a key trend in 2026, with coordinated pieces designed to be worn together for instant polish. Effortless and intentional, they simplify getting dressed while still allowing room to mix, match, and personalize.



OFF THE CLOCK

LIGHTWEIGHT LAYERING JACKETS





Lightweight layering jackets lead outerwear this year, from cropped trenches to soft utility styles and streamlined shackets. More than warmth, they add structure and finish to the look. This year, they're a key part of the outfit.

**BROWSE
COLLECTION**

DENIM DETAILS



The latest chapter of denim's long history brings us silhouettes that flatter, proportions that feel current, and details that add interest without sacrificing versatility. It's denim designed to work hard, wear well, and quietly elevate the everyday.

The focus shifts from trend cycling to thoughtful design where cut, proportion, and detail are what make a pair feel modern. Jeans stand on their own, requiring little more than a great top and shoes to feel complete.



DENIM DETAILS

JEANS WITH PERSONALITY





Jeans with personality stand out in 2026. Statement denim features embellishments, unique washes, and unexpected details. These jeans anchor an outfit all on their own.



HOW TO WEAR IT:
[See outfit formulas on our Substack](#)

DENIM DETAILS

CROPPED WIDE-LEG





This year, cropped wide-leg jeans are styled with tall boots worn under the flare, creating a clean, elongated line. The look is balanced, seasonless, and quietly directional.

**BROWSE
COLLECTION**

DENIM DETAILS

RELAXED STRAIGHT LEG





Relaxed straight pants hit the sweet spot now. They're neither skinny nor super-wide, but perfectly in between. Clean, modern, and endlessly wearable, they offer ease without sloppiness and structure without restriction.

**BROWSE
COLLECTION**

ONLY THE BEST FOR YOU

BEST FOR
PROFESSIONAL
CLOTHES

People

BEST
PROFESSIONAL
STYLING

COSMOPOLITAN

BEST FOR
DESIGNER LABELS

woman's day

BEST FOR
HIGH-END BRANDS

InStyle

BEST
SPLURGE

Us WEEKLY

BEST FOR
SPECIAL EVENTS

VARIETY

BEST FOR
CASUAL CLOTHING

Forbes

BEST FOR
FAST SHIPPING

NEWYORKPOST

BEST
PERSONALIZED
STYLING OPTIONS

ELLE

BEST FOR
PHOTOSHOOTS

InStyle

BEST FOR
HIGHER-END FASHION

MSA
My Subscription Addiction

BEST FOR
GETTING STYLE INSPO
FROM OTHER USERS

COSMOPOLITAN