



YEARS  
OF  
STORIES

2022 Annual Report

# Dear Partners in Giving,

Twenty-five years ago, a small group of trailblazing community members came together to improve our community. The organization they built has since evolved from an affiliate community foundation to a thriving independent community foundation. Roscommon County Community Foundation (RCCCF) offers our deepest gratitude to all who have nurtured our growth as an organization and helped to breathe life into our unwavering mission.

With your help, Roscommon County Community Foundation:

- Awarded over \$2.2 million in scholarships to help students achieve their dreams through higher education
- Invested nearly \$2.5 million in grant funding to local nonprofits for programs and projects
- Manages 98 funds that were established through the generosity of donors

As the needs in our community evolve, we will be ready to adapt and help. We are truly grateful to all who have strengthened RCCCF with gifts of your time and resources these past 25 years. Our work has just begun. We give our sincerest thanks to our donors, grant committees, and other nonprofits; and feel great pride in the role we all share in caring for our communities.

With sincere gratitude,



Suzanne E. Luck, Executive Director



Brent Cryderman, President



## Mission

To encourage positive change for generations to come. For Good. For Ever. For Everyone.

## Vision

To enrich and improve the quality of life in our community.

### Audit Information

The three most recent audit and IRS Form 990 are available online at [myrccf.org](http://myrccf.org).

### Investment Manager Information

Names of investment managers, fees charged, and body or individuals responsible for investment and oversight are available upon request.

### Statement of Diversity, Equity, and Inclusion

Roscommon County Community Foundation is continuously committed to the ongoing effort of striving for diversity, equity, and inclusion in every facet of operation. We exist to serve for good, for ever, for everyone; and value the importance of ensuring an accessible, equitable, inclusive environment - for everyone.



Excellence. Accountability. Impact.™



Platinum  
Transparency  
2023

**Candid.**

The National Standards Seal indicates official confirmation that the Roscommon County Community Foundation has met the most rigorous standards in philanthropy. It affirms our commitment to financial security, transparency and accountability. It says our grant-making includes an open competitive process designed to address the changing needs of our community. The National Standards Seal also confirms our history of honoring donors' wishes that support the arts, educate our youth, protect our environment, build a library, address critical human needs, and support countless other important causes.

The Council of Michigan Foundations logo means that we are an accredited foundation making a difference, right here at home. Our organization has also earned a 2023 Platinum Seal of Transparency. Now, everyone can view our financial details and learn about the people at our organization on [Guidestar.org](http://Guidestar.org).

# [ Board & Staff ]



Suzanne Luck  
Executive Director



Brent Cryderman  
Chair



Diane Nielsen  
Vice Chair



Anita Sheppard  
Treasurer



Sara Morley LaCroix  
Secretary



Tracy Bosworth



Calvin Hisson



Melissa Sullivan



Ben Elliott



Cyle Gillman



Bryan Thompson



Cassandra Freeman  
Business Manager



Echo Odorico  
Communications & Program  
Coordinator

*"I love being on the board. I love what I learn about our community just through serving as a board member."*

- Tracy Bosworth, Board Trustee

*"When you support the community foundation, your gift will grow and provide lasting support to the community."*

- Ben Elliott, Board Trustee

# [ Our Story ]



Pictured: John W. Wade  
Founding Member  
First RCCF Board President  
Emeritus Board Member  
(1997-2009)

1997

North Central Michigan Community Foundation was established in June; Roscommon County was one of five counties being served by NCMCF



Pictured: Rex and Arlene Gillen

2003

Upon the passing of Arlene Gillen, the largest gift in RCCF history - 2.9 million - was left to establish a scholarship fund in Rex and Arlene Gillen's name for furthering education

2007

RCCF proudly serves Roscommon County for 10 years



Excellence. Accountability. Impact.™

2010

RCCF receives recognition by the Council on Foundations and achieves compliance to become a nationally accredited community foundation



Pictured:  
Brent Cryderman  
Board President (2018-Present)

2018

Brent Cryderman is elected as Board President in July



2022

RCCF proudly serves Roscommon County for 25 years

Roscommon County committee of NCMCF decides to become an independent community foundation. Receives 501(c)(3) status in the fall

2001



Pictured: Mary Fry  
First Executive Director (2001-2014)

RCCF has 30 funds established to help community projects

2005

RCCF hits \$5 million in assets as of Dec. 31

2009

Mary Fry announces retirement as President/CEO of RCCF; Suzanne Luck accepts Executive Director position, beginning in February

2013



Pictured: Suzanne Luck  
Executive Director (2014-Present)

RCCF hits \$10 million in assets as of Dec. 31

2020

# From 1997...

## "I didn't know what a community foundation was,"

John Wade said, "I was a businessman. So I started asking questions." John is referring to a meeting he was invited to attend in April 1997 to explore the possibility of forming a five-county community foundation.

"From this meeting to the end of May, I spent a lot of time talking to people and fact finding. I became somewhat knowledgeable."

Though the concept of a community foundation was new to John, Rob Morley believed in him. According to his wife Sue, Rob was involved with the Council of Michigan Foundations (CMF), the Higgins Lake Foundation, and the Morley Family Foundation. He saw the need for a community foundation in the area.

Rob was a friend of John's and encouraged him to lead the fundraising and establishment of a community foundation. He believed in John, supporting him as he accepted the role of founding chairman of North Central Michigan Community Foundation (NCMCF), established in June 1997. At the time of its establishment, NCMCF served Crawford, Iosco, Ogemaw, Oscoda, and Roscommon counties.

In the spring of 2001, John found himself at another meeting that would, once again, have a considerable impact on Roscommon County. This was one of the monthly meetings where the committee representing each county of NCMCF gathered.



JOHN & LIZ WADE



ROB & SUE MORLEY

"We went through the agenda, and we were about to close the meeting," John recalled. Then, a Roscommon County committee member stood up and said, "The eight of us decided that we want Roscommon County to be an independent foundation." Establishing a community foundation solely for Roscommon County would provide even more support to the organizations here.

In the fall of 2001, upon receiving 501(c)(3) status and the State of Michigan's charitable solicitation license, the Roscommon County Community Foundation was established with John Wade as chairman of the board of trustees.

Sue Morley said it wasn't long before contributions from generous donors started pouring in. "We had great support and they all believed in Roscommon County," she said, "We wanted it to be a good environment."

A sizeable list of donors that believed in Roscommon County included the Herbert H. and Grace A. Dow Foundation of Midland, who awarded a \$100,000 challenge grant to RCCF. This meant that the new Foundation had until Dec. 31, 2002 to raise up to \$100,000 to be matched dollar for dollar for the Independence Fund. The Independence Fund was initiated by the first RCCF Board of Trustees - which had expanded to 16 members - for the purpose of allowing RCCF to function.

Thanks to the generosity of the Wade and Morley families, and 113 individuals and foundations, RCCF raised the full \$100,000, receiving an additional \$100,000 from the Herbert H. and Grace A. Dow Foundation. In addition to the Independence Fund's establishment and the Dow Foundation's challenge grant, the Morley Family Foundation was instrumental in helping RCCF stand on its own.

Reflecting on the beginning of RCCF's story, Sue said, "John did a wonderful job. He was a good pick."

Here we are, 25 years later. From 24 endowment funds as part of NCMCF, the Roscommon County Community Foundation now houses nearly 100 funds, supporting and enriching the area we love.

... to 2022

THE FOUNDATION'S 25TH YEAR WAS CELEBRATED BY HANDING OUT FREE ICE CREAM AT THE ROSCOMMON ART FESTIVAL ON JULY 9, 2022



## Donor Story : Sue Shoemaker



*"The monies that are donated to the Foundation will be used in a reasonable and wise manner."*

- Sue Shoemaker  
Supporter of RCCF  
since 2013

A small excavating project at the Shoemaker's home in 2013 was the beginning of their annual giving to Roscommon County Community Foundation. Instead of presenting them with a bill for his services, the late Mark Scott of Scott's Excavating encouraged Sue and Rick Shoemaker to donate to a local nonprofit organization. He mentioned RCCF as an option. Sue said, "Rick and I did a little bit of looking into the Foundation and thought it was great ... and so generous of Mark and the company to do that."

The Shoemakers have now been giving regularly for about 10 years. They have several interests that they're passionate about directing their donations to - especially environmental and community needs. These interests stem from Rick's career with the DNR and Sue's work with the American Red Cross. "There is such a broad range of projects that RCCF supports," Sue cited as one of the reasons they support RCCF. The Shoemaker's history with RCCF began with an excavating project. Regardless of how somebody found the Foundation, how often or how much they give, each donor has had a part in changing Roscommon County.



HARRY & MARJORIE WALBRIDGE  
SCHOLARSHIP FUND

Married in 1977, Harry and Marjorie Walbridge were dedicated members of the Roscommon community. Harry was involved in the Masonic Lodge, The Roscommon Gerrish Higgins Lions Club, and the Rotary Club of Roscommon. He also served as the Gerrish Higgins School counselor from 1973 to 1987. Marge was an active member of the Zonta Club of Roscommon, and they were both devout members of the First Congregational Church.

The Walbridges felt that continuing one's education was very important, evidenced in part by their generous support of RCCF's scholarship program. RCCF wanted to recognize their generosity with the establishment of the Harry and Marjorie Walbridge Scholarship Fund. This fund is an open scholarship awarded to a graduating student from Roscommon Area Public Schools, Houghton Lake Community Schools, or Charlton Heston Academy, with plans to continue their education at an accredited college, university, community college or trade/technical/vocational school.

# [ New Funds ]

In 1997, the Roscommon County Community Foundation was established with a mission to create a stronger community for good - for everyone. As the community has evolved over 25 years, the needs within Roscommon County are constant and ever-changing. Hence, the board of trustees has established the Community Impact Fund in honor of our 25th Anniversary to satisfy the needs in our community - for ever and always.

This unrestricted fund will help support the dynamic needs of our community. Gifts made to this fund will help projects involving community development, health and human services, public safety and youth development.



COMMUNITY IMPACT FUND



SHARON A. HACKER NURSING  
SCHOLARSHIP FUND

Sharon Hacker, along with her husband Randy, spent time between Houghton Lake and Fenton. While Randy established and ran his own trucking company, Sharon worked in the propane industry for most of her life - she was also the editor for the Propane Journal. Sharon's real passion was to become a nurse, one she was unable to fulfill due to life's circumstances. Although Sharon couldn't fulfill her dream, she still cared for others and showed this by volunteering at Genesys Hospital, The Salvation Army, and The Mott Foundation. Sharon sadly lost her long battle with cancer in September of 2022.

To celebrate Sharon's life and her dream to become a nurse, Randy established the Sharon A. Hacker Nursing Scholarship Fund. His wish was to promote and encourage others, in Sharon's memory, to pursue their education and fulfill their potential. This scholarship may be awarded to a graduating high school student from Houghton Lake High School with plans to become a nurse.

# New Fund: Lynda's Food Pantry Fund



LYNDA HOGABOOM



CHRIS & KIM ASHCRAFT  
FUND INITIATORS

*"Lynda had been a community servant her entire life. She was the epitome of serving."*

- Kim Ashcraft

*"The fund is to give her recognition for her lifetime commitment to the community."*

- Chris Ashcraft



"LYNDA'S LEGACY" MEMORIAL PLAQUE

The Roscommon County Food Pantry (RCFP) started as Project H.O.P.E. in the 1980s, when a family in Prudenville lost their home. The community came together to provide them with food, clothing, and furniture. "They did what neighborhoods did. They had so much stuff left over and somebody said, 'Hey, we should make something out of this,'" Chris Ashcraft, current RCFP Executive Director, said.

Chris began at the Food Pantry in 2020 as treasurer, with Lynda Hogaboom serving as the Executive Director. Shortly thereafter, he transitioned into the Executive Director role when Lynda unexpectedly passed away. Lynda's passing was an immense loss to the community. As Kim Ashcraft - Chris's wife and RCFP treasurer and grant writer - reflected on Lynda's far-reaching impact, she remarked, "Lynda had been a community servant her entire life. She was the epitome of serving." Lynda had also been involved in the community as a Victim Services Unit advocate, and a minister and volunteer with the Salvation Army.

Lynda was a mentor to Chris and Kim, as well as their neighbor and beloved friend. They warmly recalled Lynda visiting their home several times a week to spend time with them, talking about all things Food Pantry and life in general.

Chris deeply admired Lynda's commitment to serving. "She did 100% more than anyone ever knew she did, and never asked to be recognized, and never glorified herself for what she did," Chris said. "Lynda was always doing something. She'd go to Walmart three nights a week to pick up banana boxes, and nobody knew about it."

RCFP currently serves several hundred households and individuals per month. "Lynda is the reason why we are at the pantry," Chris explained, "The fund [Lynda's Food Pantry Fund] is to give her recognition for her lifetime commitment to the community." Lynda's Food Pantry Fund provides support to RCFP in loving memory of Lynda and her selfless spirit of showing up for her community.

Besides contributing to Lynda's Food Pantry Fund, Chris and Kim listed four additional ways you can support the Roscommon County Food Pantry: Volunteering your time, donating food, donating hygiene items, and donating financially, which helps with operations. "There is nothing that you will bring in that we can't use or pass out," Chris added.

Chris and Kim are determined to carry on Lynda's legacy of providing support and food to our neighbors.

# [ Youth Advisory Council ]



SPRING GRANT MEETING

The Foundation's Youth Advisory Council (YAC) is comprised of high school students from Charlton Heston Academy, Houghton Lake Community Schools, Roscommon Area Public Schools, and Roscommon County homeschool students. YAC members meet throughout the school year to discuss and address issues that youth face daily. They review grant proposals and recommend funding that benefits community youth; as well as seek opportunities to engage and empower Roscommon County youth.

## MAKING CHANGE

ISSUES OF GREATEST CONCERN TO THE WELLBEING OF YOUTH AGES 13-18 IN ROSCOMMON COUNTY

Depression · Suicide  
Bullying/Cyberbullying  
Tobacco Use/Vaping  
Drug Use

*Data gathered from RCCF's 2021 Youth Needs Assessment Survey.*



NOVEMBER  
MENTAL HEALTH WORKSHOP

*"I joined YAC to serve my community and give back. My favorite part is the service projects we do, like the food pantry. YAC is a lot of fun."*

- Makayla McDaniel  
YAC member



MAKAYLA MCDANIEL AND SAVANNAH CICHOWSKI  
YAC MEMBERS

*"My favorite part about YAC is all of the resources that we learn about in the community that we might not have known about before. I love it, it's been a lot of fun and I've met a lot of new people."*

- Savannah Cichowski  
YAC member

*"Being in YAC was a great experience. I loved the service projects. As a YAC advisor I still like the service projects, but being able to help the kids and be a support for them is my favorite part. Seeing where the YACers started at the beginning of the year, and how they progressed - learning more about our community, and connecting with kids from other schools that have the same goals is just amazing."*

- Erica Luck, former YAC member and current YAC advisor



ROSCOMMON COUNTY FOOD PANTRY  
OCTOBER FOOD TRUCK

## GIVING BACK



KIDS HELPING KIDS: SHOPPING

*"YAC helps me help other people. You're helping, but you're also learning."*

- Maxine Cutter, YAC member

*"I see them developing into young adults with incredibly strong morals and values."*

- Tracy Bosworth, YAC advisor

# Ambassador Club



The Iles Schropp Group  
Platinum Sponsor



Platinum Sponsor



# #CommunityChoice

The #CommunityChoice Grant is a friendly competition between local 501(c)(3) nonprofits and exempt organizations that serve Roscommon County. In 2022, the community nominated their favorite nonprofit or tax-exempt organization to be awarded a grant for \$2,500.



Become an ambassador of change by supporting the community and gaining recognition for your company! Contact us at 989-275-3112 to learn more.

ARK used the #CommunityChoice grant to fulfill their mission: Rescue, rehabilitate and return injured and orphaned wildlife to their homes.

# Funds

## UNDESIGNATED FUNDS

Marilyn Brown Memorial Fund  
The Linda Chwan & Ken DePerro Memorial Fund  
The Cornerstone Fund  
Community Impact Fund  
The Erickson Family Fund  
Greatest Human Needs Fund  
Morley Family Foundation Fund  
Nester Family Charitable Fund  
Roscommon County General Fund  
St. Helen General Fund  
The Wade Family Donor Advised Fund

## EDUCATIONAL FUNDS

Gerrish-Higgins Educational Fund  
Houghton Lake Community School District Support Fund  
Houghton Lake Educational Foundation Fund  
Kirtland Community College Educational Fund  
Alexa Luck Memorial Fund  
Annie Williams Rackerby Fund  
Jim Mahoney Memorial - Music Program Support Fund  
Sarah Eulaine Tucker (Class of 1977) Fund

## YOUTH FUNDS

"Big Buck Open" Athletic Scholarship  
Howard B. "Corky" Gaylor Memorial Fund  
Kimberly Mires Athletic & Music Scholarship  
Roscommon Area Youth Booster Club Fund  
Roscommon County Kellogg Youth Fund  
Jim "Smitty" Smith Athletic Fund  
Larry Sumerix Memorial - Summer Music Scholarship  
Richard & Margaret Torongo Memorial Scholarship

## ENVIRONMENTAL FUNDS

Endowment for Higgins Lake  
Marguerite Gahagan Nature Preserve General Fund  
The John Morley Family Endowment for Higgins Lake  
Rogers Family Endowment for Houghton Lake  
Roscommon County Lakes & Rivers Fund  
Robert R. Thalner Fund

## HEALTH FUNDS

Jenni's Foundation - Michigan Cancer Support Fund  
Roscommon County Health Endowment Improvement Fund  
Roscommon County Tobacco Settlement Fund

## ANIMAL SUPPORT FUNDS

Ruby Cunningham Memorial Fund Supporting the  
Roscommon County Animal Shelter  
The Larry Eastley & Clare Fisher Eastley Animal Support Fund  
Viola J. Moore Animal Fund

## ORGANIZATIONAL FUNDS

Ambassador Club  
Habitat for Humanity General Fund  
Houghton Lake Public Library Excellence Fund  
Houghton Lake Rotary Club General Fund  
Lynda's Food Pantry Fund  
Northern Michigan Children's Assessment Center Fund  
RCCF Independence Fund  
Rob & Sue Morley Family Administrative Fund  
Tom & Jan Richardson Family Endowment for  
Roscommon Area Historical Society

## SPECIAL PROJECT FUNDS

Friends for Safe Schools Fund  
Roscommon County Health Services Fund  
Roscommon County Mental Health Services Fund  
Roscommon Area District Library Building Fund  
Roscommon Area District Library Community Outreach Fund  
The Ryan McDonald Memorial Fund  
Higgins Lake/Roscommon Non-Motorized Trail Way System Fund  
Thomas L. McNamara Memorial Rotary Parks Fund  
Urgent Needs Fund

## OTHER FUNDS

Doug Allen Fire & EMS Support Fund  
Zonta Club Women's & Children's Fund  
Roscommon County Recreation Fund  
Weede Family Community Recreation Fund

*"We're a part of the community. We feel it's important to partner with the community and give back. The Grace Bernardo, M.D. Memorial Health Careers Scholarship is a way to do that and encourage people to go into healthcare."*

- Jim Raschke, CEO of MidMichigan Community Health Services  
MidMichigan Health is an Ambassador Club member and fund initiator for the Grace Bernardo, M.D. Memorial Health Careers Scholarship, and the Roscommon County Health Services Fund

## SCHOLARSHIP FUNDS

Karen & Frank Arleth Memorial Scholarship  
Grace Bernardo, M.D. Memorial Health Careers Scholarship  
Lawrence C. Dashner Scholarship Fund  
Jack Danieleski Scholarship  
Kelly Dunmire Memorial Scholarship  
Fidelity Chapter #50 Order of the Eastern Star Scholarship  
Ruth & Ralph Fisher Scholarship  
Evelyn Fraser Scholarship  
Ava Raye Gasper Scholarship Fund  
Gerrish-Higgins Roscommon Alumni Association Scholarship  
The Rex & Arlene Gillen Scholarship  
Char Goddard Memorial Scholarship  
Forest & Rita Hacker Family Sportsmanship Scholarship  
Sharon A. Hacker Nursing Scholarship Fund  
Robert A. Hess Memorial Scholarship  
HLHS Class of 1983 Memorial Scholarship Fund  
Houghton Lake Rotary Club Memorial Scholarship  
Houghton Lake Sports Booster Scholarship Fund  
Mike M. & Patricia M. Ignat Scholarship  
The Mr. J's Buckeye Nuts College Scholarship  
Robert J. Kunik Memorial Scholarship  
Layton International Scholarship  
Bobbe Morley Scholarship Fund  
Donald W. & Beverly Nester Memorial Scholarship  
Ralph Ostling Memorial Scholarship  
Patriot Scholarship Fund  
Roscommon Rotary Club General Fund  
Roscommon Soccer Teams Scholarship  
Andrew Schmidt Trades Scholarship  
W.H. & Betty J. Scott Memorial Scholarship  
Clyde F. Shaltz Memorial Scholarship  
Ford & Marguerite Silsby Scholarship  
Stuernal & McLaren Funeral Home Scholarship  
Michael R. Tremi Memorial Athletic Scholarship  
Harry & Marjorie Walbridge Scholarship Fund  
William C. Williams (Class of 1950) Memorial Scholarship



BILL COLLIN, CFO AND JIM RASCHKE, CEO  
MIDMICHIGAN COMMUNITY HEALTH SERVICES

# [ Establish a Fund ]

Creating a fund is an opportunity to leave a legacy, carving out a place in your community's history for yourself or for the person who inspired the fund.

Your named fund is a lasting tribute to honor or memorialize an individual of your choice and can be donated to at any time, by anyone.

The fund's name will live on in perpetuity, supporting the namesake's charitable interests and the Foundation's mission.

At no cost or obligation, Foundation staff will meet with you and/or your professional advisor to explore your charitable and financial goals.



SCOTT LAYTON & FAMILY IN GREECE

*"At Michigan State, I did four study abroad programs and it opened my eyes to the tremendous cultures the world has to offer. Since then, it's been part of my life goals for myself and my family to live outside of the US. Going overseas and leaving a small town physically behind while still carrying the sensibilities I learned from it has created many opportunities for learning and success for my family. The reason we started this scholarship was to give other people from the same small town the chance to see the rest of the world out there and to create and allow them to pursue their dreams and ambitions. Awarding the scholarship and making a difference is one of the highlights of my year."*

- Scott Layton  
Roscommon High School graduate  
Fund initiator for Layton International Scholarship

# [ Leave a Legacy ]

Anybody can leave a future gift that lasts forever without impacting current finances. Here's how.

- 1** Make a gift of cash, stocks, bonds or other assets to RCCF. This charitable gift qualifies for tax advantage under federal law.
- 2** Designate a part of your estate and, in some cases, receive a substantial reduction in federal gift and estate taxes.
- 3** Name RCCF as the beneficiary of all or part of your IRA or life insurance policy. The entire gift is transferred tax-free at your death and your estate receives an estate tax charitable deduction.
- 4** Make a gift of cash or property to RCCF now, get immediate tax benefits, and ensure that you or a loved one receive fixed quarterly or annual income payments for life.

*Our Legacy Society honors community-minded individuals and couples who are dedicated to making a long-term investment in our region by ensuring their gifts are sustainable and future generations will benefit from their legacy of giving.*

# Grants Awarded



GAHAGAN NATURE PRESERVE  
SNOWSHOES



RAPS PANTRY



FRIENDS OF TRESTLE PARK  
FREE SUMMER CONCERT SERIES

**Alexa Luck Memorial Fund**  
*Roscommon Area Public Schools*  
\$1,000.00 - Quiz Bowl National Competition Trip

**Annie Williams Rackerby Fund**  
*COOR ISD*  
\$1,400.00 - Talking is Teaching Little Libraries  
\$2,091.33 - Communications  
*Charlton Heston Academy*  
\$2,500.00 - Kindergarten Classroom Wish List

**Endowment for Higgins Lake**  
*Higgins Lake Foundation*  
\$5,000.00 - DASH Boat

**Family Donor Advised Fund**  
*Camp Westminster on Higgins Lake*  
\$7,500.00 - Roscommon County Public Schools Summer Day Camp  
*Marguerite Gahagan Nature Preserve, Inc.*  
\$10,000.00 - Purchasing MDNR Property  
*Roscommon Area Public Schools*  
\$1,000.00 - RHS Theatre Program

**Gerrish-Higgins Education Fund**  
*Roscommon Area Public Schools*  
\$3,000.00 - Art Club  
\$500.00 - RHS Pantry

**Greatest Human Needs Fund**  
*Good Shepherd UMC of the North*  
\$3,000.00 - Free Community Dinners

**Houghton Lake Community School District Support Fund**  
*Houghton Lake Community Schools*  
\$2,500.00 - Molly Kennedy Guest Presentation  
\$1,094.96 - Interactive Digital Classroom

**Houghton Lake Education Fund**  
*Houghton Lake Community Schools*  
\$5,470.00 - Tigers Game Field Trip

**Howard B. "Corky" Gaylor Memorial Fund**  
*Northeast Michigan Community Service Agency*  
\$503.00 - Kinship Bowling Party

**Jim Mahoney Memorial - Music Program Support Fund**  
*Roscommon Area Public Schools*  
\$600.00 - Wicked Field Trip

**John Morley Family Endowment for Higgins Lake**  
*Higgins Lake Foundation*  
\$2,500.00 - Monitoring of Various Environmental Parameters

**Marilyn Brown Memorial Fund**  
*Good Shepherd UMC of the North*  
\$1,200.00 - Roscommon Food Truck Distributions

**Morley Foundation Fund**  
*Northern Michigan Children's Assessment Center*  
\$5,000.00 - Training for Staff  
*Roscommon County Literacy Council*  
\$2,500.00 - Dolly Parton Imagination Library

**Robert R. Thalner Endowment Fund**  
*Gerrish Township*  
\$4,700.00 - Carlos Park Enhanced Parking

**Roscommon County General Fund**  
*COOR ISD*  
\$1,454.00 - Rifton Support Station  
*Crawford-Roscommon Conservation District*  
\$2,575.00 - Water Hookup  
*Roscommon Area Historical Society*  
\$1,000.00 - Fencing Replacement  
*Roscommon County Food Pantry*  
\$3,600.00 - Delivering Food & Hope to Our Neighbors  
\$6,000.00 - Personal Care & Food for Our Neighbors  
*Roscommon-Crawford Foster Closet*  
\$3,079.30 - Clothing Storage & Organization  
*St. Vincent dePaul Prudenville*  
\$2,500.00 - Diaper Bank & Food Pantry  
\$4,000.00 - Helping Neighbors in Need

**Roscommon County Health Improvement Endowment Fund**  
*COOR ISD*  
\$2,400.00 - Rifton Support Station  
*Crawford Roscommon Child Protection Council*  
\$2,700.00 - Strengthening Fatherhood  
*Roscommon County Commission on Aging, Inc.*  
\$1,575.00 - Meals on Wheels Support Equipment

**Roscommon County Kellogg Youth Fund**  
*COOR ISD*  
\$1,400.00 - Talking is Teaching Little Libraries  
\$2,430.00 - Bookworms Trade Books  
*Friends of Trestle Park*  
\$2,500.00 - 2022 Free Summer Concert Series  
*Marguerite Gahagan Nature Preserve, Inc.*  
\$995.00 - Expanded Winter Program Opportunities  
*Northeast Michigan Community Service Agency*  
\$1,400.00 - Kinship Bowling Party  
*Roscommon Area Public Schools*  
\$1,000.00 - RHS Pantry

**Roscommon County Tobacco Settlement Endowment Fund**  
*COOR ISD*  
\$450.00 - Rifton Support Station  
*Roscommon County Commission on Aging, Inc.*  
\$1,000.00 - Meals on Wheels Support Equipment

**Sarah Eulaine Tucker (Class of 1977) Fund**  
*Roscommon Area Public Schools*  
\$1,000.00 - Wicked Field Trip

**Urgent Needs Fund**  
*Charlton Heston Academy*  
\$900.00 - Hygiene Closet  
*St. Vincent dePaul Prudenville*  
\$4,000.00 - Client Services Fund  
*We Care Shop*  
\$900.00 - Funding for Food Pantry  
\$1,800.00 - Overhead Costs

**Wade Family Donor Advised Fund**  
*COOR ISD*  
\$2,000.00 - Communications  
\$2,000.00 - Bookworms Trade Books  
*Kirtland's Warbler Festival, Inc.*  
\$500.00 - 2022 Kirtland's Warbler Weekend  
*Markey Township*  
\$1,200.00 - Outdoor Butterfly & Hummingbird Garden  
*Roscommon Area Historical Society*  
\$500.00 - Fencing Replacement

# ANNUAL DISBURSEMENTS

## Houghton Lake Public Library Excellence Fund

\$1,060.00 - Houghton Lake Public Library

## Kirtland Community College Educational Fund

\$2,060.00 - Kirtland Community College Foundation

## Larry Eastley & Clare Fisher Eastley

### Animal Support Fund

\$1,569.00 - ARK Association to Rescue Kritters

\$1,569.00 - Roscommon County Animal Shelter

## Marguerite Gahagan Nature Preserve General Fund

\$1,726.00 - Marguerite Gahagan Nature Preserve, Inc.

## Roscommon Area Youth Booster Club Fund

\$3,278.00 - Roscommon Area Youth Booster Club

## Rubye Cunningham Memorial Fund Supporting the Roscommon County Animal Shelter

\$949.00 - Roscommon County Animal Shelter

## Tom & Jan Richardson Family Endowment for Roscommon Area Historical Society

\$525.00 - Roscommon Area Historical Society

## Viola J. Moore Animal Fund

\$153.00 - ARK Association to Rescue Kritters

\$153.00 - Missaukee Humane Society

\$153.00 - Roscommon County Animal Shelter



MUNSON GRAYLING HOSPITAL  
HIGH RES SURGICAL MONITORS

In 2021, Munson Grayling Hospital received a \$5,000 grant provided by the Nester Family Charitable Fund for 4K high-definition surgical monitors. 4K HD surgical monitors allow surgeons to clearly view live feed video during minimally invasive surgeries, resulting in improved depth perception and detailed, accurate images of patient anatomy. After over a year of worldwide supply chain delays, Munson Grayling Hospital has now received 4K HD surgical monitors.

# GRANT FAQ

## WHEN TO APPLY

A competitive grant cycle takes place every spring and fall. Applications for an Urgent Needs grant are accepted any time of the year.

## HOW TO APPLY

Grant guidelines and applications can be accessed by going to [www.myrccf.org/grants](http://www.myrccf.org/grants). If you have questions, require additional information, or would like assistance in completing your grant application, please contact RCCF staff.

## WHO CAN APPLY

501(c)(3) nonprofit organizations, educational institutions (preschool through college), and all units of government serving Roscommon County residents.

## WHAT WE FUND

Arts and culture, education, environment and land use initiatives, community and economic development, civic improvement, human services, health and wellness projects, recreation, and youth projects.

## WHAT WE USUALLY DON'T FUND

Ongoing organizational operating expenses, political campaigns, sectarian projects, loan payments or deficit spending, those services normally supported by tax dollars, annual fundraisers, or grants to individuals.



NMCAC  
OUTREACH MATERIALS

Northern Michigan Children's Assessment Center (NMCAC) exists to reduce the trauma of child abuse and neglect through specialized services to children and their families. Staff includes a team of therapists, forensic interviewers, forensic nurse examiners, and family advocates. Staff members are continually trained to provide trauma-informed care in NMCAC's child-friendly environment.

Training and outreach materials aren't free though, which is where community support comes in. Founder and Executive Director Rebecca Yuncker said, "RCCF helps to support a lot of our professional training and many of the outreach efforts that we do. Without specialized training, staff will not have the skills to make a difference." She added, "Many other community members and supporters of NMCAC's mission also contribute to our efforts. It's so nice to have these partnerships in the community so we can continue to ... provide direct services to our most vulnerable children. We wouldn't be able to do these things without the community's support."

# Scholarships Awarded

## Andrew Schmidt Trades Scholarship

*Alex Goodall*

## Ava Raye Gasper Scholarship

*Jorden Bangert · Brian Morgan*

## Bobbe Morley Memorial Scholarship

*Benjamin Mayes*

## Char Goddard Memorial Scholarship

*Benjamin Mayes*

## Donald W. & Beverly Nester Memorial Scholarship

*Isabella Cortes*

## Evelyn Fraser Scholarship

*Ashley Chmielewski*

## Fidelity Chapter #50, Order of the Eastern Star Scholarship

*Skylar Milnes*

## Ford and Marguerite Silsby Scholarship

*Meredith Kilbourn*

## Forest & Rita Hacker Family Sportsmanship Scholarship

*Lauren Hood · William Oster*

## Gerrish-Higgins Roscommon Alumni Association Scholarship

*Alex Goodall · Meredith Kilbourn · Alisha Pratt  
Erika Terry*



## Grace Bernardo, M.D. Memorial Health Careers Scholarship

*Ashley Chmielewski · Brian Morgan*

## Houghton Lake Rotary Club Memorial Scholarship

*Jorden Bangert · William Oster · Hannah Peel*

## Houghton Lake Sports Booster Scholarship

*Brian Morgan*

## Jack Danieleski Scholarship

*Avery Smitz*

## Karen & Frank Arleth Memorial Scholarship

*Joshua Fairbanks*

## Kelly Dunmire Memorial Scholarship

*Julia Jaskowski*

## Lawrence C. Dashner Scholarship

*Jorden Bangert · Ashley Chmielewski · Julia Jaskowski  
Brian Morgan · Emily Sinischo · Avery Smitz · MyKayla Warren*

## Layton International Scholarship

*Allison Chmielewski · Ashley Chmielewski*

## Michael R. TremI Memorial Athletic Scholarship

*Allison Chmielewski*

## Mike M. & Patricia M. Ignat Scholarship

*Brian Morgan*

## Mr. J's Buckeye Nuts College Scholarship

*Logan Roth*

## Patriot Scholarship

*Emily Sinischo · Heaven Wiles*

## Ralph Ostling Memorial Scholarship

*Isabella Cortes · Madison McPherson · Alisha Pratt  
Avery Smitz*

## Rex & Arlene Gillen Scholarship

*Jorden Bangert · Jevyn Emerick · William Oster*

## Roscommon Rotary Club General Fund

*Allison Chmielewski · Ashley Chmielewski · Joel Ewald  
Julia Jaskowski · Benjamin Mayes · Alisha Pratt*

## Roscommon Soccer Teams Scholarship

*Alex Goodall · Joshua Jacobs · Madison McPherson*

## Ruth & Ralph Fisher Scholarship

*Brian Morgan · Avery Smitz*

## Stuernol & McLaren Funeral Homes Scholarship Fund

*Isabella Cortes*

## W.H. & Betty J. Scott Memorial Scholarship

*Alex Goodall*

## William C. Williams (Class of 1950) Scholarship

*Julia Jaskowski*



## SUMMER ENRICHMENT SCHOLARSHIPS

### "Big Buck Open" Athletic Scholarship

*Owen Barnes*

### Jim "Smitty" Smith Athletic Fund Scholarship

*Owen Barnes*

### Kimberly L. Mires Athletic & Music Scholarship

*Addison Barber*

### Larry Sumerix Memorial Summer Music Scholarship

*Owen Ostling*

### Richard & Margaret Torongo Memorial Scholarship

*Addison Barber*

# [ Financials ]

## 2022 AT-A-GLANCE

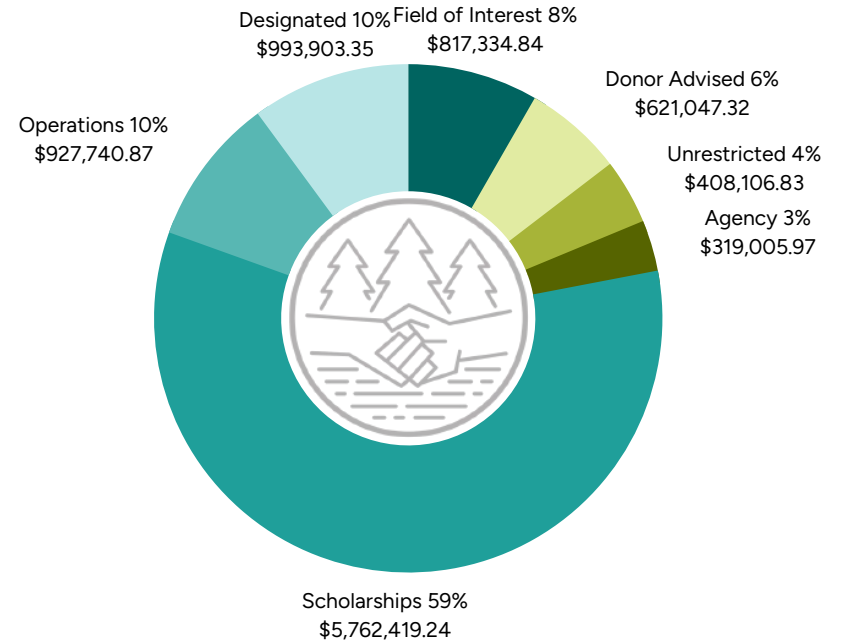
**\$214,063**

GIVEN BACK TO THE COMMUNITY THROUGH GRANTS

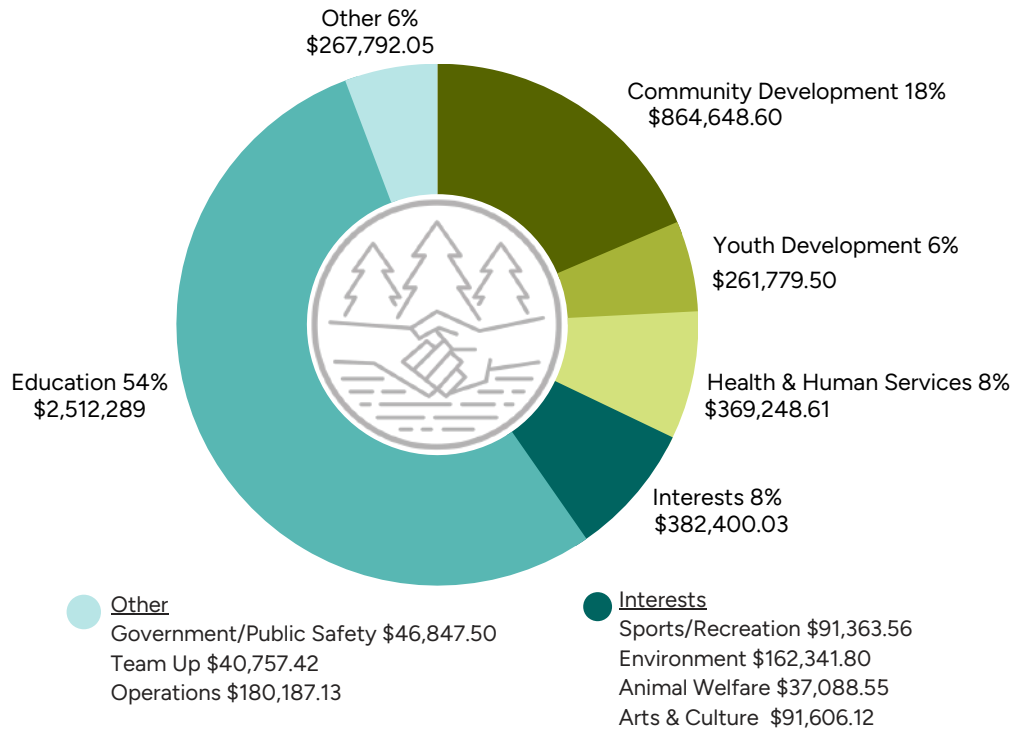
**\$156,320**

INVESTED IN STUDENTS THROUGH SCHOLARSHIPS

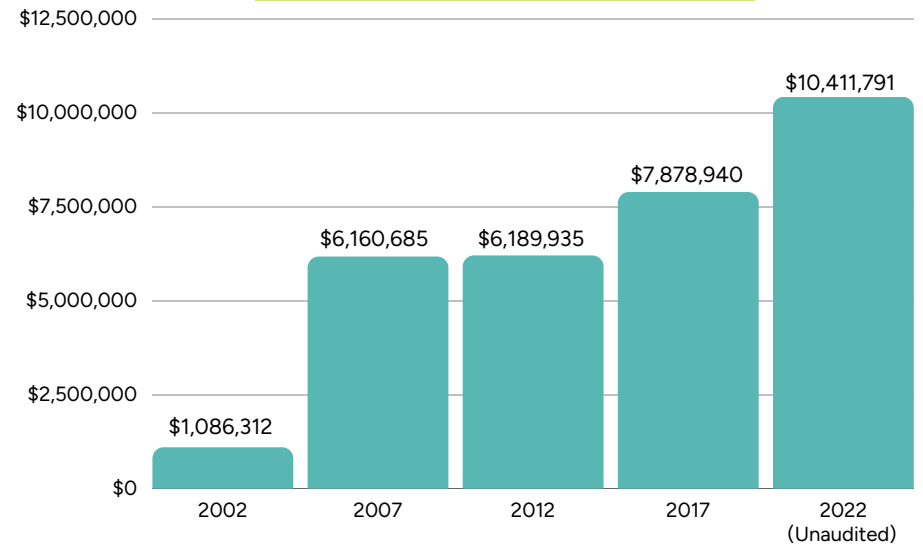
## \$9,849,558.42 IN DONATIONS 2002-2022



## \$4,658,157.79 IN GRANTS AWARDED 2002-2022



## TOTAL ASSETS 2002-2022



# Our Donors

Your generosity changes the community

AmazonSmile Foundation  
Jean P. Abraham  
Gary and Sandra Akin  
All Shores Heating & Air Conditioning, Inc.  
Tom & Connie Allen  
Marcie Allgeyer  
James & Kaylynn Anderson  
John Anderson  
Claudia Anderson  
David & Delores Archer  
Art-Y-Facts  
Chris & Kim Ashcraft  
Pete & Georgia Aldrich  
Larry Averill  
Lebeth Baetens  
Robert Barke  
Christin Bates  
Benevity Causes  
Old Point Comfort Marine  
Carol Morley Beck  
Robert & Caroline Berard  
Greg Bergin  
Better Yards Landscaping, Inc.  
John & Bonnie Biggar  
Scott & Sharon Bishop  
Ken Bittner Agency  
Douglas Black  
Theresa Blamer  
Greg & Linda Bodker  
RJ & Ann Bolzman  
Terry Bone  
Michael & Lori Van Den Boom  
Bary & Joan Boothe  
Tracy & Mark Bosworth  
Boeing Company - Gift Match Program  
Sharon Boushelle  
Guy & Cheryl Bowman  
James Bradley  
Nancy Bresette  
John & Katherine Brodie  
Bruno's Barbershop and Hairstyling  
Buccilli's Pizza  
Mike & Vicki Burnside  
Jeri Lynn Cabbage  
Al, Pat & Doug Cambridge

Scott & Ann Caron  
Glenn & Irene Catrell  
Larry & Joanne Cavanagh  
Fred & Carol Chidester  
Linda & Joseph Ciarkowski  
Jon & Caryn Cleland  
Lisa Clark  
Donald & Suzanne Cleveland  
Cliff's Sand & Gravel, Inc.  
Consumers Energy Foundation  
The Cobb Community Foundation  
Tom & Rachel Cochran  
Adeline Cochran  
Frank Cochran & Stephanie Fitzgerald  
Cornerstone Construction Corp.  
Connie & Lee Coughlin  
John Cova  
Hal & Jean Flynn  
Cummings Property Management  
Judy Cunningham  
Bill & Anne Curnalia  
Tom & Phyllis Dale  
Joanne Danieleski  
Claire Danieleski & Mike Dubanski  
Lawrence C. Dashner Living Trust  
Julie & Bill Dennison  
Kevin & Kendra Delinger  
Mary Kay Dent  
Valerie Descamps  
Melanie Domrase  
Judy Dreaver  
DST Systems Inc. - Matching Gifts Program  
Ken Dubay  
William Dunkley  
Kathryn Durham  
Wendy Durocher  
Dale & Theresa Ekdorm  
Benjamin Elliott  
Brenda Ensing  
Mary Erickson  
Escalent, Inc.  
Annette & Robert Eshleman  
Edward Essenburg  
Peter & Carolyn Facione  
Jane Ferguson  
Fidelity Charitable  
Edward & Caryl Fischer

James Fisher  
Rhonda Fossitt  
Jim & Lana French  
Silas & Cassandra Freeman  
Roberta Friday  
Tamara Frisbie  
Robert & Lynne Frye  
Gary & Tami Jo Gandolfi  
Jim & Carol Garlo  
Garrett's Pressure Crack  
Keith & Jo Ann Gave  
Amy & Richard Berthiaume  
Emily Gobright  
Mary Green  
Rick & Mary Hacker  
Ronald Hacker Family  
Randy Hacker  
Sandra Haldy  
Ronald & Kathleen Hall  
Tom & Kathryn Hamp  
Harms Enterprises Inc.  
Bill Hart  
Sharon Hartman  
Greg & Laura Hause  
Suzanne Hecht  
Hess Law Office, P.C.  
Higgins Lake Property Owner's Association  
Mary Highberger  
Tom & Molly Hillman  
HLHOMEHUNTER INC  
Jane Hoey  
Andrea Holt  
Dave & Peggy Howard  
Jacqueline Howell  
Industrial Propane Service, Inc.  
Craig & Frances Jacobs  
Thomas Jaenicke  
Jamie Janisse  
Krisanne & Jeff Jastrzab  
J D O, Trust  
Thomas & Mary Lou Jenette  
Kathleen Jernigan  
Jimmys Collision Repair Center  
Jerry & Joyce Johnston  
William Jones  
Robert & Jacklean Jones  
Robert & Catherine Kasulke  
Leslie & Sherron Kempfer  
Rev. Dr. & Mrs. James N. Kent  
Russell & Anne Kidd  
Ron Kiel  
Joe Kirschner  
Dawn & Brian Kittle  
Richard & Cathryn Koupal  
Frederick & Virginia Krauss  
Francis & Judith Kronner  
Kube Propane LLC  
Kristine Kurnit

Tom & Sara LaCroix  
Gordon & Eileen LaFontaine  
Debra Lauermann  
Duncan & Kathy Lawrence  
Scott Layton  
Lewis Brothers Collision, Inc.  
Joanne Lederman  
Gerald & Dyna Lehman  
Liberty Propane  
Mr. & Mrs. Joseph C. Liddicoat  
Loney Chiropractic, PC  
Susan Longendyke  
David Lowe  
Robert & Sara Luck  
David & Suzanne Luck  
M55 Pour House  
Marilou MacKenzie  
Merry & Jim Maiani  
Joyce Maidens  
Heather Marra  
David & Diana Mattlin  
Carol Mauro  
Mary Jo Mayes  
Judy McDonald  
Dennis & JoAnn McDonald  
Dale & Libbie McDonald  
Alice McGregor  
Lea-Ann McGregor  
Dan & Anna McGrew  
Anne & Rick Meeks  
Merrill Lynch - The Iles Schropp Group  
Mr. & Mrs. Edward & Eileen Metzler  
Mary Jane Mezaros  
Middleton's Home Inspection LLC  
MidMichigan Community Health Services  
Sam & Tammy Migliore  
Ron & Carolyn Miller  
David Smith & Carolyn Miller  
Dennis & Marilyn Miller  
Gay Millon  
Chris & Mireille Mills  
Ray & Phyllis Mills  
Chuck & Linda Mires  
Cheryl Mitchell  
Bruce Montroy  
Don & Allison Montroy  
Morgan Stanley Gift Fund  
Thomas & Patricia Moreau  
Tom Morley  
Peter Morley  
Chere Morrison  
Mary Munn  
Robert & Sue Murphy  
MyMichigan Health  
National Association of Wastewater Technicians  
Don Nester Auto Group  
Judith Nestor

Network for Good  
Fredrick & Diane Nielsen  
Shelby Norman  
Northern Flooring and Design Center  
North Central Area Credit Union  
Northern Exposures Landscaping LLC  
Lauren Ostling & Ben Pensak  
Thela Ostling  
Pamela Ostling  
Dr. Robert Pacella & Dr. Rhonda Lamberg  
Nick & Mary Beth Panchula  
Ron & Mindy Parrott  
The Pet Parlor  
Lindy Peterson  
Roy & Susan Peterson  
Sally Pettinger  
Duane & Jane Pinkelman  
John & Lisbeth Polasek  
Lee & Terri Prindle  
R & R Auto Care, LLC  
Thomas Rackerby  
Steven & Diane Randall  
Raymond James Charitable Endowment Fund  
David & Fran Reece  
Kenneth & Linda Reichard  
Don & Michelle Ressa  
Gordon H. & Anne J. Richardson  
Tom Richardson  
Rieth-Riley Construction Co., Inc.  
Carolyn Riley  
Patricia Riss  
Donna Ritter  
Roscommon Area Youth Booster Club  
Mark Rodak  
Edwin & Nancy Rons  
Perry & Kathleen Root  
Roscommon Auto Recyclers, Inc.  
Roscommon Rotary Club #2814  
Rotary Club of Houghton Lake  
Randall & Jean Rupp  
George Sanfacon  
Frances Sartori  
John & Cheryl Schaeffer  
Scott & Jacquelynne Schropp  
Bryan Schall  
Cheryl Schall  
Schroeder Foundation  
Wesley Schropp  
Howard & Tamara Schultz  
Albert & Audrey Schultz  
Tammy Schwalm  
Ronald & Margaret Senak  
Thomas & Anita Sheppard  
Richard & Sue Shoemaker  
Signature Truck Systems, Inc.  
Gail Silverthorn  
Dawn Sloan

Anne Sloan  
Jennifer Smejkal  
James & Kathleen Smith  
Tamara Sonnenberg  
Mary Sottrel  
Barbara Souder  
Janet Spadora  
Robert and Louise Spicer  
Patrick & Vicki Springstead  
SS&C Technologies - Matching Gift Program  
Jeannie Staley  
Dar Stead-Smith  
Paul & Vicki Steffen  
Jeff Silagy Sundew Environmental Super 8  
Dan & Lisa Sutton  
Swinehart LLC  
Denise Sylvester  
Anna & Don Sylvester  
Tee Box Indoor Golf  
Thatcher's Concrete & Stone Creations  
Thomas & Brittany Thatcher  
John & Roxanne Thompson  
Elizabeth Thompson  
Nancy Thompson  
Carolyn Thornton  
Three Oh Eight of Manton LLC  
Joseph & Cynthia Torrence  
William Torongo  
Ira Toy III  
Travel Information Systems, Inc.  
Cindy Tremi  
Craig & Susan Tyer  
UK Online Giving Foundation  
Rita Van Scyoc  
Barbara Van Tol  
Jim VanSice  
Mr. & Mrs. John W. Wade  
Jeff & Kay Wagner  
Mike & Kathy Wahl  
The Walbridge Trust  
Gerald Wall  
Roberta Waterman  
Robert Watkins  
Blake & Marian Wattenbarger  
Laura Watters  
Karen Weirauch  
Mr. & Mrs. Charles D. Weller  
Jeromy Werra  
John & Deborah White II  
Philip & Karen Will  
Wilson's Automotive  
Ron & Wendy Wiltse  
The Wintrode Family Foundation  
Katie Woida  
Marie Woodrich  
Thomas & Joyce Zeneberg  
The Zonta Club

# Tributes

*In memory of Alexa Luck*  
 Mary Kay Dent  
 David & Suzanne Luck  
 Tammy Schwalm  
 Roberta Waterman  
*In memory of Allan Methven*  
 Rick & Mary Hacker  
*In memory of Angela Norton*  
 Claire Danieleski & Mike Dubanski  
*In memory of Annie Rackerby*  
 Thomas Rackerby  
*In memory of Anthony Michalak*  
 Claire Danieleski & Mike Dubanski  
*In memory of Ava Raye Gasper*  
 Scott & Ann Caron  
 Hart Ford Lincoln  
 Cornerstone Construction Corp.  
 Lewis Borthers Collision, Inc.  
 Middleton's Home Inspection LLC  
 Northern Flooring and Design Center  
 Better Yards Landscaping, Inc.  
 Don Nester Auto Group  
 Jeremy Werra  
 Loney Chiropractic, PC  
 Mary Green  
 Andrea Holt  
 John Cova  
 Dawn & Brian Kittle  
 Northern Exposures Landscaping LLC  
 R & R Auto Care LLC  
 Edward Essenburg  
 Ken Bittner Agency  
 Bruno's Barbershop & Hairstyling  
 Three Oh Eight of Manton LLC  
 The Pet Parlor  
 HLHOMEHUNTER INC  
 Jimmy's Collision Repair Center  
 Tee Box Indoor Golf  
 Super 8  
 M55 Pour House  
 Wilson's Automotive  
 Garrett's Pressure Crack  
 Harms Enterprises, Inc.  
 Cliff's Sand & Gravel, Inc.  
 Rieth-Riley Construction Co., Inc.  
*In memory of Barb Schaeffer*  
 John & Cheryl Schaeffer  
*In memory of Betty Hall*  
 Tom & Kathryn Hamp  
*In memory of Betty White*  
 Roberta Friday  
*In memory of Beverly & Don Nester*  
 Edward & Eileen Metzler  
 Bryan Schall  
*In memory of Beverly Nester*  
 The Wintrode Family Foundation  
*In memory of Bob & Barb DeWitt*  
 Laura Watters  
*In memory of Bobbe Morley*  
 Schroeder Foundation  
*In memory of Bobby Ranusch*  
 Claire Danieleski & Mike Dubanski  
 Joanne Danieleski

*In memory of Carole Ostling*  
 John & Bonnie Biggar  
 Dave & Peggy Howard  
 Dale & Libbie McDonald  
 Thela Ostling  
*In memory of Char Goddard*  
 John & Cheryl Schaeffer  
 Tammy Schwalm  
 Dar Stead-Smith  
*In memory of Chris Salem*  
 RJ & Ann Bolzman  
*In memory of Constance Bone*  
 The Danieleski Family  
*In memory of Cynthia Pietchak*  
 Melanie Domrase  
*In memory of Dagne Ogren*  
 Thela Ostling  
*In memory of David Ford*  
 Thomas & Brittany Thatcher  
*In memory of Deb Gilchrist*  
 Jim & Carol Garlo  
*In memory of Dennis Peterson*  
 Lindy Peterson  
*In memory of Dobie & Eileen Munn*  
 Mary Munn  
*In memory of Don & Barb Dombrowski*  
 Fredrick & Diane Nielsen  
*In memory of Donald & Marie Stoll*  
 Thomas & Anita Sheppard  
*In memory of Donald S. Jernigan*  
 Kathleen Jernigan  
*In memory of Douglas Allen*  
 Tom & Connie Allen  
*In memory of Edna Close*  
 Anna & Don Sylvester  
 Christin Bates  
*In memory of Floyd Dubanski*  
 The Danieleski Family  
*In memory of Forest & Rita Hacker*  
 John & Roxanne Thompson  
*In memory of Gary Boushelle*  
 Sharon Boushelle  
*In memory of Gary Silverthorn*  
 Gail Silverthorn  
*In memory of Gerald McCormick*  
 Charles M. Engel, VFW Post #4159  
*In memory of Harry & Carolyn Taylor*  
 Craig & Sharon Taylor  
*In memory of Harry & Marjorie Walbridge*  
 The Walbridge Trust  
*In memory of Heather Bauknecht-Taylor*  
 Brenda Ensing  
*In memory of Helen Hall*  
 Tom & Kathryn Hamp  
*In memory of HLHS Class of 1983 members who have passed on*  
 Gary & Tami Jo Gandolfi  
*In memory of Howard Hall*  
 Tom & Kathryn Hamp  
*In memory of Jack Moon*  
 Tom & Kathryn Hamp  
*In memory of James Mason*  
 Dan & Lisa Sutton

*In memory of Jan Richardson*  
 Donna Ritter  
 Tom Richardson  
*In memory of Jerry Lehman*  
 Dyna Lehman  
*In memory of Jim & Edna Close*  
 Denise Sylvester  
 John Anderson  
 Anne & Rick Meeks  
*In memory of John Pilkiewicz*  
 Anna & Don Sylvester  
*In memory of Judi Casler*  
 James & Kathleen Smith  
*In memory of Kelly Dunmire*  
 Ray & Phyllis Mills  
*In memory of Kimberly Mires*  
 Chuck & Linda Mires  
*In memory of Kurt Ostling*  
 Thela Ostling  
*In memory of Larry Bennett*  
 Duncan & Kathy Lawrence  
*In memory of Larry Sumerix*  
 Jan & David Black  
*In memory of Leo Valko*  
 James & Kathleen Smith  
 Thomas & Mary Lou Jenette  
 Krisanne & Jeff Jastrzab  
*In memory of Lynda Hogaboom*  
 Chris & Kim Ashcraft  
 Keith & Jo Ann Gave  
*In memory of Mackenzie Violet Bishop*  
 Thomas & Patricia Moreau  
*In memory of Mark Robert Truman*  
 Duncan & Kathy Lawrence  
*In memory of Mark Scott*  
 Tamara Frisbie  
 National Association of  
 Wastewater Technicians  
 Duane & Jane Pinkelman  
 Linda & Joseph Ciarkowski  
 Robert & Jacklean Jones  
 Mary Sottrel  
 Jennifer Smejkal  
*In memory of Martha Eckhardt*  
 Jim & Carol Garlo  
*In memory of Mary Jo Alguire Correll*  
 Anne & Rick Meeks  
 Elizabeth Thompson  
*In memory of Mary Walker*  
 James & Kathleen Smith  
 Laura Watters  
*In memory of Michael C. Soderman*  
 The Hacker Family  
*In memory of Michael Wiltse*  
 Ron & Wendy Wiltse  
*In memory of Mr. Thomas Hebert*  
 Tom & Kathryn Hamp  
*In memory of Pat Fenton*  
 John & Bonnie Biggar  
 John & Cheryl Schaeffer  
*In memory of Pat Marra*  
 Al, Pat & Doug Cambridge

*In memory of Patrick J. Mattingly, Sr.*  
 Duncan & Kathy Lawrence  
 Greg & Laura Hause  
 Larry & Joanne Cavanagh  
 Larry & Carolyn Thornton  
 Jeri Lynn Cabbage  
 Thomas & Mary Lou Jenette  
*In memory of Patti Hamp*  
 Robert & Catherine Kasulke  
*In memory of Ralph Ostling*  
 Lauren Ostling & Ben Pensak  
 Thela Ostling  
*In memory of Ralph, Jean, and David Quist*  
 Tom & Kathryn Hamp  
*In memory of Richard & Margaret Torongo*  
 Jon & Caryn Cleland  
*In memory of Richard Johoske*  
 Mark Rodak  
*In memory of Robert Borak*  
 Duncan & Kathy Lawrence  
*In memory of Robert Gandolfi*  
 Gary & Tami Jo Gandolfi  
*In memory of Robert Morley*  
 Tom & Sara M. LaCroix  
*In memory of Ron Baerlocher*  
 Jeri Lynn Cabbage  
 Kenneth & Linda Reichard  
 Jerry & Joyce Johnston  
 Glenn & Irene Catrell  
 Joseph & Cynthia Torrence  
 Annette & Robert Eshleman  
 Peter & Carolyn Facione  
 Joyce Maidens  
*In memory of Rosemary Mitchell*  
 Valerie Descamps  
*In memory of Samuel Pat Marra*  
 David Smith & Carolyn Miller  
 Marilou MacKenzie  
 Shelby Norman  
*In memory of Shane Bowles*  
 Judith Nestor  
*In memory of Sharkey Fink*  
 John Wade  
*In memory of Sonja (Smokie) Wall*  
 Gerald Wall  
*In memory of Suzanne Abraham*  
 Jean P. Abraham  
*In memory of Thomas Eugene Sheppard*  
 Thomas & Anita Sheppard  
 RCCF Board & Staff  
*In memory of Thomas McGregor*  
 Brenda Ensing  
 Lea-Ann McGregor  
*In memory of Thomas R. Rupp*  
 Randall & Jean Rupp  
*In memory of Virginia Wagner Krutz*  
 Donald & Suzanne Cleveland


*In memory of Sharon Hacker*  
 Jacqueline Howell  
 John & Roxanne Thompson  
 Chere Morrison  
 Judy McDonald  
 Larry Averill  
 Signature Truck Systems, Inc.  
 Frances Sartori  
 David Lowe  
 Gay Millon  
 Bruce Montroy  
 Don & Michelle Ressa  
 Gordon & Eileen LaFontaine  
 Tamara Sonnenberg  
 Nick & Mary Beth Panchula  
 Marie Woodrich  
 Ira Toy III  
 John & Deborah White II  
 Jeannie Staley  
 Amy & Richard Berthiaume  
 Edward & Eileen Metzler  
 Robert & Louise Spicer  
 Liberty Propane  
 Don & Allison Montroy  
 Roy & Susan Peterson  
 Carolyn Riley  
 James Bradley  
 Guy & Cheryl Bowman  
 Carol Mauro  
 Thomas Jaenicke  
 George Sanfacon  
 Mary Jane Mezaros  
 Sandra Haldy  
 Randolph Hacker  
 Ronald Hacker Family  
 Ron & Carolyn Miller  
 Lee & Terri Prindle  
 Barbara Van Tol  
 Ron Kiel  
 Ken Dubay  
 Sally Pettinger  
 Joe Kirschner  
 Edwin & Nancy Rons  
 Michael & Lori Van Den Boom  
 Debra Lauermann  
 David & Delores Archer  
 Cummings Property Management  
 Industrial Propane Service, Inc.  
 Kube Propane LLC  
 William Dunkley  
 Ron & Mindy Parrott  
 Dennis & Marilyn Miller  
 Kristine Kurnit

*In honor of Chris Ashcraft*  
 David & Diana Mattlin  
*Happy Birthday from Thela Ostling*  
 Judy Cunningham  
*Merry Christmas from Thela Ostling*  
 Ann & Bill Knaup  
 Debbie Ostling  
 Erik Ostling  
 Jan Spadora  
 John & Chris Ogren  
 Judy Cunningham  
 Lauren Ostling & Ben Pensak  
 Pam & Jim Ostling  
*In honor of Denise Sylvester*  
 Theresa Ekdom  
*In honor of Dick Lehman*  
 Thela Ostling  
*In honor of Duncan Lawrence*  
 Escalent, Inc.  
*In honor of Erin & Jason House*  
 Robert & Caroline Berard  
*In honor of Grandchildren: Tyler, Ethan, Lucas, Tanner, Jessa, & Nora*  
 Gary & Gail Silverthorn  
*In honor of Greg & Candy Rogers*  
 Jeff & Kay Wagner  
*In honor of Greg Rogers*  
 David & Fran Reece  
*In honor of Kim Mattlin Ashcraft*  
 David & Diana Mattlin  
*In honor of Mike & Kay Shaltz*  
 Thela Ostling  
*In honor of Raye Bransdorfer Polasek*  
 John & Lisbeth Polasek  
*In honor of the Spaduzzis*  
 Silas & Cassandra Freeman  
*In honor of Thela Ostling*  
 Judy Cunningham  
 Janet Spadora  
*In honor of Zonta Club*  
 John & Roxanne Thompson

PRSRT STD  
US POSTAGE PAID  
NONPROFIT ORG.  
PERMIT NO. 12  
ROSCOMMON, MI

FOR GOOD. FOR EVER. FOR EVERYONE.  
FOR 25 YEARS.



 989.275.3112

 info@myrccf.org

## Contact Us

Monday - Thursday

8am - 4pm

3975 W FEDERAL HWY STE 2 · PO BOX 824 · ROSCOMMON, MI 48653

 myrccf

 www.myrccf.org