

PRODUCT CATALOGUE

2025



**At Equip Supply, we know that time is money.
That's why we source smart, high-quality
products that reduce installation time and
increase efficiency.**

Our online store features Studbite and Cable Tray, Seismic Restraints, Strut and Supports, Fasteners, Fixings, Duct Accessories, and more, all available to order 24/7, with prompt delivery and expert support.

As a family-owned New Zealand business, we bring hands-on industry knowledge and a commitment to excellent customer service — so you get the right gear when you need it.

CONTACT US



sales@equipsupply.co.nz



0800 378 471



equipsupply.co.nz

PAGE

BLITZ SYSTEMS

STUDBITE Trapeze Adaptors; BLITZ Clip.

05

STERN CABLE TRAYS

Cable Trays & Accessories; Catenary Wire Kits & Locks.

16

DUCTING ACCESSORIES

Tapes, Ties & Sealants; Flange G Clamps; Round Duct Suspension Clamps; Duct Ties; Fasteners, Mounts & Strapping.

19

STRUTS & SUPPORTS

Strut Lengths; Strut Fittings; Strut Nuts & Fixings; Cantilever Brackets; Beam Clamps; Rubber Mounts; Pipe Supports.

24

SEISMIC PRODUCTS

BLITZ Clip; V.Lock; Strut Bracing; Seismic Fasteners.

30

FASTENERS

Bolts; Hex Nuts; Split Nuts; Flange Nuts; Coupling Nuts; Washers; Square Washers; Penny Washers; Spring Washers; Metal Fasteners; Rod Hangers; Wood Tek Screws; Concrete Anchors; Threaded Rod - Zinc; Precut Threaded Rod; Threaded Rod - Galv; Rivets; Rod Caps.

36

TOOLS & SAFETY

Measuring, Cutting & Drilling; Drivers & Sockets; Safety Gear (PPE).

44

KRONE PREMIUM COVERS

Heat Pump Covers; Gas Bottle Covers; Performance Specification.

48



Order online 24/7

Log in to our secure online store for seamless access to our full range of products.

The price you see is the price you pay.

With our 24/7 online store, you're no longer restricted to office hours—shop at your convenience and save valuable time in your day.

equipsupply.co.nz

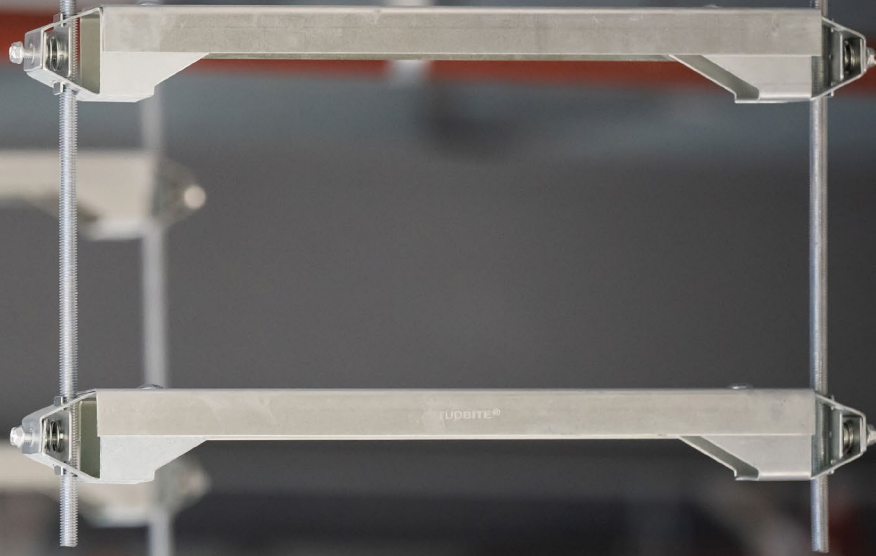


STUDBITE®

TRAPEZE ADAPTORS

75%

**LESS
FIXINGS
REQUIRED**



The STUDBITE Adaptor is designed to make installation fast and effortless, to save time and money.

The Patented STUDBITE system has been designed to work in with all standard cable containment systems, including cable tray, ladder and basket.

You'll benefit from:

- 75% less fixings
- Time-savings of up to 70% (on-site costs and installation time)
- Innovation
- Reductions in waste
- Flexibility for confined or congested spacings

**REDUCE
INSTALL
TIME**

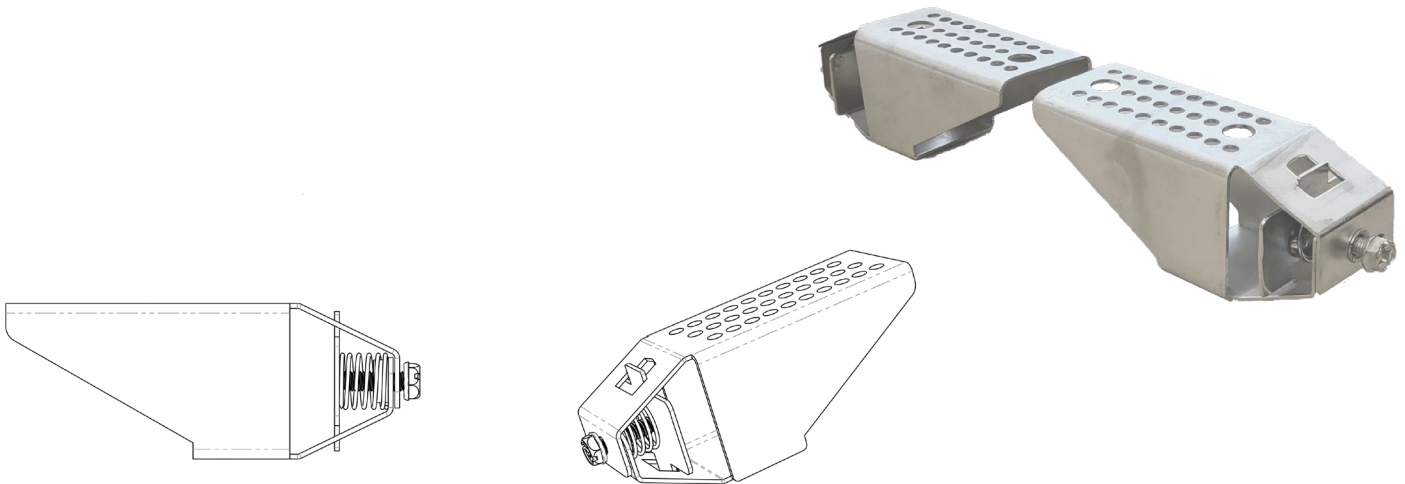
**BY UP TO
70%**



Simply pull back the plate and slide the adaptor along the threaded rod. The adaptor is easily adjustable, removing all threading challenges.

Trapeze Support Adaptor - Standard Duty

Compatible with M10 rod and deep/shallow with strut channel.



Standard STUDBITE Trapeze Adaptor Specifications

Product Code	Length (L) mm	Width (W) mm	Height (H) mm	SWL Per Adaptor Pair	Seismic Rated
SB-TSA/SD60	122	46	48	60kg *3:1 safety factor	Yes *Refer to Seismic Load Ratings below

Standard Adaptor

Seismic load ratings to AS/NZS 1170.0.

The installed system has been tested at 30°, 45° and 60° using Blitz Clip 2mm and 3.2mm Restraint Kits.

Seismic Load Rating

Configuration	USL Rating (kN)
STUDBITE STANDARD VERSION - 2mm Wire Gripper	2.0
STUDBITE STANDARD VERSION - 3.2mm Wire Gripper	2.3

Use STUDBITE SB-5/200 Screws

to fix Trapeze Supports to Channel-to-Stud Adaptors and to fix Cable Tray to Channel Support. Wire Basket Clamps are available for Basket Tray.

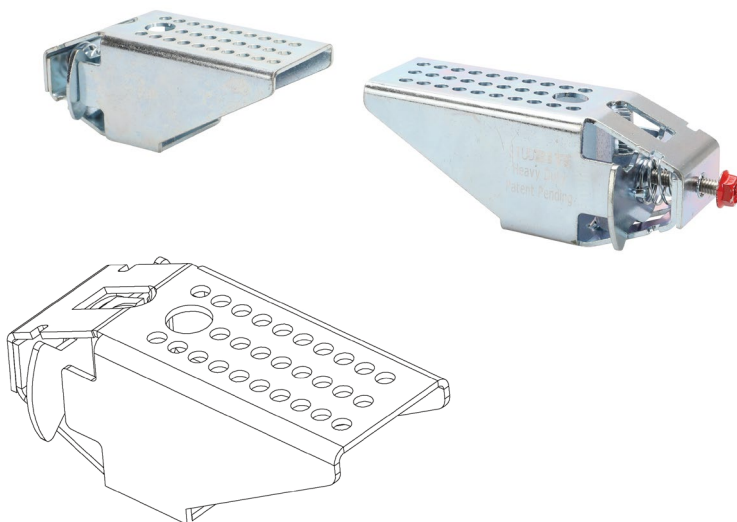
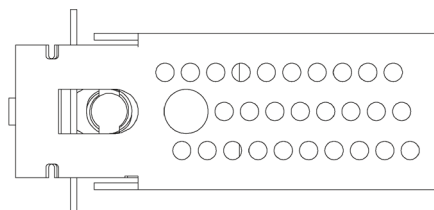


Studbite M6 x 10mm Self-Tapping Screws

Box of 200
SB-S/200

Trapeze Support Adaptor - Heavy Duty

Compatible with M10/M12 rod.



Standard STUDBITE Trapeze Adaptor Specifications

Product Code	Length (L) mm	Width (W) mm	Height (H) mm	SWL Per Adaptor Pair	Seismic Rated
SB-TSA/HD140	122	46	48	120kg *3:1 safety factor	Yes *Refer to Seismic Load Ratings below

HD Adaptor

Seismic load ratings to ASI/ASHRAE Standard 171-2017 - Method of Testing for Rating Seismic Restraints. For ASD ratings please contact us.

Seismic Load Rating	
Locking Device	LRFD Load Rating - Rated Capacity (kN)
2mm Wire Gripper	2.4
3.2mm Wire Gripper	4.4

Use STUDBITE SB-5/200 Screws

to fix Trapeze Supports to Channel-to-Stud Adaptors and to fix Cable Tray to Channel Support. Wire Basket Clamps are available for Basket Tray.



Studbite M6 x 10mm Self-Tapping Screws

Box of 200
SB-S/200

Trapeze Supports

Medium Duty Channel



Channel Support Specifications					
Product Code	Tray Width mm	Length (L) mm	Width (W) mm	Height (H) mm	Stud Centres mm
SB-TS300	300	405	50	26.5	420
SB-TS450	450	540	50	26.5	560
SB-TS600	600	720	50	26.5	735
SB-TS1000	-	1000	50	26.5	1015

Traditional Channel Build Options

Traditional slotted 41 x 41 and 41 x 21 channel can be used by inverting the adaptor.



Compatible with all STUDBITE Adaptor types/brackets.

Use STUDBITE SB-5/200 Screws to fix Trapeze Supports to Channel-to-Stud Adaptors and to fix Cable Tray to Channel Support. Wire Basket Clamps are available for Basket Tray.



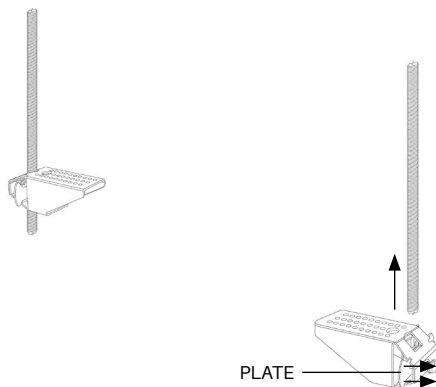
**Studbite M6 x 10mm
Self-Tapping Screws**

Box of 200
SB-S/200

Trapeze Support System

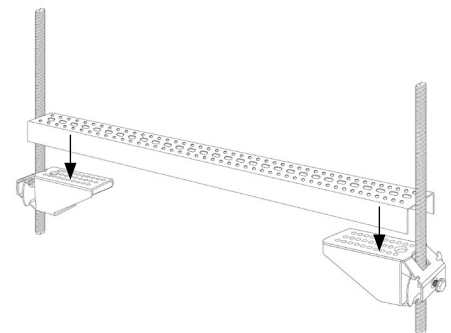
How to install the STUDBITE Trapeze Support System

1



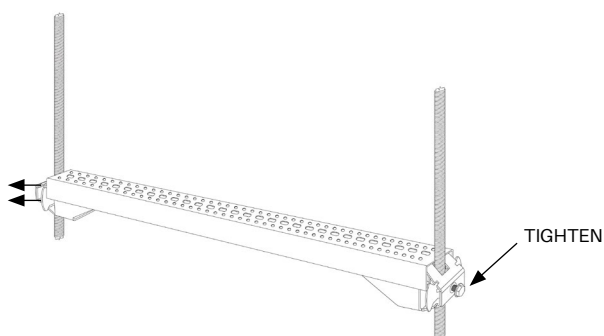
Pull back the plate on each of the STUDBITE Trapeze Support Adaptors (SB-TSA) and slide them up along each of the Threaded Rods so they face inwards towards each other.

2



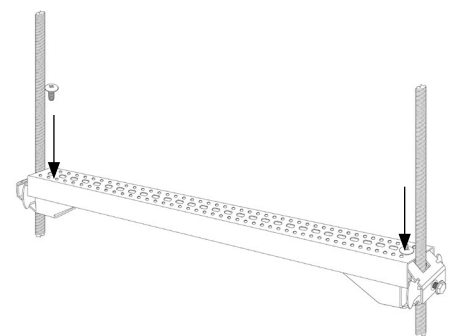
Place the Trapeze Support so it lays flat on top of the two STUDBITE Trapeze Support Adaptors, with one STUDBITE Trapeze Support Adaptor at each end.

3

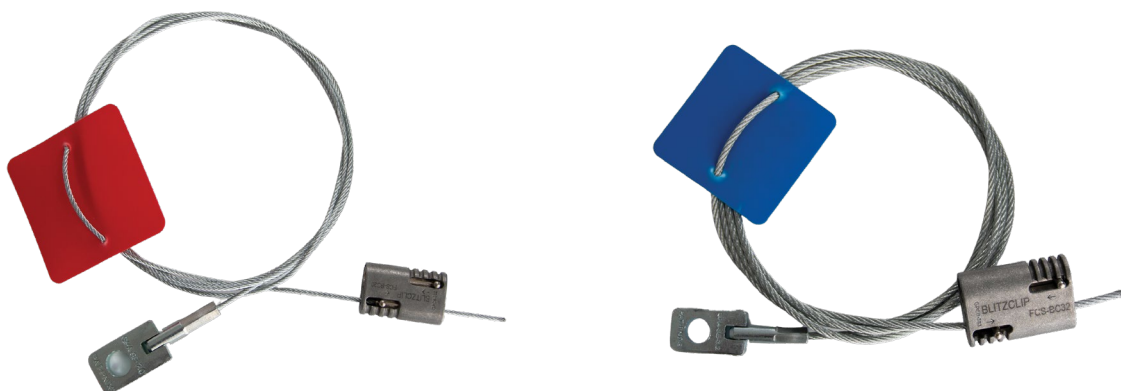


Once in place, make any necessary adjustments to the STUDBITE Channel to Stud Trapeze Support Adaptors to make the Trapeze Support level by once again pulling back the base plate to loosen the tension enough to allow repositioning. Tighten the bolts on the end of each of the STUDBITE Adaptors.

4



Insert a STUDBITE Screw to the outer most hole on the top surface of each end of the Trapeze Support to secure the system.

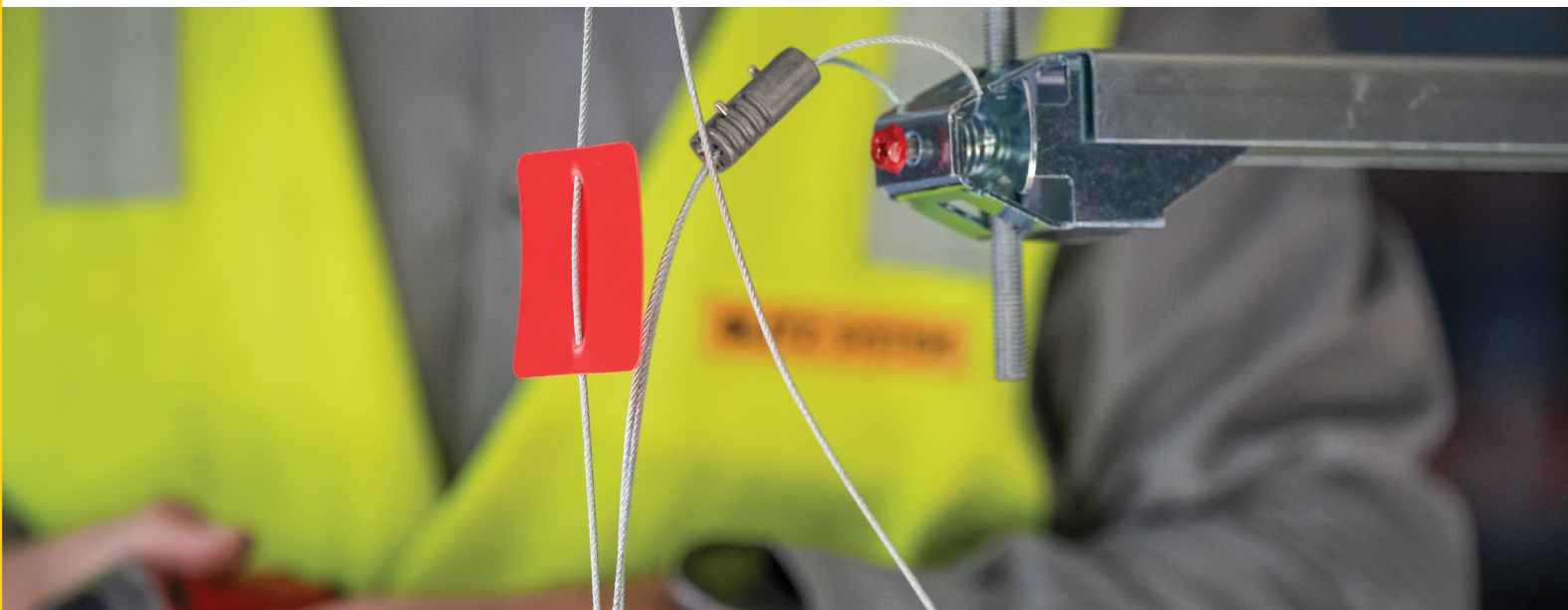


BLITZCLIP Seismic Wire Kit

- Systems comply with requirements of ANSI/ASHRAE 171-2017 and AS1170.4 for earthquake actions in Australia.
- Wire and solid seismic bracing solutions available.
- Compliant with both Heavy Duty and Standard Trapeze Support Adaptors.
- Colour coded wire to distinguish the thickness and strength.

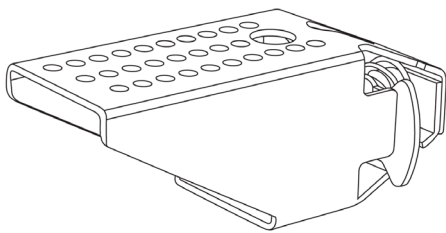
Product Code	Size	Wire Thickness	Capacity (kN)	Box Quantity
BC-22	2.0mm - 2 metre	2.0mm Red	2.49	Each
BC-25	2.0mm - 5 metre	2.0mm Red	2.49	Each
BC-32	3.2mm - 2 metre	3.2mm Blue	4.42	Each
BC-35	3.2mm - 5 metre	3.2mm Blue	4.42	Each

- Capacity includes a reduction factor.
- Capacity accounts for intended angle of use 30°, 45° and 60°.



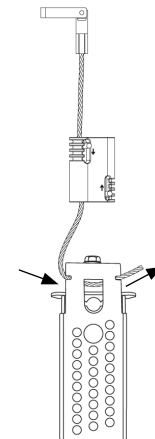
Seismic Wire Restraint System

How to install the Blitz Systems Seismic Restraint System



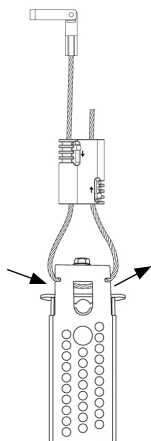
The Seismic Restraint System has been specifically designed and tested to be installed in conjunction with the Blitz Systems STUDBITE Channel to Stud Trapeze Support Adaptor. The installed system has been tested at 30°, 45° and 60° degree angles.

1



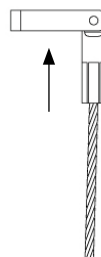
Single restraint is installed through the entire width of the STUDBITE Channel to Stud Trapeze Support Adaptor.

2



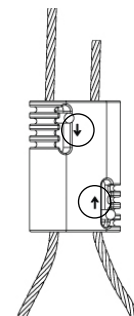
Feed the wire through the adaptor and secure back through the BLITZ CLIP.

3



Fasten the swivel bracket to the roof structure using an approved seismic fixing.

4

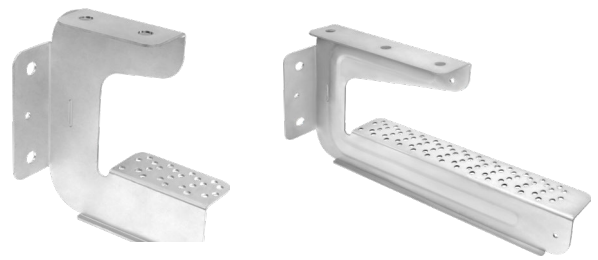


Tension the restraint by pulling the wire whilst pushing either adjustable levers on the BLITZ CLIP in the direction of the arrows stamped onto the BLITZ CLIP, until the desired tension is achieved.



Testing Compliance

Tested in accordance with ANSI/ASHRAE Standard 171-2017 to comply with AS1170.4.



Multi-Fix Bracket

- Removes need for trapeze builds when working alongside existing infrastructure.
- Multiple fixing options; top, side and thread clamp.
- Unique retrofit feature – hanger can fix straight to side of M10/M12 existing stud.
- Easily adjustable up and down stud.

Product Code	Tray/Ladder Width	Finish	Box Quantity
SB-MFH150	150mm	Zinc	10
SB-MFH300	300mm	Zinc	10

Retro-Fit Clamp

Fixes multi-fix bracket onto the side of M10/M12 stud.



Product Code	Finish	Box Quantity
SB-MFH/RFC	Zinc	10

Studbite Basket Tray Clamp

Fixes multi-fix bracket onto the side of M10/M12 stud.

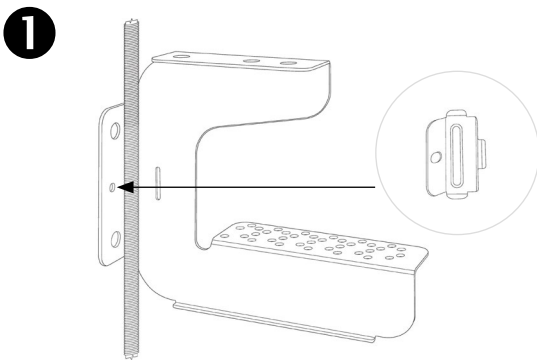


Product Code	Finish	Box Quantity
SB-BTCLAMP	Galvabond	10

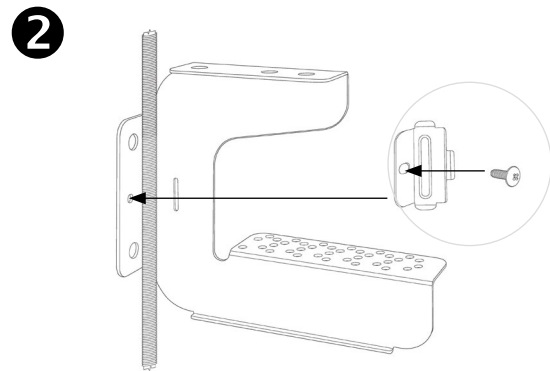


Multi-Fix Bracket

How to install the STUDBITE Multi-Fix Bracket

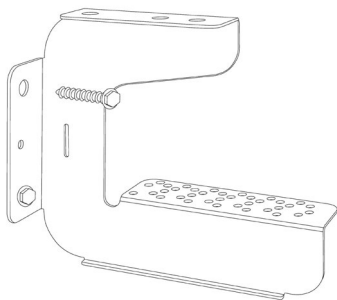


Position the STUDBITE Multi-Fix Bracket (FCS-MSH) in the desired position on the Threaded Rod so that the rod sits in the fold of the side fixing plate.



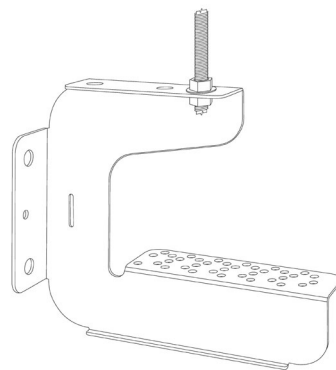
Now with the STUDBITE Retro-Fit Clamp in place, use a STUDBITE Screw to secure it.

How to install the STUDBITE Multi-Fix Bracket onto a **wall**



Place the STUDBITE Multi-Fix Bracket against the wall and mark within the holes in the side fixing plate to indicate where to drill. Remove the Bracket from the wall to drill the holes, then line up the Bracket with the holes and bolt the screw anchors directly into the wall.

How to install the STUDBITE Multi-Fix Bracket onto a **rod**



Slide a single Threaded Rod through the STUDBITE Multi-Fix Bracket hole in the top fixing plate and secure with double nut and washers.



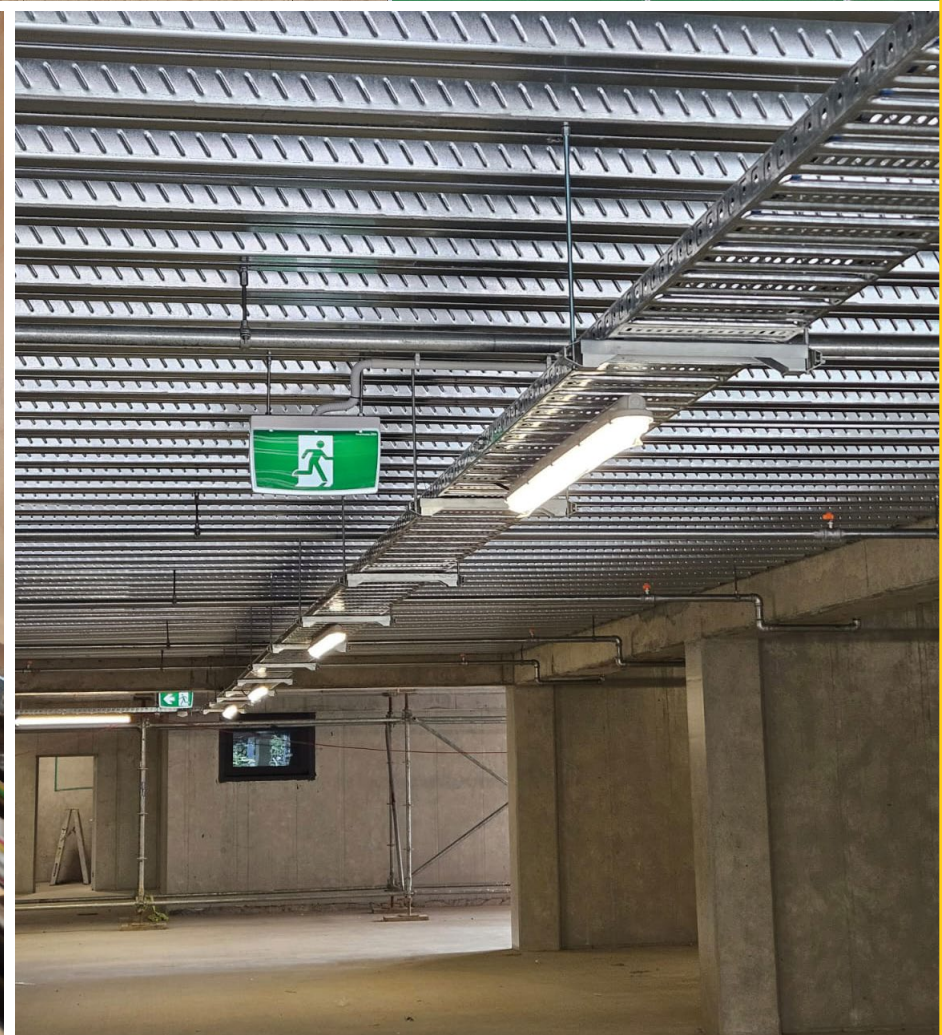
SINGLE
LASER BEAM NEEDED



Drilling Template

- ✓ Fast marking out of stud centres for the STUDBITE Trapeze System.
- ✓ Using a single laser beam eliminates misalignment of fixing positions.

Description	Code	Box Qty
Studbite Drilling Template to suit 150mm Cable Tray	SB-DT150	Each
Studbite Drilling Template to suit 300mm Cable Tray	SB-DT300	Each
Studbite Drilling Template to suit 450mm Cable Tray	SB-DT450	Each
Studbite Drilling Template to suit 600mm Cable Tray	SB-DT600	Each



Cable Tray Galvabond



Product Code	Size	Finish
ST3-150/GB	150 x 50 x 3m	Galvabond
ST3-300/GB	300 x 50 x 3m	Galvabond
ST3-450/GB	450 x 50 x 3m	Galvabond
ST3-600/GB	600 x 50 x 3m	Galvabond

Cable Tray HDG



Product Code	Size	Finish
ST3G-150/HDG	150 x 50 x 3m	HDG
ST3G-300/HDG	300 x 50 x 3m	HDG
ST3G-450/HDG	450 x 50 x 3m	HDG
ST3G-600/HDG	600 x 50 x 3m	HDG

Cable Tray Splice Plate



Product Code	Size	Finish
ST3-SP/GB	45 x 180	Galvabond
ST3G-SP/HDG	45 x 180	HDG

Cable Tray T Bracket



Product Code	Size	Finish
ST3-TB/GB	50 x 160	Galvabond
ST3G-TB/HDG	50 x 160	HDG

Radius Plate (Bends) - Adjustable



Product Code	Size	Finish
ST3-RP/GB	50 X 2000	Galvabond
ST3G-RP/HDG	50 X 2000	HDG

Cable Tray Link Plate



Product Code	Finish
ST3-LP/GB	Galvabond
ST3G-LP/HDG	HDG

Hold Down Bracket



Product Code	Finish
ST3-HDB/GB	Galvabond
ST3G-HDB/HDG	HDG

M10 Splice Bolt & Nut ZP Set



Product Code	Finish
ST3-SNB/GB	Galvabond
ST3G-SNB/HDG	HDG

Barrier Strip Galv



Product Code	Finish
ST3-BS/GB	Galvabond



GENERAL DESCRIPTION

Information

ST3 Ladder Tray System is designed for trapeze supported or surface mounted cable management and is ideally suited to small, medium and large size cables such as TPS, data comms, Mains & sub mains.

- Material galvabond 0.75mm
- 3m length
- 50mm sides
- 40mm cable laying depth
- 20mm tie-off centres

Available Finishes

- Galvabond
- Hot dip galvanized
- Powder coated

Technical Information

Load and Deflection data is derived from tests performed in a NATA certified testing environment in accordance to NEMA VE1-2009 STANDARDS.

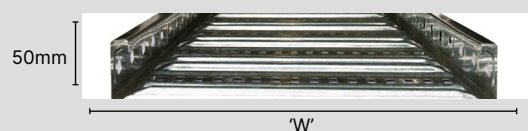
ALL Ladders exceed the class designation that has been applied to the product. Load data is based on single spans resulting in worst case scenario. Deflections listed in our table are based on continuous spans. Single span installation will result in increased deflection. For single spans multiply the corresponding deflection by 2.5

Safety Factor 1.5 over collapse load.

ST3 LADDER TRAY



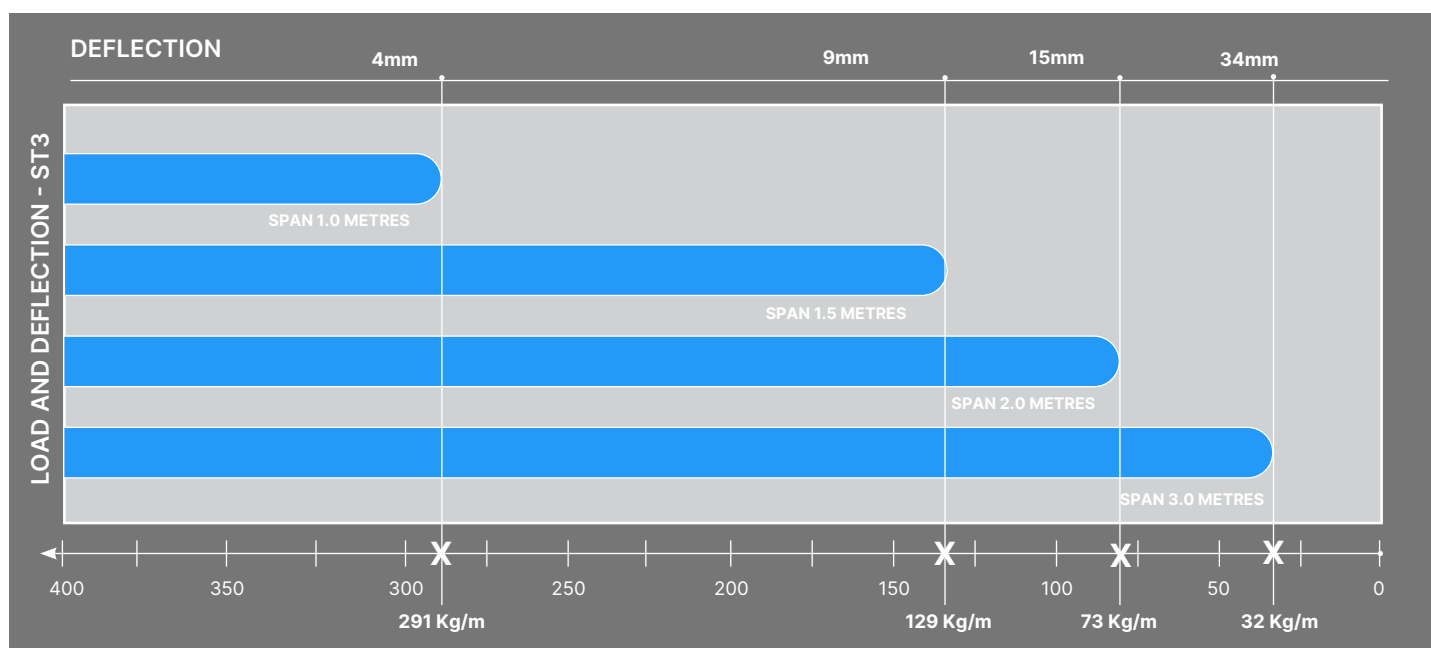
ST3 LADDER TRAY TRAY PROFILE



PRODUCT CODE	LW	OW	L	H
ST3150	150	172	3000	50
ST3300	300	322	3000	50
ST3450	450	472	3000	50
ST3600	600	622	3000	50

LW: Laying Width (mm)
OW: Overall Width (mm)

L: Length (mm)
H: Overall Height (mm)



Save time and money with QUICK-CAT Catenary Kits

Make installing catenary wire faster and simple, with our easy-to-handle, pvc-coated, multi-strand wire rope and easily-tensioned locks.




FLEXIBLE WIRE ROPE


- Flexible and easy to handle.
- Requires only one person to install.
- Is easily installed around corners.
- Safer than conventional methods.



TENSIONING LOCK

Combine our flexible wire rope with our tensioning locks and you can **complete the job up to five times faster** than conventional methods, saving you time and money.

Catenary Kits	
	
Product Code	Product
QC2550050	500m Wire Rope & 50 Locks
QC2525030	250m Wire Rope & 30 Locks

Locks	
	
Product Code	Quantity
QCL25/50	50
QCL25/250	250

TAPES, TIES & SEALANTS

Reinforced Aluminium Foil Tape



Product Code

Size

FT7050R

70mm x 50m

Duct Wrap Protection Film Blue



Product Code

Size

DW600

600mm x 100m
(50 micron thickness)

DW900

900mm x 100m
(50 micron thickness)

Linerless Foam Gasket Tape



Product Code

Size

LFT18515

18mm x 5mm x 15m

Duct Hanging Strap Black



Product Code

Size

DHS-75/100M

75mm x 100m

Duct Tape PVC - High Tack



Product Code

Colour

Size

DTBLK4830

Black

48mm x 30m

DTWH4830

White

48mm x 30m

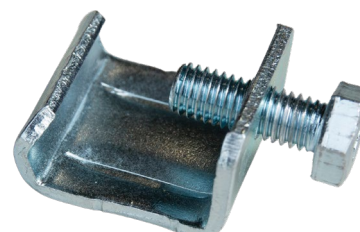
DTSLV4830

Silver

48mm x 30m

FLANGE G CLAMPS

G Duct Flange Clamp 3mm



Product Code

Size

GFDC3

3mm

TAPES, TIES & SEALANTS

Silicone Neutral Cure



Product Code	Size	Colour
CS300CL	300ml	Clear

High-Temperature Silicone



Product Code	Size	Colour
HTS300GR	300ml	Grey

ZG-90 Cold Zinc Galv 500ml Aerosol



Product Code	Size	Colour
ZG90	500ml	Grey

Duct Sealant Grey 300ml



Product Code	Size	Colour
DS300GR	300ml	Grey

ROUND DUCT SUSPENSION CLAMPS

Duct Suspension Clamp with Rubber



Product Code	Size
DSC150/R	150dia
DSC200/R	200dia
DSC250/R	250dia
DSC300/R	300dia
DSC350/R	350dia
DSC400/R	400dia
DSC500/R	500dia

DUCT TIES

Duct Tie



Product Code	Size	Finish	Qty
DT700/100	700 x 9mm	Nylon	100
DT900/100	900 x 10mm	Nylon	100
DT1200/100	1200 x 9mm	Nylon	100

Features

- Green star compliant
- Fast dry
- Low VOC and low odour
- Excellent workability
- Slump resistant
- Low shrinkage

Description

STERN Duct Sealant is a grey, water-based duct sealant used in medium and high-pressure duct systems. It has a special formulation which provides permanent flexibility, excellent water resistance and superior sealing strength.

Applications

Suitable for all types of HVAC duct systems including sheet metal duct, duct board and flexible ducts, sealing of seam, spigot and flange joints in metal fabrications.

Preparation & Application

Ensure that surfaces are clean from chemicals, dust, dirt or oil residues. Cut tip off cartridge and apply sealant to desired location. Allow to dry for at least 2 hours if over painting is required.

Storage & Safety

STERN Duct Sealant has an 18-month shelf life when stored between 2-30°C in a cool, dry, non-humid place. Keep contents out of reach of children. Content is non-hazardous.

Curing Time	24hr
Elongation at Break	250%
Service Temp Range	-20°C to 75°C
VOC	29.9g/L

Duct Sealant Grey 300ml



Product Code	Size	Colour
DS300GR	300ml	Grey

FASTENERS, MOUNTS & STRAPPING

L Bracket with Rubber Mount for Duct Install



Product Code	Size
LBRM	Std

Z Bracket with Rubber Mount for Duct Install



Product Code	Size
ZBRM	Std

M10 Duct Hanger Bolt



Product Code	Thread Size
DHB/M10	M10

Hex Bolt - Nylon



Product Code	Thread Size	Length	Qty
HBN-30M8/NYL	M8	30mm	Each
HBN-30M10/NYL	M10	30mm	Each

Flange Nuts - Zinc



Product Code	Thread Size	Qty
FN-M8Z/100	M8	100
FN-M10Z/100	M10	100

Flange Bolt - Zinc



Product Code	Thread Size	Length	Qty
HBZ-M825Z/100	M8	25mm	100

Metal Tek - Zinc



Product Code	Size	Length	Qty
MT1016Z	10G	16mm	500

Rod Cap



Product Code	Thread Size	Finish	Qty
TREC10	M10	Plastic	Each

FASTENERS, MOUNTS & STRAPPING

Aluminium Rivet



Product Code	Diameter	Length	Qty
RIV44ALU/100	3.2mm	9.7mm	100
RIV46ALU/100	3.2mm	13mm	100

Drill Bit Packs - Silver Series



Product Code	Length	Qty
DB-3.26MM	3.26mm (1/8')	2pc

Poly Buckles for Blue Strapping



Product Code	Size	Quantity
BPS-BUCKLE	19mm	1000

Blue Polystrap Roll



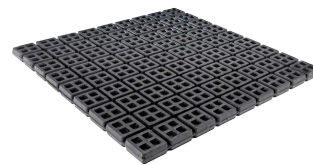
Product Code	Size
BPS-19/1000	19 x 1000mm

Rippable Waffle Pad



Product Code	Size
RP300300	300 x 300 x 10mm

Waffle Pad



Product Code	Size
RP450450	450 x 450 x 20mm

Anti Vibration Rubber



Product Code	Size
RP5050	50 x 50 x 10mm

Neoprene Rubber Strut Mounts



Product Code	Size
RSM4080	40-80kg Load
RSM90180	90-180kg Load

STRUT LENGTHS

Slotted Strut Channel HDG & ZAM



Product Code	Size	Length	Finish
S1000T/HDG/3	41 x 41 x 2.5mm	3m	HDG
S1000T/ZM/4	41 x 41 x 2.5mm	4m	ZAM

3m Slotted Strut Channel Pre-Galv



Product Code	Size	Length	Finish
S3300T/PG/3	41 x 21 x 2.5mm	3m	Pre-Galv
S1000T/PG/3	41 x 41 x 2.5mm	3m	Pre-Galv

Unslotted Channel 4m ZM



Product Code	Size	Length	Finish
S1000/ZM/4	41 x 41 x 2.5mm	4m	ZAM

Strut Channel Back-to-Back 3m HDG



Product Code	Size	Length	Finish
SC824125/HDG	82 x 41 x 2.5mm	3m	HDG

STRUT FITTINGS

90° 2 Hole Strut Angle M12 ZP



Product Code	Type	Finish
2H90ZP	2 hole 90°	Zinc

2 Hole Strut Angle M12 HDG



Product Code	Type	Finish
2H90HDG	2 hole 90°	HDG

Strut Angle M12 HDG



Product Code	Type	Finish
3H90HDG	3 hole 90°	HDG

Strut Angle M12 HDG



Product Code	Type	Finish
4H90HDG	4 Hole 90°	HDG

STRUT FITTINGS

Angle Bracket Braced - 4 Hole



Product Code	Type	Finish
4HABB	4 Hole 90°	HDG

3 Hole Strut Angle M12 HDG



Product Code	Type	Finish
3H45HDG	3 Hole 45°	HDG

45° Angle Strut Brace



Product Code	Type	Finish
45ASB	45° Brace	HDG

U Shape Bracket 40x20mm HDG



Product Code	Size	Finish
UB4121HDG	40 x 20mm	HDG
UB4141HDG	40 x 40mm	HDG

Flat Plate - 4 Hole HDG



Product Code	Type	Finish
4HFPHDG	4 Hole	HDG

4 Hole Strut Base Plate 150 - HDG



Product Code	Type	Finish
SBPAHDG	Angle	HDG

M12 Hinged Strut Joint with Welded Lap Joint



Product Code	Type	Finish
HSJZPM12	M12 Hinge	Zinc

M10 Adjustable Rod Joint with Lock Plate



Product Code	Size	Finish
ARJM10	M10 Adjustable Angle	Zinc

STRUT FITTINGS

Flat Plate Right Angle HDG



Product Code	Size	Finish
FP90HDG	90 x 90mm	HDG

Flat Plate Tee



Product Code	Type	Finish
FPTEE	4 Hole Tee	HDG

4 Hole Tee Bracket Wide Angle



Product Code	Size	Finish
4HTBWA	Wide Angle	HDG

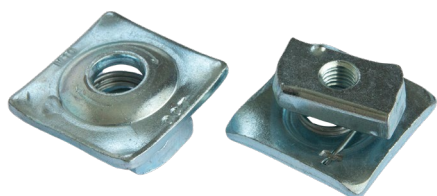
Strut End Caps - Grey plastic



Product Code	Size
SEC4121/GR	41 x 21mm
SEC4141/GR	41 x 41mm

STRUT NUTS & FIXINGS

M10 Speed Nut with Washer - ZP



Product Code	Size	Finish
SNW-M10/Z	M10	Zinc

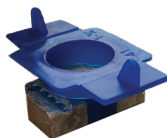
Speed Nut Zinc



Product Code	Size	Finish
SN-M8/Z	M8	Zinc
SN-M10/Z	M10	Zinc
SN-M12/Z	M12	Zinc

STRUT NUTS & FIXINGS

Speed Nut HDG



Product Code	Size	Finish
SN-M10/HDG	M10	HDG
SN-M12/HDG	M12	HDG

Rod Stiffener M12



Product Code	Size	Finish
RSM12	M12	Zinc

M10 Rod Base Plate ZP



Product Code	Size	Finish
RBPM10Z	Horizontal	Zinc
RBPVM10Z	Vertical	Zinc

CANTILEVER BRACKETS

Cantilever Strut Bracket HDG



Product Code	Size	Finish
CSB450HDG	450mm	HDG
CSB550HDG	550mm	HDG
CSB750HDG	750mm	HDG

Braced Cantilever Strut Bracket HDG



Product Code	Size	Finish
CSBB450HDG	450mm	HDG
CSBB635HDG	635mm	HDG
CSBB780HDG	780mm	HDG
CSBB1080HDG	1080mm	HDG

BEAM CLAMPS

U Bolt Adjustable Beam Clamp Channel



Product Code	Size
UBOLTABC	For 40x40 and 20x40 channel

Beam Clamp for Threaded Rod Zinc



Product Code	Rod Size
BCTR10Z	M10
BCTR12Z	M12

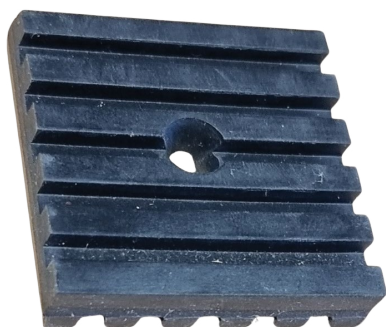
RUBBER MOUNTS

Neoprene Rubber Strut Mounts



Product Code	Size
RSM4080	40-80kg Load
RSM90180	90-180kg Load

Anti Vibration Rubber



Product Code	Size
RP5050	50 x 50 x 10mm

PIPE SUPPORTS

Quick Lock Clamp - Rubber Lined / ZP



Product Code	Size
PC12-14	12-14mm
PC15-19	15-19mm
PC21-23	21-23mm
PC26-28	26-28mm
PC32-35	32-35mm
PC38-45	38-45mm
PC48-56	48-56mm
PC57-61	57-61mm
PC63-70	63-70mm
PC74-80	74-80mm
PC83-91	83-91mm
PC100-105	100-105mm
PC108-114	108-114mm
PC115-125	115-125mm

PIPE SUPPORTS

Black Twist Channel Tie Base - For Cable Tie



Product Code

Colour

TTBStrut

Black

Black Twist Tie Base for M10 Threaded Rod & Cable Tie



Product Code

Colour

TTBRod

Black

Pipe Tie with 370 x 7.6mm Nylon Tie



Product Code

Colour

Size

PTBLK/25

Black

Pack of 25

PTWH/25

White

Pack of 25

Time Saving Products

Pipe Tie with Sleeve

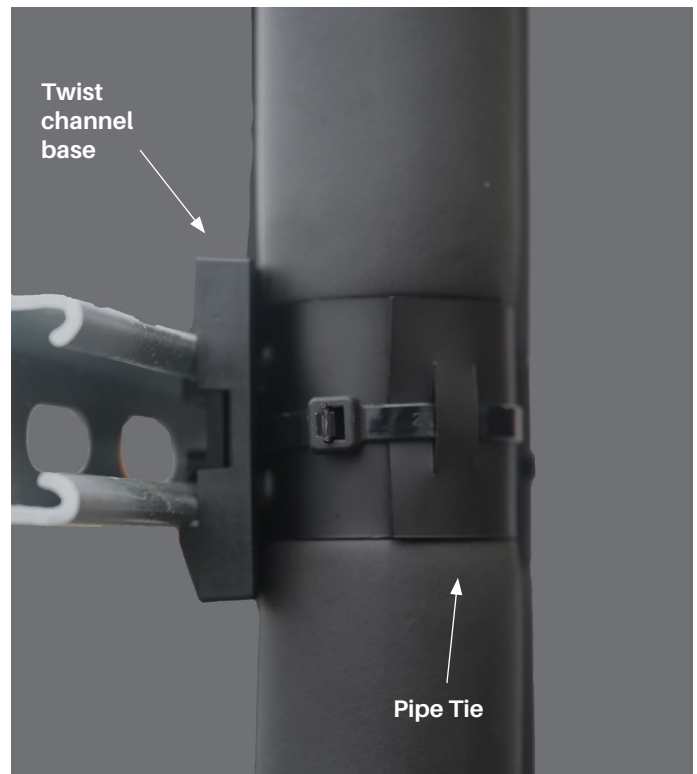
Can be used in conjunction with twist tie bases or threaded directly through slots in strut. The sleeve protects insulation on pipe or pair coil. Very quick and easy to use!

Twist Channel Base

Locks into strut channel with 1/4 turn twist. Use with cable ties or pipe tie with sleeve to protect insulation.

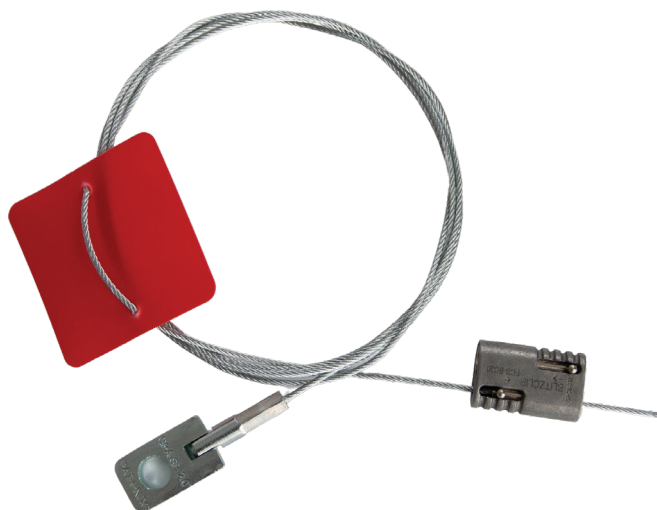
Twist Tie Base for M10 Rod

Locks onto M10 threaded rod with 1/4 turn twist. Use with cable ties or pipe tie with sleeve to protect insulation.



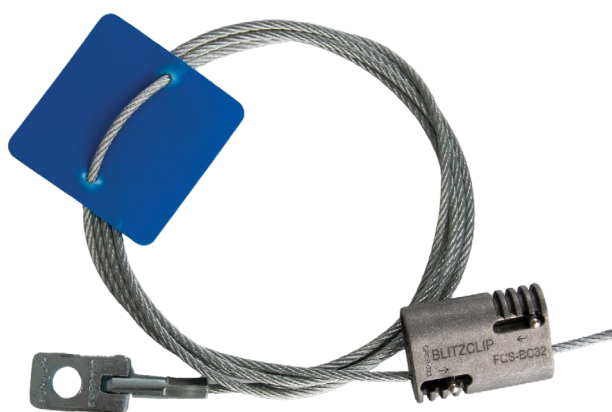
BLITZ CLIP

Blitz Clip Seismic Wire Kit - 2mm

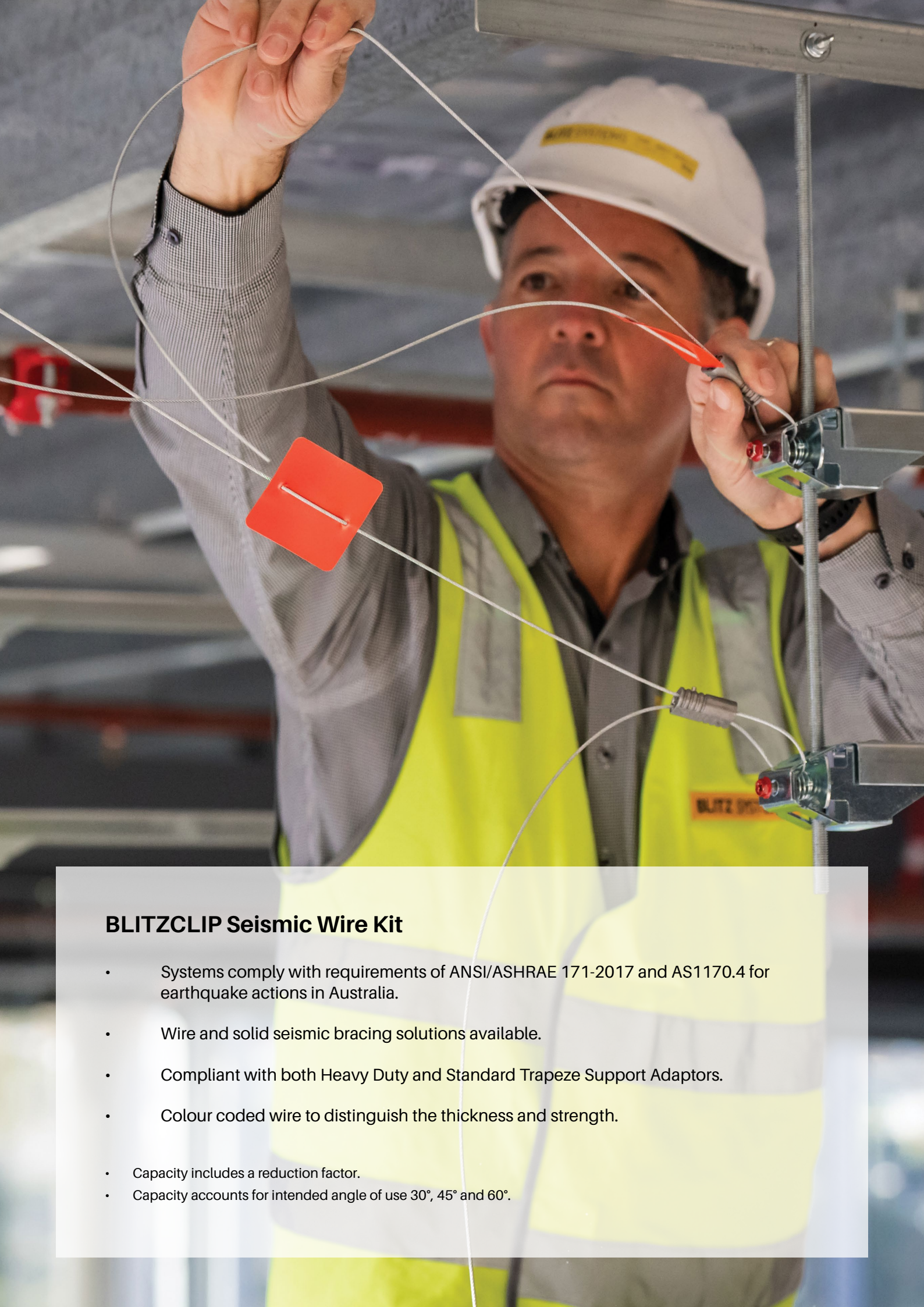


Product Code	Size	Wire Thickness	Capacity (kN)	Quantity
BC-22	2.0mm - 2 metre	2.0mm Red	2.49	Each
BC-25	2.0mm - 5 metre	2.0mm Red	2.49	Each

Blitz Clip Seismic Wire Kit - 3.2mm



Product Code	Size	Wire Thickness	Capacity (kN)	Quantity
BC-32	3.2mm - 2 metre	3.2mm Blue	4.42	Each
BC-35	3.2mm - 5 metre	3.2mm Blue	4.42	Each



BLITZCLIP Seismic Wire Kit

- Systems comply with requirements of ANSI/ASHRAE 171-2017 and AS1170.4 for earthquake actions in Australia.
- Wire and solid seismic bracing solutions available.
- Compliant with both Heavy Duty and Standard Trapeze Support Adaptors.
- Colour coded wire to distinguish the thickness and strength.
- Capacity includes a reduction factor.
- Capacity accounts for intended angle of use 30°, 45° and 60°.

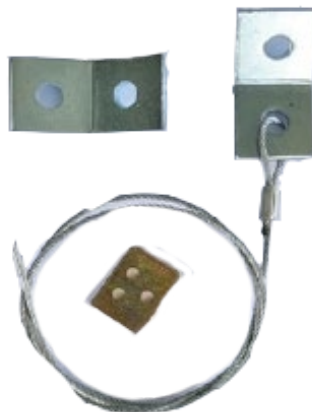
V.Lock

V.Lock 3mm Seismic Cable Brace with Retrofit Hook Brackets



Product Code	Cable Diameter	Length
V31H	3mm	1m
V32H	3mm	2m
V33H	3mm	3m
V34H	3mm	4m
V36H	3mm	6m
V310H	3mm	10m

V.Lock 3mm Seismic Cable Brace - 45° Angle Brackets



Product Code	Cable Diameter	Length
V31AB45	3mm	1m
V32AB45	3mm	2m
V33AB45	3mm	3m
V34AB45	3mm	4m
V36AB45	3mm	6m
V310AB45	3mm	10m

V.Lock 5mm Seismic Cable Brace - Hook Brackets



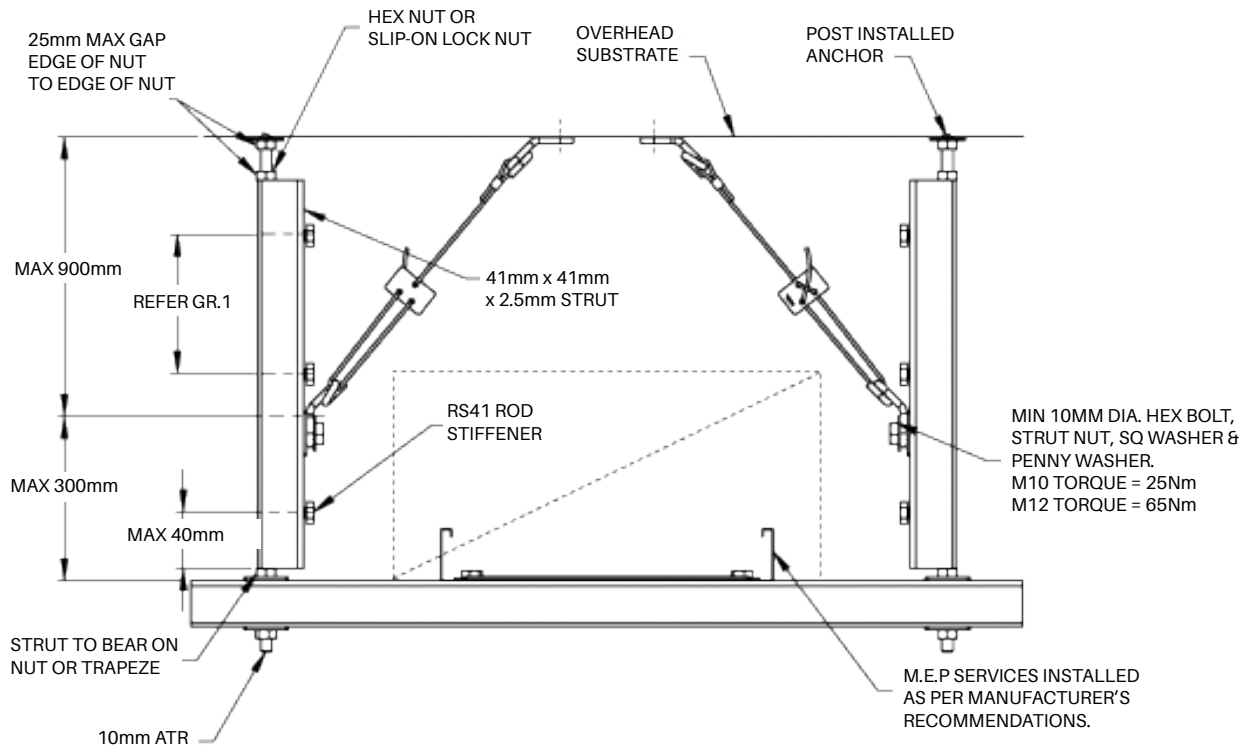
Product Code	Cable Diameter	Length
V52H	5mm	2m
V53H	5mm	3m
V54H	5mm	4m
V56H	5mm	5m

V.Lock 5mm Seismic Cable Brace - 45° Angle Brackets



Product Code	Cable Diameter	Length
V52AB45	5mm	2m
V53AB45	5mm	3m
V54AB45	5mm	4m
V56AB45	5mm	5m

V.Lock

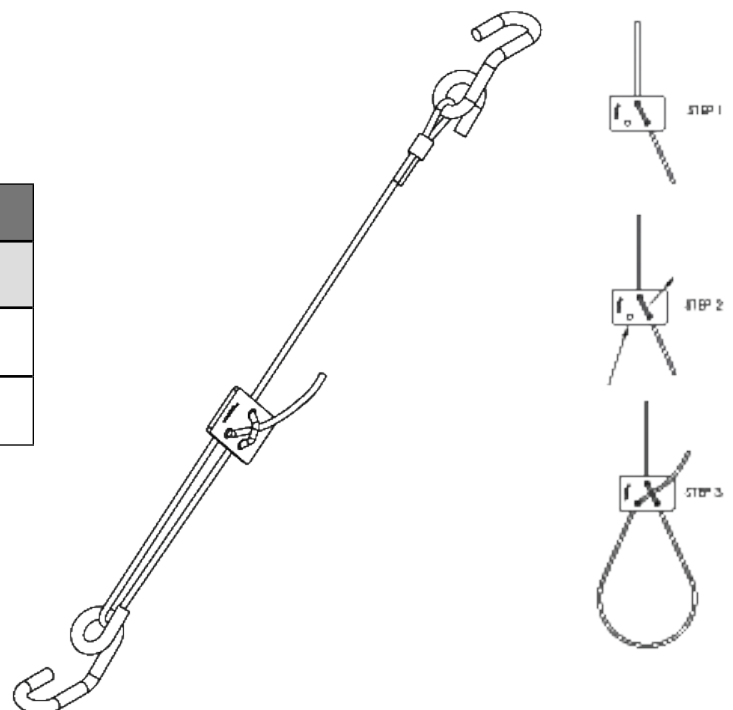


Elevated Brace Arm Attachment - Trapeze Racks

2-way or 4-way Cable Brace
External and Internal Directions

V.Lock Seismic Cable Brace with Retrofit Hook Brackets

V.Lock 5mm Seismic Cable Brace - 45° Angle Brackets	
Cable Size	ULS (Ultimate Limit State)
No.3 (3.8mm / 1/8")	485 kg
No. 5 (4.75mm / 3/16")	635kg



STRUT BRACING

3m Slotted Strut Channel Pre-Galv



Product Code	Size	Length
S1000T/PG/3	41 x 41 x 2.5mm	3m

3 Hole Strut Angle M12 HDG



Product Code	Size	Finish
3H45HDG	45°	HDG

M12 Hinged Strut Joint with Welded Lap Joint



Product Code	Size
HSJZPM12	M12

Rod Stiffener



Product Code	Size
RSM12	M10/12

Speed Nut Zinc



Product Code	Size	Finish
SN-M8/Z	M8	Zinc
SN-M10/Z	M10	Zinc
SN-M12/Z	M12	Zinc

SEISMIC FASTENERS

Hex Bolt Zinc



Product Code	Thread Size	Length	Finish	Qty
HB-M1030Z/100	M10	30mm	Zinc	100
HB-M1230Z/100	M12	30mm	Zinc	100

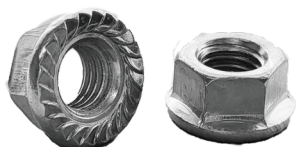
Hex Nuts Zinc



Product Code	Thread Size	Finish	Qty
HNZ-M10/100	M10	Zinc	100
HNZ-M12/100	M12	Zinc	100

SEISMIC FASTENERS

Flange Nuts Zinc



Product Code	Thread Size	Finish	Qty
FN-M10Z/100	M10	Zinc	100

Square Washer - Galv



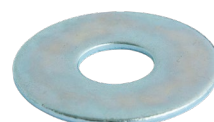
Product Code	Hole Size	Finish	Qty
SWG-4040M10/100	M10	Galv	50
SWG-4040M12/100	M12	Galv	50

Concrete Screw Anchor - Galv

Seismic Rated

Product Code	Thread Size	Length	Finish	Qty
CSA-M855/G	M8	55mm	Galv	Each
CSA-M875/G	M8	75mm	Galv	Each
CSA-M10100/G	M10	100mm	Galv	Each

Penny Washer - Zinc



Product Code	Hole Size	Finish	Qty
PW-30M10Z/100	M10	Zinc	100
PW-32M12Z/200	M12	Zinc	200

Concrete Screw Anchor - Zinc

Seismic Rated

Product Code	Thread Size	Length	Finish	Qty
CSA-M660/Z	M6	60mm	Zinc	Each
CSA-M880/Z	M8	80mm	Zinc	Each

BOLTS

Hex Bolt Zinc



Product Code	Thread Size	Length	Finish	Qty
HB-M1020Z/150	M10	20mm	Zinc	150
HB-M1030Z/100	M10	30mm	Zinc	100
HB-M1040Z/150	M10	40mm	Zinc	150
HB-M1050Z/75	M10	50mm	Zinc	75
HB-M1075Z/75	M10	75mm	Zinc	75
HB-M10100Z/50	M10	100mm	Zinc	50
HB-M10120Z/50	M10	120mm	Zinc	50
HB-M1020Z/75	M12	20mm	Zinc	75
HB-M1230Z/100	M12	30mm	Zinc	100
HB-M1250Z/75	M12	50mm	Zinc	75
HB-M1275Z/50	M12	75mm	Zinc	50
HB-M12100Z/50	M12	100mm	Zinc	50
HB-M12120Z/50	M12	120mm	Zinc	50

Hex Bolt Galv



Product Code	Thread Size	Length	Finish	Qty
HBG-M830G/200	M8	30mm	Galv	200
HBG-M1035G/150	M10	35mm	Galv	150

Concrete Thru Bolts/Wedge Anchors



Product Code	Thread Size	Length	Finish	Qty
CTB-M1090/G	M10	90mm	Galv	Each
CTB-M12100/G	M12	100mm	Galv	Each

HEX NUTS

Hex Nuts Zinc



Product Code	Thread Size	Finish	Qty
HNZ-M10/100	M10	Zinc	100
HNZ-M12/100	M12	Zinc	100

Hex Nuts Galv



Product Code	Thread Size	Finish	Qty
HNG-M8/200	M8	Galv	200
HNG-M10/100	M10	Galv	200
HNG-M12/200	M12	Galv	200

SPLIT NUTS

Split Nuts Zinc



Product Code	Thread Size	Finish	Qty
SPLITN10	M10	Zinc	Each

Flange Nuts Zinc



Product Code	Thread Size	Finish	Qty
FN-M8Z/100	M8	Zinc	100
FN-M10Z/100	M10	Zinc	100
FN-M12Z/100	M12	Zinc	100

COUPLING NUTS

Coupling Nuts Zinc



Product Code	Thread Size	Finish	Qty
TRJ10Z	M10	Zinc	Each
TRJ12Z	M12	Zinc	Each

WASHERS

Washer - Zinc



Product Code	Hole Size	Finish	Qty
RW-17M8Z/200	M8	Zinc	200
RW-21M10Z/200	M10	Zinc	200
RW-24M12Z/100	M12	Zinc	100

Washer - Galv



Product Code	Hole Size	Finish	Qty
RWG-22M8/200	M8	Galv	200
RWG-25M10/200	M10	Galv	200
RWG-28M12/200	M12	Galv	200

SQUARE WASHERS

Square Washer - Galv



Product Code	Hole Size	Finish	Qty
SWG-4040M10/50	M10	Galv	50
SWG-4040M12/50	M12	Galv	50
SWG-5050M12/50	M12	Galv	50

Penny Washer - Zinc



Product Code	Hole Size	Finish	Qty
PW-30M10Z/100	M10	Zinc	100
PW-32M12Z/200	M12	Zinc	200

SPRING WASHERS

Spring Washer - Zinc



Product Code	Hole Size	Finish	Qty
SPW-M10Z/200	M10	Zinc	200

Spring Washer - Galv



Product Code	Hole Size	Finish	Qty
SPW-M10G/200	M10	Galv	200

METAL FASTENERS

Metal Tek Galv



Product Code	Size	Length	Finish	Neo Washer	Qty
MT1025GN/100	10G	25mm	Galv	✓	100
MT1235GN/100	12G	35mm	Galv	✓	100
MT1255GN/100	12G	55mm	Galv	✓	100
MT1475GN/100	14G	75mm	Galv	✓	100



Metal Tek



Product Code	Size	Length	Finish	Qty
MT1016Z/500	10G	16mm	Zinc	500
MT1016G/1000	10G	16mm	Galv	1000

Metal Tek Ruspert



Product Code	Size	Length	Finish	Qty
MT1424R/200	14G	24mm	Ruspert	200



ROD HANGERS

Concrete Vertical Rod Hanger - Zinc

*Seismic Rated*

Product Code	Hole Size	Length	Thread Size	Qty
CVH-640M10/Z	M6	40mm	M10	Each
CVH-655M10/Z	M6	55mm	M10	Each
CVH-850M10/Z	M8	50mm	M10	Each
CVH-850M12/Z	M8	50mm	M12	Each

Concrete Vertical Rod Hanger - Galv

*Seismic Rated*

Product Code	Hole Size	Length	Thread Size	Qty
CVHG-640M10/G	M6	40mm	M10	Each
CVHG-850M10/G	M8	50mm	M10	Each

Steel Rod Hanger - Zinc



Product Code	Version	Thread Size	Length	Finish	Qty
SVH-625M10/Z	Vertical	M10	25mm	Zinc	Each
SHH-625M10/Z	Side Mount	M10	25mm	Zinc	Each

Wood Rod Hanger - Zinc



Product Code	Version	Thread Size	Length	Finish	Qty
WVH-1425M10/Z	Vertical	M10	25mm	Zinc	Each
WVH-1450M10/Z	Vertical	M10	50mm	Zinc	Each
WHH-1450M10/Z	Side Mount	M10	50mm	Zinc	Each

WOOD TEK

Wood Tek - Galv



Product Code	Size	Length	Finish	Neo Washer	Qty
WT1225GN/100	12G	25mm	Galv	✓	100
WT1235GN/100	12G	35mm	Galv	✓	100
WT1255GN/100	12G	55mm	Galv	✓	100

Wood Tek - Galv



Product Code	Size	Length	Finish	Neo Washer	Qty
WT1435G/100	14G	35mm	Galv	✗	100
WT1475G/100	14G	75mm	Galv	✗	100
WT1490G/100	14G	90mm	Galv	✗	100

CONCRETE ANCHORS

Concrete Screw Anchor - Zinc

Seismic Rated



Product Code	Thread Size	Length	Qty
CSA-M660/Z	M6	60mm	Each
CSA-M880/Z	M8	80mm	Each

Concrete Screw Anchor - Galv

Seismic Rated



Product Code	Thread Size	Length	Qty
CSA-M855/G	M8	55mm	Each
CSA-M875/G	M8	75mm	Each
CSA-M10100/G	M10	100mm	Each

THREADED ROD - ZINC

Threaded Rod - Zinc



Product Code	Thread Size	Length	Finish	Qty
TR10Z/1MTR	M10	1m	Zinc	Each
TR10Z/2MTR	M10	2m	Zinc	Each
TR10Z/3MTR	M10	3m	Zinc	Each
TR12Z/1MTR	M12	1m	Zinc	Each
TR12Z/2MTR	M12	2m	Zinc	Each
TR12Z/3MTR	M12	3m	Zinc	Each

PRECUT THREADED ROD

Precut Threaded Rod - Zinc



Product Code	Thread Size	Length	Finish	Qty
TR10Z/035	M10	35mm	Zinc	Each
TR10Z/100	M10	100mm	Zinc	Each
TR10Z/150	M10	150mm	Zinc	Each
TR10Z/200	M10	200mm	Zinc	Each
TR10Z/300	M10	300mm	Zinc	Each
TR10Z/400	M10	400mm	Zinc	Each
TR10Z/500	M10	500mm	Zinc	Each
TR10Z/600	M10	600mm	Zinc	Each
TR10Z/700	M10	700mm	Zinc	Each
TR10Z/800	M10	800mm	Zinc	Each
TR10Z/900	M10	900mm	Zinc	Each
TR10Z/1200	M10	1200mm	Zinc	Each

THREADED ROD - GALV

Threaded Rod - Galv



Product Code	Thread Size	Length	Finish	Qty
TR10HDG/2MTR	M10	2m	Galv	Each
TR12HDG/2MTR	M12	2m	Galv	Each

RIVETS

Aluminium Rivet



Product Code	Diameter	Length	Qty
RIV44ALU/100	3.2mm	9.7mm	100
RIV46ALU/100	3.2mm	13mm	100

ROD CAPS

Rod Cap



Product Code	Thread Size	Finish	Qty
TREC10	M10	Plastic	Each



MEASURING, CUTTING & DRILLING

Tape Measure - Ultimax Pro



Product Code	Size	Qty
TM8M	8m	Each

Snapcutter 18mm Allmetal



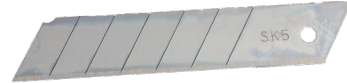
Product Code	Size	Qty
SC18MM	18mm	Each

Snapcutter 25mm



Product Code	Size	Qty
SC25MM	25mm	Each

Snapcutter - Snap Off Blades



Product Code	Length	Qty
SCB18MM/10	18mm	10
SCB25MM/10	25mm	10

M10 Threaded Rod Cutter



Product Code	Qty
RCM10	Each

Replacement M10 Die Set for M10 Threaded Rod Cutter



Product Code	Qty
RCRBM10	Each

MEASURING, CUTTING & DRILLING

Masonry Drill Bit



Product Code	Length	Size
DBM-110/5MM	110	5
DBM-160/5MM	160	5
DBM-160/6MM	160	6
DBM-160/8MM	160	8
DBM-160/10MM	210	10
DBM-160/12MM	210	12

Drill Bit - Silver Series



Product Code	Size
DB-8MM	8mm
DB-10MM	10mm
DB-11MM	11mm
DB-12MM	12mm

Cutting Disks



Product Code	Size	Thickness	Qty
CD115/10	115dia	1mm	10
CD125/10	125dia	1mm	10

Metal Cutting Circular Saw Blade



Product Code	Dia	Teeth	Arbor
MCB1362036T	136mm	36	20dia

Drill Bit Packs - Silver Series



Product Code	Length	Qty
DB-3.26MM	3.26mm (1/8')	2pc

DRIVERS AND SOCKETS

Thunderzone Impact Nutsetter



Product Code	Length	Drive Type
DB-5/16	65mm	5/16
DB-3/8	65mm	3/8
DB-M10	65mm	10mm

Deep Impact Socket



Product Code	Length	Drive Type
DS1638	16mm	3/8
DS1612	16mm	1/2

Phillips Thunderzone Impact Driver



Product Code	Length	Drive Type
DB-PH250	50mm	Phillips No.2
DB-PH2100	100mm	Phillips No.2
DB-PH350	50mm	Phillips No.3

Square Thunderzone Impact Driver



Product Code	Length	Drive Type
DB-SQ250	50mm	No.2 Square
DB-SQ2100	100mm	No.2 Square

Socket Driver for Rod Hangers



Product Code	Qty
DB-RH	Each

SAFETY GEAR (PPE)

Cut Resistant Gloves - Razor X320



Product Code	Size	Qty
CRG/S	Small (7)	Each
CRG/M	Medium (8)	Each
CRG/L	Large (9)	Each
CRG/XL	Extra Large (10)	Each

SAFETY GEAR (PPE)

Face Shield - GMAX+



Product Code	Qty
FS-EPVG	Each

P2 Respirator Mask with Valve



Product Code	Qty
P2RV/12	12

Safety Sun Glasses with Smoke Lens and Black Frame



Product Code	Qty
SG-SUN/BLK	Each

Wraparound Safety Spec, Anti-fog Coating Clear



Product Code	Qty
SG-WAF/CLR	Each

Tuff Nut Hard Hat



Product Code	Colour	Qty
HH/SP	White	Each

Hi-Vis Yellow Day/Night Safety Vest



Product Code	Size	Qty
HVV-YEL/XL	XL	Each

Esko Disposable Earplug - Uncorded



Product Code	Qty
DE200-OU	200

Heat Pump Covers

Choose from our two standard colours of black and white, or custom powdercoat to suit your home. Standard and Vertical Louvered options available. Constructed in durable powdercoated aluminium.



Statement Black



Smart White

AVAILABLE SIZES

Small Cover Dimensions	Height	Width	Depth
External	850mm	1050mm	425mm*
Internal	825mm	1000mm	400mm*

Medium Cover Dimensions	Height	Width	Depth
External	1200mm	1200mm	500mm*
Internal	1175mm	1150mm	475mm*

Large Cover Dimensions	Height	Width	Depth
External	1600mm	1200mm	500mm*
Internal	1575mm	1150mm	475mm*

Vertical Cover Dimensions	Height	Width	Depth
External	1000mm	1050mm	520mm
Internal	975mm	1000mm	495mm

* Additional to depth dimension is an optional 0-120mm of wall bracket adjustment.



Statement Black

Small A/C Cover for Outdoor Unit - Black



Product Code	Colour	External Dimensions
ACC-SML/BL	Black	850 x 1050 x 425mm*

Small A/C Cover for Outdoor Unit - White



Product Code	Colour	External Dimensions
ACC-SML/WH	White	850 x 1050 x 425mm*

Medium A/C Cover for Outdoor Unit - Black



Product Code	Colour	External Dimensions
ACC-MED/BL	Black	1200 x 1200 x 500mm*

Medium A/C Cover for Outdoor Unit - White



Product Code	Colour	External Dimensions
ACC-MED/WH	White	1200 x 1200 x 500mm*

Large A/C Cover for Outdoor Unit - Black



Product Code	Colour	External Dimensions
ACC-LRG/BL	Black	1600 x 1200 x 500mm*

Large A/C Cover for Outdoor Unit - White



Product Code	Colour	External Dimensions
ACC-LRG/WH	White	1600 x 1200 x 500mm*

Vertical Louvered A/C Cover for Outdoor Unit - Black



Product Code	Colour	External Dimensions
ACC-VRT/BL	Black	1000 x 1050 x 520mm

Vertical Louvered A/C Cover for Outdoor Unit - White



Product Code	Colour	External Dimensions
ACC-VRT/WH	White	1000 x 1050 x 520mm

* Additional to depth dimension is an optional 0-120mm of wall bracket adjustment.

Gas Bottle Covers

Standard Black available in a louvered design. Constructed in durable powdercoated aluminium.



ONE SIZE AVAILABLE

Height	Width	Depth
1600mm	1050mm	475mm

Louvered Gas Bottle Cover - Black



Product Code	Colour	External Dimensions
GBC/BL	Black	1600 x 1050 x 475mm



KRONE Covers

Airflow Performance Specification

Our louver design has been independently tested in accordance with the AS 4740:2025 Standards, ensuring our covers achieve the highest possible Class 1 Performance Certification.

CERTIFICATE OF TESTING

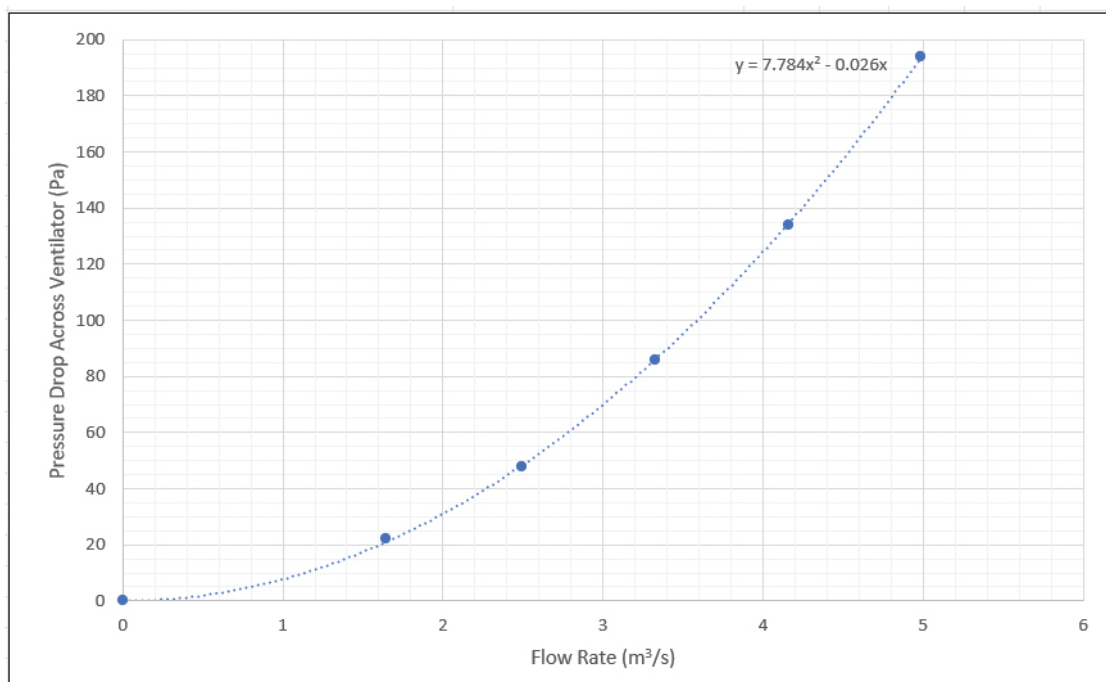
AS 4740:2025 – APPENDIX D – Determination of Discharge Coefficient and Effective Aerodynamic Area

Discharge Coefficient, Cd: 0.829

Performance Level: Class 1

Effective Aerodynamic Area, F (m²) 0.269

Parameter	Unit	Test Run				
		1	2	3	4	5
Pressure Drop Across Ventilator (ΔP)	Pa	22	48	86	134	194
Ventilation Airflow Rate (qv)	m ³ /s	1.64	2.49	3.33	4.16	4.99
Discharge Coefficient (Ci)	-	0.838	0.856	0.856	0.855	0.851
Effective Aerodynamic Area (F)	m ²	0.271	0.276	0.276	0.276	0.275
Performance Classification	Class	1	1	1	1	1





sales@equipsupply.co.nz



0800 378 471



equipsupply.co.nz