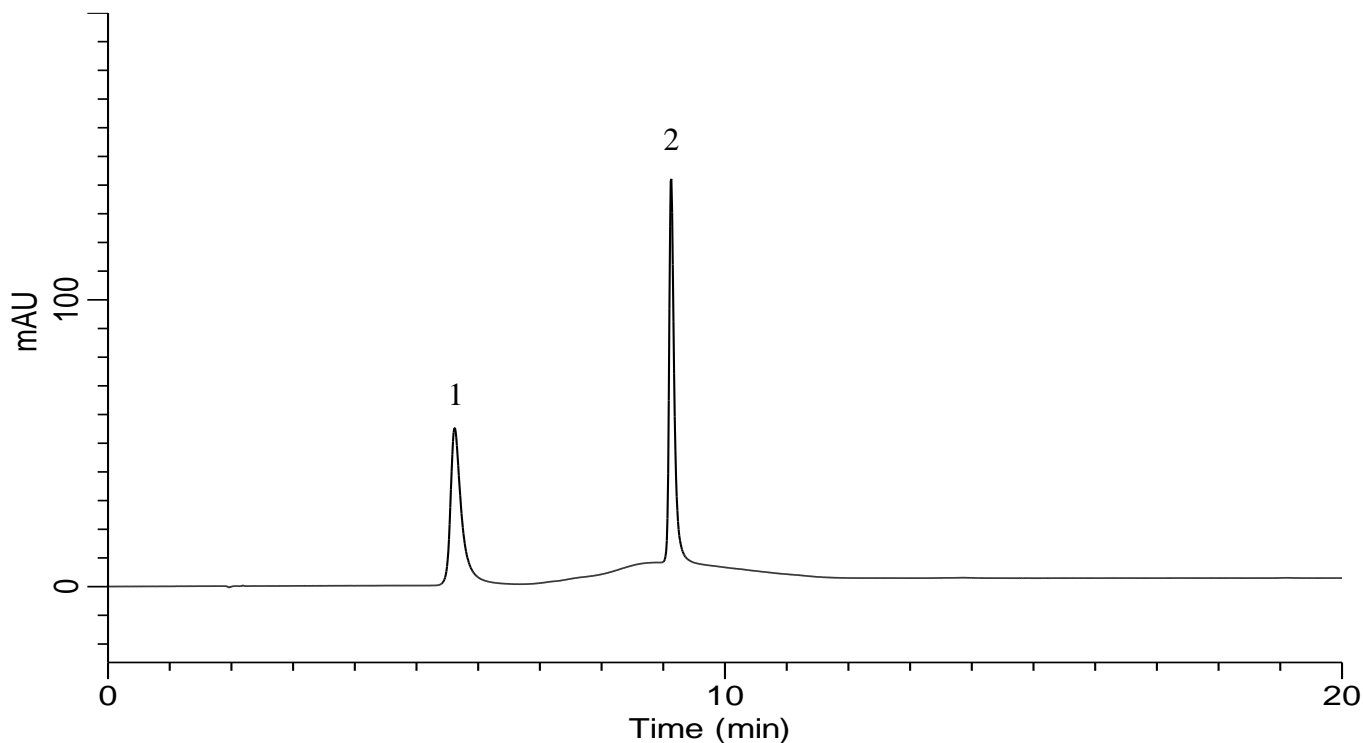


InertSearch for LC

Inertsil Applications

Analysis of Nitrosoamines (NDMA, NDEA)

Data No. LB668-0952



Conditions

System : GL7700 HPLC system
Column : InertSustain PFP (3 μ m HP, 150 x 4.6 mm I.D.)
Column Cat. No. : 5020-87933
Eluent : A) 0.1 % HCOOH, 10 mM HCOONH₄ in CH₃OH
B) 0.1 % HCOOH, 10 mM HCOONH₄ in H₂O

Analyte:

1. NDMA (N-Nitrosodimethylamine)
2. NDEA (N-Nitrosodiethylamine)
100 mg/L each

Time(min)	A (vol%)	B (vol%)
0.0	5	95
3.0	5	95
5.0	50	50
20	50	50
20.1	5	95
35	5	95

Flow rate : 1.00 mL/min
Col. Temp. : 40 °C
Detection : UV 254 nm (UV7751 UV Detector)
Injection Vol. : 5 μ L
Sample : Standard