

# PROTECHNIC

AN ENGELS GROUP COMPANY



Storage and transport bins



Standard and custom cases



Pallets, waste bins  
and pallet boxes

OUR JOINT PROGRAMS SUMMARIZED

# ENGELS

serving logistics and the environment

## HISTORY & COMPANIES

- 1960 Establishment of our company in Tilburg, The Netherlands.**
- 1990 We move to Son, close to Eindhoven, new building.**
- 1997 Start Engels Logistics NV (Be)**
- 2000 Move to Eindhoven, triple our warehouse space to 7.500 m2**
- 2002 We supply 80.000 plastic bins and 2.4 million blisters and seals for introduction of the Euro in Holland and Belgium.**
- 2005 Engels Manutention & Environnement SARL (Fr) is launched.**
- 2006 Start of Engels Logistica e Ambiente Unip (Pt).**
- 2008 Take over of HLC Milieuservice, merged with Engels Logistiek BV.**
- 2008 Start of Engels Behältertechnik GmbH (De) for production of underground containers**
- 2011 Take over Norah Plastics NV, merged with Engels Logistics NV**
- 2012 Engels logistics moves to it's new premises in Beringen.**
- 2013 Establishment of Engels Group NV, to support and manage the Engels Companies.**
- 2020 Engels Group and Engels Logistiek move to Park Forum Eindhoven, close to the airport.**
- 2022 Protechnic Ltd becomes part of the Engels Group**
- 2023 Group turnover passes € 60.000.000 with 160+ staff in 6 countries.**



*Engels Logistiek BV - Engels Group NV*



*Engels Logistics NV*



*Engels Manutention et Environnement SARL*



*Engels Logística e Ambiente, Lda*



*Engels Behältertechnik GmbH*



*Protechnic LTD*

# ENGELS GROUP

AND

**PROTECHNIC**  
CASE SOLVED

This brochure is meant to give you an oversight of the products the Engels Group keeps in store, and to offer a quick resume of what Protechnic can supply.



*Engels bespoke:  
product carrier ASML.*



*Protechnic bespoke:  
military rack case.*

*Protechnic "mass"  
production, Exocases.*



*Engels mass production,  
shipping totes.*

*Group specialty, UN-ap-  
proved containers for the  
transport of dangerous  
goods.*



*Also a Group speci-  
alty, insulated contai-  
ners for the transport  
of delicious goods.*

**All products where we show pri-  
ces are currently kept in our sto-  
re in Nailsea, Bristol.**

**All other products have to be  
shipped to the UK first. For  
availability and correct prices  
see [www.engels.uk](http://www.engels.uk).**



**Protechnic adds its engineering  
capacity to the Engels Group.**



**Protechnic becomes Engels  
custom case producer.**



**Protechnic does the Engels UK  
distribution.**

# WAREHOUSE BINS

## LINBINS STOREFIX™

### Features:

- Constructed from HDPE, a robust and virtually indestructible plastic.
- Temperature resistant ranging from -40°C to 80°C.
- Resistant to oil, grease, and acids.
- Owing to their modern design, they can carry up to 160 kg stacking load (ENBL5).
- Can be placed tightly against each other without gaps between the containers
- Equipped with a hook-on edge, suitable for (mobile) racking systems.



art.nr.	dimensions
EN-7201135	1000 mm



**Engels storage bins, in conjunction with bin racks and trolleys, constitute optimal storage solutions for both the workplace and warehouse environments**

Parts- and storage bins with a semi-open front are stackable, for easy storage while the contents remain accessible.

### STOREFIX™



art.nr.	dimensions	volume
ENBL1-	88x105x54 mm	0,4 l
ENBL2-	167x105x82 mm	1 l
ENBL3-	237x144x123 mm	4,5 l
ENBL4-	345x205x164 mm	12 l
ENBL4D	345x406x164 mm	23 l
ENBL5-	485x298x189 mm	30 l
ENBL6	600x372x250 mm	55 l
ENBL7	700x442x300 mm	92 l



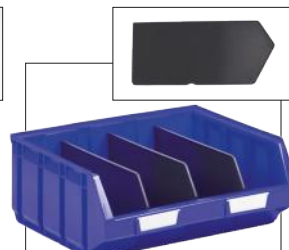
Standard with integrated labeling facility. Labels are included.



Option: Connecting clamp. Only applicable to ENBL6 and ENBL7.



Option: Longitudinal divider, only for ENBL5, ENBL6 and ENBL7.



Option: snap in divider for ENBL4D.

Storebin heavy-duty storage bins will take up to 20 kilos per piece and can be stacked meters high (no need for racking). Their spacious openings guarantee easy order picking.



**STOREBIN™**



art.nr.	dimensions	volume
<b>MBS-403023-04W-7</b>	400x300x230 mm (pick opening: 220x100 mm)	20 l
<b>MBS-604020-04W-7</b>	600x400x200 mm (pick opening: 250x100 mm)	36 l
<b>MBS-604034-04W-7</b>	600x400x340 mm (pick opening: 250x170 mm)	63 l

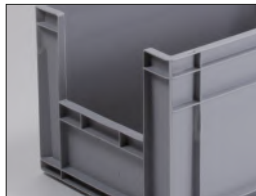
HEAVY LOAD  
**STOREBIN™**

**Features:**

- Euro standard dimensions.
- Made of recycled PP.
- Smooth, straight walls.
- Straight, semi-open front.
- Spacious pick openings.
- Stable stackable.
- High load capacity.
- Reinforced bottom (600x400mm).
- Resistant to temperatures from -15 °C to 90 °C.



The 600x400 mm versions are standard equipped with a grid bottom for extra strength.



Spacious pick opening for easy access to the contents of the bin.

Storebins in stacks or on trolleys offer the ideal solution for compact and mobile storage and provide a quick overview of your stock.



For more information, see our website.



art.nr.	dimensions
<b>80-184-185</b>	800x600x200 mm





# TRANSPORT AND STORAGE BINS

ECO-FRIENDLY  
SUSTAINABLE

**E-LINE  
NORMBOX  
BINS**

**Features (recycle and virgin):**

- **Stable stackable.**
- **Versatile and multi-purpose.**
- **In various base dimensions.**
- **High load-bearing capacity.**
- **Supporting up to 380 kg when stacked.**
- **Comprehensive standard accessories like insert bins, dividers, lids, and dollies. Refer to pages 8 and 9 for more details.**
- **Customization options available, including printing and foam interiors.**



**Standard with smooth bottom**



**Open or closed grips**



**We provide the container with your logo or text by means of hot stamping or screen printing.**

Our E-line Normboxes are moulded from recycled industrial quality PPCop and permanently marked with the displayed imprint on one of their long sides.

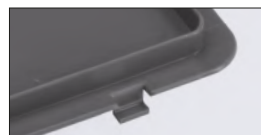


art.nr.		dimensions	volume	grips
EN-4312-1		400x300x120 mm	10 l	closed
EN-4322-1		400x300x220 mm	20 l	closed
EN-6412-1		600x400x120 mm	20 l	closed
EN-6422-1		600x400x220 mm	40 l	closed
EN-6422-2		600x400x220 mm	40 l	open
EN-6432-1		600x400x325 mm	60 l	closed
EN-6432-2		600x400x325 mm	60 l	open
EN-6442-2		600x400x425 mm	90 l	open

Our normboxes can be fitted with different types of lids:



*Hinged lid.*



*Hook in lid.*



*Drip-proof lid with joint.*



*Drop on lid.*

E-line Euronorm Normbox cases are made of strong impact-resistant recycle plastic. Available from stock with hinged lids and snap locks. Optional: hinge reinforcements to secure the lids.



**E-LINE  
NORMBOX CASES™**

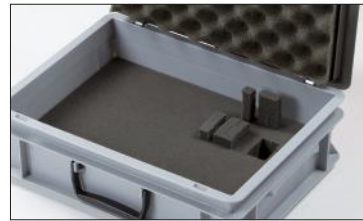
art.nr.		dimensions	volume
ENC-4312-0		400x300x135 mm	10 l
ENC-4322-0		400x300x235 mm	20 l
ENC-6412-0		600x400x135 mm	20 l
ENC-6422-0		600x400x235 mm	40 l
ENC-6432-0		600x400x340 mm	60 l

## TRANSPORT AND STORAGE BINS

ECO-FRIENDLY  
SUSTAINABLE  
**E-LINE  
NORMBOX™**  
CASES



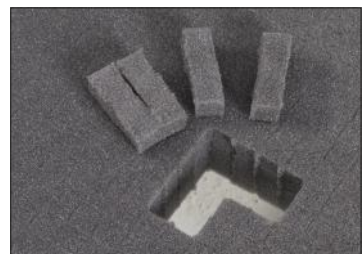
*Easy to close and open thanks to the patented snaplocks.*



*Open cell, 50 mm. perforated pick and pluck foam, easy to customise to perfectly fit your contents.*



**E-LINE NORMBOX CASES™** with sealable lids for (return) transport of parcel scanners at PostNL.



art.nr.	description
<b>S 43-1</b>	foam in lid and bottom 400x300 cases
<b>S 43-2</b>	cubed foam block for 400x300 cases
<b>S 64-1</b>	foam in lid and bottom 600x400 cases
<b>S 64-2</b>	cubed foam block in front 600 x 400 cases

# TRANSPORT AND STORAGE BINS

VIRGIN PLASTIC  
**NORMBOX™**

**Ways to arrange the content of your boxes:**

## INSERTBOXES



*We supply many sizes adapted for 400x300 or 600x400 bins.*

## VACUUM FORMED INTERIORS BESPOKE OR STANDARD



art.nr.	standard versions for 400x300x80 mm
20-2002	10 compartments, foam included
20-2001	14 compartments, foam included
20-2005	24 compartments, foam included

## DIVIDER STRIPS, STANDARD



art.nr.	length 1150, partition 20 mm
M 40.1115	height 40 mm
M 100.1150	height 100 mm
M 180.1150	height 180 mm

**For more options see our web-site [ENGELS.UK](http://ENGELS.UK) "Accessories stackable storage bins".**

These Normbox bins are identical to the E-line Normboxes on the previous pages, but they perform 20% better in drop tests. Additionally, because they are produced from high-quality virgin PPcop, they are foodproof and marked accordingly. When needed, we are happy to supply you the certificate.



art.nr.	dimensions	volume	grip
EN-2112-1-7	200x150x117 mm	2 l	closed
EN-3212-1-7*	300x200x120 mm	5 l	closed
EN-3222-1-7*	300x200x220 mm	9 l	closed
EN-4306-1-7	400x300x60 mm	6 l	closed
EN-4312-1-7	400x300x120 mm	10 l	closed
EN-4317-1-7	400x300x170 mm	15 l	closed
EN-4322-1-7*	400x300x220 mm	20 l	closed
EN-4327-1-7	400x300x270 mm	25 l	closed
EN-4332-1-7*	400x300x325 mm	30 l	closed

\* Also in stock in blue and red, central warehouse



*We offer a diverse, standard and bespoke selection of (mobile) racks for the effortless handling of our bins. More info? Please reach out to us.*



# TRANSPORT AND STORAGE BINS

**BASE  
600X400  
800X600**



**NORMBOX™**

art.nr.	dimensions	volume	grip
EN-6407-1-7	600x400x75 mm	14 l	closed
EN-6412-1-7	600x400x120 mm	20 l	closed
EN-6417-1-7	600x400x170 mm	30 l	closed
EN-6422-1-7*	600x400x220 mm	40 l	closed
EN-6422-2-7*	600x400x220 mm	40 l	open
EN-6428-1-7	600x400x278 mm	53 l	closed
EN-6428-2-7	600x400x278 mm	53 l	open
EN-6432-1-7*	600x400x325 mm	60 l	closed
EN-6432-2-7*	600x400x325 mm	60 l	open
EN-6442-1-7	600x400x425 mm	90 l	closed
EN-8612-1-7	800x600x120 mm	45 l	closed
EN-8622-1-7	800x600x220 mm	90 l	closed
EN-8632-1-7	800x600x325 mm	134 l	closed
EN-8642-1-7	800x600x425 mm	175 l	closed

\* Also in stock in blue and red, central warehouse

## EURO NORM DOLLIES



art.nr.	description
80-184-185	800x600 mm, closed, up to 500 kg
80-954-85	1200x800 mm, closed, up to 500 kg
TR-614116-101S-5	600x400 mm, open, loadable up to 200 kg

VIRGIN PLASTIC  
**NORMBOX™**

Normboxes are a versatile product, they offer more options than you might expect:



*We keep Linbins and Normboxes in store in black conductive plastic. This prevents Electro Static Discharges (ESD) that can damage micro-electronics during their production and storage.*



*On demand, we can produce all our boxes with reinforced bottoms, that will carry up to 50 kilograms without bending. This guarantees secure handling in automated warehouses.*

# PROTECHNIC MOULDED CASES

## STACKABLE **EUROLINE™**

### Features:

- A user-friendly snaplock.
- Stackable design.
- Industrial strength.
- Lightweight and cost-effective.



**Hinge reinforcements**



**Standard handle on long side.**



**Aluminum handle on the short side of 600x400 cases.**

**Euroline cases sized 600x400 are also available in UN approved versions.**



**UN approved.**

We offer stackable Euroline cases in virgin or ecofriendly recycle plastic in a range of sizes. They can be equipped with insertboxes, pick and pluck foam or bespoke vacuum formed interiors. See also the options on pages 6 to 9.



art.nr.	dimensions	volume
<b>ENS-4312-1L</b> ♻️	400x300x135 mm	10 l
<b>ENS-4322-1L</b> ♻️	400x300x235 mm	20 l
<b>ENS-6412-1L</b> ♻️	600x400x135 mm	20 l
<b>ENS-6422-1L</b> ♻️	600x400x235 mm	40 l
<b>ENS-6432-1L</b> ♻️	600x400x340 mm	60 l



art.nr.	dimensions	volume	handle
<b>ENS-3212-1L-7</b>	300x200x133 mm	5 l	1 handle
<b>ENS-3222-1L-7</b>	300x200x235 mm	9 l	1 handle
<b>ENS-4306-1L-7</b>	400x300x80 mm	6 l	1 handle
<b>ENS-4317-1L-7</b>	400x300x185 mm	15 l	1 handle
<b>ENS-4327-1L-7</b>	400x300x287 mm	25 l	1 handle
<b>ENS-6407-1L-7</b>	600x400x90 mm	14 l	1 handle
<b>ENS-6417-1L-7</b>	600x400x185 mm	30 l	1 handle
<b>ENS-6422-2H-7</b>	600x400x235 mm	40 l	2 handles
<b>ENS-6428-2H-7</b>	600x400x290 mm	53 l	2 handles
<b>ENS-6432-2H-7</b>	600x400x340 mm	60 l	2 handles
<b>ENS-6442-2H-7</b>	600x400x440 mm	90 l	2 handles

# PROTECHNIC MOULDED CASES

FROM THE SHELF  
OPTIONS

## Presentation cases



Plastic presentation cases or showcases made of robust PP material. We supply two versions from stock: a lightweight showcase with a protruding handle (KOC series) and a series of more robust cases with an integrated handle (KOA series). They are both completely smooth and available in different sizes.

## Shockproof watertight cases



Our shockproof, waterproof cases provide robust protection against water and dust, boasting an IP67 certification. While they come standard with a block foam interior, we also offer customization options for the foam lining. For pricing and stock availability, please visit our website.

## Watertight Wheeled



For batch quantities we personalise your presentation case with full colour print.



We design and produce your presentation case interior, just as we do with all our other cases.



Shockproof and watertight: designed for extreme conditions.



Phone: +44 01275 8113100

e-mail: [sales@protechnic.com](mailto:sales@protechnic.com)

# PROTECHNIC FABRICATED CASES

## SMARTCASE™

Our Smartcases are in fact "flightcases light" They offer the same flexibility in design but with much sleeker profiles and are a lot easier to carry. The Smart Case is ideally suited to the smaller demonstration case market where cost, weight and aesthetics are key.

**Our digital UV printing facilities and extensive design and CNC machining capability, enable us to configure the Smart case to suit a vast range of applications.**



**All our cases are made from rugged, 7 mm. strong "honeycomb" polypropylene sheet material that we keep in store in several colours. Light, strong, scratch resistant colouring and impact and water resistant.**



**Standard foam interior**



**But also standard: a "smart" multilayer foam interior.**



*Smartcases sleek design, shockproof corners and multicolour prints support your companies public image.*



*Smartcase containing a light drone.*



# PROTECHNIC FABRICATED CASES

## EXOCASE™

Our EXOcase is a further development of the well-known flightcase. The unique "exoskeletal" design ensures maximum protection of its content during storage and transportation. Unlike flightcases, the outer polyurethane corners and ABS profile protection make our EXOcase extremely shockproof and thus fall resistant. Testing for UN approval classification "X" poses no problem for the EXOcase.



*EXOcase panels can be printed in full colour, also in camouflage design, the absolute top in fabricated cases supporting your brand's image.*



**EXOcase lids have standard neoprene joints and provide IP 56 protection.**



**Polyurethane corners and ABS profiles covering the inner structure of a EXOcase absorb shocks.**



**Strong hinges.**



*EXOcase satellite phone charger kit.*



**Secure locks, strong handles**



# PROTECHNIC FABRICATED CASES

## FLIGHTCASES

**Our flightcases have a very strong and highly configurable design. They can be adapted with 19" racks, serve as mobile and shippable warehouses for small parts, or as outer packaging for remote control workspaces.**



**Left: Flat screen packaging.  
Right: Mobile, lockable small parts store.**



**Mobile workspace**

Naturally, we are happy to design and produce your dedicated flightcase. Traditional flight cases are made with a laminated plywood panels that are riveted to the extrusion. While this is strong, we decided to use lightweight open core panels that are bonded to the extrusions allowing us to make the cases with a much cleaner appearance, lighter weight and using far fewer rivets in the construction which gives us a build time advantage over plywood flight cases.



*Flightcases, very much suited for logistic solutions like stackable packaging of bulky products.*



*Besides options like coloured and/or printed panels made of rugged honeycomb plastic, we also supply black extrusions and grips as a standard option as opposed to most flightcase builders that only offer aluminum finishes.*

# PROTECHNIC FABRICATED CASES

## INTEGRATED SOLUTIONS



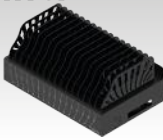
Sometimes one of our bespoke solutions becomes so popular it develops into a standard productline. This goes for our Multipad series, mobile charging and synchronising units for tablets, mostly used in schools. Our multipad range comes in custom colours.

### **MULTIPAD JUICE IT™**



Our "Juiceit" range comes in two standard sizes, 8 port and 16 port versions. Lockable, easy to carry, comes with either removable basket or fixed divider.

### **MULTIPAD DESKTOP™**



Charging and synchronizing 16 tablets on your desk.

### **MULTIPAD SYNC IT™**



The "Syncit" range comes with either usb3 or usbc charging ports with Led lights that show the charging status for each port, its Lockable, easy to carry, comes with either removable basket or fixed dividerfoam.

### **MULTIPAD TROLLEY SYSTEM™**



Trolley systems are available in 32 and 48 port charging versions.

**At Protechnic, we integrate case building with electronics. On this page we show you some examples of our craftsmanship.**



**Mobile lockable exocase with 19"rack.**



**Smartcase equipped with electrical power supply.**



**Electronic equipment with smartcase as housing.**

# FOOD AND CATERING

## VENTILATED STACKING BINS **PERFOBOX™**

### Features:

- Made of virgin PPcop.
- Foodproof.
- High stacking load.
- Perforated walls and bottom to facilitate air circulation during cooling or freezing.
- Customizable with reinforced bottom and closed wall variations upon request.



**Dividers, (40, 24 or 15 compartments) can be found on our website.**



**Boxes offer two print areas**

Drop on lid



art.nr.	dimensions
EN-43-0-7	400x300 mm
EN-64-0-7	600x400 mm

Perforated bins are widely used in the food world, like bakeries, caterers and markets.



art.nr.	dimensions	volume	grip
EF 4312	400x300x120 mm	11 l	closed
EF 4317	400x300x170 mm	16 l	closed
EF 4322	400x300x220 mm	21 l	closed
EF 4332	400x300x320 mm	31 l	closed
EF 6407	600x400x70 mm	12 l	closed
EF 6409	600x400x90 mm	18 l	closed
EF 6413	600x400x130 mm	24 l	open
EF 6415	600x400x150 mm	29 l	open
EF 6417	600x400x170 mm	33 l	open
EF 6420	600x400x200 mm	40 l	open
EF 6422	600x400x220 mm	42 l	open
EF 6424	600x400x240 mm	47 l	open
EF 6426	600x400x260 mm	52 l	open
EF 6432	600x400x320 mm	64 l	open
EF 6435	600x400x350 mm	71 l	open
EF 6441	600x400x410 mm	82 l	open



*Our EF 4322 is also often used as a bicycle crate. On request also with one side closed to carry your promotion.*

# FOOD AND CATERING

## DELIVERY BOXES



Our new, 92 litres top loading delivery box

We offer the home delivery industry two versions of bicycle containers:

- Classic, rugged rotation moulded versions with front opening.
- New design, injection moulded, top loading with removable side panels for easy personalization.



New design deliverybox

art.nr.	dimensions lxbxh, volume	weight	price p.p
<b>FDM-092.555</b>	540x570x370 mm, 92 ltr	7,2 kg	£ 92,15

Classic deliverybox, single walled



art.nr.	dimensions lxbxh, volume	weight
<b>90509 SB60</b>	422x422x422 mm, 60 ltr	7 kg
<b>9059-85BDB85</b>	570x550x335 mm, 85 ltr	4,8 kg
<b>90509-SB120</b>	570x530x440 mm, 120 ltr	6,8 kg

Classic delivery-box, insulated (inner and outer wall, foam in between)



art.nr.	dimensions lxbxh, volume	weight
<b>90509-FDB90</b>	560x520x440 mm, 90 ltr	12 kg

For easy assembly: fix the plate to the bicycle, mount the box on it.

mounting plate, plastic





# AGRICULTURE

## INSECTFARMING TULIP AND LILYCRATES

We produce/supply a variety of crates specially designed for use in agriculture. Lightweight, strong, ventilated with reinforced bottoms, made in large quantities, quite affordable. So they often find their use in other applications as well. Made of polyethylene, thus cold resistant for use outside in the field.



Crates, especially designed for export of bulbs, but also for rearing of tulips.

Seed potato export  
crate



art.nr.	dimensions lwxhx, volume	volume
90286-426-1	600x400x262 mm, 90 ltr	55 ltr
90356-1	sealing cover grille	

The crate above can hold 30 kilo of seed potatoes. The cover carries information (grower, variety, batch) and helps preventing theft of the valuable content.

Lid closure



art.nr.	dimensions lwxhx	
SBE-64190-220-9	600x400x180/160 mm	tulipcrate
SBE-64230-S20T	600X400X230/210 mm	lilycrate

Insect breeding and farming becomes more and more accepted and knows a strong growth. Below we present our insect breeding crate. Strong bottom, stable stacking pillars, adapted for automated handling.

Insect breeding and  
farming crate



art.nr.	dimensions lwxhx	
IBB-64190-021-9	600X400X180 mm	insect breeding and farming crate



# AGRICULTURE RETAIL

## COLLAPSIBLE CRATES



*from field to market*

We have two families of collapsible crates in our program: with and without active lock. The first we keep in store, colour blue. The other we supply, often in green, projectwise mostly to agriculture.

Advantage of crates with locks: folding and unfolding go fast and easy. Disadvantage: grit and soil in the field can hinder the mechanism.



### **FOLDCRATE™**

art.nr.	dimensions l x w x h	volume
<b>VBE-43170-131W-5</b>	400x300x170, flat 40 mm	15 ltr
<b>VBE-64122-131W-5</b>	600x400x122, flat 40 mm	20 ltr
<b>VBE-64172-131W-5</b>	600x400x172, flat 40mm	30 ltr
<b>VBE-64202-131W-5</b>	600x400x202, flat 40mm	40 ltr
<b>VBE-64230-131W-5</b>	600x400x230, flat 45 mm	43 ltr

### Features of both series:

- Foodproof.
- High stacking load.
- All sides have grips and label-holders.
- Perforated walls and bottom.
- Perfect saving of space when flat (only 40 mm high).

### **AGRI FOLDCRATE™**



art.nr.	dimensions l x w x h	volume
<b>VBE-64180-131W-6</b>	600x400x180 mm	36 ltr
<b>VBE-64200-131W-6</b>	600x400x122 mm	40 ltr
<b>VBE-64220-131W-6</b>	600x400x172 mm	45 ltr



Phone: +44 01275 8113100

e-mail: sales@protechnic.com

# DISTRIBUTION BINS

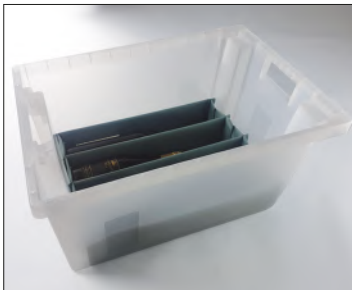
## STACK NEST BINS **TURNBIN™**

### Features:

- Stacking by turning 180°.
- Compatible with roller conveyors due to its smooth base.
- Also perfect for internal transport.
- Open grips for easy handling.
- Customization options available like printing or barcode labeling.



art.nr.	dimensions outside	dimensions inside	volume
<b>SN-6415.500</b>	600x400x150 mm	490x332x145 mm	25 l
<b>SN-6420.500</b>	600x400x200 mm	490x332x195 mm	35 l
<b>SN-6430.500</b>	600x400x300 mm	490x332x295 mm	50 l
<b>SN-6440.500</b>	600x400x400 mm	490x332x395 mm	70 l



**special:** Equipped with a leak-proof wine bottle carrier (customer request).

### Universal drop on lid



art.nr.	dimensions
<b>SND-64-0.700</b>	600x400 mm



Bins with reinforced bottoms on a distribution system for E-fulfilment.

# DISTRIBUTION BINS

## BALE ARM BINS **SWINGBOX™**

Swingbox, probably the most clever and versatile stacking bar (bale arm) container system. All bins can be supplied with closed or (partially) perforated walls and bottoms. Also with open front, for easy shelf stocking or pop up store building.



size - volume	walls closed bottom closed	walls perforated bottom closed	walls perforated bottom perforated
400x300x131 mm 12 ltr	art.nr. 5016-7	art.nr. 5017-7	art.nr. 5015-7
600x400x163 mm 30 ltr	art.nr. 5036-7	art.nr. 5037-7	art.nr. 5035-7
600x400x273 mm 45 ltr	art.nr. 5046-7	art.nr. 5047-7	art.nr. 5045-7
600x400x310 mm 60 ltr	art.nr. 5066-7	art.nr. 5067-7	art.nr. 5065-7

### Features:

- High efficiency. Although nestable when empty, the inside dimensions are competitive compared to a stackable box.
- Ergonomic, stacking bars are easy to grip, and stacking and nesting go in one move.
- Very stable, easy stacking, also on higher loaded pallets. One bin can be put on the other without looking for the exact position.
- The concept allows for many variations: combinations of open, perforated or closed walls and bottoms, prints, barcodes.
- Very strong because of the use of high end prime material: HDPE.



The stacking bar is also used as handle, this saves space as there is no need for grips. The inside dimensions, measured at the bottom of our Swingbox series are identical to those of our stackable Normbox: 557x357 mm.



**Versions with open front. Ship, store, orderpick with one bin!**



**Sealable lid.**



Phone: +44 01275 8113100

e-mail: sales@protechnic.com


# TRANSPORT- AND STORAGE BINS

## ATTACHED LID CONTAINERS **DISTRIBOX™**

### Features:

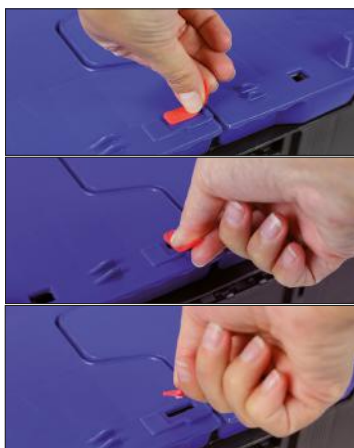
- **Lightweight and stable.**
- **Nestable and stackable.**
- **Flat sides and flat ends (to be placed against each other on a roller conveyor).**
- **Provided with openings for water drainage (cleaning).**
- **Indentations for label holders.**
- **Ribbed label fields.**

Nestable bins are the sustainable alternative to cardboard boxes. Ideal for transporting your products between stores, distribution centers, or wholesalers.




**E-LINE DISTRIBOX™**

art.nr.	dimensions	volume
<b>DBE-6432-014W-</b> ♻️	600x400x320 mm	55 l
<b>DBE-6436-014W-</b> ♻️	600x400x365 mm	63 l
<b>DBE-6441-014W-</b> ♻️	600x400x416 mm	72 l



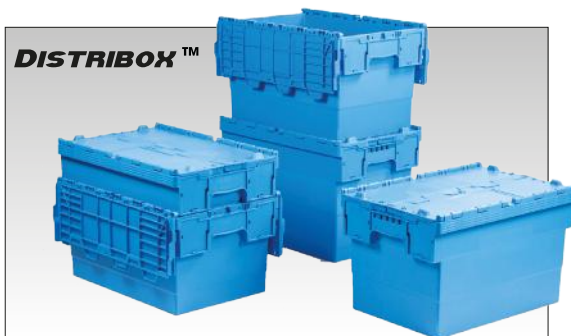
**Our distribution bins are perfectly sealable.**

**Seals**



art.nr.	description
<b>DBS01-1</b>	Insert seal, red or yellow
<b>DBS01-3</b>	

The above variants are made from recycled PP. The variants below are the same bins but made from new material (PP), resulting in a higher load capacity.



**DISTRIBOX™**

art.nr.	dimensions	volume
<b>DBE-6432-014W-55</b>	600x400x320 mm	55 l
<b>DBE-6436-014W-55</b>	600x400x365 mm	63 l
<b>DBE-6441-014W-55</b>	600x400x416 mm	72 l

# DISTRIBUTION BINS

ATTACHED LID  
CONTAINERS

**DISTRIBOX HD™**

Our heavy duty Distributions come in two versions, E-line and Virgin foodproof. What makes them special:

- Strong hinges with pins, embedded in a double walled container top.
- Impact resistant walls. They easily survive drop-tests for ADR approval.

## E-LINE DISTRIBOX HD™



art.nr.	dimensions	volume
6103-00-	600x400x275 mm	45 l
6107-00-	600x400x320 mm	52 l



**Easy opening and closing**



**Label holder and ergonomic grip.**

## DISTRIBOX HD™



Art.-Nr.	dimensions	volume
5105-05-834	400x300x275 mm	20 l.
5102-05-834	500x300x274 mm	25 l.
5103-05-834	600x400x275 mm	45 l.
5107-05-834	600x400x320 mm	52 l.
5100-05-834	600x400x374 mm	60 l.



art.nr.	description
5121	HD distributions security sealing pin 1000 pcs



art.nr.	description
5100-UN-X-DOOS	UN approved distributions locking strip, obliged during transport, 2500 pcs

**All Heavy Duty Distributions are available in UN approved version.**



# HIGH VOLUME BINS

## WITH AND WITHOUT WHEELS **CLASSIC**

High volume bins are ideal for bulk storage and internal transportation of products. Available in various designs.

### Features:

- Constructed from robust, food-safe, frost- and chemical-resistant plastic (HDPE).
- Perfectly stackable, with or without lids or wheels.
- Specially designed for handling with forklifts and pallet trucks.



**Personalisation through print.**



**Please refer to our website for prices and dimensions.**



art.nr.	dimensions
<b>1400/A</b>	1040x640x580 mm
<b>1400/AR</b>	1040x640x700 mm

### **CLASSIC** On four feet



art.nr.	dimensions lwxwxh	volume
<b>1425/F</b>	1040x640x550 mm	200 l
<b>1425/B</b>	1040x640x670 mm	285 l
<b>1425/C</b>	1030x600x840 mm	400 l
<b>1425/A</b>	1200x800x800 mm	550 l

### **CLASSIC** On 4 wheels



art.nr.	dimensions lwxwxh	volume
<b>1425/FR</b>	1040x640x670 mm	200 l
<b>1425/BR</b>	1040x640x790 mm	285 l
<b>1425/CR</b>	1030x600x960 mm	400 l
<b>1425/AR</b>	1200x800x940 mm	550 l

# PALLETBOXEN

E-LINE OR VIRGIN  
PLASTIC  
**PALOX™**

Engels industrial pallet boxes are manufactured from HDPE. Food-safe versions are available in blue, red, green, and grey. The black variant is made of recycled material.



art.nr.	dimensions lwxhxh	volume	version
<b>PB-121076-0F00-7</b> ♻️	1200x100x760 mm	610 l	3 skids
<b>PB-121076-0F30-9</b> ♻️	1200x100x760 mm	610 l	3 skids
<b>PB-121076-0400-</b> ♻️	1200x100x760 mm	610 l	4 feet
<b>PB-121076-0430-9</b> ♻️	1200x100x760 mm	610 l	4 feet



art.nr.	description
<b>PB-121076-UN-ML</b>	UN-pallet box E-line without fall-through lintels, 1200x1000x795 mm, 610 litres, stainless steel hinges, triangle lock with key.

UN-approved pallet boxes are permitted for the transport of solid and pasty hazardous substances. They are equipped with lockable hinged lids. More information can be found on our website.

## Features:

- Manufactured from virtually unbreakable plastic (HDPE).
- Suitable for use in refrigeration and deep-freeze cells.
- Available in food grade or recycled material.
- Hygienic design.
- Weather and UV resistant.
- Loadable up to 4500 kg in stack.
- Equipped with drainage facilities on request.



Space for label/logo/tracking on each side.

## Drop-on lid.



art.nr.	volume
<b>PBD-1210-D008-7</b>	1200x1000 mm

# PALLETS

MOST SOLD  
**EURONEST™**  
**MEPAL™**  
**HYPAL™**

Our pallet range is considerably more extensive than depicted on this page. We display some 'bestsellers' that we keep in stock. View more pallets on our website or contact our Sales department.



## **EURONEST** Export Pallets

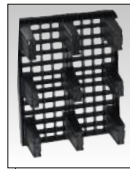
For cost-effective transportation and compact storage (nestable). Made from PO material for single use and PE material for multiple uses. We supply different versions, optionally with skids for use in racking systems.

## **MEPAL** Industrial Pallets

Medium duty and heavy duty, depending on the required load capacity. Broadly applicable and customizable to your wishes and needs.

## **HYPAL** Hygiene Pallets

Top and bottom completely smooth, without cracks or seams. Easy to clean. We supply both open and closed deck versions. Optionally reinforced with steel interior bars.



### Export pallets

art.nr.	description	load capacity
NP-120815-17MP-9	1200x800x130 mm, open deck with stacking rim, 9 feet, 6.5 kg, black	stat.: < 1600 kg dyn.: < 1000 kg
NP-121015-17MP-9	1200x1000x140 mm, open deck with stacking rim, 9 feet, 10.5 kg, black	stat.: < 4000 kg dyn.: < 1400 kg



### Industrial pallets

art.nr.	description	load capacity
Mepal 1208	1200x800x150 mm, PP-R, open deck* with stacking rim, 2 skids, 11.5 kg, anthracite	stat.: < 3000 kg dyn.: < 1000 kg rack.: < 400 kg
Mepal 1210	1200x1000x150 mm, PP-R, open deck* with stacking rim, 3 skids, 15 kg, anthracite	stat.: < 3000 kg dyn.: < 1000 kg rack.: < 400 kg

\*Also available from stock with a closed deck.



### Hygiene Pallets

art.nr.	description	load capacity
Hypal 1208	1200x800x153 mm, HDPE-R*, closed deck with stacking rim, 3 skids, 18 kg, black	stat.: < 4800 kg dyn.: < 1200 kg rack.: < 750 kg
Hypal 1210	1200x1000x160 mm, HDPE-R*, closed deck with stacking rim, 3 skids, 23 kg, black	stat.: < 5000 kg dyn.: < 1250 kg rack.: < 750 kg

\*Also available from stock in HDPE virgin material.

Below are some examples of project-based deliveries of waste containers.



*We supply 100.000 's of wheely bins per year, often through rewarded tenders.*



*Engels steel/concrete semi underground 5000 litre waste containers, very resilient, often used in mountain areas (photo French alps).*



*Also Engels: underground waste containers, smartly fitting in nowadays cityscape (photo Brussels).*

## ALSO SPECIALIST IN WASTE COLLECTING PRODUCTS

**Engels was founded in 1960, and in 1972 the Club of Rome published its then famous report "The limits to growth" that proved the finiteness of our resources. It made a big impression and our companies first large projects were in waste collection and recycling:**



**Child-secure box for storage and collection of chemical household waste. Millions are in use in The Netherlands and Scandinavia.**



**Kerbside collection baskets. These were often the start of recycling schemes. Since the nineties we supplied millions in the UK, Belgium, France and the Netherlands.**

# WASTE SEPERATING

## BASKETS **ECOMODULE™**



**Our modular waste seperating system.**

Ecomodules are concieved for waste sorting, allowing the user the choise what fractions he wishes to separate. Elements of 40 litre are stackable to save valuable floorspace. They may be topped with 2 elements of 18 litre. Lids and sack-holders allow for less frequent collection.



art.nr.	description
<b>902-QUATROM.9777</b>	400x300x1050 mm office module 4 waste fractions
<b>902-OFFICE+.997</b>	400x300x350 mm office module 2 waste fractions

Our stackable design baskets allow for easy separating.



**Often ecomodules are used in offices.**



art.nr.	dimensions	volume	
<b>PS-325G-1.50</b>	490x300x385 mm	32 l	closed version
<b>PS-325G.50</b>	490x300x385 mm	32 l	closed version with open front
<b>PS-325P-1.50</b>	490x300x385 mm	32 l	perforated version
<b>PS-325P.50</b>	490x300x385 mm	32 l	perforated version with open front



**Personalisation supports your recycling effort!**



### Moulded separation units



We keep rotation moulded waste 2, 3, 4 fraction units in stock. Dimensions and colours are fixed, logo's and texts are applied in consultation with the customer. These are our most economic solution.

### Fabricated separation units



We also fabricate units, where we offer our customers more choices. They consist of steel housings with recycled plastic top. Doors are an option.

The units contain 60 alt. 80 litre buckets or wastebag clamps that you slide out through their front. Easier handling!

### Vigipirate options



Own assembly makes a lot possible. In many high risk areas, like airports or the entrances of the Chunnel, transparency is a must.



**Our standard moulded units contain 50 ltr buckets that you take out through the top.**



### Features:

- **2 to 5 fractions.**
- **Wheels, feet or pedestal.**
- **With or without (transparent) doors.**



**Fraction inserts are laser cut.**

# WASTE COLLECTION

## WHEELIE BINS PLASTIC

Standard 2-wheel and 4-wheel containers are available in 5 (and often more) colours directly from stock. For colour combinations and accessories such as special lids, we require between one and two weeks' delivery time due to assembly.

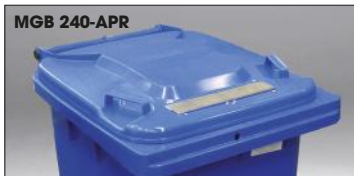


**Various locks for secure locking of the container.**

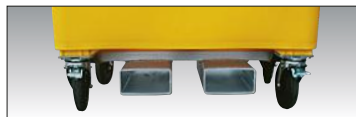
MGB 240-APG



MGB 240-APR



**Various lid types for confidential paper collection.**



**Forklift pick-up, for quick transport and easy emptying.**



**Coupling system to facilitate transport of containers.**



art.nr.	description
MGB 120.	480x550x940 mm, 120 l, lid with 2 handles
MGB 240.	580x740x1070 mm, 240 l, lid with 2 handles



art.nr.	description
MGB 660.	1210x765x1210 mm, 660 l, lid with 3 handles, 2 brakes, KAM and DIN fittings
MGB 770.	1371x779x1316 mm, 770 l, lid with 3 handles, 2 brakes, KAM and DIN fittings
MGB 1000L.	1370x1085x1315 mm, 1000 l, lid with 3 handles, 2 brakes, KAM and DIN fittings

# WASTE COLLECTION

## WHEELIE BINS STEEL

Steel 2-wheel and 4-wheel waste containers meet the same EN standard as plastic wheelie bins and have the same capacity dimensions. Steel containers are fire- and flame-retardant and suitable for heavy loads. They are also used when working with solvents that react with plastic such as thinner or white spirit.



art.nr.	description
<b>MGBS 120</b>	490x560x960 mm, 120 l, steel, lid with 2 handles
<b>MGBS 240</b>	580x740x1070 mm, 240 l, steel, lid with 2 handles



**Large stock.**



**Our 4-wheel containers feature KAM and DIN pick-up.**



art.nr.	description
<b>ACS 660</b>	1370x780x1245 mm, 660 l, steel, lid with 1 handle, 2 brakes, KAM and DIN fittings
<b>ACS 770</b>	1370x780x1370 mm, 770 l, steel, lid with 1 handle, 2 brakes, KAM and DIN fittings
<b>ACS 1000</b>	1370x970x1430 mm, 1100 l, steel, lid with 1 handle, 2 brakes, KAM and DIN fittings



art.nr.	description
<b>MGBS 1100.</b> <b>000-KS</b>	1360x1070x1470 mm, 1100 l, steel, with childproof domed roller cover, DIN fitting, 2 braked castors



This brochure shows you some of Protechnic and Engels Group bestselling products. At the moment we are building up our stock in Nailsee, UK products are priced. All other products take some extra time for shipping or fabricating.

Prices: VAT excluded  
 Availability: See [www.engels.uk](http://www.engels.uk)  
 Delivery: DDP mainland UK. For orders less than £ 100,00 we charge £ 15,00 freight cost.  
 Guarantee: Up to 1 year after delivery date. Covers transport damage and manufacturing defects.

**TRANSPORT AND STORAGE BINS**



**FABRICATED AND MOULDED CASES**



**WASTEBINS AND CONTAINERS**

Protechnic and Engels value quality, see certificate below.



**United Kingdom  
 Protechnic Ltd**

Unit 1, West End Trading Est.  
 Blackfriars Road  
 BS48 4DJ NAILSEA, BRISTOL

Tel.: +44 (0)127 58 11 310  
 E-mail: [sales@protechnic.com](mailto:sales@protechnic.com)  
 Sites: [www.protechnic.com](http://www.protechnic.com) [www.engels.uk](http://www.engels.uk)



**Protechnic Ltd is part of the Engels Group NV, a family business founded in 1960. We think in generations rather than short term profit.**

**Strong multi-use product packaging and clever waste collecting save valuable resources, this we express in our slogan "serving logistics and the environment"**

**At the moment we realize £ 51 million turnover with 160 employees in 6 companies.**



**ENGELS**  
 serving logistics and the environment.

**Engels Group NV  
 Park Forum 1139 5657 HK  
 EINDHOVEN The Netherlands**