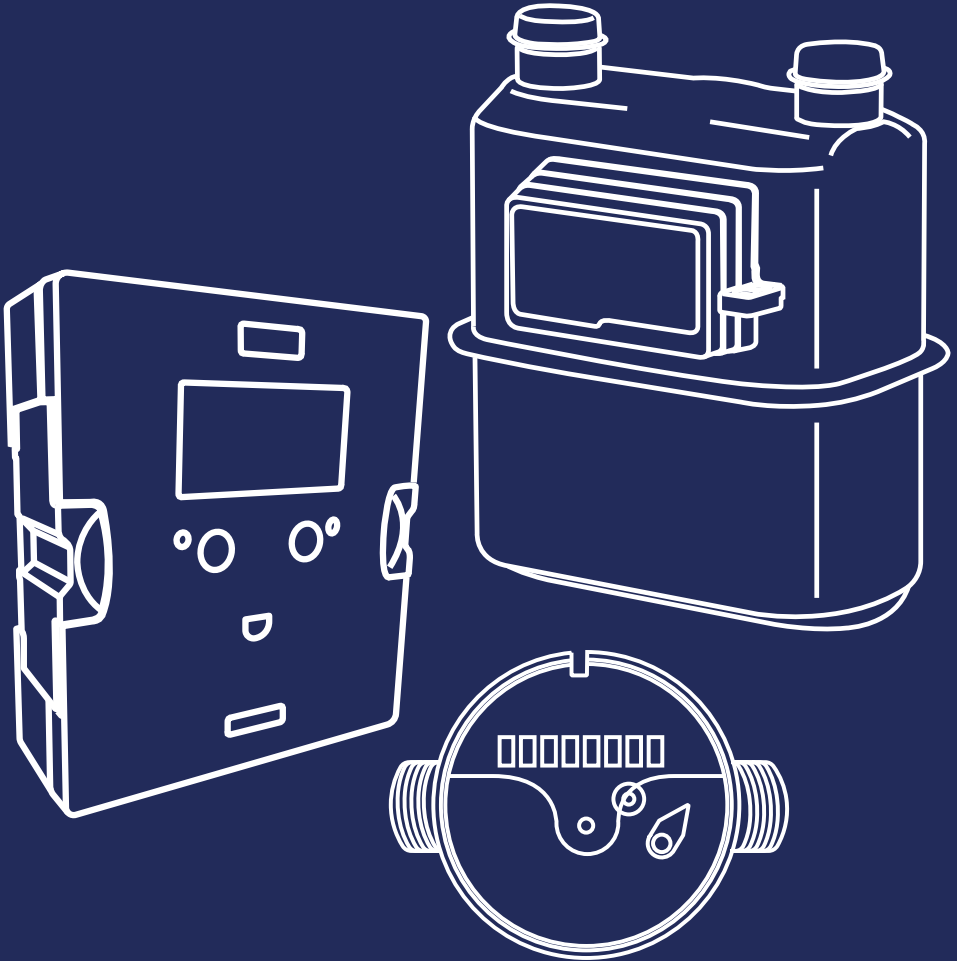


# DMS METERING SOLUTIONS



The Ultimate Guide to  
**Metering Solutions**

# Our Brands



**BRYAN  
DONKIN**



**DMS**  
METERING  
SOLUTIONS



**elvaco**



**GWF**

**Honeywell**



**S&S**  
NORTHERN

**SIEMENS**



# Welcome to the DMS Ultimate Guide to Metering Solutions

## About Us

DMS Metering Solutions stands as an autonomous provider of metering and control solutions, primarily serving the Building Services, District Heating, Renewables, Utility, and Distribution sectors. With a history spanning over two decades, we boast a solid reputation for exceptional customer service and support. Situated centrally in Nottingham, DMS extends its services nationwide, offering a comprehensive range of solutions unparalleled in the industry. Our commitment revolves around delivering top-tier products and services, backed by onsite technical assistance, training, and commissioning. We uphold a business philosophy centered on selecting and supplying only the highest quality, cutting-edge products and services, many of which are exclusive to DMS within the UK.

## Even more information is available on our website

Visit our website to discover the latest products, access datasheets, keep updated with industry and company news and events.



## Scan QR code to visit website

## Follow us on:



LinkedIn:



YouTube:



# Accreditations & Affiliations



This accreditation demonstrates our strong performance and compliance with industry standards, reassuring our clients of our reliability, transparency, and efficiency in delivering projects and services.



As a holder of ISO9001 certification, we adhere to internationally recognized standards for quality management systems, ensuring consistent delivery of high-quality products and services that meet customer requirements and regulatory standards.



Being accredited by the Chartered Institution of Building Services Engineers (CIBSE) as a CPD provider reflects our commitment to continuous professional development and knowledge sharing within the industry.



Membership in the Building Controls Industry Association (BCIA) underscores our expertise in building controls and automation, as well as our dedication to promoting best practices and driving innovation in the industry.



This accreditation recognizes our robust prequalification processes, financial stability, and commitment to health and safety, streamlining procurement processes for our clients and demonstrating our credibility as a supplier.



As a member of EUA, we contribute to shaping policies and driving advancements in the energy and utilities sector, enabling us to stay informed of industry trends and best practices to better serve our clients.



Proud to be awarded the Prestigious Honeywell Channel partner of the year for Northern Europe once again! We also hold Platinum Partner, meaning we are able to offer you the highest level of service for the range.



Being part of UKDEA allows us to collaborate with industry peers, share knowledge, and drive innovation in district energy systems, supporting our mission to deliver sustainable and efficient energy solutions.



Membership in the East Midlands Chamber strengthens our regional presence and provides valuable networking opportunities, enabling us to engage with local businesses, support economic growth, and contribute to our community.

For more information about our accreditations and how we can support your projects, please browse through our catalogue or contact us directly.

# About DMS Metering Solutions

## Business Integrity

At all times, we conduct our business in an honest, fair, safe and professional manner. We find that this approach nurtures loyalty, continuity and sustainability whilst strengthening relationships with our customers, suppliers and employees.



## Brand Exclusives

Throughout our years we have developed and maintained business relationships with key leaders within the industry, this has led to Brand Exclusivities such as: Sontex SA, Apator PoWogaz SA. We also hold partner level with leaders including Platinum status with Honeywell, Professional Partner to Elvaco and Danfoss. And distributor for Coster, S&S Northern, Siemens, Endress and Hauser, Micronics and many more.

## Technical Support

Our sales and technical support team are available to help you make the right selection for each individual project. Offering a quick turnaround on quotations.



## CIBSE Approved CPD training

DMS offer CIBSE Approved CPD training.

In our single certified CPD session, we have 2 options available:

- Heat Metering Technology  
Selection and getting it right first time.
- Understanding Meter Data Collection.

Both courses contribute to your continued learning development and are delivered by our technical experts. Organise your session today, whether it be online or in person.

Book your place by scanning the QR code.



## Customer Partnership

At DMS, nurturing robust relationships with our customers is at the core of our ethos. We believe that every project starts with gaining a thorough understanding of our clients and their unique dynamics. This ensures that we grasp the intricacies of the project completely, enabling us to provide the most suitable solutions tailored to their needs.

## Lunch n Learn training

Since its inception in 2014, our Lunch n Learn sessions have evolved significantly. Initially focusing on a 4-hour session exclusively dedicated to our range of Sontex Heat Meters, we've expanded our offerings over the past decade. Today, we provide sessions covering our entire product line. What sets our sessions apart is their bespoke nature. Tailored specifically to your needs, each session is designed to address your requirements comprehensively. Held at our offices in Nottingham, we ensure that your experience includes not only valuable insights but also a tasty lunch. Moreover, for those unable to attend in person, we offer online sessions or alternative locations upon consultation with our team.

Book your place by scanning the QR code.



## Environmental

In today's swiftly changing landscape, sustainability has emerged as a paramount concern across various industries. We're collectively striving to take greater strides towards a greener future. Businesses are increasingly focused on implementing more efficient resource management strategies, particularly in renewable energy, to minimize their environmental footprint. Metering plays a crucial role in this endeavor by facilitating precise measurement, optimizing resource utilization, and reducing waste.

At DMS Metering, we are committed to integrating sustainability into our operations. This commitment is evident in our premises, where we've installed a heat pump and recently added EV charging points and occupancy sensors throughout the building. These initiatives not only create a greener workspace for our employees and visitors but also align with our dedication to environmental responsibility. Additionally, we've made significant efforts to reduce paper usage within our organization.

Continuously seeking innovative ways to lessen our environmental impact, we are selective in our choices of suppliers and materials. Our commitment to sustainability extends beyond words, reflecting in both our actions and partnerships.

# Product Highlights

We've added more quality products to our metering and controls range. This is just a small selection of the new ranges we have introduced

## Sontex Supercom P Pulse-Radio Converter

Page 20

The LoRaWAN® pulse-radio converter Supercom P is suitable for remote reading of measuring devices of all kinds of supply types of measuring instruments



## Norax3 Three-Phase Electric Meter



A three-phase meter, the Norax3 is also capable of measuring single phase circuits up to 100A



Page 89

## Apator Powogaz JS Eco Water Meter

The Smart series single-jet vane-wheel dry water meters, featuring composite bodies, are designed for accurate water consumption measurement.



Page 32



## Elvaco Edge:

A pioneering world's First Fully Connected M-Bus Gateway that supports both wired and wireless meters with best-in-class.

elvaco

Page 92



## LX Stainless Steel Turbine Flow Meters

Lx Turbine Meters are designed for a wide range of specialist applications, featuring robust stainless steel construction that resists corrosion from various chemical solutions.



Page 77

## AB-QM Valves

The AB-QM Valves are Flow Limiting Valves used on Heating Systems in order to provide efficient control of the flow and temperature.



Page 108



# Contents

Heating & Cooling 08-23

DMS METERING SOLUTIONS

Santex

Danfoss



Water

24-41

DMS METERING SOLUTIONS

APATOR PDWIGAZ

Honeywell



Gas

42-69

DMS METERING SOLUTIONS

Honeywell

metreg

DRESSER

MeterFit

SSS



## We make ordering easy

We try to make contacting us for enquiries and ordering as easy as possible.

Sales office open

Monday to Thursday - 8:30am till 5:00pm

Friday - 8:30am till 4:30pm

+44 (0)1773 534 555

meters@dmsltd.com

www.dmsltd.com

## Delivery Options

Next day delivery available on all ex-stock items when ordered before 3pm

## Payment options

DMS credit account

Credit/Debit Card/Bank Transfer



Specialist/Process 79-81

AQUAMETRO

SIEMENS

Endress+Hauser



Electric

82-91

APATOR

emlite

Eastron

EUROPE



Data Collection 92-101

elvaco



Valves

102-108

GOLD SEAL

Danfoss

costeogroup

PERSONAL AUTOMATION



Glossary, Approvals, Conversion Charts 109

# The future of energy metering is here

## Sontex Supercal 5



### Simple. Versatile. Robust

The **Supercal 5** incorporates state-of-the-art technology, this next generation calculator boasts many future proof features, all set within a user-friendly interface. Features include configuration via NFC interface, modular concept with 2 card slots, several tariffs and... LoRaWAN! It can also be supplied with Wireless M-Bus for data transfer.

The **Supercal 5** is future-ready, it has been designed with the future in mind, combining the latest technology to create a modern heating and cooling meter that will serve a wider range of applications.

The winner of the Plus X Award, the Supercal 5 won the award due to its innovation, high quality, ease of use and functionality.



**01773 534555**

or [meters@dmsltd.com](mailto:meters@dmsltd.com) or [www.dmsltd.com](http://www.dmsltd.com)

**Sontex**  
your link to innovative metering  
EXCLUSIVE GB  
& IRELAND PARTNERS



# Heating & Cooling

Our range of Heating and Cooling meters (also known as Energy Meters) are MID approved and incorporate multiple data output options. We can also offer associated products such as Pressure Independent Control Valves and other accessories.

Supercal 5S Energy Meter	<b>10-11</b>
Superstatic 749 Energy Meter	<b>12-13</b>
Superstatic 789 Energy Meter	<b>14-15</b>
Sontex Supercal Power Supplies	<b>16</b>
Communication Modules	<b>16</b>
Supercal 5I Energy Integrator	<b>17</b>
Pt500 & Temperature Sensors	<b>18</b>
Sontex 878 Heat Cost Allocator	<b>19</b>
Sontex Supercom P	<b>20</b>
SonoSelect 10 Ultrasonic Energy Meter	<b>21</b>
SonoSafe 10 Ultrasonic Energy Meter	<b>21</b>
SonoMeter 40 Energy Meter	<b>22</b>
Sontex Heat Meter Insulation Jackets	<b>23</b>

Brands you can trust

**Sontex**  
your link to innovative metering

*Danfoss*



## Sontex Supercal 5S Energy Meters

**Sontex**  
your link to innovative meter

The Supercal 5s incorporates state-of-the-art technology, this next-generation calculator boasts many future-proof features, all set within a user-friendly interface. Features include configuration via NFC interface, a modular concept with 2 card slots, several tariffs and... LoRaWAN! It can also be supplied with Wireless M-Bus for data transfer.

The Supercal 5S succeeds the highly successful and respected Supercal 531. The new series integrator is characterised by the latest multi-functional technologies and meets customer-specific needs, such as simplified system integration, tariff and data logger functions, universal data transfer and connection to system processors. The Supercal 5s is future-ready, it has been designed with the future in mind, combining the latest technology to create a modern heating and cooling meter that will serve a wider range of applications.

Its volume input can be combined with mechanical, magnetic-flow, ultrasonic or fluidic oscillator flow sensors. It has additional pulse inputs which allow the connection of hot or cold water, gas, oil, and electricity meters, any meter with a pulsed output. Thanks to its extensive range of options for data communication, as well as its flexibility for collecting and recording dynamic plant data, the Supercal 5 can also lend itself well to applications in district heating networks and industrial installations.

### Additional Info:

- Optimisation of the housing for easier installation
- NFC technology for simplified and user-friendly configuration using Superprog Android
- Large illuminated dot-matrix display (128x64) for improved navigation in poor lighting
- 2 LEDs indicate, in real-time, the status of the calculator.
- Fully customisable tariff and data logger functions
- Display menu position customizable by Superprog Windows Software
- Lifespan of 6+1 years without additional power supply module
- Expanded data storage for enhanced monitoring.

### Standard Features:

<b>Compliance:</b>	MID Class
<b>Connection Size:</b>	15-500mm
<b>Connection Type:</b>	Screwed & Flanged
<b>Temperature:</b>	-20 °C to 200 °C
<b>Protection Class:</b>	IP65
<b>Display:</b>	Digital
<b>Training:</b>	DMSTeach Available
<b>Power Supply:</b>	12 Year Lithium Battery, 6 Year Lithium Battery
<b>Communications: Options</b>	M-Bus, Pulsed, Modbus BACnet, Analogue, Radio, Wireless M-Bus, LoRaWAN



**Supercal 5  
Datasheet**



**View  
Case Studies**



Country of Origin:  
Switzerland



## Sontex Supercal 5S (Screwed)

### Standard Features:

- 12 Year Battery, 230v or 24v
- Wired M-Bus & Pulse
- MID Approved
- 2mtr Pt500
- 3mtr Signal Cable

Part No.	Description
<b>SONSC5SA102</b>	Supercal 5S Qn1.5 1/2" (G3/4") <i>34mm Sensors &amp; Pockets, 110mm Fx F Version</i>
<b>SONSC5SA104</b>	Supercal 5S Qn1.5 3/4" (G1") <i>34mm Sensors &amp; Pockets, 190mm Fx F Version</i>
<b>SONSC5SA105</b>	Supercal 5S Qn2.5 3/4" (G1") <i>34mm Sensors &amp; Pockets, 190mm Fx F Version</i>
<b>SONSC5SA106</b>	Supercal 5S Qn3.5 1" (G5/4") <i>34mm Sensors &amp; Pockets, 260mm Fx F Version</i>
<b>SONSC5SA107</b>	Supercal 5S Qn6 1" (G5/4") <i>34mm Sensors &amp; Pockets, 260mm Fx F Version</i>
<b>SONSC5SA108</b>	Supercal 5S Qn10 1.5" (G2") <i>84mm Sensors &amp; Pockets, 300mm Fx F Version</i>

## Sontex Supercal 5S (Flanged)

### Standard Features:

- 12 Year Battery, 230v or 24v
- Wired M-Bus & Pulse
- 50-80mm models, 2mtr Pt500 100mm+ models, 5mtr Pt500
- MID Approved
- 50-80mm models, 3mtr Signal Cable, 100mm+ models, 10mtr Signal Cable

Part No.	Description
<b>SONSC5SA112CI</b>	Supercal 5S CI Qn15 DN50 PN16 <i>84mm Sensors &amp; Pockets, 270mm Fx F Version</i>
<b>SONSC5SA113CI</b>	Supercal 5S CI Qn25 DN65 PN16 <i>84mm Sensors &amp; Pockets, 300mm Fx F Version</i>
<b>SONSC5SA114CI</b>	Supercal 5S CI Qn40 DN80 PN16 <i>84mm Sensors &amp; Pockets, 300mm Fx F Version</i>
<b>SONSC5SA115CI</b>	Supercal 5S CI Qn60 DN100 PN16 <i>134mm Sensors &amp; Pockets, 360mm Fx F Version</i>
<b>SONSC5SA116CI</b>	Supercal 5S CI Qn100 DN125 PN16 <i>134mm Sensors &amp; Pockets, 250mm Fx F Version</i>
<b>SONSC5SA117CI</b>	Supercal 5S CI Qn150 DN150 PN16 <i>134mm Sensors &amp; Pockets, 300mm Fx F Version</i>
<b>SONSC5SA118</b>	Supercal 5S Qn250 DN200 PN16 <i>174mm Sensors &amp; Pockets, 350mm Fx F Version</i>
<b>SONSC5SA119</b>	Supercal 5S Qn400 DN250 PN16 <i>174mm Sensors &amp; Pockets, 450mm Fx F Version</i>
<b>SONSC5SA120</b>	Supercal 5S Qn800 DN350 PN16 <i>174mm Sensors &amp; Pockets, 500mm Fx F Version</i>
<b>SONSC5SA121</b>	Supercal 5S Qn1500 DN500 PN16 <i>174mm Sensors &amp; Pockets, 500mm Fx F Version</i>



**For further information or enquiries, please contact our team**



## Sontex Superstatic 749 Energy Meters



Through the integration of a sleek design, compact sizing and the fluid oscillation principle, the 749 has been extensively used throughout the UK and indeed globally for a multitude of different applications including metering inbuilt into HIUs, Domestic Apartment installations and also Solar Thermal applications just to name a few. The 749 meters can be programmed to work with glycol and antifreeze solutions whilst conforming to MID Class 2 Approval. Various communication outputs are also available including pulse, LoRaWAN, M-Bus, Radio and now Wireless M-Bus as well.

The Superstatic 749 meters are all Battery Powered as standard with options of 6 Year and 12 Year life spans and are fully replaceable without having to install a new meter. The 749-meter range is available as a QP0.6 15mm, QP1.5 15mm, QP1.5 20mm and QP2.5 20mm. The QP Rating mentioned is the nominal flow rate in m<sup>3</sup>/hr that each meter size can measure up to.

The compact design of the 749 range of Meters includes one of the temperature sensors being fitted to the meter body itself to save on space and installation requirements. Another feature of the design to save space is the display being mounted on the meter body as standard.

A wall bracket is supplied should the display need to be separated from the flow part so it can be mounted to a wall nearby.



### Additional Features:

- Sensors for M10 adaptor
- MID class 2



Country of Origin:  
Switzerland



**Superstatic 749  
Datasheet**



**View  
Case Studies**



## Sontex Superstatic 749 Energy Meters

### Standard Features:

<b>Compliance:</b>	MID Class 2, RHI Compliant
<b>Connection Size:</b>	15-20mm
<b>Connection Type:</b>	Screwed Connection
<b>Temperature:</b>	Heating & Cooling
<b>Training:</b>	DMSTeach Available
<b>Power Supply:</b>	12 Year/6 Year Lithium Battery
<b>Communications:</b>	M-Bus, Pulsed, Radio, Wireless M-Bus, LoRaWAN

### Additional Features:

- Screwed Connection
- 0.8mtr Signal Cable
- 2mtr x31 mm Sensors
- Pt500
- Direct Mount Fitting 1/2" BSPM
- EN1434

Part No. Description

#### Wired M-Bus (6 Year Battery)

<b>SON0749RJ231M11</b>	SuperStatic 749 Qn0.6 1/2" (G3/4") <i>Mi004 MID Approved</i>
<b>SON0749RL231M11</b>	SuperStatic 749 Qn1.5 1/2" (G3/4") <i>Mi004 MID Approved</i>
<b>SON0749RM231M11</b>	SuperStatic 749 Qn1.5 3/4" (G1") <i>Mi004 MID Approved</i>
<b>SON0749RN231M11</b>	SuperStatic 749 Qn2.5 3/4" (G1") <i>Mi004 MID Approved</i>

Part No. Description

#### Pulsed Output (12 Year Battery)

<b>SON0749RJ232P11</b>	SuperStatic 749 Qn0.6 1/2" (G3/4") <i>Mi004 MID Approved</i>
<b>SON0749RL232P11</b>	SuperStatic 749 Qn1.5 1/2" (G3/4") <i>Mi004 MID Approved</i>
<b>SON0749RM232P11</b>	SuperStatic 749 Qn1.5 3/4" (G1") <i>Mi004 MID Approved / D2</i>
<b>SON0749RN232P11</b>	SuperStatic 749 Qn2.5 3/4" (G1") <i>Mi004 MID Approved</i>



## Avoid Frozen Pipes at Winter!

Did you know that Sontex Heat Meters are Glycol Tolerant?

Tried and tested with over 100 known liquids!

Contact us to find out more





## Sontex Superstatic 789 Energy Meters



Innovation from Sontex is the Superstatic 789 Heat Meter. The biggest change in design from previous models is the use of a composite Meter body instead of Brass. The lightweight construction and lower costs add to the list of benefits that all Superstatic Meters carry. The 789s use the Fluid Oscillation Measuring Principle and have been tested to meet the requirements for MID Class 2. Therefore, the 789 Meters can be used with both Domestic and Commercial RHI Installations and for Billing Applications as well. Systems with glycol content are also not a problem as the 789s can be calibrated to measure accurately in such systems. Now available with LoRaWAN!

As per the other ranges of compact Meters that Sontex offers, the 789 has one of the temperature sensors mounted on the Meter Body in order to save on space and installation costs. The Display can be mounted on a wall nearby using the bracket provided but the general use for these Meters would have the Display mounted on the body itself.

The Superstatic 789 meters are all Battery Powered as standard and the batteries are fully replaceable without having to install a new meter. The lifespan of these batteries are available in options of 6 years and

12 years. Three sizes of the 789 are available including QP1.5 15mm, QP1.5 20mm and QP2.5 20mm. The QP Reference relates to the nominal flow rate in m<sup>3</sup>/hr that each Meter can measure up to.

### Standard Features:

<b>Compliance:</b>	MID Class 2, RHI Compliant
<b>Connection Size:</b>	15-20mm
<b>Connection Type:</b>	Screwed
<b>Temperature:</b>	Heating & Cooling
<b>Training:</b>	DMSTeach Available
<b>Power Supply:</b>	12 Year Lithium Battery, 6 Year Lithium Battery
<b>Communications Options:</b>	M-Bus, Pulsed, Radio, Wireless M-Bus, LoRaWAN



**Supercal 789 Datasheet**



**View Case Studies**



Country of Origin:  
Switzerland




## Sontex Superstatic 789 (Pulse Output)

### Standard Features:

- Screwed Connection
- 0.8mtr Signal Cable
- 2mtr x 31mm Sensors
- Pt500
- Direct Mount Fitting 1/2" BSPM,
- EN1434, MI004 MID Approved

Part No.	Description
----------	-------------

### Pulsed Output (12 Year Battery)

<b>SON0789RL232P11</b>	SuperStatic 789 Qn1.5 1/2" (G3/4") Screwed
<b>SON0789RM232P11</b>	SuperStatic 789 Qn1.5 3/4" (G1") Screwed
<b>SON0789RN232P11</b>	SuperStatic 789 Qn2.5 3/4" (G1") Screwed




## Sontex Superstatic 789 (M-Bus Comms)

### Standard Features:

- Screwed Connection
- 0.8mtr Signal Cable
- 2mtr x 31mm Sensors
- Pt500
- Direct Mount Fitting 1/2" BSPM
- EN1434, MI004 MID Approved

Part No.	Description
----------	-------------

### Wired M-Bus (6 Year Battery)

<b>SON0789RL231M11</b>	SuperStatic 789 Qn1.5 1/2" (G3/4") Screwed
<b>SON0789RM231M11</b>	SuperStatic 789 Qn1.5 3/4" (G1") Screwed
<b>SON0789RN231M11</b>	SuperStatic 789 Qn2.5 3/4" (G1") Screwed

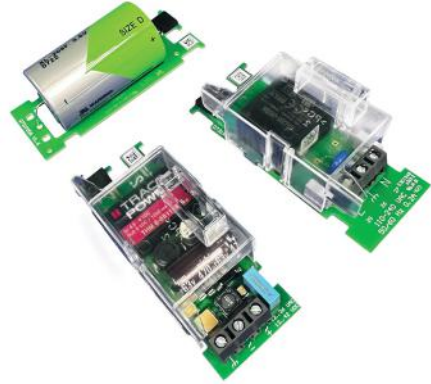
# Training tailored to you

Join us for bespoke metering, controls  
and data collecting training

Heat, Water & Gas Metering | Data Collection | Safety & Controls

Book online at [dmsltd.com/training](https://dmsltd.com/training) or [dmsltd.com/cpd-training](https://dmsltd.com/cpd-training)

## Sontex Supercal Power Supply



Part No.	Description
<b>SONSC5X00010</b>	Supercal 5 D-Cell Battery Module
<b>SONSC5X00011</b>	SC5 12-36VAC/12-42VDC Power Supply
<b>SONSC5X00012</b>	Supercal 5 110-230V Power Supply

## Sontex Supercal 5 Communication Modules

The retrofittable modules from Sontex are to be used in the Supercal 5S Calculators.

These modules expand on the existing communication outputs in the Supercal 5, allowing them to be used in a wide variety of data networks.

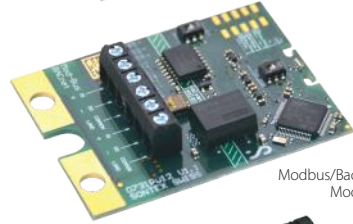
The integrators have two module slots that can house:

- MODBus/BACnet
- M-Bus
- LoRaWAN
- Analogue 4-20ma
- Relay Pulse Outputs

Factory Fit options are standard, all coming with M-Bus output and Pulsed Output with Pulsed inputs added too.



M-Bus Module (Retrofit)



Modbus/Bacnet Module



LoRaWAN Module (Retrofit)

Part No.	Description
<b>SONSC5X00020</b>	Supercal 5 M-Bus Module (Retrofit)
<b>SONSC5X00021</b>	Supercal 5 Modbus/Bacnet Module
<b>SONSC5X00022</b>	Supercal 5 LoRaWAN Module (Retrofit)
<b>SONSC5X00032</b>	Supercal 5 Analogue Module 4-20mA/0-10V

Country of Origin: Switzerland



## Need Technical Support or finding the right product?

Our team can assist and advise you with any questions you have and help you source the correct product from individual components through to complete solutions

**Call: 01773 534 555**







### Standard Features:

<b>Compliance:</b>	MID Class
<b>Temperature:</b>	-20 °C to 200 °C
<b>Protection Class:</b>	IP65
<b>Display:</b>	Digital
<b>Training:</b>	DMSTeach Available
<b>Power Supply:</b>	12 Year Lithium Battery, 6 Year Lithium Battery 230Vac Mains Powered 24Vac/dc Mains Powered
<b>Communications: Options</b>	M-Bus, Pulsed, Modbus, BACnet, Analogue, Radio, Wireless M-Bus, LoRaWAN



Country of Origin:  
Switzerland



**Supercal 5  
Datasheet**

# Supercal 5 Energy Integrator

(Wired M-Bus/Wireless M-Bus)

The Supercal 5l incorporates state-of-the-art technology, this next-generation calculator boasts many future-proof features, all set within a user-friendly interface. Features include configuration via NFC interface, a modular concept with 2 card slots, several tariffs and ... LoRaWAN! It can also be supplied with a wireless or wired M-Bus for data transfer.

The Supercal 5l succeeds the highly successful and respected Supercal 531. The new series integrator is characterised by the latest multi-functional technologies, it meets customer-specific needs such as simplified system integration, tariff and data logger functions, universal data transfer and connection to system processors. The Supercal 5s is future-ready, it has been designed with the future in mind, combining the latest technology to create a modern heating and cooling meter that will serve a wider range of applications.

Its volume input can be combined with mechanical, magnetic-flow, ultrasonic or fluidic oscillator flow sensors. It has additional pulse inputs which allow the connection of hot or cold water, gas, oil, and electricity meters, any meter with a pulsed output. Thanks to its extensive range of options for data communication, as well as its flexibility for collecting and recording dynamic plant data, the Supercal 5l can also lend itself well to applications in district heating networks and industrial installations.

The Supercal 5l is equipped with a battery as standard, other power supply modules are also available.

### Additional Info:

- Optimisation of the housing for easier installation
- NFC technology for simplified and user-friendly configuration using Superprog Android
- Large illuminated dot-matrix display (128x64) for improved navigation in poor lighting
- 2 LEDs indicate, in real-time, the status of the calculator.
- Fully customisable tariff and data logger functions
- Display menu position customizable by Superprog Windows Software
- Lifespan of 6+1 years without additional power supply module
- Expanded data storage for enhanced monitoring.

### Standard Features:

- Factory Fitted M-Bus & Pulse
- K=10L Impulse Factor, unless specified otherwise, Pt500 Sensor Type

Part No.	Description
<b>SONSCS1100</b>	Supercal 5l Energy Integrator (Wired M-Bus)
<b>SONSCS11010</b>	Supercal 5l Energy Integrator (Wireless M-Bus)

**For further information or enquiries, please contact our team**

# Pt500 & Temperature Sensors

Sontex manufacture and supply temperature sensors to suit all of their Heating and Cooling Meters and their respective Integrators. The Supercal S5 range of meters use a pocket type installation with probes and pockets paired to meet the required pipe size. All pockets provide a 1/2" BSP Male Thread connection. These sensors and pockets are available in varying probe lengths of 34mm, 84mm, 134mm and 174mm. There's also options of cable lengths of 2 metres and 5 metres, and to meet larger requirements a plastic head temperature sensor can be offered for 84mm, 134mm and 174mm probes which can be supplied alongside up to 15 metre cable lengths.

For the smaller, compact meter ranges of Superstatic 449, 749 and Supercal 739 meters a Direct Mount Sensor is used with the probe making direct contact with the fluid. The Direct Mount Temperature Sensors are available with a 2 metre cable from the probe to the Integrator. The connection on the temperature probe itself is an M10 thread and we can also offer a Direct Mount Adaptor that steps this connection up to a 1/2" BSP Male so as to standardise across the range.



## Pt500 Sensors and Sensor Pockets

These sensors and pockets are available in varying probe lengths of 34mm, 84mm, 134mm and 174mm. There's also options of cable lengths of 2 metres and 5 metres, and to meet larger requirements a plastic head temperature sensor can be offered for 84mm, 134mm and 174mm probes which can be supplied alongside up to 15 metre cable lengths.

## Pt500 Sensors

Part No.	Description
<b>SON0460R030</b>	Pair Pt500 Sensors 34mm x 2mtr
<b>SON0460R531</b>	Pair Pt500 Sensors 84mm x 2mtr
<b>SON0460R532</b>	Pair Pt500 Sensors 134mm x 2mtr
<b>SON0460R533</b>	Pair Pt500 Sensors 34mm x 5mtr
<b>SON0460R534</b>	Pair Pt500 Sensors 84mm x 5mtr
<b>SON0460R535</b>	Pair Pt500 Sensors 134mm x 5mtr
<b>SON0460R536</b>	Pair Pt500 Sensors 174mm x 2mtr
<b>SON0460R537</b>	Pair Pt500 Sensors 174mm x 5mt
<b>SON0460R538</b>	Pair Pt500 Short Direct Sensors 2mtr Cable

## Sensor Pocket

Part No.	Description
<b>SON0460A206</b>	Sensor Pocket 1/2" BSP x 34mm pairs
<b>SON0460A207</b>	Sensor Pocket 1/2" BSP x 84mm pairs
<b>SON0460A208</b>	Sensor Pocket 1/2" BSP x 134mm pairs
<b>SON0460A209</b>	Sensor Pocket 1/2" BSP x 174mm pairs



Country of Origin:  
Switzerland



## Sontex 878 Heat Cost Allocator

Offering maximum flexibility in parameter setting, notably simpler installation and commissioning, as well as improved follow-up of consumption rates. All three offer Swiss precision, maximum ease of use, highly reliable transmission and guaranteed fair invoicing for the final customer.

### Simple installation

Thanks to preinstalled seal, the devices are simple and fast to install. Commissioning is automatic. Registration is also extremely easy via a barcode on a removable sticker.

### Impressively secure

Prog6 software allows up to 45 different parameters to be set via a standardised optical interface. Only authorised persons can change these parameters. The software itself is also equipped with a password function.

### Reliability

The devices feature high reliability when transmitting the energy consumed. They have undergone a 10-year-equivalent load test – the typical lifespan of the 3V lithium battery and thus the device's scheduled operating period.

### Traceability

The devices store up to 144 monthly and 18 semi-monthly values. 18 monthly values of the highest radiator temperature are stored. This guarantees high traceability, for example when tenants change.

### User-friendly

Transmission of consumption rates and stored parameters is also possible on site via the optical interface. Sontex 566 and 868: the meter can be read off both remotely by a data collection centre or mobile close to the meter's location.

### Precise room temperature

Thanks to a special algorithm, Sontex' new-generation heat cost allocators register the room temperature much more precisely than comparable products.

### Standard Features:

Temperature:	0°C - 105°C
Display:	LCD Display
Mounting Style:	Pre-mounted Seal (included) Universal Aluminium back plate (included)
Protection Class:	IP52
Power Supply:	Lithium battery with a typical lifespan of 10 + 1 years.
Communications:	Bidirectional radio communication LoRaWAN/OMS

Part No.	Description
<b>SON08780001</b>	Sontex 878 Heat Cost Allocator



**Sontex 878 Heat Cost Allocator Datasheet**



Country of Origin:  
Switzerland

## Supercom P

The LoRaWAN® pulse-radio converter Supercom P is suitable for remote reading of measuring devices of all kinds of supply types of measuring instruments - and transmits the consumption data to be read out via LoRaWAN®.

The LoRaWAN® pulse-radio converter Supercom P is equipped with two pulse inputs and one wired M-Bus master interface allowing to manage up to 2 M-Bus devices.

### Standard Features:

- Temperature:** 5°C up to 55°C
- Mounting:** Wall Mounted or via DIN Rail Mounting Plate
- Protection Class:** IP68
- Power Supply:** 3.6 V Lithium Battery (6+1 Years) or via 5-30Vdc
- Communication Output:** LoRaWAN



Country of Origin:  
Switzerland



Part No.	Description
<b>SON0541001P</b>	Supercom P Pulse-to-LoRaWAN Converter

**For further information or enquiries, please contact our team**

# We take pride in our track record of successful projects that meet and exceed our clients' expectations.

Discover the benefits of innovative, industry-leading metering products and technologies and how they are being used to make a difference in real-world applications

At DMS we are proud of the projects we have delivered and showcase just some of our successes.



Find out more at [dmsltd.com/casestudies](http://dmsltd.com/casestudies)



## SonoSelect 10 & SonoSafe 10 Ultrasonic Energy Meter

The Danfoss SonoSelect 10 and SonoSafe 10 are ultrasonic compact energy meters intended for measuring energy consumption in heating, cooling and combined heating and cooling applications for billing purposes. The meters are designed for remote meter read-out (AMR). The energy meters consist of an ultrasonic flow sensor, a pair of Pt1000 temperature sensors and a calculator with integrated circuits for temperature measurement, flow calculation and energy calculation.

### SonoSelect 10 Features

- Heating or cooling or combined heating & cooling
- 1.5m PUR or silicone cable between calculator and flow sensor allow for flexible installation.

### SonoSafe 10 Features

- Heating only
- 0.5 m cable PVC between calculator and flow sensor

### Standard Features:

- Connection Size:** 15-32mm
- Temperature:** 5°C to 130°C
- Cable Length:** 1.5m sensors
- Power Supply:** Battery or 230v
- Communications:** Various Communication outputs

### Additional Features:

- Compact design (display fitted to the body)
- Wet type pockets
- Screwed BSP (unions included)

Part No.	Description
<b>SonoSelect/Safe 10</b>	Qp0.6 ½" Heat Meter (G3/4")
<b>SonoSelect/Safe 10</b>	Qp1.5 ½" Heat Meter (G3/4")
<b>SonoSelect/Safe 10</b>	Qp1.5 ¾" Heat Meter (G1")
<b>SonoSelect/Safe 10</b>	Qp2.5 ¾" Heat Meter (G1")
<b>SonoSelect/Safe 10</b>	Qp3.5 1" Heat Meter (G1¼")
<b>SonoSelect/Safe 10</b>	Qp6 1" Heat Meter (G1¼")
<b>SonoSelect/Safe 10</b>	Qp6 1¼" Heat Meter (G1.5")



For further information or enquiries, please contact our team

# DMS Metering Solutions

proudly affiliated with





# SonoMeter 40 Energy Meter

Ultrasonic energy meter for demanding applications SonoMeter 40 is a compact ultrasonic meter for measuring the flow and thermal energy in heating and/or cooling applications within district energy networks, commercial and residential buildings. The meter is MID class II B+D approved. It can be ordered for supply or return pipe installation and provides many different configuration options.

**Standard Features:**

- Connection Size:** 15-100mm
- Temperature:** 0°C to 130°C
- Cable Sensors:** 1.5m, 3m, 5m or 10m
- Power Supply:** Battery, 12V-36VAC, 12V-42VDC or 230v
- Communications:** Various Communication outputs

**Additional Features:**

- Compact design
- Heating or cooling or combined heating & cooling
- Ascending transducer cable and pocket length, depending on size of flow body
- Wet type pockets for 15 and 20mm
- Dry type pockets for 25mm and above
- 15mm-40mm screwed BSP (unions included)
- 50mm and above flanged PN16

Part No. Description

**Screwed Connection**

<b>SonoMeter 40</b>	Qp0.6 ½" & ¾" Heat Meter (G3/4")
<b>SonoMeter 40</b>	Qp1.0 ½" & ¾" Heat Meter (G3/4")
<b>SonoMeter 40</b>	Qp1.5 ½" Heat Meter (G3/4")
<b>SonoMeter 40</b>	Qp1.5 ¾" Heat Meter (G1")
<b>SonoMeter 40</b>	Qp2.5 ¾" Heat Meter (G1")
<b>SonoMeter 40</b>	Qp3.5 1" Heat Meter (G1¼")
<b>SonoMeter 40</b>	Qp6 1" Heat Meter (G1¼")
<b>SonoMeter 40</b>	Qp10 1.5" Heat Meter (G2")

**Flanged Connection**

<b>SonoMeter 40</b>	Qp15 DN50 Flanged Heat Meter
<b>SonoMeter 40</b>	Qp25 DN65 Flanged Heat Meter
<b>SonoMeter 40</b>	Qp40 DN80 Flanged Heat Meter
<b>SonoMeter 40</b>	Qp60 DN100 Flanged Heat Meter



Screwed



Flanged



Country of Origin:  
Denmark

## Need Technical Support?

Our team can assist and advise you with any questions you have and help you source the correct product from individual components through to complete solutions

**Call: 01773 534 555**





## Sontex Heat Meter Insulation Jackets

Durable, energy-efficient and impact-resistant heat meter jackets, another exciting product that had been added to our vast collection!

Heat meter jackets protect your meter from energy loss and are designed and optimised for use in highly congested areas with clash points.

DMS Insulation jackets are up to 3 times more efficient than other conventional insulation materials, reducing carbon footprint and energy costs on existing plants. These have been designed to be impact resistant and will provide protection from sharp objects or hot surfaces, reducing health and safety risks.

The DMS Insulation jackets give a Significant reduction in energy losses from boilers (95%), valves and other equipment. We can provide the jackets with a pull cord or velcro fixing method. The filling is made from 50mm duct wrap and the outer consists of double grey silicone

DMS insulated jackets protect equipment and workers for a range of industries such as LNG, food and beverages, marine, schools, hospitals and petrochemical plants. They also provide protection for offshore and oil and gas and defence. DMS Insulated jackets can be retrofitted to enhance/replace existing plants or applied to new build applications.

### Standard Features:

- NORSOK R-004 Specification
- Double Grey Silicone Inner & Outer, 50mm Ductwrap, up to 220°C, Velcro & Drawcord Fixing Method

### Weather Protection

- ISO 20340:2009 weathering 4200 hours in cycles of:
- Accelerated UV weathering
- Neutral salt spray exposure
- IACS UR S14.2.3 - Watertight Compartments, a requirement of NORSOK R-004



Country of Origin:  
United Kingdom



**Sontex Heat  
Meter Jacket  
Datasheet**

**Insulation Jackets are also  
available for our range of Water  
Meters.**

Part No. Description

#### Screwed

**JACK1000** Sontex Heat Meter Jacket - 1.5"

#### Flanged

**JACK1002** Sontex Heat Meter Jacket - DN40

**JACK1004** Sontex Heat Meter Jacket - DN50

**JACK1006** Sontex Heat Meter Jacket - DN65

**JACK1008** Sontex Heat Meter Jacket - DN80

**JACK1010** Sontex Heat Meter Jacket - DN80

**JACK1012** Sontex Heat Meter Jacket - DN100 PN16

**JACK1014** Sontex Heat Meter Jacket - DN100 PN25

**JACK1020** Sontex Heat Meter Jacket - DN125 PN16

**JACK1022** Sontex Heat Meter Jacket - DN125 PN25

**JACK1024** Sontex Heat Meter Jacket - DN150 PN16

**JACK1026** Sontex Heat Meter Jacket - DN150

**JACK1028** Sontex Heat Meter Jacket - DN150 PN25 300mm

**JACK1030** Sontex Heat Meter Jacket - DN150 PN25 500mm

**JACK1032** Sontex Heat Meter Jacket - DN200 PN16

**JACK1034** Sontex Heat Meter Jacket - DN200 PN25

**JACK1036** Sontex Heat Meter Jacket - DN250 PN16

**JACK1038** Sontex Heat Meter Jacket - DN250 PN25

**JACK1040** Sontex Heat Meter Jacket - DN350 PN10

**JACK1042** Sontex Heat Meter Jacket - DN350 PN16

**JACK1044** Sontex Heat Meter Jacket - DN500 PN10

**JACK1046** Sontex Heat Meter Jacket - DN500 PN16



# JS Smart+ Water Meter - Smarter Water, Smarter Living.

**Experience precision, efficiency, and sustainability with the JS Smart+ Water Meter.**

Designed for modern homes and businesses, our cutting-edge water meter offers unparalleled accuracy and smart features to help you take control of your water usage.

#### Key Features:

- **Real-Time Monitoring:** Keep track of your water consumption with real-time data accessible via your smartphone or computer.
- **Leak Detection:** Receive instant alerts to your device at the first sign of a leak, helping you prevent water damage and costly repairs.
- **Automated Billing:** Enjoy hassle-free, accurate billing with our advanced metering system that integrates seamlessly with your utility provider.
- **Easy Installation:** Our compact and user-friendly design ensures a quick and easy installation process, making it suitable for any setting.
- **Eco-Friendly:** Reduce your environmental footprint by optimizing water use and identifying areas where you can conserve.

#### Why Choose JS Smart+?

- **Reliability:** Built to last with high-quality materials and advanced technology.
- **Support:** Dedicated customer service to assist you with any questions or issues.
- **Savings:** Lower your water bills by monitoring and managing your usage more effectively.

Upgrade to the JS Smart+ Water Meter today and join the revolution in smart water management. Control your consumption, protect your property, and contribute to a sustainable future.

For further information, please contact our technical team on 01773 534 555 or email [meters@dmsltd.com](mailto:meters@dmsltd.com)

**DMS** METERING SOLUTIONS



# Water

DMS supports a full range of Domestic, Commercial and Industrial including WRAS and MID approved.

Apator Powogaz JS Smart+ Meters	<b>26</b>
NNK Pulse Transmitter Cable & Block	<b>26</b>
Apator Powogaz JSC Cold Water Meters	<b>27</b>
Apator Powogaz MWN Cold Water Meters	<b>28</b>
Apator Powogaz JS90 Hot Water Meters	<b>29</b>
Apator Powogaz JS130 Hot Water Meters	<b>30</b>
Apator Powogaz MWN Hot Water Meters	<b>31</b>
Apator Powogaz JS Eco Water Meters	<b>32</b>
Smart D+ Water Meter	<b>33</b>
WI Flanged Irrigation Meter	<b>34</b>
V210 Conccetric Water Meters	<b>35</b>
V200 Cold Water Meters	<b>36</b>
Ultimis Ultrasonic Meters	<b>37</b>
JS/JSC Master C+ IP68 Water Meters	<b>38</b>
MWN Nubis IP68 Water Meter	<b>39</b>
Water Leak Detection System	<b>40</b>
Insulation Jackets for Water	<b>41</b>

Brands you can trust

**DMS** METERING SOLUTIONS

**APATOR**  
POWOGAZ

**Honeywell**

## JS Smart + Cold Water Meter

One of the most popular ranges of meters from Apator PoWogaz, the JS Smart + Domestic Cold Water Meters are available in a 15 or 20mm connection size to suit all smaller and domestic applications. These Meters can be mounted in either a horizontal or vertical position thanks to the Single Jet measuring style which can work in either plane of direction. Unions are supplied with each meter giving a BSP Male thread connection. The JS Meters are suitable for cold water up to 30°C and are MID approved for Billing applications. They are also WRAS approved which makes them safe for Potable Drinking Water applications throughout the UK.

The latest design for the JS Smart + can now have a retrofittable pulsed output for a ratio of 1 litre per pulse. This allows the meters to be used as part of a remote data collection network. Alongside the Pulsed Output, an M-Bus version is also available offering the use of this meter in a wired or wireless M-Bus network.

The JS Models are all of a Dry Dial design so the internal dial mechanisms will not be directly worn down by contact with water. Only the turbine impeller makes direct contact with the water. The dial itself can be rotated to make reading the meters easier visually.

### Product Features:

<b>Compliance:</b>	MID Approved, WRAS Approved
<b>Connection Size:</b>	15-20mm
<b>Connection Type:</b>	Screwed Connection
<b>Temperature:</b>	Cold (Max Flow Temp 50°C)
<b>Communication Outputs:</b>	M-Bus, Pulsed - 1L/P, Wireless M-Bus

### Additional Features:

- Flat Index to accept NNK Transmitter
- Easy to read with counter setting within 360°

Part No.	Description
<b>POW00130</b>	JS 15 1/2" Qp1.6 Cold Water Meter
<b>POW00132</b>	JS 20 3/4" Qp 2.5 Cold Water Meter



RF frontend SMART TOP enabling remote indication reading



JS Smart+  
Datasheet



Country of Origin:  
Poland

## NNK Pulse Transmitter Cable and Block

The NNK Pulse Transmitters clip onto the top of the JS 15 & 20mm Water Meters which have flat indexes. This allows easy retrofit to receive a volt free pulsed output from these models of Water Meters. They are suitable for either the Cold or Hot models.

### Product Features:

<b>Communication Outputs:</b>	Pulsed
<b>IP Rating:</b>	IP54

### Additional Features:

- For JS DN15-DN20 Series Meters

Part No.	Description
<b>POW00036</b>	NNK Pulse Transmitter Cable and Block



NNK Pulse  
Transmitter  
Datasheet



Country of Origin:  
Poland



## JSC Cold Water Meter



JSC Cold Water Meter



JSC Cold Water Meter with fitted Volt free Pulse Output



The JSC range represents an evolution of the popular JS water meters. Through calibration to comply with MID Class C (R160), all models now boast the ability to measure across wider flow ranges, catering to larger installations and commercial water monitoring needs. Utilizing a Single Jet measuring style, these meters are suitable for both horizontal and vertical pipework installations and come with relevant union connections for BSP Male thread connections.

With WRAS approval, the JSC meters meet the requirements for use in Potable Drinking Water applications in the UK. Additionally, calibration to MID standards enables their use in billing scenarios. The cold versions of these meters are rated for water temperatures up to 50°C maximum.

Each size of the JSC meters is available in an NK version, providing a Pulsed Output at a ratio of 10 litres per pulse. M-Bus Modules can also be integrated, allowing connection to wired or wireless M-Bus networks.

With a Dry Dial design, the meter index remains unaffected by condensation or water contact. Water measurement occurs solely through the turbine impeller inside the meter body. Furthermore, all dials are rotatable, facilitating easier visual meter readings when installed in different directions.

### Product Features:

<b>Compliance:</b>	MID, WRAS Approved
<b>Connection Size:</b>	25-40mm
<b>Connection Type:</b>	Screwed
<b>Temperature:</b>	Cold
<b>Communication Outputs:</b>	Pulsed - 10L/P, M-Bus, Pulsed, Wireless M-Bus

Part No.	Description	Q1 Capacity	Q3 Capacity
<b>JSC</b>			
<b>POW00250</b>	JSC 6.3 (R160) 1" Cold Water Meter	0.040m <sup>3</sup> /hr	6.3m <sup>3</sup> /hr
<b>POW00252</b>	JSC 10 (R160) 1.25" Cold Water Meter	0.063m <sup>3</sup> /h	10m <sup>3</sup> /hr
<b>POW00254</b>	JSC 16 (R160) 1.5" Cold Water Meter	0.100m <sup>3</sup> /hr	16m <sup>3</sup> /hr
<b>JSC-NK (Fitted with Volt Free Pulse Output)</b>			
<b>POW00260</b>	JSC-NK 6.3 (R160) 1" Pulsed Cold Water Meter	0.040m <sup>3</sup> /hr	6.3m <sup>3</sup> /hr
<b>POW00262</b>	JSC-NK 10 (R160) 1" Pulsed Cold Water Meter	0.063m <sup>3</sup> /hr	10m <sup>3</sup> /hr
<b>POW00264</b>	JSC-NK 16 (R160) 1.25" Pulsed Cold Water Meter	0.1m <sup>3</sup> /hr	16m <sup>3</sup> /hr



Country of Origin:  
Poland



JSC Class  
Data Sheet

## Training Videos on our YouTube Channel

Providing you with the latest insights, tutorials, and updates on metering solutions that drive efficiency and sustainability.



## MWN Cold Water Meter

The MWN Woltmann Cold Water Meters are designed for larger commercial applications, allowing for the monitoring of bulk water flows in both horizontal and vertical installation positions. While the maximum operating temperature for cold water applications is 30°C, recent calibration improvements have expanded the meters' ability to measure water flow across a wider range of rates.

All MWN Meters are MID approved for billing requirements and hold WRAS approval, ensuring safety for use in Potable Drinking Water installations.

Standard fittings include a PN16 Flanged connection from 40mm to 300mm. However, the 50mm meter uniquely offers a BSP Union connection, featuring a 2" BSP Male connection.

These MWN Cold Water Meters are NKOP Models, allowing for the addition of an NK Pulse Transmitter for remote reading. Output ratios range from 10 litres per pulse to 100 litres per pulse, varying with meter size. Additionally, all models can be adjusted to meet specific ratio requirements, from 10 to 1000 litres per pulse. Similar to the JS and JSC ranges from PoWogaz, an M-Bus output is available, providing flexibility for use in wired or wireless M-Bus networks.

### Product Features:

<b>Compliance:</b>	MID Approved, WRAS Approved
<b>Connection Size:</b>	40-300mm
<b>Connection Type:</b>	Flanged PN16, Screwed
<b>Temperature:</b>	Cold (Max Flow Temp 50°C)
<b>Communication Outputs:</b>	M-Bus, Pulsed, Wireless M-Bus

### Additional Features:

- Remote meter reading via wired or wireless interfaces
- Tested and robust design
- Wide metering range
- IP65 Rated



Screwed Connection



Flanged Connection



MWN Water Meter Datasheet



Country of Origin: Poland

Part No.	Description	Q1 Capacity	Q3 Capacity	Minimum Output Ratio
<b>Screwed Connection</b>				
<b>POWO2099</b>	MWN-G NKOP50 2"Scrd Woltman CW Meter 50°C	0.40m3/hr	40m3/hr	K=10L
<b>Flanged PN16 Connection</b>				
<b>POWO2100</b>	MWN-NKOP40 Woltman Cold Water Meter 50°C	0.40m3/hr	40m3/hr	K=10L
<b>POWO2101</b>	MWN-NKOP50 Woltman Cold Water Meter 50°C	0.40m3/hr	40m3/hr	K=10L
<b>POWO2102</b>	MWN-NKOP65 Woltman Cold Water Meter 50°C	0.504m3/hr	6.3m3/hr	K=10L
<b>POWO2103</b>	MWN-NKOP80 Woltman Cold Water Meter 50°C	0.625m3/hr	100m3/hr	K=10L
<b>POWO2104</b>	MWN-NKOP100 Woltman Cold Water Meter 50°C	0.80m3/hr	160m3/hr	K=10L
<b>POWO2105</b>	MWN-NKOP125 Woltman Cold Water Meter 50°C	1.56m3/hr	250m3/hr	K=10L
<b>POWO2106</b>	MWN-NKOP150 Woltman Cold Water Meter 50°C	2.00m3/hr	400m3/hr	K=100L
<b>POWO2107</b>	MWN-NKOP200 Woltman Cold Water Meter 50°C	5.04m3/hr	630m3/hr	K=100L
<b>POWO2108</b>	MWN-NKOP250 Woltman Cold Water Meter 50°C	10.00m3/hr	1000m3/hr	K=1000L
<b>POWO2109</b>	MWN NKOP300 Woltman Cold Water Meter 50°C	16.05m3/hr	1600m3/hr	K=1000L
<b>NK Pulse Output Kit</b>				
<b>POWO9101</b>	MWN-NK Pulse Output Kit DN40 to DN500 - IP54, Cold Meters			



JS Smart+ Meter with  
NNK Transmitter



Country of Origin:  
Poland



JS Smart+  
Datasheet

## JS90 Smart + Hot Water Meter

The JS Hot Water Meters are designed for domestic installations and small hot water feeds, operating effectively up to 90°C. Their Single Jet measuring style allows for installation in either horizontal or vertical orientations without being affected by changes in flow direction.

Available in 15mm and 20mm connection sizes, these meters come with BSP unions providing a BSP Male threaded connection. They are MID approved, ensuring suitability for billing applications.

Featuring a dry dial design, the JS Hot Water Meters prevent deterioration from direct water contact on the dial and its mechanisms. The only moving part in contact with water is the turbine impeller inside the meter body. Additionally, the dial can be rotated to enhance visual meter reading convenience.

Pulsed versions of the JS Hot Water Meters are also available, equipped with the NK Pulse Output, typically set at a 1 litre per pulse ratio. This enables connectivity to a remote data collection network. Furthermore, an M-Bus version is offered alongside the Pulsed Output, providing flexibility for use in wired or wireless M-Bus networks.

### Product Features:

<b>Compliance:</b>	MID, WRAS Approved
<b>Connection Size:</b>	15-20mm
<b>Connection Type:</b>	Screwed
<b>Temperature:</b>	Hot (Max Flow Temp 90°C)
<b>Communication Outputs:</b>	M-Bus, Pulsed - 1L/P, Wireless M-Bus

### Additional Features:

- Flat Index to accept NNK Transmitter
- Easy to read with counter rotation within 360°C
- Solid and tested and simultaneously permanently improved construction

Part No.	Description
<b>POW00134</b>	JS90 15 1/2" Qp1.6 Hot Water Meter
<b>POW00136</b>	JS90 20 3/4" Qp2.5 Hot Water Meter

## Training tailored to you

Join us for bespoke metering, controls  
and data collecting training

Heat, Water & Gas Metering | Data Collection | Safety & Controls

Book online at [dmsltd.com/training](https://dmsltd.com/training) or [dmsltd.com/cpd-training](https://dmsltd.com/cpd-training)

## JSC130 Hot Water Meter

The JSC Hot Water Meters mirror their Cold counterparts but are engineered to withstand temperatures up to 130°C. Employing a Single Jet measuring style, these meters are adaptable for installation in both horizontal and vertical pipework configurations.

All JSC Meters carry MID approval, making them suitable for billing applications, with calibration covering a range up to R80.

For flexibility in installation, the dials of JSC Meters can be rotated to accommodate different flow directions, facilitating easy visual meter index readings. Pulsed models are available, featuring an NK Reed switch and cable for remote data communication, with a pulse ratio of 10 litres per pulse. Additionally, M-Bus modules can be integrated into the meters, enabling data transmission via wired or wireless M-Bus networks.

Union connections with BSP Male thread connections are included with each meter for seamless installation.

### Product Features:

<b>Compliance:</b>	MID Approved
<b>Connection Size:</b>	15-40mm
<b>Connection Type:</b>	Screwed
<b>Temperature:</b>	Hot
<b>Communication Outputs:</b>	M-Bus, Pulsed, Wireless M-Bus



JSC130 Hot Water Meter



JSC130 Hot Water Meter with fitted Volt free Pulse Output

Part No.	Description	Q1 Capacity	Q3 Capacity
<b>Screwed Connection (Complete with Union Connections)</b>			
<b>POWO0350</b>	JSC130 6.3 (R80) 1" Hot Water Meter	0.078m <sup>3</sup> /hr	6.3m <sup>3</sup> /hr
<b>POWO0352</b>	JSC130 10 (R80) 1.25" Hot Water Meter	0.125m <sup>3</sup> /hr	10m <sup>3</sup> /hr
<b>POWO0354</b>	JSC130 16 (R80) 1.5" Hot Water Meter	0.200m <sup>3</sup> /hr	16m <sup>3</sup> /hr

### Screwed Connection, Pulsed (MID Approved)

<b>POWO0360</b>	JSC130-NK 6 (R80) 1" Pulsed HW Meter	0.078m <sup>3</sup> /hr	6.3m <sup>3</sup> /hr
<b>POWO0362</b>	JSC130-NK 10 (R80) 1.25" Pulsed HW Meter	0.125m <sup>3</sup> /hr	10m <sup>3</sup> /hr
<b>POWO0364</b>	JSC130-NK 16 (R80) 1.5" Pulsed HW Meter	0.200m <sup>3</sup> /hr	16m <sup>3</sup> /hr



Country of Origin:  
Poland



JSC Hot Water

# Water meters for all applications

from Irrigation to AMR  
- we have a solution for all.



## MWN Hot Water Meter

For high-temperature systems in commercial and larger flow demands, the MWN Hot Water Meters offer a tailored solution. Engineered to accommodate larger pipework and flow rates, these meters boast a maximum operating temperature of 130°C. Utilizing a Woltmann style design with an impeller measuring system, they can be installed horizontally or vertically. All MWN Hot Water Meters are MID approved for billing installations.

Standard fittings include a PN16 Flanged Connection from 40mm up to 300mm, with the added option of a BSP Union connection for the 50mm size. The MWN range distinguishes itself with a unique design featuring a 2" BSP union connection.

Pulsed versions, known as MWN-NK Models, are available, equipped with a reed switch and cable for wiring. Output ratios range from 10 litres per pulse to 100 litres per pulse, varying with meter size. Additionally, all models can be adjusted to meet specific ratio requirements, from 10 to 1000 litres per pulse. Similar to PoWogaz's JS and JSC ranges, MWN meters also offer an M-Bus output, making them suitable for wired or wireless M-Bus networks.

### Product Features:

<b>Compliance:</b>	MID Approved
<b>Connection Size:</b>	40-300mm
<b>Connection Type:</b>	Flanged Connection, Screwed Connection
<b>Temperature:</b>	Hot (Max Flow Temp 130°C)
<b>Communication Outputs:</b>	Pulsed

### Additional Features:

- Flat Index to accept NNK Transmitter
- Easy to read with counter rotation within 360°
- Solid and tested and simultaneously permanently improved construction



Screwed  
Connection



Flanged  
Connection



Country of Origin:  
Poland



**MWN Water  
Meter Datasheet**

Part No.	Description	Q1 Capacity	Q3 Capacity	Minimum Output Ratio
<b>Screwed Connection</b>				
<b>POWO4099</b>	MWN130-NKOP50G 2" Scrd Woltman HW 130°C	0.625m <sup>3</sup> /hr	25m <sup>3</sup> /hr	K=10L
<b>Flanged PN16 Connection</b>				
<b>POWO4100</b>	MWN130-NKOP40 Woltman Hot Water Meter 130°C	0.625m <sup>3</sup> /hr	25m <sup>3</sup> /hr	K=10L
<b>POWO4101</b>	MWN130-NKOP50 Woltman Hot Water Meter 130°C	0.625m <sup>3</sup> /hr	25m <sup>3</sup> /hr	K=10L
<b>POWO4102</b>	MWN130-NKOP65 Woltman Hot Water Meter 130°C	1m <sup>3</sup> /hr	0m <sup>3</sup> /hr	K=10L
<b>POWO4103</b>	MWN130-NKOP80 Woltman Hot Water Meter 130°C	1.575m <sup>3</sup> /hr	63m <sup>3</sup> /hr	K=10L
<b>POWO4104</b>	MWN130-NKOP100 Woltman Hot Water Meter 130°C	2.5m <sup>3</sup> /hr	100m <sup>3</sup> /hr	K=10L
<b>POWO4105</b>	MWN130-NKOP125 Woltman Hot Water Meter 130°C	4m <sup>3</sup> /hr	160m <sup>3</sup> /hr	K=10L
<b>POWO4106</b>	MWN130-NKOP150 Woltman Hot Water Meter 130°C	6.25m <sup>3</sup> /hr	250m <sup>3</sup> /hr	K=100L
<b>POWO4107</b>	MWN130-NKOP200 Woltman Hot Water Meter 130°C	10m <sup>3</sup> /hr	400m <sup>3</sup> /hr	K=100L
<b>POWO4108</b>	MWN130-NKOP250 Woltman Hot Water Meter 130°C	25.2m <sup>3</sup> /hr	630m <sup>3</sup> /hr	K=100L
<b>POWO2109</b>	MWN130-NKOP300 Woltman Hot Water Meter 130°C	40m <sup>3</sup> /h	1000m <sup>3</sup> /hr	K=1000L

**For further information or enquiries, please contact our team**

## JS Eco Water Meter

The Smart series has grown, in the pursuit of sustainability. The Smart series single-jet vane-wheel dry water meters, featuring composite bodies, are designed for accurate water consumption measurement. These modern meters ensure precise readings and support remote data communication modules for easy indication monitoring. Among dry water meters, they offer the best protection against strong magnetic fields.

Manufactured in compliance with MID standards, the JS Smart+ has a measuring range of R=100, and the JS Smart C+ has a range of R=160. The use of composite materials significantly lowers the carbon footprint and ensures that metered potable water

The JS ECO benefits from the renowned Apator quality and accuracy, but also has the added benefit of being recyclable when it does come to the end of its long life.

The ideal meter for gardens, homes, small commercial properties, or any project that requires a WRAS or MID approved water meter in sizes DN15 or DN20.

### Product Features:

<b>Compliance:</b>	MID, WRAS Approved
<b>Connection Size:</b>	15-20mm
<b>Connection Type:</b>	Screwed Connection
<b>Temperature:</b>	Cold (Max Flow Temp 50°C)
<b>Communication Outputs:</b>	Wireless M-Bus, M-Bus, Pulsed

### Additional Features:

- Flat Index to accept NNK Transmitter
- Easy to read with counter setting within 360°

Part No. Description

#### Cold Water Meters

<b>POWO0620</b>	JS 1.6-03 1/2" Qp1.6 ECO Cold Water Meter
<b>POWO0621</b>	JS 2.5-03 1/2" Qp2.5 ECO Cold Water Meter

#### Hot Water Meters

<b>POWO0625</b>	JS90 1.6-03 1/2" Qp1.6 ECO Hot Water Meter
<b>POWO0626</b>	JS90 2.5-03 1/2" Qp2.5 ECO Hot Water Meter

#### Cold Water Meters with wM-Bus

<b>POWO0650</b>	JS 1.6-03 1/2" Qp1.6 ECO Cold Water Meter with wM-Bus
<b>POWO0651</b>	JS 2.5-03 1/2" Qp2.5 ECO Cold Water Meter with wM-Bus

#### Hot Water Meters with wM-Bus

<b>POWO0655</b>	JS90 1.6-03 1/2" Qp1.6 ECO Hot Water Meter with wM-Bus
<b>POWO0656</b>	JS90 2.5-03 1/2" Qp2.5 ECO Hot Water Meter with wM-Bus



JS Eco Water  
Meter Data Sheet

Country of Origin:  
Poland

**For further information or enquiries, please contact our team**





### Product Features:

<b>Compliance:</b>	MID Class D
<b>Connection Size:</b>	15-20mm
<b>Connection Type:</b>	Screwed
<b>Temperature:</b>	Cold ( Max Flow Temp 50°C)

<b>Communication Outputs:</b>	M-Bus, Wireless M-Bus
-------------------------------	--------------------------

### Additional Features:

- Index Design for AT & APT Modules
- IP68 Rated

With an IP68 rating, the JS Smart D+ is suitable for outdoor and even underground installation, guaranteeing high accuracy in challenging environments.

## JS Smart D+ Water Meter

The Smart D+ represents the evolution of Apator PoWogaz's "Smart" series, boasting exceptional measurement accuracy, minimal water consumption, and a sleek modern design. These innovations are engineered to significantly enhance metrological precision and service life. Interoperable with clip-on communication modules, this water meter supports automatic wired or wireless meter reading. Compliant with the MID Directive, it operates within the R200 measurement range.

Applications for the Smart D+ water meter extend to cold water environments up to 50°C, suitable for single domestic settings, as well as larger multi-occupancy housing and commercial properties. Its rotating counter simplifies meter readings in various installation configurations, including horizontal pipelines with top (H) or side (H) counters, and vertical pipelines with side (V) counters.

In terms of compliance, it adheres to several regulations & standards:

- Directive 2014/32/EC of the European Parliament and Council regarding measuring instrument market harmonization.
- EN-ISO 4064-1+5:2014(E) for cold and hot potable water meters.
- OIML R49:2013 for water meters measuring cold and hot potable water.
- Environmental, climate, and mechanical condition classifications: Class B (per EN-ISO 4064-1:2014(E)).
- Mechanical environmental condition classification: Class M1, as per Directive 2014/32/EC.
- Electromagnetic environmental condition classification: Class E1, E2, as per EN-ISO 4064:2014 and Directive 2014/32/EC.
- PZH National Institute of Hygiene certification ensuring materials' suitability for potable water use.

Part No.	Description
<b>POWO93015</b>	JS 2.5 Smart D+ R200 DN15
<b>POWO93020</b>	JS 4.0 Smart D+ R200 DN20



**Smart D+ Datasheet**



Country of Origin:  
Poland

**Counter cover** to protect the counter from external impacts in the water meter's working environment.

**Hermetically -sealed counter** (with increased leakproofness) resistant to fogging, completely separated from the wet part of the water meter.

**Counter rotation lock** when turned by more than 365°.

**Water meter inlet filter** to minimise water flow disturbances and at the same time protect the metering unit from contamination.

**Dual counter reading detection system** based on the induction and optical technologies used for the single pointer, which allows the choice of module appropriate for the installation environment.

**Protection from external interference** - a counter disc with an indicator of the force applied to compress the counter glass.

**Counter cover with an additional snap ring** to protect the meter from unauthorized interference, while acting as a seal.

**Stable operation** of the metering unit and magnetic coupling system, based on several structural and material improvements.

## WI Flanged Irrigation Water Meter

The WI Irrigation Water Meters by Apator PoWogaz cater to installations where the water flow isn't entirely clean. Engineered with a robust internal mechanism, they withstand sediment and particles, accurately recording the volume passed through. Available in sizes ranging from 50mm to 250mm, they feature PN16 Flanged connection.

These meters are built to operate in temperatures up to 50°C and withstand pressures of up to 16 Bar. They find utility in various settings, including drawing water from rivers, streams, or lakes, as well as from purified outlets of sewage treatment facilities. Specifically crafted to handle contaminated fluids that could otherwise damage standard turbine impellers.

All models within the WI range offer a Volt Free Pulsed Output with a minimum output ratio of  $K=100L$ . Additionally, a 1.5-meter flylead is provided with pulsed models, facilitating easy connection to Building Management Systems (BMS) or local data logging facilities.

### Product Features:

<b>Connection Size:</b>	50-250mm
<b>Connection Type:</b>	Flanged
<b>Temperature:</b>	Cold (Max Flow Temp 50°C)
<b>Communication Outputs:</b>	Pulsed/Non Pulsed

### Additional Features:

- Easy reading of the abacus indications
- Counter mechanism with blockade against multiple rotating, at rotation angle more than 358°
- Double sided axle bearing



**WI Irrigation Water Meter Datasheet**



Country of Origin:  
Poland

Part No.	Description
<b>Flanged PN16 - Non Pulsed</b>	
<b>POWO7290</b>	WI 40-03 Flanged Irrigation Meter
<b>POWO7300</b>	WI 50-03 Flanged Irrigation Meter
<b>POWO7301</b>	WI 65-03 Flanged Irrigation Meter
<b>POWO7302</b>	WI 80-03 Flanged Irrigation Meter
<b>POWO7303</b>	WI 100-03 Flanged Irrigation Meter
<b>POWO7304</b>	WI 125-03 Flanged Irrigation Meter
<b>POWO7305</b>	WI 150-03 Flanged Irrigation Meter
<b>POWO7306</b>	WI 200-03 Flanged Irrigation Meter
<b>POWO7307</b>	WI 250-03 Flanged Irrigation Meter

Part No.	Description
<b>Flanged PN16 - NK Pulsed Output</b>	
<b>POWO7340</b>	WI 40-03-NK Flanged Irrigation Meter 1 Pulse per 100ltrs
<b>POWO7350</b>	WI 50-03-NK Flanged Irrigation Meter 1 Pulse per 100ltrs
<b>POWO7351</b>	WI 65-03-NK Flanged Irrigation Meter 1 Pulse per 100ltrs
<b>POWO7352</b>	WI 80-03-NK Flanged Irrigation Meter 1 Pulse per 100ltrs
<b>POWO7353</b>	WI 100-03-NK Flanged Irrigation Meter 1 Pulse per 100ltrs

## Need Technical Support?

Our team can assist and advise you with any questions you have and help you source the correct product from individual components through to complete solutions

**Call: 01773 534 555**





#### Additional Features:

- c/w Gasket
- The kit of unions includes:  
2 unions + 2 nuts + 2 gaskets

## Water Meter Union c/w Gasket

They are used to connect the water meter to the network. We offer sets consisting of two sleeves, two nuts and two gaskets (fiber or EPDM). In addition to the dimensions described in the table, we also offer special designs.

Part No.	Description
<b>POWO920001</b>	Pair 1/2" Water Meter Union
<b>POWO920002</b>	Pair 3/4" Water Meter Union
<b>POWO920003</b>	Pair 1" Water Meter Union
<b>POWO920004</b>	Pair 1.25" Water Meter Union
<b>POWO920005</b>	Pair 1.5" Water Meter Union
<b>POWO920006</b>	Pair 2" Water Meter Union

## Honeywell



Polymer



Brass

## V210 Concentric Water Meters

The V210 series of Water Meters builds upon the V200 Meters, differing primarily in connection style. Unlike the inline fittings of the V200, the V210 Meters feature a Screwed Manifold Connection. While commonly utilized by Utility Companies in boundary boxes throughout the UK, they are also prevalent in Secondary Metering markets.

With WRAS and MID Approval, the V210 Meters ensure safety and accuracy in most Cold Water applications. For remote data collection, a PR6 Pulse Transmitter can be employed with these meters.

The V210 range comprises three models. The V210P, with a polymer body, offers the smallest flow capacity, handling rates up to 2.5m<sup>3</sup>/hr with a 1.5" connection. The subsequent models feature brass bodies, with capacities of up to 4m<sup>3</sup>/hr (1.5" Connection) and 6.3m<sup>3</sup>/hr (2" Connection) respectively.

#### Product Features:

<b>Compliance:</b>	MID, WRAS Approved
<b>Connection Type:</b>	Screwed Manifold
<b>Temperature:</b>	Cold (Max Flow Temp 50°C)
<b>IP Rating:</b>	IP68 Rated
<b>Communication Outputs:</b>	Pulsed

Part No.	Description
<b>1.5" Polymer Body</b>	
<b>EK2F-V210P</b>	KENT V210P Dual Range Q3 2.5 R400 Meter

<b>1.5" Brass Body</b>	
<b>EK2G-V2104</b>	KENT V210 Q3 4.0 R250 Meter

<b>2" Brass Body</b>	
<b>EK2G-V2106</b>	KENT V210 Q3 6.3 R250 Meter



V210  
Datasheet



Country of Origin:  
Slovakia

## V200 Cold Water Meter

The V200 range elevates the Rotary Piston design from the V100 series. This measuring style allows for versatile installation in both horizontal and vertical orientations, with the added convenience of a rotating index head for simplified visual readings.

In addition to the user-friendly interface, V200 Meters offer compatibility with a broader range of outputs.

Available in sizes ranging from 15mm to 40mm, V200 Meters come with union connections and BSP Male threads. With a maximum operating temperature of 30°C, they are suitable for all cold water applications. Moreover, these meters hold WRAS Approval for Drinking Water installations and are MID approved for Billing purposes.



Part No.	Description
<b>EK2H-V20020</b>	KENT 20mm V200 Q3 4.0 R315 <i>(Polymer) c/w 3/4" BSPM Union</i>
<b>EK2H-V20015</b>	KENT 15mm V200 Q3 2.5 R400 <i>(Polymer) c/w 1/2" BSPM Brass Unions</i>
<b>EK2D-V20040</b>	KENT 40mm V200 Q3 16.0 R160 <i>c/w 1.5" BSPM Unions</i>
<b>EK2C-V20030</b>	KENT 30mm V200 Q3 10.0 R160 <i>(Brass) c/w 1.25" BSPM Unions</i>
<b>EK2B-V20025</b>	KENT 25mm V200 Q3 6.3 R160 <i>(Brass) c/w 1" BSPM Unions</i>
<b>EK2A-V20020</b>	KENT 20mm V200 Q3 4.0 R250 <i>(Brass) c/w 3/4" BSPM Unions</i>
<b>EK2-V20015</b>	KENT 15mm V200 Q3 2.5 R400 <i>(Polymer) c/w 1/2" BSPM Brass Unions</i>

Brass Unions



### Product Features:

**Compliance:** MID, WRAS Approved  
**Connection Size:** 15-40mm  
**Connection Type:** Screwed  
**Communication Outputs:** Pulsed



**V200 Cold Water Meter Brochure**



Country of Origin:  
Slovakia

## We take pride in our track record of successful projects that meet and exceed our clients' expectations.

Discover the benefits of innovative, industry-leading metering products and technologies and how they are being used to make a difference in real-world applications

At DMS we are proud of the projects we have delivered and showcase just some of our successes.

Find out more at [dmsltd.com/casestudies](https://dmsltd.com/casestudies)



## Ultrimis Ultrasonic Water Meters

Introducing the Ultrimis W ultrasonic water meter, boasting a plethora of patented design and technological advancements, including our exclusive “W-Sonic Technology” ultrasonic measuring method. Constructed without any materials containing heavy metals in contact with water, this meter ensures both precision and environmental safety. Our standard version is fully waterproof, and its innovative structure positions it as one of the lightest and most compact ultrasonic water meters on the market.

Designed to measure water flow and volume up to a maximum temperature of 50°C, the Ultrimis W operates on a closed-loop system, delivering full flow rates up to a maximum pressure of 16 bar (PN16). This capability proves vital, especially in scenarios requiring precise water consumption measurement and the integration of modern communication technologies like NFC and radio reading systems. Equipped with an e-display rated IP68, these water meters can be installed in any orientation (horizontal, vertical, or a combination thereof). Moreover, they eliminate the need for UOD0 straight sections, filters, or check valves.

### Product Features:

<b>Compliance:</b>	MID, WRAS Approved
<b>Connection Size:</b>	15-50mm
<b>Connection Type:</b>	Screwed
<b>Temperature:</b>	Cold (Max Flow Temp 50°C)
<b>Communication Outputs:</b>	Pulsed/Non Pulsed
<b>IP Rating:</b>	IP68 Rated

### Additional Features:

- Measurement precision: The best measurement range (R800) available on the market, in every working orientation (H, V, H/V)
- Starting flow: 0.75 l/h for DN15
- Low-pressure drop: 1 bar per 4 m<sup>3</sup>/h for DN15
- Measurement stability regardless of soiling of the measurement system elements (dedicated processing method)
- Reverse flow measurement
- Detection of any network leak

Part No.	Description
<b>POWOULT15</b>	Ultrimis Ultrasonic Water Meter - 1/2" <i>UL 2,5, L=110, R250, DN15</i>
<b>POWOULT20</b>	Ultrimis Ultrasonic Water Meter - 3/4" <i>UL 4, L=130, R250, DN20</i>
<b>POWOULT25</b>	Ultrimis Ultrasonic Water Meter - 1" <i>UL 6.3, L=165, R250, DN25</i>
<b>POWOULT25A</b>	Ultrimis Ultrasonic Water Meter - 1" <i>UL 6.3, L=260, R250, DN25</i>
<b>POWOULT32</b>	Ultrimis Ultrasonic Water Meter - 1.25" <i>UL 10, L=260, R250, DN32</i>
<b>POWOULT40</b>	Ultrimis Ultrasonic Water Meter - 1.5" <i>UL 16, L=300, R250, DN40</i>
<b>POWOULT50</b>	Ultrimis Ultrasonic Water Meter - DN50 <i>UL 25, L=200, R250, DN50</i>



Brass fitting with cover



Composite fitting



Brass fitting



Country of Origin:  
Poland



Ultrimis Ultrasonic  
Water Meter  
Datasheet

## JS/JSC Master C+ IP68 Water Meters

JS/JSC Master C+ IP68/IP65 represents a singularly efficient single-jet vane-wheel dry water meter, meticulously crafted for precise monitoring of water consumption. Its sophisticated engineering guarantees swift adaptability to varying metering conditions and steadfast resistance against potent magnetic fields. Integrated seamlessly with optical and induction data communication modules from Apator Powogaz S.A., this meter facilitates seamless automated meter reading, whether wired or wireless. Manufactured in compliance with the MID (Measuring Instruments Directive), EN14154, OIML R49, and ISO4064 standards, it offers a broad measurement range of R160.

### Application:

- Ideal for cold water supply systems (up to 50°C) in multifamily residences, industrial complexes, public facilities, and metering stations.
- With a maximum operating pressure (MOP) of 16 bar, it excels in horizontal installation orientation with the counter positioned upward (H), sideways (H), or vertically (V).
- Featuring a rotary counter with easily readable indications, it functions adeptly in diverse installation orientations.
- The standard IP68 version seamlessly integrates with induction data communication modules through the #UTIP (Universal TI Plug), while the IP65 variant supports optical and induction data communication modules, mounted using an interface ring.

### Product Features:

<b>Compliance:</b>	MID, WRAS Approved
<b>Connection Type:</b>	Screwed
<b>Temperature:</b>	Cold (Max Flow Temp 50°C)



### Additional Features:

- IP Rating - IP68
- Index Design for AT & APT Modules

Part No. Description

Flanged	
<b>POW093025</b>	JS6.3 MasterC+ R160 DN25 IP68
<b>POW093032</b>	JS10 MasterC+ R160 DN32 IP68
<b>POW093040</b>	JS16 MasterC+ R160 DN40 IP68



**JS MasterC+ IP68  
Data Sheet**



Country of Origin:  
Poland

# DMS Metering Solutions

proudly affiliated with





Pulsed Version



Non-Pulsed Version

### Additional Features:

- IP Rating: IP68 (Screwed Head)
- IP Rating: IP68 Index Head (Flanged Head)



Country of Origin:  
Poland

**MWN  
Nubis IP68  
Datasheet**



## MWN Nubis IP68 Woltman Water Meter

The MWN Nubis water meter is a horizontally oriented propeller dry meter based on the Woltman design. Its design incorporates advanced features and processing solutions, ensuring longevity and resilience against strong external electromagnetic fields. Manufactured in compliance with industry standards such as MID, EN14154, ISO4064, and OIML R49, it guarantees accuracy within its maximum measurement range of R200.

Equipped with clip-on communication modules, this water meter facilitates automatic meter reading through wired or wireless means. Its data transmission system is impervious to external electromagnetic interference, thanks to induction detection of counter readings. Additionally, a sturdy counter safety cover shields against impacts in the meter's working environment.

Measurement characteristics can be adjusted without requiring a drain duct, providing flexibility in various settings. The meter's construction materials and hydrodynamically balanced rotor, supported by a double-sided bearing, ensure consistent and reliable performance during verification intervals.

Featuring an #UTIP interface for universal induction communication modules, it allows for easy access to identification data, even with a communication module installed. With an IP68 rating and a swivel-set counter mechanism, it guarantees resilience in challenging conditions, further reinforced by a cast-iron cover with an extended counter guard.

Designed for industrial water supply systems, it accommodates cold water (up to 50°C) and hot water (up to 130°C) applications with low pressure losses and high flow rates. Installation options include horizontal with the counter upward or sideways, vertical, or orientations between horizontal and vertical.

Overall, the MWN Nubis water meter offers precise measurement, durability, and adaptability to diverse industrial environments, making it a reliable choice for water management needs.

### Product Features:

<b>Compliance:</b>	MID Approved
<b>Connection Size:</b>	40-300mm
<b>Connection Type:</b>	Screwed
<b>Temperature:</b>	Cold (Max Flow Temp 50°C)
<b>Communication Outputs:</b>	Pulsed/Non Pulsed

Part No.	Description	Q1 Capacity	Q3 Capacity	Min Output Ratio
<b>Screwed Connection</b>				
<b>POWO94000</b>	MWN-G NKOP50 2" Scrd Woltman CW Meter 50°C	0.40m <sup>3</sup> /hr	40m <sup>3</sup> /hr	K=10L
<b>Flanged PN16 Connection</b>				
<b>POWO94001</b>	MWN-NKOP40 Woltman Cold Water Meter 50°C	0.40m <sup>3</sup> /hr	40m <sup>3</sup> /hr	K=10L
<b>POWO94002</b>	MWN-NKOP50 Woltman Cold Water Meter 50°C	0.40m <sup>3</sup> /hr	40m <sup>3</sup> /hr	K=10L
<b>POWO94003</b>	MWN-NKOP65 Woltman Cold Water Meter 50°C	0.504m <sup>3</sup> /hr	63m <sup>3</sup> /hr	K=10L
<b>POWO94004</b>	MWN-NKOP80 Woltman Cold Water Meter 50°C	0.625m <sup>3</sup> /hr	100m <sup>3</sup> /hr	K=10L
<b>POWO94005</b>	MWN-NKOP100 Woltman Cold Water Meter 50°C	0.80m <sup>3</sup> /hr	160m <sup>3</sup> /hr	K=10L
<b>POWO94006</b>	MWN-NKOP125 Woltman Cold Water Meter 50°C	1.56m <sup>3</sup> /hr	250m <sup>3</sup> /hr	K=10L
<b>POWO94007</b>	MWN-NKOP150 Woltman Cold Water Meter 50°C	2.00m <sup>3</sup> /hr	400m <sup>3</sup> /hr	K=100L
<b>POWO94008</b>	MWN-NKOP200 Woltman Cold Water Meter 50°C	5.04m <sup>3</sup> /hr	630m <sup>3</sup> /hr	K=100L
<b>POWO94009</b>	MWN-NKOP250 Woltman Cold Water Meter 50°C	10.00m <sup>3</sup> /hr	1000m <sup>3</sup> /hr	K=1000L
<b>POWO94010</b>	MWN NKOP300 Woltman Cold Water Meter 50°C	16.05m <sup>3</sup> /hr	1600m <sup>3</sup> /hr	K=1000L



## WDP - Major Water Leak Detection Unit

DMS can offer the complete solution for Major Water Leak Detection. The combination of the Leak Detection Panel and our revered range of PoWogaz Water Meters will help ensure buildings and sites are properly protected from abnormal water flows. A Solenoid Shut Off Valve can also be incorporated into the design which gives the system full authority to shut off the water supply if it suspects a leak.

The Panel will also make both audible and visual alarm for the building occupants to be notified of a suspected leak, and the panel can be incorporated to signal a Building Management System for more high-tech notification of the Panel Alarm.

### Product Features:

**Compliance:** BREEAM WAT03  
**Connection Size:** 15-300mm

### Additional Features:

- Pulsed
- 2 Pulsed Inputs as standard
- Easily setup/programming via 4.3" touch screen
- Programmable for different flow rates
- Two levels of monitoring (e.g. For when building is occupied/unoccupied)
- Programmable time periods to determine alarm levels
- Automatic Setting of alarms levels via entry/alarm system or key switch

A secondary benefit of using the Major Water Leak Detection system is that this equipment provides accreditation under WAT03 of the BREEAM regulations.

### Main Features:

- 230Vac Mains Powered with battery back-up
- Either 1 or 2 water meters can be connected via pulse output
- The Pulse readings from the water meters can be repeated, allowing the BMS to also monitor the water volumes
- Water usage/leaks/pressure/temperature
- Touch Screen Display
- Various time programs and functions to suit all applications for Major Water Leak Detection"
- Not reliant on Wi-Fi at the point of installation, ensuring uninterrupted functionality.



BREEAM<sup>®</sup>



**Major Leak  
 Detection Data  
 Sheet**



Country of Origin:  
 United Kingdom

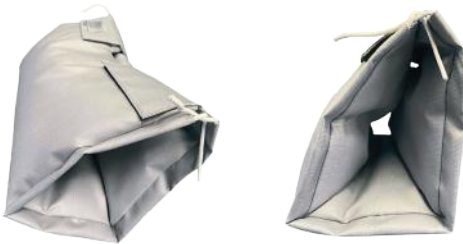
Experience peace of mind with our Smart Leak Detection System, combining cutting-edge technology with environmental responsibility.

Call our team for further information on our Leak Detection Solutions





## Insulation Jackets for Water Meters



DMS Insulation jackets for Water Meters are up to 3 times more efficient than alternative conventional insulation materials, reducing carbon footprint and energy costs on existing plants. They provide protection for the water meters from sharp objects or hot surfaces. DMS Insulated jackets can be retrofitted to enhance/replace existing plants or applied to new build applications. Also available for Heat Meters.

### Standard Features:

- NORSOK R-004 Specification
- Double Grey Silicone Inner & Outer
- 50mm Ductwrap, up to 220°C
- Velcro & Drawcord Fixing Method

### Weather Protection:

- ISO 20340:2009 weathering 4200 hours in cycles of:
  - Accelerated UV weathering
  - Neutral salt spray exposure
  - IACS UR S14.2.3 - Watertight Compartments, a requirement of NORSOK R-004, Carbon footprint reduction, Impact Resistant, Operating temperatures -36°C to +1100°C, Site time reduction, Velcro or pull cord fixings, Waterproof
- 50mm Ductwrap
- <190°C, Standard Draw Cord and Velcro

Part No. Description

Screwed	
<b>JACK2000</b>	PoWogaz Water Meter Jacket - 1/2" Screwed
<b>JACK2002</b>	PoWogaz Water Meter Jacket - 3/4" Screwed
<b>JACK2004</b>	PoWogaz Water Meter Jacket - 1" Screwed
<b>JACK2006</b>	PoWogaz Water Meter Jacket - 1.25" Screwed
<b>JACK2008</b>	PoWogaz Water Meter Jacket - 1.5" Screwed
Flanged	
<b>JACK2010</b>	PoWogaz Water Meter Jacket - DN40 Flanged
<b>JACK2012</b>	PoWogaz Water Meter Jacket - DN50 Flanged
<b>JACK2014</b>	PoWogaz Water Meter Jacket - DN65 Flanged
<b>JACK2016</b>	PoWogaz Water Meter Jacket - DN80 Flanged
<b>JACK2018</b>	PoWogaz Water Meter Jacket - DN100 Flanged
<b>JACK2020</b>	PoWogaz Water Meter Jacket - DN125 Flanged
<b>JACK2022</b>	PoWogaz Water Meter Jacket - DN150 Flanged
<b>JACK2024</b>	PoWogaz Water Meter Jacket - DN200 Flanged
<b>JACK2026</b>	PoWogaz Water Meter Jacket - DN250 Flanged
<b>JACK2028</b>	PoWogaz Water Meter Jacket - DN300 Flanged



Country of Origin:  
United Kingdom



**Water Meter Jacket Datasheet**

Insulation Jackets are also available for our range of Heat Meters - See Page 23

**DMS**  
METERING  
SOLUTIONS

UK's leading  
provider of  
**metering  
& controls**

# New from DMS

## Network Pressure Reduction & Utility Gas Metering Modules from DMS



### Industrial and Commercial Gas Meters & Regulators



**Honeywell**  
**RABO® Compact  
Gas Meter**

- Maintenance Free option
- High rangeability
- Hydrogen ready

**Honeywell**  
**HON 380 Gas  
Pressure Regulator**

- Sizes: DN25 – DN100
- Max Inlet 20 bar
- Outlet Pressure 20mb - 2 bar



01773 534555 | [meters@dmsltd.com](mailto:meters@dmsltd.com) | [dmsltd.com](http://dmsltd.com)



# Gas

Our comprehensive range of Gas Meters include Diaphragm, Turbine and Rotary Meters. A full suite of gas regulators and Solenoid Valves are also available.

Brands you  
can trust

**DMS** METERING  
SOLUTIONS

**Honeywell**

**metreg**   
Metreg Technologies GmbH

**DRESSER**

**S&S**  
NORTHERN

Honeywell Diaphragm Meters	<b>44</b>
IN-Z61 Pulse Transmitter Block & Clip	<b>45</b>
QA Quantometers Turbine Meters	<b>46-47</b>
QA Pulse Plug	<b>47</b>
RABO Rotary Gas Meters	<b>48-49</b>
IN-S10 Pulse Transmitter Lead	<b>49</b>
Roots G Series Rotary Gas Meters	<b>50-51</b>
Roots Combined Pulsar/Cable	<b>51</b>
J48 Gas Regulators	<b>52</b>
J78 Gas Regulators	<b>53</b>
J125 Gas Regulators	<b>54-55</b>
S100 Over Pressure Shut Off Valves	<b>56</b>
Witches Hat Filters	<b>57</b>
E17 Diaphragm Gas Meters	<b>57</b>
Quantometer Q/Q75	<b>58</b>
TRZ Turbine Meters	<b>58</b>
SM-RI-X Turbine Gas Meters	<b>58</b>
Rabo Compact Gas Meters	<b>59</b>
MQMe Quantometer Gas Meters	<b>60</b>
Wafer Pattern Bolt Kits/Flange Gaskets	<b>61</b>
Chatterbox-e Isolation Unit	<b>62</b>
Mini Merlin Gas Detection Panel	<b>63</b>
RSIAQ - Room Sensor (Air quality sensor)	<b>64</b>
MC2-197 PTZ Volume Converter	<b>65</b>
Honeywell Bryan Donkin Gas Equipment	<b>66-67</b>
Gas Meter Housing	<b>68</b>
MeterSit Domusnext® Thermal Mass Meters	<b>69</b>
Gas Meter Installation Kits	<b>69</b>

## Honeywell Diaphragm Gas Meters

Honeywell's range of Diaphragm Gas Meters scale from the everyday domestic BK-G4 Gas Meter that you would find in most households, right up to the BKG100 Meter that the Utility Companies use on incoming supplies to large buildings. These Meters are MID approved giving them the ability to be used on Billing applications and also have extraordinary flow performance down to the smallest amount of gas.

The smaller BK-G Meters from 20 - 50mm all use a union connection, which are supplied alongside each Meter. From 65mm to 100mm a PN16 Flanged connection is supplied. All of the Diaphragm Meters are connected through the U shape design with inlets on top of the Meter.

Each BK-G Gas Meter has a mechanical index for the meter reading itself but they can also be paired up with an IN-Z61 Pulse Transmitter (see opposite page) in order to send data remotely. Higher specification of



communication can also be offered with M-Bus outputs and also Digital readouts for easier Meter reading. There is also a model that offers temperature compensation for the highest accuracy of monitoring.

The standard use for this range is to monitor Natural Gas supplies but these meters can also be used with LPG gas systems as well. The maximum operating pressure of gas that can be monitored is 500mbar.

### Standard Features:

**Compliance:** MID Approved  
**Connection Size:** 20-100mm

**Connection Type:** Flanged, Screwed  
**Communication Outputs:** Pulsed, M-Bus

Part No.	Description	Max Capacity
<b>Gas Screwed (BS EN 1359)</b>		
<b>GASKIT1198</b>	Elster BK-G4 (U6) 3/4" Natural Gas	6m3/hr
<b>ELST0061</b>	Elster BK-G6/U10 1" Natural Gas, Diaphragm Meter	10m3/hr
<b>GASKIT1200</b>	Elster BKG10/U16 1.25" Gas Meter	16m3/hr
<b>GASKIT1205</b>	Elster BKG16/U25 2" Gas Meter	25m3/hr
<b>GASKIT1210</b>	Elster BKG25/U40 2" Gas Meter	40m3/hr
<b>Gas Flanged PN16 (BS EN 1359)</b>		
<b>GASKIT1215</b>	Elster BKG40/U65 2.5" Gas Meter	65m3/hr
<b>GASKIT1220</b>	Elster BKG65/U100 3" Gas Meter	100m3/hr
<b>GASKIT1225</b>	Elster BKG100/U160 4" Gas Meter	160m3/hr



Country of Origin:  
Slovakia



**BK-G4**  
Datasheet



**BK-G6**  
Datasheet



**BK-G10/BK-G16**  
Datasheet



**BK-G25**  
Datasheet



**BK-G40/BK-G65**  
**BK-G100**  
Datasheet

**For further information or enquiries, please contact our team**

# Honeywell

Gas



## IN-Z61 Pulse Transmitter Block & Clip

The IN-Z61 can retrofit to any BK-G Diaphragm Gas Meter with an "M" style index. This relates to the mechanical rollercounter design as shown in the images attached. The IN-Z61 will pick up the pulse from the Meter to then transmit further, for specific pulse ratios please review the BK-G Gas Meter Data Sheet relevant to the model you are using.

The 5mtr cable that comes with the Transmitter has an RJ11 connection at one end which plugs into the IN-Z61 itself. The other end is open wiring to allow connection into a BM 5 panel or remote totaliser. The cable will have 4 cables as the IN-Z61 does also have a tamper alarm. There are 2 possible cable versions with regards to colour coding:

### Option 1

- Yellow Wire - Tamper Alarm
- Green Wire - Pulse
- Brown Wire - Pulse
- White Wire - Tamper Alarm

### Option 2

- Yellow Wire - Tamper Alarm
- Green Wire - Pulse
- Red Wire - Pulse
- Black Wire - Tamper Alarm

**DMS supply Option 2 for the most part.**

### Standard Features:

Communication Outputs: Pulsed



**IN-Z61 Pulse Transmitter Datasheet**



Country of Origin:  
Slovakia

Part No.	Description
<b>GASKIT1230</b>	IN-Z61 Pulse Transmitter Block & Clip
<b>ELST0088</b>	SIC0505 IN-Z 61 Pulse Cable 5m
<b>IN-Z61-5MTR</b>	IN-Z61 Pulse Transmitter & 5mtr Cable

# DMS Metering Solutions

proudly affiliated with



## QA Quantometers Turbine Gas Meters

The QA Quantometers are Turbine Gas Meters manufactured by Honeywell. Their size range starts at 25mm and runs up to 150mm. The smaller meters from 25 to 40mm are all supplied with a BSP Female Threaded connection with unions. Then from 50mm and above, all Meters are supplied as standard with a PN16 Flanged connection with a Wafer type design. Fixing Bolts are supplied as standard with each QA Gas Meter. Their measuring principle is all down to the Turbine Wheel which spins in proportion to the volume of Gas that has passed through the Meter.

This reading is displayed as standard on a 7 Digit Mechanical Index which can be rotated for an easier visual reading of the data when using the Meter in either horizontal or vertical lengths of pipework. A Low Frequency Pulse Output is also supplied as standard for transmitting data to a remote reading service or Building Management System. When specially ordered from the factory, the QA Meters can be fitted with a medium frequency pulse output. This provides higher resolution data for monitoring the flow rate by third party devices.

The versatility of the QA Meters is shown in their high measuring ranges and pressure tolerances twinned with their compact design and robust construction. The combination of all of these points gives the QA Meters suitability to be used on a wide variety of Gas installations, including supplies that use Natural Gas, Liquefied Petroleum Gas and Manufactured Gases. Filtration is advised in order to protect the Turbine Wheel from harmful particles that could cause potential damage and obstruction to the operation of the QA Meters. Witches Hat Commissioning Filters are available alongside more permanent Pad style Gas Filters.

Part No. Description

### Screwed (BSPF Union Connections)

<b>ELST1001</b>	QA10 1" Turbine Gas Meter 1.6 - 16m <sup>3</sup> /hr
<b>ELST1002</b>	QA16 1" Turbine Gas Meter 2 -25m <sup>3</sup> /hr
<b>ELST1003</b>	QA25 1" Turbine Gas Meter 2.5-40m <sup>3</sup> /hr
<b>ELST1004</b>	QA40 1" Turbine Gas Meter 3.3-65m <sup>3</sup> /hr
<b>ELST1005</b>	QA40 1.5" Turbine Gas Meter 5-65m <sup>3</sup> /hr

### Standard Features:

<b>Connection Size:</b>	25-150mm
<b>Connection Type:</b>	Flanged, Screwed
<b>Communication Outputs:</b>	Pulsed



QA10



QA25



QA40



QA65 Flanged



QA Datasheet



Country of Origin:  
Slovakia

# Honeywell



QA100 Flanged



QA160 Flanged



QA250 Flanged

Part No.	Description
----------	-------------

### Flanged PN16 (Wafer Patterns)

<b>ELST1010</b>	QA65 50mm Turbine Gas Meter 6-100m <sup>3</sup> /hr
<b>ELST1020</b>	QA100 80mm Turbine Gas Meter 10-160m <sup>3</sup> /hr
<b>ELST1025</b>	QA160 80mm Turbine Gas Meter 13-250m <sup>3</sup> /hr
<b>ELST1028</b>	QA250 80mm Turbine Gas Meter 20-400m <sup>3</sup> /hr
<b>ELST1030</b>	QA250 100mm Turbine Gas Meter 20-400m <sup>3</sup> /hr
<b>ELST1032</b>	QA400 100mm Turbine Gas Meter 32-650m <sup>3</sup> /hr
<b>ELST1040</b>	QA400 150mm Turbine Gas Meter 32-650m <sup>3</sup> /hr
<b>ELST1045</b>	QA650 150mm Turbine Gas Meter 50-1000m <sup>3</sup> /hr
<b>ELST1048</b>	QA1000 150mm Turbine Gas Meter 80-1600m <sup>3</sup> /hr



QA400 Flanged

**For further information or enquiries, please contact our team**

## QA Pulse Plug

The QA pulse plug and lead can retrofit to any QA Gas Meter. The QA pulse plug and lead will pick up the pulse from the Meter to then transmit further, for specific pulse ratios please review the QA Gas Meter Data Sheet relevant to the model you are using.

The 2mtr lead is pre-wired into the QA pulse plug, which is a 3 pin plug.



### Standard Features:

Communication Outputs: Pulsed



Country of Origin:  
Slovakia

Part No.	Description
<b>ELST1050</b>	QA Pulse Plug with 2 mtr Prewired cable E1

## RABO Rotary Gas Meters



The evolution of the Rotary Gas Meters by Honeywell have all been combined into the latest range, the RABO. By utilising key features and benefits from the previous RVG, IRM and other previous models, the combination of these designs means the RABO is ready to handle a large scale of applications at a competitive cost with future proof design characteristics. The Rotary Displacement principle entails the use of two impellers that rotate in sequence without touching one another. Each rotation is proportional to a set volume of Gas that is passed through the Meter.

A reducing gear then transfers this data up to the 8 digit mechanical index for a visual reading of the Gas that has passed. Alongside the visual reading, a Low Frequency Pulse Output is supplied as standard which can communicate the data to be picked up by a Building Management System or another form of Automatic Meter Reading. Other options are available such as a High Frequency Pulse Output for more precise data collection and also an S1D encoder which can transmit Data through an M-Bus connection. The RABO Range is available in sizes from 32mm up to 150mm with Flanged PN16 Connection.

The accuracy of the RABO Gas Meters is so high that conventional lengths of straight run pipe on the inlet of the Meter are not essential in their requirements. They also have the flexibility to be installed in either horizontal or vertical installations with the possibility of rotating the Meter index in order to get a more comfortable read of the Meters visually. The Flow

Ranges of the RABO Meters allows accurate Gas Measurement even when a system has a high turndown ratio or fluctuating levels of Flow Rate. With MID Approval, they can also be used for Billing applications as well as standard Gas Monitoring. With a standard specification for Natural Gas applications, the RABOs can also be used with Liquefied Petroleum Gas and Manufactured Gases as well.

### Standard Features:

<b>Compliance:</b>	MID Approved
<b>Connection Size:</b>	32-150mm
<b>Connection Type:</b>	Flanged
<b>Temperature:</b>	-25°C to +70°C
<b>Communication Outputs:</b>	M-Bus, Pulsed

### Additional Features:

- S1D Index
- IN-S10 Pulse output and lead
- Filter recommended to protect Meter
- Index can be rotated for horizontal and vertical installation flexibility.



**RABO Datasheet**



Country of Origin:  
Slovakia



# Honeywell

Part No.	Description	Capacity
<b>ELST3100</b>	RABO/G16 DN32 Rotary Gas Meter	0.8-25m <sup>3</sup> /hr
<b>ELST3101</b>	RABO/G25 DN32 Rotary Gas Meter	0.6-40m <sup>3</sup> /hr
<b>ELST3102</b>	RABO/G40 DN32 Rotary Gas Meter	0.6-65m <sup>3</sup> /hr
<b>ELST3103</b>	RABO/G65 DN32 Rotary Gas Meter	0.6-100m <sup>3</sup> /hr
<b>ELST3396GI</b>	RABO/G16 DN40 Rotary Gas Meter	0.8-25m <sup>3</sup> /hr
<b>ELST3397GI</b>	RABO/G25 DN40 Rotary Gas Meter	0.6-40m <sup>3</sup> /hr
<b>ELST3398GI</b>	RABO/G40 DN40 Rotary Gas Meter	0.6-65m <sup>3</sup> /hr
<b>ELST3399GI</b>	RABO/G65 DN40 Rotary Gas Meter	0.6-100m <sup>3</sup> /hr
<b>ELST3400GI</b>	RABO/G16 DN50 Rotary Gas Meter	0.8-25m <sup>3</sup> /hr
<b>ELST3402GI</b>	RABO/G25 DN50 Rotary Gas Meter	0.6-40m <sup>3</sup> /hr
<b>ELST3404GI</b>	RABO/G40 DN50 Rotary Gas Meter	0.6-65m <sup>3</sup> /hr
<b>ELST3406GI</b>	RABO/G65 DN50 Rotary Gas Meter	0.6-100m <sup>3</sup> /hr
<b>ELST3408GI</b>	RABO/G100 DN80 Rotary Gas Meter	1-160m <sup>3</sup> /hr
<b>ELST3410GI</b>	RABO/G160 DN80 Rotary Gas Meter	1.6-250m <sup>3</sup> /hr
<b>ELST3412GI</b>	RABO/G250 DN80 Rotary Gas Meter	2.5-400m <sup>3</sup> /hr
<b>ELST3414GI</b>	RABO/G160 DN100 Rotary Gas Meter	1.6-250m <sup>3</sup> /hr
<b>ELST3416GI</b>	RABO/G250 DN100 Rotary Gas Meter	2.5-400m <sup>3</sup> /hr
<b>ELST3142</b>	RABO/G400 DN100 Rotary Gas Meter	4-650m <sup>3</sup> /hr
<b>ELST3151</b>	RABO/G400 DN150 Rotary Gas Meter	4-650m <sup>3</sup> /hr



**For further information or enquiries, please contact our team**



Country of Origin:  
Slovakia



## IN-S10 Pulse Transmitter & Lead (2.5m)

The IN-S10 pulse generators feature a series connection per channel, consisting of a reed switch and a resistor. A magnet located inside the gas meter index drives the reed switch.

Typically, the magnet's rotation aligns with the rotation of the last digit roller of the mechanical index. Each time the magnet activates the reed switch, it closes the electrical circuit, generating one pulse per closure.

### Additional Info:

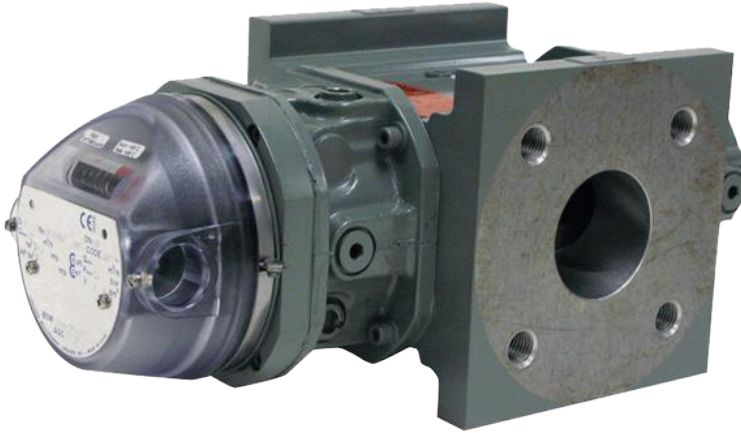
- Additional Accessory
- For use with RABO and Q75 Gas Meters

Part No.	Description
<b>ELST39INS10</b>	IN-S10 Pulse Transmitter & Lead 2.5m

## Can't find what you are looking for?

Our team can assist and advise you with any questions you have and help you source the correct product from individual components through to complete solutions

**Call: 01773 534 555**



## ROOTS G Series Rotary Gas Meter

For many years, the ROOTS design of Gas Meters has provided high-quality equipment for measuring and monitoring Gas supplies. Over this time improvements have been made which keeps the G Series of Rotary Gas Meters, manufactured by Dresser, as one of the top models to use in a wide variety of Gas installations. The measuring of Gas by using two impellers rotating in accordance with each other allows for very accurate readings. Each rotation of the impellers is relative to a set volume of Gas that has flowed through the Meter. Under this design, the Meter can read at times of low flow and also when the duty is fluctuating up and down.

All of the G Series Gas Meters are supplied as standard with a Low-Frequency Pulse Output. The Pulse Transmitter installs into the side of the mechanical index display in order to connect the Meter for Automatic Meter Reading. The Witches Hat Filter\* is to be installed on the inlet of the Gas Meter to prevent harmful particles and foreign matter from entering the Meter internals and cause issues with the impellers. Sizes of the G Series start at 50mm and are available up to 200mm, all with a flanged PN16 Connection. Installation is possible in both horizontal and vertical runs of pipework. For the largest sizes of G650 and G1000, the flow direction must be specified (e.g. left to right, top to bottom etc.)

\*Witches Hat filters can be supplied separately at extra cost.

### Standard Features:

<b>Compliance:</b>	MID Approved
<b>Connection Size:</b>	50-200mm
<b>Connection Type:</b>	Flanged
<b>Communication Outputs:</b>	Pulsed

### Additional Features:

- LF Pulse
- UNIFLOW

### Top Hat Filters

Witches Hat filters can be supplied separately at extra cost. See Page 57



Country of Origin:  
United States

**For further information or enquiries, please contact our team**



Part No.	Description	Flow Range
<b>DRESG16/8C</b>	Roots G16/8C (G16) DN50 Rotary Gas Meter	1.1-25m3/hr
<b>DRESG25/15C</b>	Roots G25/15C (G25) DN50 Rotary Meter	1.2-40m3/hr
<b>DRESG40/2M</b>	Roots G40/2M (G40) DN50 Rotary Meter	1.3-65m3/hr
<b>DRESG65/3M</b>	Roots G65/3M (G65) DN50 Rotary Meter	1.4-100m3/hr
<b>DRESG100/G65</b>	Roots G100/5M (G100) DN80 Secondary Rotary	1.4-160m3/hr
<b>DRESG160/9M-3</b>	Roots G160/9M (G160) DN80 Rotary Meter	1.6-250m3/hr
<b>DRESG160/9M-4</b>	Roots G160/9M (G160) DN100 Rotary Meter	1.7-250m3/hr
<b>DRESG250/16M</b>	Roots G250/16M (G250) DN100 Rotary Meter	2.5-450m3/hr
<b>DRESG400/23M-4</b>	Roots G400/23M (G400) DN100 Rotary Meter	1.8-650m3/hr
<b>DRESG400/23M-6</b>	Roots G400/23M (G400) DN150 Rotary Meter	1.8-650m3/hr
<b>DRESG650/23M*</b>	Roots G650/38M (G650) DN150 Rotary Meter	3.1-1075m3/hr

\* Please specify flow direction



Dresser Roots  
Rotary Meters  
Datasheet

For further information or enquiries, please contact our team



## Dresser ROOTS 2mtr Combined Pulsar /Cable

The Dresser Natural Gas Solutions (NGS) Reed Low Frequency Pulse Transmitter is designed to be used in combination with Roots® Rotary Displacement B Series Gas Meters and is suitable for connection to Dresser® Electronic Volume Correctors, such as the model 197 PTZ +log and pulse isolation devices such as the Dresser® Chatterbox-e, model 103 along with many other hazardous area approved products.

### Additional Info:

- Encapsulated "Reed" switch design
- NO (normally open), magnetically activated by the meter index
- Simple two wire direct current connection
- Non-intrusive external fitment to the meter index
- Drill holes for lock wire sealing

Part No.	Description
<b>DRESCA0001</b>	Dresser ROOTS 2mtr Combined Pulsar/Cable



Country of Origin:  
United States

## J48 Low Pressure Gas Regulator

When it comes to regulating Gas pressures, the J48 is a well-known product, recognised by most engineers. Manufactured by Honeywell, the J48 works to control Low-Pressure installations to the highest quality. All of the J48 Regulators work by an internal impulse to sense the inlet pressure of gas entering and act accordingly to supply the original outlet pressure set. The J48s are available with a threaded BSP Female connection from 20mm up to 80mm and with a Flanged PN16 connection from 65mm up to 150mm. All J48 regulators can be installed in either horizontal or vertical runs of pipework.

The maximum inlet pressure that J48 Regulators can take is 350mbar, with a maximum outlet pressure of 160mbar. The 100mm and 150mm regulators can be set higher than this with a maximum outlet pressure of 345mbar. The quick-release spring adjusters allow for a simple and easy setting of the outlet pressure without the need to dismantle important parts of the regulator. At the same time the unit can be sealed up to provide tamper-prevention control and stop any unauthorised access to the outlet pressure control.

The J48 Regulators have Full Positive Lock Up capability to close the regulator when the demand stops or if the pressure gets too close to the outlet pressure setting, in order to protect equipment further downstream.

### Standard Features:

<b>Connection Size:</b>	20-150mm
<b>Connection Type:</b>	Flanged, Screwed
<b>Temperature:</b>	-20°C to +70°C

### Additional Features:

- Fitted Spring 12-25mbar (5-10WG)
- Full Positive Lock Up
- Horizontal & Vertical Mounting
- Fully inlet pressure balanced
- Quick release spring adjustment

### Suitable Applications:

- Natural Gas
- Liquefied Petroleum Gas
- Manufactured Gases

Part No.	Description
----------	-------------

#### Screwed Connection

<b>J5-J48-1</b>	J48 3/4" Regulator Max Inlet 350mbar
<b>J5-J48-2</b>	J48 1" Regulator Max Inlet 350mbar
<b>J5-J48-3</b>	J48 1.25" Regulator Max Inlet 350mbar
<b>J5-J48-4</b>	J48 1.5" Regulator Max Inlet 350mbar
<b>J5-J48-5</b>	J48 2" Regulator Max Inlet 350mbar
<b>J5-J48-6</b>	J48 2.5" Regulator Max Inlet 350mbar
<b>J5-J48-7</b>	J48 3" Regulator Max Inlet 350mbar



Screwed Connection



Flanged Connection



**J48 20-50mm Datasheet**



**J48 65-150mm Datasheet**

Part No.	Description
----------	-------------

#### Flanged PN16 Connection

<b>J5-J48-8</b>	J48 DN65 Regulator Max Inlet 350mbar
<b>J5-J48-9</b>	J48 DN80 Regulator Max Inlet 350mbar
<b>J5-J48-A</b>	J48 DN100 Regulator Max Inlet 350mbar
<b>J5-J48-B</b>	J48 DN150 Regulator Max Inlet 350mbar

Country of Origin:  
Slovakia



## J78 Medium Pressure Gas Regulator

If Gas Pressure needs to be controlled on small, domestic systems then the J78 Range is a compact and economical range of Gas Regulators manufactured by Honeywell. The J78 can be supplied in a 15mm, 20mm and 25mm version, all with a BSP Female threaded connection. These Gas Regulators are ideal to fit into tight spaces as they can be installed in either horizontal or vertical planes of pipework.

The J78 uses internal pressure sensing to control inlet pressures up to 350mbar down to a safer, lower pressure of up to 40mbar. Certain sizes of the J78 can allow outlet pressures slightly higher than this up to 46mbar. The spring table on the datasheet will show this in greater detail. All J78 regulators are suitable for use with Natural, Liquefied Petroleum, and Manufactured Gases. Similar to the J48 from Honeywell, the J78 has features such as positive lock-up for when the flow rate drops down to ensure the safety of devices further downstream. The J78R has a plain connection on the breather port itself and the J78RS features a 1/4" Female threaded connection on the port.



J78R



J78RS

### Suitable Applications:

- Natural Gas
- Liquefied Petroleum Gas
- Manufactured Gases

### Additional Features:

- BSP Female threaded connection
- Full Positive Lock Up
- Horizontal & Vertical Mounting
- Fully inlet pressure balanced
- Quick release spring adjustment
- Fitted Spring



Country of Origin:  
Slovakia



**J78 Medium Pressure Gas Regulator Range**

### Standard Features:

Connection Size:	1/2" - 1"
Connection Type:	Flanged, Screwed
Temperature:	-20°C to +70°C

### Additional Features:

- Max Inlet 350mbar
- 1/4" breather Hole

Part No. Description

J78R	
<b>J4-J78R</b>	J78R 1/2" Regulator Max Inlet 100mbar 15-23mbar
<b>J4-J78R1</b>	J78R 3/4" Regulator Max Inlet 100mbar 15-23mbar
<b>J4-J78R2</b>	J78R 1" Regulator Max Inlet 100mbar 20-24mbar
J78RS	
<b>J4-J78RS</b>	J78RS 1/2" Regulator Max Inlet 350mbar 10-20mbar
<b>J4-J78RS1</b>	J78RS 3/4" Regulator Max Inlet 350mbar 10-20mbar
<b>J4-J78RS2</b>	J78RS 1" Regulator Max Inlet 350mbar 13-26mbar

## J125 Medium Pressure Gas Regulator

The J125 range of Gas regulators from Honeywell are rated for medium pressure applications with a maximum inlet pressure of 8.6Bar. Available in sizes 20mm, 25mm, 40mm and 50mm with a threaded BSP Female connection and the option of a PN16 Flanged connection for the 50mm version, the J125 can also be supplied with built in Over Pressure and Under Pressure Shut Off to protect equipment downstream of the regulator. Should the outlet pressure reach a certain point that trips off either the OPSO or UPSO, then the regulator will slam shut to impede Gas flow. Once the system is pressurised back to the design conditions, the regulator can be reset manually to allow Gas to flow through again.

For the smaller 20mm and 25mm models, the maximum outlet pressure can be set as high as 140mbar. The largest models at 40mm and 50mm can be set to provide outlet pressures up to 350mbar. A full or limited capacity relief valve can be fitted into all models of the J125 to provide further control over the outlet pressure. The relief valve function will vent Gas when necessary in order to reduce the pressure down to that which is set at the regulator. The Gas needs to be piped to a safe location such as the atmosphere. A multitude of J125 versions are available that combine the options of the capacity relief valves and the OPSO/ UPSO functions all together, giving a variety of choices to suit all Medium Pressure Gas installations.

In order to size the correct J125, the inlet pressure, outlet pressure and flow rate duty must be known to size up all relevant parts, along with any further requirements for slam shut safety and capacity relief.

### Standard Features:

<b>Connection Size:</b>	20-50mm
<b>Connection Type:</b>	Flanged, Screwed
<b>Temperature:</b>	-20°C to +60°C



Country of Origin:  
Germany/Slovakia



Screwed Connection

Flanged Connection



### Additional Features:

- Threaded BSP Female connection
- Full Positive Lock Up

### Suitable Applications:

- Natural Gas
- Liquefied Petroleum Gas
- Manufactured Gases



**J125 20-25mm**  
Data Sheet



**J125 40-50mm**  
Data Sheet

# Honeywell

## J125-S1 Gas Regulator

### Additional Features:

- No OPSSO
- No Limited Relief

Part No.	Description
<b>Screwed Connection</b>	
<b>J7-J125-S1-1</b>	J125-S1 3/4" Regulator <i>Screwed Rc 3/4" Connection</i>
<b>J7-J125-S1-2</b>	J125-S1 1" Regulator <i>Screwed Rc 1" Connection</i>
<b>J7-J125-S1-3</b>	J125-S1 1.5" Regulator <i>Screwed Rc 1.5" Connection</i>
<b>J7-J125-S1-4</b>	J125-S1 2" Regulator <i>Screwed Rc 2" Connection</i>
<b>Flanged PN16 Connection</b>	
<b>J7-J125-S1-5</b>	J125-S1 DN50 Regulator

## J125-S9 Gas Regulator

### Additional Features:

- Limited Relief + OPSSO & UPSO

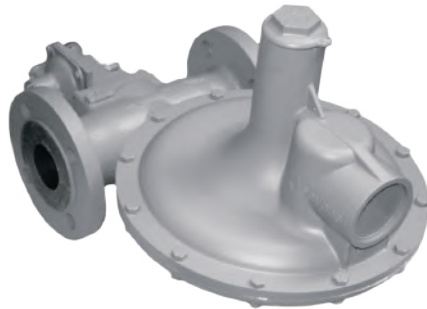
Part No.	Description
<b>Screwed Connection</b>	
<b>J7-J125-S9-1</b>	J125-S9 3/4" Regulator <i>Screwed Rc 3/4" Connection</i>
<b>J7-J125-S9-2</b>	J125-S9 1" Regulator <i>Screwed Rc 3/4" Connection</i>
<b>J7-J125-S9-3</b>	J125-S9 1.5" Regulator <i>Screwed Rc 3/4" Connection</i>
<b>J7-J125-S9-4</b>	J125-S9 2" Regulator <i>Screwed Rc 3/4" Connection</i>
<b>Flanged PN16 Connection</b>	
<b>J7-J125-S9-5</b>	J125-S9 DN50 Regulator

## J125-S5 Gas Regulator

### Additional Features:

- Limited Relief + OPSSO

Part No.	Description
<b>Screwed Connection</b>	
<b>J7-J125-S5-1</b>	J125-S5 3/4" Regulator <i>Screwed Rc 3/4" Connection</i>
<b>J7-J125-S5-2</b>	J125-S5 1" Regulator <i>Screwed Rc 3/4" Connection</i>
<b>J7-J125-S5-3</b>	J125-S5 1.5" Regulator <i>Screwed Rc 3/4" Connection</i>
<b>J7-J125-S5-4</b>	J125-S5 2" Regulator <i>Screwed Rc 3/4" Connection</i>
<b>Flanged PN16 Connection</b>	
<b>J7-J125-S5-5</b>	J125-S5 DN50 Regulator



For further information or enquiries, please contact our team

## Training tailored to you

Join us for bespoke metering, controls  
and data collecting training

Heat, Water & Gas Metering | Data Collection | Safety & Controls

Book online at [dmsltd.com/training](https://dmsltd.com/training) or [dmsltd.com/cpd-training](https://dmsltd.com/cpd-training)

## S100 Over Pressure Shut Off Valve

The S100 Valve offers protection for Gas Supplies against dangerous conditions that can cause High Pressures. By using an external impulse downstream of the regulating equipment, the S100 will rapidly shut off should the pressure sensed reach the preset trip off pressure. The Valve can then be manually reset after it has been closed off with an incorporated pressure equalising valve to guarantee a safe re-arming procedure. This also eliminates costly bypass requirements.

The S100 is available in sizes of 50mm, 80mm and 100mm models, all with Flanged PN16 Connection. The trip off pressures then vary from as low as 18mbar up to 1.4Bar for the standard models and then a HP Version is available for each connection size that can be set to trip off with pressures up to 6Bar. The maximum pressure of gas that the S100 can physically withstand is 19Bar.

The range of S100 Valves can be mounted in any orientation and maintain correct operation. There are no strict requirements of straight pipe on the inlet to the valve so the installation of the S100s can be made in a wide array of applications.

### Low Pressure Shut Off Valves

#### Additional Features:

- Max Inlet 19bar (275 psig)
- Slam Shut Pressures upto 560mbar
- Spring 36-70 mbar

Part No.	Description
<b>J9A-S100/LP</b>	S100/LP DN50 SlamShut
<b>J9B-S100/LP</b>	S100/LP DN80 SlamShut
<b>J9C-S100/LP</b>	S100/LP DN100 SlamShut

### Medium Pressure Shut Off Valves

#### Additional Features:

- Max Inlet 19bar (275 psig)
- Slam Shut Pressures 561-1400m bar
- Spring needs to be selected

Part No.	Description
<b>J9C-S100/MP1</b>	S100/MP DN50 SlamShut
<b>J9C-S100/MP2</b>	S100/MP DN80 SlamShut
<b>J9C-S100/MP3</b>	S100/MP DN100 SlamShut



#### Standard Features:

<b>Connection Size:</b>	PN16 Flanged
<b>Connection Size:</b>	50-100mm
<b>Connection Type:</b>	Flanged, Screwed
<b>Temperature:</b>	-20°C to +60°C

#### Suitable Applications:

- Natural Gas
- Liquefied Petroleum Gas
- Manufactured Gases



**S100**  
Datasheet



Country of Origin:  
Germany

### Large Pressure Shut Off Valves

#### Additional Features:

- Max Inlet 19bar (275 psig)
- Slam Shut Pressures 1-6barg (4.5-87psig)

Part No.	Description
<b>J9D-S100/HP</b>	S100/HP DN50 SlamShut
<b>J9E-S100/HP</b>	S100/HP DN80 SlamShut
<b>J9F-S100/HP</b>	S100/HP DN100 SlamShut





Country of Origin:  
United Kingdom



Top Hat Filter  
Datasheet

## Witches Hat Filters

Witches Hat Filters (Temporary strainers) are designed for use during the commissioning or start-up period of installation. They protect the control equipment in the system from dirt, debris and any other foreign bodies that may pass through a new system. The Filter is added to a new system at the time of installation and removed after the system has been cleansed. Witches Hat Filters are easy to fit and are located between the mating flanges in the pipeline - If you are adding a Commissioning filter to a vertically installed meter, we recommend adding a filter to both the inlet and outlet.

### Standard Features:

Connection Size: 50-200mm (2"-8")

Part No. Description

**IMET2001** 2" DN50

**IMET2002** 3" DN80

**IMET2003** 4" DN100

**IMET2004** 6" DN150

**IMET2006** 8" DN200

## Honeywell



### Additional Info:

- Maintenance-free design
- Low power battery-driven device with advanced battery diagnostics supporting long battery life up to 20 years lifetime
- Preconfigured delivery enabling the easiest possible installation
- Energy-efficient integrated low-power NBloT & GSM/GPRS WAN communication
- Electronic temperature compensation



Country of Origin:  
Germany

## E17 Diaphragm Gas Meters

Honeywell's commercial diaphragm gas meters (CDM) BK-G10, BK-G16, and BK-G25, along with industrial diaphragm gas meters (IDM) BK-G40, BK-G65, and BK-G100, merge innovative design with decades of gas measurement expertise. Operating on pneumatic control principles, the measuring unit ensures minimal noise, sustained stability, and exceptional accuracy.

The Honeywell BK-Series of diaphragm gas meters (DGM) surpasses stringent accuracy and safety requirements. Furthermore, the electronic index (E17) facilitates seamless smart metering via standard interfaces and protocols. With advanced features, customers can confidently transition to the next level of gas measurement efficiency.

Part No. Description

### Screwed Connection

**GASKIT1280** Elster E17 BK-G10E 1.25" E17 AMR Gas Meter  
*16m<sup>3</sup>/hr Max Capacity,*

**GASKIT1282** Elster E17 BK-G16E 2" E17 AMR Gas Meter  
*25m<sup>3</sup>/hr Max Capacity,*

**GASKIT1284** Elster E17 BK-G25E 2" E17 AMR Gas Meter  
*40m<sup>3</sup>/hr Max Capacity,*

## Q/Q75 Quantometer

Honeywell Quantometers represent a pinnacle of reliability in turbine gas metering, serving diverse industrial needs with precision. These meters play a vital role in gauging both flow rates and consumption across various industrial settings, meeting stringent standards for non-fiscal metering requirements.

The Q/Q75 series caters predominantly to robust industrial environments, with the Q Type designed for sizes up to DN150/6" and the Q75 spanning from DN200/8" to DN600/24". For lighter industrial usage, the Quantometers QA/QAe models are recommended, ensuring optimal performance.

In fiscal applications, Honeywell offers a suite of approved meters such as the TR22 and SM-RI-X turbine meters, along with the RABO rotary gas meter, meeting the stringent regulatory requirements for fiscal metering.



**Honeywell**

Country of Origin:  
Germany



## TRZ Turbine Meter

The TR22 turbine meter stands as the benchmark within the realm of mechanical gas flow meters. Renowned for its exceptional metrological accuracy, rugged construction, and unparalleled durability, it sets the standard for reliability and performance in its class.



**Honeywell**

Country of Origin:  
Germany



## SM-RI-X Turbine Gas

The Honeywell Elster SM-RI-X turbine gas meters epitomize resilience, engineered to thrive in the most challenging environments, be it offshore or onshore. With a track record spanning decades, they boast unwavering accuracy from initial calibration throughout their extensive lifespan. Their enduring measurement stability and unparalleled reliability have elevated them to the status of industry standard in high-volume gas measurement.

These meters are trusted by prominent calibration laboratories worldwide, chosen as the reference meters of preference, owing to their unmatched long-term performance and reliability.



**Honeywell**

Country of Origin:  
Germany



**For further information or enquiries, please contact our team**

# Honeywell



## RABO Compact Gas Meter

Honeywell have created a compact version of their RABO Gas Meters to suit smaller applications. The RABO Compact brings with it a smaller foot-print with its physical size as well as requiring a smaller area for installation. The Rotary measuring principle means the meter does not require any straight pipe inlet lengths. It also offers options of threaded screwed connections, in addition to flanged connections.

The Compact meter has MID approval, just like the larger versions of the RABO gas range, which means it can be used in fiscal and billing scenarios.

The standard model will be supplied with the IN-S10 Pulse Transmitter to enable remote reading of data. This also allows the RABO Compact meter to be used with Electronic Volume Converters, such as the EK205, EK220 and EK280 devices from the Honeywell range.

With a rotating index, the RABO Compact can be used in both horizontal and vertical orientations, and is IP67 rated so installation outdoors is feasible.

### Additional Features:

- Available in meter sizes G10 to G40, with flow rates from 0.25 to 65 m<sup>3</sup>/h.
- Nominal sizes DN 25 to DN 50, with pressure ratings PN 10/16 and Class 150 in accordance with ASME B 16.5.
- Temperature range from -25°C to +70°C.
- Measuring ranges up to 1:200\*.
- Aluminum housing available as Flange or Throat version, ensuring durability.
- Compact dimensions and a 5-year maintenance interval enhance convenience.
- Index can be rotated for horizontal and vertical installation flexibility.
- Optional index solutions such as Absolute ENCODER S1D.
- Approvals pursuant to MID/PED/ATEX Directives ensure compliance and safety.



Country of Origin:  
Slovakia

### Standard Features:

<b>Connection Size:</b>	G10 to G40
<b>Connection Type:</b>	Threaded or Flanged
<b>Temperature:</b>	-25°C to +70°C

Part No.	Description	Capacity
<b>DN25 Flanged PN16 Connection</b>		
ELST3450	RABO/G10 DN25 Compact Rotary Gas Meter	0.25-16m <sup>3</sup> /hr
ELST3451	RABO/G16 DN25 Compact Rotary Gas Meter	0.25-25m <sup>3</sup> /hr
ELST3452	RABO/G25 DN25 Compact Rotary Gas Meter	0.25-40m <sup>3</sup> /hr
<b>DN32 Flanged PN16 Connection</b>		
ELST3453	RABO/G10 DN32 Compact Rotary Gas Meter	0.25-16m <sup>3</sup> /hr
ELST3454	RABO/G16 DN32 Compact Rotary Gas Meter	0.25-25m <sup>3</sup> /hr
ELST3455	RABO/G25 DN32 Compact Rotary Gas Meter	0.25-40m <sup>3</sup> /hr
ELST3456	RABO/G40 DN32 Compact Rotary Gas Meter	0.3-65m <sup>3</sup> /hr
<b>DN40 Flanged PN16 Connection</b>		
ELST3457	RABO/G10 DN40 Compact Rotary Gas Meter	0.25-16m <sup>3</sup> /hr
ELST3458	RABO/G16 DN40 Compact Rotary Gas Meter	0.25-25m <sup>3</sup> /hr
ELST3459	RABO/G25 DN40 Compact Rotary Gas Meter	0.25-40m <sup>3</sup> /hr
ELST3460	RABO/G40 DN40 Compact Rotary Gas Meter	0.3-65m <sup>3</sup> /hr
<b>DN50 Flanged PN16 Connection</b>		
ELST3461	RABO/G10 DN50 Compact Rotary Gas Meter	0.25-16m <sup>3</sup> /hr
ELST3462	RABO/G16 DN50 Compact Rotary Gas Meter	0.25-25m <sup>3</sup> /hr
ELST3463	RABO/G25 DN50 Compact Rotary Gas Meter	0.25-40m <sup>3</sup> /hr
ELST3464	RABO/G40 DN50 Compact Rotary Gas Meter	0.3-65m <sup>3</sup> /hr



RABO Compact  
Gas Meter Datasheet

## MQMe Quantometer Gas Meter

The MQMe Quantometer by MetReg serves as a turbine gas meter, accurately recording the volume of operational natural gas and other non-corrosive gases like propane, butane, air, carbon dioxide (CO<sub>2</sub>), or inert gases.

It employs an electronic index to facilitate internal accounting and control processes across various industrial thermal processing facilities.

### Standard Features:

- Connection Type:** Flanged, Screwed  
**Connection Size:** 25-150mm (DN 25 (1") to DN 150 (6"))  
**Temperature:** -20°C to +60°C  
**Communications:** Serial RS 485 interface, Modbus, M-Bus

### Additional Features:

- M-Bus & LF Pulse Output
- Meter size G16 to G1000
- Flow rates from 25 to 1600 m<sup>3</sup>/h
- Pressure class PN 10/16 and ANSI Class 150
- Measuring range up to 1:20
- Meter body made of anodized high strength Aluminum
- Maintenance free based on permanent lubrication of the ball bearings
- Manual lubrication of the ball bearings by means of oil pump as option
- Electronic index head standard made of Aluminum
- Lithium battery with a calculated life time under standard conditions of 5 years
- Integral electronic volume corrector (AGA NX-19) and data storage as option
- Connection of an external pressure and temperature measurement is possible
- Communication options: serial RS 485 interface, Modbus, M-Bus, 4 to 20 mA analog output, high frequency or low frequency pulse output, pressure and temperature inputs



Part No.	Description	Capacity
<b>MQME-G10-25</b>	MQMe Quantometer - G10 DN25	1.6-16m <sup>3</sup> /hr
<b>MQME-G16-25</b>	MQMe Quantometer - G16 DN25	2.5-25m <sup>3</sup> /hr
<b>MQME-G25-25</b>	MQMe Quantometer - G25 DN25	4-40m <sup>3</sup> /hr
<b>MQME-G40-25</b>	MQMe Quantometer - G40 DN25	6.5-65m <sup>3</sup> /hr
<b>MQME-G65-50</b>	MQMe Quantometer - G65 DN50	5-100m <sup>3</sup> /hr
<b>MQME-G100-80</b>	MQMe Quantometer - G100 DN80	8-160m <sup>3</sup> /hr
<b>MQME-G160-80</b>	MQMe Quantometer - G160 DN80	12.5-250m <sup>3</sup> /hr
<b>MQME-G250-80</b>	MQMe Quantometer - G250 DN80	20-400m <sup>3</sup> /hr
<b>MQME-G250-100</b>	MQMe Quantometer - G250 DN100	20-400m <sup>3</sup> /hr
<b>MQME-G400-100</b>	MQMe Quantometer - G400 DN100	32-650m <sup>3</sup> /hr
<b>MQME-G400-150</b>	MQMe Quantometer - G400 DN150	32-650m <sup>3</sup> /hr
<b>MQME-G650-150</b>	MQMe Quantometer - G650 DN150	50-1000m <sup>3</sup> /hr



Country of Origin:  
Germany



**MQMe**  
Quantometer  
Datasheet

**For further information or enquiries, please contact our team**

## Wafer Pattern Bolt Kits



Country of Origin:  
Germany

### Additional Features:

- To be used with MQMe (flanged only)

Part No.	Description
<b>BOLT-1050</b>	DN50 Wafer Pattern Bolt Kit
<b>BOLT-1080</b>	DN150 Wafer Pattern Bolt Kit
<b>BOLT-1100</b>	DN100 Wafer Pattern Bolt Kit
<b>BOLT-1150</b>	DN80 Wafer Pattern Bolt Kit

## Wafer Pattern Flange Gaskets

Country of Origin:  
Germany

### Additional Features:

- To be used with MQMe (flanged only)

Part No.	Description
<b>GASKIT1104</b>	50mm Gasket
<b>GASKIT1110</b>	80mm Gasket
<b>GASKIT1100</b>	100mm Gasket
<b>GASKIT1112</b>	150mm Gasket

## Training Videos on our YouTube Channel

At DMS Metering Solutions, we are at the forefront of innovation in the world of smart metering and IoT technologies. Our channel is dedicated to providing you with the latest insights, tutorials, and updates on metering solutions that drive efficiency and sustainability in energy management.

**Take a look**





## Chatterbox-e Isolation Unit

The Chatterbox-e is an Opto-Isolation Unit that provides necessary Volt-Free isolation between Meters generating pulsed outputs in a hazardous area and equipment that is not intrinsically safe located outside of the hazardous area. A long life battery provides reliable usage for up to 10 years after installation with no need for external power supply at all. This allows the Chatterbox to be installed almost anywhere. The enclosure is IP66 rated as it is a weatherproof aluminium housing.

The Chatterbox has three cable glands as standard which are normally used as one gland to suit the pulsed inputs and then two glands for outputs from the unit. The Chatterbox has four channels for accepting pulses in and sending pulses out. Using internal switches, pulses can be split to provide dual output.

Part No.	Description
<b>DRESSR103</b>	Chatterbox-e Opto-Isolation Unit

### Standard Features:

<b>Communications:</b>	Pulsed
<b>Power Supply:</b>	Battery Powered

### Additional Features:

- 4-Channel Isolation Relay Barrier
- Simple mechanical and electrical installation
- Single or multiple outputs from single input
- Two output glands as standard promotes ease of installation when more than one system is to be connected to the Chatterbox-e
- Weatherproof cast aluminum housing rated to IP66



**Chatterbox-e  
Isolation Unit  
Datasheet**



Country of Origin:  
United Kingdom

## Need Technical Support?

Our team can assist and advise you with any questions you have and help you source the correct product from individual components through to complete solutions

**Call: 01773 534 555**



**DMS** METERING SOLUTIONS



Country of Origin:  
United Kingdom



**Mini Merlin  
Gas Detection  
Panel Datasheet**

## Mini Merlin Gas Detection Panel

The Mini Merlin is a dual gas sensor carefully designed and tested to monitor levels of Methane (CH<sub>4</sub>) / Natural Gas and Carbon Monoxide (CO) in the air. If there is a dangerous build-up of gas or unsafe levels of carbon monoxide at the sensor, this device can shut off the gas supply via a gas safety valve and /or a gas-fired appliance. This device has additional features for resetting systems, as well as audible and visual alarms - It can also be integrated with a Building Management System (BMS).

### Standard Features:

**Power Supply:** Dual power 240V AC or 24V AC

### Additional Features:

- CO<sub>2</sub> measured and displayed in parts per million (ppm).
- Complies with BB101 – Ventilation of school buildings
- Temperature displayed in degrees Celsius (°C) or Fahrenheit (°F).
- User friendly settings menu.

### Monitors the levels of:

- Carbon Monoxide (CO) (burning any fossil fuel, such as gasoline, propane, natural gas, oil, and wood)
- Methane Gas

Part No.	Description
<b>MERLIN-MINI</b>	Mini Merlin Gas Detection Panel

**For further information or enquiries, please contact our team**



## RSIAQ - Room Sensor (Air quality sensor)

In new buildings, occupiable rooms in the following settings should have means of monitoring indoor air quality:

- Offices, Public buildings, Hotels, Gymnasiums, Public houses, Places of assembly, Chilled food processing areas, Indoor sports venues, Dance studios, Theatres, Concert halls, Nightclubs, Occupied cold stores
- Small spaces up to 125m<sup>3</sup> in volume or 50m<sup>2</sup> in floor area and large spaces up to 800m<sup>3</sup> in volume or 320m<sup>2</sup> in floor area should also be included.

**For CO2 monitoring, the devices should meet these requirements:**

- Be non-dispersive infrared (NDIR) type CO2 monitors.
- Be mains powered.
- Be placed at breathing height and away from windows, doors, or ventilation openings where practicable.
- Be placed at least 500mm from people where practicable.

The WELL Performance Rating is a credit-based standard for commercial buildings, requiring 21 out of 33 measurable, performance-based strategies to achieve the WELL Building Standard.

Part No.	Description
<b>RSIAQ</b>	RSIAQ - Room Sensor



**Credits include:**

- PM2 - Install Indoor Air Quality Monitors (1 Credit):
  - a) PM2.5 or PM10
  - b) Carbon Dioxide
  - c) Carbon Monoxide
  - d) Ozone
  - e) Nitrogen Dioxide
  - f) Total VOCs
  - g) Formaldehyde
- PM2 - Reporting & Maintenance (1 Credit)
- PM3 - Promote Air Quality Awareness (1 Credit)



Country of Origin:  
United Kingdom





## MC2-197 PTZ Volume Converter

### Standard Features:

- Compliance:** MID Approved
- Power Supply:** Battery Powered
- Communication Outputs:** Pulsed

### Additional Features:

- External Pressure Sensor & Temperature Sensor
- 3mtr Cables

### Suitable Applications:

- Natural Gas
- Liquefied Petroleum Gas
- Manufactured Gases

Part No.	Description
<b>DRES1001</b>	MC2-197 PTZ Volume Converter - European <i>0.8 - 2BarA</i>
<b>DRES1003</b>	MC2-197 PTZ Volume Converter - European <i>2 - 12BarA</i>
<b>DRES1005</b>	MC2-197 PTZ Volume Converter - European <i>5 - 70BarA</i>



Country of Origin:  
United States



**MC2-197 PTZ  
Data Sheet**

The MC2-197 PTZ (Micro converter 2) is the newly updated volume converter from Dresser, meeting all the necessary EU directives including ATEX, MID and EMC, and is fully CE badged – suitable for fiscal use within the UK and other EU countries. This volume converter can be used with any meter that provides an LF pulse output.

Battery life – as per the previous Micro converter the battery life typically lasts 7 years, the battery can be changed on site within a couple of minutes without loss of operation during the exchange due to the on board capacitors – another point to remember is that you don't have to re-set up the device after the battery has been replaced.

An alloy housing provides protection from breaks or cracks if accidentally knocked or dropped – a proven robust design. It uses the same familiar and easy to use MCUT interface software for setup as previous models, albeit an updated version with additional security, as is required for the MID. (Anyone who has installed and operated the previous MC2 will see little difference). The volume converter will be tested by the manufacturer in the UK for accuracy performance in accordance with the MID (Measurement Instruments Directive) using the SGERG 3 method for compressibility, and gas constituent values calculated from published "Bacton mean" figures. A test certificate will be supplied. Compressibility methods and gas parameter values are fully configurable by the installer. As per the previous MC2, telemetry pulse output connections for converted (Vb) and unconverted (V) volume to connect to your BMS or AMR system are available and configurable.

Finally, the Micro converter 2 is fully configurable with vast logging capability and memory. Over 32,000 records can be stored!

# Gas Control Equipment

This comprehensive product line includes gas pressure regulators, filters, safety cut-off valves, relief valves, non-return valves, ancillary control equipment, and product spares.



## Low Pressure Regulator

### HON226

The HON226P is a Low-Pressure direct-acting, spring-loaded regulator. Suitable for industrial & commercial - Max. inlet pressure: 500 mbarg

Outlet pressure range: 3.7 to 150 mbarg, (dependent upon model and size)

Connection Sizes: DN100 & 150  
Flanged to PN16: DN100 & DN150



## Medium Pressure Regulator

### HON270

The HON270 Mk2 is a direct-acting, lever operated regulator for use on gas pressure reduction systems to Industrial & commercial applications.

Connection Sizes:  
Screwed: 1.1/2" & 2",  
DN50 Flanged



## Medium Pressure Regulator

### HON277

The HON277 is a direct-acting, balanced lever operated regulator for use on gas pressure reduction systems to Industrial & commercial applications.

Outlet pressure range: 3.7 to 150 mbarg, (dependent upon model and size)

Connection Sizes:  
DN50 Flanged



For further information, or prices on Bryan Donkin Products please contact our team

# Honeywell

## Medium Pressure Regulator

### HON280

The HON280 to HON282H are a range of spring-loaded, direct-acting, balanced regulators. Designed for use on high capacity applications to industrial, commercial and gas distribution networks.

#### Connection Sizes:

DN50, DN80, DN100

Flanged to PN16: DN50, DN80 & DN100



## Medium Pressure Regulator

### HON680

The HON 680 MK 1 and HON 680 MK 2-EVA are gas pressure regulators featuring a spring-loaded measuring unit and a double-seat valve, specifically designed for applications requiring extremely high flow capacities.

#### Connection Sizes:

DN 80, DN 100, DN 150, DN 200



## Medium Pressure Filter

### HON121

The HON121 filter is an inline design with straight through filtration.

#### Connection Sizes:

DN 80 to DN300



## Medium Pressure Regulator

### HON122

HON122 filter is an angle type. Designed to remove dirt and debris from the gas stream to provide protection to downstream equipment.

#### Connection Sizes:

DN 80 to DN300



## Medium Pressure Regulator

### HON124

HON124 filter is an angle type. Designed to remove dirt and debris from the gas stream to provide protection to downstream equipment.

#### Connection Sizes:

Screwed: 3/4" & 1"

Flanged DN50

## Pressure Regulator

### HON380

The HON380 is a spring-loaded gas regulator with inlet pressure compensation and an integral safety shut off valve for over and under pressure shut off. Ideal for use in public gas supply grids as well as the industrial market.

#### Connection Sizes:

DN25 - DN100

## Medium Pressure Safety Device

### HON305

The HON305 valves are used for Over Pressure Cut Off (OPCO) to protect downstream devices from dangerous levels of gas pressure.

#### Connection Sizes:

DN 80, DN 100, DN 150, DN 200



## Medium Pressure Safety Device

### HON226R

The HON226R is a spring loaded pressure relief valve

#### Connection Sizes:

Screwed: 3/4" & 1"

## Medium Pressure non-return valve

### HON590

The HON590 non-return valve is designed to prevent reverse flow and must be fitted (GAS ACT 1972) in the gas line where air at higher pressure is mixed with fuel gas prior to combustion and many types of industrial burners.

#### Connection Sizes:

Screwed: 2" & 3",

Flanged: DN80, DN100 & DN150

Screwed to BS21 Rc: 2" & 3"

Flanged to PN16: DN80, DN100 & DN150

## Medium Pressure Safety Device

### HON226VR HON226HV

The HON226VR / HVR is a spring loaded pressure relief valve

#### Connection Sizes:

Screwed: 1"

For further information, for prices on Bryan Donkin Products please contact our team



## Gas Meter Housing

DMS Metering Solutions supply the GC range of Gas Meter Housing – we selected this range to join our range products due to its tough structure and low maintenance costs, but there are several other reasons for you to include the GC gas meter housing in your application...

Built to last in excess of 25 years the GC range is as tough as they come with a price to suit your budget! This heavily durable meter housing has been purposely built to protect, being able to withstand the harshest of weather conditions – benefiting from 100% roof rainwater protection – IP55 rated (dust and water protection), explosion relief technology (optional upon request), manufactured from a fire retardant polyester resin that meets BS 476 part 7 class 2 - 'Surface Spread of Flame'. Triangular Key is supplied (universal gas meter key or alternative padlock can be added) The latest in the GC design is a popular choice across many industries, including; Electrical, Mechanical, Construction & Utilities. The Meter housing can be used for domestic or industrial applications, sheltering your Gas Meter and Gas Regulator.

- The housing is suitable for Gas Diaphragm Meters BK-G6 to BKG-100



GC Cabinet  
and Enclosures  
Datasheet



Country of Origin:  
United Kingdom



## MeterSit's Domusnext® Thermal Mass Meters (G10 - G25)

MeterSit's Domusnext® Thermal Mass Meters (G10 - G25) provide an exact measurement of supplied gas in standard m<sup>3</sup>, avoiding the use of annual average temperatures and conversion factors - this ensures compliance with the Measuring Instruments Directive (MID). Capable memory storing daily and half-hourly consumption, with frequent communication of data, using NB-IOT Technology. Despite being highly innovative, Domusnext® meters have passed the most stringent reliability tests, this certifies the robustness of the MeterSit Meters and the accuracy of their measurements.

Part No. Description Capacity

### Domestic

**GASKIT5998** MeterSit SMETS2

### Screwed Connection (BS EN 1359)

**GASKIT6010** Metersit U16 / G10 AMR Meter 0.10-16.0m<sup>3</sup>/hr

**GASKIT6020** Metersit U25 / G16 AMR Meter 0.16-5.0m<sup>3</sup>/hr

**GASKIT6030** Metersit U40 / G25 AMR Meter 0.25-40.0m<sup>3</sup>/hr



Country of Origin:  
Italy



MeterSit  
Datasheet

**DMS** METERING  
SOLUTIONS



Country of Origin:  
United Kingdom

## Gas Meter Installation Kits

Discover a comprehensive selection of LPG and natural gas meter kits at DMS, equipped with everything you need for both primary and secondary meters, including governors and ECVs. Our range of meter kits ensures accurate gas measurement and safe installation, catering to various applications from residential to commercial settings.

Get a great deal on gas and LPG meter kits when shopping with DMS. We offer next-day delivery on qualifying orders, helping you get your installation job done quicker

Part No. Description

### Standard Gas Meter Installation Kits

**GASKIT0001** G10/U16 LP Installation Kit

**GASKIT0002** G16/U25 LP Installation Kit

**GASKIT0003** G25/U40 LP Installation Kit

**GASKIT0004A** G40/U65 LP Inlet / Outlet - 2" Inlet

**GASKIT0012** G40/U65 LP Inlet / Outlet - 80mm Inlet

**GASKIT0006A** G65/U100 LP Inlet / Outlet

**GASKIT0008A** G100/U160 LP Inlet / Outlet

# Non-invasive metering for flexible measurement

DMS can offer solutions for non-invasive measurement of Water and Heating systems.

Our clamp-on meters can cover pipes as small as 15mm up to larger sizes of 1200mm diameter.

The use of these meters can:

- Verify the accuracy of existing meters and infrastructure
- Measure the maximum load and overall profile for survey purposes
- Help identify any issues with the overall performance of the Water Supply or Heating/ Cooling System

If you have a requirement for clamp-on flow and energy measurement, please contact our team to discuss further.



For further information, please contact our technical team on 01773 534 555 or email [meters@dmsltd.com](mailto:meters@dmsltd.com)

# Process & Specialist

Brands you can trust



DMS prides itself on its ability to provide tailored solutions that meet the unique demands of industries, even those operating in unconventional or specialized environments. Our product offerings extend beyond traditional applications to include sectors such as steam, oil, compressed air, and hygienic requirements, where precision and reliability are paramount.

In addressing these diverse needs, we harness a range of cutting-edge technologies, each carefully selected to excel in its respective domain. Electromagnetic metering stands out for its exceptional accuracy and reliability, making it ideal for applications involving conductive fluids like water or wastewater. Meanwhile, vortex metering technology is well-suited for measuring the flow of gases, steam, and liquids in challenging conditions, offering robust performance even in harsh environments.

For situations where preserving the integrity of the fluid or process is critical, our non-invasive metering solutions come into play. By eliminating the need for direct contact with the fluid, these innovative technologies ensure minimal disruption while maintaining accuracy and precision.

At DMS, we understand that every industry and application comes with its own set of challenges and requirements. That's why we go beyond conventional offerings, leveraging our expertise and innovative approach to deliver solutions that not only meet but exceed expectations. Whether it's ensuring efficient steam distribution, monitoring oil flow rates, managing compressed air systems, or maintaining hygienic standards, our diverse range of products and technologies are designed to deliver unmatched performance and reliability.

VZO4 & VZO8 Commercial Oil Meters	<b>70</b>
VZO Commercial Oil Meters	<b>71</b>
VZO4 & VZO8 Commercial Oil Mounting Kits	<b>72</b>
IOG Industrial Oval Gear Meters	<b>72</b>
ModMag M2000 Electromagnetic Flow Meters	<b>73</b>
FUE380 Steam Meters	<b>73</b>
SITRANS FUE950 Energy Calculator	<b>74</b>
Prowirl F200/VV200 Vortex Meters	<b>75</b>
Siemens Mag Meters	<b>76</b>
LX Stainless Steel Turbine Flow Meters	<b>77-78</b>
101a Remote Totaliser	<b>79</b>
Badger TFX-500w Clamp-on Meter	<b>80</b>
Badger TFX-5000 Non-Invasive Meter	<b>81</b>

# Commercial Oil Meters

Discover the precision and reliability of oil measurement with DMS Metering Solutions' comprehensive range of oil meters. Our products are designed to meet the demands of various industrial and commercial applications, ensuring accurate monitoring and control of oil consumption.



VZO 4

VZO 4 RE

VZO 8

VZO 8 RE

## VZO4 & VZO8 Commercial Oil Meters

The VZO4 and VZO8 Oil Meters from Aquametro are the solution for monitoring the flow of Oil Supplies on smaller, domestic size installations. By working with lower flow rates compared to their more commercial counterparts, they offer high accuracy even on the smallest of supplies. The VZO4 can be supplied with either an 8mm or 10mm mounting kit, and the VZO8 is supplied with a 15mm mounting kit. The mounting kits allow the VZO Meters to be installed with flow travelling in almost all directions as they can be rotated to work on either a straight line connection or at less conventional angled connections. The VZO4 and VZO8 can also both work accurately in Horizontal and Vertical orientation.

Each Meter model has a mechanical roller counter index that has 7 Digits. The VZO4 displays readings as small as 0.001 Litres and the VZO8 shows 0.01 Litres as the smallest resolution. A Pulsed version of each Meter is also available. The VZO4RE0.1 pulses once every 0.1 Litres and the VZO8RE1 pulses once for every Litre that passes.

MID versions of the Meters are available should an application call for it. The accuracy of the standard models is confirmed by Aquametro to be +1%/-2% for the VZO4 and VZO8.

Part No.	Description
<b>CONT1002</b>	VZO 4 1/8" BSPF Oil Meter 1-50 l/hr <i>No Pulse Output</i>
<b>CONT1004</b>	VZO 8 1/4" BSPF Oil Mete 4-140 l/hr <i>Pulsed</i>
<b>CONT1102 *</b>	VZO 4 RE0.1 1/8" BSPF Oil Meter <i>1-50 l/hr Measuring Range, With Pulse Output 0.1:1L</i>
<b>CONT1104 *</b>	VZO 8 RE1 1/4" BSPF Oil Meter <i>4-140l/hr Measuring Range, With Pulse Output 1:1L</i>

### Standard Features:

<b>Connection Size:</b>	MID Approved
<b>Connection Type:</b>	Screwed Connection
<b>Communication Outputs:</b>	Pulsed*

### Additional Features:

- Oil meter with internal threaded connections located on the bottom plate
- Mechanical roller counter, volume display in litres
- For mounting in horizontal, vertical and inclined positions

### Suitable Applications:

- Heating Fuel, Extra Light/Light/Medium
- Kerosene
- Naphtha
- Diesel
- Petrol
- Lubricating Oils



**VZO4 - VZO8  
Oil Meter  
Datasheet**



Country of Origin:  
Switzerland





VZO 15/130



VZO 40/130



VZO 50/130

### Suitable for Fuel Types:

- Fluids according to ISO 8217-2012
- Heating fuel extra light/light, medium, heavy, fuel blends
- Naphtha
- Lubricating liquids (oils)



Country of Origin:  
Switzerland



VZO 15-50mm  
Oil Meter  
Datasheet

## VZO Commercial Oil Meters

For commercial installations, Aquametro offers a comprehensive range of in-line VZO Oil Meters, catering to larger requirements. This range encompasses sizes from 15-50mm, featuring both standard Meters with mechanical indexes and versions with Pulsed Output options. Meters ranging from 15-40mm are available with either BSP Male threaded connections or PN25 Flanges, while the 50mm model comes standard with PN25 Flanges.

All VZO models are versatile in mounting, allowing installation in either horizontal or vertical positions without compromising accuracy. Threaded end Meters are equipped with union connections, and RV Pulsed versions come with a 3-meter cable for easy connection.

With a maximum temperature tolerance of 130°C, VZO Meters find common applications in heating and propellant fuels. They can even monitor boilers with turndown ratios within the calibrated flow range of the VZO series.

### Standard Features:

Connection Size:	MID Approved
Connection Size:	15-50mm
Connection Type:	Flanged, Screwed
Communication Outputs:	Pulsed

Part No. Description

### Screwed Connection No Pulse Output - Complete with Unions

<b>CONT1006</b>	VZO 15/130 1/2" BSPM Oil Meter 20-400 l/h
<b>CONT1008</b>	VZO 20/130 3/4" BSPM Oil Meter 40-1000l/h
<b>CONT1010</b>	VZO 25/130 1" BSPM Oil Meter 75-2000 l/h
<b>CONT1012</b>	VZO 40/130 1.5" BSPM Oil Meter 225-6000l/h

### Flanged Connection DN50 PN25

<b>CONT1014</b>	VZO 50/130 2" Oil Meter 750-20000 l/hr
-----------------	--

For further information or enquiries, please contact us

## Can't find what you are looking for?

Our team can assist and advise you with any questions you have and help you source the correct product from individual components through to complete solutions

Call: 01773 534 555



## VZO4 & VZO8 Commercial Oil Meter Mounting Kits

Upgrade your piping system with the Aquametro VZO 4 Mounting Kit, an essential accessory for anyone working with 1/8" (8mm) pipes. This kit includes a 1/8" ET x 8mm cutting ring, facilitating precise and secure pipe installation.

Crafted for both efficiency and durability, this mounting kit features high-quality materials that guarantee a tight and leak-free connection. The cutting ring ensures a clean and accurate cut, maintaining a snug fit that remains intact over time.

Whether you're a professional plumber or a DIY enthusiast, the Aquametro VZO 4 Mounting Kit is indispensable for all your pipe installation projects. With its user-friendly design and dependable performance, you can rely on this kit to meet your piping needs effectively.

Upgrade your piping system today with the Aquametro VZO 4 Mounting Kit for 1/8" (8mm) pipes, ensuring a secure and professional installation every time.



CONT1204

CONT1206/ CONT1208

Part No	Description
<b>CONT1204</b>	VZO8 Mounting Kit to 15mm Copper
<b>CONT1206</b>	VZO4 1/8" - 8mm Mounting Kit
<b>CONT1208</b>	VZO4 1/8" - 10mm Mounting Kit



Country of Origin:  
Switzerland

## IOG - Industrial Oval Gear Meter

The Industrial OG meter rugged flow meter with high accuracy. The range of IOG Meters are capable of measuring liquids which a typical flow meter is not able to do, such as petroleum-based, water solutions and chemicals. Any type of liquid that is compatible with the materials of construction is suitable, even if the medium is very viscous or highly corrosive.



**Badger  
IOG Series  
Datasheet**



Country of Origin:  
Switzerland

## MAG Meters

Experience unparalleled accuracy and reliability in fluid measurement with DMS Metering Solutions' range of Electromagnetic (MAG) Meters. Our MAG meters are designed to provide precise flow measurement for a wide variety of conductive liquids, making them ideal for numerous industrial and commercial applications.



### ModMag M2000 Electromagnetic Flow Meters

The M2000 Meters are best suited for bidirectional flow measurement of conductive liquids and fluids. With its electromagnetic measuring principle, it can offer high accuracy and low error margins for total volume and flow rate recording. We can offer various communication outputs with the M2000, including M-Bus, Modbus (RS485 or TCP/IP) & BACnet to name a few. Along with the communication outputs, the M2000 needs either 230Vac mains or 24Vdc supply to operate.

The M2000 meters are available in DN6-DN2000 sizing, with options of different internal liners to suit cold / hot applications and more specialized applications with polluted or contaminated mediums. There are options on the meter body design, either a physically flanged flow meter or as a wafer-pattern low profile version. We would generally supply meters for installation onto PN16 flanges.

If the meter is to be located in an area with difficult access, the digital display can be remotely mounted away from the flow meter. Our standard design of the M2000 meters has the display mounted on the body (compact). As standard, the M2000 meters are IP67 rated, allowing them to be used outdoors. If IP68 rating is required, then the meters can be potted to protect the internal electronics.

<b>Connection Size:</b>	6-2000mm
<b>Connection Type:</b>	Flanged/Wafer Pattern Flanged
<b>Power Supply:</b>	230V or 24Vdc Mains
<b>Communication Outputs:</b>	Pulse, 4-20mA, M-Bus, Modbus, BACnet
<b>Compliance:</b>	WRAS, MID Approved
<b>Temperature:</b>	Cold (Hard Rubber Liner)/Hot (PTFE Liner)



Country of Origin:  
Czechia



Badger Meter

## SIEMENS



### Siemens FUE380

The Ultrasonic design of the FUE380 range allows for this combination of Flow Meter and Calculator to cover even the largest of application sizes. The reliability of the FUE380 and FUE950 means that it can be used in both Vertical and Horizontal installation positions without compromising the flow range of accuracy.

#### Standard Features:

<b>Compliance:</b>	MID Class 2, RHI Compliant
<b>Connection Size:</b>	50-1200mm
<b>Power Supply:</b>	Flanged
<b>Power Supply:</b>	230Vac Mains, Battery
<b>Communications Output:</b>	Pulsed, M-Bus
<b>Temperature:</b>	Heating & Cooling



Country of Origin:  
Germany

## Siemens SITRANS FUE950 Energy Calculator

# SIEMENS

SITRANS FUE950 is a multi-purpose energy calculator for water-based systems which meets the requirements of EN 1434. This device has been specially developed to process volume pulses from SITRANS FUE380.

The FUE950 is available in a variety of different pulse input versions, this needs to match up to the corresponding pulse output of the FUE380 flow meters. The standard design of the FUE950 is to use PT500 temperature sensors in either a 2-wire or 4-wire configuration, depending on the cable distance needed. PT100 is also available as a special order version.

The calculator can be either powered internally via batteries or via external 230Vac mains power, with battery back-up.

Various communication modules are available as plug-in retrofit elements, including: pulse inputs; pulse outputs, M-Bus and analogue 4-20mA.



Country of Origin:  
Germany

### Additional Features:

- Prepared for heating, cooling measurement
- Approval for MID for heat metering and PTB K7.2 for cooling
- High-accuracy thermal energy metering, meets EN1434 requirements
- Measured temperature range -20°C to 190°C
- Instantaneous values for energy/volume flow
- Battery or mains powered (battery lifetime of typically up to 10 years)
- Optical data interface
- Real date and time
- Auto-detection of 2-wire or 4-wire temperature sensors

Endress+Hauser   
People for Process Automation

## Prowirl F 200 Vortex Meters



The Prowirl F 200 Vortex Meters from Endress and Hauser are primarily suited to be used when monitoring Steam consumption. Available in sizes from 15-300mm, all with a flanged connection as standard

### Standard Features:

**Connection Size:** 15-300mm  
**Connection Type:** Flanged Connection  
**Power Supply:** 24Vdc Mains Powered  
**Communication Outputs:** Pulsed

### Additional Features:

- The measuring principle of the Prowirl Meters means that Steam is not the only medium that can be monitored, with flexibility to work with other Gases and Liquids as well.

Endress+Hauser   
People for Process Automation

## Prowirl D 200 Vortex Meters



The compact Prowirl D 200 from Endress and Hauser has the benefit of a Wafer Pattern connection across its range of 15-150mm diameter models. Designed to use the Vortex measuring principle as utilised throughout the Prowirl portfolio, this Meter is primarily specified for monitoring Steam applications. However, the principle will also work accurately when monitoring applications involving other Gases and Liquids.

### Standard Features:

**Connection Size:** 15-150mm  
**Connection Type:** Flanged Connection  
**Power Supply:** 24Vdc Mains Powered  
**Communication Outputs:** Pulsed

SIEMENS

## MAG5100W Electromagnetic Flow Meters

The MAG5100W Electromagnetic Flow Meters from Siemens, are high grade in their construction and measuring principle that allows them to be used on a variety of applications. By using an electromagnetic sensor to detect flow and convert it into an electrical signal to proportion it against the velocity.

### Standard Features:

**Compliance:** MID, WRAS Approved

**Connection Size:** 15-2000mm

**Connection Type:** Flanged

**Power Supply:**

230Vac, 24Vdc Mains Powered

**Communication Outputs:** Pulsed

**Temperature:** Cold

**Mounting:** Horizontal or Vertical



**MAG5100W  
Datasheet**



Country of Origin:  
France

## MAG3100(P) Electromagnetic Flow Meters

For installation involving higher temperatures of water, the MAG3100P Flow Meters from Siemens can be supplied. Using Electromagnetic sensors to measure flow volume to a precise level, the MAG3100 ranges are manufactured with PTFE Liners on their internal parts which can handle the higher temperatures of 130°C and 180°C on special order models.

### Standard Features:

**Compliance:** MID Approved

**Connection Size:** 15-2000mm

**Power Supply:** Flanged

**Power Supply:** 230Vac, 24Vdc Mains Powered

**Communications Output:** Pulsed

**Temperature:** Hot

**Mounting:** Horizontal or Vertical



Country of Origin:  
France

**For further information or enquiries, please contact us**

## Hygienic Meter

Ensure the highest standards of cleanliness and precision in fluid measurement with DMS Metering Solutions' range of Hygienic Meters. Our meters are specifically designed to meet the rigorous requirements of industries where sanitation and accuracy are paramount, such as food and beverage, pharmaceuticals, and biotechnology.



## LX Stainless Steel Turbine Flow Meters

The Lx Turbine Meters are designed for a wide range of specialist applications, featuring robust stainless steel construction that resists corrosion from various chemical solutions. This durable design also makes them ideal for food-grade applications. Each Lx Meter comes standard with a 101a Totaliser, which provides both accumulated volume and live flow rate readings on a digital display. This display is powered by an internal battery but can also operate on a low voltage 24VDC supply. Additional display options are available upon request; please refer to the data sheet or consult with our sales team to discuss your specific needs.



Threaded



Flanged

### Standard Features:

<b>Connection Size:</b>	15-50mm (Threaded) 20-100mm (Flanged)
<b>Compliance:</b>	Flanged, Screwed
<b>Communication Outputs:</b>	4-20ma Analogue Output, Pulsed
<b>Power Supply:</b>	24Vdc Mains, Battery Powered

### Additional Features:

- BSP Male Connections (Threaded)
- Can be used in both Horizontal and Vertical runs of pipework
- A special version of the Lx Meter is available with Tri Clamp Connections, ideal for hygienically sensitive applications



LX Stainless Steel  
Turbine Datasheet



Country of Origin:  
United Kingdom

Explore the full potential of Lx Turbine Meters for your specific needs please contact us



## LX Stainless Steel Turbine Flow Meters



Part No Description Flow Range litres/min

Screwed Connection		
LX1001	Lx-13-T1-S Stainless Steel Flow Meter <i>1/2" BSP Male Connection</i>	2-20
LX1003	Lx-16-T1-S Stainless Steel Flow Meter <i>3/4" BSP Male Connection</i>	5-50
LX1005	Lx-19-T1-S Stainless Steel Flow Meter <i>3/4" BSP Male Connection</i>	14-140
LX1007	Lx-25-T1-S Stainless Steel Flow Meter <i>1" BSP Male Connection</i>	27-270
LX1009	Lx-40-T1-S Stainless Steel Flow Meter <i>1.5" BSP Male Connection</i>	55-550
LX1011	Lx-50-T1-S Stainless Steel Flow Meter <i>2" BSP Male Connection</i>	114-1140



Part No Description Flow Range litres/min

Flanged Connection PN16		
LX2001	Lx-13-F3-S Stainless Steel Flow Meter	2-20
LX2003	Lx-16-F3-S Stainless Steel Flow Meter	5-50
LX2005	Lx-19-F3-S Stainless Steel Flow Meter	14-140
LX2007	Lx-25-F3-S Stainless Steel Flow Meter	27-270
LX2009	Lx-40-F3-S Stainless Steel Flow Meter	55-550
LX2011	Lx-50-F3-S Stainless Steel Flow Meter	114-1140
LX2013	Lx-80-F3-S Stainless Steel Flow Meter	227-2270
LX2015	Lx-100-F3-S Stainless Steel Flow Meter	454-4540

## 101a Remote Totaliser

The 101a Totaliser displays both accumulated volume and a live flow rate on a digital read out. This display is powered by an internal battery supply but it can also be powered by a low voltage 24vdc supply.

### Standard Features:

**Power Supply:** 3.6V Lithium Battery  
8 - 30V D.C. or 4 - 20 mA loop

**Communication Outputs:** Pulsed Output and 4-20mA Output

Part No Description

LX3001	101a Remote Totaliser
--------	-----------------------



# Badger TFX-500w Clamp-on Meter



The TFX-500w transit time ultrasonic flow meter measures volumetric flow of clean water in pipes 10 in. or smaller. By clamping on the outside of the pipe, the ultrasonic meter installs without cutting or tapping the pipe.

The TFX-500w meter is well suited for building automation, water distribution and wastewater collection in new and retrofit applications. In addition to having lower installation costs than an inline flow meter, the TFX-500w meter can be installed while the system continues to operate without interruption.

Setting up the meter is simple, either through the keypad interface or with SoloCUE® Flow Device Manager software on a PC or Laptop linked to the meter via USB cable.



**Standard Features:**

- Meter Type:** Bidirectional flow measurement using Ultrasonic principle
- Functions:** Measures flow rate, total and velocity of water flow
- Design:** Compact enclosure uses large, easy-to-read graphical display
- Communication Outputs:** Pulse, Analogue 4-20mA, Modbus RTU or BACnet MS/TP over RS485
- Power Supply:** 24Vdc Mains Powered
- Pipes Sizes:** 12-250mm



**TFX-500w  
Datasheet**



Country of Origin:  
Germany

**Additional Features:**

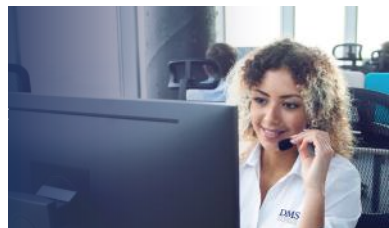
- Clamp-on, non-invasive flow meter
- Installs without cutting into the pipe
- Eliminates costs of inline flanges and pipe-fittings
- No maintenance parts to maintain
- No pipe head loss
- Bidirectional flow measurement system
- Measures flow rate, total and velocity of water flow
- Set up meter through keypad interface or with SoloCUE Flow Device Manager software
- Compact enclosure uses a large, easy-to-read graphical display
- Modbus RTU or BACnet MS/TP over RS485 and BEACON®/Lonworks connectivity

**For further information or enquiries, please contact us**

## Need Technical Support

Our team can assist and advise you with any questions you have and help you source the complete product from individual components through complete solutions

**Call: 01773 534 555**







Badger Meter



Ultrasonic Flow Meters



The TFX-5000 meter is available in two versions:

- A flow meter for water delivery, sewage, cooling water, water-glycol mixtures, alcohols and chemicals
- A heating/cooling energy flow meter used in conjunction with dual clamp-on RTDs for temperature measurement—ideal for hydronic process and HVAC applications

#### Additional Features:

- By clamping on the outside of the pipe, the ultrasonic meter installs without cutting or tapping the pipe.
- Reduced installation time and cost
- Non-invasive, non-contact measurement
- Bidirectional flow measurement system
- Measures flow rate, total and velocity of water flow
- Set up the meter through keypad interface or with SoloCUE® Flow Device Manager software
- Compact enclosure uses a large, easy-to-read graphical display
- Modbus RTU or BACnet MS/TP over RS485 and BEACON®/AquaCUE® connectivity

## TFX-5000 Non-Invasive Meter

The TFX-5000 transit time ultrasonic flow meter measures volumetric flow and heating/cooling energy rates in clean liquids as well as those with small amounts of suspended solids or aeration, such as surface water or raw sewage.

TFX-5000 flow and energy meters clamp onto the outside of pipes and do not contact the internal liquid. There are a variety of configurations that permit the user to select a meter with features suitable to meet application requirements. With the nature of non-invasive meters, the process can remain in operation whilst the meter is installed.

Setting up the meter is simple with SoloCUE® Flow Device Manager software on a PC or Laptop linked to the meter via USB cable.

#### Standard Features:

**Meter Type:** Bidirectional flow measurement using Ultrasonic principle with options of heating/cooling version to measure energy with a large range of sizes and flows that can be measured accurately

**Functions:** Measures flow rate, total and velocity of water flow and also total energy and live energy rating for the heating/cooling model

**Design:** Large, easy-to-read graphical display, available as a local or remotely mounted device.

Rugged, aluminum enclosure for a long service life in harsh environments

**Communication Outputs:** Pulse, Analogue 4-20mA, Modbus RTU or BACnet MS/TP over RS485

**Power Supply:** 230Vac or 24Vdc Mains Powered  
**Pipes Sizes:** 12-1200mm



Country of Origin:  
Germany



**TFX-5000  
Datasheet**



## Multi-purpose electricity meter - Norax3

Despite being labelled as a three-phase meter, the Norax3 is also capable of measuring single phase circuits up to 100A as well. With its multipurpose design, it can measure 2-wire, 3-wire or 4-wire networks with direct connection to the circuits. The Norax3 is capable measuring active and reactive power as well as displaying voltage, current, instantaneous power and maximum power.

The Norax3 has several communication output options, including pulse, Modbus RS-485 and Wireless M-Bus (868MHz). DLMS/COSEM is also available.

The design of the Norax3 allows it to mount to any wall or surface, with an extended cover to allow easy wiring and connection of the Live and Neutral circuits. The meter has a segmented LCD for showing the data locally to users and consumers alike.

For further information of the Electric meters range we offer, please contact our technical team on 01773 534 555 or email [meters@dmsltd.com](mailto:meters@dmsltd.com)

**DMS** METERING SOLUTIONS

# Electric

DMS provides a range of single and three-phase meters that can operate via direct connection or CT operation. These meters offer versatility in communication outputs, including Pulse, M-Bus, Modbus, wM-Bus and LoRaWAN, catering to diverse connectivity requirements.

ECA2 Single Phase Electric Meters	84
EMP1 Three Phase Direct Connect Electric Meters	85
SDM120 Single Phase Electric Meters	86
SDM230 Single Phase Electric Meters	87
SDM630/SDM630MCT Three Phase Electric Meters	89
NORAX3 Three Phase Electric Meters	89
ESCT-T24 Single Phase Split Core Current Transformers	90
ESCT-T36 Single Phase Split Core Current Transformers	91

Brands you can trust



## ECA2 Single Phase Electric Meter

The emlite ECA2 single phase meter provides a compact solution for many metering applications. Fully approved in accordance with the Measuring Instruments Directive (MID), this highly accurate meter may be used for utility billing or micro-generation metering.

The ECA2 single phase meter is one of the worlds most compact metering devices allowing the unit to be used in metering installations where space is at a premium.

The meter provides measurement of active (kWh) energy in both import and export directions with registers shown on the large easy to read LCD display. The display features 8x3.5mm characters and can be configured to auto cycle any of the available registers or remain static with only a single register viewable.

The meter features an optical port conforming to IEC 629056-21 allowing meter readings to be collected electronically using a standard probe and software tool. The port also allows configuration of the meter.

The electronic meter is highly reliable and capable of withstanding high voltage events and overcurrent without failure. The meter is resistant to tamper with reverse energy fraud detection and sealing for life.

High quality solid brass cable terminals are used allowing 100 Amp operation. To enable the connection of energy management systems, an electronic pulsed output version is available. The pulsed output connects onto two auxiliary terminals in the main terminal block.



EMLITE1001



EMLITE1003

### Standard Features:

<b>Electric Phase:</b>	Single Phase
<b>Compliance:</b>	MID Approved, IEC 629056-21
<b>Connection Type:</b>	Direct Connection
<b>Display:</b>	LCD display
<b>Communication Outputs:</b>	Pulsed

### Additional Features:

- 100A
- Pulsed Output (1Wh=1 Pulse)

Part No.	Description
<b>EMLITE1001</b>	EML-ECA2.v Single Phase Electric Meter
<b>EMLITE1003</b>	EML-ECA2.v Single Phase Electric Meter <i>Extended Cover Included</i>



**Single Phase  
Electric Meter  
Datasheet**



Country of Origin:  
United Kingdom

## Can't find what you are looking for?

Our team can assist and advise you with any questions you have and help you source the correct product from individual components through to complete solutions

**Call: 01773 534 555**



**emlite**

## EMP1 Three Phase Direct Connect Electric Meter

The emlite EMP1 Three phase metering range offers high quality accurate meters that are suitable for direct connected domestic, commercial, Solar PV and light industrial applications.

The EMP1.az and EMP1.av are the entry models of the emlite three phase metering range. They are suitable for a host of different applications where basic consumption or generation metering is required. The EMP1.az and EMP1.av are variants are of solid high quality construction and benefit from features normally found in more expensive metering.

### Standard Features:

Electric Phase:	3 Phase
Compliance:	MID Approved
Connection Type:	Direct Connection
Display:	LCD display
Mounting Style:	Wall mounted
Communication Outputs:	Pulsed

### Additional Features:

- 100A
- Pulsed Output (1Wh=1 Pulse)

Part No.	Description
<b>EMLITE1015</b>	Emlite EMP1 3 Phase Direct Connect



Country of Origin:  
United Kingdom

**For further information or enquiries, please contact us**

Call: 01773 534 555 | Email: [meters@dmsltd.com](mailto:meters@dmsltd.com) | Website: [dmsltd.com](http://dmsltd.com)

**DMS** METERING SOLUTIONS

## SDM120 Single Phase Electric Meter

The SDM120 range of electric meters are for use on Single Phase Electric supplies. These particular variants are for direct connection within the circuit they are measuring. You can also find a CT operated version if preferred.

Taking up just a single module slot, the SDM120 meters mount onto a DIN Rail. These meters have a digital display for simple readout, but the main use of these meters are apart of automatic meter reading networks, using one of the on board communication outputs as listed below.

The SDM120 meters are MID approved, allowing them to be used for billing and fiscal purposes.

### Standard Features:

Electric Phase:	Single Phase
Compliance:	MID Approved
Connection Type:	Direct Connection
Mounting Style:	DIN Rail Mounted
Communication Outputs:	M-Bus, MODBus, Pulsed

### Additional Features:

- 1 Module
- 45A

Part No.	Description
----------	-------------

#### SDM120 Single Phase Electric Meter

<b>SDM120-PULSE-DC</b>	SDM120DB MID - Eastron Single Phase <i>Pulse Output, with Backlight</i>
------------------------	---

<b>SDM120-MBUS-DC</b>	SDM120M-Bus MID - Eastron Single Phase <i>Mbus and Pulse Output</i>
-----------------------	---

<b>SDM120-MODBUS-DC</b>	SDM120M MID - Eastron Single Phase <i>RS485 and Pulse Output</i>
-------------------------	--

#### SDM120CT Single Phase Electric Meter

<b>SDM120-PULSE-CT</b>	SDM120CT-Pulse MID - Eastron Single Phase* <i>Pulse Output</i>
------------------------	--

<b>SDM120CT-MBUS-CT</b>	SDM120CTM-Bus MID - Eastron Single Phase* <i>Mbus and Pulse Output</i>
-------------------------	--

<b>SDM120-MODBUS-CT</b>	SDM120CTModbus MID - Eastron Single Phase* <i>Modbus RS485 and Pulse Output,</i>
-------------------------	--

\* CT Operated (Supplied separately)



SDM120DB



SDM120M



SDM120CT

### Single phase Split Core Current Transformers

Current Transformers for **SDM120CT** Meters are available. See Page **90-91**



**SDM120**  
**Datasheet**

**For further information or enquiries, please contact us**



SDM230-PULSE-DC



SDM230-MODBUS-DC



SDM230-LORA-DC


**SDM230**  
**Datasheet**

## SDM230 Single Phase Electric Meter

The SDM230 electric meters cater to single-phase applications, offering direct connection to the circuits under monitoring. These meters boast MID Approval, qualifying them for use in billing and fiscal applications. Featuring a range of communication outputs, including options for wired and wireless systems, the SDM230 meters seamlessly integrate into projects with automatic meter reading strategies.

Mounted on a DIN Rail, these meters occupy two modules and come equipped with a digital display, ensuring easy readout of the data for enhanced user convenience.

### Standard Features:

<b>Electric Phase:</b>	Single Phase
<b>Compliance:</b>	MID Approved
<b>Connection Type:</b>	Direct Connection
<b>Display:</b>	LCD display
<b>Mounting Style:</b>	DIN Rail Mounted
<b>Communication Outputs:</b>	LoRaWAN, M-Bus, Modbus, Pulsed

### Standard Features:

- 2 Module
- 100A

Part No.	Description
<b>SDM230-PULSE-DC</b>	SDM230BI-MID - Eastron Single Phase <i>Pulse Output, Import/Export Energy and Power</i>
<b>SDM230M-Bus V2 MID</b>	SDM230M-Bus V2 MID - Eastron Single Phase <i>Mbus and Pulse Output</i>
<b>SDM230-MODBUS-DC</b>	SDM230Modbus MID - Eastron Single Phase <i>Modbus RS485 and Pulse Output</i>
<b>SDM230-LORA-DC</b>	SDM230 MID - Eastron Single Phase <i>LoRaWAN</i>

## Can't find what you are looking for?

Our team can assist and advise you with any questions you have and help you source the correct product from individual components through to complete solutions

**Call: 01773 534 555**

## SDM630 & SDM630MCT Series Three Phase Electric Meter

The SDM630 Series is a three-phase multifunction 100A direct fed DIN rail mounted electricity meter.

The SDM630MCT Series is a three-phase multifunction 100A CT operated DIN rail mounted electricity meter. Both models can measure and display the characteristic of 1p2w, 3p3w and 3p4w supplies, With a user friendly menu navigation and highly visible LCD display, The SDM630 requires Mains Voltage inputs (live in and live out, neutral in and neutral out) in order to operate, it is self-supplied so does not require an external auxiliary supply.

We have a range of options from a pulsed output version for cost savings and Modbus RTU combined with dual pulsed outputs or MBUS also combined with dual pulsed outputs. Finally, we also have an option for multi-tariff.

Certified in the UK according to EU Directive 2014/32/EU, these meters carry the MID Certificate number 0120/SGS0142, ensuring compliance and reliability for energy monitoring applications.

### SDM630 DIN Rail Mounted Electric Meter

The SDM630 electric meters are primarily used in three phase applications but they can also provide readings for a single phase.

#### Standard Features:

<b>Electric Phase:</b>	Single Phase, Three Phase
<b>Compliance:</b>	MID Approved
<b>Connection Type:</b>	Direct Connection
<b>Display:</b>	LCD display
<b>Mounting Style:</b>	DIN Rail Mounted
<b>Communication Outputs:</b>	M-Bus, MODBus, Pulsed, LoRaWAN



Part No.	Description
<b>SDM630-MBUS-DC</b>	SDM630M-Bus MID - Eastron Three Phase <i>Mbus and Pulse Output</i>
<b>SDM630-MODBUS-DC</b>	SDM630Modbus MID V2 - Eastron Three Phase <i>Mod-Bus RS485 RTU and Pulse Output</i>




**SDM630 Datasheet**

### SDM630MCT DIN Rail Mounted Electric Meter

The SDM630MCT electric meters are primarily used in three phase applications.

#### Standard Features:

<b>Electric Phase:</b>	Single Phase, Three Phase
<b>Compliance:</b>	MID Approved
<b>Connection Type:</b>	Current Transformers
<b>Display:</b>	LCD display
<b>Mounting Style:</b>	DIN Rail Mounted
<b>Communication Outputs:</b>	M-Bus, MODBus, Pulsed, LoRaWAN



Part No.	Description
<b>SDM630-MBUS-CT</b>	SDM630M-CT M-Bus MID - Eastron <i>Mbus and Pulse Output</i>
<b>SDM630-MODBUS-CT</b>	SDM630M-CT Modbus MID - Eastron <i>Modbus and Pulse Output</i>




**SDM630MCT Datasheet**





## Norax3 Three-Phase Electric Meter



### Additional Features:

- Bidirectional measurement of active power
- Four-quadrant measurement of reactive power
- Measurement of voltage, current, instantaneous power and maximum power
- Load profile
- Communication protocol: DLMS/COSEM
- Local communication: optical port, serial port RS-485 (optional), Wireless M-Bus 868 MHz (EN 13757) (optional)
- Firmware upgrade (according WELMEC 7.2)
- Resistance to external magnetic field

The partnership between DMS and Apator extends further, having established our strong partnership in the water industry we have now embraced their electrical devices.

Despite being labelled as a three-phase meter, the Norax3 is also capable of measuring single phase circuits up to 100A as well. With its multipurpose design, it can measure 2-wire, 3-wire or 4-wire networks with direct connection to the circuits. The Norax3 is able to measure active and reactive power as well as displaying voltage, current, instantaneous power and maximum power.

The Norax3 has several communication output options, including pulse, Modbus RS-485 and Wireless M-Bus (868MHz). DLMS/COSEM is also available.

The design of the Norax3 allows it to mount to any wall or surface, with an extended cover to allow easy wiring and connection of the Live and Neutral circuits. The meter has a segmented LCD for showing the data locally to users and consumers alike.

### Standard Features:

<b>Electric Phase:</b>	Three Phase
<b>Compliance:</b>	MID Approved
<b>Connection Type:</b>	Direct Connection
<b>Display:</b>	Segment LCD display
<b>Communication Outputs:</b>	Pulse, Modbus, wM-Bus
<b>Housing:</b>	IP53 or IP54



Country of Origin:  
Poland



**Norax3 Three-Phase  
Electric Meter Datasheet**

Part No.	Description
<b>NORAX1000</b>	Norax 3 - 5(100)A, 3x230/400V

# DMS Metering Solutions proudly affiliated with



## ESCT-T24 Single Phase Split Core Current Transformer

The Eastron ESCT-T series of split-core current transformers offers a swift and effortless installation process. Their split-core design facilitates non-contact current measurements through magnetic field induction, eliminating the need to disconnect primary wires during CT installation. This method ensures safer, easier, and more portable current measurements. Additionally, an internal precision burden resistor across the secondary winding of the CT ensures a safe low-voltage output and enables safe opening of the secondary circuit.



### Standard Features:

- Single phase split core CT
- 100A to 250A range
- Complete with 1m flying lead
- 24mm aperture

Part No.	Description
<a href="#">ESCT-T24-100/5A</a>	ESCT T24 100/5A 24mm Diameter Split Core
<a href="#">ESCT-T24-150/5A</a>	ESCT T24 150/5A 24mm Diameter Split Core
<a href="#">ESCT-T24-200/5A</a>	ESCT T24 200/5A 24mm Diameter Split Core
<a href="#">ESCT-T24-250/5A</a>	ESCT T24 250/5A 24mm Diameter Split Core



[ESCT-T24 Datasheet](#)

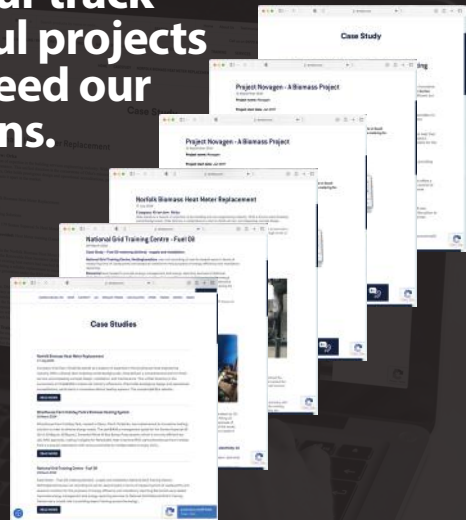
For further information or enquiries, please contact us

## We take pride in our track record of successful projects that meet and exceed our clients' expectations.

Discover the benefits of innovative, industry-leading metering products and technologies and how they are being used to make a difference in real-world applications

At DMS we are proud of the projects we have delivered and showcase just some of our successes.

Find out more at [dmsltd.com/casestudies](https://dmsltd.com/casestudies)





## ESCT-T36 Single phase Split Core Current Transformer

The TA36 Range of Split Core Current Transformers is designed to complement any 100mA CT Operated Electricity Meters seamlessly. Thanks to their split-core design, installation is hassle-free, eliminating the need to break any conductors. For Single Phase applications, individual TA36 CTs can be used. Additionally, for Three Phase applications, three pieces of these current transformers can be employed. The aperture of this model accommodates 36mm<sup>2</sup> cables, ensuring compatibility with various setups and enhancing flexibility in installation.

### Standard Features:

- Single phase split core CT
- 100A to 600A range
- Complete with 1m flying lead
- 36mm aperture

Part No.	Description
<b>ESCT-T36-100/5A</b>	ESCT-T36-100/5A, 36mm Diameter Split Core
<b>ESCT-T36-150/5A</b>	ESCT-T36-150/5A, 36mm Diameter Split Core
<b>ESCT-T36-200/5A</b>	ESCT-T36-200/5A, 36mm Diameter Split Core
<b>ESCT-T36-300/5A</b>	ESCT-T36-300/5A, 36mm Diameter Split Core
<b>ESCT-T36-400/5A</b>	ESCT-T36-400/5A 36mm Diameter Split Core
<b>ESCT-T36-500/5A</b>	ESCT-T36-500/5A 36mm Diameter Split Core
<b>ESCT-T36-600/5A</b>	ESCT-T36-600/5A 36mm Diameter Split Core



**ESCT-T36**  
**Datasheet**

For further information or enquiries, please contact us

## Training tailored to you

Join us for bespoke metering, controls  
 and data collecting training

Heat, Water & Gas Metering | Data Collection | Safety & Controls

Book online at [dmsltd.com/training](https://dmsltd.com/training) or [dmsltd.com/cpd-training](https://dmsltd.com/cpd-training)

# elvaco

## Elvaco Edge: The World's First Fully Connected M-Bus Gateway



### Revolutionising Meter Connectivity

Elvaco introduces the Elvaco Edge, a pioneering gateway that supports both wired and wireless meters with best-in-class, battery-driven options. This groundbreaking device offers:

#### Features:

- **Integrated Connectivity:** Instant and seamless access to your meter data.
- **Easy Installation:** No complex setup required—just mount and go.
- **Versatile Compatibility:** Connects with any M-Bus meter (wired or wireless) conforming to EN-13757 (EN1434) and OMS standards.

### Elevating M-Bus/wM-Bus Solutions

The Elvaco Edge represents the next generation of M-Bus metering gateways, offering a completely plug-and-play experience. Installation and configuration are made simple with the Elvaco mobile app, while Elvaco EVO allows for easy visualization of meter data.

### Advanced Communication Capabilities

The Elvaco Edge communicates over mobile networks using LTE-M and NB-IoT. It is capable of reading over 1000 wireless M-Bus meters and four wired meters, compatible with all meters adhering to the M-Bus standard protocol.

### Seamless Upgrade for Existing Systems

For customers with existing CMI-Boxes in the field, upgrading to Elvaco Edge is straightforward. The device uses the same mounting holes as the CMI-Box, and the exchange process is quick and easy with the Elvaco mobile app. Simply power on the Elvaco Edge and follow a few simple steps to receive your meter data promptly.

Part No	Description
ELVA7000	Edge M-Bus Gateway – Wired M-Bus, Battery
ELVA7005	Edge M-Bus Gateway – Wired M-Bus, 230V Mains
ELVA7010	Edge wM-Bus Gateway – Wireless M-Bus, Battery
ELVA7015	Edge wM-Bus Gateway – Wireless M-Bus, 230V Mains



Elvaco Edge  
Range



# Data Collection

Comprehensive solutions for all Data Collection, Automatic Meter Reading (AMR) and Billing applications.

Elvaco Edge	92
Elvaco CMc LTE Box	95
Elvaco CGc IP Box	96
Elvaco CMe2100 LTE	97
Elvaco CMe3100 Metering Gateway	98
Elvaco CMeX M-Bus Extenders	99
PadPuls Pulse Adaptors	100
CMeX40 - M-Bus I/O Module	101

Brands you can trust

**elvaco**



## Elvaco Energy Connectivity & Infrastructure

**elvaco**

Remote meter reading, sub-metering or indoor climate control - with high-quality products and first-class services

Elvaco supports utilities and real-estate companies in the implementation of metering projects. The partnership between DMS and Elvaco combines a broad range of expert knowledge based on more than 35 years of industry experience with a visionary mindset that recognises the potential of innovative technologies. We create and supply efficient and sustainable solutions with state-of-the-art technologies in the field of the Internet of Things, but also in classic metering and network protocols. Improving the utilisation of available energy and optimising energy efficiency are particularly important objectives for us. Together, we work every day to turn this vision into reality.

Elvaco sees itself as a full-range supplier that combines a wide variety of products, services and competences in one portfolio. From high-quality meters, sensors and measuring devices to meter connectivity modules and accessories, we offer a selected product range of items from renowned premium manufacturers. To interconnect the individual components of the metering system, a comprehensive infrastructure is used that is based on the state-of-the-art technologies.

### Technologies Covered By ELVACO

- IoT
- MQTT
- Mobile Network (2G/4G/LTE)
- Fixed Network (Ethernet)
- M-Bus wired/wireless
- Modbus, DLMS, BACnet
- LoRaWAN



## Elvaco CMc LTE Box

The CMc LTE Box offers a streamlined solution for remote meter reading via mobile networks. By combining the CMe2100 LTE M-Bus Metering Gateway with an M-Bus Master from the CMeX10-13S Series, it enables the reading of up to 256 M-Bus meters.

Communication occurs seamlessly over the mobile LTE (4G) network, with an automatic fallback function ensuring reliability. Delivered fully pre-assembled and wired in a protective enclosure, the CMc LTE Box requires minimal installation effort, providing a convenient and efficient solution for remote metering applications.

### Additional Features:

- Real-time clock backup:** 12h
- Real-time clock accuracy:** <2 s/day
- Script engine:** Intelligent script engine for active content generation
- Software/firmware update:** HTTP
- Metering reports:** HTTP, FTP, SMTP (e-mail)

CM-Box



CMe2100 LTE



CMeX11S



CMeX12S

CMeX13S



**Elvaco CMc  
LTE Box  
Range**



Country of Origin:  
Sweden

Part No Description

M-Bus	
<b>ELVA6029</b>	CMc LTE M-Bus for 16 meters <i>Installed in CM-Box 3, CMe2100 LTE, 16 meters</i>
<b>ELVA6030</b>	CMc LTE M-Bus for 32 meters <i>Installed in CM-Box 12, CMe2100 LTE &amp; CMeX10S, 32 meters</i>
<b>ELVA6032</b>	CMc LTE M-Bus for 64 meters <i>Installed in CM-Box 12, CMe2100 LTE &amp; CMeX11S, 64 meters</i>
<b>ELVA6034</b>	CMc LTE M-Bus for 128 meters <i>Installed in CM-Box 12, CMe2100 LTE &amp; CMeX12S, 128 meters</i>
<b>ELVA6036</b>	CMc LTE M-Bus for 256 meters <i>Installed in CM-Box 12, CMe2100 LTE &amp; CMeX13S, 256 meters</i>

Part No Description

Enhanced WM-Bus	
<b>ELVA6045</b>	CMc LTE Enhanced WM-Bus 1x32 <i>Installed in CM-Box 12, CMe2100 LTE &amp; CMeX50, 32 meters</i>



## Elvaco CGc IP Box

Elvaco's CGc IP Box comprises the M-Bus Metering Gateway CMe3100, coupled with either an M-Bus Master from the CMeX10-135 Series or the CMeX50 Wireless M-Bus Receiver. Fully assembled and connected within a protective enclosure upon delivery, this turn-key solution is tailored for reading up to 512 M-Bus meters.

The CGc IP Box efficiently compiles meter data into customized reports and transmits it to a receiving system via the fixed network, adhering to a set time schedule and integration protocol. Additionally, when paired with our LTE-router in A-Box, meter data can be transmitted over the mobile network, enhancing flexibility and connectivity options for remote metering applications.

### Additional Features:

<b>Interfaces:</b>	Integrated M-Bus Master, M-Bus slave
<b>M-Bus standard:</b>	EN 13757
<b>Transparent M-Bus:</b>	TCP/IP and M-Bus 2-wire slave interface
<b>M-Bus search modes:</b>	Primary, secondary

Part No Description

M-Bus	
<b>ELVA4010</b>	CGc IP 1x8 M-Bus CM-Box 12 <i>CMe3100, 8 meters</i>
<b>ELVA4012</b>	CGc IP 1x32 M-Bus CM-Box 12 <i>CMe3100, CMeX10S 32 meters</i>
<b>ELVA4014</b>	CGc IP 1x64 M-Bus CM-Box 12 <i>CMe3100, CMeX11S, 64 meters</i>
<b>ELVA4016</b>	CGc IP 1x128 M-Bus CM-Box 12 <i>CMe3100, CMeX12S, 128 meters</i>
<b>ELVA4018</b>	CGc IP 1x256 M-Bus CM-Box 12 <i>CMe3100, CMeX13S, 256 meters</i>
<b>ELVA4020</b>	CGc IP 1x512 M-Bus CM-Box 24 <i>CMe3100, 2x CMeX13S, 512 meters</i>

Part No Description

Enhanced WM-Bus	
<b>ELVA4030</b>	CGc IP 1x8 Enhanced WM-Bus CM-Box 12 <i>CMe3100, CMeX50, Filter/Amplifier</i>



CMe3100



CMe2100 LTE



CMeX11S



CMeX12S



CMeX13S



Country of Origin:  
Sweden



Elvaco CGc  
IP Box  
range



## Elvaco CMe2100 LTE M-Bus Gateway



The CMe2100 LTE serves as an M-Bus Metering Gateway tailored for mobile networks, featuring automatic fallback capabilities. Capable of reading data from up to 256 meters, it compiles meter data into customized reports and transmits it to a receiving system. Utilizing an IR interface, it establishes communication with devices from Elvaco's CMe/CMeX-series as well as ABB electricity meters. Compatible with all M-Bus meters, the CMe2100 LTE can be configured and updated conveniently via SMS or HTTP protocols.

### Standard Features:

- IP20 Protection
- DIN-rail mounting
- M-Bus, Wireless M-Bus Communications

### Additional Features:

Operating Temperature: -20 °C to +55 °C  
 Protection Class: IP55  
 Mounting Style: Wall Mounted  
 Communication Outputs: GSM/LTE (SIM Card)



**CMe2100 LTE  
Datasheet**



Country of Origin:  
Sweden

Part No	Description
<b>ELVA2000</b>	CMe2100 LTE 230v Powered M-Bus Gateway <i>16T/16 Mobile Network (Excluding Antenna)</i>
<b>ELVA2002</b>	CMe2100 LTE 230v Powered M-Bus Gateway <i>16T/32 Mobile Network (Excluding Antenna)</i>
<b>ELVA2004</b>	CMe2100 LTE 230v Powered M-Bus Gateway <i>16T/64 Mobile Network (Excluding Antenna)</i>
<b>ELVA2006</b>	CMe2100 LTE 230v Powered M-Bus Gateway <i>16T/128 Mobile Network (Excluding Antenna)</i>
<b>ELVA2008</b>	CMe2100 LTE 230v Powered M-Bus Gateway <i>16T/256 Mobile Network (Excluding Antenna)</i>

**For further information or enquiries, please contact us**

## Training tailored to you

Join us for bespoke metering, controls  
and data collecting training

Heat, Water & Gas Metering | Data Collection  
Safety & Controls

Book online at [dmsltd.com/training](http://dmsltd.com/training) or [dmsltd.com/cpd-training](http://dmsltd.com/cpd-training)

## Elvaco CMe3100 Metering Gateway

The CMe3100 stands as an M-Bus Metering Gateway tailored for Fixed Networks, now with an enhanced capacity to read up to 512 meters/slaves. This device efficiently compiles meter data into customised reports and delivers it to a receiving system according to a predefined schedule and integration protocol over the fixed network.

Compatible with all meters utilising the M-Bus standard protocol and Elvaco's CMe/CMeX Series, the CMe3100 offers seamless integration into various metering projects. Its user-friendly web interface facilitates easy configuration and updates, while its support for a wide range of integration protocols - including ModBus, DLMS, JSON, REST and BACnet - makes it suitable for diverse applications.

Through its continuous readout feature, the CMe3100 enables real-time delivery of meter data, ideal for applications such as automatic control systems. Moreover, its flexible licensing scheme allows for cost-effective customisation at the point of purchase and provides the flexibility to extend product functionality without hardware changes in the future.

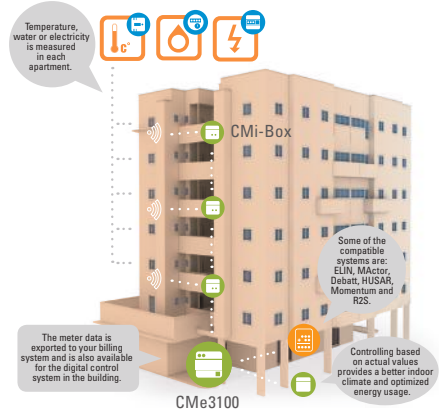
### Additional Features:

**Operating Temperature:** -20 °C to +55 °C  
**Network:** RJ45 (Ethernet)  
**Protection Class:** IP55  
**Mounting Style:** DIN-rail mounting  
**Communication Outputs:** M-Bus, MODBus

### Standard Features:

- IP20 Protection
- M-Bus, Wireless M-Bus Communications
- TCP/IP and M-Bus 2-wire slave interface

Part No	Description
<b>ELVA2050</b>	CMe3100 230v Powered M-Bus Master <i>8 Devices - TCP/IP</i>
<b>ELVA2051</b>	CMe3100 230v Powered M-Bus Master <i>32 Devices - TCP/IP</i>
<b>ELVA2052</b>	CMe3100 230v Powered M-Bus Master <i>64 Devices - TCP/IP</i>
<b>ELVA2053</b>	CMe3100 230v Powered M-Bus Master <i>128 Devices - TCP/IP</i>
<b>ELVA2054</b>	CMe3100 230v Powered M-Bus Master <i>256 Devices - TCP/IP</i>
<b>ELVA2056</b>	CMe3100 230v Powered M-Bus Master <i>512 Devices - TCP/IP</i>



**CMe3100 Datasheet**



Country of Origin:  
Sweden

**For further information or enquiries, please contact us**



## CMeX M-Bus Extenders

With options of wired and wireless communication, the CMeX range of M-Bus extenders allow the CMe2100 and CMe3100 masters to communicate with larger networks of devices.

Using 230V mains power and infrared communication to pass the data to the master device, the CMeX range offers flexibility in the quantity of devices to be measured. The standard CMeX10-135 masters are used in wired M-Bus networks, whereas the CMeX50 boasts the capability to connect to a maximum of 32 wired M-Bus devices / 800 wireless M-Bus devices.

Part No	Description
<b>ELVA1060</b>	CMeX 50 M-Bus Master - Wired & Wireless <i>230vac, Up to 32 Wired Slaves, 500 Wireless</i>
<b>ELVA1055</b>	CMeX 105 M-Bus Master Extender 32 Slaves <i>CMeX 105 M-Bus Master Extender 32 Slaves</i>
<b>ELVA1056</b>	CMeX 115 M-Bus Master Extender 64 Slaves <i>CMeX 115 M-Bus Master Extender 64 Slaves</i>
<b>ELVA1057</b>	CMeX 125 M-Bus Master Extender 128 Slaves <i>CMeX 125 M-Bus Master Extender 128 Slaves</i>
<b>ELVA1058</b>	CMeX 135 M-Bus Master Extender 256 Slaves <i>CMeX 135 M-Bus Master Extender 256 Slaves</i>

### Standard Features:

- Includes magnetic mount antenna, USB cable, RS232 cable

### Additional Features:

- Operating Temperature:** -20 °C to +55 °C
- Installation Category:** CAT 3
- connection:** Cable 0.5-2.5 mm<sup>2</sup>
- M-Bus standard:** EN 13757 Standard open protocol
- Network:** RJ45 (Ethernet)
- Protection Class:** IP55
- Mounting Style:** Wall Mounted
- Communication:** M-Bus, MODBUS, Pulsed



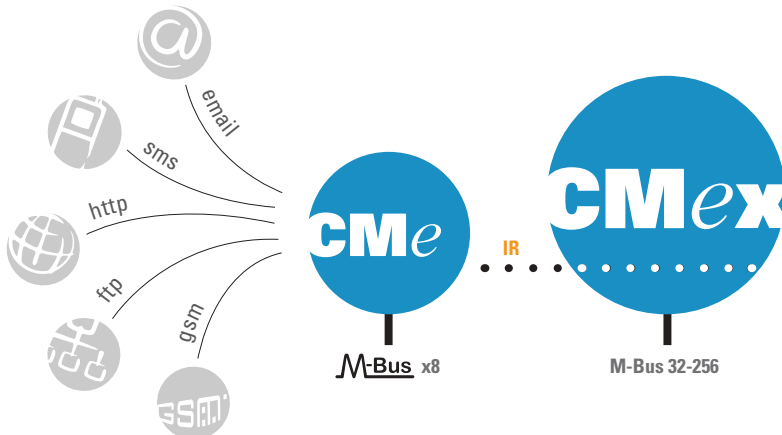
**CMeX50 M-Bus Datasheet**



**CMeX105-135 Datasheet**



Country of Origin: Sweden



**For further information or enquiries, please contact us**

## PadPuls Pulse Adaptors

The PadPuls M2 is a 2-channel pulse adaptor that enables the integration of up to 2 meters with pulse output into the M-Bus system as slaves.

### Standard Features:

- Two separate pulse inputs
- Can safely detect up to 15 pulses per second at each input, with pulse debouncing
- Adjustable pulse value
- Plug-in terminals for simplified installation wiring
- Unit selection (e.g., Wh, kWh, MWh, kJ, m3, l...)
- Counter length: 8 decimal digits
- Due-date function with integrated real-time clock
- Optional: One yearly value and 15 monthly values
- M-Bus protocol compliance with EN13757-2 and -3
- Fully parameterizable via M-Bus, with overwrite protection
- Transmission rates: 300 and 2400 baud with auto baud detection
- Fully operable with integrated battery in case of M-Bus failure
- Wall-mountable case dimensions: 80 x 80 x 52 mm
- Two battery options available
- IP54 protection (IP65 possible)



ELVA8100



ELVA8099



ELVA8102

Part No	Description
<b>ELVA8100</b>	Relay PadPuls M2 Wall Mounted
<b>ELVA8099</b>	Relay PadPuls M2C DIN-mounted
<b>ELVA8102</b>	Relay PadPuls M2W Wall Mounted Pulse to Wireless M-Bus

### M2 Wall Mounted



### M2C DIN-Mounted



### M2W Wall Mounted



Country of Origin:  
Sweden



PadPuls Pulse  
Adaptors  
Datasheet



PadPuls M2  
Datasheet



## CMex40 - M-Bus I/O Module



The CMex40 functions as an I/O module, capable of reading input signals and controlling output signals, effectively serving as a remote relay. Equipped with an IR interface, it facilitates seamless communication with products from Elvaco's CMe/CMex Series without the need for cables, enhancing convenience and flexibility in various applications.

**Standard Features:**

- M-Bus is a multi-drop 2-wire bus

**Additional Features:**

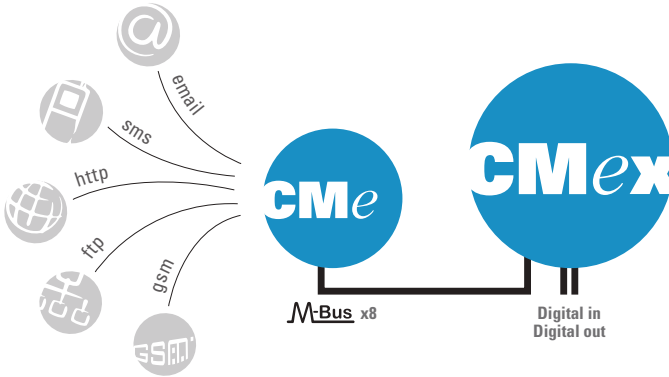
Interfaces: IR, M-Bus slave

M-Bus standard: EN 13757 Standard open protocol

M-Bus Controlled: Relay Remote Disconnect

Mounting: DIN Rail Mounted

Part No	Description
<b>ELVA1067</b>	CMex40 M-Bus I/O Remote Disconnect Module



Country of Origin: Sweden



**CMex40 Datasheet**

**For further information or enquiries, please contact us**

# DMS Metering Solutions

proudly affiliated with





# Balancing and Control Solutions for Energy Efficient Hydronic Applications

## Introducing the Danfoss AB-QM 4.0

Best-in-class PICV with scaling and clogging resistant design

The Danfoss AB-QM was the first of its kind control valve for HVAC heating and cooling applications. AB-QM 4.0 is its next level successor.

The basic principles haven't changed; it is a control valve with automatic flow limitation and built-in differential pressure controller. The control performance is very accurate and the valve has a – still – unique valve authority of 100%.

But the value the AB-QM 4.0 valves provide has improved a lot. AB-QM 4.0 is the best-in-class PICV currently on the market. The AB-QM 4.0 is available in DN 15 up to DN 32. There are versions with and without test plugs. And versions with internal or external thread connections. The flow capacity increases to a broad range of 20 l/h up to 5,000 l/h and can accurately be measured with the PFM 1000 measuring instrument via Bluetooth on iOS and Android devices.

- DN15 up to DN32
- Balancing Valve



# Valves

DMS Metering Solutions is your premier supplier for high-quality valves, tailored for both water and gas solutions. Our extensive product range includes:

- **Solenoid Valves:** Precision-engineered for reliable control of water and gas flow, these valves ensure optimal performance and safety in various applications.
- **Non-Return Valves:** Designed to prevent backflow and maintain system integrity, our non-return valves are essential for safeguarding your piping systems.
- **Balancing Valves:** Critical for maintaining even distribution and efficient operation, our balancing valves help achieve precise control over system pressures and flow rates.

At DMS Metering Solutions, we prioritise quality and reliability, ensuring that our valves meet the stringent demands of modern infrastructure and industrial requirements. Whether you need solutions for residential, commercial, or industrial projects, our valves are built to deliver exceptional performance and durability. Trust DMS Metering Solutions for all your water and gas valve needs.

Danfoss AB-QM 4.0 Control Valve	<b>102</b>
GSV Gas Solenoid Valves	<b>104</b>
GCR Manual Reset Valves	<b>105</b>
GCA Gas Solenoid Valves	<b>106</b>
GSW Water Solenoid Valves	<b>107</b>
AB-QM Valves	<b>108</b>

Brands you can trust



c o s t e r g r o u p  
PERSONAL AUTOMATION



## GSV Gas Solenoid Valves

The Gold Seal GSV solenoid valves are widely used in gas distribution to provide isolation and emergency shut-off.

The valves can be used on various hydrocarbon gases including natural gas, methane, and liquid petroleum gas.

### OPERATION

The GSV solenoid valves will normally be in the closed position, but when energised will open quickly and a blue indicator light will be lit on the terminal box attached to the coil.

There are G $\frac{1}{4}$  holes on both sides of the valve body and at the bottom ( $\frac{1}{2}$ " to 2" size only).

These can be used for various applications but notably a CPI (closed position indicator) or gas proving system.

Opening time:	< 1 second	
Closing time:	< 1 second	
Max. operating frequency:	20 time per minute	
Maximum working pressure:	$\frac{1}{2}$ " to 1"	360 mbar
	1 $\frac{1}{4}$ " to 2"	200 mbar
	DN65 to DN150	200 mbar
Integral filter:		
Protection level:		IP54
Working temperature:		-15 to 60C
Coil temperature:		65C
Body connections:	$\frac{1}{2}$ " to 2"	BS EN 10226
Threaded:	$\frac{1}{2}$ " to 2"	BS EN 10226
Flanged PN16:	DN65 to DN150	BS EN 1092
Seal material:		NBR polymer
Body material:		Aluminium alloy
Spring material:		AISI 302 stainless steel

### Standard Features:

<b>Connection Type:</b>	Flanged, Screwed
<b>Connection Size:</b>	1/2"-2" (Screwed) DN65-100 (Flanged PN16)
<b>Power Supply:</b>	230Vac Mains Powered, 24Vac Mains Powered

### Additional Features:

- Gas Solenoid Valve
- Automatic Reset
- N/C, 230Vac Mains Powered
- IP65 Rated

Part No. Description

#### Screwed Connection

<b>GSV-015-230V</b>	Gas Solenoid Valve, 1/2"
<b>GSV-020-230V</b>	Gas Solenoid Valve, 3/4"
<b>GSV-025-230V</b>	Gas Solenoid Valve, 1"
<b>GSV-032-230V</b>	Gas Solenoid Valve, 1.25"
<b>GSV-040-230V</b>	Gas Solenoid Valve, 1.5"
<b>GSV-050-230V</b>	Gas Solenoid Valve, 2"

Part No. Description

#### Flanged PN16 Connection

<b>GSV-065-230V</b>	Gas Solenoid Valve, DN65
<b>GSV-080-230V</b>	Gas Solenoid Valve, DN80
<b>GSV-100-230V</b>	Gas Solenoid Valve, DN100



GSV25



GSV50



GSV65



**GSV Valves  
Datasheet**



## GCR Manual Reset Valves

The GCR Manual Reset Valve is designed to operate on a normally closed basis, ensuring maximum safety and control. These manual reset gas solenoid valves are specifically engineered to shut off in response to danger signals detected by gas detectors (such as methane, LPG, carbon monoxide, and similar dry gases) or safety thermostats, and in the event of a power outage.

For enhanced safety, the solenoid valve can only be reset with an active power supply, provided no danger is detected by the gas detector and the manual reset mechanism has been engaged.

### \*\*IMPORTANT NOTE:\*\*

The valve will not open by merely powering the coil. It must be manually reset by pressing the reset mechanism, as detailed in section 4.0 of the datasheet.

The valves can also be equipped with a CPI switch (optional for DN15-DN150; factory-fitted for DN200-DN300) to remotely monitor the valve's plunger position (closed). These valves comply with reference standards EN 161 and EN 13611.

Additionally, the GCR range is available in various voltages, including 24VAC, 24VDC, 12VAC, 12VDC, and 110V.

### Standard Features:

Connection Type:	Flanged, Screwed
Connection Size:	15-300mm
Power Supply:	230Vac, 24Vac, 24Vdc, 12Vac, 12Vdc & 110V

### Additional Features:

- Class A, Connection sizes - 15mm to 300mm
- Screwed/Flanged



Country of Origin:  
Italy



Part No. Description

### Screwed Connection

<b>GCR1000</b>	GCR815 15mm 240v Safety Shut Off Valve Class A, 1/2" BSPF Screwed
<b>GCR1005</b>	GCR820 20mm 240v Safety Shut Off Valve Class A, 3/4" BSPF Screwed
<b>GCR1010</b>	GCR825 25mm 240v Safety Shut Off Valve Class A, 1" BSPF Screwed
<b>GCR1015</b>	GCR832 32mm 240v Safety Shut Off Valve Class A, 1.25" BSPF Screwed
<b>GCR1020</b>	GCR840 40mm 240v Safety Shut Off Valve Class A, 1.5" BSPF Screwed
<b>GCR1025</b>	GCR850 50mm 240v Safety Shut Off Valve Class A, 2" BSPF Screwed



GCR DN 15-50  
Datasheet



GCR DN 65-300  
Datasheet

Part No. Description

### Flanged Connection

<b>GCR1030</b>	GCR865 65mm 240v Safety Shut Off Valve Class A, Flanged PN16 DN65
<b>GCR1035</b>	GCR880 80mm 240v Safety Shut Off Valve Class A, Flanged PN16 DN80
<b>GCR1040</b>	GCR8100 100mm 240v Safety Shut Off Valve Class A, Flanged PN16 DN100
<b>GCR1041</b>	GCR4100 100mm 24vac Safety Shut Off Valve Class A, Flanged PN16 DN100
<b>GCR1042</b>	GCR4150 150mm 24vac Safety Shut Off Valve Class A, Flanged PN16 DN150
<b>GCR1045</b>	GCR8125 125mm 240v Safety Shut Off Valve Class A, Flanged PN16 DN125
<b>GCR1050</b>	GCR8150 150mm 240v Safety Shut Off Valve Class A, Flanged PN16 DN150
<b>GCR1055</b>	GCR8200C 200mm 240v Safety Shut Off Valve Class A, Flanged PN16 DN200
<b>GCR1060</b>	GCR8250C 250mm 240v Safety Shut Off Valve Class A, Flanged PN16 DN250

## GCA Gas Solenoid Valves

GCA Gas Solenoid Valves from Coster are used to shut off Gas Supplies in an emergency. When the coils within the valves are not powered up the valve remains closed in order to prevent any gas from passing downstream. Then as power is reapplied to the coils they automatically reset themselves to permit Gas flow again.

The sizes available for the GCA range start at 15mm and are supplied all the way up to 300mm. From 15-50mm all of the Valves have a BSP Female threaded connection and the Valves at 65mm and above have a PN16 Flanged connection. The standard power requirement for the GCA range is 230vac but a 24v version can be supplied instead on request, just contact us before ordering.

These Solenoid Valves (32mm - 150mm) can be installed in either Horizontal or Vertical runs of pipework\*. The only restriction is that the Coil on top of the Valve must not point towards the floor otherwise the Valve is at risk of not closing properly. A Closed Position Indicator (or CPI Switch for short) can be added to the GCA Valves in order to provide a remote indication of when the Valve is closed or not. For the larger 200-300mm sized units this is supplied as standard. Please note these can only be fitted horizontally.

### Standard Features:

<b>Connection Type:</b>	Flanged, Screwed
<b>Connection Size:</b>	15-300mm
<b>Power Supply:</b>	230Vac Mains Powered, 24Vac Mains Powered



Part No.	Description
<b>Screwed Connection</b>	
<b>GCA1001</b>	GCA815 15mm 240v Safety Shut Off Valve <i>Class A Screwed 1/2"BSPP</i>
<b>GCA1002</b>	GCA820 20mm 240v Safety Shut Off Valve <i>Class A Screwed 1/2"BSPP</i>
<b>GCA1003</b>	GCA825/500 25mm 240v Safety Shut Off Valve <i>Class A Screwed 1/2"BSPP</i>
<b>GCA1004</b>	GCA832/360 32mm 240v Safety Shut Off Valve <i>Class A Screwed 1/2"BSPP</i>
<b>GCA1005</b>	GCA840/360 40mm 240v Safety Shut Off Valve <i>Class A Screwed 1/2"BSPP</i>
<b>GCA1006</b>	GCA850/360 50mm 240v Safety Shut Off Valve <i>Class A Screwed 1/2"BSPP</i>

Part No.	Description
<b>Flanged Connection</b>	
<b>GCA1007</b>	GCA865 65mm 240v Safety Shut Off Valve <i>Class A Screwed 1/2"BSPP</i>
<b>GCA1008</b>	GCA880 80mm 240v Safety Shut Off Valve <i>Class A Screwed 1/2"BSPP</i>
<b>GCA1009</b>	GCA8100 100mm 240v Safety Shut Off Valve <i>Class A Screwed 1/2"BSPP</i>
<b>GCA1010</b>	GCA8125 125mm 240v Safety Shut Off Valve <i>Class A Screwed 1/2"BSPP</i>
<b>GCA1011</b>	GCA8150 150mm 240v Safety Shut Off Valve <i>Class A Screwed 1/2"BSPP</i>
<b>GCA1012</b>	GCA8200C 200mm 240v Safety Shut Off Valve <i>Class A Screwed 1/2"BSPP</i>
<b>GCA1013</b>	GCA8250C 250mm 240v Safety Shut Off Valve <i>Class A Screwed 1/2"BSPP</i>
<b>GCA1014</b>	GCA8300C 300mm 240v Safety Shut Off Valve <i>Class A Screwed 1/2"BSPP</i>

Country of Origin:  
Italy



**GCA**  
Datasheet



**GCA DN15-25**  
Datasheet



**GCA DN15-20**  
Datasheet



**GCA DN32-150**  
Datasheet



**GCA DN200-300**  
Datasheet



## GSW Water Solenoid Valve

The Gold Seal Water Solenoid Valve from DMS is a high-quality, WRAS-approved valve designed for various water applications. This valve is known for its robust construction and reliability, featuring a durable brass body and two-way inlet and outlet ports. It operates in a normally closed (N/C) position and can handle water, hot liquids, and light oils up to 20CST.

### Key Features:

**Durable Construction:** Made with a brass body and stainless steel internal components, ensuring longevity and resistance to corrosion.

**High Performance:** The valve has undergone rigorous testing, successfully completing 200,000 open and close cycles at maximum pressure and temperature.

**WRAS Approved:** Conforms to water regulations with elastomer seals that meet BS6920 standards, ensuring water quality and safety.

**Versatile Applications:** Suitable for various water solutions and can be used in residential, commercial, and industrial settings.

**Electrical Specifications:** Operates at 230V AC and 24Vac, making it compatible with standard electrical systems.



### Standard Features:

<b>Compliance:</b>	WRAS Approved
<b>Connection Type:</b>	1/2" to 2" Screwed
<b>Power Supply:</b>	230Vac, 24Vac and 24Vdc
<b>Body Material:</b>	Brass
<b>Rating:</b>	IP65



**Gold Seal Gas Solenoid Valve Datasheet**

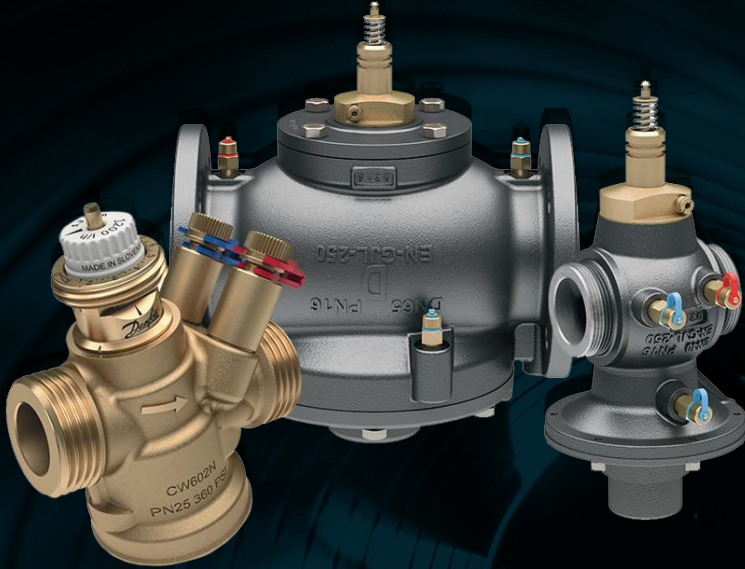
Part No.	Description
<b>S&amp;SGSW13/230AC</b>	1/2" Gold Seal Water Solenoid Valve 230V
<b>S&amp;SGSW13/24AC</b>	1/2" Gold Seal Water Solenoid Valve 24Vac
<b>S&amp;SGSW20/230AC</b>	3/4" Gold Seal Water Solenoid Valve 230V
<b>S&amp;SGSW20/24AC</b>	3/4" Gold Seal Water Solenoid Valve 24Vac
<b>S&amp;SGSW25/230AC</b>	1" Gold Seal Water Solenoid Valve 230V
<b>S&amp;SGSW25/24AC</b>	1" Gold Seal Water Solenoid Valve 230V
<b>S&amp;SGSW32/230AC</b>	1.25" Gold Seal Water Solenoid Valve 24Vac
<b>S&amp;SGSW32/24AC</b>	1.25" Gold Seal Water Solenoid Valve 230V
<b>S&amp;SGSW40/230AC</b>	1.5" Gold Seal Water Solenoid Valve 24Vac
<b>S&amp;SGSW50/230AC</b>	1.5" Gold Seal Water Solenoid Valve 230V

## Need Technical Support or finding the right product?

Our team can assist and advise you with any questions you have and help you source the correct product from individual components through to complete solutions

**Call: 01773 534 555**





## Enhance Heating & Cooling Efficiency with Danfoss AB-QM Valves

The AB-QM Valves are Flow Limiting Valves used on Heating Systems in order to provide efficient control of the flow and temperature. By controlling the flow to the pre-set scale, a low pressure differential is then kept by the internal diaphragm. This ensures that the flow does not exceed the set point and prevents overflow by the pumps. By keeping the flow at a constant efficient rate, the temperature provided to a room will not exceed dramatic tolerances and keep heating bills at a viable level. All of this creates cost savings on the installation and a more efficient system for both the installer and end user.

The AB-QMs are available in connection sizes from 15-50mm with a union connection style and then 65-250mm are all supplied with a PN16 Flanged connection. Each size of AB-QM has predetermined flow ranges that the valves can be set to which is also part of sizing up what Valve to use, not just matching your pipework size.

The AB-QM can be upgraded to work as a Pressure Independent Control Valve, or PICV for short, by adding an actuator. Danfoss offer four different types of actuators to suit the AB-QM range, varying in their operation between On/Off, 0-10 Volt, 4-20ma or floating point and the choice between these will depend on the control strategy. By adding the actuator the AB-QM becomes a full authority valve that can be used to control heating and cooling circuits for Air Handling and Fan Coil Units. Hydronic balance is maintained without allowing overflow as the AB-QM will control the flow. This functionality would normally be controlled by two separate valves so by incorporating it into one device, a further cost saving is made along with the efficiency obtained.

Connection Size: 15-250mm

Connection Type: Flanged Connection, Screwed Connection

Temperature: Heating & Cooling

# Glossary, Approvals, Conversion Charts

Glossary of Metering Terms	<b>110</b>
Metering Approvals	<b>111</b>
Conversion Charts	<b>112</b>
Notes	<b>113-120</b>

# Glossary of Metering Terms

**Accuracy Class**

The tolerance within which a meter must measure the actual consumption.

**Advanced Metering Infrastructure (AMI)**

A system of smart meters, communication networks, and data management systems that enables two-way communication between utilities and customers.

**Analog Meter**

A traditional meter that uses mechanical components to measure consumption and typically displays readings on a dial.

**Automated Meter Reading (AMR)**

Technology that automatically collects consumption, diagnostic, and status data from meters and transfers it to a central database for billing, troubleshooting, and analysis.

**Calibration**

The process of adjusting and testing a meter to ensure it is accurate within specified limits

**Consumption**

The amount of utility (electricity, gas, water) used by a customer over a specific period.

**Current Transformer (CT)**

A device used in conjunction with electric meters to measure high currents by producing a reduced current proportional to the current in the circuit.

**Data Logger**

A device that records data over time, often used in meters to store consumption data.

**Digital Meter**

A meter that uses digital electronics to measure consumption and display readings.

**Electric Meter**

A device that measures the energy used by a building or system on an electrical circuit.

**Gas Meter**

A device that measures the volume of gas used by a building or system.

**Heat Meter**

A device that measures the energy used by a building or system on a heating (and/or cooling) circuit.

**In-Line**

A style of metering that measures the medium travelling through a pipe by sitting in the path of flow.

**Kilowatt-hour (kWh)**

A unit of energy equivalent to one kilowatt (1 kW) of power used for one hour. It is the standard unit of measure for electricity consumption.

**Meter Constant (Multiplier)**

A factor used to convert the meter reading to the actual usage, especially in cases where transformers are used.

**Non-Invasive**

A style of metering that measures the medium travelling through a pipe from the outside.

**Oil Meter**

A device that measures the volume of oil used by a building or system.

**Pulse Output**

A feature of some meters that sends a pulse signal for a defined amount of consumption, used for remote reading or data logging.

**Smart Meter**

An electronic device that records consumption of electric energy in intervals and communicates that information to the utility for monitoring and billing.

**Submetering**

The practice of installing meters downstream from the main utility meter to measure the usage of individual units within a larger premises (e.g., apartments in a building).

**Tariff**

A schedule of rates or charges of a public utility.

**Telemetry**

The process of recording and transmitting the readings of instruments, often through remote means.

**Voltage**

The electric potential difference between two points, which drives the electric current.

**Water Meter**

A device that measures the volume of water used by a building or system.

**Watt (W)**

A unit of power equal to one joule per second, commonly used to measure electrical power.

**Watt-hour (Wh)**

A measure of electrical energy equivalent to the power consumption of one watt for one hour.

# Metering Approvals

## WRAS (Water Regulations Advisory Scheme) Approval

- **Description:** WRAS approval ensures that water-related products comply with UK water supply regulations, ensuring the safety and quality of drinking water.
- **Scope:** UK.
- **Importance:** Prevents contamination, ensures materials and components are safe for use with drinking water, and confirms that products do not waste water.
- **Process:** Products undergo rigorous testing and assessment to ensure compliance with the Water Supply (Water Fittings) Regulations 1999 and Scottish Water Byelaws 2014.

## MID (Measuring Instruments Directive) Approval

- **Description:** The MID, transposed into UK law, regulates the accuracy and reliability of measuring instruments, including electricity, gas, water, and heat meters.
- **Scope:** UK (and EU until the transition period post-Brexit).
- **Importance:** Ensures that meters provide accurate measurements, fostering consumer trust and fair trade practices.
- **Process:** Meters must be assessed and certified by a Notified Body to ensure they meet the requirements of the directive. In the UK, this role is often carried out by the National Measurement and Regulation Office (NMRO).

## BSI (British Standards Institution) Certification

- **Description:** BSI provides certification to British Standards, ensuring products meet specific quality and safety criteria.
- **Scope:** UK.
- **Importance:** Ensures products are safe, reliable, and of high quality.
- **Process:** Involves rigorous testing and quality management assessments by BSI.

## OFGEM (Office of Gas and Electricity Markets) Certification

- **Description:** OFGEM oversees the gas and electricity markets, ensuring meters meet regulatory standards and operate fairly within the market.
- **Scope:** UK.

- **Importance:** Ensures fair competition, protects consumers, and promotes reliable and sustainable energy supply.
- **Process:** OFGEM sets guidelines and standards for meters and may certify them as compliant with regulatory requirements.

## MCERTS (Monitoring Certification Scheme)

- **Description:** Managed by the Environment Agency, MCERTS certifies products used for monitoring emissions to ensure environmental compliance.
- **Scope:** UK.
- **Importance:** Ensures environmental monitoring equipment, including flow meters, meets performance standards.
- **Process:** Products undergo independent performance testing and quality audits.

## Additional Considerations for Metering Approvals in the UK

- **Accuracy Class:** Meters must meet specific accuracy classes to ensure precise measurements, as defined by the relevant standards and directives.
- **Calibration and Testing:** Regular calibration and testing by accredited laboratories ensure ongoing compliance with performance standards.
- **Data Security and Privacy:** Smart meters and AMI systems must comply with data protection regulations to safeguard consumer information.
- **Environmental Impact:** Products must also meet environmental regulations to minimise their impact, including considerations for materials and energy efficiency.

## Importance of UK-Specific Approvals

- **Consumer Protection:** Ensures consumers receive accurate billing and reliable service.
- **Compliance with National Regulations:** Meets UK-specific legal and regulatory requirements.
- **Market Access:** Enables products to be sold and used within the UK market.
- **Safety and Quality Assurance:** Maintains high standards for product safety and quality, fostering trust and reliability.

Understanding and obtaining the relevant approvals is essential for manufacturers and suppliers to ensure their metering products are compliant, safe, and reliable for use in the UK.

### Distances

Decimal and Metric Equivalents of Fractions of an inch		
in	mm	
1/8	= 0.125	3.18
1/4	= 0.25	6.35
3/8	= 0.375	9.52
1/2	= 0.5	12.7
5/8	= 0.625	15.88
3/4	= 0.75	19.05
7/8	= 0.875	22.23
1	= 1	25.4

Millimetres to Inches	
mm	in
25.4	1
50.8	2
76.2	3
101.6	4
127	5
152.4	6
203.2	8
254	10
304.8	12
406.4	16
457.2	18
508.0	20
558.8	22
609.6	24
711.2	28
812.8	32
914.4	36
1016.0	40
1219.2	48



### Temperatures

Celsius To Fahrenheit Conversion Chart			
°C	°F	°C	°F
-15	5	70	158
-10	14	75	167
-5	23	80	176
0	32	85	185
5	41	90	194
10	50	95	203
15	59	100	212
20	68	105	221
25	77	110	230
30	86	115	239
35	95	120	248
40	104	125	257
45	113	130	266
50	122	135	275
55	131	140	284
60	140	145	293
65	149	150	302

Formula for converting Celsius to Fahrenheit:  
 $^{\circ}\text{F} = ((^{\circ}\text{C}) * 9/5) + 32$

Formula for converting Fahrenheit to Celsius:  
 $^{\circ}\text{C} = ((^{\circ}\text{F}) - 32) * 5/9$

### Volume

Volume From Litres to m3	
Litres (L)	Cubic Metres (m <sup>3</sup> )
1 L	0.001 m <sup>3</sup>
10 L	0.01 m <sup>3</sup>
100 L	0.1 m <sup>3</sup>
500 L	0.5 m <sup>3</sup>
1,000 L	1 m <sup>3</sup>
5,000 L	5 m <sup>3</sup>
10,000 L	10 m <sup>3</sup>
50,000 L	50 m <sup>3</sup>
100,000 L	100 m <sup>3</sup>
500,000 L	500 m <sup>3</sup>
1,000,000 L	1,000 m <sup>3</sup>

### Volumetric Flow Rates

Litre Per Second (L/sec)	Litre Per Minute (L/min)	Cubic Metre per Hour (m <sup>3</sup> /hr)
1	60	3.6
1.5	90	5.4
2	120	7.2
2.5	150	9
3	180	10.8
3.5	210	12.6
4	240	14.4
4.5	270	16.2
5	300	18
6	360	21.6
7	420	25.2
8	480	28.8
9	540	32.4
10	600	36
12	720	43.2
14	840	50.4
16	960	57.6
18	1080	64.8
20	1200	72
30	1800	108
40	2400	144
50	3000	180
100	6000	360
150	9000	540
200	12000	720
250	15000	900

## Training tailored to you

Join us for bespoke metering, controls and data collecting training

Book online at [dmsltd.com/training](http://dmsltd.com/training) or [dmsltd.com/cpd-training](http://dmsltd.com/cpd-training)

### Energy

Units of Energy: Wh/kWh/MWh		
Watt-hours (Wh)	Kilowatt-hours (kWh)	Megawatt-hours (MWh)
1	0.001	0.000001
10	0.01	0.00001
100	0.1	0.0001
1,000	1	0.001
10,000	10	0.01
100,000	100	0.1
1,000,000	1,000	1
10,000,000	10,000	10
100,000,000	100,000	100
1,000,000,000	1,000,000	1,000























# DMS METERING SOLUTIONS

X-Cel House, Chrysalis Way,  
Langley Bridge, Eastwood,  
Nottinghamshire NG16 3RY

**01773 534555**  
**meters@dmsltd.com**  
**dmsltd.com**

Registered in England & Wales 3978520