



JAK MODULES

THE BULL UNDER THE STEEL FRAMES



JAK MODULES

QUBE

What makes our houses special:

All houses are suitable for year-round living, fully equipped and turnkey:

We meet the German KFW40 standard.

We are the manufacturer. You choose how you want your house to look based on our catalogues.

The entire construction is made in closed section steel technology, which guarantees the stability of the construction.

The insulation of the house consists of two types of PUR foam (closed and open cell), which allow us to achieve a thermal insulation value of $\lambda 0.15$, which is unique on the market, thus reducing the costs of heating and cooling the house to a minimum.

The kitchen is made of high quality materials to meet your expectations. We use white goods from BOSCH

High quality stone tiles are used in the bathroom. GROHE fittings and Villeroy-Boch ceramics.

For heating, we use air-conditioning units that work on the principle of a 3.5 KW heat pump with a heating function down to -25 degrees, with external radiators, which according to our planning is the most economical solution for the customer. In addition, we install infrared heating panels or underfloor heating in the rooms.

We provide very long guarantees on our products.

The production time is only 8 weeks.

TECHNICAL DESIGNATION



Length - 9.00 m

Width - 3.00 m

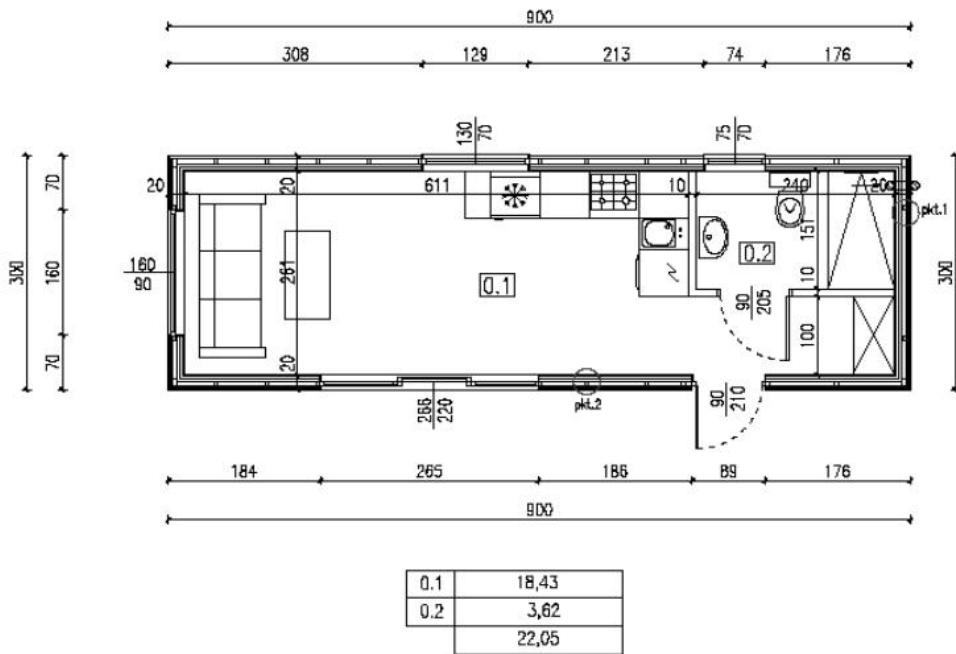
Building area - 24.00 m²

List of rooms:

0.1 Room with kitchenette - 19,43m²

0.2 - Bathroom - 3.62m²





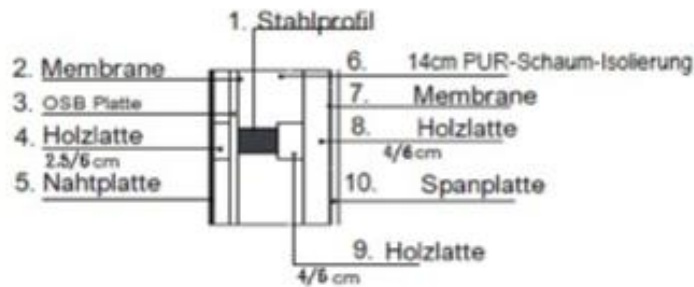
Design

Load-bearing structure space-welded steel frame with steel profiles 100x60x5 mm, between the frames steel elements with profiles 60x40x4 mm.

Built-up outer walls according to the following layers:

- 0.7 mm thick folded sheet (or decoration with impregnated board).
- wood lath 2.5 x 6 cm
- OSB 12 mm thick
- steel profile 60x40x4 mm
- Wooden batten 4 x 6 cm (vertical installation)
- Wall insulation of closed-cell PUR foam, 4 cm thick.
- Wall insulation with 8 cm thick open-cell PUR foam.
- Wooden batten 4 x 6 cm (horizontal assembly every approx. 60 cm)
- 1.2 cm thick ECO chipboard

Wandquerschnitt:



Roof:

Pent roof with a pitch of 20 degrees, covered with 0.7 mm thick sheets
Thermal insulation: PUR 4cm PURTECO PSC 35 System PS closed cell
PUR 8cm EMBEPUR PRO 100FS open cell PUR open cell foamed steel
girder

Walls

- 12 cm thick PUR foam $U= 0.15 \text{ W/m}^2/\text{K}$
- Roof 12 cm thick PUR foam $U= 0.15 \text{ W/m}^2/\text{K}$
- Floor - 12 cm thick PUR foam $U= 0.15 \text{ W/m}^2/\text{K}$

Window and door joinery

Window joinery anthracite-coloured outside, white inside made of PVC chamber profiles, glazing with insulating glass 3-pane. Steel exterior doors, PUR-foamed, anthracite stained, facade:

- Walls, roof (seam plates) - RAL 7016- Wood decoration - natural wood impregnated with colourless impregnating agent
- Window and door joinery - RAL 7016 Pipes $\text{Ø}100$ and downpipes $\text{Ø}80$ of coated sheet steel. Covers made of 0.55 mm thick coated sheet steel.

Installation material:

- water installation made of PE pipes
- hot water installation made of PE pipes,
- electric hot water tank with a capacity of 50 litres
- sanitary waste water installation made of PVC pipes
- electrical installation made of copper cables
- electrical heating (bath ladder heater 800 W)
- heating/cooling air conditioner 3.5 kW
- bath ventilation duct Ø100 mm
- sockets type SCHNEIDER schuko
- 3 external contacts
- electric water connection heating (antifreeze)

Foundation of the building:

The building is founded on 24 x 38 x 12 concrete blocks or a 20 cm thick reinforced concrete slab.

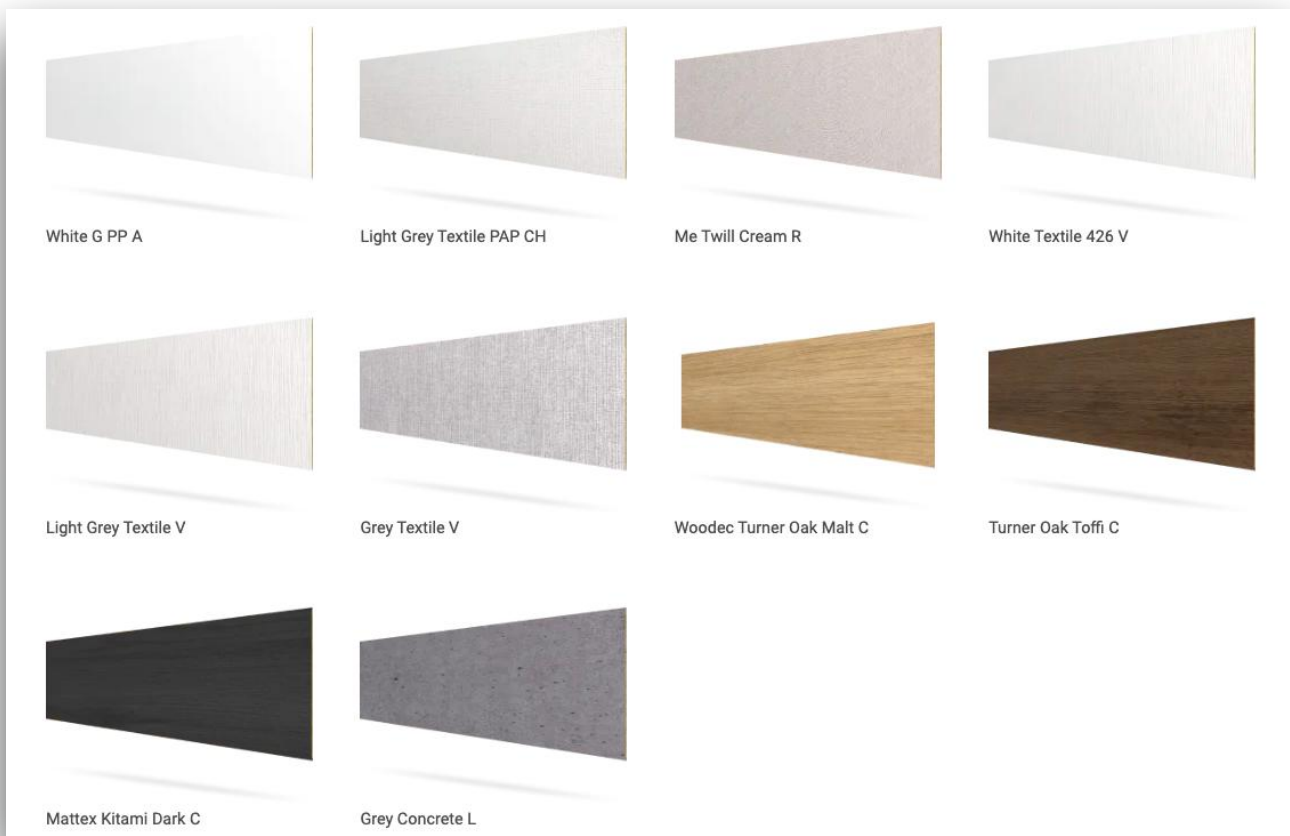
Materials used by JAK MODULES for interior fittings

Walls



WALL PANELS FOR INTERIOR DESIGN

Simplicity and aesthetics
Interior Design wall panels are the ideal product for both walls and attics. Our panels are a high quality product that is functional, easy to install and has both a structural and finishing function.



Flooring

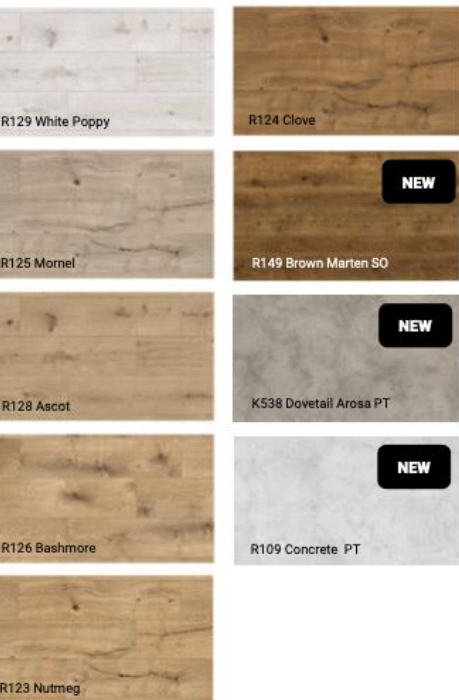
We use Rocko brand vinyl panels

Rocko brand vinyl panels in our modular homes. This is SPC's range of vinyl flooring, which boasts beautiful design and exceptional performance. They are manufactured using a digital printing process and give the

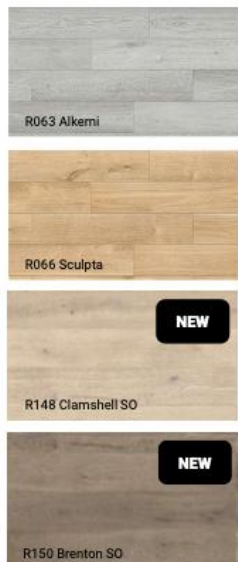
the look of natural wood and stone down to the smallest detail. And, as with natural floors, the design varies within each décor, allowing you to install up to 14 m² without repeating individual panels. Rocko vinyl planks are extremely dimensionally stable and are therefore and are therefore suitable for installation in sunny and high-traffic areas. Its water resistance and high resistance to damage and scratches make it ideal for kitchens and bathrooms.



Format: 1.210 x 295 mm



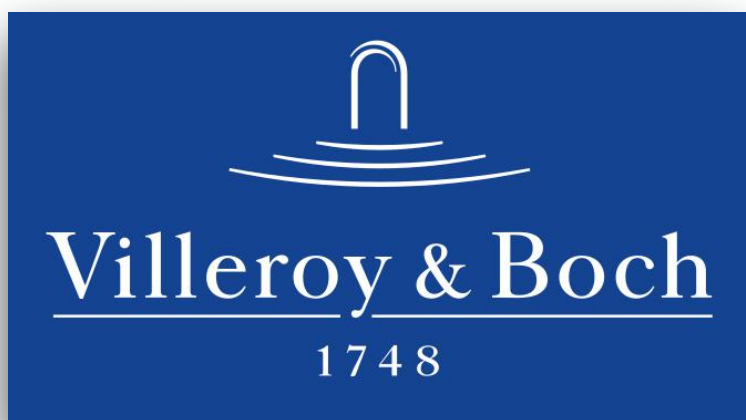
Format: 1.210 x 234 mm



Format: 1.210 x 192 mm



Bathroom



Sanitary ceramics

Since 1748, the Villeroy & Boch brand has been synonymous with high quality and beauty, with advanced ideas and techniques in ceramics. It has always been Villeroy & Boch's ambition to create a home that invites you to celebrate life's moments.

Sanitary fittings

TOP PERFORMANCE THAT GOES BEYOND DESIGN

Enjoy stunning, elegant design and reliable functionality with GROHE taps. Unique design and innovative technologies allow you to discover a whole new level of comfort every day.

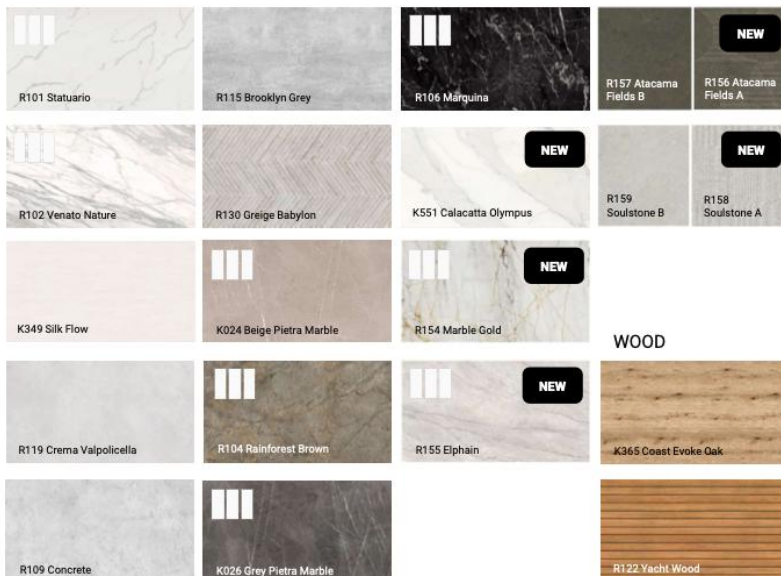


Wall



The waterproof, large-format wall tiles from Rocko Tiles are a real revolution among cladding and decorative materials. Decorative materials. Rocko Tiles are available in a range of fashionable designs, that perfectly imitate wood, concrete or marble and can be used in living rooms, kitchens and bathrooms. The lightweight and thin tiles replace paint, wallpaper, stoneware or ceramic tiles on your wall. Rocko tiles are absolutely waterproof, hygienic and dimensionally stable. They are the ideal material to furnish your dream bathroom.

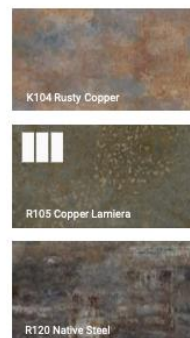
STONE



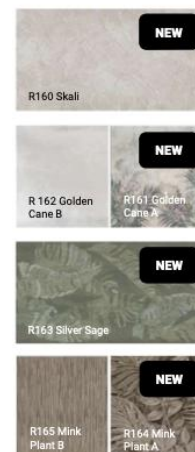
WOOD



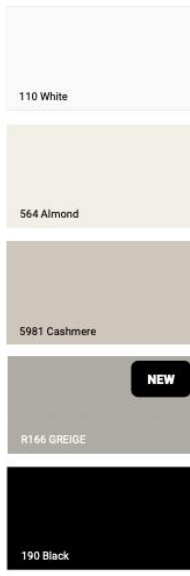
METAL



ORGANIC



COLOR



Kitchen



Equipment offers us

- Cooker bonnet
- Built-in oven
- Built-in dishwashe



- Built-in fridge-freezer

Additional options



Heating mat 220W/m² integrated into the floor of the house, controlled via WI FI

Additional modern and very economical heating system





Pleated blinds for interior windows

Dual air conditioning



Electric roller shutter set





JAK MODULES

THE BULL UNDER THE STEEL FRAMES