

# **BEDEC**

THE PAINT COMPANY



Product Range

# BEDEC Tomorrow's Paint Today

**BEDEC**  
THE PAINT COMPANY



# The BEDEC collection of Water-Based paints.

Breathe easy and protect the planet with our eco-friendly, low-VOC\* paints. All our products are microporous and non yellowing.

\* Volatile Organic Compounds



<b>Our Story</b>	4
<b>MSP: Multi Surface Paint</b>	6
<b>Barn Paint</b>	8
<b>Aqua Advanced</b>	10
<b>SDL: Spray Day Light</b>	12
<b>All Prime</b>	14
<b>Interior Flex</b>	16
<b>Extra Flex</b>	18
<b>Super Flex</b>	20
<b>Acrylic Floor Paint</b>	22
<b>Multi Surface Varnish</b>	23
<b>Aqua Advanced Primer Undercoat</b>	24
<b>Acrylic Primer Undercoat</b>	25
<b>Stain Block</b>	26
<b>Metal Primer</b>	27
<b>Location Selector</b>	28
<b>Silicone Profilers</b>	29
<b>Frequently Asked Questions</b>	30
<b>Gallery</b>	32
<b>Product Guide</b>	34



**BEDEC**  
THE PAINT COMPANY

# Perfecting Water-Based Paint for over 50 Years

BEDEC The Paint Company was created in the early 1970's by two experienced paint chemists, Brian Higgins and David Horn who were driven by a passion to create superior quality paint products.







*Early days*



Their story is one of gathering together a knowledgeable team committed to enhancing customer experiences, whilst gaining a reputation as **innovators in water based technology**.

The company grew mainly through word of mouth recommendation, promoting their specialist problem solving products.

BEDEC remain a British owned family business committed to environmentally friendly and sustainable products fit for the modern world.

BEDEC products  
are often  
imitated **but**  
**never equalled**

 **MADE IN  
BRITAIN**



Weathering  
tests on our  
products





**BEDEC**  
THE PAINT COMPANY



# MSP

## (Multi Surface Paint)

The iconic and original Multi Surface, water based, **interior**, **exterior** self-priming and self-undercoating paint that takes the thinking out of painting.

Developed in the early 1990's as a water based surface coating that can be applied to almost any surface, MSP was a forerunner to many of today's all purpose paints and changed coating specifications forever.

With minimal marketing and gradual word of mouth, MSP has established itself as a product of quality and reliability and remains the go to Multi Surface Paint for DIY, Contract, Commercial, Industrial and Trade.

MSP is manufactured at our UK factory in Essex, where continual research and development ensure this product remains unequalled.



Beach Huts: **MSP Gloss**

# Why choose this paint?



## Properties

Application	Brush, Roller, Spray
Coverage	12-14m <sup>2</sup> /Ltr*
Touch Dry	<2 Hours**
Recoatable	4 Hours**
Finishes	Gloss, Satin, Matt, Metallics
Sizes	250ml, 750ml, 2.5L, 5L, 20L

## Available Colours

See BEDEC Colour Card

Other colours available to order

\* Depending on surface texture and method of application

\*\* Based on a temperature of 18°C and relative humidity of 65%

**NOTE: On porous surfaces we recommend a first coat diluted by 30% with clean water**

**NOTE: Smooth surfaces should be lightly abraded to provide a key**

**NOTE: Not for use on high traffic areas such as worktops and handrails**

## Perfect for use on

- ✓ Wood<sup>1</sup>
- ✓ Plastic/UPVC
- ✓ Aluminium
- ✓ Galvanized Steel/Zinc
- ✓ Bricks<sup>3</sup>
- ✓ Plaster
- ✓ Iron/Steel<sup>2</sup>
- ✓ MDF
- ✓ Melamine
- ✓ Previously painted surfaces
- ✓ Cladding<sup>5</sup>
- ✓ Powder Coating
- ✓ Acoustic Tiles
- ✓ Drywall
- ✓ Chipboard
- ✓ Masonry/Render
- ✓ Asbestos
- ✓ Lead
- ✓ Terracotta
- ✓ Stucco
- ✓ Slates
- ✓ Fibreglass (GRP)
- ✓ Copper
- ✓ Concrete
- ✓ Tarmac
- ✓ Felt
- ✓ Brass
- ✓ Marble
- ✓ Cement Fibre Board
- ✓ Tiles Ceramic<sup>4</sup>
- ✓ Glass<sup>A</sup>
- ✓ Varnish/Woodstain
- ✓ Can be painted over Weathered Bitumen, Creosote, and Tar Varnish
- ✓ Fascia and Soffits
- ✓ OSB - Chipboard with Glue<sup>6</sup>

<sup>A</sup> Paint internal surface only

1. For woods liable to staining we suggest priming with BEDEC ALL PRIME or BEDEC STAIN BLOCK

2. Anti-corrosive primer such as BEDEC ALL PRIME or BEDEC METAL PRIMER is needed for bare ferrous metals

3. Not on Fletton bricks, stocks, or Engineering Bricks

4. Not recommended for use in shower cubicles or areas under constant water contact

5. Including Wood, Metal, Plastic and composite Cladding

6. For light colours Prime with ALL PRIME as the glue may stain through



**BEDEC**  
THE PAINT COMPANY



# Barn Paint

Barn Paint is a tough and highly durable water based acrylic paint suited to the protection of exterior fences, woodwork and buildings.

**For excellent resistance against:**

- ✓ **Cracking blistering and flaking**
- ✓ **Rain and severe weather**
- ✓ **Rot and Algal buildup**
- ✓ **Sunlight (UV)**

Barn Paint is ideally suited to the protection of exterior buildings such as barns, outbuildings, sheds, silos, windmills, and factory units (corrugated and metal box cladding).

This acrylic system is a tough, durable microporous protective coating with excellent colour retention. It will flex with the substrate and exhibits reduced flaking and blistering. Two or three coats can be applied quickly within one day, especially during the summer months.

This product was initially formulated for restoration work on Essex barns, but local farmers found it to be an excellent replacement for Tar Varnish and Bitumen in protecting outbuildings.

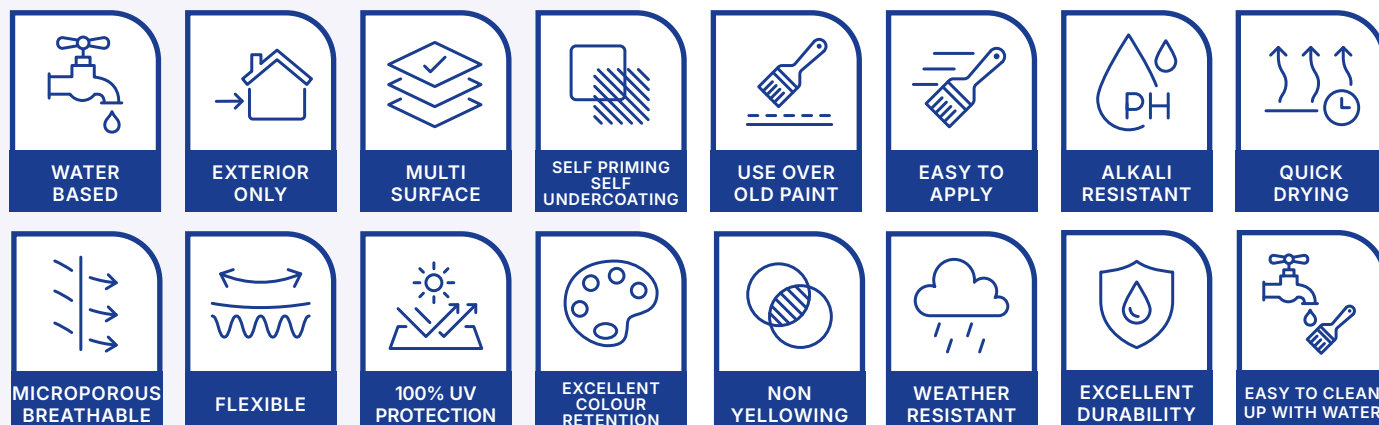
**FOR: WOOD, GALVANISED, PLASTIC, CONCRETE, BRICKS & CLADDING.**



Barn Paint Black Semi Gloss



# Why choose this paint?



## Properties

Application	Brush, Roller, Spray
Coverage	13-15m <sup>2</sup> /Ltr*
Touch Dry	<2 Hours**
Recoatable	4 Hours**
Finishes	Semi Gloss, Satin, Matt
Sizes	2.5L, 5L, 20L

## Available Colours

See BEDEC Colour Card

Other colours available to order

## Perfect for use on

- ✓ Exterior Wood<sup>1</sup>
- ✓ Cladding<sup>4</sup>
- ✓ Can be painted over Weathered Bitumen, Creosote and Tar Varnish
- ✓ Plastic / UPVC
- ✓ Iron/Steel<sup>2</sup>
- ✓ Masonry/Render
- ✓ Aluminium
- ✓ Asbestos
- ✓ Galvanized Steel / Zinc
- ✓ Concrete
- ✓ Fibreglass (GRP)
- ✓ Composite
- ✓ Copper
- ✓ Bricks<sup>3</sup>
- ✓ Stone
- ✓ Terracotta
- ✓ Brass
- ✓ Previously painted surfaces
- ✓ Powder Coating
- ✓ Lead
- ✓ Stucco
- ✓ Slates
- ✓ Tarmac
- ✓ Felt
- ✓ Cement Fibre Board
- ✓ Varnish/Wood Stain
- ✓ Fascia and Soffits
- ✓ OSB - Chipboard with Glue<sup>5</sup>

\* Depending on surface texture and method of application

\*\* Based on a temperature of 18°C and relative humidity of 65%

**NOTE: On porous surfaces we recommend a first coat diluted by 30% with clean water**

**NOTE: Treated timber should be left to weather for 6 months before painting**

**NOTE: Smooth surfaces should be lightly abraded to provide a key**

**NOTE: Not recommended for substrates which have had water-repellent preservative treatments applied**

1. For woods liable to staining we suggest priming with BEDEC ALL PRIME or BEDEC STAIN BLOCK
2. Anti-corrosive primer such as BEDEC ALL PRIME or BEDEC METAL PRIMER is needed for bare ferrous metals
3. Not on Fletton bricks, stocks, or Engineering Bricks
4. Including Wood, Metal, Plastic and composite Cladding
5. For light colours Prime with ALL PRIME as the glue may stain through

**BEDEC**  
THE PAINT COMPANY



# Aqua Advanced

The Aqua Advanced range is a family of quick drying, water based products formulated for the professional decorator in mind.

Developed as a high quality trim paint to rival traditional oil based systems, this internal and external paint exhibits excellent flow out, coverage, and levelling. The Acrylic polyurethane enamel enables these paints to dry to a tough finish, which offers excellent block resistance and durability. Aqua Advanced is non yellowing and can be painted on almost any surface to provide a long lasting surface coating.

Designed as a three coat system, we recommend using Aqua Advanced Primer Undercoat, followed by two top coats of Aqua Advanced Gloss, Satin, Eggshell, or Matt.



Door: Aqua Advanced Black Satin Trim: Aqua Advanced White Gloss



# Why choose this paint?



## Properties

Application	Brush, Roller, Spray
Coverage	13-15m <sup>2</sup> /Ltr*
Touch Dry	<2 Hours**
Recoatable	4 Hours**
Finishes	Gloss, Satin, Eggshell, Matt
Sizes	1L, 2.5L, 5L

## Available Colours

**Black**

**White**

Other colours available to order

## Perfect for use on

- ✓ Wood<sup>1</sup>
- ✓ Plastic
- ✓ UPVC
- ✓ Metal<sup>2</sup>

Trim areas such as:

- ✓ Windows
- ✓ Skirting
- ✓ Architrave
- ✓ Doors
- ✓ Fascia and Soffits
- ✓ All types of joinery



\* Depending on surface texture and method of application

\*\* Based on a temperature of 18°C and relative humidity of 65%

**NOTE: On porous surfaces we recommend a first coat diluted by 30% with clean water**

**NOTE: On existing painted or shiny surfaces rub down with abrasive paper**

1. For woods liable to staining we suggest priming with BEDEC ALL PRIME or BEDEC STAIN BLOCK

2. Anti-corrosive primer such as BEDEC ALL PRIME or BEDEC METAL PRIMER is needed for bare ferrous metals

**BEDEC**  
THE PAINT COMPANY

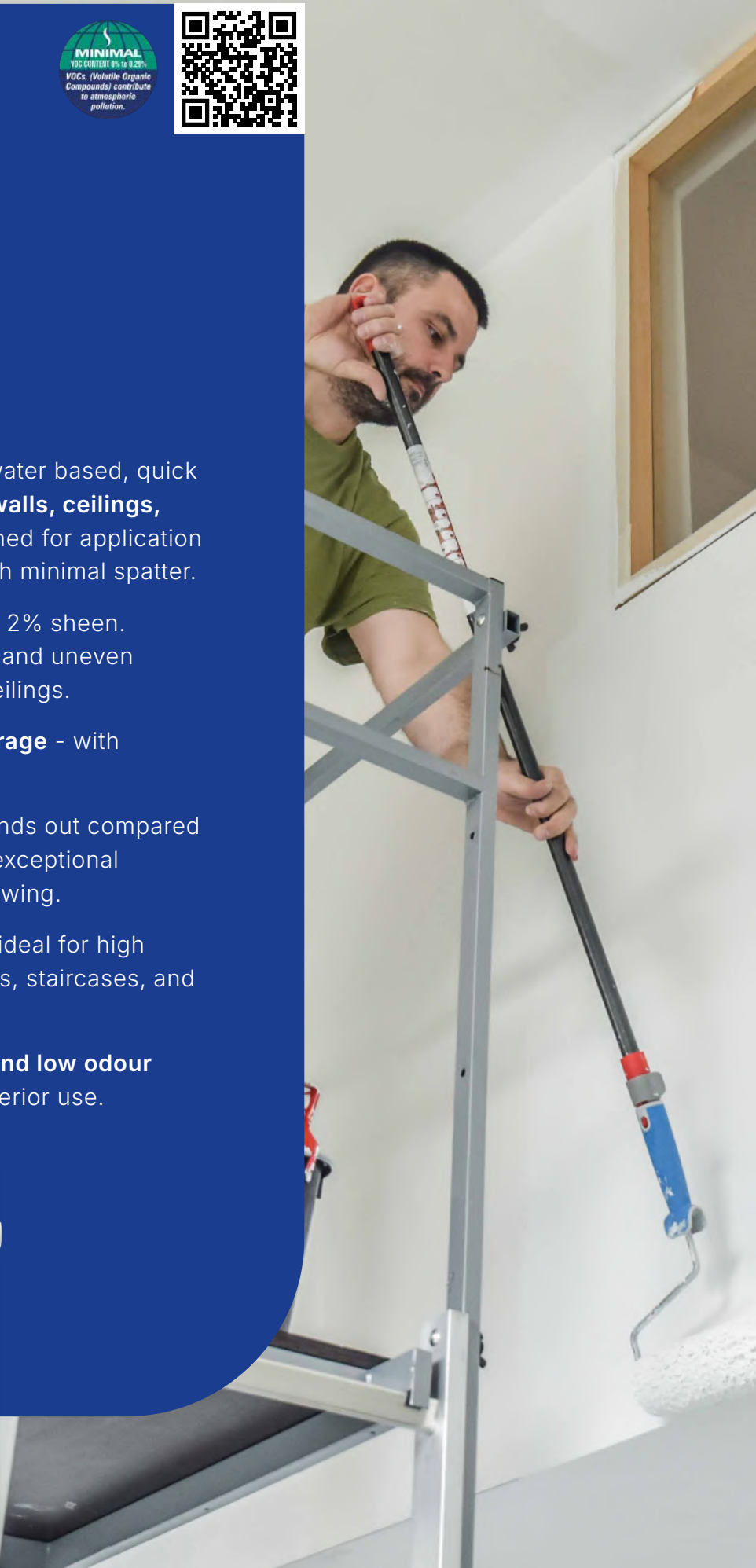
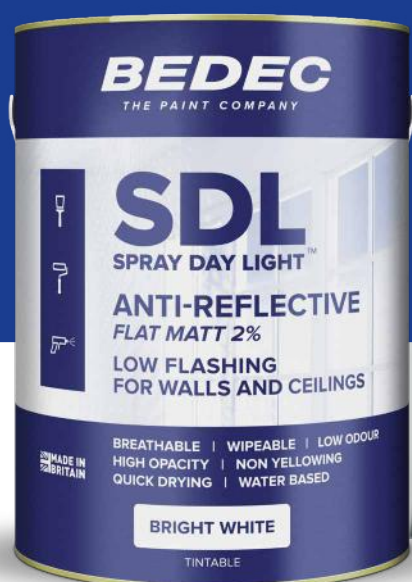


# SDL

- ✓ **Anti-reflective**
- ✓ **Flat Matt 2%**

SDL (Spray Day Light) is a water based, quick drying, flat matt for use on **walls, ceilings, plaster, and drywall**. Designed for application by spray, brush, or roller with minimal spatter.

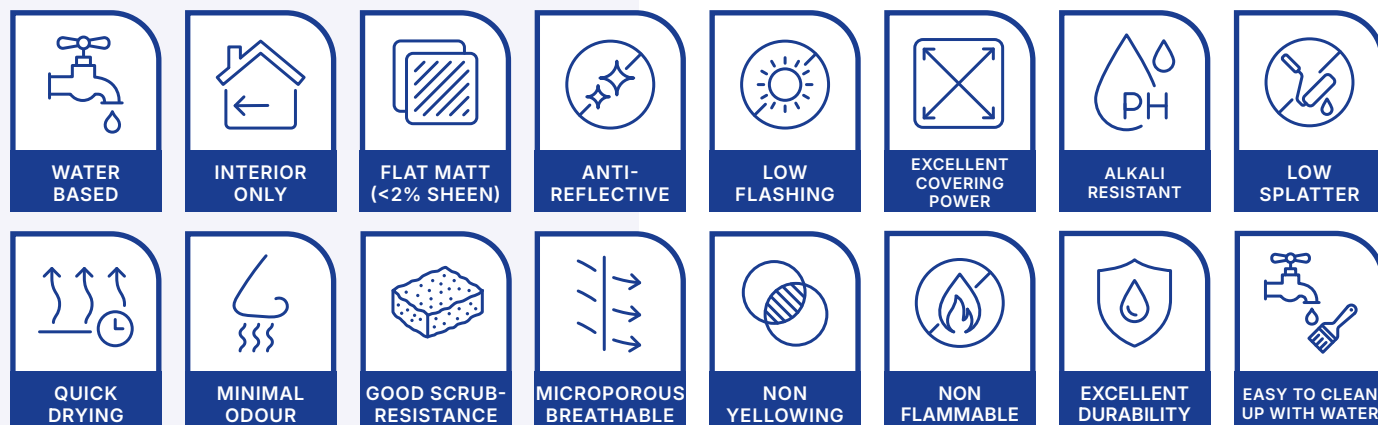
- ✓ **Low flashing** - less than 2% sheen. Disguises imperfections and uneven surfaces on walls and ceilings.
- ✓ **Delivers excellent coverage** - with minimal paint needed.
- ✓ **Bright white finish** - stands out compared to other brands with its exceptional whiteness and non-yellowing.
- ✓ **Easy to wipe clean** and ideal for high traffic areas such as halls, staircases, and corridors.
- ✓ **Minimal levels of VOC and low odour** make SDL perfect for interior use.



Walls and Ceiling: **SDL White Matt**



# Why choose this paint?



## Properties

Application	Brush, Roller, Spray
Coverage	10m <sup>2</sup> /Ltr*
Touch Dry	2 Hours**
Recoatable	4 Hours**
Finishes	Matt
Sizes	5L

## Available Colours

**Bright White**

Other colours available to order

\* Depending on surface texture and method of application

\*\* At a temperature of 18°C and relative humidity of 65%

**NOTE: On Porous surfaces we recommend a first coat diluted by 30% with clean water**

## Perfect for use on

✓ Walls

✓ Ceilings



**BEDEC**  
THE PAINT COMPANY



# All Prime

All Prime, is an all surface, all purpose, quick drying primer with a wide range of uses.

This water based product is formulated to act as a stain blocker, metal primer and rust inhibitor and is ideal for priming most surfaces including metal and wood with knots, sap and tannin stains.

All Prime is a:

- ✓ Wood Primer
- ✓ Stain Blocker
- ✓ Metal Primer
- ✓ Rust Inhibitor



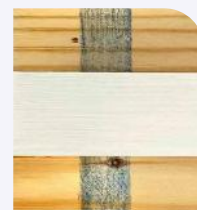
## Stain blocking guide



Water Stain



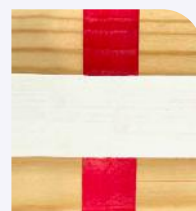
Smoke Fire Damage



Crayon



Permanent Ink



Lipstick



Rust



Sap Knots



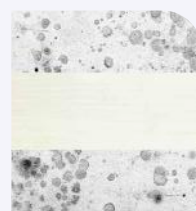
Varnish



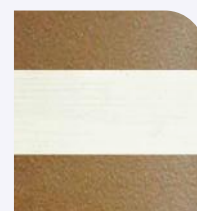
Bitumen



Grease



Mildew Mould



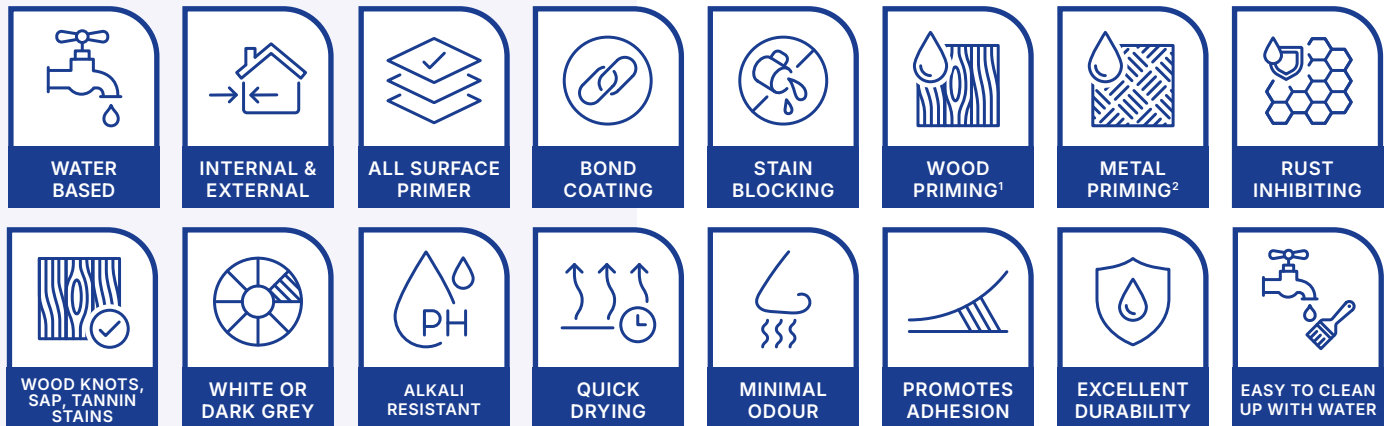
Nicotine/  
Tobacco



Asphalt



# Why choose this paint?



## Properties

Application	Brush, Roller, Spray
Coverage	10m <sup>2</sup> /Ltr*
Touch Dry	<2 Hours**
Recoatable	4 Hours**
Sizes	750ml, 2.5L, 5L

## Available Colours

Dark Grey

White

Other colours available to order

## Perfect for priming

- |                       |                       |                        |
|-----------------------|-----------------------|------------------------|
| ✓ Wood <sup>1</sup>   | ✓ Ceramics            | ✓ Varnish/ Woodstain   |
| ✓ Metals <sup>2</sup> | ✓ Steel               |                        |
| ✓ Ceilings            | ✓ MDF                 | ✓ Panelling/ Laminates |
| ✓ Doors               | ✓ Fibreglass          | ✓ Acoustic Tiles       |
| ✓ Trim                | ✓ GRP                 |                        |
| ✓ Fascia & Soffits    | ✓ Aluminium           | ✓ Lead                 |
|                       | ✓ Wall Tiles          | ✓ UPVC                 |
| ✓ Railings            | ✓ Gloss Paint         | ✓ Copper               |
| ✓ Drywall             |                       | ✓ Glass                |
| ✓ Plaster             | ✓ Powder Coating      | ✓ Stucco               |
| ✓ Concrete            | ✓ Iron (Raw and Cast) | ✓ Asbestos             |
| ✓ MDF                 |                       | ✓ Plastic              |
| ✓ Brick               |                       |                        |



1. Ideal for HARD and SOFT WOOD
2. Can be applied to all metals

\* Depending on surface texture and method of application

\*\* At a temperature of 18°C and relative humidity of 65%

NOTE: On severe staining additional coats may be required

NOTE: On porous surfaces we recommend a first coat diluted by 30% with clean water

NOTE: Smooth surfaces should be lightly abraded to provide a key

**BEDEC**  
THE PAINT COMPANY



# Interior-Flex

Interior-Flex is an **elastomeric** smooth low sheen emulsion paint formulated to coat interior ceilings and walls.

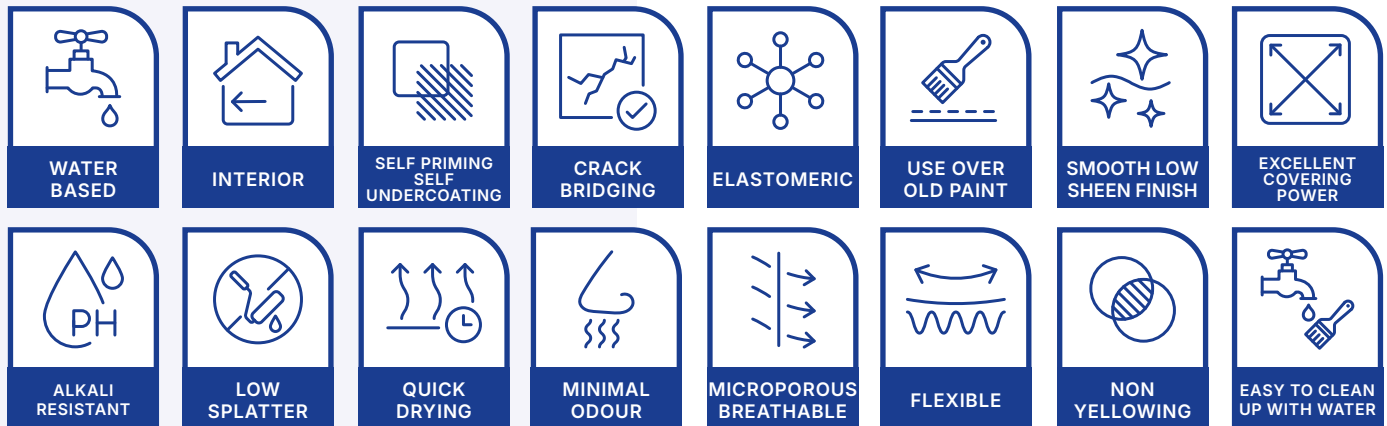
Interior-Flex is a unique product designed to bridge hairline cracks and flex with the substrate where movement causes cracking with conventional matt emulsion.







Walls and Ceiling: Interior Flex White Matt



# Why choose this paint?



## Properties

	<b>Application</b>	Brush, Roller, Spray
	<b>Coverage</b>	9-11m <sup>2</sup> /Ltr*
	<b>Touch Dry</b>	<2 Hours**
	<b>Recoatable</b>	4 Hours**
	<b>Finishes</b>	Smooth Low Sheen
	<b>Sizes</b>	2.5L, 5L

## Available Colours

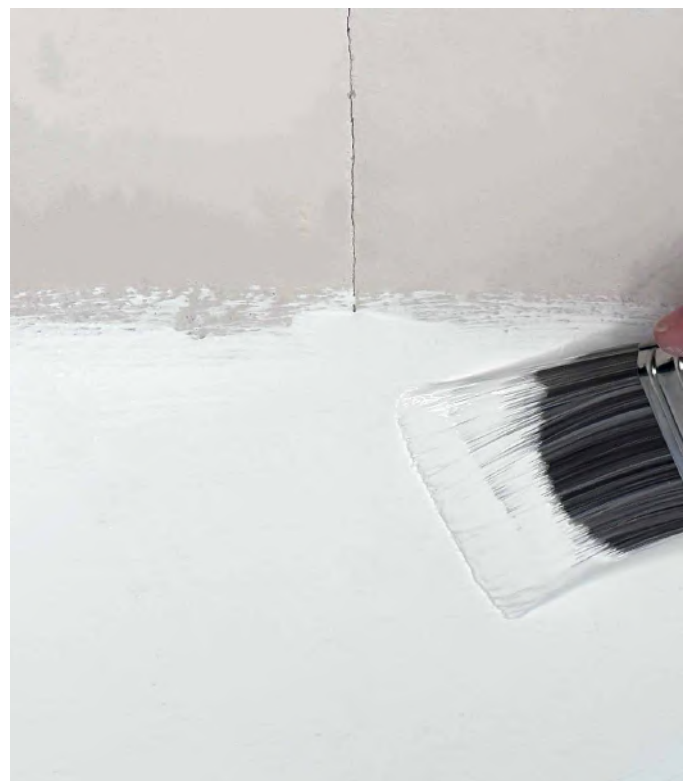
Brilliant White

Magnolia

Other colours available to order

## Perfect for use on

- ✓ Walls
- ✓ Ceilings
- ✓ Drywall
- ✓ Plaster
- ✓ MDF
- ✓ Chipboard
- ✓ Asbestos
- ✓ Painted surfaces

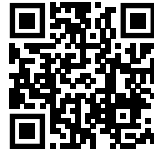


\* Depending on surface texture and method of application

\*\* At a temperature of 18°C and relative humidity of 65%

NOTE: On Porous surfaces we recommend a first coat diluted by 30% with clean water

**BEDEC**  
THE PAINT COMPANY



# Extra-Flex

## Masonry Paint

Extra-Flex is a premium quality, smooth, **elastomeric** masonry paint which provides a professional finish with outstanding protection.

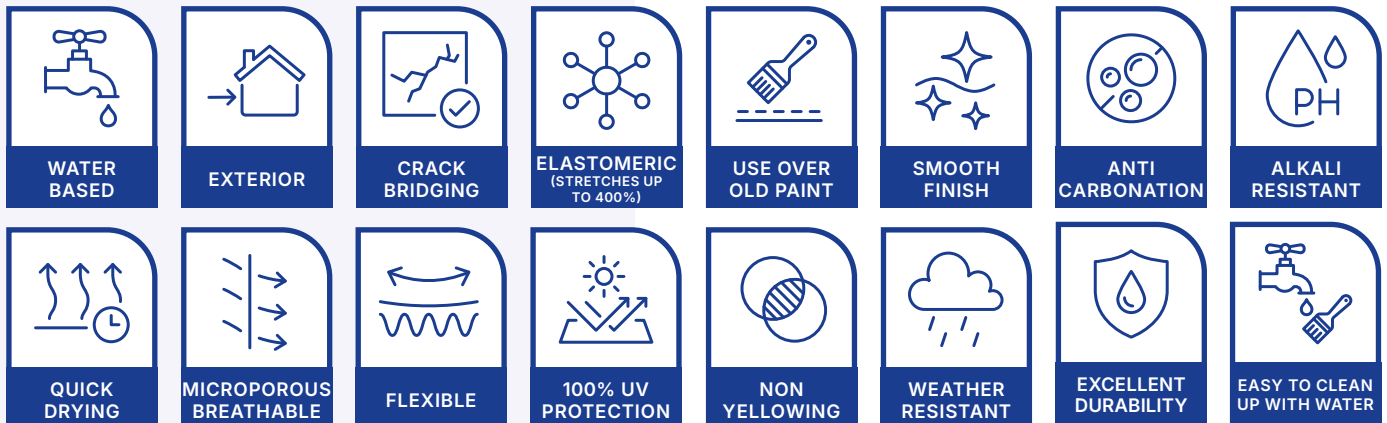
This modified acrylic blend is a flexible microporous protective coating that will fill and bridge hair line cracks and flex with the building where movement causes cracking in conventional masonry paint.

Extra-Flex is certificated as an anti-carbonation coating and can also be applied to previously painted surfaces after suitable preparation.



Walls: Extra Flex White

# Why choose this paint?



## Properties

Application	Brush, Roller, Spray
Coverage	9-11m <sup>2</sup> /Ltr*
Touch Dry	<2 Hours**
Recoatable	4 Hours**
Finishes	Smooth Low Sheen
Sizes	5L

## Available Colours

See BEDEC Colour Card

Other colours available to order

\* Depending on surface texture and method of application

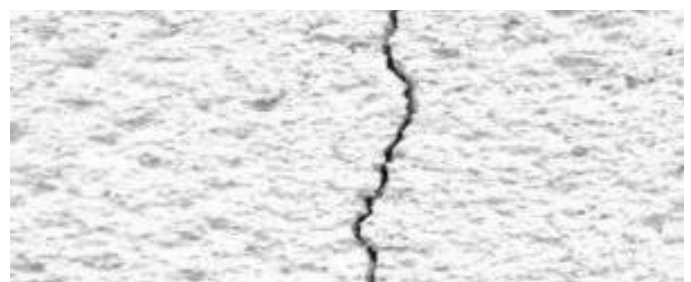
\*\* At a temperature of 18°C and relative humidity of 65%

**NOTE: On Porous surfaces we recommend a first coat diluted by 30% with clean water**

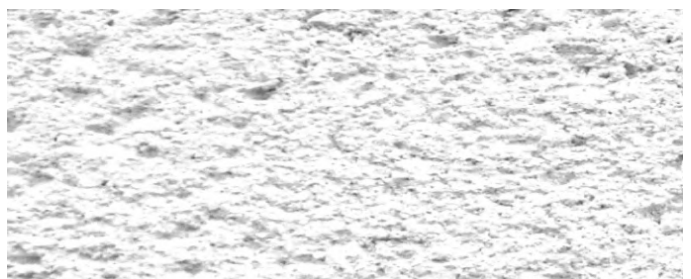
**NOTE: A stabilizer solution is not required**

## Perfect for use on

- ✓ Exterior Masonry
- ✓ Roughcast
- ✓ Pebble-dash
- ✓ Brickwork<sup>1</sup>
- ✓ Stucco
- ✓ Cement
- ✓ Concrete render



Before



After

<sup>1</sup> Not on Fletton, stocks, or Engineering Bricks



**BEDEC**  
THE PAINT COMPANY



# Super-Flex

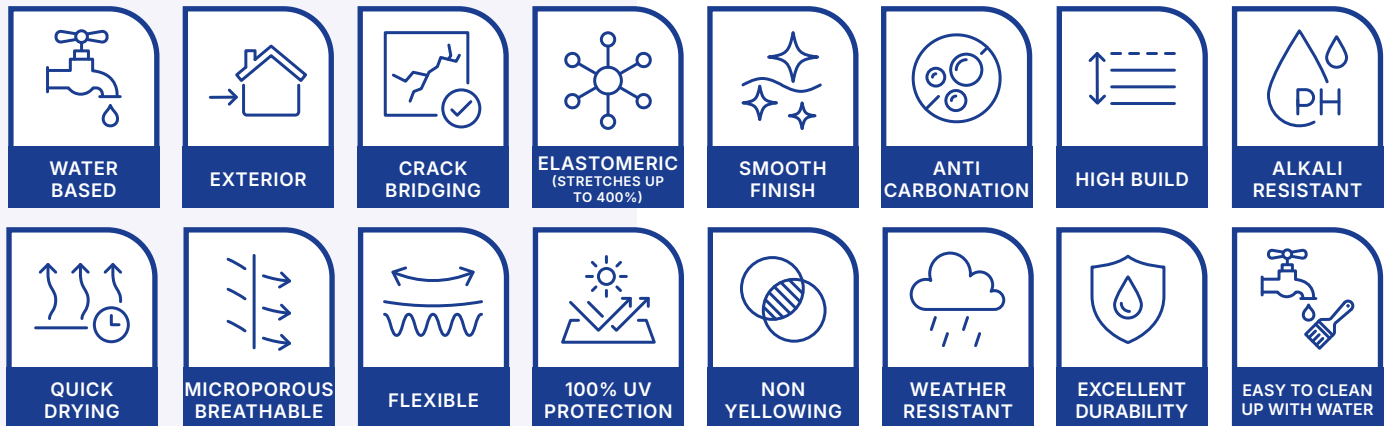
Super-Flex is ideal for roofs, walls and economically prevents or cures all types of leaking roofs, tiles and walls.

This flexible **elastomeric** coating can be quickly applied by brush, roller, or spray to form a high build, seamless waterproof membrane which allows for movement of the underlying substrate for a long life protection.



Roof: Super-Flex Green

# Why choose this paint?



## Properties

Application	Brush, Roller, Spray
Coverage	Roofs: 2m <sup>2</sup> /Ltr* Walls: 10m <sup>2</sup> /Ltr*
Touch Dry	4-6 Hours**
Recoatable	Overnight drying
Finishes	Soft Sheen
Sizes	2.5L, 5L, 20L

## Available Colours

See BEDEC Colour Card

Also available in reflective white and reflective aluminium

\* Depending on surface texture and method of application

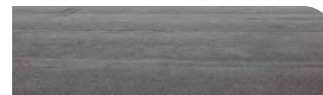
\*\* At a temperature of 18°C and relative humidity of 65%

NOTE: On porous surfaces we recommend a first coat diluted by 30% with clean water

NOTE: Not suitable for applying to surfaces that have no run-off, or where water ponding may occur

## Perfect for use on

### ✓ Roofs



Felt



Slate / Roof Tiles



Clay Tiles



Concrete



Corrugated Iron

### ✓ Walls



Asphalt Roof



Timber



Asbestos



Copper / Lead / Zinc



Glass Reinforced Plastic





**BEDEC**  
THE PAINT COMPANY



**MADE IN  
BRITAIN**

# Acrylic Floor Paint

Acrylic Floor Paint has been specially formulated using a combination of high build modified self cross linking acrylic resins, affording the complete solution for commercial and domestic floor coating needs.

Suitable for use on wood and concrete floors.

Contains a micro aggregate to give slip resistant properties<sup>1</sup>.



## Why choose this paint?



## Perfect for use on interior

- ✓ Cement Floors<sup>2</sup>
- ✓ MDF
- ✓ Chipboard
- ✓ Wooden Floor Boards
- ✓ OSB/Sterling Boards

<sup>1</sup> The clear floor paint is not slip resistant

<sup>2</sup> Power floated concrete floors should be etched or abraded

## Properties

	Application	Brush, Roller, Spray
	Coverage	10-13m <sup>2</sup> /Ltr*
	Touch Dry	<2 Hours
	Recoatable	4 Hours
	Reusable Floor	Light Foot Traffic: 6 Hours**  Heavy Foot Traffic: 16-24 Hours**
	Finishes	Satin
	Sizes	1l, 2.5l, 5l, 20l

## Available Colours

See BEDEC Colour Card

Other colours available to order

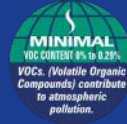
\* Depending on surface texture, porosity, and method of application

\*\* Hot/Wet car tyre pickup can be avoided by the use of protection pads under the tyres

**NOTE:** On porous surfaces we recommend a first coat diluted by 30% with clean water



**BEDEC**  
THE PAINT COMPANY



**MADE IN  
BRITAIN**

# Multi Surface Varnish

A water based varnish manufactured on an acrylic resin, reinforced with Polyurethane.

Designed for application to most substrates including wood, non-ferrous metals, and most types of plastic.

We do not recommend using Multi Surface Varnish on external wood unless it has been previously painted.



## Why choose this paint?



## Perfect for use on

- ✓ Wood<sup>1</sup>      ✓ Copper      ✓ Plastic
- ✓ Aluminium      ✓ Plastics      ✓ Bricks
- ✓ Lead      ✓ MDF      ✓ Stone
- ✓ Galvanized Steel/Zinc      ✓ Chipboard      ✓ Terracotta

<sup>1</sup> Not recommended to use on external wood unless it has been previously painted

## Properties

	<b>Application</b>	Brush, Roller, Spray
	<b>Coverage</b>	15-20m <sup>2</sup> /Ltr*
	<b>Touch Dry</b>	<2 Hours**
	<b>Recoatable</b>	4 Hours**
	<b>Finishes</b>	Gloss, Satin, Matt
	<b>Sizes</b>	500ml, 1L, 2.5L

## Available Colours

Clear

\* Depending on surface texture and method of application

\*\* At a temperature of 18°C and relative humidity of 65%

**NOTE: On porous surfaces we recommend a first coat diluted by 30% with clean water**

**BEDEC**  
 THE PAINT COMPANY

**MADE IN  
BRITAIN**

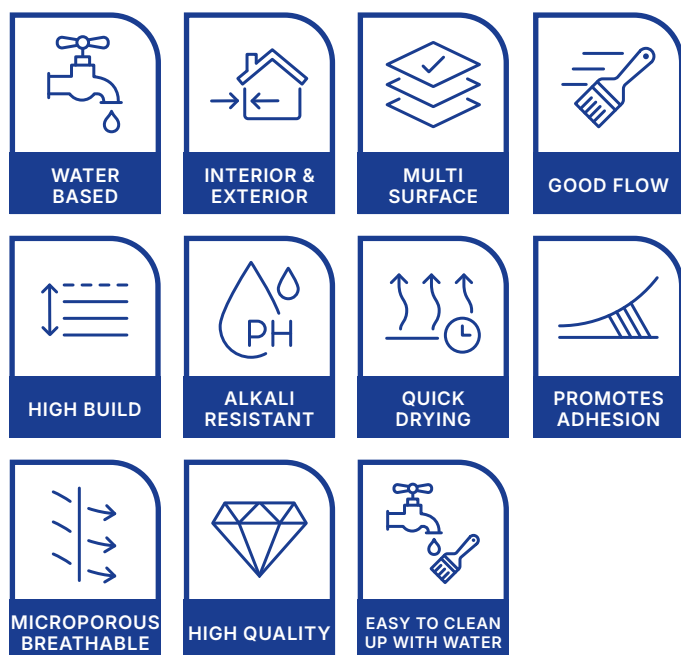
# Aqua Advanced Primer Undercoat

A high-performance acrylic primer undercoat specially formulated using 100% acrylic polymer resin which has a proven performance record for durability, adhesion and water resistance.

Designed for use with water and solvent based enamels, this product is an ideal undercoat for the Aqua Advanced range.



## Why choose this paint?



## Premium quality undercoat for

- ✓ Wood<sup>1</sup>
- ✓ Metal<sup>2</sup>
- ✓ MDF
- ✓ Chipboard
- ✓ Previously painted surfaces
- ✓ Trim - such as Windows, Skirting, Doors, Joinery, Fascia and Soffits

<sup>1</sup> For woods liable to staining we suggest priming with BEDEC ALL PRIME or BEDEC STAIN BLOCK

<sup>2</sup> Anti-corrosive primer such as BEDEC ALL PRIME or BEDEC METAL PRIMER is needed for bare ferrous metals

## Properties

	<b>Application</b>	Brush, Roller, Spray
	<b>Coverage</b>	13-15m <sup>2</sup> /Ltr*
	<b>Touch Dry</b>	<2 Hours**
	<b>Recoatable</b>	4 Hours**
	<b>Finishes</b>	Matt
	<b>Sizes</b>	1L, 2.5L, 5L

## Available Colours

Dark Grey

White

\* Depending on surface texture and method of application

\*\* At a temperature of 18°C and relative humidity of 65%

**NOTE: On porous surfaces we recommend a first coat diluted by 30% with clean water**

**NOTE: Smooth surfaces should be lightly abraded to provide a key**

**BEDEC**  
THE PAINT COMPANY



**MADE IN  
BRITAIN**

# Acrylic Primer Undercoat

Acrylic Primer Undercoat is a cost-effective primer for interior and exterior application.



## Why choose this paint?



## Cost effective undercoat for

- ✓ Wood<sup>1</sup>
- ✓ Metal<sup>2</sup>
- ✓ MDF
- ✓ Chipboard
- ✓ Previously painted surfaces
- ✓ Trim - such as Windows, Skirting, Doors, Joinery, Fascia and Soffits

<sup>1</sup> For woods liable to staining we suggest priming with BEDEC ALL PRIME or BEDEC STAIN BLOCK  
<sup>2</sup> Anti-corrosive primer such as BEDEC ALL PRIME or BEDEC METAL PRIMER is needed for bare ferrous metals

## Properties

	Application	Brush, Roller, Spray
	Coverage	12-15m <sup>2</sup> /Ltr*
	Touch Dry	<2 Hours**
	Recoat	4 Hours**
	Finishes	Matt
	Sizes	2.5l, 5l

## Available Colours

Dark Grey

\* Depending on surface texture and method of application  
 \*\* At a temperature of 18°C and relative humidity of 65%

**NOTE: On porous surfaces we recommend a first coat diluted by 30% with clean water**

**NOTE: Smooth surfaces should be lightly abraded to provide a key**



**BEDEC**  
 THE PAINT COMPANY

**MADE IN  
BRITAIN**

# Stain Block

Stain Block is a unique product incorporating traditional and new technology to produce a water-based product that will hold back most normal stains helping to prevent bleed through that can cause unsightly stains on new paintwork.



## Why choose this paint?



## Perfect for use on

- ✓ Water Stains
- ✓ Nicotine
- ✓ Marker Pen
- ✓ Crayon
- ✓ Tea
- ✓ Coffee
- ✓ Tannin Bleeds
- ✓ Smoke Fire Damage
- ✓ Tar/Bitumen
- ✓ Soft & Hard Woods
- ✓ Wood Knots, Sap, and Tannin Stains

## Properties

	<b>Application</b>	Brush, Roller, Spray
	<b>Coverage</b>	12-14m <sup>2</sup> /Ltr*
	<b>Touch Dry</b>	<2 Hours**
	<b>Recoatable</b>	4 Hours**
	<b>Finishes</b>	Satin Translucent
	<b>Sizes</b>	250ml, 750ml, 2.5l, 5l, 20l

## Available Colours

Grey Translucent

\* Depending on surface texture and method of application

\*\* At a temperature of 18°C and relative humidity of 65%

**NOTE:** On porous surfaces we recommend a first coat diluted by 30% with clean water

**NOTE:** We recommend the application of at least two coats. More coats may be required depending on the severity and type of stain

**BEDEC**  
THE PAINT COMPANY



# Metal Primer

Metal Primer is a specifically formulated water-based anti-corrosive metal primer that can be used on almost any metal surface inside and out.

This water based product is quick drying and easy to apply.



## Why choose this paint?



## Perfect for use on

- ✓ Iron/Steel
- ✓ Lead
- ✓ Aluminium
- ✓ Copper
- ✓ Galvanized Steel/ Zinc
- ✓ Brass

## Properties

Application	Brush, Roller, Spray
Coverage	9-13m <sup>2</sup> /Ltr*
Touch Dry	<2 Hours**
Recoatable	4 Hours**
Finishes	Satin
Sizes	250ml, 750ml, 2.5l, 5l, 20l

## Available Colours

Red Oxide

Phosphate Grey

\* Depending on surface texture and method of application

\*\* At a temperature of 18°C and relative humidity of 65%

NOTE: Smooth surfaces should be lightly abraded to provide a key

# Location Selector

## Finishing Coats

The perfect guide to help you choose the correct paint for the job.

### Living Room and Hallway

	Multi Surface Paint	Barn Paint	Aqua Advanced	SDL	Interior-Flex
Walls, Ceilings and Coving	✓		✓	✓	✓
Trim (Doors, Skirting Board, Window Sills, Window Frames)	✓		✓		
Furniture (Wood <sup>1</sup> , Metal <sup>2</sup> )	✓		✓		
Flooring (Wood <sup>1</sup> , Unglazed Tiles and Concrete)					

### Kitchen

	Multi Surface Paint	Barn Paint	Aqua Advanced	SDL	Interior-Flex
Walls, Ceilings and Coving	✓		✓	✓	✓
Trim (Doors, Skirting Board, Window Sills, Window Frames)	✓		✓		
Cupboards	✓		✓		
Flooring (Wood <sup>1</sup> , Unglazed Tiles and Concrete)					
Ceramic Wall Tiles <sup>4</sup>	✓				

### Bathroom

	Multi Surface Paint	Barn Paint	Aqua Advanced	SDL	Interior-Flex
Walls, Ceilings and Coving	✓		✓	✓	✓
Trim (Doors, Skirting Board, Window Sills, Window Frames)	✓		✓		
Ceramic Wall Tiles <sup>4</sup>	✓				
Furniture (Wood <sup>1</sup> , Metal <sup>2</sup> )	✓		✓		

### Bedroom

	Multi Surface Paint	Barn Paint	Aqua Advanced	SDL	Interior-Flex
Walls, Ceilings and Coving	✓		✓	✓	✓
Trim (Doors, Skirting Board, Window Sills, Window Frames)	✓		✓		
Furniture (Wood <sup>1</sup> , Metal <sup>2</sup> )	✓		✓		

### Outside

	Multi Surface Paint	Barn Paint	Aqua Advanced	SDL	Interior-Flex
Brickwork, Masonry and Concrete	✓	✓	✓		
Outbuildings (Wood, Metal/Plastic Cladding)	✓	✓	✓		
Fences (Wood <sup>1</sup> , Metal <sup>2</sup> , Plastic)	✓	✓	✓		
Trim, Fascia, Soft-fit, Guttering, Barge-board, Window Frames, Doors	✓	✓	✓		
External Equipment <sup>2</sup> , Furniture and Ornaments	✓	✓			



# BEDEC Primers

Extra-Flex



Super-Flex



Acrylic Floor Paint



Multi Surface Varnish



All Prime



Stain Block



Metal Primer



Aqua Advanced Primer Undercoat



Acrylic Primer Undercoat



## Surfaces

Surfaces	All Prime	Stain Block	Metal Primer	Aqua Advanced Primer Undercoat	Acrylic Primer Undercoat
Wood	✓	✓		✓	✓
Plaster	✓	✓		✓	✓
Concrete	✓			✓	✓
Ferrous Metals	✓		✓		
Non-Ferrous Metals	✓	✓	✓	✓	✓
Stains	✓	✓			
Inhibits Rust	✓		✓		

## Silicone Profilers

Bedec Silicone Profilers are designed to be used with flexible sealants and caulks.

Create a clean profile for sealing operations in Bathrooms, Kitchens, Floors, Doors and Windows. Simply choose the size that is suitable for the project and clean afterwards with a suitable cleaning fluid.

**Box contains 3 tools of different size:**

- ✓ 5mm
- ✓ 8mm
- ✓ 10mm



1. For woods liable to staining we suggest priming with BEDEC ALL PRIME or BEDEC STAIN BLOCK
2. Anti-corrosive primer such as BEDEC ALL PRIME or BEDEC METAL PRIMER is needed for bare ferrous metals
3. Not on Fletton bricks, stocks, or Engineering Bricks
4. Not recommended for use in shower cubicals or areas under constant water contact

## Frequently Asked Questions



### Are BEDEC products water based and low VOC?

Yes, all of our products are water based and low or minimal VOC\* content and conform to current regulations. (\*Volatile Organic Compounds).

### Are our products breathable?

Yes, all our products are microporous and breathable.

### Are other colours available in our products?

Most of our products can be ordered in any colour (excluding metallics and fluorescents).

### Can I paint a shower cubicle with any of your products?

No unfortunately not, we do not recommend any of our products to be used in areas under constant water contact such as shower cubicles and baths.

### Can our products be applied on decking?

No, we do not recommend painting our products on decking.

### What is the difference between MSP and Barn Paint?

MSP is an interior and exterior product, it is formulated to have high film build and good flow. Barn paint is an exterior product designed to flex with external surfaces. Both products can be used on similar exterior surfaces.

### Can I paint glass?

MSP and ALL PRIME can be painted on the internal facing side of glass.

### What temperature does it need to be to paint outside?

It needs to be above 8 degrees Celsius before painting outside. The temperature of the environment and surface you are painting on to needs to stay above this level until the paint has had time to dry. Cold and humid/damp environments will adversely affect drying times.

### Can I paint in the rain?

No.

### Can I paint over Mordant solution?

No. We do not recommend painting any of our products over Mordant solution.

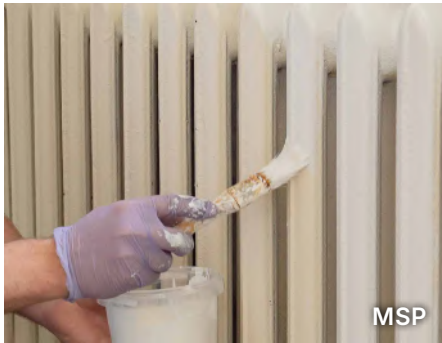
### Are samples available?

Yes, we offer free of charge samples for most of our products.



## Why do we recommend a diluted first coat on porous substrates?

If the surface is porous, a diluted (30% clean water) first coat allows the paint to penetrate the substrate and act as a binder/sealer to allow further coats to sit on top, which will protect and provide a much longer life span. A stabilizer solution is not required with BEDEC surface coatings.



## Can you paint over Extra-Flex and Interior-Flex?

Yes, you can paint over these products, but it may mean that the hairline cracks will re-appear. It is best to use the same product when overcoating.

## Are our products safe to use on areas with animals?

All of our products are completely water based and safe to use on animal areas such as stables, bee hives, dog kennels etc.

Our products are safe to be painted on children's furniture.

## Can I paint a fire place?

Our rule of thumb is, if it's too hot to touch then it's too hot to paint. Remember to apply the paint when the object/surface you are painting is at room temperature. Our paints are not designed to be applied on substrates that go above 80° Celsius.



## The colour I have received looks different to the colour card or website?

Our product guides are only a guide on colour as they are dependent on the printing. Screen colours can vary from each computer so if you would like to see a true colour before purchasing a tin, please request a sample or a dry colour pattern. Paint in its wet form is always a different colour from the dry form.

## I have purchased two tins from different batch numbers to use on the same task and they are slightly different?

Like wallpaper, different batches of paint will have a slight variation in colour. To avoid this ensure you order enough paint to finish the project.

If you have already purchased two batches of paint you can blend the two batches together.

## Can your products be used on lime?

We do not recommend using any of our products where lime is present.

## Can I paint over damp patches?

Any structural issues causing damp need to be fixed before application of paint. Our paints are breathable but it will not solve a damp problem.

## Do I need to prime galvanized steel?

MSP and Barn Paint can go straight on to external galvanized steel if it has been weathered for 2 months, if it hasn't or is interior then it will need to be degreased with warm soapy water or methylated spirits.

## Can I paint on Corrugated Asbestos roofing?

Yes you can. Super-flex is the best option. We suggest you clean down the surface and apply a anti-fungicidal wash if required and thin the first coat with 30% water.

## I have opened the tin and it's the wrong colour?

The paint needs to be thoroughly stirred before checking the colour and using.



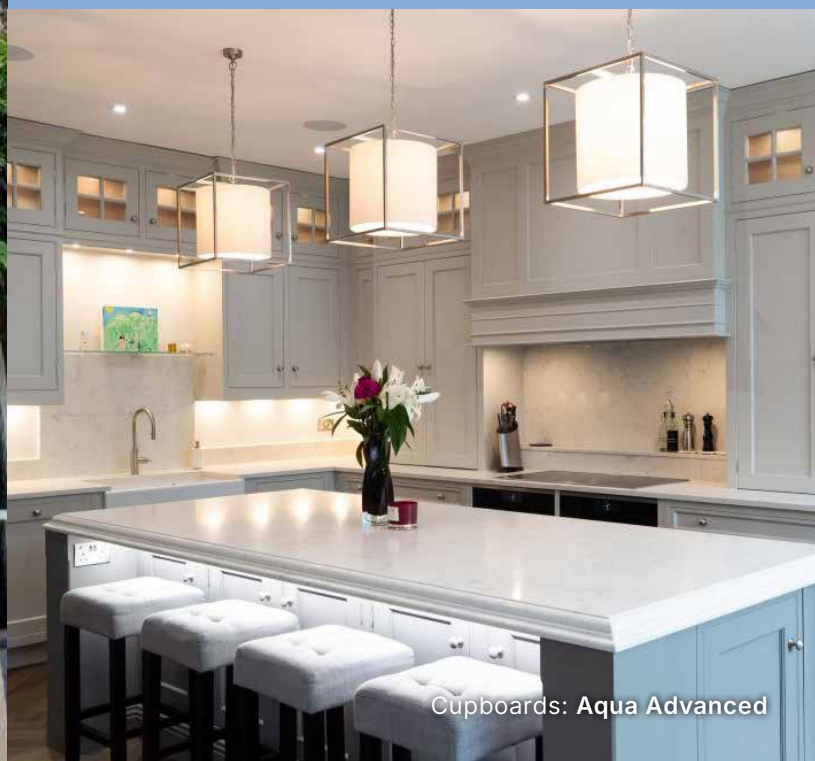




Cladding: Barn Paint



Walls: Extra-Flex  
Window Frames: Aqua Advanced  
Stone Work: MSP



Cupboards: Aqua Advanced





Graphics: MSP



Cladding: Barn Paint



Cladding: Barn Paint



Window Shutter: MSP

# Product Guide

Product	Description	Interior	Exterior	Self Priming / Self Undercoating	Finishes	Spread	Sizes	Colours	VOC Level
Multi Surface Paint (MSP)	Paint for any surface. Flexible and durable. Takes the thinking out of painting	✓	✓	✓	Matt, Satin, Gloss	12-14 m <sup>2</sup> /L	250ml, 750ml, 2.5l, 5l, 20l	See BEDEC colour card	Low
Barn Paint	Durable, Long Lasting, Flexible and Non Cracking, Outside Paint		✓	✓	Matt, Satin, Gloss	13-15 m <sup>2</sup> /L	2.5l, 5l, 20l	See BEDEC colour card	Low
Aqua Advanced	High Quality Trim Paint	✓	✓		Matt, Satin, Egg Shell, Gloss	13-15 m <sup>2</sup> /L	1l, 2.5l, 5l	See BEDEC colour card	Low
Aqua Advanced Primer Undercoat	A High Performance Acrylic Primer Undercoat, 100% Acrylic Resin, Multi Surface	✓	✓	n/a	Matt	13-15 m <sup>2</sup> /L	1l, 2.5l, 5l	See BEDEC colour card	Low
SDL	Wall and Ceiling Paint, Anti-Reflective <2%, Low Matt	✓		✓	Matt (<2%)	10m <sup>2</sup> /L	5l	White	Minimal
All Prime	Primer, Bond Coat Sealer, Grip Primer, Stain Blocker, Metal Primer, Rust Inhibitor	✓	✓	n/a	Matt	10m <sup>2</sup> /L	750ml, 2.5l, 5l	White Dark Grey	Minimal
Interior Flex	A paint that does not crack on internal walls	✓		✓	Low Sheen	9-11 m <sup>2</sup> /L	2.5l, 5l	Brilliant White Magnolia	Minimal
Extra Flex	Masonry paint, a paint that does not crack on external walls		✓	✓	Smooth Satin	9-11 m <sup>2</sup> /L	5l	See BEDEC colour card	Low
Super Flex	Flexible roof coating, waterproof, can also be used on walls		✓	✓	Soft Sheen	Roof: 2m <sup>2</sup> /L Wall: 10m <sup>2</sup> /L	2.5l, 5l, 20l	See BEDEC colour card	Low
Acrylic Floor Paint	The complete solution for commercial and domestic floor coating needs	✓		✓	Satin	10-13m <sup>2</sup> /L	1l, 2.5l, 5l	See BEDEC colour card	Low
Multi Surface Varnish (MSV)	Tough polyurethane, acrylic varnish	✓	✓	✓	Matt, Satin, Gloss	15-20 m <sup>2</sup> /L	500ml, 2.5l, 1l	Clear	Minimal
Acrylic Primer	Cost effective acrylic primer	✓	✓	✓	Matt	12-15 m <sup>2</sup> /L	2.5l, 5l	Dark Grey	Low
Stain Block	Stain blocking agent (Nicotine, water stains, marker pen, crayon, tea and coffee, smoke, and more...)	✓	✓	n/a	Satin	12-14 m <sup>2</sup> /L	250ml, 750ml, 2.5l, 5l, 20l	Translucent Grey	Minimal
Metal Primer	Rust Inhibiting Primer	✓	✓	n/a	Satin	9-13m <sup>2</sup> /L	250ml, 750ml, 2.5l, 5l, 20l	Red Oxide Phosphate Grey	Low



# Simply a Better Paint

***BEDEC***  
THE PAINT COMPANY





Find us online  
[www.bedec.co.uk](http://www.bedec.co.uk)

Version 3

**Need Advice?** Talk to an expert:

01279 876657

Monday – Friday: 8:00am – 4:30pm

[info@bedec.co.uk](mailto:info@bedec.co.uk)

We aim to reply within 1 working day

Head Office: Poplars Farm, White Roding, Dunmow, CM6 1RY



@ Instagram



f Facebook