



# 2016 ANNUAL REPORT





## 2016 ANNUAL REPORT

Dear Friends,

I'm honored to be approaching my four-year anniversary as CEO of World Hope International. It's rare to find a vocation where you love not only the work you do, but the people you do it with. The staff at World Hope is of the highest caliber. I am surrounded by skillful and Christ-like individuals, from Anna Vines, our Enable the Children director who recently won a UK "Point of Light" award from UK Prime Minister Teresa May, to Saidu Kanu, who is celebrating seventeen years as our Country Director in Sierra Leone. I'm encouraged by the creative and capable minds

of Dr. Alison Padget, our distinguished International Program Director, and Talmage Payne, former Hagar International CEO and World Vision Cambodia National Director, who brings his visionary mind to our blooming Cambodia programs.

I'm always striving to be a better leader and asking myself how to keep World Hope moving toward what God has in store. Another leader, Amazon CEO Jeff Bezos, recently wrote that it is always Day 1 for his company. He knows that it is important to keep the fresh energy, excitement, and determination of a startup alive in an already thriving organization. The day Amazon becomes complacent about their growth is the day they begin to die.

World Hope knows this to be true. For twenty years, God has been blessing World Hope by growing our donor base, infrastructure, and influence. What began in the bedroom of a parsonage in Missouri has grown into a vibrant relief and development organization that employs over 300 people and provides relief and development opportunities to hundreds of thousands annually. God has grown our heart for the poor as well as our capacity to make wide scale poverty alleviation possible.

Amidst this blessing, in 2016 we asked God to give us humble hearts that were ready to move into whatever he had next. Whenever he asks, "Whom shall I send?" we will always respond with the same willingness and anticipation as Day 1 — "Here we are, Lord, send us!" (Isaiah 6:8)

2016 was a year marked by exciting and innovative developments for World Hope. A groundbreaking 134 borehole water wells were drilled, a 44% increase from 2015 that impacts 90,463 new beneficiaries. Alongside USAID and the JSI Research & Training Institute, Inc., World Hope pioneered water tower and gravity tank systems that provide solar-powered running water to maternity clinics and health centers.

We're consistently affirmed in our confidence of the entrepreneurial spirit of women. That's why in Cambodia we helped women innovate by jumpstarting mushroom houses as profitable small businesses. Seven mushroom houses were built with plans for dozens more in 2017. We are already seeing great returns, with women reporting income from one mushroom house that nearly doubles the average income for a rural Cambodian.

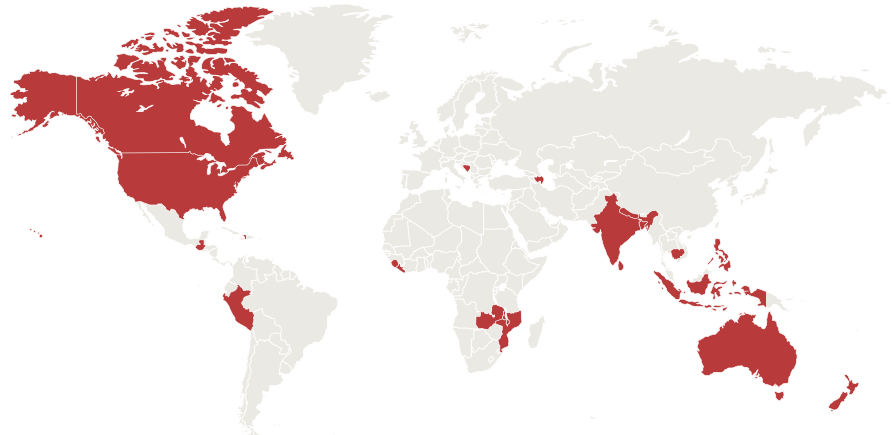
World Hope has long been invested in improving maternal and child health in West Africa, but in 2016 we piloted a new and important initiative to reduce infant mortality in Sierra Leone. Helping Babies Breathe is training 2,500 traditional birth attendants in basic newborn resuscitation. With the vision and abilities provided by World Hope's enthusiastic team, this project is anticipated to save 6,500 young lives!

We also launched our first successful Mobile Power pilot in Pate Bana, a village that was dramatically impacted by the Ebola outbreak in Sierra Leone. These smart, rechargeable solar batteries are helping keep families connected through mobile phone charging, and smart battery-powered light bulbs are allowing children to study at night.

From running water to economic opportunity to clean electricity, World Hope is empowering our skilled staff to implement programs that address the root causes of poverty and unlock the God-given capabilities of the poor. We hope that you will unite with us in prayer and support of what God is doing through World Hope International.

In Christ,

John Lyon  
CEO & President



# 2016 IMPACT SNAPSHOT



## Agriculture

- **45 new greenhouses** were built.
- WHI piloted **3 greenhouses** in Cambodia with a grant from the U.S. Department of State to trial innovations that help farmers cope with the effects of climate change.
- WHI expanded its Mushroom Program into a second community in Cambodia with **23 Mushroom Houses**. **25 farmers** are now invested in Mushroom Houses, which have an average return on investment of **3 1/2 months**.
- **1,400 farmers** benefited from **77 GRO greenhouses**, producing 120,487 kg of vegetables. The growing season under greenhouse and drip irrigation can be extended from 6 to 12 months, increasing crop yields up to 300%, when compared to crops grown in an open field without drip irrigation.
- **10 new cattle clusters** were launched in Mozambique, including **104 new cows** and **19 new bulls**. Over half of the cattle recipients were women. **339 young calves** within the clusters were vaccinated by WHI-trained village vets.
- **3.7 acres of pineapples** were planted under drip irrigation and another acre planted using the dry planting method in the Hope Farms Demonstration Plot.
- **5 new community gardens** were formed in Mozambique (11 total). Farmers in **10 villages** cultivated over **50 acres** of pineapple and produced over **40,000 pounds** of fruit.
- **429 total families** participated in the garden project meeting nutritional needs and cash income.



## Anti-trafficking and Gender-based Violence

- **52 survivors** were given residential care at the WHI center in Sierra Leone.
- **72 survivors** from Sierra Leone received psychosocial, physical, and social support.
- **50 survivors** from Sierra Leone were reunited with their family members.
- **45 survivors** and their family members in Sierra Leone received income generation support.
- **45 child survivors** were reunited with their families and 24 were provided assistance for school in Liberia.
- **4,759 people** in **43 communities** in **5 counties** were reached through WHI trafficking awareness campaigns in Liberia.
- **802 phone calls** received on Liberia's new national hotline supported by WHI, leading to the rescue of **48 trafficked children**.
- **19 members** of the hotline task force, **31 media personnel**, and **45 police, immigration**, and other law enforcement officials were trained by WHI.
- **31 social service providers** in Cambodia received training in counseling and case management skills.
- **53 female survivors** of violence helped through individual and group therapy.
- **50 outreach events** and **2 media campaigns** to raise awareness of sexual and gender-based violence.



## Water and Sanitation

- **134 wells** drilled.
- **90,463 beneficiaries**.
- **686 average beneficiaries** per well.





## Child Sponsorship

- **93%** of all WHI sponsored children passed their school year and will move on to the next grade level.
- In Grade 6, **100%** of sponsored children in Sierra Leone passed the National Primary State Exam, exceeding the countrywide passage rate of 75%.
- Additionally, **94% of the sponsored boys and 100% of the sponsored girls** passed the Basic Education Certificate Exam! Countrywide, the normal passage rate is 47% on this exam.
- New sponsorships more than **tripled** from 2015 to 2016 (51 in 2015 to 174 in 2016)!
- **1,261 Active sponsorships** benefited **1,890 children**.
- WHI's partner school Batotitik Mission Academy (BMA) is ranked the **2nd best primary school** in their district in conflict-torn Southern Mindanao, Philippines.
- **3,782 child letters**, updates, and photos were collected from children all around the world.
- **100 churches** raised over **\$20,000** to help **500 children** continue their educational pursuits in Sierra Leone, Haiti, and the Philippines.



## Health and Nutrition

- **76,000 children** were screened for malnutrition and 3,000 cases of severe acute malnutrition were treated using ready-to-use therapeutic food.
- **750+ pregnant women** were transported in WHI ambulances to 3 hospitals
- **580 children** living with disabilities in Freetown, Sierra Leone, received physical therapy, occupational therapy, care and support services. **1,000+ families** were seen by family support workers.
- **210 local leaders** were helped to understand the needs of children with disabilities and their families.
- **1,923 home visits** were made by therapists. **207 children** were provided with specialized equipment. **12 families** were provided start-up grants. **23 children** received school sponsorship. **97 disability clinics** were held where **404 new patients** were admitted to the programs.
- **2,150 caregivers** were trained from 42 chiefdoms with the goal of reducing neonatal mortality in hard-to-reach areas.
- **254 new mother support groups** were formed (**1,746 total**) to help empower women to breastfeed their children
- **750 Community Health Workers (CHWs)** completed a 10-day training on maternal and neonatal health and malnutrition. These CHWs provided oversight and care to **20,000 pregnant and lactating women** and **87,000 children aged 0 to 5**.
- **432 visits** to public health centers by Ebola survivors. WHI Survivor Advocates conducted **2,813 home visits** to monitor survivors' wellbeing and health needs.
- Delivered medicines and supplies to **38 health centers** in Sierra Leone. One of these deliveries involved **2 ultrasound machines** that were donated by General Electric (GE) to Kamakwie Wesleyan Hospital and Masanga Hospital.





## Education

### In Bosnia and Herzegovina...

- Provided **7 seminars** for teachers, professionals and community groups with **500+ attending**.
- **20+ women** attended knitting class—an opportunity to practice conversational English.
- **31 children** attended language classes.

### In Azerbaijan...

- **155 students** participated in English lessons through classes and conversation clubs. Of these, 29 were refugees and 17 were internally displaced persons.
- **14 students** were taught IT skills, 4 of whom were refugees.

### In Sierra Leone...

- WHI implemented the Early Childhood Development pilot project in **10 under-resourced communities** in Bombali District, Sierra Leone.
- **999 children** have been registered in **17 ECD Centers**: 515 females and 484 males.



## Emergency Response

- Hurricane relief in Haiti: distributed **2,000 water filters, 2,520 hygiene kits, 342 tarps, 900 food packages, 900 cleaning kits** to help feed and shelter families in **9 communities**.
- After the earthquake in Ecuador, WHI supplied and distributed **700 water filters** and **8,400 hygiene kits** to the highly affected Manabi and Esmeraldas provinces.

## Rural and Economic Development

- **139 Cambodian women in 5 villages** received support for agriculture and water projects.
- Drilled **12 water wells** in Cambodia.
- Constructed **7 mushroom houses** for the Sisters project in Cambodia.
- **5,040 small loans** and **2,847 savings accounts** mobilized in Cambodia.
- **400 banana trees** were planted in the Philippines.
- **16 families** in the Agay village in the Philippines are caring for **12 cows, 6 calves, 6 carabaos**.
- **518 people** received Livelihood Support for Ebola Survivors in Sierra Leone: monthly cash payments, small grants for business start-ups, training in financial literacy, savings and loans, and modern agriculture techniques.
- Constructed **3 churches** in Sierra Leone
- **3,441 petty traders** in Sierra Leone received loans and **984** received business training
- Distributed **110 goats** in Sierra Leone to increase income for recipients and provide an important source of nutrition
- Trained **75 farmers** in modern agriculture practices in Sierra Leone.
- Distributed **1,400 treated mosquito nets** to 8 communities to combat malaria in Sierra Leone.
- Built **14 latrines** as a part of Sierra Leone's Village Partnership program.

# 2016 CONSOLIDATED FINANCIAL SUMMARY

For the Year Ended December 31, 2016

World Hope International is a 501(c)3 charitable organization committed to maintaining the highest standards of fiscal responsibility, accountability and transparency. The complete audited financial statements are available at [www.worldhope.org/about-us/annual-report](http://www.worldhope.org/about-us/annual-report).

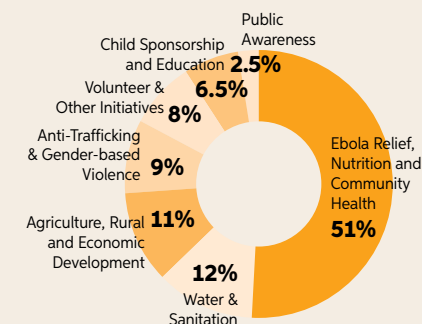
## REVENUE AND SUPPORT

	TOTAL (USD)
Contributions	\$5,020,651
In-kind contributions	4,501,170
International grants	2,132,810
Federal grants and contracts	712,791
Program income	52,328
Other income	16,906
Investment income, net	17,585
<b>TOTAL</b>	<b>\$12,454,241</b>

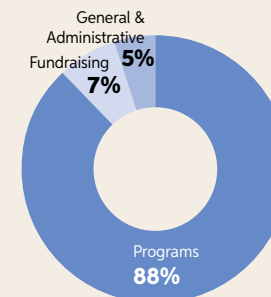
## EXPENSES

Program Services	
Ebola Relief, Nutrition and Community Health	5,517,143
Water and Sanitation	1,342,142
Agriculture, Rural and Economic Development	1,242,059
Anti-Trafficking and Gender-Based Violence	994,265
Volunteer and Other Initiatives	824,329
Child Sponsorship and Education	706,742
Public Awareness	269,756
General and Administrative	665,364
Fundraising	860,089
<b>TOTAL</b>	<b>12,421,889</b>
Change in net assets	\$32,352
<b>Total year-end net assets</b>	<b>\$2,440,953</b>

## PROGRAM EXPENSES:



## ALLOCATION OF EXPENSES:



## EXECUTIVE LEADERSHIP

John Lyon, President & CEO  
 Gayle Rietmulder, Vice President of Finance/CFO  
 Dr. Alison Padget, Vice President of Programs

## BOARD OF DIRECTORS

Mike Chambers, Chair  
 Owner and Manager, Frontier Enterprises  
 Jeff Swartzendruber, Vice Chair  
 President, Image Pointe  
 Kevin Batman, Treasurer  
 General Treasurer, The Wesleyan Church

Bobbie Strand, Secretary  
 President, Strand Resources  
 Dr. David Blanchard  
 Retired President, Lockheed Martin Space Missions Systems Division  
 Steve Brown  
 CEO and President of Bullen Ultrasonics, Inc.  
 Quillan Byam  
 Corporate Counsel, Blackboard  
 Robert Clyde  
 Retired President, AIG Japan/Korea  
 Stephanie Gilmer  
 Executive Director, World Hope Canada

Dennis Jackson  
 General Director, Global Partners, The Wesleyan Church  
 John Lee  
 Retired Vice President, Praxair Corporation  
 V. James Mannoia  
 Managing Director, Goldman Sachs  
 Steve McEuen  
 Lead Pastor, Stoney Creek Community Church  
 Jennifer Murtie  
 Chief Operating Officer, Pathstone  
 Gary Ott  
 President, TLC Management

Jeri Sape  
 Attorney, DBF Associates  
 Jonathan Shafer  
 Vice President, CNL Financial Group

## NON-VOTING MEMBERS

Dr. Jo Anne Lyon  
 Ambassador and General Superintendent Emerita, The Wesleyan Church; Founder, World Hope International  
 John Lyon  
 President, World Hope International

## 2016-2017 Gifts & Memorials

World Hope International is proud to serve the poor, vulnerable and exploited in honor or memory of your loved ones. The following names reflect gifts and memorials made from July 2016 to June 2017.

### In Celebration of ...

**MITCHELL & CAMERON ALLEY** by Rachel Waters  
**JUDY BELL** by Phillip Smart  
**CENTRO DE ORACION Y LIBERTAD AMALIA LOZANO** by Centro De Oracion Y Libertad  
**DICK & CINDY DOAN** by Di LaPointe  
**PIPER KAYLYNN DOUGALL** by Cheryl Karpen  
**LIZ, JACOB, & MARY FOSTER** by Joshua Dankoff  
**FREDRIC FREDRIC** by First Baptist Church Friendswood  
**MICHEAL GETHING** by Mary O'Donnell  
**JOEL HOWARD** by James Docherty  
**SAIDU KANU** by Gregory Bish  
**ZACH KRENZ** by John Krenz  
**LIZ LOCKWOOD** by Mark Kurz  
**CALEB & BEN LYON** by Bruce Allison  
**CHARLOTTE MARANO** by Neil Flaherty  
**MAXWELL ROBERT MARTIN** by Rebecca Whitesel  
**MIKE MUELLER'S BIRTHDAY** by Janice Drake  
**MR. & MRS. ARTHUR SEGOOL** by Brian Segool  
**HENRY SMART** by Phillip Smart  
**LINDSEY SMART** by Phillip Smart  
**JACK STEENBERGH** by Tim Steenbergh  
**NATHAN THOMAS** by Ruth Thomas  
**ANNA VINES** by Veronika Kramer  
**KIDS OF THE WARD FAMILY** by David Ward  
**MY SON'S 28TH BIRTHDAY** by Rene Hughey


### In Honor of...

**ANDREWS/HARDING** by Evelyn Rickman  
**DR. GEORGE BEALS & MRS. ROWENE BEALS** by Beverly Kelsven  
**EVA BIRT** by Myrene Birt  
**THE MARRIAGE OF PETER & JAIMIE BUCHAN** by Russell Weller, Agtek Farms, Todd Brockshus  
**NADEAN MUELLER CHARDNAY'S BIRTHDAY** by Janice Drake  
**ROBERT, ANNA, ALEX, & JESSICA CHONG** by Jessica Chong  
**NAOMI & KENTNER CROTCHETT** by Kirk D. Statler  
**MR. DUANE CUTLER & MRS. JOAN CUTLER** by Howard Hensel  
**MR. KENNETH DRURY & MRS. ELIZABETH DRURY** by Howard Hensel  
**DENISE MUELLER EASH'S BIRTHDAY** by Janice Drake  
**CHERYL EDWARDS** by Beverly Kelsven  
**CONNIE ERPELDING'S 55TH BIRTHDAY** by Clara Eaves  
**CAROL FINCH** by Brian Segool  
**CRAIG HALDEMAN** by Margret Garrison  
**MIKE & KARLA HALLACY** by Second Story Homes  
**KYLE & HOPE HINTERMAN** by Chris Hinterman  
**MR. BARRY HIRSCHOFF** by William Cushing  
**WAYNE HOWARD** by First Wesleyan Graham, North Carolina  
**CATHY HOWIE** by Rebecca Banker  
**DAVID & LYNDA LEWIS** by Terry W. Penland

**BETTY LUNDBERG** by David Kahler  
**DR. JO ANNE LYON** by Diane Komp, Sue Rickman, Kathryn Troyer  
**WAYNE LYON** by Elizabeth Frick  
**LARRY MCALPINE** by Shelby J. Simmons  
**CHRIS & MELISSA McDERMOTT** by Jaimie Cartwright  
**JANE MCINTOSH** by Leslie Hirsch  
**TONY & LAURA MEYER** by Jaimie Cartwright  
**THE LIFE-GIVING WOMEN OF MOUNTAIN VIEW CHURCH** by Mountain View Wesleyan Church  
**JANET NICKELL** by Diane Komp  
**TROY & CHELSEA NISSEN** by Jaimie Cartwright  
**ORRANGE FAMILY** by Emma Massey  
**LEW & SARAH REARICK** by Terry W. Penland  
**PETER & ELAINE RHETTS** by Ruth Kauffman  
**JOHN & JULIA ROBINSON** by J. Donavon Shoemaker  
**JOSHUA SIDERS** by The Well  
**LEANN SMART** by Brandon Smart  
**BRAYDEN SMITH** by Lynne Curtis  
**MR. JOEL STEINDEL & MRS. KATHLEEN STEINDEL** by Howard Hensel  
**MRS. BOBBIE STRAND** by Terry Slye  
**SYDNEY SWART** by John Swart  
**ANNA VINES** by Rita Vanags  
**WESLEYAN MISSIONARIES IN HAITI** by Kenneth S. Taber

### In Memory of...

**E. STANLEY & EVELYN BANKER** by Joetta Aglikin, William L. Beekman, Wenda Clement, Roberta Gunter, Elizabeth J. Haines, Donna J. Sprowl, Richard E. Sprowl, Upland Friends Church  
**YOMBOH CONTEH** by Feremus Kamara  
**CHURCH FAMILY** by First Wesleyan Church, Graham, North Carolina  
**DENISE MALCOLM DETEAU** by New Leaf Church  
**EMMA LEE DUNN** by Larry McAlpine  
**MS. MARIE EVATT** by Elizabeth Traxler  
**HELENE JESKE** by Aimee Lin  
**MARION KELSVEN** by Rowene Beals  
**CHARLES & JOYCE KINNEY** by Shirley McLain  
**BOB KURTZ** by Vanguard Charitable  
**REGINA LAVALLEE** by Diane Potts  
**MARILYNN LONGENECKER** by Donna Anderson, Katherine Bigler, Virginia Denesha, Holly Faw, Myra Frey, Carolyn A. Hampson, Delores Longenecker, Marilynn Longenecker, Richard Reimer, Sheridan Bakers Corner Wesleyan Church, Lucille Taylor, E.J. Whitfield  
**KENNETH NIELSEN** by Doris Nielsen  
**BARBARA NORRIS** by Michael Norris  
**DORIS PATTERSON** by Rebecca Whitesel  
**KRISTI ROBINSON** by Joe Kimes  
**RUTH ROTHFUSS** by Marcia DePriest  
**STEVE SAUNDERS** by Carolyn Saunders  
**DOUG SCAGGS** by Tony Thampan  
**HENRY SMART** by Cathy Emery, Lloyd & Cathy Humphrey, Linda Lawrence  
**REV. CLINTON WOODS** by Stephen Bechdol



*“Therefore I command  
you, ‘You shall open  
wide your hand to  
your brother, to the  
needy and the  
poor in your land.’”*

—Matthew 25:40



*Opportunity. Dignity. Hope.*

**CORRESPONDENCE:**

World Hope International  
1330 Braddock Place, Suite 301  
Alexandria, VA 22314  
888-466-4673  
info@worldhope.org  
WorldHope.org

**CONTRIBUTIONS:**

World Hope International  
Attn: Gift Processing  
PO Box 743794  
Atlanta, GA 30374-3794  
WorldHope.org



**WORLD HOPE E-UPDATES:** Sign up to receive the latest WHI news online at [worldhope.org](http://worldhope.org)

**E-RECEIPTS:** In an effort to further reduce our administrative costs and protect the environment, we are pleased to offer e-receipts to our donors. If you would like to receive e-receipts for your donations please email your request to [donorservices@worldhope.org](mailto:donorservices@worldhope.org) or call 1-888-466-4673.



*This booklet was printed on paper made from post consumer waste, recycled fiber and virgin pulp from sustainably managed forests. It was printed with soy-based inks with low VOCs.*