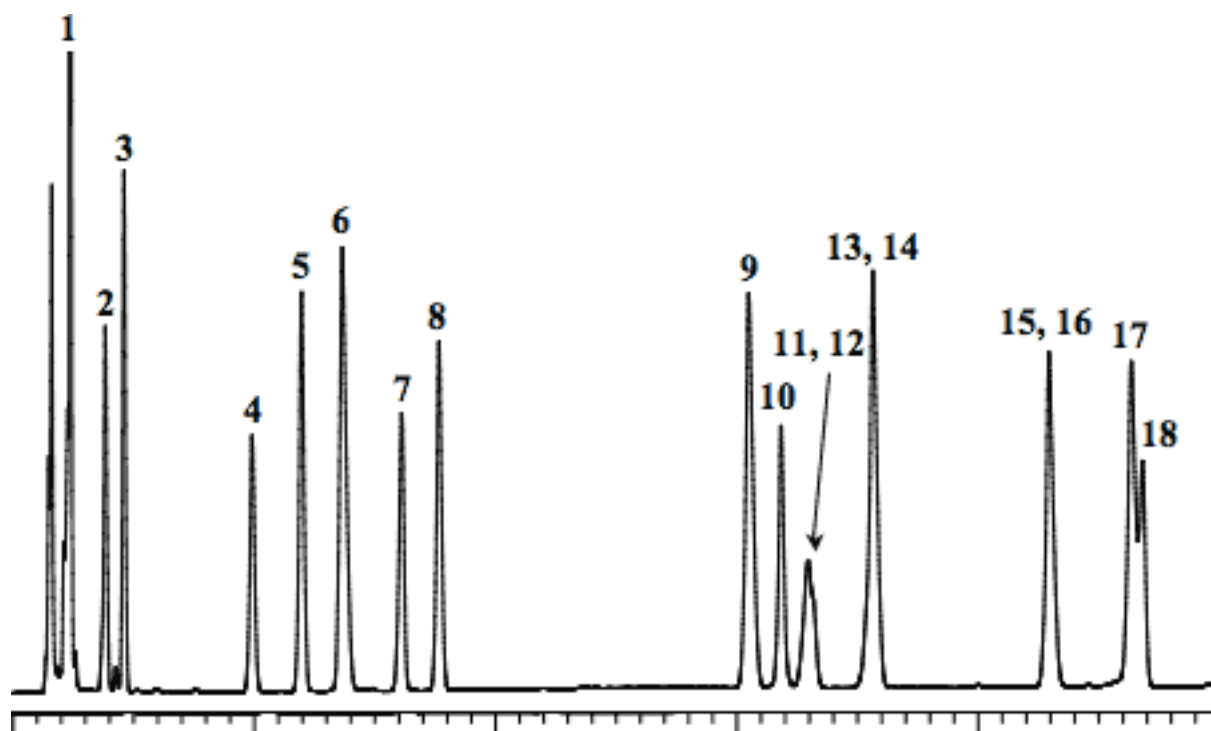


Analysis of Food Dyes

Data No. LA509-0734



System : GL-7400 system

Column : Inertsil ODS-3 (5 μ m, 150 \times 4.6 mm I.D.)

Column Cat. No. :

Eluent : A) CH₃CN

B) 10mM Na₂HPO₄

A/B = 10/90 - 50 min. - 35/65

Flow rate : 1.0 mL/min.

Col. Temp. : 40 °C

Detection : PDA 200 - 700 nm

(270 nm, GL-7452 PDA Detector)

Injection Vol. : 10 μ L

Sample : Food Dyes

Solutes : 1. Tartrazine (Food Yellow No. 4, 7.6 mg/L)

2. Amaranth (Food Red No. 2, 3.8 mg/L)

3. Ingigocarmine (Food Blue No. 2, 7.6 mg/L)

4. New coccine (Food Red No. 102, 3.8 mg/L)

5. Sunset Yellow FCF (Food Yellow No. 5, 5.3 mg/L)

6. Naphthol Yellow S (7.6 mg/L)

7. Uranine (3.8 mg/L)

8. Allura red AC (5.3 mg/L)

9. Ponceau R (7.6 mg/L)

10. Ponceau SX (5.3 mg/L)

11. Orange I (5.3 mg/L)

12. Fast green FCF (Food Green No. 3, 3.0 mg/L)

13. Brilliant blue FCF (Food Blue No. 1, 3.0 mg/L)

14. Ponceau 3R (7.6 mg/L)

15. Erythrosine (Food Red No. 3, 5.3 mg/L)

16. Azure Blue VX (Sulfan blue, 3.0 mg/L)

17. Orange II (7.6 mg/L)

18. Acid red (Food Red No. 106, 3.0 mg/L)