

Polar Bears & Beluga Whales



Animals of the Arctic | Summer Expedition





Your 7-Day Itinerary

NOTE: Daily activities will be determined by weather, opportunities to view wildlife, and other various elements that make up the diverse Arctic summer. Guests will receive a daily itinerary, which will be flexible and updated frequently. The itinerary below is a general listing of activities and excursions that may happen during any part of the program.

Day 1: Arrive in Winnipeg, Manitoba, Canada / Assiniboine Park Zoo (R,D)
Welcome reception, dinner, and presentation
Overnight: Fort Garry Hotel & Spa

Day 2: Winnipeg / Flight to Churchill / Cultural and Heritage Tour (B,L,D)
Panoramic site visits: Miss Piggy Plane Crash site, Polar Bear "Jail," and Cape Merry
Overnight: Lazy Bear Lodge

Day 3: Churchill / Boat Tour / Prince of Wales Fort / Dog Mushing (B)
Zodiac boat tour providing up-close whale watching and photography opportunities, dog cart ride
Overnight: Lazy Bear Lodge

Day 4: Churchill / Hudson Bay Coastal Tour (B,L)
Full-day bear- and whale-spotting excursion aboard a custom water vessel
Overnight: Lazy Bear Lodge

Day 5: Churchill / Arctic Crawler Experience / Itsanitaq Museum (B,L,D)
With cameras in hand, board the Arctic Crawler™ to traverse the beautiful landscapes and search for wildlife, Itsanitaq Museum tour
Overnight: Lazy Bear Lodge

Day 6: Churchill / Northern Studies Centre / Flight to Winnipeg (B,L,R)
Interactive presentation and learn about current research, farewell reception
Overnight: Grand Winnipeg Airport Hotel

Day 7: Depart Winnipeg (B)

Program Highlights

- Join fellow travelers for a warm welcome, then step out for a special evening reception in Assiniboine Park Zoo's underwater viewing tunnels. Observe the polar bears and seals as they swim in the crystal clear pools above you. A three-course meal with wine is served under the dancing Northern Lights in the Aurora Borealis Theatre. Following dinner, enjoy a presentation on the magnificent polar bears.
- Embark upon two separate water tours of Hudson Bay to see many of the 60,000 beluga whales that inhabit the area. Keep an eye out for polar bears, caribou, seals, and a multitude of bird species found along the shore.
- Aboard the Arctic Crawler™, venture out onto stark and beautiful landscapes, stopping to enjoy the scenery as you search for arctic hare, snowy owl, ptarmigan, or arctic fox.
- Choose between two optional guided excursion activities (additional fee): a 3-hour kayaking tour or a 3-hour Beluga AquaGliding™ tour.
- Visit Churchill's Itsanitaq Museum for an exploration of indigenous ways of life while viewing remarkable examples of Inuit craftsmanship.
- Meet an energetic team of sled dogs and their experienced handler, then climb into a dog cart for your own exciting ride.
- **What's included:** 6 nights hotel and lodge accommodations; round-trip airfare for the charter flight between Winnipeg and Churchill, 6 breakfasts, 4 lunches, and 3 dinners including a special welcome reception and dinner, and a farewell reception; full guiding services of an Orbridge Expedition Leader and a local naturalist; excursion transportation and entry fees; and all gratuities.

(B=Breakfast, L=Lunch, D=Dinner, R=Reception)

Activity Level: Guests should be sure-footed on stairs, ramps, and small vessels and able to walk on uneven ground without assistance. Skiffs provide the mode for much of the exploration on this program and guests should be sure-footed to enter/exit the vessel.



The Matonabee

This expedition vessel is ideal for spotting wildlife.

The Matonabee is a 70-foot catamaran touring cruise vessel. It features comfortable seats, large windows, spacious viewing decks, and a fully serviced galley, complete with espresso machine. Don't miss the unique views from the Matonabee's 12 underwater windows.

Enjoy the boat's ability to deploy rigid inflatable boats for exploration. Cruise along the coast of the Hudson Bay to places such as Seal River and Button Bay, a favorite gathering spot for polar bears.

Come aboard and join your naturalist guide for an amazing day of discovery in this remote and fascinating place.



The Arctic Crawler™

A rugged all-terrain vehicle.

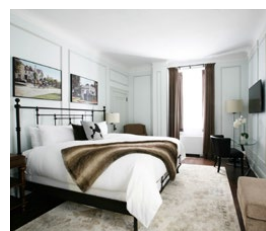
Get up-close access to the wildlife of the tundra aboard this specially designed trekking vehicle. The Arctic Crawler™ features comfortable seating, on-board facilities with flush toilet, large windows that lower for better viewing, and a spacious, fully grated outside rear deck for optimal photography opportunities. With the expertise of the driver and your Orbridge Expedition Leader, you will witness all the stunning natural beauty and diverse wildlife the tundra has to offer.



Your Accommodations (subject to change)

FORT GARRY HOTEL & SPA

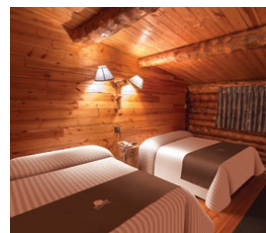
After an exciting day of exploration, retire to this landmark property in the heart of downtown Winnipeg, featuring high-tech amenities and a modern mix of contemporary style and Old World elegance.



LAZY BEAR LODGE

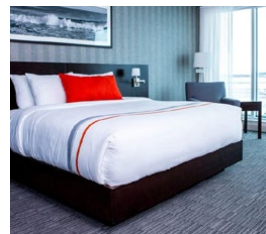
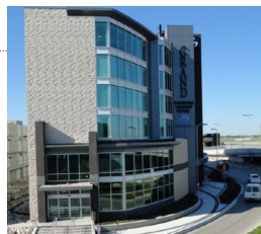
A log builder in a previous career, Wally Daudrich built the Lazy Bear Lodge himself, literally. Drawn to the area by its sense of freedom, Wally and a partner dragged fire-killed logs from the forest by snowmobile, crafting them first into a small café, then a small lodge, and finally the two-story, 15,000-square-foot, modern Lazy Bear Lodge of today.

Experience the warm hospitality of Wally and his staff, and dine on fabulous northern cuisine. You can see the gnarled and knotted log timbers from the northern Boreal forest used to make both the lodge and the furniture. It's the perfect combination of remote northern living with all the cozy comforts and conveniences travelers desire.



GRAND WINNIPEG AIRPORT HOTEL

Located next to the Winnipeg airport terminal, this boutique property provides beautifully appointed accommodations and thoughtful amenities. The hotel's restaurant, Blue Marble, uses locally produced ingredients to create an unforgettable dining experience.



Your Orbridge Expedition Leader:

The company and keen eyes of an expert Orbridge Expedition Leader will make all the difference in your educational experience. Enriched by their wealth of expertise, you'll bring home a deeper understanding of the flora, fauna, natural history, and cultural narrative of the diverse Canadian Arctic.

Orbridge