

# THE BEST STYLES OF THE INDUSTRY



## TOP-SELLING BLANKS

FOR CUSTOMIZATION



HOODIES &  
SWEATSHIRTS



T-SHIRTS



COLORS THAT  
SELLS



MADE TO  
PERFORM



INDUSTRY  
BESTSELLERS



50+ COLORS  
TO CHOOSE



PREMIUM QUALITY  
YOU CAN TRUST



READY FOR  
YOUR BRAND



**64000L**  
**Ladie's Softstyle® Fitted TShirt**  
**(G640L)** SIZES: S - 3XL

**12 LADIE'S AVAILABLE COLORS**



**64000B**  
**Youth Softstyle® TShirt (G640B)**  
SIZES: XS - XL

**22 YOUTH AVAILABLE COLORS**



# 64000

## Adult Softstyle® TShirt (G640)

SIZES: S - 5XL

### 65 AVAILABLE COLORS



### HEATHER COLORS



Perfect balance of  
softness, printability  
and price.

**GILDAN®**  
Softstyle®

UP TO  
**5X**

**DTG**  
FAV

T-SHIRTS



Screen Printing ★★★★★ (Best choice)  
DTG Printing ★★★★★ (Excellent details)  
Heat Transfer ★★★★★☆ (Use proper settings)  
Embroidery ★★★★★☆ (Stabilizer recommended)

- 4.5 oz./yd<sup>2</sup> (US) 7.5 oz./L yd (CA), 100% ring-spun cotton, 30 singles
- Antique colors & Sport Grey are 90/10 cotton/polyester
- Dark Heather & Heather colors are 65/35 polyester/cotton
- Graphite Heather is 50/50 cotton/ polyester
- Modern classic fit
- Narrow width, rib collar
- Taped neck and shoulders for comfort and durability
- Tear away label

OEKO-TEX®  
CONFIDENCE IN TEXTILES  
STANDARD 100



Sedex





Classic fit



Semi-fitted



# 5000B

## Youth Heavy Cotton™ TShirt (G500B)

SIZES: XS - XL

### 51 YOUTH AVAILABLE COLORS



### HEATHER COLORS



# 5000L

## Ladie's Heavy Cotton™ TShirt (G500L)

SIZES: S - 3XL

### 26 LADIE'S AVAILABLE COLORS



### HEATHER COLORS



- Screen Printing ★★★★★ (Best choice)
- DTG Printing ★★★★★☆ (Good results)
- Heat Transfer ★★★★★ (Highly reliable)
- Embroidery ★★★★★ (Ideal support)

# 5000

## Adult Heavy Cotton™ TShirt (G500)

SIZES: S - 5XL

**GILDAN®**  
Heavy Cotton™

UP TO  
**5X**

T-Shirts

### 75 AVAILABLE COLORS

WHITE	OFF WHITE	NATURAL	SAND
ICE GREY	GRAVEL	CHARCOAL	TWEED
LIGHT BLUE	SKY	CAROLINA BLUE	BLACK
INDIGO BLUE	SAPPHIRE	NEON BLUE	ROYAL
TROPICAL BLUE	ANTIQ SAPPHIRE	NAVY	BLUE DUSK
AQUATIC	ANTIQUADE DOME	MIDNIGHT	FOREST GREEN
MINT GREEN	ELECTRIC GREEN	IRISH GREEN	ANTIQU IRISH GRN
NEON GREEN	LIME	KIWI	MILITARY GREEN
SAFETY GREEN	CORNSILK	YELLOW HAZE	OLD GOLD
DAISY	GOLD	TENNESSEE ORANGE	BROWN SAVANA
SUNSET	SAFETY ORANGE	TEXAS ORANGE	RUSSET
TANGERINE	ORANGE	ANTIQU ORANGE	DARK CHOCOLATE
DUSTY ROSE	CORAL SILK	RED	ANTIQU CHERRY RED
LIGHT PINK	SAFETY PINK	CARDINAL	GARNET
AZALEA	HELICONIA	BERRY	MAROON
VIOLET	LILAC	PURPLE	BLACKBERRY

### HEATHER COLORS

ASH	SPORT GREY	GRAPHITE HTR	DARK HTR
HTR SAPPHIRE	COBALT HTR	HTR NAVY	HTR MILITARY GREEN
TURF GREEN HTR	HTR RADIANT ORCHID	HTR RED	



- 5.3 oz./yd<sup>2</sup> (US) 8.8 oz./L yd (CA) 100% cotton, 20 singles
- Blackberry, Dark Heather, Graphite Heather, Heather Colors, Lilac, Midnight, Neon Colors, Safety Colors, Sunset, & Tweed are 50/50 cotton/polyester
- Antique colors & Sport Grey are 90/10 cotton/polyester
- Ash Grey is 99/1 cotton/polyester
- Safety Green is compliant with ANSI / ISEA 107 high-visibility standards
- Classic fit
- Rib collar
- Taped neck and shoulders for comfort and durability
- Tear away label

OEKO-TEX®  
CONFIDENCE IN TEXTILES  
STANDARD 100

WORLDWIDE RESPONSIBLE  
WRAP  
ACCREDITED PRODUCTION

Sedex®

FAIR LABOR  
ASSOCIATION

Classic fit



Side seamed  
Contoured fit  
Classic fit



# ATC1000Y

## Youth Cotton Tee

SIZES: XS - XL

### 39 YOUTH AVAILABLE COLORS

WHITE	CHARCOAL	BLACK	TEAM NAVY
LIGHT BLUE	AQUATIC BLUE	SAPPHIRE	TRUE ROYAL
ROYAL	NAVY	DARK GREEN	KELLY GREEN
LIME	NEON GREEN	NEON YELLOW	YELLOW
GOLD	ORANGE	NEON PINK	CANDY PINK
TEAM RED	RED	MAROON	SANGRIA
PALE BLUSH	LAVENDER	PURPLE	TEAM PURPLE
..... HEATHER COLORS .....			
ASH	ATHLETIC HTR	DARK HTR GREY	TEAM DARK HTR
OATMEAL HTR	NEON BLUE HTR	HTR ROYAL	HTR NAVY
NEON ORANGE HTR	HTR RED	HTR PURPLE	

# ATC1000L

## Ladie's Cotton Tee

SIZES: XS - 4XL

### 30 LADIE'S AVAILABLE COLORS

WHITE	CHARCOAL	BLACK	NAVY
LIGHT BLUE	AQUATIC BLUE	SAPPHIRE	ROYAL
TRUE CELADON	LAUREL GREEN	KELLY GREEN	TEAL
LIME	YELLOW	GOLD	ORANGE
PALE BLUSH	CANDY PINK	SANGRIA	MAROON
LAVENDER	PURPLE	RED	
..... HEATHER COLORS .....			
OATMEAL HTR	ASH	ATHLETIC HTR	DARK HTR GREY
HTR RED	HTR ROYAL	HTR NAVY	

# ATC1000

## Everyday - Cotton Tee

SIZES: S - 6XL

ATC™  
EVERYDAY  
COLLECTION

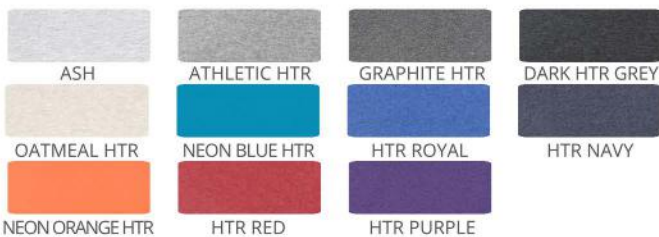
UP TO  
6X

T-Shirts

### 62 AVAILABLE COLORS



### HEATHER COLORS



OEKO-TEX®  
CONFIDENCE IN TEXTILES  
STANDARD 100

Screen Printing ★★★★★ (Best choice)  
DTG Printing ★★★★★☆ (Good results)  
Heat Transfer ★★★★★ (Highly reliable)  
Embroidery ★★★★★☆ (Good support)

- 9.1-oz, 100% cotton
- Compacted yarns to minimize shrinkage
- Taped neck and shoulders for comfort and durability
- Tear away label for private branding
- Double needle cover stitch at sleeve and bottom hem 1x1 rib knit collar
- Classic fit
- 90% cotton/10% polyester : Athletic Heather
- 50% cotton/50% polyester : Dark Heather Grey, Graphite Heather, Heather Navy, Heather Purple, Heather Red, Heather Royal, Neon Blue Heather, Neon Green, Neon Orange Heather, Neon Pink, Neon Yellow, Safety Green, Safety Orange
- 98% cotton/2% polyester : Ash Grey, Oatmeal Heather



# GILDAN® Heavy Blend™



UP TO  
**5X**

Sweatshirt

## 18000B Youth 50/50 Fleece Crew (G180B) SIZES: XS - XL

### 10 YOUTH AVAILABLE COLORS



- 8 oz./yd<sup>2</sup> (US) 13.3 oz./L yd (CA), 50/50 cotton/polyester, 20 singles
- Heather Dark Green, Heather Dark Maroon, Heather Dark Navy, Heather Deep Royal and Heather Scarlet Red are 60/40 polyester/cotton
- Safety Green is compliant with ANSI / ISEA 107 high-visibility standards
- The Heavy Blend collection is now made with finer yarns and new MVS Air spinning technology, that improves the fabric by reducing pilling, enhancing durability and creating a smoother printing surface.
- Classic fit
- 1x1 rib with spandex for enhanced stretch and recovery
- Tear away label
- Youth : CPSIA Tracking Label Compliant

## 18000 Adult 50/50 Fleece Crew (G180) SIZES: XS - 5XL

### 34 AVAILABLE COLORS



Screen Printing ★★★★★ (Best choice)  
 DTG Printing ★★★☆☆ (Good results)  
 Heat Transfer ★★★★★ (Highly reliable)  
 Embroidery ★★★★★ (Excellent support)



UPTO  
**5X**



# 996MR

## Adult NuBlend® Fleece Pullover Hooded Sweatshirt

SIZES: S - 5XL

### 41 AVAILABLE COLORS



- Screen Printing ★★★★★ (Best choice)
- DTG Printing ★★★☆☆ (Good results)
- Heat Transfer ★★★★★ (Highly reliable)
- Embroidery ★★★★★ (Excellent support)



996MR

**JERZEES®**

Sweatshirt

- 8 oz./yd<sup>2</sup> (US), 13.3 oz./L yd (CA), 50/50 cotton/polyester
- Oxford is 48/52 cotton/polyester
- Pre-shrunk
- NuBlend® pill-resistant fleece
- High-stitch density for a smooth printing canvas
- 2-ply hood with grommets and matching drawcord
- Double-needle stitched neck, armholes, and waistband
- Front Pouch pocket
- 1x1 ribbed cuffs and waistband with spandex
- Quarter-turned
- Tear away label
- Youth : CPSIA Tracking Label Compliant
- Youth : No drawcord



## 996YR Youth NuBlend® Hooded Sweatshirt

SIZES: S - XL

### 10 AVAILABLE COLORS



ASH



ATHLETIC  
HEATHER



BLACK



BLACK  
HEATHER



TRUE RED



OXFORD



DEEP  
PURPLE



ROYAL



J. NAVY



NEON PINK

# JERZEES®

## 995MR

### Nublend® Cadet Collar Quarter-Zip Sweatshirt

SIZES: S - 3XL

#### 12 AVAILABLE COLORS



- 8 oz./yd<sup>2</sup>, 13.36 oz L yd (CA), 50/50 cotton/polyester
- Oxford is 48/52 cotton/polyester
- Pre-shrunk
- Nublend®Spill-resistant fleece
- High stitch density for a smooth printing canvas
- Concealed 7" aluminum zipper
- Double-needle coverstitched armholes and waistband
- Seamless body with set-in sleeves
- 1x1 ribbed cuffs and waistband with spandex
- Quarter-turned



Screen Printing	★★★★★	(Best choice)
DTG Printing	★★★☆☆	(Good results)
Heat Transfer	★★★★★	(Highly reliable)
Embroidery	★★★★★	(Excellent support)

UP TO  
3X

Sweatshirt



# 562MR

## Adult NuBlend® Fleece Crew

SIZES: S - 5XL

### 31 AVAILABLE COLORS



- 8 oz./yd<sup>2</sup> (US), 13.3 oz./L yd (CA), 50/50 cotton/polyester
- Oxford is 48/52 cotton/polyester
- Pre-shrunk
- NuBlend® pill-resistant fleece
- High-stitch density for a smooth printing canvas
- Seamless body with set-in sleeves
- 1x1 ribbed collar, cuffs and waistband with spandex
- Double-needle stitched collar, armholes, and waistband
- Concealed seam on cuffs
- Quarter-turned
- Tear away label



JERZEES®

Sweatshirt



Screen Printing	★★★★★	(Best choice)
DTG Printing	★★★★☆	(Good results)
Heat Transfer	★★★★★	(Highly reliable)
Embroidery	★★★★★	(Excellent support)



# 6030

## 5 Panel Mid Profile Structured Cotton Blend Trucker Cap

SIZES: O/S

22 AVAILABLE COLORS



ADJUSTABLE SNAPBACK



BROWN-KHAKI



WHITE



HEATHER GREY-WHITE



KHAKI-WHITE



KHAKI



KHAKI-BROWN



CHARCOAL-WHITE



NAVY



NAVY-WHITE



NAVY-CHARCOAL



CHARCOAL-NAVY



CHARCOAL



CHARCOAL-BLACK



BLACK



BLACK-WHITE



BLACK-CHARCOAL



OLIVE-BLACK



OLIVE



FOREST



HOT PINK-BLACK



CARDINAL-BLACK



ROYAL-BLACK

The Classic 5 Panel Retro Trucker hat features 1 solid front panel and 4 rear mesh panels. It has a cotton sweatband, a pre-curved bill and is finished with a plastic snap closure.

- Screen Printing ★★★★★ (Front panel only)
- DTG Printing ★☆☆☆☆ (Not recommended)
- Heat Transfer ★★★★★ (Use cap heat press)
- Embroidery ★★★★★ (Best choice)

- Fabric: 60% Cotton, 40% Polyester/100% Polyester mesh back
- Closure: Plastic Snapback
- Fit: One Size Fits Most
- Panels: 5
- Crown: Mid; Structured
- Visor: Curved

# ID600

## 20L Jumbo Heavy Canvas Zippered Tote bag



SIZES: O/S

### 3 AVAILABLE COLORS



Screen Printing	★★★★★	(Best choice)
DTG Printing	★★★★☆	(Very good results)
Heat Transfer	★★★★★	(Highly reliable)
Embroidery	★★★★★	(Excellent support)

- 12 oz./yd<sup>2</sup> , 100% Cotton Heavy cotton Canvas.
- Full length
- Top inside zippered pocket.
- 25" Long self-fabric handles.
- Squared-off bottom.
- Reinforced at stress points.
- 11" handle drop
- Measurements 18"W x 14"H x 5"D

# 6021

## 6 Panel Mid Profile Structured Cotton Blend Trucker Cap



SIZES: O/S

34 AVAILABLE COLORS



ADJUSTABLE SNAPBACK



LODEN-BLACK



WHITE

HEATHER GREY-WHITE

HEATHER GREY-GREY

HEATHER GREY-BLACK

GREY

BLACK-GREY-WHITE

CHARCOAL-WHITE

WHITE-NAVY

NAVY-WHITE

NAVY

NAVY-CHARCOAL

CHARCOAL-NAVY

CHARCOAL

CHARCOAL-BLACK

KHAKI

LODEN

OLIVE-KHAKI

OLIVE

OLIVE-BLACK

FOREST GREEN

MOSS

WHITE

BROWN-KHAKI

MAROON

GREY-BLACK

BLACK-CHARCOAL

BLACK-WHITE

BLACK

CARDINAL RED

CARDINAL-BLACK

HOT PINK-BLACK

ROYAL-BLACK

ROYAL

The Classic Trucker cap combines style, quality and comfort you've come to expect from Decky. It features stitched eyelets, a cotton sweatband and an adjustable plastic snapback closure for the perfect fit.

- Fabric: 60% Cotton/40% Polyester (100% polyester mesh back)
- Closure: Adjustable
- Plastic Snap
- Fit: One Size Fits Most
- Panels: 6
- Crown: Mid; Structured
- Visor: Curved

Screen Printing	★★★★☆	(Front panel only)
DTG Printing	★☆☆☆☆	(Not recommended)
Heat Transfer	★★★★☆	(Use cap heat press)
Embroidery	★★★★★	(Best choice)



## ATCY2500 Youth Cotton Tee

SIZES: S - XL

### 19 YOUTH AVAILABLE COLORS



- 13-oz, 50/50 cotton/polyester fleece
- RING SPUN cotton
- 3-end fleece
- Compacted yarns to minimize shrinkage
- Double lined hood with drawstring
- Crossover neckline
- Silver metal drawstring grommets
- Pouch pocket
- Rib knit cuffs and waistband
- Anti-pill
- Classic fit
- \*Youth no drawstring



## ATCF2500 Fleece Hooded Sweatshirt

SIZES: S - 4XL

### 26 AVAILABLE COLORS



- |                 |       |                     |
|-----------------|-------|---------------------|
| Screen Printing | ★★★★★ | (Best choice)       |
| DTG Printing    | ★★★★☆ | (Good results)      |
| Heat Transfer   | ★★★★★ | (Highly reliable)   |
| Embroidery      | ★★★★★ | (Excellent support) |

# 6606

## Adult Retro Trucker Cap



SIZES: O/S

### 48 AVAILABLE COLORS



ADJUSTABLE SNAPBACK



BLACK



- WHITE
- SILVER
- HEATHER GREY WHITE
- HEATHER GREY BLACK
- CHARCOAL WHITE
- CHARCOAL NEON GREEN
- CHARCOAL NEON ORANGE
- CHARCOAL BLACK
- CHARCOAL
- CHARCOAL NAVY
- TURQUOISE WHITE
- STEEL BLUE SILVER
- ROYAL WHITE
- NAVY-WHITE NAVY
- NAVY WHITE
- NAVY SILVER
- NAVY
- DARK HEATHER GREY
- BLACK-WHITE BLACK
- BLACK WHITE
- PINK
- RUSTIC ORANGE KHAKI
- TRUE RED WHITE
- TRUE RED BLACK
- RED
- CRANBERRY
- MAROON GREY
- BROWN KHAKI
- MOSS KHAKI
- EVERGREEN WHITE
- KHAKI
- CAMEL
- CAMEL BLACK
- COYOTE BROWN BLACK
- VEIL WIDELAND
- POSEIDON BLACK
- REALTREE MAX7 BROWN
- MULTICAM TROPIC-GREEN
- GREEN CAMO BLACK
- MULTICAM BLACK BLACK
- MULTICAM ALPINE-WHITE
- MULTICAM ARID TAN
- MULTICAM ARID BROWN
- MULTICAM GREEN-KHAKI
- MULTICAM GREEN-BLACK
- MULTICAM BLACK
- REALTREE EDGE BROWN

- 74/26 polyester/cotton
- Camo is 85/15 polyester/cotton
- Multicam is 60/39/1 polyester/cotton/spandex
- Kryptek and Veil are 100% polyester
- Mesh back
- Structured, six-panel, mid-profile
- Permacurv® visor
- Camo and Multicam have a black undervisor
- Heather/Black & Heather/White have grey underversors
- Kryptek and Veil have a silver undervisor and the YP our-bar logo on the wearer's right side of the cap
- Snapback closure

Screen Printing	★★★★☆	(Front panel only)
DTG Printing	★☆☆☆☆	(Not recommended)
Heat Transfer	★★★★☆	(Use cap heat press)
Embroidery	★★★★★	(Best choice)

**GILDAN®**  
DryBlend®

UP TO  
**5X**

# 8000

## Adult 50/50 TShirt (G800)

SIZES: S - 5XL

### 41 AVAILABLE COLORS



### HEATHER COLORS



Screen Printing ★★★★★ (Best choice)  
 DTG Printing ★★★☆☆ (Limited details)  
 Heat Transfer ★★★★★ (Highly reliable)  
 Embroidery ★★★★★ (Strong support)

# 8000B

## Youth 50/50 TShirt (G800B)

SIZES: XS - XL



### 21 YOUTH AVAILABLE COLORS



- 5.5 oz./yd<sup>2</sup> (US) 9.2 oz./L yd (CA), 50/50 cotton/polyester, 20 singles
- Heather Dark Navy, Heather Deep Royal and Heather Scarlet Red are 65/35 polyester/cotton
- Safety Green is compliant with ANSI / ISEA 107 high-visibility standards (applies to the US site only)
- Classic fit
- Classic width, rib collar
- Taped neck and shoulders for comfort and durability
- Tear away label

# ATC™ PRO TEAM



Classic fit



Contoured fit



## Y350 SIZES: XS - XL Youth Short Sleeve Tee

### 20 YOUTH AVAILABLE COLORS



## L350 SIZES: S - 4XL Ladie's Short Sleeve Tee

### 15 LADIE'S AVAILABLE COLORS



**ATC™  
PRO TEAM**

**UPTO  
4X**

Classic fit



**S350L** SIZES: XS - 4XL  
**Long Sleeve Tee**

**10 AVAILABLE COLORS**



- 6.3-oz, 100% performance polyester interlock with wicking technology
- No Bleed Fabric (NBF) created with a unique cationic dye process for easy printing
- Side seamed Breathable
- Tagless
- Classic fit
- Due to the nature of polyester, special care must be taken throughout the decoration process.



**S350** SIZES: S - 4XL  
**Short Sleeve Tee**

**19 AVAILABLE COLORS**



Screen Printing	★★★★☆	(Poly ink required)
DTG Printing	★★☆☆☆	(Not recommended)
Heat Transfer	★★★★☆	(Use low-temp)
Embroidery	★★★★☆	(Ideal support)

# ATC5050

## Cotton Blend Tee

SIZES: S - 6XL

### 21 ADULT & YOUTH AVAILABLE COLORS



# ATC5050Y

## Cotton Blend Tee

SIZES: XS - XL



- 9.1-oz, 50/50 cotton/polyester
- Compacted yarns to minimize shrinkage
- Comfort Dry fabric blend offers breathability and wicks moisture away from the skin
- Made with up to 5% post-consumer recycled polyester from plastic bottles
- Taped neck and shoulders for comfort and durability
- Tear away label for private branding
- Double needle cover stitch at sleeve and bottom hem
- 1x1 rib knit collar
- Classic fit
- \*98/2 cotton/polyester
- Due to the nature of 50/50 cotton/polyester neon fabrics, special care must be taken throughout the decoration process.
- Available colors with Fabric: \*90% cotton/10% polyester : Ash Grey

Screen Printing	★★★★★	(Best choice)
DTG Printing	★★★☆☆	(Limited details)
Heat Transfer	★★★★★	(Highly reliable)
Embroidery	★★★★★	(Clean stitching)



# SP12

## 12" Solid Cuffed Beanie

SIZES: O/S

### 30 AVAILABLE COLORS



DARK HEATHER GREY

### HEATHER COLORS



- 100% acrylic
- Grey Camo & Green Camo are 95/5 acrylic/elastane
- Heather Grey is 62/38 acrylic/polyester
- All other Heather colors are 50/50 acrylic/polyester
- Adjustable cuff, shown as 3"
- Socially Conscious Manufacturing: This product was made in a facility that utilizes the Higg Index and has implemented Level 2 practices or above and was made in a facility that is WRAP certified.

Screen Printing	★★★★☆	(Limited area)
DTG Printing	★☆☆☆☆	(Not recommended)
Heat Transfer	★★★★☆	(Use low heat)
Embroidery	★★★★★	(Best choice)



## L0550Y

### Vault - Youth Pullover Hooded Sweatshirt

SIZES: XS - XL

## L00550

### Vault - Adult Pullover Hooded Sweatshirt

SIZES: XS - 4XL

#### 21 AVAILABLE COLORS



Screen Printing ★★★★★ (Best choice)  
 DTG Printing ★★★★★ (Excellent detail)  
 Heat Transfer ★★★★★ (Highly reliable)  
 Embroidery ★★★★★ (Excellent support)

- 280 gsm - 8.3 oz./yd<sup>2</sup> - 14 oz./lin. yd (solids) 70% ring spun combed cotton, 30% polyester fleece (heathers) 60% ring spun combed cotton, 40% polyester fleece.
- Self fabric lined hood with drawcord.
- 100% ring spun combed cotton face for superior print surface.
- Rib knit cuff and hem.
- Kangaroo pocket.
- Tear away label.
- DTG - direct to garment printer friendly.
- Youth no drawcord

# C100

## Adult Knit Cuff Toque

SIZES: O/S

### 23 AVAILABLE COLORS



# Y100

## Youth Knit Cuff Toque

SIZES: O/S

### 6 YOUTH AVAILABLE COLORS



- 100% acrylic
- 3 folding cuff
- 1x1 rib knit
- \*68/32 polyester/acrylic
- \*\*54/46 polyester/acrylic
- \*\*\*53/47 acrylic/polyester

Available colors with Fabric:

- \*90% cotton/10% polyester : Athletic Oxford
- \*\*50% cotton/50% polyester : Black Heather
- \*\*\*98% cotton/2% polyester : Oatmeal Heather

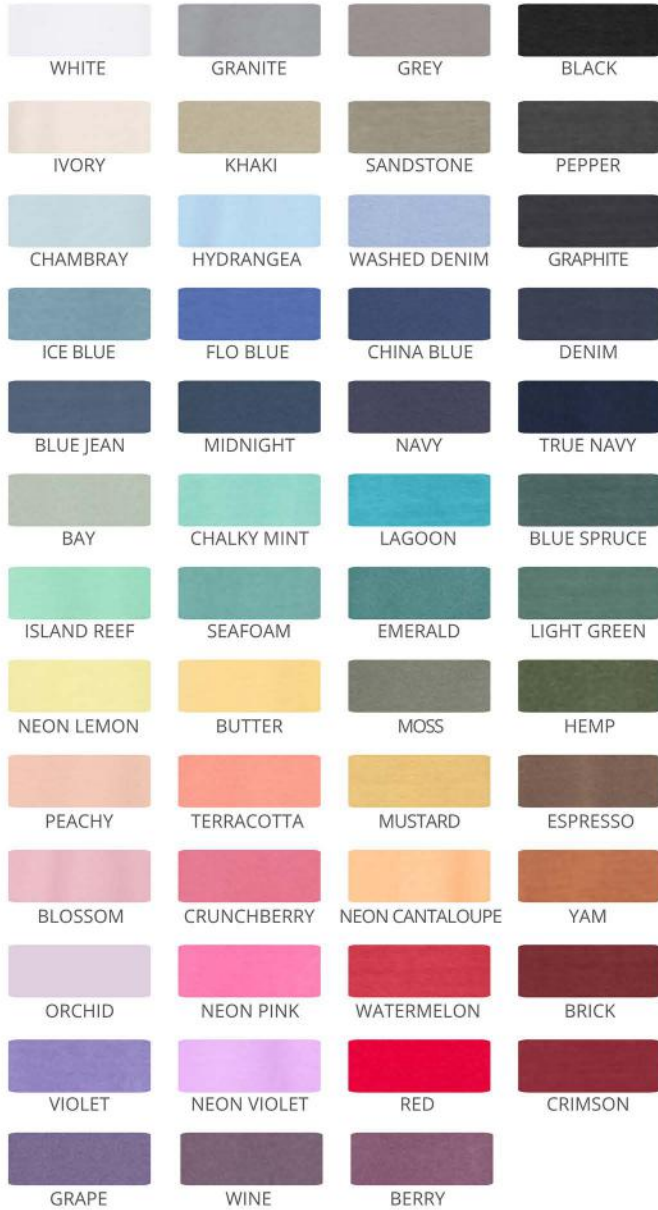
Screen Printing	★★★★☆	(Limited area)
DTG Printing	★☆☆☆☆	(Not recommended)
Heat Transfer	★★★★☆	(Use low heat)
Embroidery	★★★★★	(Best choice)

# C1717

## Adult Heavyweight TShirt (1717)

SIZES: S - 4XL

### 51 AVAILABLE COLORS



- |                 |       |                       |
|-----------------|-------|-----------------------|
| Screen Printing | ★★★★★ | (Best choice)         |
| DTG Printing    | ★★★★☆ | (Very good results)   |
| Heat Transfer   | ★★★★★ | (Use proper settings) |
| Embroidery      | ★★★★☆ | (Excellent support)   |

COMFORT COLORS®  
Heavyweight

UP TO  
4X

T-Shirts



- 6.1 oz./yd<sup>2</sup> (US), 10 oz./L yd (CA), 100% ring-spun cotton, 30 singles
- Garment-dyed for that lived in feel and almost no shrinkage at home.
- Soft ring-spun cotton fabric with 100% cotton threads
- Relaxed fit
- Topstitched, classic width, rib collar
- Shoulder to shoulder twill tape
- Signature twill label
- Made With Respect
- Our clean pigment dye colors are salt free



# 3001

## Unisex Jersey TShirt (3001)

SIZES: XS - 5XL

**BELLA+CANVAS.**  
Airlume Jersey

UP TO  
**5X**

T-Shirts

### 79 AVAILABLE COLORS



- 4.2 oz./yd<sup>2</sup> (US) 7 oz./L yd (CA), 100% Airlume combed and ring-spun cotton, 32 singles
- Ash is 99/1 Airlume combed and ring-spun cotton/polyester
- Pre-shrunk
- Retail fit
- Unisex sizing
- Coverstitched collar and sleeves
- Shoulder-to-shoulder taping
- Side seams
- Tear away label

Screen Printing ★★★★★ (Best choice)  
 DTG Printing ★★★★★ (Excellent details)  
 Heat Transfer ★★★★★☆ (Great results)  
 Embroidery ★★★★★☆ (Stabilizer recommended)

**bluesign**<sup>®</sup>  
APPROVED

# 3001CVC

## Unisex Heather CVC TShirt

SIZES: XS - 5XL

### 72 AVAILABLE COLORS



Screen Printing	★★★★★	(Best choice)
DTG Printing	★★★★☆	(Very good details)
Heat Transfer	★★★★★	(Highly reliable)
Embroidery	★★★★☆	(Stabilizer recommended)

**BELLA+CANVAS**  
Airlume Jersey

UP TO  
**5X**

T-Shirts



- 4.2 oz./yd<sup>2</sup> (US) 7 oz./L yd (CA), 52/48 Airlume combed and ring-spun cotton/polyester, 32 singles
- Athletic Heather & Black Heather are 90/10 Airlume combed and ring-spun cotton/polyester
- Heather Prism colors are 99/1 Airlume combed and ring-spun cotton/ polyester (Unique coloring, grey flecks of heather pulled through the base color)
- Pre-shrunk
- Retail fit
- Unisex sizing
- Coverstitched collar and sleeves
- Shoulder-to-shoulder taping
- Side seams
- Tear away label



# 4800

## Gold Soft Touch T-Shirt

SIZES: XS - 5XL

### 51 AVAILABLE COLORS



### HEATHER COLORS



Screen Printing ★★★★★ (Best choice)  
 DTG Printing ★★★★★ (Excellent detail)  
 Heat Transfer ★★★★★☆ (Great results)  
 Embroidery ★★★★★☆ (Use stabilizer)



M&O<sup>®</sup>  
T-shirts

UP TO  
5X

DTG  
FAV

T-Shirts



- 5 oz./yd<sup>2</sup> (US) 8.1 oz./L yd (CA), 100% cotton preshrunk jersey, 23 singles
- Ash is 99/1 cotton/polyester
- Athletic Grey is 90/10 cotton/polyester (US only)
- Sport Grey is 90/10 cotton/polyester (CA only)
- Heather & Safety colors are 50/50 cotton/polyester
- Taped neck and shoulders
- Double-needle sleeve and bottom hem
- Double-needle cover seamed neck
- Quarter-turned body
- Tear away label
- USMCA Certified

Classic fit



Classic fit with a feminine pattern. Narrow width rib collar.



## 2000B Youth Ultra Cotton® TShirt (G200B) SIZES: XS - XL

### 30 YOUTH AVAILABLE COLORS



## 2000L Ladies' Ultra Cotton® TShirt (G200L) SIZES: XS - 3XL

### 9 LADIE'S AVAILABLE COLORS



- Screen Printing ★★★★★ (Best choice)
- DTG Printing ★★★☆☆ (Fair results)
- Heat Transfer ★★★★★ (Highly reliable)
- Embroidery ★★★★★ (Excellent support)



# 2000 Adult Ultra Cotton® TShirt (G200)

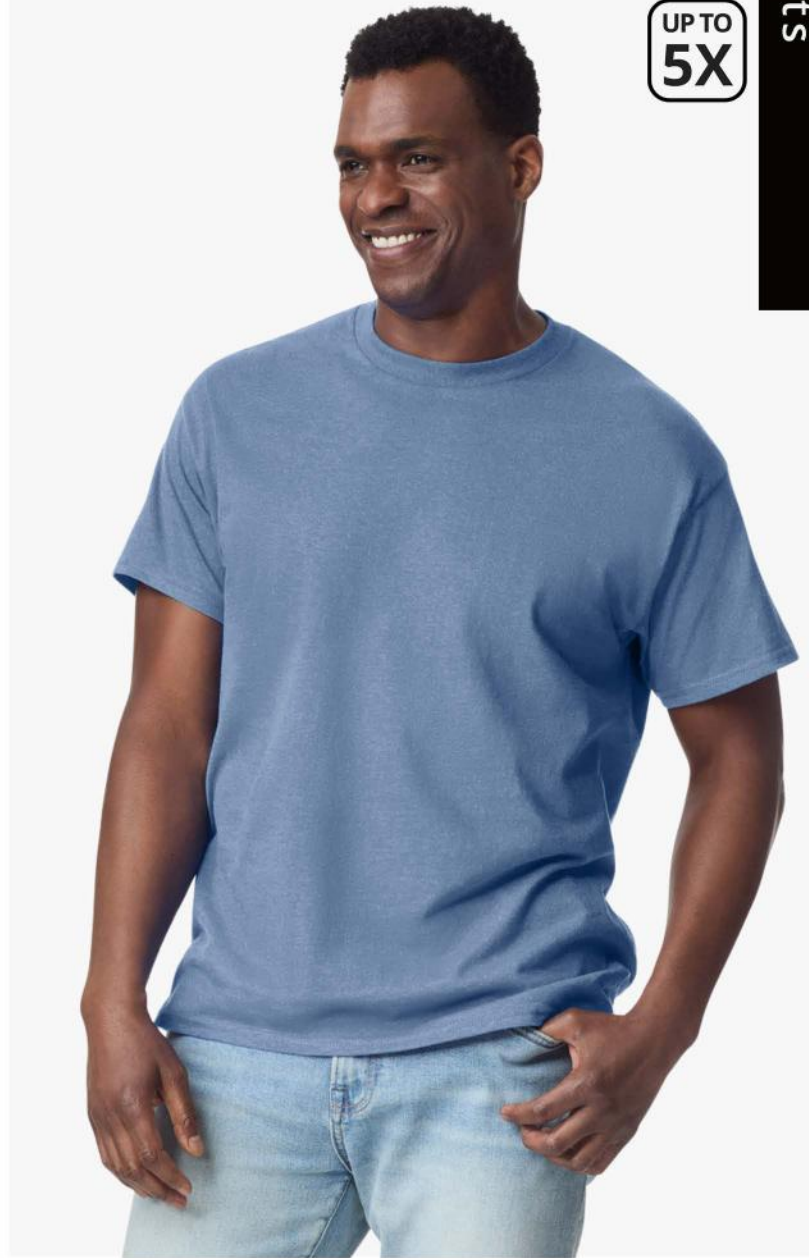
SIZES: S - 5XL

**GILDAN®**  
Ultra Cotton®

UP TO  
**5X**

T-Shirts

## 60 AVAILABLE COLORS



- 6 oz./yd<sup>2</sup> (US) 10 oz./L yd (CA), 100% cotton, 18 singles
- Ash Grey is 99/1 cotton/polyester
- Heather Colors & Safety Colors are 50/50 cotton/polyester
- Antique Colors & Sport Grey are 90/10 cotton/polyester
- Safety Green is compliant with ANSI / ISEA 107 high-visibility standards
- Classic fit
- Rib collar
- Taped neck and shoulders for comfort and durability
- Tear away label
- PFD White: 100% cotton with cotton thread
- No optical brighteners - allows for more consistent dye adherence.
- Increased body and sleeve lengths to accommodate shrinkage.