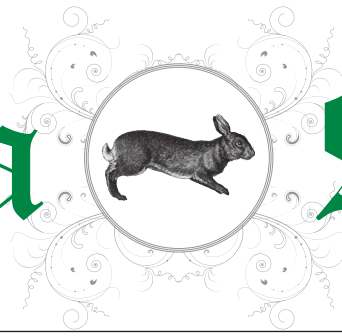


Winchelsea Star

Price \$1



Your Weekly Community Newspaper

Since 1977

Vol 45 Ed 43

Tuesday 1 November 2022

winchelseastar.org.au

Winchelsea's Imogen Grzemski in the World Field Archery Championships

See page 3







FARMERS ARMS HOTEL BEEAC

Quality...Service...Fair Prices...All Three All The Time



MELBOURNE CUP

Tuesday 1 November

- Prizes for Best Dressed & Best Hat
- Champagne Breakfast
- Lucky Door Prizes
- Cocktails



Book Now



farmersarmsbeeac

*Bookings Essential

87 Main Street Beeac
www.farmersarmsbeeac.com.au

5234 6341




ON WITH THE SHOW

A FESTIVE CABARET
SHORT PLAYS AND MUSIC
FEATURING *The Red Violets*


NOV. - 24, 25, 26.
7-30 pm. BIRREGURRA HALL
TICKETS ~ \$33
AT COWLICK BOOKSHOP
OR AT www.trybooking.com/CDBJV

Farmers, lease your land for passive Income



Lease your land for a solar farm and receive an additional passive income for 30 years and up to \$50,000 upon construction, all the while diversifying your income and increasing revenue

Call Jesse: (03) 4713 5709
jesse@bnrgleeson.com.au



We take care of
everything for you

Barwon River Reserve Adventure Play Space and Gathering Space Update



Design work for the adventure play space is expected to be completed by mid-November, with a tender process for construction of the works to follow in early 2023.

A Council-appointed contractor will also begin demolition works of the existing mud hut shelter in January next year, with the installation of the new shelter of the same approximate size to follow.

The natural colours and material chosen for the hut are sympathetic to the surrounding environment and reflect the feedback received during consultation on the shelter in May 2022.

For any queries regarding the project above, please email info@surfcoast.vic.gov.au.





Well done Imogen!

Early in October, Winchelsea resident, Imogen Grzemski 20, travelled to Yankton, South Dakota as the solo Women's recurve archer representing Australia in the World Field Archery Championships.

Most people are familiar with the Olympic sport, Target Archery, where archers shoot at a fixed target 70 meters from the archer. However, field archery is quite different. Field archery is shot over 2 days of 24 different targets, 10 to 60 meters from the archer at any angle up or down. Having to walk across terrain and climbing hills and ramps, it is quite a strenuous workout. On the first day, the field is unmarked, meaning the archers do not know how far away the target is from them. Not only do you have to guess the distance, but judge how much the target being lower or higher than you impact how you aim at the target. The second day, the distances are known.

After the unmarked and marked qualification rounds, Imogen was in seventh place. She then had a stellar elimination round, which included eliminating the current European Field Champion, Beatrice Miklos from Romania, and also the third seed Audrey Machinet from France. "Getting to the semi-finals exceeded all my expectations," said Imogen. In fact, Imogen was the only Australian competing for a medal on finals day, with the other Aussies making a very vocal cheer squad. In her semi-final, Imogen was beaten by Roberta DiFrancesco, one of the highly talented Italian team (who went on to win gold and silver) putting her in the bronze medal match. Imogen shot extremely well on the four Finals targets, including one that was over 20 meters up in the trees and one



that was down in a gully. However, the current UK champion prevailed, and Imogen ended in fourth place. This was the highest ranking by an Australian woman at the history of the world field championships.

"Even though I grew up in the United States, it was always my dream to represent Australia in archery", said Imogen. "My younger self would be so happy with how I went. I am extremely grateful for the support I received from the local community. Especially to Robyn Black who organized a bake sale, raffle and having the Lions Club for a Sausage

Sizzle at IGA. I would like to thank Aleisha and Gabby at Emeraude Hair Salon, Amy from Soleil et La Luna, Justin and Henry from Otway Artisan, Melissa from Bohemian Glow, Winchelsea IGA and everyone who donated to help with the cost of attending. Thank you."

With the World Field Championships now over, Imogen is focussing on Target Archery, with a view to qualify for the World Cup selection camp early next year. Well done Imogen! We are all so proud of you!



Breeze Health and Wellness, Exercise Physiology 32-34 Main Street, Winchelsea (old post office)

Chronic disease? Injured? Wanting improved athletic performance?

We can help you manage, rehabilitate and prevent many common ailments through movement.

Speak with your GP about a referral for a care plan.

Private health accepted - no referral needed.

Call Brenton on 0428 790 023 to discuss or email breezehealthandwellness@gmail.com

Exercise is Medicine, Motion is Lotion. Move with Ease at Breeze.



Photography Competition JUNIORS



6-17 YEARS OLD

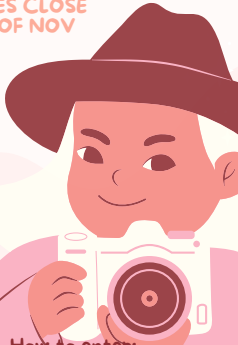
TAKE A PHOTO THAT REPRESENTS WINCHELSEA FOR YOUR CHANCE TO WIN!

8 FINALISTS WILL BE SHOWCASED DURING A WEEK LONG EXHIBITION AT THE SHIRE HALL. WINNERS WILL BE ANNOUNCED NOV 18TH.



ENTRIES CLOSE 4TH OF NOV

1ST PRIZE
2ND PRIZE
3RD PRIZE



How to enter:
growingwinchevents@gmail.com
or tag us on Instagram!
@gw_photo_comp

What's on in Winch

Winchelsea Hospital Auxiliary Op Shop

Please note due to flood damage the Op Shop is closed indefinitely. We apologise for any inconvenience.

Market in Winch

Market next Sunday
6th September 9am till 1pm.

THANK YOU

We sincerely like to thank everyone in this beautiful town of Winchelsea, for their care and kind support that you all have given us on the sad loss of John Bumford.
"God Bless to you all."

Olive, Timothy, Coralee, Robyn and Families.



Water Supply Specialists

WATER SOLUTIONS

74 Dennis Street, Colac
5231 1861



ALL THINGS WATER:

- PUMPS - PIPES
- FITTINGS - TANKS
- POOL CHEMICALS
- IRRIGATION
- WATER PURIFICATION
- SOLAR - REPAIR

Colac Ram Sale

60 Rams

White Suffolks, Poll Dorset & Suffolk Rams

Friday 11th November 2022

11.00am

Colac Showgrounds

Colin Beel 0448 430 568
James Breen 0429 402 445
Simon Cotter 0413 777 533



Winchelsea Taxis is now Surfcoast Taxis

Our fleet of vehicles are growing to all late models and we are covering an extended area including Winchelsea, Colac, Bannockburn, Inverleigh, Great Ocean Road and Geelong.

We have a fleet of 10 seater Maxi Vans, all with capacity to carry wheelchairs.

Surfcoast Taxis Pty Ltd
All Bookings: 0408 325 992
Fax: 5267 2699
Email: bannotaxis@gmail.com
(Admin or Stan 0429 672 888)
66A Batson Street
Winchelsea 3241



Accounts NDIS provider. TAC, DVA etc

NDIS provider number 4050001044
NDIS provider number 4050001048

Book your next ride with **smarHAIL**

Book Track Pay Rate

Download on the App Store GET IT ON Google Play

Op Shop opening

We are unable to receive donations until further notice!
Due to recent water damage the Op Shop has closed while repair work is completed.
Shop stock was unaffected but has been relocated.

10 am to 3pm

All proceeds to Hesse Hospital.



Winchelsea Kyokushin

Another successful tournament for Winchelsea Kyokushin!!

On Saturday the 15th of October, Winchelsea Kyokushin Karate Club headed off to Griffith, NSW to attend the 2022 Riverina Championships.

A big thank you to the Bendigo Bank Community bus for getting us all there safely in what was a challenging trip due to the unfortunate floods in our state.

The tournament was on the Sunday, results below:

- Cooper Paterson: 4th Non-contact, 5th Full-contact
- Rune D'Agostino: 3rd Non-contact, 2nd Full-contact
- Raina D'Agostino: 1st Non-contact, 1st Full-contact
- Cooper Winn: 4th Non-contact, 1st Full-contact
- Sia Lockie: 4th Non-contact
- Richard Lockie: 2nd Non-contact, 4th Full-contact
- Caiden Bradley: 4th Full-contact
- Charlie Wilson: 2nd Non-contact, 1st Full-contact

So, 4: 1st, 3: 2nd, and 1: 3rd , unbelievable effort by our students!

Special mention to Raina D'Agostino who was double champion, winning both the non-contact and full-contact for her age group.

Also, Charlie Wilson who won the full contact by knockout in 30 seconds (quickest of the day!), and Cooper Winn who continues his unbeaten start to his knockdown career (won 8 straight!).

Jess and I are very proud of all our students in what has been a big year for our little dojo.

That's it for 2022 for tournaments, however the students have 2 big gradings coming up in November.

And 2023 is shaping to be even bigger, with the World Cup being held in December 2023 in Chile.

Lets hope some Winch students get selected to represent us in that.



Shire suspends Road Management Plan to deal with flood and storm response

Surf Coast Shire Council is temporarily suspending its Road Management Plan to prioritise response to a large volume of flood-damaged roads, paths, bridges, landslips and fallen trees.

Heavy rainfall and storms during the past two weeks resulted in significant flooding across the shire, impacting infrastructure and contributing to tree falls.

Since 13 October Council has received more than 170 requests to repair road and drainage assets damaged by flooding.

Increased wind during the past weekend led to more than 30 requests to respond to large fallen trees.

Council inspectors are dealing with a significant increase in immediate work reviewing damaged roads, drains, bridges, trees and landslips before being able to resume proactive road inspections.

Several assets will need significant repairs.

"Given the volume of damage and the necessary diversion of resources, our Road Management Plan will be suspended until 21 November," Council's General Manager Community Life Gail Gatt said.

"This means Council's capacity to respond to enquiries and call-outs for issues like potholes and other routine road maintenance will be significantly reduced, and target response times in some cases doubled.

"We appreciate people's understanding and patience as we work through immediate priorities presented by the severe rain and storm events."

Council's Road Management Plan sets service standards for tending roads and other road-related assets including kerbs, footpaths, signs, drainage, bridges and vegetation.

Council's road network comprises 604km of sealed roads and 478km of unsealed roads and tracks.



Expressions of Interest sought for Barwon Water committee

Barwon Water is calling for customers passionate about the environment to express an interest to join an advisory committee that offers input and advice to Barwon Water as it provides its essential services.

Members on the EAC provide perspectives on how Barwon Water's works can continue to help protect and enhance the natural environment.

"If you're passionate about our region, the community, our environment and how water and essential services can have positive benefit in those areas, we want to hear from you.

The EAC will also benefit from the strong working relationships we have with Traditional Owner groups who have a unique responsibility to care for country and who share insights based on their deep cultural knowledge.

"We are looking to continue to collaborate with our community and

stakeholders on the development of strategies, programs and projects that optimise water-related resources for the environment and regional prosperity."

Membership is for a three-year period, after which time members will be invited

to reapply. Meetings will be conducted on a quarterly basis.

For more information, please visit www.yoursay.barwonwater.vic.gov.au/eac.

Applications are open now and close on November 20.

Winchelsea Men's Shed



For The Community

51 Hesse Street

Every Wednesday from 9:30am

New members always welcome

For more detail contact:
Ray Atkinson (Co-ordinator)
0407 839 139

or
winchmensed@gmail.com

Need a job done?
Woodworking jobs,
furniture repairs, small jobs.
Drop in and talk to us.



mainly music est. 1990

Fun, Interactive music sessions for pre-school children (0-4 y.o.) and parents/caregivers

When: Mondays from 10 to 11 am (runs during school terms)

*Where: St Thomas' Hall
25 Barwon Tce.*

To Enquire ring: 0407838256



Made for more possibilities



Victoria Police is made for ambitious people looking for a career with more challenges, excitement, purpose, and possibilities.

Q [police careers](#)

Authorised by the Victorian Government, 1 Treasury Place, Melbourne



MADE FOR MORE

Winchelsea Primary School

Students put their imaginations to good use

This term, the students in the middle learning community have been using their imagination to create new or everyday objects from boxes after being inspired by this idea from one of their Term 3 mentor text titled "Not a Box!"

'Not a Box!' tells the story of a young rabbit who is convincing the narrator that he is in fact, not playing with a regular cardboard box but instead, many spectacular things.

The main character imagines their 'not a box' (as they call it) to be a race car, a space ship, the peak of a mountain and many other wonderful things that their imagination comes up with.

The book reminds us of looking beyond what we see and using our imagination to open up possibilities and explore what thing COULD be!

We hope you enjoy some photos of our students alongside their 'not a box' creations. The MLC students certainly enjoyed sharing their creations at the exhibition they conducted for the whole school.



Winchelsea Star

Articles are most welcome and must carry the name and address of the sender.

Weekly deadline is 5pm Friday.

Copy for sports results and weekend events is Sunday 6pm (4pm for hard-copy articles/results left at IGA) unless by prior arrangement.

Copy should be emailed to news@winchelseastar.org.au or left at IGA Supermarket.

The Winchelsea Star reserves the right to edit or not publish any article.

Views expressed are not necessarily those of the Winchelsea Star or its Committee.

500 online subscribers, 250 copies printed for outlets around Winchelsea.

Free subscription to digital version at winchelseastar.org.au

© Winchelsea Star Org. Inc.
All rights reserved.

Winchelsea Star Organisation Inc.
Reg. No. A1479, ABN: 57 207 411 958
winchelseastar.org.au
Po Box 5, Winchelsea, Vic, 3241

Editors:

Cerrie Fogan, Yvonne Stevens
Judy Cameron
editor@winchelseastar.org.au

Advertising:

Sasha Gauntlett and Neil McInnes
advertising@winchelseastar.org.au
0408 102 802

Layout/Sub Editors:

Susan Corby, Charles Corby
Stuart Fountain
production@winchelseastar.org.au

Committee

President: Mick O'Mara
president@winchelseastar.org.au

Treasurer: Cathy Cheadle
treasurer@winchelseastar.org.au

Secretary: Tony Phelps
secretary@winchelseastar.org.au

Committee Members:
Linda Carter

Printer: Mud Group
Website: Winch Websites



HESSE RURAL HEALTH WINCH WALKERS

Please join us for a walk around Winchelsea each Wednesday at 9.30am
This is a free event and all are welcome
Whether you are new to the area or if you would like to reconnect with our community



Heart Foundation Walking Group

Where: MUD HUT- Barwon Terrace – opposite La Hoot

When: Wednesday at 9:30am – 10:30am (approx.)

Why: Walking is a terrific way to catch up with people and be active!

Cost: Free!

Walking routes are tailored to ensure they are accessible to everyone.

The Walking Group follows the Heart Foundation COVID safe guidelines.

For further information please call Raelene Alexander on 5267 1200 or email RAlexander@hesse.vic.gov.au



Kyeema
Rural Fencing Pty. Ltd.
Jason Armstrong & Jay Hawker
1080 Princes Lane, Ombersley, Victoria, 3241
0419 565085 (Jason)
0416 585817 (Jay)
kyeemafarm@kyeemafarm.com.au
Also incorporating domestic and rural tree trimming services.

Water Delivery

WAZZA'S
WATER CARTAGE

*Stainless Tanker Up to 22,000 ltr loads
Barwon Water Registered*

Domestic & Rural Water Supplies

Call Wazza
Mob: 0428 877 260
Email: wazza@wazzas.com.au Web: wazzaswater.com

Mowers & Chainsaws

Repairs to all makes and models of ride on mowers, domestic mowers, pumps, chainsaws, brushcutters and small engines.

Trading Hours: Mon - Fri 8am - 5pm Saturday 8am - 12 noon

5267 2266 Cnr Princes Hwy & Lennox St Winchelsea
www.allaboutmowers.com.au
accounts@allaboutmowers.com.au







Growing Winchelsea AGM

**You are invited to the
Growing Winchelsea
AGM
Shire Hall,
7pm Wed 16 Nov 2022**

President's report
Treasurer's report
Subcommittee reports:

- Arboretum Trail
- Movie Club
- Station Precinct Project
- Market
- Planning and Infrastructure

We seek nominations to the executive committee to anyone interested in the concerns of our growing town.

A big welcome to newcomers we are seeking volunteers with diverse skills and creative thinkers, in particular youth representation.

All Office bearing positions will be declared vacant and elections held for both committee positions and the executive.

The topic for discussion on the evening will be the ratification of Growing Winchelsea's 5 P's, the pillars which inform projects undertaken by the team - People, Place, Participation, Prosperity, Planet

GW with the support of SCS will commence a Community Plan so watch this space for how you can be involved in 2023.

Supper provided.



At the recent General meeting John Knuckey presented President of Growing Winchelsea, John Tebbutt with a cheque for \$4000.00 towards ongoing costs of the volunteer organisation.

Photo: Naida Hutton.

PHOTOGRAPHY CLUB



Photography group meets every Saturday 10:30 at various places throughout the Otway & Surfcoast region. Discover your inner photographer!

Please bring a camera of any kind or a phone. Whatever you can, to capture your favourite aesthetic.

The group officially starts the 12th of November at set location. Message me if you want to know where we would be meeting for the very first time! I will make a group chat so we can discuss locations

Bekkysendeavors@gmail.com or private message me on FB
I will get back to you within 24 hours

LIONS CLUB OF WINCHELSEA

PAPER RECYCLING

Paper depot rear of Senior Citizens Rooms Harding Street
NEWSPAPERS, MAGAZINES, PHONE BOOKS WANTED

SHEEP POO FOR SALE

\$5 per bag.
Available at paper depot rear of Senior Citizens Rooms Harding Street
most mornings between 10 and 12
or contact David on 0410 029 857.



RAISING FUNDS FOR OUR TOWN & DISTRICT
5267 2011 or 0408 520 606




CFA

Simco Plumbing and Gasfitting

24/7 Emergency service Ph:0400643976

- All General Plumbing and Gasfitting
- Roof and Gutters, Hot Water service changeover
- Split Systems, Air Conditioning and Wood Heaters
- Irrigation, Septic and Treatment plants
- Excavation, Bobcat and Tipper
- Rain water Tank installation
- Renovations and Extensions
- Gas conversions and servicing

Simon McGillivray
Lic:109610. Free quotes, Fast and friendly service



St Vincent de Paul Society
good works

Covering Meredith, Bannockburn, Anakie, Lethbridge, Inverleigh, Teesdale, Shelford, Elaine and Winchelsea

52219170

Monday - Friday 9am to 2 pm
<http://www.vinnies.org.au>

A caring Catholic organisation offering "a hand up" to all people in need.

MRP Steelworx

Matthew Partridge
p 0418 672 334
e mrpsteelworx@yahoo.com.au

Welding Service

- Onsite welding
- Farm maintenance
- Farm machinery & equipment repairs
- Cattle & sheep yards
- Custom built trailers
- Supply & install gates

**BUILDING?
RENOVATING?
NEW HOME?
EXTENSION?**

◆ **BUSHFIRE ASSESSMENTS**

◆ **6-STAR ENERGY RATINGS**

**BRUCE ST. CLAIR
0435 892 799**

CORPORATE MEMBER



Building Designers Association Victoria

OZ TREES NURSERY & TREE PLANTING SERVICES

- Affordable seedlings—over 200 species
- Complete plantation service—farm forestry, shelter, aesthetics
- Deep ripping & mound ploughing. Rotary bed forming
- Our experienced staff will help you select species for your site conditions and needs

Also available—tree planting tools, milk cartons, plastic tree guards & bamboo stakes

569 Warrowie Rd. Colac
P: 5233 6280 F: 5233 6393
E: info@oztrees.com.au
W: www.oztrees.com.au
Open Monday—Friday
9am—4:30pm



Phone OzTrees for professional advice,

COVID-19 Weekly Data

There were 8,537 COVID-19 cases reported in Victoria this week, an increase of 24.7 per cent on the previous week.

The number of active cases in Victoria also increased this week to 7,851, up from 5,915 at the same time last week.

In the past three months, there have been 1,100 COVID-19 related deaths in Victoria. Of those deaths, 49 per cent had not received their third COVID-19 vaccine dose. 440 (40 per cent) were unvaccinated

Antique Repairs

By **Doug Burns** est. 1976

- All Furniture
- French polishing
- Carving
- Veneering
- Wood Turning
- Porcelain



Unusual Requests Welcome

180 Barwon Terrace, Winchelsea

0428 672 704

B & H Modifications

Bob Verity

55 Stephenson Road
Winchelsea 3241
Ph: 5267 2467
Mobile: 0411 610 678



Industrial Sewing Machine Work

Caravan Annexes, Trailer Covers, Shade Sails, Alterations and Repairs to Camping and Tents. Clear PVC Blinds Repairs to CLEAN Horse Rugs No Job Too Small
Email: bobverity@southernphone.com.au

Probus welcomes speaker Cam Ward

Winchelsea Probus Club enjoyed a visit from Cam Ward as their speaker at the September meeting.

Cam gave up a couple of his work time hours to visit us and tell us a little about how he became a journalist and what papers he worked for, including being editor of the Geelong Echo.

He joined the Geelong Advertiser and has now moved on to their GT Magazine, mainly as their food writer, where he has the luxury of longer deadlines and the opportunity of meeting interesting local people and visiting a wide variety of eateries.

He also touched on his passion for collecting and gave some handy advice and how to avoid the pitfalls.

Many thanks Cam



Trust for Nature targets areas critical for protection

Under a new plan by Trust for Nature an indicative 100,000 ha of Victoria's nature on privately-owned land will be targeted for protection by 2030.

Currently about 110,000 ha of freehold land across Victoria has been protected.

Trust for Nature has released its new Statewide Conservation Plan which provides goals and targets for strategic conservation on private land across Victoria over the next decade.

In the face of biodiversity and climate crises it's more important than ever that scarce resources are placed in the areas where they can have the most impact. Hence why we have prioritised the most important habitat to protect.

The Plan identifies 18 landscapes (13.5% of all private land in Victoria) across the state that will make the greatest contribution towards conservation on private land, helping to save vulnerable plants and animals.

It is informed by the conservation work done by many other organisations including the Victorian Department of Environment, Land, Water and Planning;

Zoos Victoria; Parks Victoria; and catchment management authorities.

Trust for Nature's Conservation Science Advisor Dr Doug Robinson said the Plan complements the Threatened Species Action Plan 2022-2032 recently released by the Australian Government, which commits to protect and conserve more than 30 per cent of Australia's land mass. In Victoria, 78 per cent of native vegetation on private land is rare or threatened.

Doug said, "We can't rely on national or state parks to prevent species extinction. We need the support of landholders on freehold land to protect nature and manage it for conservation.

One way they can do this is to protect the land permanently by placing a conservation covenant on it.

"Putting a conservation covenant on a property is voluntary. It doesn't cost the landholder anything, and in most cases it won't restrict them from managing the land how they already are."

Eighteen focal landscapes across Victoria are identified in the Plan as being the areas in most need of further protection to give ecosystems, animals

and plants dependent on private land the best opportunity to survive in the face of climate change. These include areas such as the Northern Plains, the Murray floodplains west of Mildura, Wimmera, box-ironbark country, Yarra Ranges and Gippsland plains.

The Statewide Conservation Plan also identifies the animal and plant species that will most benefit from protecting private land and therefore drive the areas that are the focus for Trust for Nature.

They include Plains-wanderer, Warragul Burrowing Crayfish, Southern Bent-winged Bat, Golden Sun Moth, Gorae Leek-orchid, Yarran, and Swamp Sheoak.

Trust for Nature is one of Australia's oldest conservation organisations, established in 1972 to protect habitat on private land. 2022 marks its 50th year.

It is a non-profit charitable organisation that relies on the generosity of supporters to help protect Victoria's biodiversity.

Free Community Service Advertisements

Services and Activities in Winchelsea

V/Line

TRAIN SERVICES

To Geelong

Mon - Fri

6:41 am, 7:59am, 11:34am,
2:01pm, 7:37pm

Sat and Sun

9:35am, 1:36pm, 7:18pm

To Warrnambool:

Mon - Fri

9:29am, 2:56pm, (to Colac
5:27pm), 6:45pm, 8:53pm

Sat and Sun

8:47am, 2:49pm, 8:37pm

Country Women's
Association7pm Second Wednesday of Month
Winchelsea Senior Citizens' Hall

Bus to the Hub

For reservations on the weekly bus
to the Eastern Reserve Hub,
please phone 52671202.Surf Coast
Mobile LibrarySurf Coast Mobile Library
parked in Hesse Street
(outside Shire Hall) on Fridays
between 2:00 and 5:00pm
unless it is a Public Holiday.
Hesse St, Fridays, 2pm-5pm

Winchelsea Taxi

0429 672 888 or 5267 2888

Wheelchair accessible
10 seater bus available.

Winchelsea SES

Meeting and training
2nd Wednesday

Training 4th Wednesday

Visitors and inquiries welcome

0408 102 802

Op Shop

Open Friday, Saturday, Sunday, Monday

10 am to 3pm

All proceeds to Hesse Hospital.

Winchelsea and District
Combined
Probus Club

Meets 1st Monday of the

month at 10am. Senior

Citizens Rooms, Harding St, Winchelsea.
New members always welcome.

Enquiries Linda 0439 817 263.

Body Therapy Classes

Yoga, Pilates, Qi Gung
and Mindfulness
Meditation PracticesTuesdays 6.15pm \$13 Cash
Catholic Church Hall -School Term Only

Dr Haidee Benning, 0428 177 964

Winchelsea
PlaygroupEvery second Thursday 10am-12pm
St Thomas Anglican Church Hall
cnr Barwon Tce and Hopkins St, Winchelsea
Contact: Melissa 0456181268
Facebook - Winchelsea Playgroup 2019

New families welcome

Winchelsea
Girl GuidesOur Unit meets at the Catholic Church
Hall, Harding St Winchelsea
each Monday 4.30pm-6pm

All girls 5yrs- 15yrs Welcome!

Contact Yvonne Orchard 0448 672 630
or Bonnie Stokes 0401 386 2741st Modewarre
and Winchelsea
Scout Group

Joey's: Tuesdays of school term 5-6pm

Cubs: Mondays of school term 6:30-8pm

Scouts: Tuesdays of school term
6:30-8:30pm

All at Modewarre Hall, Cape Otway Rd

Venturers: Wed at Walton's Rd Venturer Den

Contact Marie McPadden 0409 330147

Winchelsea
Transfer
Station

Opening Hours

Monday	Closed
Tuesday	2pm-4pm
Wednesday	Closed
Thursday	2pm - 4pm
Friday	Closed
Saturday	1.30pm - 3.30pm
Sunday	9.30am - 12.30pm

55 Cressy Road, Winchelsea.

Accepts household garbage,
mixed commercial and industrial waste,
mixed construction and demolition waste.

Accepts recyclable materials.

Accepts one recycle bin two waste bins.

Does NOT accept clean fill.



PHOTOGRAPHY EXHIBITION.

Hosted by Growing Winchelsea.
Shire Hall
November 18th-27th.

November 18th
6.30pm to 8.00pm
Exhibition opening reception.
Announcement of Junior Photography competition winners.

November 19th-26th.
Exhibition open to the general public, patrons asked to vote for "Peoples choice" award.

November 27th
6.30pm 8.00pm
Closing Reception
Awards presentation ceremony.

Printed images will be available for purchase.

Awards

All Ages

- Best photo.
- Best Pet.
- Spirit of Winchelsea.
- Peoples choice.

Junior

- 1st prize.
- 2nd prize.
- 3rd prize.

ENTRIES CLOSE
November 4th 2022

 GROWING WINCHELSEA PHOTO COMPETITION |
 www.growingwinchelsea.com |
 growingwinchevents@gmail.com |
  gw_photo_comp

Lions' outing

Winchelsea Lions Club had a day out around the Bellarine Peninsula including Point Lonsdale and Queenscliff visiting the lighthouse, maritime museum and lunch at the marina.

Despite the wet windy conditions it was a lovely day. Many thanks to Don for organising and driving.



DAVIC AG

CONTRACTING AND EARTHMOVING

For all your harvesting needs
Mowing, raking, round bailing, paddock prepping, spreading and sowing

Call Dave on **0417 579 973** Bambra



have you tried 'owl' coffee?

Café La Hoot

1 willis st cafelahoot@gmail.com 0407 528 999

Winchelsea Trading—agents for:

UNIVERSAL TOOL SHARPENING

For all your sharpening needs
Rural—Domestic— Industrial

- Hand tools
- TCT Blades
- Chainsaws
- Kitchen tools
- Garden tools
- Brobos
- Firewood saws
- Bandsaws

- Chipper & planer blades
- Drill and router bits
- Dog & horse clipping blades

5248 2061

'We give you the edge you need'

NO MATTER WHAT YOUR PROBLEM, DODDS ELECTRIX CAN DEFUSE THE SITUATION.

RURAL, INDUSTRIAL, COMMERCIAL. DOMESTIC
PHONE 0438 887 360
EMAIL: DODDSY@FASTMAIL.FM
PO BOX 36 BIRREGURRA, VICTORIA 324
REC: 17520 ABN: 64 581 250 880



5234 6585 0417 385 984
*For all your domestic & stock water.
Also available for road and civil construction
Local owned and operated.*



St Vincent de Paul Society
good works


Covering Meredith, Bannockburn, Anakie, Lethbridge, Inverleigh, Teesdale, Shelford, Elaine and Winchelsea

52219170

Monday - Friday 9am to 2 pm
<http://www.vinnies.org.au>

A caring Catholic organisation offering
"a hand up" to all people in need.

TRENCHES & HOLES PTY LTD.



PHILLIP ROBERTSON
☎ 0427 672 945
WINCHELSEA

- General Earth Works
- Driveways
- Trencher
- Kanga Loader
- Grader
- Excavator Work (3.5 & 6.5 Tonne)
- Tip Truck
- Rock Breaker
- Post Holes & Shed Footings

A.B.N 74006896898



WINCH WEBSITES
WEB SOLUTIONS SIMPLIFIED.

WEBSITES

**GROW business
INCREASE reach
SAVE time**



Find out what a website could do for you
winchwebsites.com.au
04 887766 20

CONCRETER

Alister Aitken

No job to big or small

- Driveways - Carports - Crossovers - Footpaths - Sheds Slabs - Colored Concrete - Concrete sealing - Exposed Aggregate - & more -

Call or text for a no obligation free quote

Servicing our local Winchelsea & Surrounding Areas

alaitken.aa@gmail.com or Alister - 0411 871 950

A.B.N 47 228 574 460

Property Slashing and Block Mowing

FREE QUOTES

Competitive rates for property slashing and mowing of your block. Servicing entire of Surfcoast shire and surrounding shires.

Call Scott TODAY to discuss your needs and to book in.

0408 523 290

Located WINCHELSEA



IN & OUT LOGISTICS
A Reliable and Local business

Winchelsea Churches

All the churches of Winchelsea are happy to welcome any who would like to join them for worship.

St Thomas' Anglican Church

in Barwon Terrace meets at 10.00 am every Sunday morning, followed by morning tea in the hall.

Activities at St Thomas' this week.

- Monday 10.00 am - Mainly Music.
- Wednesday 10.00 am - Know Your Bible.
- Thursday 10.00 am – Playgroup, meets fortnightly, next time, 3rd November.
- Friday 10.00 am - Know Your Bible.
- Saturday 3.00 – 4.30 pm Free Craft for those 13 to 20. BYO project. Call Ellen Miller 0439 439 065

Phone Rev Lynne Clarke
0477 672 042
stthomaswac@gmail.com

St John's Catholic Church

in Harding Street meets for Mass at 6.00pm on Saturday evenings.

Baptism preparation is on the first Tuesday of the month at St Mary MacKillop Church, Bannockburn.

Please contact Anita, 0409 432 833 or Father Joseph Panackal, 0404 598 558

St. John the Baptist, Winchelsea

Nov 5, 12, 19, 26 at 6pm
(daylight saving)

St. Mary MacKillop, Bannockburn

Nov 6, 13, 20, 27 at 11am

St. Josephs, Meredith

Nov 6, 20 at 9am

St. Brigids, Anakie

Nov 13, 27 at 9am

Sacred Heart, Inverleigh

Nov 20, 4pm

Winchelsea Uniting Church

in Hesse Street meets at 9.30 am every Sunday morning.

Worship is followed by morning tea.

Phone 0475 777 301
uca.winchelsea@gmail.com

Please note that Mass is celebrated at St John the Baptist Catholic Church Winchelsea on Saturday evenings commencing at 6pm for the spring and summer period.

On the first Saturday of the month Adoration and Benediction will commence at 5pm with Reconciliation available during this time. Mass will follow at 6pm. Adoration will be held on November 5th at 5pm here in Winchelsea.

Any parents wanting their child Baptised can contact Anita on 0409 432 833. Enrolment information is held on the first Tuesday of each month in Bannockburn. Parents can have their child Baptised here in Winchelsea if they wish to. Please discuss this with Father Joseph and Anita.

Reconciliation/Anointing: Before/after Mass is available. If you would like Mass to be offered for your loved ones, please contact Father Joseph on 52 861 230 or 0404 598 558.

Combined Catholic Parish Raffle: Tickets costing \$2.00 are available, with \$1.50 coming back to our parish. The first prize being a car to be drawn on the 3rd December.

We offer our prayers to the flood victims here in Australia, the Ukraine, and for the sick in our parish.

God bless.

Winchelsea Uniting Church

Hesse St, Winchelsea 3241
uca.winchelsea@gmail.com
0475 777 301
Services 9.30am Sundays

St John's Catholic Church

Harding St, Winchelsea 3241
Father Joseph Panackal
0404598558

St Thomas' Anglican Church

Barwon Tce, Winchelsea
Rev'd A. Lynne Clarke
stthomaswac@gmail.com
0477 672 042

Thought for the Week

“For we are God’s workmanship,

created in Christ Jesus to do good works,

which God prepared

in advance for us to do.”

John Bader (Lay Preacher)
Uniting Church.

The Sandridge
>>rooms with a view
EAT OCEAN ROAD

HOUSEKEEPERS WANTED

The Sandridge Motel in Lorne is looking for Housekeeping staff to join our friendly team
General Hours are
10am-2pm daily
Flexible working days
Casual award rates paid
Contact us on 5289 2180 or
enquiries@sandridgemotel.com.au

Plasterer & Painter

Daryl Hecker

Domestic & Commercial
Renovations & Repairs
Suspended Ceilings
Dustless Sanding
New Homes
Extensions



Ph 0419 194 799



**WINCHELSEA
CONCRETING**

• Driveways • Sheds • Decorative Concrete • Raft Slabs


Robert Murphy
 ☎ 0438 235 237
 ✉ winchelseaconcreting@outlook.com

Women's Workshop

Any ladies out there who are interested in learning some workshop and home maintenance skills?

The Winch Mens' Shed are running free workshops starting in August. Let us know what you would like to learn and what days and times are most suitable. We can tailor the workshop to cover what is most requested and on days that suit most.

If you are interested in attending please contact the Men's Shed on 0407839139 (Ray) or email



MEL'S DANCE CENTRAL
presents...
WELCOME TO THE

World of Disney

SUN 13.11.22
 STAGED BY THE
 DANCERS OF MEL'S
 DANCE CENTRAL
 CHOREOGRAPHY
MELANIE DOBROVOLJNI
 TICKETS ON
 SALE NOW!
 via the COPACC
 Box Office

Disney brought to life.
 A stage show like no
 other

COLAC OTWAY PERFORMING ARTS AND CULTURE CENTRE
 95-97 GELLIBRAND STREET, COLAC VIC
 copacc.com.au

WWW.MELSDANCECENTRAL.COM.AU
 @meldancecentral

Knuckey's Winchelsea

Ph: 5267 2011

Knuckey's have in stock a complete range of batteries to suit tractor, heavy machinery, cars, utes

The largest range of the best oil for your vehicles—**CASTROL**—
 'when only the best will do'

The largest range of V belts.
 A, B, C, D M Sections
 Bolts and nuts for all occasions
 Steel cut to size

AFS BOOKKEEPING

"Your local bookkeeper"

Bookkeeping
 Administration
 Payroll
 BAS Services
 Xero / Myob
 Reckon / Quickbooks
 Registered BAS Agent

Angelique Snetselaar
0456 077 485
 info@afsbookkeeping.com.au
 www.afsbookkeeping.com.au



direct TEMPORARY FENCING

FOR HIRE - SUPPLIED & ERECTED - 7 DAYS
 GEELONG - BELLARINE - COLAC - SURF COAST
PHONE CAM 0417 310 800

DownRyte Excavations

- Excavations
- Drilling and Piling
- Rock Placement
- Tree and Stump Removal

Sean Hunwick
 Mobile: 0409 447 288
 Email: downryte@activ8.net.au



Winchelsea Community House

Hours: Monday – Friday, 9.00am - 2.00pm
Address: 28 Hesse Street, Winchelsea
Phone: 5267 2028
Email: reception@winchhouse.org.au



TERM 3 AT WINCH HOUSE

TAI CHI

BEGINNER'S - FRIDAYS 9.00AM

INTERMEDIATE -FRIDAYS 9.30AM

Cost is \$10 per session

LIBRARY STORYTIME

Next session

Friday 4th November

at 2.00pm in the Shire Hall

Cost: FREE



LEVEL 2 FIRST AID COURSE AND CPR UPDATES

SATURDAY 12TH NOVEMBER AND SATURDAY 3RD DECEMBER

FULL COURSE \$160 (8.30-3.30)

CPR ONLY \$65 (8.30-11.00)

BOOKINGS ESSENTIAL (BOTH COURSES ARE FILLING FAST)

PLEASE EMAIL

manager@winchhouse.org.au

POWER SAVING BONUS

\$250

WINCH HOUSE IS ABLE TO HELP WITH YOUR POWER SAVING BONUS CLAIM OF \$250

PLEASE PHONE US FOR AN APPOINTMENT

IN TERM 4

52672028



NOMINATION

for a position on the 2022-23 Growing Winchelsea Inc. Committee

Election to be conducted at the Annual General Meeting, Wednesday 16 November 2022, commencing 7.00pm

I wish to nominate

For the position of

Nominated by

Signature of nominator

Date

I am a current member of Growing Winchelsea Inc. and agree to be nominated for the above position.

Signature of nominee

Date

Nomination forms are to be forwarded to the GW Secretary prior to the election of office bearers. secretary@growingwinchelsea.com

52672192 **R & K Creative Framing**
for all your framing needs

free quotes
pension discount
specialist in Age & Disability Modifications

Ray & Kim Jansen
10 Witcombe st
Winchelsea 3241

Ray The Home
Maintenance **HANDYMAN**
abn 47928623462

0414672192

BOOK SALE

FRIDAY 4th NOVEMBER
&
SATURDAY 5th NOVEMBER

10:00am – 2:00pm

**272 Torquay Rd Grovedale
(Cnr Reserve and Torquay Roads)**

**NOTHING
OVER \$1.00**

Proceeds to **Uniting**



**Winchelsea
Supermarket**

Trading Hours

Monday to Saturday

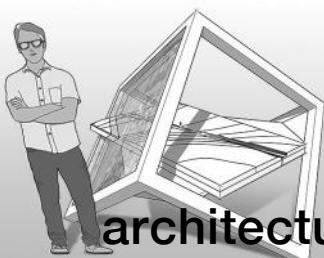
8.30am to 7.30pm

Sunday

10am to 7pm

Ph: 5267 2676

29 Main St, Winchelsea



3D design and visualisation

richard@studiobutcher.com | 0413 168 741

architectural models | 3D prints | product development



The 5 C's voters want

Research conducted by the Victorian Electoral Commission has been used to inform its election delivery and communication services for next month's State election.

'After the 2018 State election, we asked voters what was important to them and have addressed as many of those aspects as possible,' said Deputy Electoral Commissioner Dana Fleming. 'What we heard is that voters want convenience, communication, choice, control and confirmation that they have done things properly.'

As a result, Victorian voters will be able to take advantage of:

- a 50% increase in the number of early voting centres (from 103 in 2018 to 155 in 2022)
- 'after hours' early voting, including several late nights and all day on Saturday 19 November (9 am to 5 pm)
- not needing a reason to vote early or by post
- digital information and reminders via the VEC's VoterAlert service
- short videos on topics including how preferences work, completing ballot papers correctly and spotting electoral misinformation and disinformation
- video snippets in 23 languages on enrolling, completing ballot papers

correctly and what to do if you forget to vote

- telephone-assisted voting (TAV) for voters who are blind, have low vision or a physical disability that means they require assistance to vote (from 14 November)
- translated website information in 19 languages, including enrolment forms that convert text to English when printing
- live Auslan video interpreting via the Convo app in both early and election day voting centres
- hearing loops at all early voting centres.

'We want to ensure the voting experience is asy and accessible.'

AVAILABLE FOR HIRE

Vermeer and 4in1 bucket

**Augers
Forks
Smudger**

For more information
phone 0409 433 687 or
visit our facebook page
MGT Carpentry

MGT CARPENTRY

**Big on products.
Big on service.
And big on local banking**

Find out more. Call us on 5267 3189 or search Bendigo Bank Winchelsea & District.

Defibrillator Available Here

AED

BANK LOCAL

Bendigo Bank

**Community Bank
Winchelsea & District**



Chiropractic - Remedial Massage - Myotherapy - Sound Healing - Breathwork



Chiropractic care for:

Stress & Anxiety	Pain Management
Body Aches & Tension	Family Wellbeing
Poor Sleep	Health Longevity

03 5267 2240 Shop 4/21 Hesse St Winchelsea   <https://onebodychiropractic.com.au/>




Winchelsea Medical Clinic

36 Main Street, Winchelsea

Bulk Bills patients on Pension, Health Care Card and Children

Enquiries and Bookings please phone 03 52 928 028 or www.winchmc.com.au

We are a vaccination provider  

NATURAL GAS CONNECTIONS

M. & L DRAYTON PLUMBING SERVICES

YOUR LOCAL LICENSED

- PLUMBERS (24356)
- GAS FITTERS
- GAS CONVERTERS
- CARBON MONOXIDE TESTING

MARK 0428 520 142



Moriac Veterinary Clinic

0447 781 089

PHONE 24 HOURS

784 Hendy Main Road Moriac

info@moriacvet.com

www.moriacvetclinic.com.au

HOURS // Monday - Friday: 8am - 5pm



TANGO

Pet Grooming

RONNIE.

Winchelsea's pet groomer.

For appointments

0436 008 989

tangopetgrooming@gmail.com



Lupton BUILDERS

SPECIALISING IN QUALITY




REGISTERED Building Practitioner

• NEW HOMES	• EXTENSIONS	• RENOVATIONS
• ALTERATIONS	• DECKS	• PERGOLAS
• GARPORTS	• VERANDAHS	• RE-GLADS
• BATHROOMS	• WINDOW REPLACEMENTS	

LEIGH LUPTON 0438 840 104 | CHRIS LUPTON 0407 681 514

LEIGHLUPTON17@GMAIL.COM Est. 1977

Commercial | Industrial | Domestic

HAMILTONS

Truck & Bobcat Hire

Give Aaron a Call

0438 438 623



Winchelsea Community Facebook pages

What's on in Winchelsea

**FLYERS, LOCAL EVENTS,
SMALL BUSINESS,
PROMOTING WINCHELSEA**

facebook.com/WhatsoninWinchelsea

Winchelsea FREE

FREE ONLY

facebook.com/groups/winchelseafree

Winchelsea Community Information AUSTRALIA

POSITIVE DISCUSSION

facebook.com/
groups/207538644446972

Winchelsea Classifieds 3241

FOR SALE ONLY

facebook.com/
groups/216942861684082

Winchelsea Lost and Found

LOST PETS

facebook.com/
groups/768187693217518

Winchelsea Op Shop

facebook.com/
HospitalAuxiliaryOpShopWinchelsea

Winchelsea Tea Rooms (Community Centre)

facebook.com/WinchelseaTeaRooms

Winchelsea Community House

facebook.com/
winchelseacommunityhouse

Winchelsea Coronavirus Community Support Group

facebook.com/
groups/2676957719207927/

The Green Winchelsea Residents

facebook.com/
groups/515322772623126

Growing Winchelsea Inc

facebook.com/growingwinch

Winchelsea Star

winchelseastar.org.au/step/subscribe/

Winchelsea Movie Club

facebook.com/winchelseamovies

Winchelsea Community Market

facebook.com/
winchelseacommunitymarket

Winchelsea Land and River Care Group

facebook.com/envirowinchelsea/

Upper Barwon Landcare Network

facebook.com/UpperBarwonLandcare

Winchelsea & District Historical Society Inc.

facebook.com/
Winchelseaanddistricthistoricalsociety/

Winchelsea Wildlife Shelter

www.winchelseawildlifeshelter.com/

SCARS - Surf Coast Animal Rescue Service

facebook.com/groups/415211698950674

Winchelsea Gardeners

facebook.com/
groups/779878518703025

Winchelsea & District Historical Society

facebook.com/
Winchelseaanddistricthistoricalsociety/

Winchelsea Repertory Society Inc

facebook.com/winchrep/

Winchelsea Globe Theatre

facebook.com/Winchelsea-Globe-
Theatre-164790897641678

Winchelsea Uniting Church

facebook.com/winchelseaunitingchurch

St Thomas' Anglican Church

facebook.com/StThomasWinchelsea

St John the Baptist Catholic Church

facebook.com/pages/Winchelsea-
Catholic-Church/101775670163180

Winchelsea Mainly Music

facebook.com/
groups/668500343953191/

Winchelsea Health Club

facebook.com/WinchelseaHealthClub

Winchelsea Playgroup 2019

facebook.com/
groups/551663435367031

Winchelsea Girl Guides

www.guidesvic.org.au/

Winchelsea/Modewarre Scouts

facebook.com/1stModewarreScouts

Winchelsea Fire Brigade

facebook.com/winchelseafirebrigade/

Winchelsea SES

facebook.com/groups/WinchSES

Country Women's Association - CWA Winchelsea Branch

facebook.com/pg/CWAWinchelsea/

Winchelsea Bowls Club

facebook.com/Winchelsea-Bowls-
Club-533783333344345/

Winchelsea Blues Cricket Club

facebook.com/groups/8999049476/

Winchelsea Blues FC

facebook.com/WinchelseaFNC/

Mel's Dance Studio

facebook.com/melsdancecentral

Winchelsea Golf Club

facebook.com/winchelseagc/
facebook.com/
groups/1324943804676697

Winchelsea Kyokushin Karate Club

facebook.com/winchelseakyokushin

WYLD Winchelsea Youth Leisure and Drop in

facebook.com/
groups/569737570027065/

Lions Club of Winchelsea

facebook.com/LionsWinchelsea

Winchelsea Probus

10am 1st Mon month at Sen Citz Hall



GREAT Bundle Deal on Bosch Hot Water... FROM ELGAS

Buy any Bosch Bluetooth continuous flow hot water model - 16Litre, 20Litre or 26Litre and **Receive \$100* in Elgas bonus LPG gas credits**

*For more details: www.elgas.com.au/appliances/bosch-cptflow-16-20-26-lpg-bundle-sale

AND... for new customers, an additional \$80 WORTH OF LPG GAS CREDITS when you open a new LPG Gas account with Elgas**

**Further details can be viewed at: www.elgas.com.au

Ask about the Elgas Easy Payment Plan - 12 months interest free*** on selected LPG appliances

***Further details can be viewed at: www.elgas.com.au/epp

Automatic tanker gas bottle refill OR gas bottle exchange refill is available for home or business....
Call today or visit our website for our many customer benefits and latest offers

131 161
www.elgas.com.au

ELGAS

STS ACCOUNTING GROUP

Your Taxation & Superannuation Specialists.

Winchelsea
5267 2673
www.surftax.com.au

STORAGE KING

SIMPLE STORAGE SOLUTIONS

- Personal & Business Storage
- Boat, Caravan & Vehicle Storage
- High Security Premises
- Individually Alarmed Units
- Electric Gate Access
- 7 Day Access & CCTV

YOUR STORAGE PROBLEMS SOLVED

5267 3116
6 ALSOP DRIVE, WINCHELSEA 3241

HESSE RURAL HEALTH

- Acute Hospital
- Urgent Care
- Residential Aged Care
- Dementia Specific Care
- Home Care Packages
- District Nursing
- Diabetes Education
- Dietician
- Occupational Therapy
- Podiatry
- Physiotherapy
- Planned Activity Groups
- Community Health Groups
- Palliative & Continence Care

- Domestic and Commercial hire equipment
- Industrial welding gas
- Digging and Earthmoving equipment
- New trailers and trailer repairs
- Firewood
- Stockists of Royal Oil Lubricants products
- LPG for domestic and commercial requirements

Give Chris and the Team a call on **5232 1177** or email info@colachire.com.au

www.colachire.com.au
101 Wallace St Colac 3250

COLAC HIRE

M & L DRAYTON PLUMBING SERVICES

REG No 24356 C/A No C02594

- Domestic and Rural Plumbing
- Roofing
- Sewerage & Septic
- LPG & Natural Gas Connections
- Motorised Drain Cleaning
- Backhoe Hire

Phone Mark 5288 7244
PO BOX 98 WINCHELSEA 3241
Mobile 0428 520 142

Scott McDonald
0423 413 829

S.J.R AUTOMOTIVE
ABN 948 463 846 39
13 ALSOP DRIVE, WINCHELSEA VIC 3241

Aquafire Healing
Transforming Your Health Through the Healing Power of Nature

NATUROPATHIC MEDICINE • HERBAL MEDICINE
NUTRITIONAL MEDICINE • HOMOEOPATHY
REMEDIAL MASSAGE

www.aquafirehealing.com
Ph: 0415 530 276

SOUTHERN GRAIN STORAGE PTY. LTD.

AG SUPPLIES FERTILISER GRAIN STORAGE SEED CLEANING

(03) 5267 2351

HF RICHARDSON

PROPERTY

Residential | Rural Lifestyle | Agricultural Farms

Servicing all your real estate needs
Ken McDonald **0418 524 150**





Fresh strategy for Council's communications and engagement

Surf Coast Shire Council has endorsed principles and processes for communicating and engaging with community for the next three years.

Council's Communications and Community Engagement Strategy 2022-25 was shaped by two phases of community consultation and aligns with goals in the Council Plan

The strategy's key directions focus on:

- Working with First Nations people.

- Improving accessibility and inclusion and representation of diverse views, and reducing barriers to participation.
- Building relationships and trust working together with community and stakeholders, sharing information, creating opportunities and improving understanding.
- Pursuing more opportunities for community and stakeholder input into Council's decision-making processes via influential and deliberative engagement.
- Growing Council-wide understanding of the role and importance of good engagement and communications, and seeking continuous improvement.

- Innovation and use of technology, exploring additional digital communication options and investigating development of a Council-specific app.

Deputy Mayor Liz Pattison said replacing of the 2019-21 strategy presented opportunity to review priorities, seek fresh community input and set new goals.

"Our strategy will provide guiding principles and framework while supporting implementation of the Council Plan which sets out our community aspirations and needs."

A summary of community feedback and a copy of the 2022-25 strategy can be viewed via surfcoast.vic.gov.au/ccestrategy



Volunteers Required

- Bus Driver & Outings Assistant
- Resident Visitor
- Events and Activities Assistant
- Group Wheelchair Walks Assistant
- Appointments Escort
- Social Support Activities
- Gardening - Winchelsea

Volunteers are essential to our aged care system, supporting the wellbeing of older people in their homes and in residential settings



For more information please contact Jessica Culhane, Communications and Community Partnership Officer via phone on [031 5267 1200](tel:03152671200) or via email jculhane@hesse.vic.gov.au

Wightons Lawyers

Dispute Resolution & Litigation
Debt Collection
Property Law
Wills & Estates
Powers of Attorney
Business Law
Family Law

By appointment only

22 Willis Street, Winchelsea
ph. 5221 8777

www.wightons.com.au

Winchelsea Towing

24 Hour Accident and Breakdown Towing

0418 535 402



Green Lead Electrical
Connecting you to a greener future
REC 23618

0467 097 101



Servicing Geelong & the Surf Coast

Specialising in all residential electrical work including:

- Switch board & lighting upgrades
- Outdoor lighting
- Electrical safety checks
- Energy efficient LED lighting
- Ceiling sweep fans & ventilation
- Energy saving advice

Phone Martin Wilkinson:
0467 097 101
greenlead@outlook.com

132288-0018-14



R.A.K. DAVIS & SONS

CARTAGE CONTRACTORS

WINCHELSEA

SUPPLIER OF ALL QUARRY MATERIALS, TRUCK HIRE

CARTAGE OF GRAIN, LIME, GYPSUM & SUPER

LANDSCAPE & GARDEN SUPPLIES

56 WILLIS ST, WINCHELSEA

Ph – 5267 2094

Ryan – 0438 672 281

Email: rakdavis@bigpond.com

Winchelsea Star

Since 1977



ISSN 2202-6851



5234 6585 0417 385 984
For all your septic tank, grease traps and interceptor pits servicing.
Locally owned and operated

Funeral Planning

Working out what is best for you.

Prepaid Funerals, Funeral Bonds, Pay-by instalments...

There are many options and its important to make the right choice.

Alyson Burchell will be available by appointment to answer any questions about funerals and planning ahead.



For more information or to make an appointment contact Sue on 5221 4788

Tuckers Community Office,
Surf Coast Taxation Services, 22 Willis Street,
Winchelsea

First Tuesday of the Month,
by appointment 10.00am - 12.00pm

Caring for families since 1883

Tuckers
Funeral & Bereavement Services
...for a life worth celebrating

5221 4788
www.tuckers.com.au

CHARLES STEWART

rma network Accredited Member

Charles Stewart & Company are leading livestock and real estate service providers covering Victoria's south west

	LIVESTOCK
Jamie McConachy	0418 522879
Peter McConachy	0408 522878
Matt Nelson	0428 315400
Gerard Bohan	0400 005541
Lachie Barclay	0438 346291
John Thornton	0408 526367
Dougal McIntyre	0439 575612
Ross Spitty	0419 539717



	REAL ESTATE
Michael Stewart	0418 520467
Daryl Osborne	0419 388341
Anthony McDonald	0418 593597
Gerard Bohan	0400 005541
Stephen Lugg	0417 556098
Josh Lamanna	0417 586032



Office
56 Bromfield Street, Colac
www.charlesstewart.com.au

Pixie Wash
Mobile Doggie Care
Dogs up to 20kg
Pixie Heath
0417 586 080

Winchelsea AUTO SERVICES
One stop auto shop
17 Alsop Drive

- LOG BOOK SERVICE
- AUTO ELECTRICAL
- TOWING
- AIR CONDITIONING
- CLUTCH & BRAKES
- TYRES
- WHEEL ALIGNMENT
- BATTERIES

CAR, TRUCK REPAIRS & Roadworthys
PH: 5267 3001
Mob: 0417 137 457