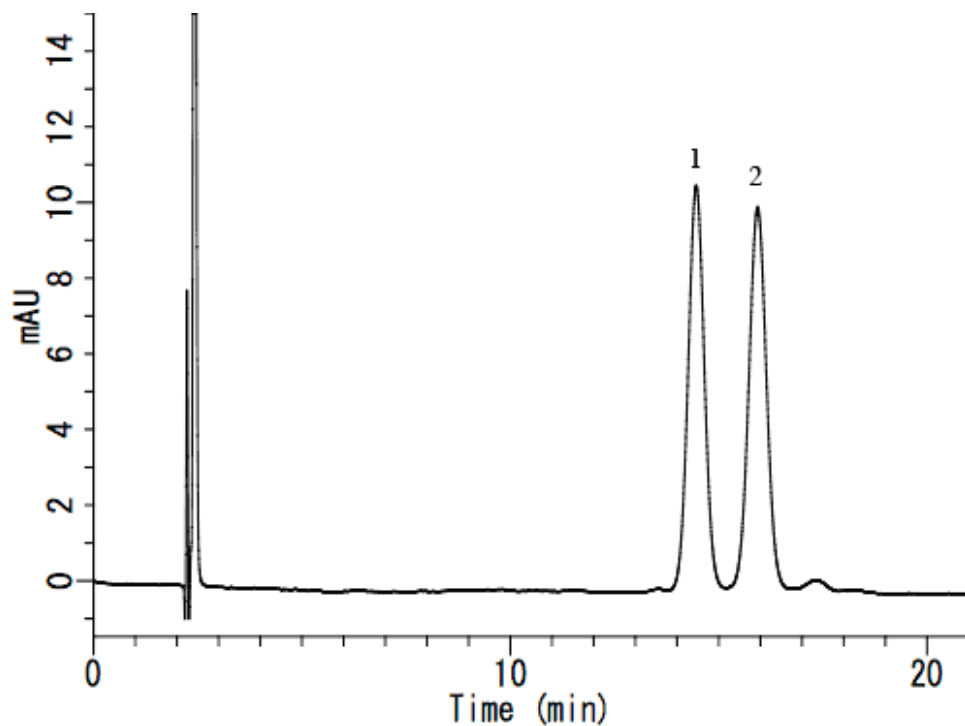


InertSearch™ for LC

Inertsil® Applications

Analysis of Carotene in Food

Data No. LA517-0696



System : GL-7400 system

Column : Inertsil ODS-P (5 μ m, 250 x 4.6 mm I.D.)

Column Cat. No. : 5020-02002

Eluent : A) CH₃OH

B) C₂H₅OH

A/B = 90/10, v/v

Flow rate : 1.0 mL/min.

Col. Temp. : 40 °C

Detection : PDA 455 nm (GL-7452A PDA Detector)

Injection Vol. : 20 μ L

Sample :

Solutes : 1. α -Carotene (2.0mg/L)

2. β -Carotene (2.0mg/L)