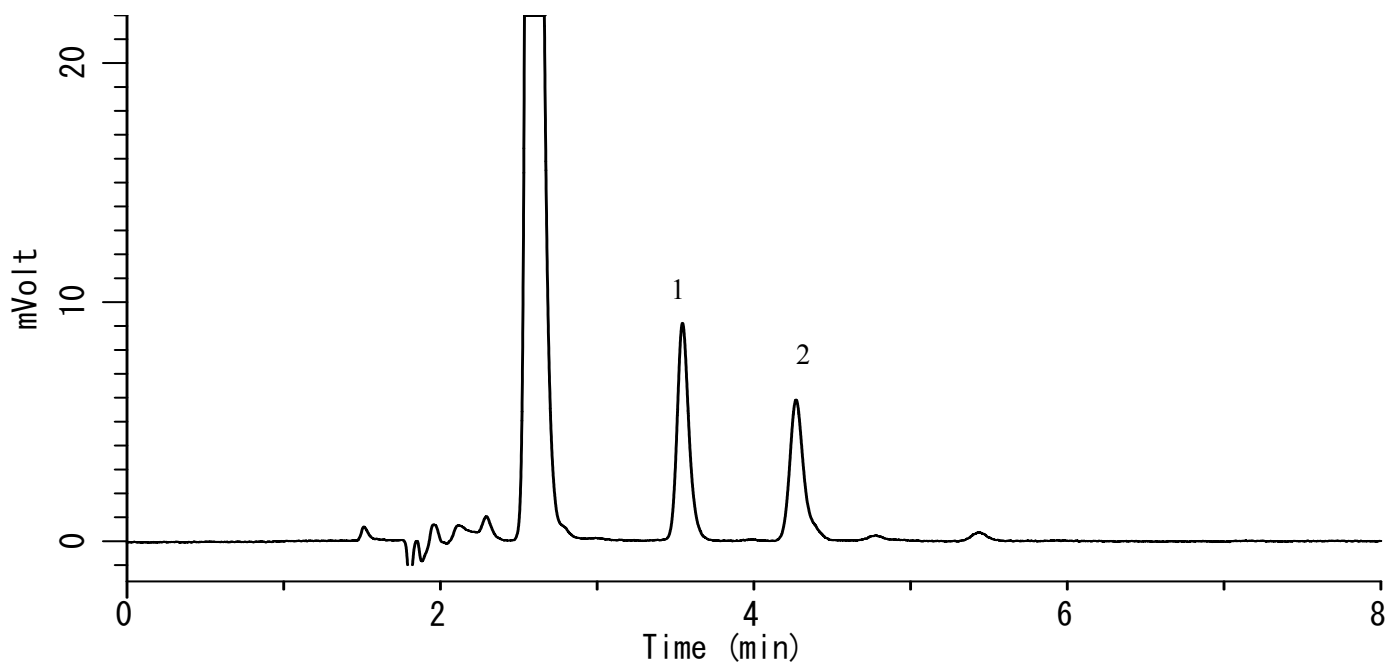


# InertSearch™ for LC

Inertsil® Applications

## Analysis of DNPH-aldehydes

Data No. LA720-0696



### Conditions

**Column** : Inertsil ODS-SP (5 $\mu$ m, 150 x 3.0 mm I.D.)  
**Column Cat. No.** : 5020-02725  
**Eluent** : A) CH<sub>3</sub>OH  
          : B) H<sub>2</sub>O  
          : A/B =70/30, v/v  
**Flow Rate** : 0.4 mL/min  
**Col. Temp.** : 60 °C  
**Detection** : UV 360 nm (LC800 UV Detector)  
**Injection Vol.** : 10  $\mu$ L

### Analyte

1. Formaldehyde-DNPH ( 100 $\mu$ g/L )
2. Acetaldehyde-DNPH ( 100 $\mu$ g/L )