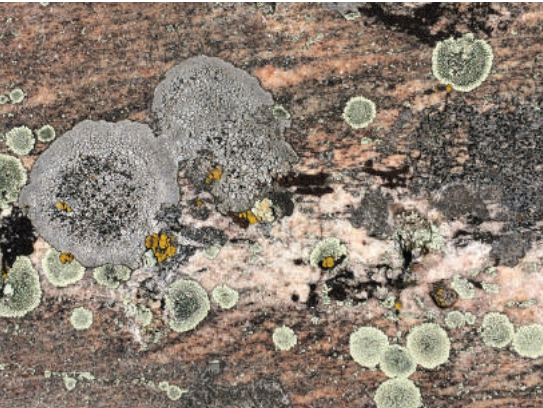
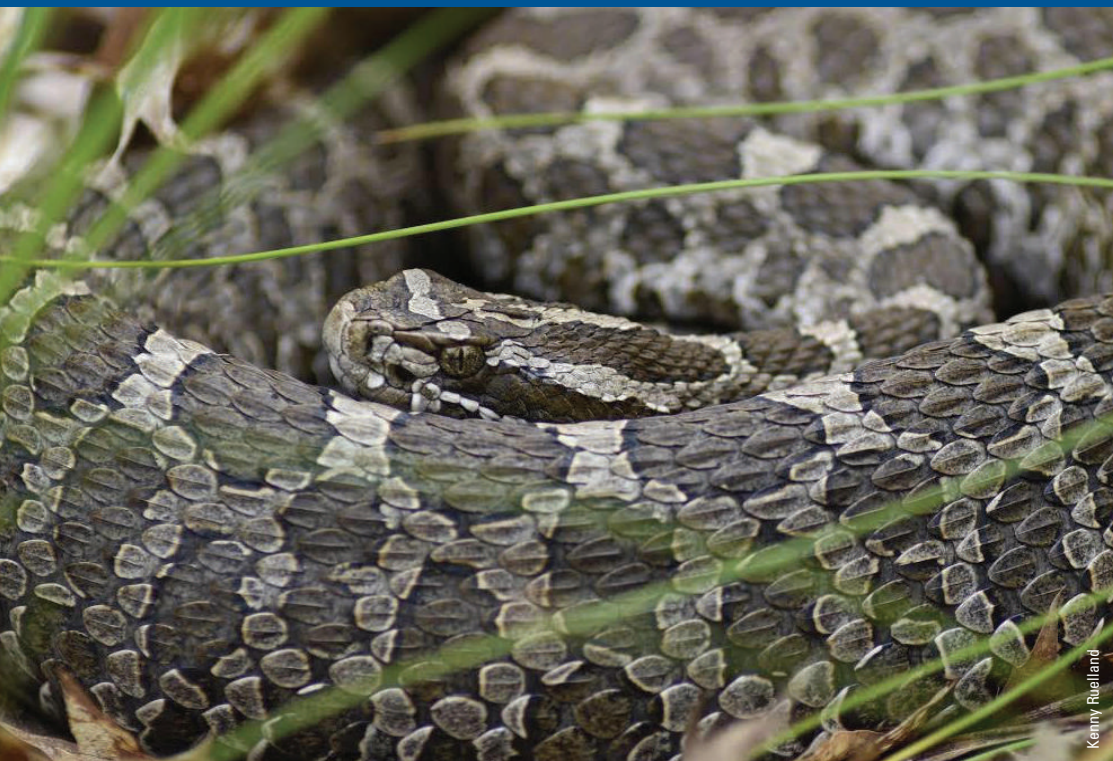




Linda Gillespie



PROTECTING the **WILDERNESS** of our **UNIQUE ARCHIPELAGO**



Kenny Ruelland



Wendy Wingfelder



Jan Dowling



# Conservation LEADERSHIP on Georgian Bay

A CONSERVATION PLAN FOR  
**21,000 acres**

PRIORITIZED  
**15 key**  
specific habitat types

**2,000 kids**  
have attended  
**Conservation Quest**

**2,000**  
annual visits  
to recreational  
community properties

LAND BASED  
**STUDIES**  
(scientific research programs)

Partnered  
with  
over **15**  
SCIENCE BASED ORGANIZATIONS



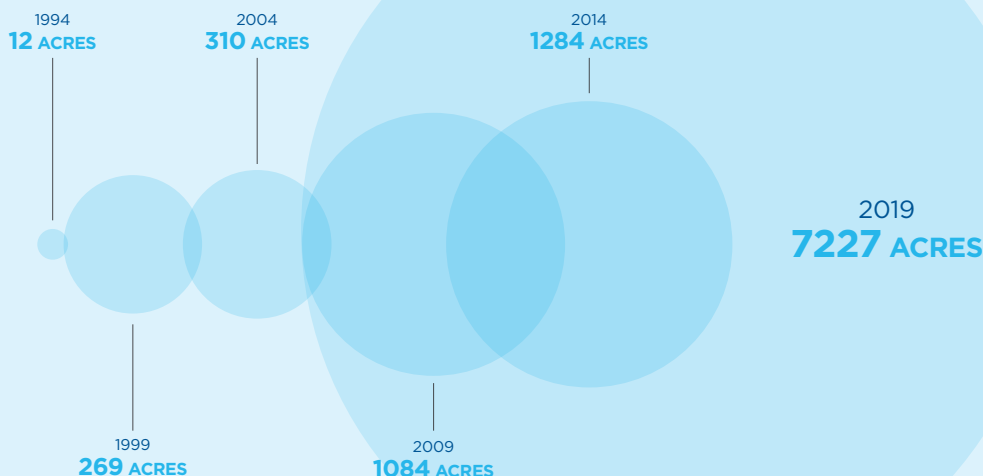
PROTECT  
**7,227 acres**  
of  
nature reserves

**50**  
species at risk  
**8**  
provincially  
significant wetlands

Community  
recreational spaces  
**880 acres**

**130+**  
PROPERTY  
STEWARDS

## ACREAGE OVER THE YEARS



## GEORGIAN BAY SPECIES AT RISK



**20**  
birds



**13**  
reptiles and  
amphibians



**5**  
mammals



**5**  
plants



**3**  
insects



**3**  
fish

# DEAR FRIENDS

**Indeed, these are extraordinary times we are living through.**

**We have been self isolating at the Georgian Peaks Ski Club near Thornbury. One of my daily routines is to hike the hills which take me to the top of the escarpment. On sunny days, the views of Southern Georgian Bay are stunning - the water is the colour of turquoise! As I stare to the horizon my thoughts turn to what we all hope are the summer months ahead at the cottage. I'm sure like many of you, I remain positive that will make the journey up north soon.**

We cannot thank you enough for the dedicated support that you have shown to Georgian Bay's natural world. In these times of global uncertainty, it is a comfort to look around at our community and the tremendous things we can accomplish when we come together.

2019 was an exceptional year for conservation on Georgian Bay. In April, we announced the Tadenac Conservation Initiative - at 5,400 acres, the Georgian Bay Land Trust's largest-ever protected area. Supported by a grant from Canada's Nature Fund and the Echo and McLean Foundations, this project protects one of Georgian Bay's most biodiverse places, where a rich mosaic of habitats provide homes to at least 32 species at risk. A foundation to support ongoing scientific research in perpetuity is part of the project, meaning that conservation everywhere will benefit from work done here on Georgian Bay.

A second milestone came in the fall, when a collective grant to improve outcomes for species at risk was awarded to the Georgian Bay region as part of Canada's Community Nominated Priority Places program. Over the next four years, we will be working with the Georgian Bay Biosphere Reserve, Magnetawan First Nation, Shawanaga First Nation, and other community partners to improve

conservation mapping and planning tools for our coast, scale up species-specific research, and implement on the ground mitigation strategies to help our at-risk species thrive.

This past year was also an opportunity to strengthen our core programming, with increased work in invasive plant removal (including clearing the massive Phragmites stand at Giant's Tomb!), more educational events for kids and adults, and new protected properties on Georgian Bay and Blackstone Lake. We continue to work hard to spread the word about conservation, and help individuals and communities throughout our coast protect the places they love.

We are inspired and energized by the successes of 2019, and look forward to continuing the momentum with you in 2020.

Hoping you and your families remain safe and healthy.



**DAVID DORITTY**  
*Board Chair*

# PLAN

## Using science to identify and prioritize key habitats for conservation so that species are protected and our coastal ecosystem remains resilient

In 2019 we continued the development of the GBLT's Natural Area Conservation Plan which targets areas for protection based on:

biodiversity	habitat diversity	density of species at risk present
rare species	proximity to other protected areas	presence of special habitats
ecosystems present	providing resilience to climate change	ability to connect
corridor for species movement		

The above data were mapped onto a GIS system which produces maps with a resolution down to 5m for most of the data. The layers were then used to do analysis and conservation scoring. This project will be completed in June 2020 and GBLT will be implementing the new plan at that time.

Corridor and connectivity maps and conservation scoring maps generated from the above will allow our land trust to know which land parcels provide the best:

- contribution to our natural environment
- resilience to climate change
- natural corridors for species interbreeding and viability
- conservation value for protecting specific species or species guilds

Corridors are important: they allow different populations of a species in one protected area to genetically connect with species in a nearby protected area. Corridors can also be coastal, connecting groups of islands.

In 2019 we also began work on another Conservation Plan, this one directed solely at the Georgian Bay biosphere's species at risk. The process used here is a novel one developed by GBLT which defines new habitat zones specific to species at risk. The plan connects these zones through new GIS methodologies and its generated analysis and resultant mapping will identify areas where conservation efforts need to be directed. This work is part of the GBLT's contribution to the four-year collective Community Nominated Priority Place grant received by the GBLT, GBBR, and First Nations from Environment and Climate Change Canada.

- Bill Lougheed, Executive Director

# PROTECT

**Securing ecologically significant lands to protect habitats and species  
and to create open spaces for community enjoyment**



## **TADENAC CONSERVATION INITIATIVE • 5,400 ACRES**

The Tadenac Conservation Initiative is a 5,400 acre easement at the heart of one of Georgian Bay's largest undisturbed natural areas. Its highly diverse terrestrial and aquatic habitats are home to 32 species at risk including the Blanding's Turtle, Algonquin Wolf, and Bald Eagle, and 15 provincially rare plant species. It also includes two Provincially Significant Wetlands which provide nesting habitat for waterfowl and critical fish spawning and nursery areas used by endangered Lake Sturgeon. Made possible through the support of Canada's Nature Fund, this project plays an important role in region-wide conservation by contributing to a larger protected habitat corridor along the eastern Georgian Bay coast. We are extremely grateful to everyone who contributed to making the Tadenac Conservation Initiative a reality in 2019.



**GRANT MOOSE BAY RESERVE**  
**13.4 ACRES**  
**WAH WAH TAYSEE**  
**DONATED BY DOUG AND RUTH GRANT**



**ONE BEAR ISLAND**  
**2.15 ACRE EASEMENT**  
**MANITOU**  
**DONATED ANONYMOUSLY**



**STRONGHOLD RESERVE**  
**21 ACRE EASEMENT**  
**BLACKSTONE LAKE**  
**DONATED ANONYMOUSLY**



# STEWARD

## Working alongside communities to monitor and maintain wilderness lands forever

Looking after our protected properties is the most important part of our work, and our fantastic team of volunteers and staff did a wonderful job keeping things clean and healthy in 2019. From research and monitoring of at-risk species, to garbage and invasive plant cleanup, to interacting with visitors, our stewards were once again an indispensable part of our conservation work.



**61** protected properties monitored by staff and **130+** volunteer stewards



**4** invasive plant species removed from **7** properties including large-scale phragmites removal at Port Severn Wetlands, Giant's Tomb, and Sandy Island

### A DAY IN THE LIFE OF A STEWARD:

“Beautiful afternoon, light wind, ideal for kayaking. Lush iris and cranberry. Full of promise. Just one animal - watersnake sunning on rock. Trash: large piece of blue Styrofoam, strapped to my kayak and removed, with one plastic bottle, one shiny red balloon.”

JANE GLASSCO, WEST LOOKOUT RESERVE, JUNE 18TH 2019

**4** summer students interacted with visitors, conducted property maintenance, and assisted with **3** research projects



**201** property reports submitted

Jane-Anne Campbell

# LEARN

**Advancing scientific knowledge by collaborating with academic partners and using our properties to support research in the biosphere**



## **EASTERN WHIP-POOR-WILL AND COMMON NIGHTHAWK STUDY WITH THE NORRIS LAB AT THE UNIVERSITY OF GUELPH**

PhD student Elora Grahame is discovering new information about the nesting habits of Eastern Whip-poor-wills and Common Nighthawks by using GBLT-funded Motus towers to track these at-risk birds.



## **ENDANGERED SPECIES HABITAT SURVEYS WITH BLAZING STAR ENVIRONMENTAL**

In a new focus for 2019, we conducted intensive surveys to learn more about the prevalence and habits of endangered species in key habitats on the Georgian Bay coast.



## **MASSASAUGA GESTATION SITE MONITORING WITH THE GEORGIAN BAY BIOSPHERE RESERVE**

Monitoring seven suspected Massasauga gestation sites contributes to long-term data on the breeding success of these threatened snakes.



## **MOTUS WILDLIFE TRACKING PROGRAM WITH BIRD STUDIES CANADA**

The GBLT's five Motus wildlife tracking stations provide crucial data on the movements of migratory birds and insects to researchers around the world.



## **BAT MONITORING WITH ONTARIO LAND TRUST ALLIANCE**

As part of a province-wide survey into the abundance and distribution of four endangered bat species, the GBLT monitored bat activity through a passive bat call detector.



# INSPIRE

## Bringing communities together and cultivating the next generation of conservationists that will protect our land and species

Inspiring people to know and care about their environment is one of the most rewarding aspects of our work. Year round, we engage with kids and adults, passionate naturalists and curious learners, to share what makes Georgian Bay special and talk about the role we all play in looking after our home. Here are a few highlights from 2019:



### LANDMARK SPEAKER SERIES

inspired and educated audiences with topics including Canadian conservation, climate change, and bird migration



**500+ KIDS** learned about their place in the natural world at Conservation Quest



### WALKING FOR WILDERNESS

introduced participants to the biodiversity of Beausoleil Island while raising \$10,000+ for conservation



### 16 SUMMER EVENTS

introduced kids and adults alike to the wonders of the natural world



### THE KING FAMILY BURSARY

brought artists and scientists to learn and share about this special place



**3,600+** people learned about the Georgian Bay environment year-round through social media



# FINANCIALS

## Georgian Bay Land Trust

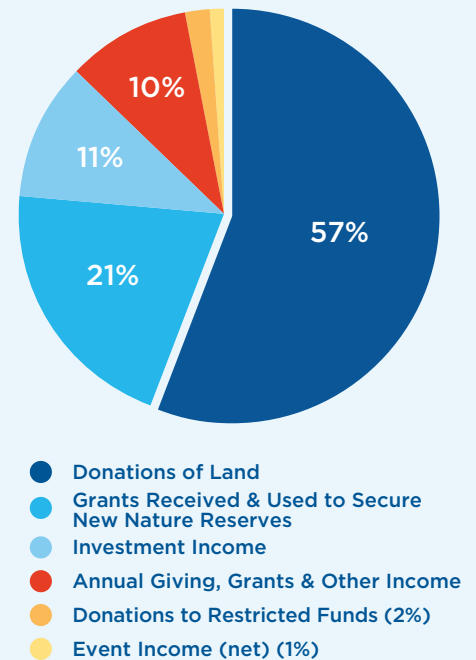
### STATEMENT OF FINANCIAL POSITION | Year Ended December 31, 2019

<b>ASSETS</b>	<b>2019</b>	<b>2018</b>
<b>CURRENT</b>		
Cash	210,058	201,291
Sundry receivables	18,930	19,834
HST rebate receivable	8,661	10,521
Prepays	13,564	21,684
	<u>251,213</u>	<u>253,330</u>
Stewardship Funds and Endowment	1,585,593	1,547,893
Sheila MacFeeters Memorial Fund	200,288	190,064
Wally and Marilyn King and Family Fund	115,115	115,115
Conservation Lands Securement Fund	553,877	207,805
Conservation Working Fund	650,000	450,000
Property and Equipment	37,354,061	33,139,781
	<u>40,710,147</u>	<u>35,903,988</u>
<b>LIABILITIES</b>		
Accounts Payable and Accrued Liabilities	39,460	30,438
Deferred Contributions	-	13,043
	<u>39,460</u>	<u>43,481</u>
<b>NET ASSETS</b>		
Unrestricted Net Assets	211,753	209,849
Internally Restricted Net Assets	1,203,877	657,805
Externally Restricted Net Assets	1,900,996	1,853,072
Net Assets Invested In Property	37,354,061	33,139,781
	<u>40,670,687</u>	<u>35,860,507</u>
	<u>40,710,147</u>	<u>35,903,988</u>

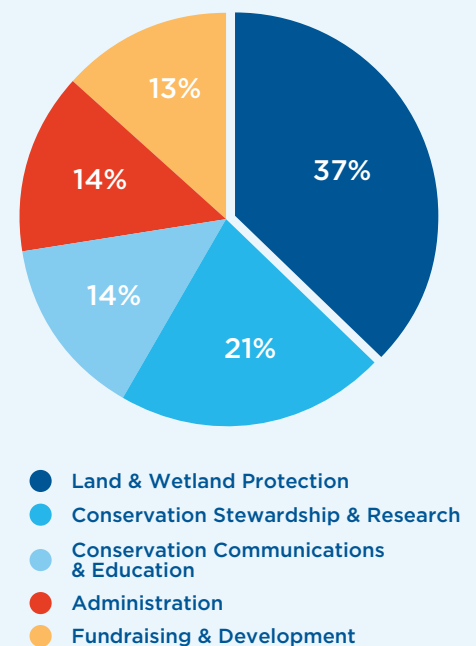
### CONDENSED STATEMENT OF INCOME & EXPENDITURE | Jan 1 to Dec 31, 2019

<b>OPERATING REVENUE</b>	<b>2019</b>	<b>2018</b>
Donations & Grants	517,579	551,872
Grants for New Nature Reserves	1,131,908	-
Georgian Bay Book Sales (net)	2,710	13,742
Events (net)	29,472	44,348
Investment	587,484	14,407
	<u>2,269,153</u>	<u>624,369</u>
<b>OPERATING EXPENSES</b>		
Land & Wetland Protection	227,838	232,201
Conservation Stewardship & Research	128,172	133,511
Conservation Communications & Education	86,318	108,455
Fundraising	81,827	80,774
Administration	85,442	21,626
	<u>609,597</u>	<u>576,567</u>
Excess Revenue over Expenses	1,659,556	47,802
Transfer To Stewardship and New Nature Reserves Securement Funds	(525,744)	(28,931)
	<u>1,133,812</u>	<u>18,871</u>
<b>CAPITAL REVENUE</b>		
Donations: Externally Restricted Funds	32,924	208,214
Donations: Internally Restricted Funds	56,700	26,983
Value of Land Secured	4,192,908	751,178
	<u>4,282,532</u>	<u>986,375</u>

### REVENUE



### EXPENSES



Georgian Bay Trust Foundation Inc.  
(operating as Georgian Bay Land Trust)  
Reg. Charity # 13195 8811 RR0001 Complete audited  
financial statements are available upon request

# PARTNERS

American Friends of Canadian Land Trusts  
 Bayfield Nares Islanders Association  
 Birds Canada  
 Blackstone Lake Cottagers Association  
 Blazing Star Environmental  
 Canadian Land Trust Working Group  
 Cognashene Cottagers Association  
 Crane Lake Association  
 Eastern Georgian Bay Stewardship Council  
 Environment and Climate Change Canada  
 Environment Canada Ecological Gifts  
 Program  
 Georgian Bay Association  
 Georgian Bay Biosphere Reserve Inc.

Georgian Bay Forever  
 Georgian Bay Today  
 Georgian Bay Township  
 Great Lakes Basin Conservancy  
 Honey Harbour Association  
 Huronia Community Foundation  
 Iron City Fishing Club  
 Madawaska Club at Go Home Bay  
 Magnetawan First Nation  
 McMaster University  
 Nature Conservancy of Canada  
 North Channel Preservation Society  
 Ontario Land Trust Alliance

Ontario Ministry of Natural Resources  
 and Forestry  
 Pointe au Baril Islanders' Association  
 Parks Canada - Georgian Bay Islands  
 National Park  
 Parry Sound Chamber of Commerce  
 Sans Souci Copperhead Association  
 Shawanaga First Nation  
 South Channel Association  
 Township of the Archipelago  
 University of Guelph  
 Wah Wah Taysee Association  
 West Carling Association  
 White Squall

## Many Thanks to our Generous Sponsors





# THANK YOU

## Cumulative Giving

### LUMINARIES

Over \$500,000

John & Margaret Catto

### VISIONARIES

Over \$300,000

Geordie Dalglish Family  
Robert & Julia Foster  
Wally & Marilyn King

### AMBASSADORS

Over \$200,000

Echo Foundation  
Sheila MacFeeters & Michael Williams  
The W. Garfield Weston Foundation  
Annabelle White

### CHAMPIONS

Over \$100,000

Jean Hughes  
The Langar Foundation  
Estate of William Marrow  
McLean Foundation  
Robin & Robert Ogilvie  
Sandy & Marilyn Phillips  
Bill & Carol Prior  
Tom & Pamela Scoon  
Estate of Kay Sloan  
TD Bank  
John & Josie Watson  
Galen & Hilary Weston

### PIONEERS

Over \$50,000

Rick Balaz  
Jennifer Ivey Bannock  
Dr. T. James & Maureen Cooper  
Bruce Croxon & Debra Thier  
Fred & Sue Dalley  
Elizabeth Davidson  
Ann & David Doritty  
Jon & Shelagh Grant  
Stephen & Catherine Griggs  
Jackman Foundation  
Donald & Lorraine Lawson  
Wendy Matheson  
Paul & Martha McLean  
Payne Marine  
Francie & John Pepper  
Samuel Family Foundation  
Dave & Bev Stager  
John & Chris Stark  
Janny Vincent

### TRUSTEES

Over \$20,000

Martin Abell & Kim Dalglish  
John & Karen Agnew  
David Anderson  
David & Shelagh Blenkarn  
Ian & Margaret Carmichael  
Stephen & Jane Chisholm  
William & Patricia Culp  
Jennifer Dattels  
Ruth & Neil Davis  
Michael & Honor de Pencier  
Desmasdons Boatworks  
John & Sybil Eakin  
Sted & Robin Garber  
Georgian Bay Spirit Co.  
Dr. Ralph S. & Caroline Grose  
Doug & Sue Grundy  
Douglas Hall  
Elizabeth Hall-Findlay  
John Hartman  
Adam Howard & Janet Neilson  
Ernest Howard  
Iron City Fishing Club  
John Irving & Janet Turnbull  
Ted & Alice Kernaghan  
Peter Koetsier & Wendy Wingfelder  
Kopas Family Foundation  
The Lawson Foundation  
LeVan Family Foundation (a fund held within  
the Oakville Community Foundation)  
Barbara & Dougal Macdonald  
Steve Mason Family  
The McDonald Family  
Ada & Hugh Morris  
Murray & Susan Armitage Foundation  
at the Toronto Community Foundation  
Nosreap Family Foundation  
Michael & Agneta Owen  
Norm Playfair & Kim Kormack  
Emery & Tara Prior  
Rob & Val Thompson  
Jan Ruby & Mary Thomson  
William J. & Meredith Saunderson  
William & Joy Sayers  
Stewart H. (Nick) Steffey Jr.  
Topper Linen  
Janet Veale  
Phil Wilson  
Anonymous

### Land & Easement Donors

Douglas Alexander  
John Austin  
Betsy Bascom  
Gordon Bongard  
Kim Bozak & Philip Deck  
Michael Steven Brown  
Catherine, Doug, Gillian & Lesley Cameron  
Glen & Jane-Anne Campbell

John & Margaret Catto  
Nancy & Ted Christie  
Jennifer Dattels  
Patricia Davidson  
Bill Detmer & Angel Lillard  
Caroline Duncanson  
Anna Edels  
Edgar Edels  
Kevin Gillen  
Lyn Gillespie  
Doug & Ruth Grant  
Joan Grierson  
Stephen Gunn & Patti Bunston-Gunn  
Patricia & Bill Hamilton  
William & Pat Harris  
Philip & Nancy Havens  
William & Marion Holton  
Adam Howard & Janet Neilson  
George Hume  
Jay Ingram  
Mary Elizabeth Jeffries  
Lynn & Ned Jessen  
Cynthia & Peter Kemerer  
John Kleinschmidt  
Barb, Jeff & Jim Kofman  
Elizabeth, Hugh & Joan MacCallum  
Jim & Jill MacKenzie  
Dr. Cortland Mackenzie  
Manitou Association  
Stephen Martin  
McCarthy Family  
C.C. McGibbon  
Ian & Maureen McGibbon  
Julia E. McLaughlin  
Mary McPherson  
Michael John Mitchell  
Polly E. Naughton  
Percy & Mary Nelson  
David, Evelyn, Kimberley, Margaret,  
Martha & Peter Newell  
Northey Family  
Jack & Maria Nowack  
Oak Bay Developments Inc.  
Pointe au Baril Islanders' Association  
Jim & Paula Preschlack  
Joan Robinson  
Brian Rogers  
David Russell  
William H. Russell  
Jane Schneider  
Tom & Pamela Scoon  
Marilyn & Paul Shepherd  
Craig Shibley & Caroline Coulson  
Bob & John Suter  
Rob & Val Thompson  
Robert Thomson  
George Wilson  
Donald & Jane Wright  
Donald Paton Wright  
Barbara Zimmerman  
Anonymous Donors

# DONORS

**Your generous donations ensure that the spectacular wilderness of our unique archipelago is protected in perpetuity. We are honoured to celebrate the following supporters who made gifts from January 1 through December 31, 2019.**

## PROTECTED PROPERTIES

*Our deepest appreciation to those who donated property or conservation easements, or made contributions for land protection projects in 2019:*

**Grant Conservation Reserve, Wah Wah Taysee**  
Doug & Ruth Grant

**One Bear Island, Manitou**  
Anonymous

**Stronghold Reserve, Blackstone Lake**  
Anonymous

**Tadenac Conservation Initiative**  
Echo Foundation  
Environment & Climate Change Canada  
The McLean Foundation

**Land Acquisition Fund**  
Margaret & John Catto  
Nancy & Brien Dane  
Tom & Pamela Scoon  
Ida Lynn Stankie

## PLEDGE FOR THE BAY

*The five-year Pledge for the Bay enables the Land Trust to better plan for the future in land protection, stewardship, education, and outreach, knowing resources are in place from committed supporters. Thank you to these supporters for your generous pledges:*

**Leader of the Bay (\$25,000 over 5 years)**  
Jennifer Ivey Bannock  
Margaret & John Catto  
Dr. T. James & Maureen Cooper  
Fred & Sue Dalley  
Ann & David Doritty  
Doug & Sue Grundy  
Donald & Lorraine Lawson  
Mason Family Foundation  
Paul & Martha McLean  
Robin & Robert Ogilvie  
Francie & John Pepper  
Mr. & Mrs. Sanford Phillips  
Tom & Pamela Scoon  
Jan Ruby & Mary Thomson

## STEWARDSHIP FUNDS

*Stewardship Funds are long-term investments that support the ongoing annual stewardship of our protected properties. Thank you to those who made contributions in 2019:*

**Legacy Stewardship Fund**  
Yvonne Pigott  
David Rosen

**Andy Griggs Memorial Fund, Pointe au Baril**

**Dave & Bev Stager Sandy Island Stewardship Fund, Sandy & Martyr Islands**

**Douglas & Marylon Alexander Stewardship Fund, Wah Wah Taysee**  
Michael Wenban & Virginia Froman-Wenban

**Watson Family Stewardship Fund, Cognashene, Go Home Bay & Honey Harbour**  
Caroline Grose  
Peter S. Watson

## WALLY & MARILYN KING FAMILY FUND

*The Wally & Marilyn King Family Fund supports initiatives that increase knowledge and appreciation of the environment, culture, and communities of eastern Georgian Bay and the North Channel. Thank you to those who made contributions in 2019:*

Wally & Marilyn King

## ANNUAL SUPPORTERS

*Our achievements are shared with our generous supporters who care about the conservation of Georgian Bay as much as we do. Thank you to all those who made contributions in 2019:*

**\$500,000 - \$999,999**  
Environment & Climate Change Canada

**\$100,000 - \$249,999**  
Echo Foundation

## \$50,000 - \$99,999

Margaret & John Catto  
Great Lakes Basin Conservancy

## \$25,000 - \$49,999

Rick Balaz  
Estate of Sheila MacFeeters  
The McLean Foundation

## \$10,000 - \$24,999

Georgian Bay Spirit Co.  
The Langar Foundation  
The Lawson Foundation  
The McDonald Family  
Nosreap Family Foundation  
Mr. & Mrs. Sanford Phillips  
Tom & Pamela Scoon

## \$5,000 - \$9,999

Jennifer Ivey Bannock  
Bowman Family  
Dr. T. James & Maureen Cooper  
Fred & Sue Dalley  
Ann & David Doritty  
Doug & Sue Grundy  
Mary Hudson  
Iron City Fishing Club  
Wally & Marilyn King  
Valarie Koziol  
Donald & Lorraine Lawson  
Mason Family Foundation  
Paul & Martha McLean  
Estate of Hugh Morris  
Robin & Robert Ogilvie  
Francie & John Pepper  
Jan Ruby & Mary Thomson  
Jane Schneider  
Nick Steffey  
Rob & Val Thompson  
James & Margot Tushingham  
George & Janet Wishart  
Barbara Zimmerman

## \$1,000 - \$4,999

Murray & Susan Armitage  
Foundation at Toronto Foundation  
The Assaly Campbell Foundation  
John Austin  
Jeff Barrett  
Matt Barrett  
C. Derek Bate  
Douglas Brock  
Douglas & Margarete Carr  
Bill & Julie Deeks  
Michael & Honor de Pencier  
Michael & Maureen Douglas  
Jason Drysdale

Paul John Eakin  
Andrew Fabens III  
Robert & Julia Foster  
Mr. & Mrs. Stedman Garber  
Dr. Ralph & Caroline Grose  
Elizabeth & John Hackett  
Martha Hall Findlay  
Pat & John Hardy  
Adam Howard & Janet Neilson  
Ernest Howard  
The Hutton Family  
Jackman Foundation  
Peter & Marjorie Kelk  
Peter Koetsier & Wendy Wingfelder  
Jean Koetsier-Adams  
Nancy Lang  
Robert & Patricia Lord  
Diane MacDiarmid  
Barbara & Dougal Macdonald  
Ruth Mandel  
Sue & Biff Matthews  
James A. McIntyre  
C. Ann McKibbin  
Blake & Janet Murphy  
Evelyn B. Newell  
Mr. & Mrs. Scott O'Connell  
Norman Playfair  
Alex & Kate Ramsay  
Cam Richardson  
William & Meredith Saunderson  
Joy & William Sayers  
Mark Smith & Anne Larson  
Michael & Sonja Stewart  
Audrey Stratton  
Michael & Veronica Stubbs  
Michael & Melinda Tabor  
Cindy Tripp  
Janet Walker & Family  
George Wark  
John & Josie Watson  
Peter S. Watson  
Donald & Sandra Wilson  
Rob & Fran Woodrooffe  
Richard Woodruff & Cath Devlin

## \$500 - \$999

Akler Browning LLP  
Diane & Roger Ashton  
Reed Ballon  
Allan Barnes & Shirley Coleman  
Donald Bartlett  
Amy Beament  
Penelope Bell  
Susan Boddington  
Gary Bouck  
Catherine Bradley  
David Burt



Glen Campbell  
 Nancy Christie  
 Peter & Cathy Cooper  
 Susan Cross  
 J. Cory Curtis & David Adams  
 Nancy & Brien Dane  
 Michael Eakin  
 Andrea Ferin  
 Douglas Hall  
 Patricia Hamilton  
 David Harrison &  
 Cathy Le Feuvre  
 Hatherly Martin Professional  
 Corporation  
 Susan & David Herbold  
 Bruce & Lynn Hernandez  
 Jim & Anne Hilmer  
 Tait Hyland  
 David Kaufman & Marlene Bigg  
 Cynthia & Peter Kemerer  
 Marco Leyton & Katie Russell  
 Bill Loughheed  
 Janet & George Loughheed  
 Nancy Matheson  
 Mark & Judy McLean  
 M.R. McLeod  
 Scott & Ellen Moody  
 Barbara Parton & Juliet Carey  
 Maggie Pepper  
 William Petrie  
 Raymond James Ltd.  
 Katy Rea  
 Mr. & Mrs. R.G.H. Robertson  
 Nancy McCuaig Rogers &  
 Jim Rogers  
 Carolyn Rymell  
 Rob & Sally Sarjeant  
 Gregg Scott  
 Mr. & Mrs. W.A. Scott  
 Marilyn & Paul Shepherd  
 Ted Simmonds  
 Kathy & Rick Southee  
 Tom & Marilyn Stark  
 Van Tulleken Family  
 Judy & Larry Ward  
 Ronald & Nancy Webb  
 Robert Weekes  
 Marion & Don Wheeler  
 Mark & Sarah Whitener  
 Wood Hart Fund at  
 Toronto Foundation  
 George & Helen Will  
 Anonymous (1)

#### **\$150 - \$499**

John Abbott  
 Pam Aitken  
 Sharon & Brian Antaya  
 Marla Ashmore  
 Peter M. Baines  
 Clair Balfour  
 Lisa Balfour Bowen  
 Don Bannister  
 Colette & Tom Barber  
 Graeme Bate  
 James A. Beatty  
 David & Christine Bennett  
 Jim Blackwood  
 Scott Blair  
 Sam Blyth  
 Sandy Boeckh  
 Sandy & Gloria Boyd

Robert & Barbara Bradey  
 Martha Breithaupt  
 Hank Brunnader  
 Maureen & Don Buchanan  
 Gordon & Karolyn Burkhart-  
 Schultz  
 Linda Cameron  
 Camp Hurontario  
 Barbara Chisholm &  
 Thomas Miller  
 Brigid Clesham  
 Michael Cruickshank  
 Patricia Curley & John Otter  
 Lloyd Davenport  
 Gord & Margie Davidson  
 Bob Davie & Jean Richardson  
 Neil Davis  
 David Denison &  
 Maureen Flanagan  
 The Devine & Duncan Families  
 Robert & Caroline Duncanson  
 Mary Lynne Eakin  
 Patrick Edwards  
 Gillian Faulkner  
 Amanda Fracz & Dallas Taylor  
 Mary Pat Frey  
 Jean Friedel  
 Dr. Campbell & Leah MacArthur  
 Robert & Cynthia Gemmell  
 Jane Glassco  
 Michael & Michelle Gordon  
 Great Lakes Sea Kayaking  
 Association  
 Brooks Greer  
 Elliot Halparin  
 Elizabeth Halpenny  
 John Hamilton  
 David & Mary Harvey  
 Barbara Hayes  
 Ian Hayes  
 Ian Henderson  
 John Hill  
 Adam Horodnyk  
 Intrinsic Corp.  
 Rod & Joanne Jones  
 Natalie Kemerer  
 Elinor Knight  
 Marg Koetsier  
 Sarah Koetsier  
 Ryan Kroeker  
 Susan Lanier  
 Jim Leavens  
 Marie Lunny  
 John & Carol Macfarlane  
 Margot Mackay  
 Bruce MacLellan & Karen Girling  
 Mary Anne MacLeod  
 Wendy Matheson  
 David & Joan Matthews  
 John McAllister  
 Ron & Anne McClure  
 William C. McCoy  
 Nancy & Doug McFadden  
 Regan & Rebecca McGee  
 Ian & Maureen McGibbon  
 Rory McGillis  
 Rebecca McWhirter  
 Robert Miller & Dana Hooper  
 Sandy Mingay  
 Pam & John Mitchell  
 Sarah Mitchell  
 Bill Molesworth

Sandra & Robert Moos  
 Molly Mulloy  
 Craig & Pam Murchison  
 Stephen & Hope Murphy  
 L. Jackson & Linda Newell  
 The Pathfinder Foundation  
 G. Pederson & Associates  
 John Pepperell  
 Christopher & Vicki Phillips  
 Yvonne Pigott  
 Lloyd & Pat Posno  
 Ruth Reisman  
 Al Sandilands  
 Tony Santoro  
 Roma Sapijonis  
 Peter Scandrett  
 Roy Schatz  
 Peter & Dallis Smith  
 Susan Smithen  
 Maureen & Wayne Squibb  
 Sheila & Edmund Tierney  
 Phillip & Maureen Tingley  
 The John & Victoria Tremayne  
 Family Foundation  
 Jadzia Von Heymann  
 Denise & Kevin Walker  
 Roger Wallis  
 Patrice Walsh  
 Kathleen E. Wells  
 Michael Wenban & Virginia  
 Froman-Wenban  
 David White  
 Sarah White  
 Jane Whitwell  
 Doug & Morag Wilson  
 Peter & Susan Winnell  
 Claudette Young  
 Valerie Zawilski  
 Anonymous (8)

#### **\$1 - \$149**

William & Jane Abbott  
 Peter & Beth Adams  
 Tom & Patty Adams  
 Jennifer Allen  
 Lindsay Almeida  
 Kevin & Dianne Ambrose  
 Patricia Anderson  
 Christine & Emily Arbic  
 John Arbour  
 Nancy & Michael Arnoldi  
 Matthew Atherton  
 Rebecca & Daniel Axler  
 Gregg Badger  
 Sandy Baker  
 Scott Ballon  
 Gini & Randy Barbato  
 Douglas Barrett &  
 Hattie Reisman  
 Bruce & Lesley Barton  
 Gregor Beck  
 Wendy Beck  
 Drew Belshaw & Susan Charles  
 Larke & Rainer Bemmann  
 Suzanne Bennett  
 Brenda & Kerry Benson  
 John Berg  
 The Bettins  
 Judith Bialkowski  
 Sandra Black  
 Thomas Bogardus &  
 Robert De Haan

Trish Bolton  
 Alex Bonebakker  
 Anne Boright  
 Mary Lou Borrón Montanera  
 Robert & Ann Bosley & Family  
 Dom Bovalino  
 Steven Bradford  
 Coco Brennan  
 Jack & Lani Broadbent  
 Joyce Brooks  
 Janet Brough  
 David & Sonja Brown  
 Richard Brown  
 Eva Buchanan  
 Ronnie Burbank  
 Sue Burford  
 Stephanie Cable  
 Neil & Judy Cameron  
 Robert & Martha Campbell  
 Carole Carella  
 Jane Carnwath  
 Lindsay Carpenter  
 Jeanne Carter  
 Ross & Susan Carter  
 Joyce Chesnut  
 Jane Chisholm  
 Tom & Chris Claflin  
 Judith Clark  
 Ann Clarke  
 Robert Clegg  
 Mary Coke  
 Ann & Peter Conacher  
 Wendy Cooper  
 Sherry Couttie-Griffin  
 Marg & Jim Cowan  
 The Crane Family  
 Patricia Cross  
 Bruce & Patricia Cutts  
 Cathy Dale  
 Fraser Dane  
 Katherine Dawson  
 Brendan Dellandrea  
 Roman & Virginia Dementavicius  
 Tom Denune & Teresa Long  
 Benjy & Molly Diesbach  
 Mac & Debbie Donley  
 Marguerite Doritty  
 Mary Dove  
 Michael & Cameron Drinkwater  
 Pat & Ruth Ducharme  
 Sara Duncanson  
 Kara & Nick Eaves  
 Leigh Eisenberg  
 Gerald Enchin  
 William Este  
 Derek Etherton  
 Mark Felepchuk  
 Greg Ferguson  
 Carly Fidler  
 Robert & Anne Fisher  
 Marnie Fleming  
 Beth Foster  
 Bill Fowler & Mary Wolf  
 Lisa Fowler  
 Susanne Gage  
 A. Harold Garfinkle  
 Susan Garskey  
 Diane & Stan Gasner  
 Megan Gatzsch  
 James Gee  
 Lynda & Mario Golini  
 Meg & Wilf Goodman

Jeff & Patty Goodwin  
 Tim & Barbara Gorka  
 D.F.H. Green  
 Barbara Greer  
 Mary Greer  
 Milan Gurin  
 Linda Hall  
 Lisa Harding  
 Nancy & Hugh Hardy  
 Brad Harris  
 Patricia Harris  
 Jean Harrison  
 Scott Harrison  
 Craig & Neidra Hart  
 David & Lynn Haylock  
 Neil Hayward  
 Rick Hayward  
 Philip Hebert & Victoria Lee  
 Linda Heron  
 Gordon & Karen Hewlett  
 Susan Hickling  
 Tim & Judy Higgins  
 Mark & Marilyn Hiseler  
 Nancy Holloway  
 Janine Holman  
 Jim & Lisa Houston  
 Sharon Hudson & Family  
 John & Elinor Hueton  
 Elizabeth Hugessen  
 Morgan & Sheila Hultquist  
 George Hume  
 Julie & Bob Hunter  
 Tara Hunter  
 Jen Irwin  
 Robert Jarvis  
 Wayne Jefferey  
 Jennifer Jeffrey Deacon  
 Allan & Rhonda Johnstone  
 Kathy Johnstone  
 Duncan & Robyn Jones  
 Robin Jones  
 Karen Kaizer  
 Dot & Terry Keenleyside  
 Robbie & Dorinda Keith  
 The Kenny Family  
 Jen Kernaghan  
 Anthony & Mary Ketchum  
 Michael & Margaret Ketchum  
 Ria Khalifa  
 Philip & Catherine Kidston  
 Rupert Kindersley  
 Midford Kitchen  
 William Kitchen  
 Jennifer Koetsier  
 Kristin Koetsier  
 Jennifer Koivu  
 Peter Komlos  
 Liz Korber  
 Martha Kovacs Angus  
 Robert Krahn  
 Jeff & Cindy Kuchman  
 Dave Kwinter  
 Nena LaMarre  
 Valerie Lang  
 John Lawler  
 Edmund Lea  
 Wendy Lee  
 Diane Leuty  
 John & Robin Lindstrom  
 Nancy Lohr & Claudia Borders  
 Gabrielle Lotimer

Jane Loughborough  
 Bob & Heather Macdonald  
 Andrew MacDougall  
 Jim & Jill MacKenzie  
 Jane Maher  
 Ruth Main  
 John & Heather Mallett  
 Gord Malvern  
 T.B.K. Martin  
 Mary Lou Matthews  
 William & Elizabeth Maxon  
 Rhona McCallum  
 M.S. Gail McCleery  
 T.K. & Emily McClintock  
 Tom McConnell  
 Michelle McCool  
 Reet McGovern-Shearer & Jeffrey Shearer  
 Sandra & Mark McGugan  
 Julia McLaughlin  
 Bev McNabb  
 Jenny McVean  
 Stephanie Meeuwse  
 Sara Menzel  
 Joe Mesenburg  
 Carolyn Miller  
 Eric Miller & Family  
 Keith Milne  
 Anne Marie Moliski  
 Dianne Monnot  
 Joyce & Alec Monro  
 Anne D. Morison  
 Fred & Jane Munn  
 Cynthia Neely & Tom Davies  
 Natália Neves & Wayne Nelissen  
 David & Kimberly Newell  
 John Newell  
 Marla & Jeff Newman  
 Mark & Betty Norris  
 Ron Norris  
 Mary Beth Norton  
 Mrs. Maria Nowack  
 Frank & Alexandra O'Connor  
 Old Friends Dinner Group  
 Britton & Arani Osler  
 Judy Oston  
 J.E. Panneton Family Foundation  
 Donna Parshalle  
 David & Molly Pelton  
 Penny Penticost  
 Wendy & Steven Pezim  
 Henry Pokorski  
 Anna Porter  
 Chris Ramsay  
 Louise Rayner  
 Dietmar & Susan Reiner  
 John Rhind  
 Savannah Richardson  
 Murray Rideout  
 Harvey Robbins  
 Nick Roberts  
 Trevor & Raechel Robertson  
 Andrew Rogers & Diane Dempsey  
 Mr. & Mrs. Brian Rohde  
 Joel & Linda Rose  
 David Rosen  
 Mary Ruby & Wood Hill  
 Joanna Ruby-Armstrong & Charles Armstrong  
 Cindy Rusak

Sewell Russell  
 Cindy Scanlon  
 Jeff Scanlon  
 Howison Schroeder  
 P. Scothorn & L. Chow  
 David R. Scott  
 Ian D. Scott  
 Alan & Judy Shiels  
 The Staff - Simcoe Muskoka Family Connections  
 Larry & Shirley Simons  
 Robert Simpson  
 Gordon W. Smith  
 Peter & Linda Smith  
 Patricia Snedden  
 St. John's United Senior Church Choir  
 Edmund Staunton  
 Suzanne Stohn  
 Stoncius Family  
 Frank & Liz Stoner IV  
 Eugene & Diana Stromberg  
 Mark Suckling  
 Brett Sura  
 John W. Suter  
 Eric Tao & Anthony He  
 Nicholas Taylor  
 Julie Thompson  
 Cleve & Linda Thurber  
 Amy Tinsley  
 Chris Toth  
 Keith Townley  
 Dr. George Trusler  
 Michael Tucker  
 The Uy Family  
 Ed Van Hooydonk  
 Julia & Casey Vandenoever  
 Andrew & Jan Vanderwal  
 Johanne Villeneuve  
 Janny Vincent  
 Catherine Virgo  
 Anne & William Wadsworth  
 Roland Walker  
 Karen Walsh  
 Paul & Diane Walters  
 Robert & Marion Wansbrough  
 John & Arlene Weekes  
 Weeks, Weeks & Caldwell Families  
 Don Weiss  
 West Parry Sound Snow Sport Association  
 Michael Whittle  
 Alice Williams  
 Ken & Gail Williams  
 Margaret Williams  
 Deborah Willis  
 Jennifer Willis  
 Janet Wilson  
 John Wilson & Judy Maynard  
 Nora Wilson  
 Susan Wilson  
 Laura Wingfelder  
 Alice Winn  
 Ron Wolch  
 Monica Wolnik  
 Anna Woodson  
 David & Lynn Woodward  
 Elinor Woodward  
 John & Judy Woodward  
 Sarah Youngkin  
 Anonymous (20)

## TRIBUTE GIFTS

### In Memory

Ron Andrews  
 E.J. Betsy Hegnauer Angelakos  
 Ed Bartram  
 Claude Belcourt  
 John Birnbaum  
 George & Wynn Charles  
 Esmonde L. Clarke  
 John W. Duncanson  
 Pat Dunnill  
 Robert Eakin  
 Bryan Graham  
 Betty Joy & Hugh B. Hall  
 John Alexander Hansuld  
 George C. Heintzman  
 Marion & Bill Holton  
 Judy Deeks Hurlburt  
 Heather Jarvis  
 John Paul "JP" Jeffrey  
 Mary Christine Karn  
 David Keenleyside  
 Steve Konoval  
 Dorothy Leonard  
 Garfield MacInnis  
 Dr. Gordon K. Martin  
 Jennifer Martin  
 John G. Matthew  
 David McCamus  
 Peter & Mary McCullough  
 Dr. Mark McDermott  
 John McGuirk  
 Mike Mulholland  
 Gerald W. & Gail H. Murphy  
 Douglas Ross Norris  
 Anthony John Ormsby  
 Robert Pinkney  
 David L. Rea  
 Karl Schiefer  
 John Shipman  
 B.N. & Audrey Simpson  
 Lynda Summerville  
 Mary Jane & Melville Tushingham  
 Jinny Weekes  
 Charles Wilde

### In Honour

Doug Alexander  
 Clair Balfour  
 Alice Barton  
 John & Jenn Bate  
 Fred Beck  
 Kerry & Brenda Benson  
 Barry Breeze  
 Don & Maureen Buchanan  
 Keith Carruthers  
 Vicki Carruthers  
 Dafel Family  
 Geordie, Louisa, Marigold & George Dalglish & Swith Bell  
 Hon. William G. Davis  
 Paul Deckert  
 Wedding guests of Amanda Fracz & Dallas Taylor  
 Gary French  
 Doug Ironside  
 Kent C. Jewett  
 Wally & Marilyn King  
 Donna Kovacs  
 Maja Lees  
 Bill Loughheed



Bubba Lougheed  
 Joey Lougheed  
 Doug & Brenda Malvern  
 Stoney McCart  
 Catherine Milne  
 LaRea Moody  
 Maggie Pepper  
 Susan & Tony Pigott  
 Sue & Peter Russell  
 Mary Sarjeant  
 Colin Shepherd  
 Tim Shepherd  
 Paul Swick  
 Michael Tafts  
 Michael Ugarenko  
 Rick & Gillian Uy  
 Janny Vincent  
 Susan Witton  
 Gillian & John Woodrooffe  
 Everitt & Lillian Youngkin

## LEGACY GIFTS

*Including a gift to the Georgian Bay Land Trust in your will or estate plans is a special way to leave a legacy to wilderness. Thank you to those who have planned a future gift:*

### Wally King Legacy Circle

Dr. Ralph S. & Caroline Grose  
 Dr. David R. & Susan Herbold  
 Wally & Marilyn King  
 Donald & Lorraine Lawson  
 Peter S. Watson  
 Anonymous

## Legacy Stewardship Gifts

John & Margaret Catto  
 Peter & Cathy Cooper  
 Susan Forrester & Frederick Dalley  
 Ann & David Doritty  
 Jon & Shelagh Grant  
 Dr. Ralph S. & Caroline Grose  
 Donald & Lorraine Lawson  
 Peter S. Watson

*If you would like to leave your legacy for the Bay we all love, please contact Janet at 416.440.1519 x 104 or janet.brough@gblt.org.*

## SPONSORS

Desmasdons Boatworks  
 Georgian Bay Spirit Co.  
 Payne Marine Ltd.  
 Tatham Engineering

## BAYSCAPES ART AUCTION

### Sponsors:

Artscape  
 Georgian Bay Landing  
 Ian MacDonald Architect Inc.  
 Kernaghan & Partners Ltd.  
 Martin Merry & Reid Ltd.  
 Payne Marine Ltd.  
 RE/MAX Baywatch Ltd.  
 Spiess McGlade Asset Management  
 Topper Linen  
 Vincent Associates

## Food & Beverage Partners:

Georgian Bay Spirit Co.  
 Glencairn Wines  
 Nadine Hughes Catering  
 Norse Brewery

## Entertainment:

DJaMMS (Dave Johnson, Jeff Adams, Matt Burns, Merritt Crews, Steph Adams)

## Silent Auction Artists & Contributors:

A&A Services & Marine Contracting  
 Peter Adams  
 Judy Badowski  
 Elizabeth Berry  
 Gill Cameron  
 Vicki Carruthers  
 Chocolat de Kat  
 Don Corbett  
 Jake Fowell  
 Bill Franks  
 The Georgian Peaks Ski Club  
 Naomi Goldie  
 Ralph Grose  
 Lisa Hannaford  
 Catherine Harrison  
 David Hodgetts  
 Joan Honsberger  
 Jonathan Houghton  
 Jaxx & Marbles  
 Kaz Jones  
 Kate Ward Designs  
 Jen Kernaghan

Jim Lorrigan  
 Dylan Lougheed  
 Mike Loveys  
 Kara McIntosh  
 Alexandra McLaughlin  
 John McMullen  
 Sue Miller  
 Patricia Peacock-Evans  
 Andrew Peycha  
 Return of the Native  
 Martha Lailey Roberts  
 Lisa Robertson  
 Rusho Designs  
 George Rutherford  
 Kyle Scheurmann  
 Elena Stebaeva  
 Glen Synowicki  
 Tim Topornicki  
 Topper Linen  
 Terry Ukrainec  
 Jessica Vergeer  
 Bryan Wall  
 Karen Walsh  
 Cindy Tripp & Anthony Boright  
 White Squall  
 Wendy Wingfelder

*In preparing this report, we have tried our best to be as accurate as possible. If there is an omission or a spelling error, please accept our sincerest apologies and contact us at 416.440.1519 x102 or info@gblt.org so that we can update our records.*

# OUR TEAM

## DIRECTORS

**David Doritty**  
 Board Chair

**Jan Ruby**  
 Past Chair

**Peter Koetsier**  
 Treasurer

**Shannon Beddoe**  
 Secretary

## ADVISORS

Andy Alexander  
 Christopher Baines  
 James Beatty  
 Sandy Boyd  
 Graeme Burt  
 John Catto  
 Nancy Christie  
 Peter Cooper  
 Fred Dalley  
 Neil Davis  
 Michael Drinkwater  
 Jon Grant

**David Browne**  
 Investment Chair

**David Bunston**  
 Land Protection Chair

**Jim Cooper**

**Ian Davis**  
 Stewardship Chair

Stephen Griggs  
 John Hackett  
 Adam Howard  
 Jennifer Ivey Bannock  
 Graham King  
 Wally King  
 Donald Lawson  
 Diane MacDiarmid  
 Ian MacLeod  
 Sandy McCoy  
 Sandy McLaren  
 Paul McLean

**Nick Eyles**

**Andy Fabens**

**Jennifer Kernaghan**  
 Communications Chair

**Nick Steffey**

**Cindy Tripp**  
 Fundraising Chair

Evelyn Newell  
 Michael Owen  
 Dana Porter  
 Carolyn Rymell  
 Georgia Rennick  
 Tom Scoon  
 Carl Spiess  
 Richard Stark  
 John Stark  
 Janny Vincent  
 Barbara Zimmerman

## STAFF

**Bill Lougheed**  
 Executive Director

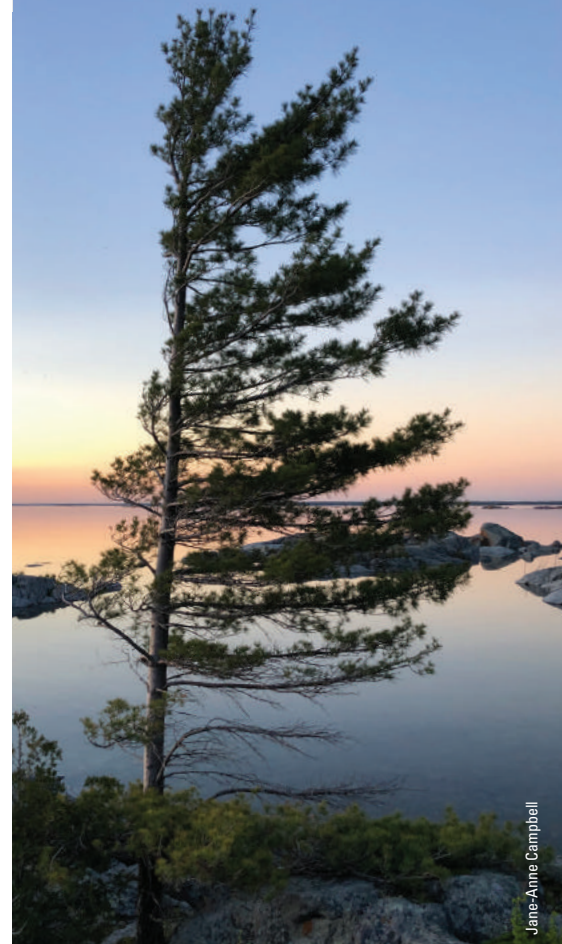
**Brooks Greer**  
 Land Protection Program Manager

**Janet Brough**  
 Senior Development Officer

**Sarah Koetsier**  
 Communications Director  
 & Office Administrator

**Irina Denissova**  
 Bookkeeper





### OUR MISSION

The Georgian Bay Land Trust acts to protect wilderness lands and species along the eastern shore of Georgian Bay and the North Channel and its near watershed, through strategic conservation planning, land securement, stewardship, research, and education.

### OUR VISION

An eastern Georgian Bay and North Channel whose islands, shores, and inland watersheds are connected and strengthened by a network of protected natural lands and habitats, where native species thrive and people interact with the natural world.

### OUR VALUES

Love and respect for our special place; Integrity and commitment to our work; Inspiring others to preserve this natural wonder.

Georgian Bay Trust Foundation, Inc. operating as Georgian Bay Land Trust  
120 Eglinton Avenue East, Suite 1000 | Toronto, ON | M4P 1E2  
416.440.1519 | [www.gbtl.org](http://www.gbtl.org)

