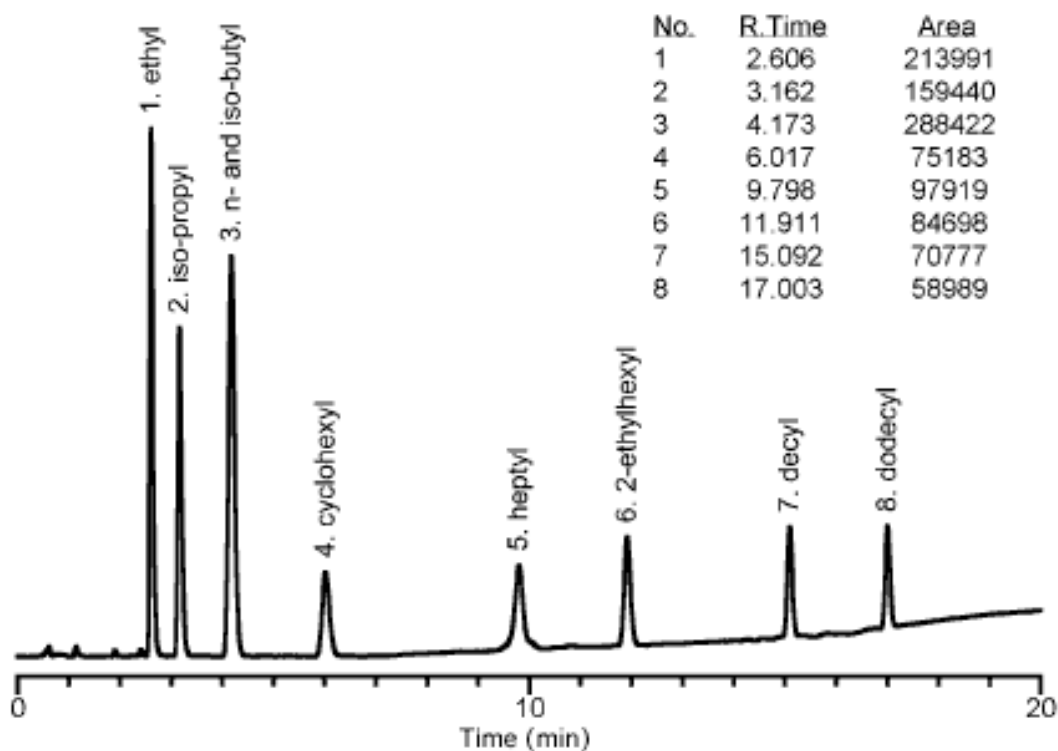


## Analysis of Phthalic acid dialkylester

Data No. LA331-0000



Column : Inertsil C8-3  
( 5 $\mu$ m , 150  $\times$  4.6 mmI.D.)

Column Cat. No. : 5020-01900

Flow Rate : 1.0mL/min

Col. Temp. : 40°C

Eluent : A:H<sub>2</sub>O

B :CH<sub>3</sub>CN

A/B=25/75 -(5min)- 25/75 -(10min)- 0/100,v/v

Sample : Phthalic acid dialkyl esters

Solutes

: 1. Diethyl phthalate(1  $\mu$ L/mL)

2. Di-iso-propyl Phthalate( 1 $\mu$ L/mL)

3. Di-n-butyl Phthalate(1  $\mu$ L/mL)

4. Di-iso-butyl Phthalate(1  $\mu$ L/mL)

5. Dicyclohexyl Phthalate(0.5 mg/mL)

6. Di-n-heptyl Phthalate(1  $\mu$ L/mL)

7. Di-(2-ethylhexyl) Phthalate(1  $\mu$ L/mL)

8. Di-n-decyl Phthalate(1  $\mu$ L/mL)

9. Di-n-dodecyl Phthalate(1  $\mu$ L/mL)