

# 2027 CALENDAR CATALOG



Effective January 1, 2026

[www.junocalendar.com](http://www.junocalendar.com)

# CONTENTS

## 100 | Executive Line

101	World Travel .....	3	108	Tropical Island .....	11
102	American Landscapes .....	5	112	Blooming Flowers .....	13
103	Puppy Pals .....	7			
104	Golf Courses .....	9			

## 200 | Value Line

201	Views of the World .....	15	205	Floral Scents .....	19
202	American Destination .....	17			

## 300 | Appointment Line (★ Latino Edition)

301	Seasons of the World .....	21	★ 319	Catolico .....	31
302	American Splendor .....	22	★ 321	Beaches in Mexico .....	32
303	Puppy Parade .....	23	322	Delicious .....	33
305	Flowers .....	24	323	Exotic Cars .....	34
307	Tropical Beach .....	25	324	Romantic Secret .....	35
308	Destination California .....	26	330	Harvest .....	36
★ 309	Latin America .....	27	★ 334	El Salvador .....	37
312	Gardens .....	28	336	Breads & Cakes .....	38
★ 317	Scenes of Mexico .....	29	339	Horses .....	39
★ 318	Holy .....	30	★ 340	Culture of Mexico .....	40

# 2027 CALENDAR

## 500 | Triple-View Line

501	World Adventure .....	41	504	Great America .....	47
502	Tropical Dreams .....	43			
503	Gardens .....	45			

## 700 | Desktop Line

701	Around the World .....	50	709	Tropical Island .....	54
702	Golf Courses .....	51	710	Puppies .....	55
704	Gardens .....	52	712	Beautiful America .....	56
706	Sports Cars .....	53			

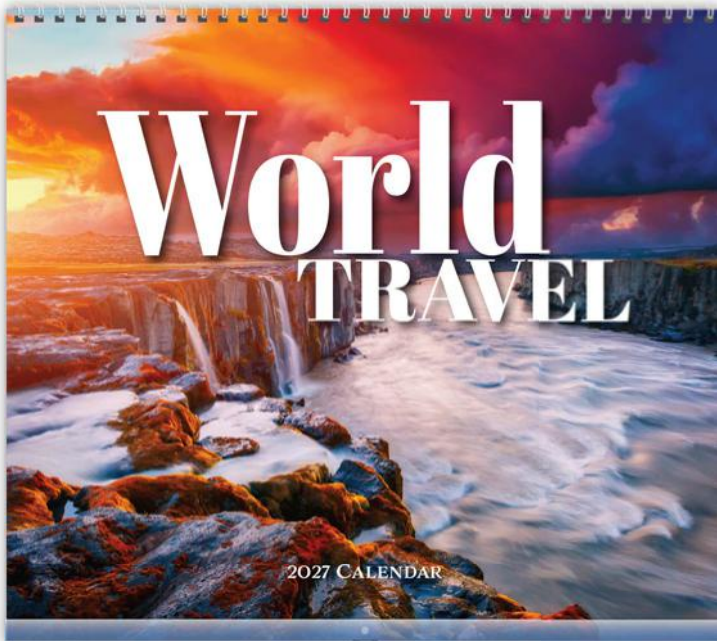
## 750 | Desktop Line

751	Around the World .....	58	757	Flowers .....	61
752	Beautiful America .....	59			
754	Puppies .....	60			

## 900 | Large Desktop Line

901	Around the World .....	62	905	Puppies .....	65
902	Beautiful America .....	63			
903	Gardens .....	64			

	General Information .....	66			
--	---------------------------	----	--	--	--



**SPECIFICATIONS**

- Size (Opened):** 13 1/2" x 24"
- Size (Closed):** 13 1/2" x 12"
- Quantity of Sheets:** 13 sheets total
- Binding Type:** Wire-O Bound
- Imprint Area:** 12" x 2"
- Imprint Color:** Black
- Minimum Order Qty:** 200 qty.
- Change of Copy:** \$30.00 (G) each
- Standard One Color Imprint Set-Up Charge:** \$45.00 (G)
- Each Add'l Color:** \$45.00 (G) set-up + \$0.35 (G) each run
- Shipping Weight (Bulk):** 35 lbs. (50 qty / box)
- Plain Envelopes (Bulk):** \$0.75 (G) each
- Clear Plastic Hanger:** \$0.75 (G) each

Your Imprint Here

SUNDAY	MONDAY	TUESDAY	WEDNESDAY	THURSDAY	FRIDAY	SATURDAY
<small>DECEMBER 2026</small> S M T W T F S 1 2 3 4 5 6 7 8 9 10 11 12 13 14 15 16 17 18 19 20 21 22 23 24 25 26 27 28 29 30 31	<small>FEBRUARY 2027</small> S M T W T F S 1 2 3 4 5 6 7 8 9 10 11 12 13 14 15 16 17 18 19 20 21 22 23 24 25 26 27 28				1	2
3	4	5	6	7	8	9
10	11	12	13	14	15	16
17	18	19	20	21	22	23
24	25	26	27	28	29	30
31						
<b>JANUARY 2027</b>						

\*Sample images are displayed with a clear plastic (acetate) adhesive hanger. (OPTIONAL)





**JAN** Charles Bridge, Prague



**FEB** Ghent, Flanders, Belgium



**MAR** Village of Oia, Santorini, Greece



**APR** Hwaseong Fortress, Suwon, South Korea



**MAY** Stari Most, Mostar, Bosnia and Herzegovina



**JUN** Dom Luís I Bridge, Porto, Portugal



**JUL** Fort Lovrijenac, Dubrovnik, Croatia



**AUG** Hallstatt, Austria



**SEP** Selfoss Waterfall, Vatnajökull NP, Iceland



**OCT** Phra Mahathat Chedi Si Wiang Chai, Thailand



**NOV** Sharjah Mosque, Emirate of Sharjah, United Arab Emirates



**DEC** Seiser Alm, Dolomites, Italy



**SPECIFICATIONS**

- Size (Opened):** 13 1/2" x 24"
- Size (Closed):** 13 1/2" x 12"
- Quantity of Sheets:** 13 sheets total
- Binding Type:** Wire-O Bound
- Imprint Area:** 12" x 2"
- Imprint Color:** Black
- Minimum Order Qty:** 200 qty.
- Change of Copy:** \$30.00 (G) each
- Standard One Color Imprint Set-Up Charge:** \$45.00 (G)
- Each Add'l Color:** \$45.00 (G) set-up + \$0.35 (G) each run
- Shipping Weight (Bulk):** 35 lbs. (50 qty / box)
- Plain Envelopes (Bulk):** \$0.75 (G) each
- Clear Plastic Hanger:** \$0.75 (G) each

**Your Imprint Here**

SUNDAY	MONDAY	TUESDAY	WEDNESDAY	THURSDAY	FRIDAY	SATURDAY
<small>DECEMBER 2026</small> S M T W T F S 1 2 3 4 5 6 7 8 9 10 11 12 13 14 15 16 17 18 19 20 21 22 23 24 25 26 27 28 29 30 31	<small>FEBRUARY 2027</small> S M T W T F S 1 2 3 4 5 6 7 8 9 10 11 12 13 14 15 16 17 18 19 20 21 22 23 24 25 26 27 28				<b>1</b>	<b>2</b>
<b>3</b>	4	5	6	7	8	9
<b>10</b>	11	12	13	14	15	16
<b>17</b>	<b>18</b>	19	20	21	22	23
<b>24</b>	25	26	27	28	29	30
<b>31</b>						
<b>JANUARY 2027</b>						

\*Sample images are displayed with a clear plastic (acetate) adhesive hanger. (OPTIONAL)





**JAN** Lake Helene, Rocky Mountain NP, CO



**FEB** Bisti Badlands, NM



**MAR** St. Charles Avenue, New Orleans, LA



**APR** Nashville, TN



**MAY** Sylvan Lake, Custer State Park, SD



**JUN** Saguaro NP, Sonoran Desert, Tucson, AZ



**JUL** Statue of Liberty, Liberty Island, New York, NY



**AUG** South Pointe Park, Miami Beach, FL



**SEP** John A. Roebling Suspension Bridge, Cincinnati, OH



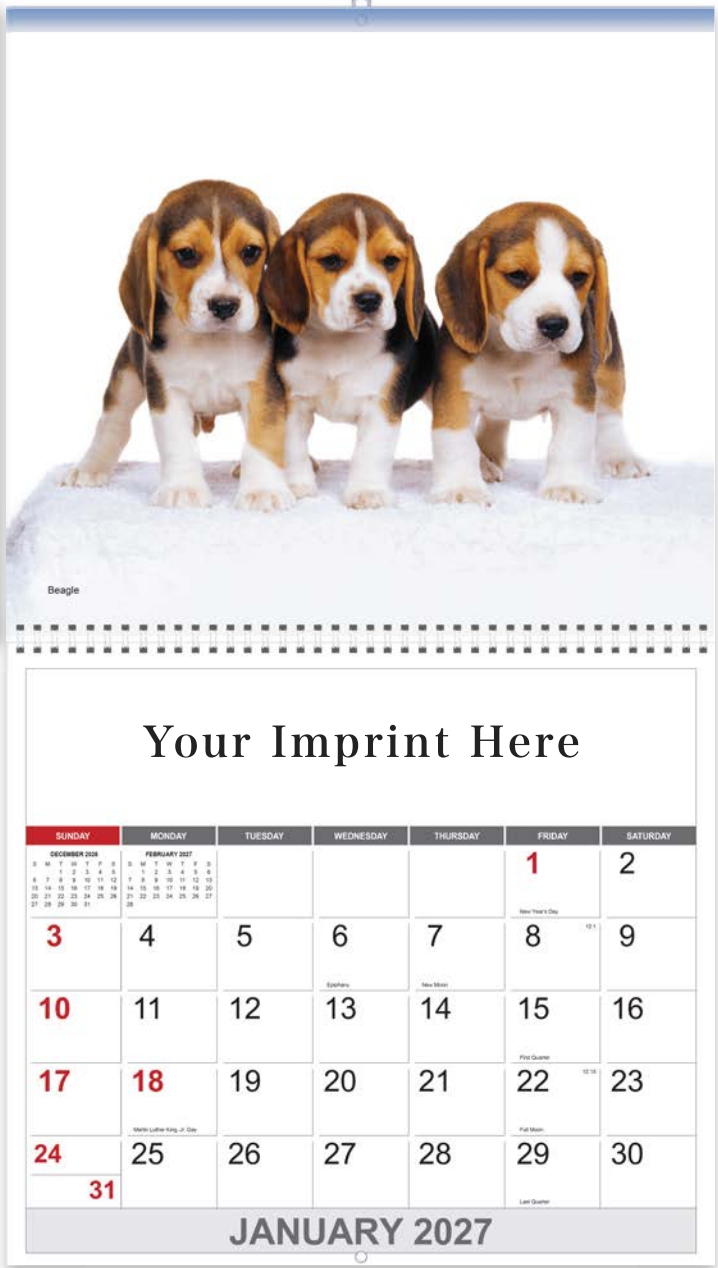
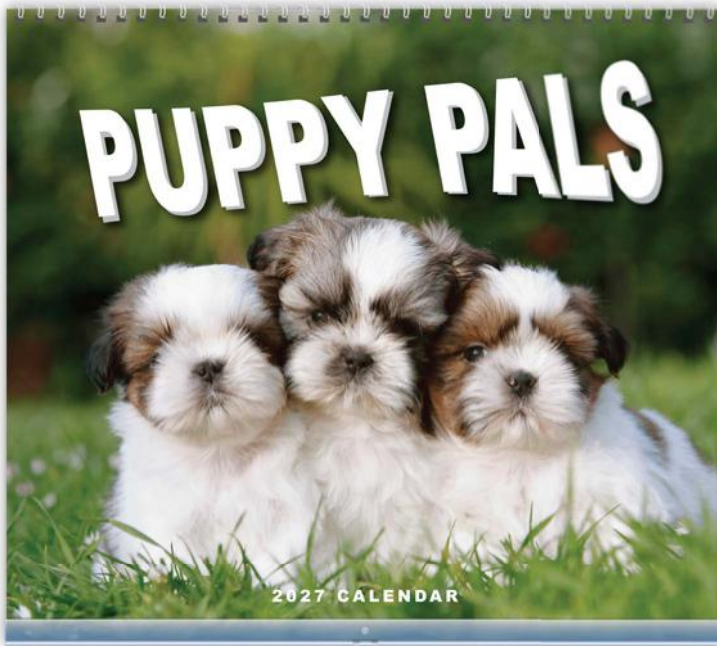
**OCT** Piedmont Park, Atlanta, GA



**NOV** St. Paul, MN



**DEC** Bodie Island Lighthouse, NC



**SPECIFICATIONS**

- Size (Opened):** 13 1/2" x 24"
- Size (Closed):** 13 1/2" x 12"
- Quantity of Sheets:** 13 sheets total
- Binding Type:** Wire-O Bound
- Imprint Area:** 12" x 2"
- Imprint Color:** Black
- Minimum Order Qty:** 200 qty.
- Change of Copy:** \$30.00 (G) each
- Standard One Color Imprint Set-Up Charge:** \$45.00 (G)
- Each Add'l Color:** \$45.00 (G) set-up + \$0.35 (G) each run
- Shipping Weight (Bulk):** 35 lbs. (50 qty / box)
- Plain Envelopes (Bulk):** \$0.75 (G) each
- Clear Plastic Hanger:** \$0.75 (G) each

\*Sample images are displayed with a clear plastic (acetate) adhesive hanger. (OPTIONAL)





JAN Beagle



FEB Toy Poodle



MAR Cavalier King Charles Spaniel



APR Bloodhound



MAY French Bulldog



JUN Chihuahua



JUL Samoyed



AUG Shih Tzu



SEP Border Collie



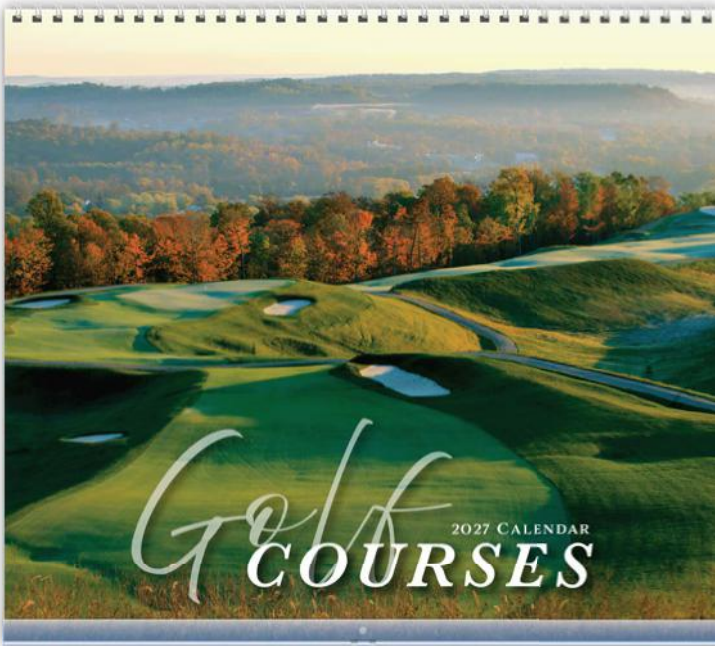
OCT Boston Terrier



NOV Golden Retriever



DEC Jack Russell Terrier



**SPECIFICATIONS**

- Size (Opened):** 13 1/2" x 24"
- Size (Closed):** 13 1/2" x 12"
- Quantity of Sheets:** 13 sheets total
- Binding Type:** Wire-O Bound
- Imprint Area:** 12" x 2"
- Imprint Color:** Black
- Minimum Order Qty:** 200 qty.
- Change of Copy:** \$30.00 (G) each
- Standard One Color Imprint Set-Up Charge:** \$45.00 (G)
- Each Add'l Color:** \$45.00 (G) set-up + \$0.35 (G) each run
- Shipping Weight (Bulk):** 35 lbs. (50 qty / box)
- Plain Envelopes (Bulk):** \$0.75 (G) each
- Clear Plastic Hanger:** \$0.75 (G) each

**Your Imprint Here**

SUNDAY	MONDAY	TUESDAY	WEDNESDAY	THURSDAY	FRIDAY	SATURDAY
<small>DECEMBER 2016</small> S M T W T F S 1 2 3 4 5 6 7 8 9 10 11 12 13 14 15 16 17 18 19 20 21 22 23 24 25 26 27 28 29 30 31	<small>FEBRUARY 2017</small> S M T W T F S 1 2 3 4 5 6 7 8 9 10 11 12 13 14 15 16 17 18 19 20 21 22 23 24 25 26 27 28				1	2
3	4	5	6	7	8	9
10	11	12	13	14	15	16
17	18	19	20	21	22	23
24	25	26	27	28	29	30
31						
<b>JANUARY 2017</b>						

\*Sample images are displayed with a clear plastic (acetate) adhesive hanger. (OPTIONAL)





**JAN** Eagle Eye Golf and Banquet Center, Eagle Eye Golf Club, Hole 18, Bath Township, MI



**FEB** Indian River Club, Hole 16, Vero Beach, FL



**MAR** Country Club of Landfall, Hole 18, Wilmington, NC



**APR** Gulf Stream Golf Course, Hole 18, Delray Beach, FL



**MAY** Pristine Bay Resort, The Black Pearl Golf Course, Hole 11, Roatan, Honduras



**JUN** Trump International Golf Club West Palm Beach, Hole 1, West Palm Beach, FL



**JUL** Fisher Island Club, The Links at Fisher Island, Hole 6 & 7, Fisher Island, FL



**AUG** Country Club of Landfall, Hole 17, Wilmington, NC



**SEP** Cherry Hills Country Club, Hole 17, Cherry Hills Village, CO



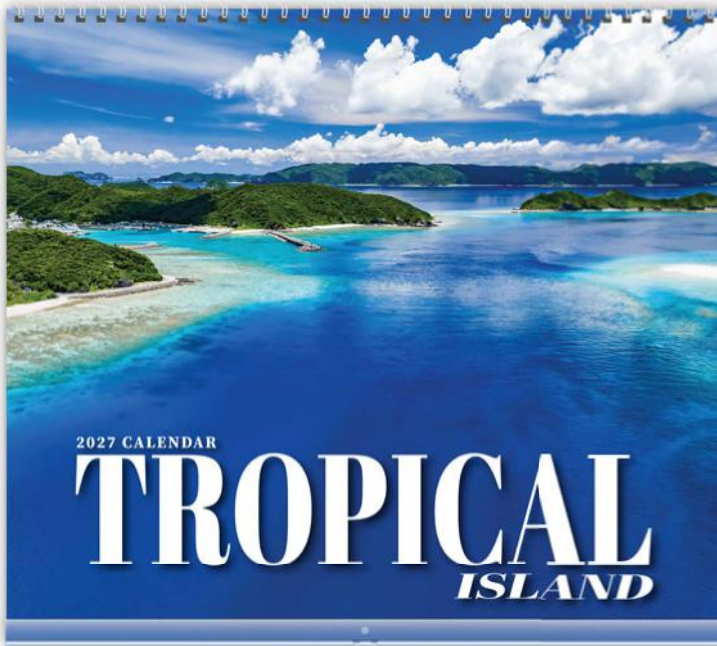
**OCT** French Lick Resort, Pete Dye Course, Hole 11 & 12, French Lick, IN



**NOV** French Lick Resort, Pete Dye Course, Hole 14 Behind, French Lick, IN



**DEC** Cape Arundel Golf Course, Hole 6, Kennebunkport, ME



**SPECIFICATIONS**

- Size (Opened):** 13 1/2" x 24"
- Size (Closed):** 13 1/2" x 12"
- Quantity of Sheets:** 13 sheets total
- Binding Type:** Wire-O Bound
- Imprint Area:** 12" x 2"
- Imprint Color:** Black
- Minimum Order Qty:** 200 qty.
- Change of Copy:** \$30.00 (G) each
- Standard One Color Imprint Set-Up Charge:** \$45.00 (G)
- Each Add'l Color:** \$45.00 (G) set-up + \$0.35 (G) each run
- Shipping Weight (Bulk):** 35 lbs. (50 qty / box)
- Plain Envelopes (Bulk):** \$0.75 (G) each
- Clear Plastic Hanger:** \$0.75 (G) each

Your Imprint Here

SUNDAY	MONDAY	TUESDAY	WEDNESDAY	THURSDAY	FRIDAY	SATURDAY
<small>DECEMBER 2016</small> S M T W T F S 1 2 3 4 5 6 7 8 9 10 11 12 13 14 15 16 17 18 19 20 21 22 23 24 25 26 27 28 29 30 31	<small>FEBRUARY 2017</small> S M T W T F S 1 2 3 4 5 6 7 8 9 10 11 12 13 14 15 16 17 18 19 20 21 22 23 24 25 26 27 28				1	2
3	4	5	6	7	8	9
10	11	12	13	14	15	16
17	18	19	20	21	22	23
24	25	26	27	28	29	30
31						
<b>JANUARY 2017</b>						

\*Sample images are displayed with a clear plastic (acetate) adhesive hanger. (OPTIONAL)





**JAN** Playa Dorada, Puerto Plata, Dominican Republic



**FEB** Fteri Beach, Kefalonia, Greece



**MAR** Shimizu Island, Palawan, Philippines



**APR** Railay Beach, Krabi, Thailand



**MAY** Egg Stone Beach, Vietnam



**JUN** Thulhagiri Island Resort, North Malé Atoll, Maldives



**JUL** Tropic of Cancer Beach, Bahamas



**AUG** Anse Lazio Beach, Praslin Island, Seychelles



**SEP** Kerama Islands, Japan



**OCT** Wakatobi National Park, Indonesia



**NOV** Scopello Beach, Sicily, Italy

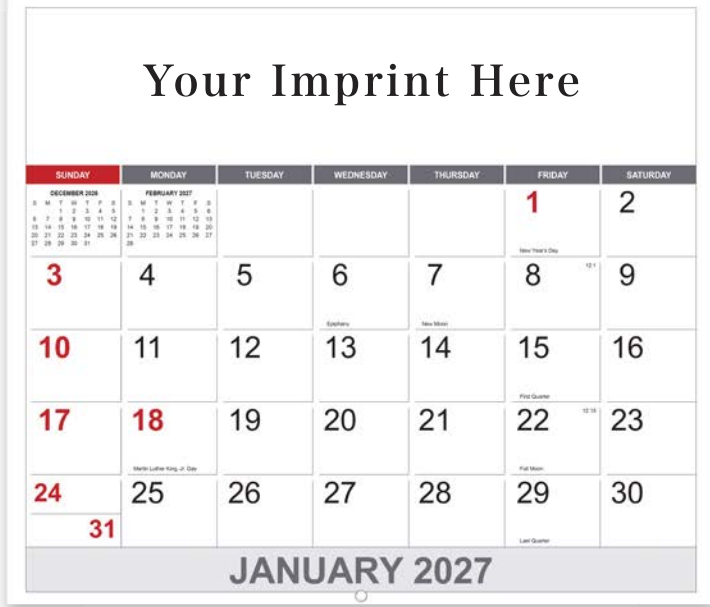


**DEC** Mauritius Island



**SPECIFICATIONS**

- Size (Opened):** 13 1/2" x 24"
- Size (Closed):** 13 1/2" x 12"
- Quantity of Sheets:** 13 sheets total
- Binding Type:** Wire-O Bound
- Imprint Area:** 12" x 2"
- Imprint Color:** Black
- Minimum Order Qty:** 200 qty.
- Change of Copy:** \$30.00 (G) each
- Standard One Color Imprint Set-Up Charge:** \$45.00 (G)
- Each Add'l Color:** \$45.00 (G) set-up + \$0.35 (G) each run
- Shipping Weight (Bulk):** 35 lbs. (50 qty / box)
- Plain Envelopes (Bulk):** \$0.75 (G) each
- Clear Plastic Hanger:** \$0.75 (G) each



\*Sample images are displayed with a clear plastic (acetate) adhesive hanger. (OPTIONAL)





JAN Calendula



FEB Japanese Camellia



MAR Hyacinth



APR Daffodil



MAY Peony



JUN English Rose



JUL Dahlia



AUG Sunflower



SEP Chrysanthemum



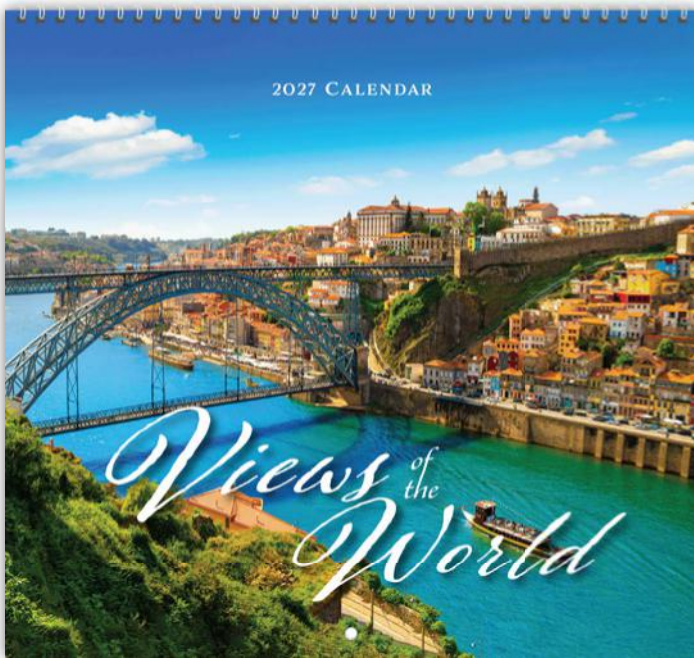
OCT Viola



NOV Daisy



DEC Amaryllis



**SPECIFICATIONS**

- Size (Opened):** 12" x 22"
- Size (Closed):** 12" x 11"
- Quantity of Sheets:** 13 sheets total
- Binding Type:** Wire-O Bound
- Imprint Area:** 10" x 1 3/4"
- Imprint Color:** Black
- Minimum Order Qty:** 200 qty.
- Change of Copy:** \$30.00 (G) each
- Standard One Color Imprint Set-Up Charge:** \$45.00 (G)
- Each Add'l Color:** \$45.00 (G) set-up + \$0.35 (G) each run
- Shipping Weight (Bulk):** 26 lbs. (50 qty / box)
- Plain Envelopes (Bulk):** \$0.65 (G) each

Your Imprint Here

SUNDAY	MONDAY	TUESDAY	WEDNESDAY	THURSDAY	FRIDAY	SATURDAY
DECEMBER 2026 12 13 14 15 16 17 18 19 20 21 22 23 24 25 26 27 28 29 30 31	FEBRUARY 2027 1 2 3 4 5 6 7 8 9 10 11 12 13 14 15 16 17 18 19 20 21 22 23 24 25 26 27 28				1	2
3	4	5	Euphonia	New Moon	8	9
10	11	12	13	14	15	16
17	18	19	20	21	22	23
24	Martin Luther King, Jr. Day	26	27	28	29	30
31						
JANUARY 2027						





**JAN** Charles Bridge, Prague



**FEB** Ghent, Flanders, Belgium



**MAR** Village of Oia, Santorini, Greece



**APR** Hwaseong Fortress, Suwon, South Korea



**MAY** Stari Most, Mostar, Bosnia and Herzegovina



**JUN** Dom Luís I Bridge, Porto, Portugal



**JUL** Fort Lovrijenac, Dubrovnik, Croatia



**AUG** Hallstatt, Austria



**SEP** Selfoss Waterfall, Vatnajökull NP, Iceland



**OCT** Phra Mahathat Chedi Si Wiang Chai, Thailand



**NOV** Sharjah Mosque, Emirate of Sharjah, United Arab Emirates



**DEC** Seiser Alm, Dolomites, Italy



**SPECIFICATIONS**

- Size (Opened):** 12" x 22"
- Size (Closed):** 12" x 11"
- Quantity of Sheets:** 13 sheets total
- Binding Type:** Wire-O Bound
- Imprint Area:** 10" x 1 3/4"
- Imprint Color:** Black
- Minimum Order Qty:** 200 qty.
- Change of Copy:** \$30.00 (G) each
- Standard One Color Imprint Set-Up Charge:** \$45.00 (G)
- Each Add'l Color:** \$45.00 (G) set-up + \$0.35 (G) each run
- Shipping Weight (Bulk):** 26 lbs. (50 qty / box)
- Plain Envelopes (Bulk):** \$0.65 (G) each

Your Imprint Here

SUNDAY	MONDAY	TUESDAY	WEDNESDAY	THURSDAY	FRIDAY	SATURDAY
DECEMBER 2026 S M T W T F S 1 2 3 4 5 6 7 8 9 10 11 12 13 14 15 16 17 18 19 20 21 22 23 24 25 26 27 28 29 30 31	FEBRUARY 2027 S M T W T F S 1 2 3 4 5 6 7 8 9 10 11 12 13 14 15 16 17 18 19 20 21 22 23 24 25 26 27 28 29 30				1	2
3	4	5	Ephraim	7	New Year's Day <small>12/31</small>	9
10	11	12	Epiphany	14	New Moon	16
17	18	19	20	21	First Quarter <small>12/18</small>	23
24	Martin Luther King, Jr. Day <small>1/15</small>	26	27	28	Full Moon	30
31						
JANUARY 2027						





**JAN** Lake Helene, Rocky Mountain NP, CO



**FEB** Bisti Badlands, NM



**MAR** St. Charles Avenue, New Orleans, LA



**APR** Nashville, TN



**MAY** Sylvan Lake, Custer State Park, SD



**JUN** Saguaro NP, Sonoran Desert, Tucson, AZ



**JUL** Statue of Liberty, Liberty Island, New York, NY



**AUG** South Pointe Park, Miami Beach, FL



**SEP** John A. Roebling Suspension Bridge, Cincinnati, OH



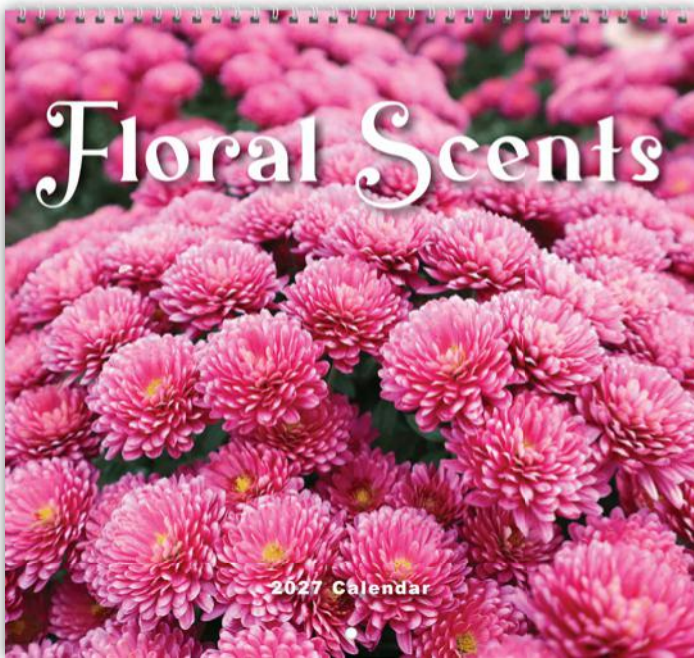
**OCT** Piedmont Park, Atlanta, GA



**NOV** St. Paul, MN



**DEC** Bodie Island Lighthouse, NC



**SPECIFICATIONS**

- Size (Opened):** 12" x 22"
- Size (Closed):** 12" x 11"
- Quantity of Sheets:** 13 sheets total
- Binding Type:** Wire-O Bound
- Imprint Area:** 10" x 1 3/4"
- Imprint Color:** Black
- Minimum Order Qty:** 200 qty.
- Change of Copy:** \$30.00 (G) each
- Standard One Color Imprint Set-Up Charge:** \$45.00 (G)
- Each Add'l Color:** \$45.00 (G) set-up + \$0.35 (G) each run
- Shipping Weight (Bulk):** 26 lbs. (50 qty / box)
- Plain Envelopes (Bulk):** \$0.65 (G) each

Your Imprint Here

SUNDAY	MONDAY	TUESDAY	WEDNESDAY	THURSDAY	FRIDAY	SATURDAY
<small>DECEMBER 2026</small> 1 2 3 4 5 6 7 8 9 10 11 12 13 14 15 16 17 18 19 20 21 22 23 24 25 26 27 28 29 30 31	<small>FEBRUARY 2027</small> 1 2 3 4 5 6 7 8 9 10 11 12 13 14 15 16 17 18 19 20 21 22 23 24 25 26 27 28				1	2
3	4	5	Euphonia	New Moon	8	9
10	11	12	13	14	15	16
17	18	19	20	21	22	23
24	Martin Luther King, Jr. Day	26	27	28	29	30
31						
JANUARY 2027						





**JAN** Calendula



**FEB** Japanese Camellia



**MAR** Hyacinth



**APR** Daffodil



**MAY** Peony



**JUN** English Rose



**JUL** Dahlia



**AUG** Sunflower



**SEP** Chrysanthemum



**OCT** Viola



**NOV** Daisy



**DEC** Amaryllis



**JAN** Charles Bridge, Prague



**FEB** Ghent, Flanders, Belgium



**MAR** Village of Oia, Santorini, Greece



**APR** Hwaseong Fortress, Suwon, South Korea



**MAY** Stari Most, Mostar, Bosnia & Herzegovina



**JUN** Dom Luís I Bridge, Porto, Portugal



**JUL** Fort Lovrijenac, Dubrovnik, Croatia



**AUG** Hallstatt, Austria



**SEP** Selfoss Waterfall, Vatnajökull NP, Iceland



**OCT** Phra Mahathat Chedi Si Wiang Chai, Thailand



**NOV** Sharjah Mosque, Emirate of Sharjah, United Arab Emirates



**DEC** Seiser Alm, Dolomites, Italy



**IMPRINT COLOR OPTIONS**

**STANDARD ONE COLOR IMPRINT**



BLACK REFLEX GREEN RED  
BLUE 347 185

COLORS OTHER THAN BLACK  
SUBJECT TO ADD'L CHARGE

**FULL COLOR IMPRINT**

2+ COLORS (STANDARD COLORS)  
NON-STANDARD COLORS



SET-UP: \$25 (G)

RUN: \$0.38 (G) EACH

AVAILABLE ONLY IN WIRE-O BOUND

**SPECIFICATIONS**

<b>Size (Opened):</b>	11" x 19"
<b>Size (Closed):</b>	11" x 10 1/2"
<b>Quantity of Sheets:</b>	14 sheets total
<b>Binding Type (Style A):</b>	Wire-O Bound
<b>Binding Type (Style B):</b>	Saddle Stitch / Stapled
<b>Imprint Area:</b>	9" x 1 1/2"
<b>Standard One Color Imprint Set-Up Charge:</b>	See page 66 for more details
<b>Shipping Weight (Bulk):</b>	26 lbs. (100 qty / box)
<b>Minimum Order Qty:</b>	200 qty
<b>Additional Order Qty:</b>	Every 100 unit / item
<b>Envelopes:</b>	\$0.50 (G) each



**IMPRINT COLOR OPTIONS**

**STANDARD ONE COLOR IMPRINT**



BLACK REFLEX BLUE GREEN RED  
185 347 185

COLORS OTHER THAN BLACK SUBJECT TO ADD'L CHARGE

**FULL COLOR IMPRINT**

2+ COLORS (STANDARD COLORS) NON-STANDARD COLORS

SET-UP: \$25 (G)

RUN: \$0.38 (G) EACH

AVAILABLE ONLY IN WIRE-O BOUND

**SPECIFICATIONS**

- Size (Opened):** 11" x 19"
- Size (Closed):** 11" x 10 1/2"
- Quantity of Sheets:** 14 sheets total
- Binding Type (Style A):** Wire-O Bound
- Binding Type (Style B):** Saddle Stitch / Stapled
- Imprint Area:** 9" x 1 1/2"
- Standard One Color Imprint Set-Up Charge:** See page 66 for more details
- Shipping Weight (Bulk):** 26 lbs. (100 qty / box)
- Minimum Order Qty:** 200 qty
- Additional Order Qty:** Every 100 unit / item
- Envelopes:** \$0.50 (G) each



**JAN** Lake Helene, Rocky Mountain NP, CO



**FEB** Bisti Badlands, NM



**MAR** St. Charles Avenue, New Orleans, LA



**APR** Nashville, TN



**MAY** Sylvan Lake, Custer State Park, SD



**JUN** Saguaro NP, Sonoran Desert, Tucson, AZ



**JUL** Statue of Liberty, Liberty Island, New York, NY



**AUG** South Pointe Park, Miami Beach, FL



**SEP** John A. Roebling Suspension Bridge, Cincinnati, OH



**OCT** Piedmont Park, Atlanta, GA



**NOV** St. Paul, MN



**DEC** Bodie Island Lighthouse, NC

**STYLE A (WIRE-O BOUND)**

*Puppy Parade*  
2027 Calendar

**Your Imprint Here**

JANUARY 2027

				1	2
5	6	7	8	9	
10	11	12	13	14	15
17	18	19	20	21	22
24	25	26	27	28	29
31					

**Your Imprint Here**

**STYLE B (STAPLED)**

*Puppy Parade*  
2027 Calendar

**Your Imprint Here**

JANUARY 2027

				1	2
5	6	7	8	9	
10	11	12	13	14	15
17	18	19	20	21	22
24	25	26	27	28	29
31					

**Your Imprint Here**



**JAN** Beagle



**FEB** Toy Poodle



**MAR** Cavalier King Charles Spaniel



**APR** Bloodhound



**MAY** French Bulldog



**JUN** Chihuahua



**JUL** Samoyed



**AUG** Shih Tzu



**SEP** Border Collie



**OCT** Boston Terrier



**NOV** Golden Retriever



**DEC** Jack Russell Terrier



**IMPRINT COLOR OPTIONS**

**STANDARD ONE COLOR IMPRINT**



BLACK REFLEX GREEN RED  
BLUE 347 185

COLORS OTHER THAN BLACK  
SUBJECT TO ADD'L CHARGE

**FULL COLOR IMPRINT**

2+ COLORS (STANDARD COLORS)  
NON-STANDARD COLORS



SET-UP: \$25 (G)  
RUN: \$0.38 (G) EACH  
**AVAILABLE ONLY IN WIRE-O BOUND**

**SPECIFICATIONS**

- Size (Opened):** 11" x 19"
- Size (Closed):** 11" x 10 1/2"
- Quantity of Sheets:** 14 sheets total
- Binding Type (Style A):** Wire-O Bound
- Binding Type (Style B):** Saddle Stitch / Stapled
- Imprint Area:** 9" x 1 1/2"
- Standard One Color Imprint Set-Up Charge:** See page 66 for more details
- Shipping Weight (Bulk):** 26 lbs. (100 qty / box)
- Minimum Order Qty:** 200 qty
- Additional Order Qty:** Every 100 unit / item
- Envelopes:** \$0.50 (G) each



**IMPRINT COLOR OPTIONS**

**STANDARD ONE COLOR IMPRINT**



BLACK REFLEX BLUE GREEN RED  
185 347 185

COLORS OTHER THAN BLACK SUBJECT TO ADD'L CHARGE

**FULL COLOR IMPRINT**

2+ COLORS (STANDARD COLORS) NON-STANDARD COLORS



SET-UP: \$25 (G)

RUN: \$0.38 (G) EACH

AVAILABLE ONLY IN WIRE-O BOUND



JAN Calendula



FEB Japanese Camellia



MAR Hyacinth



APR Daffodil



MAY Peony



JUN English Rose

**SPECIFICATIONS**

- Size (Opened):** 11" x 19"
- Size (Closed):** 11" x 10 1/2"
- Quantity of Sheets:** 14 sheets total
- Binding Type (Style A):** Wire-O Bound
- Binding Type (Style B):** Saddle Stitch / Stapled
- Imprint Area:** 9" x 1 1/2"
- Standard One Color Imprint Set-Up Charge:** See page 66 for more details
- Shipping Weight (Bulk):** 26 lbs. (100 qty / box)
- Minimum Order Qty:** 200 qty
- Additional Order Qty:** Every 100 unit / item
- Envelopes:** \$0.50 (G) each



JUL Dahlia



AUG Sunflower



SEP Chrysanthemum



OCT Viola



NOV Daisy



DEC Amaryllis

## STYLE A (WIRE-O BOUND)



## STYLE B (STAPLED)



**JAN** Playa Dorada, Puerto Plata, Dominican Republic



**FEB** Fteri Beach, Kefalonia, Greece



**MAR** Shimizu Island, Palawan, Philippines



**APR** Railay Beach, Krabi, Thailand



**MAY** Egg Stone Beach, Vietnam



**JUN** Thulhagiri Island Resort, North Malé Atoll, Maldives



**JUL** Tropic of Cancer Beach, Bahamas



**AUG** Anse Lazio Beach, Praslin Island, Seychelles



**SEP** Kerama Islands, Japan



**OCT** Wakatobi NP, Indonesia



**NOV** Scopello Beach, Sicily, Italy



**DEC** Mauritius Island



### IMPRINT COLOR OPTIONS

**STANDARD ONE COLOR IMPRINT**



COLORS OTHER THAN BLACK  
SUBJECT TO ADD'L CHARGE

**FULL COLOR IMPRINT**

2+ COLORS (STANDARD COLORS)  
NON-STANDARD COLORS



SET-UP: \$25 (G)

RUN: \$0.38 (G) EACH

AVAILABLE ONLY IN WIRE-O BOUND

### SPECIFICATIONS

<b>Size (Opened):</b>	11" x 19"
<b>Size (Closed):</b>	11" x 10 1/2"
<b>Quantity of Sheets:</b>	14 sheets total
<b>Binding Type (Style A):</b>	Wire-O Bound
<b>Binding Type (Style B):</b>	Saddle Stitch / Stapled
<b>Imprint Area:</b>	9" x 1 1/2"
<b>Standard One Color Imprint Set-Up Charge:</b>	See page 66 for more details
<b>Shipping Weight (Bulk):</b>	26 lbs. (100 qty / box)
<b>Minimum Order Qty:</b>	200 qty
<b>Additional Order Qty:</b>	Every 100 unit / item
<b>Envelopes:</b>	\$0.50 (G) each



**IMPRINT COLOR OPTIONS**

**STANDARD ONE COLOR IMPRINT**

BLACK REFLEX BLUE GREEN RED  
185 347 185

COLORS OTHER THAN BLACK SUBJECT TO ADD'L CHARGE

**FULL COLOR IMPRINT**

2+ COLORS (STANDARD COLORS) NON-STANDARD COLORS

SET-UP: \$25 (G)  
RUN: \$0.38 (G) EACH

AVAILABLE ONLY IN WIRE-O BOUND



**JAN** Convict Lake, Mono County



**FEB** Los Angeles



**MAR** Antelope Valley California Poppy Reserve



**APR** Torrey Pines State NR, La Jolla, San Diego



**MAY** Sacramento



**JUN** Yosemite NP

**SPECIFICATIONS**

- Size (Opened):** 11" x 19"
- Size (Closed):** 11" x 10 1/2"
- Quantity of Sheets:** 14 sheets total
- Binding Type (Style A):** Wire-O Bound
- Binding Type (Style B):** Saddle Stitch / Stapled
- Imprint Area:** 9" x 1 1/2"
- Standard One Color Imprint Set-Up Charge:** See page 66 for more details
- Shipping Weight (Bulk):** 26 lbs. (100 qty / box)
- Minimum Order Qty:** 200 qty
- Additional Order Qty:** Every 100 unit / item
- Envelopes:** \$0.50 (G) each



**JUL** Malibu



**AUG** Mesquite Flat Sand Dunes, Death Valley NP



**SEP** Santa Monica Beach/Pier



**OCT** Napa Valley



**NOV** The Bay Bridge, San Francisco



**DEC** Bixby Creek Bridge, Big Sur, Monterey County



**JAN** Torres del Paine NP, Chile



**FEB** Cathedral of León, León, Nicaragua



**MAR** Caracas, Venezuela



**APR** Malecón de Miraflores, Lima, Peru



**MAY** Tegucigalpa, Honduras



**JUN** Arco de Santa Catalina, Antigua, Guatemala



**JUL** Dominican Beach, Bayahibe, Dominican Republic



**AUG** Iguazu Falls, Brazil & Argentina



**SEP** La Paz, Bolivia



**OCT** Guatapé, Antioquia, Colombia



**NOV** Poás Volcano NP, Alajuela Province, Costa Rica



**DEC** Mount Fitz Roy, Los Glaciares NP, Patagonia, Argentina



### IMPRINT COLOR OPTIONS

**STANDARD ONE COLOR IMPRINT**



COLORS OTHER THAN BLACK SUBJECT TO ADD'L CHARGE

**FULL COLOR IMPRINT**

2+ COLORS (STANDARD COLORS) NON-STANDARD COLORS



SET-UP: \$25 (G)  
RUN: \$0.38 (G) EACH

AVAILABLE ONLY IN WIRE-O BOUND

### SPECIFICATIONS

<b>Size (Opened):</b>	11" x 19"
<b>Size (Closed):</b>	11" x 10 1/2"
<b>Quantity of Sheets:</b>	14 sheets total
<b>Binding Type (Style A):</b>	Wire-O Bound
<b>Binding Type (Style B):</b>	Saddle Stitch / Stapled
<b>Imprint Area:</b>	9" x 1 1/2"
<b>Standard One Color Imprint Set-Up Charge:</b>	See page 66 for more details
<b>Shipping Weight (Bulk):</b>	26 lbs. (100 qty / box)
<b>Minimum Order Qty:</b>	200 qty
<b>Additional Order Qty:</b>	Every 100 unit / item
<b>Envelopes:</b>	\$0.50 (G) each



**IMPRINT COLOR OPTIONS**

**STANDARD ONE COLOR IMPRINT**



BLACK REFLEX BLUE GREEN RED  
185 347 185

COLORS OTHER THAN BLACK SUBJECT TO ADD'L CHARGE

**FULL COLOR IMPRINT**

2+ COLORS (STANDARD COLORS) NON-STANDARD COLORS



SET-UP: \$25 (G)

RUN: \$0.38 (G) EACH

AVAILABLE ONLY IN WIRE-O BOUND



JAN



FEB



MAR



APR



MAY



JUN



JUL



AUG



SEP



OCT



NOV



DEC

**SPECIFICATIONS**

- Size (Opened):** 11" x 19"
- Size (Closed):** 11" x 10 1/2"
- Quantity of Sheets:** 14 sheets total
- Binding Type (Style A):** Wire-O Bound
- Binding Type (Style B):** Saddle Stitch / Stapled
- Imprint Area:** 9" x 1 1/2"
- Standard One Color Imprint Set-Up Charge:** See page 66 for more details
- Shipping Weight (Bulk):** 26 lbs. (100 qty / box)
- Minimum Order Qty:** 200 qty
- Additional Order Qty:** Every 100 unit / item
- Envelopes:** \$0.50 (G) each



**JAN** Teatro Degollado, Guadalajara, Jalisco



**FEB** La Quebrada, Acapulco, Guerrero



**MAR** Parroquia de San Miguel Arcángel, San Miguel de Allende, Guanajuato



**APR** Guadalajara Cathedral, Guadalajara, Jalisco



**MAY** Metropolitan Cathedral, Mexico City



**JUN** Hierve el Agua, Oaxaca



**JUL** Templo de San Marcos, Aguascalientes



**AUG** Tequila, Jalisco



**SEP** Polanco, Mexico City



**OCT** Veracruz



**NOV** World Trade Center, Mexico City



**DEC** Iglesia de Nuestra Señora de los Remedios / Popocatepetl Volcano, Cholula, Puebla



### IMPRINT COLOR OPTIONS

**STANDARD ONE COLOR IMPRINT**



BLACK REFLEX GREEN RED  
BLUE 347 185

COLORS OTHER THAN BLACK  
SUBJECT TO ADD'L CHARGE

**FULL COLOR IMPRINT**

2+ COLORS (STANDARD COLORS)  
NON-STANDARD COLORS



SET-UP: \$25 (G)  
RUN: \$0.38 (G) EACH

AVAILABLE ONLY IN WIRE-O BOUND

### SPECIFICATIONS

<b>Size (Opened):</b>	11" x 19"
<b>Size (Closed):</b>	11" x 10 1/2"
<b>Quantity of Sheets:</b>	14 sheets total
<b>Binding Type (Style A):</b>	Wire-O Bound
<b>Binding Type (Style B):</b>	Saddle Stitch / Stapled
<b>Imprint Area:</b>	9" x 1 1/2"
<b>Standard One Color Imprint Set-Up Charge:</b>	See page 66 for more details
<b>Shipping Weight (Bulk):</b>	26 lbs. (100 qty / box)
<b>Minimum Order Qty:</b>	200 qty
<b>Additional Order Qty:</b>	Every 100 unit / item
<b>Envelopes:</b>	\$0.50 (G) each



IMPRINT COLOR OPTIONS

**STANDARD ONE COLOR IMPRINT**

BLACK REFLEX BLUE GREEN RED  
185 347 185

COLORS OTHER THAN BLACK SUBJECT TO ADD'L CHARGE

**FULL COLOR IMPRINT**

2+ COLORS (STANDARD COLORS) NON-STANDARD COLORS

SET-UP: \$25 (G)  
RUN: \$0.38 (G) EACH

AVAILABLE ONLY IN WIRE-O BOUND



JAN



FEB



MAR



APR



MAY



JUN

SPECIFICATIONS

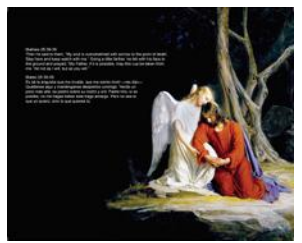
- Size (Opened):** 11" x 19"
- Size (Closed):** 11" x 10 1/2"
- Quantity of Sheets:** 14 sheets total
- Binding Type (Style A):** Wire-O Bound
- Binding Type (Style B):** Saddle Stitch / Stapled
- Imprint Area:** 9" x 1 1/2"
- Standard One Color Imprint Set-Up Charge:** See page 66 for more details
- Shipping Weight (Bulk):** 26 lbs. (100 qty / box)
- Minimum Order Qty:** 200 qty
- Additional Order Qty:** Every 100 unit / item
- Envelopes:** \$0.50 (G) each



JUL



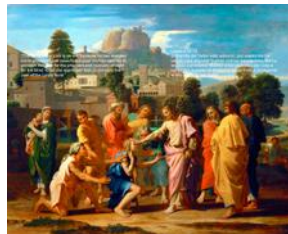
AUG



SEP



OCT



NOV



DEC

**STYLE A (WIRE-O BOUND)**

**LATINO EDITION**  
INCLUDES MEXICO HOLIDAYS & SPANISH/ENGLISH DATE PAD

**2027 Calendar**

**JANUARY 2027 ENERO**

TUE	WED	THU	FRI	SAT	SUN
			1	2	
5	6	7	8	9	
10	11	12	13	14	15
17	18	19	20	21	22
24	25	26	27	28	29
31					

**Your Imprint Here**

**STYLE B (STAPLED)**

**LATINO EDITION**  
INCLUDES MEXICO HOLIDAYS & SPANISH/ENGLISH DATE PAD

**2027 Calendar**

**JANUARY 2027 ENERO**

TUE	WED	THU	FRI	SAT	SUN
			1	2	
5	6	7	8	9	
10	11	12	13	14	15
17	18	19	20	21	22
24	25	26	27	28	29
31					

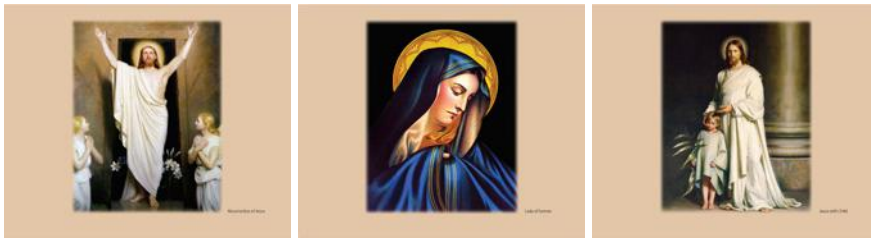
**Your Imprint Here**



**JAN** Jesus with Sacred Heart

**FEB** Guardian Angel

**MAR** St. Martin



**APR** Resurrection of Jesus

**MAY** Lady of Sorrow

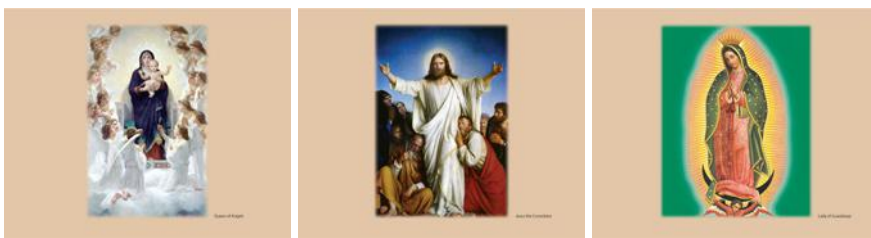
**JUN** Jesus with Child



**JUL** Trinity

**AUG** Virgin Mother & Child

**SEP** Holy Family



**OCT** Queen of Angels

**NOV** Jesus the Consolator

**DEC** Lady of Guadalupe



**IMPRINT COLOR OPTIONS**

**STANDARD ONE COLOR IMPRINT**



COLORS OTHER THAN BLACK  
SUBJECT TO ADD'L CHARGE

**FULL COLOR IMPRINT**

2+ COLORS (STANDARD COLORS)  
NON-STANDARD COLORS



SET-UP: \$25 (G)  
RUN: \$0.38 (G) EACH

AVAILABLE ONLY IN WIRE-O BOUND

**SPECIFICATIONS**

- Size (Opened):** 11" x 19"
- Size (Closed):** 11" x 10 1/2"
- Quantity of Sheets:** 14 sheets total
- Binding Type (Style A):** Wire-O Bound
- Binding Type (Style B):** Saddle Stitch / Stapled
- Imprint Area:** 9" x 1 1/2"
- Standard One Color Imprint Set-Up Charge:** See page 66 for more details
- Shipping Weight (Bulk):** 26 lbs. (100 qty / box)
- Minimum Order Qty:** 200 qty
- Additional Order Qty:** Every 100 unit / item
- Envelopes:** \$0.50 (G) each



IMPRINT COLOR OPTIONS

**STANDARD ONE COLOR IMPRINT**



BLACK REFLEX BLUE GREEN RED  
185 347 185

COLORS OTHER THAN BLACK SUBJECT TO ADD'L CHARGE

**FULL COLOR IMPRINT**

2+ COLORS (STANDARD COLORS) NON-STANDARD COLORS



SET-UP: \$25 (G)

RUN: \$0.38 (G) EACH

AVAILABLE ONLY IN WIRE-O BOUND

SPECIFICATIONS

- Size (Opened):** 11" x 19"
- Size (Closed):** 11" x 10 1/2"
- Quantity of Sheets:** 14 sheets total
- Binding Type (Style A):** Wire-O Bound
- Binding Type (Style B):** Saddle Stitch / Stapled
- Imprint Area:** 9" x 1 1/2"
- Standard One Color Imprint Set-Up Charge:** See page 66 for more details
- Shipping Weight (Bulk):** 26 lbs. (100 qty / box)
- Minimum Order Qty:** 200 qty
- Additional Order Qty:** Every 100 unit / item
- Envelopes:** \$0.50 (G) each



JAN Playa Akumal, Riviera Maya



FEB Bahía de Cacaluta, Huatulco, Oaxaca



MAR Playa Tulum, Riviera Maya



APR Playa Paradise, Tulum, Quintana Roo, Riviera Maya



MAY Playa Mahahual, Quintana Roo



JUN Isla Coronado, Baja California Sur



JUL Isla Mujeres, Cancun



AUG Playa El Mirador, Cozumel, Quintana Roo



SEP Playa Esmeralda, Puerto Vallarta



OCT Punta Mosquito, Isla Holbox, Quintana Roo



NOV Playa Balandra, Baja California Sur



DEC Isla Holbox, Quintana Roo

STYLE A (WIRE-O BOUND)



STYLE B (STAPLED)



JAN



FEB



MAR



APR



MAY



JUN



JUL



AUG



SEP



OCT



NOV



DEC



IMPRINT COLOR OPTIONS

**STANDARD ONE COLOR IMPRINT**



BLACK REFLEX GREEN RED  
BLUE 347 185

COLORS OTHER THAN BLACK  
SUBJECT TO ADD'L CHARGE

**FULL COLOR IMPRINT**

2+ COLORS (STANDARD COLORS)  
NON-STANDARD COLORS



SET-UP: \$25 (G)  
RUN: \$0.38 (G) EACH  
**AVAILABLE ONLY IN WIRE-O BOUND**

SPECIFICATIONS

- Size (Opened):** 11" x 19"
- Size (Closed):** 11" x 10 1/2"
- Quantity of Sheets:** 14 sheets total
- Binding Type (Style A):** Wire-O Bound
- Binding Type (Style B):** Saddle Stitch / Stapled
- Imprint Area:** 9" x 1 1/2"
- Standard One Color Imprint Set-Up Charge:** See page 66 for more details
- Shipping Weight (Bulk):** 26 lbs. (100 qty / box)
- Minimum Order Qty:** 200 qty
- Additional Order Qty:** Every 100 unit / item
- Envelopes:** \$0.50 (G) each



**IMPRINT COLOR OPTIONS**

**STANDARD ONE COLOR IMPRINT**



BLACK REFLEX BLUE GREEN RED  
185 347 185

COLORS OTHER THAN BLACK SUBJECT TO ADD'L CHARGE

**FULL COLOR IMPRINT**

2+ COLORS (STANDARD COLORS) NON-STANDARD COLORS



SET-UP: \$25 (G)

RUN: \$0.38 (G) EACH

AVAILABLE ONLY IN WIRE-O BOUND



JAN 2018 Bugatti Divo



FEB 2021 Vaydor Falcone



MAR 2024 Chevrolet Corvette E-Ray



APR 2017 Mercedes AMG GT4



MAY 2025 RIMAC Nevera R



JUN 2026 Zenvo Aurora

**SPECIFICATIONS**

- Size (Opened):** 11" x 19"
- Size (Closed):** 11" x 10 1/2"
- Quantity of Sheets:** 14 sheets total
- Binding Type (Style A):** Wire-O Bound
- Binding Type (Style B):** Saddle Stitch / Stapled
- Imprint Area:** 9" x 1 1/2"
- Standard One Color Imprint Set-Up Charge:** See page 66 for more details
- Shipping Weight (Bulk):** 26 lbs. (100 qty / box)
- Minimum Order Qty:** 200 qty
- Additional Order Qty:** Every 100 unit / item
- Envelopes:** \$0.50 (G) each



JUL 2024 Aspark Owl



AUG 2025 Maserati GT2 Stradale



SEP 2023 Ferrari SF90



OCT 2018 Koenigsegg Agera RS



NOV 2019 Porsche 911 GT2 RS



DEC 2024 Lamborghini Revuelto



JAN



FEB



MAR



APR



MAY



JUN



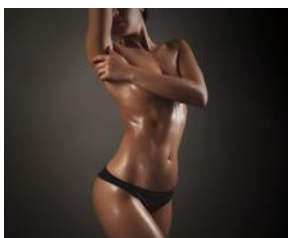
JUL



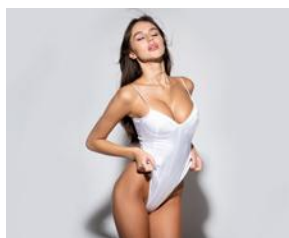
AUG



SEP



OCT



NOV



DEC



**IMPRINT COLOR OPTIONS**

**STANDARD ONE COLOR IMPRINT**



COLORS OTHER THAN BLACK SUBJECT TO ADD'L CHARGE

**FULL COLOR IMPRINT**

2+ COLORS (STANDARD COLORS) NON-STANDARD COLORS



SET-UP: \$25 (G)

RUN: \$0.38 (G) EACH

AVAILABLE ONLY IN WIRE-O BOUND

**SPECIFICATIONS**

- Size (Opened):** 11" x 19"
- Size (Closed):** 11" x 10 1/2"
- Quantity of Sheets:** 14 sheets total
- Binding Type (Style A):** Wire-O Bound
- Binding Type (Style B):** Saddle Stitch / Stapled
- Imprint Area:** 9" x 1 1/2"
- Standard One Color Imprint Set-Up Charge:** See page 66 for more details
- Shipping Weight (Bulk):** 26 lbs. (100 qty / box)
- Minimum Order Qty:** 200 qty
- Additional Order Qty:** Every 100 unit / item
- Envelopes:** \$0.50 (G) each



**IMPRINT COLOR OPTIONS**

<p><b>STANDARD ONE COLOR IMPRINT</b></p> <p>BLACK REFLEX BLUE GREEN RED 185 347 185</p> <p>COLORS OTHER THAN BLACK SUBJECT TO ADD'L CHARGE</p>	<p><b>FULL COLOR IMPRINT</b></p> <p>2+ COLORS (STANDARD COLORS) NON-STANDARD COLORS</p> <p>SET-UP: \$25 (G) RUN: \$0.38 (G) EACH</p> <p><b>AVAILABLE ONLY IN WIRE-O BOUND</b></p>
--	---



JAN



FEB



MAR



APR



MAY



JUN

**SPECIFICATIONS**

- Size (Opened):** 11" x 19"
- Size (Closed):** 11" x 10 1/2"
- Quantity of Sheets:** 14 sheets total
- Binding Type (Style A):** Wire-O Bound
- Binding Type (Style B):** Saddle Stitch / Stapled
- Imprint Area:** 9" x 1 1/2"
- Standard One Color Imprint Set-Up Charge:** See page 66 for more details
- Shipping Weight (Bulk):** 26 lbs. (100 qty / box)
- Minimum Order Qty:** 200 qty
- Additional Order Qty:** Every 100 unit / item
- Envelopes:** \$0.50 (G) each



JUL



AUG



SEP



OCT



NOV



DEC

**STYLE A (WIRE-O BOUND)**

**LATINO EDITION**  
INCLUDES SALVADORAN HOLIDAYS & SPANISH/ENGLISH DATE PAD

**El Salvador**  
-2027 CALENDAR

**Your Imprint Here**

**JANUARY 2027 ENERO**

TUE	WED	THU	FRI	SAT	SUN
			1	2	
5	6	7	8	9	
10	11	12	13	14	15
17	18	19	20	21	22
24	25	26	27	28	29
31					

**Your Imprint Here**

**STYLE B (STAPLED)**

**LATINO EDITION**  
INCLUDES SALVADORAN HOLIDAYS & SPANISH/ENGLISH DATE PAD

**El Salvador**  
-2027 CALENDAR

**Your Imprint Here**

**JANUARY 2027 ENERO**

TUE	WED	THU	FRI	SAT	SUN
			1	2	
5	6	7	8	9	
10	11	12	13	14	15
17	18	19	20	21	22
24	25	26	27	28	29
31					

**Your Imprint Here**



**JAN** Laguna de Alegría, Alegria



**FEB** Palacio Nacional, San Salvador



**MAR** El Cuco



**APR** Izalco Volcano, Cerro Verde NP



**MAY** Concepción de Ataco, Ahuachapán



**JUN** La Biblioteca Nacional de El Salvador, San Salvador



**JUL** La Libertad Beach



**AUG** Monumento al Divino Salvador del Mundo, San Salvador



**SEP** Santa Ana Volcano



**OCT** Lago de Coatepeque



**NOV** San Salvador



**DEC** Salto de Malacatiupán, Ahuachapán



### IMPRINT COLOR OPTIONS

**STANDARD ONE COLOR IMPRINT**



BLACK REFLEX GREEN RED  
BLUE 347 185

COLORS OTHER THAN BLACK  
SUBJECT TO ADD'L CHARGE

**FULL COLOR IMPRINT**

2+ COLORS (STANDARD COLORS)  
NON-STANDARD COLORS



SET-UP: \$25 (G)

RUN: \$0.38 (G) EACH

AVAILABLE ONLY IN WIRE-O BOUND

### SPECIFICATIONS

<b>Size (Opened):</b>	11" x 19"
<b>Size (Closed):</b>	11" x 10 1/2"
<b>Quantity of Sheets:</b>	14 sheets total
<b>Binding Type (Style A):</b>	Wire-O Bound
<b>Binding Type (Style B):</b>	Saddle Stitch / Stapled
<b>Imprint Area:</b>	9" x 1 1/2"
<b>Standard One Color Imprint Set-Up Charge:</b>	See page 66 for more details
<b>Shipping Weight (Bulk):</b>	26 lbs. (100 qty / box)
<b>Minimum Order Qty:</b>	200 qty
<b>Additional Order Qty:</b>	Every 100 unit / item
<b>Envelopes:</b>	\$0.50 (G) each



**IMPRINT COLOR OPTIONS**

<p><b>STANDARD ONE COLOR IMPRINT</b></p> <p>BLACK REFLEX BLUE GREEN RED 185 347 185</p> <p>COLORS OTHER THAN BLACK SUBJECT TO ADD'L CHARGE</p>	<p><b>FULL COLOR IMPRINT</b></p> <p>2+ COLORS (STANDARD COLORS) NON-STANDARD COLORS</p> <p>SET-UP: \$25 (G) RUN: \$0.38 (G) EACH</p> <p><b>AVAILABLE ONLY IN WIRE-O BOUND</b></p>
--	---



JAN



FEB



MAR



APR



MAY



JUN

**SPECIFICATIONS**

- Size (Opened):** 11" x 19"
- Size (Closed):** 11" x 10 1/2"
- Quantity of Sheets:** 14 sheets total
- Binding Type (Style A):** Wire-O Bound
- Binding Type (Style B):** Saddle Stitch / Stapled
- Imprint Area:** 9" x 1 1/2"
- Standard One Color Imprint Set-Up Charge:** See page 66 for more details
- Shipping Weight (Bulk):** 26 lbs. (100 qty / box)
- Minimum Order Qty:** 200 qty
- Additional Order Qty:** Every 100 unit / item
- Envelopes:** \$0.50 (G) each



JUL



AUG



SEP



OCT



NOV



DEC

## STYLE A (WIRE-O BOUND)



## STYLE B (STAPLED)



JAN



FEB



MAR



APR



MAY



JUN



JUL



AUG



SEP



OCT



NOV



DEC



### IMPRINT COLOR OPTIONS

**STANDARD ONE COLOR IMPRINT**



BLACK REFLEX GREEN RED  
BLUE 347 185

COLORS OTHER THAN BLACK  
SUBJECT TO ADD'L CHARGE

**FULL COLOR IMPRINT**

2+ COLORS (STANDARD COLORS)  
NON-STANDARD COLORS



SET-UP: \$25 (G)  
RUN: \$0.38 (G) EACH

AVAILABLE ONLY IN WIRE-O BOUND

### SPECIFICATIONS

- Size (Opened):** 11" x 19"
- Size (Closed):** 11" x 10 1/2"
- Quantity of Sheets:** 14 sheets total
- Binding Type (Style A):** Wire-O Bound
- Binding Type (Style B):** Saddle Stitch / Stapled
- Imprint Area:** 9" x 1 1/2"
- Standard One Color Imprint Set-Up Charge:** See page 66 for more details
- Shipping Weight (Bulk):** 26 lbs. (100 qty / box)
- Minimum Order Qty:** 200 qty
- Additional Order Qty:** Every 100 unit / item
- Envelopes:** \$0.50 (G) each



IMPRINT COLOR OPTIONS

**STANDARD ONE COLOR IMPRINT**



BLACK REFLEX BLUE GREEN RED  
185 347 185

COLORS OTHER THAN BLACK SUBJECT TO ADD'L CHARGE

**FULL COLOR IMPRINT**

2+ COLORS (STANDARD COLORS) NON-STANDARD COLORS



SET-UP: \$25 (G)

RUN: \$0.38 (G) EACH

AVAILABLE ONLY IN WIRE-O BOUND



JAN



FEB



MAR



APR



MAY



JUN

SPECIFICATIONS

- Size (Opened):** 11" x 19"
- Size (Closed):** 11" x 10 1/2"
- Quantity of Sheets:** 14 sheets total
- Binding Type (Style A):** Wire-O Bound
- Binding Type (Style B):** Saddle Stitch / Stapled
- Imprint Area:** 9" x 1 1/2"
- Standard One Color Imprint Set-Up Charge:** See page 66 for more details
- Shipping Weight (Bulk):** 26 lbs. (100 qty / box)
- Minimum Order Qty:** 200 qty
- Additional Order Qty:** Every 100 unit / item
- Envelopes:** \$0.50 (G) each



JUL



AUG



SEP



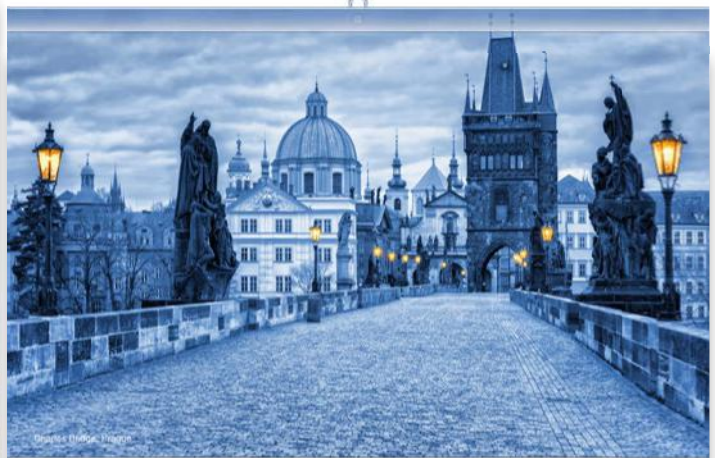
OCT



NOV



DEC



DECEMBER 2026

SUNDAY	MONDAY	TUESDAY	WEDNESDAY	THURSDAY	FRIDAY	SATURDAY
		1	2	3	4	5
6	7	8	9	10	11	12
13	14	15	16	17	18	19
20	21	22	23	24	25	26
27	28	29	30	31		

JANUARY 2027

SUNDAY	MONDAY	TUESDAY	WEDNESDAY	THURSDAY	FRIDAY	SATURDAY
					1	2
3	4	5	6	7	8	9
10	11	12	13	14	15	16
17	18	19	20	21	22	23
24	25	26	27	28	29	30
31						

FEBRUARY 2027

SUNDAY	MONDAY	TUESDAY	WEDNESDAY	THURSDAY	FRIDAY	SATURDAY
	1	2	3	4	5	6
7	8	9	10	11	12	13
14	15	16	17	18	19	20
21	22	23	24	25	26	27
28						

**SPECIFICATIONS**

- Size (Opened):** 13 1/2" x 25 1/2"
- Size (Closed):** 13 1/2" x 12 3/4"
- Quantity of Sheets:** 13 sheets total
- Binding Type:** Wire-O Bound
- Imprint Area:** 12" x 1 3/4"
- Imprint Color:** Black
- Minimum Order Qty:** 200 qty.
- Change of Copy:** \$30.00 (G) each
- Standard One Color Imprint Set-Up Charge:** \$45.00 (G)
- Each Add'l Color:** \$45.00 (G) set-up + \$0.35 (G) each run
- Shipping Weight (Bulk):** 31 lbs. (50 qty / box)
- Plain Envelopes (Bulk):** \$0.75 (G) each
- Clear Plastic Hanger:** \$0.75 (G) each

Your Imprint Here

\*Sample images are displayed with a clear plastic (acetate) adhesive hanger. (OPTIONAL)





**JAN** Charles Bridge, Prague



**FEB** Ghent, Flanders, Belgium



**MAR** Village of Oia, Santorini, Greece



**APR** Hwaseong Fortress, Suwon, South Korea



**MAY** Stari Most, Mostar, Bosnia and Herzegovina



**JUN** Dom Luís I Bridge, Porto, Portugal



**JUL** Fort Lovrijenac, Dubrovnik, Croatia



**AUG** Hallstatt, Austria



**SEP** Selfoss Waterfall, Vatnajökull NP, Iceland



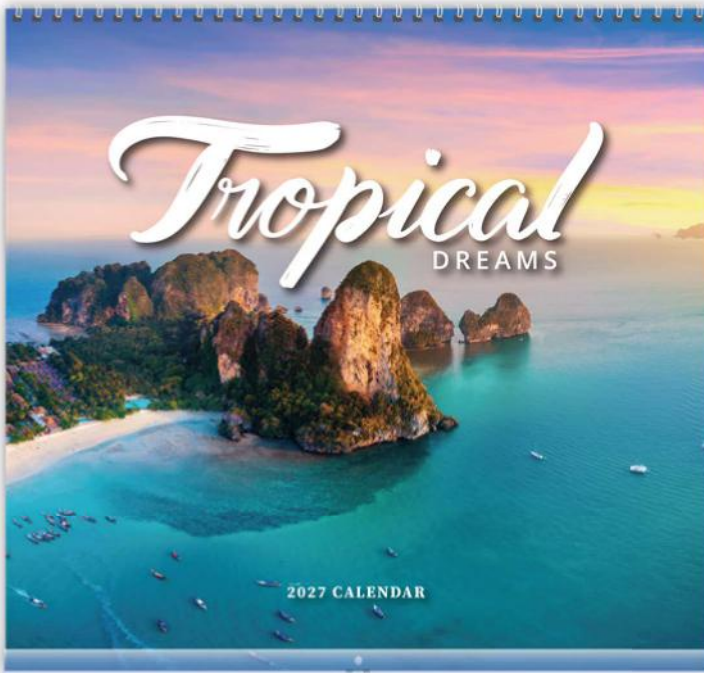
**OCT** Phra Mahathat Chedi Si Wiang Chai, Thailand



**NOV** Sharjah Mosque, Emirate of Sharjah, United Arab Emirates



**DEC** Seiser Alm, Dolomites, Italy



DECEMBER 2026

SUNDAY	MONDAY	TUESDAY	WEDNESDAY	THURSDAY	FRIDAY	SATURDAY
		1 <small>Last Quarter</small>	2	3	4	5 <small>Full Moon</small>
6	7 <small>First Quarter</small>	8 <small>Waxing Gibbous</small>	9	10	11	12
13	14 <small>Waxing Gibbous</small>	15	16	17	18	19
20	21 <small>Waxing Gibbous</small>	22	23	24 <small>Waxing Gibbous</small>	25 <small>Waxing Gibbous</small>	26 <small>Waxing Gibbous</small>
27	28	29	30	31 <small>Last Quarter</small>		

JANUARY 2027

SUNDAY	MONDAY	TUESDAY	WEDNESDAY	THURSDAY	FRIDAY	SATURDAY
					1 <small>New Year's Day</small>	2
3	4	5	6 <small>Epiphany</small>	7 <small>New Year's Day</small>	8	9
10	11	12	13	14	15	16
17	18 <small>Martin Luther King Jr. Day</small>	19	20	21	22 <small>Full Moon</small>	23
24	25	26	27	28	29	30
31						

FEBRUARY 2027

SUNDAY	MONDAY	TUESDAY	WEDNESDAY	THURSDAY	FRIDAY	SATURDAY
	1 <small>Monday</small>	2 <small>Tuesday</small>	3 <small>Wednesday</small>	4 <small>Thursday</small>	5 <small>Friday</small>	6 <small>Saturday</small>
7 <small>Sunday</small>	8	9	10	11	12	13
14	15 <small>Full Moon</small>	16	17	18	19	20
21	22	23	24	25	26	27
28						

Your Imprint Here

\*Sample images are displayed with a clear plastic (acetate) adhesive hanger. (OPTIONAL)

SPECIFICATIONS

- Size (Opened):** 13 1/2" x 25 1/2"
- Size (Closed):** 13 1/2" x 12 3/4"
- Quantity of Sheets:** 13 sheets total
- Binding Type:** Wire-O Bound
- Imprint Area:** 12" x 1 3/4"
- Imprint Color:** Black
- Minimum Order Qty:** 200 qty.
- Change of Copy:** \$30.00 (G) each
- Standard One Color Imprint Set-Up Charge:** \$45.00 (G)
- Each Add'l Color:** \$45.00 (G) set-up + \$0.35 (G) each run
- Shipping Weight (Bulk):** 31 lbs. (50 qty / box)
- Plain Envelopes (Bulk):** \$0.75 (G) each
- Clear Plastic Hanger:** \$0.75 (G) each





**JAN** Playa Dorada, Puerto Plata, Dominican Republic



**FEB** Fteri Beach, Kefalonia, Greece



**MAR** Shimizu Island, Palawan, Philippines



**APR** Railay Beach, Krabi, Thailand



**MAY** Egg Stone Beach, Vietnam



**JUN** Thulhagiri Island Resort, North Malé Atoll, Maldives



**JUL** Tropic of Cancer Beach, Bahamas



**AUG** Anse Lazio Beach, Praslin Island, Seychelles



**SEP** Kerama Islands, Japan



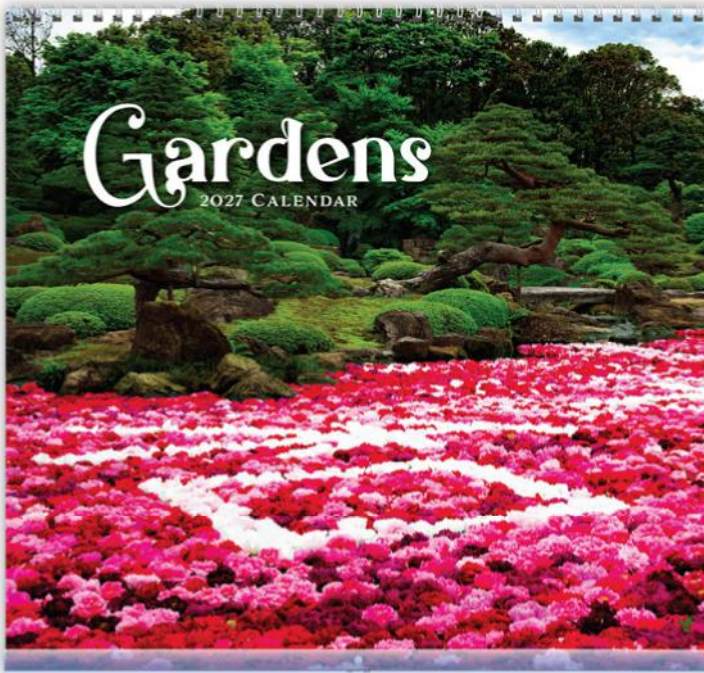
**OCT** Wakatobi National Park, Indonesia



**NOV** Scopello Beach, Sicily, Italy



**DEC** Mauritius Island



DECEMBER 2026

SUNDAY	MONDAY	TUESDAY	WEDNESDAY	THURSDAY	FRIDAY	SATURDAY
		1 <small>Last Quarter</small>	2	3	4	5 <small>Full Moon</small>
6	7 <small>First Quarter</small>	8 <small>Waxing Gibbous</small>	9	10	11	12
13	14	15	16	17	18	19
20	21 <small>Waxing Gibbous</small>	22	23	24 <small>Full Moon</small>	25	26
27	28	29	30	31 <small>New Moon</small>		

JANUARY 2027

SUNDAY	MONDAY	TUESDAY	WEDNESDAY	THURSDAY	FRIDAY	SATURDAY
					1 <small>New Year's Day</small>	2
3	4	5	6	7	8	9
10	11	12	13	14	15	16
17	18	19	20	21	22	23
24	25 <small>Martin Luther King Jr. Day</small>	26	27	28	29	30
31						

FEBRUARY 2027

SUNDAY	MONDAY	TUESDAY	WEDNESDAY	THURSDAY	FRIDAY	SATURDAY
	1	2	3	4	5	6
7	8	9	10	11	12	13
14	15	16	17	18	19	20
21	22	23	24	25	26	27
28						

Your Imprint Here

\*Sample images are displayed with a clear plastic (acetate) adhesive hanger. (OPTIONAL)

SPECIFICATIONS

- Size (Opened):** 13 1/2" x 25 1/2"
- Size (Closed):** 13 1/2" x 12 3/4"
- Quantity of Sheets:** 13 sheets total
- Binding Type:** Wire-O Bound
- Imprint Area:** 12" x 1 3/4"
- Imprint Color:** Black
- Minimum Order Qty:** 200 qty.
- Change of Copy:** \$30.00 (G) each
- Standard One Color Imprint Set-Up Charge:** \$45.00 (G)
- Each Add'l Color:** \$45.00 (G) set-up + \$0.35 (G) each run
- Shipping Weight (Bulk):** 31 lbs. (50 qty / box)
- Plain Envelopes (Bulk):** \$0.75 (G) each
- Clear Plastic Hanger:** \$0.75 (G) each





JAN



FEB



MAR



APR



MAY



JUN



JUL



AUG



SEP



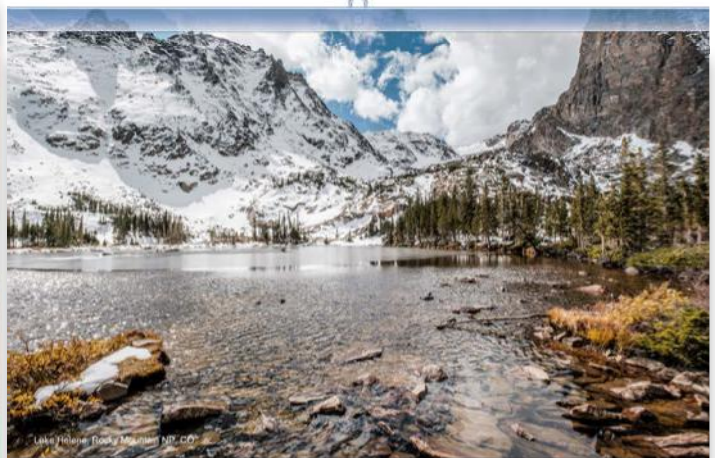
OCT



NOV



DEC



DECEMBER 2026

SUNDAY	MONDAY	TUESDAY	WEDNESDAY	THURSDAY	FRIDAY	SATURDAY
		1 <small>Lab. Holiday</small>	2	3	4	5 <small>Thanksgiving</small>
6	7 <small>Thanksgiving Day</small>	8 <small>Thanksgiving</small>	9 <small>Wed. Holiday</small>	10	11	12
13	14	15	16	17	18	19
20 <small>Winter Holiday</small>	21	22	23 <small>Winter Holiday</small>	24 <small>Winter Holiday</small>	25 <small>Winter Holiday</small>	26 <small>Winter Holiday</small>
27	28	29	30 <small>Lab. Holiday</small>	31 <small>Wed. Holiday</small>		

JANUARY 2027

SUNDAY	MONDAY	TUESDAY	WEDNESDAY	THURSDAY	FRIDAY	SATURDAY
					1 <small>New Year's Day</small>	2
3	4	5	6 <small>Winter Holiday</small>	7 <small>Winter Holiday</small>	8 <small>Winter Holiday</small>	9
10	11	12	13	14	15	16
17	18	19	20	21	22 <small>Winter Holiday</small>	23
24 <small>Winter Holiday</small>	25 <small>Winter Holiday</small>	26	27	28	29	30
31						

FEBRUARY 2027

SUNDAY	MONDAY	TUESDAY	WEDNESDAY	THURSDAY	FRIDAY	SATURDAY
	1	2 <small>Winter Holiday</small>	3	4	5	6 <small>Winter Holiday</small>
7 <small>Winter Holiday</small>	8	9 <small>Winter Holiday</small>	10 <small>Winter Holiday</small>	11	12 <small>Winter Holiday</small>	13
14 <small>Winter Holiday</small>	15 <small>Winter Holiday</small>	16	17	18	19	20
21 <small>Winter Holiday</small>	22	23	24	25	26	27
28 <small>Winter Holiday</small>						

Your Imprint Here

\*Sample images are displayed with a clear plastic (acetate) adhesive hanger. (OPTIONAL)

**SPECIFICATIONS**

- Size (Opened):** 13 1/2" x 25 1/2"
- Size (Closed):** 13 1/2" x 12 3/4"
- Quantity of Sheets:** 13 sheets total
- Binding Type:** Wire-O Bound
- Imprint Area:** 12" x 1 3/4"
- Imprint Color:** Black
- Minimum Order Qty:** 200 qty.
- Change of Copy:** \$30.00 (G) each
- Standard One Color Imprint Set-Up Charge:** \$45.00 (G)
- Each Add'l Color:** \$45.00 (G) set-up + \$0.35 (G) each run
- Shipping Weight (Bulk):** 31 lbs. (50 qty / box)
- Plain Envelopes (Bulk):** \$0.75 (G) each
- Clear Plastic Hanger:** \$0.75 (G) each





**JAN** Lake Helene, Rocky Mountain NP, CO



**FEB** Bisti Badlands, NM



**MAR** St. Charles Avenue, New Orleans, LA



**APR** Nashville, TN



**MAY** Sylvan Lake, Custer State Park, SD



**JUN** Saguaro NP, Sonoran Desert, Tucson, AZ



**JUL** Statue of Liberty, Liberty Island, New York, NY



**AUG** South Pointe Park, Miami Beach, FL



**SEP** John A. Roebling Suspension Bridge, Cincinnati, OH



**OCT** Piedmont Park, Atlanta, GA



**NOV** St. Paul, MN



**DEC** Bodie Island Lighthouse, NC



## STYLE A (WHITE PAPER STAND)

- Size:** 8 1/4" x 5 1/4"
- Quantity of Sheets:** 13 sheets total
- Binding Type:** Wire-O Bound
- Imprint Area:** 7" x 3/4"
- Minimum Order Qty:** 200 qty.
- Shipping Weight (Bulk):** 20 lbs. (100 qty / box)
- Less than Minimum:** 100 qty. \$35(G) each

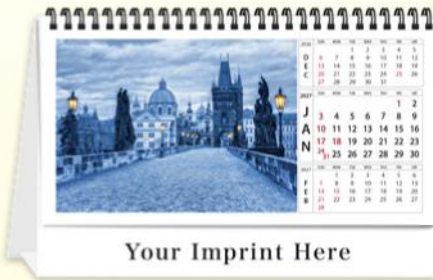


## STYLE B (HEAVY BOARD STAND)

- Size:** 8 1/4" x 5 1/4"
- Quantity of Sheets:** 13 sheets total
- Binding Type:** Wire-O Bound
- Imprint Area:** 7" x 3/4"
- Minimum Order Qty:** 200 qty.
- Shipping Weight (Bulk):** 20 lbs. (50 qty / box)
- Less than Minimum:** 100 qty. \$35(G) each

## OPTIONS

### White Paper Stand w/ Black Imprint



**STANDARD  
BLACK  
IMPRINT**

INCLUDED

### Black Heavy Board Stand w/ Gold Foil Imprint



**GOLD FOIL  
IMPRINT**

NEW DIE CHARGE: \$80.00 (G)

### White Paper Stand w/ Full Color Imprint



**FULL COLOR  
IMPRINT**

SET-UP: \$35 (G)  
RUN: \$0.45 (G) EACH

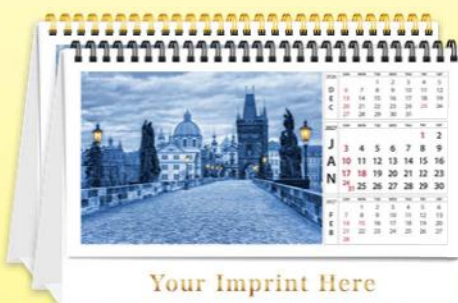
### Burgundy Heavy Board Stand w/ Gold Foil Imprint



**GOLD FOIL  
IMPRINT**

NEW DIE CHARGE: \$80.00 (G)

### White Paper Stand w/ Gold Foil Imprint



**GOLD FOIL  
IMPRINT**

NEW DIE CHARGE: \$80.00 (G)  
GOLD WIRE-O: \$0.25 (G)

WIRE-O COLOR OPTION: GOLD/BLACK

BURGUNDY BOARD W/ GOLD WIRE \$0.30 (G) EACH

STYLE A (WHITE PAPER STAND)

STYLE B (HEAVY BOARD STAND)

Specifications for both styles page 49 for details

White Paper Stand w/ Black Imprint



**STANDARD BLACK IMPRINT**

INCLUDED

Your Imprint Here

White Paper Stand w/ Full Color Imprint



**FULL COLOR IMPRINT**

SET-UP: \$35 (G)  
RUN: \$0.45 (G) EACH

Your Imprint Here

White Paper Stand w/ Gold Foil Imprint



**GOLD FOIL IMPRINT**

NEW DIE CHARGE: \$80.00 (G)  
GOLD WIRE-0: \$0.25 (G)

WIRE-COLOR OPTION: GOLD/BLACK

Your Imprint Here

Black Heavy Board Stand w/ Gold Foil Imprint



Imprint Here

**GOLD FOIL IMPRINT**

NEW DIE CHARGE: \$80.00 (G)

Your Imprint Here

Burgundy Heavy Board Stand w/ Gold Foil Imprint



Imprint Here

**GOLD FOIL IMPRINT**

NEW DIE CHARGE: \$80.00 (G)

Your Imprint Here

BURGUNDY BOARD W/ GOLD WIRE \$0.30 (G) EACH



JAN Charles Bridge, Prague



FEB Ghent, Flanders, Belgium



MAR Village of Oia, Santorini, Greece



APR Hwaseong Fortress, Suwon, South Korea



MAY Stari Most, Mostar, Bosnia and Herzegovina



JUN Dom Luís I Bridge, Porto, Portugal



JUL Fort Lovrijenac, Dubrovnik, Croatia



AUG Hallstatt, Austria



SEP Selfoss Waterfall, Vatnajökull NP, Iceland



OCT Phra Mahathat Chedi Si Wiang Chai, Thailand



NOV Sharjah Mosque, Emirate of Sharjah, United Arab Emirates



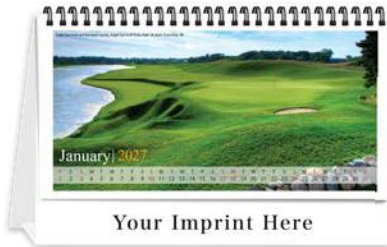
DEC Seiser Alm, Dolomites, Italy

STYLE A (WHITE PAPER STAND)

STYLE B (HEAVY BOARD STAND)

Specifications for both styles page 49 for details

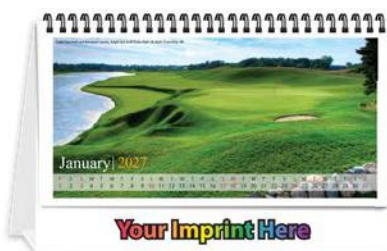
White Paper Stand w/ Black Imprint



**STANDARD BLACK IMPRINT**

INCLUDED

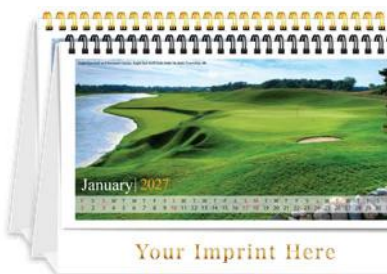
White Paper Stand w/ Full Color Imprint



**FULL COLOR IMPRINT**

SET-UP: \$35 (G)  
RUN: \$0.45 (G) EACH

White Paper Stand w/ Gold Foil Imprint

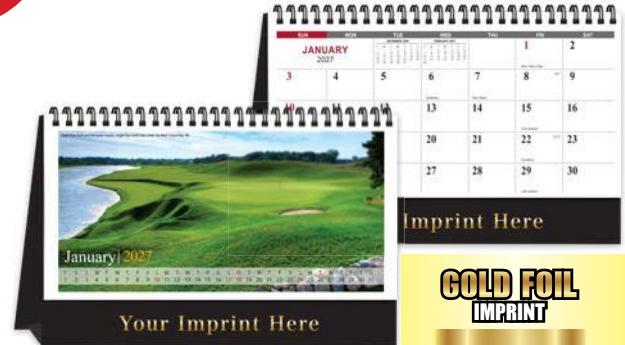


**GOLD FOIL IMPRINT**

NEW DIE CHARGE: \$80.00 (G)  
GOLD WIRE-0: \$0.25 (G)

WIRE-COLOR OPTION: GOLD/BLACK

Black Heavy Board Stand w/ Gold Foil Imprint



**GOLD FOIL IMPRINT**

NEW DIE CHARGE: \$80.00 (G)

Burgundy Heavy Board Stand w/ Gold Foil Imprint



**GOLD FOIL IMPRINT**

NEW DIE CHARGE: \$80.00 (G)



**JAN** Eagle Eye Golf and Banquet Center, Eagle Eye Golf Club, Hole 18, Bath Township, MI



**FEB** Indian River Club, Hole 16, Vero Beach, FL



**MAR** Country Club of Landfall, Hole 18, Wilmington, NC



**APR** Gulf Stream Golf Course, Hole 18, Delray Beach, FL



**MAY** Pristine Bay Resort, The Black Pearl Golf Course, Hole 11, Roatan, Honduras



**JUN** Trump International Golf Club West Palm Beach, Hole 1, West Palm Beach, FL



**JUL** Fisher Island Club, The Links at Fisher Island, Hole 6 & 7, Fisher Island, FL



**AUG** Country Club of Landfall, Hole 17, Wilmington, NC



**SEP** Cherry Hills Country Club, Hole 17, Cherry Hills Village, CO



**OCT** French Lick Resort, Pete Dye Course, Hole 11 & 12, French Lick, IN



**NOV** French Lick Resort, Pete Dye Course, Hole 14 Behind, French Lick, IN



**DEC** Cape Arundel Golf Course, Hole 6, Kennebunkport, ME

STYLE A (WHITE PAPER STAND)

STYLE B (HEAVY BOARD STAND)

Specifications  
for both styles  
page 49 for details

White Paper Stand w/ Black Imprint



**STANDARD  
BLACK  
IMPRINT**

INCLUDED

Your Imprint Here

White Paper Stand w/ Full Color Imprint



**FULL COLOR  
IMPRINT**

SET-UP: \$35 (G)  
RUN: \$0.45 (G) EACH

Your Imprint Here

White Paper Stand w/ Gold Foil Imprint



**GOLD FOIL  
IMPRINT**

NEW DIE CHARGE: \$80.00 (G)  
GOLD WIRE-0: \$0.25 (G)

WIRE-COLOR OPTION: GOLD/BLACK

Your Imprint Here

Black Heavy Board Stand w/ Gold Foil Imprint



Imprint Here

**GOLD FOIL  
IMPRINT**

NEW DIE CHARGE: \$80.00 (G)

Your Imprint Here

Burgundy Heavy Board Stand w/ Gold Foil Imprint



Imprint Here

**GOLD FOIL  
IMPRINT**

NEW DIE CHARGE: \$80.00 (G)

Your Imprint Here

BURGUNDY BOARD W/ GOLD WIRE \$0.30 (G) EACH



JAN



FEB



MAR



APR



MAY



JUN



JUL



AUG



SEP



OCT



NOV



DEC

STYLE A (WHITE PAPER STAND)

STYLE B (HEAVY BOARD STAND)

Specifications for both styles page 49 for details

White Paper Stand w/ Black Imprint



**STANDARD BLACK IMPRINT**

INCLUDED

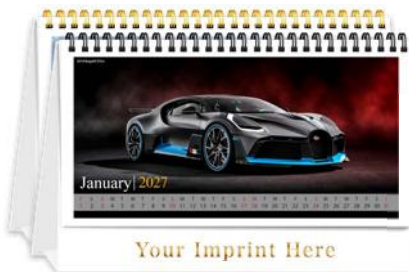
White Paper Stand w/ Full Color Imprint



**FULL COLOR IMPRINT**

SET-UP: \$35 (G)  
RUN: \$0.45 (G) EACH

White Paper Stand w/ Gold Foil Imprint



**GOLD FOIL IMPRINT**

NEW DIE CHARGE: \$80.00 (G)  
GOLD WIRE-0: \$0.25 (G)

WIRE-COLOR OPTION: GOLD/BLACK

Black Heavy Board Stand w/ Gold Foil Imprint



**GOLD FOIL IMPRINT**

NEW DIE CHARGE: \$80.00 (G)

Burgundy Heavy Board Stand w/ Gold Foil Imprint



**GOLD FOIL IMPRINT**

NEW DIE CHARGE: \$80.00 (G)



JAN 2018 Bugatti Divo



FEB 2021 Vaydor Falcone



MAR 2024 Chevrolet Corvette E-Ray



APR 2017 Mercedes AMG GT4



MAY 2025 RIMAC Nevera R



JUN 2026 Zenvo Aurora



JUL 2024 Aspark Owl



AUG 2025 Maserati GT2 Stradale



SEP 2023 Ferrari SF90



OCT 2018 Koenigsegg Agera RS



NOV 2019 Porsche 911 GT2 RS



DEC 2024 Lamborghini Revuelto

STYLE A (WHITE PAPER STAND)

STYLE B (HEAVY BOARD STAND)

Specifications for both styles page 49 for details

White Paper Stand w/ Black Imprint



**STANDARD BLACK IMPRINT**

INCLUDED

Your Imprint Here

White Paper Stand w/ Full Color Imprint



**FULL COLOR IMPRINT**

SET-UP: \$35 (G)  
RUN: \$0.45 (G) EACH

Your Imprint Here

White Paper Stand w/ Gold Foil Imprint



**GOLD FOIL IMPRINT**

NEW DIE CHARGE: \$80.00 (G)  
GOLD WIRE-0: \$0.25 (G)

WIRE-COLOR OPTION: GOLD/BLACK

Your Imprint Here

Black Heavy Board Stand w/ Gold Foil Imprint



Imprint Here

**GOLD FOIL IMPRINT**

NEW DIE CHARGE: \$80.00 (G)

Your Imprint Here

Burgundy Heavy Board Stand w/ Gold Foil Imprint



Imprint Here

**GOLD FOIL IMPRINT**

NEW DIE CHARGE: \$80.00 (G)

Your Imprint Here

BURGUNDY BOARD W/ GOLD WIRE \$0.30 (G) EACH



**JAN** Playa Dorada, Puerto Plata, Dominican Republic



**FEB** Fteri Beach, Kefalonia, Greece



**MAR** Shimizu Island, Palawan, Philippines



**APR** Railay Beach, Krabi, Thailand



**MAY** Egg Stone Beach, Vietnam



**JUN** Thulhagiri Island Resort, North Malé Atoll, Maldives



**JUL** Tropic of Cancer Beach, Bahamas



**AUG** Anse Lazio Beach, Praslin Island, Seychelles



**SEP** Kerama Islands, Japan



**OCT** Wakatobi National Park, Indonesia



**NOV** Scopello Beach, Sicily, Italy



**DEC** Mauritius Island

STYLE A (WHITE PAPER STAND)

STYLE B (HEAVY BOARD STAND)

Specifications for both styles page 49 for details

White Paper Stand w/ Black Imprint



**STANDARD BLACK IMPRINT**

INCLUDED

Your Imprint Here

White Paper Stand w/ Full Color Imprint



**FULL COLOR IMPRINT**

SET-UP: \$35 (G)  
RUN: \$0.45 (G) EACH

Your Imprint Here

White Paper Stand w/ Gold Foil Imprint



**GOLD FOIL IMPRINT**

NEW DIE CHARGE: \$80.00 (G)  
GOLD WIRE-0: \$0.25 (G)

WIRE-COLOR OPTION: GOLD/BLACK

Your Imprint Here

Black Heavy Board Stand w/ Gold Foil Imprint



Imprint Here

**GOLD FOIL IMPRINT**

NEW DIE CHARGE: \$80.00 (G)

Your Imprint Here

Burgundy Heavy Board Stand w/ Gold Foil Imprint



Imprint Here

**GOLD FOIL IMPRINT**

NEW DIE CHARGE: \$80.00 (G)

Your Imprint Here

BURGUNDY BOARD W/ GOLD WIRE \$0.30 (G) EACH



JAN Beagle



FEB Toy Poodle



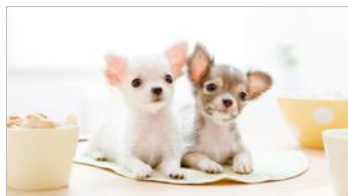
MAR Cavalier King Charles Spaniel



APR Bloodhound



MAY French Bulldog



JUN Chihuahua



JUL Samoyed



AUG Shih Tzu



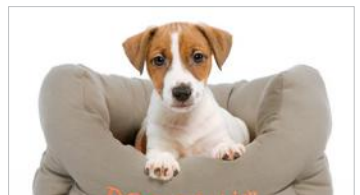
SEP Border Collie



OCT Boston Terrier



NOV Golden Retriever



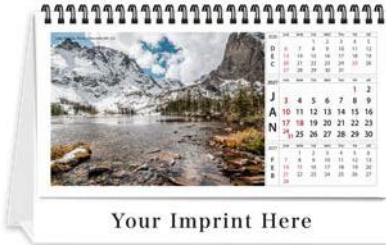
DEC Jack Russell Terrier

STYLE A (WHITE PAPER STAND)

STYLE B (HEAVY BOARD STAND)

Specifications for both styles page 49 for details

White Paper Stand w/ Black Imprint



**STANDARD BLACK IMPRINT**

INCLUDED

Your Imprint Here

White Paper Stand w/ Full Color Imprint



**FULL COLOR IMPRINT**

SET-UP: \$35 (G)  
RUN: \$0.45 (G) EACH

Your Imprint Here

White Paper Stand w/ Gold Foil Imprint



**GOLD FOIL IMPRINT**

NEW DIE CHARGE: \$80.00 (G)  
GOLD WIRE-0: \$0.25 (G)

WIRE-COLOR OPTION: GOLD/BLACK

Your Imprint Here

Black Heavy Board Stand w/ Gold Foil Imprint



Imprint Here

**GOLD FOIL IMPRINT**

NEW DIE CHARGE: \$80.00 (G)

Your Imprint Here

Burgundy Heavy Board Stand w/ Gold Foil Imprint



Imprint Here

**GOLD FOIL IMPRINT**

NEW DIE CHARGE: \$80.00 (G)

Your Imprint Here

BURGUNDY BOARD W/ GOLD WIRE \$0.30 (G) EACH



JAN Lake Helene, Rocky Mountain NP, CO



FEB Bisti Badlands, NM



MAR St. Charles Avenue, New Orleans, LA



APR Nashville, TN



MAY Sylvan Lake, Custer State Park, SD



JUN Saguaro NP, Sonoran Desert, Tucson, AZ



JUL Statue of Liberty, Liberty Island, New York, NY



AUG South Pointe Park, Miami Beach, FL



SEP John A. Roebling Suspension Bridge, Cincinnati, OH



OCT Piedmont Park, Atlanta, GA



NOV St. Paul, MN



DEC Bodie Island Lighthouse, NC



## STYLE A (WHITE PAPER STAND)

- Size:** 8 1/4" x 5 1/4"
- Quantity of Sheets:** 13 sheets total
- Binding Type:** Wire-O Bound
- Imprint Area:** 7" x 3/4"
- Minimum Order Qty:** 200 qty.
- Shipping Weight (Bulk):** 22 lbs. (100 qty / box)
- Less than Minimum:** 100 qty. \$35(G) each

## STYLE B (HEAVY BOARD STAND)

- Size:** 8 1/4" x 5 1/4"
- Quantity of Sheets:** 13 sheets total
- Binding Type:** Wire-O Bound
- Imprint Area:** 7" x 3/4"
- Minimum Order Qty:** 200 qty.
- Shipping Weight (Bulk):** 22 lbs. (50 qty / box)
- Less than Minimum:** 100 qty. \$35(G) each

## OPTIONS

### White Paper Stand w/ Black Imprint



**STANDARD BLACK IMPRINT**  
INCLUDED

### Black Heavy Board Stand w/ Imprint



**STANDARD BLACK IMPRINT**  
INCLUDED

**FULL COLOR IMPRINT**  
SET-UP: \$50 (G)  
RUN: \$0.65 (G) EACH

### White Paper Stand w/ Full Color Imprint



**FULL COLOR IMPRINT**  
SET-UP: \$50 (G)  
RUN: \$0.65 (G) EACH

### Burgundy Heavy Board Stand w/ Imprint



**STANDARD BLACK IMPRINT**  
INCLUDED

**FULL COLOR IMPRINT**  
SET-UP: \$50 (G)  
RUN: \$0.65 (G) EACH

BURGUNDY BOARD W/ GOLD WIRE \$0.30 (G) EACH

STYLE A (WHITE PAPER STAND)

STYLE B (HEAVY BOARD STAND)

Specifications  
for both styles  
page 57 for details

White Paper Stand w/ Black Imprint



Black Heavy Board Stand w/ Black Wire

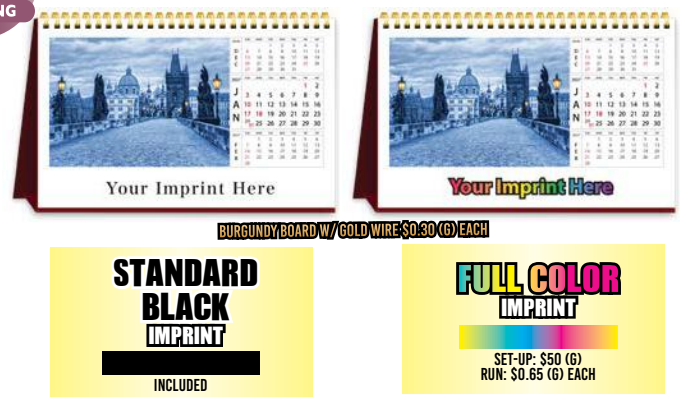


White Paper Stand w/ Full Color Imprint



EVERY SHEET  
IM  
PRINTING

Burgundy Heavy Board Stand w/ Gold Wire



BURGUNDY BOARD W/ GOLD WIRE \$0.80 (G) EACH



JAN Charles Bridge, Prague



FEB Ghent, Flanders, Belgium



MAR Village of Oia, Santorini, Greece



APR Hwaseong Fortress, Suwon, South Korea



MAY Stari Most, Mostar, Bosnia and Herzegovina



JUN Dom Luís I Bridge, Porto, Portugal



JUL Fort Lovrijenac, Dubrovnik, Croatia



AUG Hallstatt, Austria



SEP Selfoss Waterfall, Vatnajökull NP, Iceland



OCT Phra Mahathat Chedi Si Wiang Chai, Thailand



NOV Sharjah Mosque, Emirate of Sharjah, United Arab Emirates



DEC Seiser Alm, Dolomites, Italy

STYLE A (WHITE PAPER STAND)

STYLE B (HEAVY BOARD STAND)

Specifications  
for both styles  
page 57 for details

White Paper Stand w/ Black Imprint



Black Heavy Board Stand w/ Black Wire



White Paper Stand w/ Full Color Imprint



EVERY SHEET  
IM  
PRINTING

Burgundy Heavy Board Stand w/ Gold Wire



JAN Lake Helene, Rocky Mountain NP, CO



FEB Bisti Badlands, NM



MAR St. Charles Avenue, New Orleans, LA



APR Nashville, TN



MAY Sylvan Lake, Custer State Park, SD



JUN Saguaro NP, Sonoran Desert, Tucson, AZ



JUL Statue of Liberty, Liberty Island, New York, NY



AUG South Pointe Park, Miami Beach, FL



SEP John A. Roebling Suspension Bridge, Cincinnati, OH



OCT Piedmont Park, Atlanta, GA



NOV St. Paul, MN



DEC Bodie Island Lighthouse, NC

STYLE A (WHITE PAPER STAND)

STYLE B (HEAVY BOARD STAND)

Specifications  
for both styles  
page 57 for details

White Paper Stand w/ Black Imprint



Black Heavy Board Stand w/ Black Wire

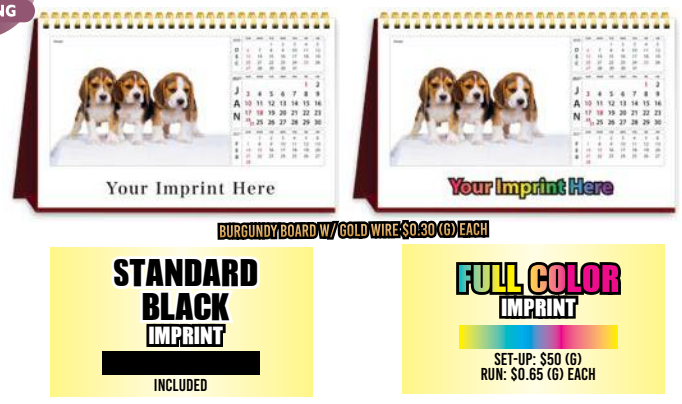


White Paper Stand w/ Full Color Imprint



EVERY SHEET  
IM  
PRINTING

Burgundy Heavy Board Stand w/ Gold Wire



JAN Beagle



FEB Toy Poodle



MAR Cavalier King Charles Spaniel



APR Bloodhound



MAY French Bulldog



JUN Chihuahua



JUL Samoyed



AUG Shih Tzu



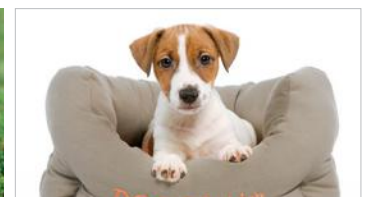
SEP Border Collie



OCT Boston Terrier



NOV Golden Retriever



DEC Jack Russell Terrier

STYLE A (WHITE PAPER STAND)

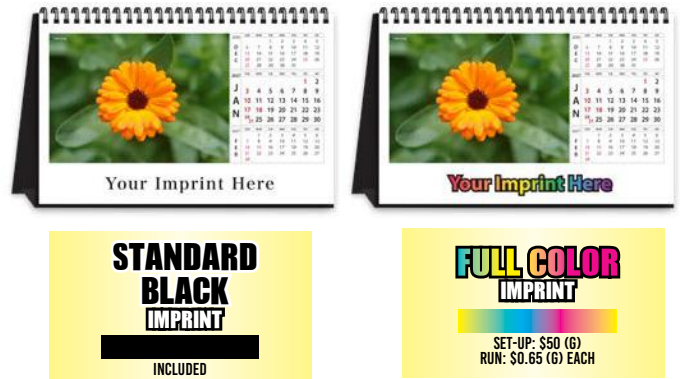
STYLE B (HEAVY BOARD STAND)

Specifications  
for both styles  
page 57 for details

White Paper Stand w/ Black Imprint



Black Heavy Board Stand w/ Black Wire

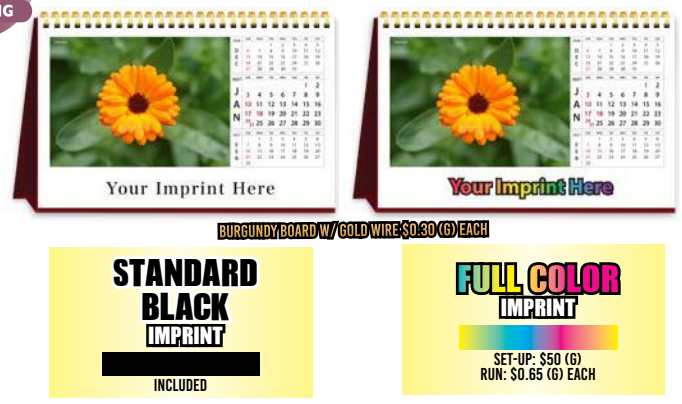


White Paper Stand w/ Full Color Imprint



EVERY SHEET  
IM  
PRINTING

Burgundy Heavy Board Stand w/ Gold Wire



JAN Calendula



FEB Japanese Camellia



MAR Hyacinth



APR Daffodil



MAY Peony



JUN English Rose



JUL Dahlia



AUG Sunflower



SEP Chrysanthemum



OCT Viola



NOV Daisy



DEC Amaryllis

SPECIFICATIONS

- Size:** 9 1/2" x 6 5/8"
- Quantity of Sheets:** 13 sheets total
- Binding Type:** Wire-O Bound
- Imprint Area:** 8 1/2" x 3/4"
- Change of Copy:** \$30.00 (G) each
- Each Add'l Color:** Set-up \$45.00 (G)  
Run \$0.35 (G) each
- Minimum Order Qty:** 200 qty.
- Shipping Weight (Bulk):** 28 lbs. (50 qty / box)
- Less than Minimum:** 100 qty. \$35(G) each



Black Heavy Board Stand w/ Black Wire



**STANDARD  
BLACK  
IMPRINT**

INCLUDED

**FULL COLOR  
IMPRINT**

SET-UP: \$50 (G)  
RUN: \$0.75 (G) EACH

Burgundy Heavy Board Stand w/ Gold Wire



BURGUNDY BOARD W/ GOLD WIRE: \$0.30 (G) EACH

**STANDARD  
BLACK  
IMPRINT**

INCLUDED

**FULL COLOR  
IMPRINT**

SET-UP: \$50 (G)  
RUN: \$0.75 (G) EACH



JAN Charles Bridge, Prague



FEB Ghent, Flanders, Belgium



MAR Village of Oia, Santorini, Greece



APR Hwaseong Fortress, Suwon, South Korea



MAY Stari Most, Mostar, Bosnia and Herzegovina



JUN Dom Luís I Bridge, Porto, Portugal



JUL Fort Lovrijenac, Dubrovnik, Croatia



AUG Hallstatt, Austria



SEP Selfoss Waterfall, Vatnajökull NP, Iceland



OCT Phra Mahathat Chedi Si Wiang Chai, Thailand



NOV Sharjah Mosque, Emirate of Sharjah, United Arab Emirates



DEC Seiser Alm, Dolomites, Italy



**SPECIFICATIONS**

- Size:** 9 1/2" x 6 5/8"
- Quantity of Sheets:** 13 sheets total
- Binding Type:** Wire-O Bound
- Imprint Area:** 8 1/2" x 3 3/4"
- Change of Copy:** \$30.00 (G) each
- Each Add'l Color:** Set-up \$45.00 (G)  
Run \$0.35 (G) each
- Minimum Order Qty:** 200 qty.
- Shipping Weight (Bulk):** 28 lbs. (50 qty / box)
- Less than Minimum:** 100 qty. \$35(G) each

**Black Heavy Board Stand w/ Black Wire**



**Burgundy Heavy Board Stand w/ Gold Wire**



**BURGUNDY BOARD W/ GOLD WIRE \$0.30 (G) EACH**

**STANDARD  
BLACK  
IMPRINT**

INCLUDED

**FULL COLOR  
IMPRINT**

SET-UP: \$50 (G)  
RUN: \$0.75 (G) EACH

**STANDARD  
BLACK  
IMPRINT**

INCLUDED

**FULL COLOR  
IMPRINT**

SET-UP: \$50 (G)  
RUN: \$0.75 (G) EACH



**JAN** Lake Helene, Rocky Mountain NP, CO



**FEB** Bisti Badlands, NM



**MAR** St. Charles Avenue, New Orleans, LA



**APR** Nashville, TN



**MAY** Sylvan Lake, Custer State Park, SD



**JUN** Saguaro NP, Sonoran Desert, Tucson, AZ



**JUL** Statue of Liberty, Liberty Island, New York, NY



**AUG** South Pointe Park, Miami Beach, FL



**SEP** John A. Roebling Suspension Bridge, Cincinnati, OH



**OCT** Piedmont Park, Atlanta, GA



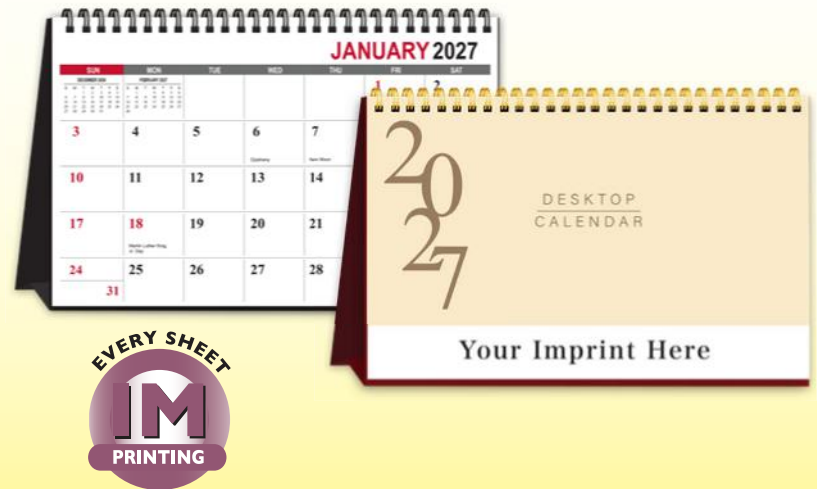
**NOV** St. Paul, MN



**DEC** Bodie Island Lighthouse, NC

SPECIFICATIONS

- Size:** 9 1/2" x 6 5/8"
- Quantity of Sheets:** 13 sheets total
- Binding Type:** Wire-O Bound
- Imprint Area:** 8 1/2" x 3/4"
- Change of Copy:** \$30.00 (G) each
- Each Add'l Color:** Set-up \$45.00 (G)  
Run \$0.35 (G) each
- Minimum Order Qty:** 200 qty.
- Shipping Weight (Bulk):** 28 lbs. (50 qty / box)
- Less than Minimum:** 100 qty. \$35(G) each



Black Heavy Board Stand w/ Black Wire



**STANDARD  
BLACK  
IMPRINT**

INCLUDED

**FULL COLOR  
IMPRINT**

SET-UP: \$50 (G)  
RUN: \$0.75 (G) EACH

Burgundy Heavy Board Stand w/ Gold Wire



BURGUNDY BOARD W/ GOLD WIRE \$0.30 (G) EACH

**STANDARD  
BLACK  
IMPRINT**

INCLUDED

**FULL COLOR  
IMPRINT**

SET-UP: \$50 (G)  
RUN: \$0.75 (G) EACH



JAN



FEB



MAR



APR



MAY



JUN



JUL



AUG



SEP



OCT



NOV



DEC



SPECIFICATIONS

- Size:** 9 1/2" x 6 5/8"
- Quantity of Sheets:** 13 sheets total
- Binding Type:** Wire-O Bound
- Imprint Area:** 8 1/2" x 3 3/4"
- Change of Copy:** \$30.00 (G) each
- Each Add'l Color:** Set-up \$45.00 (G)  
Run \$0.35 (G) each
- Minimum Order Qty:** 200 qty.
- Shipping Weight (Bulk):** 28 lbs. (50 qty / box)
- Less than Minimum:** 100 qty. \$35(G) each

Black Heavy Board Stand w/ Black Wire



Burgundy Heavy Board Stand w/ Gold Wire



BURGUNDY BOARD W/ GOLD WIRE \$0.30 (G) EACH

**STANDARD  
BLACK  
IMPRINT**  
INCLUDED

**FULL COLOR  
IMPRINT**  
SET-UP: \$50 (G)  
RUN: \$0.75 (G) EACH

**STANDARD  
BLACK  
IMPRINT**  
INCLUDED

**FULL COLOR  
IMPRINT**  
SET-UP: \$50 (G)  
RUN: \$0.75 (G) EACH



JAN Beagle



FEB Toy Poodle



MAR Cavalier King Charles Spaniel



APR Bloodhound



MAY French Bulldog



JUN Chihuahua



JUL Samoyed



AUG Shih Tzu



SEP Border Collie



OCT Boston Terrier



NOV Golden Retriever



DEC Jack Russell Terrier

**ORDERING INFORMATION****1. Complete Order**

For an order to be considered 'Complete' and 'Factory-ready,' we must receive the following information.

- Purchase order number
- Contact phone number, email address, physical address, etc.
- Item number, Quantity, Description
- Imprint color
- Shipping method and ship date
- Artwork and any other special instructions
- No phone orders. Please email or mail your purchase order(s).

**2. Early Orders**

Orders received through JUNE 30, 2026 will qualify for the early order pricing.

**3. Late Orders**

For all orders submitted after OCTOBER 31, 2026, please specify 2nd and 3rd choice of item or call Customer Service for stock availability.

**4. Incomplete Orders**

Incomplete orders are on hold until JULY 15, 2026. If not completed by JULY 15, 2026, the 'AFTER 6/30' pricing will apply.

**5. Less than Minimum**

Minimum order quantity is shown in the pricing table. Absolute minimum quantity is 100 qty. For the less than minimum quantity order, apply first quantity price from the pricing table plus \$35.00 (G) less than minimum charge.

**6. Order Acknowledgment**

An order acknowledgment will be sent by email within one week after receipt of order. We cannot be responsible for orders that are not received. Please check the acknowledgment for accuracy and notify us immediately if there is any discrepancy. Invoice will be sent when the order is complete.

**7. Changes on Order**

All changes on your orders must be notified to us in written form by email or mail. Any change(s) received after the order is completed will not be applied.

**8. Cancellations**

All cancellation requests must be submitted in written form by email or mail. No cancellation is valid until we issue the cancellation approval. A cancellation charge of \$50.00 (G) (plus all costs incurred before the cancellation request is received) will incur.

**SHIPPING****1. Shipping and Handling**

All shipments will be sent via ground service unless indicated otherwise. Freight charges at published rates, and shipping and handling charge of \$1.50 (G) per box, are added to the invoice.

**2. Drop Shipment Charge**

Add \$12.50 (G) each drop for orders within continental U.S.

**3. Postal Service:** N/A**4. Carrier Delays**

We cannot be responsible for any carrier delays.

**5. C.O.D. Shipment:** N/A**6. Shipment Dates**

Unless an order is marked that we should not ship before a certain date, we reserve the right to ship upon completion of production. If it is necessary to remove an order from storage prior to the date indicated on your P.O., make a change to the ship to address or ship via, a \$50.00 (G) charge will be applied.

**7. Release and Shipping Date**

Please specify one of these storage release / shipping dates.

- May 1
- June 1
- July 1
- August 1
- September 1, 15
- October 1, 15
- November 1, 15
- December 1, 15

**AD COPY****1. Exact repeat orders**

Orders with same as previous year should reference previous purchase order number or invoice number. Copy of previous ad layout may be provided as well for reference. If copy of previous ad layout is provided without indication of same as previous year, it will be automatically considered as 'new.'

**2. Print-Ready Artwork**

All print-ready artwork should be generated in a graphic application with all the text fonts converted to 'Curve' or 'Outline.' In addition, all the graphic should be in 'Black and White Lineart format' for the Appointment Line B-Style and any foil stamping imprint. We accept artwork files in AI, CDR, EPS, or PDF format.

**3. Photo or Halftone:** \$25.00 (G) each**4. Proofs**

- PDF via Email - \$12.50 (G)
- Paper Proof Via US Mail - \$12.50 (G)
- Digital Color Proof - \$20.00 (G)
- One-Color Press Proof - \$60.00 (G)
- Two-Color Press Proof - \$100.00 (G)

**IMPRINT COLORS****1. Standard Imprint Colors**

Following standard imprint colors are available for #100 Executive Line, #200 Value Line, #300 Appointment Line, #500 Triple-View Line, #700 Desktop Line (A-Style), #750 Desktop Line, and #900 Large Desktop Line.

 Reflex Blue

 Green (PMS 347)

 Red (PMS 185)

- Set-up charge \$45.00 (G)
- Color wash-up charge \$20.00 (G)
- Running charge - check description on each line

**2. Special Imprint Colors - PMS color number required.**

- PMS matching charge \$75.00 (G)
- PMS wash-up charge \$35.00 (G)

**PRODUCT / COLOR VARIANCE**

Due to the nature of the materials and the variance in manufactured products, we cannot guarantee exact match within orders or on repeat orders. We reserve the right to change the price, paper stock, size and format of calendars without notice. All sizes in this catalog have been rounded to the nearest 1/8 of an inch.

