

[System Alert]

Sophia arrived at school at
08:00 on Jan 15.

 [View Photo](#)



Home-School Connection Safeguards Students

School Arrival & Departure Notification Solution

HIKVISION[®]



Bridging home and school, Hikvision's automated solution ensures parents stay informed of their child's safety. Integrating advanced face recognition with **WhatsApp**, it provides instant peace of mind while streamlining campus attendance management.

Pain **Points:**

- 01 Safety Concerns** – No real-time tracking for worried parents.
- 02 Low Efficiency** – Manual checks are slow and error-prone.
- 03 Limited Traceability** – No digital records for quick verification.

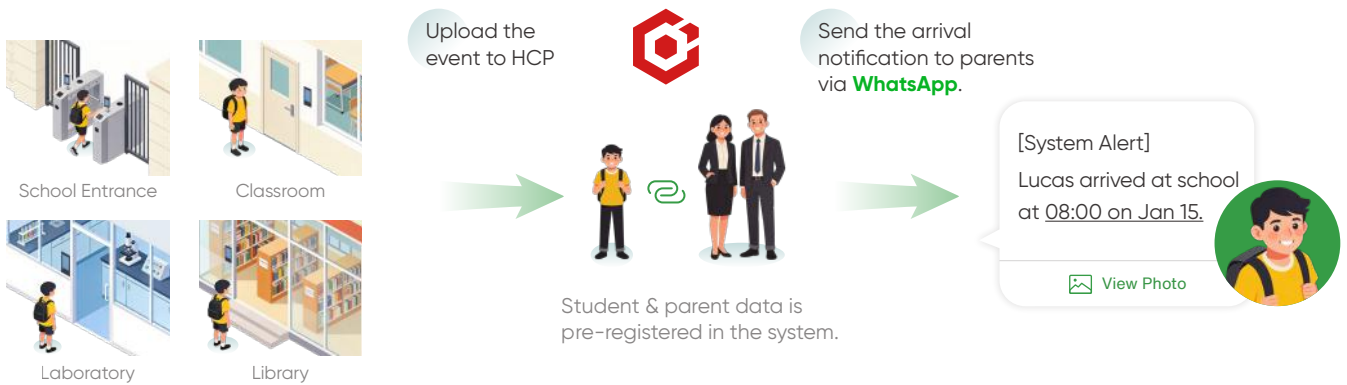
What We Offer:

A sharp focus on home–school connection

Parents receive instant notifications via WhatsApp, complete with on-site snapshots, for every student arrival and departure. This gives parents clear, real-time visibility into their child's status, effectively safeguarding their journey to and from school.

01 Safe arrival notification

Upon the student's first daily check-in at any campus attendance device, the system automatically sends a notification to the parent. Parents can simply tap the button in **WhatsApp** to view the real-time check-in photo for visual verification.



02 Safe departure notification

When a student completes the check-out process at designated departure points, the system instantly triggers a departure notification to the parent's **WhatsApp** account, ensuring an end-to-end confirmation.



A unified, end-to-end attendance solution

Data from all access points—including school gates, academic buildings, classrooms, and dormitories—is managed on a unified platform. Upon verification at any terminal, the system logs attendance, ensuring accurate and traceable campus management.

Recommended Products



Swing Barriers for Schools



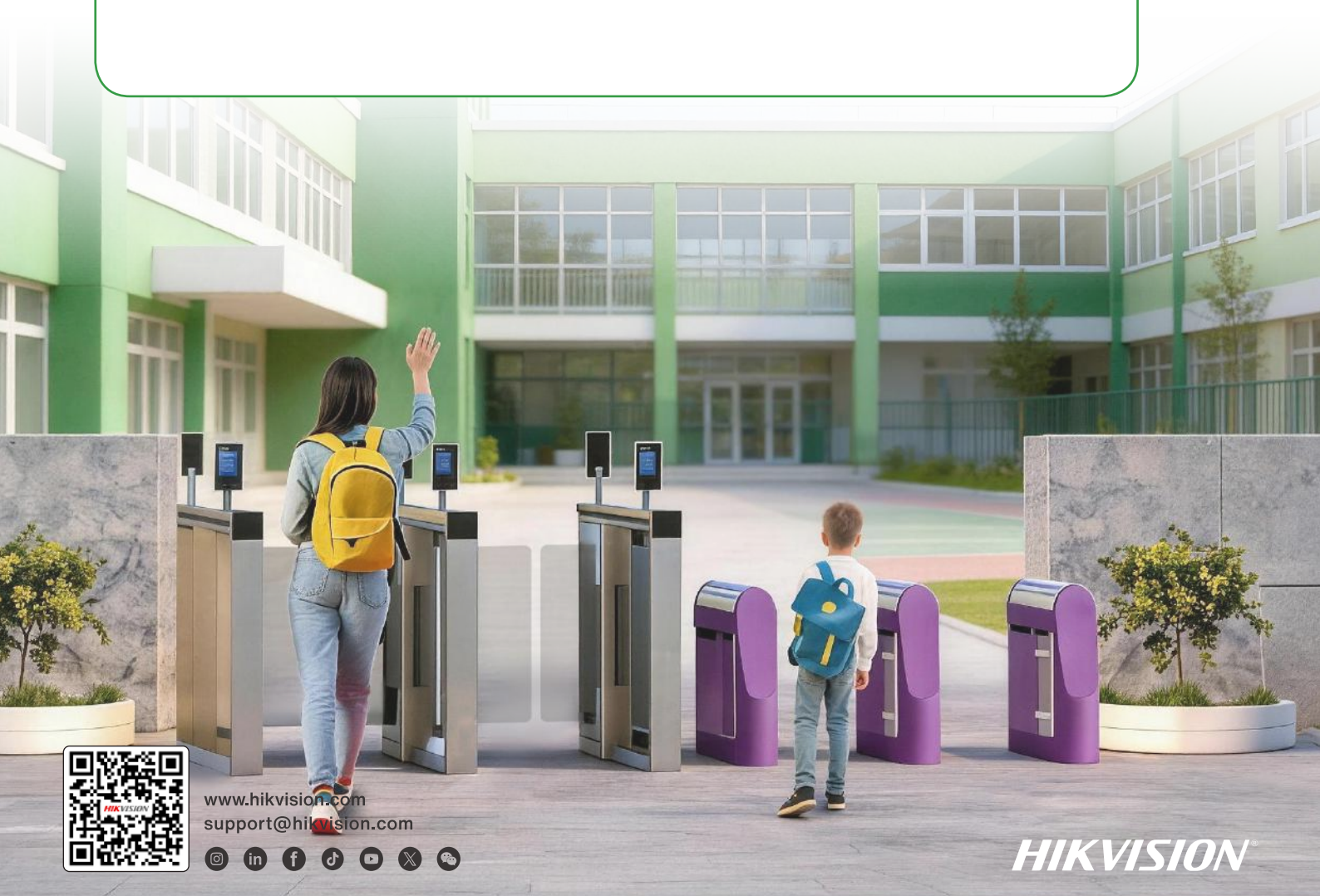
Face Access Terminal



Swing Barriers for Kindergartens



*Functions supported by customized HCP v3.0.1.



www.hikvision.com
support@hikvision.com

