

THE WHIP
TAIL



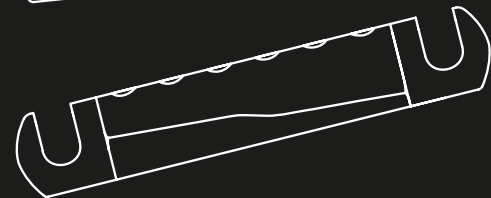
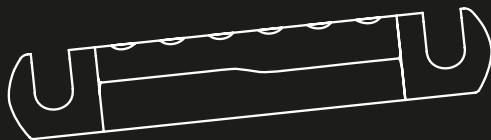
II



CLASSIC



50

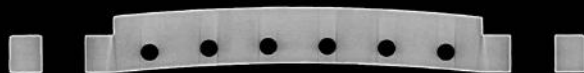


Compensated
Wraparound Bridges

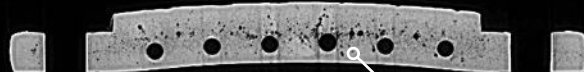
**Custom intonation.
Bigger tone.**



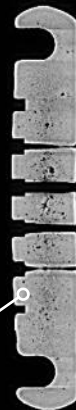
KISS MY STRINGS



Whiptail

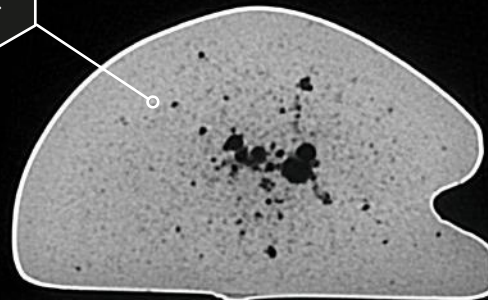


Original 50s



CT scan of a vintage 50s wraparound.

Die-cast bulk production with voids and impurities.



Each Whiptail weighs just **30 g** – perfectly matching the average weight of **vintage stoptails and wraparounds (28 g-32 g)**.

In contrast, the Whiptail...

Strength and Durability

Whiptails are crafted from aircraft-grade 7075 aluminum, ensuring exceptional strength and long-lasting performance.

Reproducibility

Precision CNC manufacturing guarantees consistent, high quality and perfect reproducibility.

Quality

Whiptails are entirely free from air pockets and casting impurities, resulting in superior tonal performance and reliability.



For **video footage**, please scan the QR code or visit www.youtube.com/@KMS-KissMyStringsOfficial

Whiptail™

Compensated Wraparound Bridges
for improved **intonation** and **tone**

Whiptail™ Classic

for standard-angle mounts

Art.-Nr. 5001-N (*Nickel*)

Art.-Nr. 5001-NA (*Nickel Aged*)

Whiptail™ //

for straight (pickup-parallel)
mounts

Art.-Nr. 5002-N (*Nickel*)

Art.-Nr. 5002-NA (*Nickel Aged*)

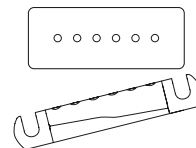
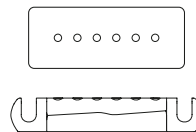
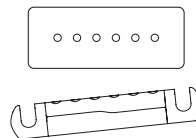
Whiptail™ 50

for steep-angle mounts,
common on vintage guitars

Art.-Nr. 5050-N (*Nickel*)

Art.-Nr. 5050-NA (*Nickel Aged*)

Supplied with **Allen key** and **extra intonation screw**.



MATERIAL

— AL 7075 —

All Whiptails are precision-milled from high-quality 7075 aluminum ingots and plated with authentic electrolytic nickel.

3 TYPES



Choose from 3 Whiptail types to achieve custom intonation that's precisely matched to your guitar's bridge mounting.

SPECS



Spacing: 3¼" (82.55 mm)

Fits common

5/16-24 and M8 studs.

Radius: 12"

Intonation screws: 6-32 UNC

PANUCCI '59 / Oxblood over Goldtop
with Whiptail Classic

Photo by Ten-Guitars / Edited by KMS

Whiptail™ Classic

for standard-angle mounts

Beyond **intonation accuracy**,
Whiptails add **clarity, harmonic
richness**, and **depth** to your tone.

Standard finish
(in stock)



aged or
non-aged

Optional coatings & treatments
(typical lead time 2-4 weeks)

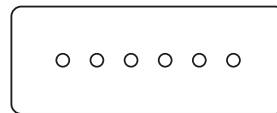


aged or
non-aged



DLC (black)
• ultra-hard
• wear-resistant

Available with authentic **electrolytic nickel plating** in **aged** or **non-aged** finish.
24K gold plating (aged or non-aged), **black DLC coating**, and **cryogenic treatment** - made to order.



GRETSCH Jet 5210 Custom
with Whiptail II

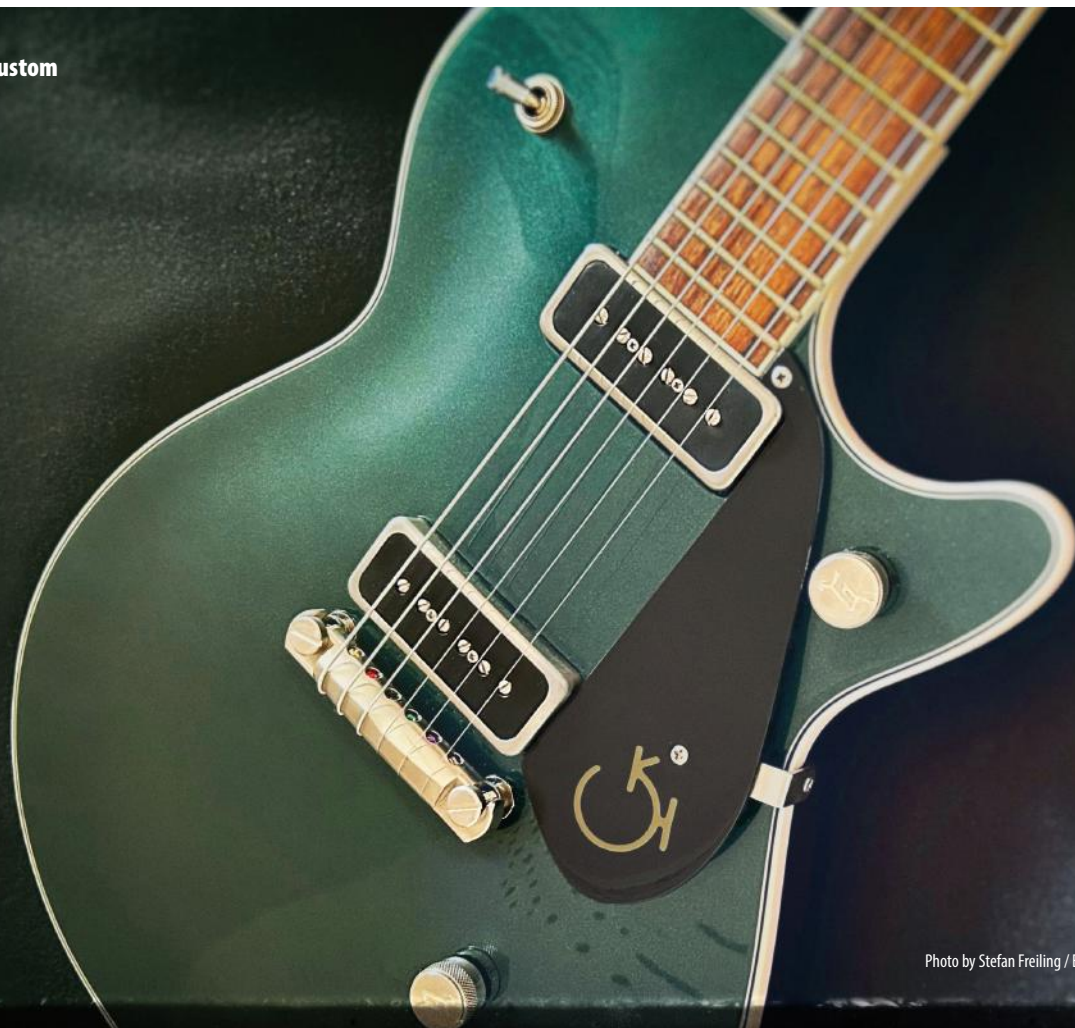


Photo by Stefan Freiling / Edited by KMS

Whiptail™ II

for straight (pickup-parallel) mounts

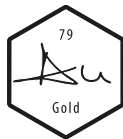
Vintage and die-cast copies risk voids and inconsistency; Whiptails deliver **modern strength**, **100% reproducibility**, and precision from **aircraft-grade aluminum** and **CNC machining**.

Standard finish
(in stock)



aged or
non-aged

Optional coatings & treatments
(typical lead time 2-4 weeks)

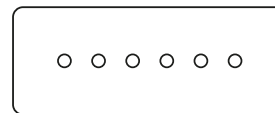


aged or
non-aged



DLC (black)
• ultra-hard
• wear-resistant

Available with authentic **electrolytic nickel plating** in **aged** or **non-aged** finish.
24K gold plating (aged or non-aged), **black DLC coating**, and **cryogenic treatment** - made to order.



GIORDANO Tributo Jr / TV yellow
with Whiptail 50



Photo by Nicholas Giordano / Edited by KMS

Whiptail 50

for steep-angle mounts

Aged overnight - deep-cooled to relieve residual machining stress for a more settled, **vintage-like response and tone.**

(optional, available for all Whiptails)

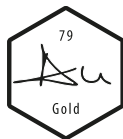


Standard finish
(in stock)



aged or
non-aged

Optional coatings & treatments
(typical lead time 2-4 weeks)



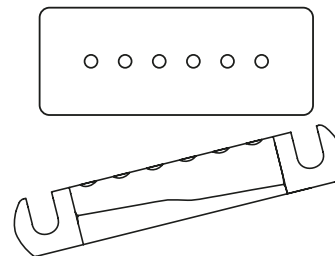
aged or
non-aged



DLC (black)
• ultra-hard
• wear-resistant

Available with authentic **electrolytic nickel plating** in **aged** or **non-aged** finish.

24K gold plating (aged or non-aged), **black DLC coating**, and **cryogenic treatment** - made to order.





Whiptail 50 | aged



KMS Vintage Studs | heavy aged

2103

821

Accessories

Vintage Studs & Anchors



Vintage Studs

Length: 1-7/16" or 1-1/2"

5/16"
24

M8

Vintage Anchors

Length: 1"

5/16"
24



Also
available in
Brass
Aluminum
& other
materials

Finish options (Studs)



DLC (optional)
- ultra-hard
- wear-resistant

All **Vintage Studs** are available with authentic **electrolytic nickel plating**, **24K gold plating**, or optional black **DLC coating**. **Nickel** and **gold finishes** can also be ordered in **aged** or **heavy-aged versions**.

Vintage Studs

— **Steel** —

Short Version

1-7/16"

(thread length ~7/8" ≈ 22 mm)

Long Version

1-1/2"

(thread length ~1" ≈ 25 mm)

Also available made of

Brass

Aluminum

& various other materials

Threads: 5/16-24 and M8

Vintage Anchors

— **Steel** —

1" steel, raw (vintage length -
fits 1-7/16" and 1-1/2" studs)

Thread: 5/16-24



Whiptail

Wraparound Bridges



<https://www.kissmystrings.de/whiptail>

