



Dear friends and community partners,

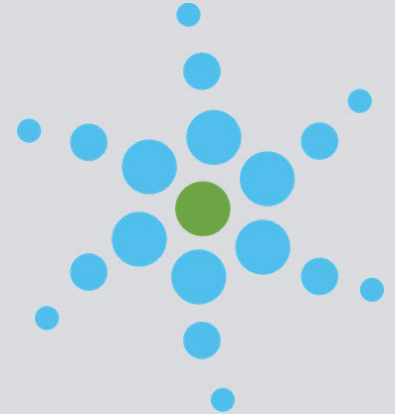
This month's newsletter is filled with exciting updates including new grant opportunities, a new fund, a look ahead to the Women in Philanthropy Luncheon, and a recap of our recent Summit. Behind each of these highlights, however, is an even bigger story unfolding across our community. More and more people are becoming inspired to give and to make a lasting impact here at home.

We are seeing individuals, families, and organizations begin funds and engage in meaningful conversations about how to invest in ways that ensure their mission and legacy continue for generations. This growing spirit of generosity is energizing and hopeful. It reminds us that philanthropy in Madison County is not just about today. It is about building a strong and lasting future.

That same energy is present within our Foundation. Our board and staff remain deeply committed to our mission, vision, and values and to the goals outlined in our strategic plan. Through Madison Forever, we are seeing that plan come to life as we work together to strengthen our community and expand opportunities for impact.

Thank you for being part of this shared momentum and for helping shape a future filled with possibility for Madison County.

Ben Davis, President



## IN THIS ISSUE

**Campaign Spotlight**

**Impact Story of the Month:  
Firefly Children & Family Alliance**

**Fund Spotlight: The Best Class Ever**

**New Funds and Notable Donations**

**Summit Recap**

**Women in Philanthropy**

**.. and more!**

# February Campaign Spotlight

## Multiple Madison Reflects Our Values

Our values are more than words. They are our way of being. Multiply Madison brings them to life, turning generosity into a legacy that lasts.

### Integrity

We honor the trust of our donors by stewarding every gift with transparency. Each endowed fund is built and managed responsibly to ensure long-term impact and accountability.

### Community

Multiply Madison strengthens the ties that bind us. When we give together, we grow together as we respond to local needs, build relationships, and ensure Madison County thrives as one community.

### Impact

Through the 2:1 match, every gift multiplies into greater possibility. Your generosity fuels projects and programs that transform lives today and sustain opportunity tomorrow.

### Inclusion

Multiply Madison is for everyone. Gifts of every size and from every corner of our county come together to create meaningful and lasting change. When everyone participates, everyone benefits.

### Legacy

Endowed funds ensure that generosity never ends. Every dollar given today becomes a permanent resource, shaping Madison County, for good, forever.



### The Steady Work of the Hive

Bees build with precision and purpose, every cell crafted to hold and protect what matters. Multiply Madison reflects that same integrity.

### Honey for Generations

Bees store honey not just for today, but for the seasons ahead. Multiply Madison builds that same kind of legacy: endowed funds that preserve generosity and ensure that what we create today continues to nourish Madison County forever.



**INVESTING IN LASTING POSITIVE CHANGE**



# Fund Spotlight

## Leadership Academy of Madison County

Each year, the class of Leadership Academy of Madison County chooses a project to make a meaningful impact. This year, the Class of 2026 asked a deeper question

“I wonder if we can have an impact beyond us.”

During a brainstorming session, ideas filled the room supporting youth, empowering women, addressing food insecurity, mentoring, and serving those experiencing homelessness. Then someone suggested creating an endowment. At first, not everyone understood what that meant. But as they learned more, the vision became clear.

Founded in 1981, Leadership Academy of Madison County develops servant leaders who strengthen our community through education, mentorship, and service. Through both adult and youth programs, participants grow as leaders and invest in the future of Madison County. The Class of 2026 decided their legacy would permanently support that mission.




With guidance from Executive Director Zina Teague and support from Madison County Community Foundation, the class established an endowment that will provide lasting resources for leadership programming, scholarships, and expanded access for future participants. In many ways, this one fund reflects all the ideas they first imagined because strong leadership influences every corner of a community.

The class has set a goal to raise ten thousand dollars by the end of March, which will be amplified through matching funds. They are reaching out through personal networks, social media, and local dine to donate events.

One student recently shared, “This was the absolute best experience I have been part of. It opened doors and created connections I never expected. If you have not gone through this program, I highly recommend it. It is life changing. For our class project we are raising funds for future LAMC classes. Will you help us get to our goal?”

By creating this endowment, the Class of 2026 is ensuring that Leadership Academy of Madison County can continue developing servant leaders for generations to come.



 [Donate to  
The Best Class Ever](#)

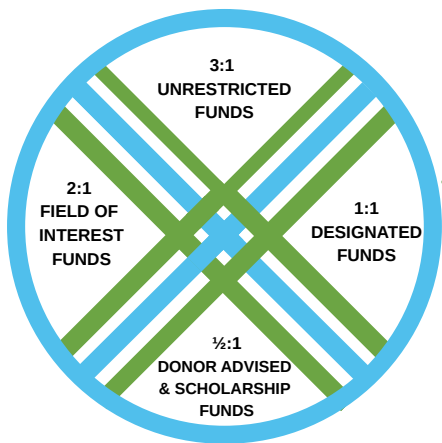
**WE HELP DONORS CREATE ENDURING LEGACIES THAT REFLECT THEIR VALUES AND BENEFIT FUTURE GENERATIONS.**

# NEW

## February 2026

### NEW FUNDS THIS MONTH Best Class Ever - Leadership Academy of Madison County Endowment Fund

Founded in 1981, the Leadership Academy of Madison County (LAMC) develops servant leaders who are committed to strengthening our community through education, mentorship, and service. Through both adult and youth programming, LAMC prepares participants to grow as leaders and invest in the future of Madison County. The Class of 2026 created this endowment as its class legacy project to provide permanent support for the Academy's mission. Earnings from the fund help sustain leadership programming, provide scholarships, and expand access for future participants. Through this endowment, the Class of 2026 is helping ensure that LAMC can continue developing community leaders for generations to come.



*Thank You*  
for your  
generosity

You can set up a payment plan to contribute an amount of your choice to any of the funds held at the Foundation or to start a named fund of your own.

Contact [spatton@madisonccf.org](mailto:spatton@madisonccf.org) for more information



MCCF Funds

### Notable Donations in February

**Total**  
**\$40,630**

**\$14,500**

given to

Women's Endowment Fund

**\$12,500**

given to Laine Ricker-Patterson  
Family Fund

**\$6750**

given to Women in Philanthropy  
Unrestricted Fund

**\$5995**

given to Operating Fund

**\$550**

given to various  
unrestricted funds

**\$335**

given to various  
donor advised and designated  
funds





FEB 2026

# IMPACT STORY

FIREFLY CHILDREN & FAMILY ALLIANCE



## Your generosity is helping families find their way back to one another.

Across Madison County, parents working to overcome substance use while navigating the child welfare system face an uphill journey. Court requirements, treatment plans, and the day-to-day realities of rebuilding stability can feel overwhelming. Yet with the right support and a community willing to walk alongside them, real change becomes possible.

In 2024, the Madison County Community Foundation awarded four \$25,000 SPARK Grants to help launch and strengthen promising initiatives across the county. One of those grants supported Firefly Children & Family Alliance and its work to pilot Family Recovery Court in Madison County.

Family Recovery Court brings together judges, case managers, treatment providers, CASA teams, and community partners to support parents working toward recovery and reunification with their children. Instead of navigating services alone, participants are surrounded by a coordinated team focused on healing, accountability, and long-term stability.

**Thanks to a \$25,000 SPARK Grant from the Madison County Community Foundation, Firefly's Family Recovery Court moved from vision to action.**

During the grant period, 38 families received comprehensive wrap-around services tailored to their needs, including therapy, intensive outpatient treatment, recovery coaching, parenting classes, peer mentoring, and supervised visitation. Families also had access to a resource pantry stocked with essential items such as hygiene products, children's clothing, diapers, bedding, and household goods, small supports that made a meaningful difference as parents worked to rebuild stable homes.



# FIREFLY



Children & Family Alliance



[Read More](#)

# Spring Grant Opportunity



In response to feedback from our nonprofit partners, Madison County Community Foundation is introducing an Early Impact Grant cycle this spring.

With the launch of Elevate Madison, we've heard that the revised Impact Madison timeline may create challenges for organizations needing funding earlier in the year. The traditional cycle was intentionally moved later to ensure agencies not receiving Elevate Madison funding would still have an opportunity to apply.

This additional spring cycle is designed to provide more timely support for organizations whose programming or fiscal year timelines require earlier funding.

## Application Timeline

- Application Window: March 2 – March 31
- Review Period: April 6 – April 24
- Grant Offers Announced: April 30

## Who Should Apply

- Agencies not applying for Elevate Madison
- Agencies whose fiscal year or programming timeline does not align with the Impact Madison cycle

## Grant Details

- Maximum request of \$5,000
- Existing programming
- Expansion of an existing program or project
- Capital improvement
- Capacity building

## Not eligible:

- New programming
- New projects

*\*Application opens March 2*



Elevate Madison is designed to support current needs while building long-term opportunity and resilience. Over a three year period, we are investing \$1,000,000 highlighting three of the most fundamental Social Determinants of Health

Letter of Intent form  
available on March 2



[Learn about Elevate Madison grants](#)

## EVERYONE'S ECONOMY Economic Stability



Supporting pathways to financial security so individuals, families, and communities can thrive.

## LIFELONG LEARNING Education Access & Quality



Expanding access to quality learning opportunities at every stage of life.

## HEALTHY MIND AND BODY Neighborhood & Built Environment



Creating environments that support physical health, mental well-being, and connected communities.

# Imagine the Future: Bring Your Charitable Goals to Life

Charitable giving is deeply personal, and most donors take great care to put a plan in place that reflects their values. Over time, though, circumstances change—families evolve, priorities shift, and the world around us looks different than it once did. This month’s insights are designed to help you pause, reflect, and feel confident that your charitable intentions remain clear, flexible, and well supported as you work side-by-side with the community foundation team.

## A few things to consider:

- **Your charitable intentions deserve an occasional check-in.**

Once a charitable plan is established, it can be easy to assume everything will unfold exactly as intended. A simple annual review with the community foundation team can help ensure that your wishes are clearly documented, your fund arrangements remain accurate, and your giving continues to reflect what matters most to you and your family.

- **Continuing generosity during uncertain times.**

Periods of uncertainty naturally prompt reflection about finances and priorities, including charitable giving. The community foundation team is here to help you set the pace, structure, or focus of your giving—without losing sight of your goals and purpose. We’ll help ensure that your giving is meaningful and sustainable, even when external circumstances feel unsettled.

- **Choosing the right charitable tools for your goals.**

The causes you care about are only part of the picture when you work with the community foundation; the type of fund you choose also shapes how your giving works over time. From donor-advised and designated funds to unrestricted and field-of-interest funds, the community foundation has something for everyone. Learn how our team adopts a “portfolio” approach to ensure that your philanthropy grows and adapts alongside your life.

As always, the community foundation is here to support you. Whether you are reviewing an existing plan, navigating uncertainty, or exploring new ways to give, our team is honored to serve as a resource and partner. Please reach out anytime—we would love to talk with you and help you feel confident about the next chapter of your giving.

**Generosity is powerful force  
for stability and hope.**



Uncertainty does not have to pause generosity. In fact, consistent giving can be one of the most grounding investments you make. Take time to revisit your goals and consider how your charitable plans can continue to create impact. MCCF is here to provide guidance, insight, and partnership every step of the way.



MADISON COUNTY  
COMMUNITY FOUNDATION

# 2026 Nonprofit Summit Recap



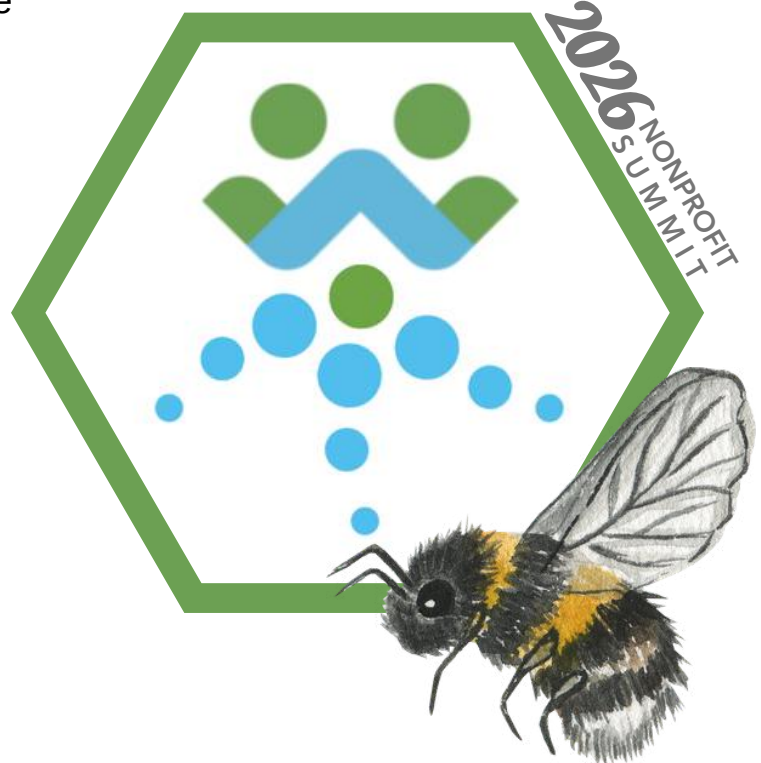
The recent Nonprofit Summit gathered executive directors, staff, board members, and volunteers from across the county for a day of learning, connection, and collaboration. Sessions focused on practical topics like marketing, fundraising, and grant writing, equipping organizations with tools to grow stronger and serve more effectively.



Participants described the experience as inspiring, well organized, and a valuable opportunity to connect with peers who understand both the challenges and the hope of nonprofit work.



MADISON COUNTY



**WHEN LEADERS INVEST, OUR ENTIRE COMMUNITY BENEFITS.**

# Annual Luncheon

## Women in Philanthropy

### Hope of the Hive

THURSDAY, APRIL 16 2026 / 11:30 AM  
ANDERSON FIRST CHURCH OF THE NAZARENE  
COMMUNITY CENTER  
2301 MERIDIAN STREET, ANDERSON

Grant finalists will present projects that benefit women and children in Madison County. Registration includes lunch, a gift toward immediate grantmaking, and one vote. Grant recipient(s) will be announced at the luncheon.

*Must be present to vote.*

Registration  
information  
coming soon

*Save the Date*

## SPONSORSHIP OPPORTUNITIES

Sponsorships and partnerships directly support grants for programs benefiting women and children in Madison County. Every dollar raised at the luncheon is granted the same day and amplified through a 2:1 match, multiplying the impact of your support.

### Sponsor Information

This year's luncheon will offer a first look at The Legacy Collective—a renewed vision for Women in Philanthropy that connects the joy of giving today with lasting impact for tomorrow.



[www.madisonccf.org](http://www.madisonccf.org)

