

AVON

CAMPAIGN 21



LET THE HOLIDAYS IN!

special offer inside

get carried away

THIS HOLIDAY

It's the most wonderful time of the year! The holidays are in the bag with special limited-edition gifts that are all ready to give!



NEW! LIMITED EDITION

ONLY \$14.99

Ready to Go Mini Crossbody Bag
with any \$20 holiday beauty
purchase, pages 4-19.

◆ **Ready to Go
Mini Crossbody Bag**

Taupe crossbody bag with zipper closure, one inner pocket with three credit card slots and one outer slip pocket. Goldtone hardware. Adjustable and removable strap. Polyurethane with polyester lining. 6³/₄" L x 4" W x 1⁵/₈" D. Handle drop (fully extended): 58" L. Imported. **145-492**
\$40 if purchased separately.

THIS BROCHURE ONLY.
LIMITED QUANTITIES.

*Ready to Go Crossbody Bag purchase does not qualify toward this or any other offer.



NEW! LIMITED EDITION

holiday open house

7 Days of Avon Beauty

Celebrate the season with seven makeup and skin care must-haves! Each door opens to a beautiful surprise! Paperboard, 7 $\frac{1}{8}$ " W x 2" D x 12 $\frac{7}{8}$ " H.

163-069 reg. \$66

\$29.99

7-piece set

Includes:

- Isa Knox LXNEW Ultimate Rejuvenating Serum Mini, .23 fl. oz.
- Isa Knox LXNEW Ultimate Rejuvenating Day Cream Mini, .5 fl. oz.
- fmg LOVE at 1st Lash Mini Mascara in Blackest Black, .13 fl. oz.
- fmg Glimmer Lip Plumper, .3 fl. oz.
- Farm Rx Super Greens Refreshing Gel Cleanser Mini, 1 fl. oz.
- fmg Glimmer Diamonds Eyeliner in Black Ice, .01 oz. net wt.
- fmg Glimmer Lip Glaze in Flash, .3 fl. oz.







mistletoe READY



fmg Glimmer Wish for a Kiss
30 of our best-selling
fmg Glimmer Satin Lipstick
shades in take-to-every-party
sample sizes housed in a cute
keepsake tin. Comes in gift box.
Metal. Each, .021 oz. net wt.

Includes shades:
Luna, Wild Rose, Rose Angel,
Sierra Sunset, Poppy, Violet Night,
Hibiscus, Firebolt, Thunderbird,
Fog, Eclipse, Aster, Wild Cherry,
Tulip, Constellation,
Morning Glory, Plum Blossom,
Desert Moon, Equinox and Twilight.

**164-031 reg. \$100
\$29.99**

31-piece set

NEW! LIMITED EDITION

fmgt Eye Moment Palette

Multi-finish eyeshadow palette to create your best holiday eyes!

Includes 10 sensational shades in satin, shimmer, glitter and matte finishes, mirror and brush applicator.

Each, .03 oz. net wt.

reg. \$35

\$22 each



Beginning
163-020



New Classic
162-794

NEW! LIMITED EDITION

**fmg Glimmer Pout Perfect
Mini Lipstick Gift Set**

Perfect your pout with a trio
of cult-fave fmg Glimmer Satin
mini lipsticks. Comes in gift box.
Each, .04 oz. net wt.

Includes shades:

- Luna
- Plum Blossom
- **Holiday Set Exclusive!**
French Rose

164-490 reg. \$36

\$29.99

3-piece set



nifty +



**fmg Mini Makeup
Essentials Kit**

Your must-have merry
makeup essentials all
ready to go for every
holiday event.

Includes:

- **Holiday Set Exclusive!**
fmg Glimmer Duo
Eyeshadow Compact,
.14 oz. total net wt.
 - fmg LOVE at 1st Lash
Mini Mascara in
Blackest Black, .13 fl. oz.
 - fmg Glimmer Mini
Satin Lipstick in
Wild Rose, .04 oz. net wt.
 - **Be Blushed Cheek Color**
in Blushing Nude,
.14 oz. net wt.
 - **Clear Green Pouch**
Zippered. 4³/₄" L x 4³/₄" H
x 4" D. PVC. Imported.
163-460 reg. \$55
\$40
- 5-piece set

**fmg Expert Tips
Nail Art Tool Kit**

Merry your mani and get nails in tip-top shape with this handy kit!

Includes:

- Foam nail buffer block, 7" L.
- Nail buffer, 7" L.
- Two nail files, each, 7" L.
- Cuticle pusher, 5" L, stainless steel.
- Dual-ended marbling and dotting tool, 4" L, metal alloy.
- Cuticle cutter, stainless steel.
- Nail clipper, 2½" L, stainless steel.
- Storage box, 7½" L x 3½" H, plastic.

006-970 reg. \$30

\$16

9-piece set



*After you prep,
add some nail color,
sold on page 84!*

gifts

**VDL Expert Slim
Glow Lip Balm
Special Edition Set**

Sparkle through the holidays and beyond with supersoft lips and hands!
Comes in gift box.

Includes:

- **VDL Expert Slim Glow Lip Balm** in Pink Sparkle, .08 oz. net wt.
- **VDL Lumilayer Perfumed Hand Cream** in rose and peony scent, 1.01 oz. net wt.

168-018 reg. \$28.99

\$19.99

2-piece set



Enjoy special prices and offers with an Avon account or Representative.

Men's Fragrance Essentials Gift Set
fresh aromatic
Elevate your fragrance experience
with our best-selling classics!
Comes in gift box.

Includes:

- **Wild Country Cologne:**
Lavender, coriander seed
and sandalwood. 3 fl. oz.
 - **Wild Country Aftershave Splash,**
4 fl. oz.
 - **Black Suede Eau de Toilette:**
Bergamot, soft leather and
oakmoss. 3.4 fl. oz.
- 217-195 reg. \$57
\$29.99
3-piece set



magnifi-SCENTS!



Haiku Serenity Gift Set

fresh green floral

Delight in the serenity of a beautiful Japanese garden, blooming with Japanese yuzu, delicate muguet and blonde woods. Comes in gift box.

Includes:

- Haiku Eau de Parfum, 1.7 fl. oz.
- Haiku Hair & Body Mist, 6.7 fl. oz.
- Haiku Intense Travel Spray, .3 fl. oz.

217-161 reg. \$57

\$29.99

3-piece set

Enjoy special prices and offers with an Avon account or Representative.

ho, ho, HYDRATION!



belif in wonder holiday set

Celebrate explosive hydration!
One full-size fave plus two minis.
Limited-edition kit includes:

- The True Cream Moisturizing Bomb, 1.68 fl. oz.
- Aqua Bomb Hydrating Body Moisturizer, 1.01 fl. oz.
- Moisturizing Eye Bomb, .16 fl. oz.

Comes in festive holiday gift box.

208-562 reg. \$42

\$38

3-piece set

**NEW!
LIMITED
EDITION**



belif glow on the go holiday travel kit

Five must-have mini sizes.

Limited-edition kit includes:

- The True Cream Moisturizing Bomb, .33 fl. oz.
- The True Cream Aqua Bomb, .33 fl. oz.
- Moisturizing Eye Bomb, .16 fl. oz.
- Aqua Bomb Hydrating Toner, .67 fl. oz.
- Aqua Bomb Jelly Cleanser, 1.01 fl. oz.

Comes in festive holiday gift box.

210-736 reg. \$30

\$23

5-piece kit

Enjoy special prices and offers with an Avon account or Representative.

holiday BESTIES

The Face Shop

x earp earp Herb Day 365 Foaming Cleanser Trio Trial Kit

Mini daily cleansers infused with naturally derived herbal and fruit extracts. Each, 2 fl. oz. Boxed set includes:

- **Lemon & Grapefruit**
Freshen oily skin.
- **Acerola & Blueberry**
See a clearer complexion.
- **Aloe & Green Tea**
Hydrate dry skin.

904-947 reg. \$11

\$8.40

3-piece kit



The Face Shop

x earp earp Best Sellers Set

Three skin care beauties, all in one cute kit. Boxed set includes:

- **The Therapy**
Vegan Blending Cream
Lower layer of emulsified cream with an upper layer of oil gel cream. .33 fl. oz.
- **Rice Water Bright**
Foaming Cleanser
Gently moisturizing foam with rice extract. 1.01 fl. oz.
- **Real Nature**
Rice Face Mask
Brightening and softening sheet mask with rice extract. .7 oz. net wt.

918-060 reg. \$10

\$8

3-piece kit





**The Face Shop x earp earp
Real Nature Mask Sheet Set**
With naturally derived ingredients.
10 single-use sheet masks.
Each, .7 oz. net wt. Boxed set includes:

- **Honey mask** Hydrates for an extra glow.
- **Aloe and Potato masks**
Hydrate and soothe.
- **Lemon and Rice masks** Brighten.
- **Avocado and Green Tea masks** Hydrate.
- **Red Ginseng, Blueberry and Pomegranate masks** Help firm.

900-717 reg. \$11
\$8.80
10 masks

NEW! LIMITED EDITION



Isa Knox LXNEW Ultimate Day and Night Gift Set
With peony extract, plus niacinamide and panthenol. See younger skin blossom. Includes full-size day and night cream. Comes in gift box.

Includes:
• **Rejuvenating Day Cream**, 1.7 fl. oz.
• **Rejuvenating Dual Night Cream** Volume Cream/Firming Cream. Each, .85 fl. oz.
213-716
reg. \$100
\$39.99
2-piece set

GIVE beautifully

Farm Rx Skin De-Stressing Gift Set
Visibly improve wrinkles. Plus, massage with the relaxing wand to help ease facial tension. Comes in gift box.

Includes:
• **Farm Rx Bakuchiol Serum**, 1 fl. oz.
• **Farm Rx Bakuchiol Cream**, 3.04 fl. oz.
• **Holiday Set Exclusive! Acupressure Wand**
Lightly massage T-shaped end of wand upward to enhance absorption of serum and cream.

213-807
reg. \$106
\$35
3-piece set



winter DELIGHTS

Avon Senses Strawberry White Hot Chocolate Winter Bath Collection

An indulgent treat for your winter body care routine. Soften your skin all over while you enjoy the fresh and fruity scent of luscious strawberries with the silky sweetness of decadent white chocolate.



Body Lotion

Smooths and softens with moisture-rich shea butter and vitamin E. 8 fl. oz.
150-320 reg. \$17
\$10.99

Bubble Bath

Sweet and refreshing, delicious bubbles. 16.2 fl. oz.
150-373 reg. \$11
\$7.99

Candle

1 wick. Soy-wax blend. 3" diam. 3 1/2" H. Burn time, 40 hours. 7 oz. net wt.
150-392 reg. \$18
\$12.99

Hair & Body Mist

With aloe vera extract, leaves hair and skin feeling refreshed. 8 fl. oz.
150-369 reg. \$18
\$10.99

NEW! LIMITED EDITION

YOUR GIFT is served



**Daily Moments
Vegan Hand Cream
Holiday Set**

Includes three
of your favorites.

• **Midnight Street**

A sensual fragrance infused
with luscious fruit notes.

• **Sunset Rooftop**

A cool fragrance infused
with a touch of sweetness.

• **Morning Florist**

A floral fragrance featuring
fresh rose blooms.

Each, 1.0 fl. oz.

Comes in gift box.

217-817 reg. \$9.99

\$6.99

3-piece set



**Mini-Size
Holiday Hand Cream**
Can't decide? Get them both!
Each, 1.7 fl. oz. **reg. \$3**
\$2.49

**Skin So Soft
Pear and Freesia**
217-200

**Moisture Therapy
Soothing and Hydrating**
Fragrance-free.
217-750



great
stocking
stuffers!

Bath Bomb Ornament
Hang 'em on your Christmas tree. Then run 'em under water in your tub and unwind with warm winter scents! Suitable for sensitive skin.
Each, 1.6 fl. oz. **reg. \$10**

\$8 each

Star
(Coconut Milk)
150-426

Christmas Tree
(Brown Sugar)
150-411



BLING on the joy



NEW! LIMITED EDITION

Festive Ornament Collection

Ornaments: green and red enamel with green and red stone accents; plus ivory faux pearls, goldtone bells and red beads.



Necklace
16 $\frac{1}{2}$ " L with 3 $\frac{1}{2}$ "
extender. Charms,
3/4"-1" L. **221-400**
reg. \$24.99
\$19.99

Drop Earrings
2 $\frac{1}{4}$ " L. Pierced.
221-510 reg. \$16.99
\$12.99

Stretch Bracelet
One size fits
most. Charms,
approx. 3/4" L.
221-620
reg. \$19.99
\$14.99

Pin
Green and red
enamel with green,
red and clear stone
accents. 2" L. **221-668**
reg. \$19.99
\$14.99



necklace and earrings set

NEW! LIMITED EDITION

Santa's Workshop Charm Collection

12 days of Christmas motif charms with glass faceted beads set in silvertone.

Necklace and Earrings Set

Necklace, 17" L with 3½" extender. Lobster closure. Charms, ¾" L. Pierced drops, ¾" L.

**224-011 reg. \$24.99
\$19.99 the set**

Bracelet

7¼" L with 1" extender. Lobster closure. Charms, ¾" L.

**224-140
reg. \$19.99
\$14.99**

Happy Holidays Collection

With colored enamel and clear pavé and colored stone accents.

Stretch Bracelet

With the look of Murano glass beads and metal-tone rondelles. One size fits most. Charm, approx. $\frac{3}{4}$ " L.

Wreath (Green Beads)/
Goldtone **221-122**
Reindeer (Ivory Beads)/
Goldtone **221-141**
Angel (Red Beads)/
Silvertone **221-380**
reg. \$16.99
\$12.99 each

Drop Earrings

1" L. Pierced.

Reindeer (Red)/Goldtone **219-915**
Wreath (Green)/Goldtone **219-858**
Angel (Green/Red)/Silvertone **219-972**
reg. \$12.99
\$9.99 each pair



trinkets to **TREASURE**



necklace and earrings sets



Sentimental Necklace and Earrings Set

Necklace, 16 1/2" L with 3 1/2" extender. Pendant, ranges from approx. 1/2"-1" L. Pierced studs, range from approx. 1/4"-1/2" L.

Moon (Silvertone)/Blue Stones **222-960**
 Heart (Silvertone)/Crystal Stones **223-842**
 Circle (Goldtone)/Crystal Stones **224-007**
 reg. \$16.99

\$12.99 each set



season of SENTIMENTS



January
217-874



February
217-912



March
217-927



April
218-153



May
218-172



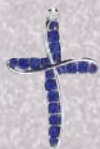
June
218-206



July
218-244



August
218-388



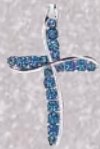
September
218-540



October
218-976



November
219-289



December
219-532

**NEW!
LIMITED
EDITION**

**Birthstone Cross
Necklace**

Colored glass stones set in silvertone. 16½" L with 3½" extender. Lobster closure. Cross, 1" L. reg. \$12.99
\$9.99 each



NEW!
LIMITED
EDITION

Let It Snow Collection

Snowflake motif with sparkling silvery and light blue stone accents set in silvertone.

Pendant Necklace

16½" L with 3½" extender. Pendant, approx. 1" L.

222-023

reg. \$16.99

\$12.99

Drop Earrings

Approx. 1" L. Pierced.

222-425

reg. \$12.99

\$9.99

Stretch Bracelet

One size fits most.

222-573

reg. \$16.99

\$12.99

winter WONDERS

Pearly Vine Collection

The look of pearls
with crystal stones set
in silvertone.

Y Necklace

16½" L with 3½"
extender. Lobster
closure. Drop, 1" L.

221-782
reg. \$19.99
\$14.99

Drop Earrings

¾" L. Pierced.


221-820
reg. \$12.99
\$9.99

Bracelet

Adjustable; one size

fits most. **222-019**
reg. \$12.99
\$9.99

NEW!
LIMITED
EDITION



**Holiday Rhinestone
Layered Stretch Ring**
With clear stone accents.
One size fits most.
Purple/Silvertone 224-944
Red/Goldtone 224-671
Blue/Silvertone 224-925
reg. \$12.99
\$9.99 each

RING IN the season

Bold Baguettes Collection
Emerald-, sapphire- and amethyst-
color stones set in silvertone.

Hoop Earrings
(Shown on model.) Approx.
1" L. Pierced. **224-246**
reg. \$16.99
\$12.99

Necklace and Earrings Set
Necklace, 16½" L with 3½"
extender. Pierced drops (shown
below), approx. ½" L. **224-231**
reg. \$34.99
\$26.99 the set



a glimmer of
GLAMOUR

Stretch Bracelet
One size fits most.
224-270 reg. \$22.99
\$16.99



**Sparkly Filigree
Collection**
SILVERTONE WITH
FILIGREE ACCENTS.

**Long Layered
Necklace**
With glass silvertone
beads. 30" L with
3 1/2" extender.
224-959
reg. \$24.99
\$19.99

Chandeller Earrings
Approx. 2" L.
Pierced. 225-879
reg. \$12.99
\$9.99

Stretch Bracelet
One size fits most.
Charms, approx.
3/4" L. 226-363
reg. \$16.99
\$12.99

twinkle
TWINKLE

Earrings
Studs, $\frac{1}{2}$ " L.
Pierced.
226-818
reg. \$12.99
\$9.99

Necklace
 $16\frac{1}{2}$ " L with $3\frac{1}{2}$ "
extender. Lobster
closure. **226-545**
reg. \$16.99
\$12.99

Stretch Ring
One size fits most.
Approx. $\frac{3}{4}$ " L.
227-030
reg. \$16.99
\$12.99

**Flexible Cuff
Bracelet**
One size fits most.
226-856
reg. \$13.99
\$10.99

NEW! LIMITED EDITION

Sunburst Collection
Pavé crystal glass stones
set in goldtone.

STERLING SILVER

NEW! LIMITED EDITION

Sterling Silver Collection
Clear pavé CZs set in
sterling silver.

Bow Necklace
17" L with 1" extender.
Pendant, $\frac{3}{4}$ " L. **231-077**
reg. \$64.99
\$49.99

Dove Necklace
17" L with 1" extender.
Pendant, $\frac{3}{4}$ " L. **227-230**
reg. \$64.99
\$49.99

Sterling Silver Genuine Aventurine Collection

Genuine green
aventurine stone
set in sterling silver.

Pendant Necklace
17" L with 1" extender.
Pendant, approx.
 $\frac{1}{2}$ " L. **854-510**
reg. \$69.99
\$54.99

Earrings
 $\frac{1}{2}$ " L drops.
Pierced.
854-524
reg. \$64.99
\$49.99



Ring
Approx. $\frac{1}{2}$ " W.

Sizes:

5 854-539	8 870-246
6 857-580	9 870-356
7 857-595	10 870-375

reg. \$69.99
\$54.99

holiday FINERY

STERLING SILVER

Sterling Silver Blue Spinel Heart Collection

Clear CZs and blue
spinel stones set in
sterling silver.

Necklace

17" L with 1" extender.
Pendant, $\frac{3}{4}$ " L.

227-059

reg. \$72.99

\$56.99

Earrings

Studs, $\frac{1}{2}$ " L. Pierced.

227-226

reg. \$64.99

\$49.99



Sterling Silver Genuine Onyx Halo Collection

Genuine onyx stone
with CZ accents set
in sterling silver.

Necklace

17" L with 1"
extender. Pendant,
 $\frac{1}{2}$ " L; 1.25-carat
equivalent.

502-937

reg. \$69.99

\$54.99

Ring

1.75-carat equivalent.

Sizes:

5 503-402 8 503-436

6 503-417 9 503-440

7 503-421 10 503-770

reg. \$69.99

\$54.99

Earrings
 $\frac{1}{4}$ " L studs;
.75-total carat weight
equivalent. Pierced.
503-398 reg. \$67.99
\$52.99



PLAID tidings!

◆ Plaid Button-Detail Slipper

Plaid upper with matching button detail, black faux-fur lining and trim. Man-made materials. Imported.

reg. \$23.99

\$17.99 each pair

White/Black

S(5-6) 169-473

M(7-8) 169-860

L(9-10) 169-894

XL(11-12) 170-291

Green/Black

S(5-6) 168-022

M(7-8) 168-037

L(9-10) 168-151

XL(11-12) 168-166

Red/Black

S(5-6) 168-170

M(7-8) 168-792

L(9-10) 169-200

XL(11-12) 169-435

Enjoy special prices and offers with an Avon account or Representative.

**NEW!
LIMITED
EDITION**



3-piece
set
includes
headband



Models are wearing
2-Pack Christmas Socks and
Scrunchie sold on page 37.
Size chart on page 118.

◆ **Snowflake Sleepshirt**

Snowflake-print green henley-style long-sleeve sleepshirt with front placket and buttons. Polyester/spandex. Center back length: 32" on M; 34" on 1X. Machine wash, line dry. Imported.

XS(0-2) **204-772** XL(16) **205-908**
S(4-6) **205-180** 1X(18W-20W) **205-912**
M(8-10) **205-817** 2X(22W-24W) **205-927**
L(12-14) **205-893** 3X(26W-28W) **207-619**
reg. \$42.99
\$32.99

◆ **Candy Cane-Striped Pajama Set**

Red-and-white-striped long-sleeve round-neck top. Matching pull-on bottom with elastic waistband and side pockets. Includes matching headband. Top and bottom: cotton. Neckline trim: cotton/spandex. Center back length for top: 25½" on M; 27" on 1X. Bottom inseam: 30" for all sizes. Machine wash and dry. Imported.

XS(0-2) **202-909** L(12-14) **203-336** 2X(22W-24W) **203-393**
S(4-6) **203-135** XL(16) **203-340** 3X(26W-28W) **204-768**
M(8-10) **203-321** 1X(18W-20W) **203-355**
reg. \$56.99
\$44.99 the set

O, COZY night

◆ **Whimsical
Holiday Slipper**
Red faux-sherpa
upper with green
embroidered
Christmas tree and
candy cane-striped
insole. Man-made
materials. Imported.
S(5-6) 171-738
M(7-8) 171-962
L(9-10) 171-977
XL(11-12) 171-981
reg. \$20.99
\$15.99



*two pairs of socks
+ hair scrunchie*

◆ **2-Pack Christmas
Socks with Scrunchie**

Red and green Santa
and black and red
reindeer socks. Comes
with red scrunchie
with jingle bells. Fits
shoe sizes 6-10.
Socks: polyester/
spandex; scrunchie:
100% polyester.
Machine wash
and dry (socks only).
Imported.

194-177
reg. \$12.99
\$9.99 the set

Enjoy special prices and offers with
an Avon account or Representative.

season of LIGHTS

◆ Bright Moments Hurricane Glass Set Light-Up

Vintage Christmas scene all aglow! Houses and snowflakes light up. Takes three AA batteries each (not included). On/off switch. Each, 3½" diam. Small: 4" H; large 8" H. Glass. Imported.

234-611

reg. \$32.99

\$24.99 set of 2 

◆ Bright Moments Glass Tree Light-Up

Santa is on the scene! Lights up and plays eight holiday tunes. Takes three AA batteries (not included). Switch for lights only, lights and sound or off. Glass, plastic, resin.

4" diam. x 10½" H. Imported. 235-584

reg. \$39.99

\$29.99  



PLAYS EIGHT HOLIDAY TUNES:

Jingle Bells
We Wish You a Merry Christmas
Silent Night
Deck the Halls
Joy to the World
The First Noel
Hark! The Herald Angels Sing
O, Christmas Tree



❖ **Bright Moments Bottle Brush Tree Set Light-Up**

Quintessential bottle brush Christmas trees with holiday lights. Takes three AA batteries each (not included). On/off switch. Each, 3" diam. Small: 6" H; medium: 7³/₄" H; large: 10¹/₄" H. Plastic, metal. Imported. **238-291**
reg. \$39.99

\$29.99 set of 3 

❖ **Bright Moments Inspirational Pewter Ornament**

Continue the tradition! Trim your tree with our annual collectible ornament, exclaiming Love, Joy, Peace, Family and Christmas. Embossed with the 2023 Avon Fine Collectibles stamp on back. Includes velvet keepsake pouch and easy-to-hang tassel. 2¹/₈" W x 2³/₄" L. Pewter, polyester. Imported.

234-573
reg. \$20.99
\$15.99

Don't forget the batteries! AA and AAA sizes available on Avon.com. For decorative use only. Keep out of reach of children.

Enjoy special prices and offers with an Avon account or Representative.



ANEW PLATINUM defying gravity has never been so easy

NEW

**Anew Platinum
Sculpting Body Serum**

With niacinamide, panthenol (pro-vitamin B5) and powerful peptides, effective anti-aging ingredients known to help boost moisture, leaving skin looking firmer, smoother and more youthful. 6.7 fl. oz.

506-249
reg. \$45
\$26.99



FREE belif aqua bomb jelly cleanser* and the solution hydrating face mask** with any \$30 skin care purchase, pages 40-66. **\$38 value.**
*Sold separately on page 66. **Sold separately on page 63.



Anew Platinum Firm and Sculpt Cream for Neck and Chest

With Peptide Lifting Complex. For skin on your neck and chest, vulnerable to sagging. Use PM after cleansing. 1.7 oz. net wt. **763-584 reg. \$42 \$24.99**

Anew Platinum Night Cream

Skin appears smoother overnight, resculpted over time. 1.7 oz. net wt. **753-439 reg. \$42 \$24.99**

Anew Platinum Eye & Lip Cream

Visibly smooths and reshapes the area around eyes...and lips, too! Dual applicator. .5 oz. net wt. **328-072 reg. \$42 \$24.99**

Anew Platinum Day Cream Broad Spectrum SPF 25

Fight gravity...or sun damage? With this cream, you can do both. 1.7 oz. net wt. **184-146 reg. \$42 \$24.99**

Anew Platinum Age Delay Serum

With niacinamide (vitamin B3) and panthenol (pro-vitamin B5), plus peptides that help visibly boost elasticity and lift facial contours for a more youthful look. Use AM and PM before moisturizer. 1 fl. oz. **625-609 reg. \$45 \$26.99**



Anew Platinum Regimen Set

Includes three full-size moisturizers plus one try-it-size serum.

- **Day Cream Broad Spectrum SPF 25** 1.7 oz. net wt.
- **Night Cream** 1.7 oz. net wt.
- **Eye & Lip Cream** .5 oz. net wt.
- **Anew Power Serum** .24 fl. oz.

4-PIECE BOXED KIT
732-639 reg. \$128 \$54.99

ANEW ULTIMATE combat multiple signs of aging

Why lie about your age? Your skin care can do that for you. Look more youthful day after day.



A. Anew Ultimate Multi-Performance Eye System

Visibly smooths crow's-feet and de-puffs under-eye bags. Cream, .5 oz. net wt. Elixir, .09 oz. net wt.

854-433 reg. \$42
\$24.99

B. Anew Ultimate Multi-Performance Day Cream Broad Spectrum SPF 25

You'll see wrinkles fade and youthful vibrance return.

1.7 oz. net wt. 763-307 reg. \$42
\$24.99

C. Anew Ultimate Night Repair Serum

With peptides, licorice, hyaluronic acid and niacinamide. Diminishes the appearance of fine lines and visibly improves skin tone and texture.

Use PM before moisturizer.

1 fl. oz. 625-355 reg. \$45
\$26.99

D. Anew Ultimate Multi-Performance Night Cream

It works while you sleep to revive and recreate the look of youthful skin. 1.7 oz. net wt.

157-162 reg. \$42
\$24.99

E. Anew Ultimate Supreme Eye Balm

Infused with squalane, sunflower seed oil and antioxidant vitamin E. Moisturizing formula. Wear alone or under makeup.

0.1 oz. net wt.
625-340 reg. \$45
\$26.99

**Anew Ultimate Supreme Dual Elixir**

Follow with Advanced Performance Crème. Serum/Oil, .67 fl. oz. each.

588-421 reg. \$60

Anew Ultimate Supreme Advanced Performance Crème

With Black Pearl Extract. See a dramatic difference in deep wrinkles and skin radiance.

1.7 oz. net wt.

014-735
reg. \$60

\$38.99 each

**Try-It Size!****Ultimate Multi-Performance Night Cream**

.5 oz. net wt.

626-222

reg. \$15

\$8.99





give your skin care a power boost

See powerful results in:

- hydration
- smooth texture
- radiance
- lines & wrinkles diminished
- firmness

Anew Power Serum

93% of women agree it dramatically improves skin's overall appearance.* Apply AM/PM after cleansing, before moisturizing.
1 fl. oz. **417-187**
reg. \$45
\$26.99

*Based on those who expressed an opinion in a consumer-perception study.

normal to dry skin

Nourishing Cream Cleanser

With panthenol (vitamin B5), rosemary and soapwort extracts. Removes impurities and makeup while restoring moisture.

5 fl. oz. **717-990**

reg. \$12

\$9.99



oily to normal skin

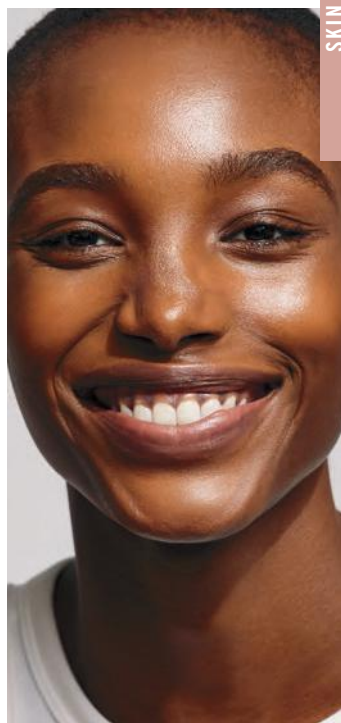
Soothing Whipped Oil Cleanser

Amino acid-based ingredients derived from coconut eliminate impurities and excess oil. With panthenol (vitamin B5) and aloe.

5 fl. oz. **718-025**

reg. \$16

\$12.99



normal, dry and combination skin

Balancing Gel Cleanser

Gel to foam. With panthenol (vitamin B5). Amino acid-based ingredients derived from coconut help remove oil and impurities while rebalancing skin.

5 fl. oz. **718-010** reg. \$12

\$9.99



normal, dry, combination and oily skin

2-in-1 Exfoliating Cleansing Balm

Melts away makeup and impurities. With panthenol (vitamin B5) and bamboo stem powder. Spatula included.

3.5 oz. net wt. **718-006** reg. \$30

\$24.99



Cleansing Brush

Includes one brush head. Requires two AA batteries (not included).

679-266

reg. \$47

\$28.99



ISA KNOX LXNEW ULTIMATE rejuvenating collection

NEW

Isa Knox LXNEW Ultimate Rejuvenating Multi-Corrector

Luxurious paeonol-infused serum with niacinamide and panthenol to help visibly address key signs of aging. Skin looks smoother and more youthful. Pat into areas prone to fine lines and wrinkles before moisturizer.

1.7 fl. oz.
496-595
reg. \$50
\$34.99



Isa Knox LXNEW Ultimate Rejuvenating Serum

With paeonol and ceramides, visibly improves elasticity, radiance and skin texture, and reduces the appearance of wrinkles.

1.35 fl. oz.
756-624 reg. \$56
\$44.99



Isa Knox LXNEW Ultimate Rejuvenating Eye Serum

Infused with paeonol and niacinamide to help visibly reduce fine lines around the eye area and depuff under-eye bags.

1 fl. oz. 567-177
reg. \$50
\$39.99



Isa Knox LXNEW Ultimate Rejuvenating Day Cream

With paeonol, visibly reduces wrinkles and improves the look of elasticity, radiance and skin texture. With nutmeg to help visibly even skin tone.

1.7 fl. oz.
351-892
reg. \$50
\$39.99



Isa Knox LXNEW Ultimate Rejuvenating Multi-Balm Stick

With peony extract, plus a firming complex featuring castor oil, moringa and argan oil. Apply to forehead, eyes and neck, or anywhere you want extra care.

.24 fl. oz. 267-593
reg. \$24
\$19.99



Isa Knox LXNEW Ultimate Rejuvenating Tinted Lip Balm

With glossy oil for silky-smooth lips. Wear alone or over lipstick.

.12 oz. net wt.
Red 010-452
reg. \$25
\$19.99



Isa Knox LXNEW Ultimate Rejuvenating Dual Night Cream

With paeonol and macadamia oil. Volume Cream: Rice bran extract helps visibly plump skin. Firming Cream: Helps boost collagen and elastin.

Each, .85 fl. oz.
564-015
reg. \$50
\$39.99



Innovative formulas with organic hibiscus extract help skin look lifted from every angle



Isa Knox LXNEW Platinum Sculpting Oil Serum

Hibiscus extract-infused serum, with rejuvenating peptides and antioxidants. Skin looks firmer and more lifted. 1.35 fl. oz. **318-720 reg. \$56 \$44.99**

Isa Knox LXNEW Platinum Sculpting Day Cream

Infused with moisturizing hibiscus extract and smoothing ceramide. Visibly tightens facial contours. 1.7 fl. oz. **318-845 reg. \$50 \$39.99**

Isa Knox LXNEW Platinum Sculpting Night Cream

With firming hibiscus extract, ceramide, squalane and shea butter. Skin looks firmer, smoother and more defined. 1.7 fl. oz. **318-850 reg. \$50 \$39.99**

Isa Knox LXNEW Platinum Sculpting Eye Cream

With hibiscus extract, panthenol and antioxidants. Leaves the delicate eye area looking firmer, brighter, more defined. .84 fl. oz. **318-883 reg. \$50 \$39.99**

Isa Knox LXNEW Platinum Sculpting Neck and Chest Cream

With hibiscus extract, ceramide, shea butter, panthenol and squalane to help vulnerable skin along the neck and chest appear firmer, smoother and lifted. 1.7 fl. oz. **548-069 reg. \$50 \$39.99**



SKIN CARE COLLECTIONS save on all your faves

ISA KNOX LXNEW PLATINUM SET

Isa Knox LXNEW Platinum
Sculpting Day Cream
1.7 fl. oz.

Isa Knox LXNEW Platinum
Sculpting Oil Serum
1.35 fl. oz.

2-PIECE SET
\$39.99

\$106 VALUE

216-681



ISA KNOX LXNEW ULTIMATE SET

Isa Knox LXNEW Ultimate
Rejuvenating Day Cream
1.7 fl. oz.

Isa Knox LXNEW Ultimate
Rejuvenating Serum
1.35 fl. oz.

2-PIECE SET
\$39.99

\$106 VALUE

216-548



ISA KNOX SET

Isa Knox Anew Clinical Line
Eraser with Retinol [1.0%]
Advanced Retinol Serum
1 fl. oz.

Isa Knox LXNEW Clean
Balancing Gel Cleanser
5 fl. oz.

Isa Knox Anew Clinical Collagen
Booster Microneedling Polisher
1.7 fl. oz.

3-PIECE SET
\$29.99

\$96 VALUE

541-576



RICE WATER BRIGHT SET

**Rice Water Bright
Rice Bran Gentle
Exfoliating Cleanser**
10.1 fl. oz.

**Rice Water Bright
Facial Massage Cream**
6.7 fl. oz.

**Rice Water Bright
Cleansing Facial Wipes**
50 sheets.

3-PIECE SET
\$19.99

OVER \$50 VALUE
216-218



THE FACE SHOP SET

the true cream aqua bomb aloe
1.69 fl. oz.

**Herb Day 365 Amino Acid
Facial Foaming Cleanser—Aloe**
5.7 fl. oz.

**Rice Water Bright
Foaming Cleanser**
5 fl. oz.

Jeju Aloe Hand & Body Lotion
13.5 fl. oz.

4-PIECE SET
\$35.99

OVER \$67 VALUE
216-882



FACE & HANDS SET

**Try-It-Size
belif the true cream aqua bomb**
.84 fl. oz.

**belif aqua bomb
hydrating body moisturizer**
10.1 fl. oz.

**Herb Day 365 Amino Acid
Cleansing Foam—Peony**
5.7 fl. oz.

**Daily Moment Vegan
Hand Cream—Sunrise Bedroom**
1.0 fl. oz.

4-PIECE SET
\$45.99

OVER \$75 VALUE
216-351



CLINICAL Line Eraser / Collagen Booster

Isa Knox Anew Clinical Line Eraser with Retinol Targeted Treatment

In just one week, the look of deep lines is smoothed and resurfaced. Use PM. .67 fl. oz. **729-397** reg. \$40 **\$23.99**

Isa Knox Anew Clinical Line Eraser with Retinol Treatment

Great for first-time retinol users. Use AM/PM. 1 oz. net wt. **729-382** reg. \$45 **\$27.99**



Isa Knox Anew Clinical Collagen Booster Eye Lift Pro Dual Eye System

With a peptide complex to help boost skin renewal. In one week, eye area looks lifted, firmer and tighter. Gel, .33 fl. oz. Cream, .33 fl. oz.

729-435 reg. \$40 **\$23.99**



Isa Knox Anew Clinical Line Eraser with Retinol [1.0%] Advanced Retinol Serum

Our highest dose of retinol. Dramatically reduces the appearance of fine lines, wrinkles and dark spots. 1 fl. oz. **390-751**

reg. \$50 **\$39.99**



100% showed clinical improvement of fine lines and wrinkles in one week, with increased results over time.

Isa Knox Anew Clinical Collagen Booster Microneedling Polisher

At-home alternative to micro-dermabrasion and micro-needling procedures. Visibly diminishes pores, fine lines and wrinkles. Skin looks smoother and more radiant.

1.7 fl. oz. **798-592** reg. \$34 **\$19.99**



NEW

Isa Knox Anew Clinical Collagen Booster Firming Cream

With peptides that boost skin renewal to help to visibly firm skin and restore youthful bounce. Also infused with moisturizing and skin-plumping niacinamide and squalane.

For optimal results, apply following Rejuvenating Serum Ampoules. Hygienic, airless pump. 1.7 fl. oz.

069-327 reg. \$45 **\$27.99**



Isa Knox Anew Clinical Collagen Booster Rejuvenating Serum Ampoules

Powerful peptide blend boosts skin renewal. 60 capsulated single-use ampoules. .008 fl. oz. each.

803-077 reg. \$62.50 **\$49.99**



CLINICAL Revitalize & Reveal

Isa Knox Anew Clinical Revitalize & Reveal

Extra Strength Retexturizing Peel

Results similar to a 35% pro glycolic peel.*
30 fragrance-free pads, 2" diam.

729-420
reg. \$40
\$23.99

*In 6 out of 8
attributes tested
over a 7-week
period.



Isa Knox Anew Clinical Revitalize & Reveal

Advanced Wrinkle Corrector

In just two weeks, wrinkles appear
reduced. 1.7 fl. oz.

729-401
reg. \$40
\$23.99



Isa Knox Anew Clinical Revitalize & Reveal Expert Resurfacing Fluid

79% as effective
as a pro micro-
dermabrasion
without the
same irritation.
1 fl. oz.

852-282
reg. \$44
\$27.99



Isa Knox Anew Clinical Revitalize & Reveal Resurfacing Lotion for Body

Exfoliates with gentle yet effective AHA
lactic acid. Moisturizes with shea butter.

5 fl. oz. **390-785**
reg. \$34
\$19.99



Isa Knox Anew Clinical Revitalize & Reveal Intensive Peel

An intensive
resurfacing peel
similar to pro
acid peels. With
AHA and PHA.

1 fl. oz.
780-025
reg. \$45
\$27.99



ANEW VITAMIN C / ISA KNOX ANEW SOLAIRE

Anew Vitamin C Overnight Radiant Mask

Visibly improves texture and boosts radiance. Apply after cleansing, treating and moisturizing.

1.7 fl. oz.
157-086
reg. \$36
\$19.99



Anew Vitamin C Warming Peel

With vitamin C flakes and natural seeds, exfoliates with a warming sensation.

3.4 fl. oz. 936-425
reg. \$27
\$15.99



Anew Vitamin C Brightening Serum

Skin is visibly energized and brightened with the power of 10% pure vitamin C. 1 fl. oz.

522-066
reg. \$44
\$24.99



Anew Vitamin C Illuminating Priming Moisturizer

With natural citrus extracts. Wear alone or under makeup.

1.7 fl. oz. 868-508
reg. \$34
\$18.99

Anew Vitamin C Brightening Eye Cream

Visibly reduces dark circles. Leaves under-eye area looking brighter and more even-toned.

.5 fl. oz. 868-512
reg. \$34
\$18.99

Anew Vitamin C Antioxidant Lip Treatment

Nourishes lips with vitamins C and E.

.13 oz. net wt. 784-547
reg. \$14
\$7.99



Anew Vitamin C Illuminating Body Serum

Light-reflecting pigments leave skin looking luminous.

6.7 fl. oz. 157-071
reg. \$34
\$19.99



Anew Vitamin C Nourishing Body Butter

With hydrating shea butter and sodium PCA, enriched with niacinamide, helps restore radiance with vitamins C and E to defend against free radical damage.

Uplifting fruity-floral and citrus scent. 7.8 fl. oz.

**443-767 reg. \$32
\$17.99**

Anew Vitamin C Glow Body Scrub

Sugar-based formula, with pineapple and papaya enzymes, and coffee seed extract, exfoliates dry, dull skin, while a blend of sunflower seed oil and sweet almond oil replenishes moisture. Refreshing citrus scent.

9 oz. net wt.
**443-752 reg. \$36
\$19.99**



100%
mineral
sunscreen
with no
white cast!

Isa Knox Anew Solaire Everyday Mineral Face Protection Cream Broad Spectrum SPF 50

Lightweight formula with zinc oxide. Suitable for sensitive skin. Water-resistant (40 minutes).

1.7 fl. oz. **437-143
reg. \$29
\$22.99**



Isa Knox Anew Solaire Everyday Face Protection Lotion Broad Spectrum SPF 50

Creamy lotion formula. Wear alone or under makeup. 1.7 fl. oz.

**911-400
reg. \$29
\$22.99**



Isa Knox Anew Solaire Active Face & Body Protection Lotion Broad Spectrum SPF 50

Water-light formula glides on smoothly all over face and body.

2.7 fl. oz. **154-948
reg. \$31
\$24.99**

HYDRA FUSION / SKINVINCIBLE / SOLUTIONS



Anew Hydra Fusion Nighttime Facial Treatment
Visibly plumps skin.
Increases moisture by 3X.
Relaxing rose scent.
1.7 oz. net wt. **139-429**
reg. \$34
\$18.99

Anew Hydra Fusion De-Puffing Eye Serum

With caffeine and a cooling ceramic tip. Instantly boosts hydration around the eye area by 3X. Eyes look and feel refreshed. .5 fl. oz.
137-737
reg. \$34
\$18.99



Anew Hydra Fusion 1.5% Hyaluronic Acid Serum

With three different molecular sizes of HA that reach multiple layers of skin's surface to visibly plump skin. 1 fl. oz.
290-390
reg. \$44
\$24.99



Anew Hydra Fusion Cleansing Micellar Water

Gently lifts dirt, oil and makeup while boosting hydration. No need to rinse off. 10.1 fl. oz.
139-380
reg. \$14
\$8.99



Anew Hydra Fusion Gel Cream

Skin appears smoother, refreshed and plumped with lasting hydration. 1.7 oz. net wt.
266-893
reg. \$34
\$18.99



Skinvincible Deep Recovery Cream
Lessens the look of age damage in weeks. Use PM. 1 oz. net wt. **290-351**
reg. \$40
\$23.99



Avon Solutions Nurtura Replenishing Cream
Adds moisture to dry skin. 1.7 fl. oz.
908-263
reg. \$10
\$7.99



Avon Solutions Anti-Aging Cream
Moisturizing formula works to visibly smooth the appearance of fine lines and wrinkles. 1.7 fl. oz.
906-681 reg. \$13
\$7.99



Avon Solutions Dramatic Firming Cream
Skin looks and feels smoother. 1.7 fl. oz.
374-657
reg. \$10
\$7.99



Avon Solutions Banishing Cream Skin Discoloration Improver
Visibly improves skin tone. 2.5 fl. oz. **463-374**
reg. \$10
\$7.99



Avon Care Silicone Glove Protective Hand Cream
Lasting protection from dryness. 3.4 fl. oz.
366-887
reg. \$6
\$2.69



FARM RX formulated with natural ingredients

NEW

Farm Rx Pineapple Plus Radiance Boosting Mask

With natural alpha hydroxy acid, plus an antioxidant-rich fruit complex to help skin look smoother and more radiant. 3 fl. oz.

456-266 reg. \$37

\$27.99

Farm Rx Pineapple Plus Instant Glow Toner

Revitalizing toner helps visibly minimize pores. Use AM and PM, after cleansing.

5 fl. oz. 027-382 reg. \$25

\$17.99

Farm Rx Pineapple Plus Brightening Jelly Serum

Helps improve dull, dry skin and reduce the appearance of fine lines, wrinkles and pores. Skin looks radiant. 1 fl. oz.

027-440 reg. \$44

\$32.99



NEW

Farm Rx Amazon Berry Boost Moisturizing & Firming Mask

Ultra-moisturizing face mask with acai berry, Brazil nut oil plus murumuru and cupuaçu butters. Helps skin look firmer, smoother and tighter. 3 fl. oz. 413-052 reg. \$37

\$27.99

Farm Rx Amazon Berry Boost Smoothing & Firming Body Cream

With moisturizing and nourishing Brazil nut oil plus murumuru and cupuaçu butters.

5 fl. oz. 027-655 reg. \$25

\$17.99

Farm Rx Amazon Berry Boost Lifting & Firming Serum

With acai berry, known to help fight visible effects of collagen breakdown so skin looks smoother and firmer. 1 fl. oz. 414-499 reg. \$44

\$32.99



Farm Rx Bakuchiol Serum
Concentrated lightweight oil-textured formula penetrates skin's surface to target fine lines, wrinkles and dullness without irritation. 1 fl. oz.

247-417

reg. \$44

\$32.99



98%
natural

Farm Rx Bakuchiol Eye Cream

Visibly reduces dark circles, fine lines and wrinkles without irritating the delicate eye area.

1 fl. oz. 565-834

reg. \$37

\$27.99



90%
natural

Farm Rx Bakuchiol Cream

Moisturizing cream with bakuchiol, a plant-based alternative to retinol that you can use during the day. Visibly reduces wrinkles. Vegan. Hypoallergenic. Suitable for sensitive skin. 3.04 fl. oz.

004-044

reg. \$44

\$32.99



92%
natural

FARM RX formulated with natural ingredients

Farm Rx Super Greens

Multivitamin Moisture Cream

Locks in essential nourishing moisture. Use daily after cleansing, serums and treatments. 3.04 fl. oz.

314-141 reg. \$37

\$27.99

Farm Rx Super Greens

Cooling Gel

Lightweight moisturizer helps soothe and cool skin. Apply a thicker layer, after serum, as a mask to hydrate overnight as needed. 3.04 fl. oz.

354-227 reg. \$37

\$27.99

Farm Rx Super Greens

Nourishing Cleansing Balm

Helps boost moisture barrier as it dissolves makeup and impurities. For normal, dry, combination, oily and sensitive skin types. 3.3 fl. oz.

516-944 reg. \$41

\$30.99

Farm Rx Super Greens

Refreshing Gel Cleanser

With soothing aloe. Convenient pump. Eco-friendly packaging and glass bottle. Use AM/PM. 8.11 fl. oz.

913-049 reg. \$25

\$17.99

Farm Rx Super Greens

Refreshing Gel Cleanser Refill*

Includes two refills. 16.9 fl. oz.

913-053 reg. \$37

\$27.99

*Not shown.

Farm Rx Super Greens

Refreshing Eye Cream

With nourishing Super Greens formula, plus cucumber extract. Hydrates and helps skin feel soothed. Green tea helps visibly de-puff. 1 fl. oz.

412-826 reg. \$31

\$22.99



NEW

Farm Rx Super Greens Trial Kit

Includes two try-it sizes:

- Cooling Gel, 1.7 fl. oz.
- Multivitamin Moisture Cream, 1.7 fl. oz.

496-270 reg. \$25

\$17.99



CBD helps calm skin and visibly reduce redness and discomfort so skin looks healthy and radiant.

95% natural

95% natural

99% natural

Farm Rx Green Goddess Cream
100mg CBD. Helps soothe and visibly reduce redness. Use AM/PM after serum. For added radiance, follow with Facial Oil. 3.04 fl. oz. **338-027** reg. \$44 **\$32.99**

Farm Rx Green Goddess High Dose Serum
300mg CBD. Skin feels softer and soothed. Use AM/PM after cleansing, before CBD cream or facial oil to visibly boost results. 1 fl. oz. **338-031** reg. \$50 **\$37.99**

Farm Rx Green Goddess Facial Oil
100mg broad spectrum CBD. Suitable for sensitive skin. Rich in omega acids and vitamin E. Use AM/PM, after cleansing and serum. Fragrance-free. 1 fl. oz. **934-733** reg. \$50 **\$32.99**



NEW

Jeju Aloe Hand and Body Lotion
With aloe vera extract, known to calm and soothe irritated skin and dry hands. Clinically proven to help dry skin feel nourished for 48 hours. 13.5 fl. oz.
069-441 reg. \$12
\$8.99

NEW

Jeju Aloe Body Wash
Helps moisturize dry skin while it cleanses, leaving skin feeling nourished. Light aloe scent. 13.5 fl. oz.
069-509
reg. \$12
\$8.99

Jeju Aloe Fresh Soothing Foam Cleanser

Gentle gel-to-foam formula hydrates as it cleanses. With soothing aloe, moisturizing panthenol and other refreshing herbal extracts such as cica, camellia leaf, licorice root and rosemary. 5 fl. oz. **450-090** reg. \$11.99 **\$9.99**



Jeju Aloe Refreshing Face Mask

With soothing aloe, helps hydrate and nourish dry winter skin. Single-use mask. 1.01 fl. oz. **069-480** reg. \$3 **\$2.50**



Jeju Aloe Fresh Soothing Gel

With 95% aloe vera extract, instantly hydrates and soothes dry, sensitive skin. Infused with other soothing herbal extracts, like chamomile, lemon balm, rosemary and lavender. For face and body. 10.1 fl. oz. **984-304** reg. \$8 **\$6.99**



Jeju Aloe Fresh Soothing Mist

With 90% aloe vera extract. Oil-free. Instantly soothing and cooling. After cleansing, spray wherever skin feels dry. 4.4 fl. oz. **925-379** reg. \$16 **\$12.99**



Jeju Aloe Fresh Ice Soothing Gel

3-in-1 gel with aloe vera extract. Use as moisturizer, soothing after-sun care or facial pack. Refrigerate for enhanced cooling. Apply to dry, sensitive, irritated areas of face and body. 10.1 fl. oz. **925-402** reg. \$11 **\$8.99**



THE FACE SHOP Rice Water Bright

Rice Water Bright Light Facial Cleansing Oil

Removes every trace of makeup and gently cleanses impurities on skin. With jojoba oil and rice water extract, known to visibly brighten and moisturize skin. 5 fl. oz. **720-199** reg. \$14 **\$11.99**

Rice Water Bright Facial Cleansing Lotion
Rice bran oil helps brighten skin. Gently removes makeup and impurities. 6.76 fl. oz. **720-184** reg. \$12 **\$9.99**



Rice Water Bright Facial Massage Cream

With rice water, enriched with vitamins, ceramide and minerals. Use after cleansing 2-3 times a week. 6.7 fl. oz. **450-200** reg. \$24 **\$19**



NEW

Smaller Size! Rice Water Bright Foaming Cleanser

Same formula as the 10 fl. oz. Rice Water Bright Foaming Cleanser in a more convenient size for your medicine cabinet. 5 fl. oz. **478-479** reg. \$8 **\$6.49**



Rice Water Bright Mild Cleansing Water

Removes makeup and impurities with micelles, so no need to rinse off! Use with cotton pad. 16.9 fl. oz. **288-360** reg. \$14.40 **\$12**



A. Rice Water Bright Foaming Cleanser

Light whipped foam leaves skin feeling cleansed and refreshed. With rice water and soapwort extract. Skin looks clear and bright. 10 fl. oz. **508-093** reg. \$13 **\$11**

B. Rice Water Bright Rice Bran Gentle Exfoliating Cleanser

Daily scrub with organic rice bran powder, rice bran oil and hydrated silica. 10 fl. oz. **376-865** reg. \$15.99 **\$12.99**

C. Rice Water Bright Cleansing Facial Wipes

Great on the go. With rice extract to moisturize while cleansing. Removes eye makeup. 50 sheets. **508-108** reg. \$11 **\$9**





Calendula Essential Moisture
Daily skin care for irritated and sensitive skin. With moisturizing calendula extract, a soothing herb complex, and the ultimate hydrator, hyaluronic acid.

A. Serum
A moisturizing and soothing serum that helps calm skin and enhance hydration. 1.35 fl. oz. **980-533** reg. \$13.50 **\$11.20**

B. Eye Cream
A lightweight, non-greasy, moisturizing and soothing eye cream. .67 fl. oz. **409-823** reg. \$12.50 **\$10.40**

C. Cream
A moisturizing cream that instantly hydrates while it gently helps soothe dry, itchy, irritated skin. 1.69 fl. oz. **465-400** reg. \$13.50 **\$11.20**

Rice & Ceramide Trial Kit
Moisturizing skin care set replenishes and refreshes your look. Try all three, or to use as a complete travel kit. Three-piece boxed mini sizes. Includes: Toner, 1.15 fl. oz.; Emulsion, 1.15 fl. oz.; Cream, 0.34 fl. oz. **543-617** reg. \$8.75 **\$7.20 the kit**



Rice & Ceramide Moisturizing

D. Toner
Balancing. AM/PM, use after cleansing, before serum and moisturizer. 5 fl. oz. **124-142** reg. \$8.25 **\$6.80**

E. Emulsion
Replenishing. Semi-liquid. AM/PM, after cleansing or toning, before serum, moisturizer. 5 fl. oz. **876-976** reg. \$8.25 **\$6.80**

F. Cream
Moisturizing. AM/PM, after cleansing, toning and serum. 1.69 fl. oz. **124-635** reg. \$9.25 **\$7.60**



THE FACE SHOP Herb Day 365 cleansers

Herb Day 365 Amino Acid Facial Foaming Cleanser

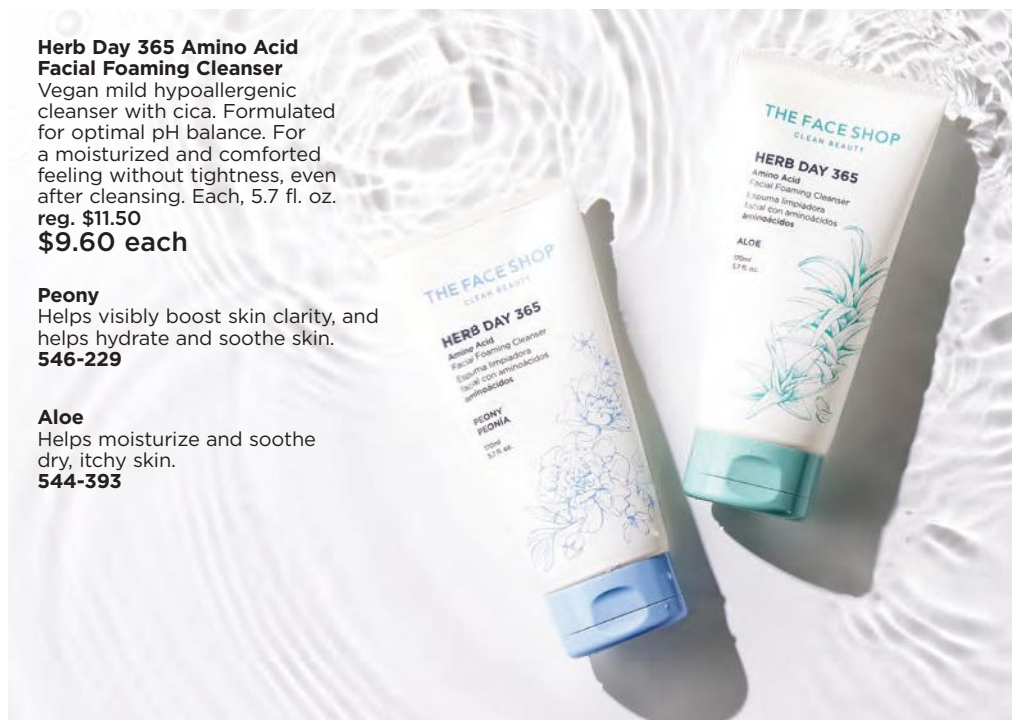
Vegan mild hypoallergenic cleanser with cica. Formulated for optimal pH balance. For a moisturized and comforted feeling without tightness, even after cleansing. Each, 5.7 fl. oz. reg. \$11.50
\$9.60 each

Peony

Helps visibly boost skin clarity, and helps hydrate and soothe skin.
546-229

Aloe

Helps moisturize and soothe dry, itchy skin.
544-393



Herb Day 365 Master Blending Facial Foaming Cleanser - Mung Bean & Mugwort

For trouble-prone skin. Formulated with naturally derived herbal and fruit extracts, and coconut-derived moisturizing ingredients. Free of synthetic colorants and parabens. 5.7 fl. oz. **135-093**
reg. \$5.25
\$4.40



Herb Day Cleansing Tissue

Removes makeup and impurities. With soapwort, lady's mantle, lily, chamomile and cornflower.

20 sheets. **280-670**
reg. \$2
\$1.60

70 sheets. **134-450**
reg. \$5.75
\$4.80



The Face Shop Smile Foot Exfoliating Cream

A unique 2-in-1 daily foot exfoliating cream that removes dead skin cells as it soothes skin. With naturally moisturizing urea, which leaves feet feeling soft and hydrated.

4 fl. oz. **535-426**
reg. \$11.99
\$9.99



The Face Shop Rich Hand V Special Care Hand Mask

Coated masks contain nourishing lotion with sunflower seed oil and urea for instant moisturization. Two disposable masks, one for each hand.

541-724
reg. \$4
\$3



The Face Shop Smile Foot Mask

Disposable foot mask, with naturally moisturizing urea, shea butter and collagen, for baby-soft feet! Refreshes with peppermint oil. Contains two masks, one for each foot.

535-957
reg. \$4.79
\$3.99



The Face Shop The Solution Advanced Hydrating Face Mask

With hyaluronic acid, which holds 1,000 times its weight in water to help skin look youthfully plumped and baby-soft.

624-966 reg. \$3
\$2.50



Daily Moment Vegan Hand Cream

Deeply moisturizing daily vegan hand cream with a long-lasting scent. Eco-friendly and vegan-certified.

Each, 1.0 fl. oz.
reg. \$4
\$3.29 each

1—Sunrise Bedroom

Bergamot, lavender and cedarwood.
741-940

2—Morning Florist

Lemon, Bulgarian rose and violet leaf.
741-955

3—Noon Park

Grapefruit, hyacinth and iris.
754-636

4—Sunset Rooftop

Pear, rose and patchouli.
757-931

5—Midnight Street

Cassis, rose and amber.
762-334

6—Dawn Attic

Orange blossom, pimento and vetiver.
762-353





**explosive hydration...
all over!**



BELIEVE IT!

3 steps in 1

balm → cream → oil

melts away makeup and impurities
while cleansing skin with hydration

aqua bomb makeup removing cleansing balm

*For dryness, dullness
& uneven texture*

Gently removes all traces of
makeup in one step. Smooth and
refreshing like sherbet. With lotus
flower and marshmallow root, herbs
known to help boost moisture and
radiance. No oily residue. For a
double cleanse, follow with
aqua bomb jelly cleanser. 3.3 fl. oz.

443-179 reg. \$46

\$38

BELIF believe in truth for your skin



aqua bomb hydrating body moisturizer

For dryness, dullness & uneven skin tone

A favorite lightweight gel moisturizer, with lady's mantle, an herb known for its antioxidant and soothing benefits—now for your body. Intense hydration for visibly firmer, clearer and brighter skin. Silky finish. For all skin types. 10.13 fl. oz.

443-040 reg. \$36 \$30

BELIEVE IT!

93%
of people agreed
skin appears smoother*

*Based on a clinical study.

belif
believe in truth

aqua bomb hydrating body moisturizer
With skin brightening niacinamide

Instantly hydrates with a soft, lightweight gel texture!
Leaves skin feeling smooth, not sticky?
Mineral oils
Synthetic fragrances
Synthetic organic dyes
Animal origin ingredients
Dermatologically tested

Yes
0%+
0%+
0%+
0%+

With 2 Napiers formulas:
hyaluronic acid, niacinamide
*The numbers represent percentage of ingredients added



the true cream aqua bomb
For dryness, dullness & uneven texture
Water-based refreshing gel-cream cools and hydrates. (Full size not available.)
Try-it size, .84 fl. oz.
235-713 reg. \$24 \$22



the true cream moisturizing bomb
For dryness, loss of elasticity & firmness
Creamy, cushiony, whipped texture, envelops skin with intense moisture.
Full size, 1.68 fl. oz.
948-463 reg. \$42 \$38
Try-it size, .84 fl. oz.
498-139 reg. \$24 \$22



the true cream aqua bomb aloe
For redness, irritation & dryness
Moisturizing gel-cream with aloe vera extract to instantly soothe skin, plus hydrating hyaluronic acid and soothing vitamin E.
1.69 fl. oz.
788-284 reg. \$42 \$38



BELIEVE IT!

96%
of people said their skin felt hydrated after cleansing*

aqua bomb jelly cleanser

For dryness, dullness & uneven texture

Jelly to foam. Amino acids and glycerin-based cleansing agents gently cleanse.

5.41 fl. oz. **445-353 reg. \$35 \$30**

*Based on a clinical study.

aqua bomb hydrating toner
For an extra boost of hydration

Lightweight water-based toner, with hyaluronic acid, honeysuckle flower extract and baobab tree seed extract. Leaves skin looking soft and smooth with a healthy-looking glow. Use after cleansing, before serum and moisturizer.

6.75 fl. oz.
952-974 reg. \$36 \$30



moisturizing eye bomb

For dryness, loss of elasticity & firmness

Lightweight, refreshing eye cream cools on contact. Helps keep eye area looking firm, resilient and smooth.

.84 fl. oz. **445-478 reg. \$53 \$48**



aqua bomb sleeping mask

For dull, dry, fatigued skin

Unique jelly-pudding texture!

Skin feels replenished overnight. Explosive hydration for smoother skin and a healthy glow.

2.53 oz. net wt. **514-717 reg. \$42 \$38**



Mission Luxereve Cream

Perfect for dry skin. With luxurious oils and other moisturizing ingredients for a more youthful, sculpted appearance. Use AM/PM, after Mission Luxereve Serum. In AM, follow with sunscreen.

1.76 oz. net wt.
635-740 reg. \$350 \$280



Mission Luxereve Lotion

Lightweight hydration ideal for normal skin. Improves the appearance of elasticity and firmness, and helps even tone and texture. Use AM/PM, after Serum. In AM, follow with sunscreen.

3.77 oz. net wt.
713-459 reg. \$95 \$80



Mission Luxereve Serum

Deluxe regenerating serum formulated to help boost skin elasticity and firmness. Use AM/PM, before moisturizing with Cream or Lotion.

1.01 fl. oz.
635-754 reg. \$225 \$180





**avon pure
essential oils**

Plant-derived. Free of parabens,
gluten, phthalates and sulfates.

**Avon Pure
Essential Oil
Eucalyptus**

Refreshes
the mind.
Rejuvenates
the senses.
Use with
either
Avon Pure
Diffuser.
Not for
use on skin.
.34 fl. oz.
098-724
reg. \$21
\$17



**Avon Pure
Ceramic
Aroma Diffuser**
Premium ceramic.
Whisper-quiet.
Also functions
as a humidifier.
BPA-free plastic
water reservoir.
Auto shutdown on
timer or when the
water runs out.
6.8 fl. oz. capacity.
Approx. 3³/₄"
diam. x 6³/₄" H.
141-846
reg. \$71
\$57



Avon Pure Diffuser

LED light-up
diffuser with three
different settings
releases a fine
mist of essential
oil and water into
the air so that you
can easily fill your
space with the
essence of
the oils. 6¹/₂" H.
USB connection.
915-424
reg. \$39
\$32



**Avon Pure
Essential Oil Case**
Fits up to 48
essential oils and
roll-ons. Man-made
material with easy
maintenance. Two
padded stackable
trays for added
protection of glass
bottles. Includes
handle and
all-around zipper.
8¹/₄" L x 6¹/₈" W
x 7¹/₂" H. **179-470**
reg. \$51
\$41



**Avon Pure
Roll-On De-Stress
Essential Oil**

With lavender
and peppermint.
Apply directly
on skin. Instantly
transform your
day. Contains
sweet almond
oil, a carrier oil.
.34 fl. oz.
098-963
reg. \$24
\$19



re:tune

INNER BEAUTY*

Feel good on the inside
so you can look great
on the outside.

ANTI-AGING ANTIOXIDANTS

Neutralize free radicals
and defend skin from
the look of aging



re:tune Inner Beauty Youth Boost
With ingredients that help improve the clarity and hydration of skin while boosting antioxidant levels to help skin better defend itself from the look of aging.* 60 tablets.

456-137
reg. \$34
\$28



RE:TUNE INNER BEAUTY feel good inside, look great outside

re:tune Inner Beauty Be Calm

Helps enhance your ability to stay calm and focused.* 30 vegetarian capsules.

123-567
reg. \$38
\$31



re:tune Inner Beauty HydraBoost

Helps boost hydration and visibly soften lines with hyaluronic acid.* 30 vegetarian capsules.

122-761 reg. \$34
\$28



re:tune Inner Beauty Clear Complexion

Supports a visibly clear, even complexion. Helps balance the gut microbiome.* 30 capsules.

123-332
reg. \$36
\$30



re:tune Inner Beauty Hair, Skin & Nail Health

Promotes a healthy response to skin stressors while helping build healthy hair, skin and nails.* 60 tablets.

396-908
reg. \$42
\$33



re:tune Inner Beauty Metabolism Boost

A natural, plant-based energy and metabolism booster that helps you burn more calories.** 60 vegetarian capsules.

907-195
reg. \$35
\$28



re:tune Inner Beauty Hydration

Supercharge your water for optimal hydration and more energy, and to boost skin health. Contains electrolytes, B vitamins and antioxidants.* Berry flavor. 20 packets.

966-140
reg. \$27
\$22



re:tune Inner Beauty Plant Protein Powder**

Non-GMO. Probiotics, enzymes for easy digestion.* Vegan, gluten-free, soy-free, no sugar added. 15 servings. Creamy Vanilla

332-473
reg. \$49
\$39



**Not sold in California.

re:tune Inner Beauty Hunger Block

Helps reduce your food cravings for hours.* 60 vegetarian capsules.

906-920
reg. \$31
\$25



RE:TUNE INNER BEAUTY SET

Clear Complexion
30 capsules.

Hunger Block
60 vegetarian capsules.

2-PIECE SET
\$29.99

\$67 value
232-274



*These statements have not been evaluated by the Food and Drug Administration. This product is not intended to diagnose, treat, cure or prevent any disease. **With reduced dietary intake and exercise.

**FACE
MAKEUP &
TOOLS
SAVE UP
TO 30%!**

PAGES 71-79

helloH₂Glo!

Intensely hydrating
collection that
feels good and is
good for you!

GLOKOLOR Clean. Vegan. Hydration.

Rich serum
pampers lips.

**fmg GLOKOLOR
Lip Serum Pencil**
Infused with a burst
of peppermint oil, a
nourishing lip booster
complex and argan
oil. Lips feel smooth
and refreshed.
Free from parabens
and fragrance.
.06 oz. net wt.
**787-508 reg. \$20
\$14**



Ultrafine water-
based formula
awakens skin while
locking makeup
in place.

**fmg GLOKOLOR
Hybrid Face Mist**
Spritz it anytime,
anywhere for an
instant boost of
moisture to refresh
skin. With aloe vera,
agave and algae
extracts to help
soothe and nourish
the complexion.
Dermatologically
tested. Free from
parabens and sulfates.
2.7 fl. oz.
**787-599
reg. \$24
\$16**



Prep step with
instant boost
of moisture!

**fmg GLOKOLOR
Hybrid Face Primer**
Light, breathable
formula softens
the appearance of
imperfections while
creating a flawless
canvas for makeup.
With aloe vera,
agave and algae
extracts to help
soothe and nourish
the complexion.
Dermatologically
tested. Free from
parabens and
sulfates.
1 fl. oz.
**787-637
reg. \$24
\$16**





CASHMERE FACE

Nougat (W) 126-107		
Marshmallow (N) 131-849	Macadamia (W) 136-525	Ganache (WO) 136-889
Cappuccino (N) 136-893	Chai (WO) 136-559	Toasty (N) 139-027
Praline (N) 141-406	Tiramisu (W) 137-278	Soufflé (N) 139-730
Muffin (W) 142-307	Gingerbread (C) 142-311	Pudding (N) 146-097
Amaretto (N) 146-188	Latte (W) 147-480	Brownie (WO) 147-461
Hazelnut (W) 147-495	Cognac (W) 147-681	Pecan (N) 149-699
Java (W) 149-722	Clove (N) 149-756	Truffle (C) 150-263

Featured shade:
24 Hour Foundation In Java.

Good Housekeeping Magazine
2021 Beauty Award Winner.

fmg Cashmere 24 Hour Foundation*
24 hours of comfortable, breathable wear.
Full, flexible coverage. Soft-focus matte finish.
Visibly blurs pores and fine lines for a smoother
complexion. With antioxidant botanical extracts.
Water-resistant. Vegan. 1 fl. oz. **reg. \$32**
\$19.99

*Available in Cool (C),
Neutral (N), Warm (W)
and Warm Olive (WO) undertones.

**Available in Cool (C), Neutral (N) and
Warm (W) undertones.

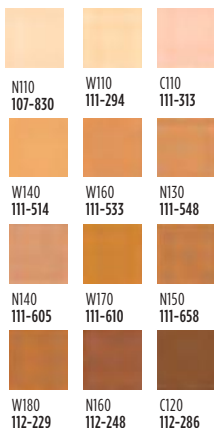
CASHMERE FACE luxury in the shade of you

2-in-1 powder can be worn wet or dry.

fmg Cashmere Compact Powder Foundation**

Use as foundation or setting powder. Buildable medium-to-full coverage. Soft-focus matte finish. Controls shine. With collagen, lavender oil, and artichoke and chamomile extracts.

.40 oz. net wt.
reg. \$36
\$19.99



N150
111-658

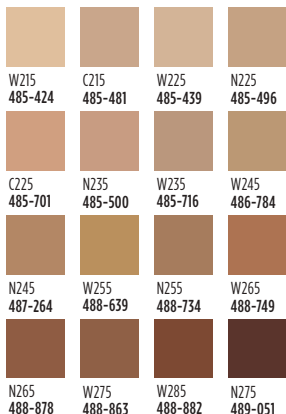


Velvety soft-matte color.

fmg Cashmere Cushion Foundation**

Enriched with soothing calendula extract, moisturizing squalene and skin-brightening niacinamide. Helps to cover the look of imperfections. Light-to-medium coverage. Includes sponge puff applicator. Free from parabens, phthalates and fragrance.

.42 oz. net wt.
reg. \$27
\$19.99



W275
488-863

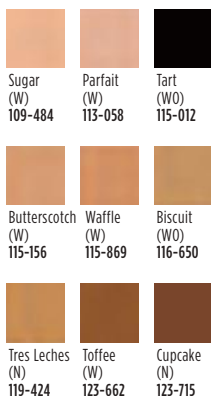


24 hours of comfortable, breathable wear.

fmg Cashmere 24 Hour Concealer*

Full coverage. Soft-focus matte finish. Visibly corrects dark circles and imperfections. With antioxidant botanical extracts. Water-resistant.

.20 fl. oz.
reg. \$22
\$13.99



Tres Leches (N)
119-424



Packaging may vary.

MATCH MAKEUP

Tint + Moisturize
+ Glow

fmg Magix Tint Radiant Tinted Moisturizer*

Buildable coverage with a radiant finish. Evens skin tone, boosts moisture and blurs flaws. Suitable for all skin types. 1 fl. oz.

reg. \$14
\$8.99

*Packaging may vary.



Medium 718-078
Medium Deep 718-082



Camouflage imperfections.

fmg Match Wand Correcting Stick

Minimize skin concerns without creasing or caking! With shea butter and vitamin E. Free from parabens, phthalates, and sulfates. .21 oz. net wt.

reg. \$16
\$12.99



Pistachio: neutralizes redness 726-770



Gelato: brightens dullness 726-785
Sherbet: neutralizes dark circles and marks 726-790

Pistachio 726-770



Conceal + Contour +
Highlight

fmg Match Wand Foundation Stick

Instantly blurs and perfects skin. Helps to control oil and shine. Full and flexible all-over coverage in a demi-matte finish. Water-resistant. With shea butter and antioxidant vitamin E. Perfect for easy touch-ups. Free from parabens, sulfates and phthalates. Vegan. .21 oz. net wt.

reg. \$16
\$11.19

Truffle (C) 596-297



Instantly hydrates, blurs and evens tone!

fmg Match Filter Serum Tint Foundation

Infused with hyaluronic acid, vitamin E and a berry complex. Demi-matte powder finish. Buildable sheer-to-medium coverage.

Suitable for all skin types. Includes sponge applicator. Free from talc, parabens and fragrance. .31 oz. net wt.

reg. \$18
\$12.99



Fair 932-491
Fair Light 932-620
Light 932-640



Light Medium 932-654
Soft Medium 932-783
Medium 932-836



Medium Deep 933-153
Tan Deep 933-168
Deep 933-172



Marshmallow (N) 594-882
Vanilla (W) 594-935
Macadamia (W) 595-028
Chai (W) 595-157



Toasty (N) 595-229
Cappuccino (W) 595-233
Tiramisu (W) 595-252
Amaretto (N) 595-267



Latte (W) 595-400
Hazelnut (W) 595-860
Pecan (N) 595-946
Truffle (C) 596-297

Available in Warm (W), Neutral (N) and Cool (C) undertones.



Mineral-infused loose powder and brush in one!

fmg Match Set Finishing Powder To-Go

Creates an invisible veil that controls shine and sets makeup. Lightweight formula diffuses light and visibly blurs pores and fine lines. Silky-soft matte finish never looks cakey. Free from talc, parabens and fragrance. .09 oz. net wt. **227-063**

reg. \$19
\$12.99



Creates an invisible veil that controls shine and sets makeup.

fmg Match Set Finishing Powder

Lightweight mineral-infused loose powder formula diffuses light and visibly blurs pores and fine lines. Silky-soft matte finish never looks cakey. Includes puff applicator. Free from talc, parabens and fragrance. .22 oz. net wt.

932-472
reg. \$17
\$13.99



Helps control oil and create a shine-free canvas.

fmg Match Blur Oil Control Primer Balm

Sheer mattifying formula. Special blurring powder microspheres help reduce the look of fine lines and pores. With nutmeg extract for antioxidant benefits. Includes sponge applicator. Free from talc and parabens. .59 oz. net wt.

932-381
reg. \$19
\$12.99



Blend of ultrafine rose quartz, ruby and tourmaline.

fmg Match Dust Finishing Powder

Weightless loose mineral powder diffuses light, visibly blurs pores and controls shine. Soft matte finish. Includes no-spill twist-and-lock sifter. Free from talc, oil and parabens. .21 oz. net wt. **reg. \$17**

\$13.99

Translucent
Medium-Deep
594-768



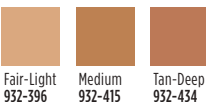
Helps camouflage as it corrects and brightens.

fmg Match Corrector Brightening Perfector

Creamy veil of color helps blur flaws and reduce the appearance of fine lines, dark circles and blemishes. Buildable sheer-to-medium coverage with a demi-matte finish. Free from talc, parabens, sulfates, alcohol and fragrance. .11 oz. net wt. **reg. \$13**

\$8.99

Medium
932-415



GLIMMER CHEEK + LIP

Brightens up lips and cheeks.

fmg Glimmer Lip & Cheek Stain

Highly pigmented shades that wear all day. Lightweight gel formula blends and builds like a dream, providing the perfect pop of gorgeous luminous color. Brush tip applicator. Transfer-proof. Free from parabens and fragrance. Vegan. .19 fl. oz.

reg. \$14
\$11.99



Plumeria
628-851



Rosette
628-832



Creamy formula for lips and cheeks.

fmg Glimmer Be Blushed Cheek Color

Creamy moisturizing formula glides on smoothly without streaking for a natural flush of color. Buildable coverage. Soft dewy finish. With skin-nourishing vitamin E for antioxidant benefits. Free from parabens, phthalates and fragrance. .14 oz. net wt.

reg. \$14
\$9.99

Blushing Nude
022-911



Icy Petal
022-854



Blushing
Nude
022-911



Golden
Rose
022-840



Tropical
Peach
022-964



Crushed
Berry
022-945



Instant pop of color.

fmg Glimmer Powder Blush

Richly pigmented, silky pressed powder hugs cheeks. Weightless formula with ultrafine pearl for added dimension and vivid payoff blends effortlessly. Buildable coverage and soft matte finish. With skin-nourishing vitamin E for antioxidant benefits. Free from parabens, phthalates and fragrance.

.28 oz. net wt.

reg. \$14
\$8.99



Petal Pink
618-209



Pink Passion
618-213



Cranberry Crush
618-194



Petal Pink
618-209

TIP: Dust along cheekbones, bridge of the nose, brow bones, collar bones and shoulders.



Prosecco
905-580

Subtle yet eye-catching radiance.

fmg Glimmer Powder Illuminator
Finely milled powder creates a multi-dimensional luminous glow instantly. Lightweight buildable formula with vitamin E builds and blends effortlessly, providing a naturally radiant finish. Free from parabens, phthalates and fragrance.
.35 oz. net wt. reg. \$14
\$8.99 each

Rosé
463-628

DUAL-ENDED BRUSHES & MORE

fmg Kabuki Brush

With soft, angled bristles to effortlessly blend pressed or loose powder formulas. Retractable. Cap keeps the brush head safely covered when not in use. 3 3/4" L x 1" diam. **732-370** reg. \$16 **\$12.59**



fmg Flawless Complexion Sponge

With a full rounded bottom for all-over makeup application and blending, and a flat side for contouring, highlighting and concealing. 1 1/2" W x 2 1/2" H. 100% PU, latex-free. **140-160** reg. \$9 **\$6.99**



fmg Eyeshadow Blending Brush

With a soft, domed crease brush on one end and a flattened, all-over eyeshadow brush on the other to apply and buff eyeshadow. 6" L. **933-320** reg. \$14 **\$9.59**



fmg Complexion Blending Brush

With a dense, rounded buffing foundation brush on one end and a precise, rounded concealer brush on the other to create a flawless canvas. 6 1/2" L. **933-210** reg. \$21 **\$14.59**



fmg Blush & Contour Brush

With a tapered, oval blush brush on one end and a fluffy, angled contour brush on the other to add color and dimension. 7 1/4" L. **933-259** reg. \$20 **\$13.79**



fmg Precision Eye Brush

With an angled eyeliner brush on one end and a pointed pencil brush on the other to highlight or add depth to eyes. 5 1/4" L. **933-187** reg. \$14 **\$9.59**



BRUSHES WITH GREATNESS

Our best brushes in one go-anywhere set!

MAKEUP



Brush Set includes:

- fmg Kabuki Brush
- fmg Complexion Blending Brush
- fmg Precision Eye Brush
- fmg Eyeshadow Blending Brush
- fmg Blush & Contour Brush

5-PIECE SET

\$29.99

\$85 VALUE

740-523

C21 | 79



GILMER LINERS

Defines eyes perfectly.

fmg Glimmer Eyeliner*

Long-wearing.
Retractable.
Each, .01 oz. net wt.
reg. \$9
\$3.99 each

		
DIAMOND Olive 331-940	DIAMOND Sterling 331-960	DIAMOND Black Ice 331-610
		
DIAMOND Brown Sugar 331-568	DIAMOND Sugar Plum 331-625	DIAMOND Purple Rain 332-071
		
DIAMOND Twilight Sparkle 331-553	DIAMOND Teal Sparkle 331-606	DIAMOND Smoky Diamond 331-280
		
CREAM Blackest Black 334-366	CREAM Cosmic Brown 334-351	CREAM Majestic Plum 334-313
		
CREAM Starry Night 334-347	CREAM Emerald Green 334-332	CREAM Saturn Grey 334-328
		
WATERPROOF Smoky Grey 332-162	WATERPROOF Blackest Night 332-143	WATERPROOF Midnight Blue 332-158
		
WATERPROOF Blue Skies 334-237	WATERPROOF Brown Chocolate 332-124	WATERPROOF Raisin 332-200
		
WATERPROOF Seafoam Green 334-241		

Featured shades:
fmg Glimmer
Diamond Eyeliner in
Sugar Plum and
Teal Sparkle.

Available in
Diamond: Finely milled pearl for a subtle sparkle.
Cream: Soft sheen finish.
Waterproof: Smudge-, transfer-, sweat- and waterproof.

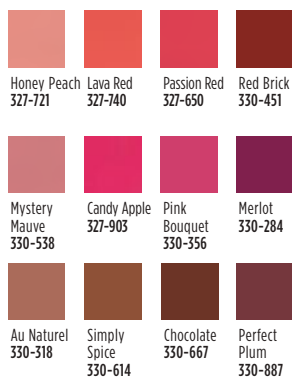
*Packaging may vary.

GLIMMER LINERS



Prevents feathering.

fmg Glimmer Lipliner*
Precise application for sculpted lips. Prevents feathering. Matte finish. .01 oz. net wt. **reg. \$9**
\$3.99



Passion Red
327-650



Unique cap with built-in sharpener!

fmg Glimmer Always On Point Eyeliner*
Smudge- and waterproof. Creamy, smooth formula stays color-true all day. Free from parabens, sulfates and talc. .01 oz. net wt. **reg. \$9**
\$6.79



Black
016-389



Easy-glide, quick-dry precision felt-tip liner delivers rich color with long-lasting wear.

fmg Glimmer Liquid Eyeliner
Matte finish. Removes with ease using soap and water or makeup remover. Transfer-, sweat- and waterproof. .037 fl. oz. **Blackest Black 354-380**
reg. \$12
\$9.99



For natural-looking brows.

fmg Glimmer Brow Definer*
Create fine hair-like strokes. Infused with nourishing castor oil, aiding in hair growth, and coconut oil. Smudge-, transfer-, sweat- and waterproof. Retractable. .01 oz. net wt. **reg. \$9**
\$3.99



Brunette
331-242

GLIMMER SHADOWS



MATTE Tigress
741-333



MATTE Icon
741-439



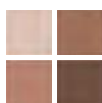
MATTE Bombshell
741-170



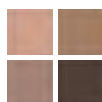
MATTE Calypso
741-261



MULTI Tempress
884-731



MULTI Idol
900-975



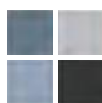
MULTI Maven
884-750



MULTI Siren
901-493



MULTI Mistress
883-902



MULTI Vixen
901-474



MULTI Minx
885-738



MULTI Darling
880-789



MULTI Goddess
901-330



MULTI Muse
880-459

For Multi Quad finishes, visit Avon.com.

Color-coordinated shades work together for expressive eye looks that last all day.

fmg Glimmer Eyeshadow Quad

Creamy soft powder formula hugs lids with rich color for all-day wear, without the fallout. Free from parabens and fragrance. Available in Multi or All Matte. .21 oz. total net wt. **reg. \$15**

\$11.99



MATTE Tigress
741-333



Available in 3 ultrafine pearl finishes: Matte Sateen, Shimmer or Glitter. Packaging may vary.

Vivid stay-all-day shimmery color.

fmg Glimmershadow Liquid Eyeshadow

Long-wearing, no-smudge, no-crease, buildable formula with no messy fallout. Ultrafine pearl finish. Water-resistant. Paraben-, phthalate- and sulfate-free. .07 fl. oz.

reg. \$12

\$8.99

SHIMMER Pink Topaz 479-150



MATTE SATEEN Sunstone
434-015



MATTE SATEEN Citrine
451-120



MATTE SATEEN Pink Sapphire
448-591



MATTE SATEEN Tiger's Eye
500-585



MATTE SATEEN Jasper
500-566



SHIMMER Rose Gold
469-095



SHIMMER Bronze Age
469-100



SHIMMER Crystal Lilac
479-040



SHIMMER Pink Topaz
479-150



GLITTER Diamond Dust
478-866



GLITTER Ultramarine
469-042



GLITTER Fool's Gold
469-076



GLITTER Peach Sapphire
469-057

BROWS + LASHES

Universal clear shade for a professional sculpted look.

fmg Colors of LOVE Hi-Brow Sculpting Brow Gel

Flexible, flake-proof formula. With moisturizing aloe and nourishing hyaluronic acid. Soft matte finish. Tapered micro-brush ensures precise application. Wear alone or over your favorite brow products. Free from parabens, phthalates and fragrance. .11 fl. oz.

Universal Love (Clear)

536-695

reg. \$17

\$12.99



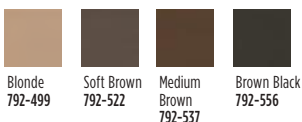
Amp up brows with a sweep of tinted gel for a full, fluffy look.

fmg Colors of LOVE Hi-Brow Tinted Brow Gel

Water-resistant, smudge- and flake-proof formula fills, grooms and shapes for 24-hour wear. With heart-shaped fibers, clay and vitamin E. Soft matte finish. Tapered micro-brush. .11 fl. oz.

reg. \$17

\$12.99



Medium Brown
792-537

Volumizing and lengthening fibers.

LOVE at 1st Lash Mascara*

Transfer-resistant. Clump-, flake- and smudge-proof. Each, .3 fl. oz.

fmg Blackest Black 698-670

Waterproof

Blackest Black

Cobra brush. Not shown.

293-805

reg. \$15

\$12.99 each



Long and healthy.

fmg Glimmer SuperExtend Nourishing Mascara

Enriched with vitamin E, argan and coconut oils. Won't clump, smudge or flake off. Each, .237 fl. oz.

Brown Black 698-852

Black 698-848

reg. \$11

\$8.99



Super volume.

fmg Glimmer SuperShock Volumizing Mascara

Instant high-gloss lushness. .338 fl. oz.

Black 698-829

reg. \$11

\$8.99



Waterproof volume.

fmg Glimmer Wash-Off Waterproof Mascara

Washes off easily with soap and water. .21 oz. net wt.

Black 723-107

reg. \$10

\$7.99



*Packaging may vary.

GLIMMER LIP + NAIL

Enticing and inspiring spectrum of versatile and expressive shades.





























fmg Glimmer Satin Lipstick

Lightweight, smooth and creamy formula. Infused with antioxidant pomegranate extract. Buildable medium-to-full coverage. Soft satin finish.

.10 oz. net wt. **reg. \$11 \$8.49**













Tulip
449-712

 Windstorm 883-845	 Equinox 449-818	 Twilight 449-822	 Sierra Sunset 890-805	 Cyclone 890-566
 Desert Moon 449-803	 Aster 448-769	 Honeyflower 726-531	 Stellar 726-550	 Luna 895-170
 Poppy 897-651	 Songbird 897-647	 Constellation (Shimmer) 449-731	 Blaze 896-880	 Wild Cherry 449-708
 Dahlia 726-350	 Rose Angel 897-939	 Aurora 726-584	 Wildflower 898-040	 Hibiscus 898-021
 Plum Blossom 449-765	 Wildrose 898-533	 Eclipse 448-740	 Tulip 449-712	 Celestial 895-352
		 Morning Glory 449-750	 Violet Night 898-548	 Nova 898-552

Max shine and vivid color for a salon-worthy manicure that lasts!

fmg Glimmer Nail Lacquer

Gel-like cushion texture. Nail-strengthening formula dries smooth and even for lasting wear that does not chip. No UV light needed. Free from parabens, talc, gluten, phthalates and fragrances. .4 fl. oz. **reg. \$10 \$7.99**

 SATIN Black Hole Burgundy 740-648	 SATIN Night Sky Berry 740-629	 SATIN Supernova Red 740-633	 SATIN Lost Galaxy Plum 740-614	 SATIN High Magnitude Mauve 740-781
 SATIN Full Moon Flush 740-671	 SATIN Cool Comet 740-667	 SATIN Lunar Tan 740-652	 METALLIC Meteorite Rose 740-800	 METALLIC Golden Galaxy 740-796



SATIN
Night Sky
Berry
740-629

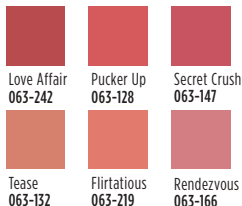
GLIMMER LIP + NAIL

NEW

High shine and sheer color in one!

fmg LOVE Lip Butter

Ultra-creamy formula with cupuaçu seed butter, mango extract and apricot kernel and olive fruit oils, leaves lips feeling soft. Buildable coverage. .09 oz. net wt. **reg. \$17**
\$14.99



Love Affair
063-242



Sugar-based formula gently buffs away dry, flaky skin.

fmg Glimmer Lip Polish

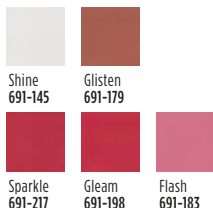
Helps polish and prepare lips for effortless color application. Blend of vitamin E, moisturizing squalane, and extracts of blueberry, strawberry and raspberry leaves lips feeling soft and supple. .35 oz. net wt. **594-677 reg. \$14**
\$10.99



Drench lips in dimensional color and shine.

fmg Glimmer Lip Glaze

Non-sticky creamy formula gives hours of wear without feathering. With antioxidant vitamin E. Buildable sheer-to-medium coverage. .3 fl. oz. **reg. \$11**
\$8.99



Gleam
691-198



Keep your pout soft and kissable!

fmg Glimmer Lip Conditioner

With mango seed butter, vitamin E, and jojoba and sunflower seed oils. Leaves dry, cracked lips feeling soft and smooth. .12 oz. net wt. **794-578 reg. \$12**
\$8.99



Get mistake-free manis at home.

fmg Glimmer Nail Lacquer Eraser Pen

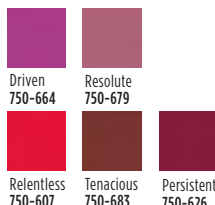
Glide over nail edges after applying nail lacquer for a clean and perfected manicure. .135 fl. oz. **704-443 reg. \$10**
\$7.49



A burst of vivid color with a featherlight feel and velvety soft matte finish.

Mattitude Liquid Lip

Weightless, non-drying formula that lasts for hours. Poppy seed oil and vitamin E nourish lips. .13 fl. oz. **reg. \$13**
\$10.99



Relentless
750-607





Featured shade: fmg Cashmere Essence in Summer Berry.

Good Housekeeping Magazine 2022 Beauty Award Winner

fmg Cashmere Essence Lipcream

Plant-based Bio-Retinol, known for effective anti-aging properties without the harsh irritation, improves lip hydration and protection. With ginseng cell extract, antioxidant meadowfoam seed oil and vitamin E. High-shine finish.

.11 oz. net wt. **reg. \$22 \$18**

Summer Berry 881-766



Day Dreamer 883-773 Cozy Rosy 879-626



Coral Charm 879-148 Honey Mandarin 876-024



Summer Berry 881-766 Plush Peony 873-977



Cherry Rush 876-870



Lush color and shine.

Mauvelous 334-681

fmg Cashmere Rouge Lacquer

High-performance all-day wear. Dual-ended. Full-coverage color dries quickly without feathering. Moisturizing top coat locks color in place for a high-shine finish. Transfer-, smudge- and feather-proof.

.20 oz. total net wt. **reg. \$22 \$18**



Pinkfection 336-919 Ravishing Rose 334-749 Beautifully Bare 334-715



Berry Bliss 336-335 Mauvelous 334-681 Stunning Scarlet 334-825



CASHMERE EYE + BROW

Intense, decadent black shades with dazzling jewel undertones for dramatic results.

fmg Cashmere 24 HR Cream Eyeliner

Comfortable kohl formula with 24-hour wear. Waterproof, matte finish. Smudge applicator to blend. Vegan. Paraben-, phthalate- and fragrance-free. .04 oz. net wt. **reg. \$18**

\$15



Nightfall 565-451 Pitch Black 565-447 After Dark 566-845 Midnight 566-830



Expertly curated 9-shade palettes to create an array of looks.

fmg Cashmere Eyeshadow Palette

Long-wearing creamy powder shadows in satin, matte and sparkling finishes. Crease- and smudge-proof. Talc-, paraben- and fragrance-free. .63 oz. total net wt. **reg. \$40**
\$33 each



Enchanted Eyes 401-440



Essential Eyes 404-745

Smoother, brighter, flawless-looking eyes.

fmg Cashmere Under Eye Primer

Helps concealer wear all day. Infused with caffeine, green tea extract and vegan collagen, to help diminish the appearance of dark circles, puffiness and fine lines. Free from parabens, phthalates and fragrance. .317 oz. net wt.

010-429 reg. \$22

\$18



Fills in brows as it boosts color.

fmg Cashmere 24 Hour Brow Pomade

Smudge-proof, sweat-proof formula. Matte finish. Comes with dual-ended applicator with angled-tip brush and spoolie, 4 1/2" L. .14 oz. net wt.

reg. \$24

\$20

Light Brown 423-705



Blonde 423-710 Light Brown 423-705 Brown 423-356



Ash Brown 423-208 Dark Brown 423-227 Black Brown 423-212



Lash-building primer that visibly lengthens and boosts volume.

fmg Cashmere Eyelash Primer

Nourishing formula keeps lashes looking healthy and strong with biotin and collagen. Maximizes the performance of any mascara for gorgeous, lush lashes. Vegan. Cruelty-free. .35 fl. oz.

948-391 reg. \$22

\$18

Sweep primer on lashes, then apply mascara.



Rich black pigmented formula with extreme staying power.

fmg Cashmere Ultimate Volume Mascara

Leaves lashes feeling soft. Won't budge, smudge or transfer. Triple sphere brush hugs lashes. Removes easily. Vegan. .27 fl. oz.

Rich Black 153-736

reg. \$22

\$18



TPSY

Ultrafine felt tip sculpts, fills and shapes brows and enhances your look to perfection.

TPSY Snatched Brow & Freckle Marker

Long-wearing formula. Free from paraben and talc. .01 oz. net wt. **reg. \$15 \$12**



Espresso Martini
860-420



Irish Cream
549-228



Spiked Macchiato
860-416

Espresso Martini
860-420



Gloss? Balm? Even better!

TPSY Drunk Shiny Lip Oil

A deeply moisturizing lip oil that is instantly absorbed with a tint of color and matches every lip. No hassle. No residue. No stickiness. Infused with jojoba, argan and castor oils. Use alone or over your fave Forever Lip Marker. .13 oz. net wt. **reg. \$15 \$12**



Love Galore
495-197



My Boo
495-216



My Boo
495-216



Get kiss-ready with the perfect partner.

TPSY Forever Lip Marker

Hydrating formula that stays on lips all day. Unique marker design allows for easy application. Kiss-proof. .08 fl. oz. **reg. \$15 \$12**



Crazy Rabbit
495-292



Orange Red
495-311



Felt Pink
495-240



Blackberry Bite
495-364



Sour Candy
495-254

Vegan. Earth-friendly packaging.

Sour Candy
495-254



A drop of glow!

TPSY I Want to Highlight You Liquid Highlighter

Use as a gloss primer and highlighter, or mix into your makeup to customize your shine! Solar Glow Highlighting Complex formula with moisturizing ingredients and ultra-fine pearls for a subtle dewy finish. 1.01 fl. oz. **reg. \$18 \$15**



Savage Glow
495-235



CATHYCAT

Create a sultry cat-eye look with this rich, long-wearing liquid liner.

fmg CathyCat Nine Lives Precision Liquid Eyeliner

Slim-tip brush delivers a precise line of waterproof and sweat-proof color that will not skip, tug or smudge. .068 fl. oz.

Blackest Black
800-829
 reg. \$18
\$14.99



Perfectly designed false lashes add length, dimension and volume.

fmg CathyCat LushLashes

Vegan. Includes one pair of false lashes and glue. Available in two flirty styles! reg. \$11
\$8.99 each



Soft & Sultry
 959-304

Fierce & Flared
 960-050

No-budge, water-resistant lashes, from dawn to dusk.

fmg CathyCat Play All Day Mascara

Long-wearing mascara coats each lash with rich pigments that will not budge or smudge for nine lives of perfect wear. Nourishing formula with a blend of conditioning coconut and argan oils and lash-supporting panthenol. Removes easily with soap and water. .28 oz. net wt.

Blackest Black
904-712
 reg. \$17
\$13.99



Lengthen, curl and captivate!

fmg CathyCat Curl & Flare Mascara

Long-lasting mascara applies evenly. Uniquely curved brush provides major lift, extraordinary curl and impressive length. Nourishing formula with a blend of conditioning coconut and argan oils and lash-supporting panthenol. .28 oz. net wt.

Blackest Black
901-269
 reg. \$17
\$13.99



Take your brow game to new heights!

fmg CathyCat High Arch Precision Brow Pencil

Long-wearing cream-to-powder pencil glides on smoothly, creating a well-defined look. Waterproof formula stays in place without budging or smudging for perfectly gorgeous brows. .01 oz. net wt. reg. \$15

\$11.99



Blonde 837-423
 Light Brown 837-438
 Ash Brown 837-610



Brown 837-442
 Dark Brown 837-605
 Black Brown 837-639



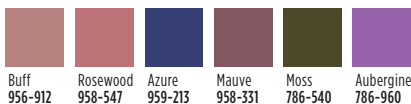
Brown
 837-442

Matte shadow stick colors and defines for all-day play.

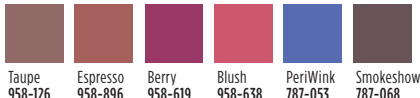
fmg CathyCat Shadow Gaze Matte Color Stick

Comfortable, long-wearing formula provides the perfect amount of playtime for blending and building color intensity. Once the shade sets, it will not budge or smudge. .0476 oz. net wt. reg. \$17

\$13.99



Buff 956-912
 Rosewood 958-547
 Azure 959-213
 Mauve 958-331
 Moss 786-540
 Aubergine 786-960



Taupe 958-126
 Espresso 958-896
 Berry 958-619
 Blush 958-638
 PeriWink 787-053
 Smokeshow 787-068

Rosewood 958-547





NEW

fmg Set & Fix Spray

Lightweight formula controls oil and creates a protective shield, keeping makeup smudge-proof and looking fresh all day. Conditions and smooths skin. Ultrafine mist dries quickly to an invisible finish. Non-greasy, non-sticky. Free from parabens, sulfates, phthalates and silicones. 1.7 fl. oz. **416-707**
reg. \$15
\$9.99



PRO TIP: Spritz your brush with the fmg Set & Fix Spray prior to pressing into eyeshadow to intensify your eye makeup!



KEEP YOUR GORGEOUS GOING

No more makeup meltdowns!
A quick spritz helps set your makeup in place.

MAKEUP MUST-HAVES

fmg Vanity Organizer

Makeup-theme print. Four compartments with two removable inside dividers, three outer pockets and lattice elastic straps. Folds up for easy storage. 9½" L x 6" W x 5" H. Polyester. Imported.

022-816 reg. \$30

\$22.99



fmg Unready Makeup Remover Cloth

Dual-sided cloth makes makeup removal quick and easy. Soft short fibers remove makeup while the longer fibers gently exfoliate the skin. Travel-friendly. 100% polyester. 9¾" sq. Machine wash and dry. Imported.

230-176

reg. \$12

\$9.99



fmg Makeup Remover Wipes

Formulated with antioxidant vitamin E and an extract blend of aloe, chamomile, cucumber, marshmallow root and soothing oat. Leaves skin feeling soft and clean. Fragrance-free. Resealable pack of 24 wipes.

333-867 reg. \$9

\$7.49 each



fmg Oil Rewind Roller Ball

Instantly absorbs oil and grease. Control shine throughout the day without disturbing makeup. Reusable 360° rotating volcanic-stone roller helps to absorb excess oil, leaving skin with a light matte finish. Ideal for touching up makeup on the go. Clean after each use.

1" W x 3" H. Plastic handle, protective cap. Imported. **508-294**

reg. \$16

\$12.99



fmg Moisturizing Eye Makeup Remover Lotion

Cleans, refreshes and moisturizes around the delicate eye area as it whisks away makeup.

2.5 fl. oz.

543-272

reg. \$8

\$5.99



fmg Express Makeup Brush Wash

Contains soothing aloe vera and green tea extract. No leftover residue. Alcohol-free.

1 fl. oz. **141-368**

reg. \$12

\$9.99



fmg Waterproof Lip & Eye Makeup Remover

Dual-layer moisturizing oil and water remover leaves skin fresh and clean. Mineral-, tar-, talc- and paraben-free.

3.7 fl. oz.

352-243

reg. \$12

\$7.99





IT'S YOUR
LIFE
OWN IT



Enjoy special prices and offers with an Avon account or Representative.



NEW**Live Out Loud #4U
Eau de Parfum**
fruity floral

Express yourself with a fresh scent brimming with exuberance.

1.7 fl. oz. **735-968**reg. \$40
\$26.49*Top:* **Juicy Mandarin,**
Pineapple, Bergamot*Mid:* Orange Flower,
Peach Blossom,
Black Currant*Dry:* **Sweet Vanilla,**
Musk, Patchouli**Live Out Loud
Eau de Parfum**
fruity floral

A free-spirited statement of fierce independence and vibrant energy.

1.7 fl. oz. **142-000**reg. \$40
\$26.49*Top:* Juicy Mandarin,
**Sweet Wild
Strawberry,**
Luscious Pear*Mid:* Jasmine Petals,
Honeysuckle,
Sparkling Mimosa*Dry:* Apricot Skin,
Sheer Patchouli,
Fluffy Vanilla**FREE** Avon Classics Night Magic Cologne with any \$30 women's fragrance purchase, pages 92-108. \$18 value. Sold separately on page 107. Limited quantities.

WOMEN'S FRAGRANCE

NEW

Rêve en Cube
Letter from the Stars
Eau de Parfum

fruity floral

Radiant grapefruit,
sweet gardenia
and jasmine.

3.4 fl. oz.

809-238

reg. \$70

\$59



Rêve en Cube
Misty Green Eau de Parfum
soft floral

Bergamot, lily of the valley
and white musk.

3.4 fl. oz.

850-863

reg. \$70

\$59



Ginza Stefany
Wish You Were Here
Eau de Parfum
fruity floral

Sweet hawthorn
berry, ripe pear and
sensual patchouli.

1.69 fl. oz.

405-149

reg. \$40

\$34



Today Eau de Parfum
soft floral

Magnolia blossoms,
hibiscus petals and
silk musk. 1.7 fl. oz.

325-920

reg. \$30

\$26.49

Leaves skin feeling soft,
silky and beautifully scented,
with no greasy residue!

NEW

LIMITED EDITION

Dry Oil Spray

Quickly absorbed lightweight
nourishing oil replenishes
moisture instantly. Use on
damp skin for the perfect
post-shower glow.

Each, 3.25 fl. oz.

reg. \$22

\$17.99 each

Today

soft floral

Magnolia blossoms,
hibiscus petals and
silk musk.

463-886

Avon Prima

amber floral

Delicate plum,
pink rose and
white patchouli.

463-910



FRAGRANCE



A VEIL
OF
LUXURY

Haiku

Haiku
fresh green floral

Top: Japanese Yuzu, Sweet Pomegranate, Summer Pear

Mid: Muguet, Freesia, Tuberose

Dry: Blonde Woods, Soft Musks, Vetiver

Original Eau de Parfum
1.7 fl. oz. **601-030**
reg. \$25
\$18.99

Intense Eau de Parfum
1.7 fl. oz. **097-110**
reg. \$31
\$25.99

Intense Travel Spray
.3 fl. oz. **880-353**
reg. \$16
\$12.99

Hair & Body Mist
3.25 fl. oz. **572-574**
reg. \$16
\$11.99

Intense Luxury Body Crème
5 fl. oz. **806-239**
reg. \$23
\$18.99



HAIKU serene. divine. elegant.

Haiku Sacred Intense
fruity floral

Discover a divine blend of uplifting tangerine, rose de mai and earthy driftwood, balancing the beauty of nature.

Eau de Parfum

1.7 fl. oz.

579-750

reg. \$31

\$25.99

Luxury

Body Crème

5 fl. oz.

580-000

reg. \$23

\$18.99



Haiku Kyoto Flower

fresh green floral

Violet leaf, white peony and soft cotton musk.

Original

Eau de Parfum

1.7 fl. oz.

144-352

reg. \$25

\$18.99

Intense

Eau de Parfum

1.7 fl. oz.

578-811

reg. \$31

\$25.99



Haiku Reflection

Eau de Parfum

fresh green floral

Radiant water accord, acacia blossom and amber wood.

1.7 fl. oz.

617-657

reg. \$25

\$18.99



Far Away

A wanderlust for the exotic.



**Far Away
amber floral****Top:** Bergamot,
Freesia, Peach**Mid:** Jasmine
Absolute,
Ylang-Ylang,
Orange Blossom**Dry:** Vanilla
Absolute, Musk,
Enticing Amber**Original
Eau de Parfum**
1.7 fl. oz.
685-712
reg. \$25
\$18.99**Intense
Eau de Parfum**
1.7 fl. oz.
931-332
reg. \$31
\$25.99**Shimmering
Body Mist**
3.25 fl. oz.
618-945
reg. \$20
\$15.99**Hair & Body Mist**
3.25 fl. oz.
572-536
reg. \$16
\$11.99**Intense Luxury
Body Crème**
5 fl. oz.
806-300
reg. \$23
\$18.99Enjoy special prices and offers with
an Avon account or Representative.



**Far Away Ball
Eau de Parfum**
fruity floral
Sparkling grapefruit,
salted tuberose and
golden amber.
1.7 fl. oz.
451-389
reg. \$25
\$18.99



**Far Away Infinity
Eau de Parfum**
fruity floral
Radiant bergamot,
jasmine sambac and
sensual sandalwood.
1.7 fl. oz.
318-481
reg. \$25
\$18.99



**Far Away Gold
Eau de Parfum**
amber floral
Ylang-ylang,
Indian jasmine and
Madagascar vanilla.
1.7 fl. oz.
685-727
reg. \$25
\$18.99

FRAGRANCE SETS save on all your faves



SET INCLUDES:

Far Away Eau de Parfum *amber floral*

Freesia, sheer jasmine and enticing amber. 1.7 fl. oz.

Far Away Shampoo

11.8 fl. oz.

Haiku Eau de Parfum *fresh green floral*

Japanese yuzu, delicate muguet and blonde woods. 1.7 fl. oz.

3-PIECE SET

\$25.99

\$63 VALUE

995-953



SET INCLUDES:

Far Away Eau de Parfum

1.7 fl. oz.

Far Away Shampoo

11.8 fl. oz.

Haiku Kyoto Flower Eau de Parfum *fresh green floral*

Violet leaf, white peony and soft cotton musk. 1.7 fl. oz.

3-PIECE SET

\$25.99

\$63 VALUE

995-972



SET INCLUDES:

Far Away Eau de Parfum

1.7 fl. oz.

Far Away Shampoo

11.8 fl. oz.

Haiku Reflection Eau de Parfum *fresh green floral*

Radiant water accord, acacia blossom and amber wood. 1.7 fl. oz.

3-PIECE SET

\$25.99

\$63 VALUE

996-065

Far Away Shampoo sold separately on Avon.com.

Rare Pearls
soft floral

*Top: Shimmering Magnolia,
Vibrant Bergamot, Neroli*

*Mid: White Pepper,
Jasmine Petals, Freesia*

*Dry: Creamy Rosewood,
Patchouli, Sandalwood,
Cedarmoss*

Eau de Parfum
1.7 fl. oz. 933-120
reg. \$25
\$18.99

Rare Pearls

Absolutely exquisite



RARE a treasure beyond compare

Rare Gold Intense

Eau de Parfum amber floral

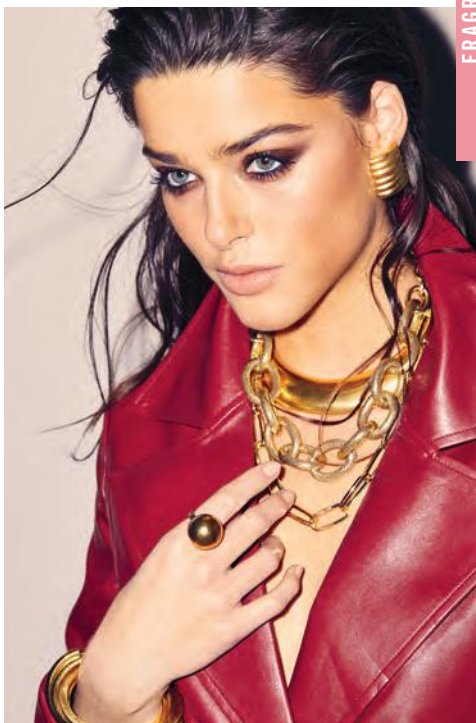
Opulent notes of mandarin zest, ylang-ylang and golden amber.

1.7 fl. oz.

784-126

reg. \$31

\$25.99



Rare Pearls

Hair & Body Mist

soft floral
3.25 fl. oz.

572-851

reg. \$16

\$11.99



Rare Amethyst

Eau de Parfum

fruity floral

Passionate plum, blooming violet and rich sandalwood.

1.7 fl. oz.

933-062

reg. \$25

\$18.99



IMARI AMOR

the first blush of love



Imari Amor
woody floral

Top: Mandarin, Lychee,
Black Currant, Green Notes

Mid: Rose, Jasmine, Neroli,
Ylang-Ylang, **Precious Orris**

Dry: Sandalwood, Amber,
Patchouli, **Warm Musk**

Eau de Parfum
1.7 fl. oz.
762-573
reg. \$25
\$17.99

Imari Seduction
Eau de Toilette
amber floral
1.7 fl. oz.
452-897
reg. \$25
\$18.99

Top: Succulent Plum,
Wild Berries

Mid: Purple Orchid,
Patchouli

Dry: Vanilla Bean,
Amber, Sensual Musk



Imari
Eau de Toilette
amber floral
1.7 fl. oz.
871-496
reg. \$25
\$18.99

Top: Italian Bergamot,
Peach, Iris

Mid: Tempting Jasmine,
Moroccan Rose

Dry: Vanilla Orchid,
Patchouli, Amber

L I V E

Y O U R

D R E A M

**Avon Classics
Dreamlife**
soft floral

A magical blend perfect
for every fantasy.

Top: **Mimosa Flower,**
Hyacinth, Apricot

Mid: **Aspirational Rose,**
Ylang-Ylang, Vanilla

Dry: Patchouli,
Sandalwood,
Glowing Amber

Cologne
1.7 fl. oz. **236-227**
reg. \$18
\$11.99



ALWAYS
BEAUTIFUL

Timeless Cologne
soft floral
Cardamom, jasmine
and patchouli.
1.7 fl. oz.
037-930
reg. \$18
\$11.99



Topaze Cologne
soft floral
Jasmine, rose
and sheer musk.
1.7 fl. oz.
735-217
reg. \$18
\$11.99



Night Magic Cologne
woody floral
Neroli, jasmine
and musk.
1.7 fl. oz.
168-682
reg. \$18
\$11.99



Sweet Honesty Cologne
soft floral
Lily of the valley,
rose and cedarwood.
1.7 fl. oz.
037-595
reg. \$18
\$11.99



Odyssey Cologne
soft floral
Tuberose,
ylang-ylang and
warm oakmoss.
1.7 fl. oz.
168-697
reg. \$18
\$11.99



Free O₂
Eau de Toilette
fresh green floral
White peach tea,
airy honeysuckle
and musk.
1.7 fl. oz.
265-658
reg. \$18
\$11.99



Candid Cologne
amber floral
Bergamot,
tuberose and
patchouli.
1.7 fl. oz.
038-295
reg. \$18
\$11.99



LYRD Artisan Cannabis Oud Eau de Parfum
fresh citrus

Sweet pomelo, rich agarwood and earthy cannabis leaves. Contains .01% of CBD. This eau de parfum does not contain THC.
1.7 fl. oz.
254-544
reg. \$60
\$49



LYRD Oud Rose
woody floral
Spicy saffron, romantic rose and velvety patchouli.

Eau de Parfum
1.7 fl. oz.
954-412
reg. \$38
\$32

Travel Spray
.3 fl. oz.
448-496
reg. \$21
\$17



LYRD Sparkling Neroli Eau de Parfum
fresh citrus

Sparkling neroli, bergamot and warm musk.
1.7 fl. oz.
572-521
reg. \$36
\$29



LYRD Honeysuckle Blossom Eau de Parfum
soft floral

Apple blossom, honeysuckle nectar and vanilla orchid.
1.7 fl. oz.
616-282
reg. \$24
\$20



LYRD Peony Rosé Eau de Parfum
soft floral

Peony petals, pink currant and sheer musk.
1.7 fl. oz.
616-210
reg. \$24
\$20



Seasonal Delights

Get ready for the holidays!
Apple picking, tree trimming
and pumpkin pie, oh my!

NEW

LIMITED EDITION

◆ LYRD Candle

3-wick, 11 oz. candle gives 30 hours of burn time. 4 1/4" diam. x 3 1/8" H. Glass jar, paper dust cover, soy blend wax. Assembled in USA. reg. \$25
\$19.99 each

◆ LYRD Enchanted Snowy Forest Candle

Take a magical walk in a winter wonderland as fresh snow falls and the air fills with notes of frost, pine and smoked woods. **082-069**

◆ LYRD Let's Go Apple Picking! Candle

Family fun time at the apple orchard! Delight in the aroma of cozy cinnamon, juicy red apple and crisp cashmere woods. **082-001**

◆ LYRD Sticky Cinnamon Goodness Candle

Yummy! Fluffy warm dough drizzled with sinfully sweet cinnamon sugar and ooey-gooey golden caramel. **082-020**

◆ LYRD Save Room for Pumpkin Coconut Pie Candle

Did someone say pie? A warm fall hug with notes of shredded coconut, creamy pumpkin puree and sweet vanilla bean extract. **082-054**

Never leave burning candles unattended. Keep away from children and pets.

MESMERIZE captivate at a single glance



Mesmerize Ultimate
Eau de Toilette
woody fougère
Black pepper, zesty pomelo and
sensuous patchouli. 3.4 fl. oz.
897-030 reg. \$36
\$27.99

Mesmerize Platinum
Ultimate Eau de Toilette
woody floral

Crisp pear, violet
and warm amber.
3.4 fl. oz.
179-633
reg. \$36
\$27.99



Mesmerize Platinum
Ultimate Body Moisturizer

6.7 fl. oz.
749-300
reg. \$19
\$14.99



Mesmerize Cologne
fresh aromatic
Bergamot, spicy
cardamom and amber.
3.4 fl. oz.
871-458
reg. \$25
\$18.99



Mesmerize Black
Eau de Toilette
woody fougère
Pepper, addictive nutmeg
and tonka bean.
3.4 fl. oz.
305-667
reg. \$25
\$18.99



FRAGRANCE SETS save on all your faves



SET INCLUDES:

Mesmerize Black Eau de Toilette *woody fougère*

Pepper, addictive nutmeg and tonka bean. 3.4 fl. oz.

Black Suede Eau de Toilette *fresh aromatic*

Fusion of bergamot, soft leather and oak moss. 3.4 fl. oz.

Black Suede Roll-On Anti-Perspirant Deodorant

2.6 fl. oz.

3-PIECE SET
\$19.99

OVER \$50 VALUE
468-797



SET INCLUDES:

Mesmerize Cologne *fresh aromatic*

Bergamot, spicy cardamom and amber. 3.4 fl. oz.

Black Suede Eau de Toilette

3.4 fl. oz.

Black Suede Roll-On Anti-Perspirant Deodorant

2.6 fl. oz.

3-PIECE SET
\$19.99

OVER \$50 VALUE
468-854



SET INCLUDES:

Mesmerize Black Eau de Toilette

3.4 fl. oz.

Mesmerize Cologne

3.4 fl. oz.

Mesmerize Platinum Ultimate Body Moisturizer *woody floral*

Crisp pear, violet and warm amber. 6.7 fl. oz.

3-PIECE SET
\$30.99

\$69 VALUE
161-009

BLACK SUEDE ULTIMATE

EFFORTLESSLY COOL



Black Suede Ultimate
woody fougère
A dynamic blend of lemon, rich lavender and tonka bean.

Eau de Toilette
3.4 fl. oz.
792-412 reg. \$27
\$22.99

Body Moisturizer
6.7 fl. oz. 003-894 reg. \$19
\$14.99

Body Wash
6.7 fl. oz. 003-875 reg. \$19
\$14.99

Black Suede Eau de Toilette
fresh aromatic
Fusion of bergamot, soft leather and oak moss.
3.4 fl. oz.
908-703
reg. \$22
\$14.99



Black Suede Hair & Body Wash
5 fl. oz.
366-318
reg. \$8
\$3.99



Black Suede Aftershave Conditioner
3.4 fl. oz.
367-238
reg. \$8
\$3.99



MEN'S FRAGRANCES

Studio 1886 Gentleman
woody fougère
Dynamic blend of geranium, black pepper and cedarwood.

Eau de Toilette
1.7 fl. oz. **708-750**
reg. \$50
\$39

Aftershave Lotion
6.7 fl. oz. **708-927**
reg. \$16
\$12.99



Studio 1886 Legendary
Eau de Parfum
woody fougère
Vibrant lemon, crisp lavender, patchouli and salted amber.
1.7 fl. oz.
269-820
reg. \$50
\$39



Wild Country Cologne
fresh aromatic
A rugged blend of lavender, coriander seed and sandalwood.
3 fl. oz.
086-466
reg. \$22
\$14.99



Wild Country
Hair & Body Wash
5 fl. oz. **364-080**
reg. \$8
\$3.99



Wild Country
Aftershave Splash
4 fl. oz.
366-432
reg. \$13
\$10.49



Perceive Cologne
fresh aromatic
Sparkling citrus, sage and cedarwood.
3.4 fl. oz.
194-550
reg. \$25
\$18.99



Avon Exploration
Eau de Toilette
fresh aromatic
Fresh orange, silver sage and vetiver.
2.5 fl. oz.
593-666
reg. \$25
\$18.99



SCENTED ESSENTIALS

Avon Classics Hand Cream

Moisturizing formula with jojoba seed oil and vitamin E. Leaves skin lightly scented. Each, 2.5 fl. oz.

Sweet Honesty 234-789

Night Magic 235-440

Timeless 234-740

reg. \$6

\$3.99 each



Body Scrub & Wash

Gentle formula cleanses as it removes rough, dry skin. Skin is refreshed, smooth and beautifully scented. Each, 6.7 fl. oz.

Haiku 143-208

Far Away 143-360

reg. \$12

\$9.99 each



Body Lotion

Luxurious moisturizer leaves skin soft and scented. Each, 6.7 fl. oz.

Far Away 082-881

Rare Pearls 082-915

Haiku 447-820

reg. \$10

\$6.99 each

Creamy softness

Perfumed Skin Softener
Moisturizing formula leaves skin soft and scented.

- Each, 5 fl. oz.
- Haiku **813-973**
- Candid **103-926**
- Far Away **812-981**
- Night Magic
- Evening Musk
- 104-129**
- Odyssey **104-171**
- Sweet Honesty
- 104-463**
- Timeless **104-478**
- Imari **818-239**
- reg. \$8
- \$3.99 each**



Deodorant Stick

All-day freshness in your favorite classic Avon scent! Nourishing formula glides on smoothly without leaving any residue. Lasting odor protection.

- Each, 1 oz. net wt.
- Wild Country 692-012**
- Black Suede 705-602**
- Rare Pearls 727-891**
- Haiku 727-906**
- reg. \$12
- \$9.99 each**

Gentology Herb & Aloe All-Over Wash
For face, hair and body. With aloe and natural herbal extracts.

- 10.1 fl. oz.
- 533-347**
- reg. \$16
- \$13.65**



Bar Soap
Moisturizes as it gently cleanses, leaving skin lightly fragranced.

- Each, 3.17 oz. net wt.
- Black Suede 495-565**
- Wild Country 495-570**
- reg. \$6
- \$3.99 each**



STUDIO
1886

signs of fall

From a brisk breeze
to the soft touch of
satin, colorful leaves
to blooming burgundy
prints...autumn has
arrived in style.

A

A. ♦ Satin Printed Dress

Multicolored floral
printed dress with
V-neck, button detail
down front and slit
on center front hem,
smocked waistband,
 $\frac{3}{4}$ sleeves with
elastic cuff and
zipper on center
back. Lined.
Polyester/spandex/
polyester lining.
Center back length:
50 $\frac{3}{4}$ " on M; 52" on
1X. Machine wash,
line dry. Imported.

XS(0-2) **439-146**

S(4-6) **439-150**

M(8-10) **439-170**

L(12-14) **439-199**

XL(16) **439-203**

1X(18W-20W) **439-218**

2X(22W-24W) **439-222**

3X(26W-28W) **439-237**

reg. **\$56.99**

\$44.99

Model is wearing
Western Bootie,
sold on page 121.



B

2-PACK

B. ♦ 2-Pack Cutout Tops

Includes solid fuchsia and brown long-sleeve tops with cutout detail on chest and right shoulder. Polyester/spandex. Center back length: 25" on M; 27" on 1X. Machine wash, dry flat. Imported.

XS(0-2) 439-241	XL(16) 439-309
S(4-6) 439-256	1X(18W-20W) 439-442
M(8-10) 439-280	2X(22W-24W) 439-457
L(12-14) 439-294	3X(26W-28W) 439-715

reg. \$56.99

\$44.99 pack of 2



C. ♦ Faux-Leather Blazer

Black blazer with peak lapel and one-button closure on front, long sleeves with button detail, slit pockets and back vent. Lined. Polyester/spandex with polyurethane coating/polyester lining. Center back length: 28" on all sizes. Dry clean only. Imported.

XS(0-2) 445-960	XL(16) 448-477
S(4-6) 448-386	1X(18W-20W) 448-921
M(8-10) 448-405	2X(22W-24W) 449-000
L(12-14) 448-462	3X(26W-28W) 449-014

reg. \$74.99

\$59.99

D. ♦ Slim Faux-Suede Pant

Black slim-fitting faux-suede pants with elastic waist. Polyester/spandex. Inseam: 28½" on all sizes. Hand wash, line dry. Imported.

XS(0-2) 450-048	XL(16) 451-450
S(4-6) 450-330	1X(18W-20W) 451-685
M(8-10) 451-360	2X(22W-24W) 451-833
L(12-14) 451-446	3X(26W-28W) 451-852

reg. \$49.99
\$39.99



C

D

Model is wearing Chain Loafer with Charms, sold on page 121.

a love-to- live-in layer

❖ Open-Front Plaid Cardigan

Blue plaid long cardigan with open front and $\frac{3}{4}$ sleeves.

Polyester/spandex. Center back length: 37" on M; 39" on 1X.

Machine wash, line dry. Imported.

XS(0-2) **452-476**

S(4-6) **452-720**

M(8-10) **453-013**

L(12-14) **453-028**

XL(16) **453-051**

1X(18W-20W) **453-324**

2X(22W-24W) **453-362**

3X(26W-28W) **453-506**

reg. **\$56.99**

\$44.99

Model is wearing Slim Faux-Suede Pant, sold on page 117, and Crewneck Tee in Burgundy, sold on page 121.



APPAREL SIZE CHART

SIZE	BUST	WAIST	HIP
XS 0/2	30.5"-32"	23.5"-25"	32.5"-34"
S 4/6	33.5"-36"	26.5"-28"	35.5"-37"
M 8/10	36.5"-38"	29.5"-31"	38.5"-40"
L 12/14	39.5"-41"	32.5"-34"	41.5"-43"
XL 16	43"-44"	35.5"-36.5"	44.5"-45.5"
1X 18W/20W	46.5"-48.5"	39"-41"	48"-50"
2X 22W/24W	50.5"-52.5"	43"-45"	52"-54"
3X 26W/28W	54.5"-56.5"	47"-49"	56"-58"

A fit so easy, for when it's breezy



A. ❖ Button-Front Top

Grey button-front top with functional button placket, chest pockets and long sleeves with tab detail. Polyester/rayon/spandex. Center back length: 26" on M; 28" on 1X. Machine wash, dry flat. Imported.

XS(0-2) 451-867	XL(16) 452-280
S(4-6) 452-040	1X(18W-20W) 452-404
M(8-10) 452-218	2X(22W-24W) 452-438
L(12-14) 452-275	3X(26W-28W) 452-457

reg. \$46.99
\$36.99

B. ❖ Lace Appliqué Blouse

Blue high-crewneck blouse with cutout lace appliqué, button closure on back neck and long cuffed bubble sleeves. Viscose/spandex. Center back length: 25" on M; 26½" on 1X. Machine wash, dry flat. Imported.

XS(0-2) 439-055	XL(16) 439-108
S(4-6) 439-060	1X(18W-20W) 439-112
M(8-10) 439-089	2X(22W-24W) 439-127
L(12-14) 439-093	3X(26W-28W) 439-131

reg. \$58.99
\$46.99

C. ❖ Satin Smocked Blouse

Floral-printed burgundy blouse with split V-neck, small ruffles and tie detail on neckline. Smocking at shoulders and long sleeves with elastic cuffs. Polyester/spandex. Center back length: 25½" on M; 27" on 1X. Machine wash, line dry. Imported.

XS(0-2) 439-720	XL(16) 444-175
S(4-6) 442-995	1X(18W-20W) 444-213
M(8-10) 443-953	2X(22W-24W) 444-505
L(12-14) 444-046	3X(26W-28W) 445-899

reg. \$49.99
\$39.99



the season's signature shade

2-PIECE
SET

satin
collar

satin
pocket

❖ 2-Piece

Wide-Leg Pant Set

Burgundy set includes long-sleeve collared top with contrasting satin button placket and pocket, wide-leg pants with elastic waistband, side seam pockets and satin trim down seams. Body: polyester/spandex. Contrast trim: polyester/spandex. Center back length: 25" on M; 27" on 1X. Inseam: 25" on all sizes. Machine wash, line dry. Imported.

XS(0-2) **455-714**

S(4-6) **455-729**

M(8-10) **455-733**

L(12-14) **455-748**

XL(16) **455-767**

1X(18W-20W) **455-862**

2X(22W-24W) **455-953**

3X(26W-28W) **455-968**

reg. **\$69.99**

\$54.99 2-piece set

satin
trim

Model is wearing
Metallic Slide Sneaker
sold on page 121.

Color-changing leaves...and tees



New and improved fit! Now with crew neck and slight curved hem.

4 - PACK

❖ 4-Pack Crewneck Tees

Includes solid burgundy, fuchsia and grey and printed blue tees with crew neck and slight curved hemline. Cotton/polyester.

Center back length: 25" on M; 27" on 1X. Machine wash, dry flat. Imported.

XS(0-2) 453-946	XL(16) 455-642
S(4-6) 455-547	1X(18W-20W) 455-657
M(8-10) 455-585	2X(22W-24W) 455-661
L(12-14) 455-638	3X(26W-28W) 455-695

reg. \$49.99
\$39.99 pack of 4

❖ Western Bootie*

Faux suede Western-style booties with 2 $\frac{3}{4}$ " block heel and elastic gore on sides for easy on/off. Man-made materials. Half sizes, order size up.

6M 457-190	7M 457-281
8M 457-296	9M 457-300
10M 457-501	11M 457-540

reg. \$64.99
\$49.99



❖ Chain Loafer With Charms*

Black loafers with 1 $\frac{1}{4}$ " block heel, chain and charm detail on upper and wavy cushion insole. Man-made materials. Half sizes, order size up.

reg. \$46.99
\$36.99

6M 456-008
7M 456-543
8M 456-581
9M 456-668
10M 456-816
11M 456-835



❖ Metallic Slide Sneaker*

Slip-on sneaker slides with 1 $\frac{1}{4}$ " platform, elastic gore on upper for easy on/off and cushion insole. Man-made materials. Half sizes, order size up.

6M 456-854
7M 456-869
8M 456-911
9M 456-926
10M 457-004
11M 457-042

reg. \$42.99
\$32.99



*Imported.

PLAYTEX® comfort and smoothing support

Shown:
Toffee.



❖ Playtex® 18 Hour® Original Comfort Strap® Wirefree Bra (4693)

Back closure. Natural latex rubber/polyester/nylon/cotton. Hand wash, line dry. Imported.

White, Natural Beige or Toffee: 36-48B,C; 34-48D,DD; 38-48DDD. **Zen Blue:** 36-42B; 36-44C,D; 38-46DD,DDD. **Sailor Blue:** 36-44C,D; 38-46DD; 44-46DDD. **Black:** 36-48B; 36-54C; 36-50D, 54D; 38-54DD. **reg. \$39**

\$33.99

Shown:
Evening
Nude.



❖ Playtex® Perfectly Smooth® Wirefree Bra (US4707)

Back closure. Lightly lined. Nylon/spandex, polyester lining. Hand wash, line dry. Imported.

White, Nude, Black: 36-42B; 36-44C,D,DD; 36-42DDD. **Evening Blush:** 36-44C,D,DD.

reg. \$46
\$37.99

Shown:
Taupe.



❖ Playtex® Front Close® No Poke Dreamwire™ Bra (US4423)

No pinching. No poking. Just smooth support with wicking Cool Comfort® fabric. Front closure. Nylon/spandex/polyester

Hand wash, line dry. Imported. Sizes: 38-48C,D,DD,DDD (all colors).

reg. \$46
\$36.99

Shown:
Sandshell.



❖ Playtex® Ultra Soft No Poke Dreamwire™ Bra (US4833)

No pinching. No poking. Soft lace with satin neckline and underarm. 4-Way TruSUPPORT® design. Convertible, adjustable straps. Back closure. Lightly lined. Nylon/spandex.

Hand wash, line dry. Imported. Sizes: 38-42B,C,D,DD,DDD; 44C,D,DD,DDD; 46D,DD (all colors). **reg. \$46**

\$36.99

Playtex® is a registered trademark used under license.

COOL & CONFIDENT

NEW

❖ Bali® One Smooth U® Lace Minimizer Underwire Bra (DF3386)

Minimizes up to 1½". Lightweight, breathable lace with sheer inserts. Full coverage. Power mesh provides extra cup support, opacity, back and side smoothing. Adjustable, convertible straps. Hand wash, line dry. Imported. Nylon/spandex. **White, Evening Blush or Black:** 34-42C,D,DD,DDD. **Nightfire Red:** 36-40C,D,DD. reg. \$49 **\$39.99**

Shown: Sandshell.

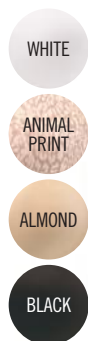


Shown: Almond.



❖ Bali® Comfort Revolution® Soft Touch™ T-Shirt Underwire Bra (DF3468)
Full-coverage. With soft microstretch fabric and flexible foam cups. Cooling and moisture-wicking. Adjustable, convertible straps, back support with back and side smoothing. Hook-and-eye back closure. Nylon/spandex. Hand wash, line dry. Imported. Sizes: 36-40B; 34-42C,D,DD (all colors). reg. \$48 **\$38.99**

Shown: Almond.



❖ Bali® Comfort Revolution® Soft Touch Ultimate® Wirefree Bra (DF3462)
A wirefree bra that shapes and supports with soft-touch fabric. Cooling and moisture-wicking. Adjustable, convertible straps, back support with back and side smoothing. Hook-and-eye back closure. Nylon/spandex. Hand wash, line dry. Imported. Sizes: S,M,L,XL,2XL,3XL (all colors). reg. \$48 **\$38.99**

clean up crew

SAFELY REMOVE TOUGH STAINS



❖ Homestar Cook Top & Stainless Steel Cleaning Wipes

Plant-based surfactants to lift and remove leftover residue and spills from glass cooktops and stainless steel. 50 wipes, each, 10½" x 9½".

149-995
reg. \$9.99
\$7.99

❖ Homestar Rangehood & Kitchen Degreaser

Super-strength formula with a double-solvent solution blend for hard-to-remove grease. External oven use only.

918-150
reg. \$13.99
\$10.99

❖ Homestar Cook Top Cleaner & Polish

Cleans, polishes and protects smooth cooktop ranges for a scratch-free shine. Plant-based formula. Fresh green herbal scent. 7.7 fl. oz.

593-059
reg. \$12.99
\$9.99

❖ **Homestar Multi Purpose Cleaner**

Bleach-free.
With citric acid, orange oil and baking soda. Natural citrus scent.
16.9 fl. oz.
307-507
reg. \$9.99
\$7.99



❖ **Refill**

Spray nozzle not included.
30.4 fl. oz.
700-964
reg. \$11.99
\$8.99

❖ **Homestar Floor Cleaner**

Nozzle provides targeted application to apply directly to floor. Dries quickly for a streak-free shine. Great for laminate, sealed hardwood and sealed stone. Fresh lavender scent. 25.3 fl. oz.
149-980
reg. \$9.99
\$7.99



❖ **Homestar Bathroom Cleaner**

Just spray, let sit and wipe away! Fights tough soap scum, limescale, calcium and grime. Fresh green apple scent. 25.4 fl. oz.
092-635
reg. \$11.99
\$8.99



❖ **Homestar Foaming Toilet Bowl Cleaner**

Fights toilet rings and stains. Includes five pouches. 10.6 oz. total net wt.
090-298
reg. \$12.99
\$9.99



❖ **Homestar Odor Eliminator for Fridge**

No-spill solid gel formula neutralizes fridge odors. Lasts up to 3 months. 14.8 oz. net wt. **793-165**
reg. \$7.99
\$5.99



fresh zone

❖ **Fresh Fiji Sheet Detergent**
 Laundry detergent in a single sheet! Seven-enzyme stain-removing blend. 30 easy-dissolving detergent sheets. Each sheet, 9" x 8".
Lavender
406-092
Fresh
184-203
 reg. \$22.99
\$16.99 each



❖ **Fresh Fiji Hygienic Power Laundry Detergent**
 With Hygienic Power formula to remove dirt you can't see, a stain-fighting solution to brighten and whiten and baking soda to help prevent odors. 25 loads. 33.8 fl. oz. **700-137**
 reg. \$8.99
\$6.99



❖ **Fresh Fiji Hygienic Power Fabric Softener**
 3x concentrated. Softens, freshens and protects clothes. Long-lasting rosewater and jasmine scent. Made with plant-based surfactants. Microplastic-free. Safe for skin and environment. 50 loads. 33.8 fl. oz. **792-355**
 reg. \$7.99
\$5.99



FRESH FIJI

❖ Fresh Fiji Fabric Refresher with Wrinkle Release

Freshens fabrics and smooths wrinkles. Clean laundry scent. 16.9 fl. oz. **322-988** reg. \$11.99 **\$8.99**



❖ Fresh Fiji Gel Beads Deodorizer
Neutralizes odors for up to 70 days. Plastic. 5.29 oz. net wt. **Fresh Cotton 930-188** **Calming Lavender 918-313** reg. \$11.99 **\$8.99 each**



❖ Fresh Fiji Shoe Deodorizer
Eliminates tough odors on contact with the power of baking soda and persimmon. Great for all kinds of shoes, from leather to cotton. 10.1 fl. oz. **322-256** reg. \$9.99 **\$7.99**



❖ Fresh Fiji Car Air Freshener
Clips onto car vents and allows you to control the fragrance intensity. Freshens for up to 50 days. .17 fl. oz. 2 1/4" diam. x 1 1/4" D with 2" L clip. Plastic. Imported. **Orange Blossom 721-472** **White Cotton 721-597** reg. \$7.99 **\$5.99 each**



NO STRONG OR HARSH SYNTHETIC, CHEMICAL FUMES.



❖ Fresh Fiji Hinoki Room Spray
A fine mist to freshen and deodorize every room with the light forest scent of hinoki wood. With natural essential oils. 13.5 fl. oz. **508-309** reg. \$11.99 **\$8.99**

❖ Fresh Fiji Lavender Pillow Spray
A fine mist for pillowcases, linens and bedding with the calming scent of lavender to help promote relaxation of body and mind. With natural essential oils. 13.5 fl. oz. **508-859** reg. \$11.99 **\$8.99**

Safe for most machine-washable fabrics. Dermatologist-tested. Let dry before skin contact. Use in a well-ventilated area. Not for use on skin or pets. Keep out of reach of children.

SKIN SO SOFT Botanical Essence / Original



**Botanical
Essence Bath Oil**
With nourishing
botanical extracts.
Uplifting herbal
scent. 16.2 fl. oz.
027-253
reg. \$31
\$24.99

Original Bath Oil

Hydrates during
or after bath
or shower.
16.9 fl. oz.
439-040
reg. \$24
\$16.99



Original Shower Gel

Gently cleanses
and hydrates.
5 fl. oz.
933-005
reg. \$8
\$5.19



**Bonus-Size
Original
Body Lotion**
33.8 fl. oz.
941-545
reg. \$20
\$13.99



Bonus-Size Original Shower Gel
Gently cleanses and hydrates.
33.8 fl. oz.
170-731
reg. \$18
\$13.99



Original Body Lotion
48 hours of moisture.
11.8 fl. oz.
935-338
reg. \$11
\$7.69



Gelled Body Oil
Dries to a silky finish.
6.76 fl. oz. 930-575
reg. \$13
\$8.69

Bath Oil Spray
Locks in hydration.
5 fl. oz. 194-325 reg. \$14
\$9.29

Bonus-Size Bath Oil
Keeps skin hydrated after bath or shower. 25 fl. oz.
941-253 reg. \$30
\$21.69



Original Replenishing Hand Cream
24+ hours of moisturization.
3.4 fl. oz.
941-268
reg. \$5
\$2.69



Original Beauty Bar Soap
Skin-nourishing bar soap.
Creamy lather. Suitable for daily use on face, body and hands.
3.17 oz. net wt. 543-110
reg. \$4.50
\$3.49



SKIN SO SOFT Soft & Sensual

**Bonus-Size
Soft & Sensual
Shower Gel**
33.8 fl. oz.
171-848
reg. \$18
\$13.99

**Soft & Sensual
Body Lotion**
11.8 fl. oz.
934-312
reg. \$11
\$7.69

**Soft & Sensual
Replenishing
Hand Cream**
3.4 fl. oz.
867-315
reg. \$5
\$2.69

**Bonus-Size
Soft & Sensual
Body Lotion**
33.8 fl. oz.
336-062
reg. \$20
\$13.99



**Bonus-Size
Soft &
Sensual
Bath Oil**
25 fl. oz.
941-110
reg. \$30
\$21.69



**Soft & Sensual
Shower Gel**
5 fl. oz.
435-600
reg. \$8
\$5.19



**Soft & Sensual
Bath Oil**
16.9 fl. oz.
504-614
reg. \$24
\$16.99



**Soft & Sensual
Beauty Bar Soap**
3.17 oz. net wt. 543-215
reg. \$4.50
\$3.49



**Soft &
Sensual
Gelled
Body Oil**
6.76 fl. oz.
908-244
reg. \$13
\$8.69



**Soft & Sensual
Antiperspirant
Deodorant
Roll-On**
2.6 fl. oz.
714-861
reg. \$3.60
\$2.69



SKIN SO SOFT

Radiant Moisture Shower Gel
Gently cleanses and hydrates.
5 fl. oz.
435-777
reg. \$8
\$5.19



Radiant Moisture Replenishing Hand Cream
3.4 fl. oz.
941-272
reg. \$5
\$2.69



Radiant Moisture Bonus-Size Bath Oil
Keeps skin hydrated after bath or shower.
25 fl. oz.
249-788
reg. \$30
\$21.69



Radiant Moisture Bonus-Size Shower Gel
33.8 fl. oz.
171-867
reg. \$18
\$13.99



Radiant Moisture Bonus-Size Body Lotion
33.8 fl. oz.
942-317
reg. \$20
\$13.99



Comforting Shea Bath Oil
16.9 fl. oz.
015-071
reg. \$24
\$16.99



Supreme Nourishment Enriching Coconut Oil Collection
The lasting nourishment of coconut oil.



Supreme Nourishment Bonus-Size Body Lotion
33.8 fl. oz.
945-612
reg. \$20
\$13.99



Body Soufflé
6.7 fl. oz.
479-346
reg. \$16
\$10.49

Lip Balm
Coconut flavor.
.14 oz. net wt.
958-370 reg. \$2
\$1.39

Oil Wash
11.8 fl. oz.
366-380
reg. \$15
\$9.99

LET'S
CLEAR
SOME
THINGS
UP



developed for
all skin types with
gently exfoliating
salicylic acid



Skin So Soft for Acne-Prone Skin

FOR FACE

A. Soothing Spot Gel
Skin looks radiant, even-toned. With rosemary, madecassoside and mint extracts. Leave on, dries clear. .5 fl. oz.
072-721 reg. \$18
\$13.99

B. Foaming Cleanser
With plant-based scrub, rosemary, madecassoside and mint extracts. 5 fl. oz.
041-647 reg. \$17
\$12.99

FOR BODY

C. Soothing Gel
Helps visibly improve tone and texture. Cooling sensation. With glycerin, allantoin and panthenol. Leave on, dries clear. 6.1 fl. oz. **040-636**
reg. \$20
\$15.99

D. Exfoliating Body Wash
Nondrying, nonirritating. With rosemary oil. 10.1 fl. oz. **041-556**
reg. \$20
\$15.99

E. Gentle Body Wash
Nondrying, nonirritating. With rosemary oil. 10.1 fl. oz. **039-325**
reg. \$20
\$15.99

F. Body Pads
Pre-soaked exfoliating cotton pads. Helps even tone. With hyaluronic acid and panthenol. 70 pads. **039-330 reg. \$30**
\$24.99

Suitable for daily use and free of synthetic fragrances.

AVON SENSES Gratitude

❖ A. Candle

1 wick. Soy-wax blend. 3" diam. 3½" H. Burn time, 40 hours. 7 oz. net wt.

504-686

reg. \$23

\$18.99

Place candle on trivet or holder before lighting to protect furniture. Never leave burning candles unattended. Keep away from children and pets.

B. Room Spray

Instantly refresh your home.

3.25 fl. oz.

361-851

reg. \$13

\$10.99

C. Air Diffuser

Six diffuser reeds.

Fragrance oil, 2.37 fl. oz.

504-724

reg. \$30

\$24.99

D. Bath Salts

Pour a handful under warm running water. With sea salt, glycerin and sunflower seed oil. Use 1-3 times a week. 12.5 oz. net wt.

504-557

reg. \$23

\$18.99

E. Shower Steamers

Place one on shower shelf and activate with shower steam (avoid heavy stream of water). Each, 1 oz. net wt.

504-428

reg. \$26

\$20.99

six shower steamers

AVON SENSES GRATITUDE LAVENDER & CEDARWOOD

Fill your space with the calming and soothing scents of lavender and cedarwood.



SENSES Cozy Vanilla & Coconut



A. Body Mist

With aloe vera extract, refreshes and leaves skin feeling soothed.
8 fl. oz.

034-888
reg. \$18
\$14.99

B. Shower Gel

Moisturizing cleanser derived from coconut.
10 fl. oz. **035-190**

reg. \$17
\$13.99

C. Body Lotion

Smooths and softens with moisture-rich shea butter and vitamin E. 8 fl. oz.

035-152 reg. \$17
\$13.99

D. Hand Soap

With moisturizing glycerin, leaves hands feeling clean and soft.

10.1 fl. oz. **852-081**
reg. \$13.99
\$10.99

E. Hand Cream

With shea butter and antioxidants, leaves dry hands feeling buttery smooth.

2.5 fl. oz. **015-029**
reg. \$6
\$4.99

F. Body Scrub

Remove dry, dead skin while shea butter and olive and avocado oils help moisturize.

9 oz. net wt.
530-314 reg. \$22
\$17.99

COZY VANILLA & COCONUT

Envelop yourself in a cozy cloud of comforting vanilla, creamy coconut and calming chamomile.

Free from parabens, mineral oil, silicone, phthalates and dyes.



SENSES Fresh Bergamot / Sparkling Grapefruit



FRESH BERGAMOT & WILD MINT

A fresh bouquet of dewy flowers mixed with spicy bergamot, clean wild mint and luminous solar musk.

Free from parabens, mineral oil, silicone, phthalates and dyes.

Hand Cream
With shea butter and antioxidants.
2.5 fl. oz. **852-498** reg. \$6
\$4.99

Hand Soap
With moisturizing glycerin.
10.1 fl. oz. **852-297** reg. \$13.99
\$10.99

Shower Gel
Coconut-derived cleanser.
10 fl. oz. **034-873**
reg. \$17
\$13.99



SPARKLING GRAPEFRUIT & ORANGE BLOSSOM

A juicy mix of zesty grapefruit, bright orange blossom, delicate honeysuckle and luscious peach.

Hand Cream
With shea butter and antioxidants.
2.5 fl. oz. **852-120** reg. \$6
\$4.99

Hand Soap
With moisturizing glycerin.
10.1 fl. oz. **852-115** reg. \$13.99
\$10.99

Body Mist
With refreshing aloe vera extract.
8 fl. oz. **034-687**
reg. \$18
\$14.99



SENSES Bubble Bath / Shower Gel



Cherry Blossom Bubble Bath
Flirty and sweet.
24 fl. oz.
425-033
reg. \$11
\$8.99



Vanilla Cream Bubble Bath
Rich and creamy.
24 fl. oz.
214-220
reg. \$11
\$8.99



Cucumber Melon Bubble Bath
Fresh and sweet.
24 fl. oz.
688-950
reg. \$11
\$8.99



Orange & Honeysuckle Bubble Bath
Fresh and sunny.
24 fl. oz.
047-808
reg. \$11
\$8.99



Endless Ocean Bubble Bath
Marine and breezy.
24 fl. oz.
425-048
reg. \$11
\$8.99



Lily & Honeysuckle Blossom Bubble Bath
Fragrant and refreshing.
24 fl. oz.
423-394
reg. \$11
\$8.99



Soft Pink Bubble Bath
Lilac and rose.
24 fl. oz.
425-052
reg. \$11
\$8.99



Sensitive Skin Bubble Bath
Chamomile scent.
24 fl. oz.
213-151
reg. \$11
\$8.99



Lavender Garden Bubble Bath
Soft and serene.
24 fl. oz.
424-735
reg. \$11
\$8.99



Blushing Cherry Blossom Hydrating Shower Gel
5 fl. oz.
423-299
reg. \$6
\$3.69



Silky Vanilla Hydrating Shower Gel
5 fl. oz.
462-105
reg. \$6
\$3.69



Fresh Cucumber & Melon Hydrating Shower Gel
5 fl. oz.
462-071
reg. \$6
\$3.69



Juicy Pomegranate & Mango Hydrating Shower Gel
5 fl. oz.
462-139
reg. \$6
\$3.69



Exfoliation Mitt
 Helps remove dead skin, and keeps skin feeling soft and smooth. Microfiber jacquard, with nylon spandex cuff.
439-734 reg. \$11
\$8.99



Body Massager
 Helps stimulate circulation and relieve tension in muscles, especially in back and limbs. Fits into palm for easy control and flexibility with customizable pressure.
439-920 reg. \$11
\$8.99



Smooth Moves Anti-Cellulite Massager
 Use with gel to help firm and smooth skin. Rotating rollers help promote circulation and reduce the appearance of cellulite. Plug-in device. **011-296** reg. \$70
\$62.99



Smooth Moves Anti-Cellulite Cooling Gel
 L-carnitine and chai hu help target fat cells.
 6.7 fl. oz. **722-722 reg. \$21**
\$12.99



Affirm Yourself Firming Body Cream
 Caffeine complex helps skin look more toned.
 6.7 fl. oz. **522-970 reg. \$21**
\$12.99



recharge

NEW

Avon Aromatherapy Body Lotion Bright Day Ahead
 Charge your day with positive energy. With citrus and ginger fragrance oils to uplift your mood.
 5.8 fl. oz.
584-670
 reg. \$17
\$13.99



refresh

NEW

Avon Aromatherapy Body Lotion Bye-Bye Stress
 Take a moment to de-stress. With refreshing spearmint and eucalyptus fragrance oils for stress relief and mental clarity. 5.8 fl. oz.
584-684
 reg. \$17
\$13.99



relax

NEW

Avon Aromatherapy Body Lotion Sleep Tight Zzz
 Unwind after a long day. With rose and lavender fragrance oils to help promote a restful sleep.
 5.8 fl. oz.
584-866
 reg. \$17
\$13.99



Avon Aromatherapy Minding My Mood 4-in-1 Essential Oil Blends
 Natural multipurpose fragrance oils.

Energize With lively mandarin and stimulating ylang-ylang.
Calm With comforting lavender and soothing star anise.

Each, 1.7 fl. oz.
606-376
 reg. \$32
\$25.99
 boxed set of 2



Veilment Lumière Sunless Tanning Serum
 The more drops, the deeper the tan. Color-correcting technology visibly evens tone. Suitable for different skin tones. Antioxidant-rich with skin-nourishing hemp seed oil. Dermatologically tested, hypoallergenic and vegan.
Light/Medium 422-307
Medium/Dark 422-326
 Each, 1.01 fl. oz. reg. \$24
\$19.99 each



MOISTURE THERAPY

Moisture Therapy Calming Relief Hand Cream

With colloidal oatmeal. Relieves the itchiness associated with dry hands. 4.2 fl. oz. **786-349** reg. \$6 **\$2.69**



Moisture Therapy Intensive Healing & Repair Hand Cream

Relieves extremely dry, chapped hands. Fragrance-free. 4.2 fl. oz. **482-937** reg. \$6 **\$2.69**



Extra Strength Cream
24-hour moisturization. Fragrance-free. 5.3 oz. net wt. **772-972** reg. \$8 **\$5.39**



Moisture Therapy Bonus-Size Body Lotions

Each, 33.8 fl. oz. reg. \$20 **\$14.99 each**

Intensive Healing & Repair Body Lotion

72-hour moisture for extra-dry skin. Fragrance-free. **611-644**

Daily Skin Defense Body Lotion

Helps restore moisture to everyday dry skin. **603-028**

Calming Relief Body Lotion

Soothes and relieves dry, itchy skin. Fragrance-free. **611-663**



PHYSIOGEL HYPOALLERGENIC / MICROBIOME

Physiogel Daily Moisture Therapy Dermo-Cleanser for face

Soap-free facial cleanser for dry and sensitive skin.
5 fl. oz. **094-384**
reg. \$24
\$18.99



Physiogel Daily Moisture Therapy Facial Cream*

For normal to dry sensitive skin.
5.1 fl. oz. **847-511**
reg. \$42
\$33.49



*The National Eczema Association has awarded the Seal of Acceptance™ to Physiogel Hypoallergenic Daily Moisture Therapy Facial Cream.



Microbiome Balance + Soothe Body Lotion

Skin looks softer and healthier. 13.2 fl. oz.
438-082 reg. \$25
\$20

Microbiome Balance + Soothe Body Wash

Softens as it gently cleanses. 13.2 fl. oz.
438-078 reg. \$23
\$18

Avon Microbiome by REACH® Hygiene Deodorant Stick

Floral citrus scent. Aluminum-free. 24-hour odor protection.
2.65 oz. net wt. **524-528**
reg. \$13
\$10.99





Veilment CBD Nourishing Body Cream (Tube)

Same formula as original, now in a convenient tube. Skin feels soft, smooth and nourished. Jasmine scent. No THC. 6.7 fl. oz. **254-229** reg. \$38 **\$33**



Veilment CBD Nourishing Body Cream

Skin feels soft, smooth and nourished. Jasmine scent. No THC. 5 fl. oz. **524-513** reg. \$33 **\$29.50**



Veilment Hemp Seed Oil Dry Body Oil

Light, easily absorbed. Helps deeply nourish and hydrate dry and irritated skin. Fragrance-free. Hypoallergenic. 5 fl. oz. **564-106** reg. \$35 **\$28**



Veilment CBD Soothing & Nourishing Body Cream

Concentrated formula. Visibly soothes and smooths. Geranium scent. No THC. 1.7 fl. oz. **524-509** reg. \$33 **\$29.50**



Introducing an innovative exfoliating body wash that cools and refreshes with an ultimate veil of moisture

NEW

Glacial Water Cooling Body Scrub & Cleanser

Fresh Canadian glacial water with gently exfoliating apricot seed, moisturizing ceramides, cooling menthol and a clean peppermint scent. 13.5 fl. oz. **735-399**
reg. \$15
\$13.69



HIMALAYA PINK SALT

Mineral-rich. Calming sage scent.

Exfoliating Soap

Daily body scrub and cleansing bar, with Himalayan pink salt, walnut shell, apricot seed and cranberry powder. 5.3 oz. net wt.
260-440 reg. \$8
\$6

Body Scrub & Cleanser

Himalayan pink salt. 13.5 fl. oz.
708-252 reg. \$15
\$13.69



Dead Sea Salt

Body Scrub & Cleanser
Israeli Dead Sea salt. Energizing citrus-ginger scent. 13.5 fl. oz.
707-988
reg. \$15
\$13.69



Black Rose Body Scrub & Cleanser

French rose oil and apricot-seed powder. Aromatic black rose scent. 13.5 fl. oz.
707-969
reg. \$15
\$13.69





- **protects against** mosquitoes, deer ticks, no-see-ums, sandflies, gnats and biting midges
- **repels deer ticks** that may carry and transmit Lyme disease
- **DEET-free/PABA-free**
- **water-resistant**
- **SPF 28 & SPF 30**

Expedition for all-in-one protection from sun+bugs

BUG GUARD PLUS IR3535® EXPEDITION

No need to wash off.
Dermatologist-tested.

A. Aerosol Spray SPF 28

Repels mosquitoes for 8 hours, deer ticks for 12 hours.
4 oz. net wt.
521-370 reg. \$20
\$14.99

B. Family Size Pump Spray SPF 30

8 fl. oz. 255-259
reg. \$24
\$17.99

C. Pump Spray SPF 30

Repels mosquitoes for 8 hours, deer ticks for 10 hours.
4 fl. oz. 255-278 reg. \$15
\$9.99



Read and follow label directions and precautions.



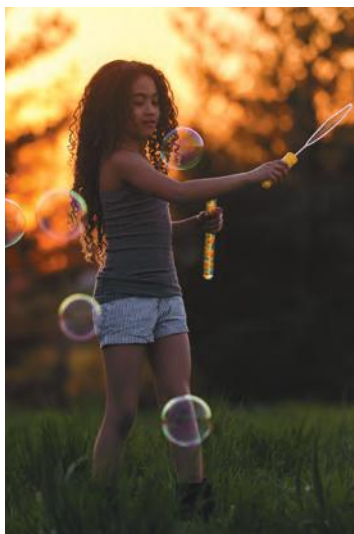
Gentle Breeze protects against sun+bugs+water

- **SPF 30**
- **water-resistant**
- **DEET-free/PABA-free**
- **With vitamin E & aloe**
- **Repels mosquitoes** that may carry and transmit the Zika virus

BUG GUARD PLUS IR3535® GENTLE BREEZE SPF 30 LOTION

No need to wash off.
Dermatologist-tested.
4 fl. oz. 925-819
reg. \$15
\$9.99





- **protects against** mosquitoes, deer ticks, sandflies, no-see-ums, gnats, biting midges and black flies
- **repels deer ticks** that may carry and transmit Lyme disease
- **DEET-free/PABA-free**
- **With vitamin E & aloe**



Anti-Itch Spray*
Provides temporary itch relief from insect bites.
2 fl. oz. 710-775 reg. \$11
\$7.69

*Does not repel insects.

Picaridin for when bugs are most active dawn+dusk



BUG GUARD PLUS PICARIDIN

A. Travel Size Pump Spray
2 fl. oz. 009-600
reg. \$12
\$8.99

B. Pump Spray
Repels mosquitoes for 8 hours, deer ticks for 12 hours. 4 fl. oz.
255-373 reg. \$15
\$9.99

C. Family Size Pump Spray
8 fl. oz. 255-187
reg. \$24
\$17.99

D. Towelettes
Repels mosquitoes for 8 hours, deer ticks for 12 hours. Resealable bag holds 8 packets. Each towelette, 9" L x 5 1/2" W. Each, .3 fl. oz.
269-562 reg. \$16
\$11.69 pack of 8

E. Aerosol Spray**
Repels mosquitoes for 6 hours, deer ticks for 7 hours. 4 oz. net wt.
315-243 reg. \$20
\$14.99

Read and follow label directions and precautions. **Aerosol Spray does not contain aloe.



Avon Shower Brush
 Long handle to easily reach down back. Brush helps to remove dead skin cells as it cleanses. Back of brush features many massage nubs. Non-slip, comfort handle has a convenient hanging hold for easy storing and allows brush to dry quickly.
904-727 reg. \$10
\$7.99

Veilment Care Moisturizing Bar Soap
 Derived from olive oil and infused with coconut oil.
 2.8 oz. net wt.
380-864
 reg. \$2.50
\$1.99



Moisture Therapy Intensive Healing & Repair Moisturizing Lip Treatment Balm
 .14 oz. net wt.
285-117
 reg. \$2
99¢



FMG Flavor Savers Lip Balm
 Vanilla **209-501**
 Melon **209-334**
 Each, .14 oz. net wt.
 reg. \$2
99¢ each



Veilment Care Lip Balm
 Infused with naturally moisturizing jojoba oil and coconut oil to keep lips soft and supple all day. Delicately scented and tinted.
 Cherry **604-168**
 Strawberry **602-720**
 Each, .14 oz. net wt.
 reg. \$2
99¢ each



DEODORANTS

Roll-On Anti-Perspirant Deodorant

Each, 2.6 fl. oz. reg. \$3.60

\$2.69 each



Candid
656-095
Far Away
836-226
Haiku
836-264
Imari
180-887
Rare Gold
836-250
Rare Pearls
836-245
Night
Magic
Evening
Musk
836-298
Odyssey
836-317
Sweet
Honesty
941-579
Timeless
941-583



On Duty
Unscented
926-820
On Duty Sport
094-365
On Duty
Original
393-970
Cool
Confidence
Original
926-777
Cool
Confidence
Baby Powder
926-815
Feelin' Fresh
Original
925-546



Black
Suede
337-403
Mesmerize
663-442
Wild
Country
941-602

**Perfumed
Liquid
Deodorant**
Soft floral
scent.
2 fl. oz.
687-681
reg. \$6
\$4.50



FOOT WORKS

Overnight Renewing Cream

3.4 fl. oz.
295-205
reg. \$9
\$5.99



Deep Moisturizing Cream

2.5 fl. oz.
308-962
reg. \$6
\$4.69



Intensive Moisture Foot Cream

Suitable for diabetics.
2.5 fl. oz.
302-012
reg. \$6
\$4.99



Deodorizing Spray

Can also be used in footwear.
3.5 oz. net wt.
313-236
reg. \$10
\$7.99



Maximum Strength Cracked Heel Cream

2.5 fl. oz.
310-404
reg. \$7
\$5.99



Arthritis Achy Foot and Muscle Cream

2.5 fl. oz.
314-194
reg. \$7
\$5.99



Pedicure Kit

Case, 3 1/2" L x 4 3/4" W.
Metal, man-made materials. Includes: nail clipper, toenail clipper, nail file, scissors, cuticle pusher. 121-029
reg. \$11
\$8.39



Pedicure Tool

4-in-1 tool! Plastic.
3 1/8" L x 1 3/4" W x 1 1/2" H.
Includes: fine-grain file, metal file, pumice, brush. 592-712
reg. \$11
\$8.39



PERIOE HIMALAYA / MICROBIOME / EUTHYMOL

Perioe Himalaya Pink Salt Toothpaste Tube Ice Mint

Pink gel paste with aloe vera essence beads. Fluoride-free. 3.4 oz. net wt. **883-276 reg. \$6 \$5**



Euthymol Toothpaste

Fluoride-free. Strong, unique flavor. With ingredients to keep breath fresh and help remove plaque. Recyclable aluminum vintage tube. 3.7 oz. net wt. **295-406 reg. \$10 \$6.99**



Perioe Microbiome Toothpaste

With fluoride, plus microbiome technology containing prebiotics to help maintain a healthy oral care balance.

Whitening

Helps remove stains and brighten smile while fighting cavities. With charcoal and lemon extract. Cool Mint flavor. 4.1 oz. net wt. **543-287 reg. \$7 \$5.99**



Total Care

Helps fight plaque and cavities, and promotes fresh breath. With charcoal and propolis extract. Strong Mint flavor. 5.4 oz. net wt. **543-268 reg. \$6 \$4.99**



REACH® & LISTERINE® FLOSS always remember to floss!

**REACH®
Unflavored
Waxed Floss**
Accepted by
the American
Dental
Association.
55 yards.
239-317
reg. \$3
\$1.99



REACH® Mint Waxed Floss
*The #1 selling floss
from REACH®.*
Refreshing
mint flavor.
Accepted by
the American
Dental
Association.
55 yards.
239-302
reg. \$3
\$1.99



**LISTERINE®
Cool Mint™
Floss**
Waxed coating
is shred-
resistant. Mint
flavor for the
feeling of
clean, fresh
breath.
55 yards.
239-355
reg. \$5
\$3.99



**LISTERINE®
Ultraclean® Mint Floss**
With patented
MICRO GROOVES®
technology for
greater plaque
removal and
superior
cleaning.
30 yards.
239-321
reg. \$5
\$3.99



**LISTERINE®
Ultraclean® Access® Flosser**
*Long ergonomic handle
with nonslip grip.* Unflavored
floss heads. **239-360** reg. \$6
\$4.79
includes 8 floss heads

**LISTERINE®
Ultraclean® Access® Mint
Flosser Refill**
Disposable mint-flavored
floss heads. For use with
the **LISTERINE®
Ultraclean®
Access® Flosser.**
239-374
reg. \$7
\$5.64
pack of 28

**LISTERINE®
Ultraclean®
Access®
Unflavored
Flosser Refill**
Disposable
unflavored floss
heads. For use
with the
**LISTERINE®
Ultraclean®
Access® Flosser.**
239-393
reg. \$7
\$5.64
pack of 28



REACH® / PERIOE VIBE Dual Sonic Portable Electric Toothbrush

REACH® Interdental Brush

Angled 14°, like dental tools. Helps clean hard-to-reach spots, including back corners. Removes up to 30% more plaque compared to brushing alone! Customized for different spaces between teeth. Specially coated wire for gum protection. Ribbed edge for a better grip.

reg. \$5
\$3.99 each



WIDE
 Pack of 10
630-164

TIGHT
 Pack of 10
630-934

EXTRA TIGHT
 Pack of 10
630-236

REACH® Professional Floss Picks

Acute angle (14°), like dental tools, for better reach. Sturdy pick easily fits between teeth. Dented handle for a better grip. Mint flavor. Pack of 90.

630-179 reg. \$6
\$4.59
 pack of 90



GOOD VIBES TO GO

Perioe Dual Sonic Portable Electric Toothbrush

MICRO AND GENERAL BRISTLES FOR EXCEPTIONAL CLEANING

TWO-MINUTE TIMER WITH 30-SECOND INTERVALS/AUTO OFF FUNCTION

LONG HANDLE COMFORT GRIP

HYGIENIC CAP FOR ON-THE-GO CONVENIENCE!

NEW

❖ Perioe Dual Sonic Portable Electric Toothbrush

Battery powered—great on the go! Adjustable dual mode (strong/gentle). Up to 27,000 vibrations per minute. Four replaceable brush heads. AAA alkaline replaceable battery included. **432-376 reg. \$45**
\$36.99
 4 brush heads



NEW

❖ Perioe Dual Sonic Portable Electric Toothbrush Refillable Heads

Mix of four types of bristles targets different areas: molar, teeth surface, interdental, gum. Replace heads every three months. **433-430 reg. \$12**
\$9.99 includes 2 brush heads



ELASTINE SALON DE COLOR



100% grey coverage and rich, long-lasting color... without ammonia, parabens, mineral oil or benzophenone. For your most luxurious locks and healthy-looking hair. **No appointment necessary.**

Elastine Salon de Color
reg. \$9.99
\$7.99 each



BROWNS

Make faded Brown color vibrant!

4 / Dark Brown 038-568



4B / Dark Chocolate Brown 039-727



5B / Medium Maple Brown 041-723



5CB / Medium Chestnut Brown 040-110



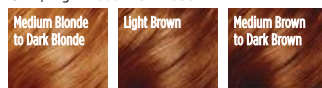
REDS & AUBURNS

Refresh, brighten or deepen color.

4R / Dark Mahogany Red 039-750



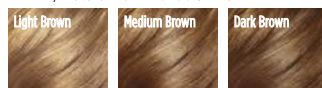
6R / Light Auburn 044-608



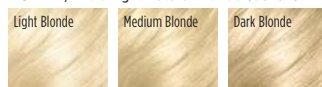
BLONDES

Lighten roots or completely color.

7BL / Natural Dark Blonde 047-827



10BL / Extra Light Natural Blonde 058-620



BLACKS

Make an impact for a dramatic look.

2 / Soft Black 038-553



COLOR VIBE / ROOT TOUCH-UP / ADVANCE TECHNIQUES

HAIR CARE



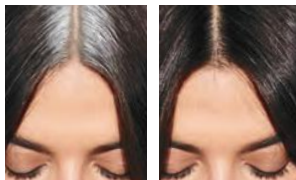
Visibly **repair damaged hair**. Keep it looking **vivid** and **brass-free** with healthy **shine**.

Elastine Salon de Color Color Vibe

Nonirritating formula, suitable for any hair/scalp type. Purple Shampoo **436-109** Purple Conditioner **436-955** Each, 8.4 fl. oz. reg. \$17 **\$13.99 each**



SIMULATION



BEFORE **AFTER**

Root Touch-Up

An instant way to cover up your roots and bare spots. Built-in mirror. Each, .25 oz. net wt. reg. \$18 **\$15.99 each**



- Reddish Brown**
243-627
- Light Brown**
244-642
- Dark Brown**
245-213
- Black**
245-251

Advance Techniques 360 Nourish with Moroccan Argan Oil Leave-In Treatment
Moisturizes dry, damaged hair. Infuses it with instant shine and silky smoothness. 2 fl. oz. **511-411** reg. \$16 **\$11.69**



Advance Techniques Dry Ends Serum
Helps mend and nourish split ends instantly. With pro-vitamin B. Hair looks smooth and silky. 2 fl. oz. **883-261** reg. \$11 **\$7.99**



Advance Techniques Daily Shine 2-in-1 Shampoo & Conditioner
Leaves hair feeling clean, conditioned, and frizz-free. Suitable for daily use. 11.8 fl. oz. **803-230** reg. \$11 **\$8.99**



ELASTINE PROPOLITHERA / BEE CURLY

ELASTINE PROPOLITHERA

Volumizing

Enhances texture so hair looks fuller, thicker, stronger. Each, 16.9 fl. oz.

A. Shampoo

892-607

B. Conditioner

892-870

Damage Repair

Helps hair appear smooth and manageable.

Each, 16.9 fl. oz.

C. Shampoo

053-082

D. Conditioner

638-681

E. Hair Oil Serum

Helps to strengthen, protect, moisturize and smooth hair, and to add shine while styling.

5.7 fl. oz. **895-190**

F. Hair Mask

Enriched with nutrients to help deeply nourish hair and mend damaged split ends.

10.1 fl. oz.

150-301

reg. \$18 each

\$15.99 each



ELASTINE PROPOLITHERA BEE CURLY

A patented technology* that helps care for curly hair to create silky, super-lustrous curls even after the first use.

Shampoo

16.9 fl. oz.

059-975

reg. \$29

\$23.99



Conditioner

16.9 fl. oz.

060-846

reg. \$29

\$23.99



Serum

5.7 fl. oz.

061-565

reg. \$29

\$23.99



*Shampoo and conditioner only.

ELASTINE PROPOLITHERA REJUVENATING styling boosters

Aloe Dual-Active Hair Serum

Intense hydration with vitamins, minerals and other nutrients to bring damaged or chemically processed hair back to life.

3.4 fl. oz.
102-585
 reg. \$30
\$25



Leave-In Conditioner

Hydrates and nourishes dry hair, infusing it with rich luster.

8.1 fl. oz.
102-570
 reg. \$19
\$15



Serum Treatment

Upon contact with water, nutrient-rich, moisturizing liquid visibly transforms into a creamy formula. 7.8 fl. oz.

359-821
 reg. \$22
\$18



Curl Cream

Rich hydration for bouncy, defined curls. Reduces frizz for a smooth, healthy-looking shine. 5 fl. oz.

102-475
 reg. \$19
\$15



Rejuvenating hair treatment for a lustrous-looking shine enriched with **GOLD-Polypeptide Protein Complex** to help repair and strengthen damaged hair and keep it looking silky smooth and voluminous.

NEW

Hair Deep Conditioning Treatment Cap

Nourishing deep-conditioning treatment mask replenishes moisture in one cap application. With the bee goodness of propolis (tree sap and beeswax), honey and royal jelly for healthy-looking body and shine. Berry, rose and peony scent. Use as needed. Single-use cap. 1.4 oz. net wt.

053-761
 reg. \$8
\$6.99



1 After shampooing, remove excess water. Cover all hair with cap.



2 Adjust cap to size of your head.



3 Lightly massage for even absorption of nutrients.



4 Remove cap after 10-15 minutes. Rinse thoroughly.



SPRING IS IN THE HAIR!

Shampoo and conditioner in one, with patented 2-in-1 technology, moisturizes hair while controlling odors so it looks and feels fresh and smooth, with a **fragranced formula** to give it a forever-springtime scent. Free of sulfates and parabens. Suitable for daily use.

Love Me

Jasmine and ylang-ylang. 8.4 fl. oz.
154-857 reg. \$16
\$12.99

Fresh Citrus

Lime, mandarin and basil. 8.4 fl. oz.
154-876 reg. \$16
\$12.99

Pure Breeze

White rose and Bulgarian rose. 8.4 fl. oz.
154-861 reg. \$16
\$12.99

STYLING BRUSH-UP

for all hair types

NEW

**Avon
Detangling
Comb**

Glides through wet or dry hair without tugging or pulling.

504-820
reg. \$5.99
\$4.99



NEW

**Avon
Blow-Dry
Round
Hairbrush**

Smooth and straighten, or curl and wave. Easy, painless styling with comfort handle.

504-800
reg. \$17.99
\$14.99



NEW

**Avon
Detangling
Hairbrush**

Flexible bristles move through knots and tangles and minimize pain and split ends. **504-815**
reg. \$12.99
\$9.99



NEW

**Avon
Compact
Hairbrush**

Pop it in your purse and go. Use on wet or dry hair. **504-743**
reg. \$9.99
\$7.99

CBD / HEMPHARMX / MOISTURE ESSENTIALS

Elastine HempharmX

Shampoo and conditioner with cold-extracted hemp seed oil. Contains omega 3-6-9, known to help moisturize and nourish hair and prevent breakage with weightless hydration that delivers full volume. Vegan formulas. Both silicone-free. Shampoo is sulfate-free.

Hydrating Shampoo
359-836
Hydrating Conditioner
360-544
Each, 13.5 fl. oz.
reg. \$24
\$20 each



Elastine CBD & Hemp Seed Oil Cooling & Soothing Conditioner

Helps moisturize dry hair. Free from parabens and sulfates. No THC.

436-989
11.8 fl. oz.
reg. \$23
\$19



Elastine Moisture Essentials

With richly moisturizing ceramide to help visibly strengthen strands, protect hair from wear and tear, and promote elasticity and shine.

ceramide + biotin

Helps dry, damaged hair look and feel fuller and healthier.

Shampoo 495-106
Conditioner 495-110
Each, 12.7 fl. oz. reg. \$9
\$6.99 each

ceramide + argan oil

Helps moisturize and reduce split ends, and keeps locks looking shiny and smooth.

Shampoo 495-125
Conditioner 495-130
Each, 12.7 fl. oz. reg. \$9
\$6.99 each



want volume?

Rosemary & Sea Salt

With rosemary to help promote thicker hair and scalp health, sea salt to add body.

Volumizing Shampoo 240-556

Volumizing Conditioner 246-831

Each, 6.7 fl. oz.

reg. \$4.50

\$3.79

each



Elastine Botanicals

Infused with revitalizing babassu seed oil, chamomile flower water and lemon chestnut extract, and pH balanced, like healthy hair, it helps bring damaged hair back to life, adding dewy moisture for a smooth, natural-looking sheen.

NO • Parabens • Silicone • Mineral oil
• Triclocarban • Triclosan

dry hair?

Cherry Blossom & Hyaluronic Acid

Moisturize dry, damaged hair with our hyaluronic acid-infused formula as thirsty strands drink it up.

Moisturizing Shampoo 239-943

Moisturizing Conditioner 240-059

Each, 6.7 fl. oz.

reg. \$4.50

\$3.79

each



frizzy hair?

Argan & Castor

With nourishing ingredients, helps protect hair from damage and breakage. Adds luster and smoothness.

Anti-Frizz Shampoo 150-866

Anti-Frizz Conditioner 150-904

Each, 6.7 fl. oz.

reg. \$5.39

\$4.49

each



CHI® ESSENTIALS / CHI® ESSENTIALS REVIVE KERATIN + BONDING

CHI® Essentials Replenishing Shampoo

Gentle daily shampoo with essential vitamins, minerals and amino acids. No sulfates or parabens, so it won't strip hair of natural oils. Safe for color-treated hair.

12 fl. oz.
589-140
reg. \$20
\$16.99



CHI® Essentials Moisturizing Conditioner

Lightweight daily conditioner. Infused with aloe to lock in rich moisture. With vitamins A and B to help strengthen hair from roots to ends, increase elasticity and help smooth split ends and frizz.

12 fl. oz.
589-409
reg. \$20
\$16.99



CHI® Essentials Repairing Serum

Deeply penetrating-yet-lightweight serum helps strengthen, protect, moisturize and smooth. With vitamin A to help seal split ends, and rosemary to help boost volume and shine.

6 fl. oz. 589-413
reg. \$33
\$27.59



CHI® Essentials Revive Keratin + Bonding Restoring Shampoo

Cleanses, moisturizes and protects against split ends and frizz.

12 fl. oz. 451-192
reg. \$25
\$19.99

CHI® Essentials Revive Keratin + Bonding Protecting Serum

Apply to damp or dry hair for smoothness and shine, and as a hair shield from the sun.

3 fl. oz. 451-340
reg. \$42
\$34.99

CHI® Essentials Revive Keratin + Bonding Restoring Conditioner

Helps restore dry, damaged and brittle hair.

12 fl. oz. 451-211
reg. \$25
\$19.99



CHI® PRO STYLERS & TOOLS for salon-quality results

CHI® ENVIRO 54®

Natural Hold Hair Spray

For brushable hold. Lightweight. Fast-drying. No build-up. Anti-humidity. Thermal protectant for blow-drying. With silk to help build hair's strength and resilience, and natural botanicals to add volume and enhance shine. Paraben-free. 10 oz. net wt.

908-450
reg. \$26.50
\$21.50



BioSilk® Silk Therapy®

Replenishes and reconstructs to help repair and protect all hair types. Tames frizz and flyaways and leaves hair silky smooth with reflective shine. Helps shield hair from UV rays, heat and humidity. 5.64 fl. oz.

011-349
reg. \$35
\$28.99



CHI® 1\"/>

Ceramic Pro Spin 'n' Curl
Preset temperature controls with adjustable timers and LED screen display. For any hair type. 12\"/>

Use only as directed.
471-527
reg. \$199
\$179

ATTACHMENTS INCLUDED



CHI® Advanced Ionic Compact Hair Dryer

Powerful 1875-watt ion generator emits negative ions to reduce drying time. Lightweight, compact design. Rapid Clean Technology with Blue LED light for cleaner air during styling. Adjustable heat and air-speed settings. Removable filter. 6½ ft. cord. Use only as directed. **471-474 reg. \$150**

\$135



DR. GROOT your solution to thinning hair and anti-dandruff

Scalp Fortifying Serum Treatment

Moisturizes and helps support healthy hair roots and growth. 6.7 fl. oz. **782-271** reg. \$35 **\$29**



Scalp Fortifying Hair-Thickening Shampoo

With coconut oil, cleanses as it helps moisturize dry scalp and hair. 13.5 fl. oz. **778-014** reg. \$35 **\$29**



Premium Scalp Cleansing Brush

Helps promote cleansing of residue while massaging to reinvigorate health of scalp as it helps to stimulate circulation. **065-776** reg. \$19 **\$16**



KEEP SCALP AND HAIR FLAKE-FREE

Anti-Dandruff Scalp Care Shampoo
No silicones. 10.1 fl. oz. **451-412** reg. \$27 **\$21.99**

Anti-Dandruff Scalp Care 2-in-1 Shampoo and Conditioner
10.1 fl. oz. **451-431** reg. \$27 **\$21.99**



cover grey the natural way in 3 weeks

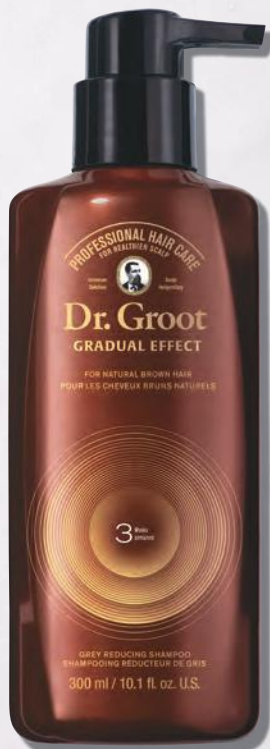
This hair-darkening shampoo and conditioner **darken grey hair gradually** while they **nourish your scalp and hair** with **hydrolyzed collagen** and **biotin**.

Dr. Groot Gradual Effect for Natural Brown Hair

Patented color-bonding technology, formulated with gentle, nonirritating ingredients derived from safflower and gardenia, known to visibly relieve hair-loss symptoms. Leaves hair with lasting natural color. For best results, use shampoo and conditioner together. Dermatologist-tested.

Shampoo
10.1 fl. oz. **740-432**
reg. \$41
\$34

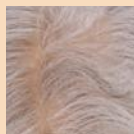
Conditioner
5.1 fl. oz. **740-447**
reg. \$22
\$18



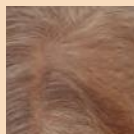
KEY BENEFITS

- lifts hair volume from roots
- with gentle ingredients derived from safflower and gardenia known to visibly relieve hair-loss symptoms
- nonirritating formula with no harmful chemicals
- darkens grey hair into a natural brown gradually in **three weeks!***

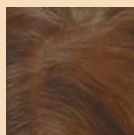
BEFORE & AFTER



before



after 1 week use



after 2 weeks use

*Results may vary depending on how much grey hair you start with and the frequency of use.

HOW TO USE

1. Apply shampoo to wet hair and massage from roots to ends.
2. Leave for three minutes.
3. Rinse off until water gets clear.
4. Apply conditioner to wet hair.
5. Leave for three minutes.
6. Rinse off until water gets clear.

THE WOW DEAL

**5-PIECE SET
ONLY \$40**

OVER \$117 VALUE
749-918

REJUVENATE AND PAMPER
YOUR SKIN AND HAIR.

COLLECTION INCLUDES:

**Isa Knox LXNEW Ultimate
Rejuvenating Day Cream**
1.7 fl. oz.
\$50 value

**Isa Knox Anew Clinical
Revitalize & Reveal
Resurfacing Lotion for Body**
5 fl. oz.
\$34 value

**Rice Water Bright Gentle
Exfoliating Foaming Cleanser**
10.1 fl. oz.
\$15.99 value

**Elastine
Moisture Essentials
Moroccan Argan Oil
Shine Hair Oil Serum**
2.54 fl. oz.
\$9 value

**Elastine
Moisture Essentials
Ceramide & Argan Oil
Shine Shampoo**
12.7 fl. oz.
\$9 value



Enjoy special prices and offers with an Avon account or Representative.

© 2023 The Avon Company. All rights reserved.

CAMPAIGN 21, 2023
THE AVON COMPANY
165 BROADWAY, NY, NY 10006

To place an order, call:



Brochure effective until _____

Find me at www.avon.com/repstore/ _____



Not applicable in
Puerto Rico or
the Caribbean.



See our commitment at
www.avon.com/animal-welfare

RETURN POLICY If you are not satisfied, return any item within 45 days. View Avon's full 45-Day Return Policy at avon.com/shipping-returns.