

# 2014 ANNUAL REPORT



2014 marked my first full year as President and CEO of World Hope International (WHI) after taking on the role in September 2013, and I am pleased to report that it was a very blessed 12 months.

In reflecting on 2014, I am reminded of how much WHI, its staff and donors consistently open their hands to those in the spirit of Deuteronomy 15:11, *“Since there will never cease to be some in need on the earth, I therefore command you, ‘Open your hand to the poor and needy neighbor in your land.’”*

From Ebola efforts to agriculture and water and sanitation, WHI extended its hand and its heart in 2014 to positively impact the lives of more than 150,000 people.

As you may recall, the Ebola epidemic — the largest in history — made headlines in 2014 and WHI was heavily involved with response efforts. Specifically, we helped to fight Ebola in Sierra Leone by providing clean water and sanitation to eight different Ebola treatment centers and by rehabilitating water systems at two Ebola Centers. We also trained approximately 750 Community Health Workers to identify symptoms and treat Ebola. In addition, we provided eight new ambulances to help transport Ebola and non-Ebola related cases to hospitals. Finally, we managed 15 new Community Care Centers in the Bombali District — one of Sierra Leone’s worst-hit districts.

In addition to fighting Ebola, WHI played an integral role in improving agriculture in key areas of the world. One of our major accomplishments was the launch of a low-cost greenhouse technology program in partnership with Penn State University under a grant from USAID. These Greenhouses provide farmers in Sierra Leone and Mozambique with the ability to cultivate crops year-round thereby guaranteeing them greater food security as crops are not susceptible to rain/dry season.

In terms of our water and sanitation efforts, we drilled 57 new wells and provided fresh water for nine Ebola care centers, benefitting nearly 25,000 people in Sierra Leone and Mozambique. We also continued to make great strides in our health and nutrition programs by conducting hygiene training for nearly 4,000 people living in extreme poverty and by providing food, cleaning supplies and Ebola education materials to approximately 1,740 people.

I want to personally thank each of our donors not only for their selfless contributions but also for their heartfelt prayers. It would be impossible for us to fulfill our mission of working with vulnerable and exploited communities to alleviate poverty, suffering and worldwide injustices without the endearing commitment of our staff and donors.

Thanks to donor support, we were able to solidify our global footprint in 2014 by providing on-the-ground support in places like Sierra Leone, Nepal, Mozambique, Liberia and more. Help us make next year even more impactful for those less fortunate by signing up for our newsletter or following us on Facebook or Twitter.

In His Service,



John Lyon  
CEO & President





# 2014 IMPACT

## A Snapshot



### Agriculture

- In Sierra Leone, helped more than **5000 small holder farmers** supply **224,917 kg of mangoes** to Africa Felix Juice, helping these small holder farmers earn income on a product that would otherwise have been wasted post harvest.
- In Sierra Leone, helped **748 small holder farmers** learn how to grow **37 acres (675,000 plants) of commercial-scale pineapples** for sale to Africa Felix Juice and local markets.
- In Mozambique, formed **8 new cattle groups** distributing **72 heifers** and **8 bulls** and conducted **2 village vet workshops** training **19 participants**. **871 head of cattle** were treated.
- In partnership with Penn State's Humanitarian Engineering and Social Entrepreneurship Program (PSU-HESE), introduced low-cost greenhouse technology to small holder farmers in Sierra Leone and Mozambique.

### Rural & Economic Development

- In Mozambique, **3 community gardens** were planted at WHI wells
- In Sierra Leone, completed **6 of 11 village partnerships** which provided capacity building for local leadership development, seed loans, grain stores, animal multiplication, drying floors, water and sanitation facilities and health and hygiene training for approximately **3,899 people** living in extreme poverty.
- Through the Adelpe program, created village development groups, mobilizing the community in socio-economic development. Promoted integrated and sustainable farming systems, rural credit, home gardening, animal husbandry and livelihood activities at the household level.
- Constructed **3 school toilets** serving a total of **2,000 students** in Mozambique.
- Completed a 5 year village partnership program in Mozambique with the village of Marambajane.

### Education

- In Philippines, opened a high school in the Bla'an tribal community to provide education for grades 8-10 for **80 students**.
- Rehabilitated Maselleh Primary School in Sierra Leone.
- Constructed a school in Katherie benefitting **300 students**.
- Renovated **2 schools** in Bosnia.
- Conducted **7 English clubs and classes** in Bosnia with **80 students** participating.
- In Azerbaijan, trained **30 students** in the office in computer skills. Educated **462 students** in computers off-site.
- **320 students** were impacted by English language training in Azerbaijan.



### Child Sponsorship

- In the Philippines, provided access to education and food to **87 children** in four tribal communities.
- In India, provided educational supplies, tuition, and shoes to **34 children**.
- In Haiti, provided tuition and food assistance to **169 students**.
- In Indonesia, provided tuition assistance to **33 students**.
- In Nepal, provided tuition assistance, food, and medical care to **95 children**.
- In Sri Lanka, provided tuition assistance and educational supplies to **46 students**.
- In Sierra Leone, provided tuition assistance, food support, and school supplies to **290 children** for the first half of the year. Provided food and relief support along with cleaning supplies and information about Ebola to **290 families, approximately 1,740 people**.

### Health & Nutrition

- Established over **1656 new Mother Support Groups** in Sierra Leone to promote child nutrition, exclusive breastfeeding, infant and child care and health education.
- Provided medical supplies and pharmaceuticals to several hospitals in Sierra Leone.
- In Sierra Leone, trained **750 Community Health Workers** to identify and refer people with one of a number of non-communicable diseases for treatment.

### Anti-Trafficking

- Served **37 survivors** at the Recovery Centre in Sierra Leone, plus **3 babies and 1 mother**. Provided case management services to **10 survivors** outside of the RC.
- Reintegrated **14 survivors and 1 baby** of a survivor with their families.
- Maintained **58 Village Parent Groups (VPGs)** throughout Sierra Leone
- Served **86 clients** at the WHI Assessment Center for Survivors of Sexual Exploitation and Rape in Cambodia.
- Reintegrated **22 survivors** with their families. Transferred **46 cases** to partner agencies.
- In Azerbaijan, distributed gift packs containing our anti-human trafficking flyer to **660 students** (grades 1-11), and educated **52 high school students** about the dangers of human trafficking.

### Water/Sanitation

- Drilled **57 wells** in Sierra Leone and Mozambique (**8** at Ebola Treatment Centers in Sierra Leone).
- Constructed **6 towers** for gravity fed water systems.
- Rehabilitated the water systems at **2 Ebola centers**.
- Constructed toilets at **3 schools** in Mozambique.
- Began to drill clean water wells, distribute water filters and provide basic sanitation and hygiene education and services in Peru.





## Emergency Response

### Ebola Response

- Constructed and managed **15 new Community Care Centers (CCCs)** in Bombali District – one of Sierra Leone’s worst-hit districts. The CCCs triaged **1,980 patients**, admitted **310** and cared for **50 Ebola positive cases**.
- Due to Ebola prevention sensitization and CCC utilization, **411 people** from Bombali have survived Ebola.
- In partnership with the Wesleyan Church, set-up an isolation facility at Kamakwie Hospital in Bombali District and sent a health care team there to train staff and provide medical supplies.
- Trained health workers on everything from dressing in their Personal Protective Equipment to proper handling and burials of those who have died.
- In Makeni, oversaw the retrofitting at a Paramedical Holding Center making safe isolation possible. Trained staffs are able to provide adequate clinical management and infection control processes.
- Conducted house-to-house visits in cooperation with the government of Sierra Leone during a three-day lock down in September that entailed searching for Ebola patients, distributing medical supplies and providing information about Ebola.
- With our partners, trained approximately **750 Community Health Workers** to help identify symptoms and treat Ebola.
- Worked with the Makeni Government Maternity Ward to improve its Infection Prevention and Control (IPC) and to provide safe care for women and neonates and improve the facility’s water supply.
- Transformed **two of our trucks into ambulances**, and have purchased **8 more ambulances** that were recently shipped to Sierra Leone.
- Purchased **8 new ambulances** that are transporting Ebola and non-Ebola related cases, including transporting mothers to hospitals for delivery.
- Assisted with the distribution of airlifted medical supplies to hospitals and clinics and escorted experts, such as the CDC, to conduct assessments of the region.
- Provided borehole water wells and sanitation facilities for Ebola treatment centers using our experienced Water and Sanitation team. The drills can complete both mud and rock drilling, which allows us to drill anywhere in Sierra Leone.
- Helped to maintain, survey, and enhance existing water wells at Ebola centers to reliably support patient and medical staff needs.
- Drilled a new water well for a 48-bed Red Cross Ebola Treatment Center located in Kono District.
- With support from NetHope and in partnership with EveryLayer, helped to build Internet connectivity for the first time in the region, focusing on connecting clinics, the District Ebola Response Committee office, and the Makeni Regional Government Hospital. The grant also provided funding for 20 tablets.
- Provided rain pavilions for checkpoints and hand-washing stations to communities in need.

### Bosnia Flood

- Provided **2 loads** of emergency supplies to people affected by the flooding in Bosnia. **3 families** received assistance with home repairs.

## 2014 CONSOLIDATED FINANCIAL SUMMARY

For the Year Ended December 31, 2014

World Hope International is a 501(c)3 charitable organization committed to maintaining the highest standards of fiscal responsibility, accountability and transparency. The complete audited financial statements are available at [www.worldhope.org/finances](http://www.worldhope.org/finances).

### REVENUE AND SUPPORT

	TOTAL (USD)
Contributions	\$7,294,747
Federal & international grants	1,160,004
Program income	68,580
Other income	63,800
<b>TOTAL</b>	<b>\$8,587,131</b>

### EXPENSES

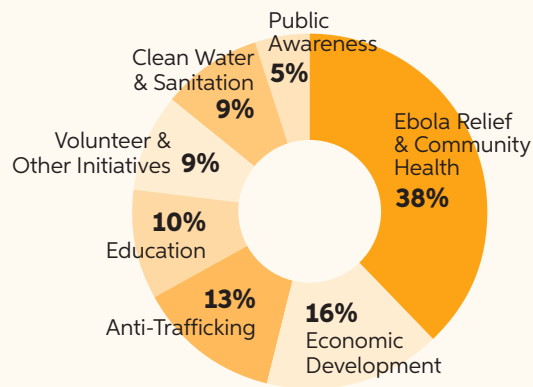
Program Operations	\$7,383,835
General and Administrative	489,422
Fundraising	526,193
<b>TOTAL</b>	<b>8,399,450</b>
 Net non-operating activity	 (83,377)
 Change in net assets	 104,304
 Total year-end net assets	 <u>\$3,153,745</u>

### ACCOUNTABILITY: Evangelical Council for Financial Accountability

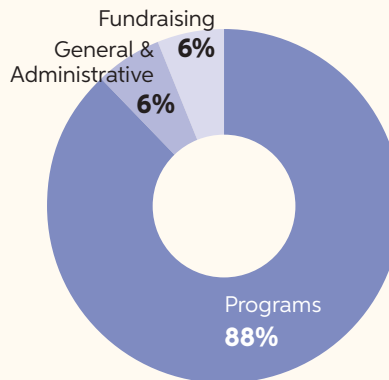


WHI is a member of ECFA, meeting its strict standards for fiscal integrity and sound financial practices.

### PROGRAM EXPENSES:



### ALLOCATION OF EXPENSES:



### EXECUTIVE LEADERSHIP

John Lyon, President & CEO  
 Gayle Rietmulder, Vice President of Finance/  
 Chief Financial Officer  
 Dr. Alison Padgett, Vice President of Programs

### BOARD OF DIRECTORS

Dr. Evvy Hay Campbell, Chair – Associate Professor Emerita at Wheaton College  
 Mike Chambers, Vice Chair – Owner and Manager of Frontier Enterprises  
 Kevin Batman, Treasurer – General Treasurer for The Wesleyan Church World Headquarters  
 Bobbie Strand, Secretary – President, Strand Resources  
 Dr. David Blanchard – Retired, Space Missions Systems Division of Lockheed Martin  
 Steve Brown – CEO and President of Bullen Ultrasonics, Inc.  
 Dr. Daniel Chamberlain – President Emeritus at Houghton College  
 Robert Clyde – Retired, AIG Japan/Korea  
 Stephanie Gilmer – Executive Director of World Hope Canada  
 Dennis Jackson – General Director of Global Partners, The Wesleyan Church  
 John Lee – Retired, Praxair Corporation  
 JoAnne Lyon – General Superintendent of The Wesleyan Church  
 Steve McEuen – Lead Pastor, Victory Highway Wesleyan Church  
 Connie Ott – The Ott Foundation  
 Jeri Sape – Attorney, DBF Associates (New York)  
 Gary St. John – Principal and Consultant, Gary St. John Management Consulting LLC  
 Jeff Swartzendruber – President, Image Pointe

In order to maintain WHI's high standards of excellence in our program operations, we demand the best in every area of our work — from the staff we hire to the technology we invest in to the fundraising we use to educate and inspire to action. Investing in expenses outside of programs serves to hold our programs and global staff accountable, blaze the path towards better development, and funnel as many resources as possible into our work on the ground.

Unlike some philosophies on development, WHI avoids investing in programs simply based on overhead cost. Our priority is highly effective, sustainable and sensible community-based programs. We ensure every dollar is used to bring maximum impact and opportunity to those we serve.

## 2014-2015 Gifts & Memorials

World Hope International is proud to serve the poor, vulnerable and exploited in honor or memory of your loved ones. The following names reflect gifts and memorials made from January 2014 until June 2015.

### In Celebration of ...

**ALEXANDRA ALMAGUER** by Home Room Parent for H8  
**THE ARNOLD FAMILY** by The Arnold Family  
**TIM BEATTY** by Lynn Roos  
**MARLA BUMGARDNER** by Heather Cauthren  
**NORA BRITTON** by Amy Britton  
**VIRGINIA BUHROW** by William Buhrow  
**CARRIE JO CAIN** by Lawrence Kinde  
**CALEB** by Kathryn Schaefer  
**CATHY CHUNG** by Melaina Raburn  
**LAURA & MARK COLLINS** by Jolene Moore  
**MY FAMILY AT CHRISTMAS TIME – MOM & DAD H, JUDY JOYCE, K&R, M&B, A&D, MOM & DAD G** by Deborah Heilemann  
**JACK & ANNE GRIFFIN** by Second Story Homes  
**PETER & DEBBIE HEILEMANN** by Judith Babel  
**THE EARL HERTZOG, III FAMILY** by Mr. Earl & Mrs. Hertzog  
**BERNADETTE HLAS** by Maria Hillard  
**SHIRLEY HOUSTON** by Maureen Harlan  
**JESUS CHRIST** by Richard Swartz  
**JOANNE JONES** by Kimberly Ouderkirk  
**BENJAMIN LYON** by Bruce Allison  
**JOHN LYON** by Elizabeth Allison, Nichole Noel  
**JIM & ELIZABETH MEEHAN 37TH WEDDING ANNIVERSARY** by Elizabeth Meehan  
**MOTHER'S DAY** by Harold Gunsalus  
**BETHANY, AJ, RACHEL, DAVID NATHAN** by Bethany, AJ, Rachel & David Nathan  
**ARETHA ROGERS** by Heather Cauthren  
**THE SMELTZER FAMILY** by The Smeltzer Family  
**ERIN STEPHENS** by Diane Dekker  
**THE SULFARE FAMILY** by The Sulfare Family  
**JOYCE URWIN** by Caroline Mudge  
**HAVILAH WINGFIELD** by David Wingfield  
**THE YOUNGKIN FAMILY** by The Youngkin Family

### In Honor of ...

**CORALYN ABELL** by Mark Abell  
**JACKIE ALBERTSON** by Steven Albertson  
**LINDY ARCHAMBAULT** by Janet Kippenberger  
**KATHY ASHER** by Janet Kippenberger  
**ALAN & JACQUIE AUFFHAMMER** by Stacy Ober  
**MARTHA BAILY** by Heather Cooper  
**DAVID & ALLENE BLANCHARD** by David Jr. Blanchard

**MRS. EVVY HAY CAMPBELL** by Bill Wright, Sasha Brady  
**KAREN CARTER, DICK & CANDY COULTER, JOHN & PHYLLIS ENGELMAN, GEORGE & CATHY HUCKS** by Amber R. Coulter  
**BENJI COWART** by Dawn DelPrince  
**TOWANA CRANOR** by Lacey Moore  
**BECKY ENDERS** by David C. Enders  
**GARY ENDERS** by David C. Enders  
**MARIE EVATT** by Robert Evatt  
**MARILYN FREEMAN** by Veronica Alderman  
**DAVID & CINDY GOLDBERG** by Second Story Homes  
**JACK & ANNE GRIFFIN** by Second Story Homes  
**LEON HARRIS** by Sylvia Hutchinson  
**MOM & DAD HEILEMANN** by Deborah Heilemann  
**PETER & DEBBIE HEILEMANN** by Bruce & Michelle Bradford  
**MARYLYNN HOLDERREAD FAMILY** by Marylynn Holderread  
**TYLER & SARAH HOUSE** by Jaimie Cartwright  
**JESUS CHRIST** by Vadim Asiryran, Eliud Pinero, Jr.  
**STEVE & SHERYL HOVAN** by Kevin Hovan  
**SAIDU KANU** by Gregory Bish  
**CHRISTIAN KARIUM** by Clifford Acoff  
**HASSAN KAROMA** by Patricia Bane  
**BEVERLY KELSVEN** by Cheryl Edwards  
**MARION KELSVEN** by Cheryl Edwards  
**ETHELYN KILMER** by Brian Kilmer  
**RUTH KOTHFUSS** by Marcia Depriest  
**CORLY KRUZ'S WORK IN BOSNIA** by Mark L. Gorveatte  
**THE SUNDAY SCHOOL TEACHERS OF LANCASTER WESLEYAN CHURCH** by Lancaster Wesleyan Church  
**JAKE & DIANE LAPP** by Barry Taylor  
**SHANNON LEEBRICK** by Kasey Portenier  
**DAVID & LYNDA LEWIS** by Terry Penland  
**JO ANNE LYON** by South Carolina District, Joyce Kinney  
**JOHN LYON** by Elizabeth Allison  
**MOM MCFADDEN** by Harriet Johnson  
**AMY MEDDERS** by Nathan L. Medders  
**DON & NAOMI MEULLER** by Charles Drake  
**ALFRED C. MILLER** by Colby Wesleyan Church  
**RON MITCHELL** by Folashade Osilaja  
**MOTHER FOR MOTHER'S DAY** by Christine King  
**JANET NICKEL** by Jeffrey Peck  
**DAVID & JOYCE RAYMES** by Second Story Homes  
**RIVERSIDE WESLEYAN CHURCH** by Gary Chipman  
**SALIFU RECOVERY CENTER** by Kim Quinn O'Hara

**SARAH, WALT & CHARLIE** by Terry & Amy Penland  
**KATHY STALLINGS** by Kara Hurlburt  
**REBECCA STIREWALT** by Monica Trotter  
**KRISTI STURGIS** by Stephanie Hurst  
**STEVEN & JOANNA WATSON** by Second Story Homes

### In Memory of ...

**LEONIE AUSTON** by Georjeaa Preston  
**ESTHER BARRETT** by Nancy Kane  
**BRIAN WESLEY BOGART** by Deanne Bogart Lessley  
**YVONNE BROENEN** by Sheila Johnson  
**CHAD COPELAND** by Phyllis Copeland  
**DARLENE COSSIN** by Chris Foster, Erling Larson, Bob Crawford, Heritage Wesleyan Church & John Bray  
**RAYMOND DOBIAS** by Carolyn S. Fowler  
**DON ELLIOTT** by Lois J. Downey  
**CAITLYN ROSE GOODMAN** by Laura Goodman  
**ROSS HOFFMAN** by Mary Martin  
**MARVIN HUGHES** by Roberta Hughes  
**AUNT LOIS JOHNSON** by Reid Hettich  
**JAMIE JOHNSON** by Elaine Rose  
**DOROTHY JONES** by Donald Thompson  
**EDNA JUDY** by Prairie City Wesleyan Women  
**RUSSELL KALLSTROM** by Barb Kinde, T. & M. Erickson  
**NANCY KEEVIL** by Brad Keevil  
**CHARLES KINNEY** by Antoinette Saunders  
**DONNA KLOCKER** by Reid Hettich  
**ANDREW LAUBER** by Reid Hettich  
**VELDA LEFEBER** by The Wesleyan Church Corporation  
**JUDY LITTLE** by Leeann Little, Warren Little, Chris Wilson & Jullie Totino  
**LEONARD & VETA MILLS** by Tim & Sharon Mills  
**RONALD MITCHELL** by Laurence Mitchell  
**VESTA MULLEN** by Paul R. Mills  
**ELIZABETH NICKELL** by Katie Denney  
**DORIS NIELSEN**  
**NICHOLAS OBASI** by Anthony Obasi  
**REV. PETER OGUNWUMI** by Scott Forbes  
**TONY & JEAN PALUMBO** by Dave Palumbo  
**CRICKET PURCELL** by Indiana Wesleyan University  
**QUENTIN RADFORD** by David Beam  
**JAROD RIAL** by Janet Arnold  
**BEN SMALLWOOD** by Bennie Hart  
**DONALD TEIGAN** by Arlene Myrlie  
**WILLIAM WALKER, SR.** by Kathy Knobloch  
**MYRA WRIGHT** by Ray Wright





*“Truly I tell you,  
whatever you did  
for one of the least  
of these brothers  
and sisters of mine,  
you did for me.”*

—Matthew 25:40



*Opportunity. Dignity. Hope.*

World Hope International, Attn: Gift Processing,  
P.O. Box 17151, Baltimore, MD 21297-1151  
888-466-4673 | [whi@worldhope.net](mailto:whi@worldhope.net) | [WorldHope.org](http://WorldHope.org)

**WORLD HOPE E-UPDATES:** Sign up to receive the  
latest WHI news online at [worldhope.org](http://worldhope.org)

