



SCHOOLS ALLIANCE
for EXCELLENCE

AN EDUCATION SYSTEM THAT IS BETTER FOR ALL



Professional
Learning
Programme
2025/26

[Click here
for more
Info](#)

Professional Learning and Development Programme 2025/26

Developing Leaders. Strengthening Learning. Transforming Futures.

Our Professional Learning Programme 2025/26

Access to high-quality personal development opportunities is not a luxury but a necessity. The Education Endowment Foundation states that great teaching is the most powerful lever schools have to improve children's education.

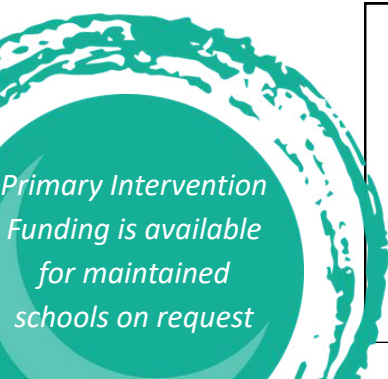
SAfE is committed to providing the highest quality professional learning that supports schools and trusts to drive improvement, train and develop staff and provide professional challenge. Our professional learning strategy for 2025/26 aligns with national priorities, including the Ofsted 2025 consultation, the Curriculum and Assessment Review, and the Children's Wellbeing and Schools Bill. We are therefore really pleased to share SAfE's Professional Learning Programme.

Our offer supports schools to respond proactively to these developments—strengthening curriculum, pedagogy, and inclusive practice—while placing pupil wellbeing and educational equity at the centre of school improvement and staff development. Our professional learning covers a range of areas from leadership development to curriculum, teaching and learning, for all phases from Early Years to post-16.

All of our programmes and networks adhere to our Professional Learning Principles and are delivered by our highly experienced team in addition to leading national experts in education. Further details about all of our programmes and networks can be found by clicking the hyperlinks in this brochure.

We can also provide flexible in-school training, which can take place on INSET days and involve all staff within a school, or it can be delivered to a specific group at any other time. If you are interested in this please get in touch.

New opportunities will emerge during the year as SAfE responds on your behalf to the changing educational context. Keep abreast of our latest opportunities by regularly checking [our website](#) and following us on [LinkedIn](#).



1	Introduction & Contents	13	Teaching & Learning
2	SAfE Professional Learning Principles	17	Assessment & Moderation
3	Leadership Development	19	Governance
6	NPQs	20	SAfE Subscription
8	Inclusion, Equity & SEND	21	Registration/How to Book

SAfE's Professional Learning Principles



Leadership Development

Educational leadership controls the climate and culture of every school. As such, leadership is a vital component in creating schools where children, young people, staff and communities get the very best of what education has to offer.

At SAfE, we understand the challenges of school leadership at every level, and work closely with leaders to ensure that they are knowledgeable, skilful, and impactful. Whether you are working towards a professional qualification in school leadership, or developing your 'lived leadership' in your current role, SAfE's leadership offer will extend and deepen your learning.

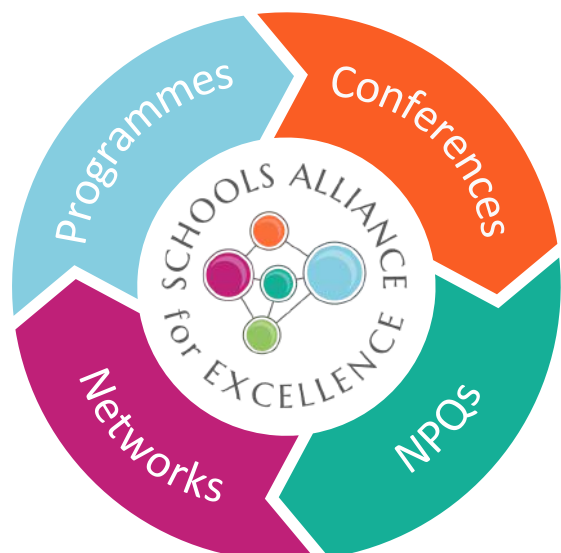
SAfE's Leadership Development is underpinned by SAfE's Professional Learning Principles, and by evidence-informed research, always delivered by experts with current experience and knowledge.

Our programmes span the school year so that participants revisit thinking and learning regularly because we know that change is a process, not an event. Programmes bring leaders from the same roles together so that we learn with and from each other through collaboration and network building.

Educational leadership often begins at the earlier stages of a teaching career, and we offer leadership pathways from the aspiration to lead right through to executive leader level. In addition to our programmes of learning and collaboration, the annual SAfE Leadership Conference is an opportunity for leaders to immerse themselves in thought leadership, and to do so with national and international experts guiding that thinking. Whatever your leadership needs, SAfE is here to support you on your journey to becoming the very best leader you can be.

Priorities

- Assessment & Moderation
- Governance
- Inclusion, Equity & SEND
- Leadership
- Teaching & Learning



Primary

Primary Assistant & Deputy Heads Network 25-26

8th October 2025 - 3 sessions
£380 SAfE Subscriber / £475 Non Subscriber

Small Schools Networks 25-26

14th October 2025 - 3 sessions
FREE Maintained / £150 Academies

Embedding Excellence 25-26

12th November 2025 - 2 sessions
£360 SAfE Subscriber / £450 Non Subscriber

Primary Headteacher Conference 2026

7th July 2026
FREE to all

Secondary

Secondary Heads of Sixth Form Network 25-26

7th October 2025 - 3 sessions
£380 SAfE Subscriber / £475 Non Subscriber

Secondary Deputy Heads Network 25-26

7th October 2025 - 3 sessions
£380 SAfE Subscriber / £475 Non Subscriber

NEW

Secondary Assistant Heads Network 25-26

21st October 2025 - 3 sessions
£380 SAfE Subscriber / £475 Non Subscriber

Cross Phase

New Headteacher Welcome Breakfast Autumn 25

10th September 2025
FREE to all New Headteachers / Heads of Schools

Cross Phase

New Headteacher Induction 25-26

2nd October 2025 - 6 sessions
£800 SAfE Subscriber / £1000 Non Subscriber

CEO Summit 25-26

25th February 2026 - 2 sessions
FREE to all

SAfE Leadership Conference 2026

18th March 2026
£160 SAfE Subscriber / £200 Non Subscriber



"The leadership development support we benefitted from our SLA with SAfE provides us with invaluable opportunities to prioritise our focus on strategy when the day-to-day business is pulling us in other directions."
Leadership event

Make a real impact in your schools with our NPQs

We deliver a suite of NPQs to teachers and school leaders with insights and coaching from our highly experienced facilitators and leaders from across the region. Our blended learning approach combines online learning, alongside virtual seminars and in-person conferences offering the flexibility to balance your NPQ with existing workload.

The NPQs are designed to add skills and best practice to your schools, to bring out the best in pupils and to give talented staff career development and enrichment opportunities. Get in touch at npq@stsn.co.uk to find out more.

Leadership NPQs

For school leaders who are, or are aspiring to be:

NPQ in Senior Leadership (NPQSL)

A senior leader with cross-school responsibilities.

NPQ in Headship (NPQH)

A headteacher or head of school with responsibility for leading a school.

NPQ in Executive Leadership (NPQEL)

An executive head or have a school trust CEO role with responsibility for leading several schools.

NPQ in Early Years Leadership (NPQEYL)

Managers of private, voluntary, and independent nurseries.
Headteachers of school-based or maintained nurseries.
Childminders with leadership responsibilities.

NPQ for SENCO (NPQSENCO)

Responsible for leading special educational needs and disability (SEND) provision in school. This NPQ is now the mandatory qualification for SENCOs.



For teachers and leaders who have, or are aspiring to have, responsibilities for:

Specialist NPQs

NPQ in Leading Teaching (NPQLT)

Leading teaching in a subject, year group, key stage or phase.

NPQ in Leading Behaviour and Culture (NPQLBC)

Leading behaviour or supporting pupil wellbeing in their school.

NPQ in Leading Teacher Development (NPQLTD)

Leading the development of other teachers in their school.

NPQ in Leading Literacy (NPQLL)

Leading literacy across a school, year group, key stage or phase.

NPQ in Leading Primary Maths (NPQLPM)

Leading maths across a primary key-stage or school.

Programme costs

Funding and course costs have yet to be confirmed by the DfE. Register your interest or find out more at www.stsn.co.uk

About STSN

STSN is part of SaFe and has successfully delivered National Professional Qualifications (NPQs) to over 4,500 leaders since 2013. STSN works with school leaders from 35 Local Authorities in the South East, East of England and London, in partnership with SFET and Xavier Teaching School Hubs. STSN delivers NPQs on behalf of Teach First, the leading national NPQ provider, based on the DfE content framework.

Inclusion, Equity & SEND

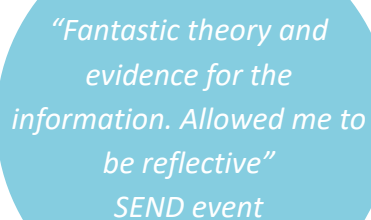
We believe that every individual within a school community should be valued for their unique skills, experiences and perspectives. Inclusion enables all individuals to effectively communicate and work together to create a thriving school community where everyone can succeed and progress.

SAfE supports leaders and staff across school settings to develop a clear understanding of Inclusion, Equity and SEND to ensure there are firm foundations to further develop and improve great inclusive practices. We place Inclusion, Equity and SEND at the heart of school improvement so that it is embedded in everyday practice. We work alongside leaders to empower educators to further develop inclusive values through leadership, curriculum, great pedagogy, and everyday practice.

Our expert team offers guidance, professional learning and consultancy to help support settings with rigorous self-evaluation and then in identifying key priorities, putting in place targeted actions to further develop and improve inclusive practices.

All our professional learning is informed by the latest research and evidence to ensure schools receive clear and up to date guidance which will support training and development of all staff.

We also work in partnership with Surrey County Council in order to ensure our work around Inclusion and SEND aligns and complements with their Lifetime of Learning Strategy.



*“Fantastic theory and
evidence for the
information. Allowed me to
be reflective”
SEND event*

Self-Evaluation & Impact

What we offer:

- Frameworks and tools to support rigorous self-evaluation
- Coaching to identify strengths and key priorities
- Practical strategies to improve outcomes for all learners

Targeted Training & Development

What we offer:

- CPD around inclusion, equity and SEND
- A focus on equity to develop care, belonging and community in schools
- Practical strategies grounded in current research
- Networks and updates to support collaborative working and sharing of best practice
- Learning that builds confidence and capacity across your team

Bespoke Consultancy

What we offer:

- Strategic support aligned to your school's context
- Coaching and mentoring to support the leadership of inclusion, equity and SEND
- Whole-school and phase-specific development planning



*"I feel better equipped to lead the subject. I know what the expectations are and I have tools to help me meet those expectations."
Primary event*

Primary

Rachel MacFarlane Education
Equity for Primary Schools 25-26

13th October 2025 - 4 sessions
£200 Maintained schools/ £400 Academy schools

NEW

Inclusion Leaders Hub for
Primary 25-26

22nd October 2025 - 3 sessions
£200 SAfE Subscriber / £250 Non Subscriber

Secondary

NEW

Inclusion Leaders Hub for
Secondary 25-26

22nd October 2025 - 3 sessions
£380 SAfE Subscriber / £475 Non Subscriber

Rethinking Secondary Inclusion with
Marc Rowland 25-26

5th November 2025 - 3 Sessions
£240 SAfE Subscriber / £300 Non Subscriber

Cross Phase

New to Role SENCo Autumn 25

9th October 2025
£220 for all

NEW

Rethinking Inclusion Autumn 25

16th October 2025
FREE to All

NEW

Strategic Use and Deployment
of Teaching Assistants 25-26

23rd October 2025 - 5 Sessions
£560 SAfE Subscriber / £700 Non Subscriber

NEW

Diverse Educators: Growing Trans and
Non-Binary Awareness Autumn 25

11th November 2025
£50 SAfE Subscriber / £62.50 Non Subscriber

NEW

Leadership of Inclusion
Programme Spring 2026

22nd January 2026 - 5 Sessions
£480 SAfE Subscriber / £600 Non Subscriber

Cross Phase

NEW

Diverse Educators: Integrating EAL and Multilingual Learners Spring 26

12th January 2026

£50 SAfE Subscriber / £62.50 Non Subscriber

NEW

Diverse Educators: Embedding Diversity in the Curriculum Spring 26

4th February 2026

£50 SAfE Subscriber / £62.50 Non Subscriber

NEW

Diverse Educators: Increasing Neurodiversity Awareness Spring 26

11th March 2026

£50 SAfE Subscriber / £62.50 Non Subscriber

New to Role SENCo Summer 26

11th June 2026

£220 for all

Specialist

Specialist Centre Network 25-26

20th November 2025 - 3 sessions

Free to all

NEW

Strategic Use and Deployment of Teaching Assistants

A year-long programme designed to help schools maximise the impact of their teaching assistants, improving outcomes for all learners.

What to Expect

Through four in-person sessions and one online seminar, school leaders will explore research, best practices, and strategic approaches to TA deployment.

Key Areas of Focus

- Assessing current practice and identifying priorities
- Applying research to strengthen pedagogy and independence
- Developing a whole-school vision and implementation strategy
- Embedding effective practice for long-term impact
- Coaching and support throughout the programme



By the end of the programme, schools will have reviewed TA deployment, created an action plan, and established sustainable strategies to enhance TA effectiveness. This will lead to greater consistency in classroom support, increased learner independence, and improved curriculum access.

£560 SAfE Subscriber / £700 Non Subscriber

Surrey Inclusion Framework

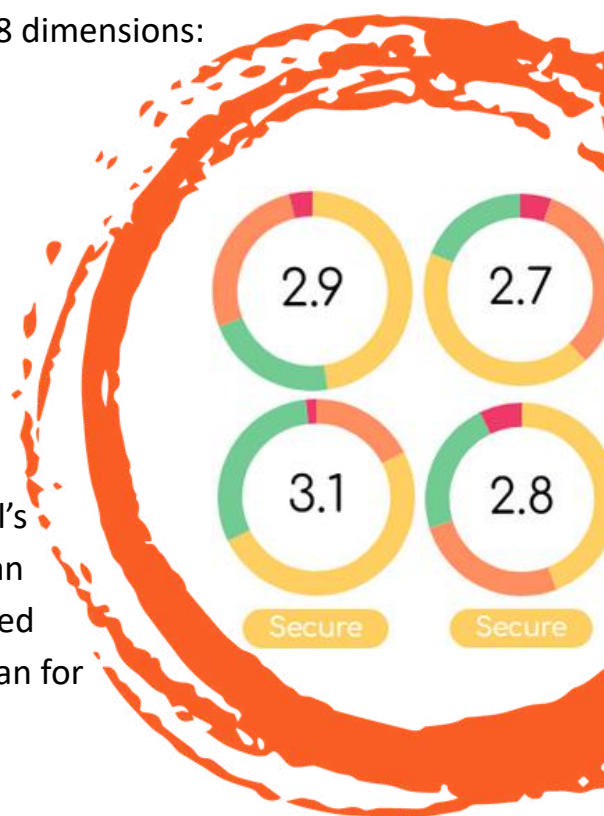
Supporting Effective Self-evaluation and Decision-making

The Surrey Inclusion Framework was created as a tool for supporting the continuous development of inclusion across all schools in Surrey. Inclusion is not a destination but an ongoing process which presents schools with different challenges every year. The Surrey Inclusion Framework can support effective self-evaluation leading to focused areas for development which reflect a holistic understanding of just how well each school or trust supports and meets the needs of learners.

The Surrey Inclusion Framework focuses on the following 8 dimensions:

- Leadership including Governance
- Culture & Belonging
- Pedagogy including Teaching Assistants
- Curriculum
- Assessment & Tracking
- Professional Development
- Engaging External Agencies
- Families & Learners

Our online tool provides clear visuals to illustrate a school's performance across the 8 dimensions of inclusion. This can then help inform key areas for development which can feed into the whole school development plan and an action plan for inclusion.



Free Access for all - Evaluate My School

Every school is able to have access to the Surrey Inclusion Framework. We see this as a fantastic opportunity for leaders to engage in discussion with a range of stakeholders, using evidence which gives an accurate reflection of school performance and practices around inclusion. We firmly believe that effective self-evaluation ensures that the right areas of inclusion receive focus and attention, so they further develop and improve.

Get your login and free access to the Surrey Inclusion Framework by e-mailing admin@schoolsallexcel.com

Teaching & Learning

The quality of teaching is the single factor that has the highest impact on learning. From pedagogy to curriculum, and assessment to adaptive teaching, the world of teaching and learning is the core purpose of schools.

At SAfE, we are proud of our extensive professional learning offer that aims to support excellence in every classroom, for every learner, every day.

SAfE's professional learning are delivered to reflect the SAfE Professional Learning Principles, by our team of experienced and expert colleagues who work alongside participants to implement sustained change over time. Content is always evidence based and we are privileged to work with a range of thinkers who are pioneering research nationally.

We recognise that significant professional learning and development is gained from the opportunity to network with peers. Therefore, we are proud to co-ordinate a wide variety of networks which are valued by participants, and form a vital element of how we improve the learning experiences of children and young people.



Further events are regularly added, visit:
www.schoolsallianceforexcellence.co.uk

EYFS

NEW

Early Years Network 25-26

6th October 2025 - 3 sessions

£200 SAfE Subscriber / £250 Non Subscriber

Early Years Moderation Summer 26

6th May 2026

£100 SAfE Subscriber / £125 Non Subscriber

Early Years Conference Summer 26

6th July 2026

£120 SAfE Subscriber / £150 Non Subscriber

Primary

Primary English Network 25-26

2nd October 2025 - 5 sessions

FREE SAfE Subscriber / £250 Non Subscriber

New to Primary Subject Leadership 25-26

6th October 2025 - 4 sessions

£25 SAfE Subscriber / £250 Non Subscriber

NEW

Building Strong Foundations from the Start 25-26

9th October 2025 - 3 sessions

£380 SAfE Subscriber / £475 Non Subscriber

NEW

Using Retrieval Practice and Feedback Effectively Workshop Autumn 25

14th October 2025

£220 SAfE Subscriber / £275 Non Subscriber

High Impact Teaching: Primary. Reading, Writing and Oracy 25-26

21st October 2025 - 8 sessions

£320 SAfE Subscriber / £400 Non Subscriber

NEW

What's Next for Curriculum and Assessment Autumn 2025

11th November 2025

£72 SAfE Subscriber / £90 Non Subscriber

NEW

AI Literacy for Teaching Staff: From Understanding to Safe & Effective Practice Autumn 25

12th November 2025

£80 SAfE Subscriber / £100 Non Subscriber

Primary

NEW

Designing and Leading Effective Professional Development 25-26

12th November 2025 - 2 sessions
£500 SAfE Subscriber / £625 Non Subscriber

Primary English Leads Conference Autumn 25

18th November 2025
£200 SAfE Subscriber / £250 Non Subscriber

NEW

Preparing Year 6 Pupils for Secondary Education 25-26

25th November 2025 - 3 sessions
£340 SAfE Subscriber / £425 Non Subscriber

NEW

Supporting Pupils with Digital Literacy Spring 26

3rd February 2026
£80 SAfE Subscriber / £100 Non Subscriber

Secondary

AI in Secondary 25-26

21st October 2025 - 3 sessions
£90 to SAfE Subscriber / £112.50 Non Subscriber

Overseas Trained Teachers Network 25-26

22nd October 2025 - 3 sessions
£200 for all

Secondary Curriculum Leaders Network 25-26

5th November 2025 - 3 Sessions
FREE SAfE Subscriber / £300 Non Subscriber

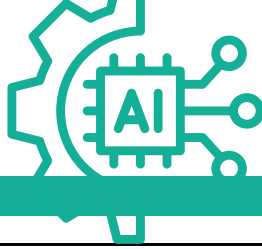
Cross Phase

SAfE & Xavier Middle Leaders Primary & Secondary 25-26

12th November 2025 - 6 sessions
£200 SAfE Subscriber / £250 Non Subscriber



"Clear discussion of approaches and strategies. Opportunities to ask questions of very approachable experts."
Secondary event



NEW

AI in Education Accreditation for Primary Schools 25-26

Navigating AI safely & effectively

SAfE is delighted to announce a partnership with AI in Education, bringing their nationally recognised certification framework, in addition to exclusive benefits to Surrey primary schools. The AI in Education Certification provides a research-backed framework for responsible AI adoption in schools, helping you integrate AI confidently and ethically whilst building staff capability and student readiness through a combination of face-to-face and virtual meetings.

AI Literacy Hub

- Leadership Strategy Days – Heads & SLT tackle vision, policy and risk
- SEND & Inclusion Labs – SENCos explore adaptive, accessible AI tools
- Whole-Staff Awareness Sessions – staff introduction to AI and its benefits and risks
- Assessor Coaching Calls – light-touch check-ins to keep evidence on track

Digital Pedagogy Network

- Termly virtual meetings focused on enhancing teaching with AI
- Collaborative workshops on curriculum integration
- Peer evaluation opportunities and shared learning experiences
- Direct access to our Pebblepad community of schools

Exclusive Benefits for Surrey primary schools

Through this partnership, primary schools gain access to:

- Professional learning and support
- Comprehensive guidance materials and case study library
- Expert assessment and feedback throughout the certification journey
- Access to a supportive community of schools on the same path

'Great range of useful
resources to use in
school. Clear pros and
cons for use of AI'
AI event

[Click here
for more
info](#)

Maintained primary schools £200

Academy primary schools £450

We recognise AI in schools is a growing priority, we have significant additional funding from the Primary Intervention Fund available which can be accessed by maintained schools on request.

SAfE Subscribers and multi-academy trusts will also be offered a discount on request.

Interested in learning more?

Please visit [our website](#) to register your interest.

Early registration is encouraged. Deadline is Friday 4th July 2025.

Assessment & Moderation

SAfE is pleased to provide the statutory assessment and moderation service* for Surrey, working in partnership with Surrey County Council.

In addition, we provide all maintained schools, academies, free schools and independent schools with the opportunity to attend training events which provide clear information and guidance to ensure that you and your team can deliver accurate primary assessment for your school.

Academies, free schools and independent schools may also take advantage of our Primary Service Assessment package, which includes several of the key training elements. Click here for more information or contact e.elliott@schoolsallexcel.com for an informal conversation about your specific situation and requirements.

*Surrey maintained schools are entitled to a fully funded statutory assessment support service, including email and telephone access to our team of assessment advisors. Click [here](#) for more information.

EYFS

Early Years Moderation Summer 26

6th May 2026

£100 to SAfE Subscriber / £125 Non Subscriber

Primary

New to Year 6 Programme 25-26

13th October 2025 - 5 sessions

£200 SAfE Subscriber / £250 Non Subscriber

Assessment Leader Briefings 25-26

13th November 2025 - 4 sessions

£160 SAfE Subscriber / £200 Non Subscriber

Primary

NEW

**Securing Greater Depth in Key
Stage 2 25-26**

24th November 2025 - 4 sessions
£240 SAfE Subscriber / £300 Non Subscriber

Year 6 Moderator Training 25-26

27th November 2025 - 2 sessions
£240 SAfE Subscriber / £300 Non Subscriber

**Year 6 Cross-school Writing
Moderation 29th January 2026**

29th January 2026
£100 SAfE Subscriber / £125 Non Subscriber

**Year 2 Cross-school Writing
Moderation Spring 26**

5th February 2026
£100 SAfE Subscriber / £125 Non Subscriber

**Assessment Briefings For
Headteachers Spring 26**

25th February 2026 - 2 sessions
£80 SAfE Subscriber / £100 Non Subscriber

**Year 3-5 Cross-school Writing
Standardisation Spring 26**

12th March 2026
£100 SAfE Subscriber / £125 Non Subscriber

**Year 6 Cross-school Writing
Moderation 18th March 2026**

18th March 2026
£100 SAfE Subscriber / £125 Non Subscriber

**Multiplication Tables Check
Briefing Summer 26**

20th April 2026
£56 SAfE Subscriber / £70 Non Subscriber

**Phonics Screening Check
Briefing Summer 26**

5th May 2026
£56 SAfE Subscriber / £70 Non Subscriber

*"Loads of information,
all relevant. Nice to
have a mix of zoom and
face-to-face sessions."
A&M event*





Governance

Governance: Developing Chairs

Strengthen your governance leadership through our face-to-face programme specifically created for current and aspiring chairs. Meeting in person allows you to build valuable connections while developing practical skills with immediate impact.

Over three focused sessions, you'll develop essential competencies for effective governance leadership:

- Understanding the responsibilities of the chair role and strategies for leading governing body business effectively
- Understanding governance structures and requirements
- Establishing effective accountability through constructive challenge
- Building professional working relationships with school leaders
- Setting a clear strategic vision and direction for your school
- Building and maintaining diverse, high-performing governance teams
- Handling governance challenges with confidence

Governance

**Governance: Developing
Chairs 25-26**

11th November 2025 - 3 Sessions
£250 For All

*"The course has been an instrumental element to my induction as a Chair - from an information and networking perspective this is key for anyone starting or wanting to develop as a Chair."
Governor event*

Why choose SAE training?

- Face-to-face local learning: connect directly with fellow chairs in Surrey, building a local support network that understands your specific context and provides ongoing collaboration opportunities.
- Personalised leadership insights: gain valuable self-awareness through comprehensive 360-degree feedback
- Features: includes practical application exercises to ensure real-world readiness and opportunities for self-reflection and planning for next steps in development.

Subscription 2025-26

Our education partnership thrives because schools participate, engage, support and drive the work forwards. Without the support of every school and the collaboration of partners, SAE would be unable to continue to develop and deliver to meet the collective need. We are committed to leading the school-led change that we have set as our vision for education in Surrey, working with every school and partner.

Over 300 Surrey schools and academies have opted to subscribe to SAE, enjoying exclusive events and discounted prices which are shown throughout the brochure. Subscriber discounts will be automatically applied when you log in to book events and training.

Existing Subscribers

There is no need to renew your school's subscription for the year 2025/26, your subscription invoice will be emailed to you in early October.

School Size*	Cost
Less than 100	£130
100 to 299	£260
300 to 449	£500
450 to 599	£630
600 to 899	£890
900 to 1,199	£1,300
More than 1,200	£1,575

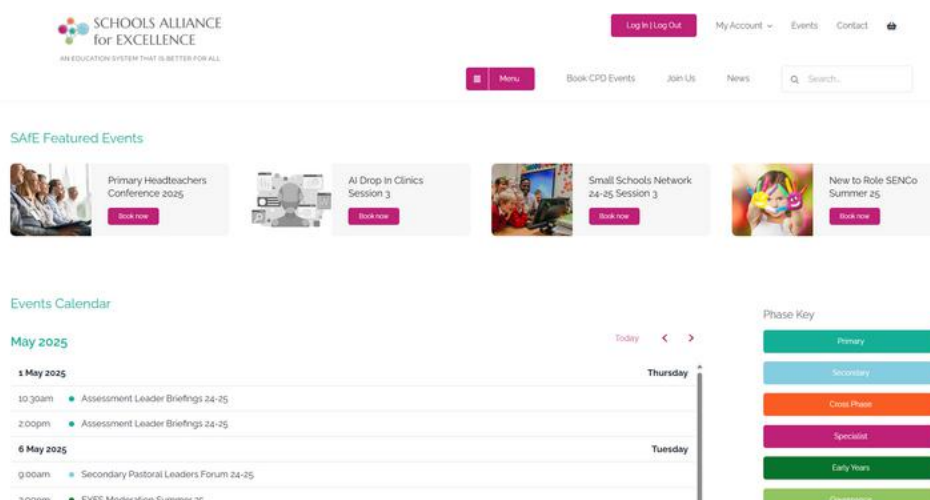
*Based on Jan 2025 NOR excluding nursery pupils.

Registration/How to book

Every Surrey school has an account with SAfE's online booking portal. The school account is usually managed by the Headteacher, CPD Lead or Business Manager. This way, CPD can be managed centrally and to assist with the release of staff.

If you are unsure who your designated account manager is, please email admin@schoolsallexcel.com and we can confirm who this is.

Click on the links in this brochure or head straight to the [SAfE website](https://schoolsallexcel.com) and click on the 'Book CPD Events' button and/or use the 'Search' bar.



*'Thank you very much indeed
for an informative and
entertaining training – your
knowledge and understanding
of the role is excellent and I
feel inspired to put new ideas
into practise! Brilliant!'
Primary event*





SCHOOLS ALLIANCE for EXCELLENCE

AN EDUCATION SYSTEM THAT IS BETTER FOR ALL



01483 749 954



admin@schoolsallexcel.com

www.schoolsallianceforexcellence.co.uk

