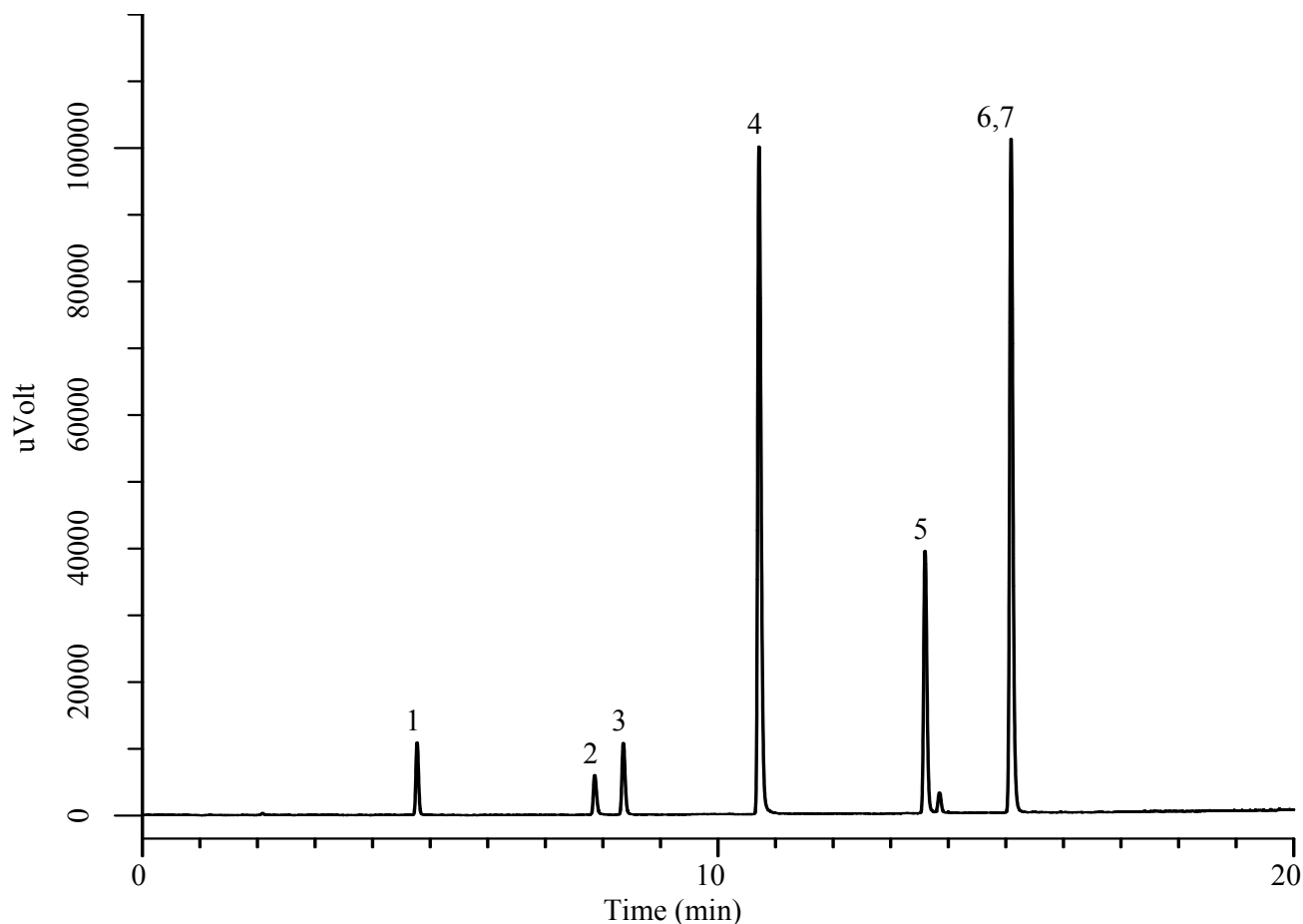


# InertSearch™ for GC

InertCap® Applications

## Organic fluorine compounds

Data No. GA214-0591



### Conditions

**System** : GC-FID  
**Column** : TC-BOND Alumina/KCl  
0.53 mm I.D. x 30 m df = 10 µm  
**Col. Cat. No.** : 1010-40143  
**Col. Temp.** : 40 °C(5 min hold) - 10 °C/min - 200 °C  
**Carrier Gas** : He 20 kPa  
**Injection** : Split flow 50 mL/min  
120 °C  
**Detection** : FID Range 10<sup>0</sup>  
200 °C  
**Sample Size** : 500 ppm Vol/Vol in N<sub>2</sub>  
400 µL

### Analyte

1. Octafluoropropane (R-218)  
2. Trifluoromethane (R-23)  
3. Dichlorodifluoromethane (R-12)  
4. Octafluorocyclobutane (R-C318)  
5. 1,2-Dichloro-1,1,2,2-tetrafluoroethane (R-114)  
6. Trichlorofluoromethane (R-11)  
7. 1,1,1,2-Tetrafluoroethane (R-134a)