

DYE | NBA AVIATION

Architecture Planning Design



Atlantic Aviation BNA | Nashville, TN



FIRM OVERVIEW

DYE | NBA Aviation



1975
FOUNDED

130+
STAFF

OFFICES
ATLANTA, GA
WASHINGTON, DC

24
ACTIVE STATES

TOP 50
DESIGN FIRM
RANKED BY BD+C

11 MM
SUSTAINABLE
SQUARE FEET

FIRM OVERVIEW

Niles Bolton Associates (NBA) and its subsidiary, DYE | NBA Aviation, is a 130-person firm providing architecture, interior design, landscape architecture, and urban planning services. Founded in 1975, NBA has completed projects in 49 states and 16 countries. With offices in Atlanta, Georgia and Alexandria, Virginia, NBA was named a Top 50 design firm in the U.S. by Building Design & Construction. Our major markets include transportation, higher education, multifamily residential, retail, corporate and hospitality.

Our growth has been due, in large part, to an ability to understand clients' needs and to design projects meeting their requirements. For Niles Bolton Associates, success is measured not only with design awards, but by our ability to design an appropriate response to program and budget requirements, by acceptance in the market served, and by the ongoing financial reward for our clients. Throughout our 50 year history we have developed a strong sense of regionalism in our design methodology.

AVIATION DESIGN

For over 50 years, our aviation team has been designing award-winning facilities across the Continental United States, Hawaii, and into the Caribbean, Middle East and Asia. We have become a valued resource for transit authorities, municipalities, airports and general aviation operators who are addressing critical infrastructure needs through a range of transportation project types.

Our extensive experience in planning, permitting, operations, mixed-use development, and hospitality gives us a true understanding of how general aviation facilities can be critical drivers for the business community, economic development, and even in disaster response.

SELECT AVIATION + TRANSIT PROJECTS

Atlantic Aviation BCT

Boca Raton, Florida

Atlantic Aviation BHM

Birmingham, Alabama

Atlantic Aviation BNA

Nashville, Tennessee

Atlantic Aviation Corporate Hangar

Orlando, Florida

Atlantic Aviation PDK Hangars K, L & Q

Chamblee, Georgia

Beckley Intermodal Gateway

Beckley, West Virginia

Birmingham Intermodal Facility

Birmingham, Alabama

Franklin Mountain Aviation / Million Air ELP

El Paso, Texas

Franklin Mountain Aviation MAF

Midland, Texas

Fuel Storage & Dispensary Facilities

Ft. Bragg, North Carolina

Fulton County Airport Corporate Hangar

Atlanta, Georgia

Greyhound Downtown Atlanta Terminal

Atlanta, Georgia

Kona Jet Center FBO

North Kona, Hawaii

Multi-Modal Transportation Center

Athens, Georgia

Newport News Multi-Modal Station

Newport News, Virginia

Sky Harbour Aviation Hangar Complex - ADS

Addison, Texas

Sky Harbour Aviation Hangar Complex - APA

Denver, Colorado

Sky Harbour Aviation Hangar Complex - BNA

Nashville, Tennessee

Sky Harbour Aviation Hangar Complex - DVT

Phoenix, Colorado

Stone Mountain Aerial Tram & Rail Station

Stone Mountain Park, Georgia

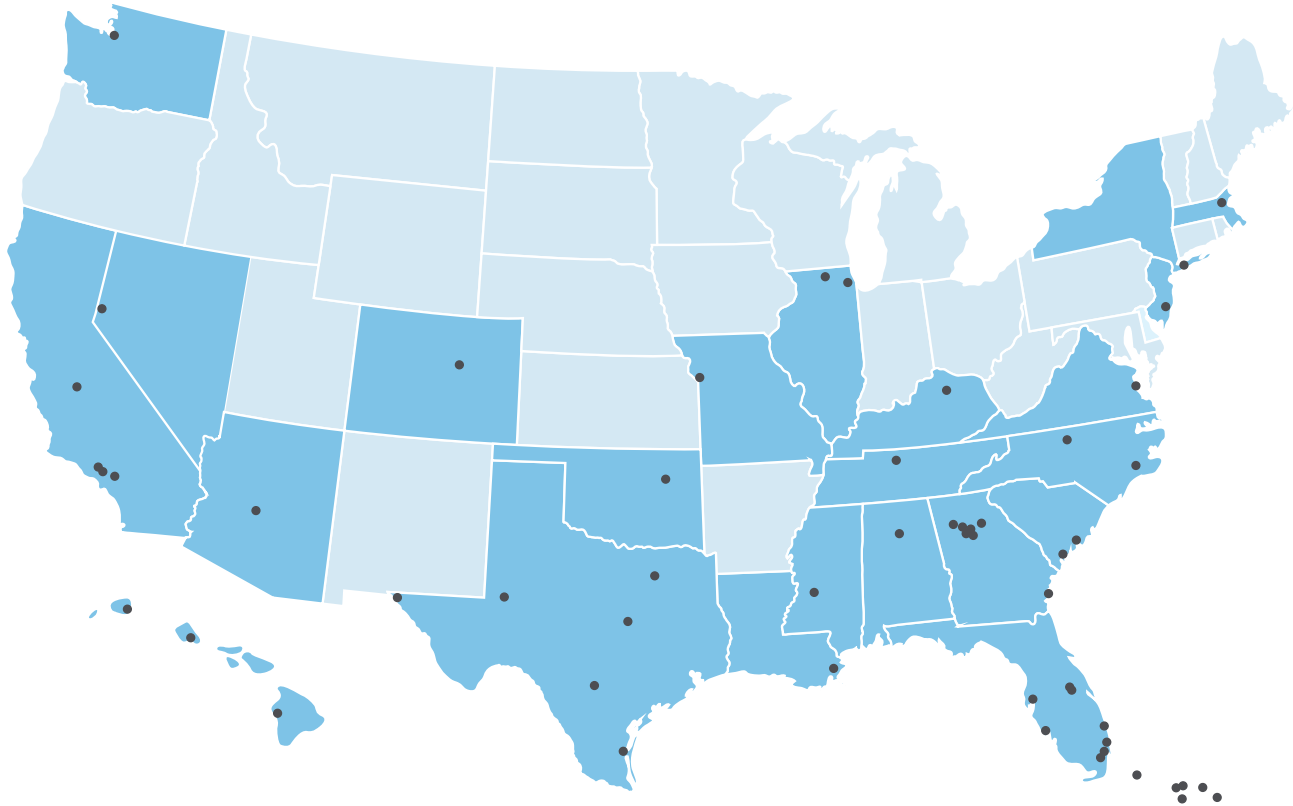
Vermont / Sunset Transit Station

Los Angeles, California



AVIATION EXPERIENCE

50+ Projects | 23 States | 9 Countries



PROJECT	LOCATION	PROJECT	LOCATION
ACT Waco Regional Airport	Waco, TX	LIH Lihue Airport	Lihue, HI
ACY Atlantic City International Airport	Atlantic County, NJ	LZU Gwinnett County Airport	Lawrenceville, GA
ADS Addison Airport	Dallas, TX	MAF Midland International Air & Space Port	Midland, TX
ANU VC Bird International Airport	Antigua, BWI	MCO Orlando International Airport	Orlando, FL
APA Centennial Airport	Denver, CO	MDW Chicago Midway International Airport	Chicago, IL
ATL Hartsfield Jackson Atlanta Int. Airport	Atlanta, GA	MKC Charles B. Wheeler Downtown Airport	Kansas City, MO
AXA Clayton J. Lloyd International Airport	Anguilla, BWI	MSY Louis Armstrong New Orleans Int. Airport	Kenner, LA
BCT Boca Raton Airport	Boca Raton, FL	MYNN Lynden Pindling International Airport	Nassau, The Bahamas
BED Laurence G. Hanscom Field	Bedford, MA	OAJ Albert J. Ellis Airport	Richlands, NC
BHM Birmingham-Shuttlesworth Int. Airport	Birmingham, AL	ONT Ontario International Airport	Ontario, CA
BNA Nashville International Airport	Nashville, TN	OPF Miami-Opa Locka Executive Airport	Opa Locka, FL
BUR Hollywood Burbank / Bob Hope Airport	Burbank, CA	ORL Orlando Executive Airport	Orlando, FL
CHS Charleston International Airport	Charleston, SC	PBI Palm Beach International Airport	Palm Beach, FL
CRP Corpus Christi International Airport	Corpus Christi, TX	PDK DeKalb-Peachtree Airport	Chamblee, GA
DVT Phoenix Deer Valley Airport	Phoenix, AZ	PHF Newport News/Williamsburg Int. Airport	Newport News, VA
EIS Tortola Beef Island Development Study, Signature	Tortola, BVI	PUJ Paulding Northwest Atlanta Airport	Dallas, GA
ELP El Paso International Airport	El Paso, TX	RFD Chicago Rockford International Airport	Rockford, IL
FA54 Coral Creek Airport	Placida, FL	RNO Reno-Tahoe International Airport	Reno, NV
FAT Fresno Yosemite International Airport	Fresno, CA	SAT San Antonio International Airport	San Antonio, TX
FFC Atlanta Regional Airport	Atlanta, GA	SEA Seattle-Tacoma International Airport	Seattle, WA
FRG Republic Airport	Farmingdale, NY	SSI McKinnon St. Simons Island Airport	St. Simons, GA
FTY Fulton County Airport - Charlie Brown Field	Atlanta, GA	STT Cyril E. King Airport	St. Thomas, USVI
GSO Piedmont Triad International Airport	Greensboro, NC	STX Henry E. Rohlsen Airport	Christiansted, St. Croix
HKJK Jomo Kenyatta International Airport	Nairobi, Kenya	TMB Miami Executive Airport	Miami, FL
HNL Daniel K. Inouye International Airport	Honolulu, HI	TPA Tampa International Airport	Tampa, FL
HXD Hilton Head Airport	Hilton Head, SC	TUL Tulsa International Airport	Tulsa, OK
JAN Jackson-Medgar Wiley Evers Int. Airport	Jackson, MS	TUPJ Terrance B. Lettsome Int. Airport	Beef Island, BVI
KOA Kona International Airport	Kona, HI	VNY Vans Nuys Airport	Northridge, CA
LEX Blue Grass Airport	Lexington, KY	ZBAA Beijing Capital International Airport	Beijing, China



MILLION AIR

Franklin Mountain Aviation | El Paso, TX



MEET THE TEAM

Aviation Studio



W. MERCER DYE JR.
PRESIDENT

- 40+ years of experience in aviation design
- National Business Aviation Association
- Past board member of the Fulton Co. Airport Association
- Past Chairman of the Dekalb Co. Airport Advisory Board
- Past board member of the Georgia Aircraft Association
- NFPA 409 Technical Committee for airport facilities
- Mercer University, West Georgia University



CANNON REYNOLDS, AIA, LEED AP
PRINCIPAL, MANAGING DIRECTOR

- 28 years of experience, joined NBA in 2000
- Registered architect in 18 states
- American Institute of Architects (AIA)
- Urban Land Institute (ULI)
- Young Presidents Organization (YPO)
- Georgia Tech College of Design Advisory Board
- M.Arch & BS Architecture: Georgia Institute of Tech.



RUSSELL SIGMAN, AIA
SENIOR ASSOCIATE

- 23 years of experience, NBA 2002-2006; 2022 - present
- Registered architect in Georgia and North Carolina
- NCARB Certified
- LEED Green Associate
- American Institute of Architects (AIA)
- United States Green Building Council (USGBC)
- Bachelor of Architecture: Virginia Tech



MELISSA BORRMANN, NCDIQ
ASSOCIATE PRINCIPAL, INTERIOR DESIGN

- 28 years of experience, joined NBA in 2012
 - National Council for Interior Design Qualification (NCIDQ)
 - International Interior Design Association (IIDA)
 - American Society of Interior Designers (ASID)
 - Commercial Real Estate Women (CREW)
 - BS Interior Design: Florida State University
-

130+ TEAM MEMBERS:



Carl Weaver



BH Yoo



Lydia Hagel



Stephanie Kirkpatrick



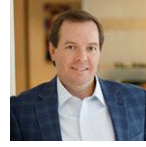
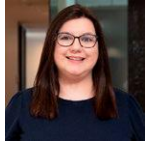
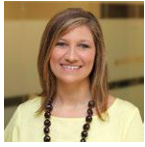
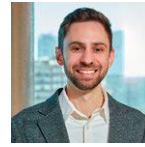
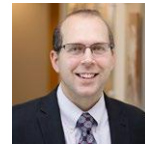
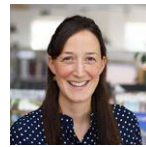
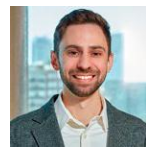
Steven Kane



Sam Ingram



Nicholas Parker







PROJECT EXPERIENCE

DYE | NBA Aviation



FBO EXECUTIVE TERMINALS

The General Aviation Executive Terminal is the front door to the business and economic community in most cities and towns. Our team has been in the business of designing, developing and even owning FBOs for more than 25 years.

DYE | NBA Aviation takes time to understand our clients' goals and budgets before design ever begins. It is our top priority to design Executive Terminals that support the FBO's employees in providing consistent service and excellence at an affordable cost. We design efficiency and safety into our buildings, which translates into fewer people required to provide first-class customer service. We know how to provide designs that are uniquely memorable and of high quality with exceptional durability, while at the same time consistently meeting our clients' goals and working within their budget requirements. No other team has more diverse experience in developing General Aviation FBO terminals.



BIG ISLAND JET CENTER
NORTH KONA, HAWAII



ATLANTIC AVIATION BCT
BOCA RATON, FLORIDA



FRANKLIN MOUNTAIN AVIATION MAF
MIDLAND, TEXAS

FRANKLIN MOUNTAIN AVIATION ELP

EL PASO, TEXAS



SERVICES

Architecture, Planning

CLIENT

Franklin Mountain Management, LLC

SCOPE / COMPONENTS

New 9,800 sf FBO Executive Terminal at El Paso International Airport (ELP) operated by Million Air

10,000 sf arrival canopy

New 23,300 sf aircraft hangar

24 covered parking spaces & 68 surface parking spaces

Coordinated with airport on new ramp project

Planning for future, second phase hangar

AWARDS

2021 ABC Excellence in Construction Award,
Commercial: \$10 - \$25 Million Category





MILLION AIR



ATLANTIC AVIATION BNA

NASHVILLE, TENNESSEE



SERVICES

Architecture, Interior Design, Landscape Architecture

CLIENT

Atlantic Aviation

SCOPE / COMPONENTS

11.42 acres of new site development

13,454 sf FBO building with spacious lobby, offices, conference space, pilot lounge, cafe, VIP lounge, men's and women's locker rooms, kitchen / back of house service area, and training room

25,330 sf hangar

Parking lot with 210 spaces

LEED Certified (pending)

AWARDS

IIDA Georgia, 2025 B.O.B. Award - Best of Government/Institutional & Public Assembly



ATLANTIC AVIATION BHM

BIRMINGHAM, ALABAMA



SERVICES

Architecture, Interior Design, Landscape Architecture

CLIENT

Atlantic Aviation

SCOPE / COMPONENTS

New 7,545 sf General Aviation Executive Terminal with the following:

Lobby, cafe, multiple conference rooms, galley, laundry, training room, pilots lounge, and men's and women's locker rooms

Two new hangars with adjacent office space

Hangar 37 - 33,000 SF

Hangar 38 - 33,000 SF

Demo of existing Hangar

Mill and overlay existing ramp

Surface parking







ATLANTIC AVIATION PDK

CHAMBLEE, GEORGIA



SERVICES

Architecture, Planning

CLIENT

Atlantic Aviation

SCOPE / COMPONENTS

New executive terminal

New hangars

30,000 sf

Leasehold master planning

Construction manager





HANGARS

Our team has developed hundreds of thousands of square feet of hangars. Hangar door systems run the gamut in cost and quality. There are few things worse than getting the owner's multi-million-dollar aircraft stuck behind a hangar door because a two-dollar cotter pin failed. From the start, we get the details right, whether it's a Plain Jane storage hangar or a high-activity maintenance, repair, and overhaul (MRO) facility.

We know the NFPA 409 standards inside and out, including how to design hangars that will have low or no fire suppression costs, which can add more than fifty percent to the cost of your hangar. We'll make your construction dollars go farther with durable, attractive and cost-effective hangars.



SKY HARBOUR NATIONAL PROTOTYPE
MULTIPLE LOCATIONS NATIONALLY



SKY HARBOUR ADS
ADDISON, TEXAS



SKY HARBOUR APA
CENTENNIAL, COLORADO



SKY HARBOUR DVT
PHOENIX, ARIZONA



ATLANTIC AVIATION PDK - HANGAR O
CHAMBLEE, GEORGIA

ATLANTIC AVIATION PDK HANGARS K, L, & Q

CHAMBLEE, GEORGIA



SERVICES

Architecture, Planning

CLIENT

Atlantic Aviation

SCOPE / COMPONENTS

Three new storage hangars for Atlantic Aviation, demolition of 4 smaller / outdated hangars

Hangar K

- 15,500 sf hangar for a private corporate client
- 3,250 sf office

Hangar L

- 30,000 sf large storage hangar
- 3,400 sf support space sub-divided into leasable offices with a central kitchenette area

Hangar Q

- 26,240 sf hangar for a private corporate client
- 4,622 sf office, maintenance and storage space







SKY HARBOUR BNA

NASHVILLE, TENNESSEE



SERVICES

Architecture

CLIENT

Sky Harbour, LLC

SCOPE / COMPONENTS

New apron

Nine, 12,000 sf hangars, each with 1,600 sf of office

Office areas includes:

- Lounge
- Galley kitchen
- Restrooms





CORPORATE FLIGHT DEPARTMENTS

Corporations invest heavily in their corporate aircraft and in return expect crew and equipment to be prepared to safely complete every mission. Understanding the typical mission is key. Our team has developed corporate flight departments for more than 25 years. We understand our clients' need for efficiency, safety and privacy. We understand what business aviation is all about. From extremely large, international public companies to small, single-aircraft flight departments, designing the right facility to meet budgets and goals is critical.

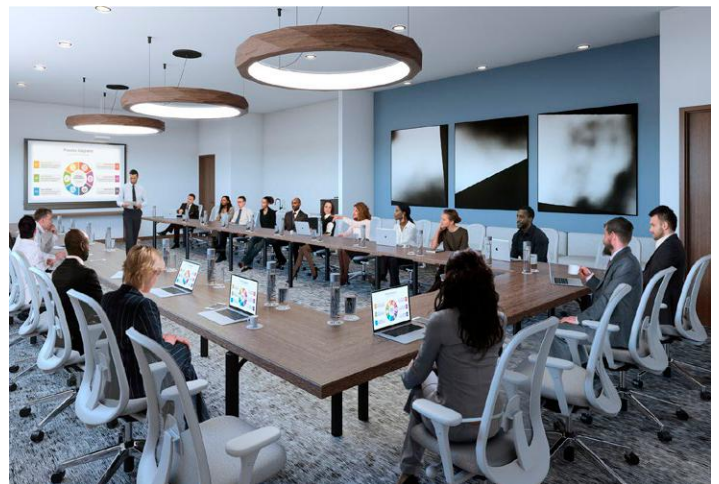
Passenger (PAX) support space is vital to many corporate facilities. Quiet, clean and tasteful spaces are critical to beginning and ending a successful flight. Our team finds the right balance between image, quality and cost. We offer solutions based on years of experience.



FTY CORPORATE FLIGHT DEPARTMENT
ATLANTA, GEORGIA



CORPORATE FLIGHT DEPARTMENT
ATLANTA, GEORGIA



PDK CORPORATE HANGAR
CHAMBLEE, GEORGIA



FTY CORPORATE HANGAR
ATLANTA, GEORGIA

FTY CORPORATE HANGAR

ATLANTA, GEORGIA



SERVICES

Architecture, Interior Design, Land Planning

CLIENT

Confidential Client

SCOPE / COMPONENTS

Fulton County Airport (FTY)

12,000 sf private corporate hangar

2,400 sf office

Lobby/reception

3 private offices

Conference room

Lounge

Galley kitchen







TRANSPORTATION

NBA has been designing transit facilities in cities across the U.S., including Los Angeles, Atlanta, Honolulu, Houston, Raleigh/Durham and Miami. We have become a valued resource for transit authorities and municipalities who are addressing critical urban issues through transit development.

One of primary reasons we are selected for transit projects is that we approach transportation design as a community-building opportunity. Our extensive experience in urban planning and mixed-use development gives us a true understanding of how transit design meets the needs of communities and how private developments can be transit-supportive to increase ridership and support smart growth.



GREYHOUND ATLANTA TERMINAL
ATLANTA, GEORGIA



ALBANY TRANSPORTATION CENTER
ALBANY, GEORGIA



BIRMINGHAM INTERMODAL FACILITY
BIRMINGHAM, ALABAMA



ATHENS MULTIMODAL TRANSPORTATION CENTER ATLANTA, GEORGIA



BECKLEY INTERMODAL GATEWAY
BECKLEY, WEST VIRGINIA



VERMONT / SUNSET STATION
LOS ANGELES, CALIFORNIA



NEWPORT NEWS MULTIMODAL STATION

NEWPORT NEWS, VIRGINIA



SERVICES

Programming, Visioning, Master Planning
Transit Oriented Development, Architecture

CLIENT

City of Newport News, Virginia

SCOPE / COMPONENTS

8,000 sf Amtrak Station and platform
Adjacent to PHF International Airport
Bus accommodations for Amtrak Thruway buses,
Hampton Roads Transit, intercity bus, and airport
shuttles
Connection to future Light Rail Station
Service Facility including Crew Base, Mechanical,
service platform and layover yard



