

Product
Catalog

PURE EARTH

by

UKU



MARKO KIKAS, FOUNDER OF UKU

UKU – TIMELESS NATURAL FINISHES

At UKU, we craft sustainable building and finishing materials from pure clay and lime, blending tradition with modern innovation. Our 100% natural products seamlessly enhance both contemporary and historic interiors, preserving craftsmanship while embracing scientific advancements. By refining age-old techniques in harmony with nature, we ensure their legacy for future generations.

Experience the beauty of nature in every detail.

SINCERELY YOURS,
MARKO KIKAS

PURE EARTH, NATURAL LIVING

WE ARE a producer of natural clay and lime plasters and paints, offering eco-friendly and sustainable solutions for construction and home décor.

OUR MISSION is to provide the purest natural building materials, creating healthier spaces where both people and nature thrive. We believe true luxury lies in sustainability.

WE CHERISH our planet as our home—breathing pure air, walking upon vibrant, unspoiled ground. Pure Earth is a gift, rich in color and texture, waiting to be explored and preserved.

WE AIM to foster a harmonious connection between humans and nature. By nurturing the Earth, we build a better, more sustainable future for all.

LET'S GET DOWN TO EARTH—TOGETHER.

TABLE OF CONTENT

CLAY: 5

CLAY PRODUCTS: 8
CLAY PAINT: 9
CLAY STUCCO: 13
CLAY MARMORINO: 15
CLAY DECORATIVE PUTTY: 17
CLAY DECORATIVE PLASTER: 19
CLAY RUSTIC FINISHING PLASTER: 23
PURE EARTH PLASTER: 27
HEMP-CLAY PLASTER: 29
RAMMED EARTH MIXTURE: 31
COMPRESSED EARTH BLOCKS: 33
MASONRY MIXTURE: 35
CLAY BONDING MIXTURE: 37

LIME

LIME PRODUCTS: 39
LIME PAINT: 45
LIME STUCCO: 49
LIME MARMORINO: 51
LIME DECORATIVE PUTTY: 55
MARBLE LIME PLASTER: 57
LIME GRASSELLO: 59
TADELAKT: 61
LIME RUSTIC FINISHING PLASTER: 63
UKUNAKS: 65
NHL PLASTER: 67

EXTRAS: 69

TROWELS
PIGMENTS
REED BOARDS AND MATS
FIBER GLASS MESH

CONTACTS: 72



CLAY

For centuries, clay has been a cornerstone of architecture, valued for its versatility, durability, and sustainability.

From ancient mud-brick dwellings to iconic structures like the Great Mosque of Djenne, clay has shaped civilizations and continues to be a vital material in modern construction.

Its natural thermal insulation enhances energy efficiency, while its ability to absorb and release moisture creates healthier indoor environments.

As the demand for eco-friendly building solutions grows, clay remains an indispensable choice—proving that traditional materials can offer the perfect balance of sustainability, functionality, and timeless beauty.



UKU CLAY PRODUCTS

Transform your interiors with UKU's 100% natural clay products, designed for well-being, sustainability, and effortless beauty. With incredibly low energy consumption, our clay plasters, putties, and paints bring nature's balance into your home.

Our clay finishes naturally regulate humidity to the optimal 40-60% range, creating a healthier indoor climate while preventing mold and improving air quality. Designed for easy application, they offer extended workability, making them perfect for both professionals and self-builders.

Customization is simple—our products can be tinted with pure clay powders, providing a stunning range of natural hues. Plus, clay plasters allow for unique textures and reliefs, adding artistic depth and character to any space.

Beyond aesthetics, UKU clay products are antibacterial, recyclable, and skin-friendly, ensuring a truly eco-conscious and comfortable environment. Rigorously tested, our plasters meet the German DIN 18947:2013-08 S II standard, guaranteeing durability and performance.

Choose UKU for timeless, natural interiors that breathe with you.

BENEFITS

 ANTIBACTERIAL AND MOLD-RESISTANT

 PRODUCED ON SOLAR ENERGY

 NO VOLATILE HARMFUL CHEMICALS

 BIODEGRADABLE

 RECYCLABLE

 SUITABLE FOR ALLERGY SUFFERERS

 HIGHLY BREATHABLE

 THERMOREGULATING

 MULTIPLE DIY FRIENDLY PRODUCTS

CLAY PAINT

UKU clay paint offers a rich, matte finish that adds depth and character. Our extensive range of shades comes from clay's own natural colors—no added pigments or synthetic dyes—ensuring an authentic and organic aesthetic. Completely odorless, it provides excellent coverage and a subtle, tactile texture for a refined, inviting look.

For a truly bespoke finish, unleash your creativity—blend different clay shades or mix in colored soils to craft a one-of-a-kind hue tailored to your space.

NORDIC-FAVORITE SHADES
IN TEXTURED AND SMOOTH FINISH



WHITE/TEXTURED
(NCS: S 0500-N)

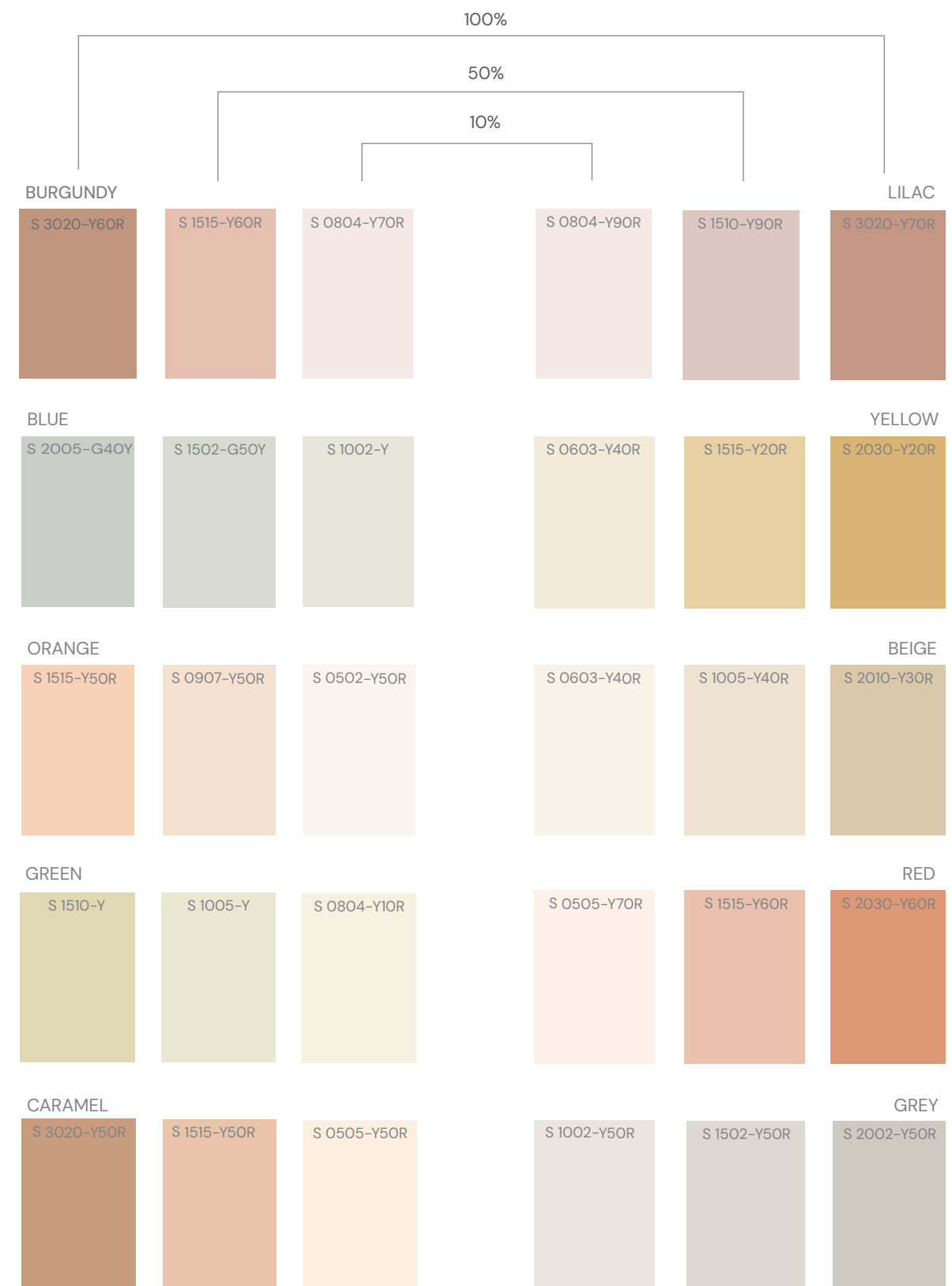


SNOW-WHITE/SMOOTH
(NCS: S 0300-N)

Packaging: 1 kg, 5 kg, and 10 kg buckets
Grain Size: 0–0.2 mm (fine) or 0–0.5 mm (as structural Marmorino paint)
Consumption: 200–400 g/m², depending on the number of layers and substrate evenness

UKU COLOR CHART FOR CLAY PRODUCTS

Presents natural tones that come alive in the light, revealing a rich variety of nuances. To make selection easier, the chart includes shade names along with corresponding NCS codes. **About application:** Bold brushstrokes soften as they dry, blending into your chosen tone.



Color Chart Applicability: Clay Paint, Clay Marmorino, Clay Stucco and Pure Earth plaster.
Important: Final color may vary based on application technique, surface texture, and lighting. We recommend testing a small area before full application.

UKU CLAY PAINT – NATURAL BEAUTY WITH A VELVETY TOUCH

UKU clay paint is a 100% natural, eco-friendly choice with a velvety matte finish and light texture. Made by blending different colored clays, it offers a rich palette of earthy tones, with the option to mix custom shades using natural pigments.

With excellent coverage, it enhances walls, ceilings, stoves, fireplaces, and ovens, adding warmth and rustic charm.



Clay paint allows surfaces to breathe, creating a soft, pastel effect that absorbs light rather than reflecting it.

Beyond traditional applications, UKU clay paint enables stunning, sculptural designs, seamlessly integrating into curved surfaces and organic forms. The result is a harmonious, elegant aesthetic that transforms your space.



CLAY STUCCO

Clay Stucco is a premium, 100% natural finishing putty that enhances interior spaces with elegance and luxury. Its rich Japan shade creates stunning, crystal-shiny surfaces that reflect light beautifully. Using specific techniques, it can achieve a mirror-smooth finish with versatile patterns, offering a high-end, customizable look.

Inspired by ancient Japanese methods and crafted in South Estonia, this fine putty transforms any room with a luxurious touch. Ideal for absorbent plaster and putty surfaces in dry interiors. Clay Stucco can be tinted with natural pigments for a personalized, custom finish.

CUSTOM-MADE SHADES



Packaging: Bucket of 1kg, 5kg and 10kg
Grain size: 0–0,2mm
Consumption: 400–600g/m²
Clay Color chart at page 7



Color: Gray 100%, Nero Roma 2% Finish: UKU Masters Photo: Terje Ugandi



Material: Marmorino semi-rustic Colour: Caramello 10% Finish: UKU Masters

CLAY MARMORINO

Inspired by the timeless techniques of Venetian artisans, Clay Marmorino captures the refined elegance of marble and natural stone.

With just a few thin layers, it effortlessly achieves a sophisticated matte or satin finish. Its adaptable nature allows for customized sheen levels, catering to diverse design aesthetics.

Beyond its rich clay tones (see page 10), it can be tinted with our selection of natural pigments, allowing for a fully customized, one-of-a-kind finish.

Crafted for durability, UKU’s Clay Marmorino boasts exceptional adhesion and strength, ensuring a long-lasting finish that maintains its beauty over time.

GALLERY OF FINISHING TEXTURES

POLISHED AND MIRROR SMOOTH

CARAMELLO 5%

SMOOTH

CARAMELLO 10%

SEMI-RUSTIC

CARAMELLO 10%

RUSTIC

TERRE 7%

Packaging: Bucket of 1kg, 5kg and 10kg
Grain size: 0–0,5mm
Consumption: 800–1000g/m²



CLAY DECORATIVE PUTTY

UKU clay putty creates a smooth, matte finish and allows for versatile surface designs, including textures, levels, and patterns. It serves as an excellent base for clay stucco and clay Marmorino finishes enhancing their natural beauty and texture effects.

Inspired by the aesthetics of wabi-sabi and antique plaster, UKU decorative putty allows for the creation of both sleek and textured surfaces, enabling you to craft unique textures and reliefs tailored to your special project.

GALLERY OF BESPOKE TEXTURES AND COLORS



Packaging: 20 kg
Consumption: 1.6–2 kg/m², depending on the evenness of the substrate
Coverage: 10–12.5 m²
Color: Both pure clay and lime paint colors can be applied to this putty, allowing for a customized color palette for your project.



CLAY DECORATIVE PLASTER

Ideal for all absorbent plaster and putty surfaces in dry interiors, UKU decorative plasters combine functionality with aesthetic appeal. Available in a range of clay colors, they allow effortless personalization to achieve the perfect tone.

Each shade comes in two distinct textures, offering versatility to match your design vision.



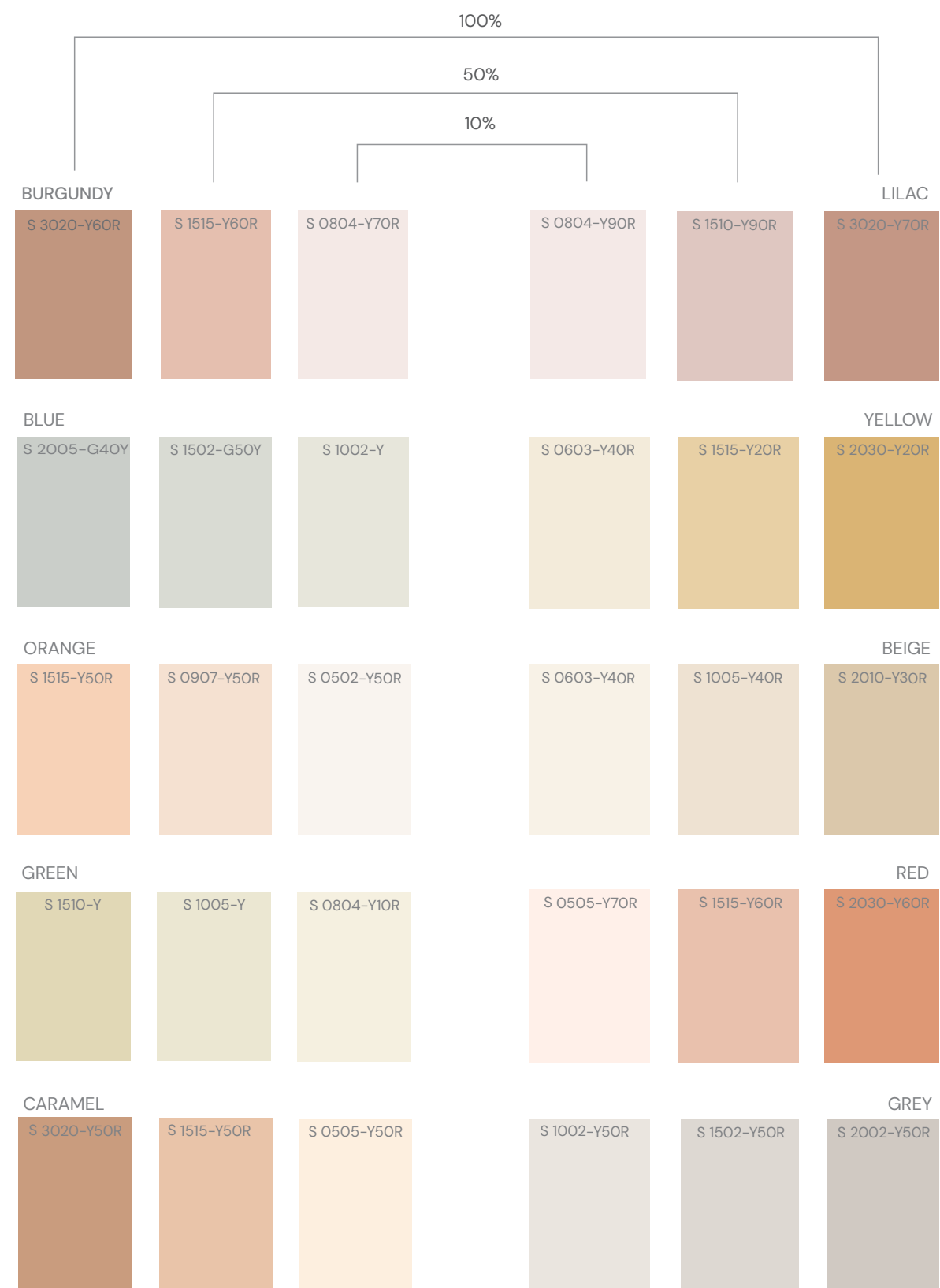
	Textured finish	Smooth finish
Packaging:	25kg bag	20kg bag
Consumption:	3,5-5kg/m²	0,85-2,5kg/m²
Grain size:	0-1mm	0-0,5mm

DECO COLOR AND DECO CHARTS ON THE CONTINUING PAGE

UKU COLOR CHART FOR CLAY PRODUCTS

Presents natural tones that come alive in the light, revealing a rich variety of nuances. To make selection easier, the chart includes shade names along with corresponding NCS codes.

About application: Bold brushstrokes soften as they dry, blending into your chosen tone.



Color Chart Applicability: Clay Paint, Clay Marmorino, Clay Stucco and Pure Earth Plaster.
Important: Final color may vary based on application technique, surface texture, and lighting. We recommend testing a small area before full application.

IN ADDITION TO THE PURE CLAY COLOR CHART WITH NATURAL TONES, WE OFFER THE DECO SERIES—A SELECTION OF ORGANIC COMPOUNDS FOR ADDED TEXTURE AND UNIQUE FINISHES.



BASIC TEXTURED WHITES & DECO BLACK



CLAY RUSTIC FINISHING PLASTER

These plasters are used to fill and level unevenness on the base plastered surface or to achieve a structural finish.

UKU rustic finishing plasters can also serve as base plasters on surfaces where minimal plaster thickness is desired.

Clay finishing plasters are suitable for plastering various surfaces in dry indoor spaces.

UKU's clay finishing plaster is made of high-quality clay and sand, specifically selected based on a special sieve curve, and includes the addition of cattail fiber.

COLOR AND TEXTURE CHART
WITH ADDED NCS CODES

S 5030-Y50R	S 3030-Y60R	S 5020-Y60R	S 4020-Y30R	S 4005-Y50R	S 3005-Y20R
					
DARK-RED	RED	BURGUNDY	BROWN	BLUE	GREY

Packaging: 25kg and 1000kg Big-Bag
Consumption: 7-10kg/m²
Grain size: 0-2mm



Material: Clay finishing plaster Color: Custom made red.
Added pigment: Ossido Rosso 1% / Blue Oltremare 0,6%
Finishing: Krohwin OU

A close-up photograph of reddish-brown soil or earth. A prominent vertical crack runs down the center of the frame, separating two slightly different textures of the earth. The surface is uneven, with small clumps and dark specks scattered throughout. The lighting is natural, highlighting the granular nature of the material.

NEW! PURE EARTH PLASTER

RUSTIC, EARTHY & RAW BEAUTY

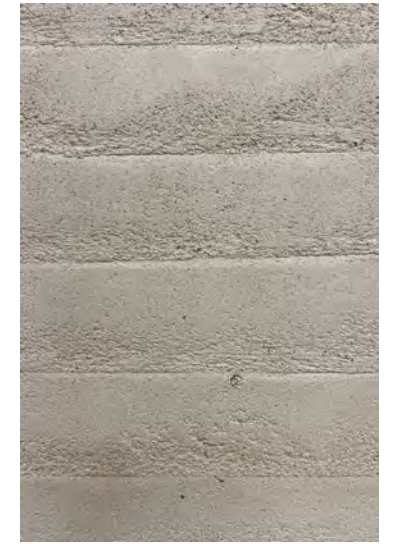
PURE EARTH PLASTER

Pure Earth plaster delivers a natural, rustic, and textured finish, creating an authentically raw, earthy aesthetic. Ideal for achieving a cracked effect and crafting durable surfaces, it is fully customizable to meet the unique needs of your project.

Each batch is made to order—no ready-made mixes—ensuring a perfect match for your specifications. With a wide selection of clay tones and pigments, you can achieve truly one-of-a-kind surfaces.

Available Colors and textures: Burgundy, Dark Red, Red, Brown, Gray, Blue—plus fully customizable shades with clay paints, pigments, and a variety of sands in different colors and grain sizes.

Consumption: 25 kg/m²
Packaging: 25 kg





HEMP-CLAY PLASTER

This plaster is typically used for leveling and filling base surfaces, as well as for building up the plaster layer. If desired, this layer can be left as the final rustic finish.

UKU's clay base coat plaster boasts excellent adhesion and surface strength, and can be used to design curved corners and various shapes.

The mixture used for clay base plaster incorporates various sands and includes hemp fibers from the stems of the hemp plant as an additive. Hemp fibers effectively bind moisture and contribute to the overall strength of the mixture.

A 2–3 cm clay plaster layer has been shown to create a microclimate that maintains humidity levels between 40–60%, which is considered to be the optimal range for human comfort and health. This is due to the ability of clay to absorb and release moisture in the air, preventing conditions that are too dry or too moist.

Packaging: 25kg bag, 1000kg Big-Bag
Grain size: 0–2mm & hemp shives and fiber
Consumption: 17kg / m² (10mm layer)

RAMMED EARTH

It is a clay mixture used for the construction of massive walls and major repairs of clay houses. The process of tamping the clay leaves characteristic horizontal stripes on the surface of the wall, which is also unique and eye-catching in interior design.

In addition to its sustainability and low environmental impact, rammed earth walls offer a distinct aesthetic appeal. They are often left unfinished, showcasing the natural texture and rich, earthy tones of the clay surface.

COLOR AND TEXTURE CHART
WITH ADDED NCS CODES



Packaging: 25kg,1000kg
Grain size: 0-8mm / 0-32mm
Consumption: 1500-2000 kg/m³



COMPRESSED EARTH BLOCKS /CEB

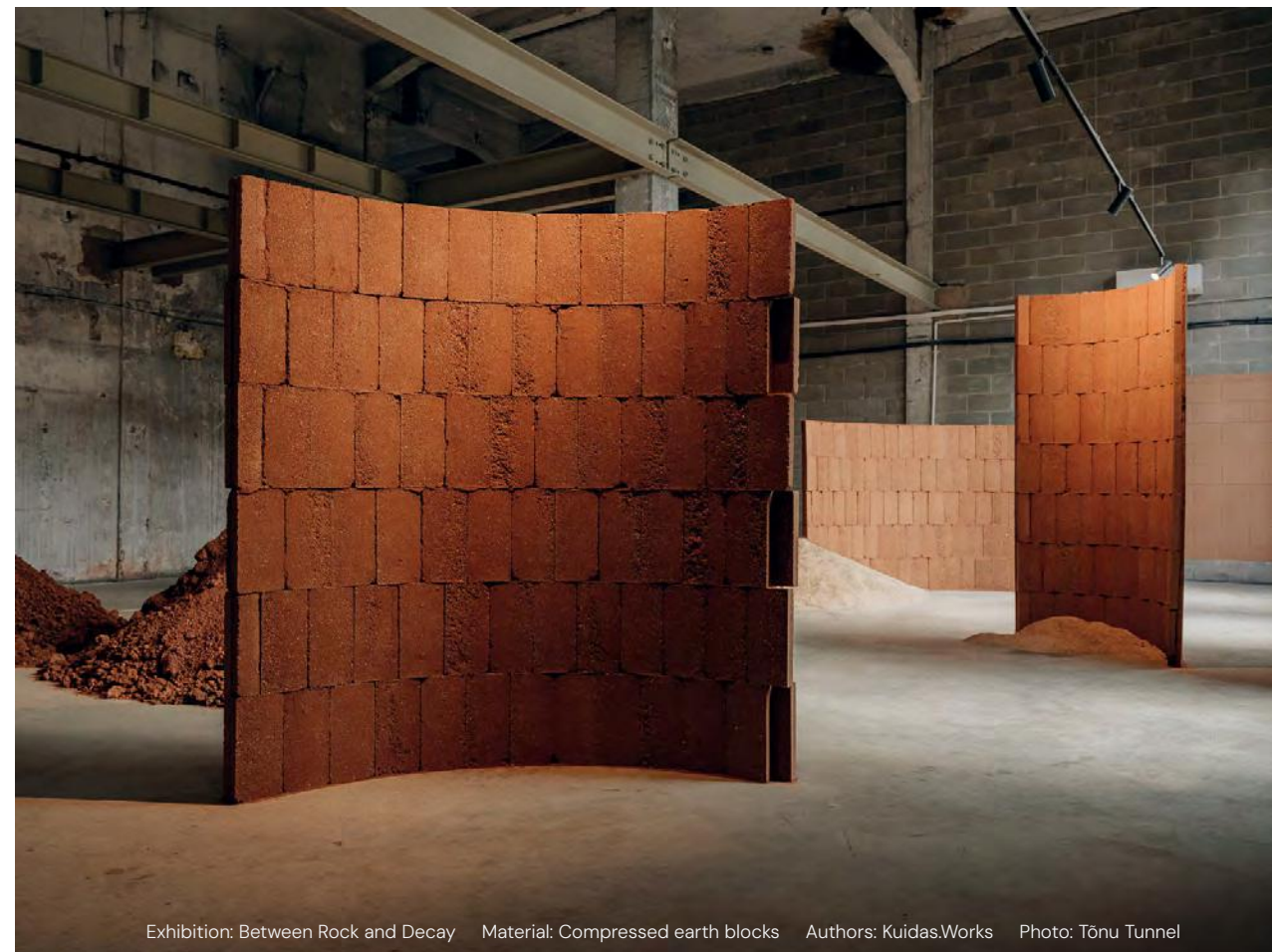
CEB, also known as unfired raw clay bricks, are a type of building material made from a mixture of clay and sand. They are formed by compressing the mixture into blocks without the need for firing or baking.

CEBs are commonly used in building construction for both load-bearing and non-load-bearing walls.

Compressed earth blocks are versatile and can be used for various applications beyond construction of walls.

They are suitable for laying ovens, stoves, fireplaces and thermal walls, thanks to their thermal properties and durability. Additionally, raw clay bricks are often used in the renovation of clay houses to fill larger openings in the wall, providing structural stability and enhancing the overall integrity of the building.

It's safe to say that the energy used to produce CEB blocks is among the lowest possible for building blocks.



Packaging: Euro pallet fits 120 blocks
Color: As shown on the following page.
Dimensions: 295x140x90mm; 295x140x70mm; 295x140x50mm
Grain size: 0–8mm
Volume: 2000kg/m³

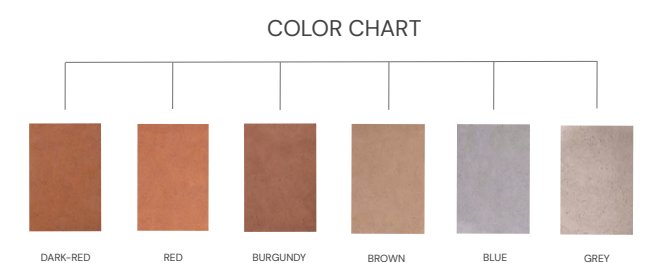
THE MASONRY MIXTURE

This mixture is ideal for laying and repairing the outer casings of strong and long-lasting fireplaces, stoves, chimneys and warm walls. It can also be used for repair work in indoor conditions, ensuring a durable finish.

This versatile mixture is suitable for laying both raw clay bricks and fired bricks, providing a strong bond and stability to the construction. It can also be used for filling pot stones, which are commonly used in the construction of fireplaces, stoves, and chimneys.



UKU's oven mixture is particularly unique as it is made without cement, offering a 100% natural and recyclable material option for oven construction. This makes it an environmentally friendly choice for those who prioritize sustainability.



Packaging: 25kg bag
Grain size: 0–2mm
Consumption: 0,6–1 kg per stone



COB CLAY MIX

This mix is a popular building material that is often used for constructing houses, creating building blocks, and adding curved shapes and corners to a wall surface. This mixture is usually made of clay, sand, straw and water, which are mixed together to create a mass that can be shaped and molded as needed.

Cob is ideal for use in the renovation of clay houses, as it can be used to fill larger openings and cracks in the wall, much like raw clay bricks. The mixture provides good thermal mass, making it an energy-efficient option for construction.

Overall, cob is a versatile and sustainable building material that offers many advantages to builders and homeowners alike. Its natural composition and ability to be shaped and molded make it a popular choice for renovation and construction projects.

Packaging: 25kg, 500kg, 1000kg
Grain size: 0–8mm & straw
Volume: 1800m³



CLAY BONDING MIX

Clay bonding mixture, also known as clay adhesive mixture, is commonly used in renovating clay walls. It is applied as a thin layer over the entire surface before plastering or filling. The purpose of the adhesive mixture is to provide a strong bond between the existing clay surface and the new plaster or fill material.

Typically, the adhesive mixture is made from a combination of clay and sand. The addition of flax is often done to reinforce the mixture. Flax fibers can help improve the strength and durability of the bonding material.

The clay adhesive mixture ensures better adhesion between the layers of the wall, allowing for a more stable and cohesive result.

Cob and bonding mixtures have been developed specifically for the renovation of historical clay buildings.

Packaging: 25kg, 500kg, 1000kg
Grain size: 0–4mm & flax
Consumption: 3,5–5kg/m²



LIME

Lime has a rich history of use in building practices, dating back centuries. In ancient times, lime was widely utilized in construction, from the Greek and Roman civilizations to medieval European architecture. Its versatility allowed for the creation of durable and aesthetically pleasing structures. Lime mortar was commonly used to bond stones and bricks together, resulting in sturdy and long-lasting buildings.

In contemporary building practices, lime continues to play a significant role. It is used for a variety of purposes, including plastering, rendering, and as a base for paints. Lime-based plasters offer excellent breathability and moisture management, making them suitable for historic preservation and eco-friendly construction.

The unique properties of lime, such as its flexibility, strength, and sustainability, make it a valuable material in both historical restoration and modern construction. Its enduring popularity is a testament to its reliability and adaptability over time.



Project: Lilleoru School Material: Natural Hydraulic Lime plaster Photo: Gabriela Urm

LIME FINISHING MATERIALS

Lime finishing materials are well known for their excellent breathability and moisture regulating ability, making them a popular choice for damp rooms and facades. Lime plasters are also eco-friendly and have a low carbon footprint, making them a sustainable option for construction and renovation projects.

In addition, lime-based finishes are a great choice for hospitals, spas, hotels, and public spaces due to their natural and non-toxic properties. Lime plasters do not release harmful substances into the air and have a natural ability to regulate humidity levels, which can help maintain a healthy indoor environment.

Smooth lime-based finishes are also a great option for shower corners and high-contact water surfaces due to their ability to resist moisture and prevent mold growth. Furthermore, the versatility of lime products allows for the creation of various surface finishes, textures, and modern cloudy effects for a unique and personalized look.

Extra properties of lime finishes

- DIY friendly
- Healing
- VOC-free
- Antistatic
- Allergy free
- Antibacterial
- Binds carbon dioxide during carbonization
- Helps to keep rooms cool in summer and warm in winter

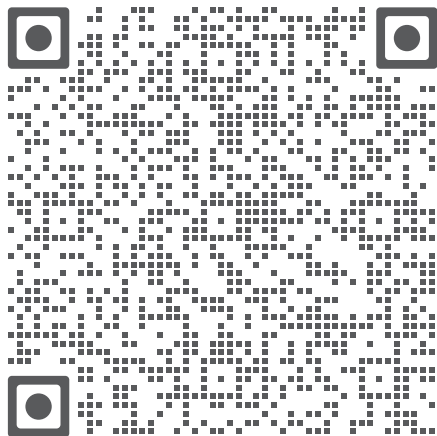
UKU COLOR CHART FOR LIME PRODUCTS

We strongly advise that you read this section thoroughly for important information.

The provided color chart on the side page serves as a comprehensive guide to UKU's most popular lime colors.

It is important to note that while this chart applies to all of our lime products, variations in color may occur based on the nature of the product and the specific application technique used.

To access a complete color chart, we invite you to scan the QR code below. This will direct you to our webpage's full-color map, offering a wider range of lime color options for your consideration.



COMPLETE COLOR CHART

FEATURING NATURAL TONES THAT SHIFT AND COME ALIVE WITH CHANGING LIGHT.

Note: Includes NCS-coded shade names for accurate reference. Lime-based colors are naturally reactive to light and shadow, which may result in perceived tonal shifts depending on the lighting conditions and surface texture.



PS! Bold brush- and trowel strokes soften to your chosen color as they dry.



LIME PAINT

Lime paint is a sought-after choice for its ease of application, excellent coverage, and elegant matte finish that enhances depth and character. Naturally white, it can be customized with pigments and clays, offering a rich palette of color possibilities.

Beyond its aesthetic appeal, lime paint stands out for its natural composition, sustainability, and exceptional durability. A perfect blend of beauty and eco-consciousness, it's ideal for those who value both timeless style and long-lasting quality.

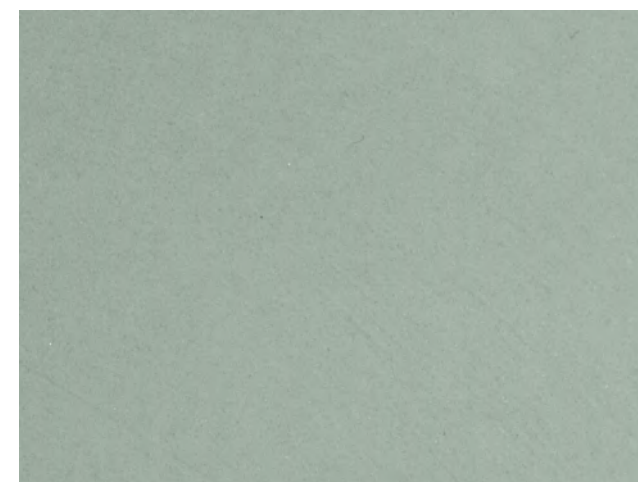
At UKU, we offer lime paints in two distinct textures: **Lime Paint** and **Marmorino Paint**.

Lime Paint creates a subtle, smooth finish, adding a delicate touch of elegance. Marmorino Paint, enriched with marble stone, delivers a more structured and textured look, bringing depth and character.

Whether you prefer a sleek or textured effect, our lime paint options provide the perfect solution for your project.

SMOOTH AND TEXTURED FINISH IN OLIVE 10%

LIME PAINT/SMOOTH



MARMORINO PAINT/TEXTURED



Packaging: Bucket of 1 kg, 5 kg and 10 kg

Grain size: 0-0,2mm Lime paint

0-0,5mm Marmorino paint

Consumption: 200-400g/m²

The final appearance of the finish depends on the number of paint layers and the evenness of the substrate.

LIME PAINT

Embrace the transformative allure of UKU's Lime Paint with the Cloudy Effect. Through the lens of these well curated spaces, the versatility and enchanting appeal of our lime paint come to life.

Notice how the Cloudy Effect creates a dynamic interplay of light and shadow, accentuating the natural flow of the minimalist kitchen, where the refined marble surfaces and warm wooden textures resonate with the walls velvety embrace. Each stroke of our lime paint introduces a soft depth that complements the sleek modern fixtures and the timeless elegance of the woven bar stools.



The dining area, with its sculptural furniture and understated elegance, benefits from the Cloudy Effect's textured nuance, offering a canvas where natural light dances across the room, enhancing the space's organic aesthetic. The paint's cloudy texture against the smooth, flowing lines of the decor creates a symphony of contrasts that is as pleasing to the eye as it is to the soul.



UKU's Lime Paint with the cloudy effect is designed to be the silent hero of interior design, supporting and enhancing the architectural language of the space without overpowering it. It is the choice for those who seek to create environments that are both visually stunning and atmospherically peaceful.

Incorporate the elegance of our Cloudy Effect into your interior design, and witness the transformation into spaces that exude sophistication, warmth, and a harmonious balance. With UKU, elevate your walls to art that breathes life into your home.



LIME STUCCO

A glossy finishing plaster that allows for the creation of a remarkably smooth surface, often resembling a mirror-like finish.

When mixed with pigments, lime stucco offers a wide range of color options, allowing for endless possibilities in creating different shades.

Primarily designed for indoor applications, particularly on lime and mineral plasters, lime Stucco excels in damp areas like bathrooms. Its durable, moisture-resistant properties ensure long-lasting aesthetics even in high-humidity environments.

Embodying the essence of craftsmanship, Stucco mesmerizes with its silky surface, effortlessly crafting luxurious patterns that elevate any space. Remarkably, achieving this effect requires only a few thin coats, highlighting the product's efficiency and effectiveness.

UKU Lime Stucco seamlessly blends artistic beauty with functionality and sustainability, making it the ideal choice for discerning homeowners and professionals alike.

Packaging: Bucket of 1kg, 5kg and 10kg
Grain size: 0–0,2mm
Consumption: 0,4–0,6kg/m²

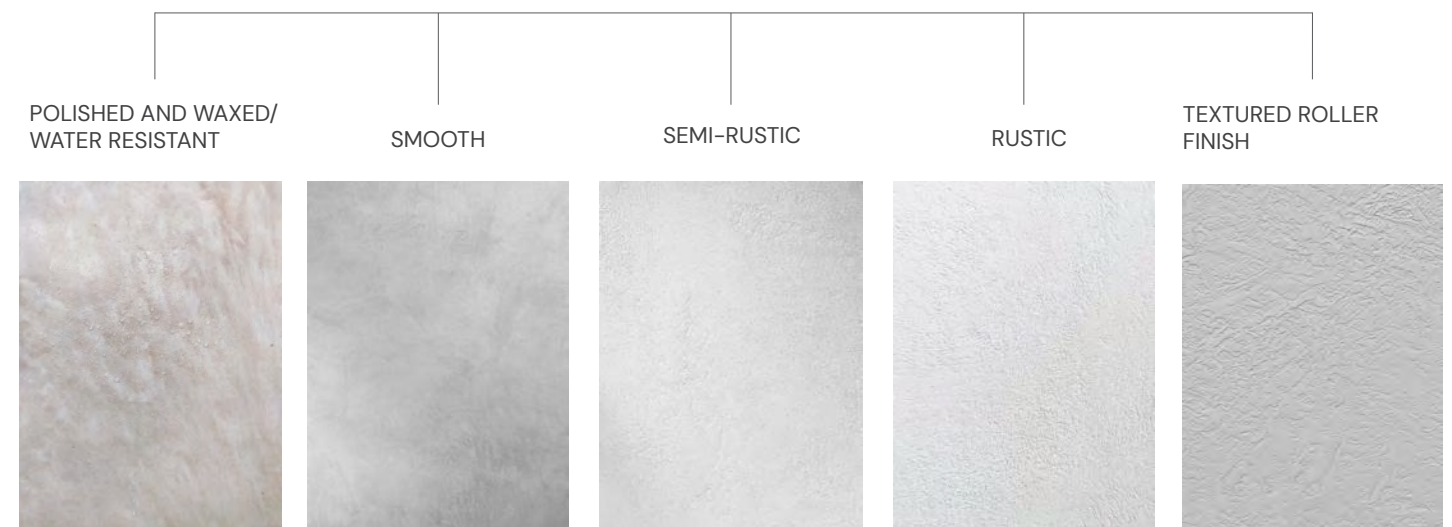


LIME MARMORINO

A User-friendly product that offers several advantages. Its ease of installation makes it accessible to everyone, allowing even those without professional experience to successfully apply it. The strength of UKU Marmorino enables it to cover large surfaces, making it suitable for projects that require extensive coverage.

Marmorino has a rich history dating back to the Roman era and its popularity grew during the Renaissance period. During this time, the focus on aesthetics was essential, making marmorino a beloved addition to many Italian Renaissance buildings.

GALLERY OF FINISHING TEXTURES IN GREY SHADES



Packaging: Bucket of 1kg, 5kg and 10kg
Grain size: 0-0,5mm
Consumption: 1-1,5kg/m²

LIME MARMORINO
AT LENNART MERI TALLINN AIRPORT

Unveiling a harmonious fusion of tradition and innovation, Lime Marmorino embodies the exquisite craftsmanship synonymous with artisanal plastering techniques. Its refined texture exudes a sense of luxury, adding depth and character to the interior setting.

Beyond its aesthetic appeal, Lime Marmorino stands as a testament to resilience.



Designed to withstand the rigors of daily use, this exquisite finish is tailor-made for spaces that demand nothing short of excellence. Whether adorning the walls of bustling commercial hubs or residential sanctuaries, its unparalleled durability ensures enduring performance, even in the face of constant activity.

Project: Lennart Meri Tallinn Airport
Material: Lime Marmorino/white
Architect: KAMP Arhitektid
Photo: Tõnu Tunnel
Finish: Krohvikoda



Lime Marmorino is highly versatile, complementing both modern and classic interiors. Its subtle elegance allows for creative expression, seamlessly adapting to any design style.

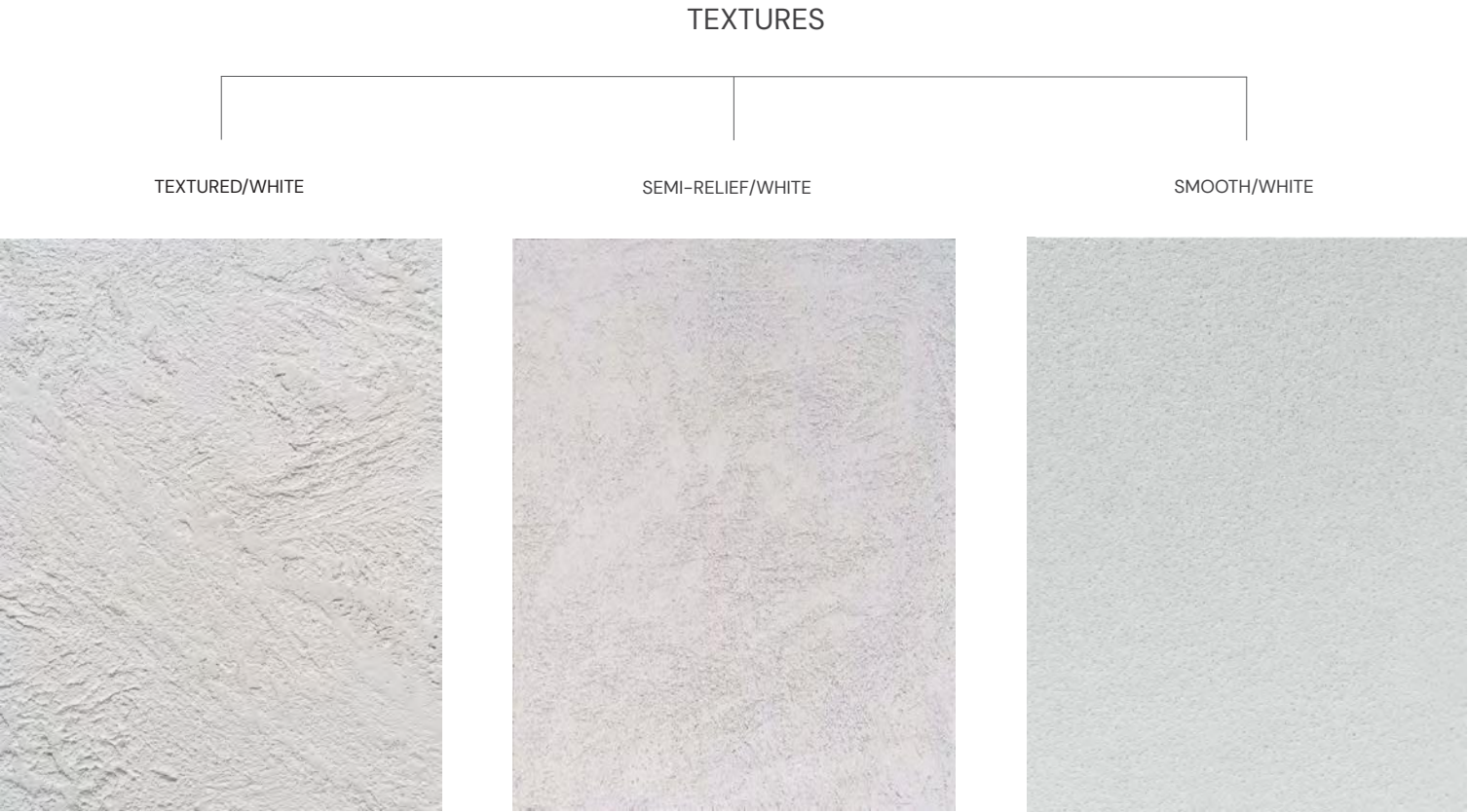
LIME DECORATIVE PUTTY

Lime decorative putty is a highly versatile finishing material that creates a smooth, matte surface. While perfect for sleek finishes, it also allows for rustic textures and reliefs.

Additionally, it serves as an excellent base for finishing materials such as lime stucco, lime marmorino, and grassello, providing the smooth foundation needed for their application.

Color: white. Can be tinted with pigments
Grain size: 0–0,5mm
Consumption: up to 1,6kg/m² (in 3 coats)
Packaging: 20kg bag

Lime decorative putty is ideal as a base for lime grassello, stucco, and marmorino finishes or as a standalone coating. It allows for diverse textures and reliefs and can be tinted with UKU’s natural pigments.





Material: Marble lime plaster. Color: White.

MARBLE LIME PLASTER

Versatile and durable building material that offers excellent adhesion and surface strength, making it perfect for even the most challenging surfaces. Our selection includes two fractions, providing options for both thinner and thicker applications. With its exceptional plasticity and ease of installation, it has become UKU's top choice plaster for achieving the highest quality finishes available today.

This plaster also boasts exceptional adhesive properties, making it an excellent choice for contemporary gypsum boards. Its proven durability and strength have been tested in extreme climates, including Arabic heat and Nordic crispness. Regardless of the climate, marble lime plaster provides a seamless integration with modern construction materials, delivering a stunning and long-lasting result.

Marble lime plaster has an exceptional adhesion strength, reportedly being five times stronger than the standard adhesion strength required for lime plaster.

FINISHING TEXTURES

TEXTURED FINISH



SMOOTH FINISH



Packaging: 20kg bag
Consumption: 3,5-5kg/m²
Grain size: 0-1mm

GRASSELLO-EXCLUSIVE TRANSLUCENT EFFECT AND MIRROR-SMOOTH FINISH

GALLERY OF BESPOKE GRASSELLO COLOR COMBINATIONS

LIME GRASSELLO

A Timeless Classic Inspired by Italian Architecture. Discover the elegance and rich history of Venetian plaster with UKU Lime Grassetto, also known as Venetian plaster, renowned for its centuries-old tradition in Italian architecture.

Crafted from slaked lime putty mixed with fine marble dust, UKU Lime Grassetto boasts a soft, polished texture that creates a luminous, mirror-like finish. This ultra-smooth surface offers depth and vibrancy, with subtle color variations adding to its allure. Known for its high gloss and sophisticated appearance, Grassetto finishes elevate any space, imparting an elegant atmosphere.

Thanks to its ultra-fine structure, UKU Lime Grassetto allows for thin layers to be applied on walls, enabling the creation of cloudiness and allowing different colors to shine through each other.

Combining the elegance of unique patterned textures with durability and environmental friendliness, UKU Lime Grassetto enhances visual impact with its high gloss characteristic, adding depth and warmth to spaces. Experience the luxury and timelessness of UKU Lime Grassetto, an ideal choice for creating luxurious and timeless interiors.

Packaging: Bucket of 1kg, 5kg and 10kg
Grain size: 0-0,02mm
Consumption: 0,2-0,3 kg/m²



TADELAKT

Inspired by traditional Moroccan craftsmanship and made from 100% natural ingredients, UKU Tadelakt offers a seamless, waterproof, and highly durable finish reminiscent of natural stone.

Its unique composition allows for effortless application on curved surfaces, niches, and reliefs, enabling endless design possibilities. The plaster is polished using traditional techniques with stones and olive oil soap, resulting in a striking, water-repellent surface that embodies true artistry.

UKU Tadelakt comes as a white dry lime mixture, requiring only water. By adding pigments, an infinite range of custom shades can be achieved, making each project truly one of a kind.

Combining elegance, durability, and tradition, UKU Tadelakt is the perfect choice for creating smooth, seamless, and visually stunning interior finishes.

Packaging: Bucket of 2,5kg, 10kg and 20kg
Grain size: 0–1mm
Consumption: 3–4 kg/m²





LIME RUSTIC FINISHING PLASTER

Lime Rustic Finishing plaster is a traditional, historical plaster, renowned and smart choice for attaining a better indoor climate and improving the fire resistance of structures.

Our UKU lime finishing plaster is ideal for both interior and exterior use, including damp rooms, making it an excellent choice for any application.

UKU lime finishing plaster is an excellent choice for those who value quality, durability, and the ability to create various thicknesses of layers for a rustic finish. Lime plaster has been used for centuries and is known for its strength and longevity.

With UKU lime finishing plaster, you can expect a strong and durable finish that can withstand the test of time. Additionally, the flexibility to adjust the thickness of the layers allows for creative possibilities in achieving the desired aesthetic outcome.

Whether you prefer a smooth and sleek finish or a more textured and rustic appearance, UKU lime finishing plaster can provide the versatility to meet your preferences. It is a high-quality option for those who appreciate the craftsmanship and lasting beauty of their walls.

Packaging: 25kg bag, 1000kg Big-Bag
Grain size: 0–2mm
Consumption: 7–10kg/1 m²



Photo and application: Lauri Nagel

Packaging: 25kg bag, 500kg Big-Bag,1000kg Big-Bag
Grain size: 0–4mm
Consumption: 17kg / m² (10mm layer)

UKUNAKS BASE COAT

Our lime base coat plaster is the perfect solution for plastering, filling, and leveling softer substrates like wood, reed mats, boards, clay walls, and straw bale buildings. Crafted with an Air Lime CL 90 binder and without cement additives, this plaster boasts exceptional quality.

What sets our Lime Base Coat Plaster apart is its composition, containing 40% limestone sand. This unique blend provides unparalleled plasticity, ensuring ease of application, while also offering resilience against diverse weather conditions.

For indoor projects, we recommend augmenting the plaster with 25% of UKU's clay base coat. This infusion enhances plasticity and workability, facilitating smoother application processes.

Our Lime Base Coat Plaster is particularly advantageous for repairing old lime plaster, laying bricks or stones, and prepping walls for further embellishment. Its robust formulation promises durability, withstanding wear and water damage admirably. Whether it's facades or washrooms, this plaster delivers a strong and long-lasting finish.



Inspired by traditional recipes, we have created modern lime products that have been tested according to EN 998-1 standard.

HYDRAULIC LIME PLASTER

An excellent choice for a variety of substrates that require a mixture with hydraulic properties. At UKU, we use NHL 3.5 lime binder to create this type of plaster. It is particularly well-suited for substrates like rock foundations and plinths that have a non-absorbent surface quality, thanks to its specific characteristics and ability to regulate moisture. In addition, it has the capability to carbonate in moist conditions.

At UKU, we pride ourselves on crafting our hydraulic plaster mixes using 100% natural ingredients. We draw inspiration from ancient traditions to ensure the highest quality results. Our NHL 3.5 plaster is specifically designed to meet the needs of diverse substrates, particularly in situations where stronger properties are required due to challenging weather conditions.

By choosing UKU and our NHL 3.5 lime binder, you can have confidence in using a product that combines traditional knowledge with modern expertise. This results in a plaster that delivers exceptional performance, durability, and adherence to the highest standards of quality

Packaging: 25kg bag, 1000kg Big-Bag
Grain size: 0–4mm
Consumption: 17kg / m²



Project: Mooste manor renovation Material: NHL marble lime plaster facade, lime paint finish Photo: Indrek Kerbo

EXTRAS SECTION

At UKU, we take pride in offering a thoughtfully curated selection of natural building materials and tools in our Extras section. These materials and tools have been carefully chosen to meet the highest standards of quality and sustainability. At our shop in Mooste, we proudly provide customers with an extensive selection of top-notch tools.



High-quality Japanese trowels, a variety of brushes made with natural fibers. Additionally, we offer our signature ceramic stones designed specifically for achieving a flawless Tadelakt finish.

At UKU, we offer a diverse selection of Italian-origin pigments. All of our natural white paints and plasters can be customized and tinted to meet your specific preferences. Choose from our extensive range of pigments for a truly personalized finish!



Reed board serves two distinct purposes – firstly, as a sturdy baseboard for plaster applications, and secondly, as a stylish and eye-catching decorative board for interior design projects. Our reed boards are crafted with the highest quality materials.

With of boards: 75cm and 150 cm
Reed board 1.5m² / board, 2.5cm thick (0.75 x 2m)
Reed board 1.5m² / board, 5cm thick (0.75 x 2m)



Thin reed mat for plastering: 10m² / roll (1.6 x 6.25m)

Thin reed mat, constructed entirely from 100% natural reed, provides an ideal foundation for plaster applications. Expertly sewn together in parallel using a thin stainless wire, this reed mat guarantees durability and strength. Whether used indoors or out for walls and ceilings or outdoors for walls, the versatile nature of our reed mat ensures suitability for a range of applications, providing a reliable and attractive solution.

Fiberglass mesh is specifically designed for reinforcing plaster surfaces, both indoors and on facades. Its main purpose is to significantly reduce the risk of cracks in the plastered surface over time.

Fiberglass mesh 5.5 x 5.5mm	Fiberglass mesh 11 x 11mm
58g/m2	105g/m2
Mesh width – 100cm	Mesh width – 100cm
Meters in roll – 100m (100m²)	Meters in roll – 50m (50m²)



Clay board saves time on plaster installation and offers strength and valuable clay properties.

Dimensions: Heavy board
16 mm 1250 x 625mm [0,781m²] – 23kg/m²
22 mm 1250 x 625mm [0,781m²] – 32kg/m²

CHOOSING UKU

UKU's natural finishing materials is a mindful and sustainable way to design and build homes and buildings that will create a better present and future for generations to come. Here are some reasons why:

Health Benefits: UKU clay and lime products are natural, non-toxic materials that are free from harmful chemicals and synthetic additives (VOC free). When used as finishing materials on the walls and ceilings, they improve the indoor air quality by regulating humidity levels and reducing the growth of mold.



Energy Efficiency: Our clay and lime products have excellent insulation properties, regulating temperature indoors and keeping the space comfortable, reducing the dependency on artificial heating and cooling systems. By using these natural materials, you can save energy and reduce the impact on the environment.

Durability: Clay and lime are two natural building materials that have been used for thousands of years and have proven to be durable over time. Choosing such natural building materials is a wise decision as it minimizes the need for frequent repairs and replacements, resulting in significant cost savings in the long term. Moreover, opting for natural building materials like clay and lime is a sustainable choice that helps protect the environment and reduces our carbon footprint.

...

Earth to earth! We believe in the Nature's way of saying 'what comes from the ground goes back to the ground'.

Aesthetic Appeal: Natural finishes like clay and lime decorative plasters have an alluring and unique texture that cannot be replicated by synthetic materials. They provide a feeling of warmth, comfort, and serenity that promotes well-being and harmony. They also come in various earthy natural tones that complement any architectural design.

Environmental Sustainability: UKU's products are natural, low-impact materials that are renewable, carbon-sequestering, and biodegradable. They are sourced from a mix of natural sources, including clay, aggregates, and water, making them a sustainable choice for construction.

Guidance: We specialize in helping you find the perfect plastering system for your base surface. Our team is dedicated to finding the right surface structures and preferred tones to enhance your project. We offer personalized guidance and support to ensure your satisfaction with the final result.

By choosing natural finishing materials such as clay and lime products, we can commit to sustainable and eco-friendly building practices that promote the health and well-being of the occupants. It is a small yet significant step towards building a better present and future for ourselves and for the generations to come.

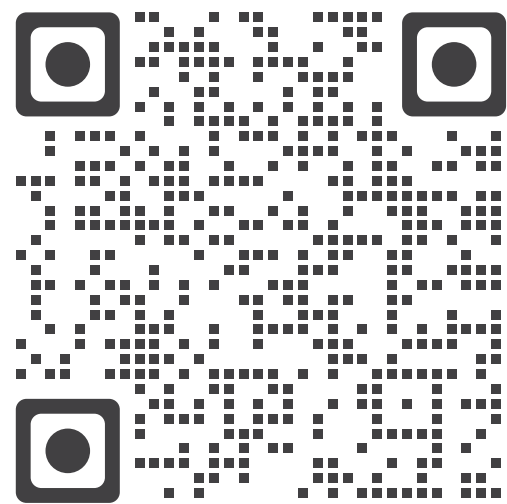
Whether you prefer to shop online or visit our showrooms, we are committed to providing you with exceptional service and the highest quality natural building materials and tools. We look forward to serving you at UKU.

To explore our full range of products and find more information, we welcome you to visit our online shop at www.uku.eu. Our website provides detailed descriptions and images of each item, helping you make informed decisions.

The information about our partners locating in the world are listed on our web page.

We highly recommend visiting our Estonian showrooms located in Tallinn and Mooste if you are interested in becoming a partner and learning more about our products. Our showrooms provide a unique opportunity to see our products firsthand and receive personalized assistance from our friendly staff. They will be delighted to answer your questions, provide expert advice, and help you choose the right materials and tools for your project. We believe that an in-person visit to our showrooms will provide you with the best experience and ensure that you have all the information you need. We look forward to welcoming you!

Scan the following QR code to access our precise product information and installation videos.



CONTACTS



OTT ORISSAAR
SALES MANAGER
UKU TALLINN

Always ready to help and support in different kind of decisions that have to be made in building with UKU's natural finishing materials. He knows what he talks about as he's home is finished with UKU's natural products.

Tel. +372 5620 7708
tallinn@uku.eu



TRIIN EENSAAR
SALES MANAGER
UKU MOOSTE

Triin manages both local and export sales, ensuring that all customer inquiries are addressed promptly and efficiently. She works closely with clients to find practical solutions, maintaining a customer-focused approach. Her positive energy and enthusiasm make her a valued member of the team.

+372 5650 5505
info@uku.eu



MARKO KIKAS
FOUNDER OF UKU

Marko has managed to inject the knowledge and experience inherited from his father and grandfather from clay construction and many inspirational trips into his company. Marko is a visionary who has created a successful clay soil company – Saviukumaja.

+372 5660 0811
marko@uku.eu



INDREK KERBO
TECHNICAL ADVISOR

Indrek takes on a varied role in the company, focusing on consulting, assisting with IT solutions, and supporting different aspects of the business. He is always ready to talk about UKU's products and to advise and help those who want to renovate their home or plan on building a new house.

+372 5304 0157
indrek@uku.eu

UKU`S SHOWROOMS IN ESTONIA



UKU MOOSTE
Mõisahoovi tee 5, Mooste, 64616, Põlva
county, Estonia
Tel. +372 56 505 505
info@uku.eu

Visit the UKU showroom in Mooste.
Entrance from the front of the building
on the side of the parking lot.

Opening hours
M-F: 08.00 – 17.00



UKU TALLINN
Peetri tee 2, Peetri, 75312 Harju county,
Estonia
Tel. +372 5620 7708
tallinn@uku.eu

Visit the UKU showroom in Tallinn.
Enter through the door between the
mill and the cafe.

Opening hours
M-F: 10.00 – 16.00 (other times by
agreement)

We hope that our product selection and helpful resources have met your expectations. Please feel free to reach out to us for any further questions or assistance. Thank you!