

Easy Concentration & Analysis of Cigarettes by MonoTrap - Thermal Desorption

Screening analysis of cigarettes' compounds using MonoTrap RGC18TD containing graphite carbon. No need for pre-conditioning with MonoTrap for TD.

Protocol

2pcs of Cigarettes, 2 different kinds

Unwrap the cigarettes and put the leaves into a vial

Head Space Sampling
MonoTrap RGC18TD x 1 pcs

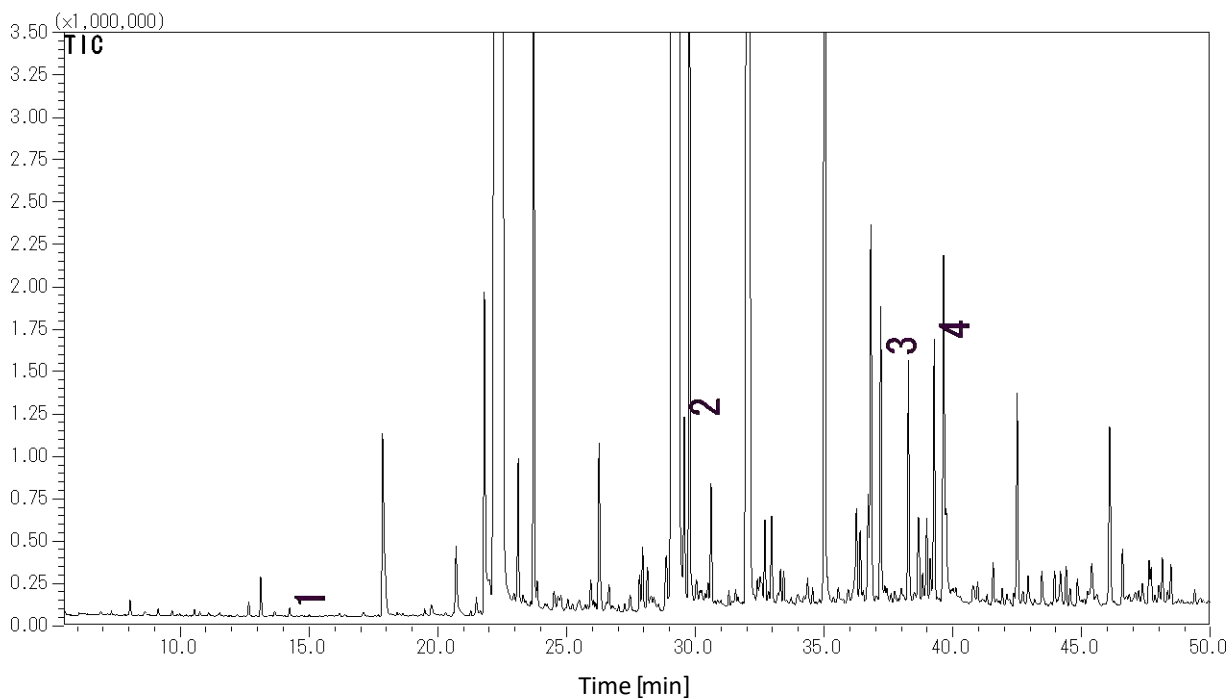
At 60 °C for 90 mins



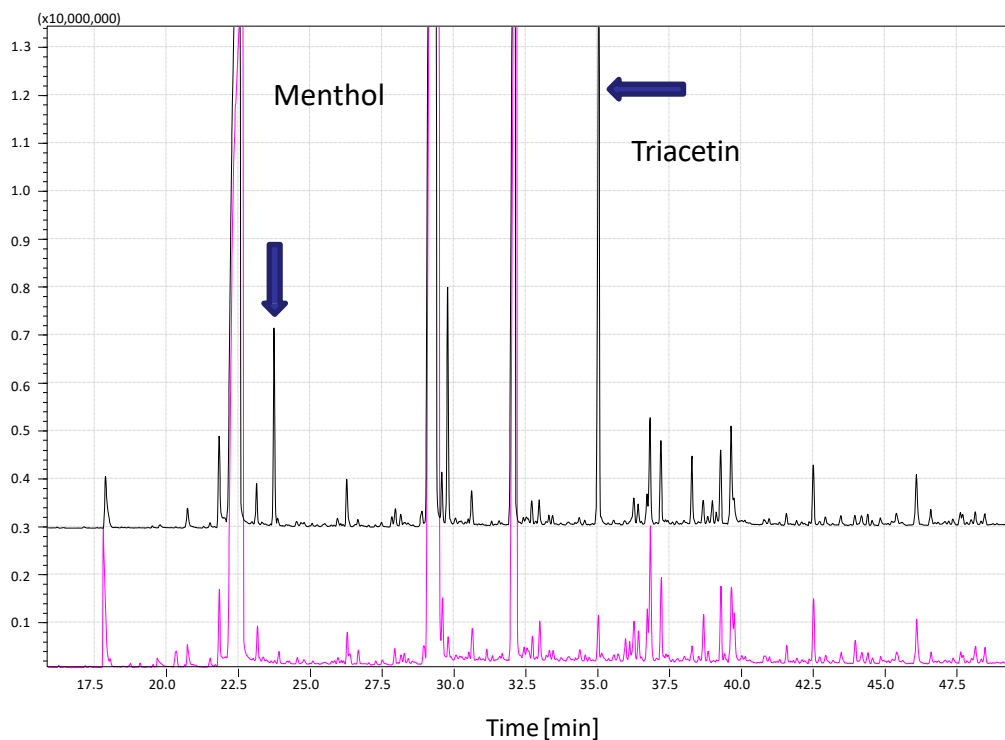
Trapping image

TD/GC/MS

Cigarette A



1. 6-Methyl-5-heptene-2-one
2. *trans*-Geranylacetone
3. Megastigmatrienone
4. Megastigmatrienone



Cigarette A

Cigarette B

GC Conditions

System	: GC/MS-Thermal Desorption (T-Dex II)
Column	: InertCap Pure-WAX 0.25 mm I.D. × 30 m, df = 0.25 μm
Col.Temp.	: 40 °C (5 min) - 4 °C/min- 250 °C
Carrier Gas	: He 1mL/min (constant flow)
Desorb Temp.	: 200 °C
Time	: 5 min
Flow	: 2 mL/min
Split	: Splitless
Cryo Trapping	: -160 °C
Injection Temp.	: 250 °C
Detection	: MS Scan (<i>m/z</i> 40 - 600)

GL Sciences disclaims any and all responsibility for any injury or damage which may be caused by this data directly or indirectly. We reserve the right to amend this information or data at any time and without any prior announcement.

GL Sciences, Inc. Japan

22-1 Nishishinjuku 6-Chome
Shinjuku-ku, Tokyo,
163-1130, Japan
Phone: +81-3-5323-6620
Fax: +81-3-5323-6621
Email: world@glsc.co.jp
Web: www.glsciences.com

GL Sciences B.V.

De Sleutel 9
5652 AS Eindhoven
The Netherlands
Phone: +31 (0)40 254 95 31
Email: info@glsciences.eu
Web: www.glsciences.eu

GL Sciences (ShangHai) Ltd.

Tower B, Room 2003,
Far East International Plaza,
NO,317 Xianxia Road,
Changning District.
Shanghai, China P.C. 200032
Phone: +86 (0)21-6278-2272
Email: contact@glsciences.com.cn
Web: www.glsciences.com.cn

GL Sciences, Inc. USA

4733 Torrance Blvd. Suite 255
Torrance, CA 90503
Phone: 310-265-4424
Fax: 310-265-4425
Email: info@glsciencesinc.com
Web: www.glsciencesinc.com

International Distributors

Visit our Website at:

<https://www.glsciences.com/company/distributor.html>