

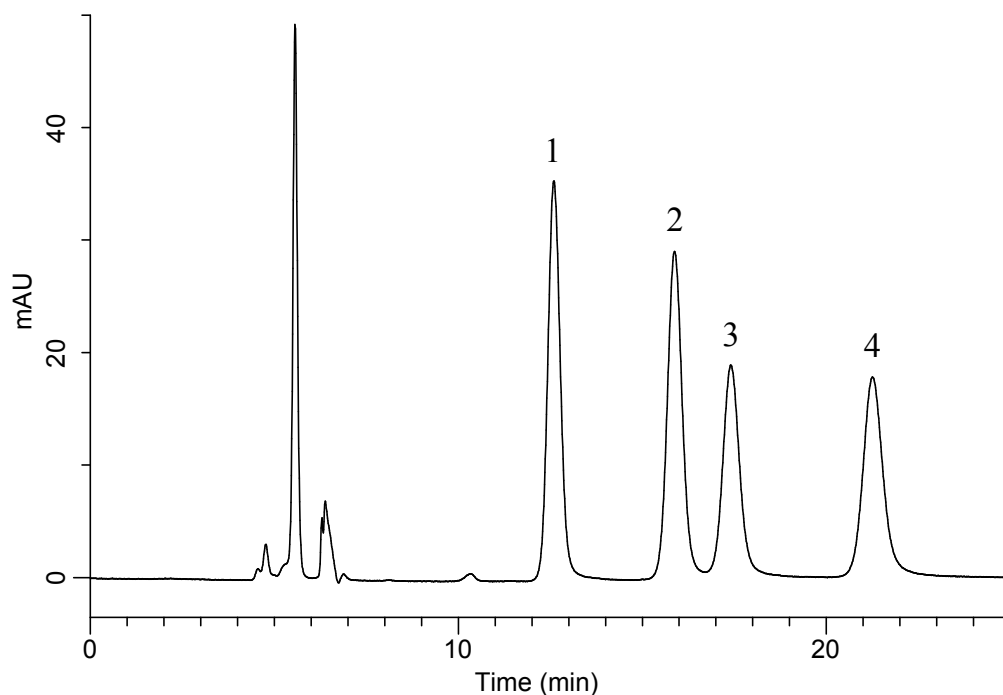
# InertSearch™ for LC

Inertsil™ Applications

## Analysis of Steviol glycosides

(Under the Condition of the JSFA-VIII (Japanese Standards of Food Additives),  
Stevia Extract)

Data No. LB569-0919



### Conditions

**System** : GL7700 HPLC system  
**Column** : InertSustain NH2  
(5  $\mu$  m, 150 x 4.6 mm I.D.)  
**Column Cat. No.** : 5020-16627  
**Eluent** : A) CH<sub>3</sub>CN  
B) H<sub>2</sub>O  
A/B = 4/1, v/v  
**Flow Rate** : 0.32 mL/min  
**Col. Temp.** : 40 °C  
**Detection** : UV 210 nm (PD7752 PDA Detector)  
**Injection Vol.** : 10  $\mu$  L  
**Sample** : Standard

### Analyte:

1. Dulcoside A  
2. Stevioside  
3. Rebaudioside C  
4. Rebaudioside A