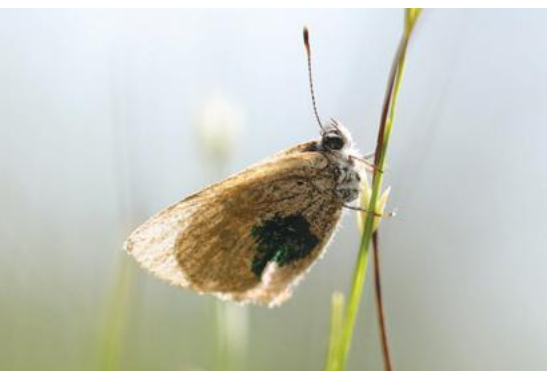




**PROTECTING GEORGIAN BAY'S WILDERNESS LANDS**



## DEAR FRIENDS,

The community that supports the long-term conservation of Georgian Bay is truly remarkable. As the Land Trust's work continues to grow, we continue to be amazed by how deeply people care, and, more importantly, how readily they step up. Whether through volunteering their time, donating to sustain the organization, or contributing to a specific project, your support makes this work possible. We cannot thank you enough.

When these community contributions are combined with the dedication and talent of the staff team at the Georgian Bay Land Trust, it is no surprise that together we are able to accomplish so much.

The work of this community is also critical. As development pressures increase across the province, and as new federal and provincial legislation accelerates the pace of that development, the Land Trust's efforts to protect more land, as well as to research and monitor the ecosystems we care for, have never been more important. Just as important is the opportunity to work in partnership with local First Nations, which is critical to achieving strong, lasting conservation outcomes over the long term.

This past year offered many examples of our collective accomplishments:

- » 65 land stewards committed hundreds of hours of their time
- » 7 new properties were protected, bringing more than 400 acres under conservation
- » Close to 1,000 people made a financial contribution
- » We launched a new website with an interactive GIS driven map
- » Our team monitored over 170 kilometres of unopened road allowances, baselining the ecosystems there for the future

As we look ahead, we are filled with gratitude for everyone who makes this work possible. To our supporters, volunteers, partners, and community members: Thank you for your commitment to protecting Georgian Bay. Your generosity, care, and belief in this mission are the foundation of every success we share, and we are deeply thankful to be part of this work alongside you.

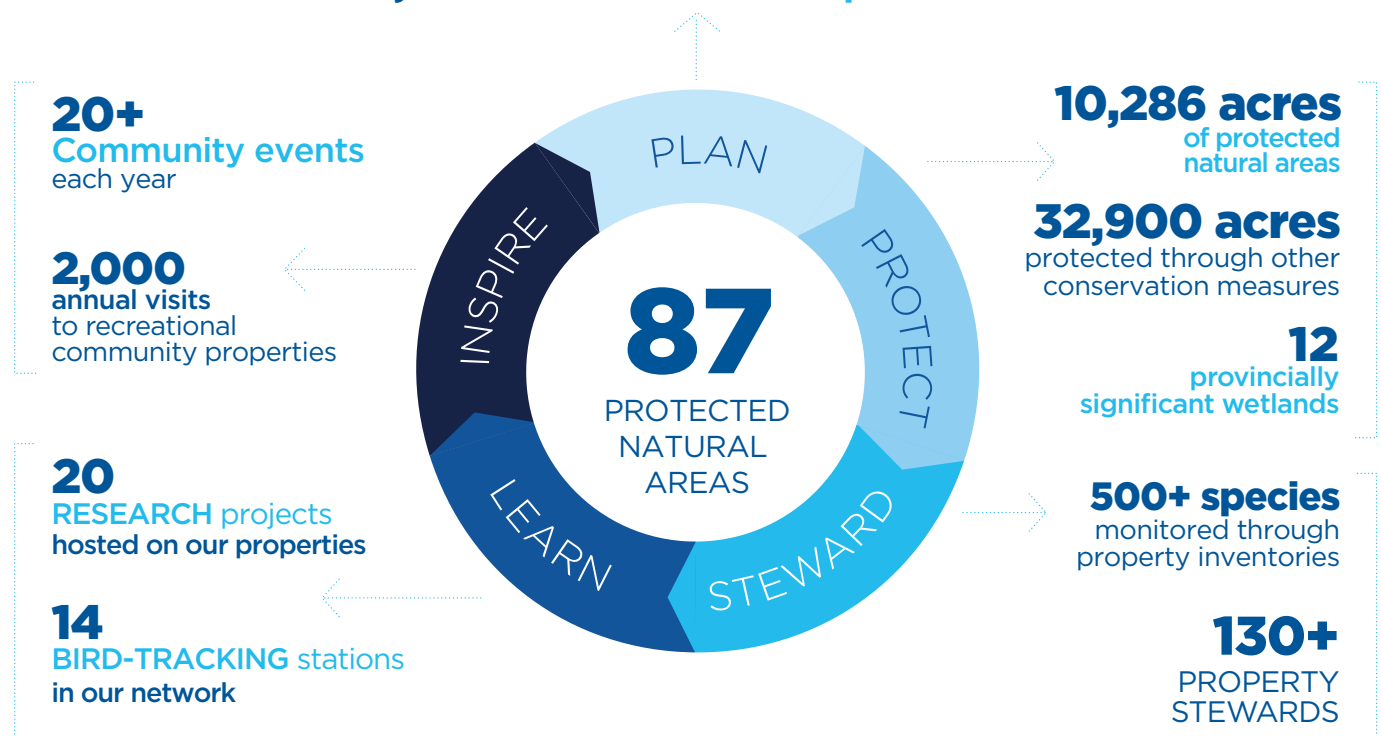


**ANDREW YOUNG**  
Executive Director



**CATHY BONGARD**  
Board Chair

## A CONSERVATION PLAN FOR **75,000 acres** AND **50 species at risk**



# PLAN

## Using science to identify and prioritize key habitats for conservation so that species are protected and our coastal ecosystem remains resilient

### CORRIDOR PROJECT

2025 was a year of significant progress in planning for the northward growth of the Corridor Project. Two new teams were hired to survey lands for the potential Middle and Northern sections of the Corridor. From June to August, the teams completed **118.4 km of road allowance surveys** on foot, and **30.4 km of shoreline surveys** by canoe, logging rare species, ecosystem types, and human disturbances on the land. These surveys are an important step in the possible inclusion of these lands in the Corridor Project, which aims to protect a 75,000 acre habitat corridor along the eastern shore of Georgian Bay.



### GIS MAPPING

Species and habitat mapping is at the heart of much of our planning work. We invested in our mapping this year by hiring our first **in-house GIS Technician**, Rhythm Verma. Rhythm is translating our research findings and survey data into maps which allow us to better identify and pursue priority lands for conservation.

### MULTI-SPECIES ACTION PLAN

We began the planning process for our new Multi-species Action Plan, which will launch fully in 2026. This plan will improve our knowledge of the habitat needs and distribution of a large range of species of conservation concern through targeted survey efforts and population mapping, and will translate into recommended actions that we and the public can take to protect species on Georgian Bay.



### FIRST NATIONS COLLABORATION

We strengthened our work to engage with First Nations, primarily seeking to understand how we might collaborate more effectively on conservation projects through a two-eyed seeing approach. We co-hosted a number of gatherings and meetings with First Nations to explore these ideas. With this in mind we have collaboratively identified several opportunities that we will work together on in 2025 and beyond.

# PROTECT

## Securing ecologically significant lands to protect habitats and species and to create open spaces for community enjoyment



We're thrilled to have protected this ecological cornerstone of the Honey Harbour and Cognashene communities. Its 365 acres contain a diverse mix of forest, Canadian Shield, and wetland habitats, including parts of two Provincially Significant Wetlands and one of only five designated Areas of Natural and Scientific Interest in eastern Georgian Bay. These rich habitats support much of the wildlife seen in the surrounding area, including a large Great Blue Heron rookery, fish breeding grounds, and stopover sites for migratory waterfowl.

Thank you to the many community members who donated, as well as the Government of Canada's Natural Heritage Conservation Program, and the Ontario Conservation Accelerator for making the protection of this property possible.



This small island cluster includes a central island surrounded by four smaller granite outcrops to the north and south. The outcrops play an important ecological role by offering shelter and microhabitats for aquatic flora and fauna, and by providing warm, open basking surfaces that support a range of reptile and amphibian species. The main island supports three distinct vegetation community types, including the provincially rare Winterberry Organic Thicket Swamp ecosystem type. Together, these islands form a small but ecologically significant refuge within Georgian Bay's coastal archipelago. Their protection ensures the persistence of rare plant communities, specialized shoreline habitats, and the species that depend on them.

**DONATED BY DOUG & RUTH GRANT**



The Birch Island Conservation Easement is characterized by a rugged, forested interior and a gently sloping shoreline containing provincially rare wetland habitat which provides homes to a wide range of species.

**DONATED ANONYMOUSLY**

"We have been stewards of our island for over 50 years. We have had great joy swimming, fishing, canoeing, and watching sunsets with our children. We have loved watching bass spawning in the clear water, osprey raising their young, painted turtles laying their eggs, and mink running over the rocky shore. We realized that most of our island could remain in a natural state if we granted a conservation easement to the Georgian Bay Land Trust. It was an easy decision."

**BIRCH ISLAND CONSERVATION EASEMENT DONORS**

# PROTECT



## **FAIRWOOD NATURE PRESERVE EXPANSION**

**23 ACRES  
POINTE AU BARIL**

The Fairwood Nature Preserve has grown from 32 acres to over 56 acres thanks to two new conservation easement agreements with anonymous landowners. The expanded preserve supports an exceptional diversity of ecosystems, with ten distinct vegetation community types identified across the property, including fens, mixed forests, exposed bedrock, and a unique interior pond. Baseline studies and survey visits documented six species of conservation concern on the property. Of particular note are the Eastern Wood-pewee, the Midland Painted Turtle, and the Monarch, all of which are recognized as species at risk. Thank you to the Government of Canada's Natural Heritage Conservation Program - Land Trusts Conservation Fund for providing financial support for this project.

**DONATED ANONYMOUSLY**

This island property is located at the southern end of a chain of islands south of Shawanaga Island. The property represents a diverse assemblage of ecosites, including shoreline wetland habitat, upland forest, and open rock barren communities. Together, these habitats support a range of regionally and provincially significant species and include areas that provide important habitat for species at risk. Thank you to the Government of Canada's Natural Heritage Conservation Program - Land Trusts Conservation Fund for providing financial support to assist in this conservation initiative.

**DONATED BY EVELYN B. NEWELL, PETER S. NEWELL, MARTHA H. NEWELL, DAVID H. NEWELL, MARGARET H. NEWELL**

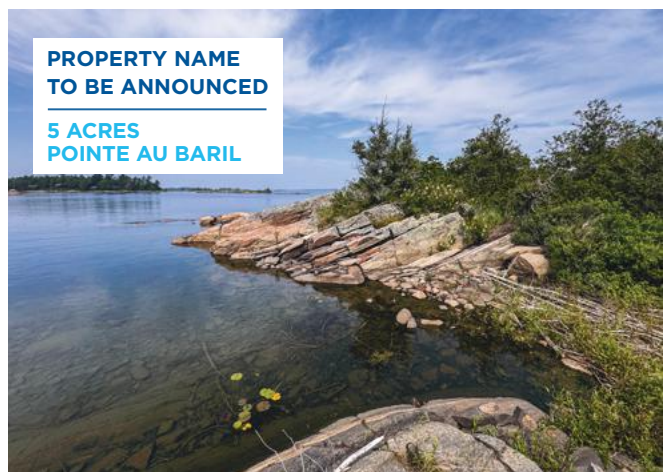


## **PAYNE-MEINIG NATURE RESERVE**

**23 ACRES  
COGNASHENE**

The Payne-Meinig Nature Reserve contains a diverse assemblage of habitat types, including undeveloped shoreline with documented Common Loon nesting activity, mature upland forest, open rock barren communities, and provincially rare wetland ecosystems. The property encompasses both mainland and island habitats, which support a range of species at risk and regionally significant flora and fauna. This new protected area also forms an important link between the Cognashene Lake Conservation Reserve and Longuissa Bay, enhancing habitat connectivity in the area.

**DONATED BY TOM PAYNE AND ELAINE MEINIG  
IN MEMORY OF HARVEY AND MARGARET PAYNE  
AND WALTER AND JESSIE MEINIG**



## **PROPERTY NAME TO BE ANNOUNCED**

**5 ACRES  
POINTE AU BARIL**

# STEWARD

## Working alongside communities to monitor and maintain wilderness lands forever

Together, our staff and volunteers stewarded **10,205 acres** of land in 2025, monitoring for ecological condition, human debris and disturbances, and native and invasive species. Regular stewardship helps ensure that the lands under our care continue to provide healthy habitat to the **50 species at risk** that rely on them, and remain safely accessible to human visitors.

### In 2025:

- » All of the Land Trust's **22 Conservation Easements** were monitored by a staff member
- » **48 Land Trust-owned properties** (out of 51) received a monitoring visit
- » New **full species inventories** were completed on **7 properties**
- » New **signage** was installed on **25 properties**
- » **65 active volunteer stewards** completed **88 monitoring visits**, taking part in **invasive species removal, garbage cleanup, property maintenance, and visitor education**



### INVASIVE SPECIES REMOVAL

Invasive species are those that threaten to take over ecosystems by significantly displacing native flora and fauna. Our staff and volunteers are trained to look out for invasive species on property monitoring visits, and regularly remove small amounts of the species they encounter. This year our staff team's major invasive species work included:

- Cutting ***Phragmites australis*** on 5 properties, and sending in samples from 4 properties for genetic testing to determine native or non-native status
- Targeted ***Sedum acre*** removal from 5 properties
- Monitoring for **Purple Loosestrife**, and cutting opportunistically



### DRONE MAPPING AND MONITORING

New in 2025, our Corridor Team began using drones to monitor large landscape areas, as a supplement to on-the-ground foot monitoring. We completed **100 km of drone surveys**, taking high-resolution imagery that is stitched together to construct detailed ecological habitat mapping. This mapping gives us a better picture of the different ecosystem types on the landscape and will provide us with another tool to monitor ecological changes over time.

# LEARN

## Advancing conservation by conducting scientific studies and using our properties to support research

Our research program aims to learn more about Georgian Bay's species, habitats, and ecological processes, to gather data that will inform conservation planning and decision making. We launched **4 new research projects in 2025**. Our current suite of projects includes:



### **MONITORING AVIAN PRODUCTIVITY AND SURVIVORSHIP (MAPS) - NEW IN 2025!**

Our research team conducted 7 MAPS monitoring days in the summer of 2025 and banded 61 birds. This program involves banding a wide cross-section of migratory birds, and sending standardized data to the Institute for Bird Populations who monitor long-term trends.

### **BOG COPPER GENETIC DIVERSITY - NEW IN 2025!**

Undertaken in collaboration with MSc student Madison Robinson of Western University, this study aims to learn how the genetics of island and mainland Bog Copper butterfly populations differ, and what this can tell us about species movement on Georgian Bay.

### **COASTAL WETLANDS - NEW IN 2025!**

This was our first year of a multi-year project conducting species surveys in coastal wetlands. The goal of this project is to establish a long-term dataset which will help assess trends in wetland health and species composition as water levels fluctuate and the climate changes in the decades to come.



### **NORTHERN SAW-WHET OWL BANDING - NEW IN 2025!**

We banded 183 Saw-whet Owls over two weeks in the fall of 2025, as part of an effort to learn more about Georgian Bay's fall migratory flyways. These tiny owls are good indicators of larger trends in owl migration, and can help us understand the importance of Georgian Bay habitat for southbound migration.

### **EASTERN WHIP-POOR-WILL BREEDING HABITAT**

In our third year of this study, we tagged and tracked 9 Whip-poor-wills using radiotelemetry. Following the movements of these threatened birds has allowed us to confirm their habitat needs on Georgian Bay and map priority habitats for conservation.

### **PRAIRIE WARBLER POPULATIONS**

We tagged and tracked 6 Prairie Warblers during the spring and summer of 2025, following their daily movements around the Go Home Bay area and subsequent migration. Together with the previous two seasons of research work, this data has helped us build a better picture of breeding territory size and post-breeding movements for this unique Georgian Bay species.

# INSPIRE

## Bringing communities together and cultivating the next generation of conservationists that will protect our land and species



Bog Copper butterfly Research Demonstration

**11 SUMMER AND FALL EVENTS** connected **235 PEOPLE** with nature and conservation. Events included bird banding and butterfly research demonstrations, nature walks, and talks by our conservation team members.



Fall Bird Migration Walk

**2,000+ VISITORS** enjoyed our conservation properties, with activities including hiking, birdwatching, picnicking, and swimming.

Our communications channels shared information about Georgian Bay's environment, wildlife, and conservation with thousands of community members:

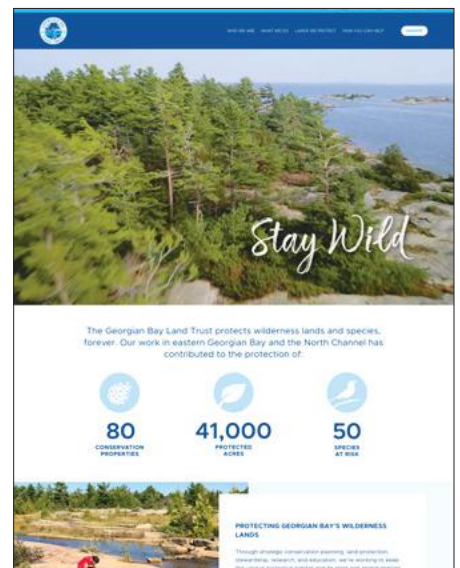


Bird Banding Demonstration

**6,594 SOCIAL MEDIA FOLLOWERS** saw real-time updates on our research projects, and learned how to identify the species we encounter in the field



**7,000+** readers of the **LANDSCRIPT NEWSLETTER** learned about topics including tree care, rattlesnake lifecycles, and rare bird sightings



**15,882** visitors to our **NEW WEBSITE** accessed our interactive property visitor map and blog posts from staff and partners

# FINANCIALS

## Georgian Bay Land Trust

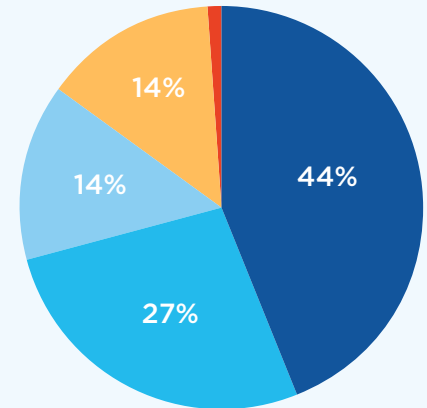
### STATEMENT OF FINANCIAL POSITION | As at December 31

ASSETS	2025	2024
<b>CURRENT</b>		
Cash and Cash Equivalents	913,868	1,651,913
Marketable Securities	628,723	-
HST Rebate Receivable	39,499	24,480
Prepays	12,057	18,497
	1,594,147	1,694,890
Stewardship Funds and Endowment	2,010,558	1,873,716
Sheila MacFeeters Memorial Fund	217,949	217,949
Wally and Marilyn King and Family Fund	111,615	111,615
Corridor One Fund	2,053,848	1,971,613
John Catto Conservation Fund	200,000	200,000
Conservation Working Fund	4,789,185	4,324,185
Conservation Lands Securement Fund	894,403	524,532
Capital Assets	64,932,542	61,111,770
	76,804,247	72,030,270
<b>LIABILITIES</b>		
<b>CURRENT</b>		
Accounts Payable and Accrued Liabilities	133,059	15,013
Deferred Contributions	461,100	627,000
	594,159	642,013
<b>NET ASSETS</b>		
Unrestricted Net Assets	999,988	1,052,877
Internally Restricted Net Assets	5,883,588	5,048,717
Externally Restricted Net Assets	4,393,970	4,174,893
Net Assets Invested in Property	64,932,542	61,111,770
	76,210,088	71,388,257
	76,804,247	72,030,270

### CONDENSED STATEMENT OF INCOME & EXPENDITURES | Jan 1 to Dec 31, 2025

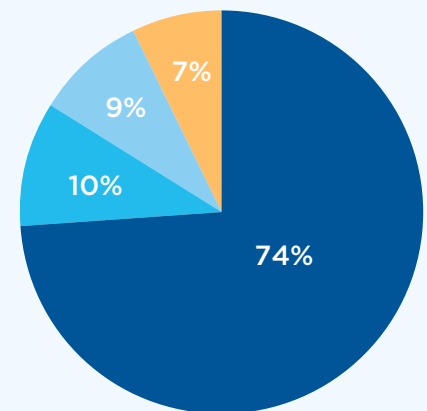
REVENUE	2025	2024
Donations - Stewardship, Conservation, and Land Acquisition	22,380	12,268
Government Grants	926,772	1,210,009
Donations	1,845,443	3,083,254
Events	68,007	99,749
Investment	974,123	1,358,615
	3,836,725	5,763,895
<b>CAPITAL REVENUE</b>		
Donations - Land and Land Easements	2,969,000	9,612,700
<b>EXPENDITURES</b>		
Conservation	1,464,923	765,470
Communications & Education	184,315	134,120
Fundraising	203,267	183,622
Project Management, Dues, Conference and Training	131,389	91,235
	1,983,894	1,174,447
<b>Excess Revenue over Expenditures</b>	4,821,831	14,202,148
<b>Net Assets Beginning of Year</b>	71,388,257	57,186,109
<b>Net Assets End of Year</b>	76,210,088	71,388,257

### REVENUE



- Donations of Land
- Donations
- Government Grants
- Investment Income
- Event Income (1%)

### EXPENSES



- Conservation
- Fundraising
- Communications and Education
- Project Management, Dues, Conference and Training

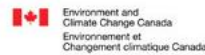
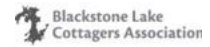
The Georgian Bay Trust Foundation, Inc.  
(operating as Georgian Bay Land Trust)  
Reg. Charity # 13195 8811 RR0001 Complete audited  
financial statements are available upon request

# PARTNERS

## Many Thanks to our Generous Sponsors



## Partners



Environment Canada  
Ecological Gifts Program

Glencairn Wine  
Merchants

Great Lakes Basin  
Conservancy

# THANK YOU

## Cumulative Giving

### LUMINARIES

Over \$500,000

John & Margaret Catto  
Environment & Climate  
Change Canada  
Great Lakes Basin Conservancy  
Bill & Carol Prior  
Weston Family Foundation  
Anonymous donor

### VISIONARIES

Over \$300,000

Geordie Dalglish Family  
Robert & Julia Foster  
Estate of Dr. Michael Francis  
Wally & Marilyn King  
Ontario Trillium Foundation  
Sandy & Marilyn Phillips  
Estate of Nancy Powis  
Tom & Pamela Scoon  
Anonymous donor

### AMBASSADORS

Over \$200,000

Fred & Sue Dalley  
Echo Foundation  
The Langar Foundation  
Sheila MacFeeters  
& Michael Williams  
Robin & Robert Ogilvie  
Jan Ruby & Mary Thomson  
Janny Vincent  
Annabelle White  
Anonymous donor

### CHAMPIONS

Over \$100,000

Jennifer Ivey Bannock  
Ann & David Doritty  
Jean Hughes  
Jackman Foundation  
Chris & Jane Lamon  
Donald & Lorraine Lawson  
Estate of William Marrow  
McLean Foundation  
Nosreap Family Foundation  
Jean M. Saillant  
Estate of Kay Sloan  
TD Bank  
John & Victoria Tremayne  
John & Josie Watson  
Galen & Hilary Weston  
Valerie Zawilski  
Anonymous donor

### PIONEERS

Over \$50,000

Rick Balaz  
David & Shelagh Blenkarn  
Dr. T. James & Maureen Cooper  
Bruce Croxon & Debra Thier  
Elizabeth Davidson

Bill & Kathleen Davis  
Sted & Robin Garber  
Georgian Bay Beverage Company  
Jon & Shelagh Grant  
Stephen & Catherine Griggs  
Dr. Ralph S. & Caroline Grose  
Doug & Sue Grundy  
Adam Howard & Janet Neilson  
Iron City Fishing Club  
Estate of Peter Kemerer  
MapleCross Fund  
Steve Mason Family  
Wendy Matheson  
The McDonald Family  
C. Ann McKibbin  
Paul & Martha McLean  
Payne Marine  
Francie & John Pepper  
Samuel Family Foundation  
Dave & Bev Stager  
John & Chris Stark  
Stewart H. (Nick) Steffey Jr.  
William J. & Meredith Sanderson  
Tadenac Conservation Foundation  
Rob & Val Thompson  
Janet Walker

### TRUSTEES

Over \$20,000

Martin Abell & Kim Dalglish  
John & Karen Agnew  
David Anderson  
Murray & Susan Armitage  
Foundation at the Toronto  
Community Foundation  
The Roger D. & Diane M. Ashton  
Fund at WCPD Foundation  
Tim & Ann Bowman  
Sandy & Gloria Boyd  
David & Joanne Browne  
David & Wendy Bunston  
Ian & Margaret Carmichael  
Stephen & Jane Chisholm  
William & Patricia Culp  
Jennifer Dattels  
Ruth & Neil Davis  
Michael & Honor de Pencier  
Desmasdons Boatworks  
Michael Douglas  
John & Sybil Eakin  
Ganawenim Meshkiki  
Doug & Ruth Grant  
Stephen Gunn & Patti  
Bunston-Gunn  
Douglas Hall  
Elizabeth Hall-Findlay  
Martha Hall Findlay  
John Hartman  
Jim & Anne Hilmer  
Ernest Howard  
John Irving & Janet Turnbull  
Peter & Marjorie Kelk

Ted & Alice Kernaghan  
Peter Koetsier &  
Wendy Wingfelder  
Jean Koetsier-Adams  
Kopas Family Foundation  
The Lawson Foundation  
LeVan Family Foundation  
(a fund held within the Oakville  
Community Foundation)  
Barbara & Dougal Macdonald  
Mark McDermott Memorial Fund  
(a fund held within the Oakville  
Community Foundation)  
Ada & Hugh Morris  
David & Elizabeth Mosher  
James Mosher  
Kerry & AJ Mueller  
Evelyn Newell  
Peter Newell  
Michael & Agneta Owen  
Peasgood Impact Fund at  
Abundance Canada  
Norm Playfair & Kim Cormack  
Emery & Tara Prior  
Hamish & Peggy Robertson  
James & Margot Tushingham  
William & Joy Sayers  
Michael & Sonja Stewart  
Tatham Engineering  
The Topper Group Limited  
Cindy Tripp & Anthony Boright  
Janet Veale  
Vincent Associates Inc.  
Peter S. Watson  
Donald & Sandra Wilson  
Phil Wilson  
Anonymous donors

### Land & Easement Donors

Douglas Alexander  
John Austin  
Betsy Bascom  
Gordon Bongard  
Kim Bozak & Philip Deck  
Michael Steven Brown  
Catherine, Doug, Gillian  
& Lesley Cameron  
Wendy Camirand  
Glen & Jane-Anne Campbell  
John & Margaret Catto  
Nancy & Ted Christie  
Jennifer Dattels  
Patricia Davidson  
Bill Detmer & Angel Lillard  
Caroline Duncanson  
Anna Edels  
Edgar Edels  
Eleanor & Howard Edmunds  
Kevin Gillen  
Lyn Gillespie  
Doug & Ruth Grant  
Joan Grierson  
Stephen Gunn & Patti  
Bunston-Gunn  
Beth & Tom Halpenny  
Patricia & Bill Hamilton  
William & Pat Harris  
Philip & Nancy Havens  
William & Marion Holton  
Adam Howard & Janet Neilson  
George Hume  
Jay Ingram  
Mary Elizabeth Jeffries  
Lynn & Ned Jessen  
Cynthia & Peter Kemerer  
Ross & Ann Kennedy  
John Kleinschmidt  
Barb, Jeff & Jim Kofman  
Elizabeth, Hugh & Joan  
MacCallum  
Jim & Jill MacKenzie  
Dr. Cortland Mackenzie  
Madawaska Club of Go Home Bay  
Manitou Association  
Stephen Martin  
McCarthy Family  
C.C. McGibbon  
Ian & Maureen McGibbon  
Julia E. McLaughlin  
Mary McPherson  
Michael John Mitchell  
Kerry & Achim Mueller  
Polly E. Naughton  
Percy & Mary Nelson  
David, Evelyn, Kimberly, Margaret,  
Martha & Peter Newell  
Northey Family  
Jack & Maria Nowack  
Oak Bay Developments Inc.  
Thomas Payne & Elaine Meinig  
Pointe au Baril Islanders'  
Association  
Jim & Paula Preschlack  
Dr. Hamish Robertson  
Joan Robinson  
Brian Rogers  
David Russell  
William H. Russell  
William & Meredith Sanderson  
Jane Schneider  
Tom & Pamela Scoon  
Marilyn & Paul Shepherd  
Craig Shibley & Caroline Coulson  
Bob & John Suter  
Rob & Val Thompson  
Robert Thomson  
Township of Georgian Bay  
Jill Hodgins Ukrainec  
& Terry Ukrainec  
George Wilson  
Donald & Jane Wright  
Donald Paton Wright  
Barbara Zimmerman  
Anonymous Donors

# DONORS

Your generous donations ensure that Georgian Bay's wilderness lands are protected in perpetuity. We are honoured to celebrate the following supporters who made gifts from January 1 through December 31, 2025.

## PROTECTED PROPERTIES

*Our deepest appreciation to those who donated property or conservation easements, or made contributions for land protection projects in 2025:*

### Birch Island Conservation Easement

Anonymous donor

### Fairwood Nature Preserve - Part 2

Anonymous donor

### Fairwood Nature Preserve - Part 3

Anonymous donor

### Grant Islands Nature Reserve

Doug & Ruth Grant

### Payne-Meinig Nature Reserve

Thomas Payne & Elaine Meinig

### Property Name to be Announced

David H. Newell, Evelyn B. Newell, Margaret H. Newell, Martha H. Newell, Peter S. Newell

### Conservation Lands Securement Fund

Maureen & Jim Cooper  
Nicola & Geoff Mitchinson

### Corridor Project

Sherrill R. Bing & Carole Bellanca  
Environment and Climate Change Canada  
Great Lakes Basin Conservancy  
C. Ann McKibbin  
Tom & Pamela Scoon  
Victoria & John Tremayne  
Anonymous donor

## STEWARDSHIP FUNDS

*Stewardship Funds are long-term investments that support the ongoing annual stewardship of our protected properties. Thank you to those who made contributions in 2025:*

### Legacy Stewardship Fund

Derek Bate  
Peter Scandrett

### Andy Griggs Memorial Fund, Pointe au Baril

### Dave & Bev Stager Sandy Island Stewardship Fund, Sandy & Martyr Islands

### Douglas & Marylon Alexander Stewardship Fund, Wah Wah Taysee

Anonymous donor

### Watson Family Stewardship Fund, Cognashene, Go Home Bay & Honey Harbour

Pedro Luna Fund

## ANNUAL SUPPORTERS

*Our achievements are shared with our generous supporters who care about the conservation of Georgian Bay as much as we do. Thank you to all those who made contributions in 2025:*

### \$250,000 +

Environment and Climate Change Canada  
Great Lakes Basin Conservancy  
Anonymous donors (1)

### \$100,000 - \$249,999

Estate of Dr. Michael Francis  
Chris & Jane Lamon  
Sandy Phillips  
Anonymous donors (1)

### \$50,000 - \$99,999

Estate of Peter Kemerer  
The Estate of Nancy Powis  
Victoria & John Tremayne

### \$25,000 - \$49,999

Robin & Robert Ogilvie  
Peasgood Impact Fund at Abundance Canada  
Jan Ruby & Mary Thomson  
Tadenac Conservation Foundation  
Janny Vincent & Peter McCann  
Anonymous donors (1)

### \$10,000 - \$24,999

Jackman Foundation  
The Langar Foundation  
The Mason Family Fund of Vanguard Charitable

Sue & Biff Matthews  
The McDonald Family Foundation  
C. Ann McKibbin  
Nicola & Geoff Mitchinson  
Peter Newell  
Ontario Land Trust Alliance & Government of Ontario  
Tom & Pamela Scoon  
Weston Family Foundation  
Anonymous donors (2)

### \$5,000 - \$9,999

The Roger D. & Diane M. Ashton Fund at WCPD Foundation  
The Assaly Campbell Foundation (at Benefaction)  
The Bowman Family  
Margaret Catto  
Jim & Maureen Cooper  
Fred & Sue Dalley  
Caroline & Bob Duncanson  
Martha Hall Findlay  
Steve Gunn & Patti Bunston Gunn  
Iron City Fishing Club  
Jennifer Ivey Bannock  
Nosreap Family Foundation  
Nick Steffy  
Michael & Sonja Stewart  
Rob & Val Thompson  
The Tushingham Family Trust at Private Giving Foundation  
Estate of Roland John Walker  
Anonymous donors (1)

### \$1,000 - \$4,999

Adanac Realty Limited  
Murray & Susan Armitage Foundation at Toronto Foundation  
J.R. Armstrong Family Foundation  
David & Glyn Austin  
John & Jenn Bate  
Cathy Bongard & David Pitfield  
Martha J. Breithaupt  
Doug & Mary Lou Brock  
Usne Butt & Trisha Layton  
Douglas & Margarete Carr  
Cedar Point Cottagers  
Barbara J. Conyers  
Sue Cross  
Neil & Ruth Davis  
Mark Dennison  
David & Ann Doritty  
Jason Drysdale  
John & Sybil Eakin  
Brian Carr and Kathryn Elliott  
Andrew & Leigh Fabens  
David & Margaret Fancher  
William Fee  
Katherine Firstbrook  
C. Stedman & Robin Garber  
Graeme Grant & Meredith Saillant  
Dr. & Mrs. Ralph S. Grose  
Grundy Family  
John & Elizabeth Hackett  
Roz and Andrew Heintzman Giving Fund at Toronto Foundation  
Bruce & Lynn Hernandez  
Ashley & Wendy Hilliard  
Hilliard Family Fund, held at Vancouver Foundation  
Mary Hudson & C. David Gifford  
Peter Koetsier & Wendy Wingfelder  
Donald & Lorraine Lawson  
Little Beausoleil Candle Co.  
Robert & Patricia Lord  
Jane Lotimer  
Diane MacDiarmid & Ian MacDonald  
Barbara & Dougal MacDonald  
Randal Hughes & Nancy Main  
Martin Merry & Reid Limited  
Sarah McCoy & Jim Buchanan  
Mark McDermott Memorial Fund (a fund held within the Oakville Community Foundation)  
Elaine Meinig & Thomas Payne  
Barb Minett  
Bill & Betty Morris  
John & Marion Morris  
Kerry & AJ Mueller  
Mueller Services Inc.  
Evelyn B. Newell  
Scott & Michelle O'Connell  
Matt Paterson  
Pedro Luna Fund  
Barksdale & Anne Penick  
John & Francie Pepper  
Katie Russell & Marco Leyton  
Chet Sandberg  
William & Meredith Saunderson  
William Sayers  
John Shaw  
Spiess Family Foundation  
The Stanton Family  
Marilyn & Tom Stark  
Jack Stoner  
Mary Jane Swinn  
Michele & Ryerson Symons  
Norma & Michael Tangney  
Brian Wade  
George Wark  
John & Josie Watson

Donald & Sandra Wilson  
Rob & Fran Woodrooffe  
Vincent Associates Inc.  
Whitener Family Fund of  
the American Endowment  
Foundation  
Wood Hart Fund at Toronto  
Foundation  
Anonymous donors (8)

**\$500 - \$999**

Akler Browning LLP  
Reed & Julie Ballon  
Allan Barnes & Shirley Coleman  
Donald J. Bartlett  
David Burt  
Paul Charlebois  
Nancy Christie  
Peter & Cathy Cooper  
Mr. & Mrs. Frederik Crawford  
Brien & Nancy Dane  
Gord & Margie Davidson  
The Roy H. Reeve Agency Inc. -  
Thomas Dickerson & Thomas  
Gatz  
David Drinkwater  
William B. Du Pont  
Lynn Duckworth  
Mary Lynne Eakin  
Julia & Robert Foster  
Peter Foulds & Maureen  
MacQuarrie  
Denis F. Green  
Brooks Greer  
Ian & Louise Hayes  
Dr. & Mrs. David R. Herbold  
David & Peggy Hill  
The Kanelopoulos Family  
J and K Knowles Foundation  
Dave Lumsden  
Cathy McKeever  
Mark & Judy McLean  
Sue McNamara  
Bill Molesworth & Susan Newell  
Sandra & Robert Moos  
Stephen & Hope Murphy  
Andrea Murphy Ferin  
Tara Nazerali  
Margaret Newell  
Anne & John North  
George Prieksaitis & Asa Sjoberg  
Alex & Kathleen Ramsay  
Katy Rea  
Susan Renouf  
Nancy McCuaig Rogers  
Sewell Russell  
James Seery  
Michael & Melinda Tabor  
Christopher N. Thompson  
Mary Dawn Thomson  
Peter & Amy Uniack  
Helen & George Will  
John Wilson & Judy Maynard  
Judith Yohe  
Dale Yurka  
Barbara L. Zimmerman  
Anonymous donors (6)

**\$150 - \$499**

Pam Aitken  
Jane & Dave Anderson

Madeleine Arsenault & Rainer  
Kaufmann  
Dominic Auld & Flo Panizza  
Elisabeth Bacque  
Richard & Cindy Balaz  
Clair Balfour & Marci McDonald  
Lisa Balfour Bowen  
Dr. & Mrs. Graeme G. Barber  
Gordon & Christel Barrett  
Trish Barrett  
David Barsalou  
Bruce & Lesley Barton  
Doug & Davis Barton  
Graeme Bate  
Natasha Beery & William B.  
McCoy  
David & Christine Bennett  
Jen Bermingham & Andy Willis  
Allen G. Binnington  
Blue Sky Yoga  
Susan Boddington  
Susan Bongard  
Deborah Bongard & Reid Bowlby  
Anthony Boright & Cindy Tripp  
Peter & Rita Boruta  
Craig & Catherine Bowden  
John Bowden  
Staunton Bowen  
Lisa Bower  
Jo Ann Bowle-Evans  
Mary E. Bromley  
Hank & Lili Brunnader  
Maureen & Don Buchanan  
Helen Bryce  
David & Wendy Bunston  
Gordon & Karolyn Burkhardt-  
Schultz  
Chris & Kathy Butcher  
Gillian Cameron & Bruce  
Harbinson  
Jane-Anne & Glen Campbell  
Margaret Campling  
Vicki & Keith Carruthers  
Susan & Ross Carter  
Cement Association of Canada  
Libby & John Chapin  
Barbara Chisholm & Thomas  
Miller  
Roslyn Christie & Gary Walker  
Janet Coit  
The Columbus Foundation  
Caroline Coulson  
Chester & Patricia Crone  
Michael Cruickshank  
Charles Culp  
Fraser Dane  
Lloyd R. Davenport  
Martha & Alf Davis  
Meg Davis  
Roman & Virginia Dementavicius  
Patricia Duggan  
Michael Eakin  
Susan Eastwood  
Pat & Joanne Edwards  
Michael Evans & Susan A.  
Edwards  
William Este  
Rick Fearman  
Brian & Jean Fuller  
Charles Gane  
Elizabeth Garber

Helen A. Garber  
Laurie Goad & Eugene Trusler  
Michael & Michelle Gordon  
Catherine Graydon  
Scott Greene  
Betsy Hall-Findlay  
Mary Hallock  
Leslie Halloran  
Tom & Beth Halpenny  
John & Mary Hamilton  
Patricia J. Hamilton  
Gale & John Harild  
David Harrison & Cathy Le  
Feuvre  
Philip & Nancy Havens  
Jane Heintzman  
Alan & Janet Heisey  
Linda Heron  
The Hillier, Campbell, Stacey,  
Northcott, Reid, Walsh, Sudom  
and MacLean families  
Ross & Daralyn Hodgetts  
Family Fund at the Edmonton  
Community Foundation  
Adair & Ian Hope  
John & Laura Hughes  
Ian Hull  
Trudy Irvine  
Rolfe Jones & Susan McGibbon  
Rod & Joanne Jones  
Jane E. Kelly  
John & Brenda Kennedy  
Mary Ketchum  
Graham King & family  
Jennifer Koivu  
Anne Larson & Mark Smith  
Guy & Jacquie Lawrence  
James H. Leavens  
Barbara Lennox  
Nathan Lewkowicz  
Jacqueline Limoges  
Bill Loughheed & Sally Lennox  
Jennifer & Scott MacDonald  
Margot Bell Mackay  
Tom Main  
The Martinko Family  
David & Joan Matthews  
Anna Maxymiw  
John & Susan Maynard  
John & Pinky McAllister  
Marjory McDonald  
Nancy & Doug McFadden  
C. Ian & Maureen McGibbon  
Catherine McHugh  
& Gregory Hare  
Gordon McIlquham  
& Maryann Turcke  
Kara McIntosh & Jeff Taylor  
Gordon & Chantal McKechnie  
Ian & Margy Melhuish  
Stephen Murch  
Gillian Murch  
Blake & Janet Murphy  
Caroline Murphy  
Paul P. Nelson  
Campbell Osler & Joanne  
Beveridge  
The Pathfinder Foundation  
Geoffrey Pennal  
Alix Pepler  
Ann Percival

Steve & Eve Petit  
Susan & Tony Pigott  
Alison Platt  
Lloyd & Pat Posno  
Leslie Pringle & Donald Wright  
Bruce Prior  
Pamela Redfern  
Harvey Robbins  
Chuck & Mary Roth  
Valerie & David Rowe  
Joanna Ruby-Armstrong  
& Charles Armstrong  
S&P Global  
Roma & Anthony Sapionis  
Janet Saunderson  
Peter Scandrett  
Robert & Heather Sculthorpe  
Stacey & David Sharpe  
Paul & Marilyn Shepherd  
Julia Sievwright & Robert  
Powadiuk  
Simon Agency  
The Strickland & Leus Families  
Kathy & Howard Thompson  
Tim & Shelley Topornicki  
Tom Trimble  
Ian Tudhope  
Joy P. Uniack  
Mark Usher  
Catherine & Anthony  
van Tulleken  
Inge Viia Tamm  
Roger & Tama Walker  
Lawrence & Judy Ward  
Katie and David Ward  
Nancy Webb & Family  
Marilyn Weber  
John & Arlene Weekes  
Tony Weldon & Beth Malloy  
Sarah White  
Allan Will  
Douglas & Morag Wilson  
Evelyn Wilson  
Ian Wilson  
Andrew Young  
Wendy Yurka  
Sue & Merle Zoerb  
Anonymous donors (22)

**\$1 - \$149**

Bill Abbott & Jane Morey  
Penny L. Acker  
Beth & Peter Adams  
Thomas & Patricia Adams  
Dianne L. Agoglia  
Dianne & Kevin Ambrose  
Betsy Anderson  
Mitch Andrews  
John Armstrong  
Nancy A. Arnoldi  
ARTHUR + McAULEY Candle Co  
Marti Bagworth  
Christopher Baines  
Sandy M. Baker  
The Balog family  
Karen Barrett  
Derek Bate  
Jill Bates  
Donna-Marie Batty  
Be U bracelets  
Wendy Beck

Gregor & Kevin Beck  
Drew Belshaw & Susan Charles  
Catherine Belshaw  
Nancy Bennett  
The Rev. Terry & Leslie Bennett  
and Family  
Kerry & Brenda Benson  
Bradley Bezeau  
Rita Bijons  
Sherrill R. Bing & Carole Bellanca  
Douglas Gerhart & Kate Bishop  
in memory of Laurie Hornell  
Elizabeth & Roy Blair  
Thomas Bogardus &  
Robert De Haan  
Trish Bolton  
Claudia Borders & Nancy Lohr  
Cheryl Boyd  
Steven R. Bradford  
M. E. Brintnell  
Jeff & Darlene Broad  
Lani T. Broadbent  
Ronnie & Robert Burbank  
Donna Burke & Traci Mattheson  
Colm Burrows  
Cynthia L. Bush  
Meghan Cameron  
Jim Campbell  
Megan E. A. Campbell  
Emily Campling  
CanadaHelps  
Diana Cape  
Sheila Catto  
Rich & Toby Cavers  
Barbara Cerny  
Robert J. Clegg  
Gail Cook  
Susan J. Coppa  
Sarah Corrigan  
The Currie family  
John Curry  
Sylvia & Kevin Curtis-Norcross  
David Dattels & Jennifer Grant  
Douglas Davis  
David De Castro  
Diane Dempsey &  
Andrew Rogers  
Sarah Desabrais  
Nelson & Carolyn Deutch  
Benjy & Molly Diesbach  
Theresa Dietrich  
Carter Dorscht  
Suzanne E. Drinkwater  
Michael & Cameron Drinkwater  
Chad Dufour  
Julia Duguay  
Sara Duncanson  
Leigh & Bud Eisenberg  
Kinnon Elliott  
Theresa Erskine  
Marc Cooper  
Grateful Finn children  
and grandchildren  
Robert & Anne Fisher  
Bill Franks  
The French Family  
Helen French  
Myron Frost  
Lori Funston  
Amy Furness  
Elizabeth Garber

James Gee  
Georgian Bay Association  
Robert Gillespie  
Jane Glassco & John Hellwig  
Anthony Glenesk  
Jeff & Patty Goodwin  
Stephen & Catherine Griggs  
Hamilton Family  
David Harris & Penny Caldwell  
Neidra Hart  
Celia Harte  
Katheryn Hayes & Daniel Herron  
Neil & Laurie Hayward  
Franklin Hedley  
Wendy L. Heron  
Dr. & Mrs. Mark Hiseler  
Hodd, Reble, Krukowski families  
Maira & Hendrik Hoogeveen  
R. Gary & Sandra Horne  
George Hume  
Livia & Rory Hunter  
Gin Rocks Press  
Janet Irving  
Mervyn & Gina Jackson  
Stephen & Laura Jarvis  
Mary Lou K. Justason  
Natalie Kemerer  
Sarah Koetsier  
Angie Kramer & Peter Reynolds  
Karen L. Krop  
William Lawler & Hannah  
Mawhinney  
Jean K. Lawrence  
Robert B. Ledlie  
Wendy & Jim Lee  
Tim Leishman  
Anne Lex  
Gabrielle & Bruce Lotimer  
Jane Loughborough  
Jim & Jill MacKenzie  
Marjorie MacQuarrie  
Paula Maggiolo-Plante  
Jolanta Malicki  
Judy Manley  
Rowan Marsh  
Ameena Marsh  
Thomas B.K. Martin  
Jane E. Martin  
Nesife Masraf  
Terry & Kim Maynard  
T. K. & Emily McClintock  
Kathleen McEwan  
Arlene McIntosh  
Gail McKenna  
B. McKinnon  
Duncan McLennan  
Jane McManus  
John A. McMullen & Beth Stewart  
Natalie & David McNeill  
Stephanie Meeuwse  
Nancy Middlebrook &  
Thomas Sherman  
Robert Miller & Dana Hooper  
Paul J. Miller  
Pam & John Mitchell  
Diana Moody  
Scott Moody  
Helen Moore  
George & Mary Moroz  
Susan Mosley  
Fred Munn

Katharine Myrans  
Diane Nagasaki  
Cynthia Neely & Tom Davies  
Natália Neves  
John & Brenda Newell  
Brad Nicpon  
Brendan O'Neill & Janet Green  
Victoria Ostler  
John Palimaka  
Norah & Doug Patriquin  
Michael & April Patry  
Nancy Peters  
Jeanne Petras  
Yvonne H. Pigott  
Karen Plumb  
Anna Porter  
M. Powers  
Andrew Promaine  
Rakuten USA, Inc.  
Jaak Reichmann  
Harris-Reid cottage  
Jason & Emily Richardson  
Victoria W. Ruby  
Mary Ruby & Wood Hill  
David Ryley & Rachel Shantz  
Greg Sainsbury & Marcia Taggart  
Susan Sandler  
Shelley Schmidt  
William Schmor  
David Scott  
Leonard & Paul Seppala  
Ian Sharpe  
Diana Sharpe  
Michael Sharpe & Sally Stewart  
Patrick Shaw & Leea Litzgus  
Pirkko Sheldrick  
Kim Simpson  
Robert Simpson  
Linda L. Sims  
Yat Lung Siu  
George Smith  
Randall Speller & Donald Deathe  
Dana Stewart  
Barbara & Bruce Stewart  
Dorothy Storms  
Carrie & Frank Sullivan  
Amanda & Brett Sura  
Donald Sutherland  
Nicholas A. Taylor  
Cleve & Linda Thurber  
Jeff Tomlinson  
Jessica Tong & Grace Harding  
Kuo-Bao Tong  
Keith E. Townley  
Deborah Ann Townsend  
Katie Towson & Roger Sherry  
David Trusler  
Wendy Trusler  
Gillian & Rick Uy  
Elizabeth J. Vavasour  
Paul & Gisele Wallace  
Carol Webb  
Scott Weir & Ron Reaman  
Jane E. Westlake  
Bridget Whittle  
Ken & Gail Williams  
Susan Wilson  
Jim & Marney Winn  
David & Lynn Woodward  
Elinor Woodward  
John & Judy Woodward

Beryl Wright  
Sheila Ziman  
Cathy & Charlie Zumkehr  
John Wingfelder Architect, PC  
Anonymous donors (36)

## TRIBUTE GIFTS

### In Memory

Saille Abbott  
Peter Allen  
James Bacque  
Kerry Baskey  
Amy S. Beament  
Fred Beck  
Sean C. Belshaw  
Horst Beyerle  
Taylor Binnington & Parry Lake  
John Birnbaum  
John Catto  
Koady Chaisson  
Donald Coppa  
Kathleen Davis  
William G. Davis  
Allison Dixon  
Helen Drinkwater  
John W. Duncanson  
Robert G. Eakin  
Elmer & Helen Fancher  
John A. Foulds  
Estelle Funston  
Elizabeth Jane Gillan  
Donald M. Grant  
Arthur & Dora Halpenny  
Cliff Harding  
Glen Heron  
Anne Herring  
Wendy Hoogeveen  
Laurie Hornell  
Donald R. Justason  
Peter M. Kemerer  
Marilyn King  
Wally King  
Donald Knight  
Julien LeBourdais  
Dorothy & Bill Leonard  
Roy Linden  
Donny Lockhart  
Robert C. Ludwig  
Ted McCormick  
Walter & Jessie Meinig  
Geoffrey A. Mitchinson  
Patti G. Muir  
Phyllis Murch  
Polly E. Naughton  
Douglas R. Norris  
Robert G. Parney  
Harvey & Margaret Payne  
Patricia Peacock-Evans  
Mr. & Mrs. H.E.E. (Ted) Pepler  
Gregory Pope  
Ewing Rae  
Don & Joan Redfern  
Peter Russell  
Carolyn Rymell  
Barbara Sandler  
Karl Schiefer  
Colin Shepherd  
Douglas M. Simpson  
Audrey Stratton  
Dr. Norman Burke Taylor  
Bill & Jan Trimble

Chris Vaughan  
Bram Vermeulen  
Ronald Webb  
George White

#### In Honour

Clair Balfour  
Anita Banerjee  
Swith Bell  
Kerry & Brenda Benson  
Derek Bowen  
Anne Brown  
Kathryn Brown  
Cedar Point Book Sale  
Marc Cooper  
Sondra Cornett  
Lachlan Curry  
Martha Fell  
Amy Furness  
Gabby & Gully  
Gabriella & Logan  
Hugh B. Hall & Betty (Joy) Hall  
Antony Hilliard  
Jan  
Stephen Jarvis  
Randy Johnson  
Paul Kennedy  
Rob Kennedy  
Anna Lord  
Zoë Lord  
Bill Lougheed  
Penny Martin  
Llewellyn Matthews  
Rob Reed  
Frances Reinholdt  
Gianna Rose Plante Lukas  
Nick Steffey  
Beth Stewart  
Bryn Turnbull

The Uy Family  
& The Ivester Family  
Kaitlyn Watters  
Lauryn Watters

#### LEGACY GIFTS

*Including a gift to the Georgian Bay Land Trust in your will or estate plans is a special way to leave a legacy to wilderness. Thank you to those who have planned a future gift:*

#### Wally King Legacy Circle

Dr. Ralph S. & Caroline Grose  
Dr. David R. & Susan Herbold  
Donald & Lorraine Lawson  
Peter S. Watson  
Anonymous

#### Legacy Stewardship Gifts

Peter & Cathy Cooper  
Susan Forrester & Frederick Dalley  
Ann & David Doritty  
Dr. Ralph S. & Caroline Grose  
Donald & Lorraine Lawson  
Peter S. Watson

*If you would like to leave your legacy for the Bay we all love, please contact Janet at 416.440.1519 x104 or janet.brough@gblt.org.*

#### SPONSORS

Martin Merry & Reid Limited  
Vincent Associates Inc.

#### BAYSCAPES ART AUCTION

#### Silent Auction Artists & Contributors:

Peter Adams  
AlteX droneHUB  
Beau Lake  
Tim Bilton  
Blue Mountain Resort  
Cathy Bongard  
Anthony Boright  
Karen Bowen  
Gillian Cameron  
Judy Cameron  
Kristin Clark  
D2 Fabrication  
Petra Eperjesi  
Estiatorio Milos Toronto  
Ariel Estulin  
Martha Fell  
Food Dudes  
Jake Fowell  
Bill Franks  
G & B McNabb Lumber Company Limited  
Georgian Bay Beverage Company  
Georgian Peaks  
Gilly's Snug Harbour Restaurant and Marine  
Lisa Hannaford  
Jonathan Houghton  
Libby J. Hunter  
Jaxx & Marbles  
Kaz Jones

Finn LeMesurier  
Bert Liverance  
Kylie MacEachern  
Kara McIntosh  
Alexandra McLaughlin  
Sarah R. Merry  
Peter B. Mills  
Finn O'Hara  
Osler Bluff Ski Club  
Adele Partington  
Andrew Peycha  
Rundi Phelan  
Kayla Potter  
Aaron Rusak  
George Rutherford  
Peter Sainsbury  
Carl & Jennifer Spiess  
Sustainable Cottages  
The Charles W. Stockey Centre for the Performing Arts  
The Ojibway Club  
The Topper Group Limited  
Jeff Tomlinson  
Jennifer Trueman  
Johanna Van Kempen  
Jessica Vergeer  
Vettä Nordic Spa  
Vortex Canada  
Bryan Wall  
Katie Ward  
Jenn Wilkins  
Wendy A. Wingfelder  
Andrew Young  
Zuccarini Importing  
Anonymous donor

*In preparing this report, we have tried our best to be as accurate as possible. If there is an omission or a spelling error, please accept our sincerest apologies and contact us at 416.440.1519 x107 or info@gblt.org so that we can update our records.*

## OUR TEAM

#### STAFF

**Andrew Young**  
Executive Director

**Aaron Rusak**  
Conservation Director

**Janet Brough**  
Senior Development Officer

**Sarah Koetsier**  
Communications Director

**Stefani Matis**  
Conservation and Protected Areas Coordinator

**Adam Grotto**  
Corridor Project Coordinator

**Jenn LeMesurier**  
Land Securement Coordinator

**Dania Matta Chidiac**  
Manager of Finance and Operations

**Suzanne Legault**  
Office Administrator & Executive Assistant

**Karen Koornneef**  
Corridor Project Ecologist

**Joseph Kohut**  
Corridor Project Ecologist

**Rhythm Verma**  
GIS Technician

**Irina Denissova**  
Bookkeeper

#### DIRECTORS

**Cathy Bongard**  
Board Chair

**Ross Carter**  
Treasurer

**Jesse Wright**  
Secretary

**David Bunston**  
Land Protection Chair

#### ADVISORS

Andy Alexander  
Christopher Baines  
James Beatty  
Shannon Beddoe  
Graeme Burt  
Nancy Christie  
Jim Cooper  
Peter Cooper  
Fred Dalley  
Neil Davis  
David Doritty  
Michael Drinkwater  
Nick Eyles  
Andy Fabens

**Cathy McKeever**  
Stewardship Chair

**Adam de Pencier**  
Communications Chair

**Anthony Boright**  
Fundraising Chair

**David Browne**  
Investment Chair

**Trish Barrett**

**Ian Davis**

**Lindsay Potts**

**Nick Steffey**

**Janny Vincent**

Sandy McLaren  
Paul McLean  
Evelyn Newell  
Michael Owen  
Dana Porter  
Georgia Rennick  
Jan Ruby  
Tom Scoon  
Carl Spiess  
Richard Stark  
John Stark  
Cindy Tripp  
Barbara Zimmerman



### OUR MISSION

The Georgian Bay Land Trust acts to protect wilderness lands and species along the eastern shore of Georgian Bay and the North Channel and its near watershed, through strategic conservation planning, land securement, stewardship, research, and education.

### OUR VISION

An eastern Georgian Bay and North Channel whose islands, shores, and inland watersheds are connected and strengthened by a network of protected natural lands and habitats, where native species thrive and people interact with the natural world.

### OUR VALUES

Love and respect for our special place; Integrity and commitment to our work; Inspiring others to preserve this natural wonder.

Georgian Bay Trust Foundation, Inc. operating as Georgian Bay Land Trust  
192 Spadina Ave. Suite 207 | Toronto ON | M5T 2C2  
416.440.1519 | [www.gbtl.org](http://www.gbtl.org)

