

The finishing touch for
commercial and residential areas.

Specialist Surfacing



Safely Marking
The Way Ahead
jointline.co.uk

RIVER COLNE TOWPATH - TAR & CHIP



Every client and project is unique.

We work with each client to tailor the broad range of specialist surfacing and utility reinstatement services that we offer to deliver the best solution for the programme of works.

Jointline surface dressing division undertake a wide range of specialist surfacing contractor based projects nationally for local authorities, housing developers and heritage sites for both commercial and residential clients.

In our 30-year history, we have built up a broad and deep knowledge base and are renowned for our expertise and market-leading project delivery. This is why we are trusted by public sector organisations, the biggest names in commercial construction and private clients across the UK.

Our high quality standards and expertise within disciplines such as resin bound, resin bonded, tar spray and chip surface treatments, utility reinstatement and modular granite paving ensures that Jointline stay at the forefront of the decorative surfacing industry.

Jointline are approved contractors for Addagrip and Leeson Polyurethanes resin systems that been certified by The British Board of Agrément (BBA), the UK's major authority recognised by building control, government departments, architects, local authorities, specifiers, and industry insurers. The durability and performance of BBA approved resin bound/bonded surfacing systems depends on site conditions and the project type, but generally the surfacing 'will have a service life in excess of conventional asphalt surfacing'.

Resin Bound

Jointline are the market leaders in the application of resin bound surfacing.

Resin Bound provides a perfect surfacing solution which is strong, aesthetically pleasing and adds style for projects on roads, driveways and footpaths

The resin bound surface provides a smooth, contemporary, hard wearing and low maintenance, surface using a range of natural and recycled aggregates.

The finished surface is porous and SuDS compliant when used with the appropriate sub-base build up.

The finished surface is a seamless bound paving system which is flexible and porous and perfect for both domestic and commercial use. Jointline install materials from the leading industry suppliers which are BBA certified.

Benefits of resin bound surfacing:

- Anti-Slip
- Porous and SUD's Compliant
- Durable
- Wheelchair Friendly - DDA Compliant
- Low Maintenance
- UV Stable
- Application systems - to asphalt, concrete and unbound surfaces

Ideal for:

- Driveways
- Paths
- Swimming Pool Surrounds
- Private Estates
- Theme Parks
- Tourist Attractions
- Retail Parks
- Public Realm
- Care Homes
- Residential Developments
- Schools, Colleges & Universities
- Health Care Settings

THE MILL ADVENTURE BASE





CARSINGTON WATER

Resin Bonded

Jointline has the extensive knowledge to deliver the best solution for your needs.

Resin Bonded Surfacing System provides an attractive, hard wearing and low maintenance surface by bonding or fixing loose gravel aggregates to concrete, asphalt, wood or metal.

Aggregates bonded in this way give the appearance of loose gravel without the many maintenance problems. Because the aggregates are scattered on to a complete layer of resin, water cannot pass through; this means a resin bonded system is not porous. A resin bonded system is therefore not a SUDS compliant solution.

A wide range of natural and recycled aggregates are available, making it ideal for heritage sites, landscaping schemes, parks, paths, driveways, roads and visitor attractions. The textured properties and great anti-skid resistance of resin bonded surfacing makes it ideal for areas such as gradients, ramps and slopes.

Jointline install materials from the leading industry suppliers which are BBA certified.

Benefits of resin bound surfacing:

- Aesthetically pleasing – decorative natural appearance.
- Durable – hard wearing and resilient.
- Low maintenance - occasional sweeping or pressure washing.
- Fixed - does not move, migrate, or wash away.
- Anti-slip – textured aggregates provide a good anti skid surface.
- Application - to asphalt, bridge decks, concrete, timber and steel surfaces.

Ideal for:

- Driveways
- Paths
- Gradients, slopes and ramps
- Private Estates
- Theme Parks
- Tourist Attractions
- Retail Parks
- Public Realm
- Care Homes
- Residential Developments
- Schools, Colleges & Universities
- Health Care Settings

Tar Spray & Chip

Jointline has the experience to deliver a first class service whilst minimising disruption.

A durable surface dressing binder, tar and chip surfacing is a low-cost alternative to asphalt and is ideal for producing a high quality, natural and aesthetically pleasing finish to drives and footpaths for commercial and large residential projects. Jointline install either a hot applied or a cold applied surface dressing binder that is suitable to the clients requirements and dressed with a range of decorative coloured aggregates.

Tar spray & chip is a system where the bitumen emulsion is spread across the base, and the aggregate is scattered into it. Most of the aggregate will adhere to the emulsion, while some will remain loose. This gives the appearance of loose gravel.

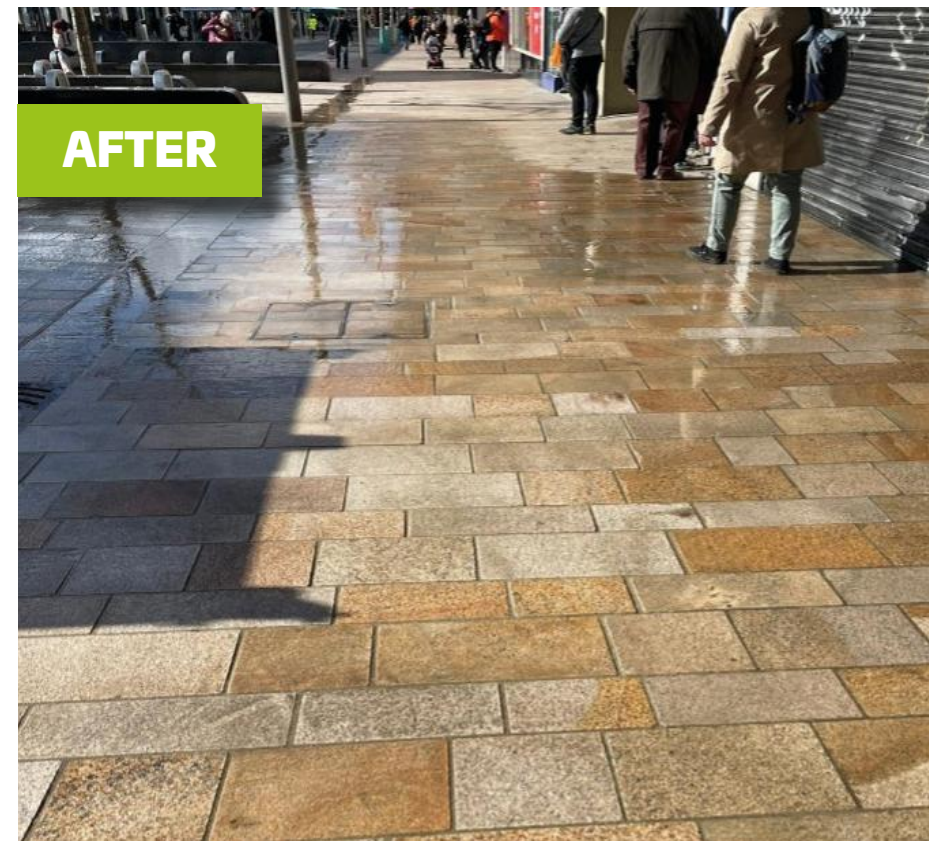
Benefits of tar spray & chip surfacing:

- Aesthetically pleasing – decorative natural appearance.
- Cost effective
- Extends the life of the old substrate
- Better skid resistance
- Seal the surface to prevent the ingress of water into the structural layers
- Anti-slip – textured aggregates provide a good anti skid surface.
- Application - to asphalt, concrete

Ideal for:

- Canal Towpaths
- Commercial & Residential Driveways
- Woodland Walkways
- Footpaths
- Decorative Areas
- Cycle Lanes
- Playgrounds
- Hard Standings
- Access Ramps
- Driveways
- Private Estates





Utility Reinstatement

Jointline operate nationally, by undertaking surfacing reinstatement works for utility contractors.

Utility Reinstatement contracts require our skilled workforce to source and install the correct materials to match the existing surfaces to carriageway, footway or domestic applications. Predominantly in city or centre public realm areas the work includes excavating the temporary surface and then reinstate the specified products to match the existing surface.

Jointline work closely with the end client and local authorities to ensure that all relevant permits are in place prior to works commencing. Consideration for stakeholders and local residents is taken to prevent unnecessary disruption.

Due to the many constraints required, when working close to utility assets, specialist tools and bespoke teams are trained and used. Our competent and experienced site teams reinstate the required surfacing to the client's specification, reassuring them that Jointline are fully aware and capable of meeting their high site standards.

Benefits of using Jointline Surfacing Utility reinstatements

- Jointline have experience in sourcing specified materials or providing the closest equivalent material
- Cost effective
- Trained workforce
- Minimal disruption

Ideal for:

- City centre or public realm areas
- Commercial & Residential Driveways
- Footpaths
- Decorative Areas
- Cycle Lanes
- Playgrounds
- Driveways
- Private Estates

Pattern Imprint

Jointline are the market leaders in the application of hot and cold applied pattern imprinted concrete.

Pattern imprinted concrete is a decorative application used to create a coloured, textured surface.

Concrete is laid and levelled using traditional methods. A pattern is then printed onto the surface using specially designed contoured printing mats. The most popular used patterns resemble cobbles, stone, brick and blocks, some patterns are even made to resemble wooden planks.

Once the concrete has dried it can be sealed with matt or gloss sealers. This results in a long lasting, durable and textured surface that can be used for a variety of purposes, including driveways, paths, flooring and decorative elements to construction projects.

Our highly skilled teams can also source patterns and colours to match existing surfaces for utility reinstatement and are experienced in both hot and cold applied techniques.

Ideal for:

- Traffic calming schemes
- Speed tables
- Village gateway treatments
- Pedestrian areas
- Roundabouts
- Demarcation areas
- Urban regeneration areas
- Heritage areas

Benefits of pattern imprint:

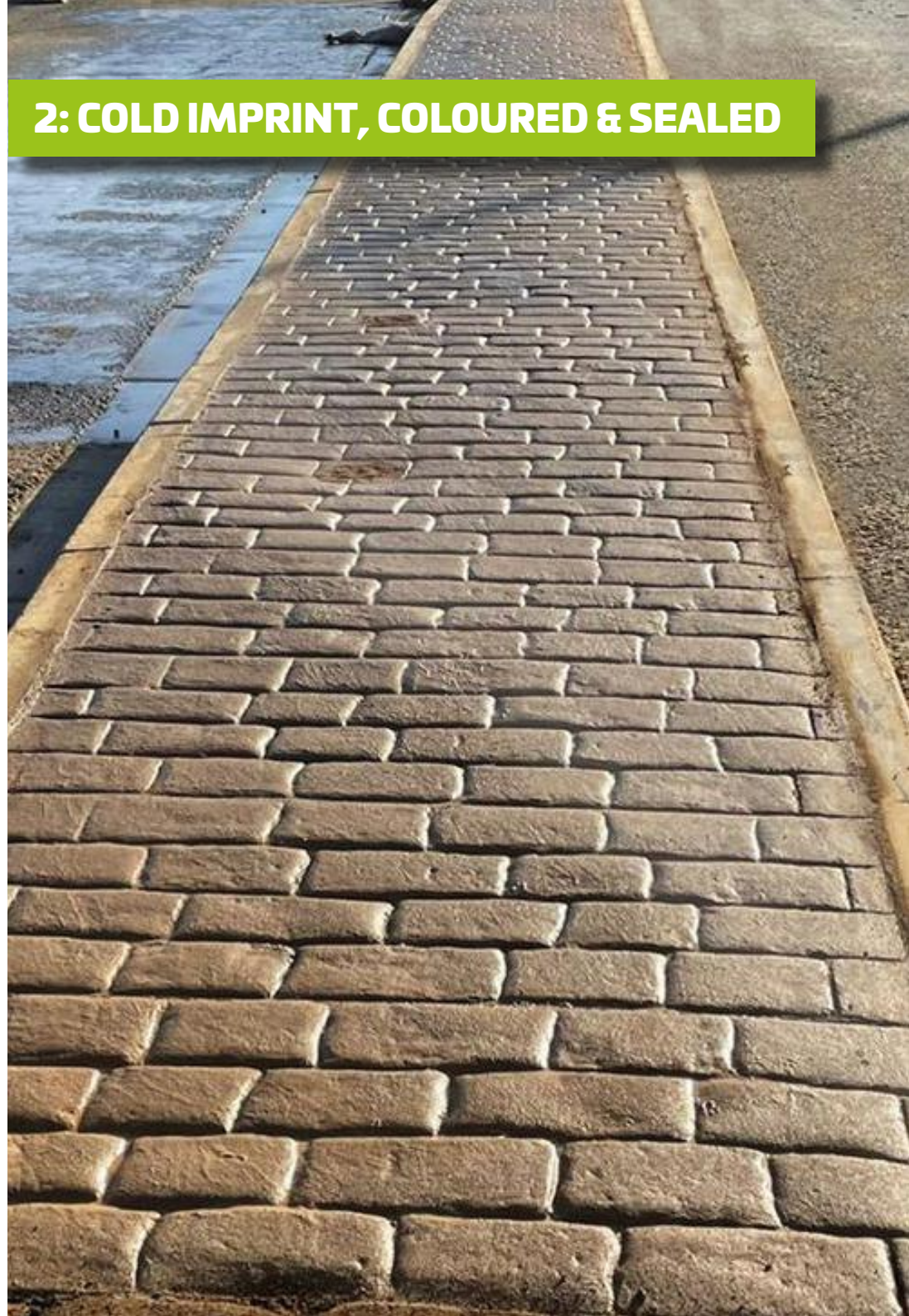
- Quick to install
- Long term cost effective
- Zero maintenance
- Highly durable and hard wearing
- Full colour
- Aesthetically pleasing
- Heritage areas



1: FRESH CONCRETE



2: COLD IMPRINT, COLOURED & SEALED



EXPERIENCED

INNOVATIVE

COLLABORATIVE

RESPONSIBLE

RELIABLE

SAFE

Mission Statement:

"We are committed to building long lasting, successful relationships with our stakeholders. Our mission is to become both an employer of choice and a supplier of choice, operating with integrity and putting people at the core of our business.

For us, it's personal."

Values:

We are **Experienced**

We are a trusted, well-established business built around highly skilled and talented people who excel at what they do. Our success is built on high levels of competency with strength and depth across every delivery stream resulting in a successful track record.

We're built on solid foundations.

We are **Innovative**

We foster agile ways of thinking to bring new ideas to life which shape the future of our industry. We provide customer focussed solutions that are unique to each scheme.

Our people learn, evolve and improve.

We are **Collaborative**

We improve customer experience by promoting an open working environment where knowledge and ideas are shared freely to create improved outcomes for all. We listen and learn together.

Teamwork makes us stronger.

We are **Responsible**

We care for our planet and seek to bring positive benefits to the communities that we serve. We value diversity, celebrate difference and offer an inclusive working environment. We invest heavily in formal training and apprenticeships.

We are ethical, honest and trustworthy.

We are **Reliable**

We do what we say we are going to do. We work hard to deliver schemes that are right first time and defect free.

You can depend on us to deliver.

We are **Safe**

We promote a safety led culture where people are empowered to check, challenge and change.

Safety starts with us!



Safely Marking
The Way Ahead
jointline.co.uk

Lincoln HQ

Airfield View, Camp Road
Witham St Hughs
Lincoln
LN6 9TW
Tel: 01522 868 636
Email: info@jointline.co.uk

Bradford Depot

Spartan Road
Low Moor
Bradford
BD12 0RY
Tel: 01274 736 504
Email: info@jointline.co.uk